

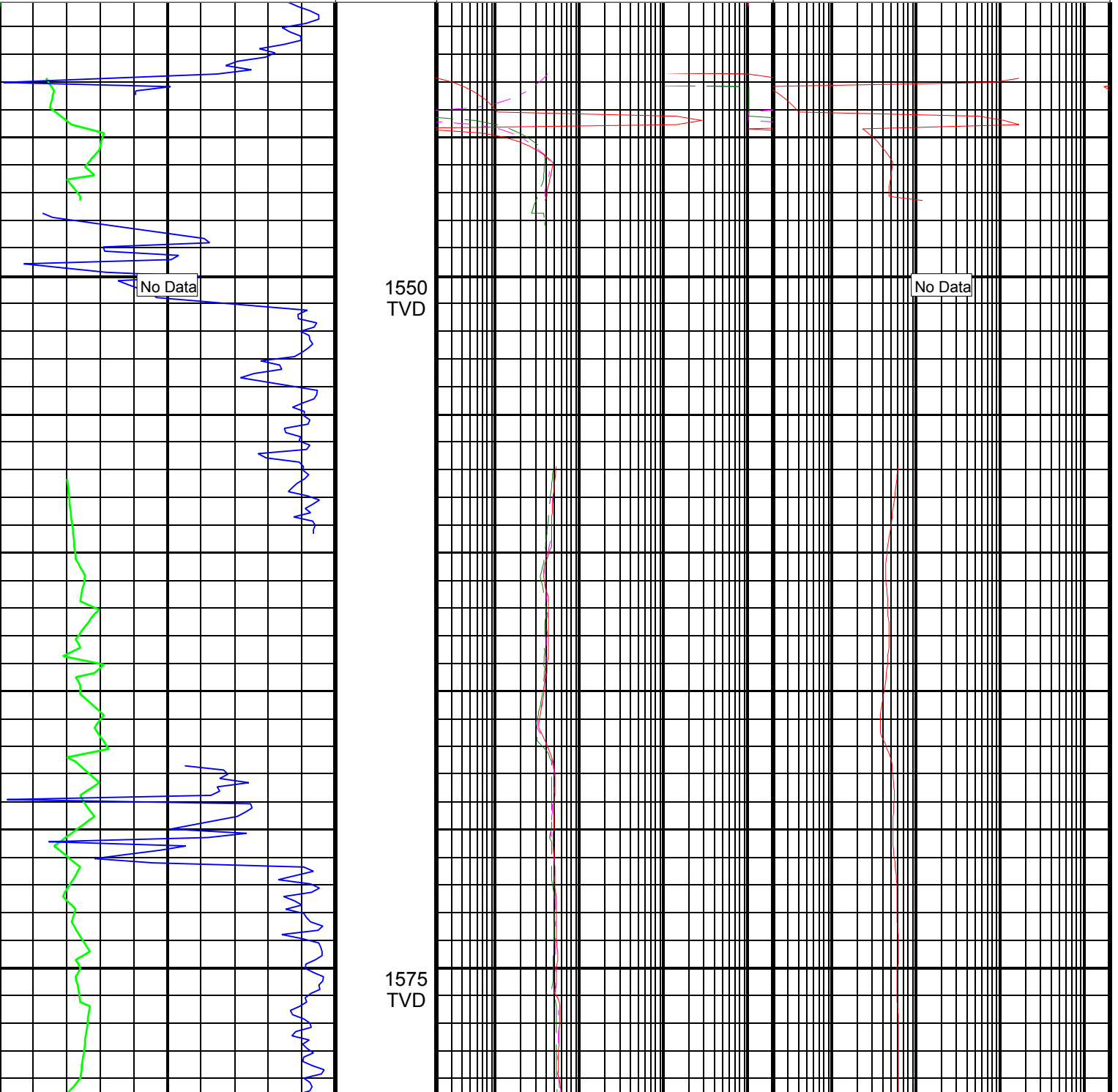
Madfish-1 Run4 VISION Resistivity RT 200TVD

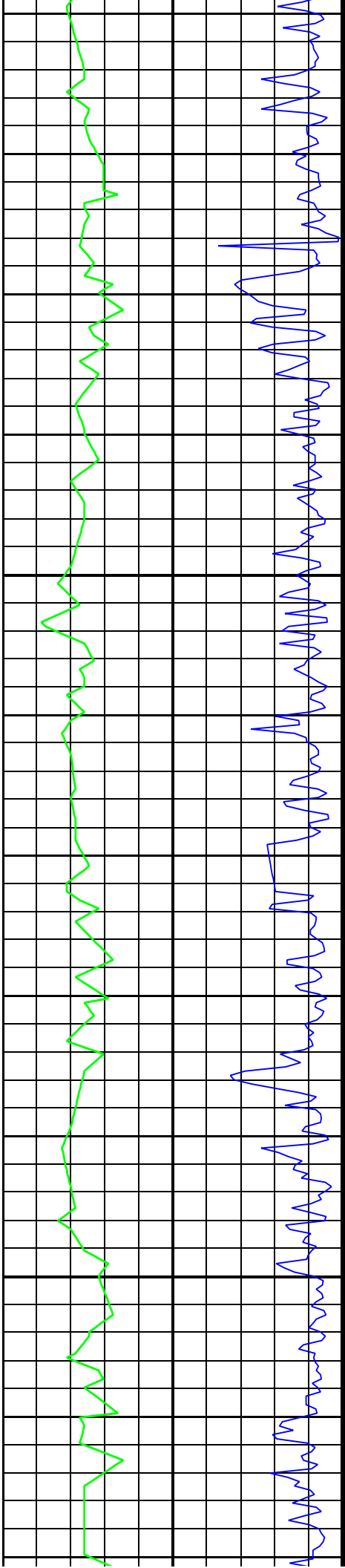
ARC9A-AA id13_0c_02
 SWD9-AA id13_0c_02
 ADN id13_0c_02

MWD_10 id13_0c_02
 RAB id13_0c_02

Format: VISION Resistivity Vertical Scale: 1:200 Graphics File Created: 04-Dec-2008 07:36

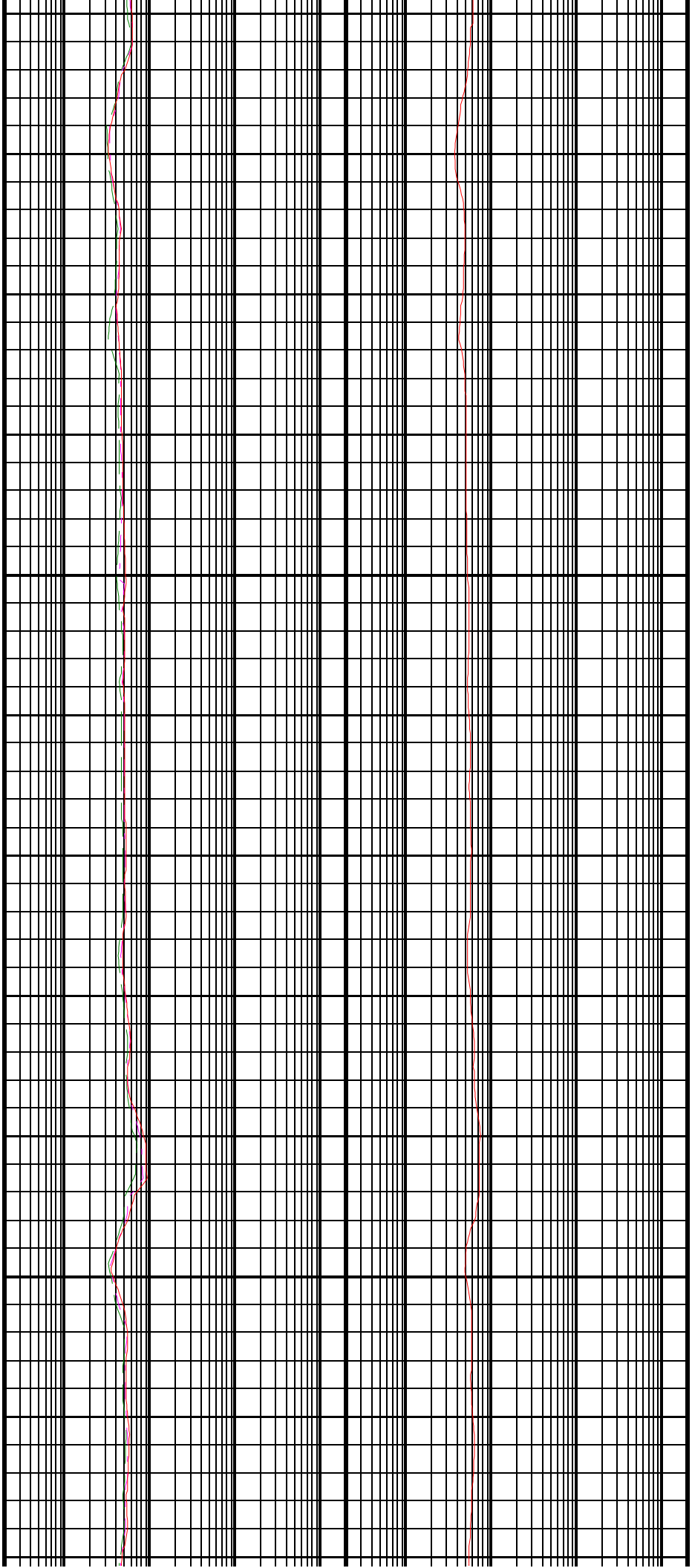
	ARC BHCorr Phase-Shift Resistivity 40-in. at 2 MHz, Real-Time (P40H_RT) 0.2 (OHMM) 2000	
ARC Gamma Ray, Real-Time (ARC_GR_RT) 0 (GAPI) 200	ARC BHCorr Phase-Shift Resistivity 28-in. at 2 MHz, Real-Time (P28H_RT) 0.2 (OHMM) 2000	
ROP (ROP) 1000 (M/HR) 0	ARC BHCorr Phase-Shift Resistivity 16-in. at 2 MHz, Real-Time (P16H_RT) 0.2 (OHMM) 2000	ARC BHCorr Attenuation Resistivity 40-in. at 2 MHz, Real-Time (A40H_RT) 0.2 (OHMM) 2000

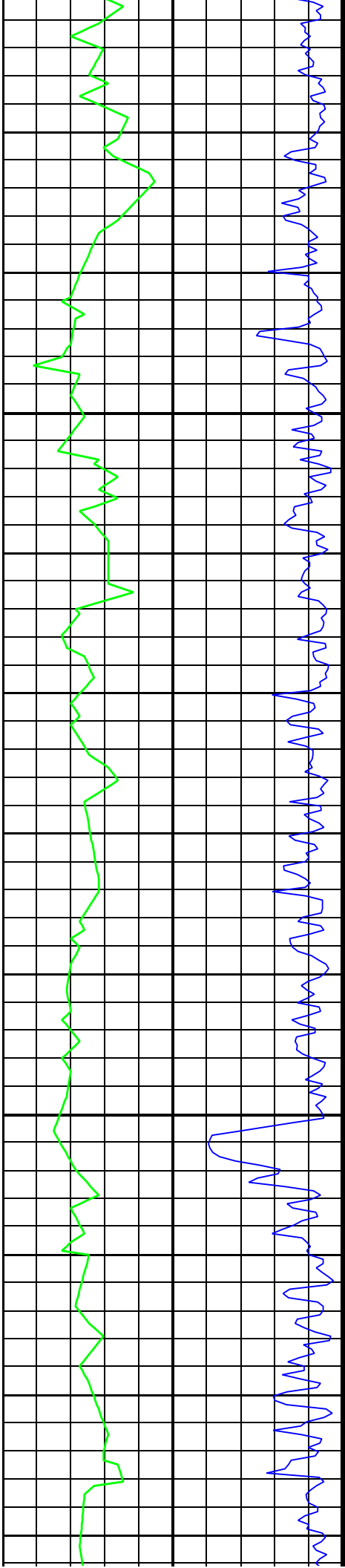




1600
TVD

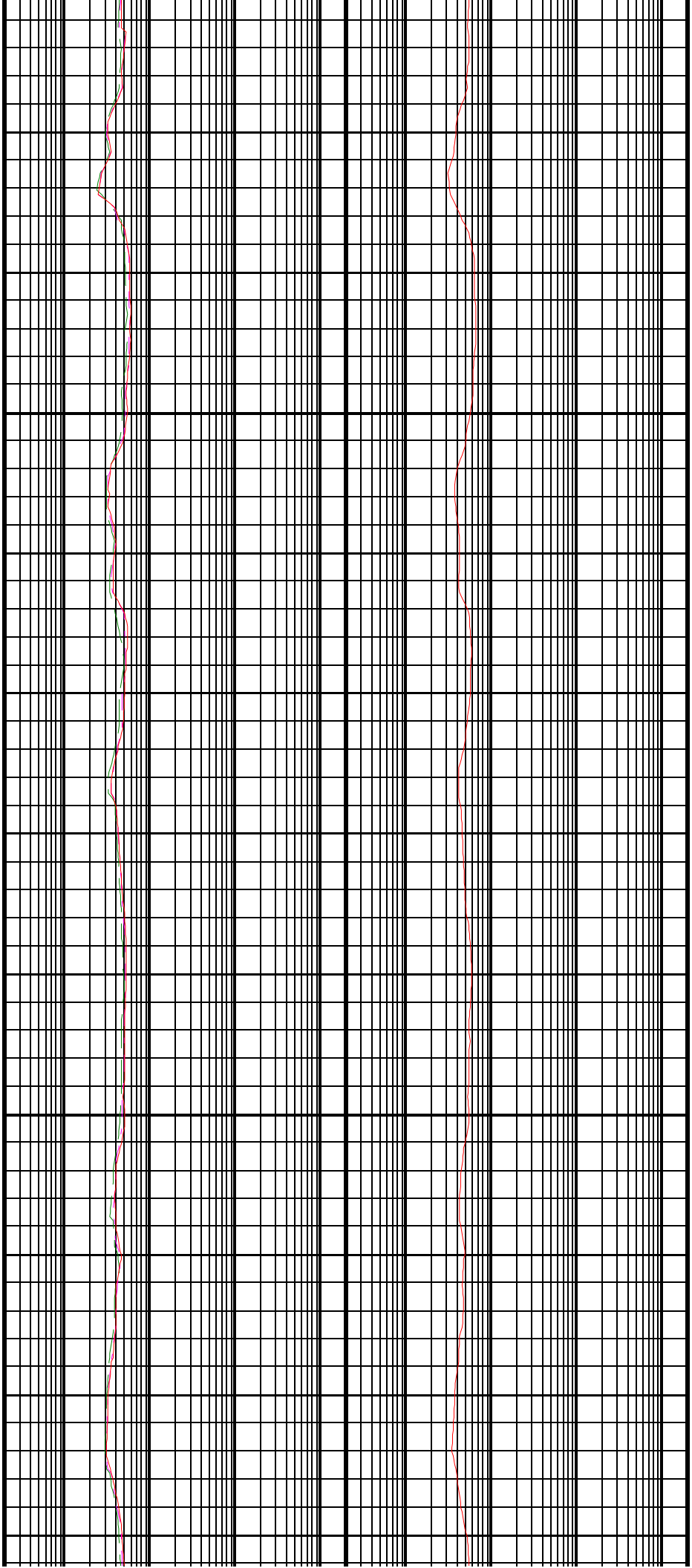
1625
TVD

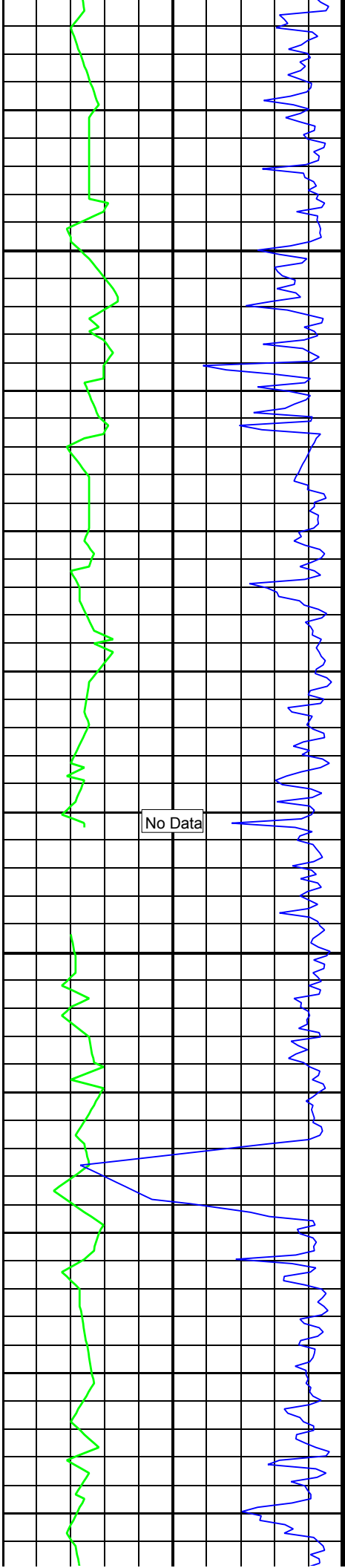




1650
TVD

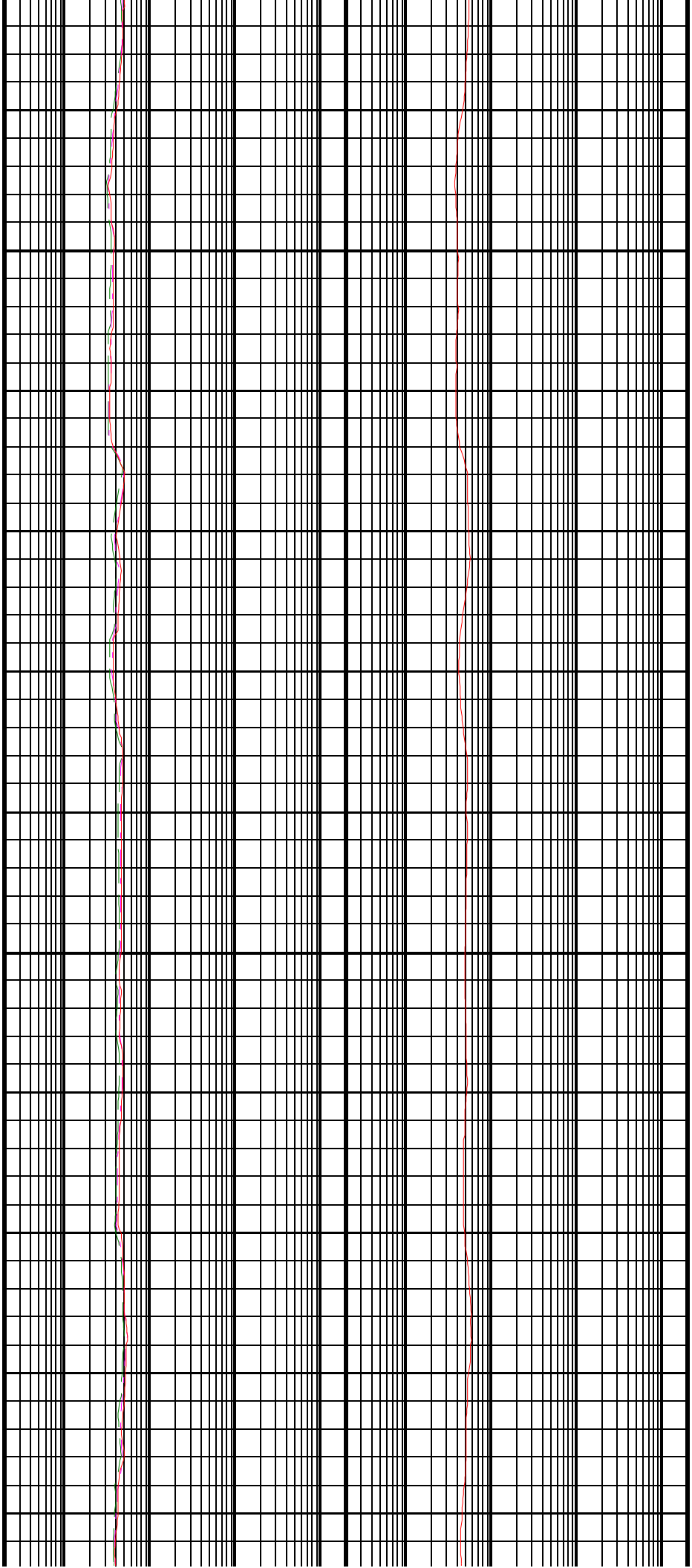
1675
TVD

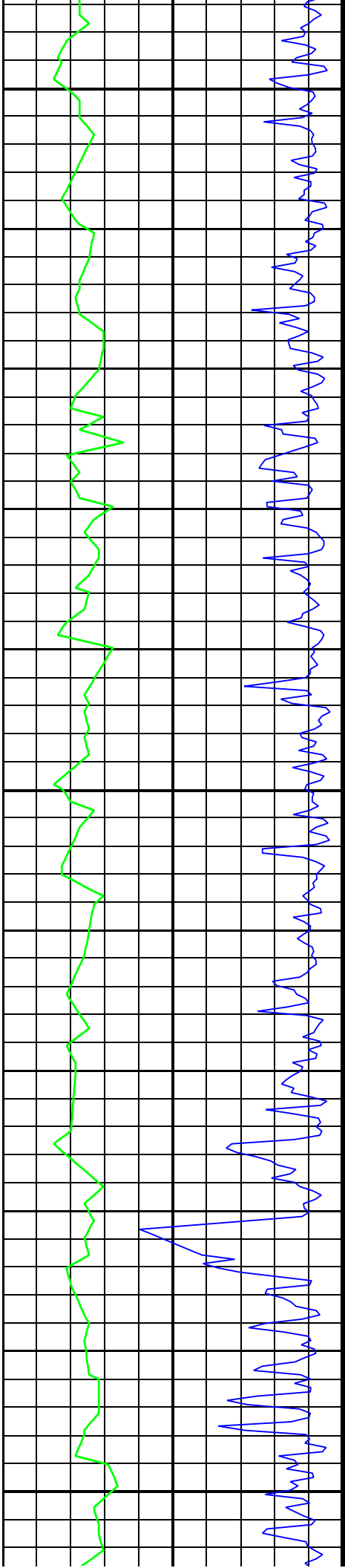




1700
TVD

1725
TVD

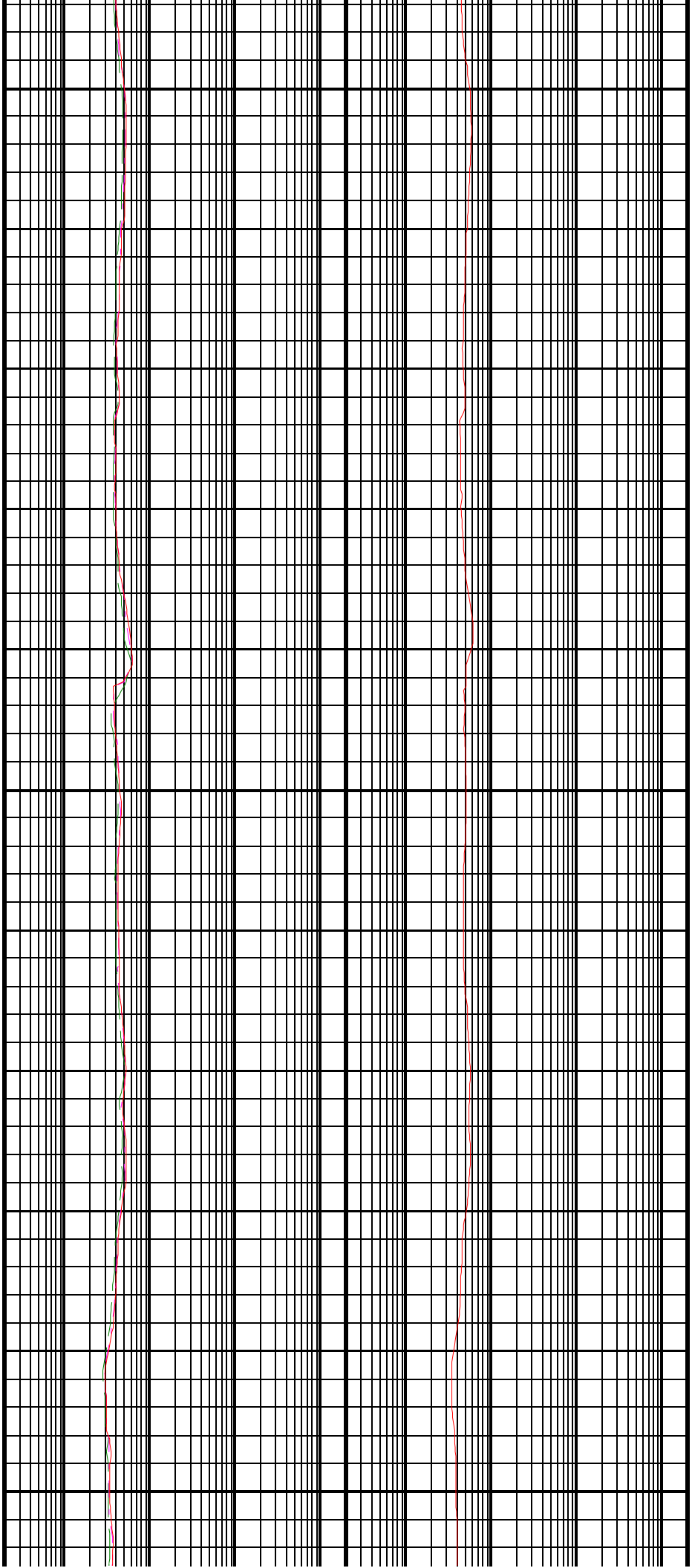


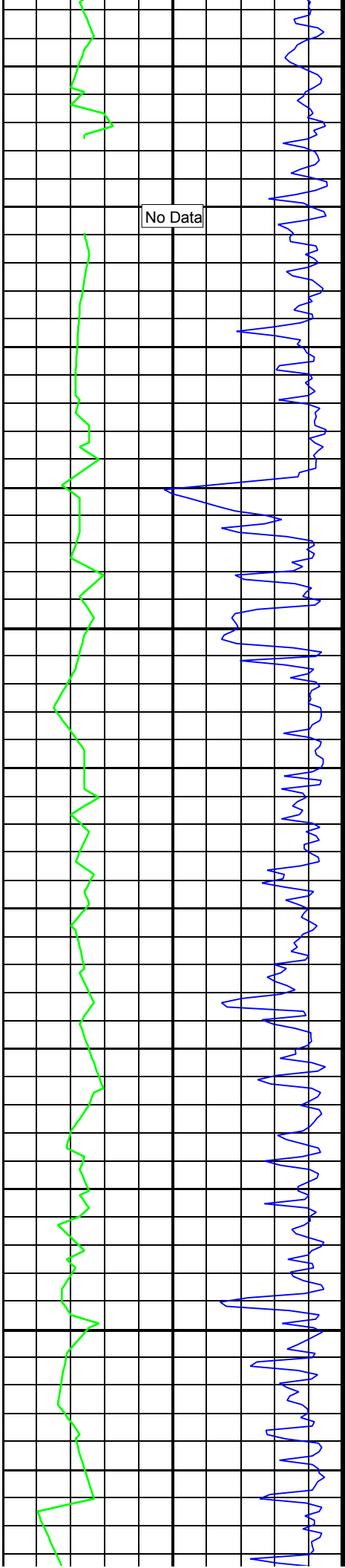


1750
TVD

1775
TVD

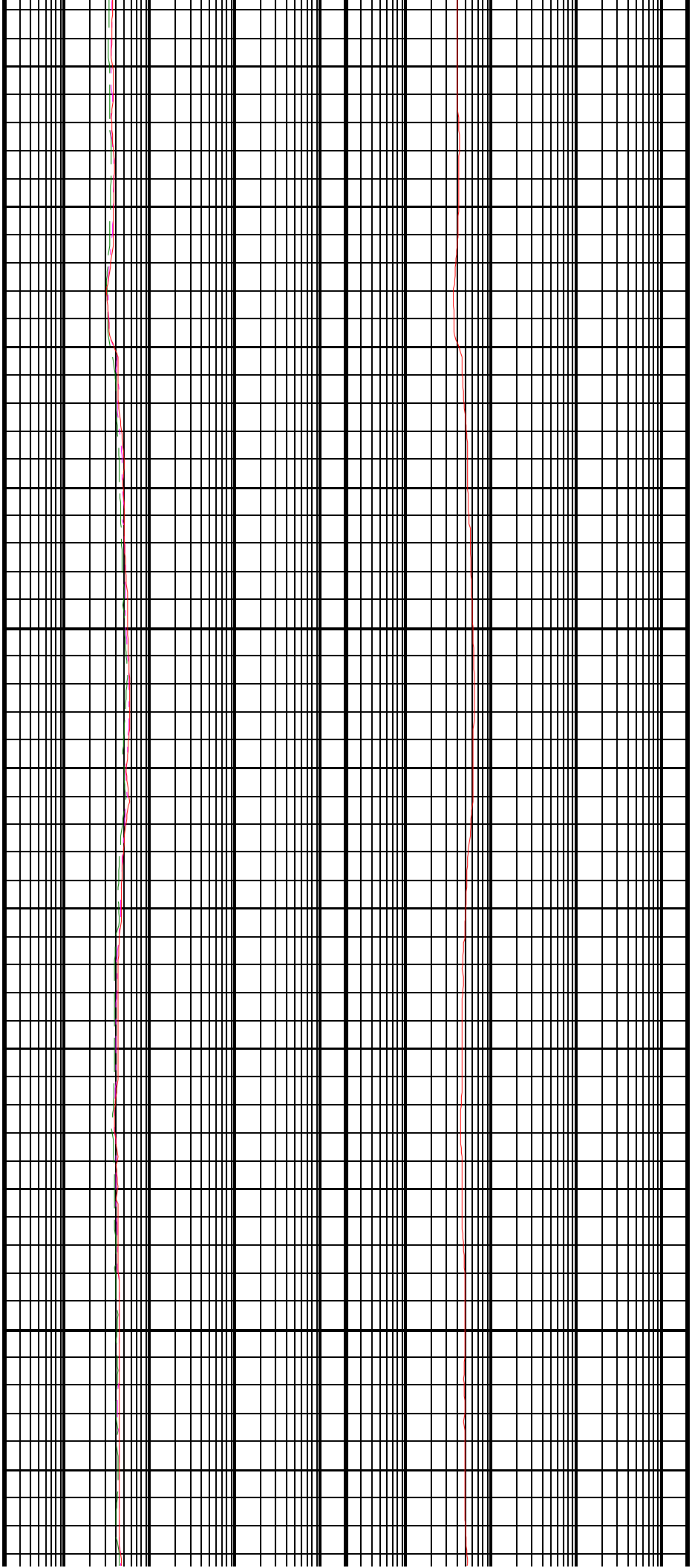
1800
TVD

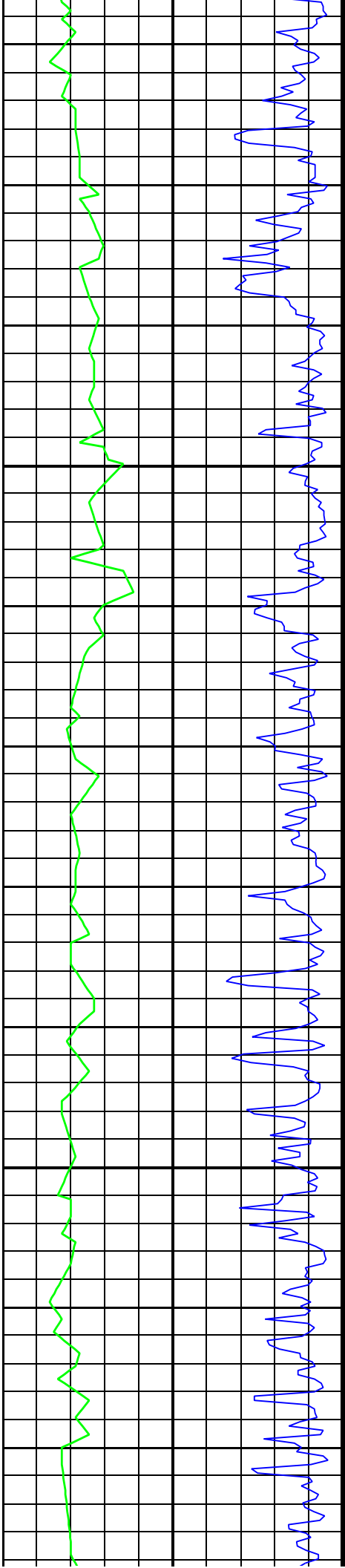




1825
TVD

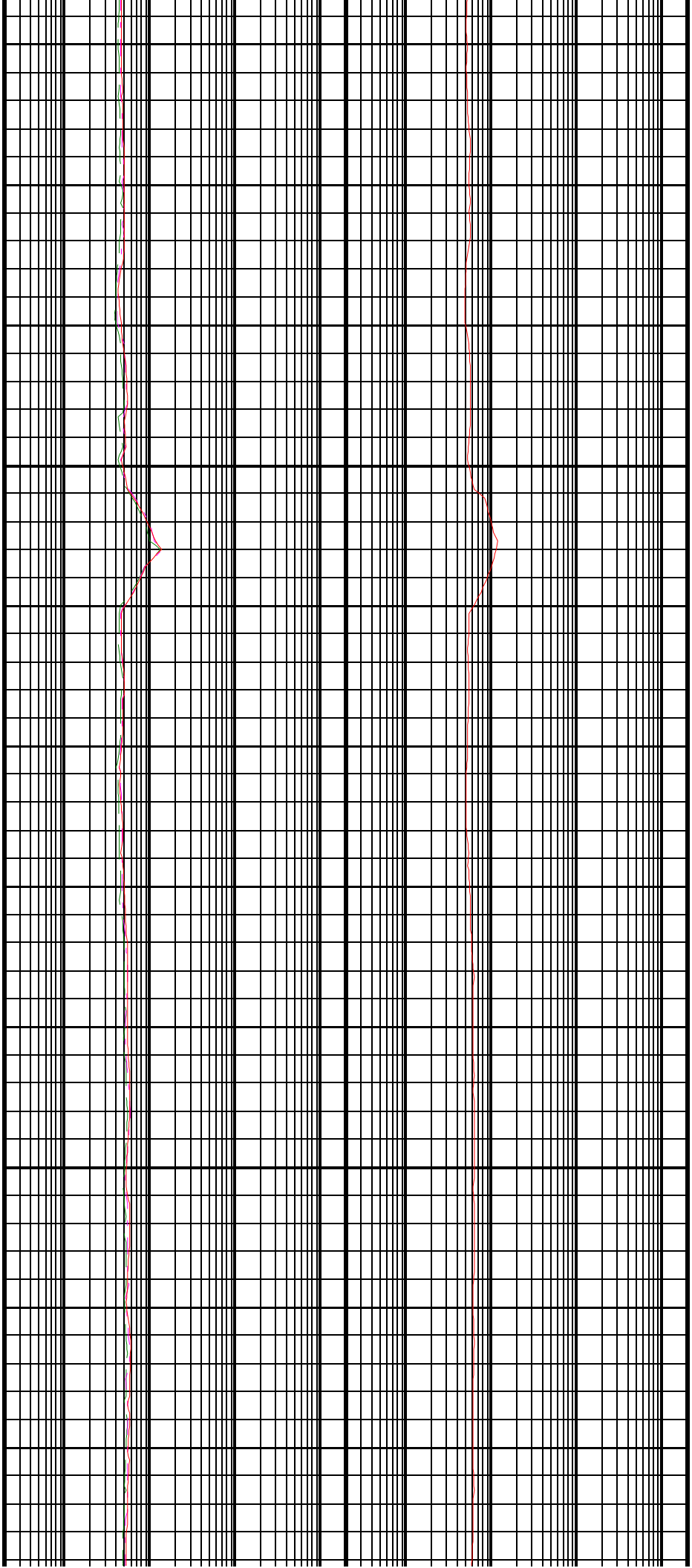
1850
TVD

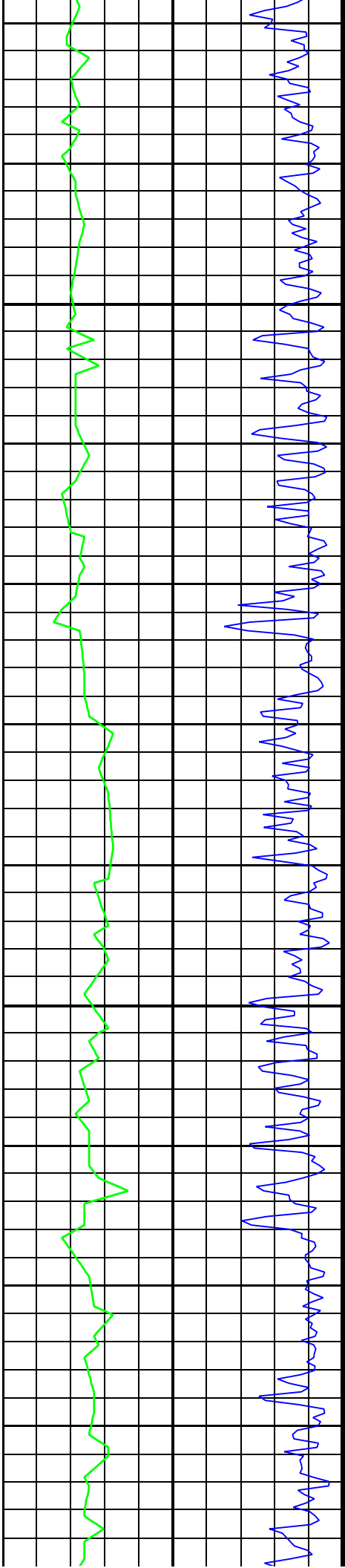




1875
TVD

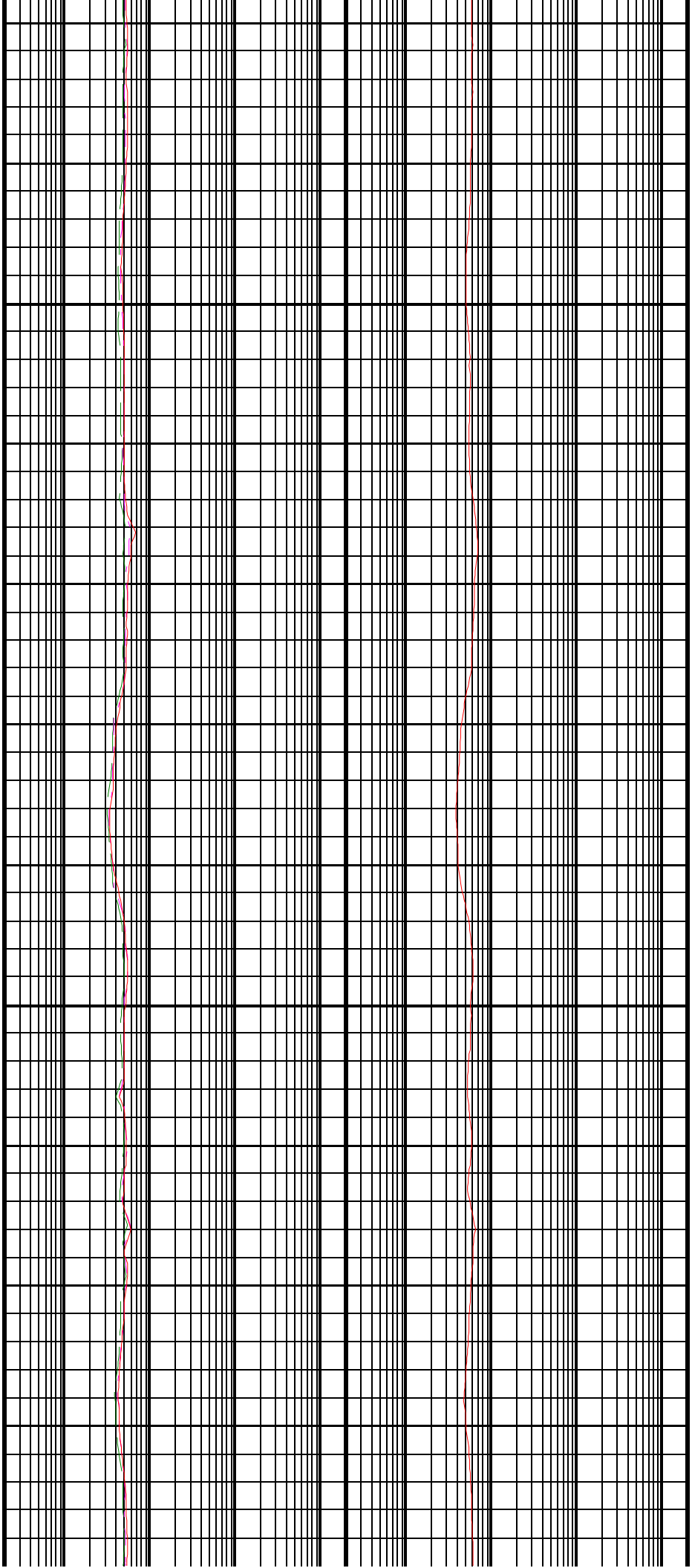
1900
TVD

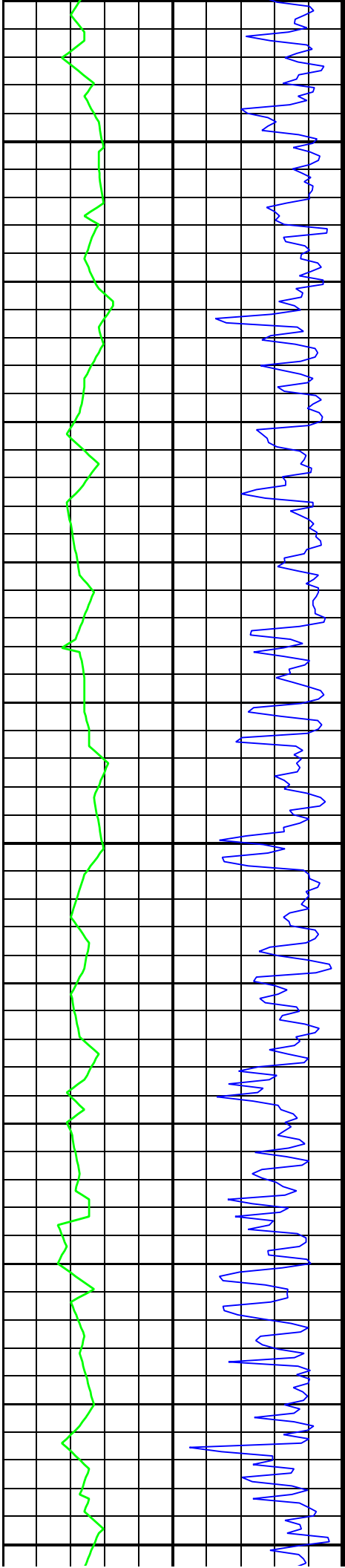




1925
TVD

1950
TVD

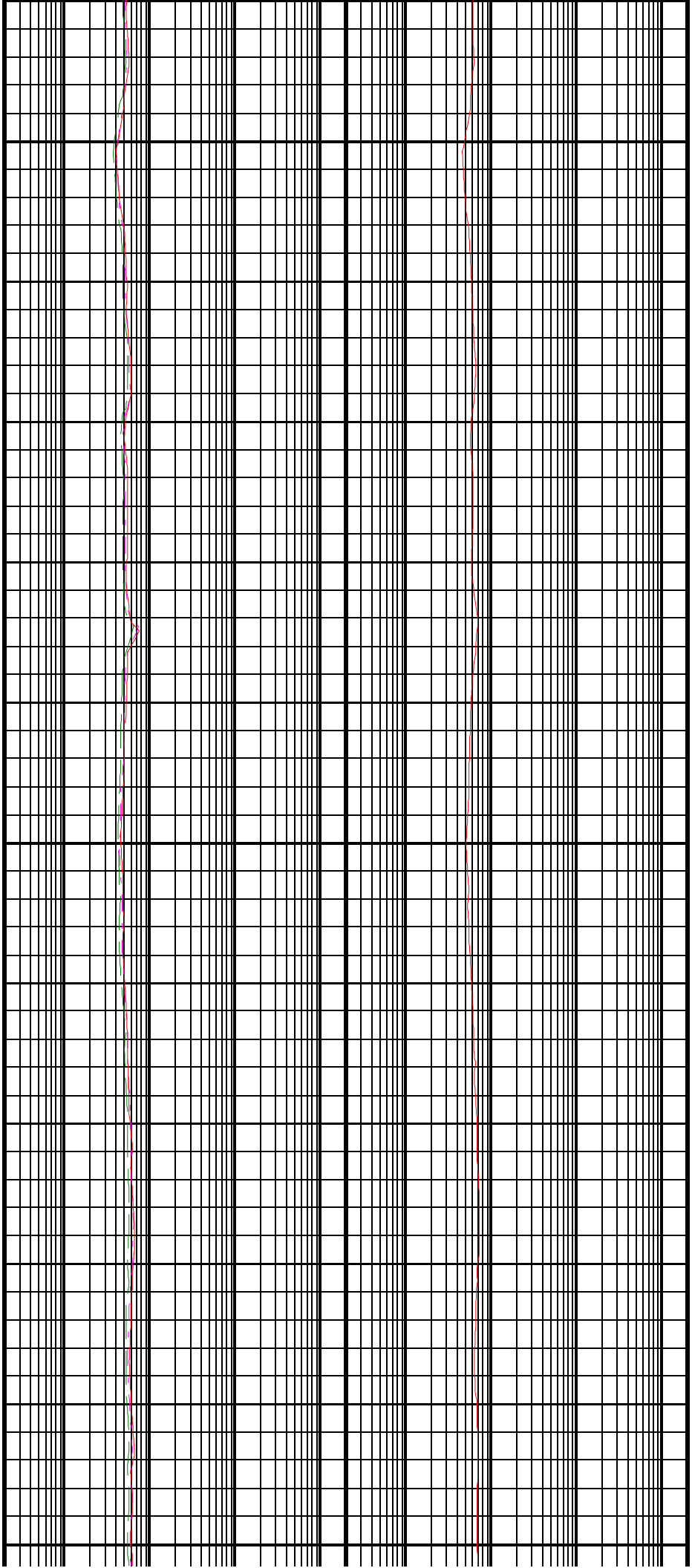


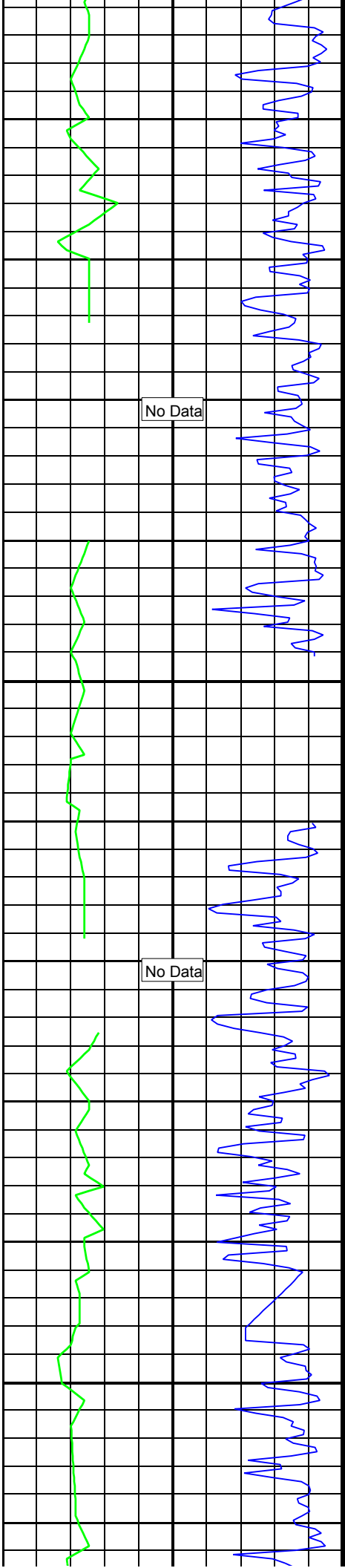


1975
TVD

2000
TVD

2025

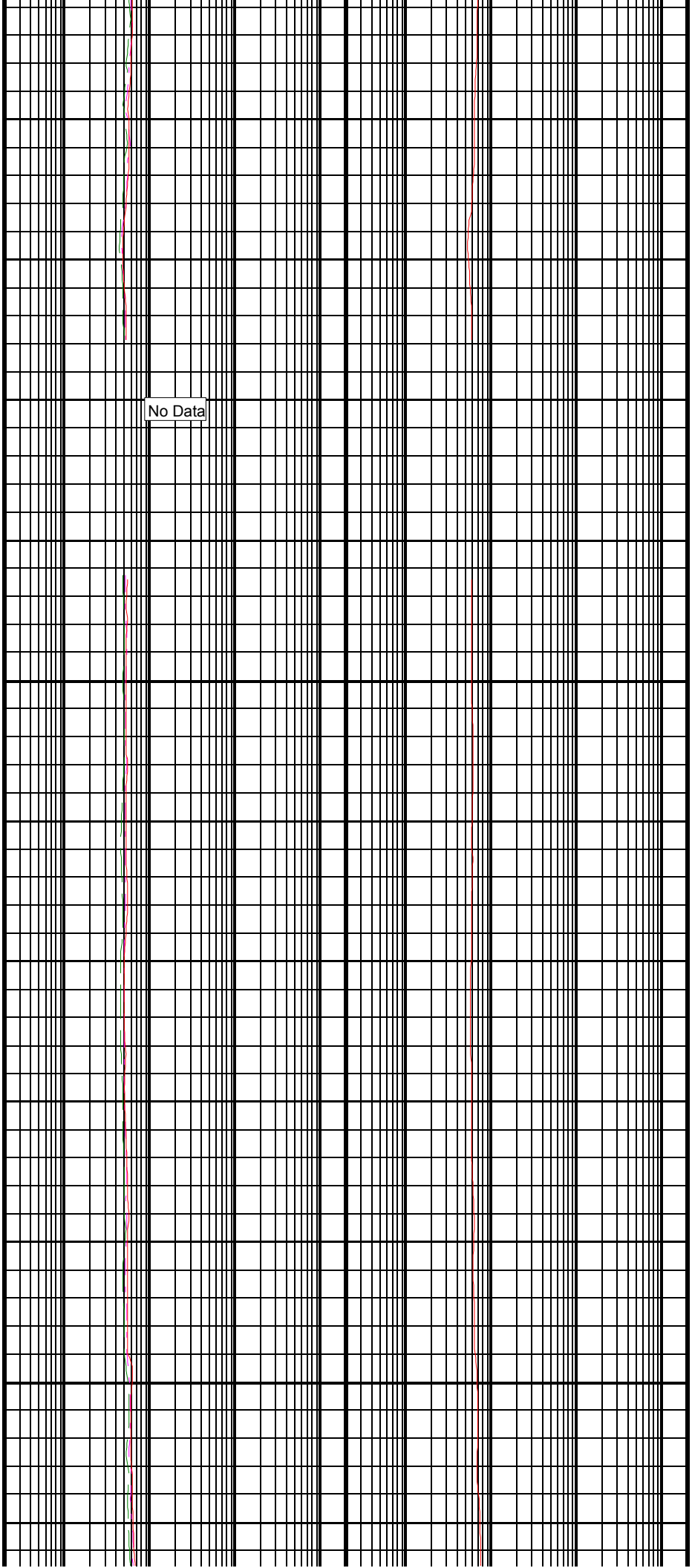




TVD

2050
TVD

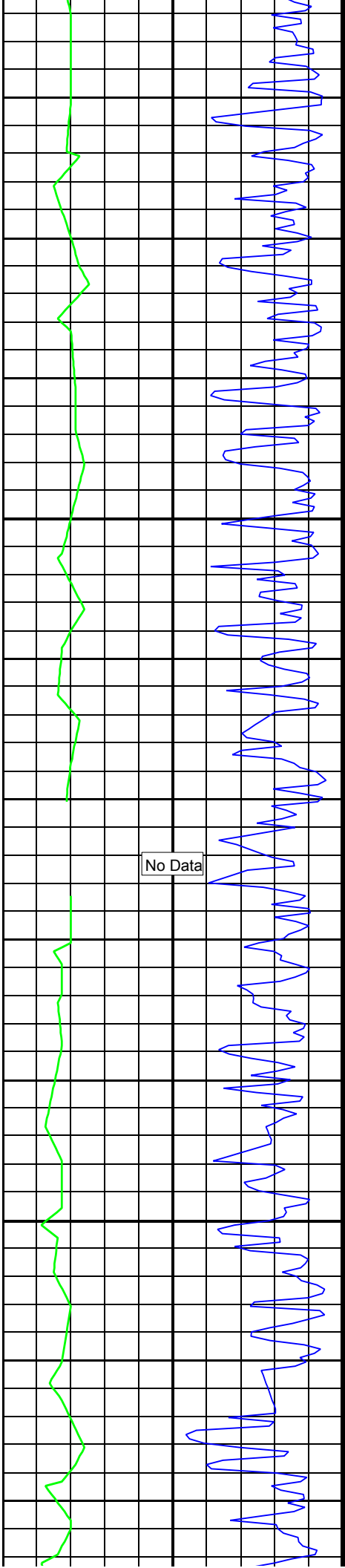
2075
TVD



No Data

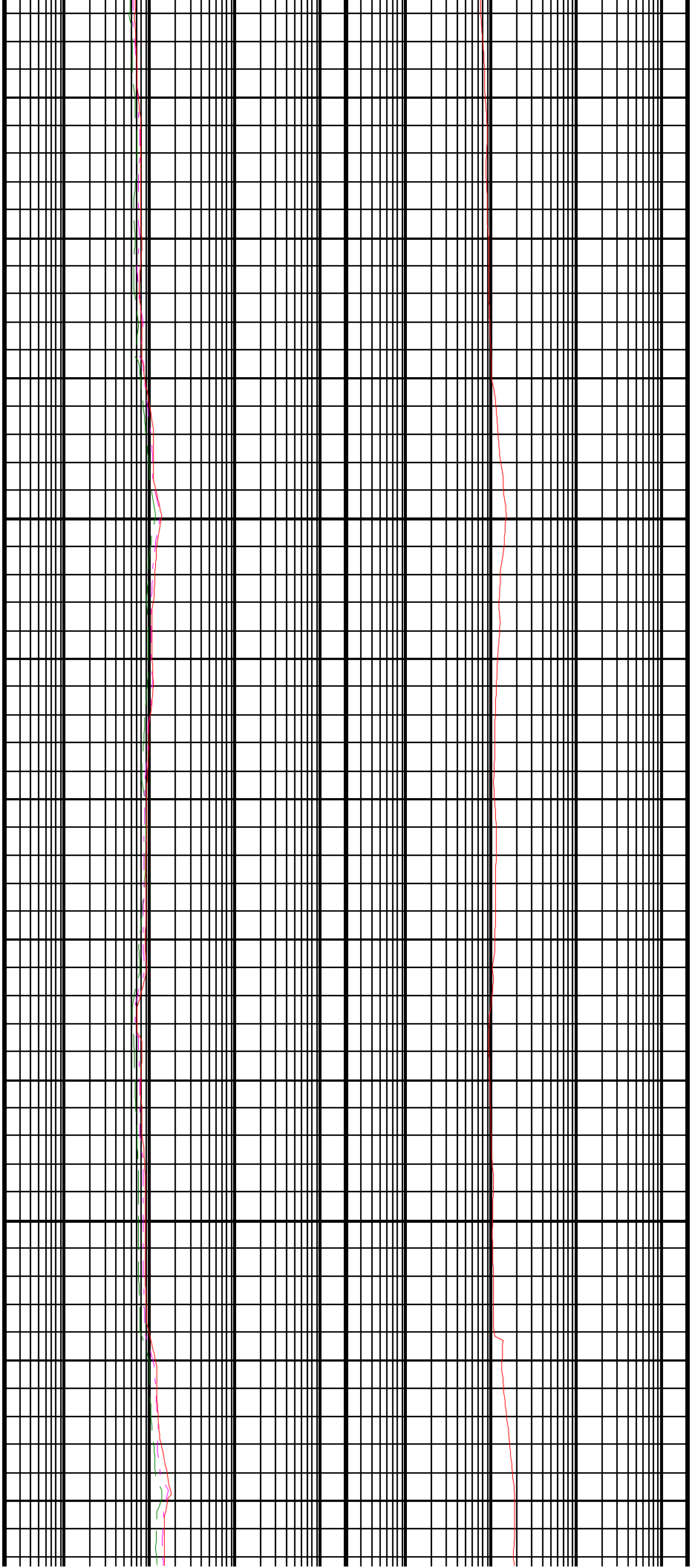
No Data

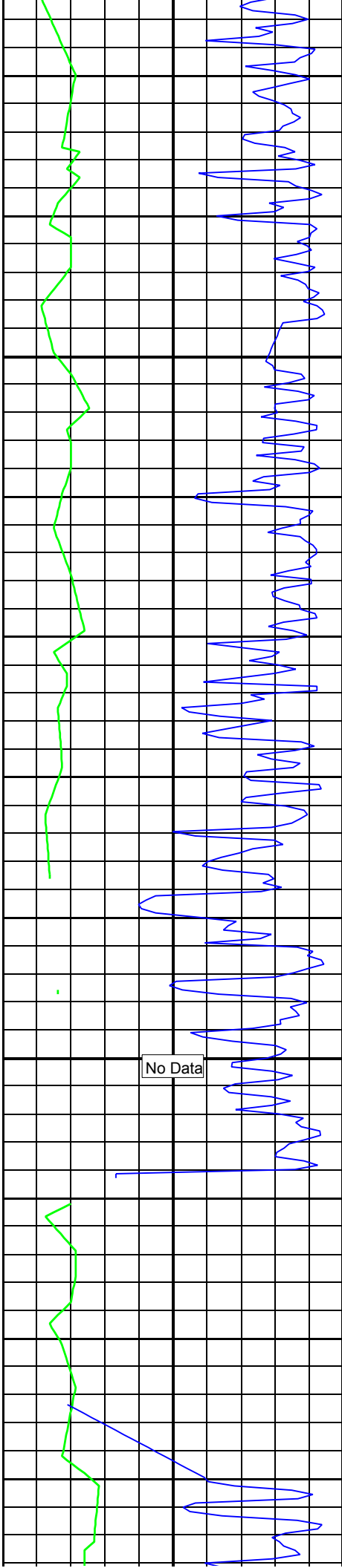
No Data



2100
TVD

2125
TVD

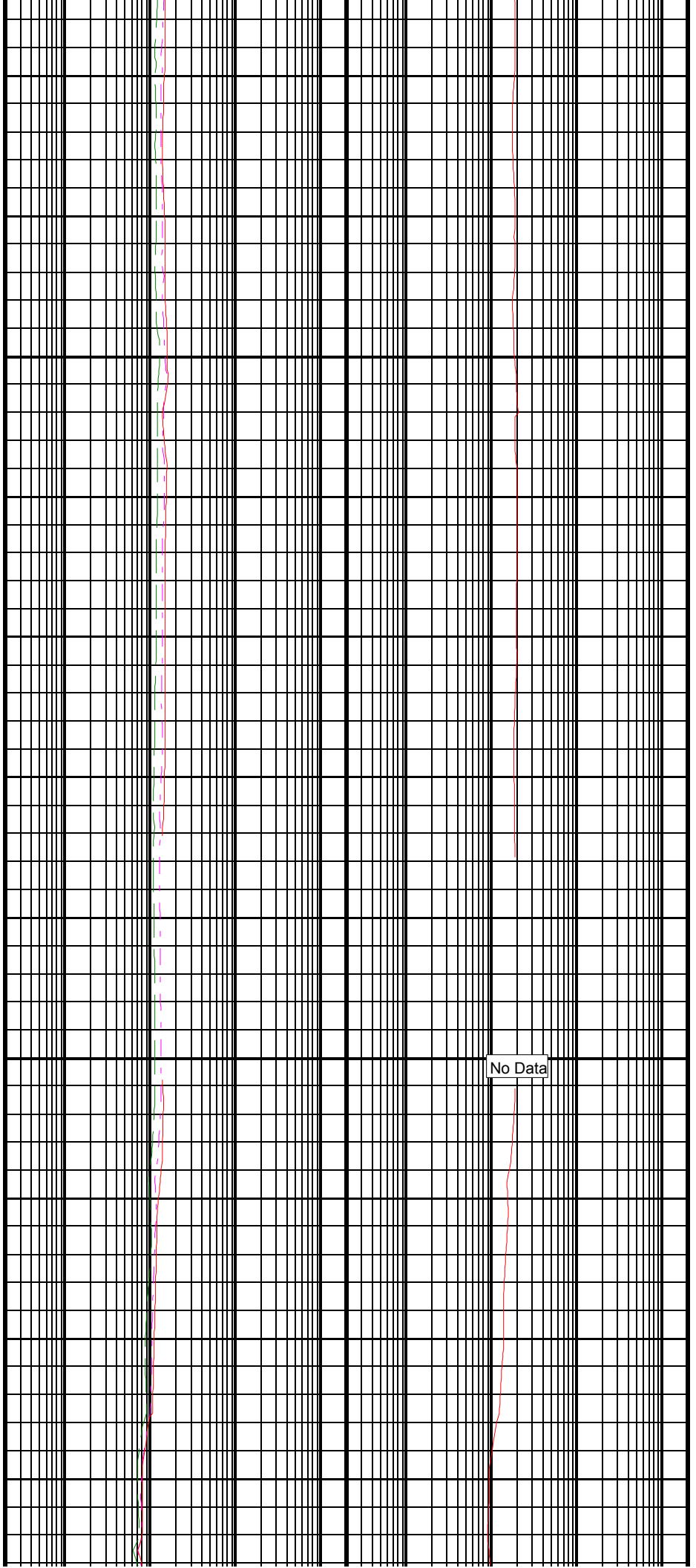


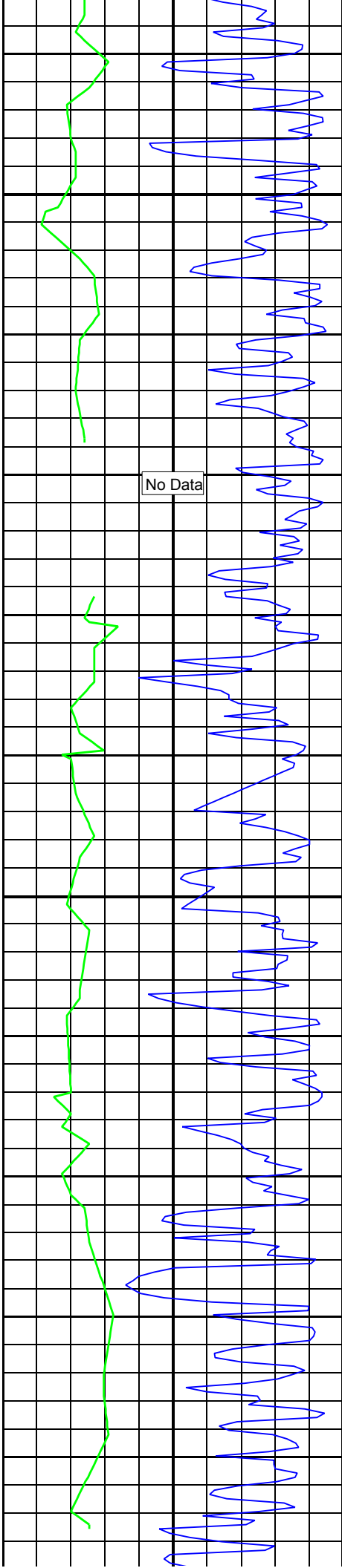


2150
TVD

2175
TVD

No Data

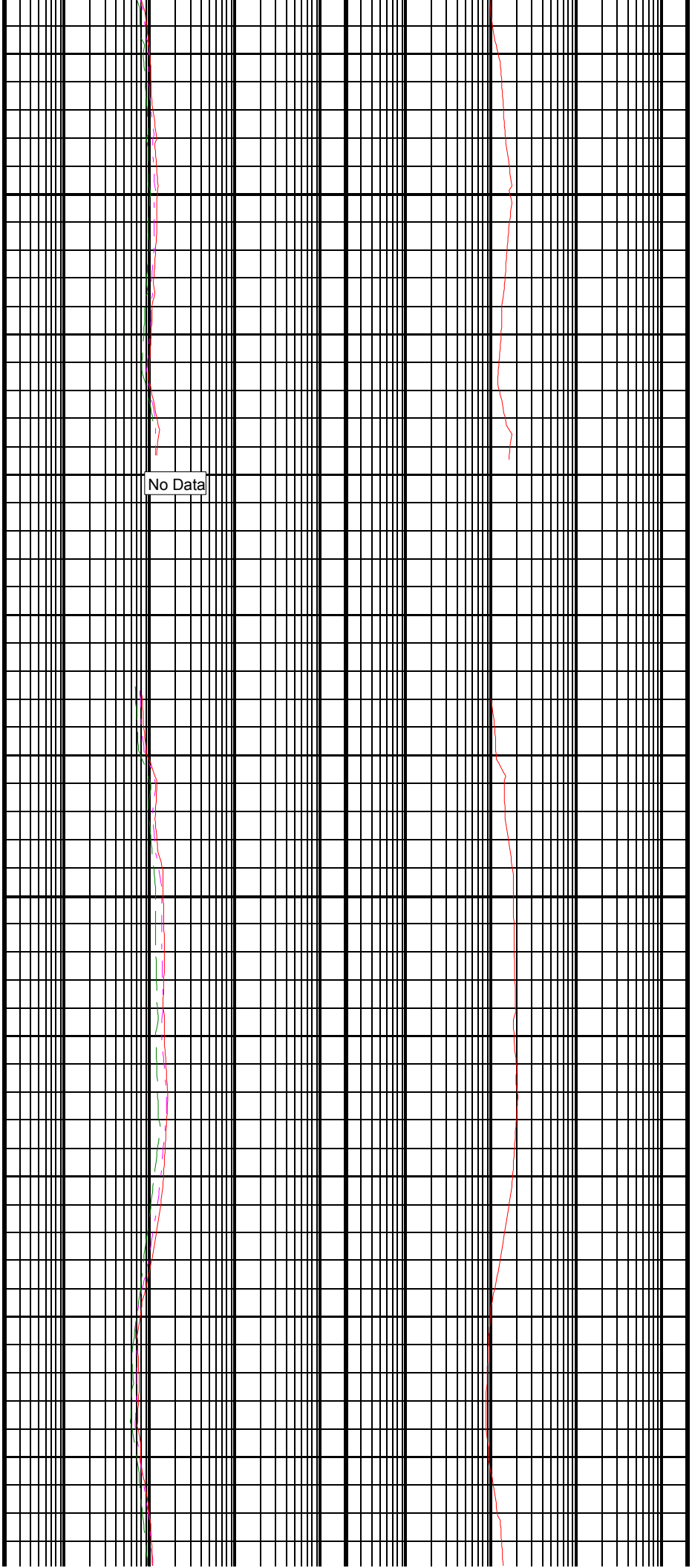


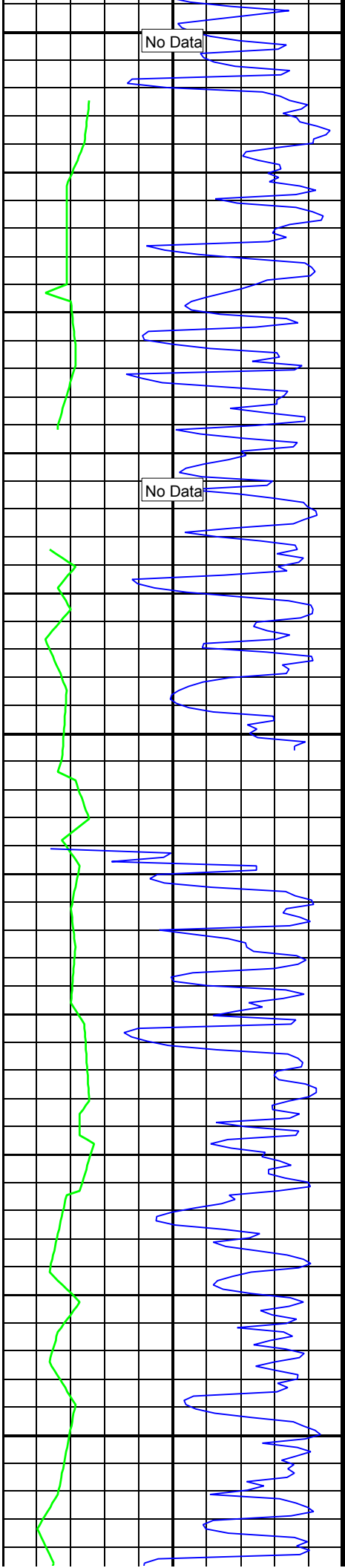


2200
TVD

No Data

2225
TVD

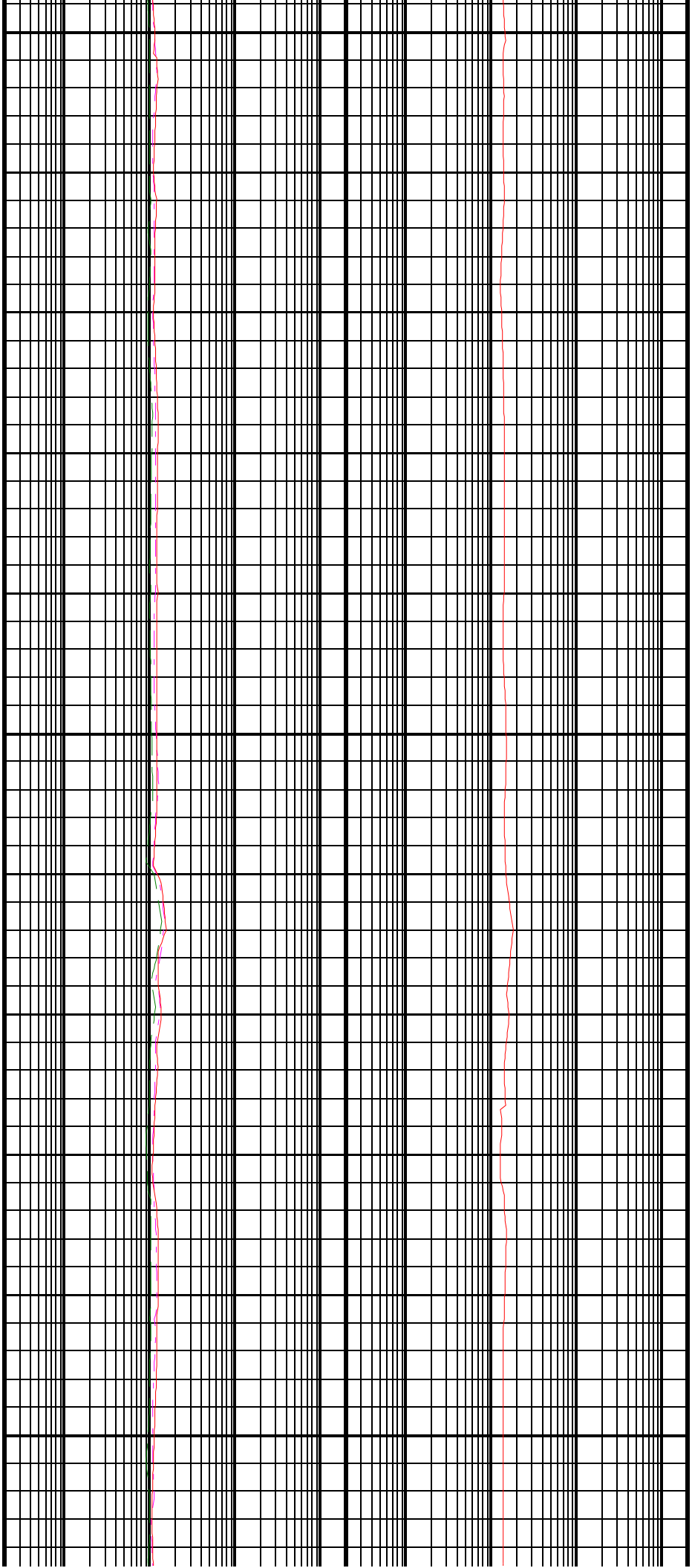


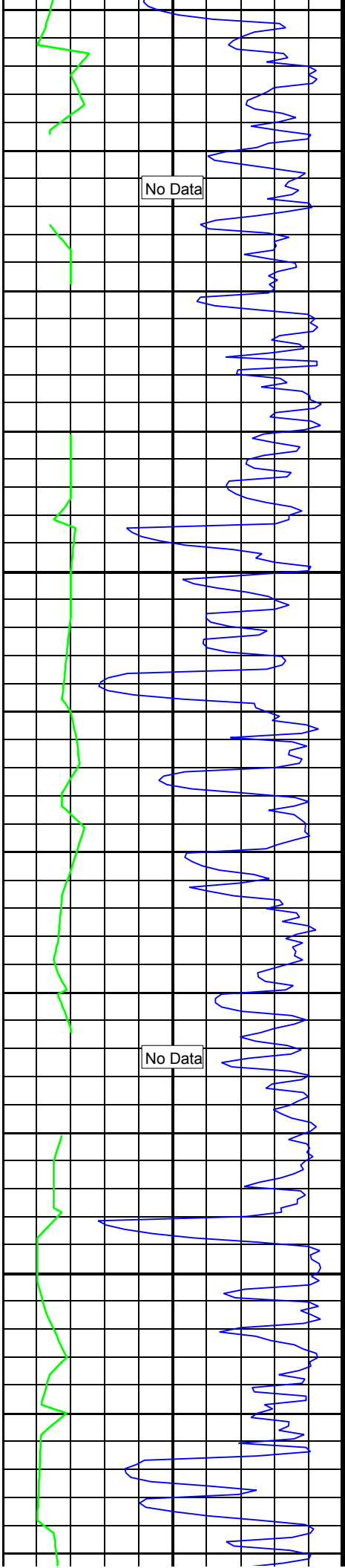


2250
TVD

2275
TVD

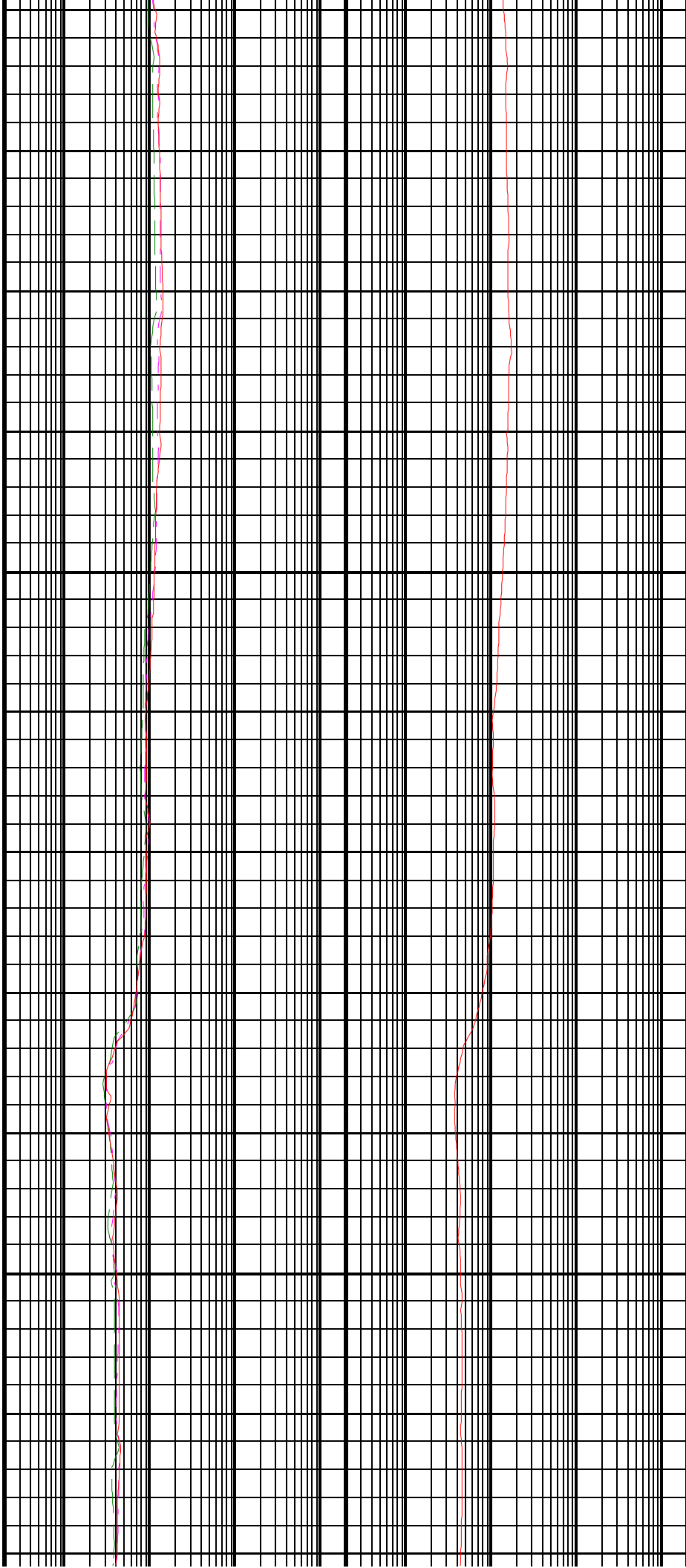
2300
TVD

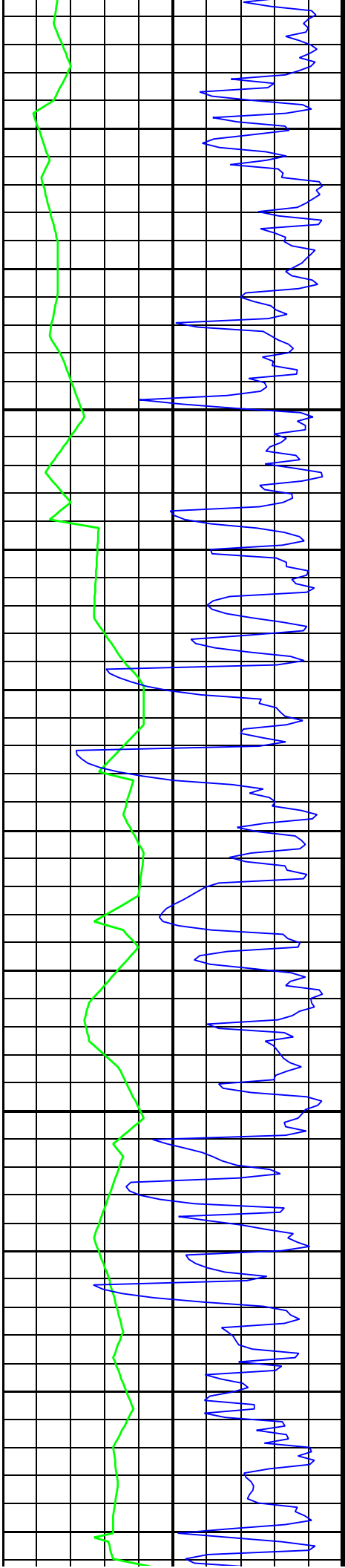




2325
TVD

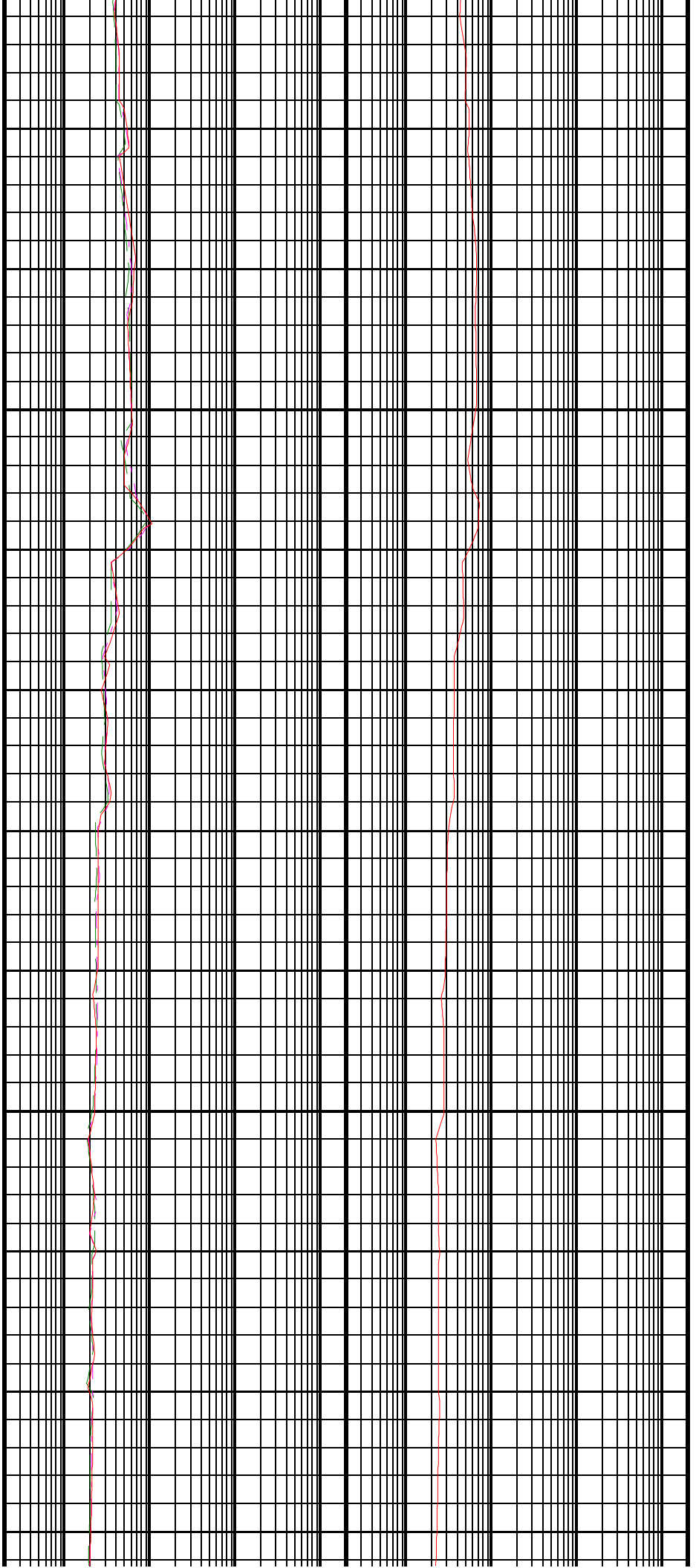
2350
TVD

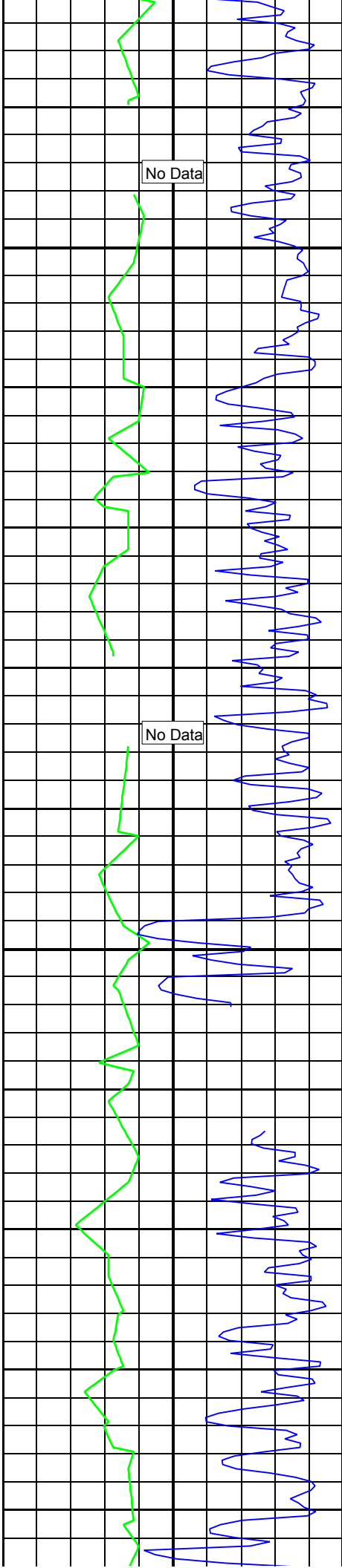




2375
TVD

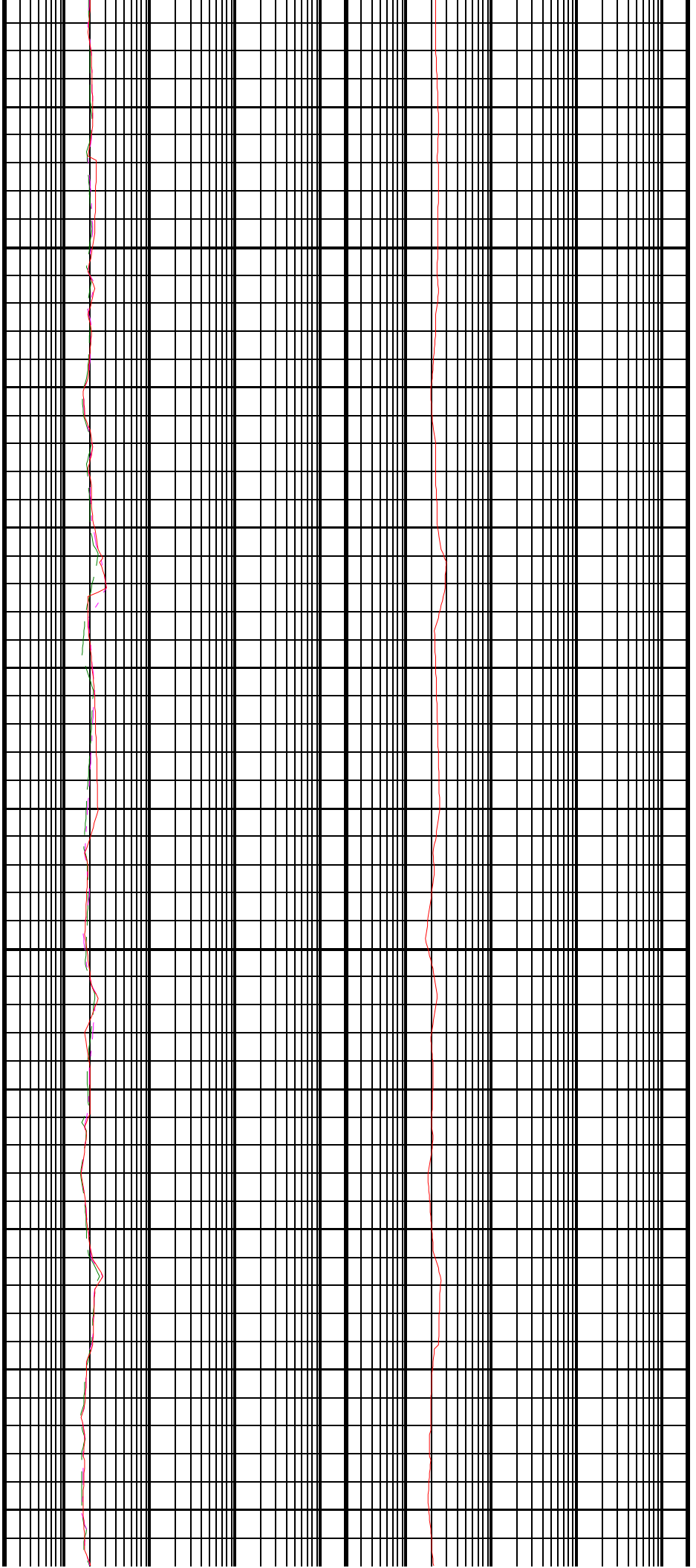
2400
TVD

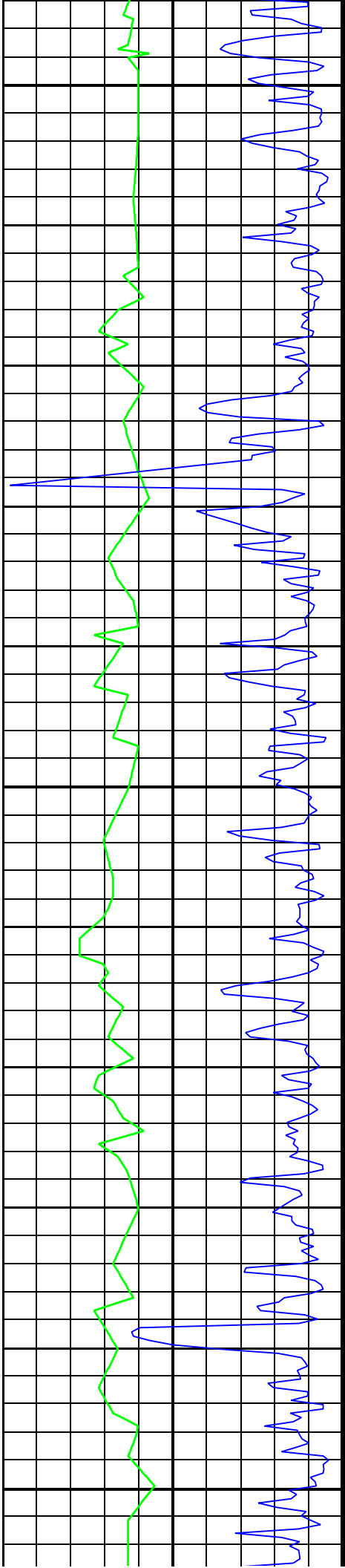




2425
TVD

2450
TVD

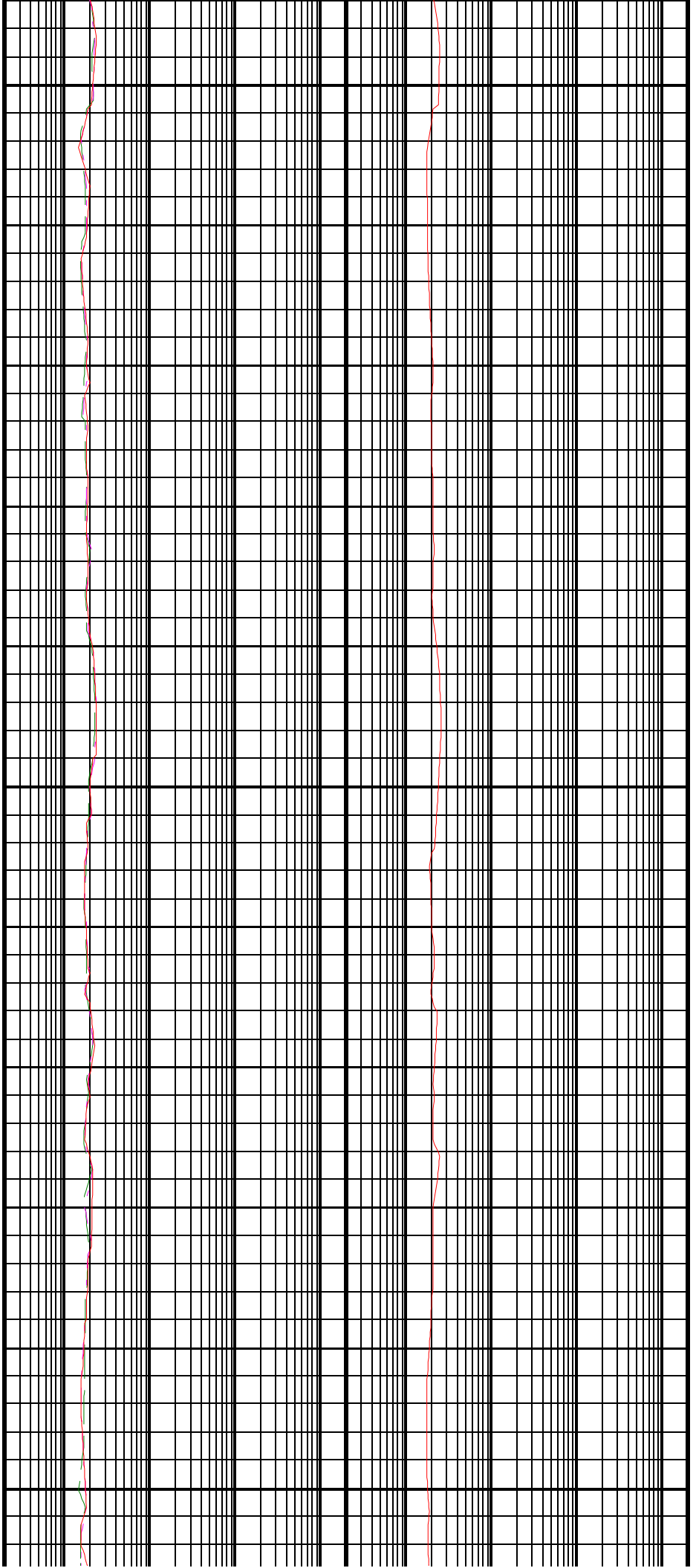


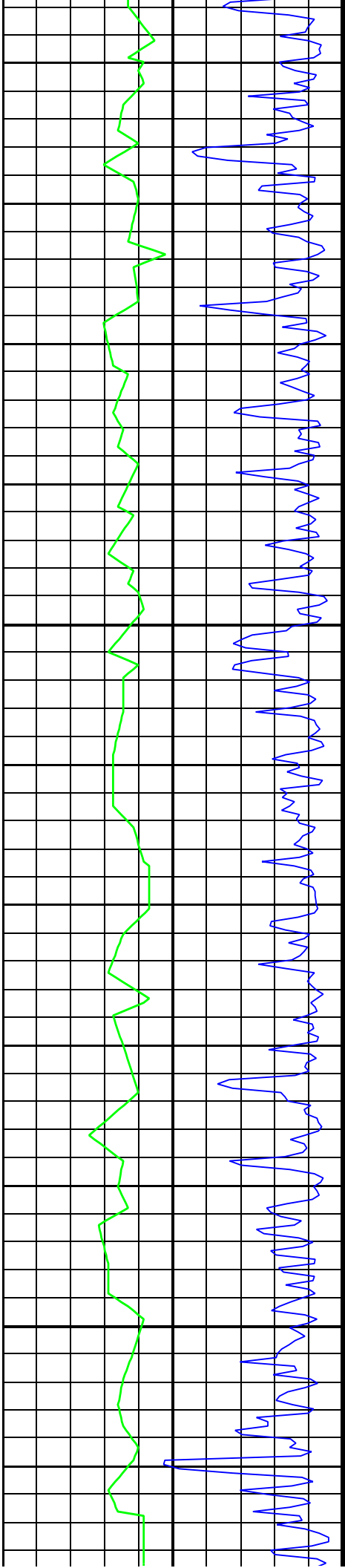


2475
TVD

2500
TVD

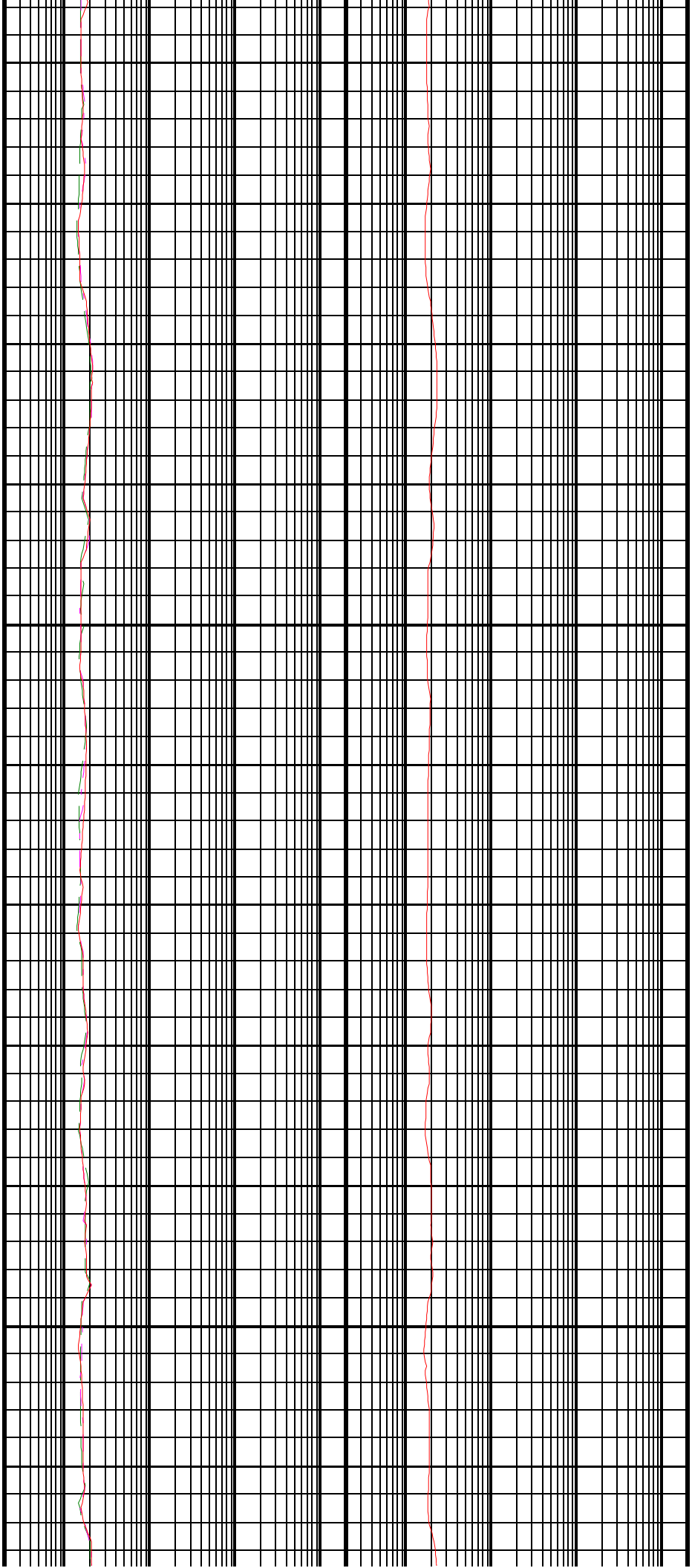
2525
TVD

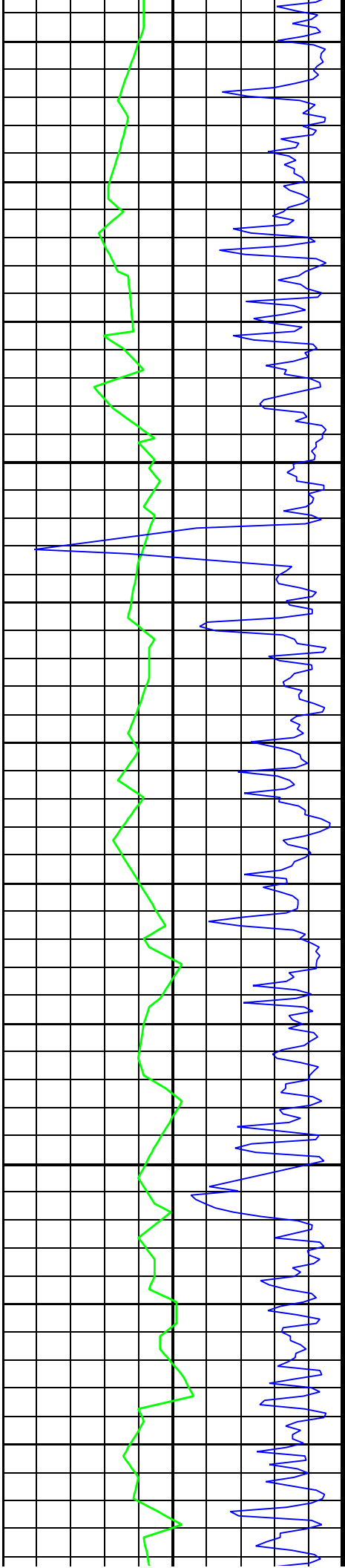




2550
TVD

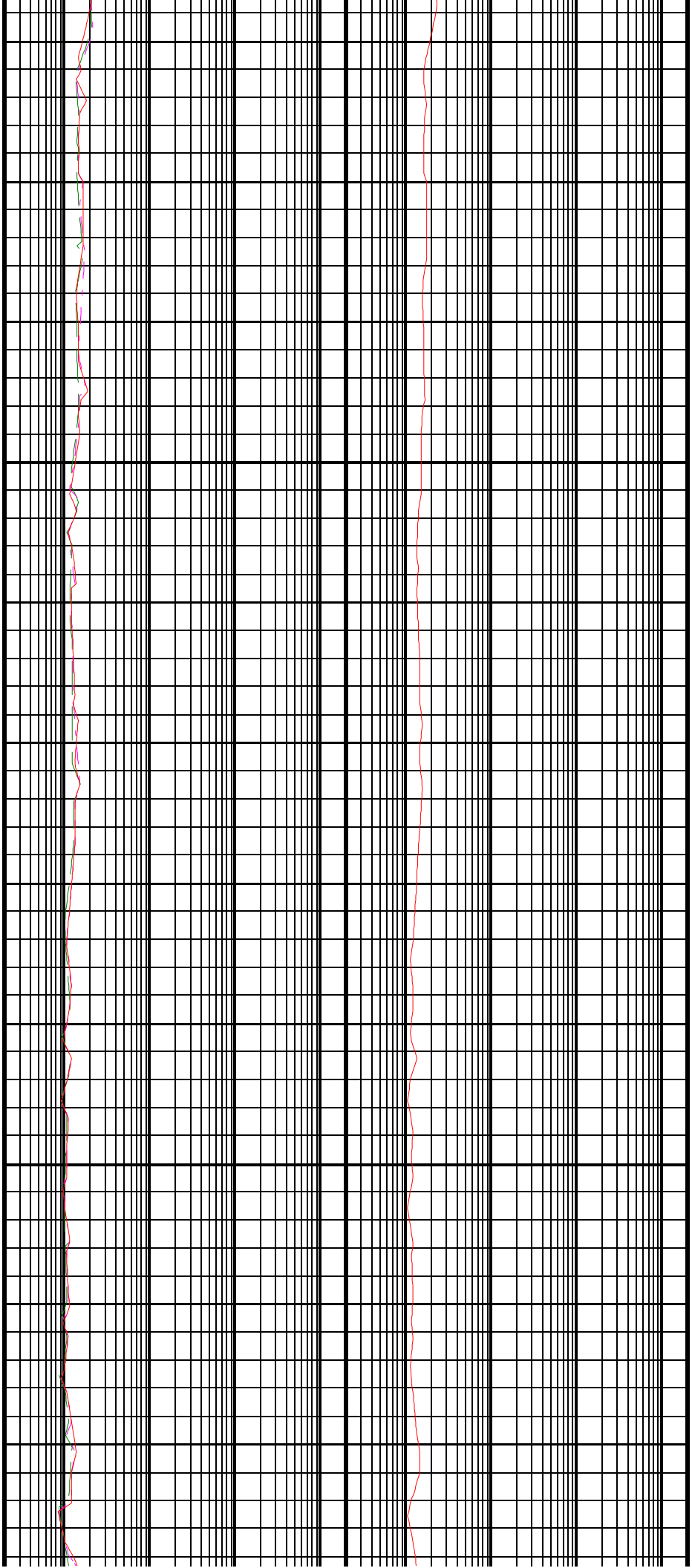
2575
TVD

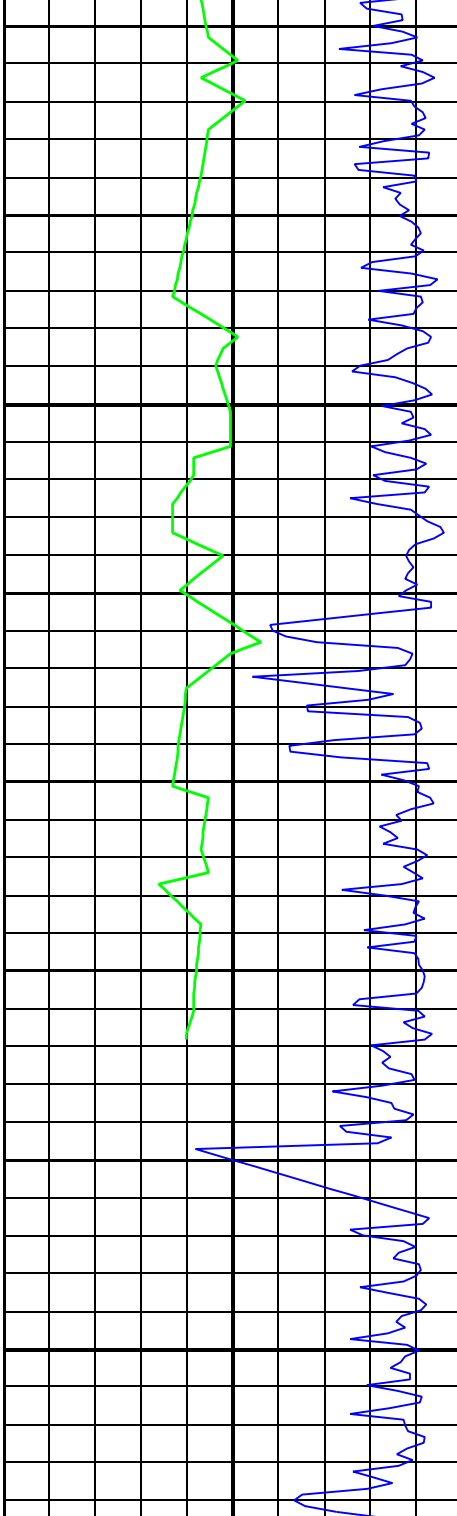




2600
TVD

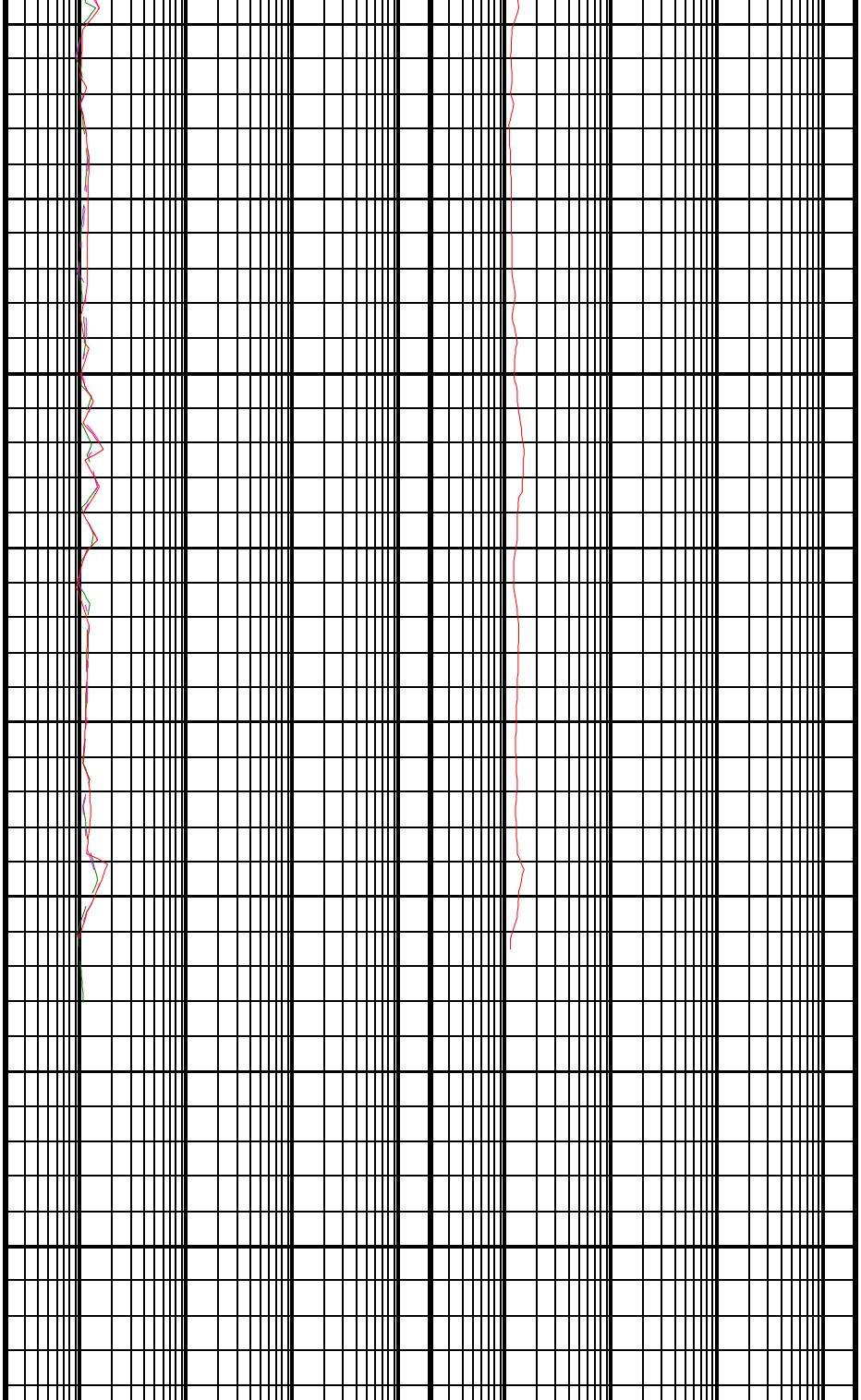
2625
TVD





2650
TVD

2675
TVD



ROP (ROP)		
1000	(M/HR)	0
ARC Gamma Ray, Real-Time (ARC_GR_RT)		
0	(GAPI)	200

ARC BHCorr Phase-Shift Resistivity		
16-in. at 2 MHz, Real-Time (P16H_RT)		
0.2	(OHMM)	2000

ARC BHCorr Attenuation Resistivity		
40-in. at 2 MHz, Real-Time (A40H_RT)		
0.2	(OHMM)	2000

ARC BHCorr Phase-Shift Resistivity		
28-in. at 2 MHz, Real-Time (P28H_RT)		
0.2	(OHMM)	2000

ARC BHCorr Phase-Shift Resistivity		
40-in. at 2 MHz, Real-Time (P40H_RT)		
0.2	(OHMM)	2000

IDEAL Version: ID13_0C_08
IDF

ARC9A-AA id13_0c_02
SWD9-AA id13_0c_02
ADN id13_0c_02

MWD_10 id13_0c_02
RAB id13_0c_02