

# Madfish-1 Run4 VISION Resistivity RT 200TVD

ARC9A-AA id13\_0c\_02  
 SWD9-AA id13\_0c\_02  
 ADN id13\_0c\_02

MWD\_10 id13\_0c\_02  
 RAB id13\_0c\_02

Format: VISION Resistivity Vertical Scale: 1:200 Graphics File Created: 03-Dec-2008 10:33

**ARC BHCorr Phase-Shift Resistivity**  
**40-in. at 2 MHz, Real-Time (P40H\_RT)**  
 0.2 (OHMM) 2000

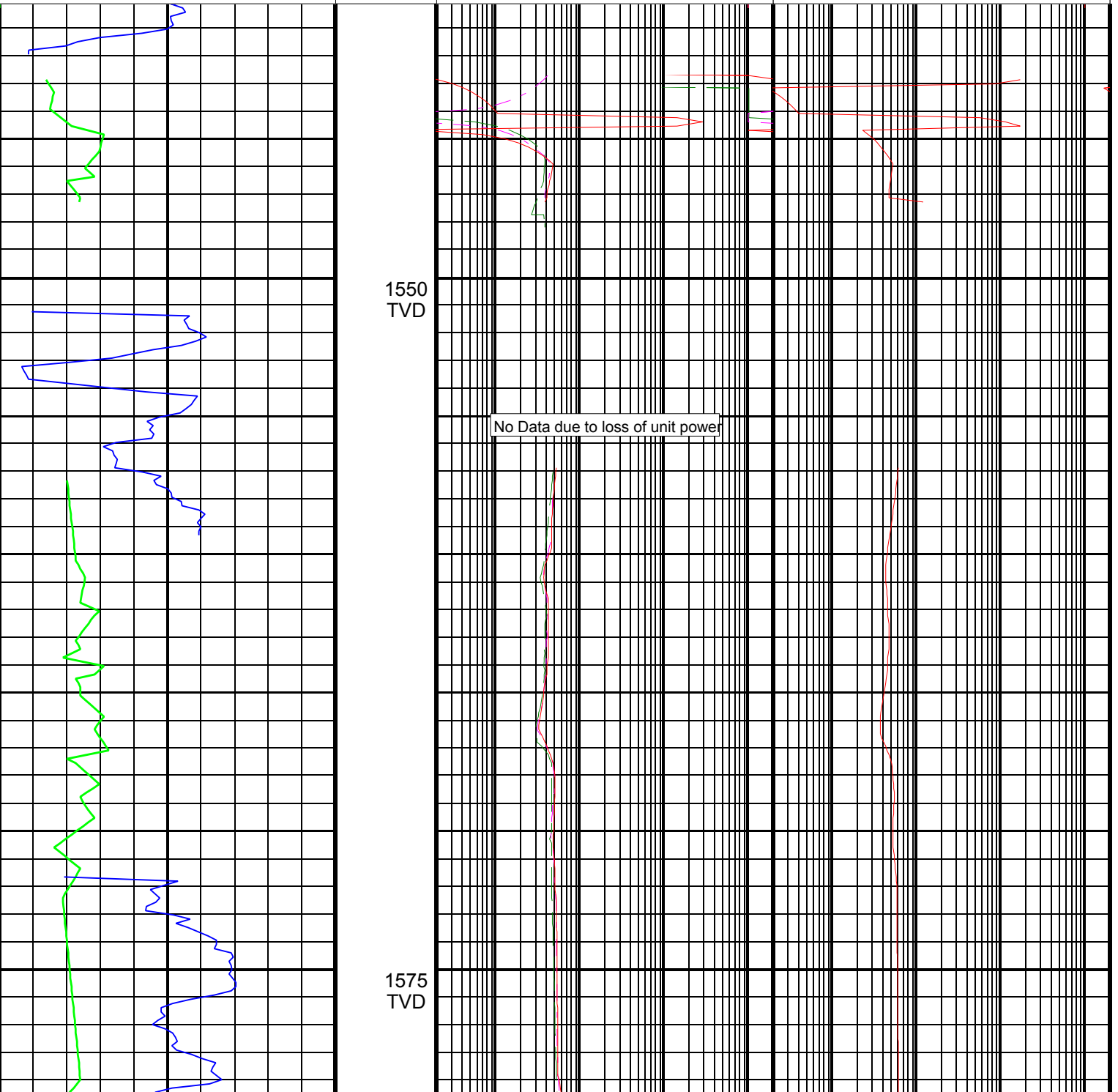
**ARC BHCorr Phase-Shift Resistivity**  
**28-in. at 2 MHz, Real-Time (P28H\_RT)**  
 0.2 (OHMM) 2000

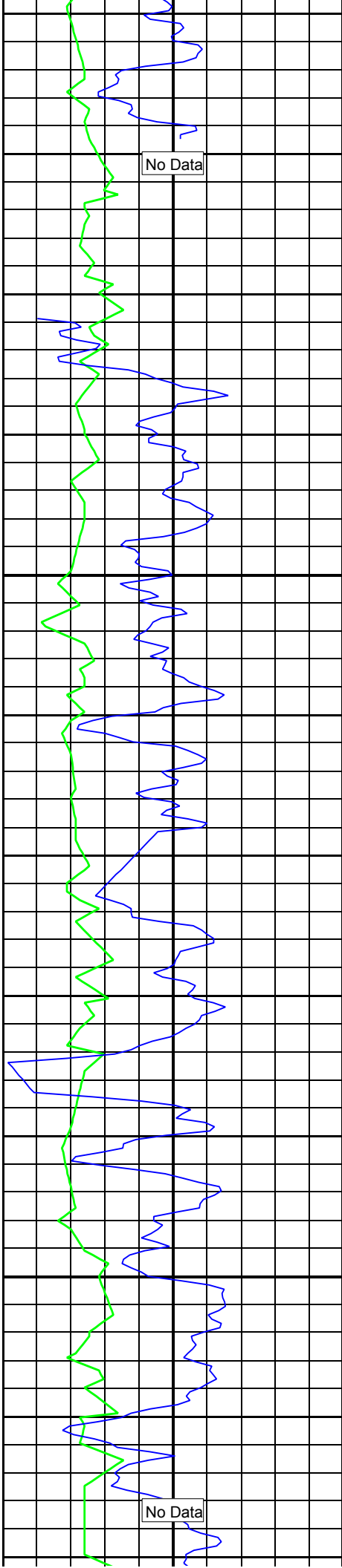
**ARC BHCorr Phase-Shift Resistivity**  
**16-in. at 2 MHz, Real-Time (P16H\_RT)**  
 0.2 (OHMM) 2000

**ARC BHCorr Attenuation Resistivity**  
**40-in. at 2 MHz, Real-Time (A40H\_RT)**  
 0.2 (OHMM) 2000

**ARC Gamma Ray, Real-Time (ARC\_GR\_RT)**  
 0 (GAPI) 200

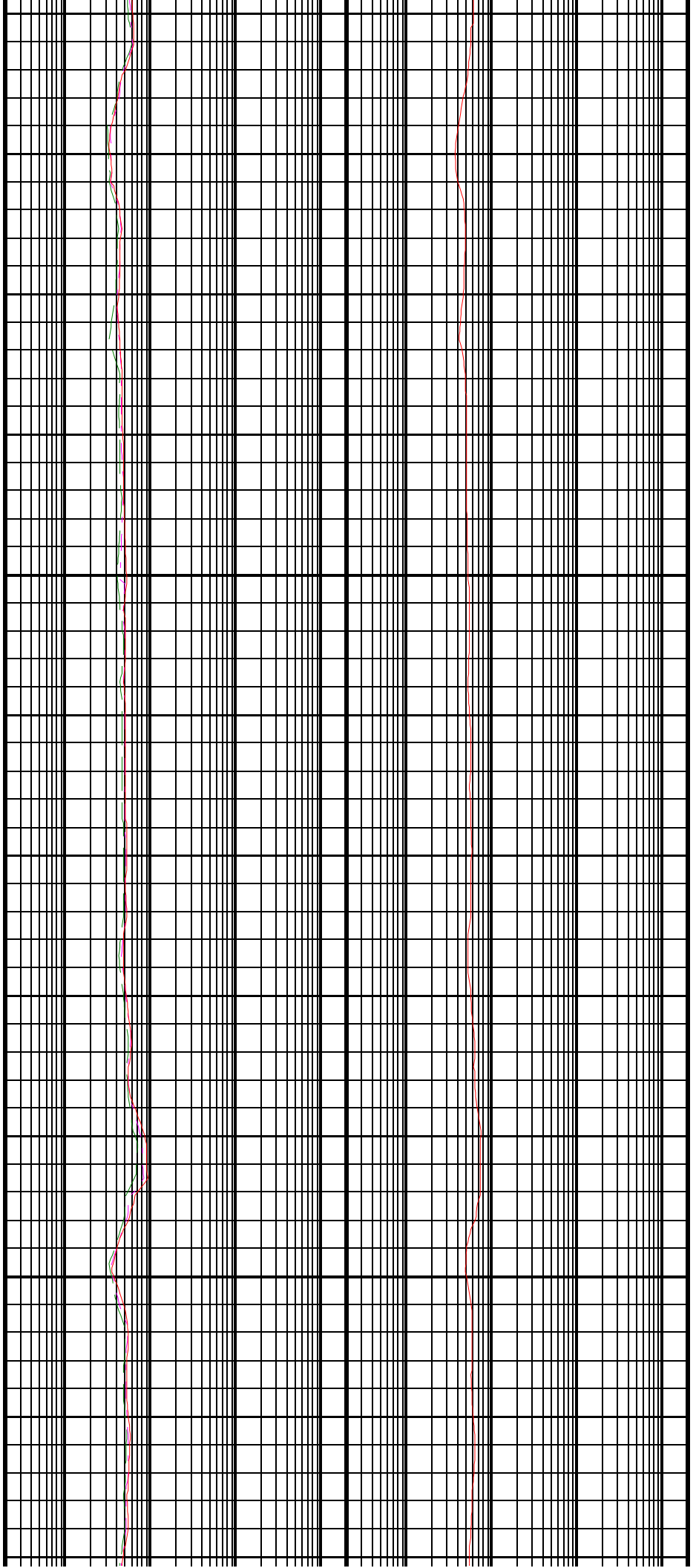
**ROP (ROP)**  
 200 (M/HR) 0

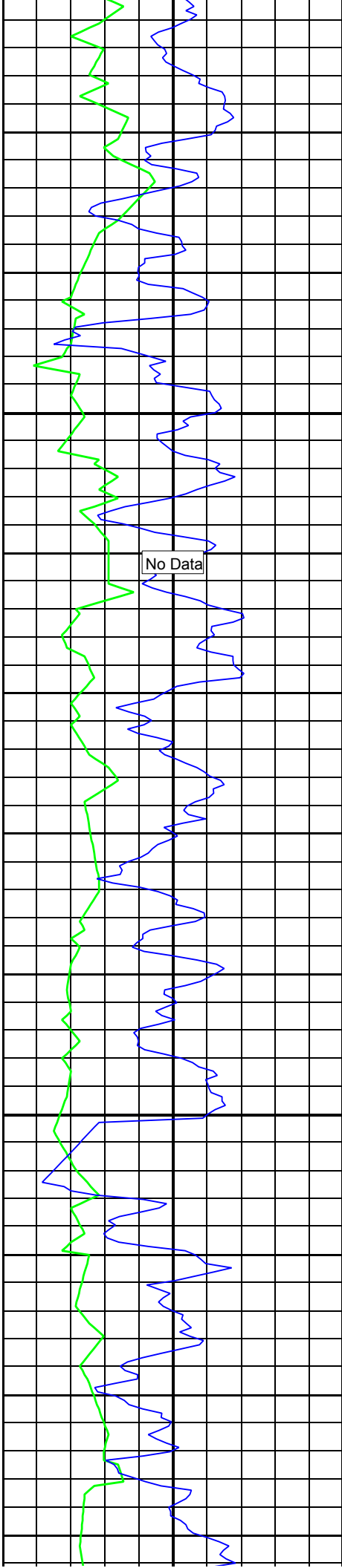




1600  
TVD

1625  
TVD

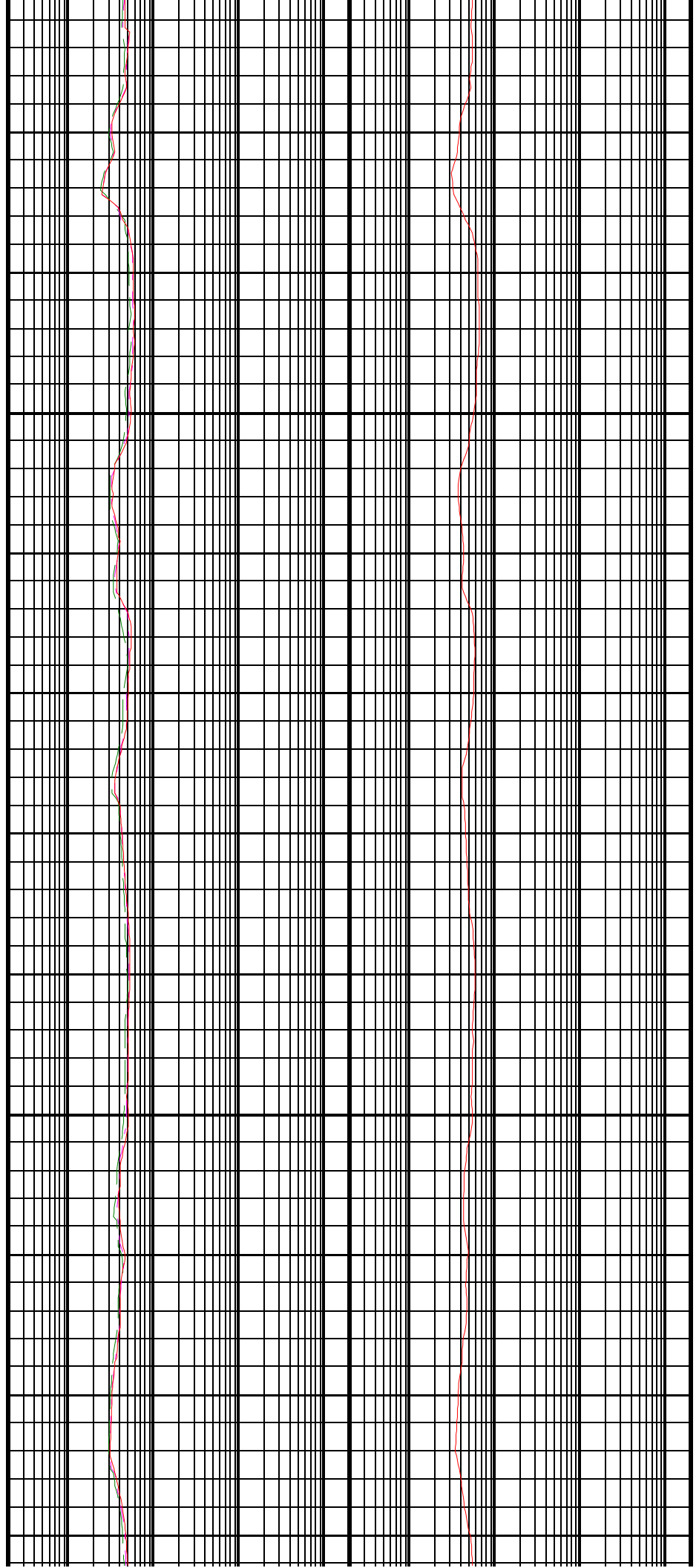


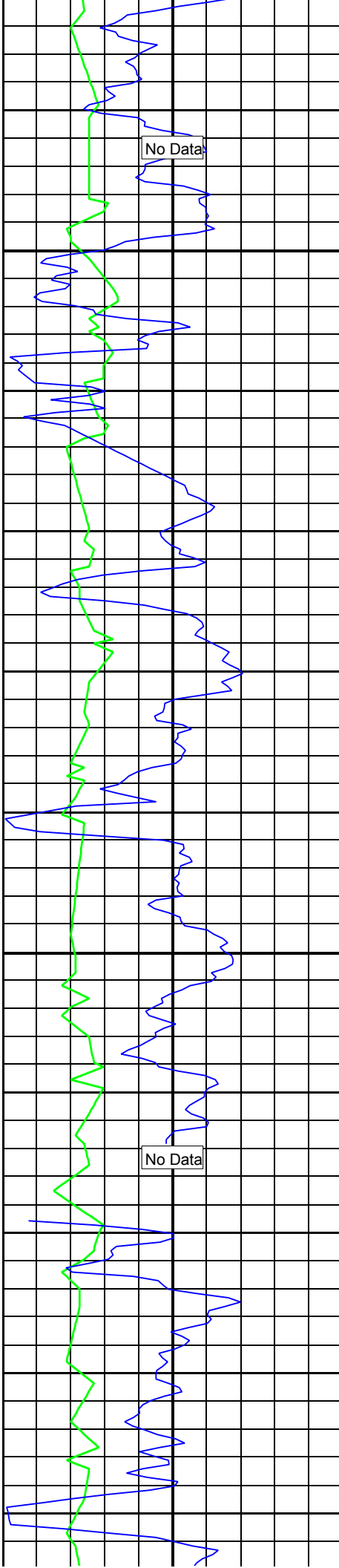


1650  
TVD

1675  
TVD

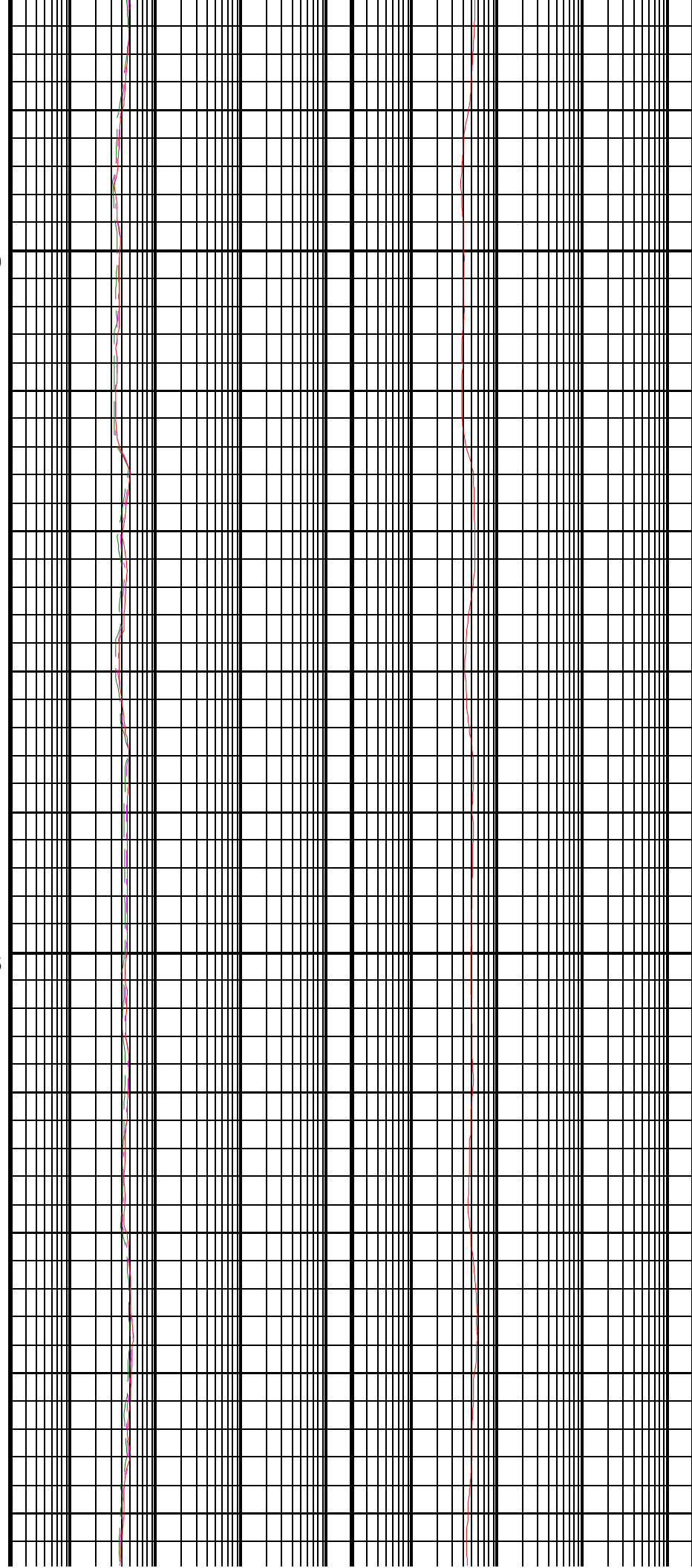
No Data

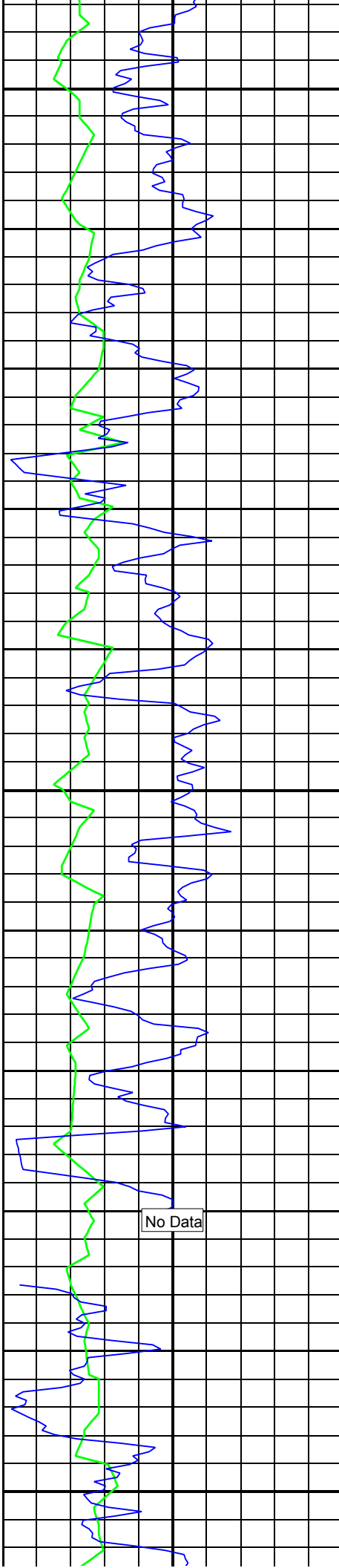




1700  
TVD

1725  
TVD

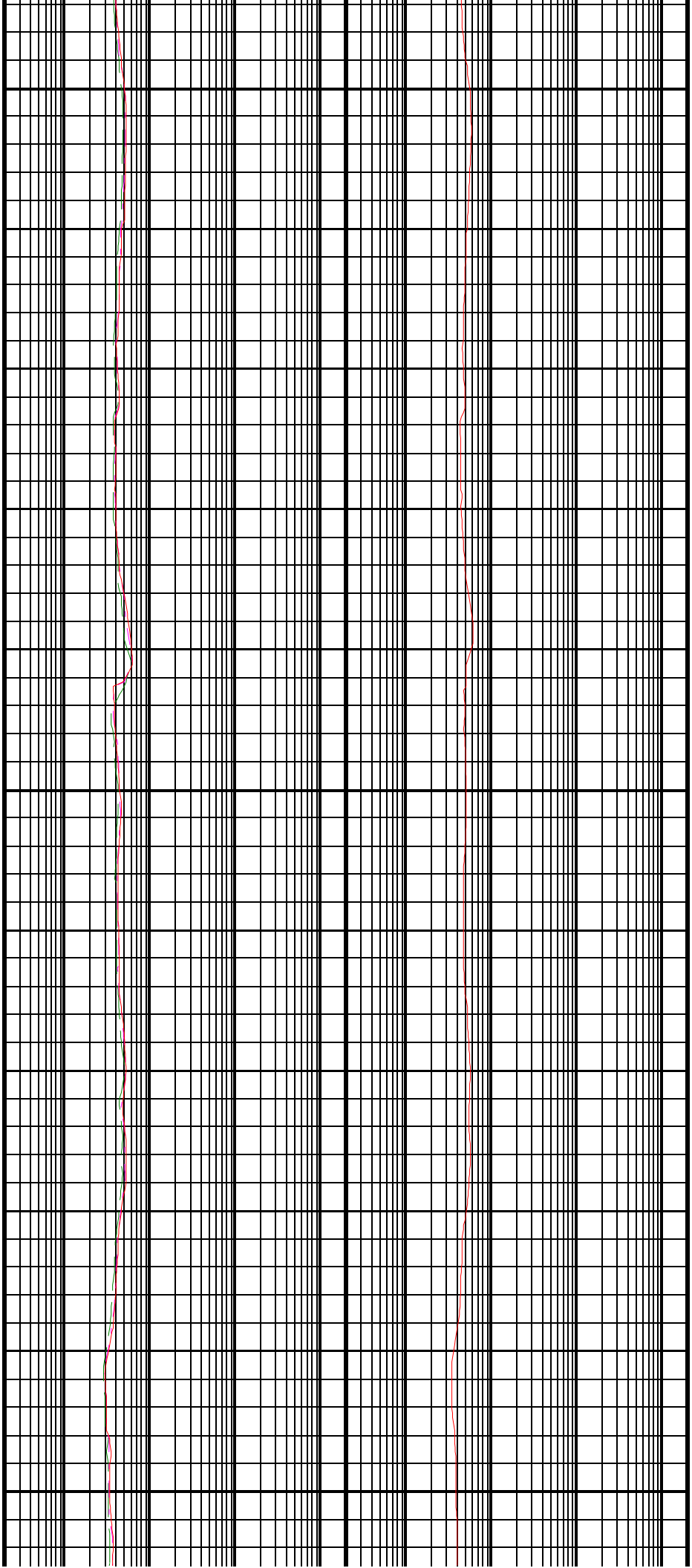


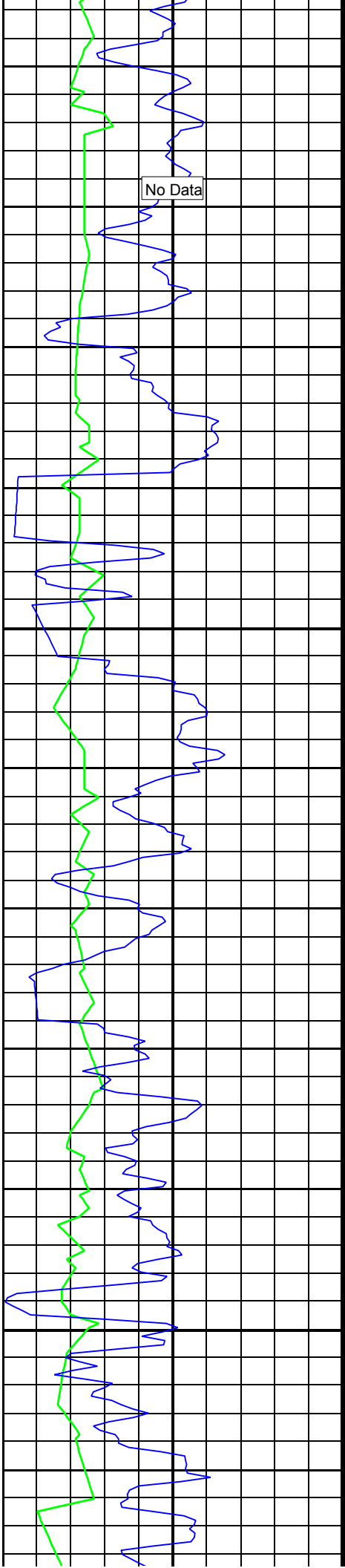


1750  
TVD

1775  
TVD

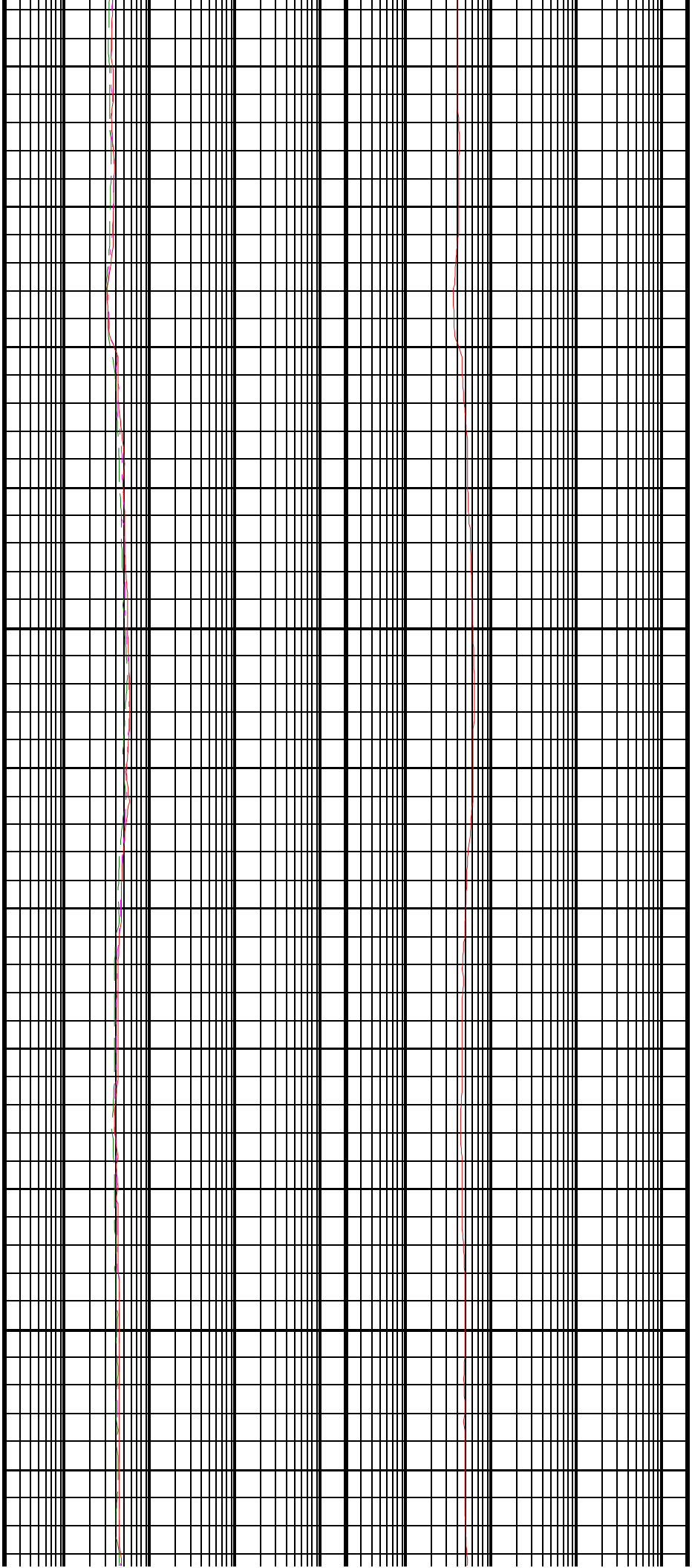
1800  
TVD

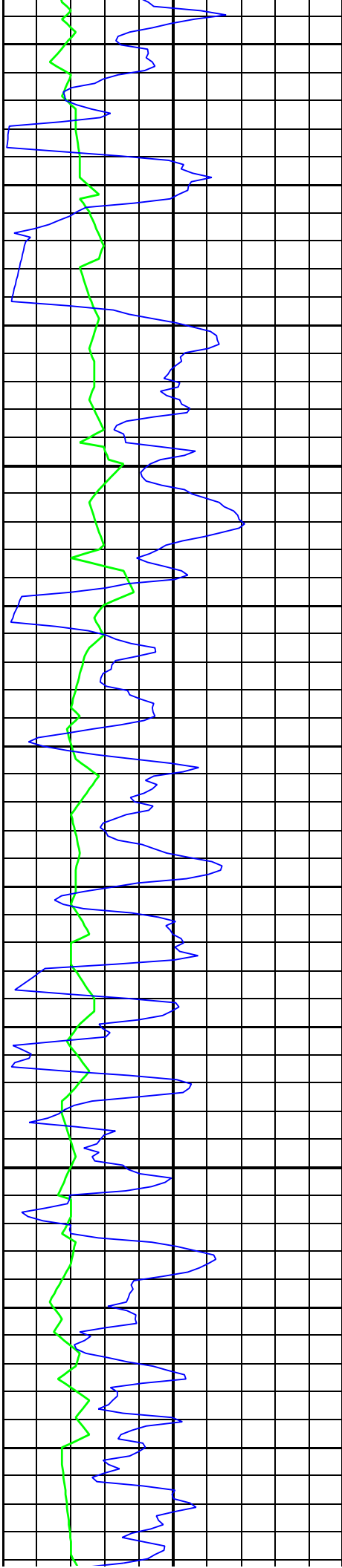




1825  
TVD

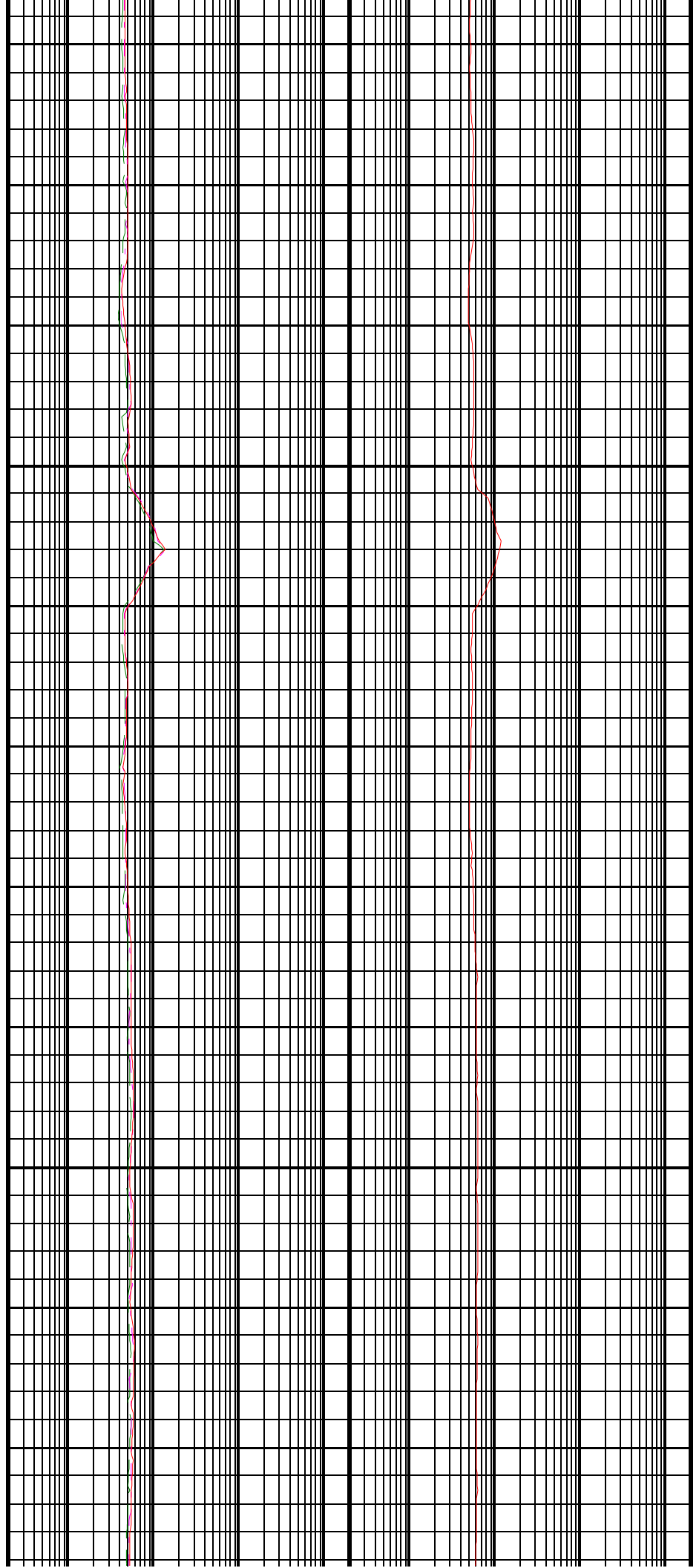
1850  
TVD

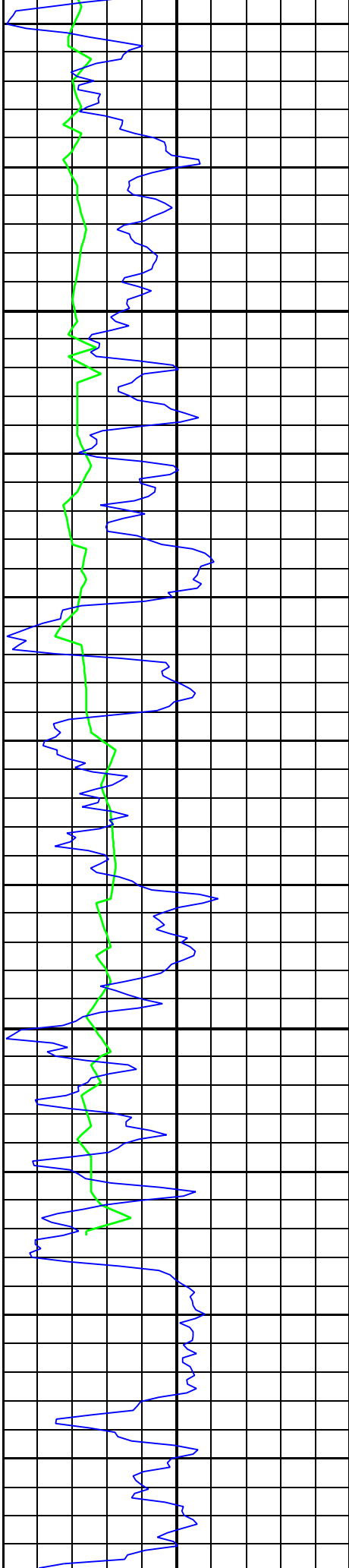




1875  
TVD

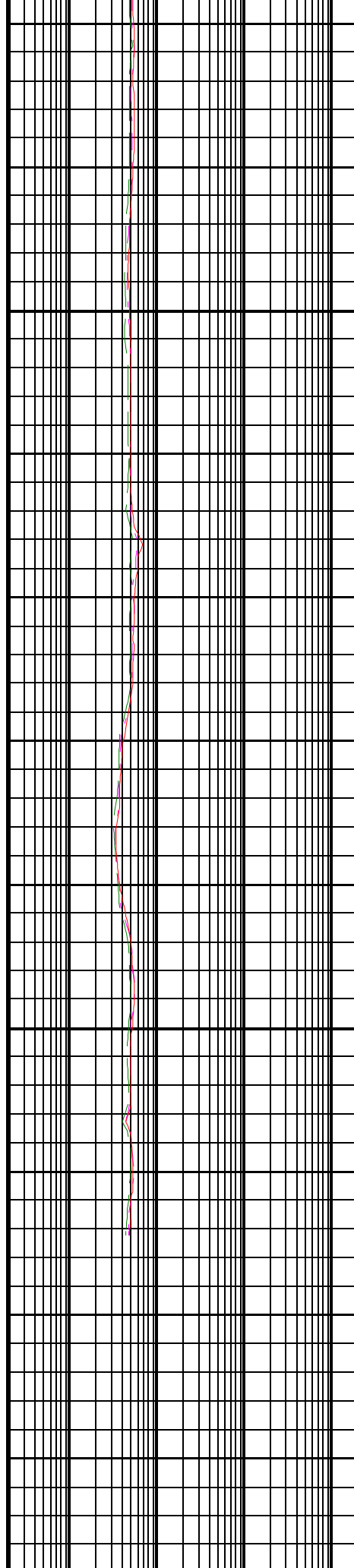
1900  
TVD



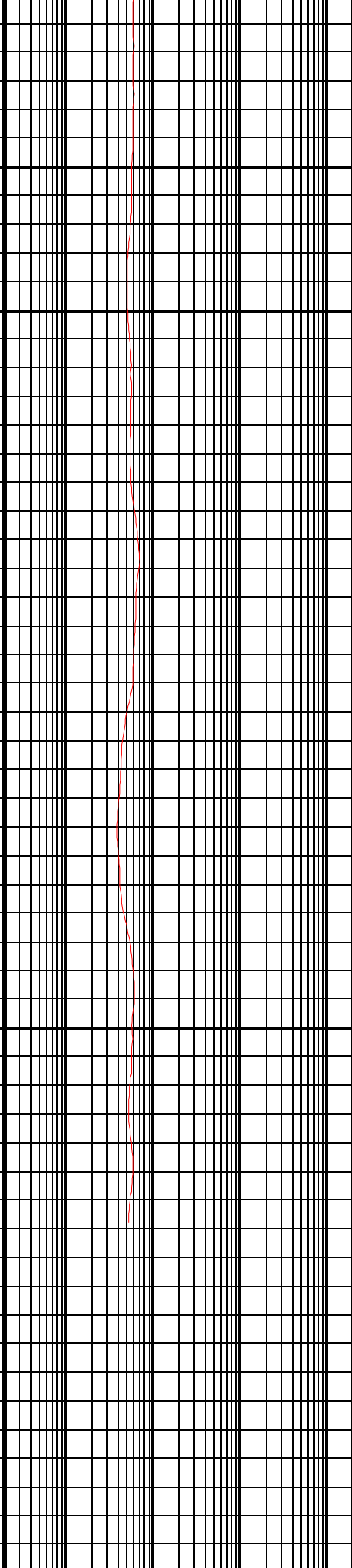


1925  
TVD

1950  
TVD



ARC BHCorr Phase-Shift Resistivity  
40 in. x 10 MHz Real Time (B40H RT)



ARC BHCorr Attenuation Resistivity  
40 in. x 10 MHz Real Time (A40H RT)



|                                      |        |     |
|--------------------------------------|--------|-----|
| 200                                  | (M/HR) | 0   |
| ARC Gamma Ray, Real-Time (ARC_GR_RT) |        |     |
| 0                                    | (GAPI) | 200 |

|  |  |      |
|--|--|------|
| 0.2  | 16-in. at 2 MHz, Real-Time (P16H_RT)<br>(OHMM) | 2000 |
| ARC BHCorr Phase-Shift Resistivity<br>28-in. at 2 MHz, Real-Time (P28H_RT) |  |      |
| 0.2  | (OHMM)   | 2000 |
| ARC BHCorr Phase-Shift Resistivity<br>40-in. at 2 MHz, Real-Time (P40H_RT) |  |      |
| 0.2  | (OHMM)   | 2000 |

|     |  |      |
|-----|--|------|
| 0.2 | 40-in. at 2 MHz, Real-Time (A40H_RT)<br>(OHMM) | 2000 |
|-----|--|------|

**IDEAL Version: ID13\_0C\_08**

IDF

|          |            |        |            |
|----------|------------|--------|------------|
| ARC9A-AA | id13_0c_02 | MWD_10 | id13_0c_02 |
| SWD9-AA  | id13_0c_02 | RAB    | id13_0c_02 |
| ADN      | id13_0c_02 |        |            |