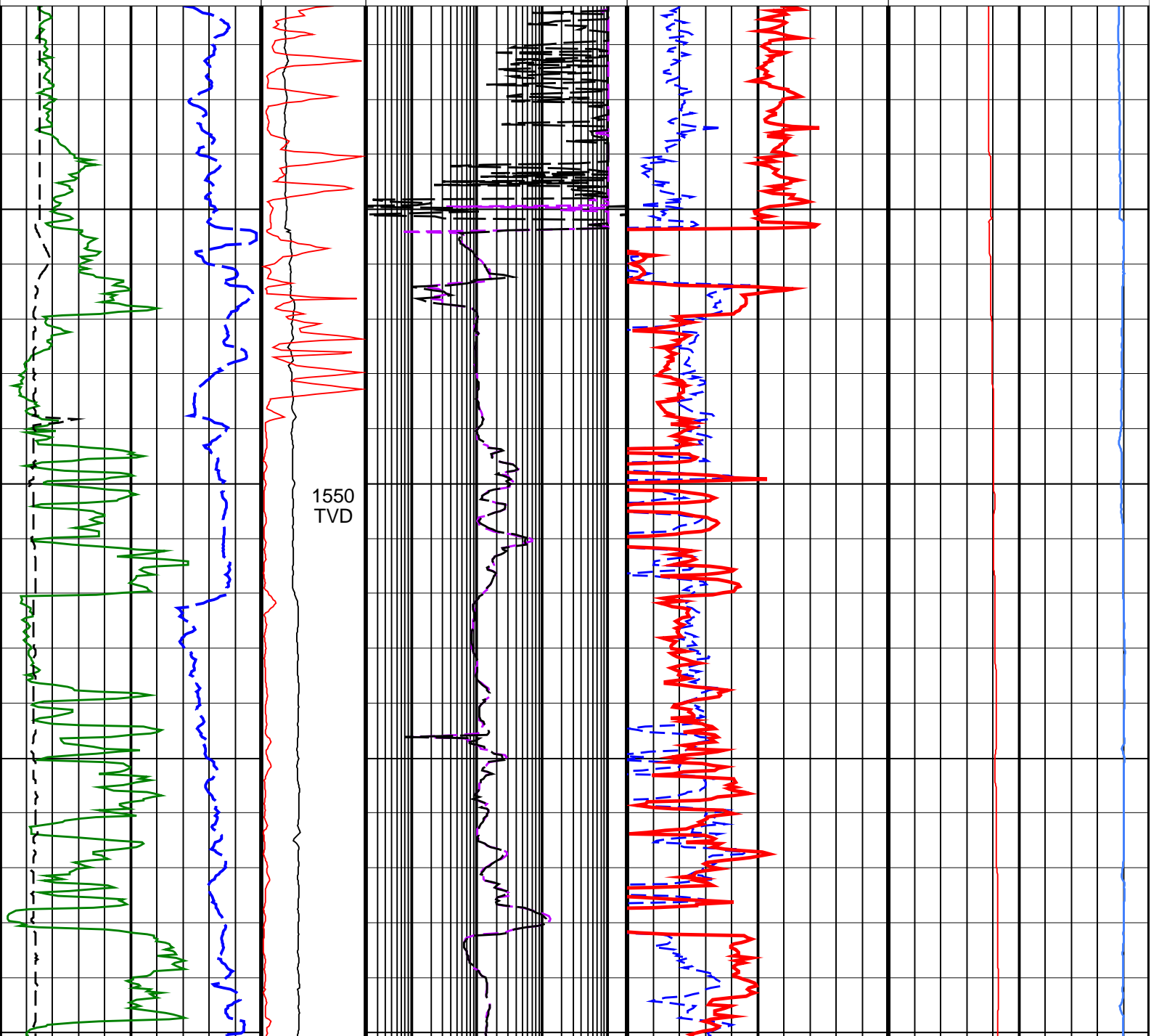
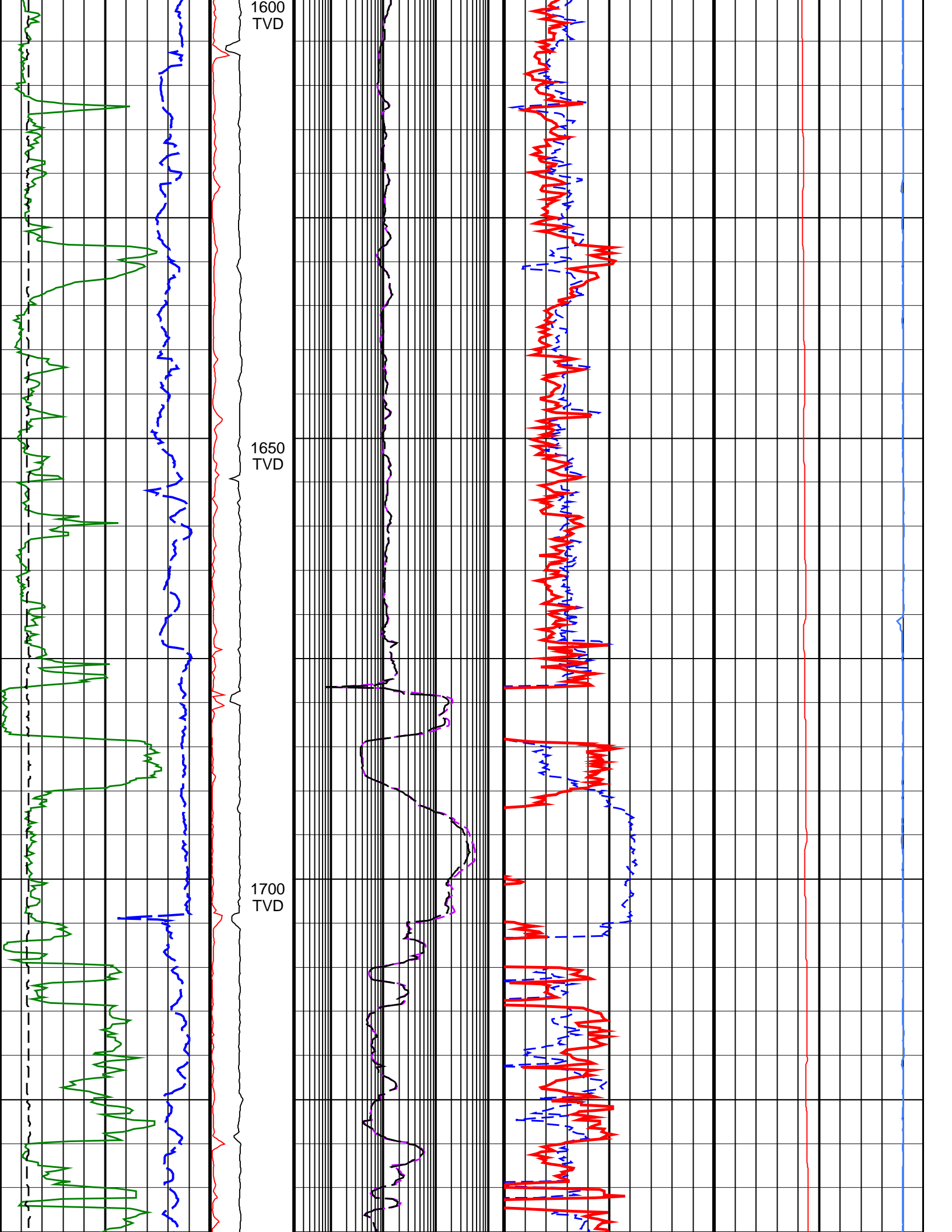


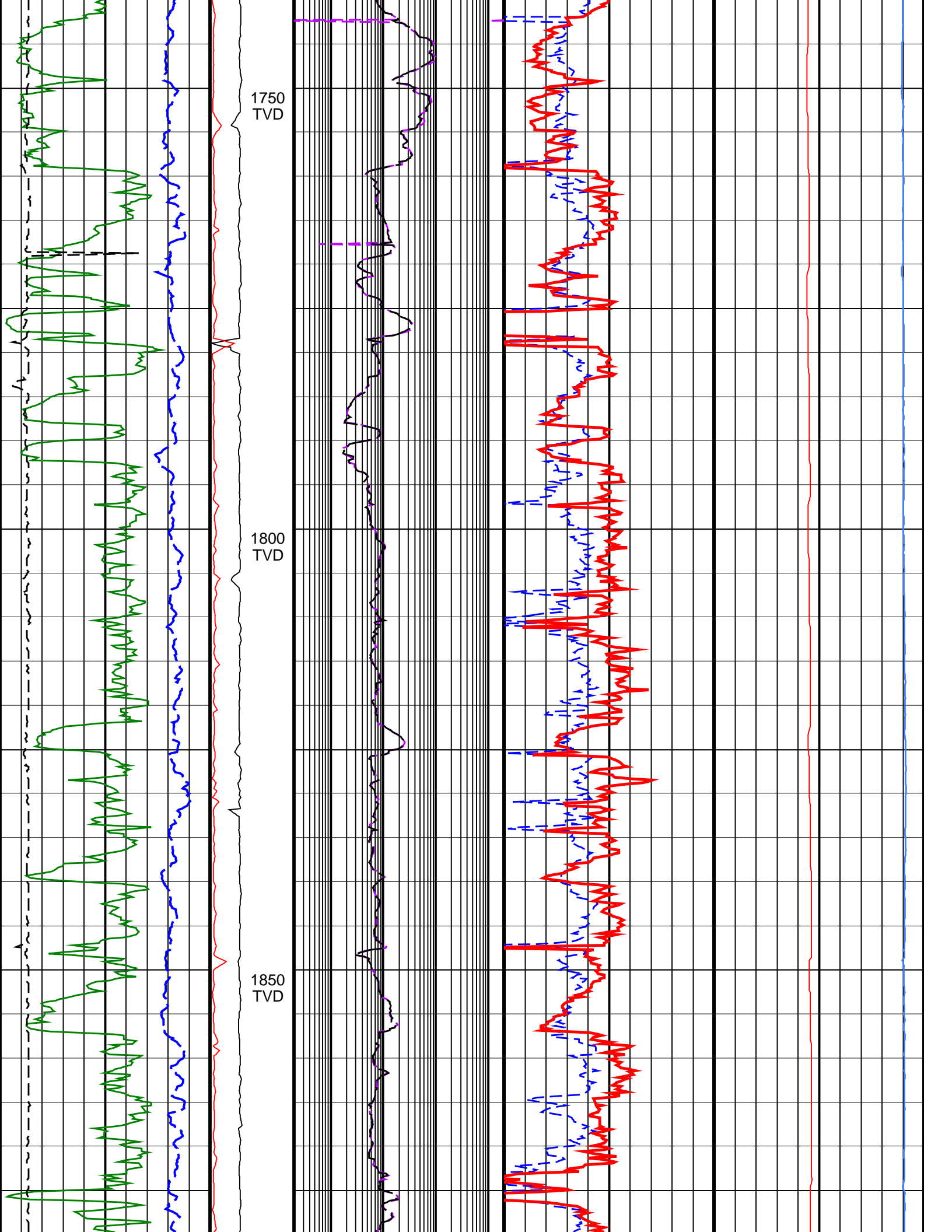
SNA A26A LWD (EcoScope) RT 500TVD

Format: EcoScope TVD RT Vertical Scale: 1:500 Graphics File Created: 11-Dec-2008 18:27

Ultrasonic Caliper, Average Diameter, Real-Time, Computed Downhole (UCAV_DH_ECO_RT) 8 (IN) 20	MWD Collar RPM (CRPM_RT) (RPM) 0 400	ARC Phase Shift Resistivity 40 inch at 2 MHz, Real-Time (P40H_ECO_RT) (OHMM) 0.2 2000	Bulk Density from Neutron, Average, Real-Time (RHON_ECO_RT) (G/C3) 1.85 2.85	Equivalent Circulating Density, Real-Time (ECD_ECO_RT) (LB/G) 0 14
Gamma Ray, Average, Real-Time (GRMA_ECO_RT) (GAPI) 0 200	PKPK_RPM (Stick_RT) (RPM) 0 400	ARC Phase Shift Resistivity 28 inch at 2 MHz, Real-Time (P28H_ECO_RT) (OHMM) 0.2 2000	Best Thermal Neutron Porosity, Average, Real-Time (BPHI_ECO_RT) (PU) 45 -15	Downhole Annulus Temperature, Real Time, Computed Downhole (DHAT_DH_ECO_RT) (DEGC) 0 200
ROP*5 (ROP5) (M/HR) 200 0				



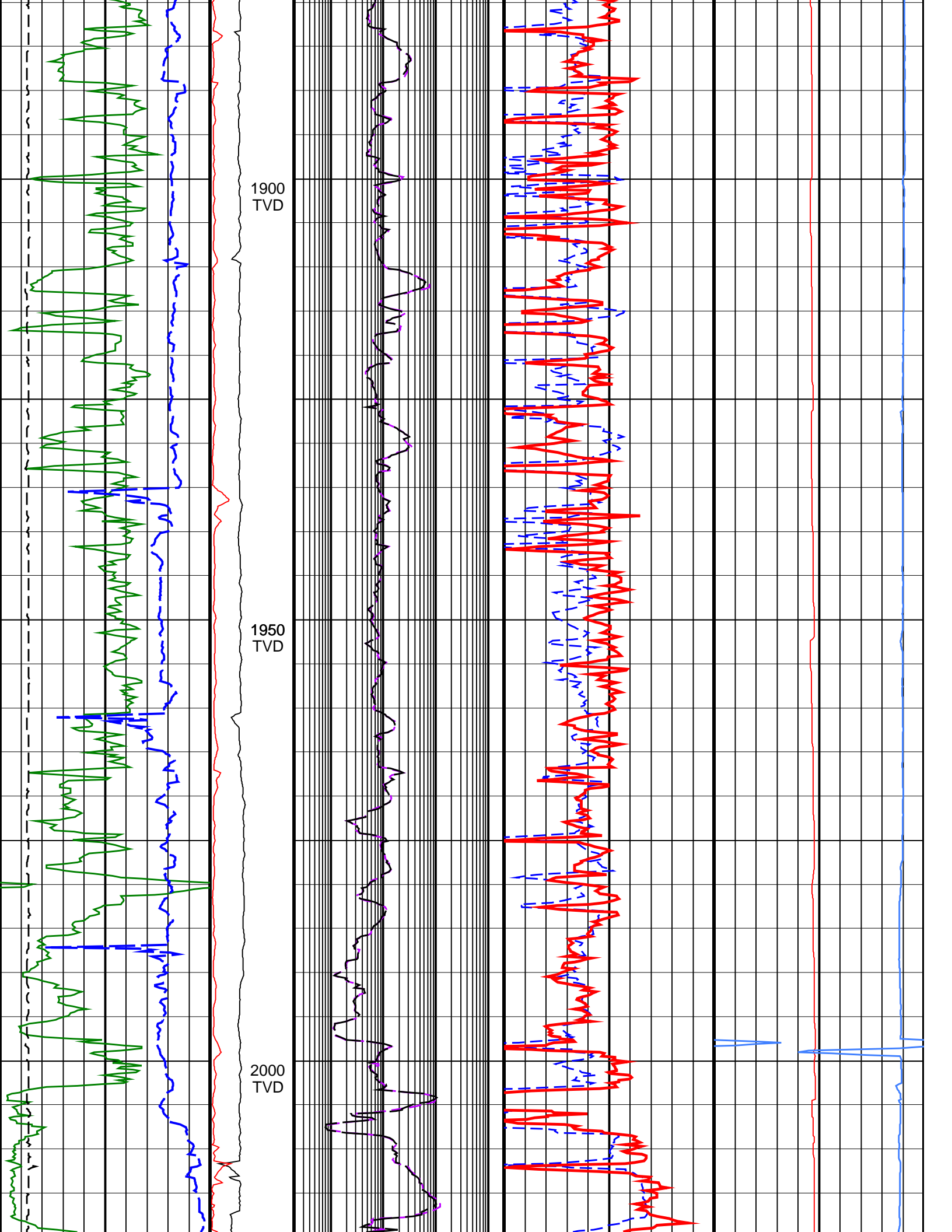


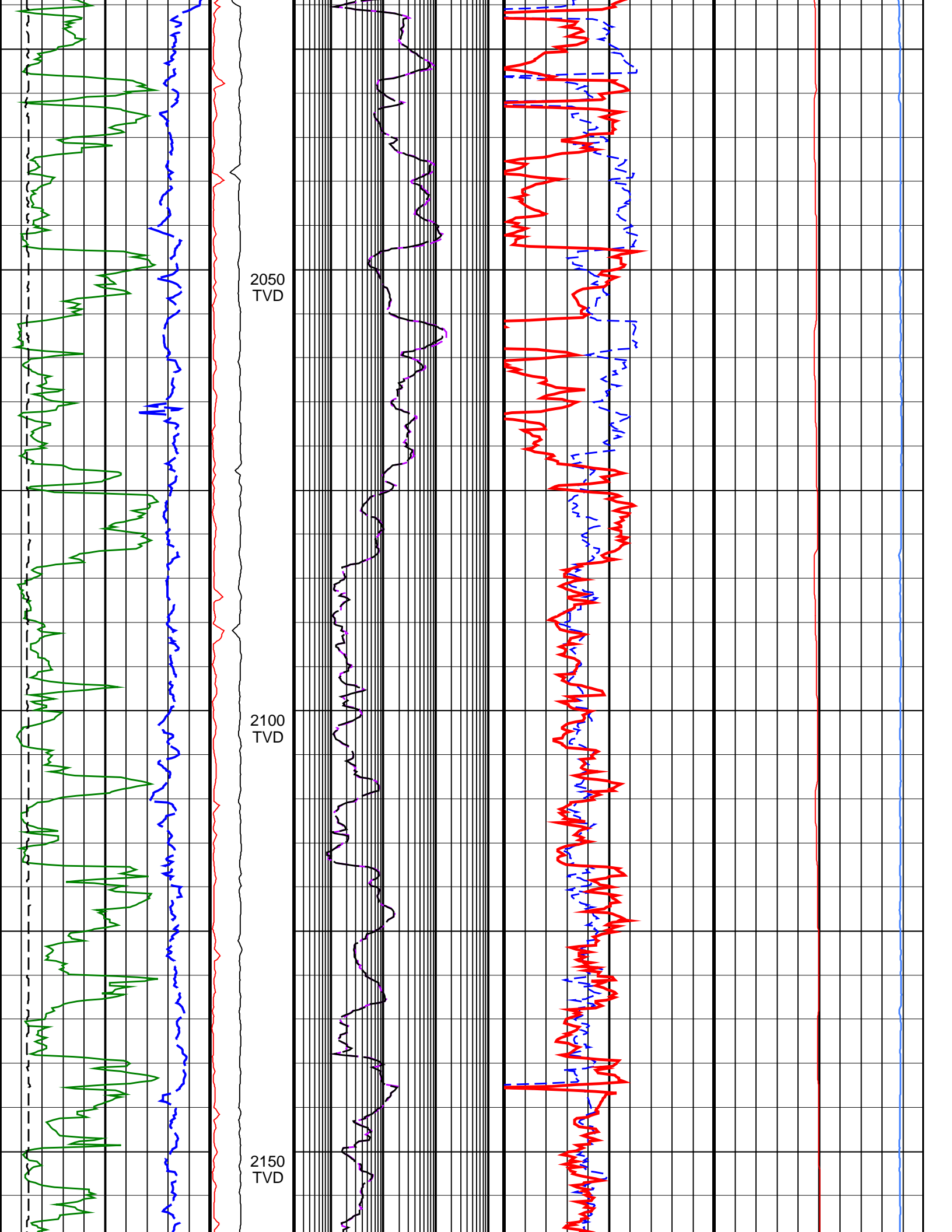


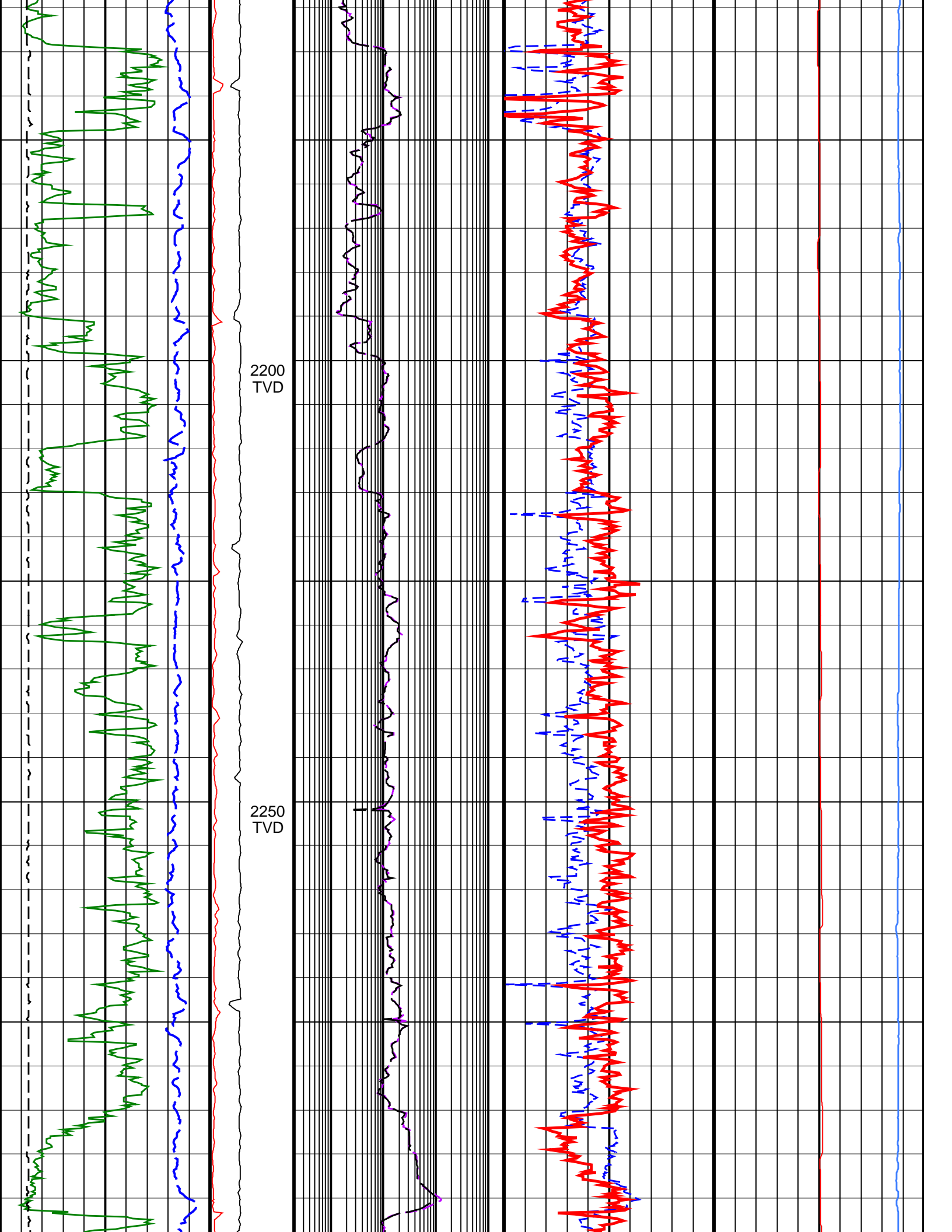
1750
TVD

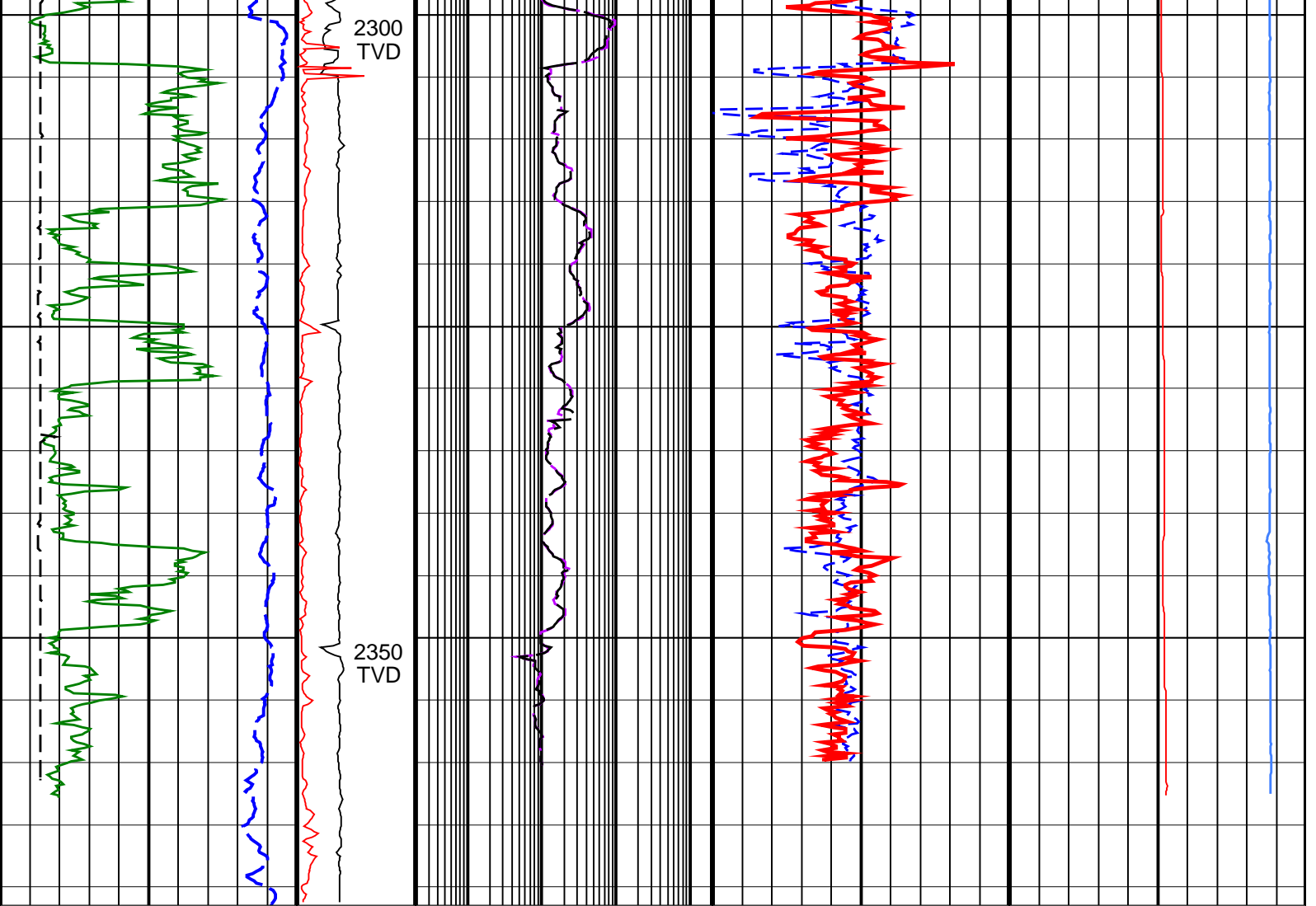
1800
TVD

1850
TVD









<p>ROP*5 (ROP5) (M/HR)</p> <p>0 200</p>	<p>PKPK_RPM (Stick_RT) (RPM)</p> <p>0 400</p>	<p>ARC Phase Shift Resistivity 28 inch at 2 MHz, Real-Time (P28H_ECO_RT) (OHMM)</p> <p>0.2 2000</p>	<p>Best Thermal Neutron Porosity, Average, Real-Time (BPHI_ECO_RT) (PU)</p> <p>45 -15</p>	<p>Downhole Annulus Temperature, Real Time, Computed Downhole (DHAT_ DH_ECO_RT) (DEGC)</p> <p>0 200</p>
<p>Gamma Ray, Average, Real-Time (GRMA_ECO_RT) (GAPI)</p> <p>0 200</p>	<p>MWD Collar RPM (CRPM_RT) (RPM)</p> <p>0 400</p>	<p>ARC Phase Shift Resistivity 40 inch at 2 MHz, Real-Time (P40H_ECO_RT) (OHMM)</p> <p>0.2 2000</p>	<p>Bulk Density from Neutron, Average, Real-Time (RHON_ ECO_RT) (G/C3)</p> <p>1.85 2.85</p>	<p>Equivalent Circulating Density, Real-Time (ECD_ ECO_RT) (LB/G)</p> <p>0 14</p>
<p>Ultrasonic Caliper, Average Diameter, Real-Time, Computed Downhole (UCAV_ DH_ECO_RT) (IN)</p> <p>8 20</p>				

IDEAL Version: ID14_0C_02
IDF