

Madfish-1 VISION Service 200MD RM

RAB id13_0c_02

Format: GeoV_Ser_200MD Vertical Scale: 1:200

Graphics File Created: 11-Dec-2008 12:27

PIP SUMMARY

Density Ticks, 0.1-ft

Neutron Ticks, 0.1 ft

+ Ring Samples
 † Gamma Ray Samples

Ring Resistivity Time After Bit (TAB_
RAB_RING)
 0 (HR) 10

Rate of Penetration, Averaged over Last
5ft (ROP5_RM)
 200 (M/HR) 0

Vertical Hole
Diameter (VERD)
 6 (IN) 16

Horizontal Hole
Diameter (HORD)
 6 (IN) 16

RAB Gamma Ray (GR_RAB)
 0 (GAPI) 200

Density Time After Bit (TAB_DEN)
 0 (HR) 10

Shallow Button Resistivity (RES_BS)
 0.2 (OHMM) 2000

Medium Button Resistivity (RES_BM)
 0.2 (OHMM) 2000

Deep Button Resistivity (RES_BD)
 0.2 (OHMM) 2000

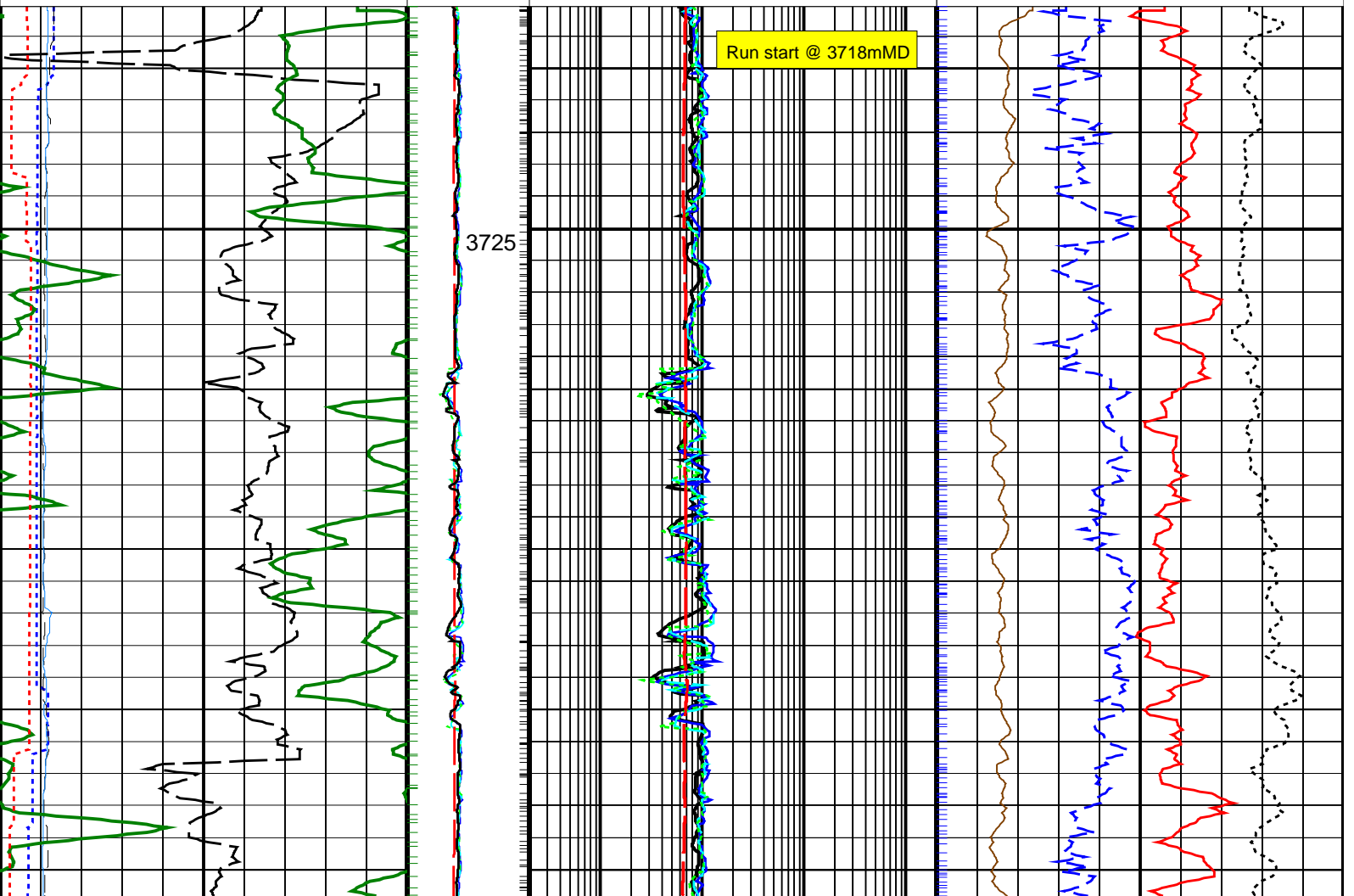
Photoelectric Factor, Bottom (PEB) 0 (----) 10	Bulk Density Correction, Bottom (DRHB) -0.25 (G/C3) 0.25
--	--

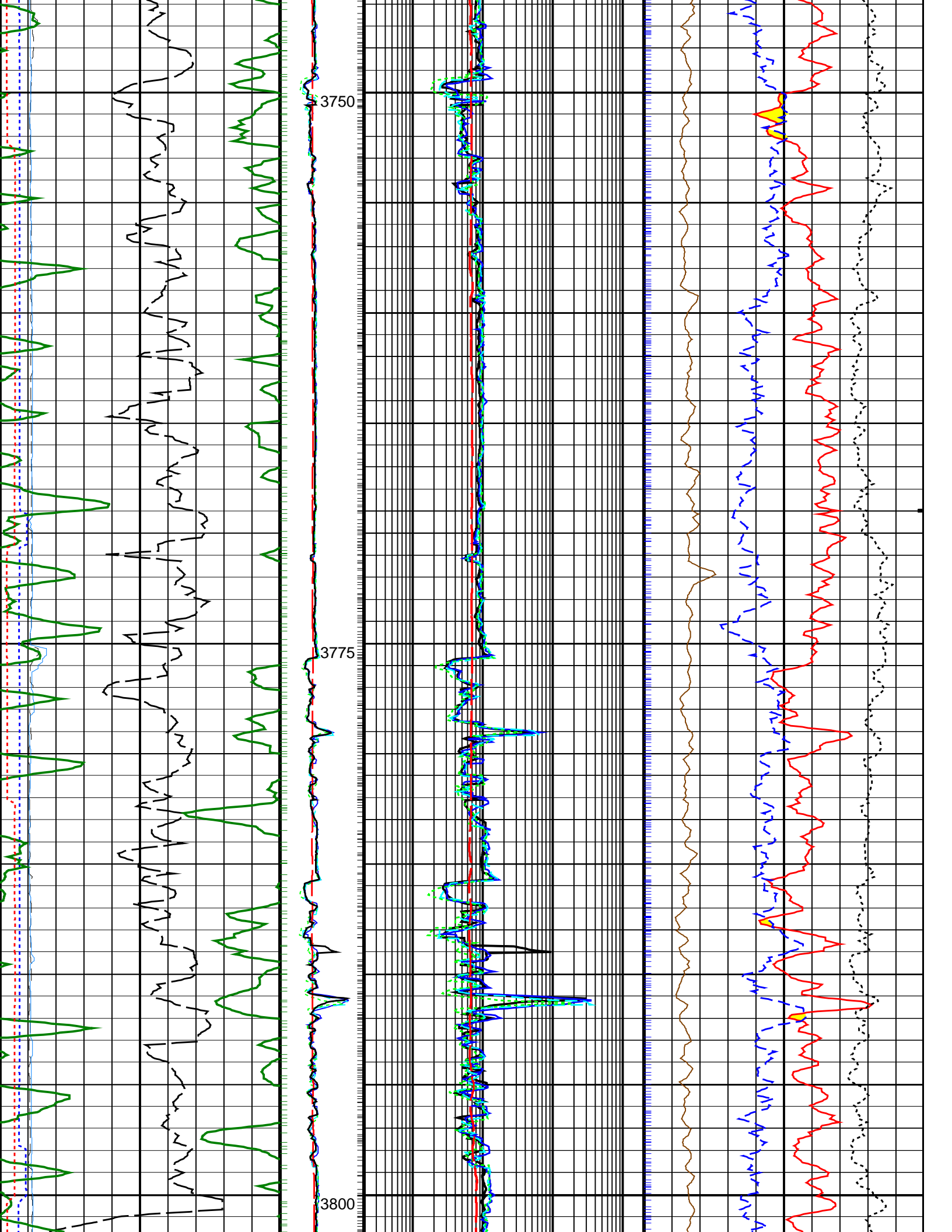
Bit Resistivity (RES_BIT)
 0.2 (OHMM) 2000

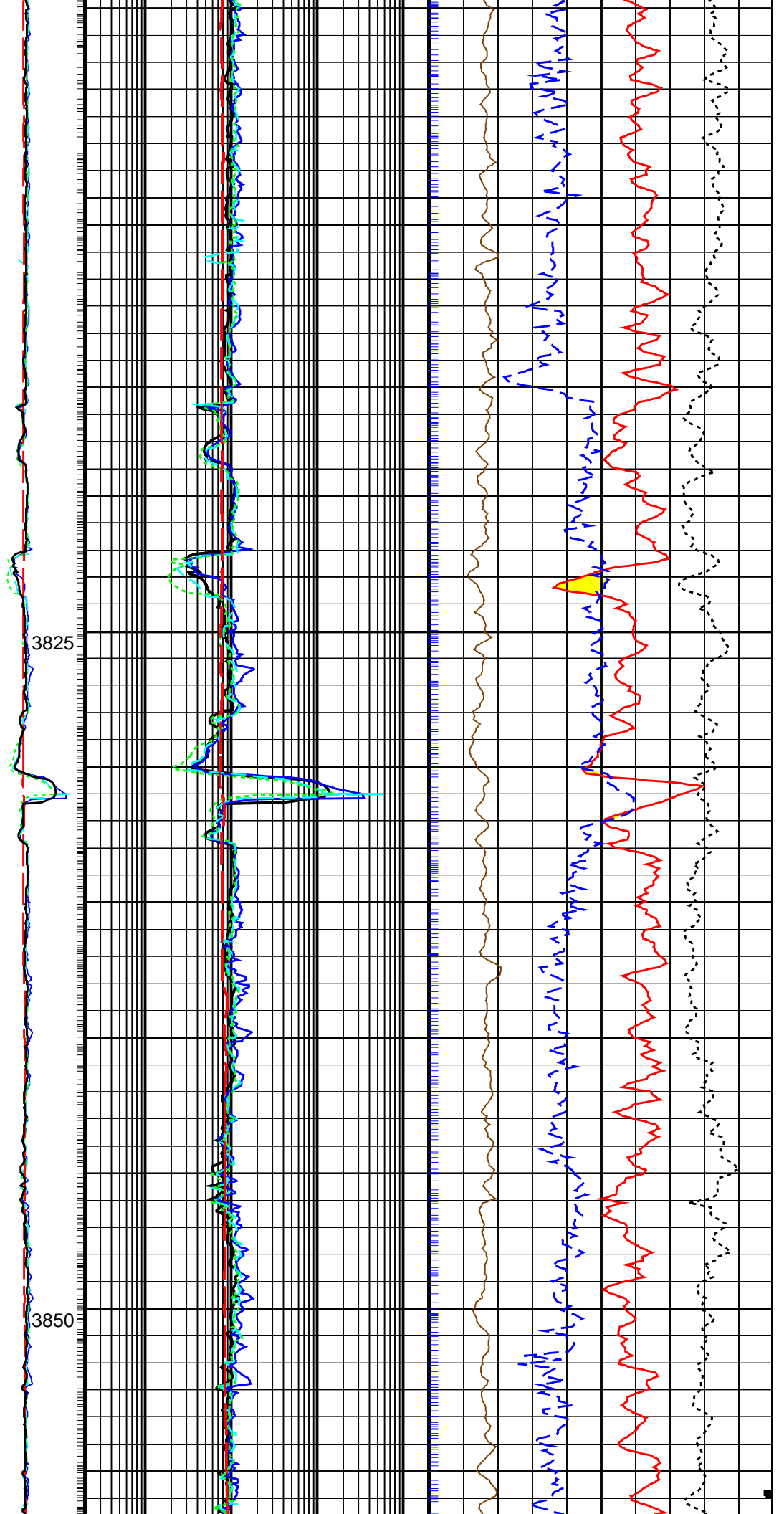
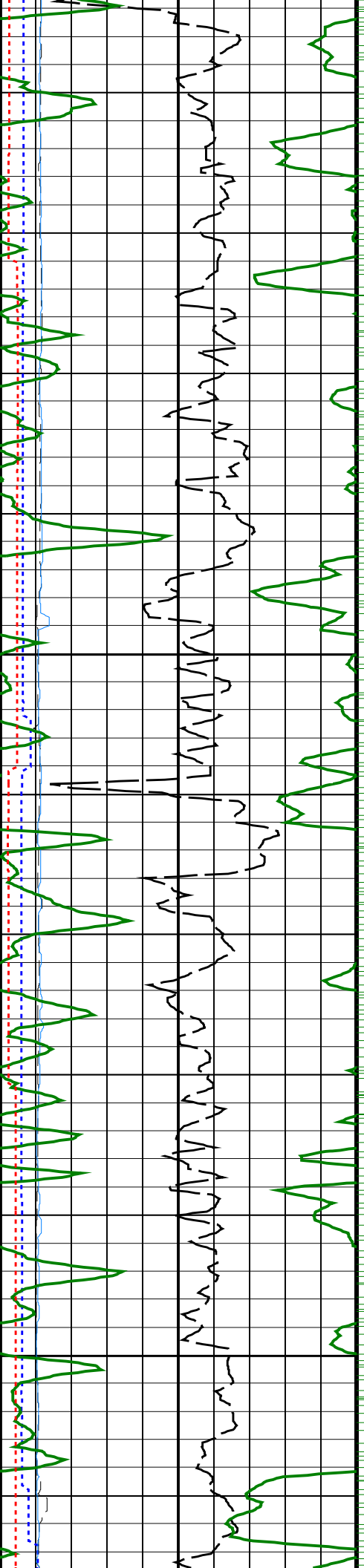
Thermal Neutron Porosity (TNPH)
 45 (PU) -15

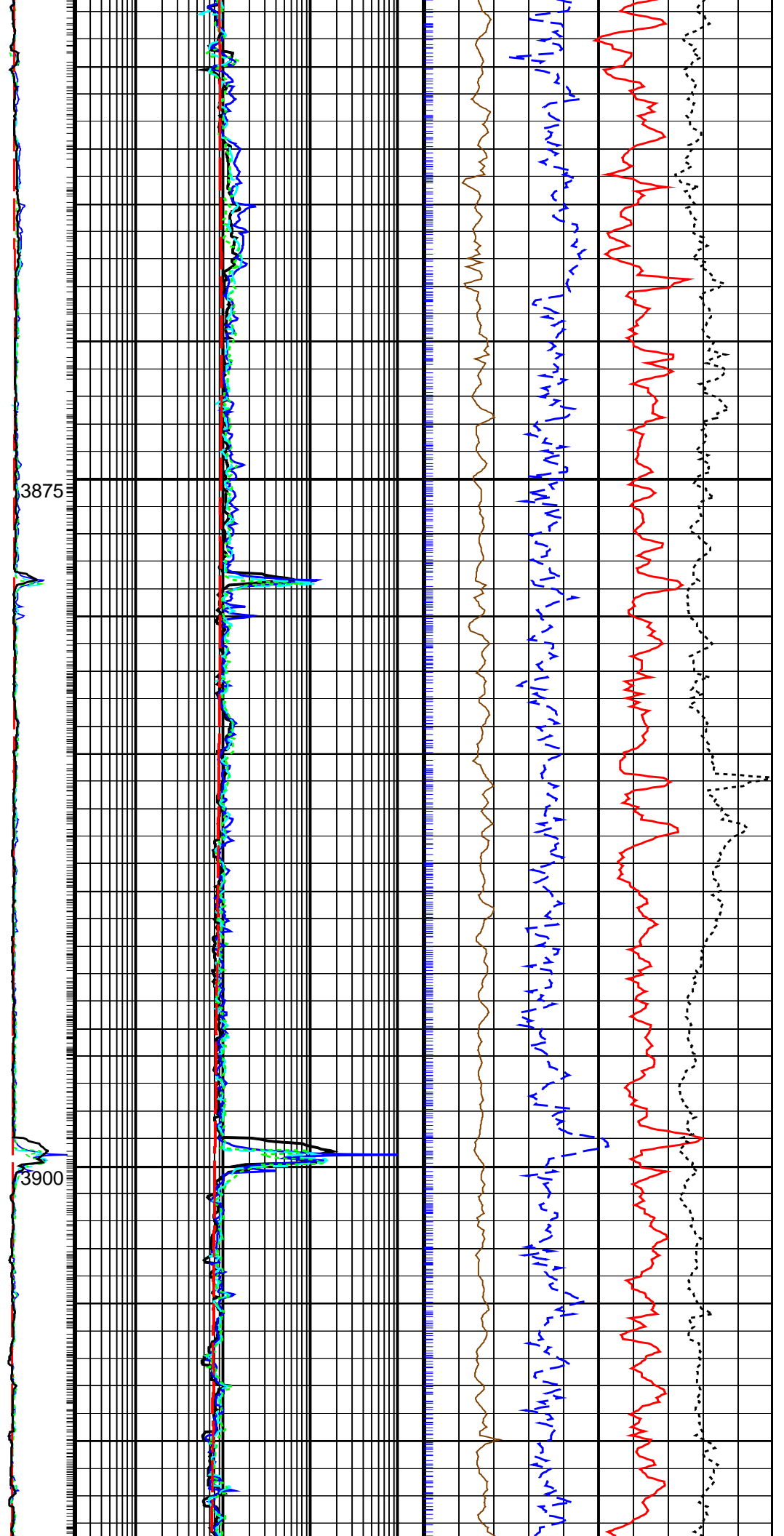
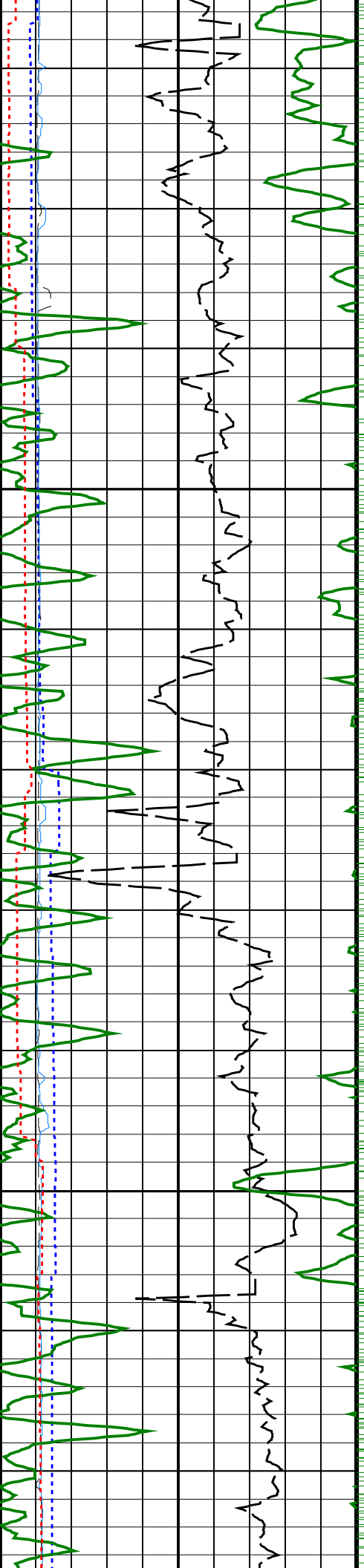
Ring Resistivity (RES_RING)
 0.2 (OHMM) 2000

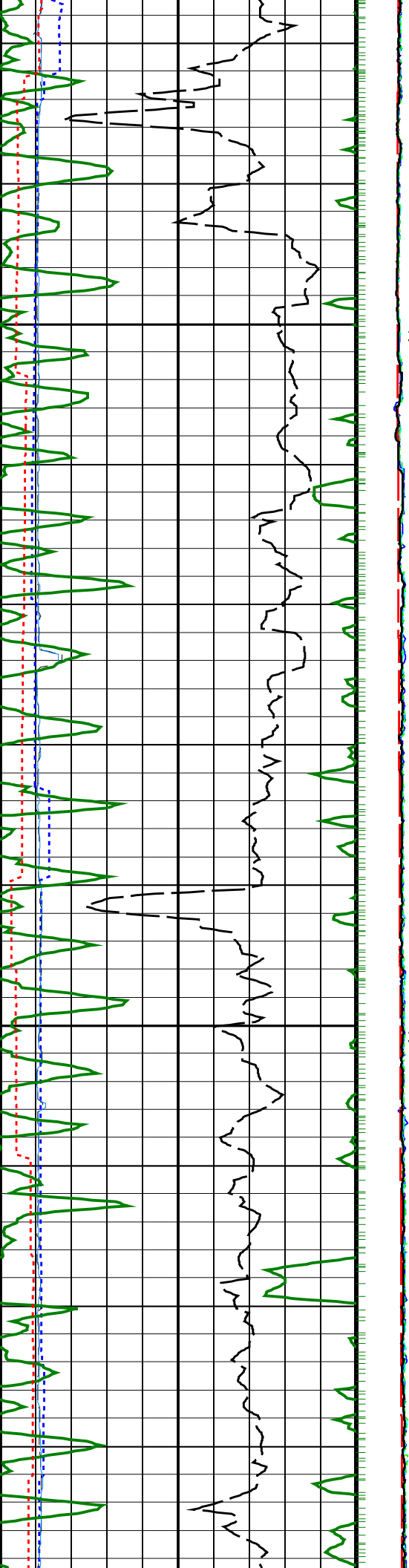
Bulk Density, Bottom (ROBB)
 1.95 (G/C3) 2.95





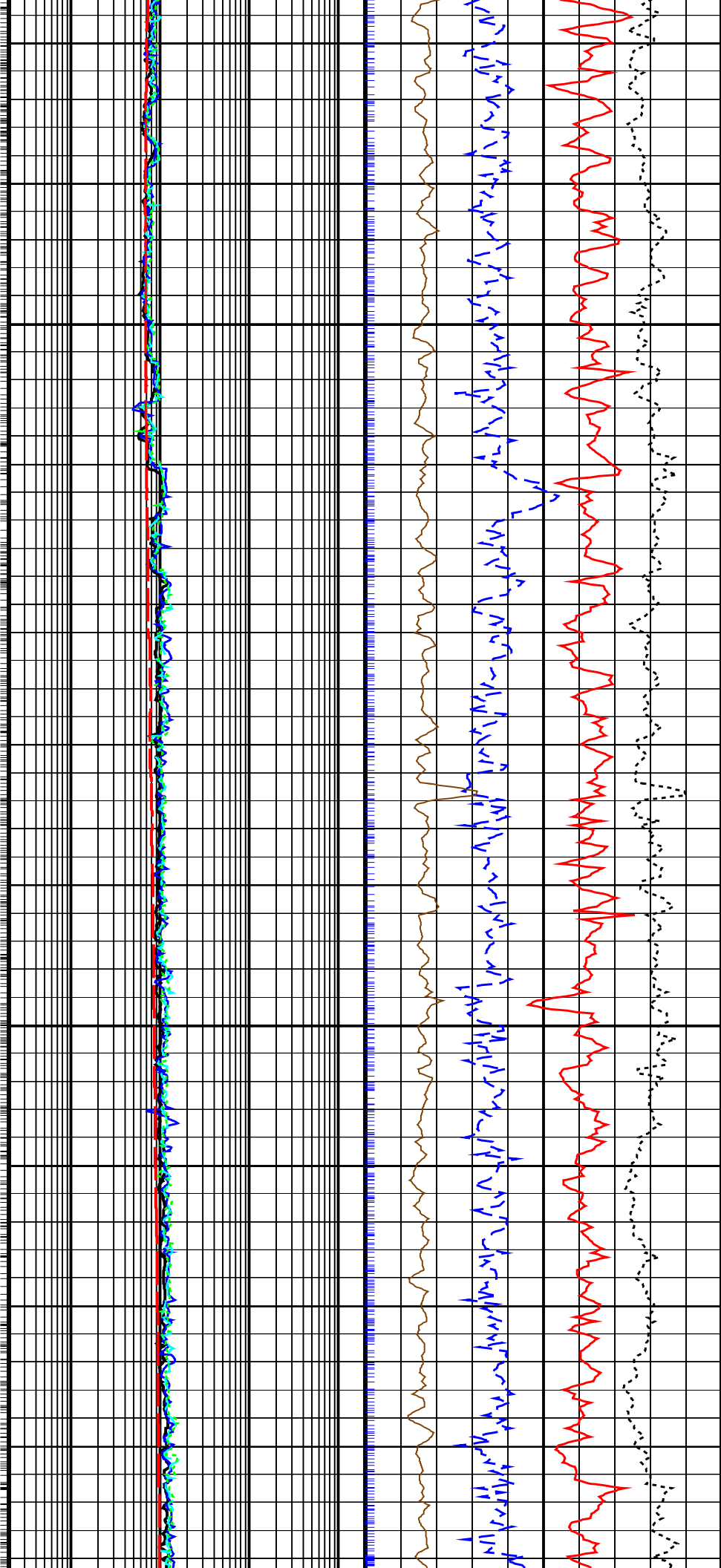


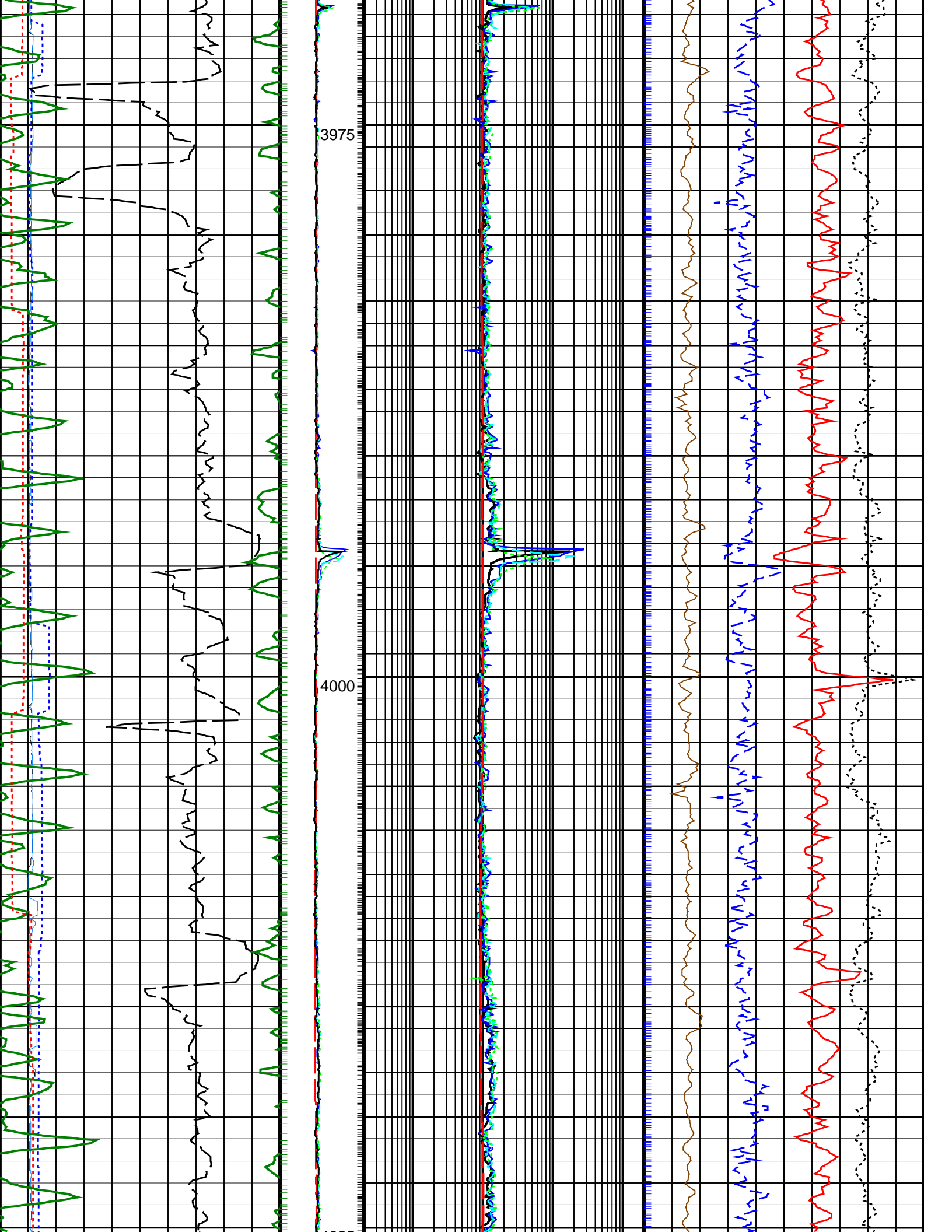


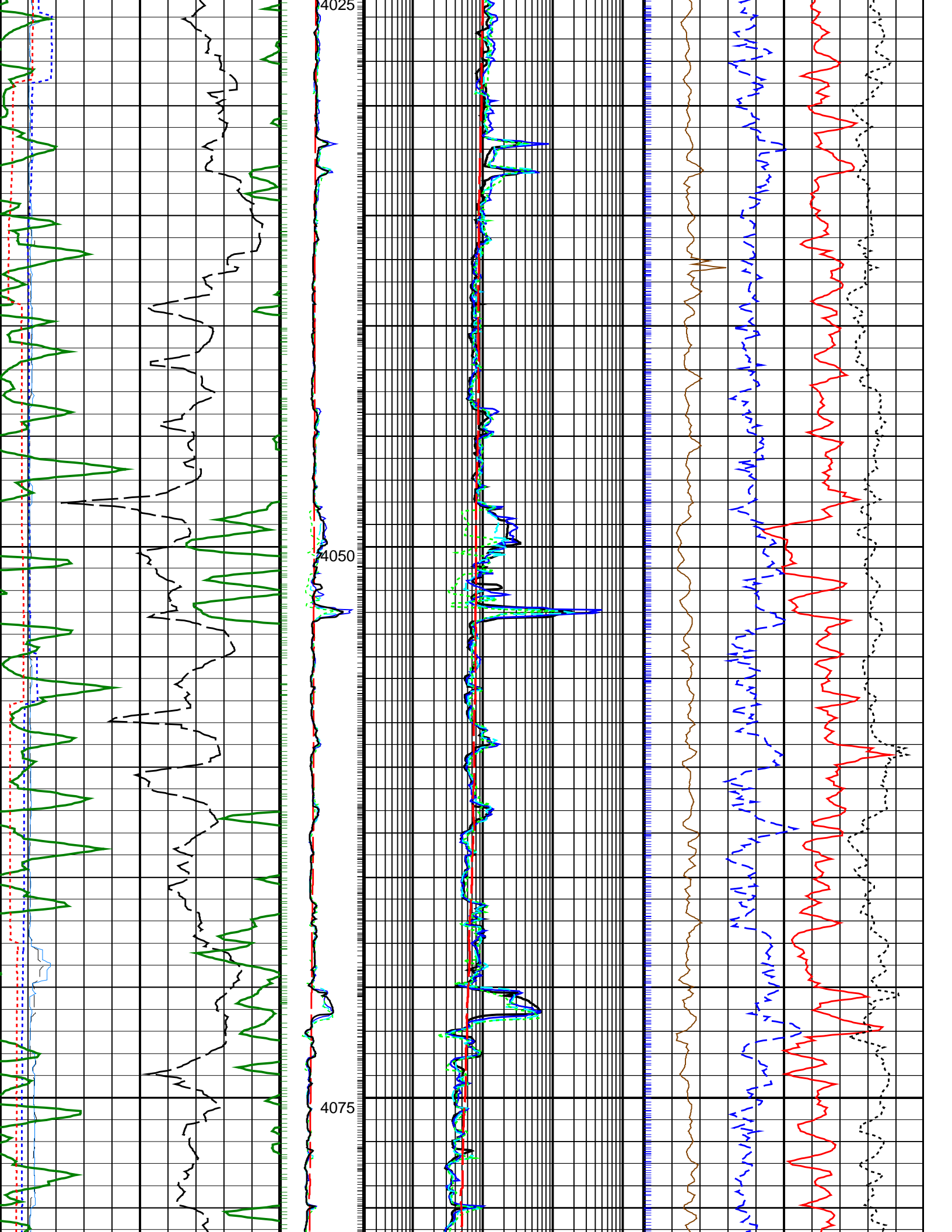


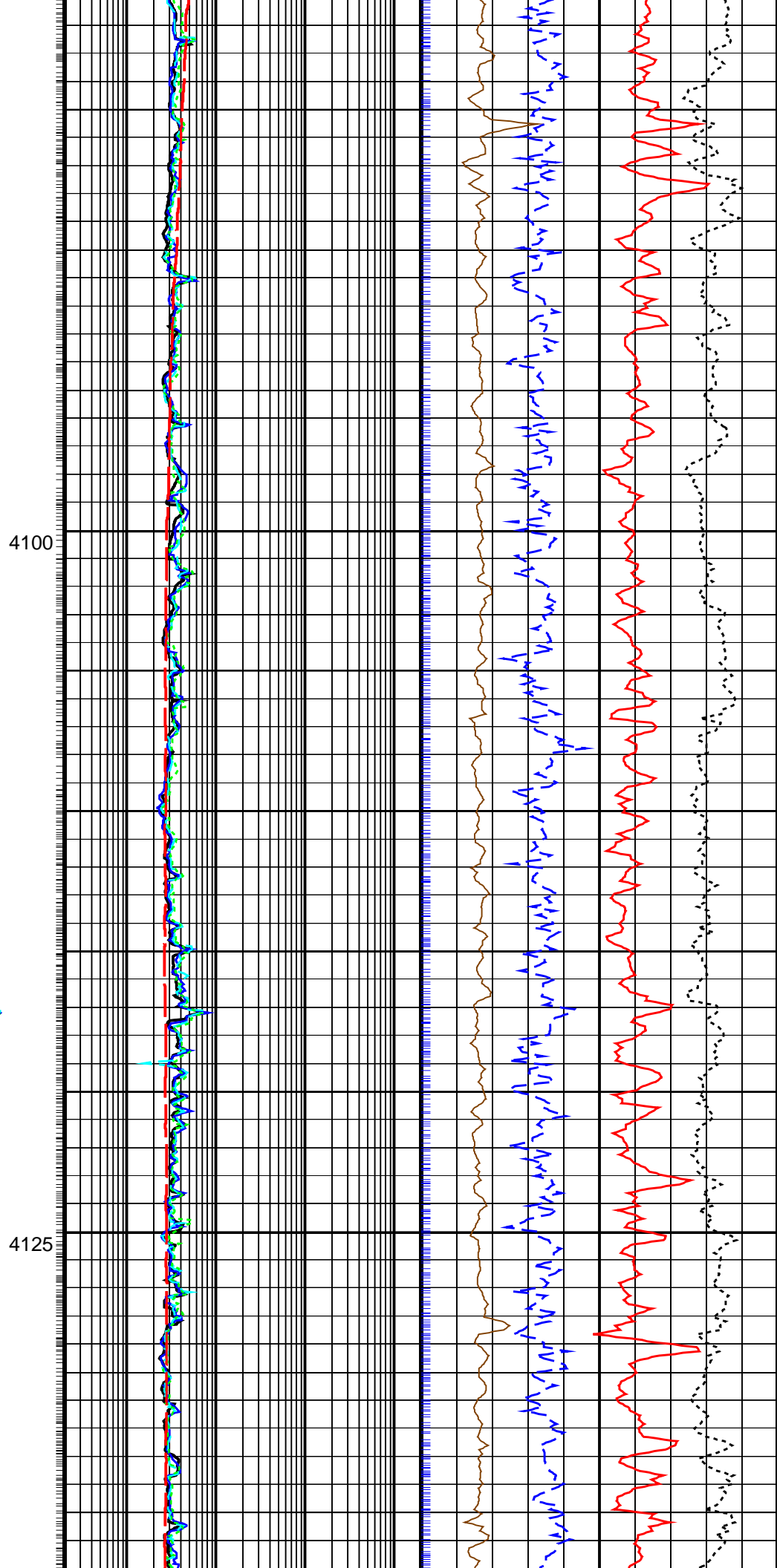
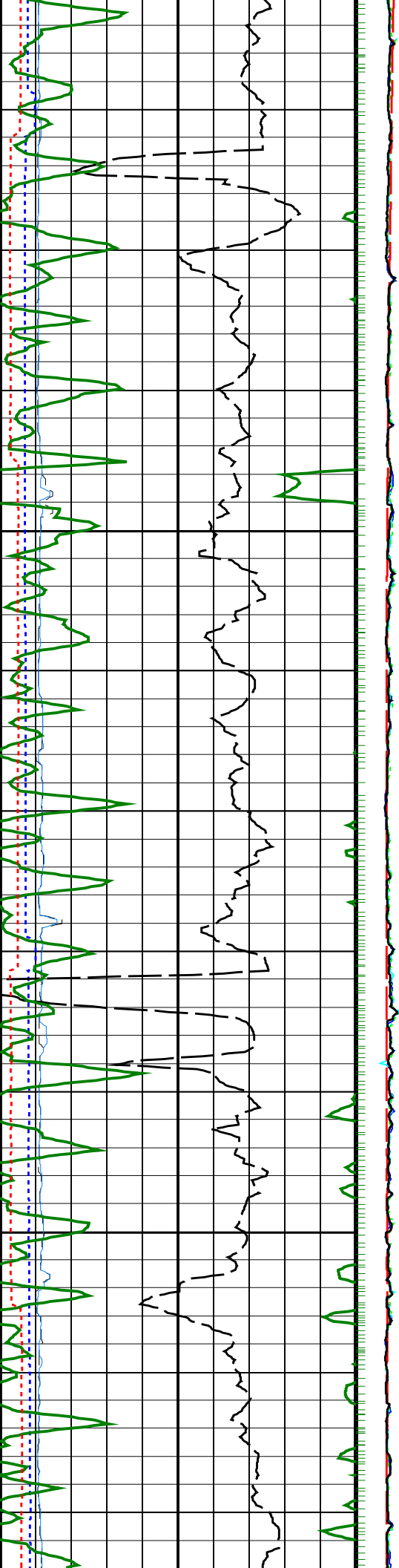
3925

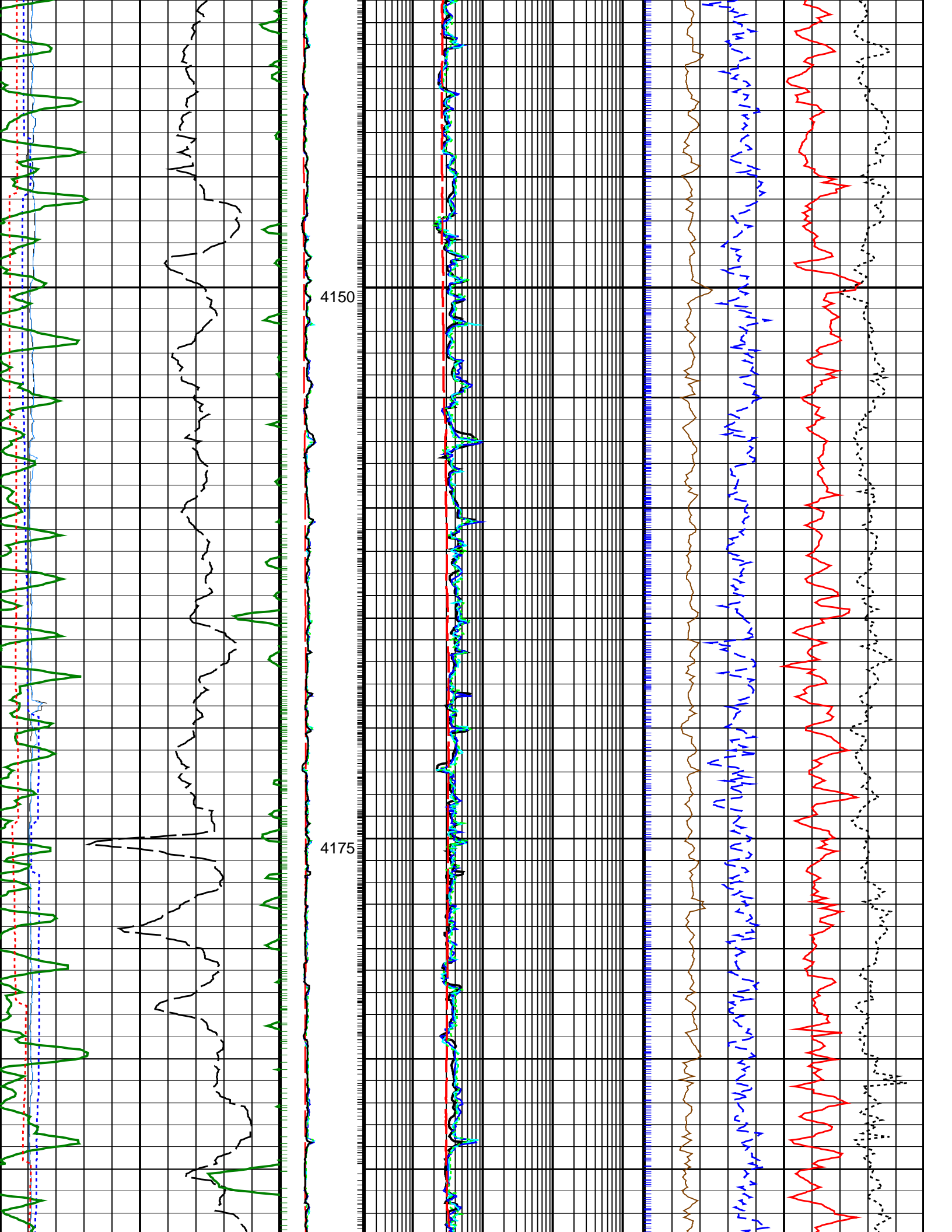
3950

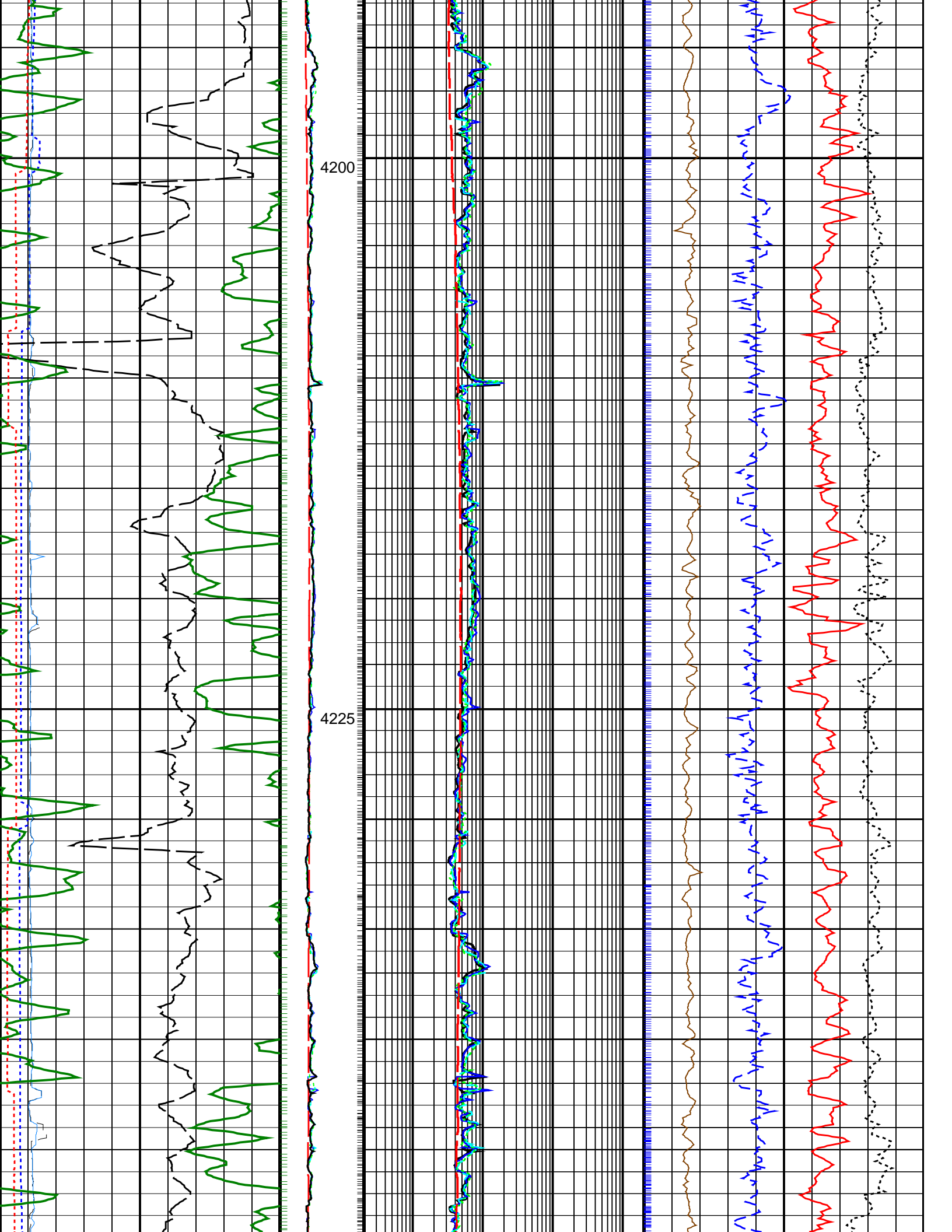


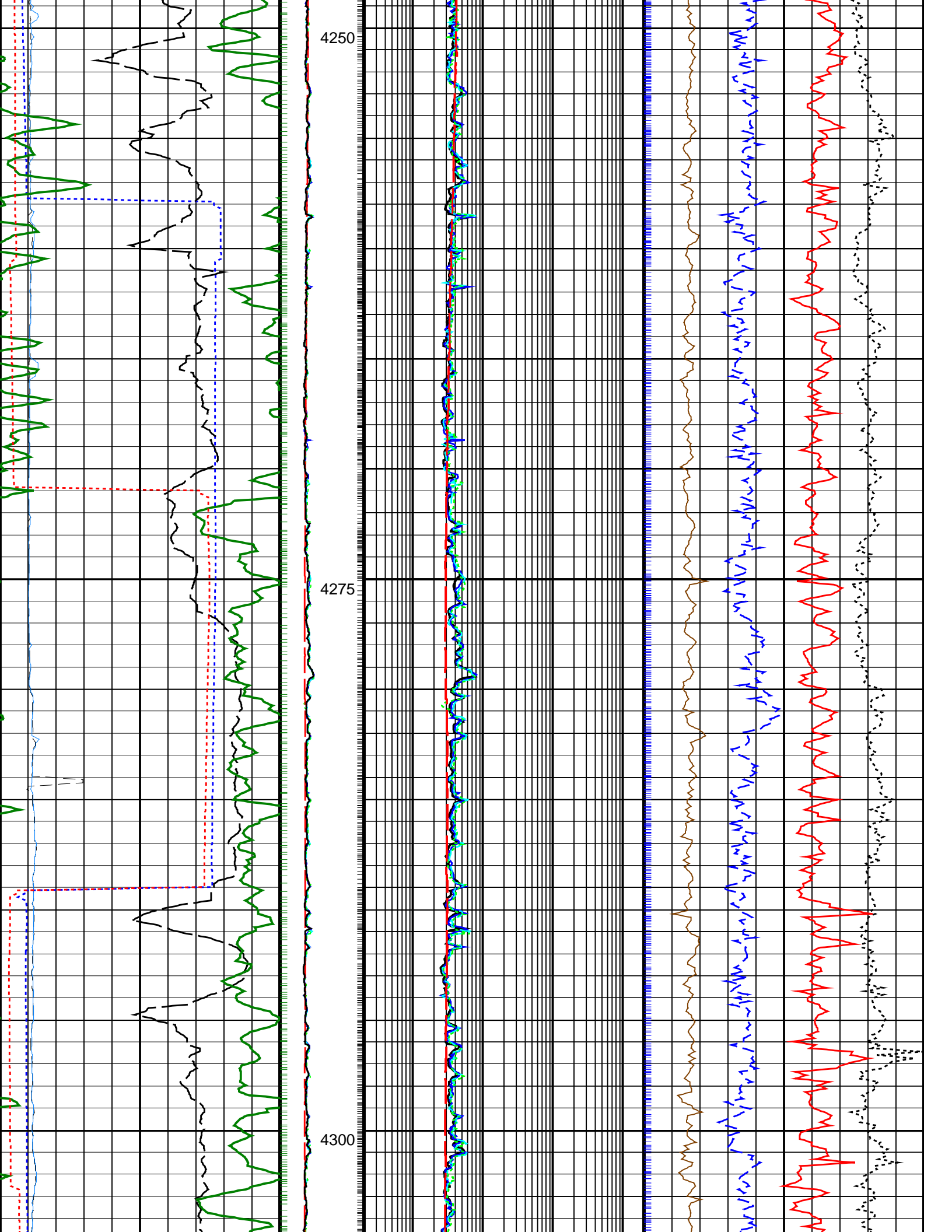


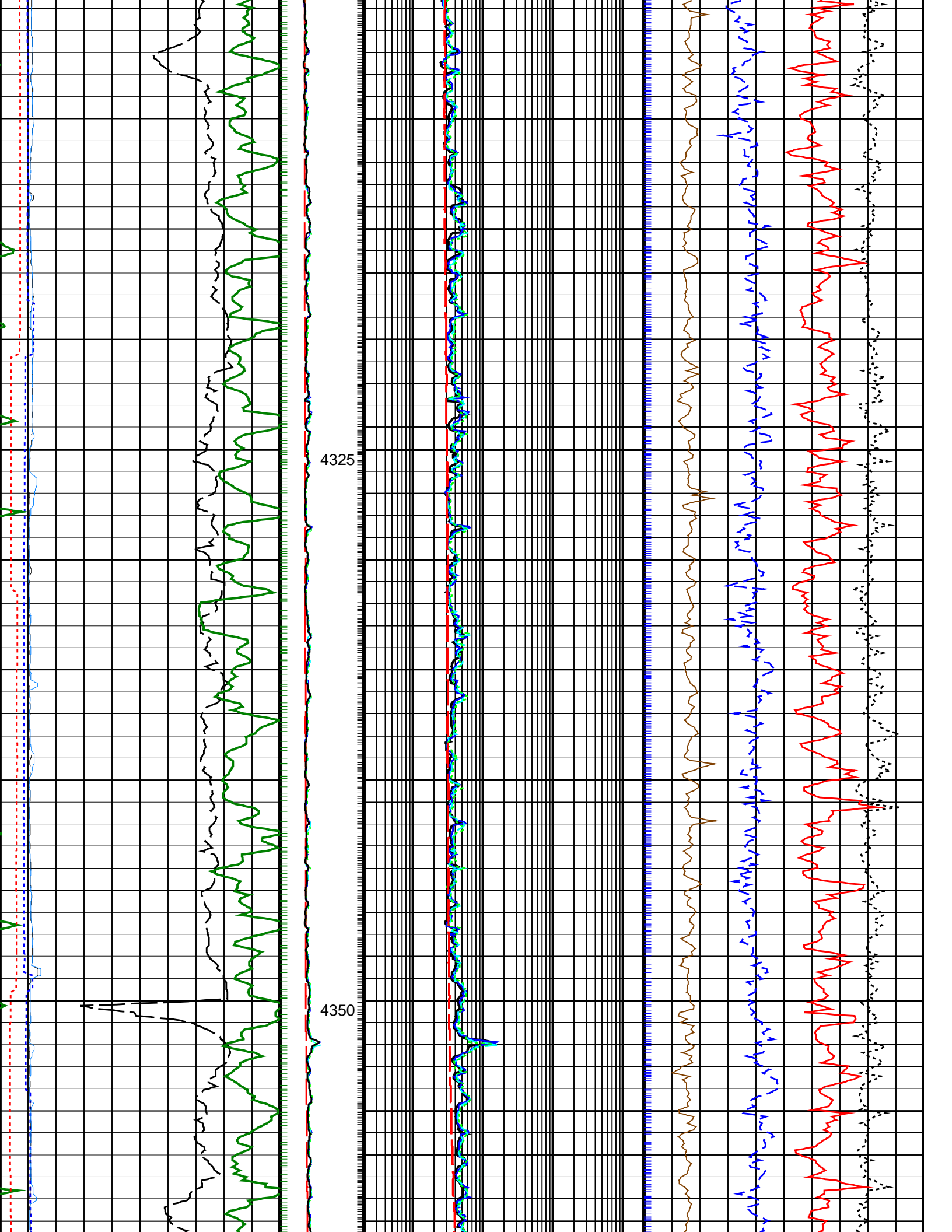


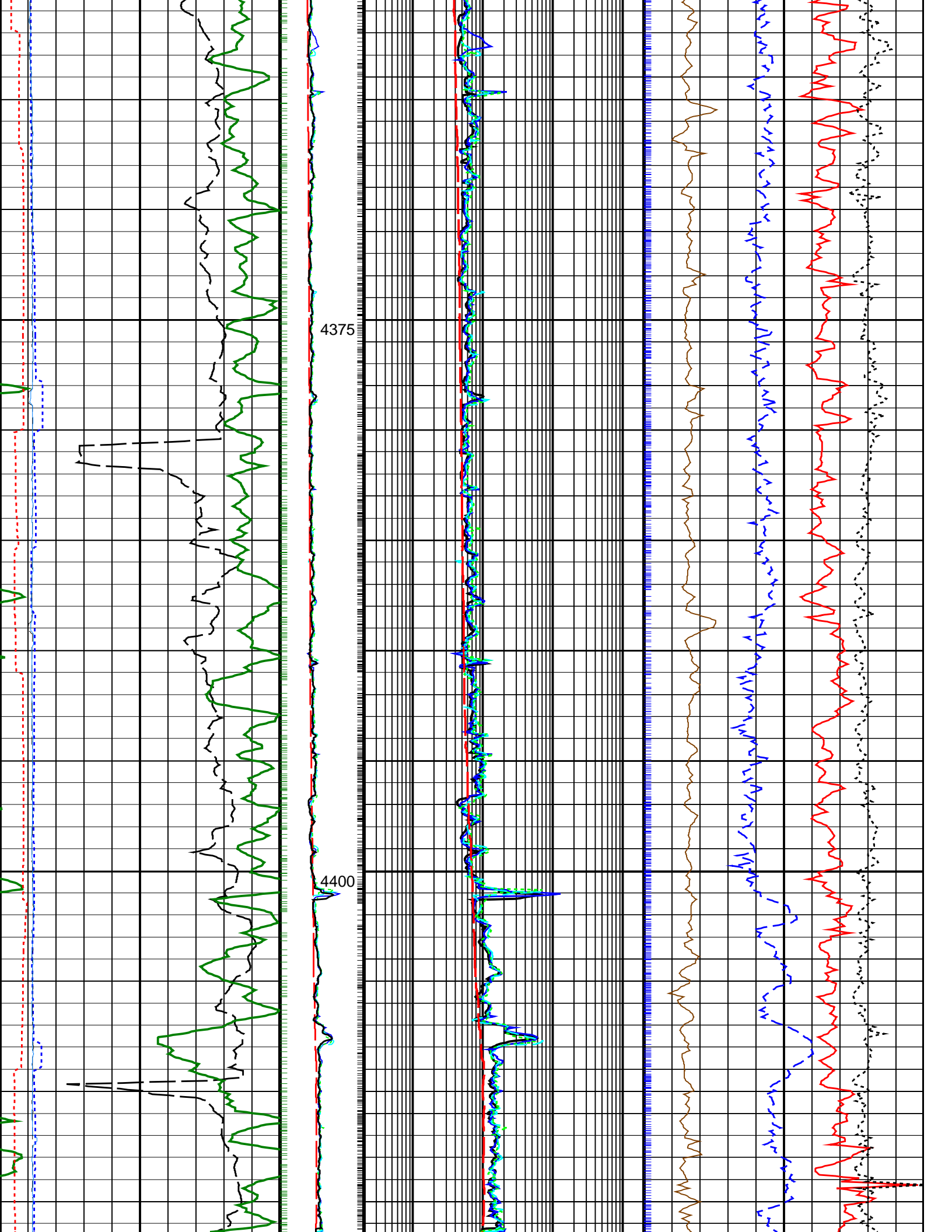


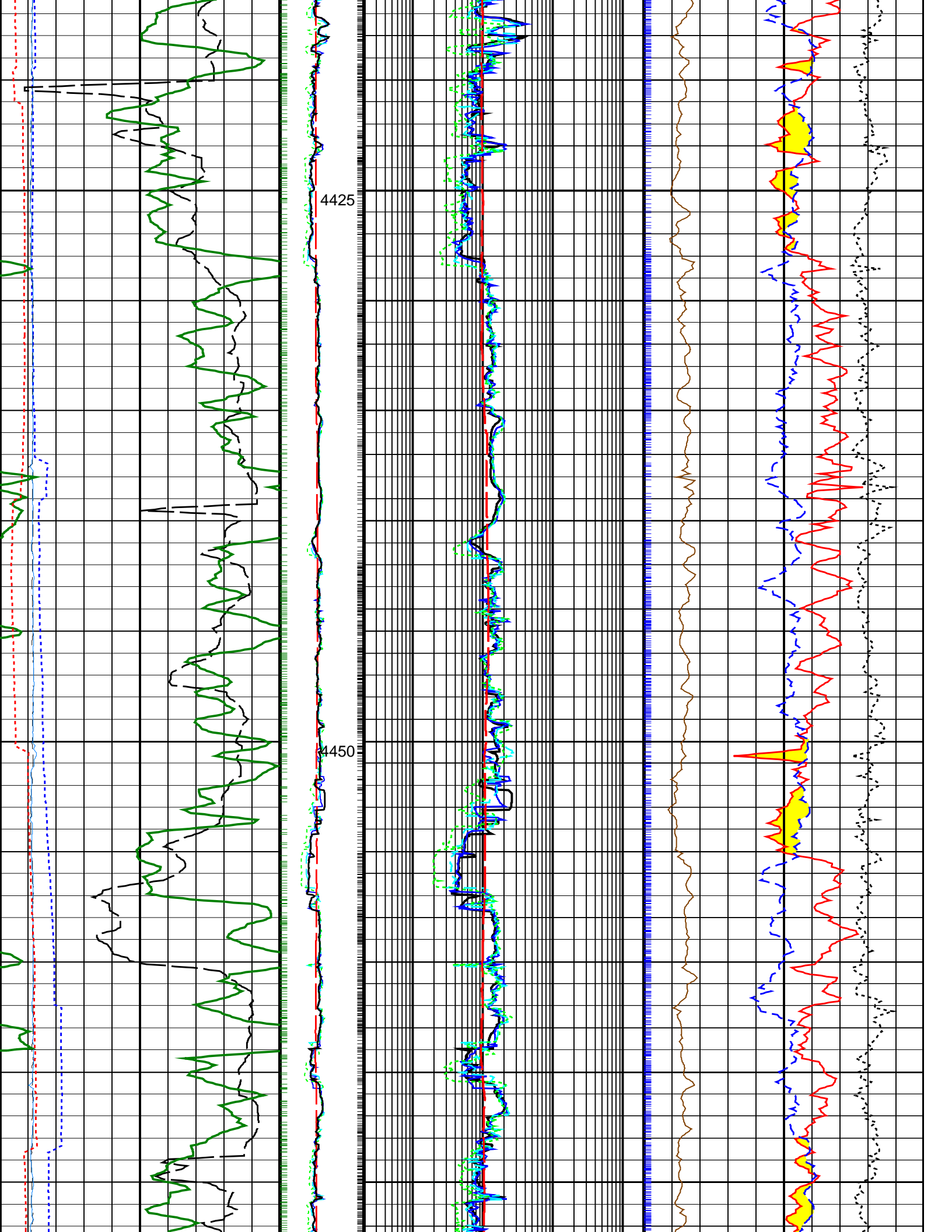


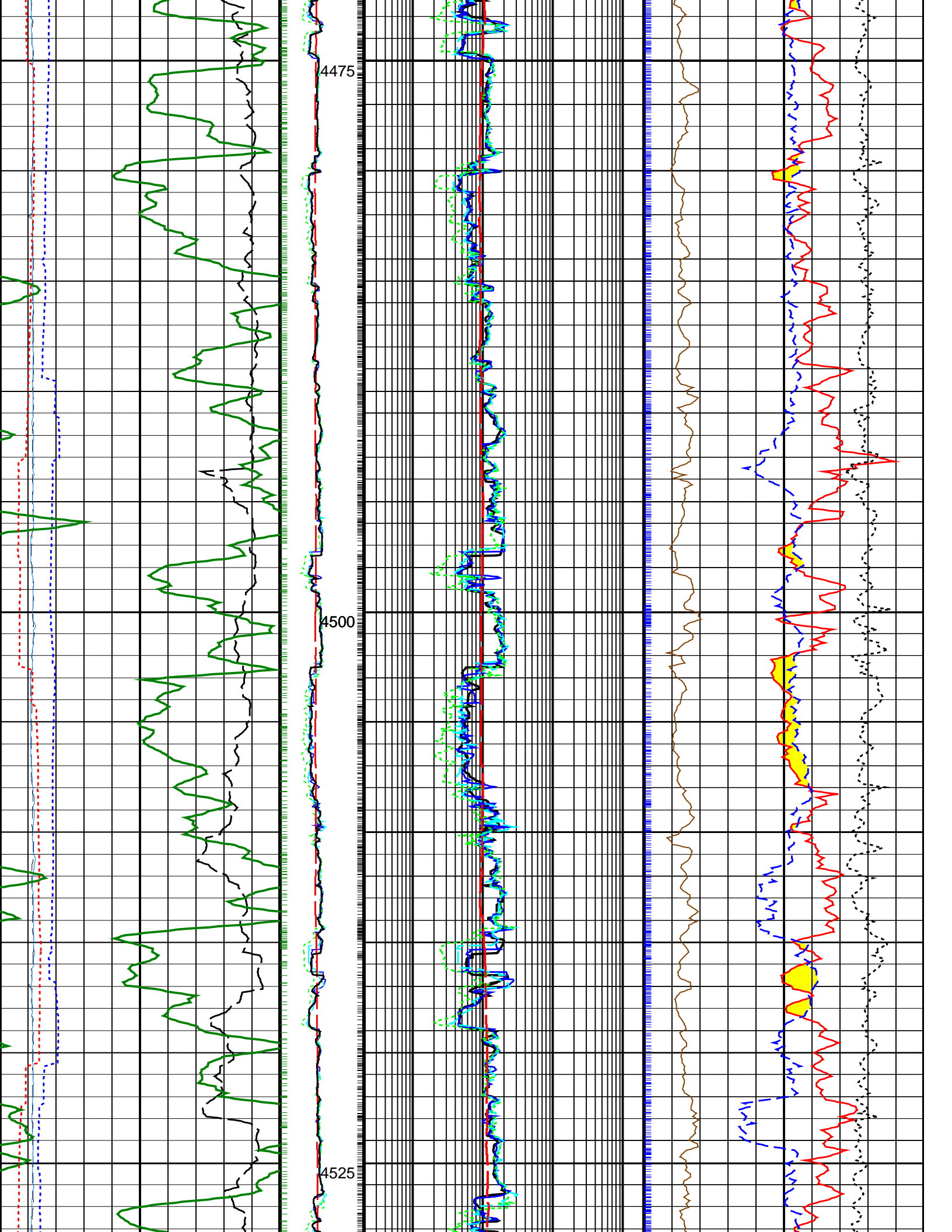


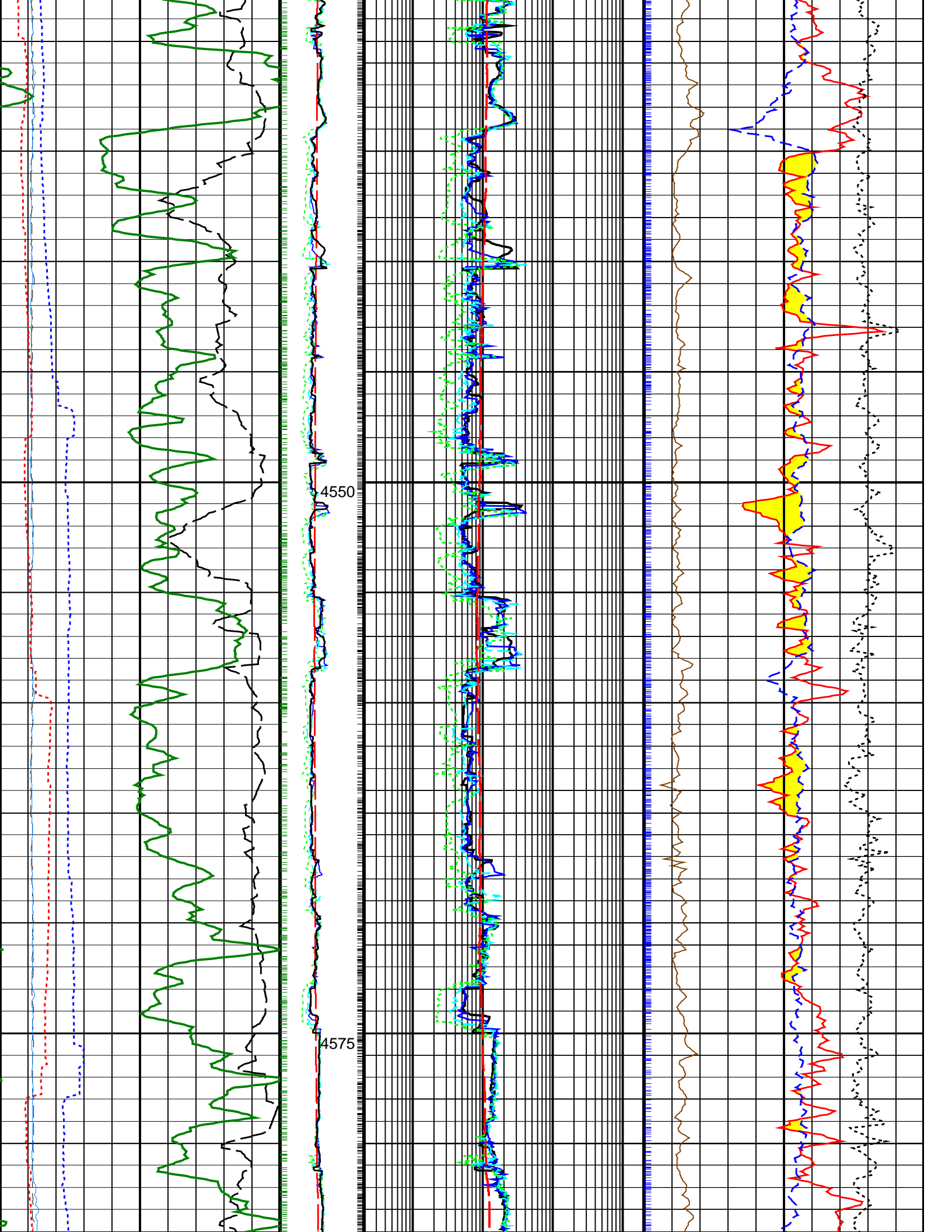


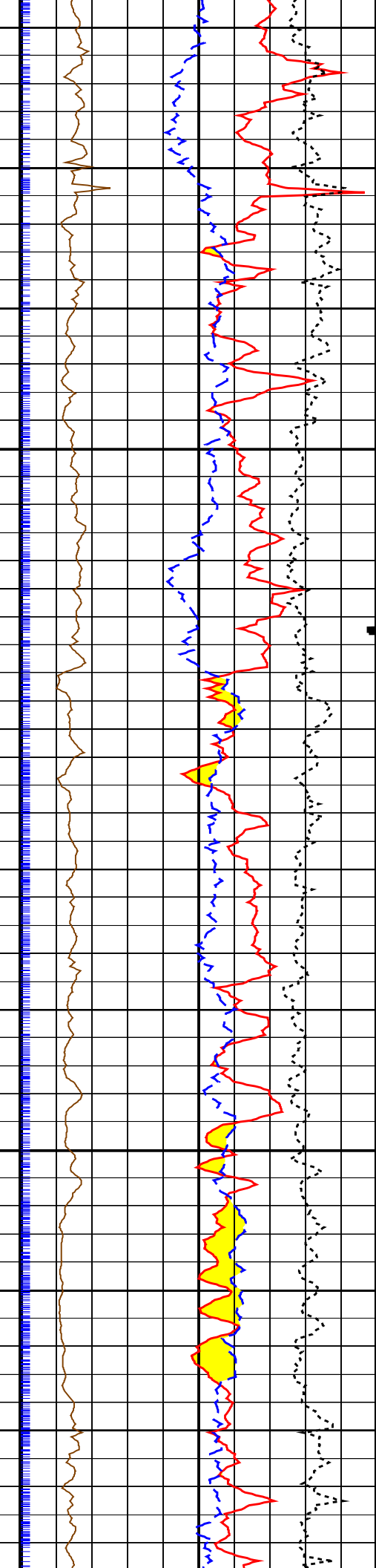
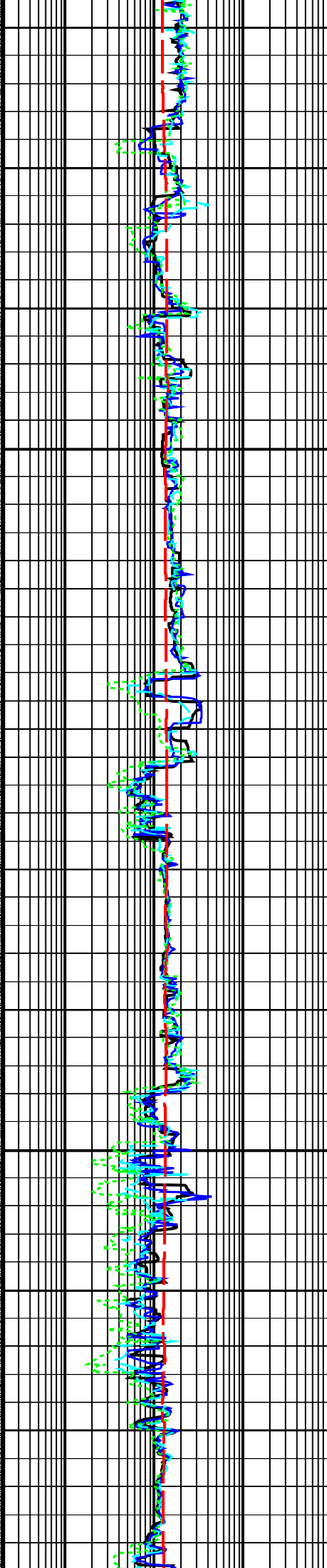
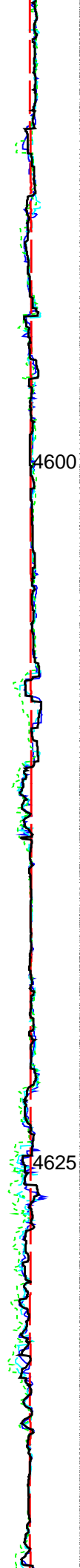
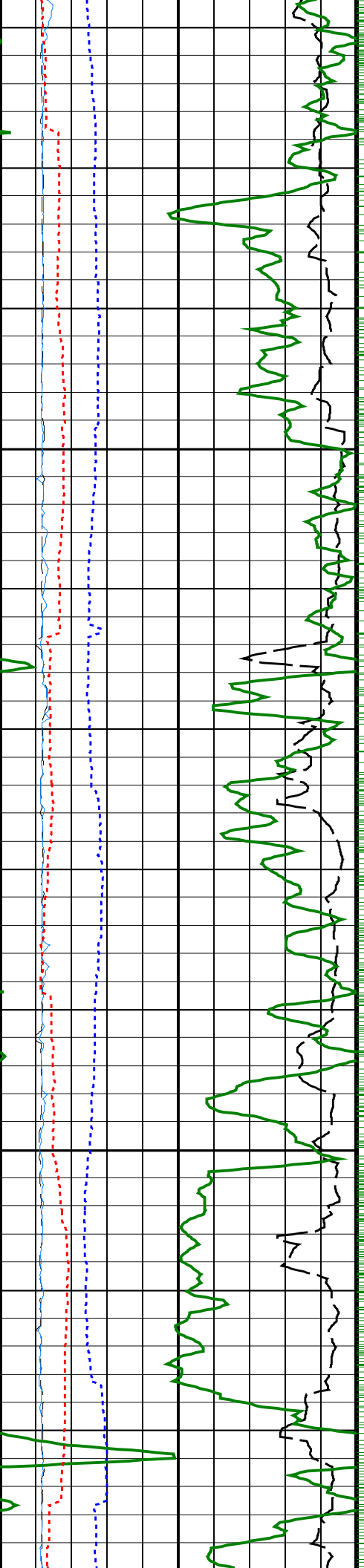






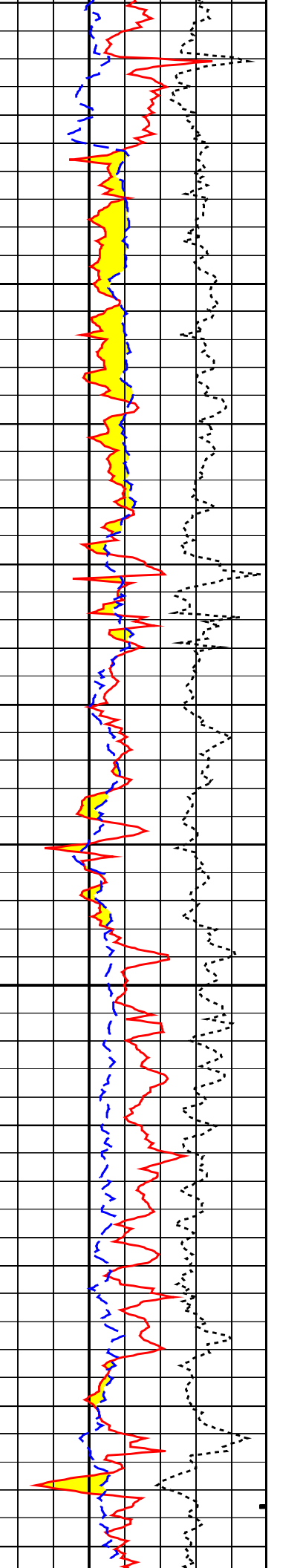
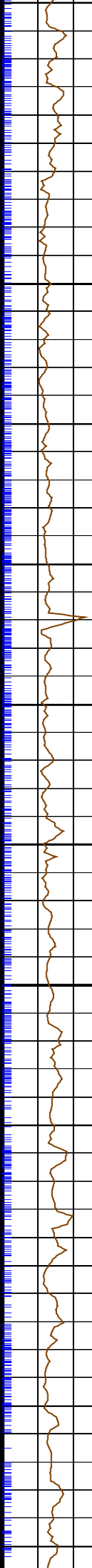
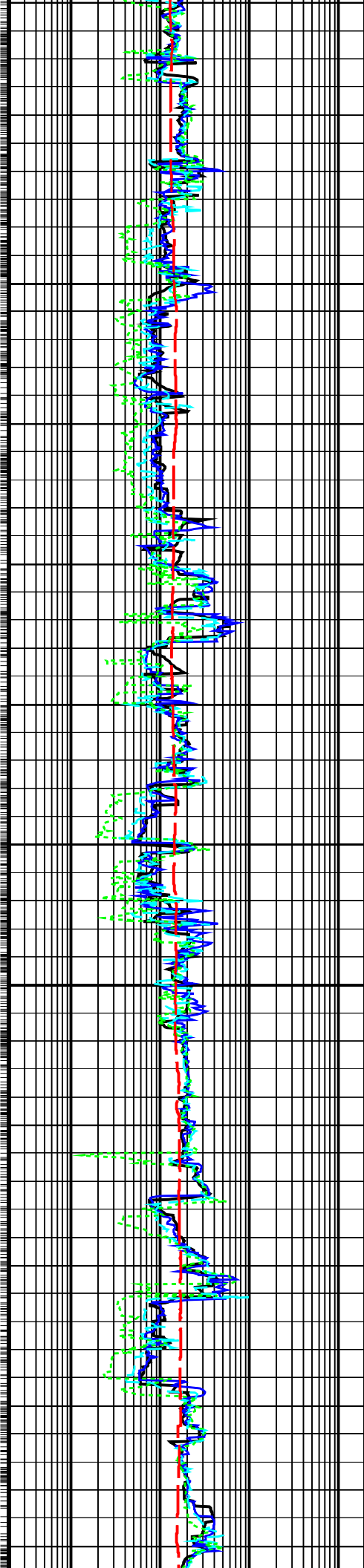
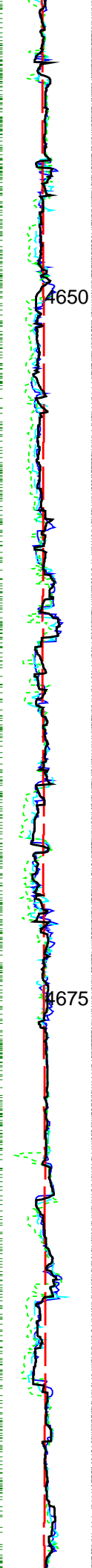
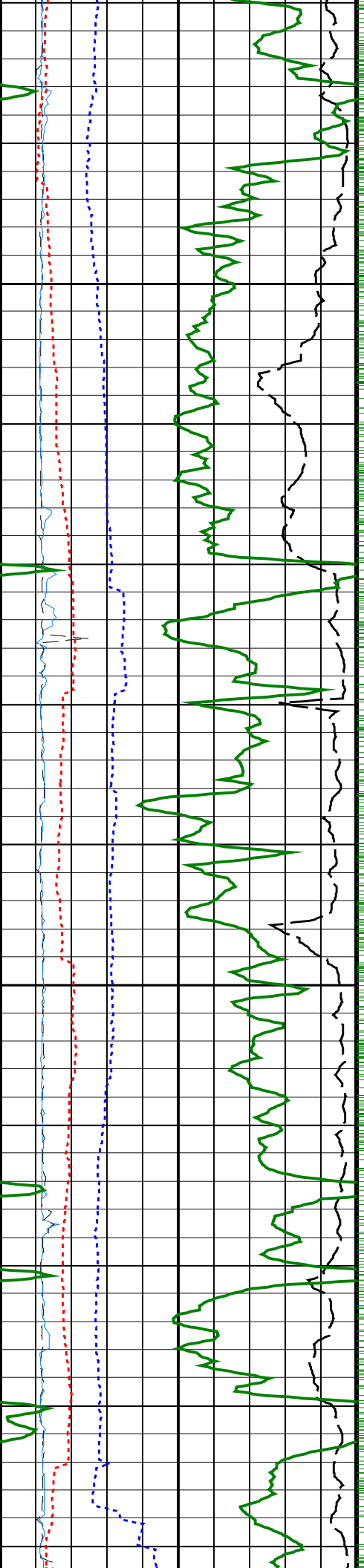






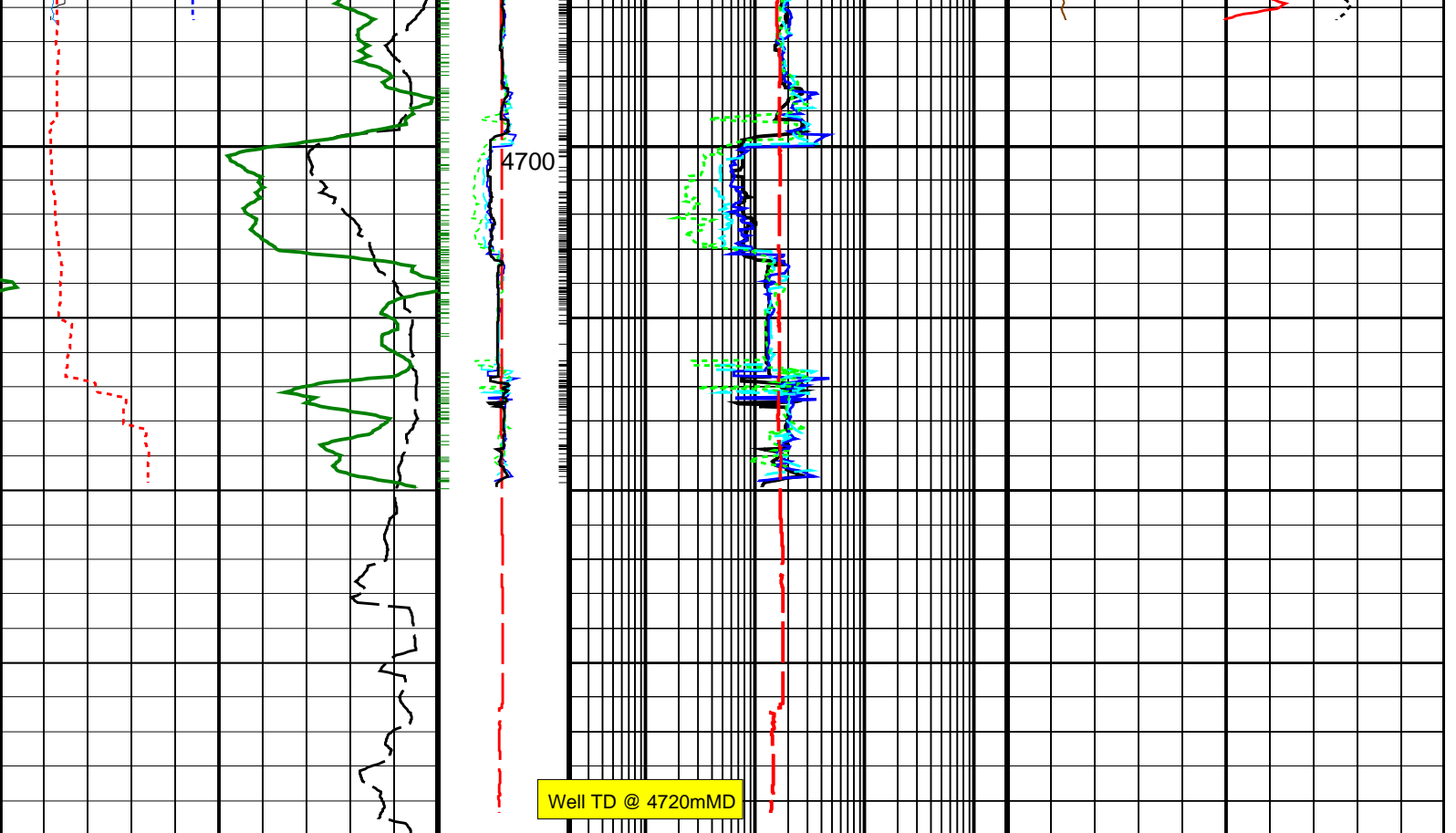
4600

4625



4650

4675



Density Time After Bit (TAB_DEN)	
0	10
(HR)	
RAB Gamma Ray (GR_RAB)	
0	200
(GAPI)	

Horizontal Hole Diameter (HORD)	
6	16
(IN)	
Vertical Hole Diameter (VERD)	
6	16
(IN)	

Rate of Penetration, Averaged over Last 5ft (ROP5_RM)	
200	0
(M/HR)	
Ring Resistivity Time After Bit (TAB_RAB_RING)	
0	10
(HR)	

Ring Resistivity (RES_RING)	
0.2	2000
(OHMM)	
Bit Resistivity (RES_BIT)	
0.2	2000
(OHMM)	
Deep Button Resistivity (RES_BD)	
0.2	2000
(OHMM)	
Medium Button Resistivity (RES_BM)	
0.2	2000
(OHMM)	
Shallow Button Resistivity (RES_BS)	
0.2	2000
(OHMM)	

Bulk Density, Bottom (ROBB)	
1.95	2.95
(G/C3)	
Thermal Neutron Porosity (TNPH)	
45	-15
(PU)	
Photoelectric Factor, Bottom (PEB)	Bulk Density Correction, Bottom (DRHB)
0	-0.25
(----- 10)	(G/C3) 0.25

PIP SUMMARY

Neutron Ticks, 0.1 ft |
 † Ring Samples
 † Gamma Ray Samples

Density Ticks, 0.1-ft

IDEAL Version: ID13_0C_08
 IDF