

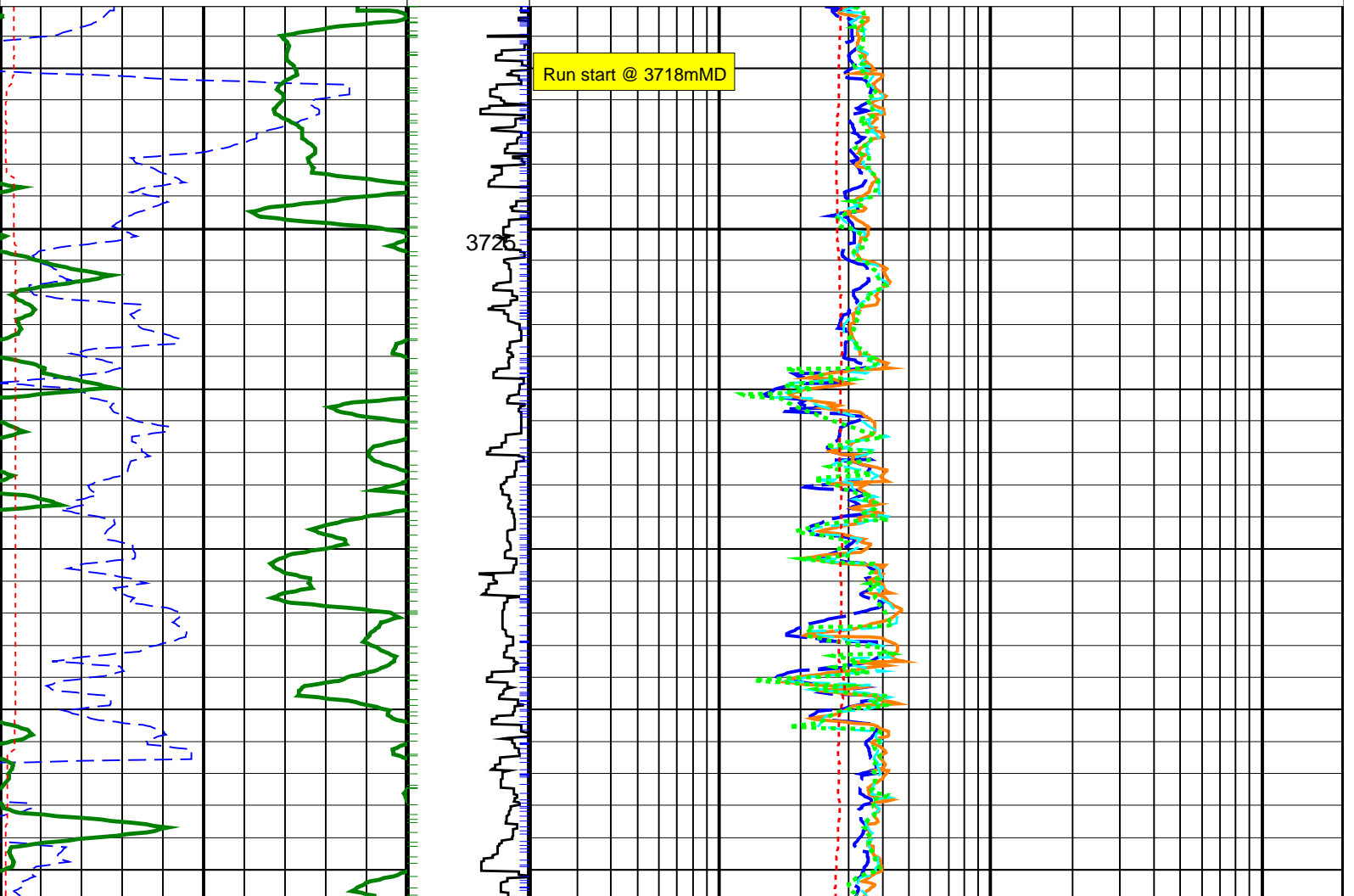
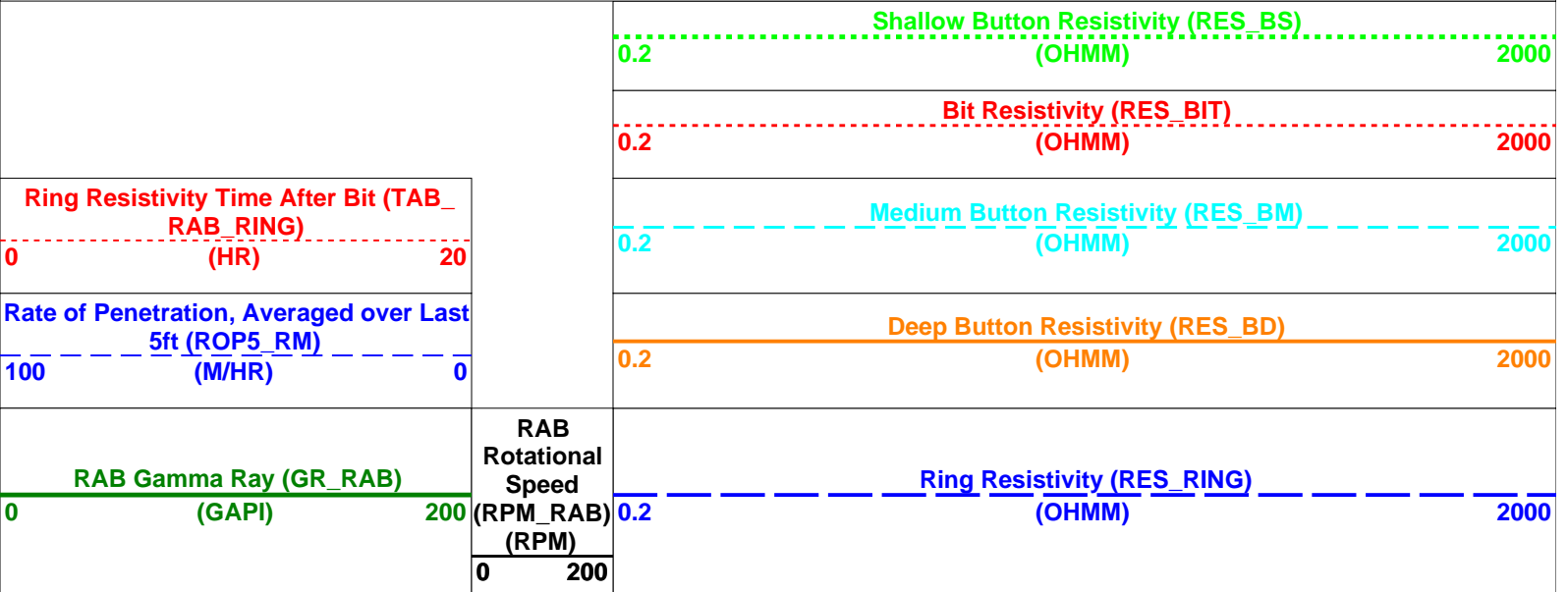
# Madfish-1 geoVISION Service 200MD RM

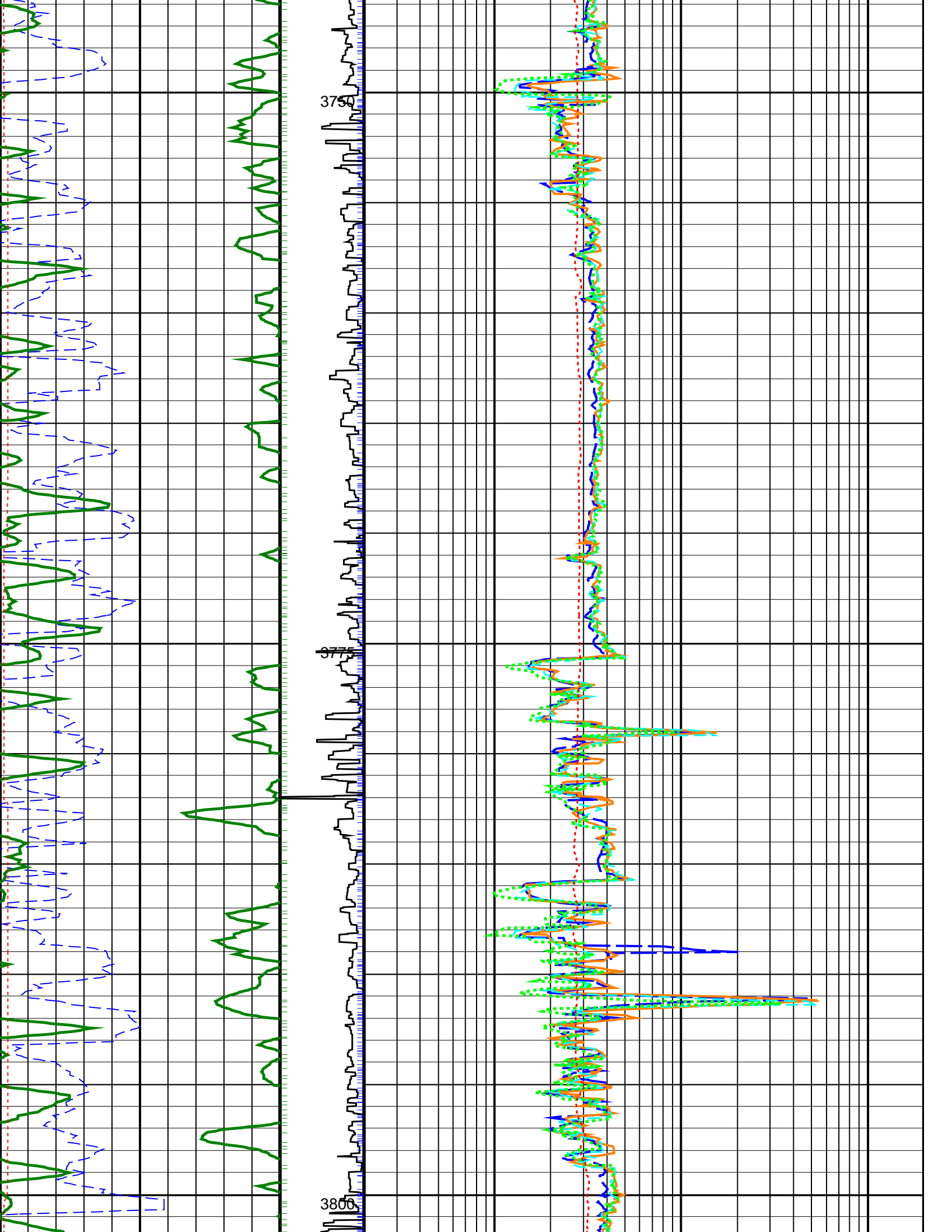
IDEAL Version: ID13\_0C\_08 <MD > Vertical Scale: 1:200

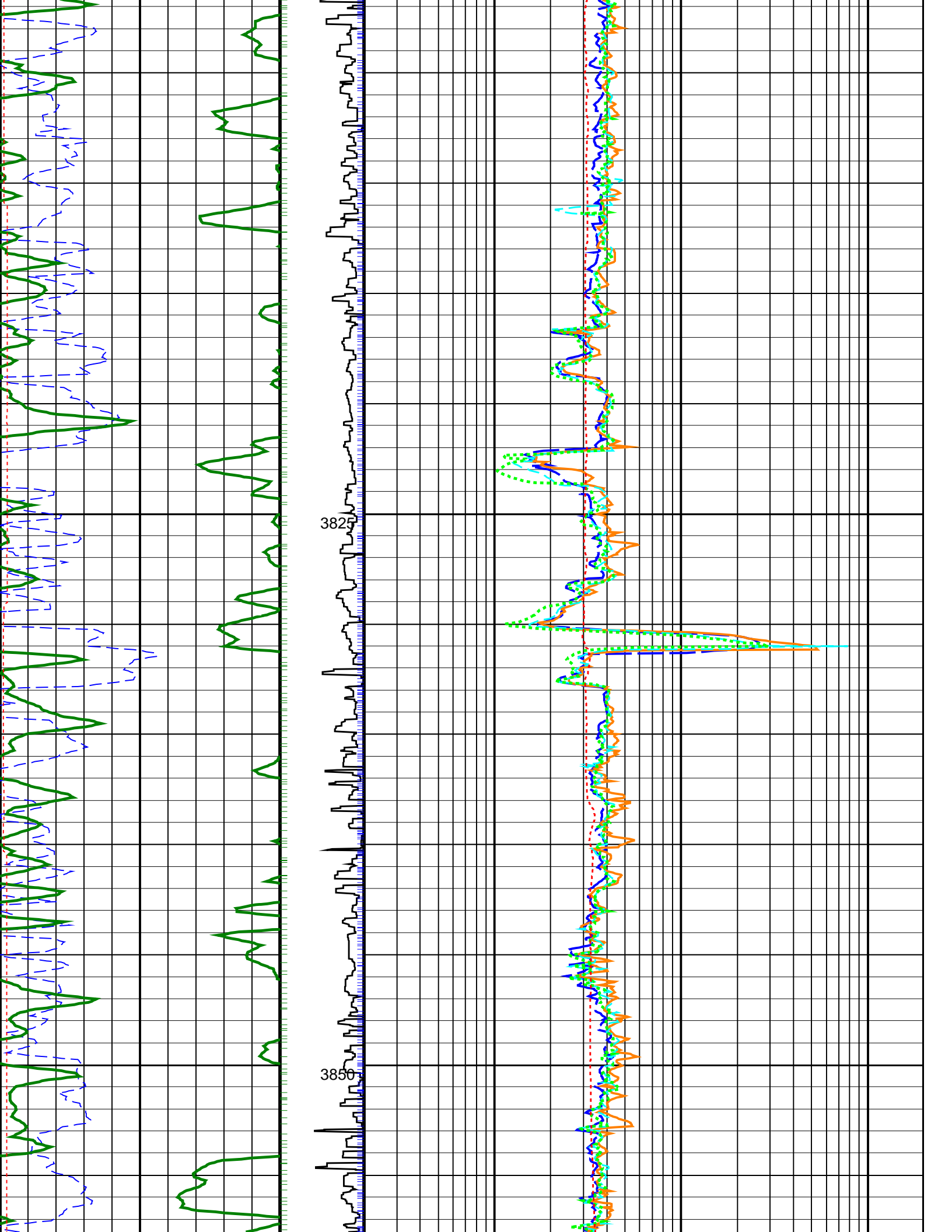
Graphics File Created: 11-Dec-2008 11:01

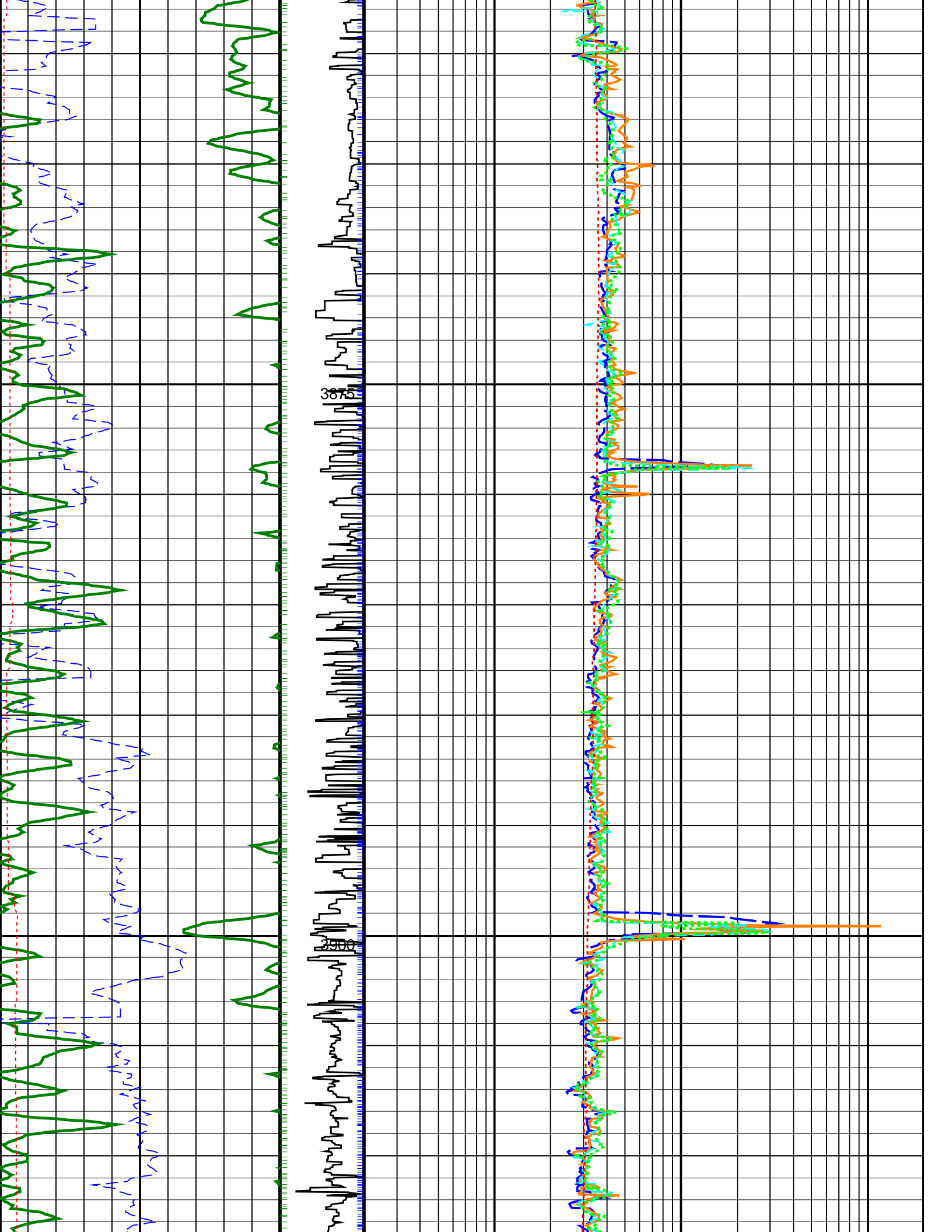
## PIP SUMMARY

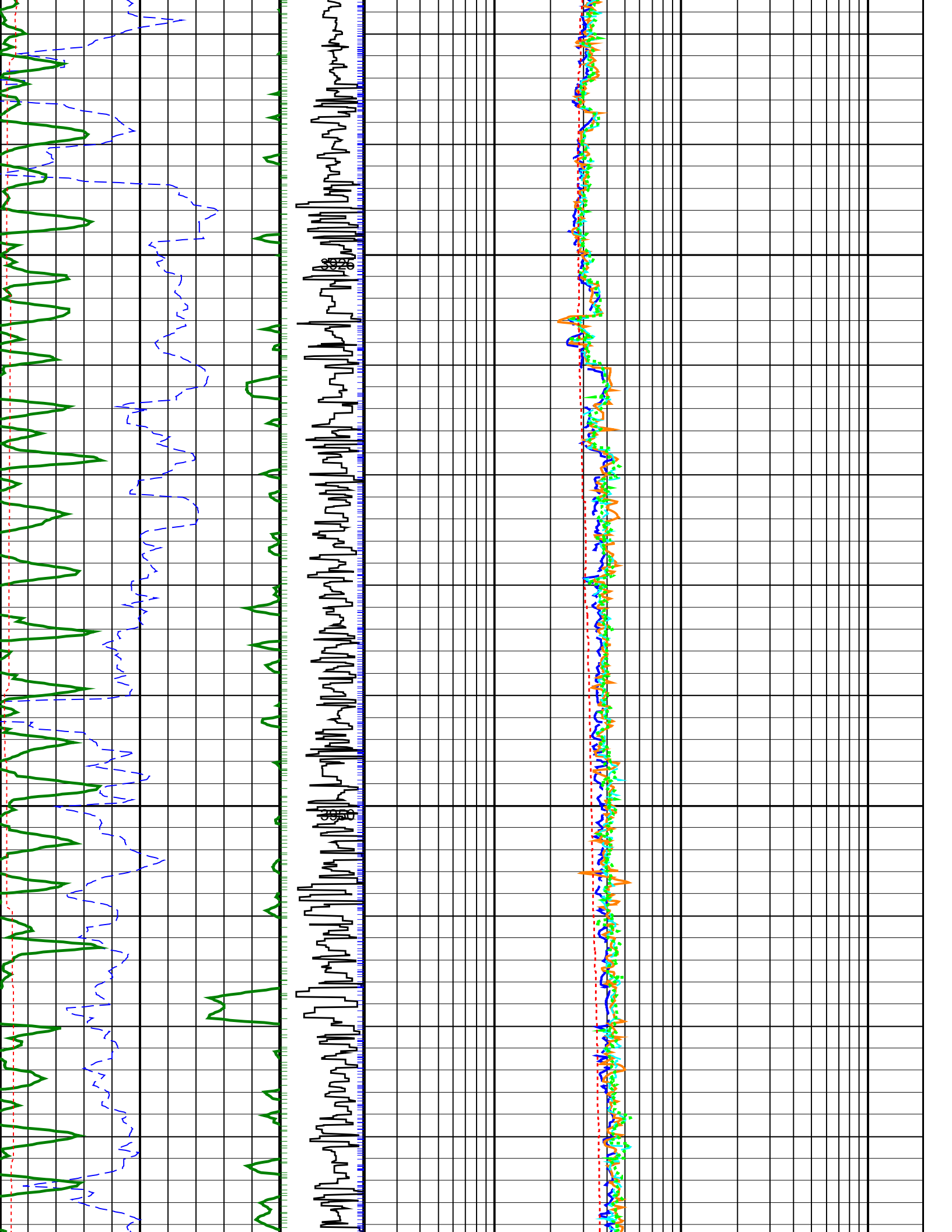
- ┆ Gamma Ray Samples
- ┆ Ring Samples

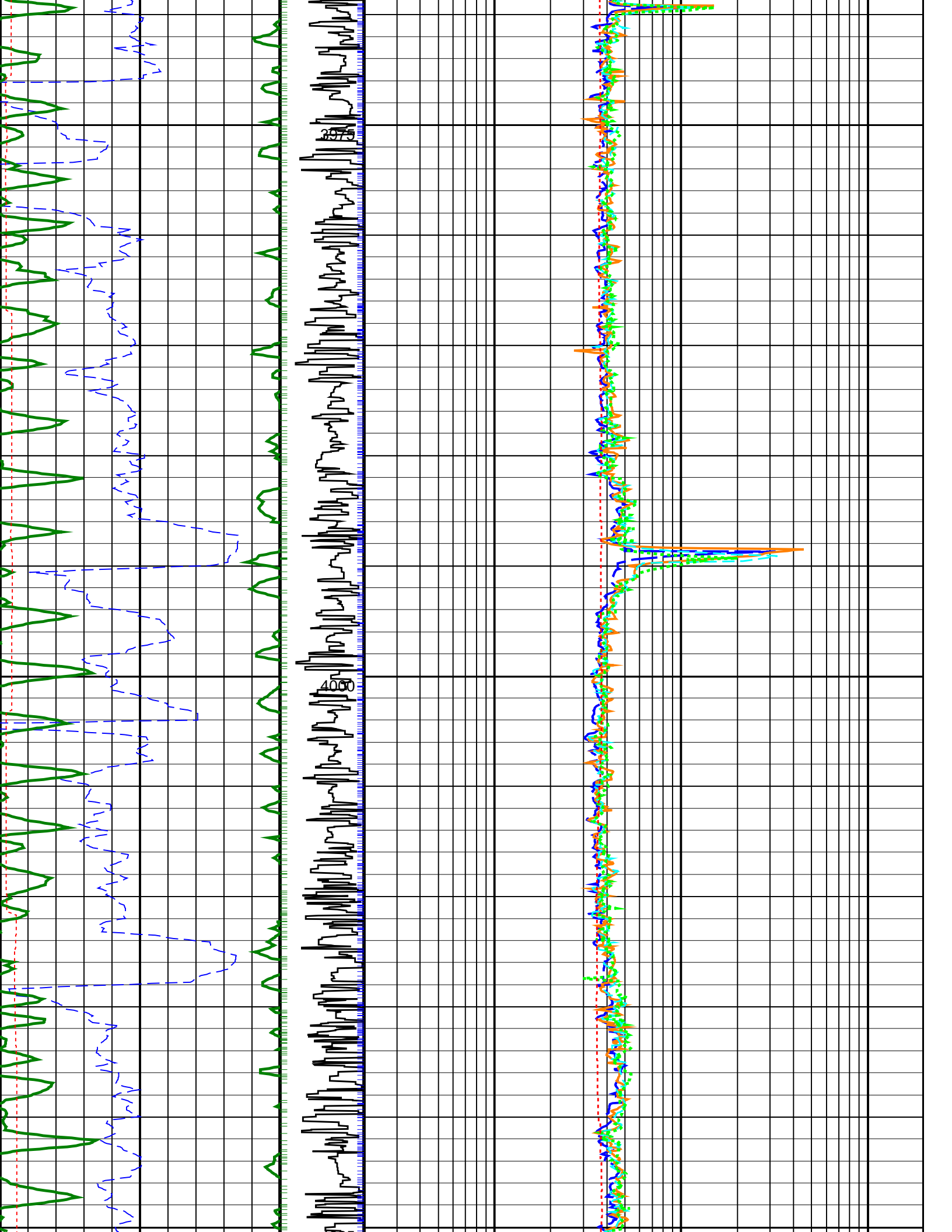


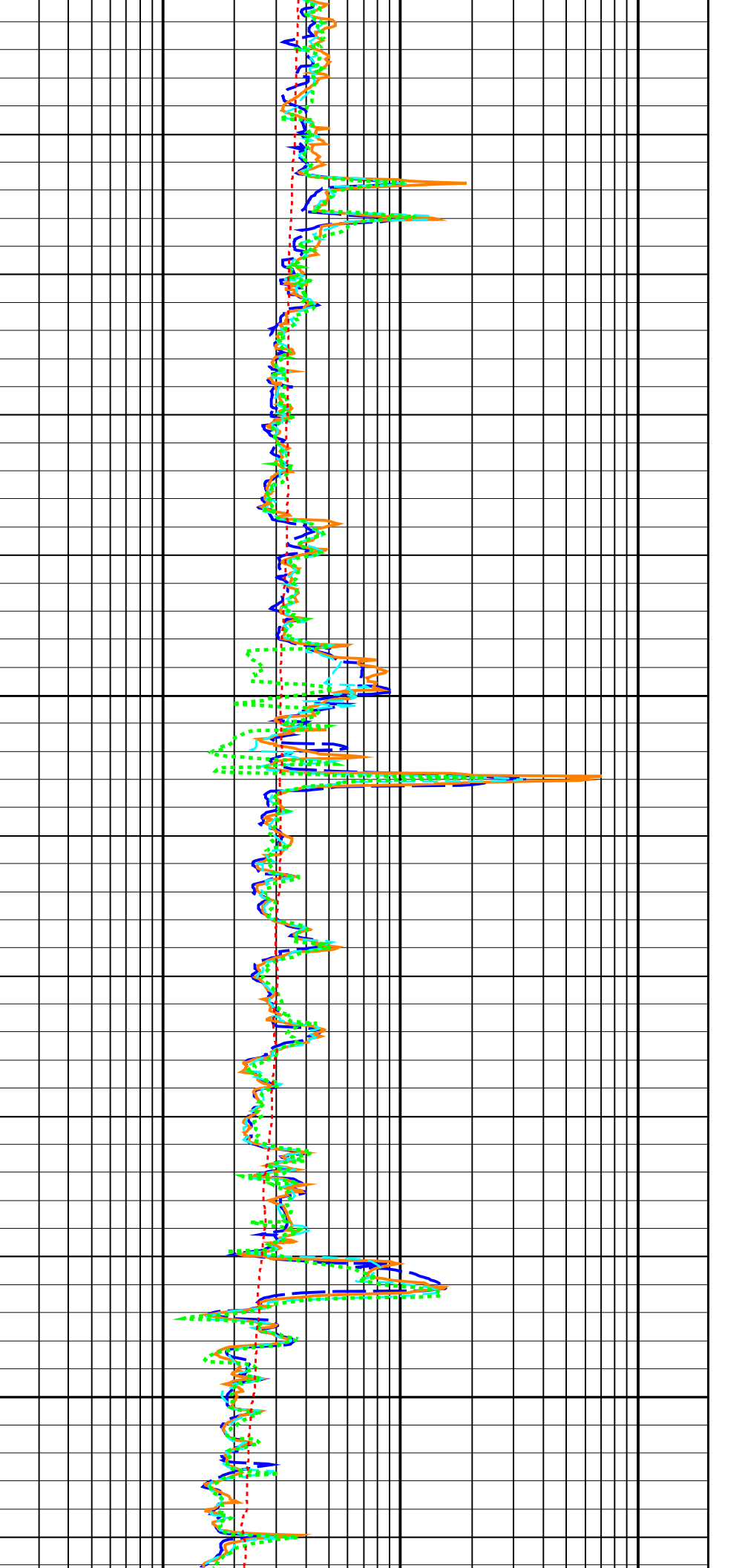
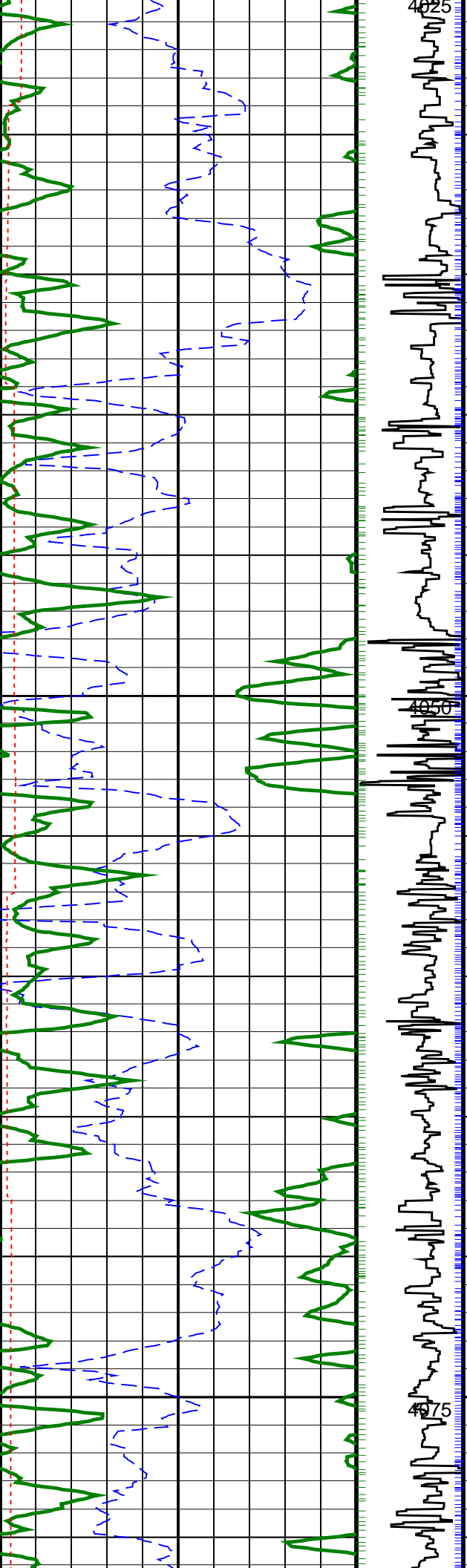


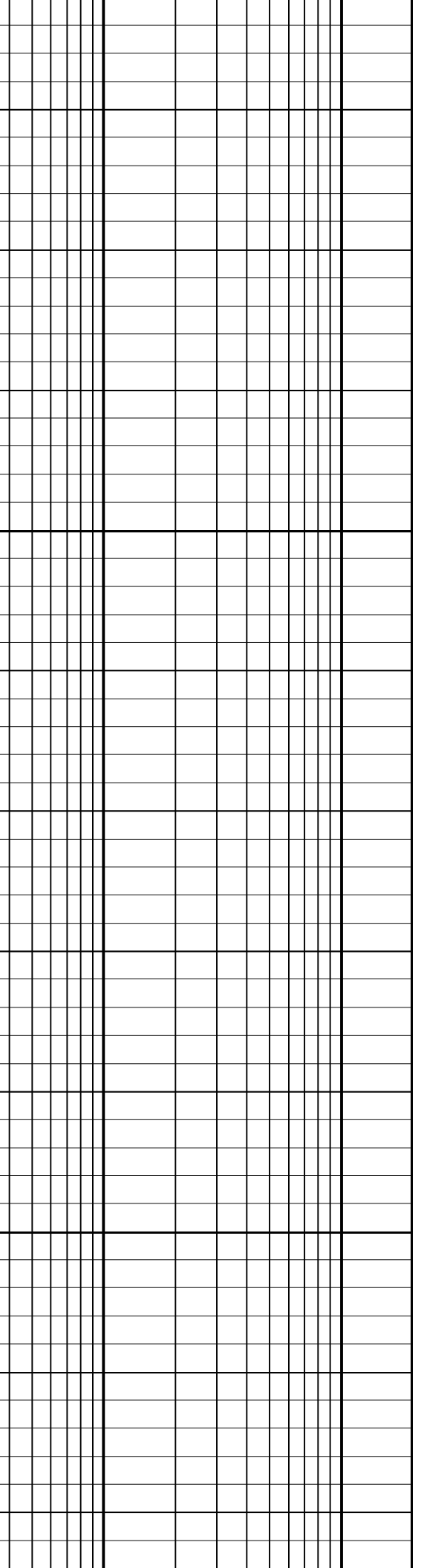
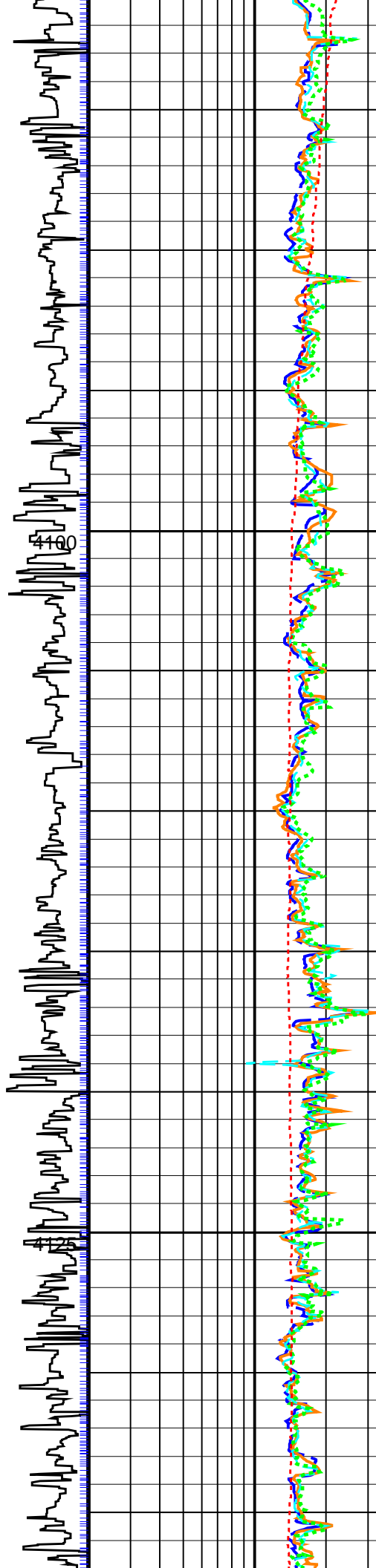
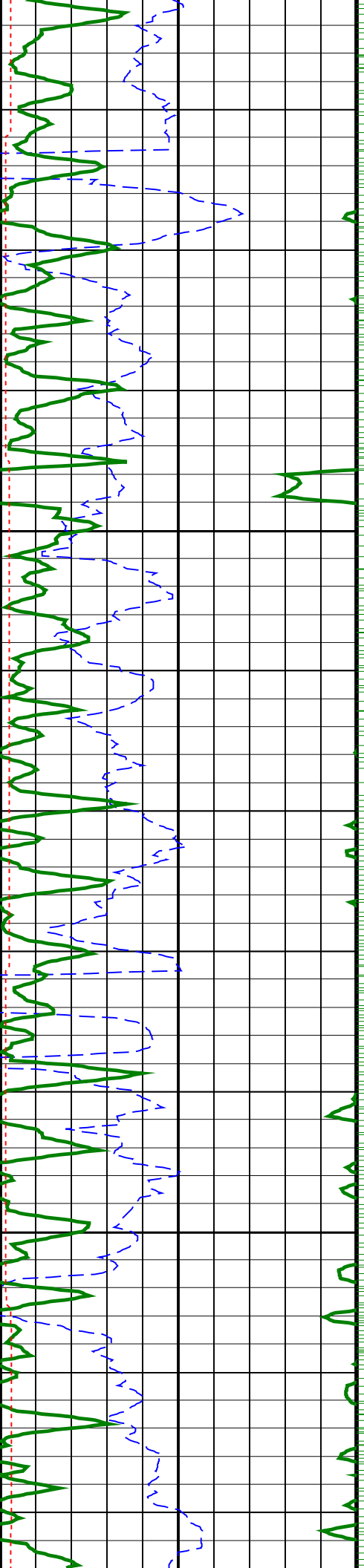




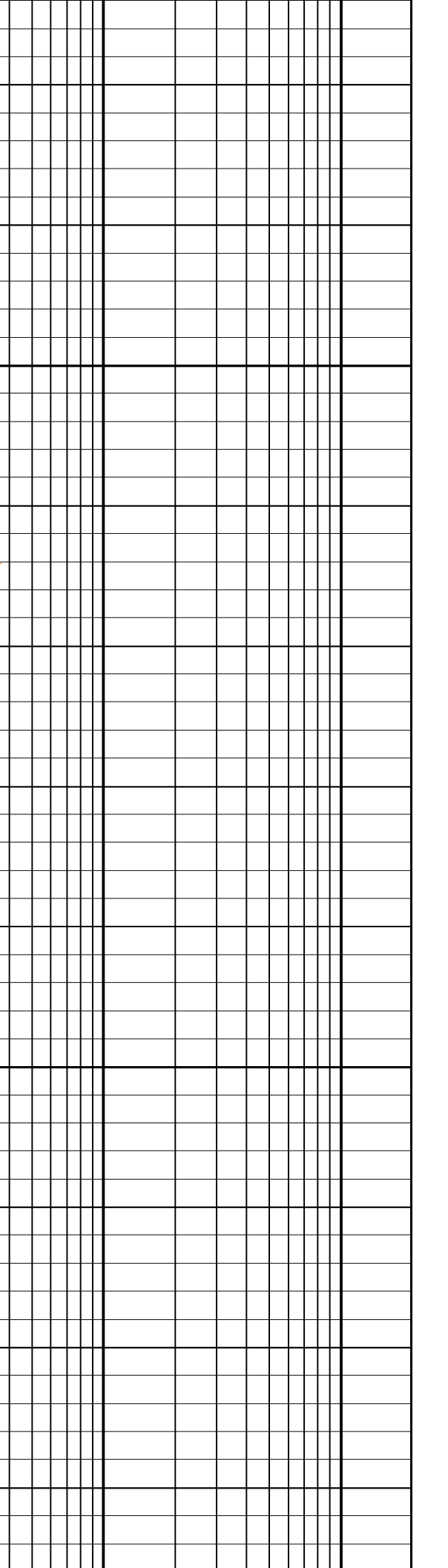
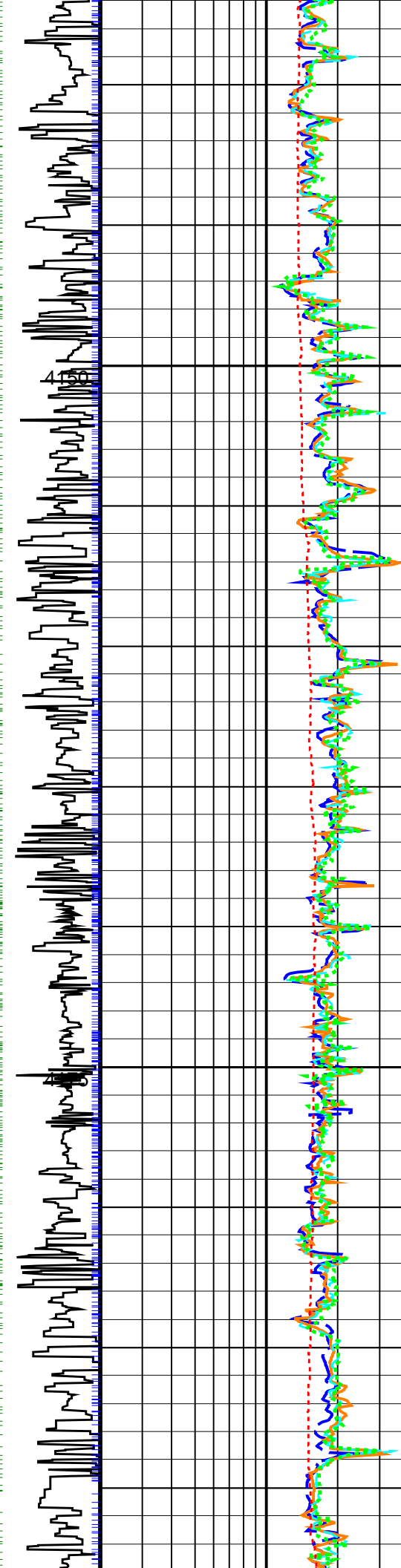
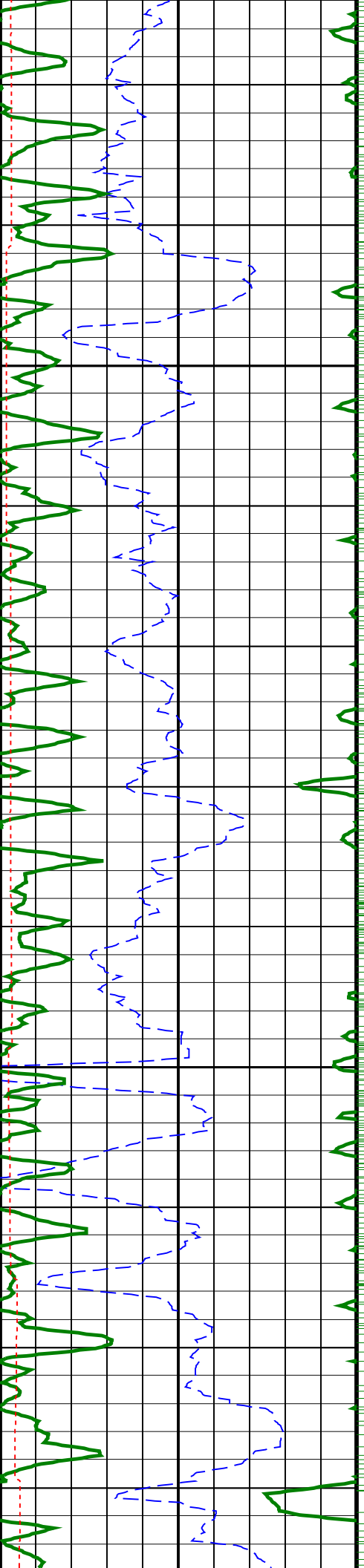


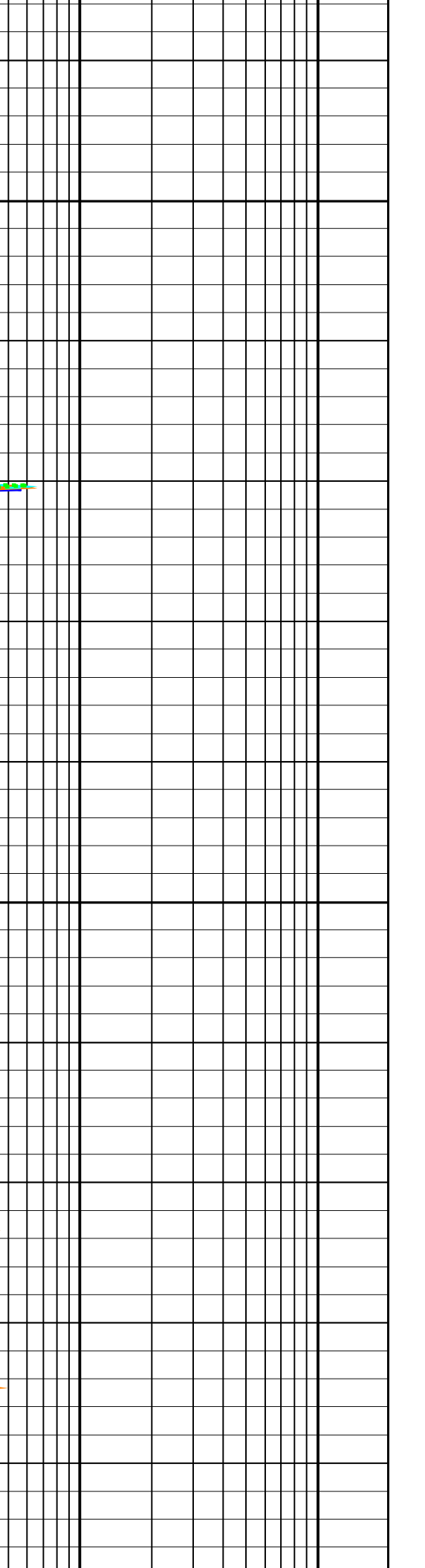
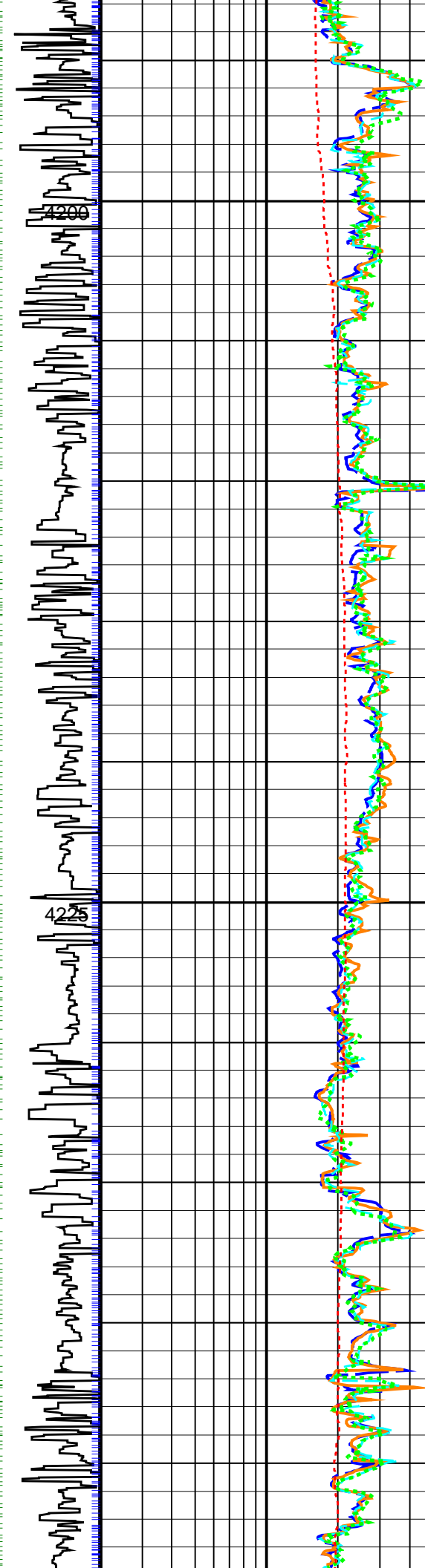
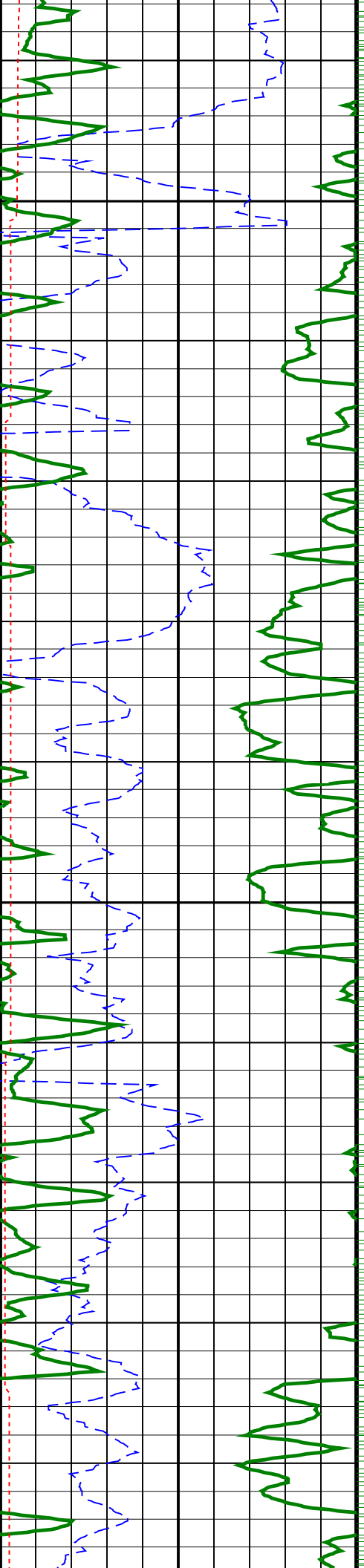


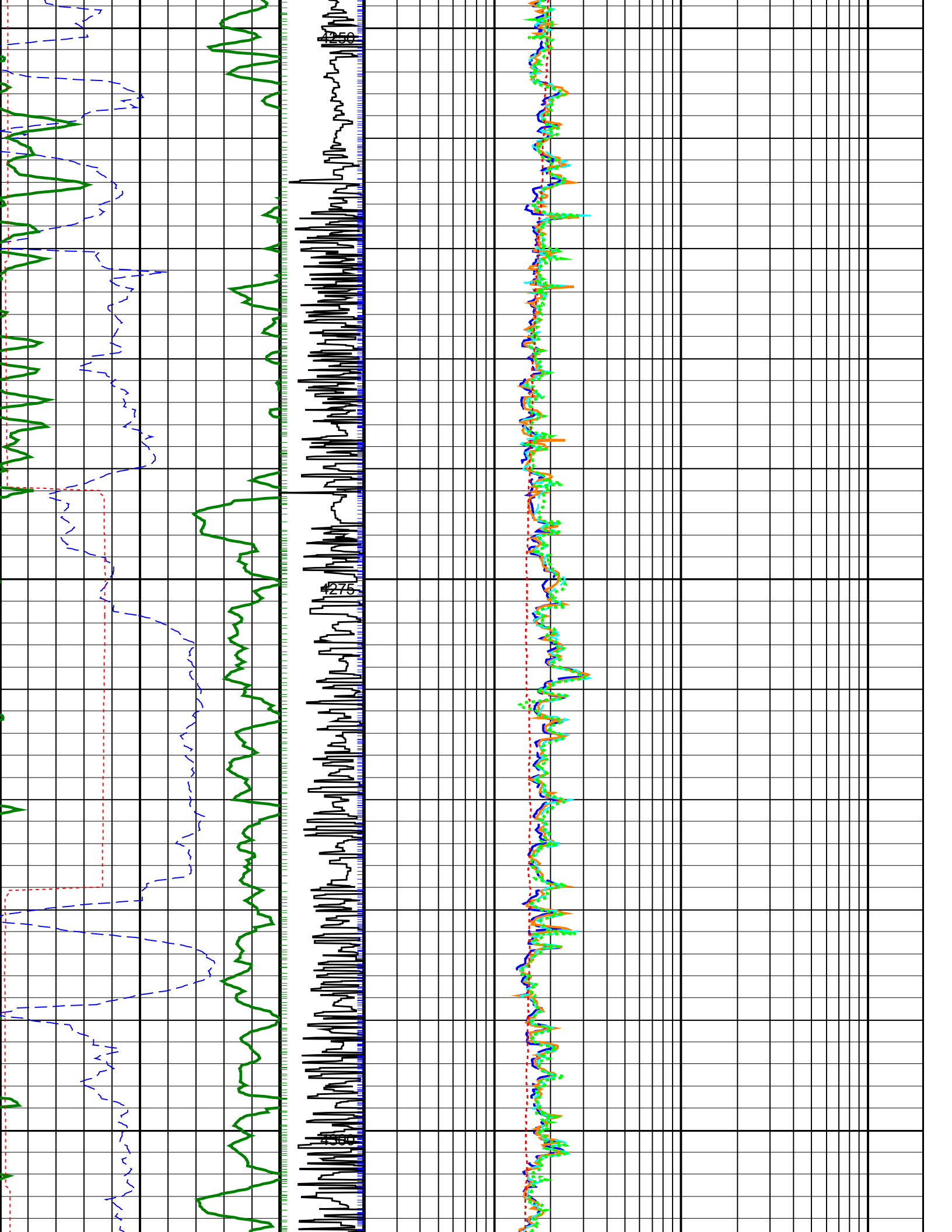


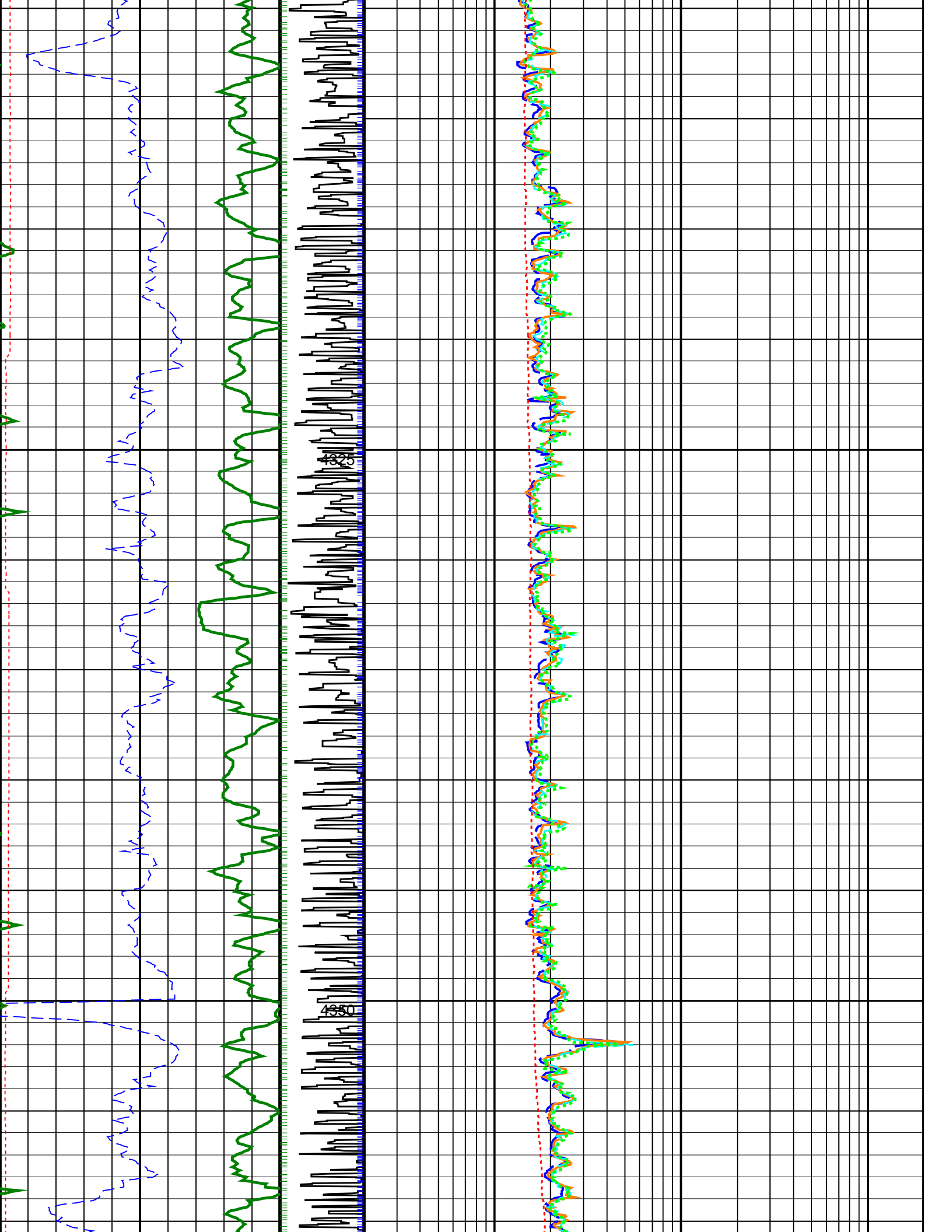


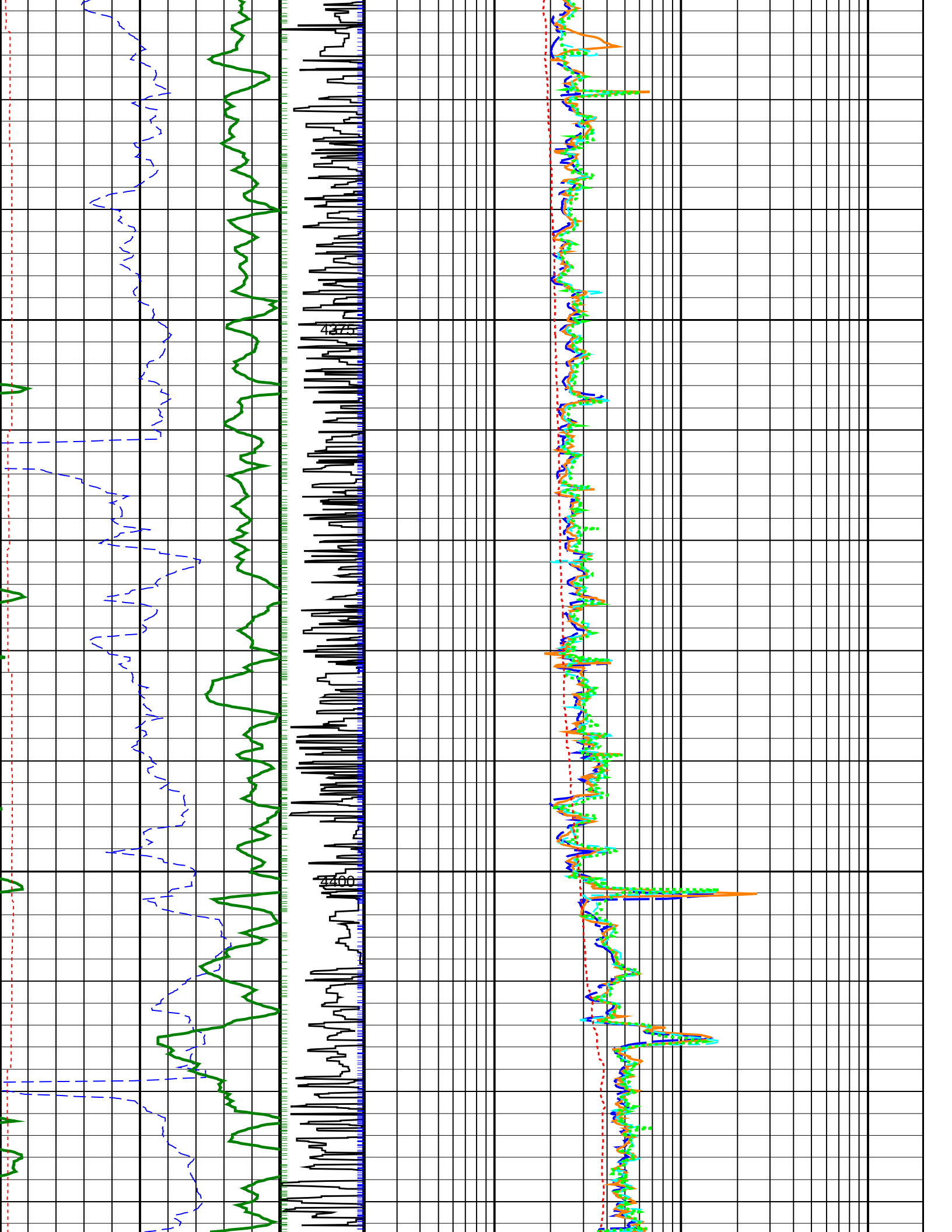


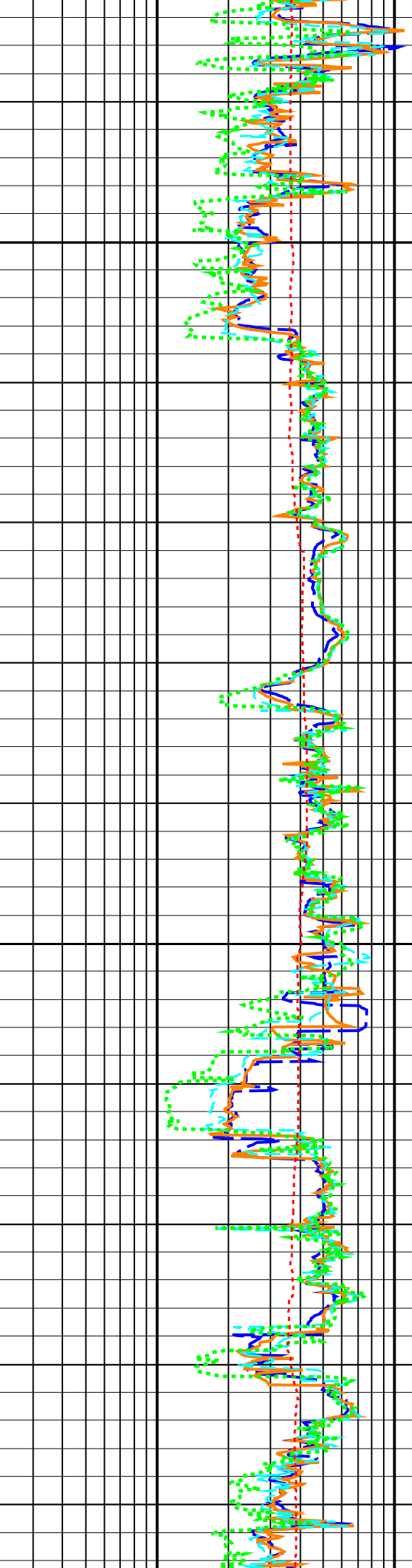
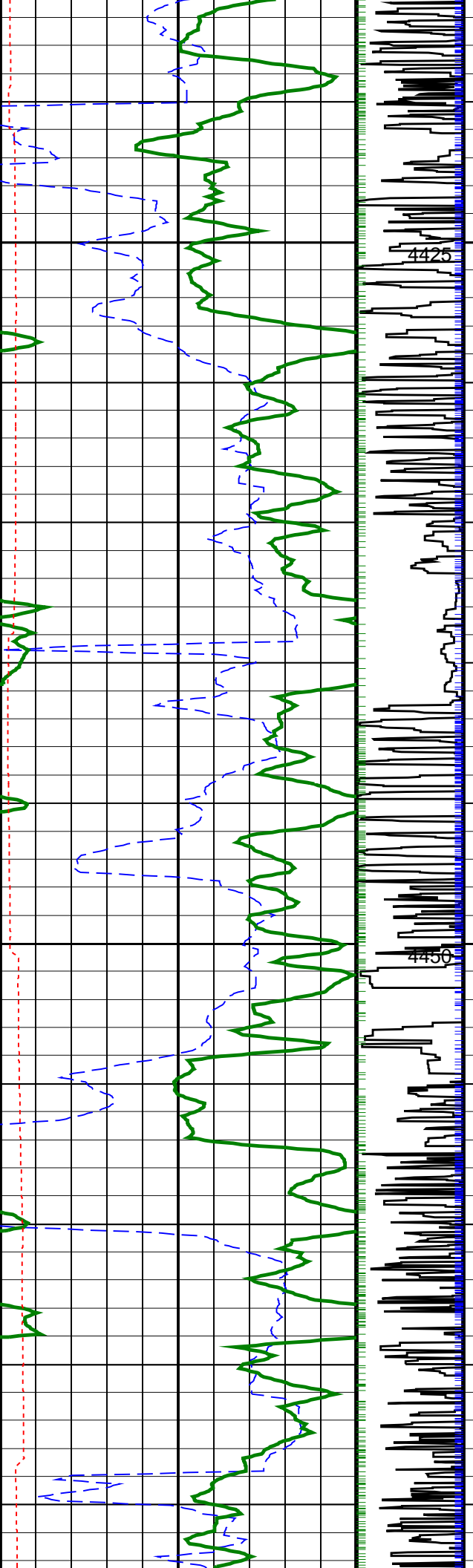






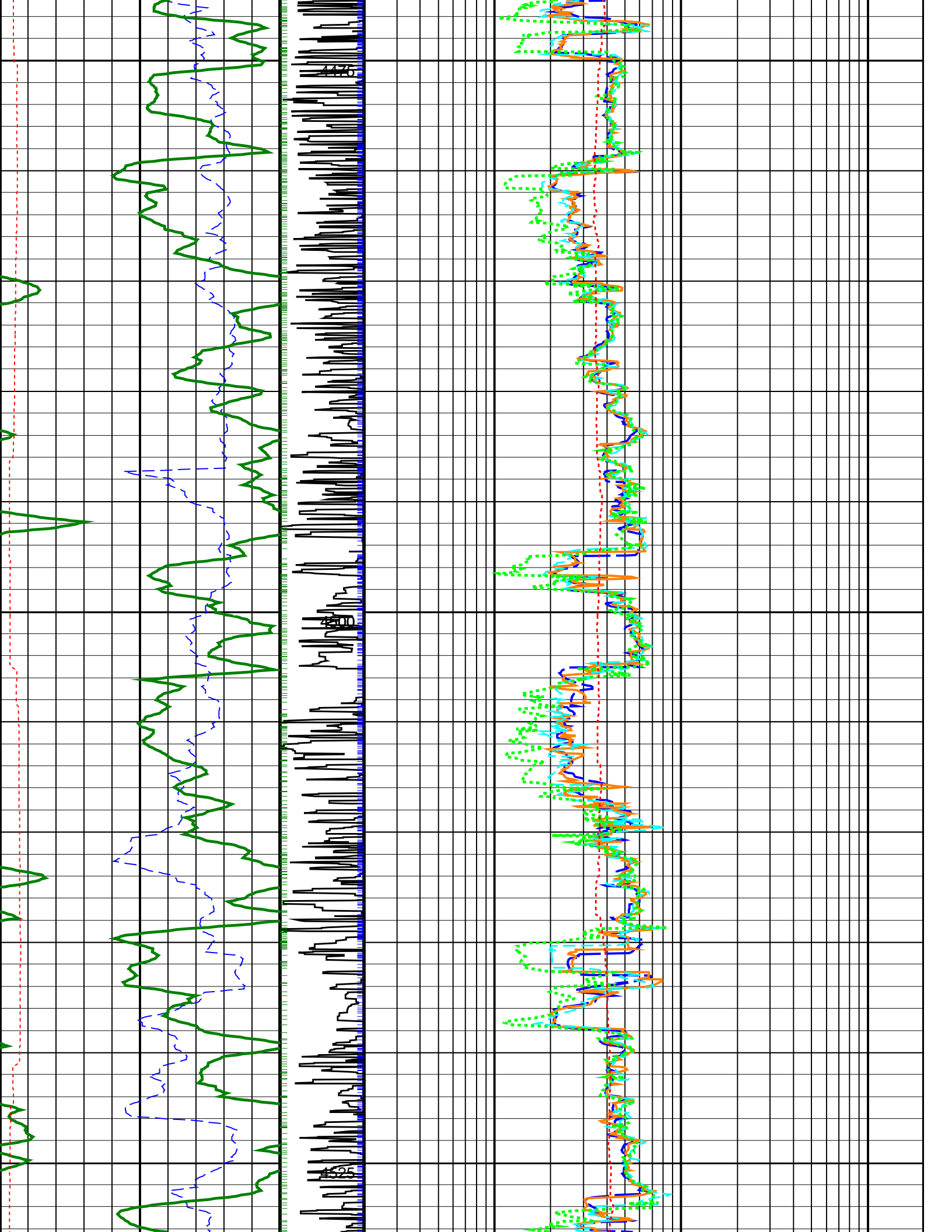


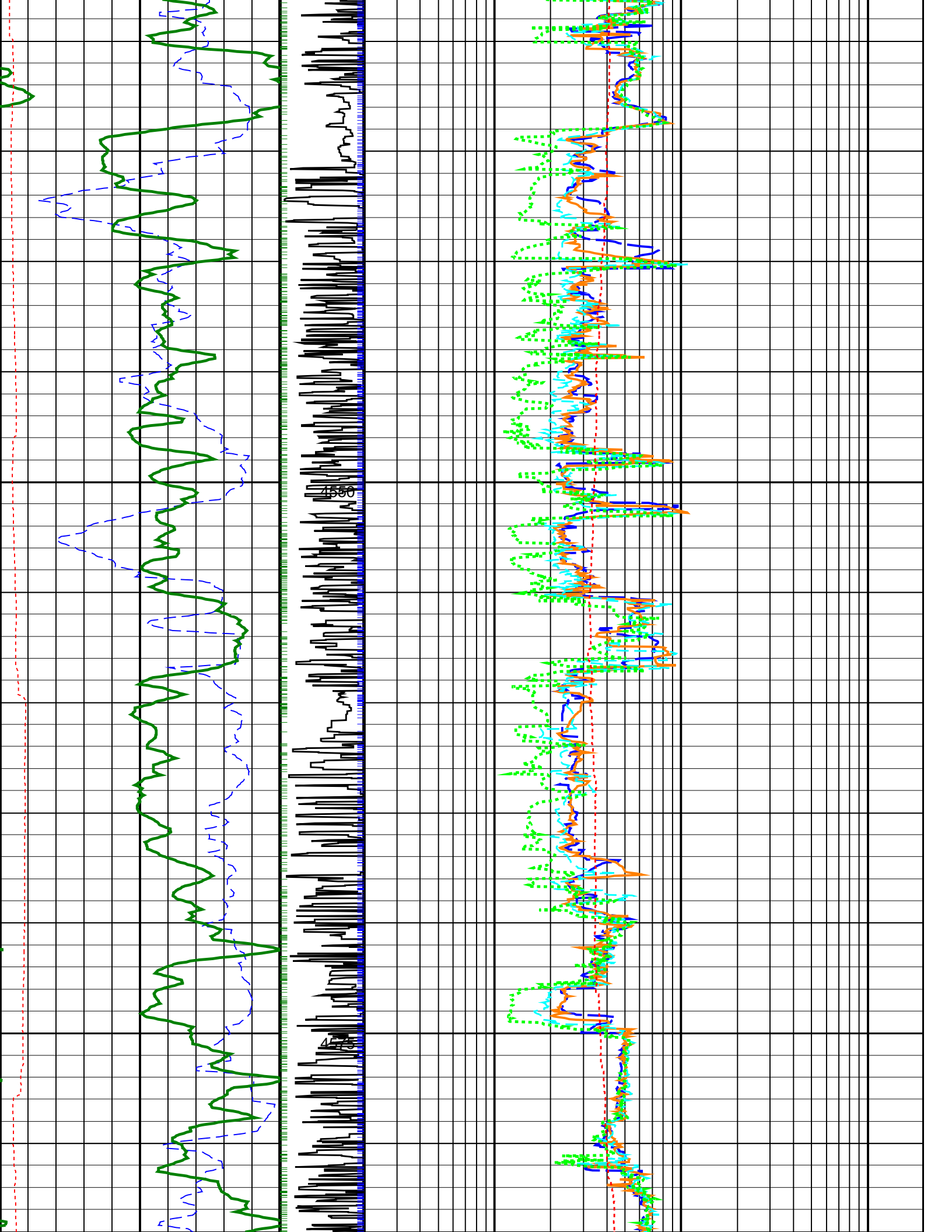




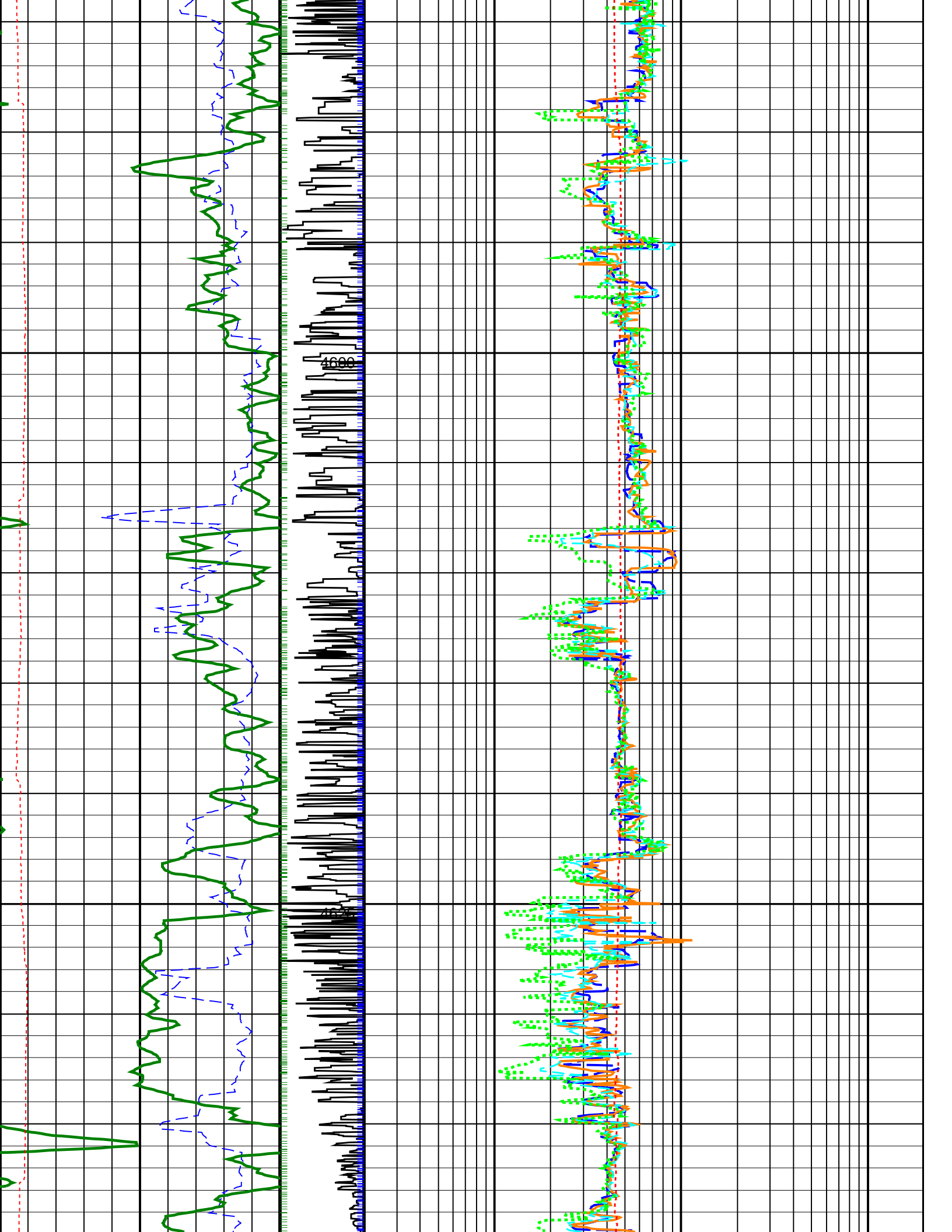
4425

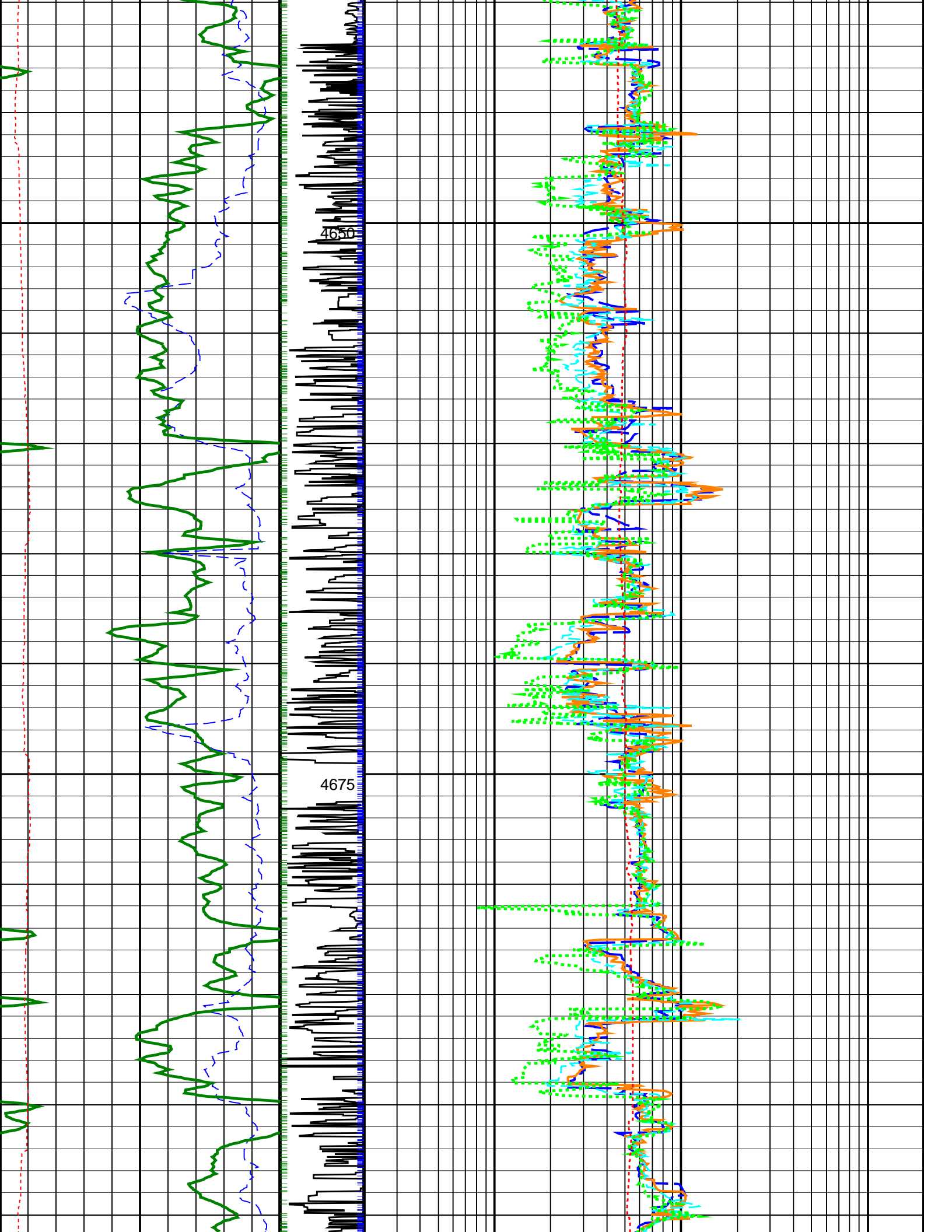
4450

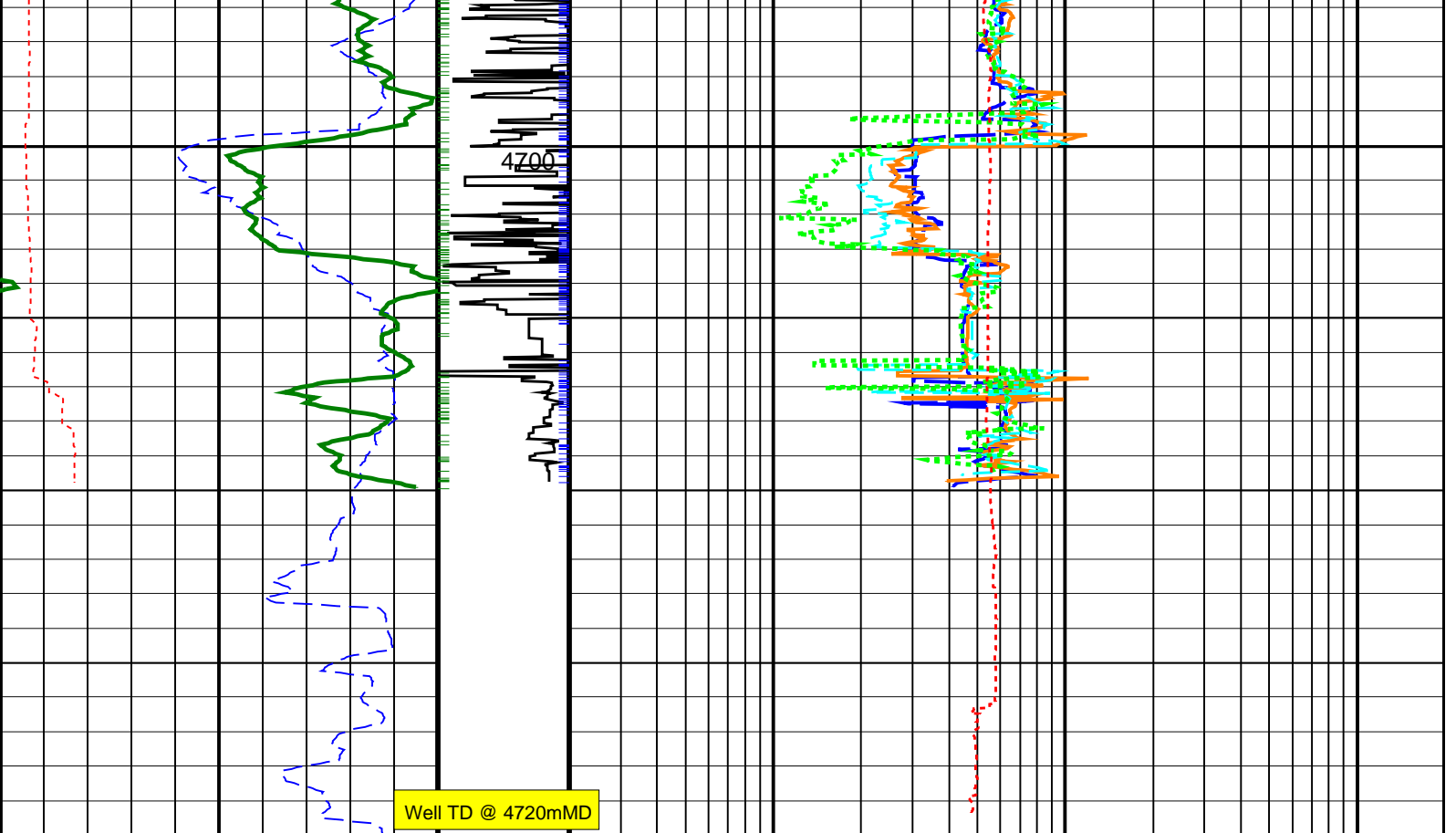












<b>RAB Gamma Ray (GR_RAB)</b> (GAPI)	<b>RAB Rotational Speed (RPM_RAB)</b> (RPM)	<b>Ring Resistivity (RES_RING)</b> (OHMM)
0 200	0.2 200	0.2 2000
<b>Rate of Penetration, Averaged over Last 5ft (ROP5_RM)</b> (M/HR)	<b>Deep Button Resistivity (RES_BD)</b> (OHMM)	<b>Medium Button Resistivity (RES_BM)</b> (OHMM)
100 0	0.2 2000	0.2 2000
<b>Ring Resistivity Time After Bit (TAB_RAB_RING)</b> (HR)	<b>Bit Resistivity (RES_BIT)</b> (OHMM)	<b>Shallow Button Resistivity (RES_BS)</b> (OHMM)
0 20	0.2 2000	0.2 2000

**PIP SUMMARY**

- + Gamma Ray Samples
- + Ring Samples