

## Madfish-1 Apache Energy Ltd

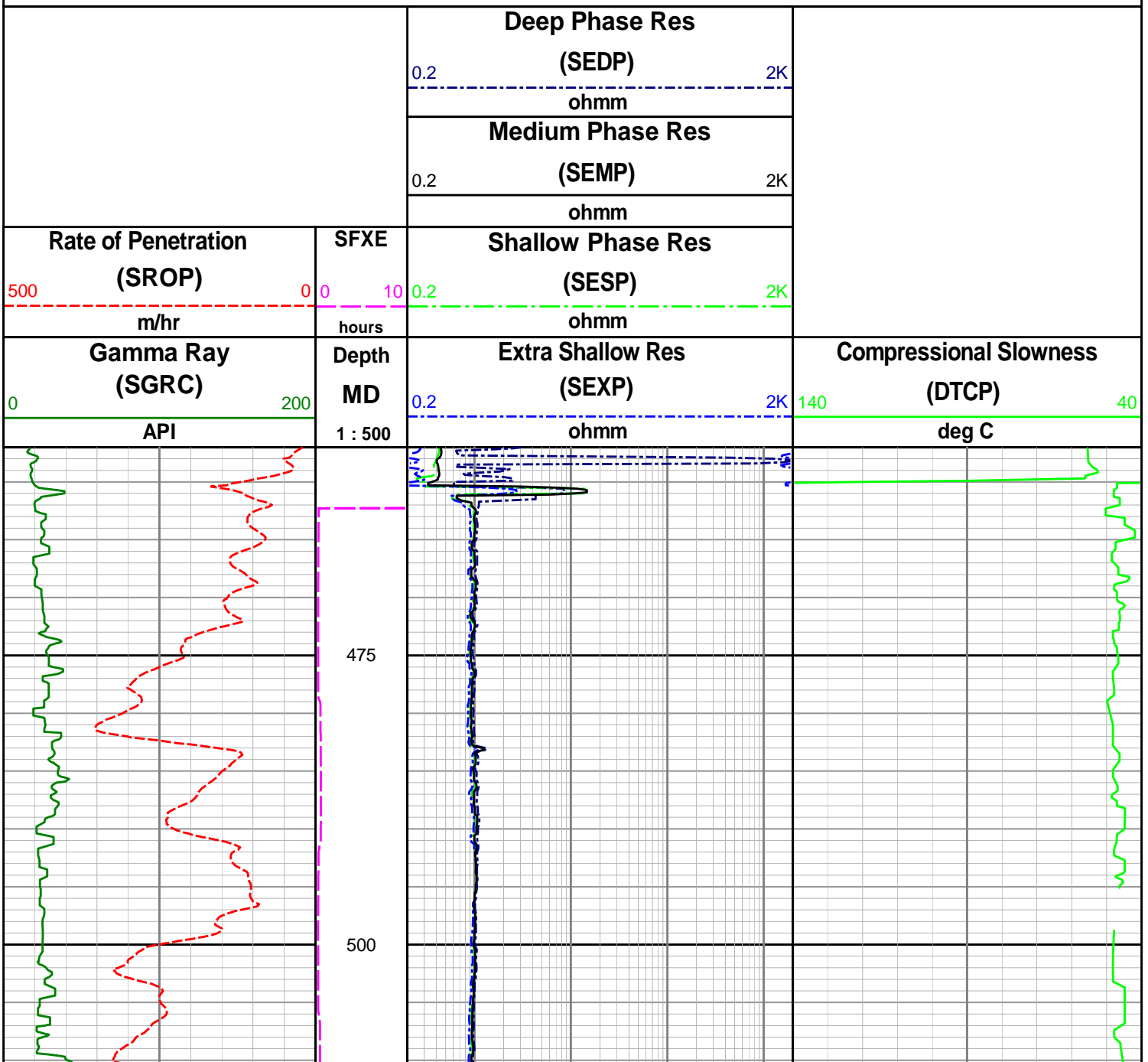
### Recorded LWD Data - Field Data 406mm Hole Section

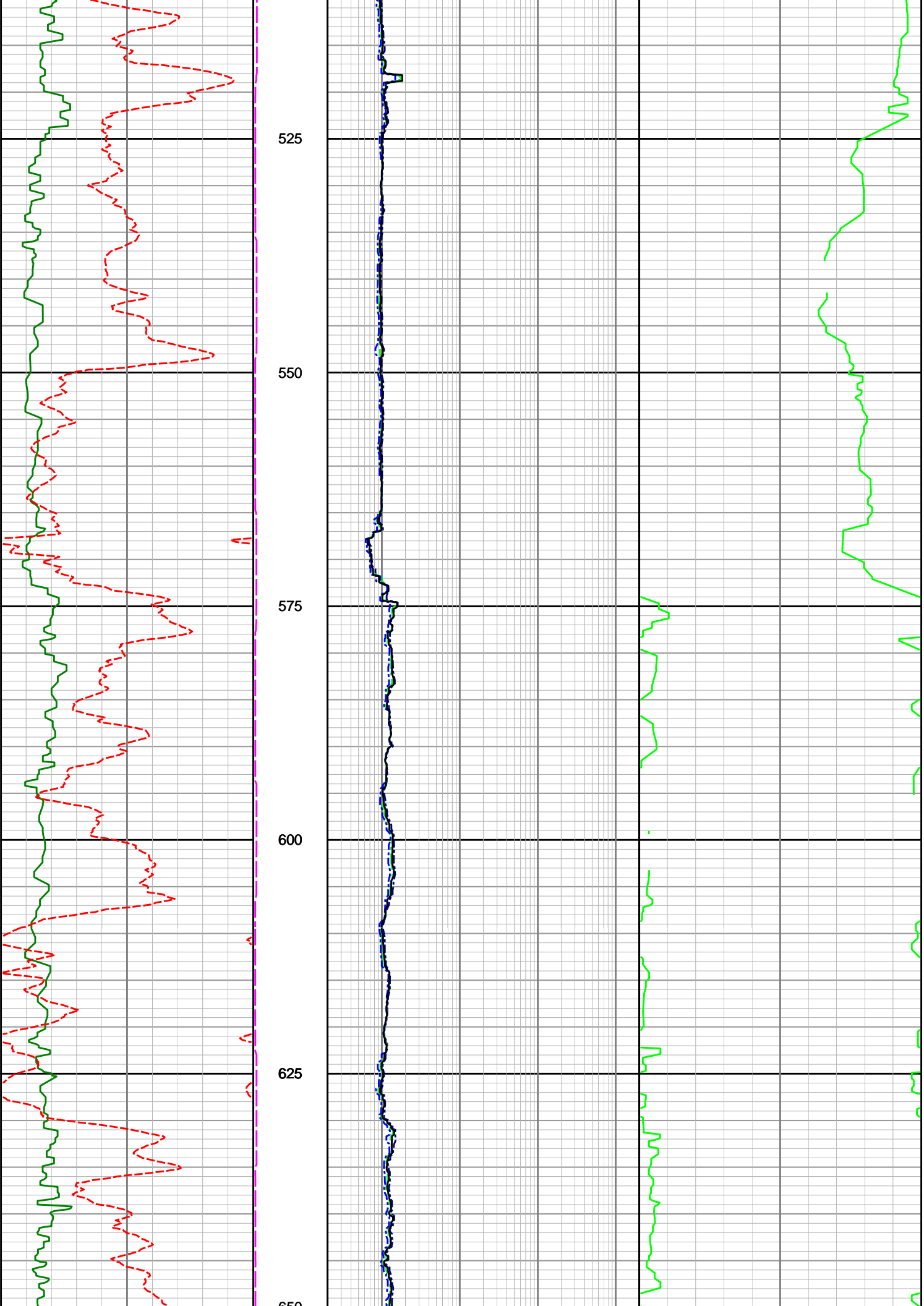
**Environmental Parameters:**

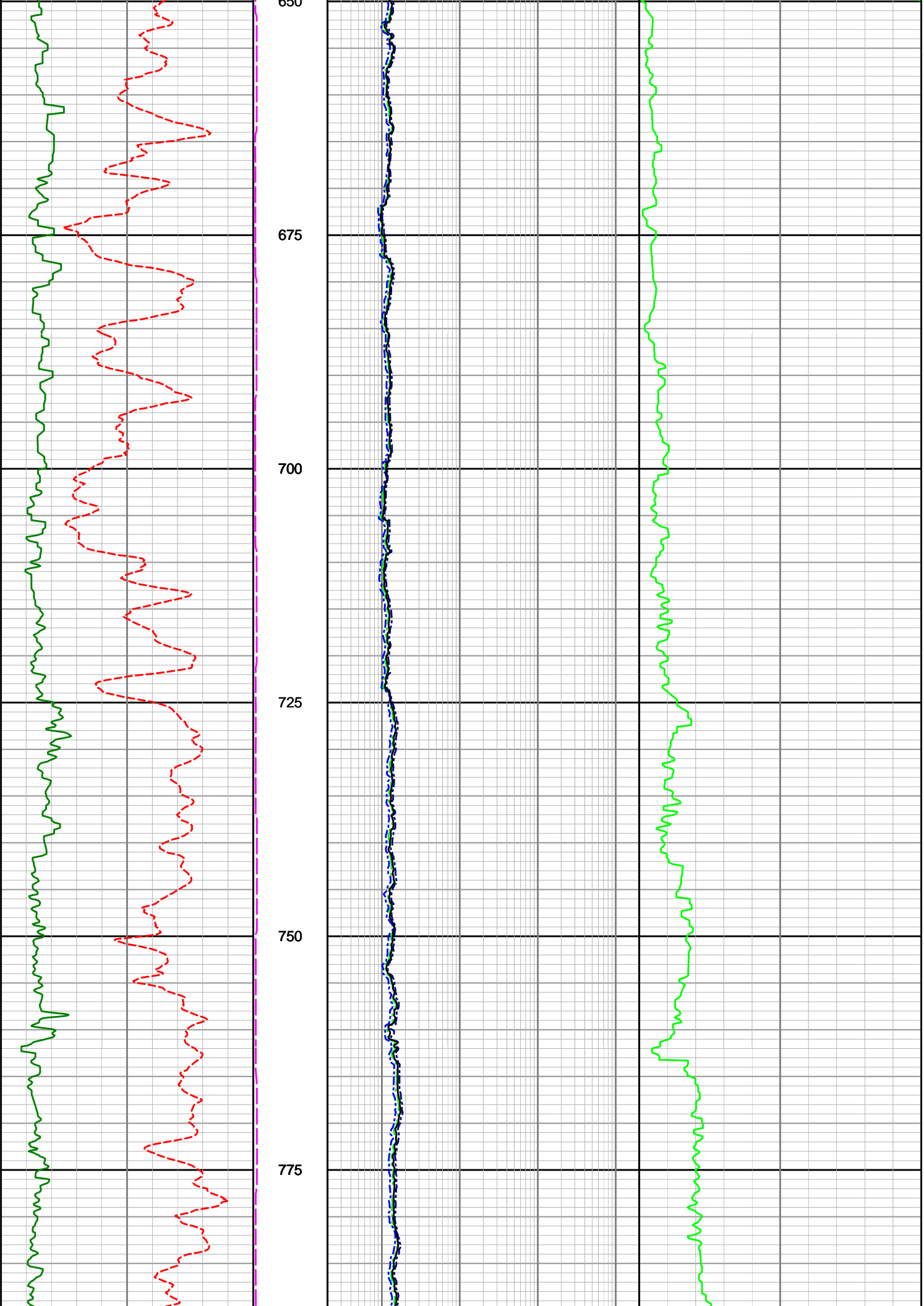
Hole Size = 406mm, Tool Size = 241mm  
Mud Type = Sea Water with gel sweeps  
MW = 1.03 sg

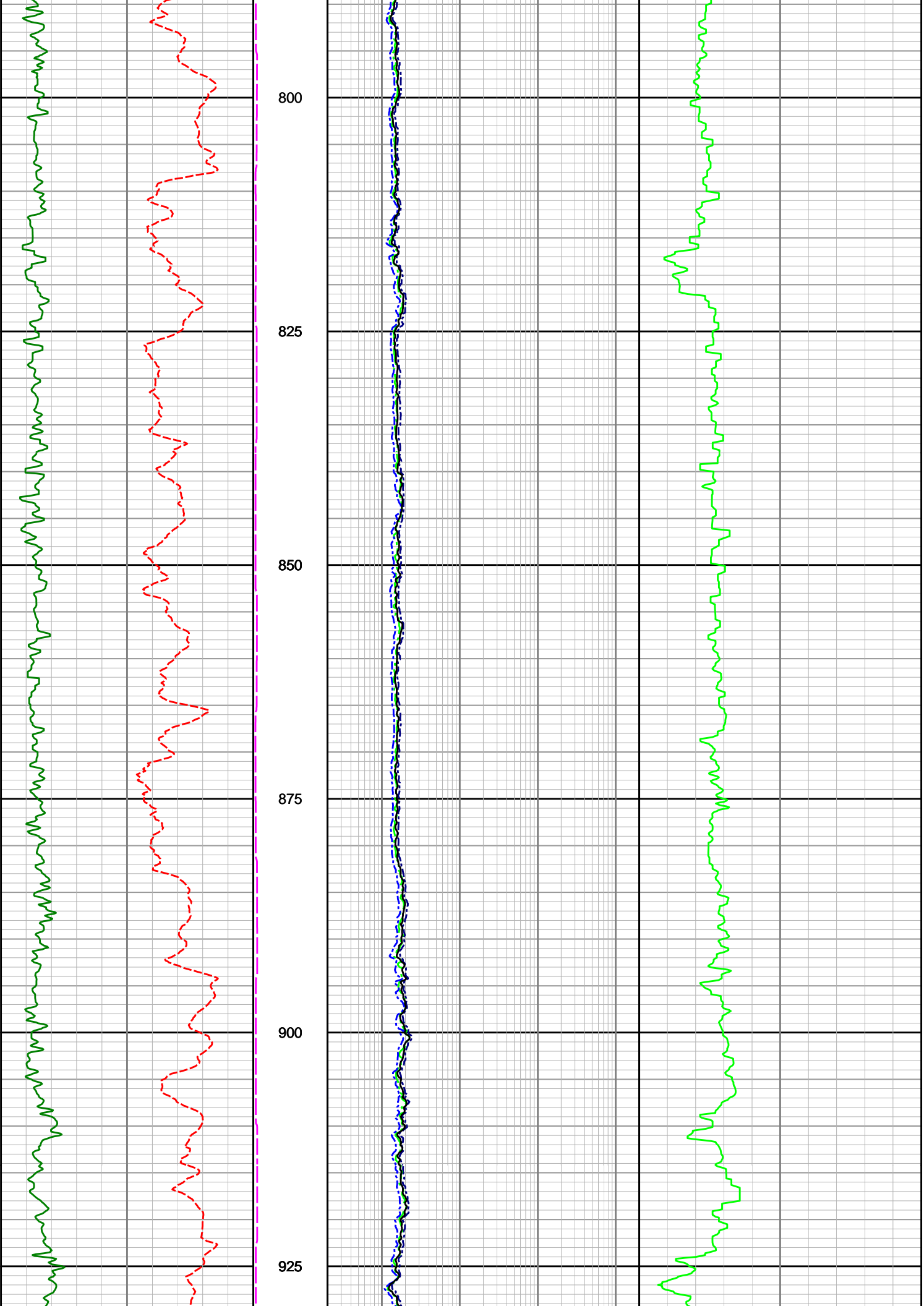
**Remarks:**

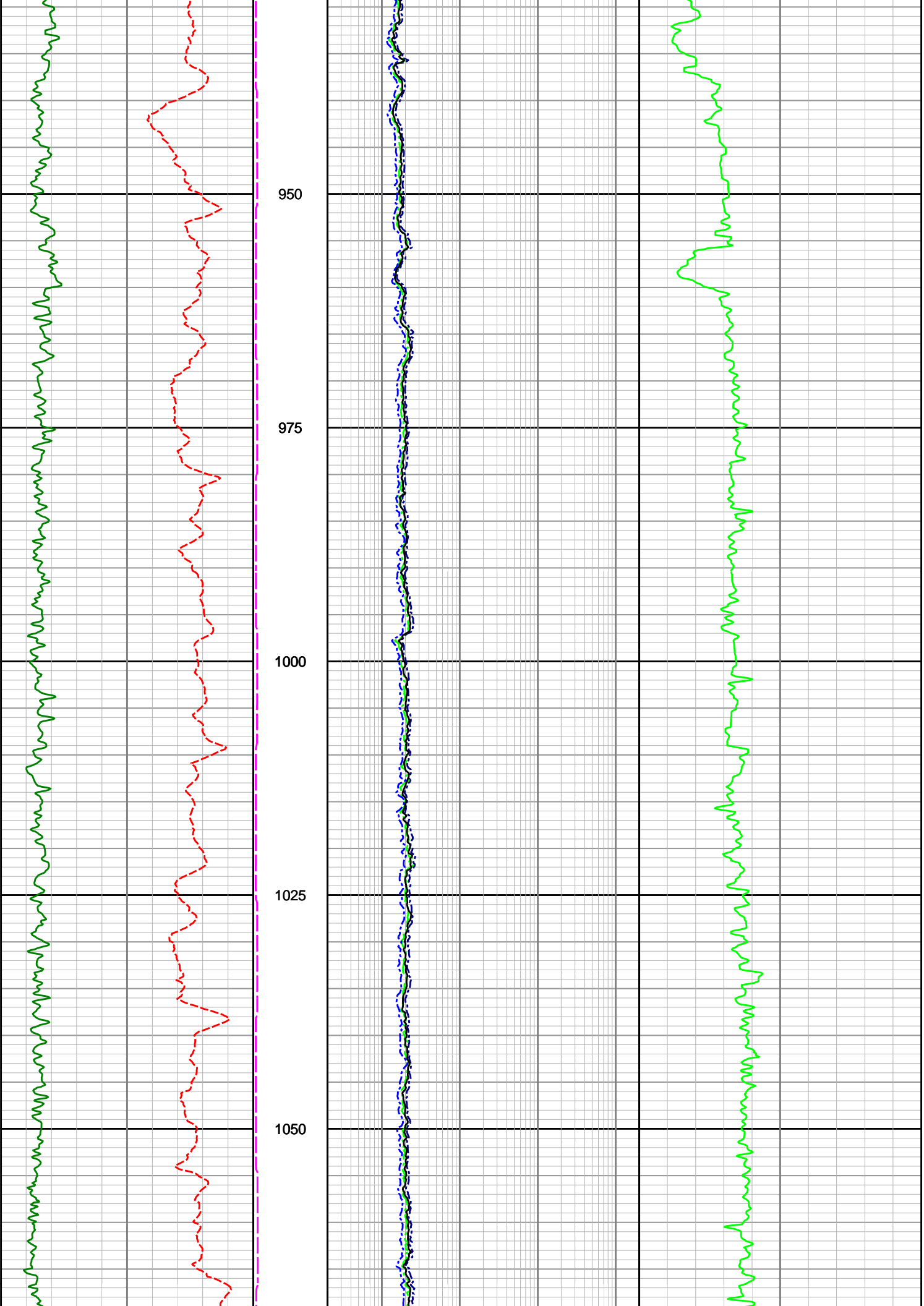
1. Gamma Ray have been environmentally corrected using the listed parameters where appropriate.
2. Data gaps in compressional slowness to data due to high ROP.

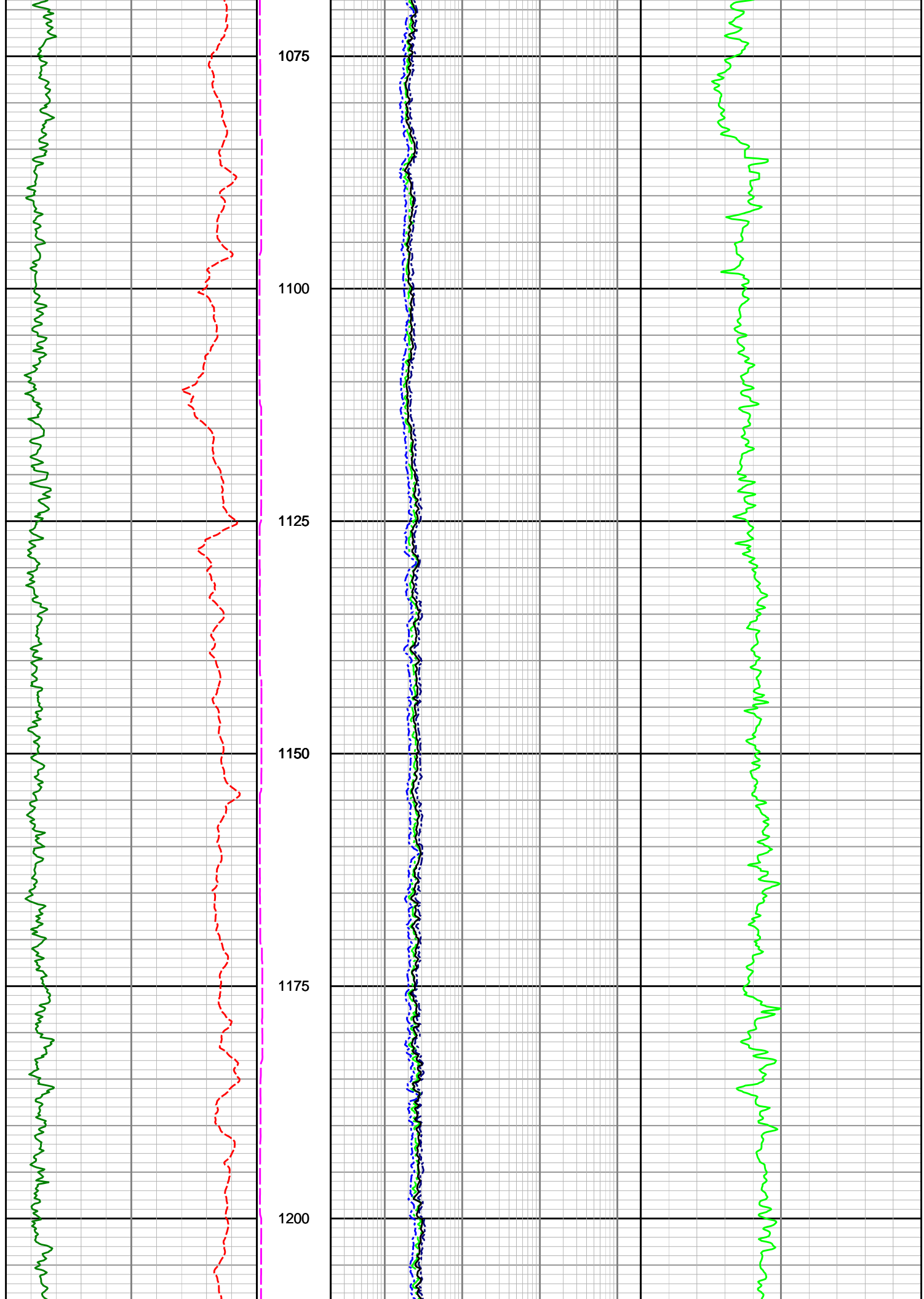


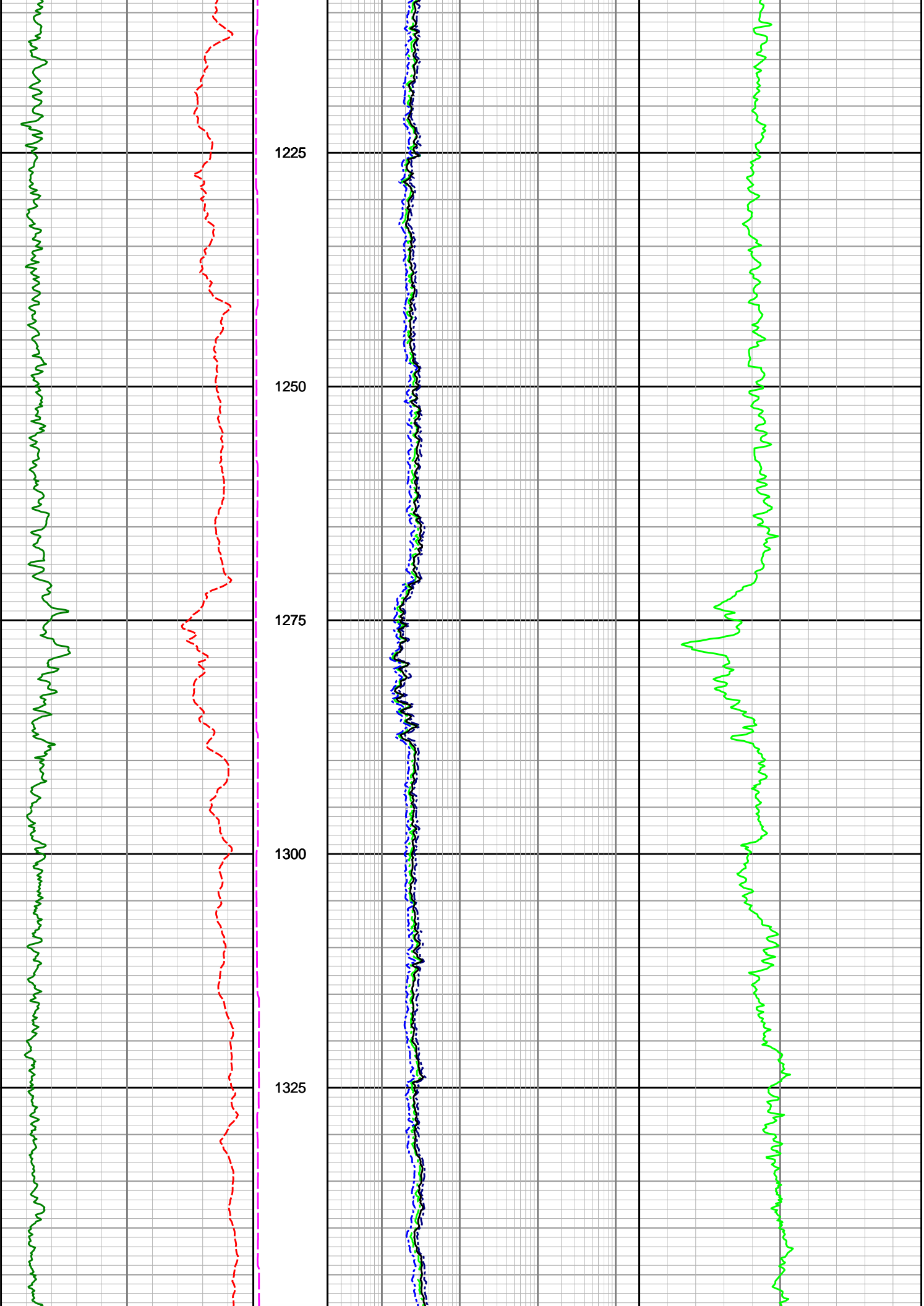












1350

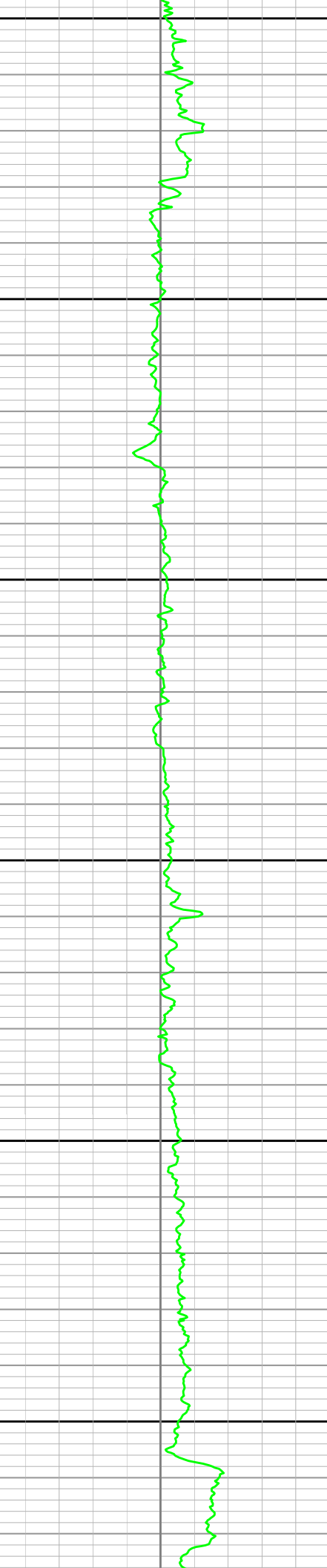
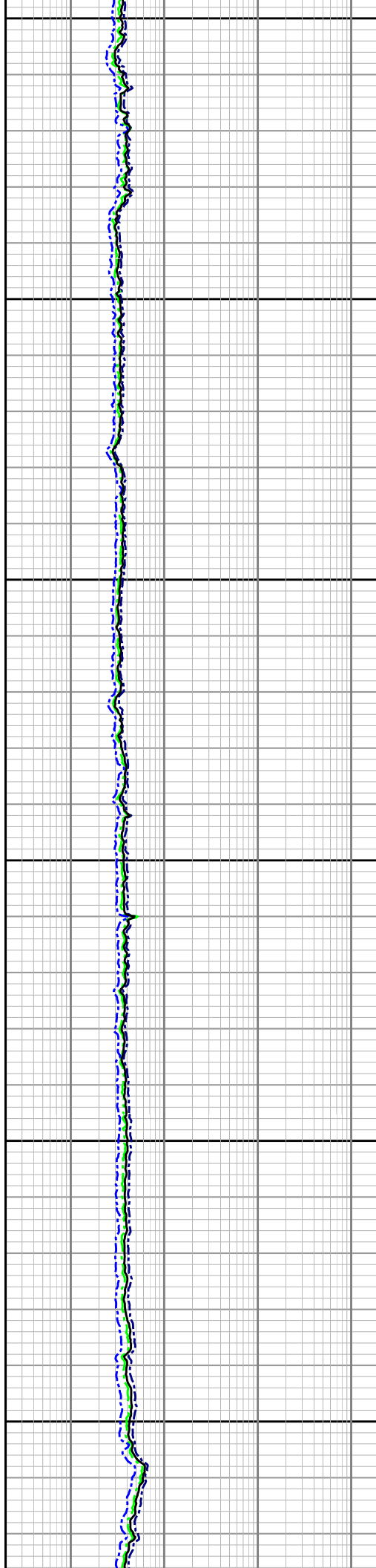
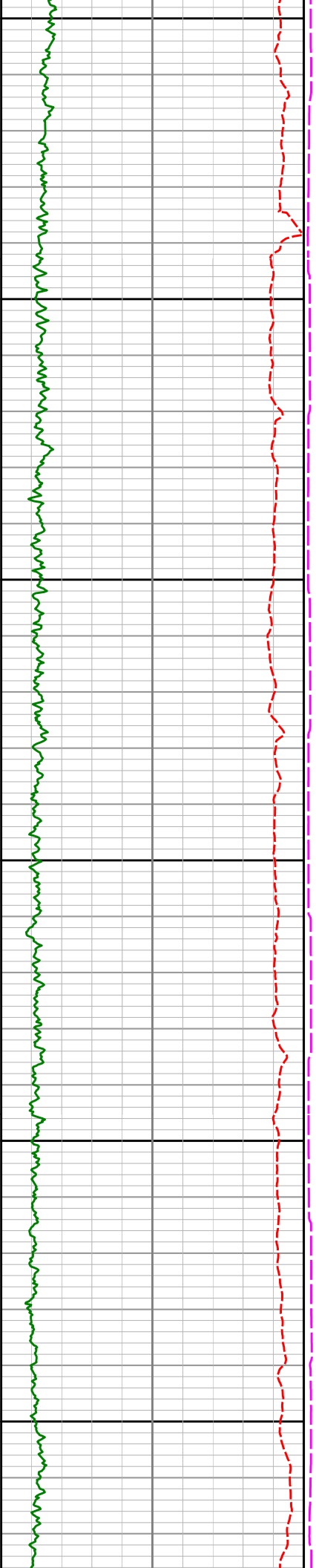
1375

1400

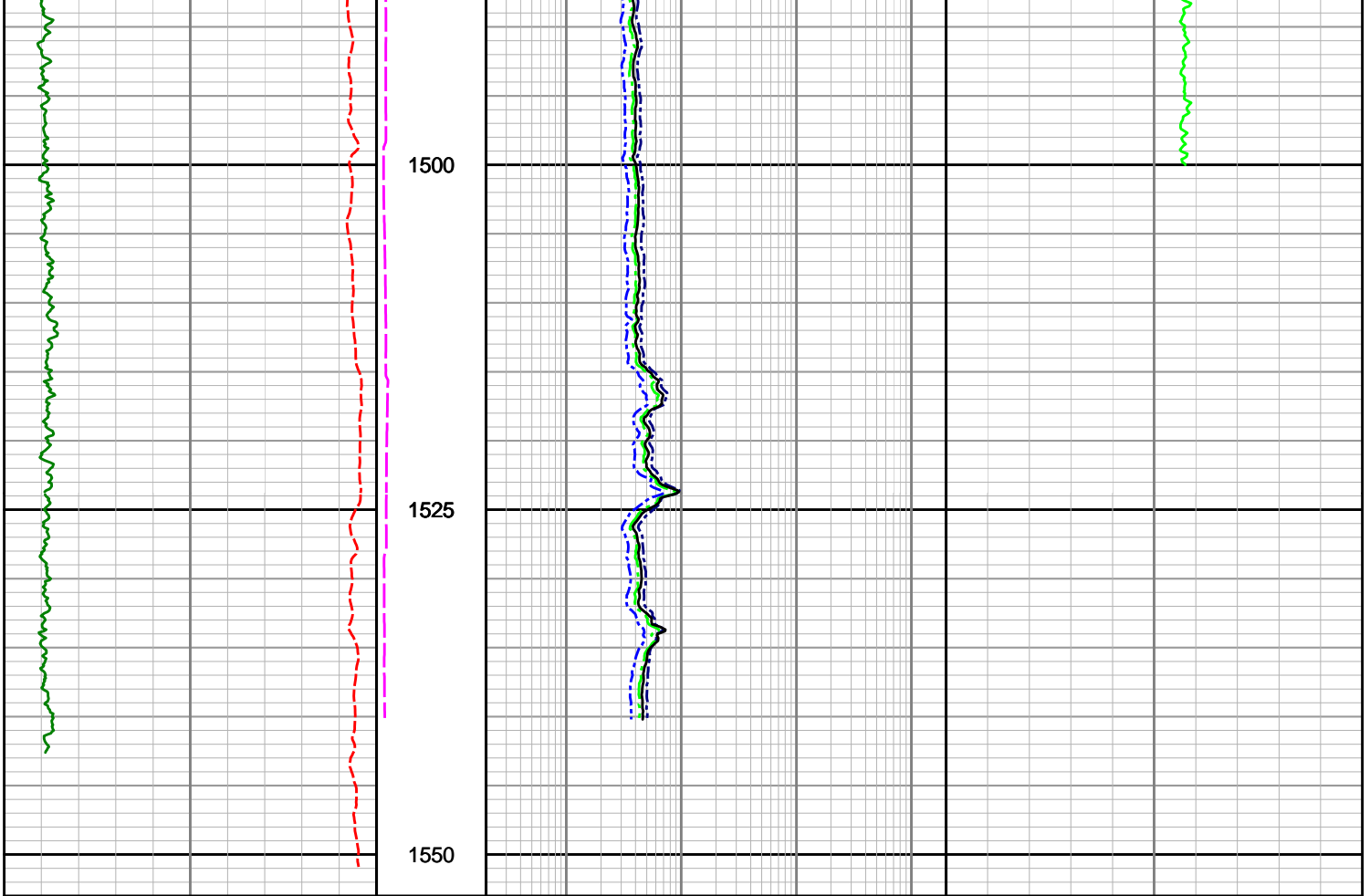
1425

1450

1475







<p><b>Gamma Ray (SGRC)</b></p> <p>0 200</p> <p>API</p>	<p>Depth MD</p> <p>1 : 500</p>	<p><b>Extra Shallow Res (SEXP)</b></p> <p>0.2 2K</p> <p>ohmm</p>	<p><b>Compressional Slowness (DTCP)</b></p> <p>140 40</p> <p>deg C</p>
<p><b>Rate of Penetration (SROP)</b></p> <p>500 0 0 10</p> <p>m/hr</p>	<p>SFXE</p> <p>hours</p>	<p><b>Shallow Phase Res (SESP)</b></p> <p>0.2 2K</p> <p>ohmm</p>	
		<p><b>Medium Phase Res (SEMP)</b></p> <p>0.2 2K</p> <p>ohmm</p>	
		<p><b>Deep Phase Res (SEDP)</b></p> <p>0.2 2K</p> <p>ohmm</p>	