

Madfish-1 EcoScope Service 200MD RT

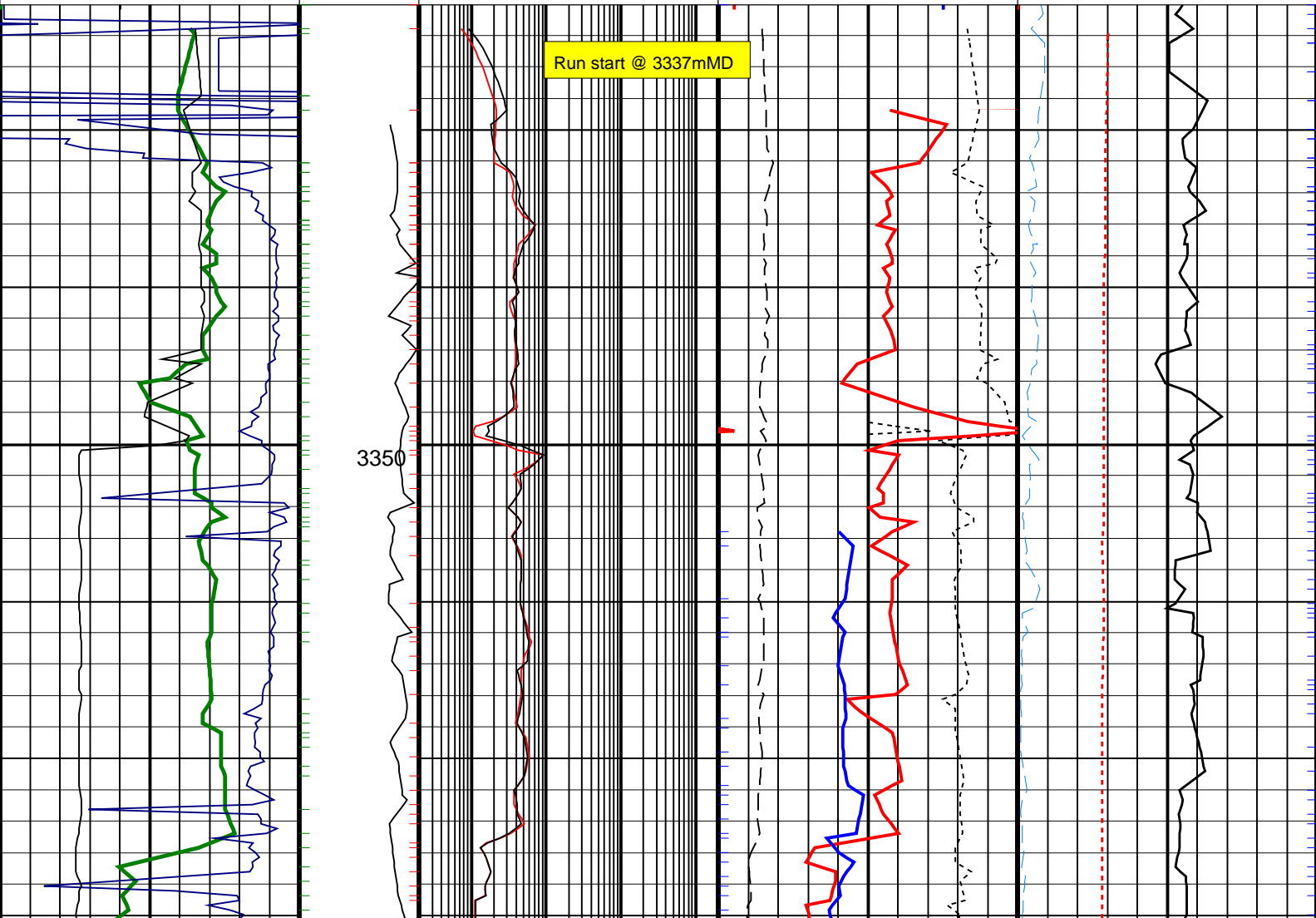
Format: Nero-2 ST1 Ecoscope Service – sonicVISIO Vertical Scale: 1:200 Graphics File Created: 07-Dec-2008 07:44

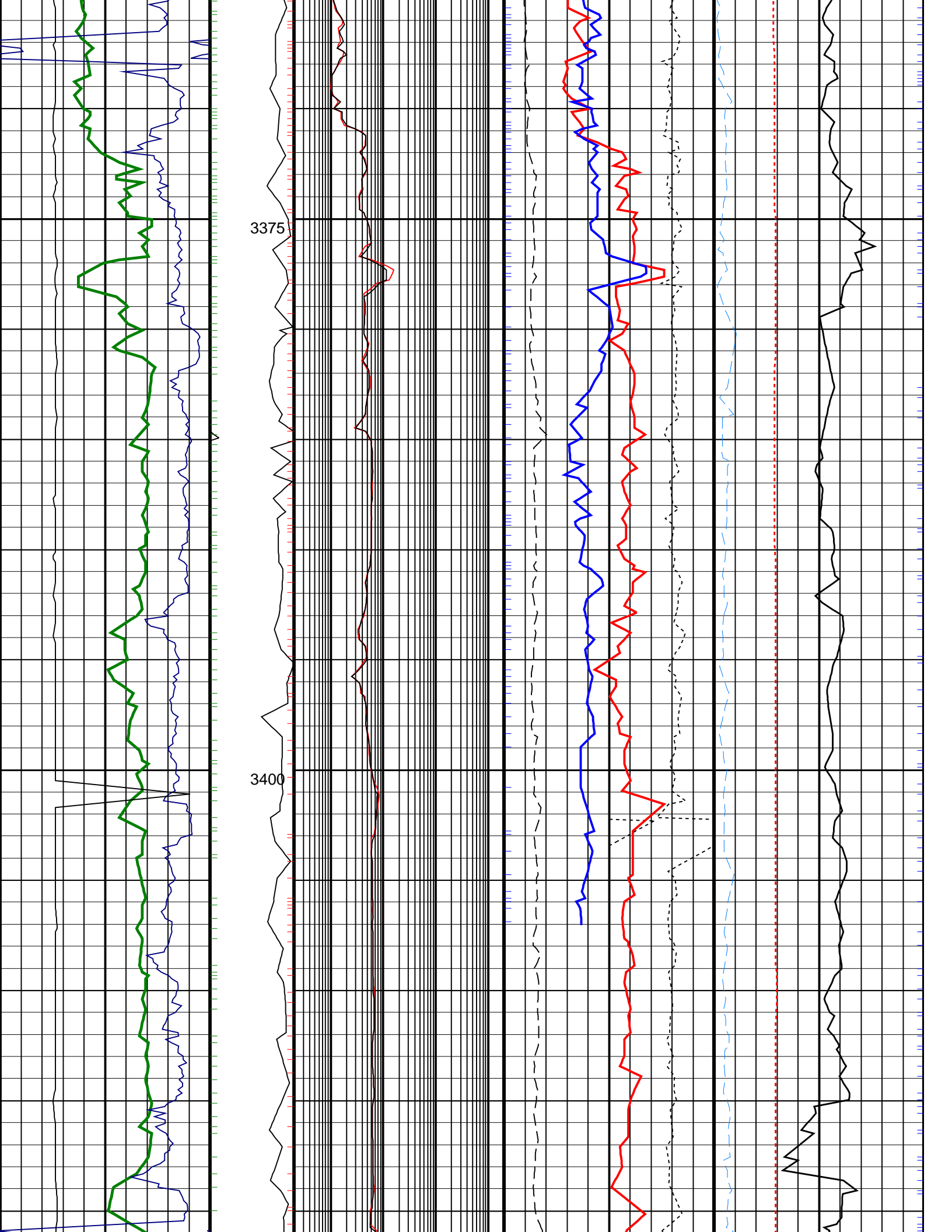
PIP SUMMARY

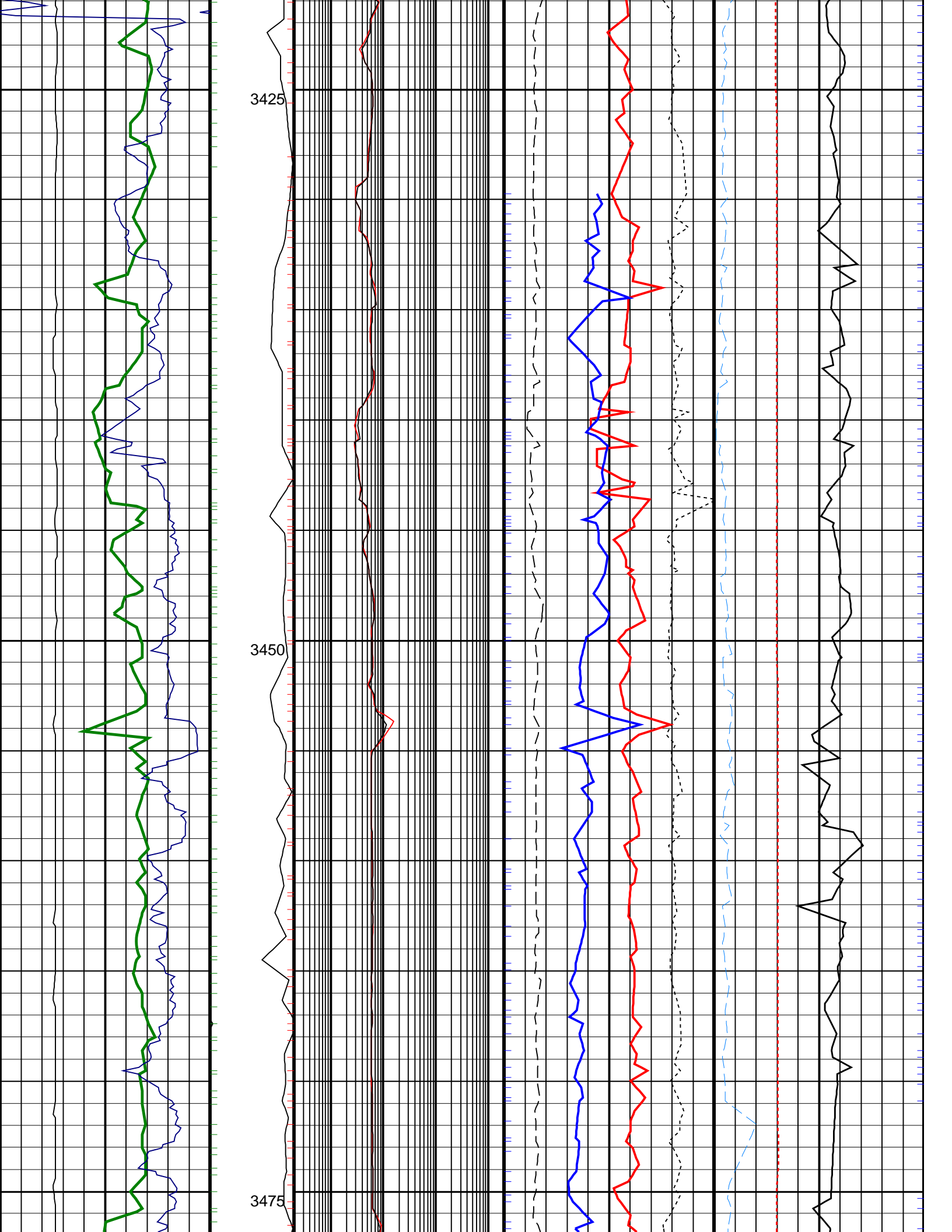
ISONIC Samples +

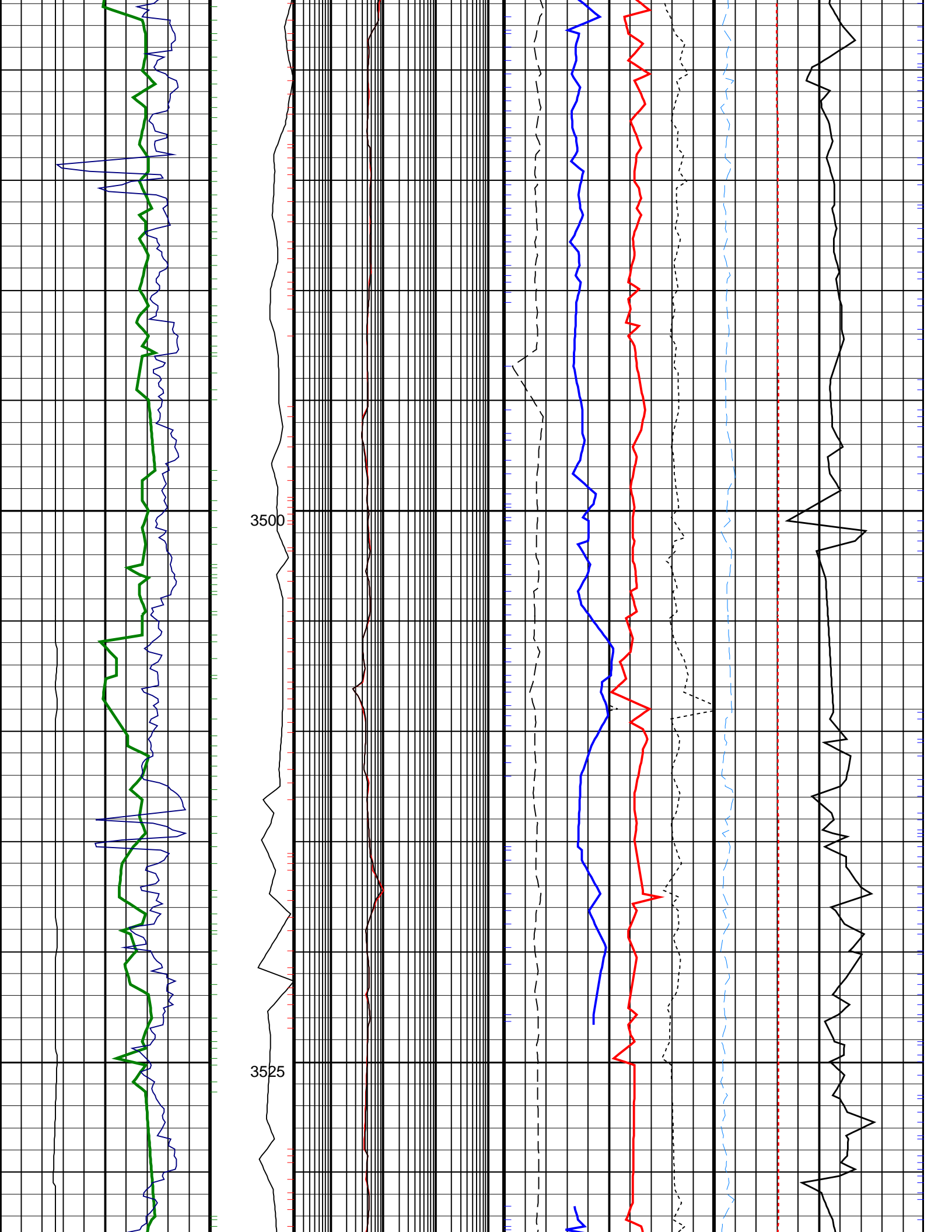
- + Gamma Ray Samples
- + Resistivity Samples
- + Neutron Samples

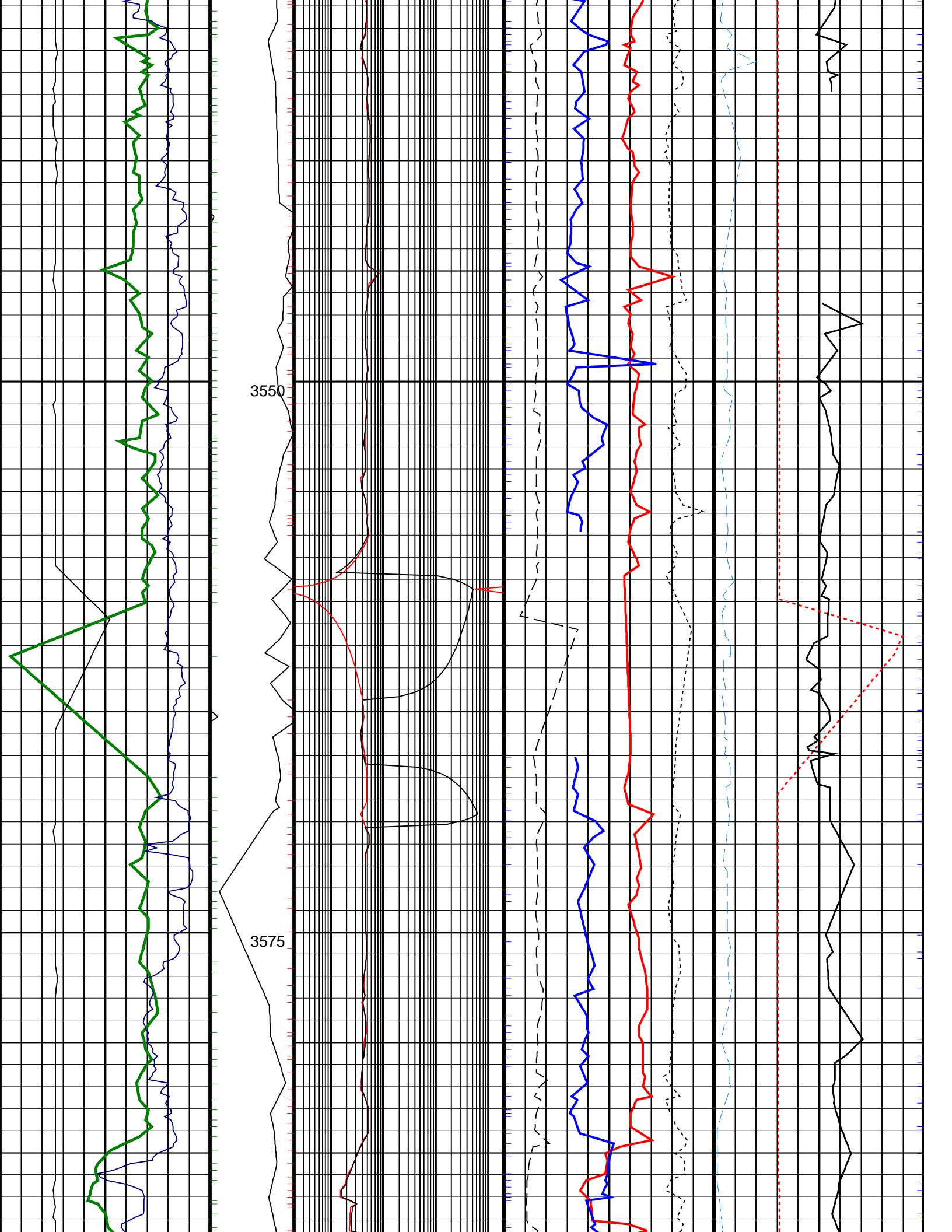
Gamma Ray, Average, Real-Time, Computed Downhole (GRMA_DH_ECO_RT) 0 (GAPI) 200				Thermal Neutron Porosity, Average, Real-Time (TNPH_ECO_RT) 0.45 (V/V) -0.15		Delta-T Compressional, Real Time (DTCO_RT) 140 (US/F) 40	
Ultrasonic Caliper, Average Diameter, Real-Time, Computed Downhole (UCAV_DH_ECO_RT) 6 (IN) 16		Eco Uncorrected Phase Shift Resistivity 40 inch at 2MHz, Real-Time (P40H_UNC_DH_ECO_RT) 0.2 (OHMM) 2000		Photoelectric Factor, Bottom, Real-Time, Computed Downhole (PEB_DH_ECO_RT) 0 (----) 10	Bulk Density Correction, Bottom, Real-Time Computed Downhole (DRHB_DH_ECO_RT) (G/C3) -0.25 0.25	Coherence at Compressional Peak, Real-Time (CHCO_RT) 1 (----) -4	
ROP*5 (ROP5) 200 (M/HR) 0	MWD Collar RPM (CRPM_RT) (RPM) 0 200	Eco Uncorrected Phase Shift Resistivity 16 inch at 2MHz, Real-Time (P16H_UNC_DH_ECO_RT) 0.2 (OHMM) 2000		Bulk Density, Bottom, Real-Time, Computed Downhole (ROBB_DH_ECO_RT) (G/C3) 1.95 2.95		Downhole Annulus Temperature, Real Time, Computed Downhole (DHAT_DH_ECO_RT) (DEGC) 0 200	

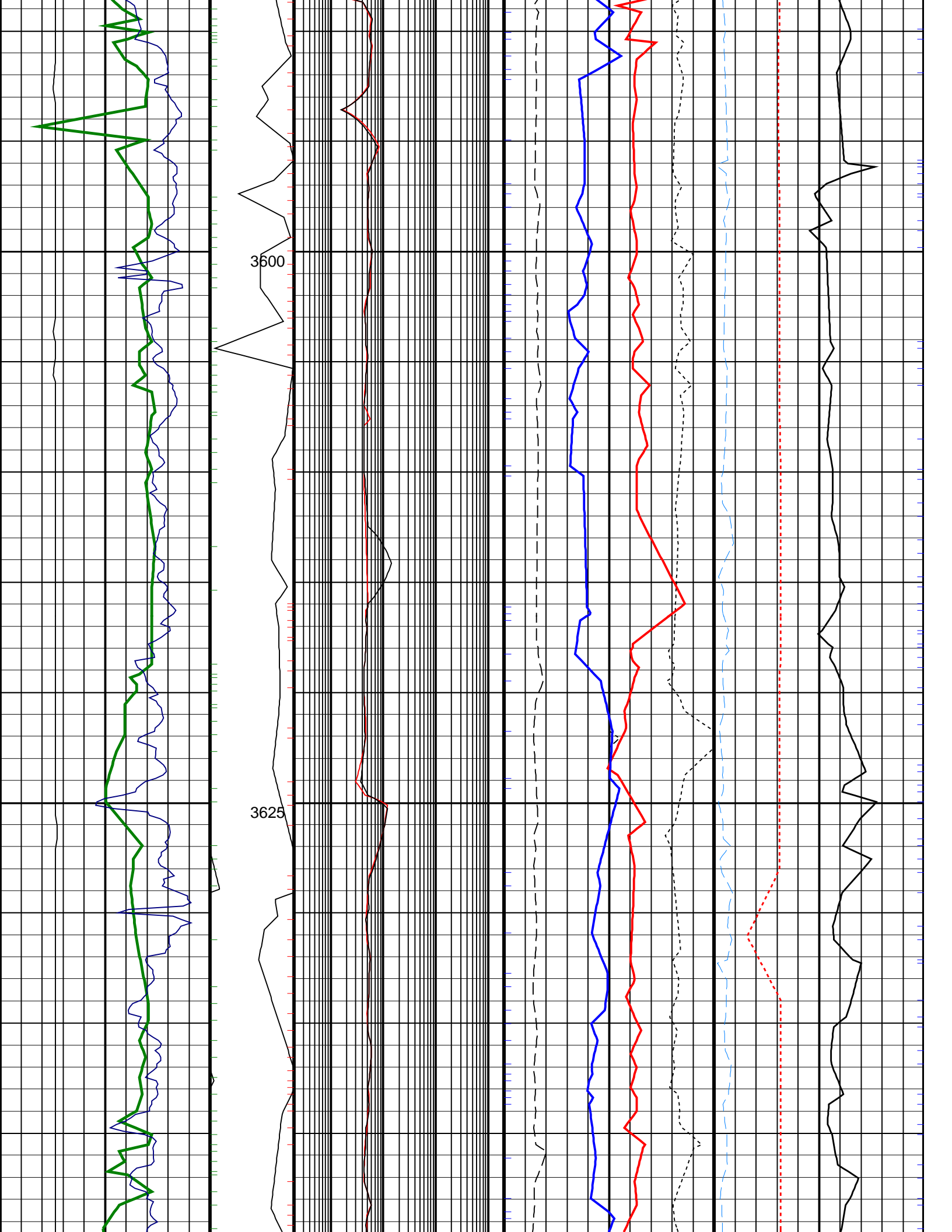


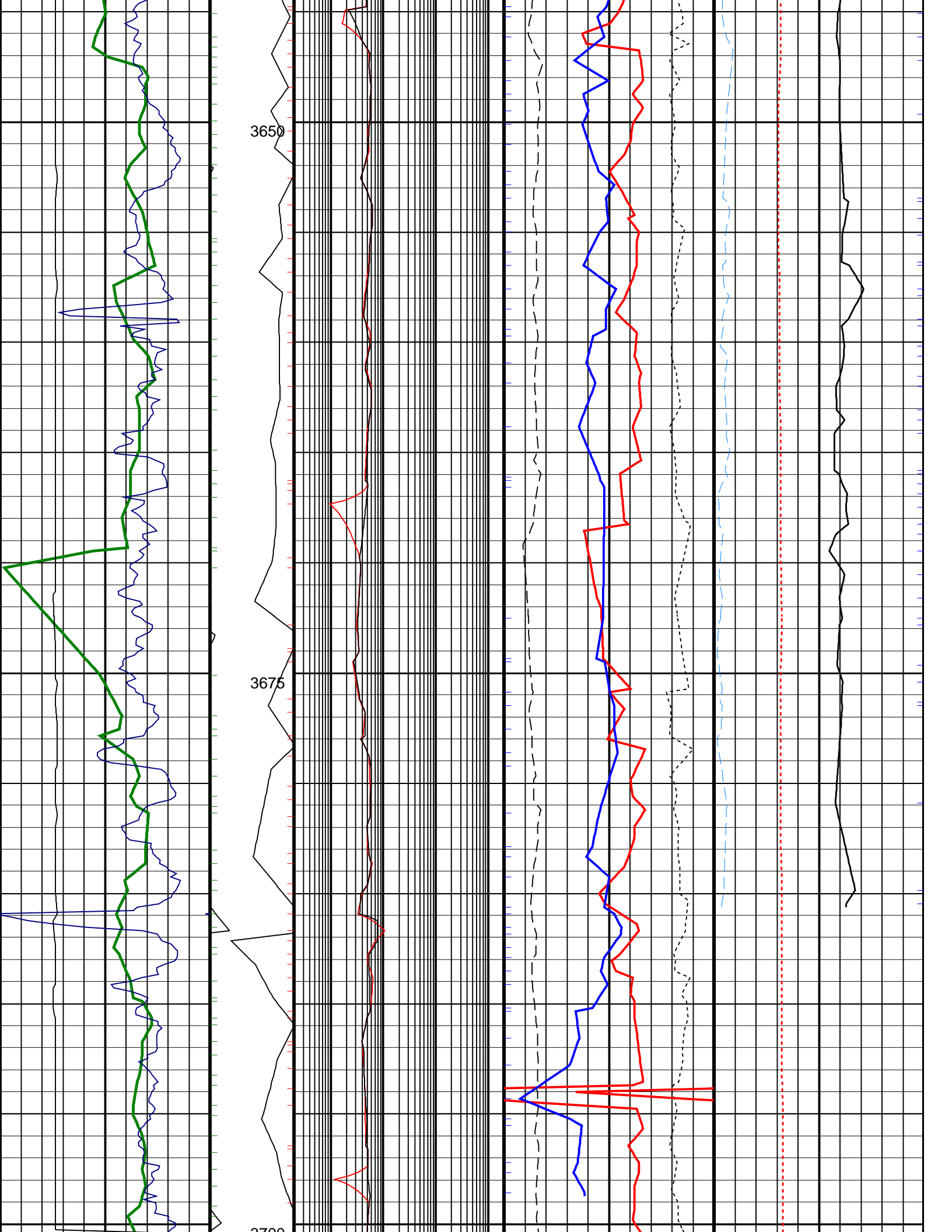


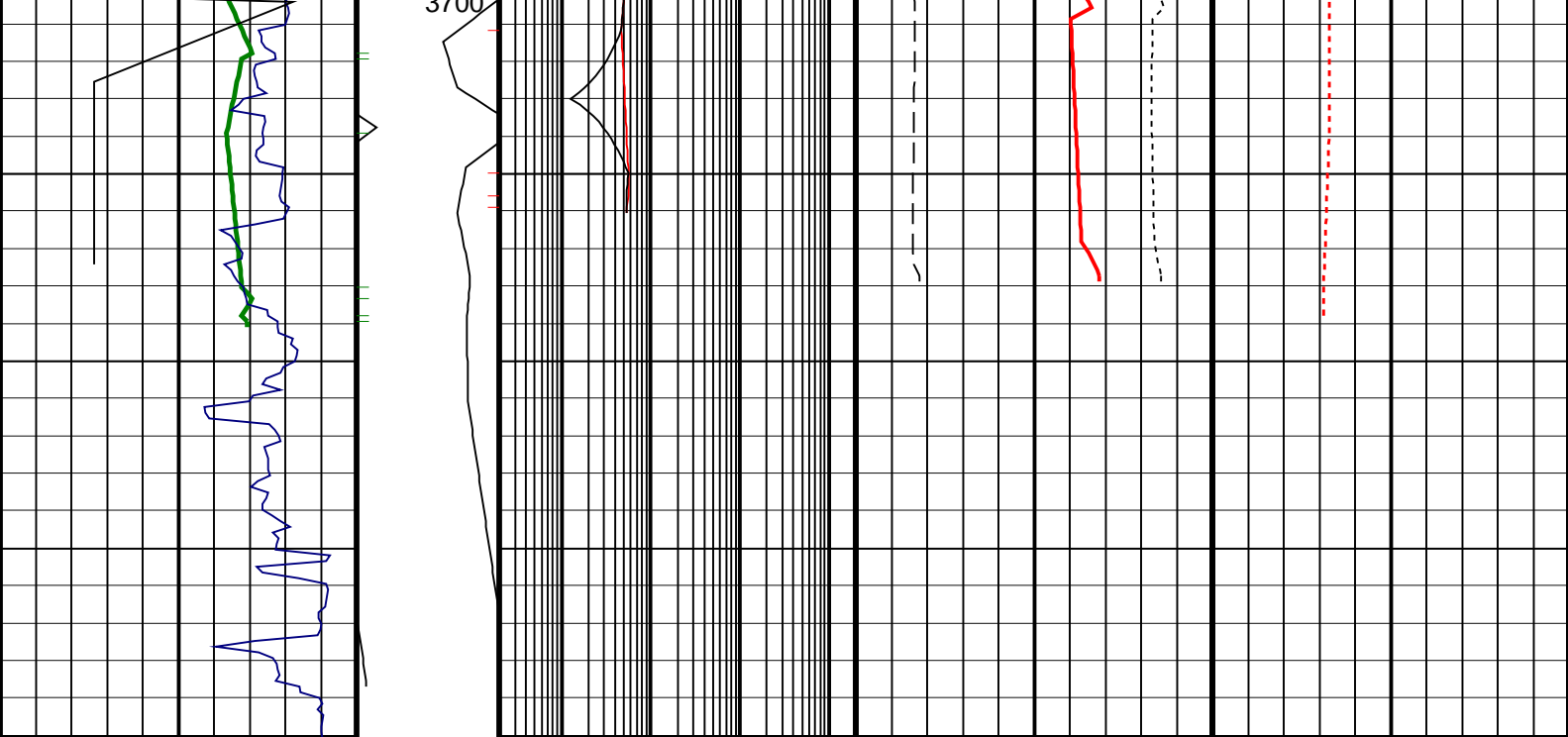












ROP*5 (ROP5) (M/HR)	MWD Collar RPM (CRPM_RT) (RPM)	Eco Uncorrected Phase Shift Resistivity 16 inch at 2MHz, Real-Time (P16H_UNC_DH_ ECO_RT)		Bulk Density, Bottom, Real-Time, Computed Downhole (ROBB_DH_ECO_ RT)		Downhole Annulus Temperature, Real Time, Computed Downhole (DHAT_ DH_ECO_RT)	
		0.2 (OHMM)	2000	1.95 (G/C3)	2.95	0 (DEGC)	200
Ultrasonic Caliper, Average Diameter, Real-Time, Computed Downhole (UCAV_ DH_ECO_RT)		Eco Uncorrected Phase Shift Resistivity 40 inch at 2MHz, Real-Time (P40H_UNC_DH_ ECO_RT)		Photoelectric Factor, Bottom, Real-Time, Computed Downhole (PEB_DH_ ECO_RT)	Bulk Density Correction, Bottom, Real-Time Computed Downhole (DRHB_DH_ ECO_RT)	Coherence at Compressional Peak, Real-Time (CHCO_RT)	
		0.2 (OHMM)	2000	0 (----	10 (G/C3)	1 (----	-4
Gamma Ray, Average, Real-Time, Computed Downhole (GRMA_DH_ECO_ RT)				Thermal Neutron Porosity, Average, Real-Time (TNPH_ ECO_RT)		Delta-T Compressional, Real Time (DTCO_RT)	
				0.45 (V/V)	-0.15	140 (US/F)	40

PIP SUMMARY

Gamma Ray Samples
Resistivity Samples
Neutron Samples

ISONIC Samples

IDEAL Version: ID13_0C_08
IDF