

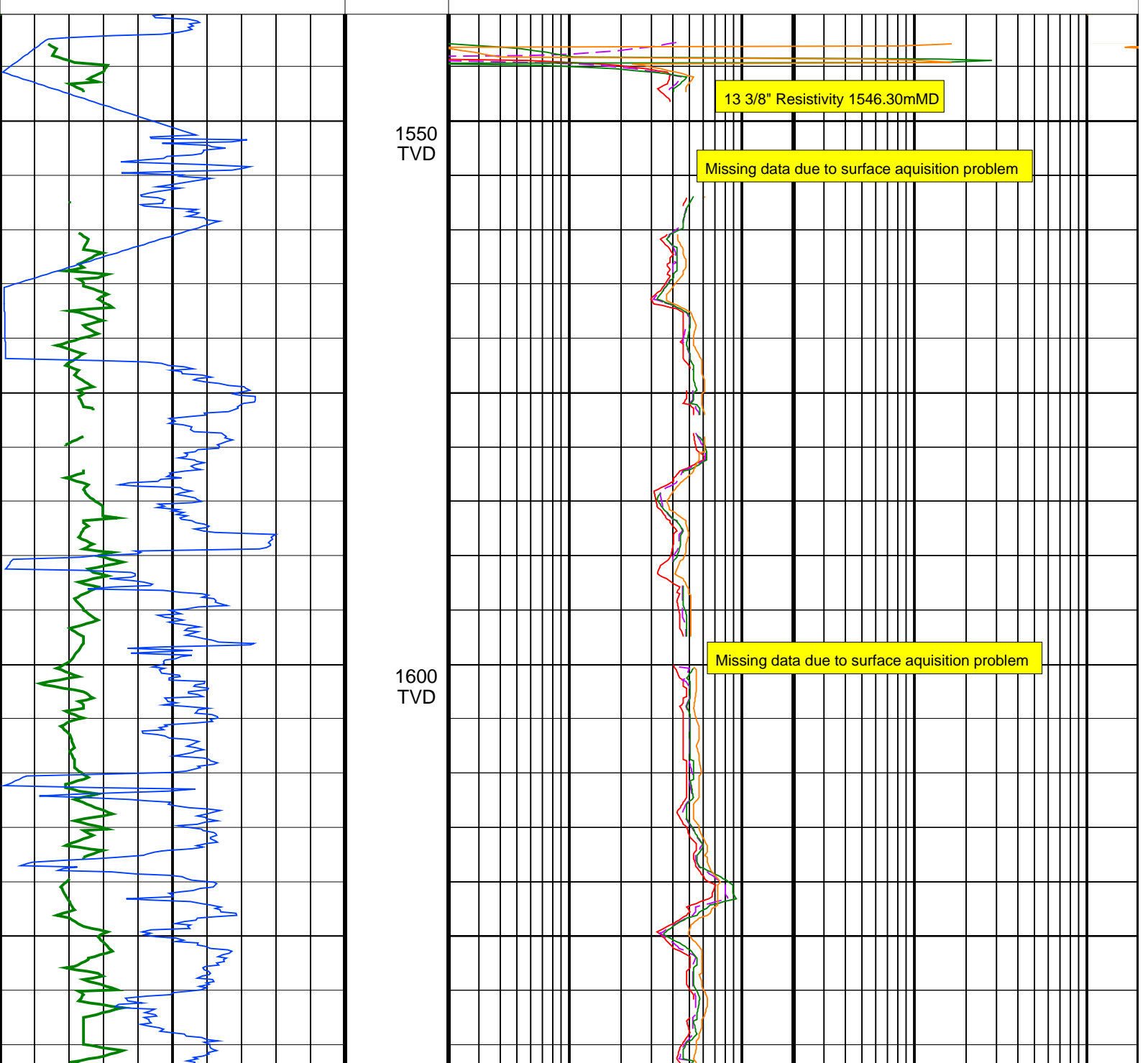
Mad Fish arcVISION Resistivity 500TVD RT

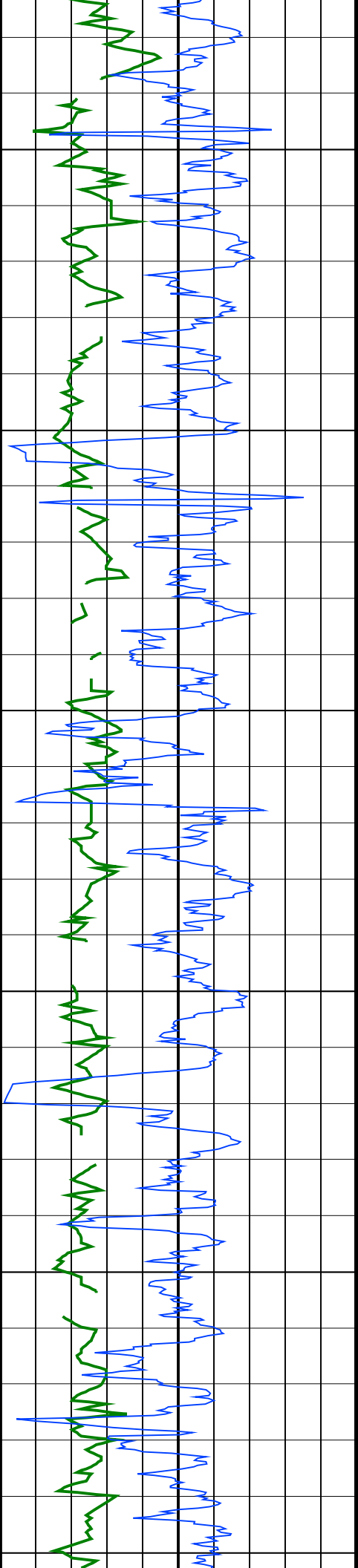
ARC9A-AA id13_0c_02
 SWD9-AA id13_0c_02
 ADN id13_0c_02

MWD_10 id13_0c_02
 RAB id13_0c_02

Format: VISION Resistivity 500TVD RT Vertical Scale: 1:500 Graphics File Created: 05-Dec-2008 04:20

	ARC BHCorr Attenuation Resistivity 40-in. at 2 MHz, Real-Time (A40H_RT)	2000
0.2	(OHMM)	
ARC Gamma Ray, Real-Time (ARC_GR_RT)	ARC BHCorr Phase-Shift Resistivity 40-in. at 2 MHz, Real-Time (P40H_RT)	2000
0 (GAPI)	(OHMM)	
ROP*5 (ROP5)	ARC BHCorr Phase-Shift Resistivity 28-in. at 2 MHz, Real-Time (P28H_RT)	2000
200 (M/HR)	(OHMM)	
0	ARC BHCorr Phase-Shift Resistivity 16-in. at 2 MHz, Real-Time (P16H_RT)	2000
	(OHMM)	

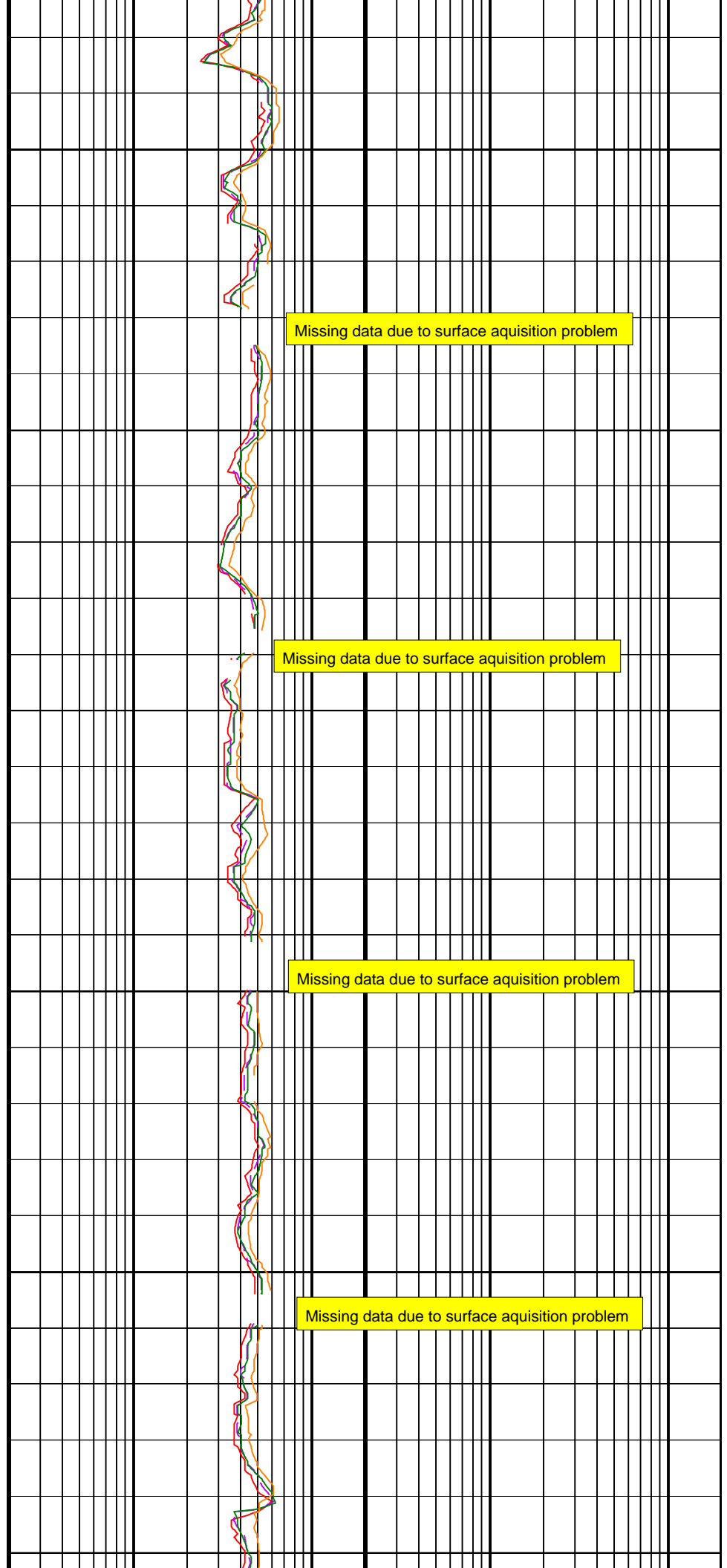




1650
TVD

1700
TVD

1750
TVD

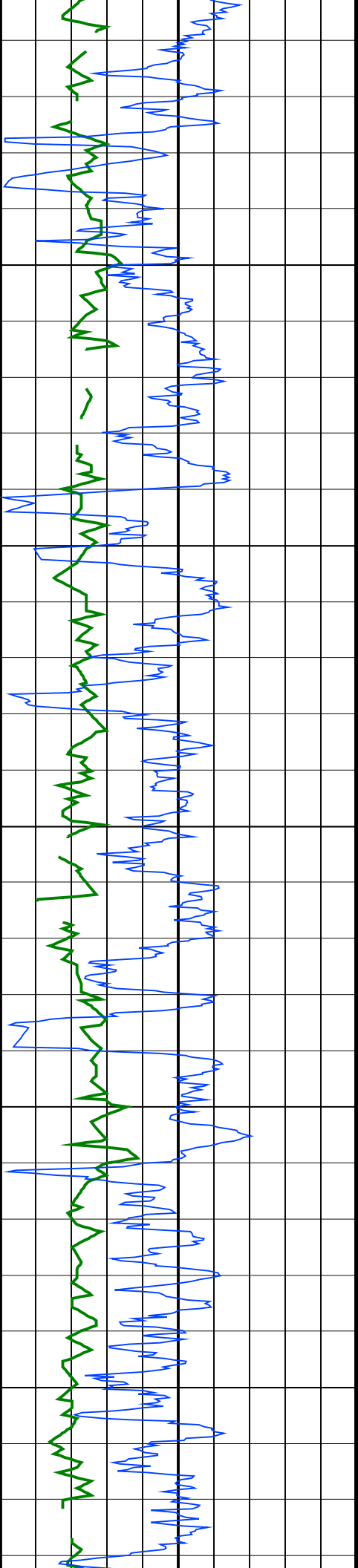


Missing data due to surface aquisition problem

Missing data due to surface aquisition problem

Missing data due to surface aquisition problem

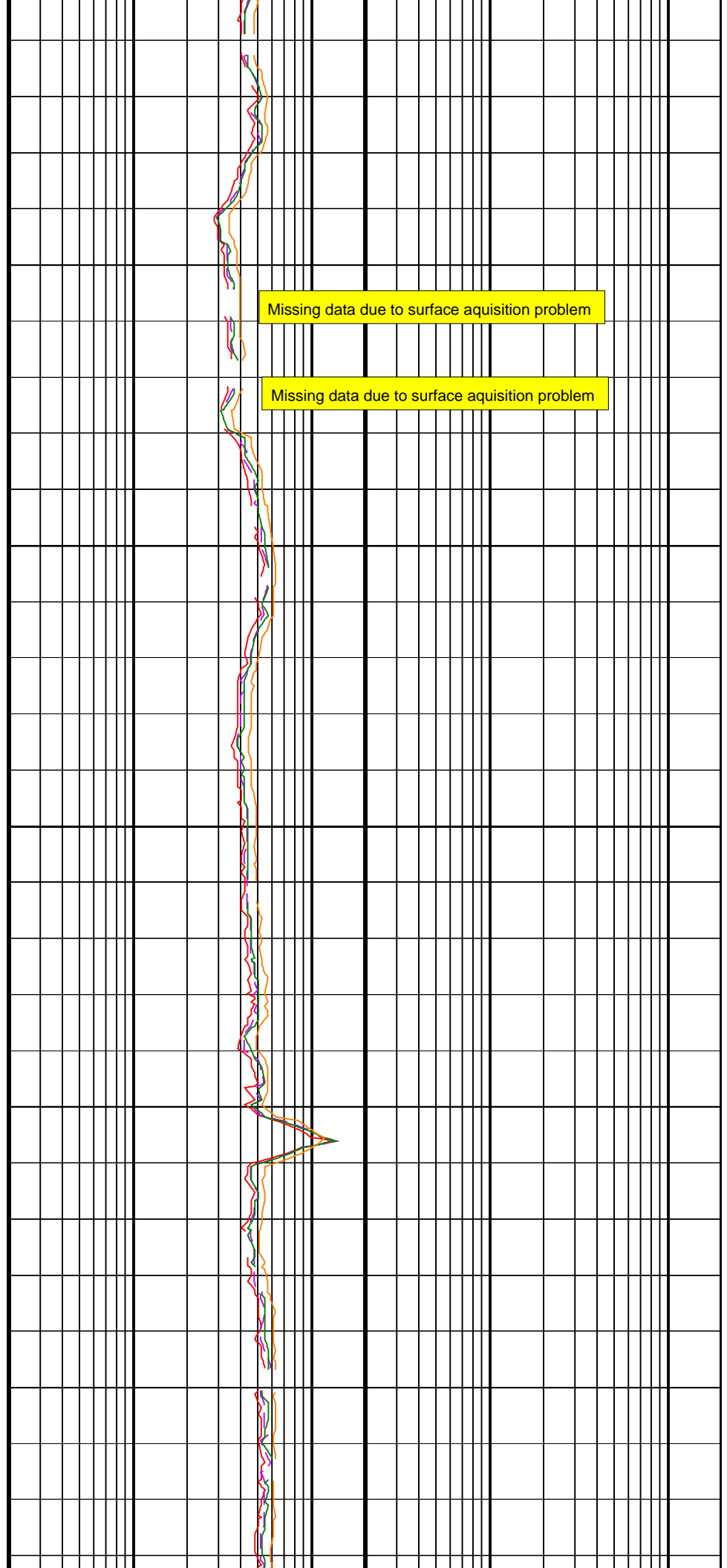
Missing data due to surface aquisition problem



1800
TVD

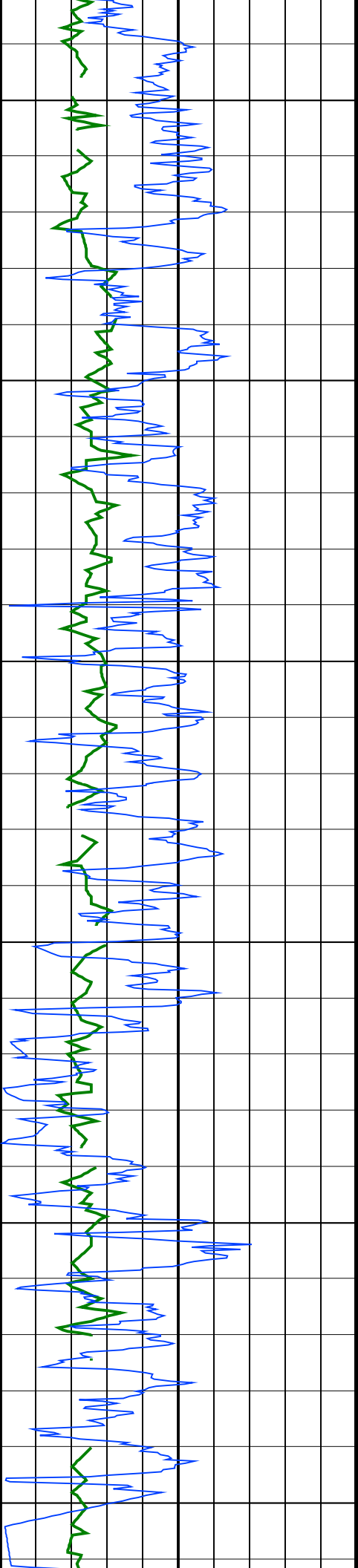
1850
TVD

1900
TVD



Missing data due to surface aquisition problem

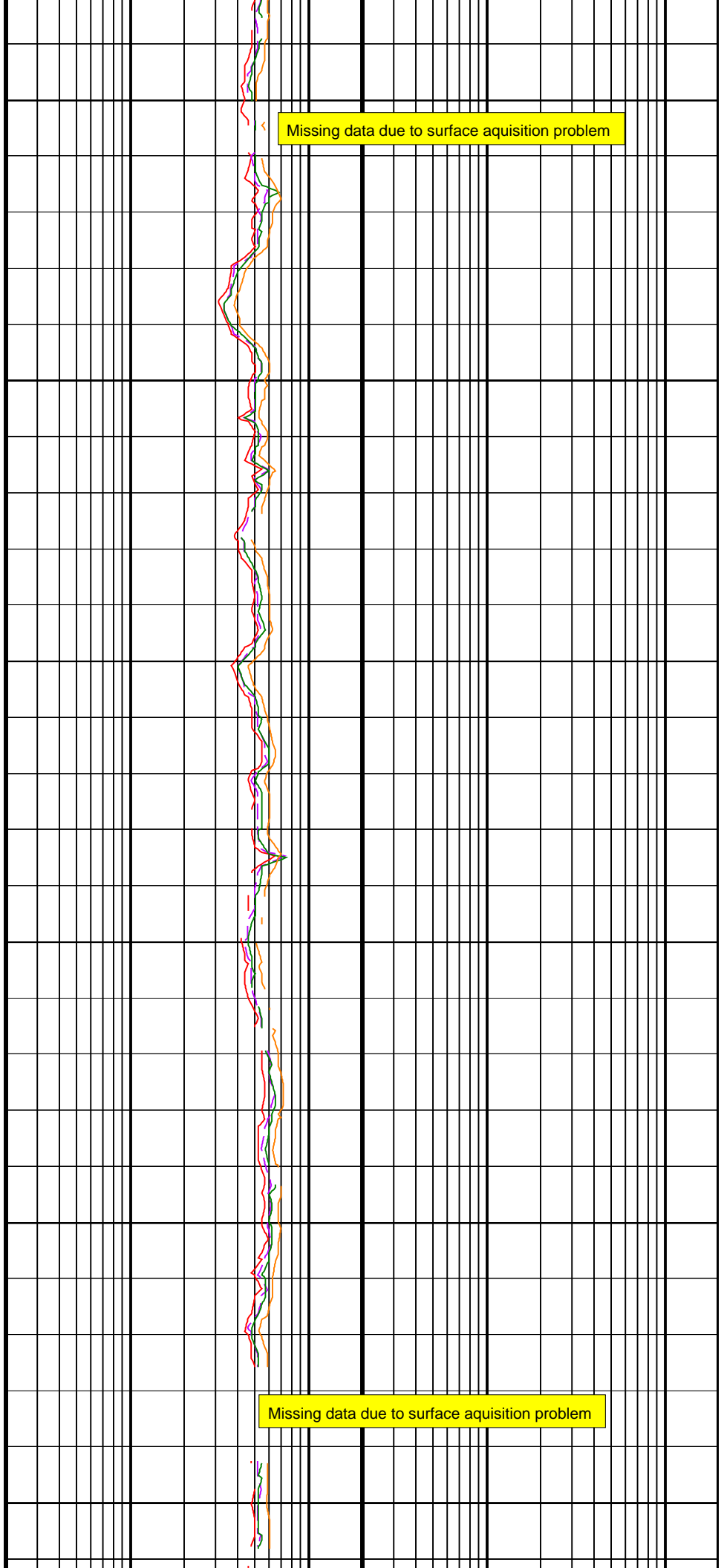
Missing data due to surface aquisition problem



1950
TVD

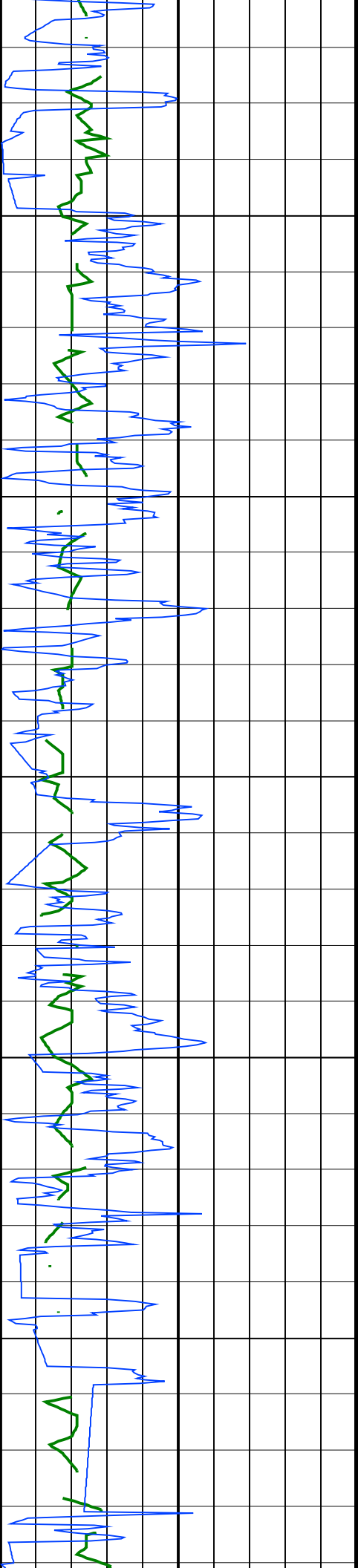
2000
TVD

2050
TVD



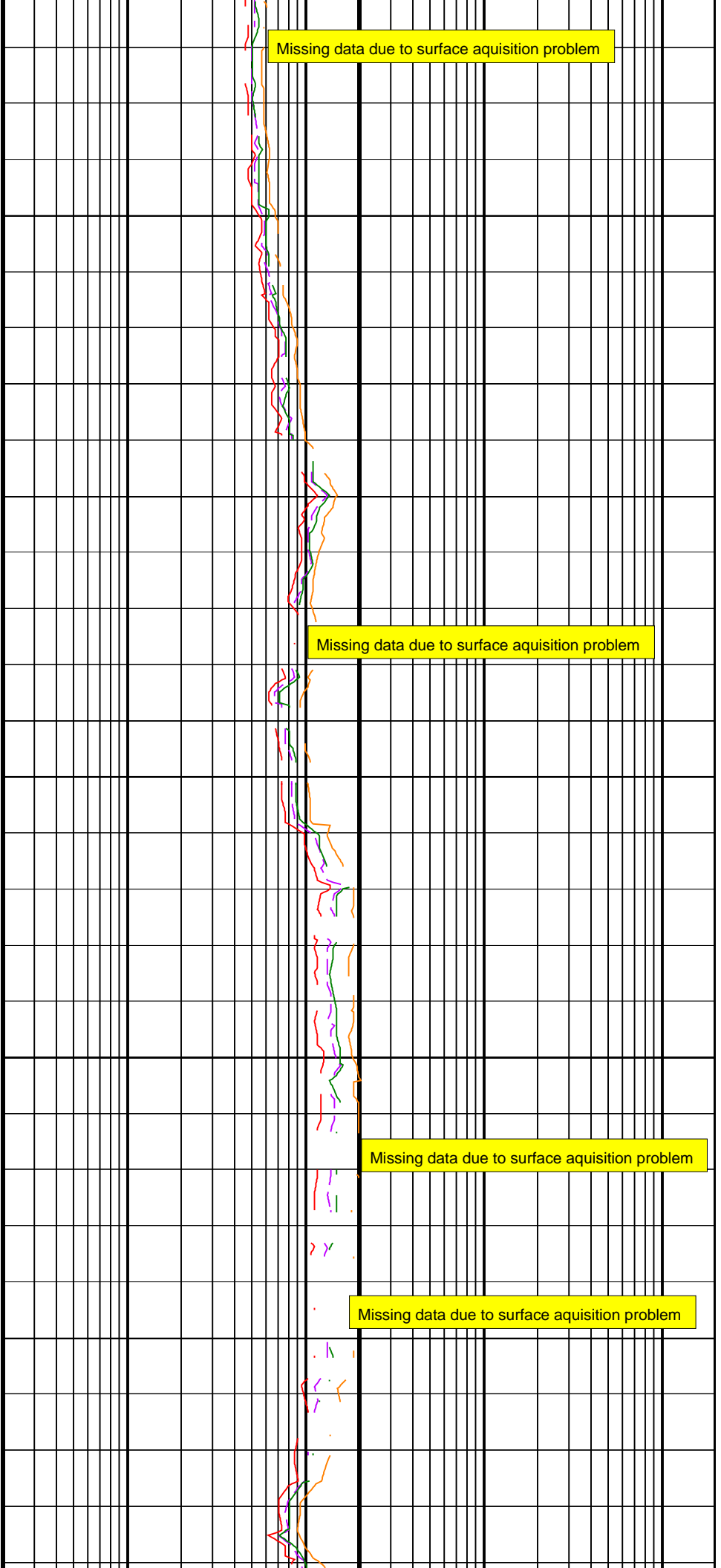
Missing data due to surface aquisition problem

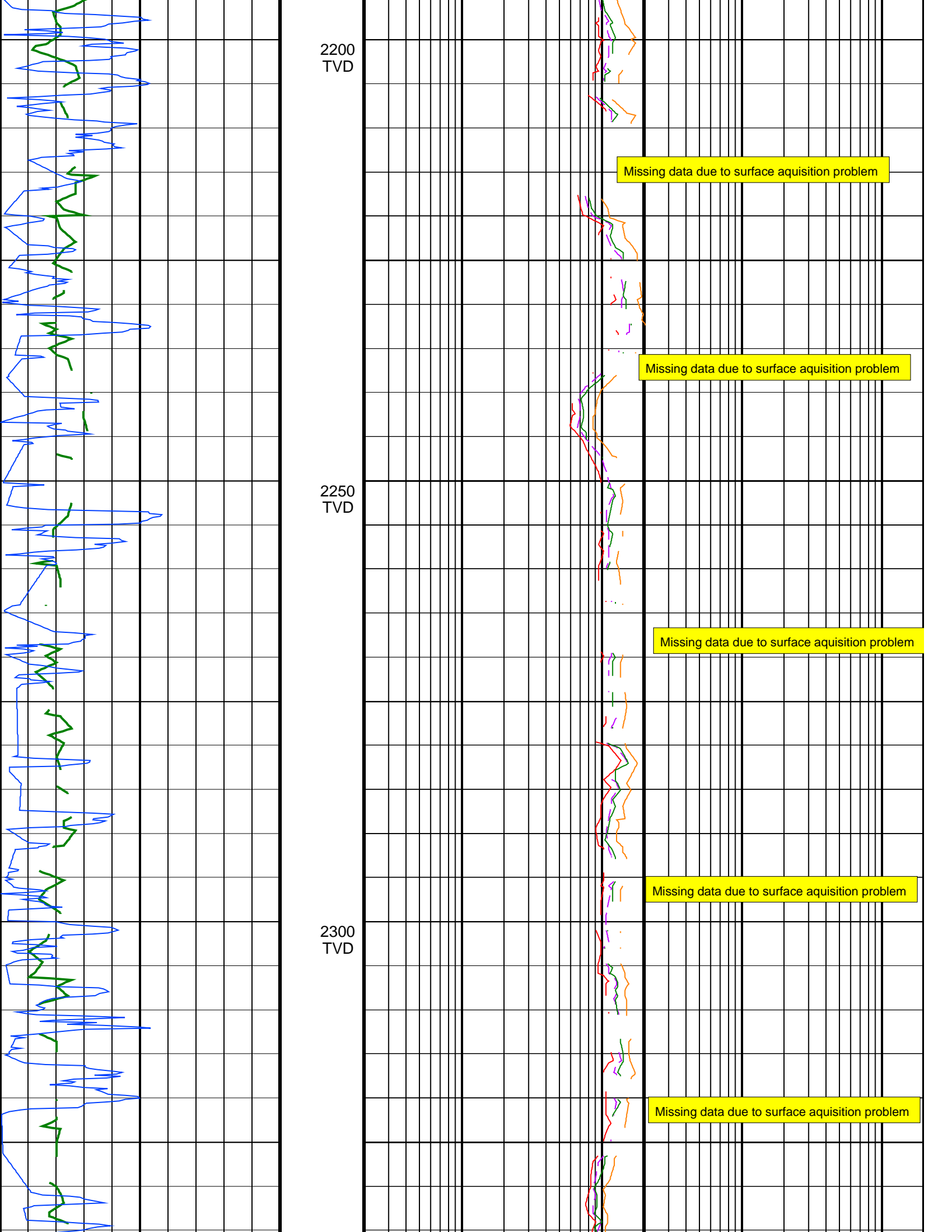
Missing data due to surface aquisition problem

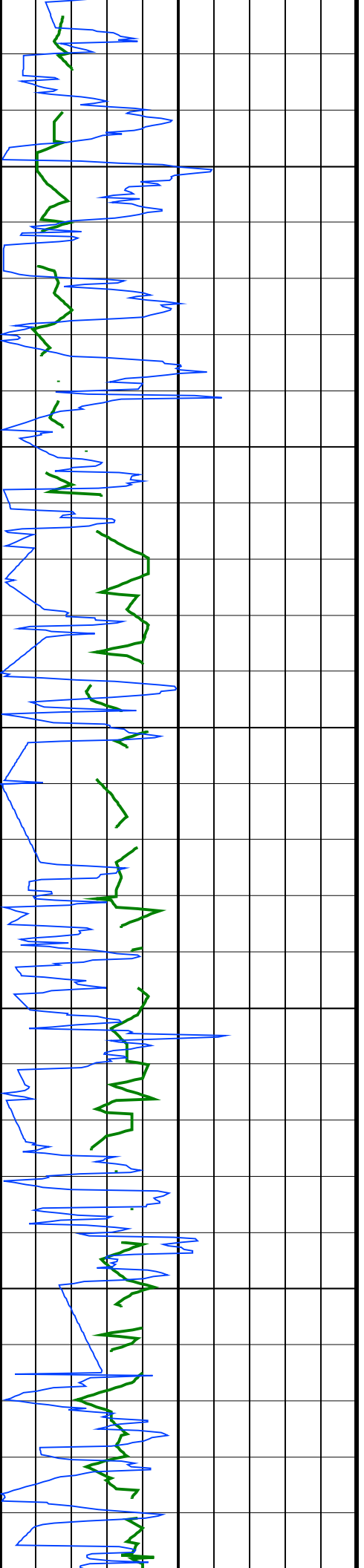


2100
TVD

2150
TVD



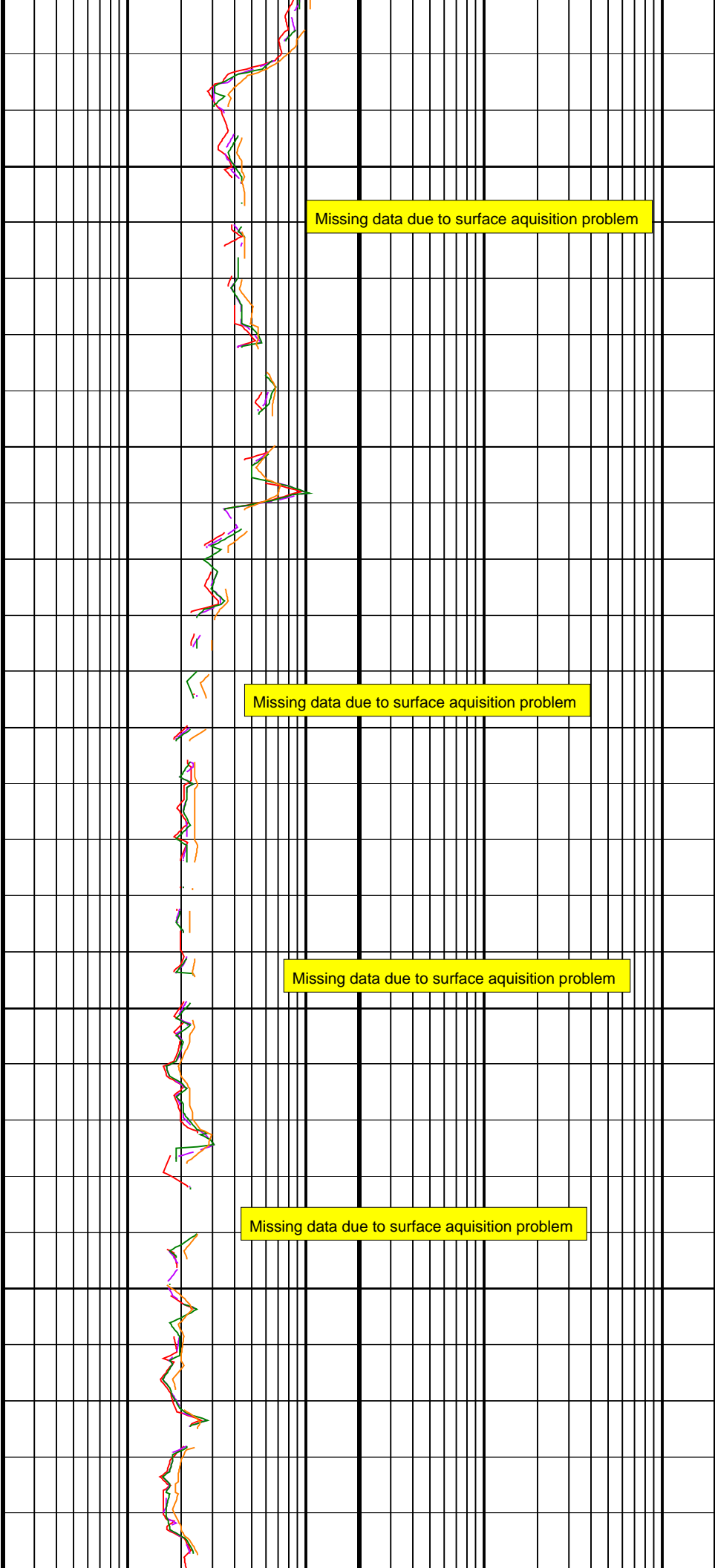




2350
TVD

2400
TVD

2450
TVD

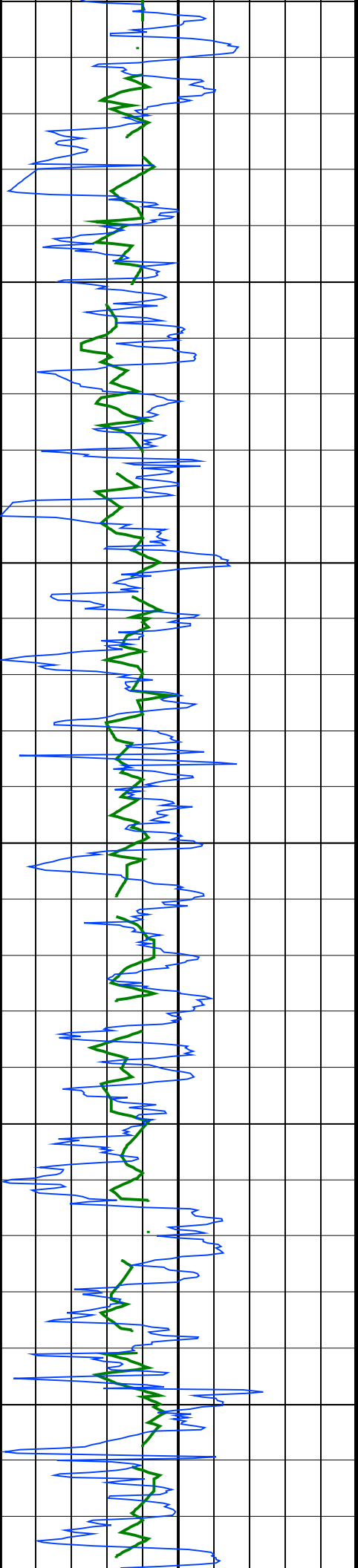


Missing data due to surface aquisition problem

Missing data due to surface aquisition problem

Missing data due to surface aquisition problem

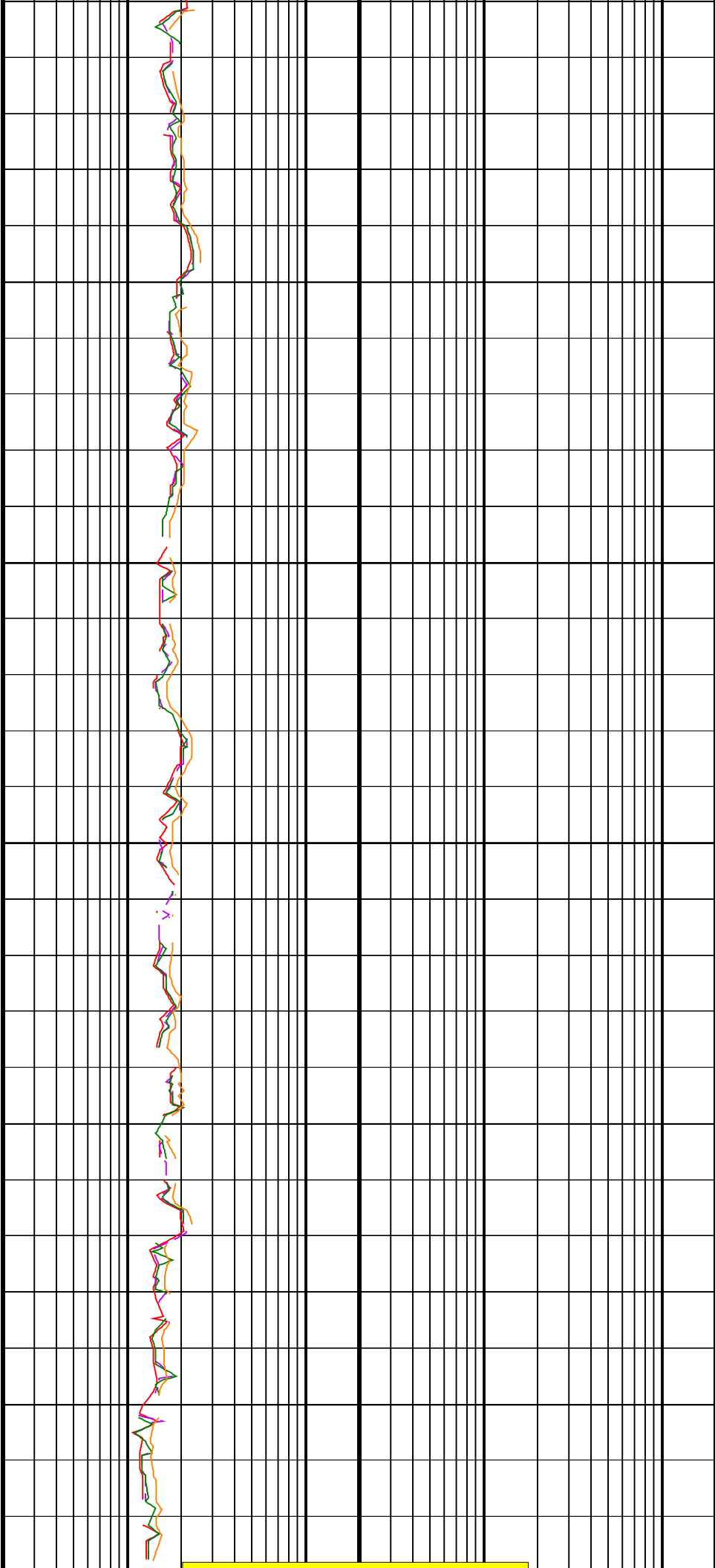
Missing data due to surface aquisition problem

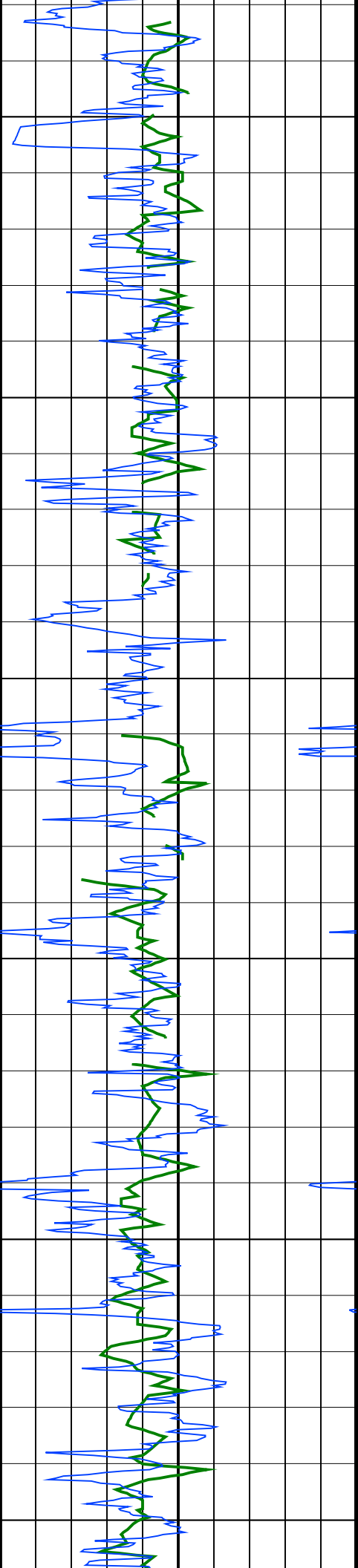


2500
TVD

2550
TVD

2600
TVD

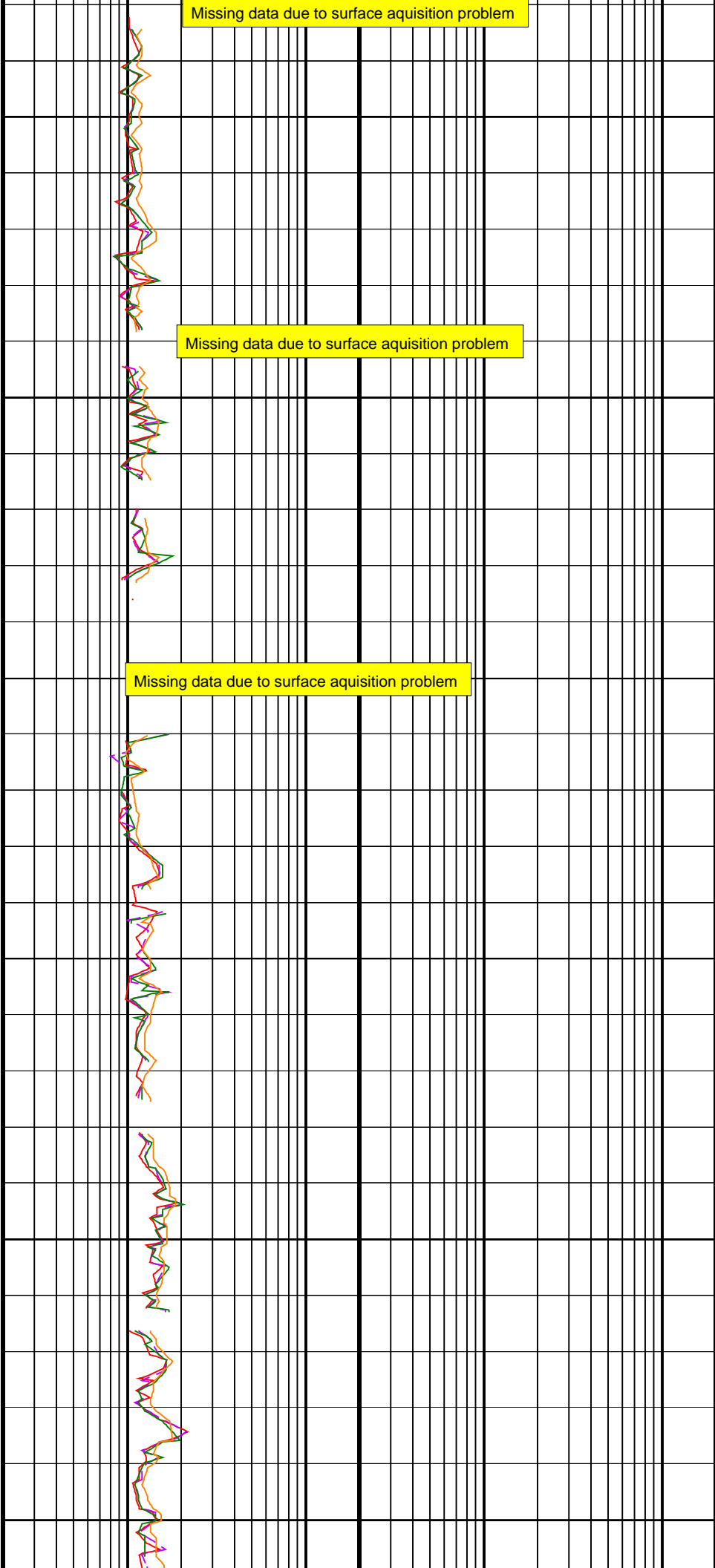




2650
TVD

2700
TVD

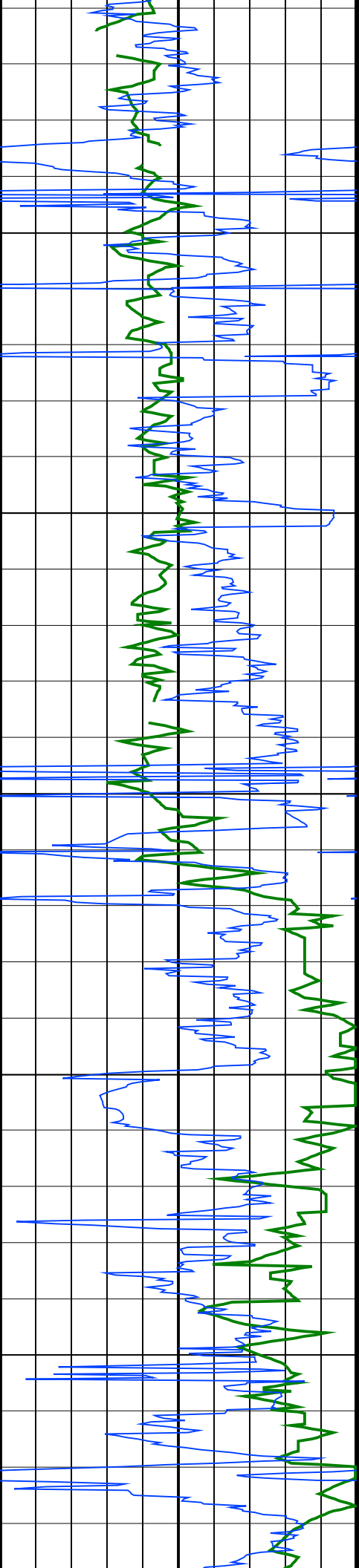
2750
TVD



Missing data due to surface aquisition problem

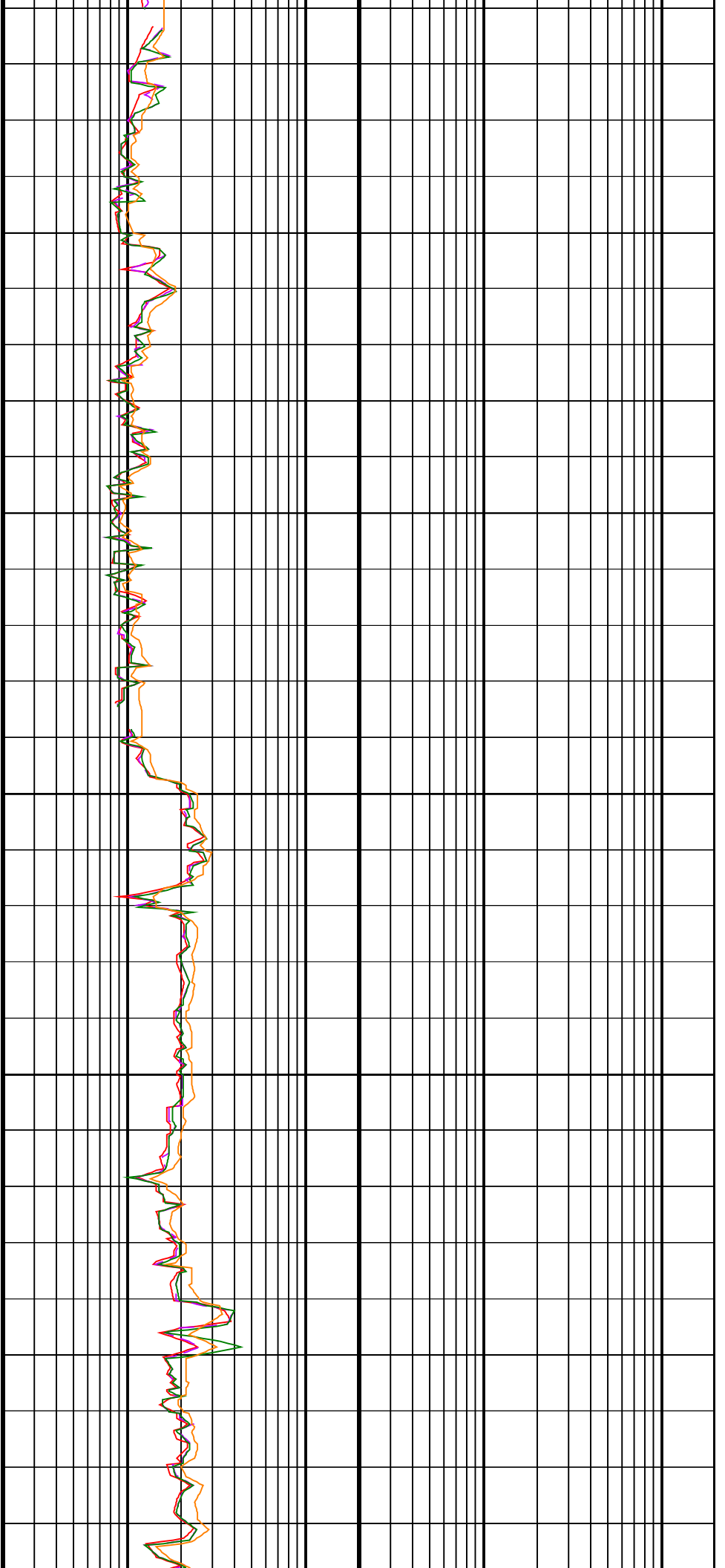
Missing data due to surface aquisition problem

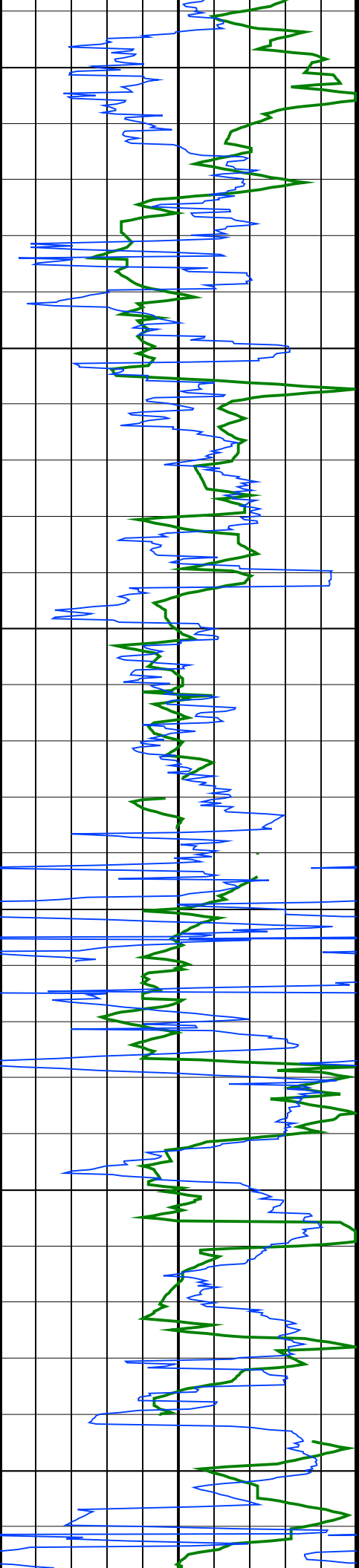
Missing data due to surface aquisition problem



2800
TVD

2850
TVD

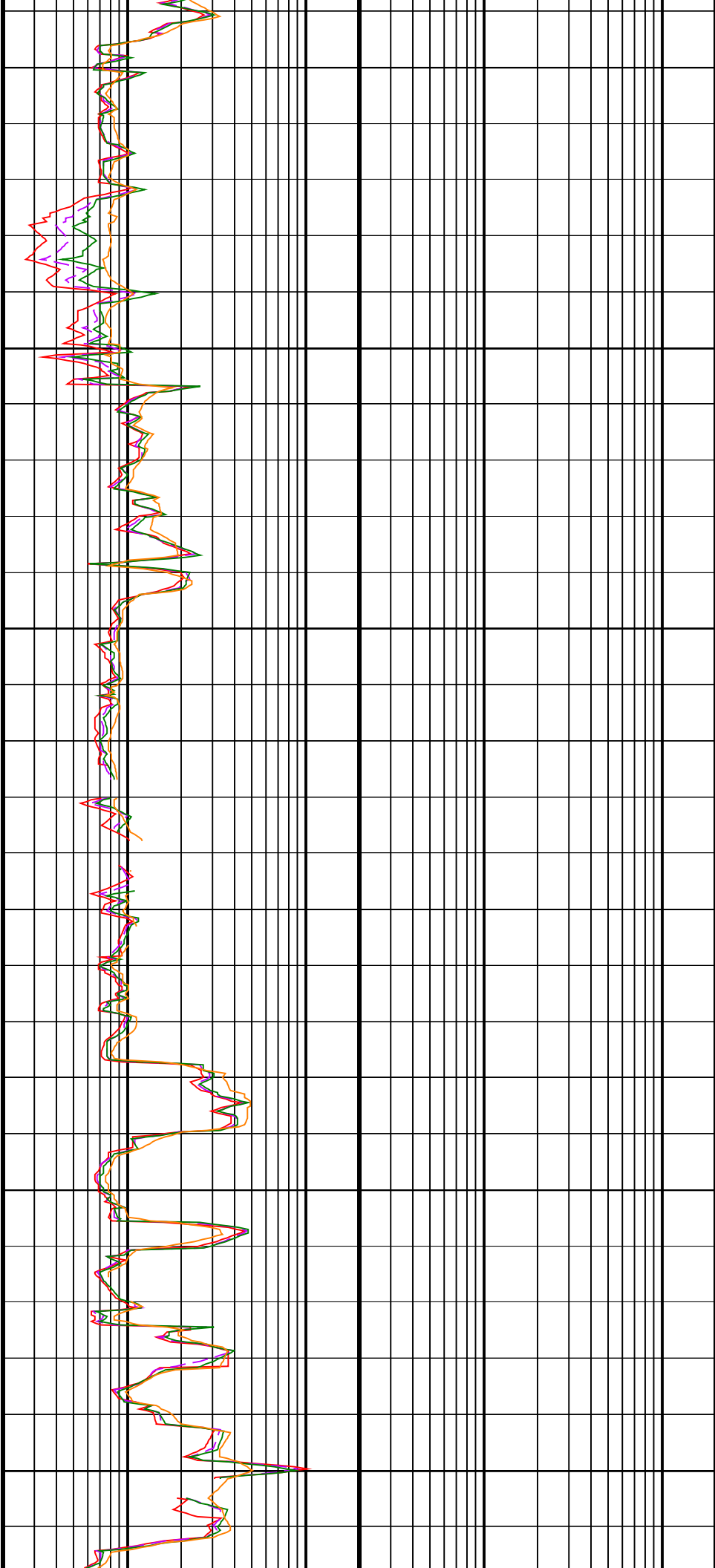


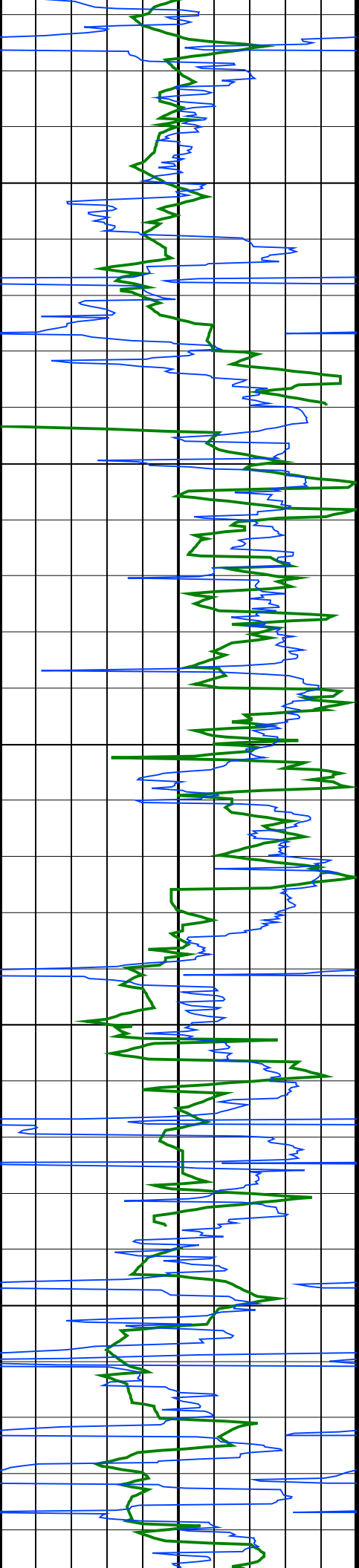


2900
TVD

2950
TVD

3000
TVD

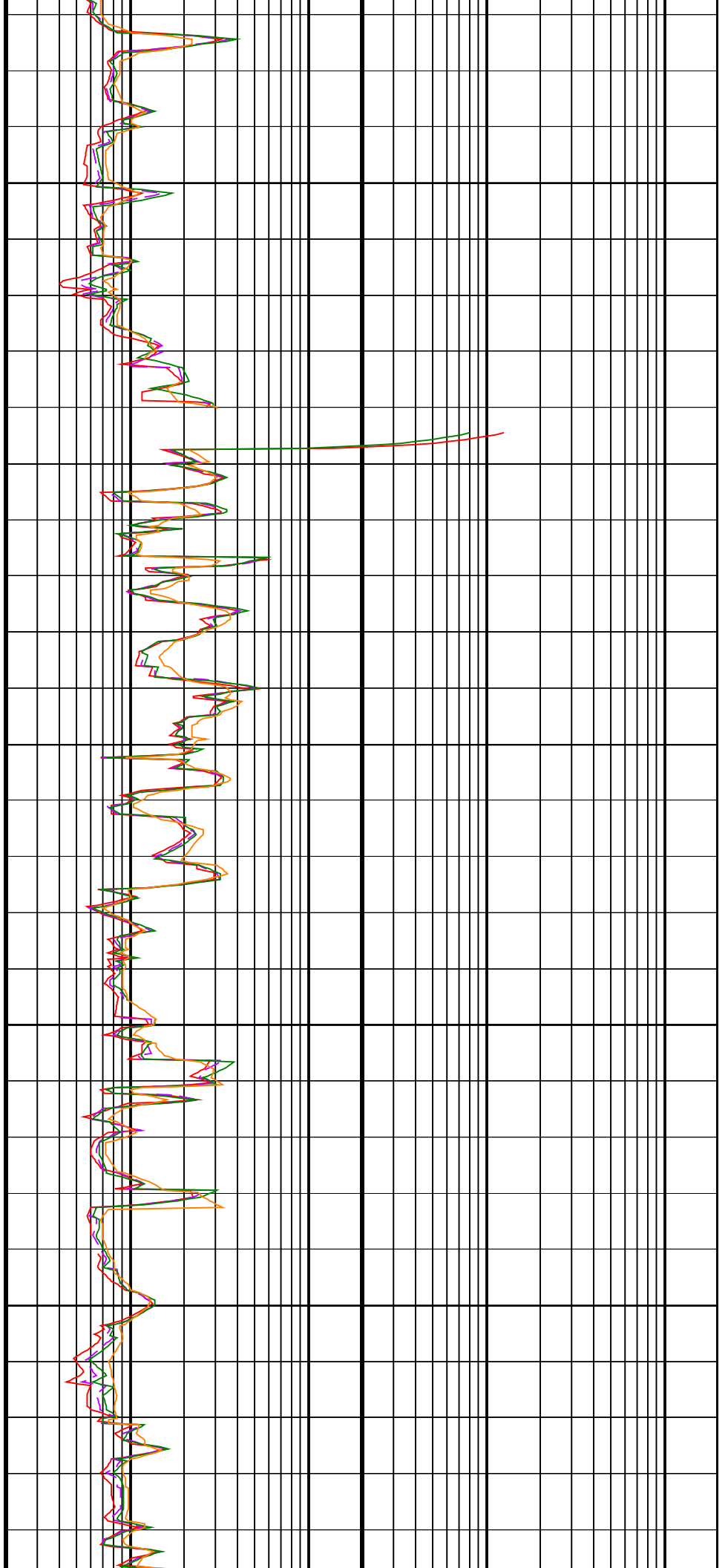


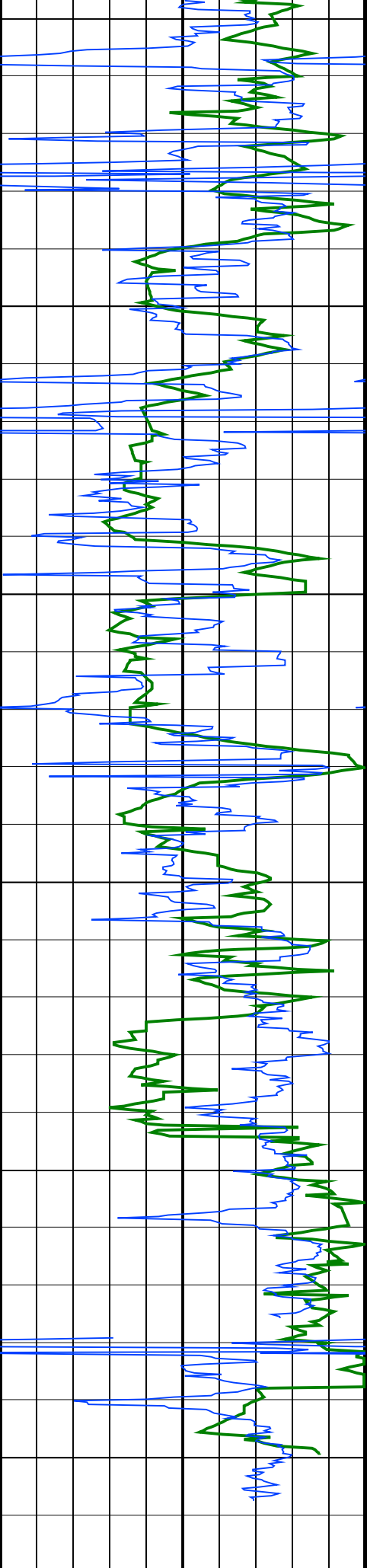


3050
TVD

3100
TVD

3150
TVD

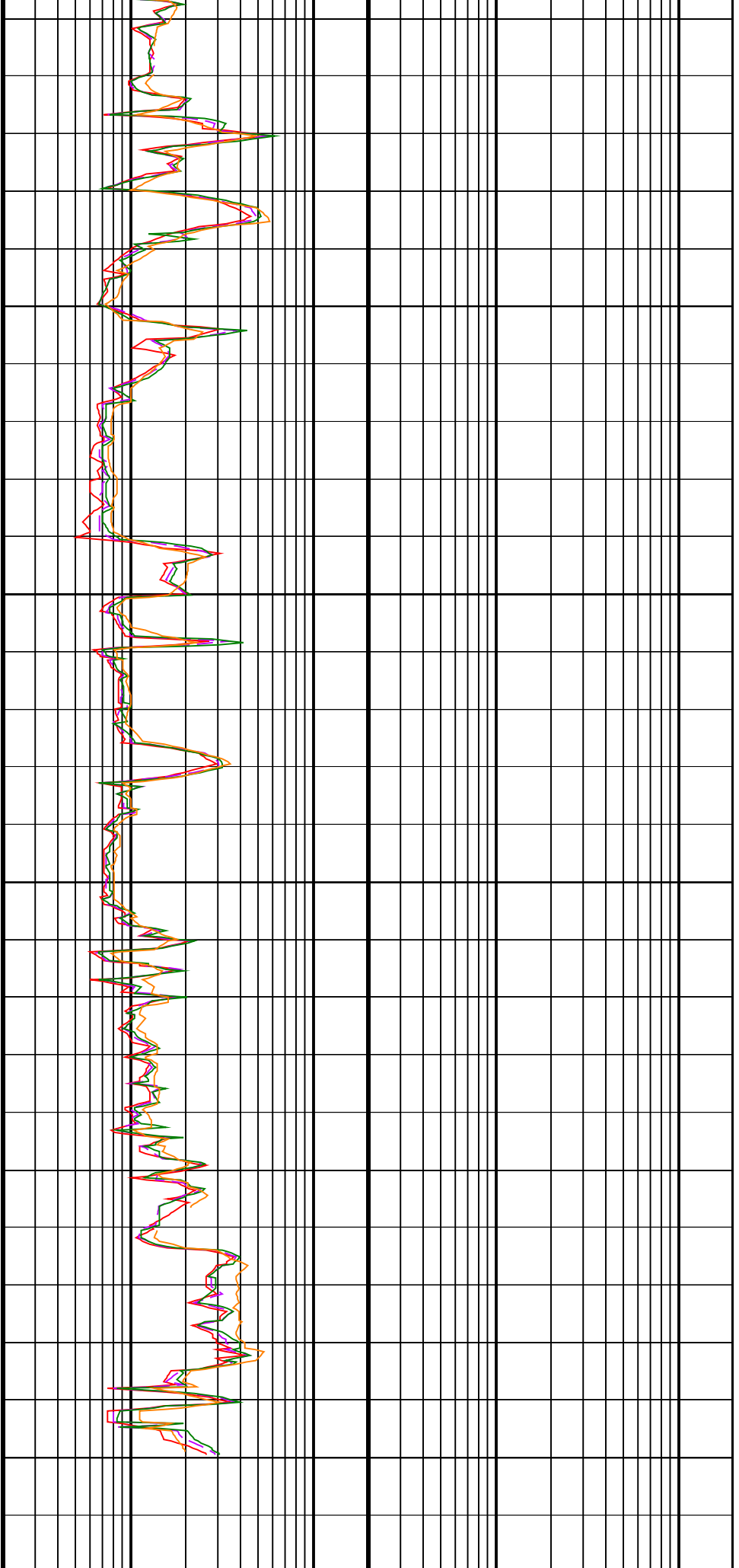




3200
TVD

3250
TVD

3300
TVD



ROP*5 (ROP5)
(M/HR)

ARC BHCorr Phase-Shift Resistivity 16-in. at 2 MHz, Real-Time (P16H_RT)
(OHMM)

ARC Gamma Ray, Real-Time (ARC_GR_RT)	(M/HR)	0
0	(GAPI)	200

0.2	(OHMM)	2000
0.2	ARC BHCorr Phase-Shift Resistivity 28-in. at 2 MHz, Real-Time (P28H_RT) (OHMM)	2000
0.2	ARC BHCorr Phase-Shift Resistivity 40-in. at 2 MHz, Real-Time (P40H_RT) (OHMM)	2000
0.2	ARC BHCorr Attenuation Resistivity 40-in. at 2 MHz, Real-Time (A40H_RT) (OHMM)	2000

IDEAL Version: ID13_0C_08
IDF

ARC9A-AA	id13_0c_02	MWD_10	id13_0c_02
SWD9-AA	id13_0c_02	RAB	id13_0c_02
ADN	id13_0c_02		