

Madfish-1 Run4 VISION Resistivity RT 500MD

ARC9A-AA id13_0c_02
 SWD9-AA id13_0c_02
 ADN id13_0c_02

MWD_10 id13_0c_02
 RAB id13_0c_02

Format: VISION Resistivity Vertical Scale: 1:500 Graphics File Created: 03-Dec-2008 10:34

ARC BHCorr Phase-Shift Resistivity
40-in. at 2 MHz, Real-Time (P40H_RT)
 0.2 (OHMM) 2000

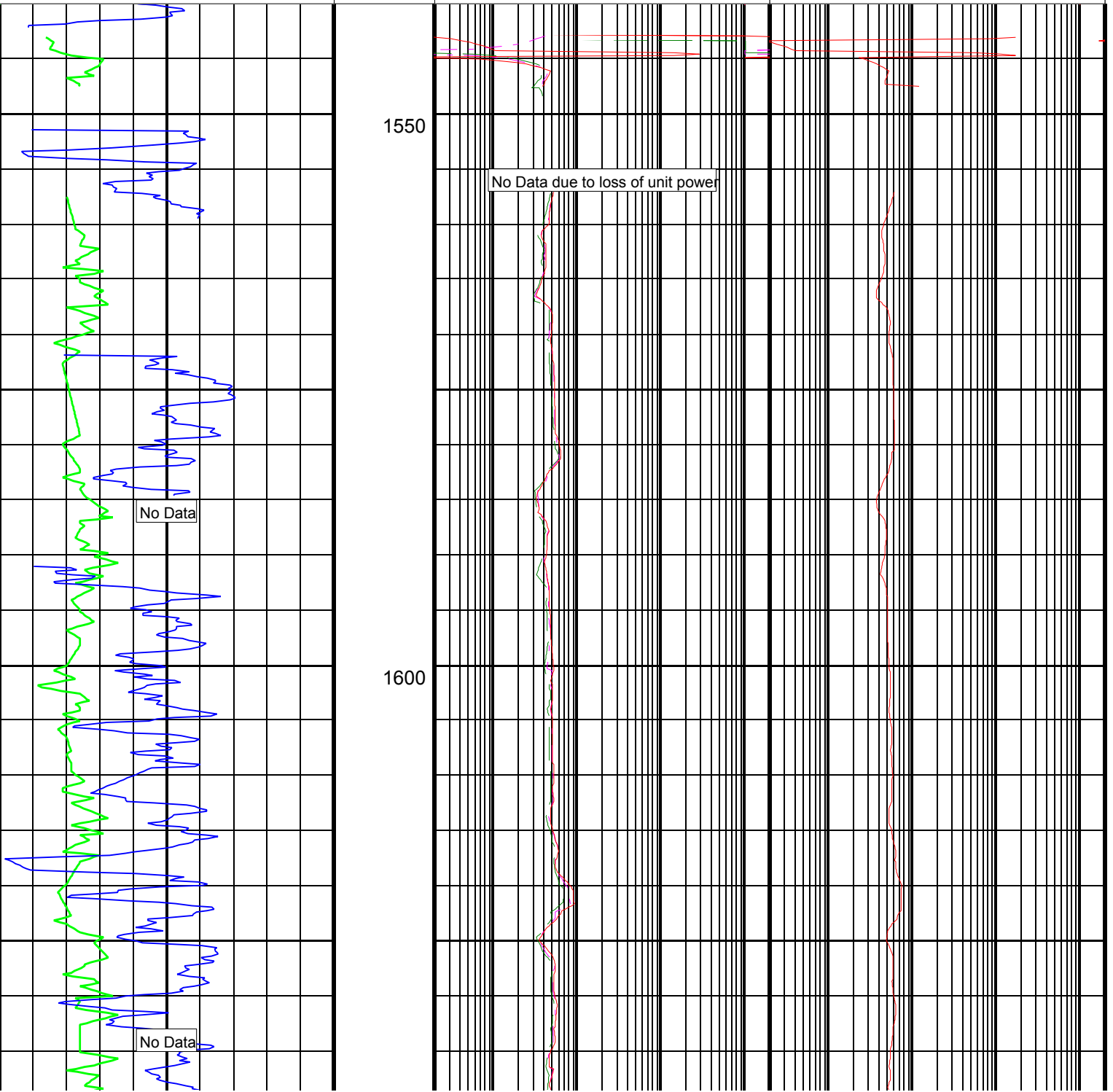
ARC BHCorr Phase-Shift Resistivity
28-in. at 2 MHz, Real-Time (P28H_RT)
 0.2 (OHMM) 2000

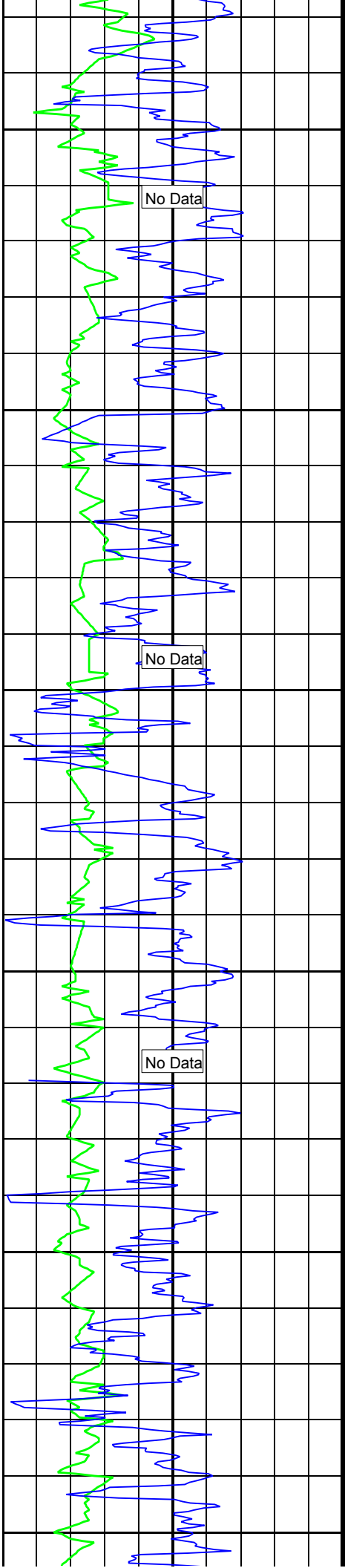
ARC BHCorr Phase-Shift Resistivity
16-in. at 2 MHz, Real-Time (P16H_RT)
 0.2 (OHMM) 2000

ARC BHCorr Attenuation Resistivity
40-in. at 2 MHz, Real-Time (A40H_RT)
 0.2 (OHMM) 2000

ARC Gamma Ray, Real-Time (ARC_GR_RT)
 0 (GAPI) 200

ROP (ROP)
 200 (M/HR) 0

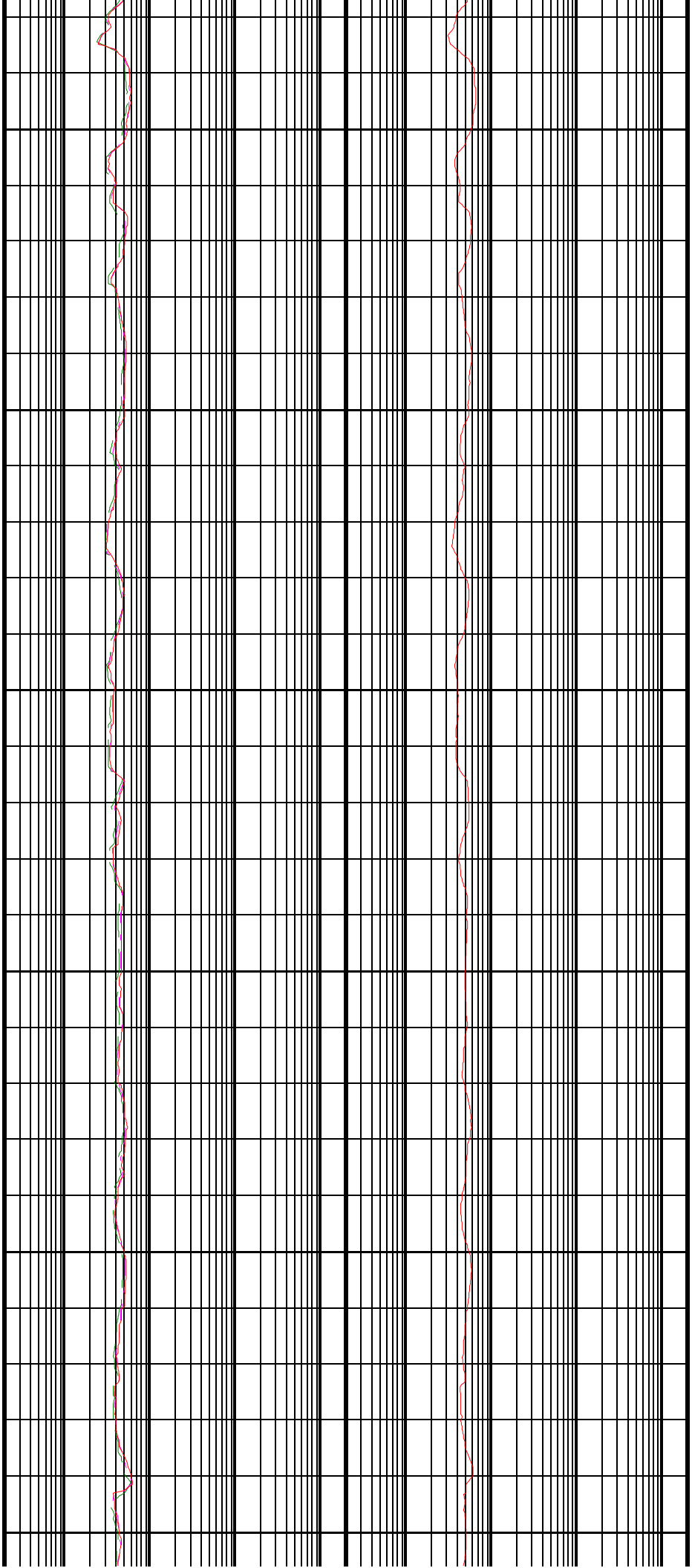


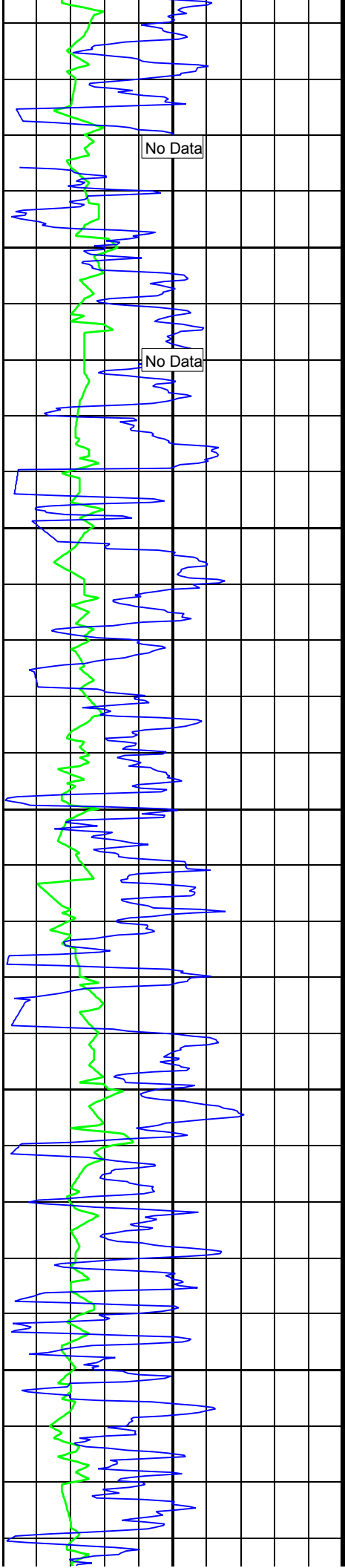


1650

1700

1750

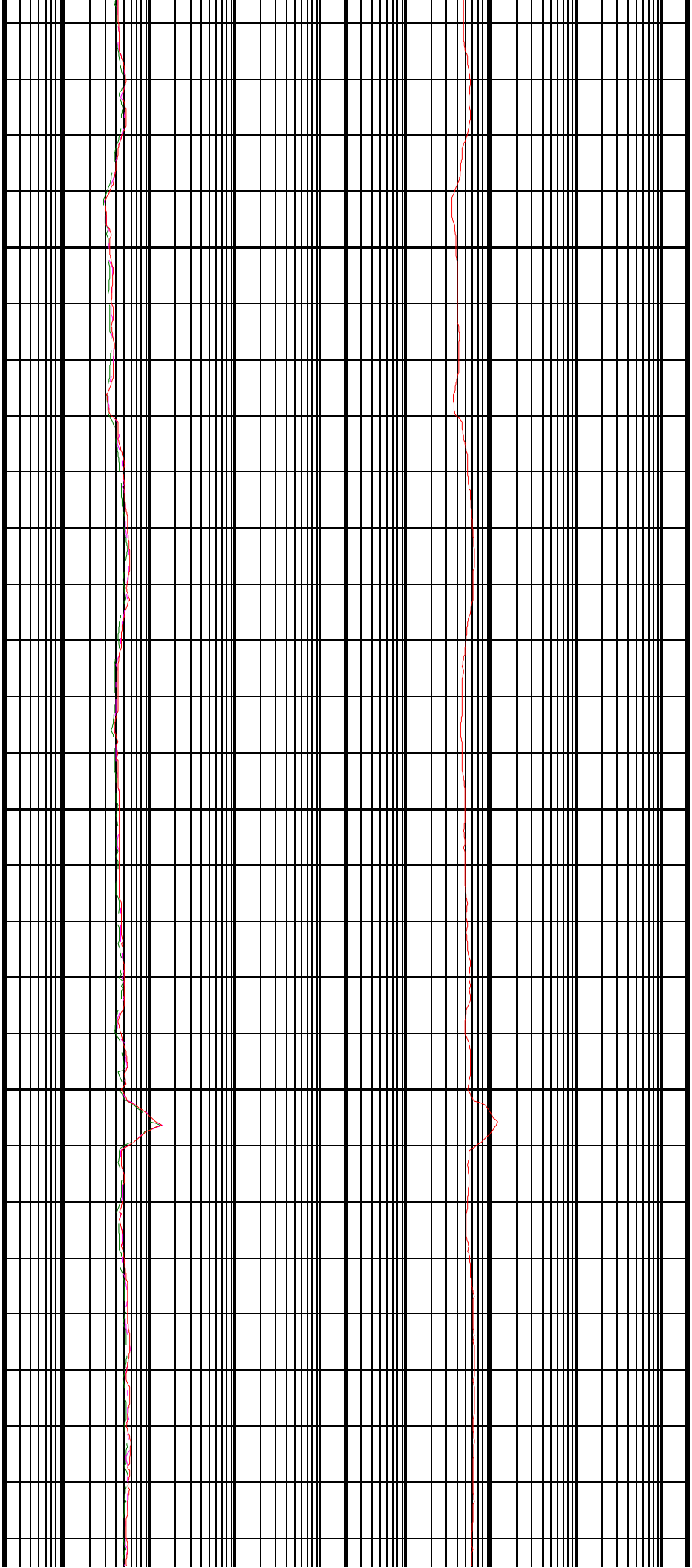


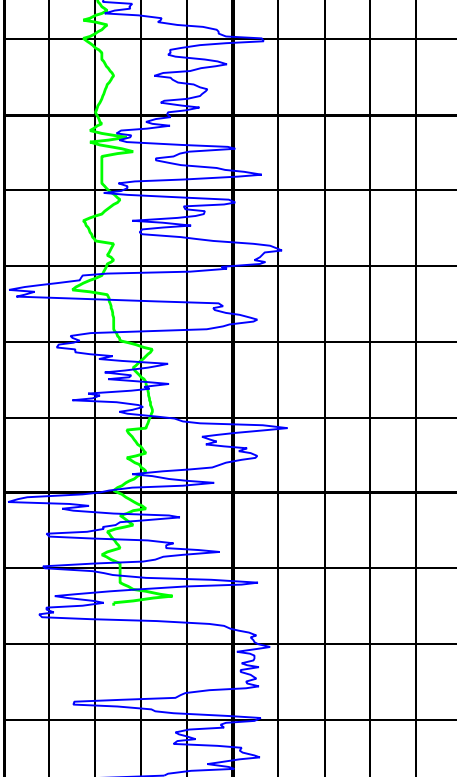


1800

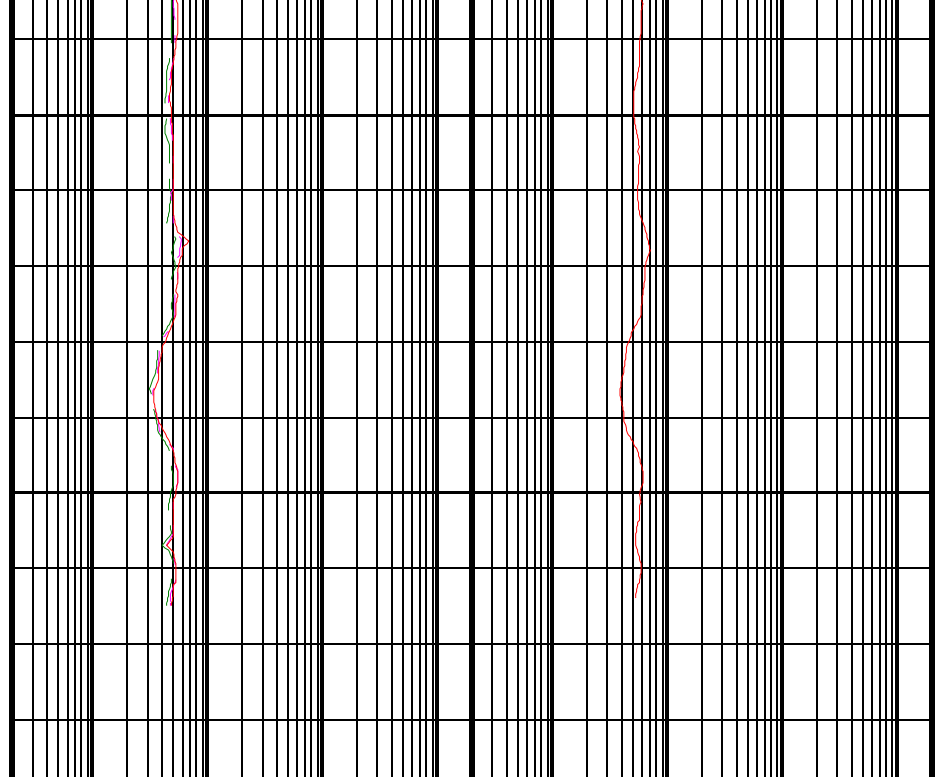
1850

1900





1950



ROP (ROP)		
200	(M/HR)	0
ARC Gamma Ray, Real-Time (ARC_GR_RT)		
0	(GAPI)	200

ARC BHCORR Phase-Shift Resistivity		
16-in. at 2 MHz, Real-Time (P16H_RT)		
0.2	(OHMM)	2000

ARC BHCORR Attenuation Resistivity		
40-in. at 2 MHz, Real-Time (A40H_RT)		
0.2	(OHMM)	2000

ARC BHCORR Phase-Shift Resistivity		
28-in. at 2 MHz, Real-Time (P28H_RT)		
0.2	(OHMM)	2000

ARC BHCORR Phase-Shift Resistivity		
40-in. at 2 MHz, Real-Time (P40H_RT)		
0.2	(OHMM)	2000

IDEAL Version: ID13_0C_08
IDF

ARC9A-AA id13_0c_02
 SWD9-AA id13_0c_02
 ADN id13_0c_02

MWD_10 id13_0c_02
 RAB id13_0c_02