



PRESSURE EVALUATION LOG

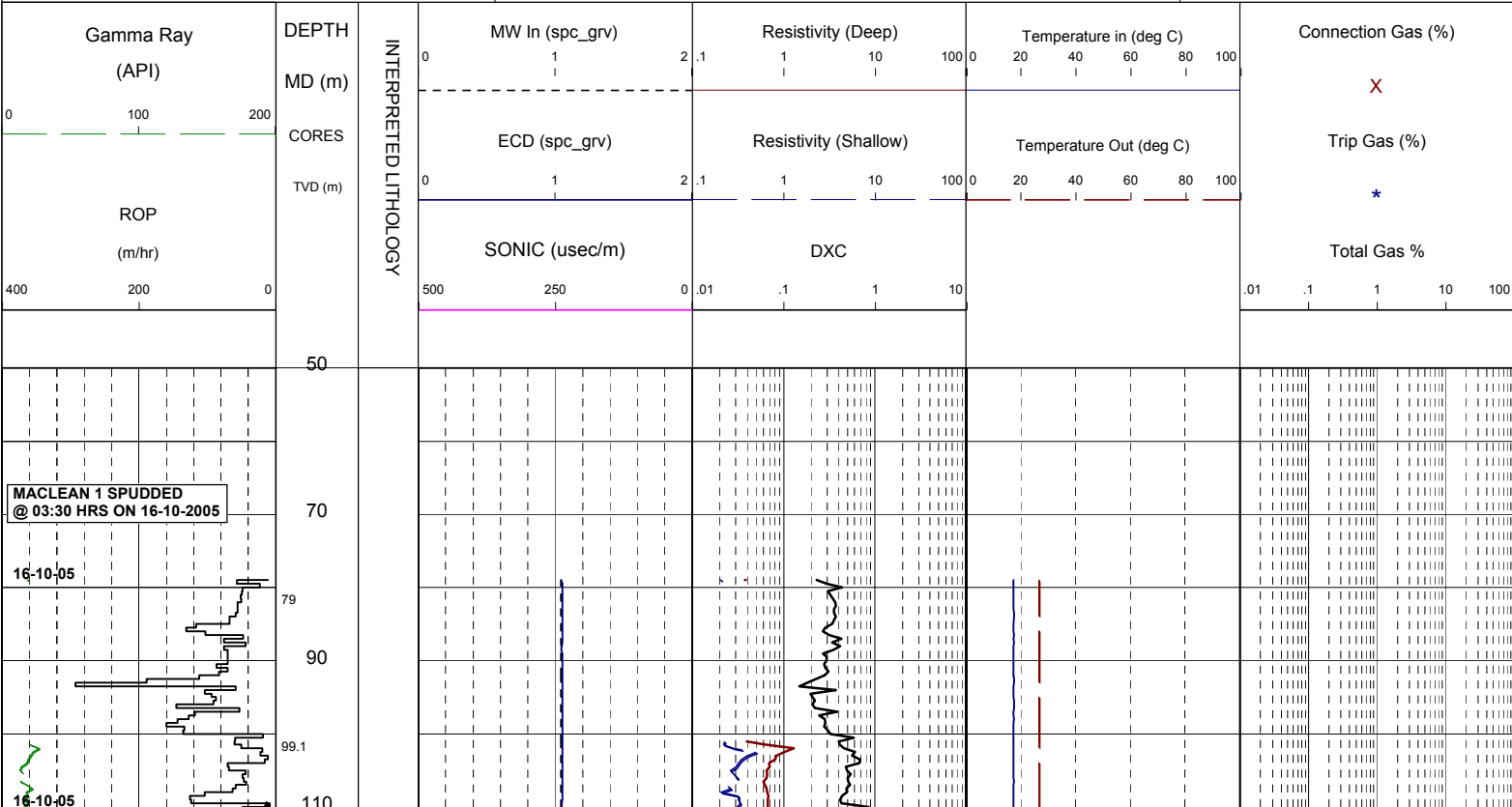


WELL : MACLEAN 1

FROM (m): 50 TO (m): 780 SCALE: 1/ 1000

Country : AUSTRALIA Region : VICTORIA Field : GIPPSLAND BASIN Permit : VIC/P-47 Well Type : VERTICAL EXPLORATION Rig Name : OCEAN PATRIOT	POSITION Latitude : 38°02'46.32"S Longitude : 148°32'52.92"E X (m) : 635,831.9 mE Y (m) : 5,787,927.9 mN RT-LAT (m) : 21.5 RT-Seabed (m) : 78.5	CASING 508mm Shoe at (mMDRT) : 110.9m 340mm Shoe at (mMDRT) : 350.0m	Spud Date : 16-10-2005 Total Depth Date : 20-10-2005 Total Depth (mRT) 766.0m T.V.D. (mSSLAT) : 744.50m Status : P&A
--	--	---	--

ABBREVIATIONS MW MUD WEIGHT FV FUNNEL VISCOSITY PV PLASTIC VISCOSITY YP YIELD POINT FC FILTER CAKE SOL SOLIDS WL FILTRATE SD SAND - % S SALINITY - PPM RM MUD RESISTIVITY RMF MUD FILTRATE C CARBIDE TEST LAT LOGGED AFTER TRIP DS DEVIATION SURVEY	NB NEW BIT RR RERUN BIT CB CORE BIT WOB WEIGHT ON BIT RPM REVS PER MINUTE FLC FLOW CHECK CR CIRCULATE RETURNS PR POOR RETURNS NR NO RETURNS BG BACKGROUND GAS TG TRIP GAS STG SHORT TRIP GAS CG CONNECTION GAS SG SWAB GAS SVG SURVEY GAS	LITHOLOGY LEGEND 	ENGINEERING LEGEND
--	---	-----------------------------	-------------------------------

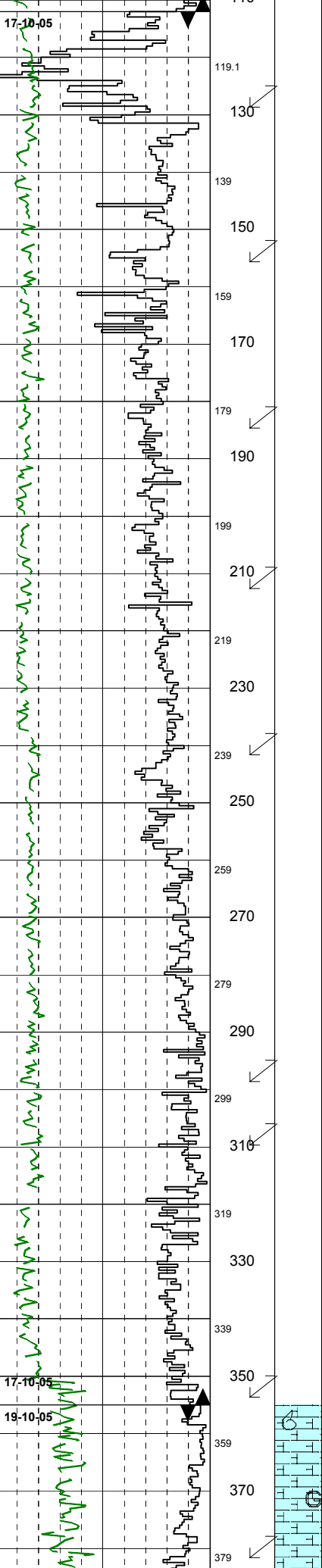


17-10-05

17-10-05

18-10-05

119.1
130
139
150
159
170
179
190
199
210
219
230
239
250
259
270
279
290
299
310
319
330
339
350
359
370
379



340mm (13.375") Casing Shoe
set @ 350 mMDRT

FIT @ 358 m: EMW= 1.66sg (13.8ppg)

340mm (13.375") Casing Shoe
set @ 350 mMDRT

