

# True Vertical Depth Log

## Longtom-4\_RT\_500TVD Log

Format: V825 RT Log 500TVD

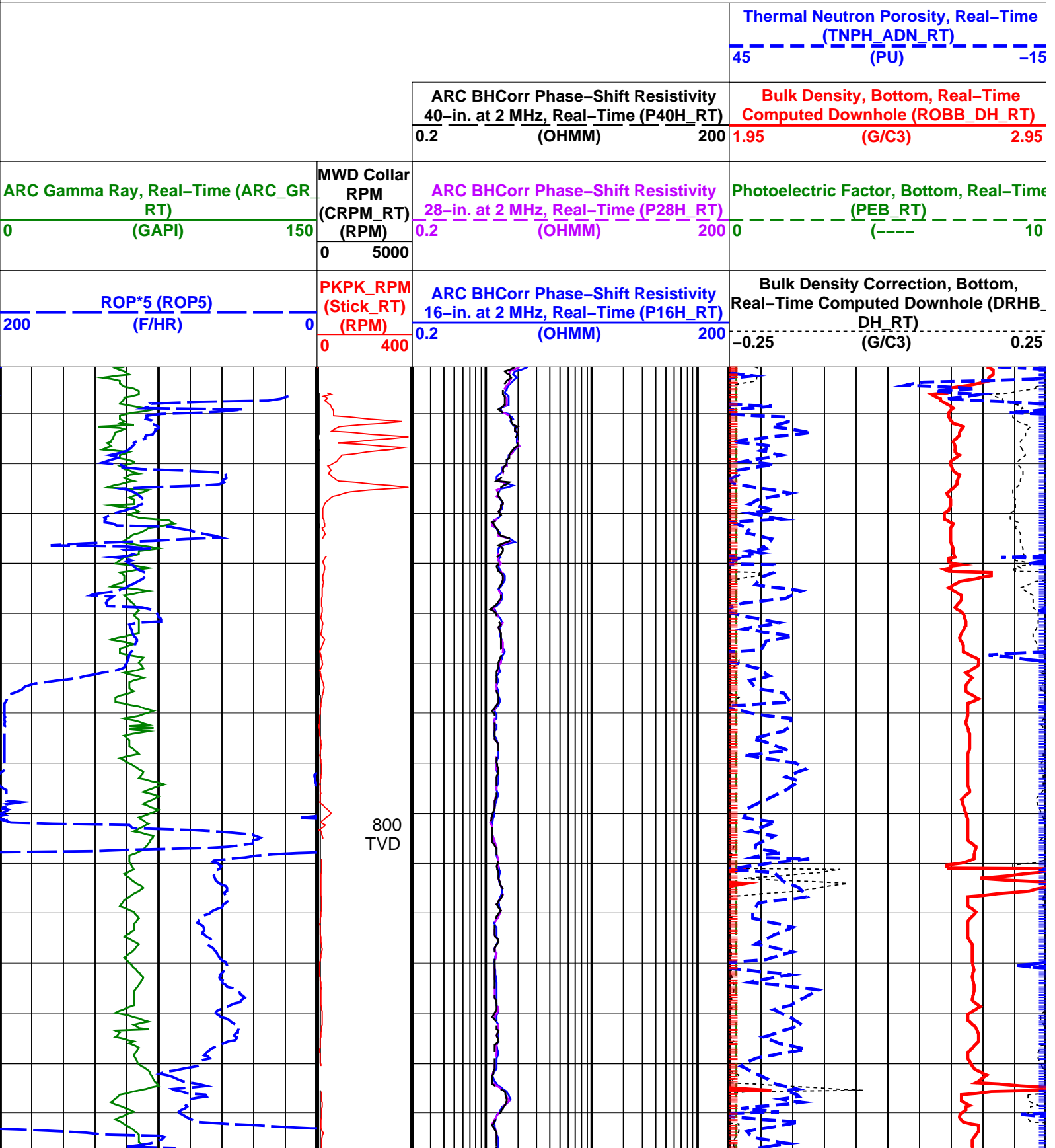
Vertical Scale: 1:500

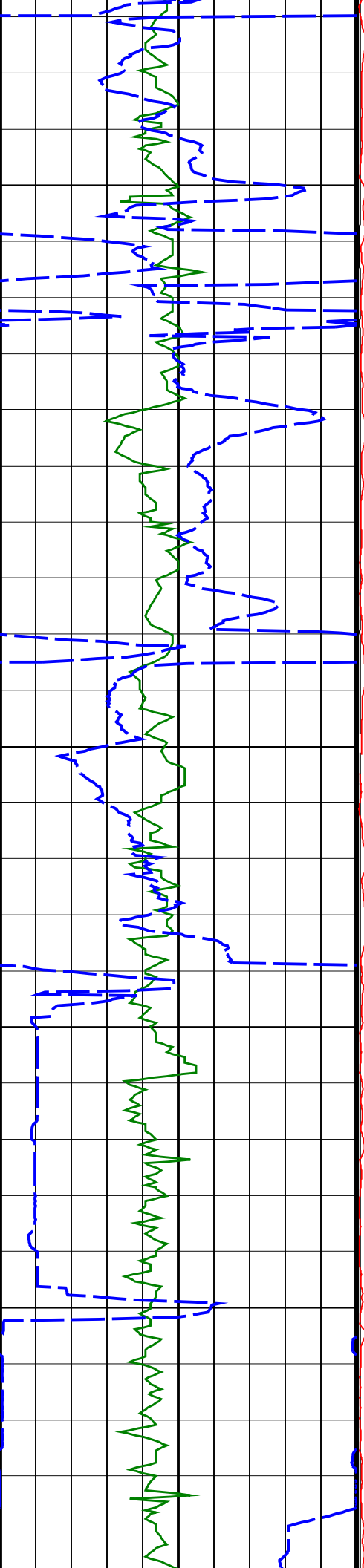
Graphics File Created: 02-Jul-2008 04:10

### PIP SUMMARY

Density Samples  $\vdash$

Neutron Samples  $\dashv$

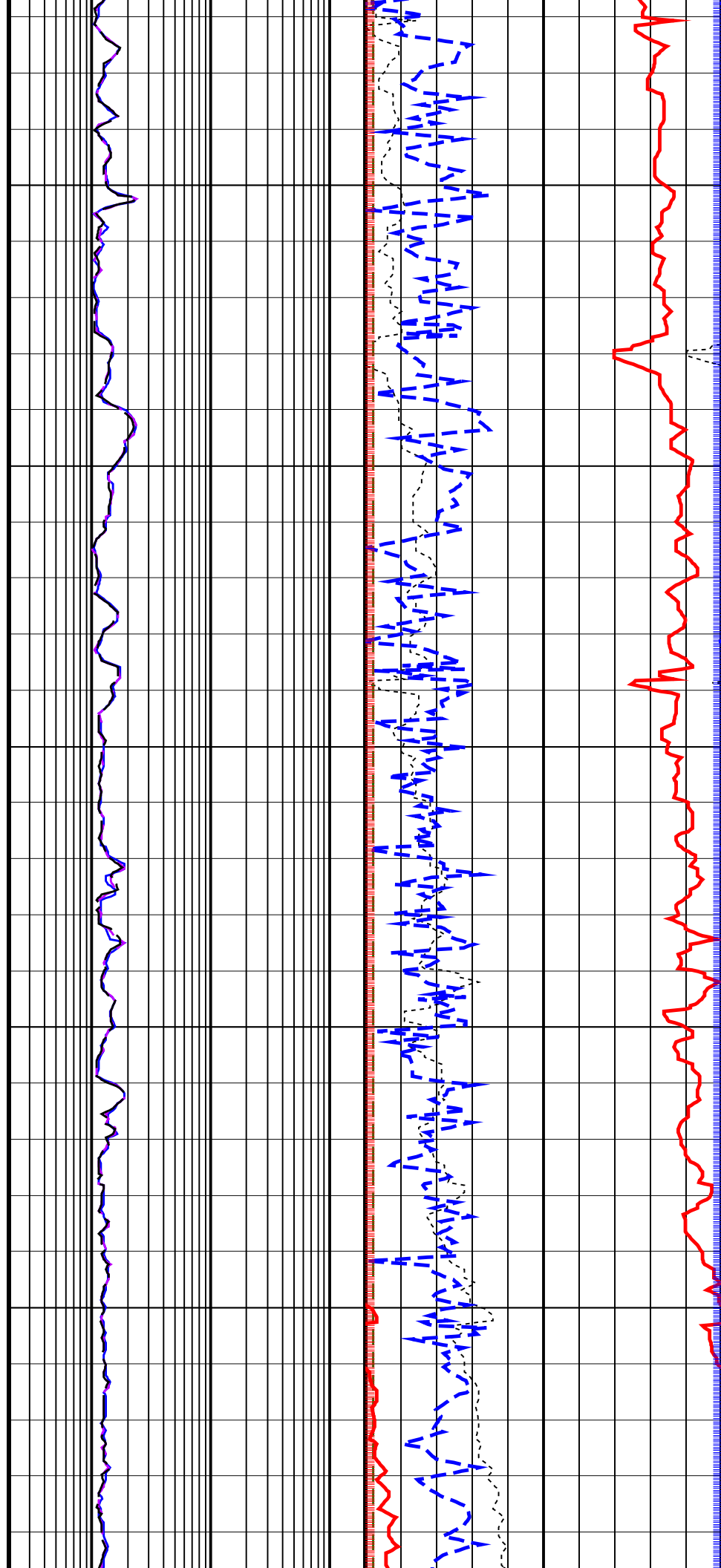


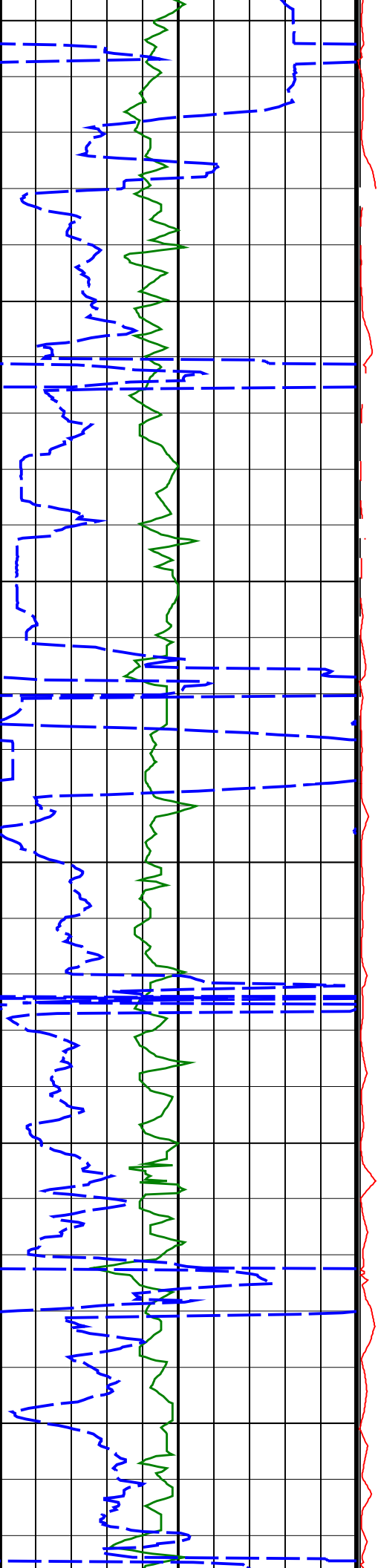


850  
TVD

900  
TVD

950  
TVD

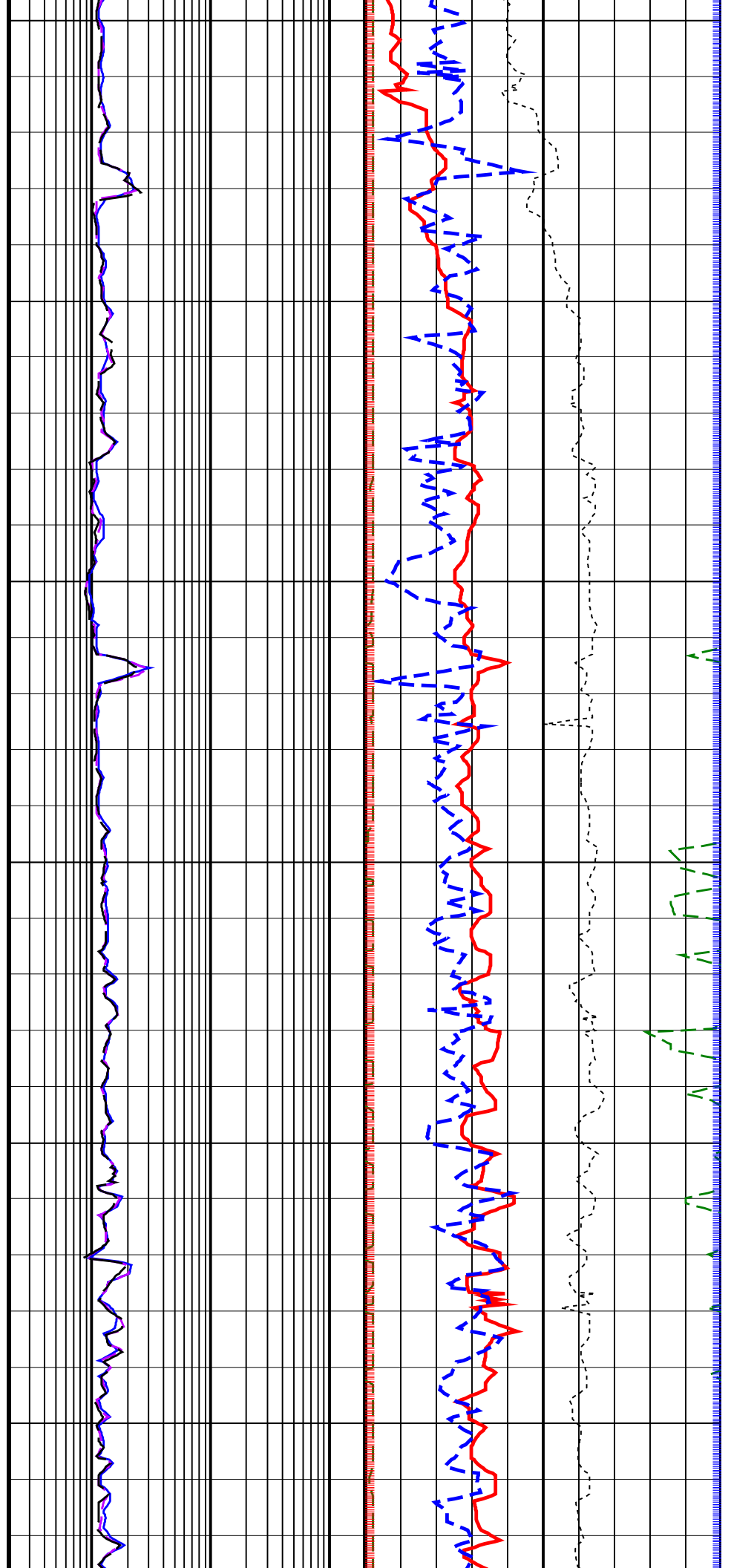


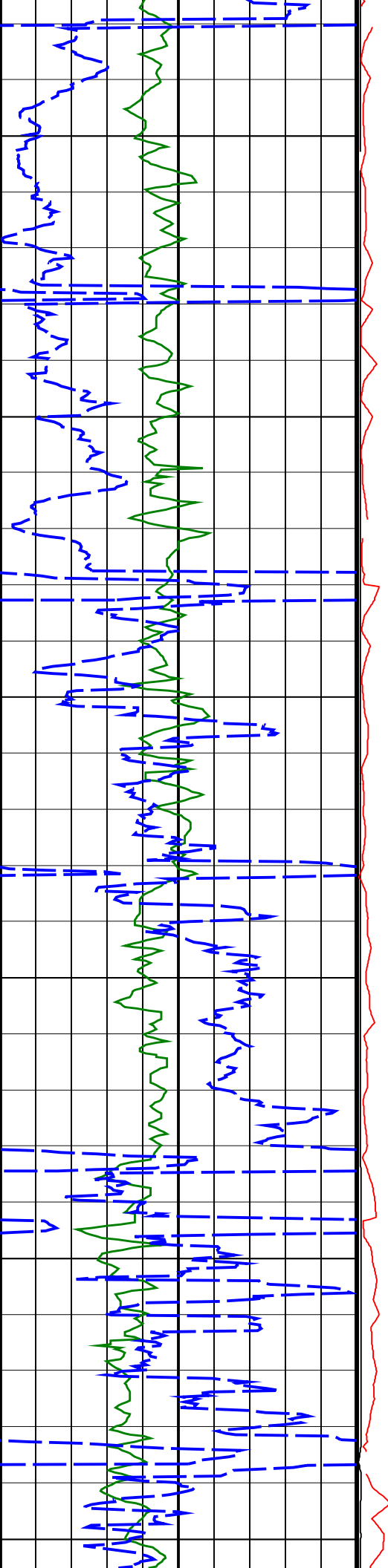


1000  
TVD

1050  
TVD

1100  
TVD

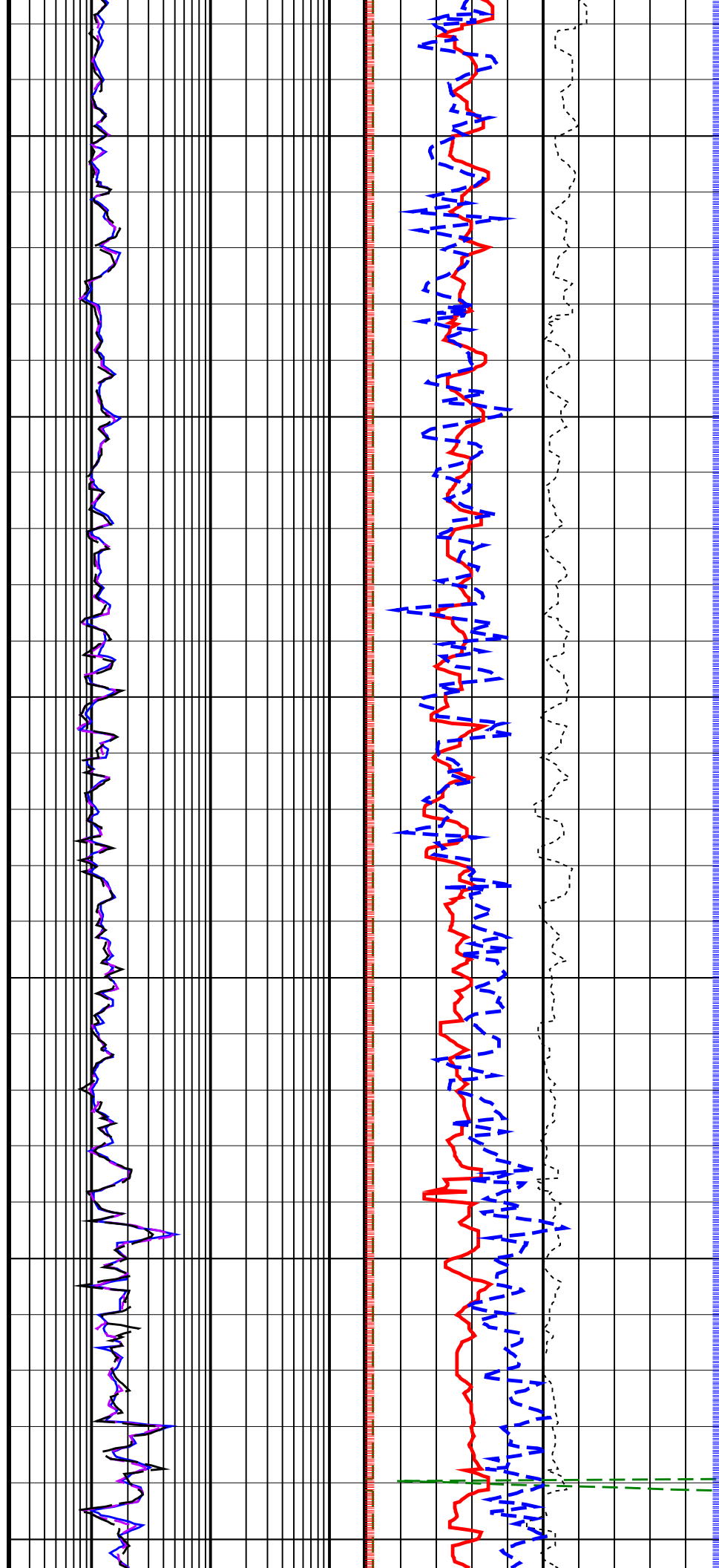


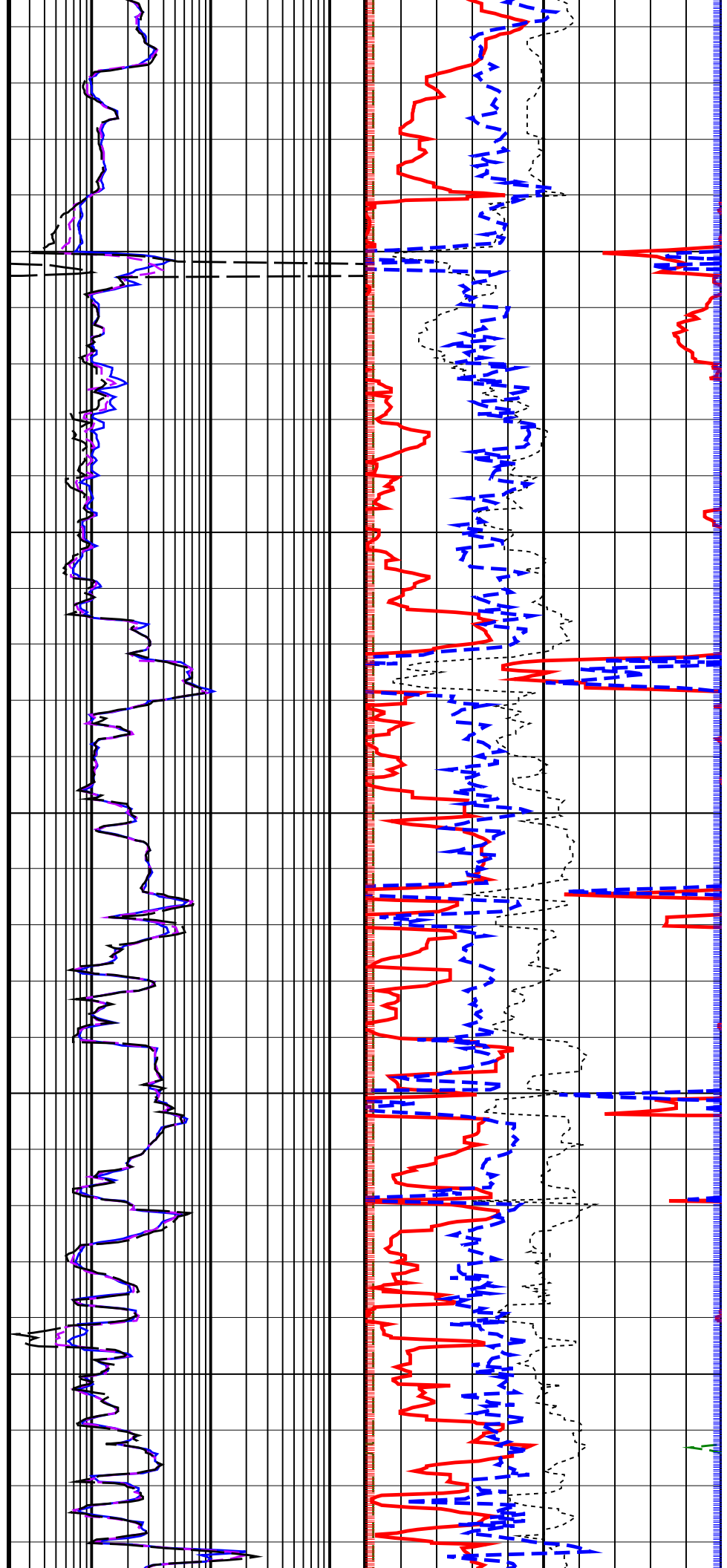
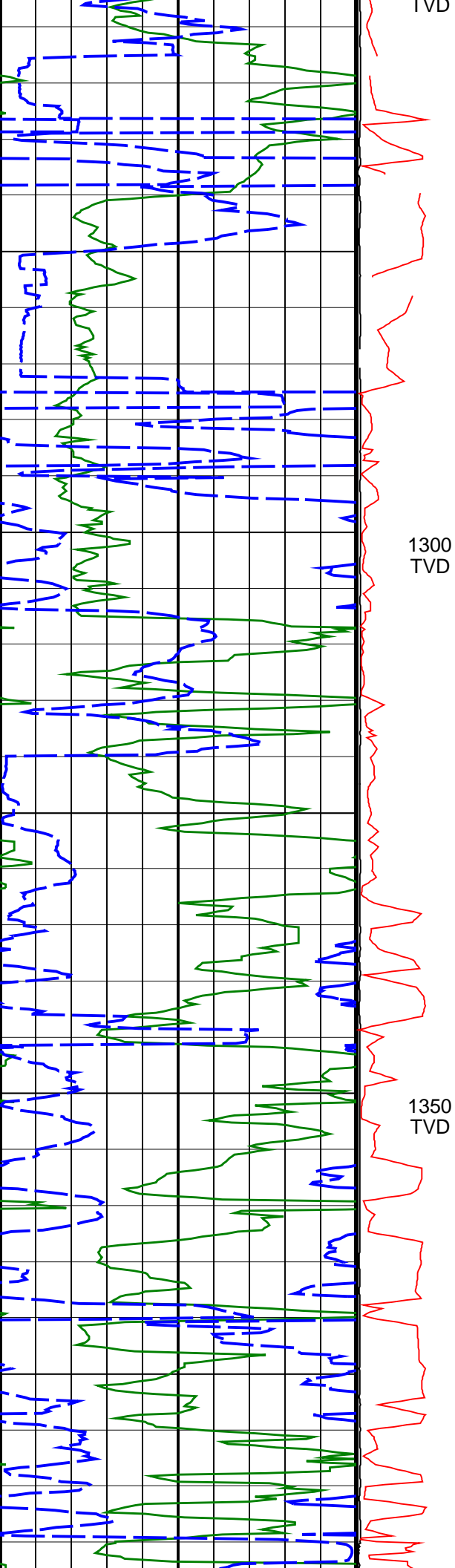


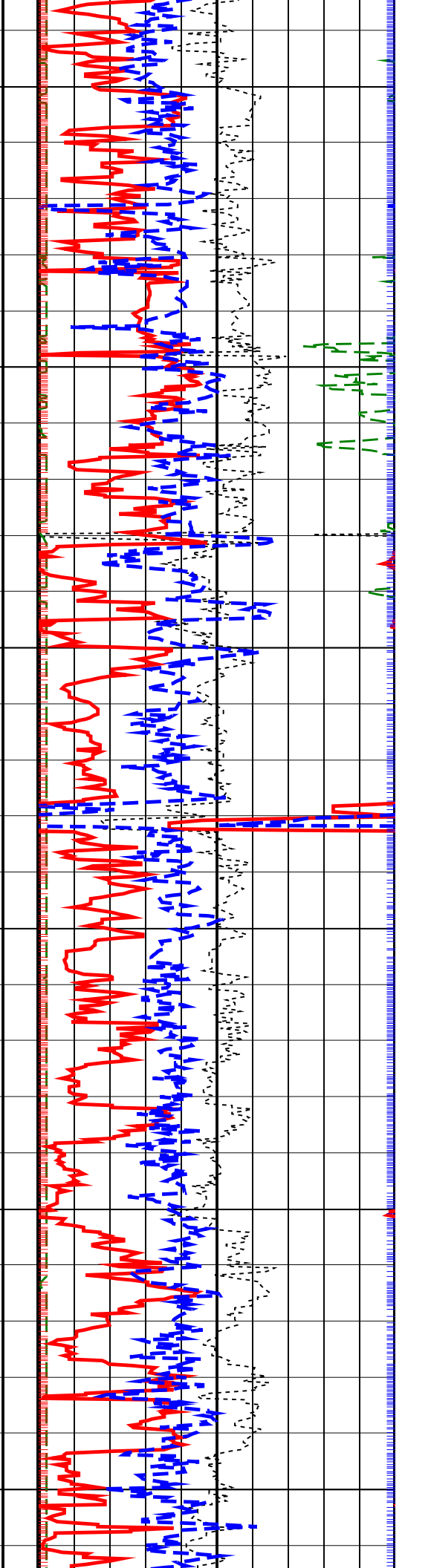
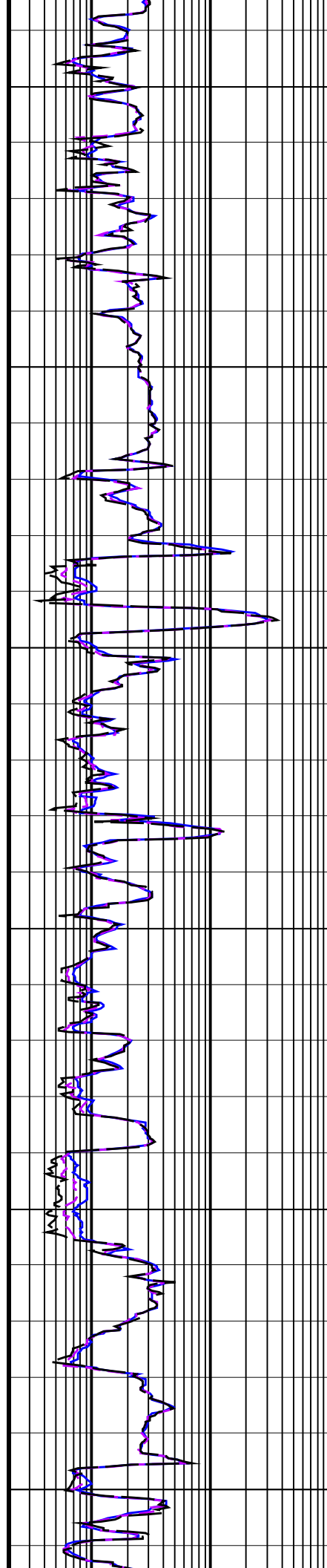
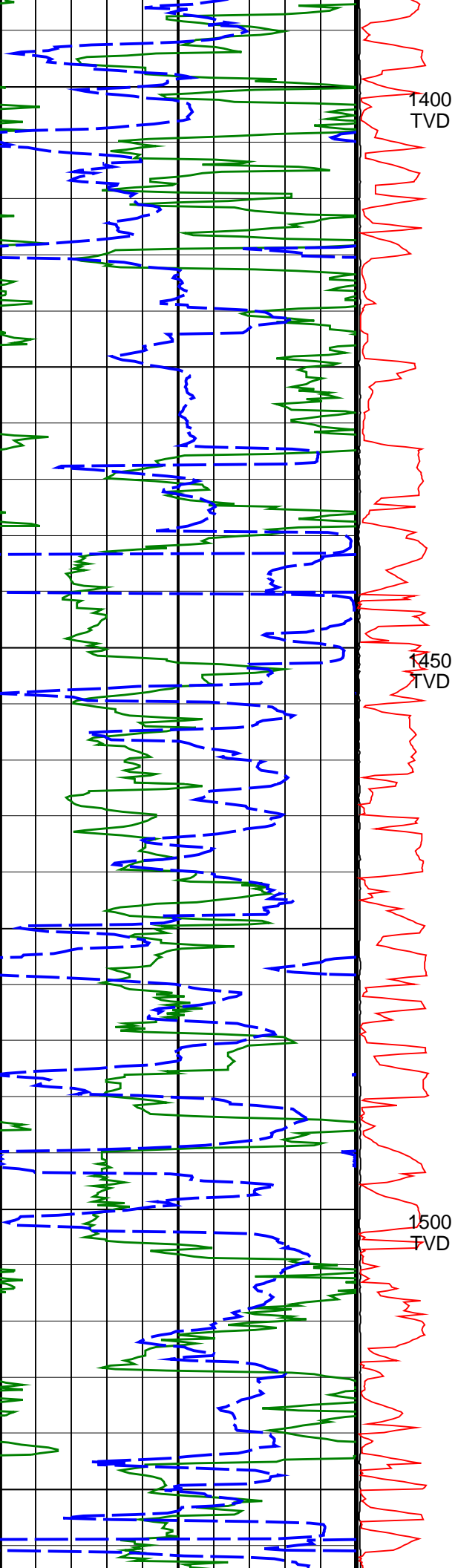
1150  
TVD

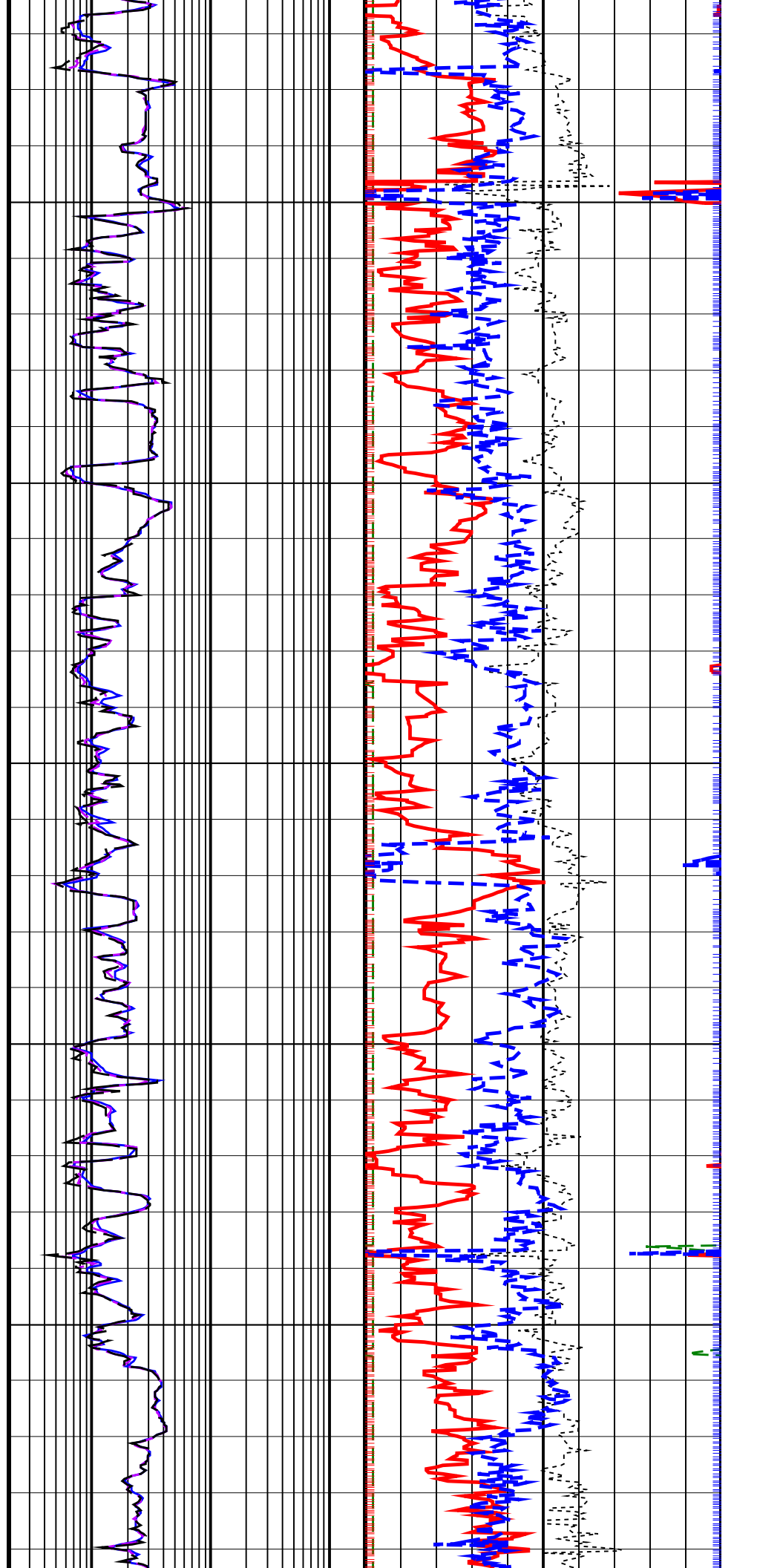
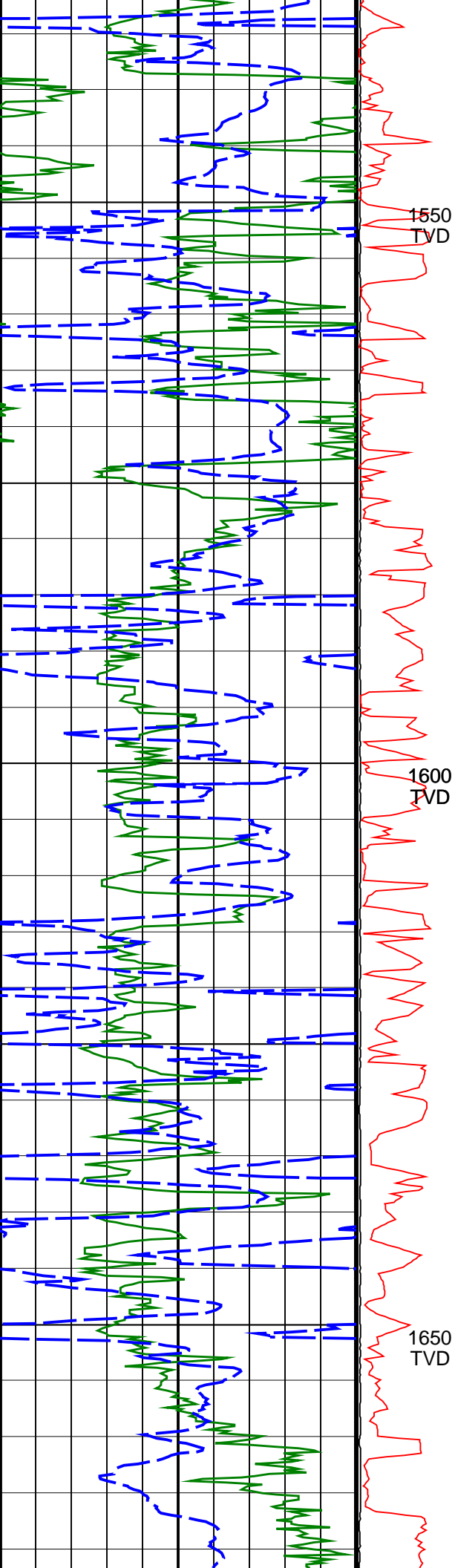
1200  
TVD

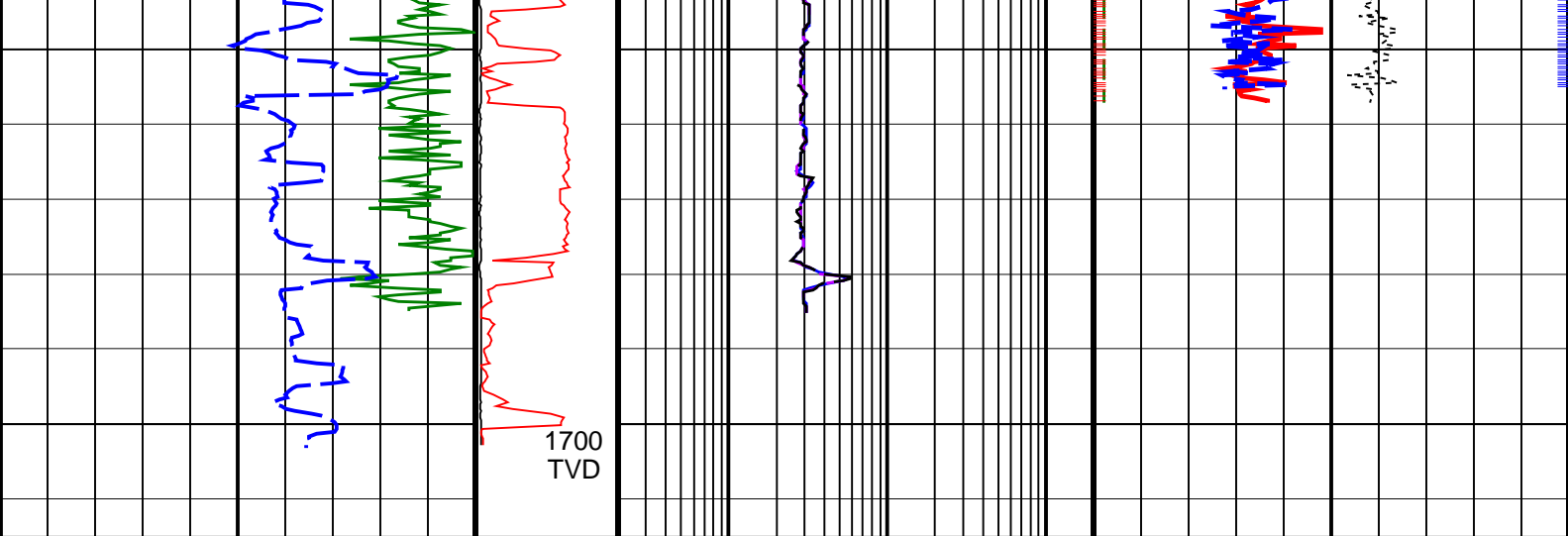
1250  
TVD











<u>ROP*5 (ROP5)</u> (F/HR)	<u>PKPK_RPM</u> (Stick_RT) (RPM)	<u>ARC BHCorr Phase-Shift Resistivity</u> 16-in. at 2 MHz, Real-Time (P16H_RT) (OHMM)	<u>Bulk Density Correction, Bottom,</u> Real-Time Computed Downhole (DRHB_ DH_RT) (G/C3)
200 ————— 0	0 ————— 400	0.2 ————— 200	-0.25 ————— 0.25
<u>ARC Gamma Ray, Real-Time (ARC_GR_RT)</u> (GAPI)	<u>MWD Collar RPM</u> (CRPM_RT) (RPM)	<u>ARC BHCorr Phase-Shift Resistivity</u> 28-in. at 2 MHz, Real-Time (P28H_RT) (OHMM)	<u>Photoelectric Factor, Bottom, Real-Time</u> (PEB_RT) (----
0 ————— 150	0 ————— 5000	0.2 ————— 200	0 ————— 10
		<u>ARC BHCorr Phase-Shift Resistivity</u> 40-in. at 2 MHz, Real-Time (P40H_RT) (OHMM)	<u>Bulk Density, Bottom, Real-Time</u> Computed Downhole (ROBB_DH_RT) (G/C3)
		0.2 ————— 200	1.95 ————— 2.95
			<u>Thermal Neutron Porosity, Real-Time</u> (TNPH_ADN_RT) (PU)
			45 ————— -15

PIP SUMMARY			
		Density Samples	+
		Neutron Samples	+

IDEAL Version: ID13_0C_08			
IDF			

True Vertical Depth Log			
-------------------------	--	--	--