



Company : Santos

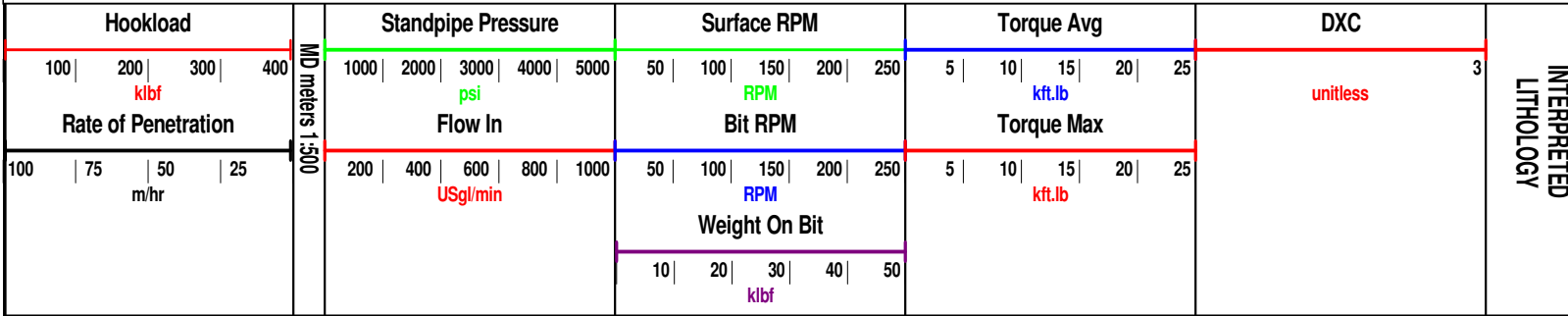
Well : Henry-2

Interval : 59.00 - 660.15 meters

Created : 28/Aug/2008 1:51:18 AM

INTEQ

### HENRY-2 DRILLING DATA PLOT



ALL DEPTH MEASURED IN METERS FROM THE ROTARY TABLE (RT)

Vertical Datum = Lowest Astronomical Tide (LAT)

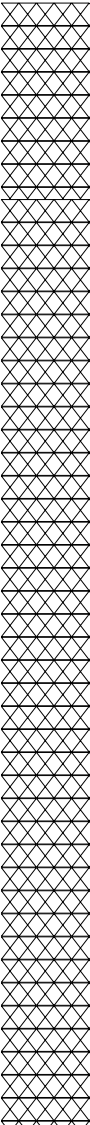
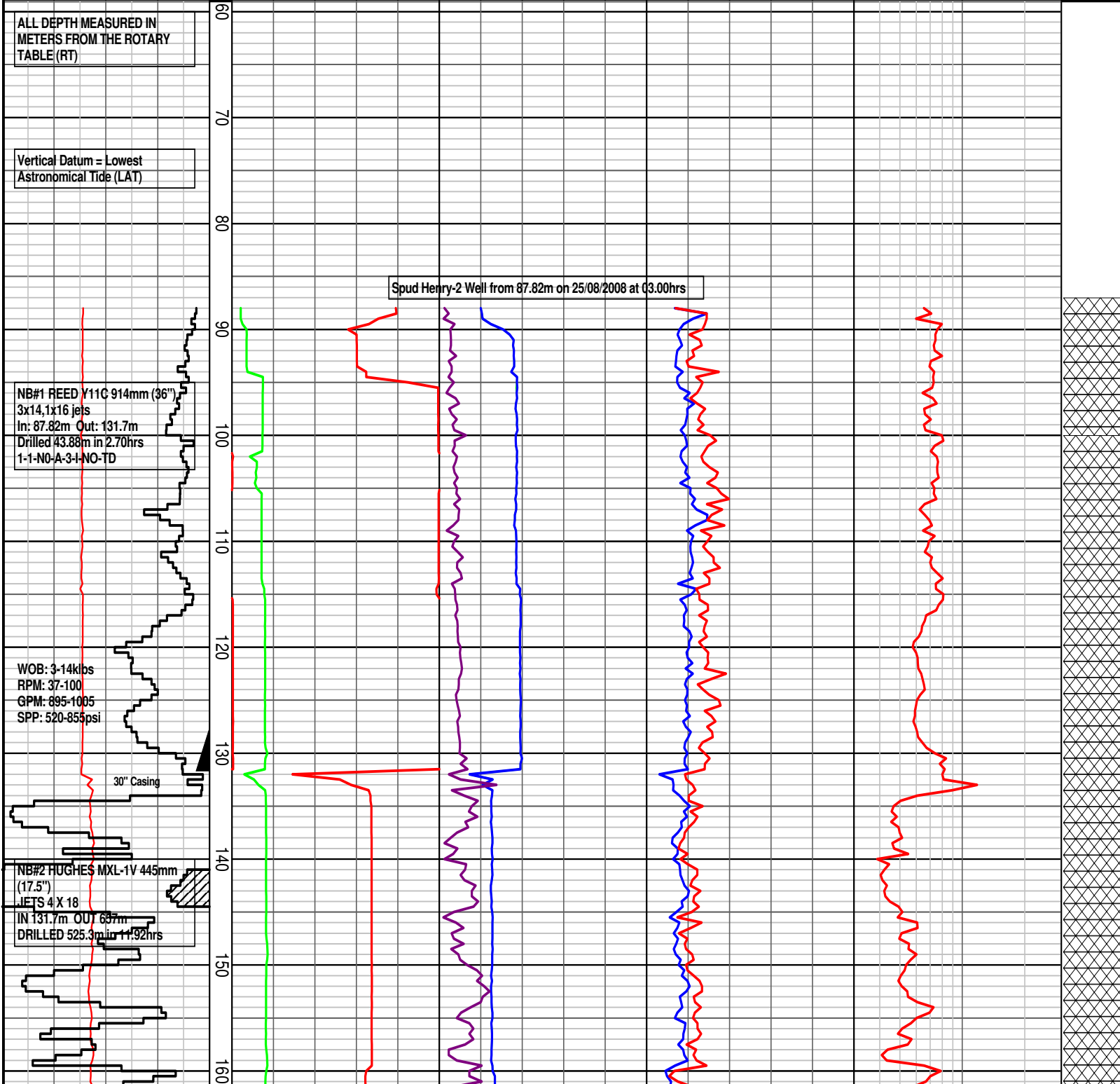
Spud Henry-2 Well from 87.82m on 25/08/2008 at 03.00hrs

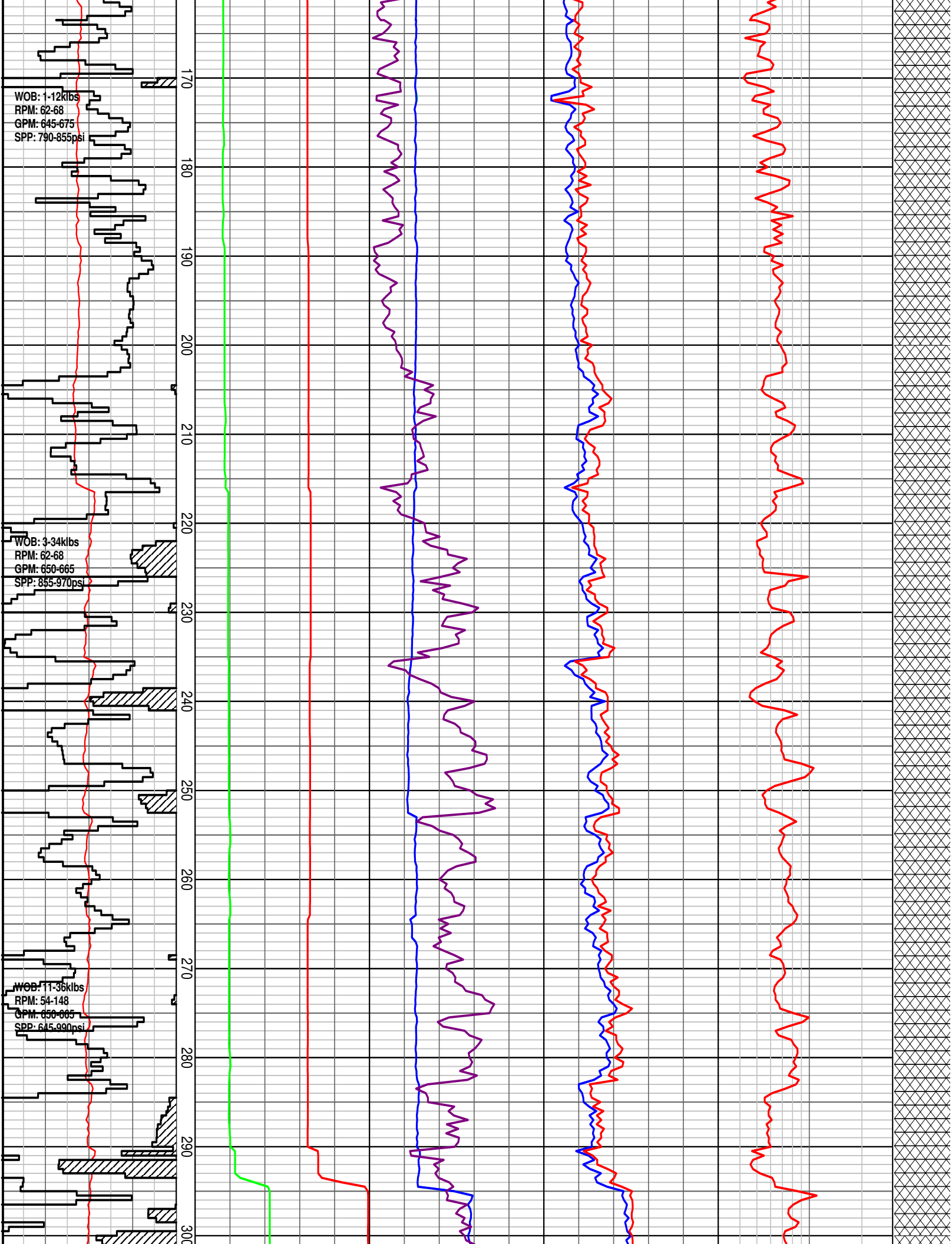
NB#1 REED Y11C 914mm (36")  
 3x14,1x16 jets  
 In: 87.82m Out: 131.7m  
 Drilled 43.88m in 2.70hrs  
 1-1-N0-A-3-I-NO-TD

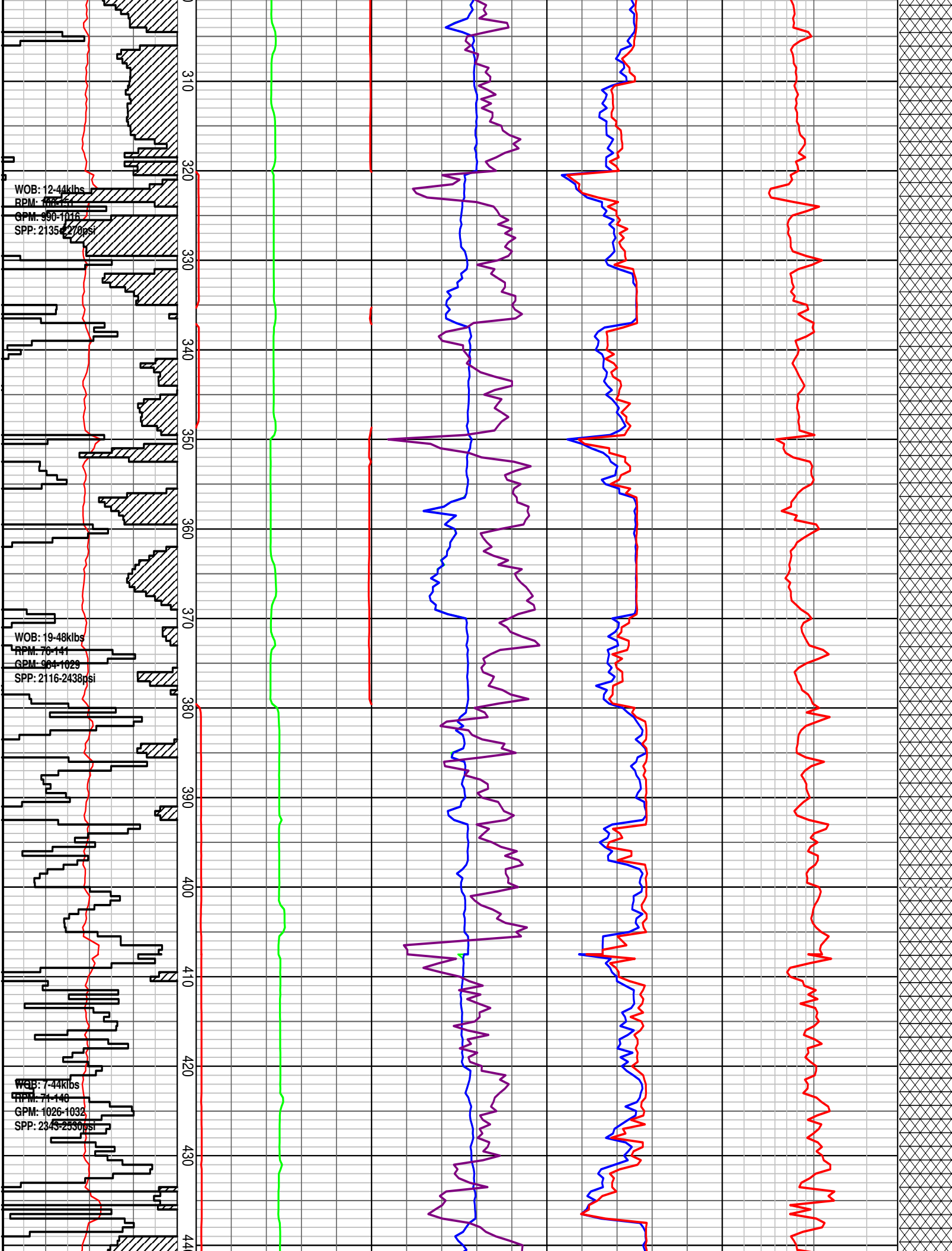
WOB: 3-14klbs  
 RPM: 37-100  
 GPM: 895-1005  
 SPP: 520-855psi

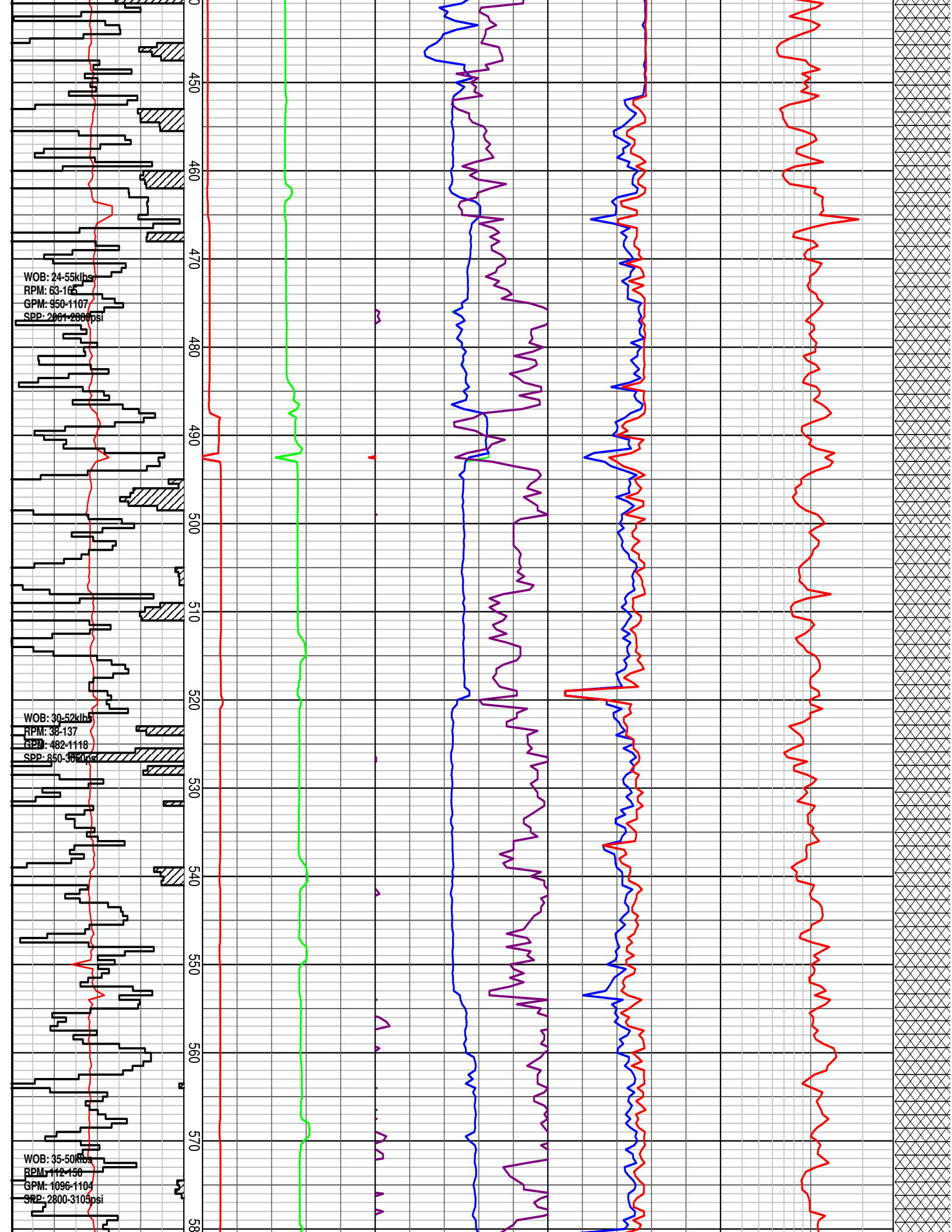
30" Casing

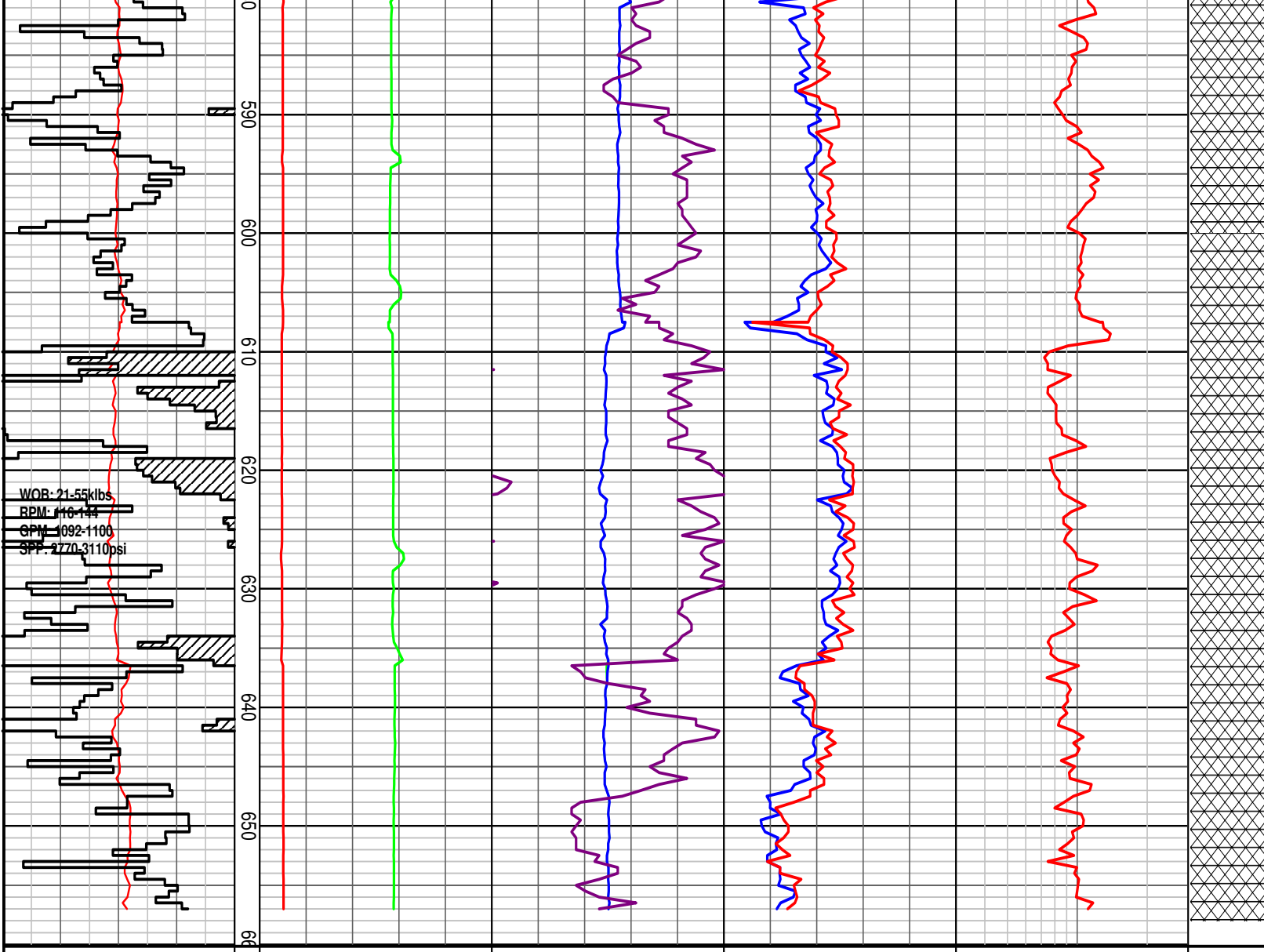
NB#2 HUGHES MXL-1V 445mm (17.5")  
 JETS 4 X 18  
 IN 131.7m OUT 637m  
 DRILLED 525.3m in 11.92hrs











### HENRY-2 DRILLING DATA PLOT

<b>Hookload</b> 100   200   300   400 klbf	MD meters 1:500	<b>Standpipe Pressure</b> 1000   2000   3000   4000   5000 psi	<b>Surface RPM</b> 50   100   150   200   250 RPM	<b>Torque Avg</b> 5   10   15   20   25 kft.lb	<b>DXC</b> unitless	3 <b>INTERPRETED LITHOLOGY</b>
<b>Rate of Penetration</b> 100   75   50   25 m/hr		<b>Flow In</b> 200   400   600   800   1000 USg/min	<b>Bit RPM</b> 50   100   150   200   250 RPM	<b>Torque Max</b> 5   10   15   20   25 kft.lb		
			<b>Weight On Bit</b> 10   20   30   40   50 klbf			