

Henry2DW1ST1 LWD RT 200TVD

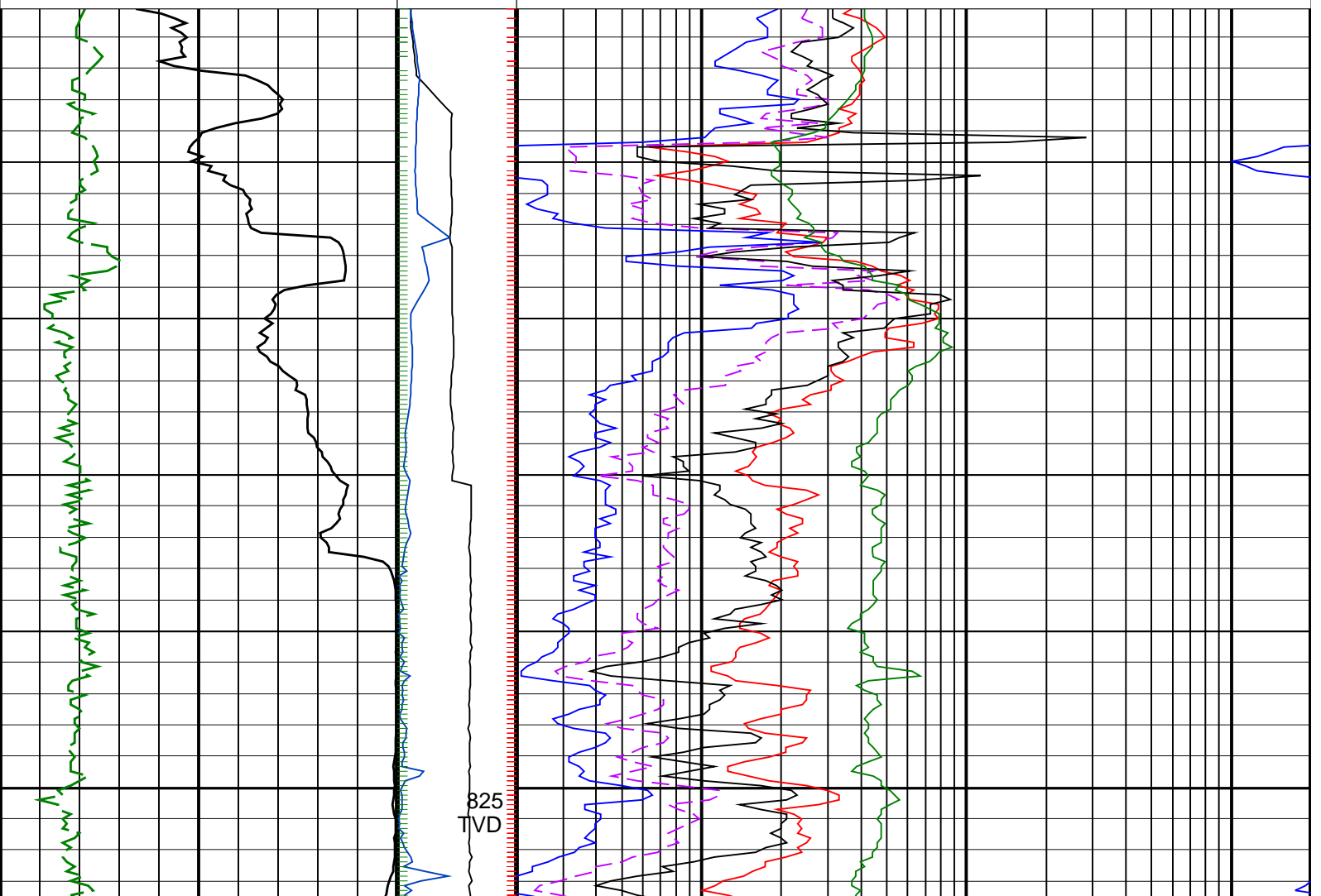
IDEAL Version: ID13_OC_11 <TVD> Vertical Scale: 1:200

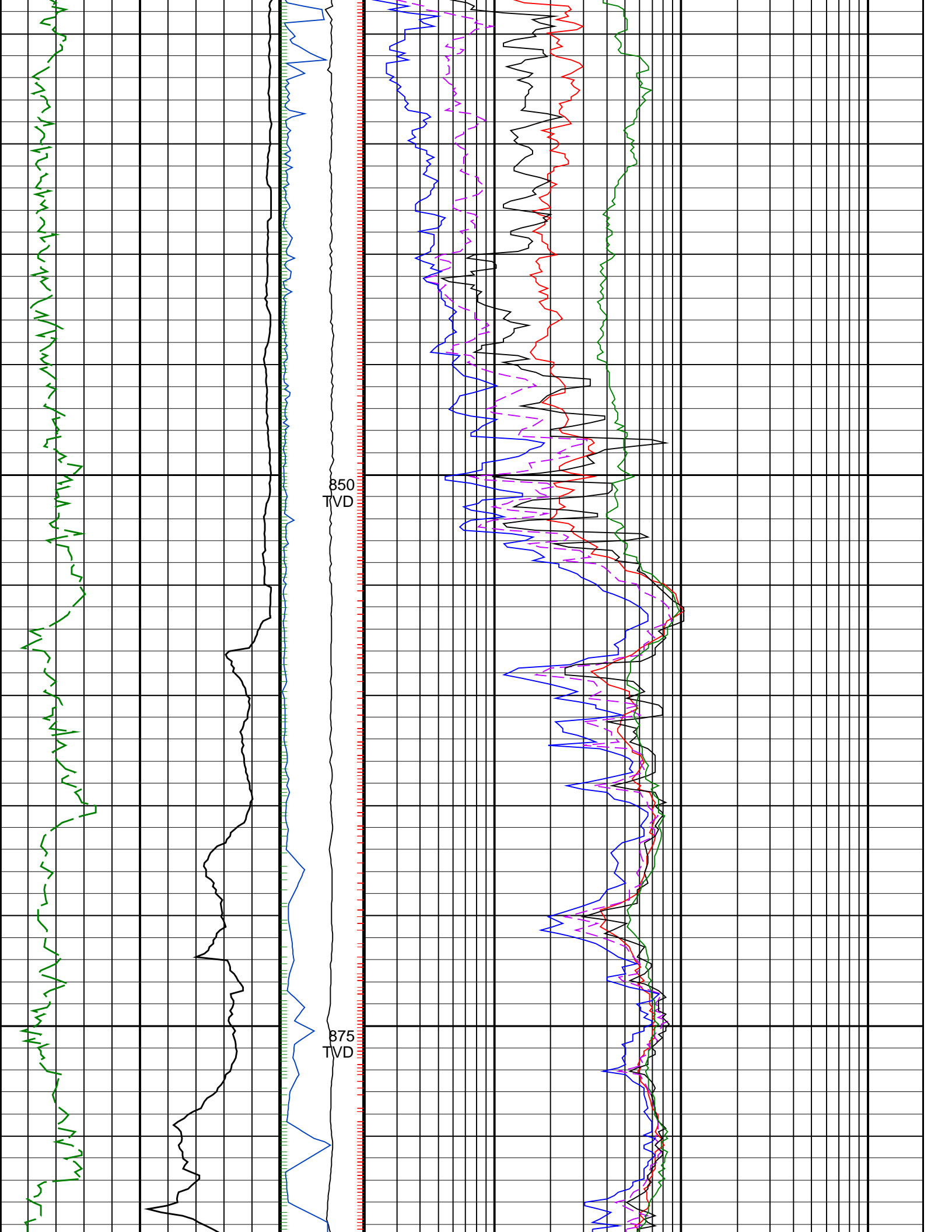
Graphics File Created: 08-Oct-2008 01:36

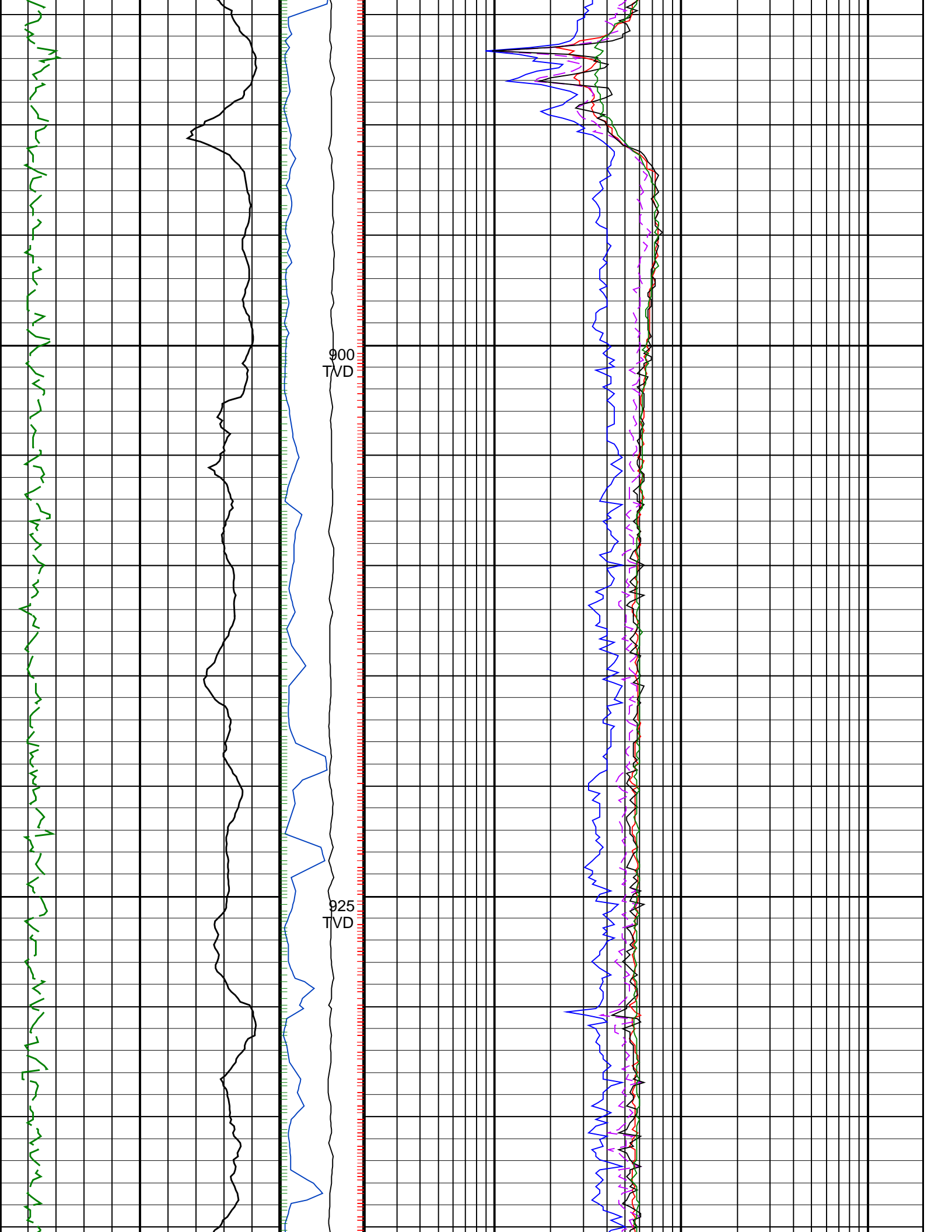
PIP SUMMARY

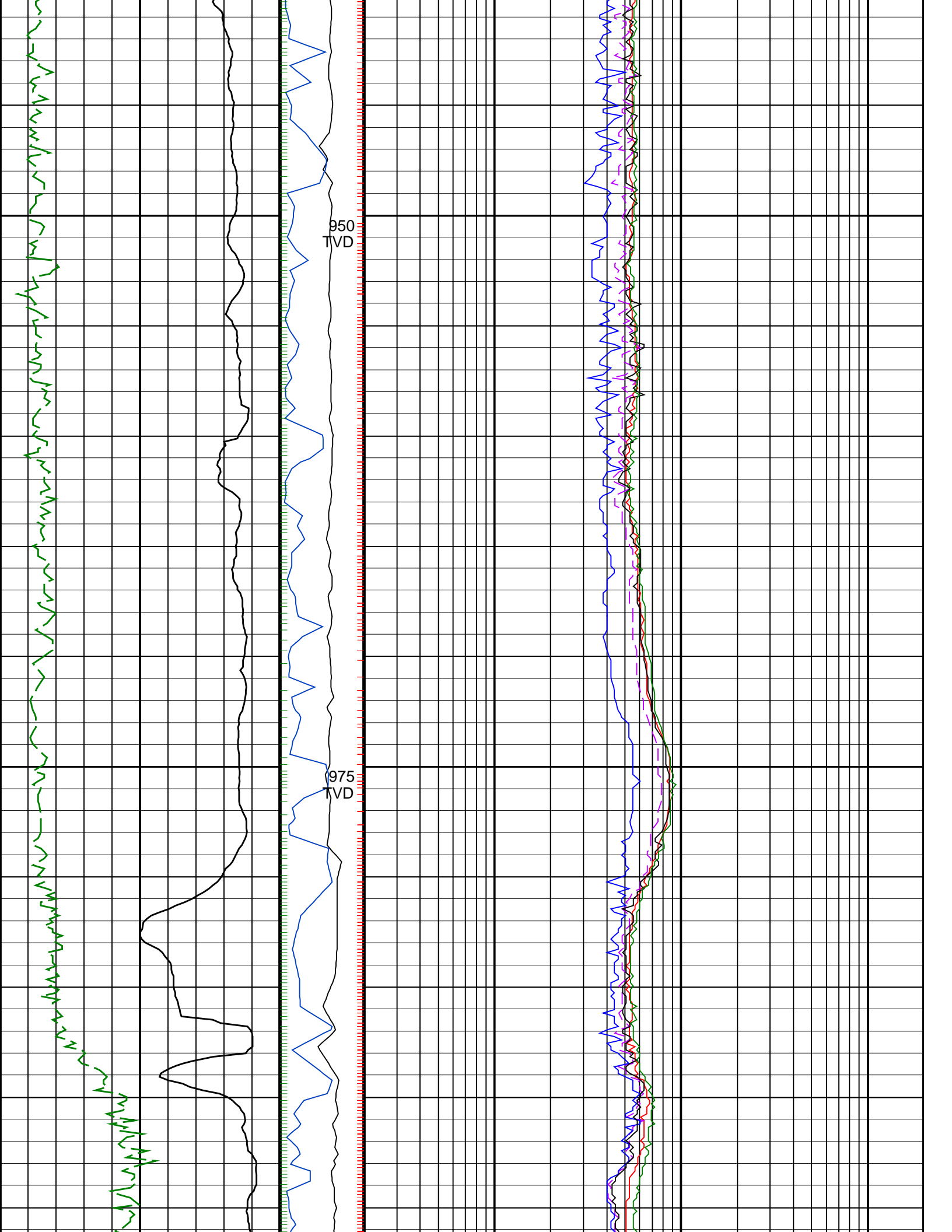
- ┆ ARC Gamma Ray Samples
- ┆ ARC Resistivity Samples
- ┆ IMP RP28 PIP

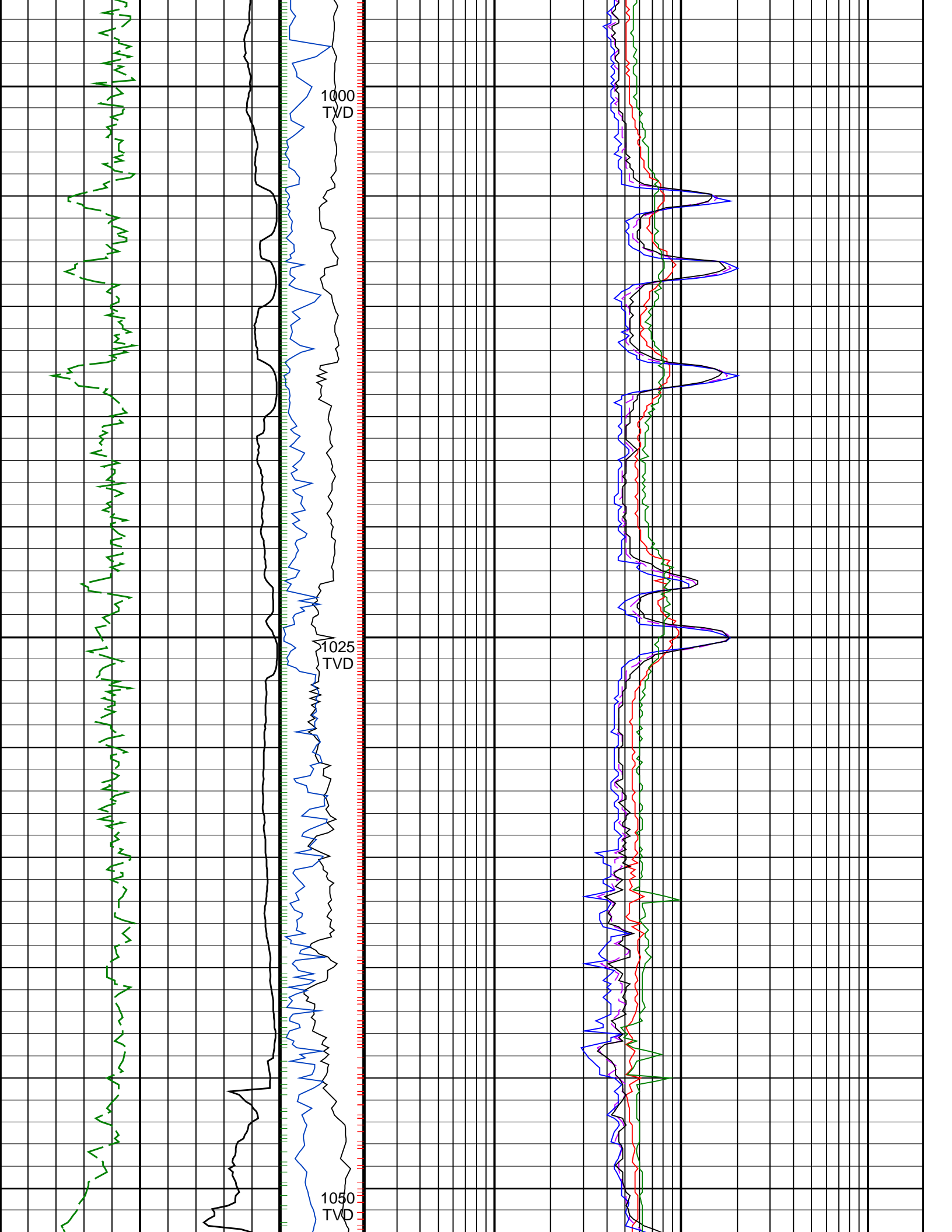
		ARC BHCorr Attenuation Resistivity 40-in. at 400 KHz, Real-Time (A40L_RT)	
		0.2	200
		(OHMM)	
		ARC BHCorr Phase-Shift Resistivity 40-in. at 2 MHz, Real-Time (P40H_RT)	
		0.2	200
		(OHMM)	
		ARC BHCorr Phase-Shift Resistivity 16-in. at 2 MHz, Real-Time (P16H_RT)	
		0.2	200
		(OHMM)	
ARC Gamma Ray, Real-Time (ARC_GR_RT)	MWD Collar RPM (CRPM_RT) (RPM)	ARC BHCorr Phase-Shift Resistivity 28-in. at 2 MHz, Real-Time (P28H_RT)	
0	0	0.2	200
(GAPI)	200	(OHMM)	
ROP*5 (ROP5)	PKPK_RPM (Stick_RT) (RPM)	ARC BHCorr Attenuation Resistivity 40-in. at 2 MHz, Real-Time (A40H_RT)	
200	0	0.2	200
(M/HR)	400	(OHMM)	

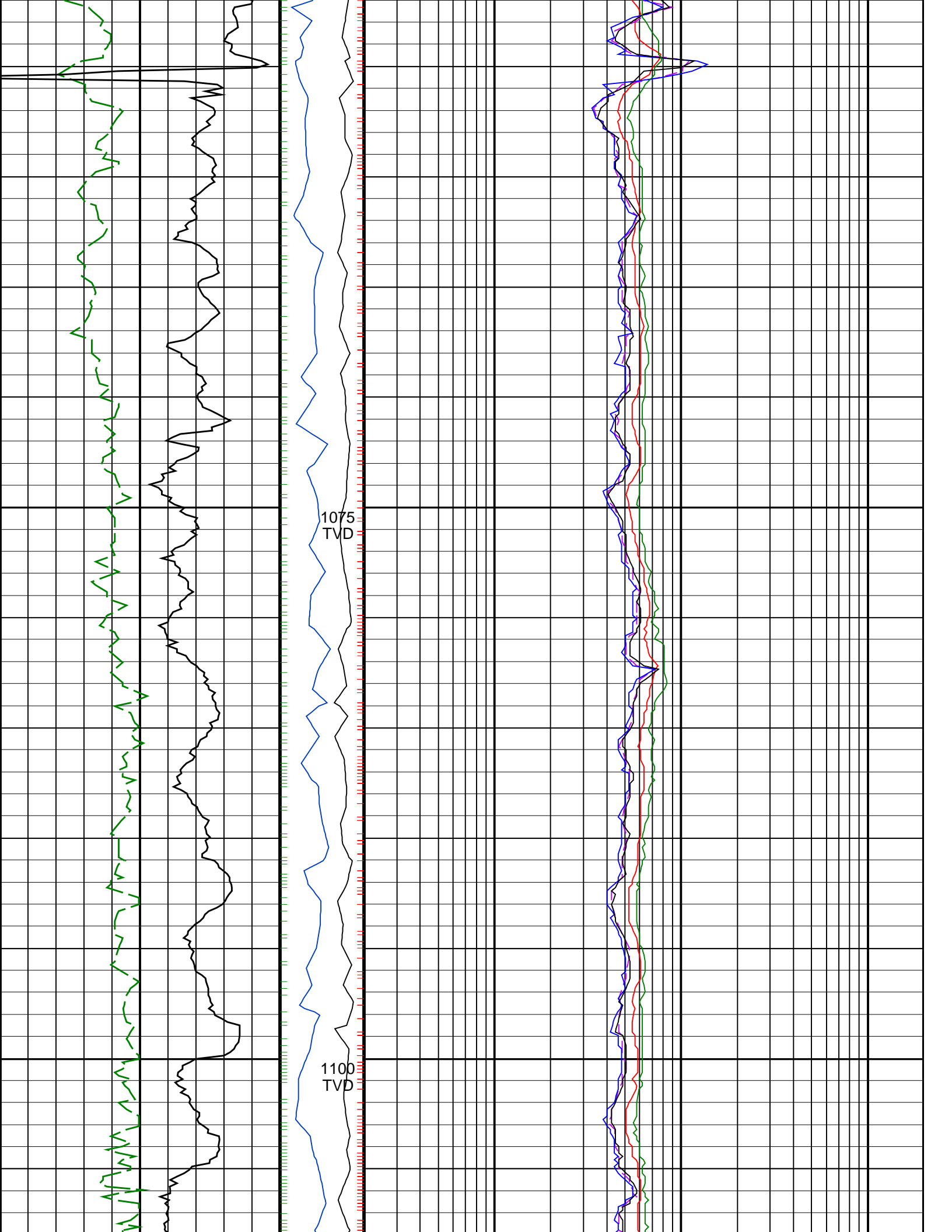


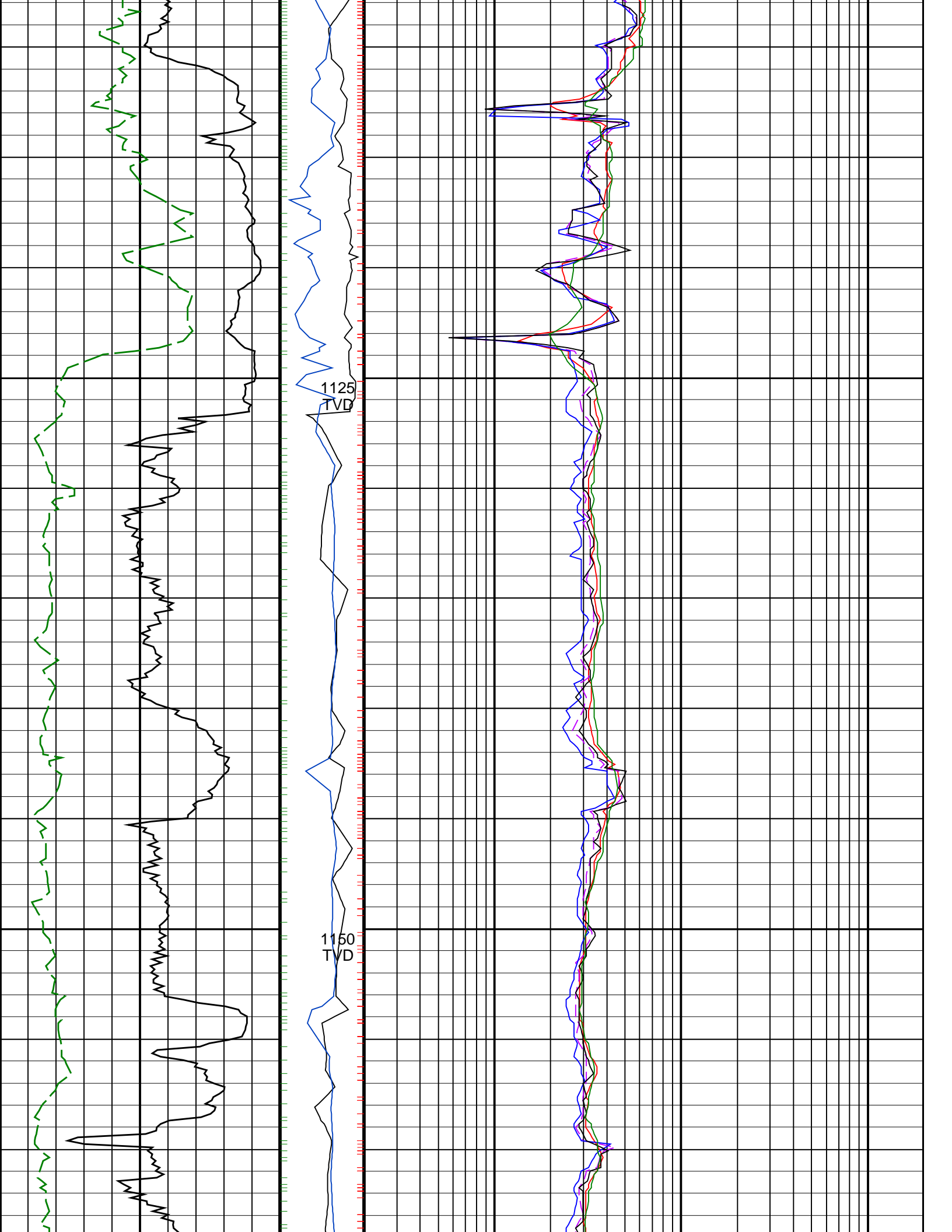


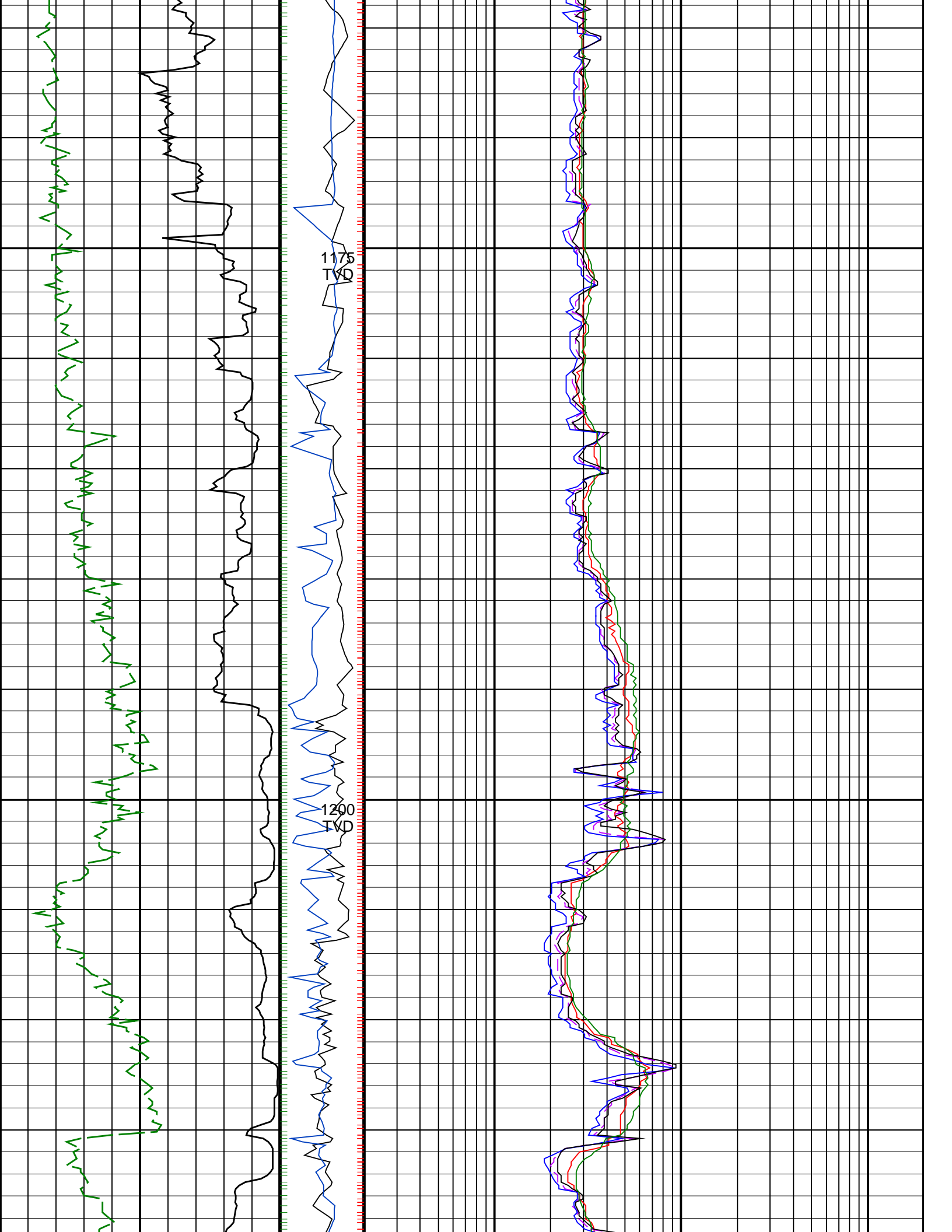


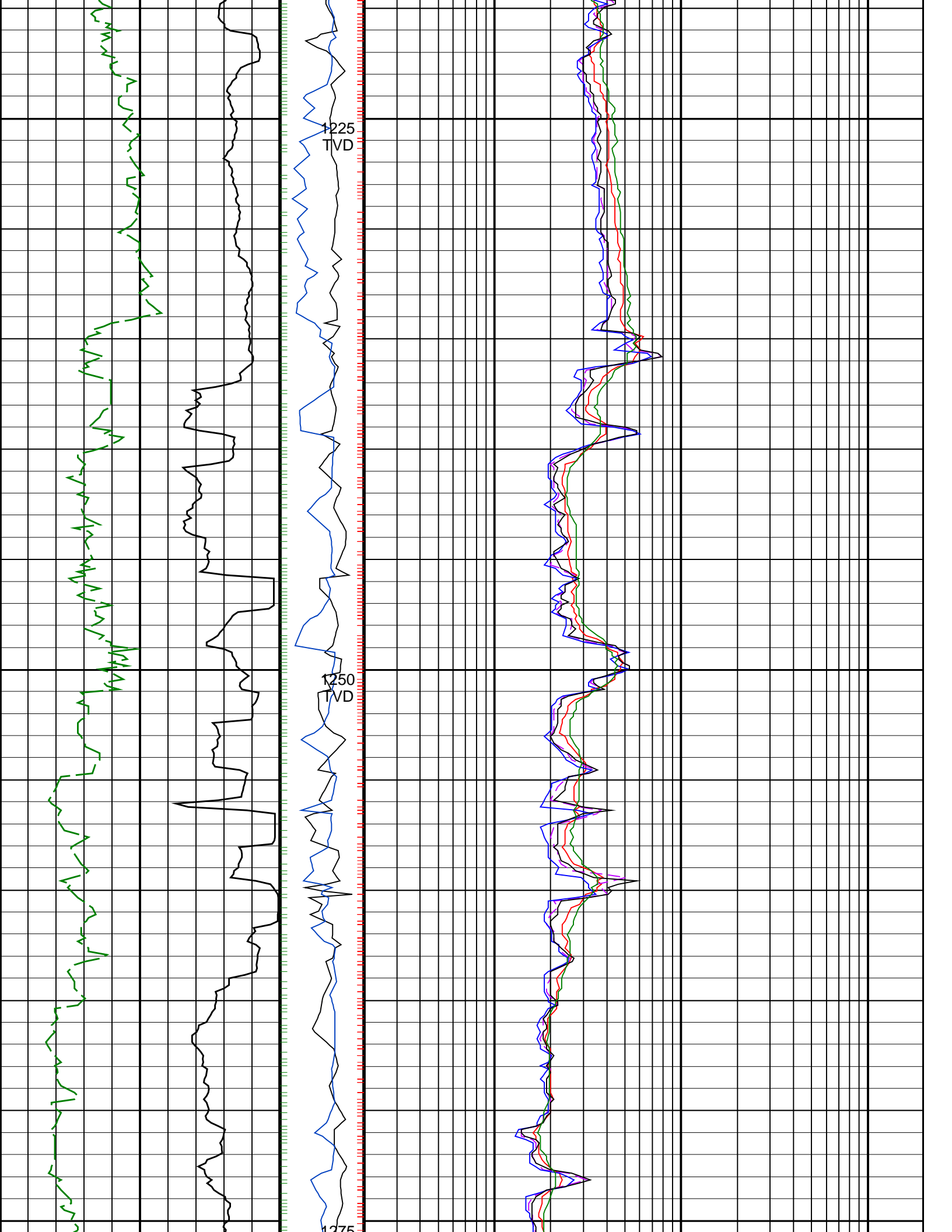


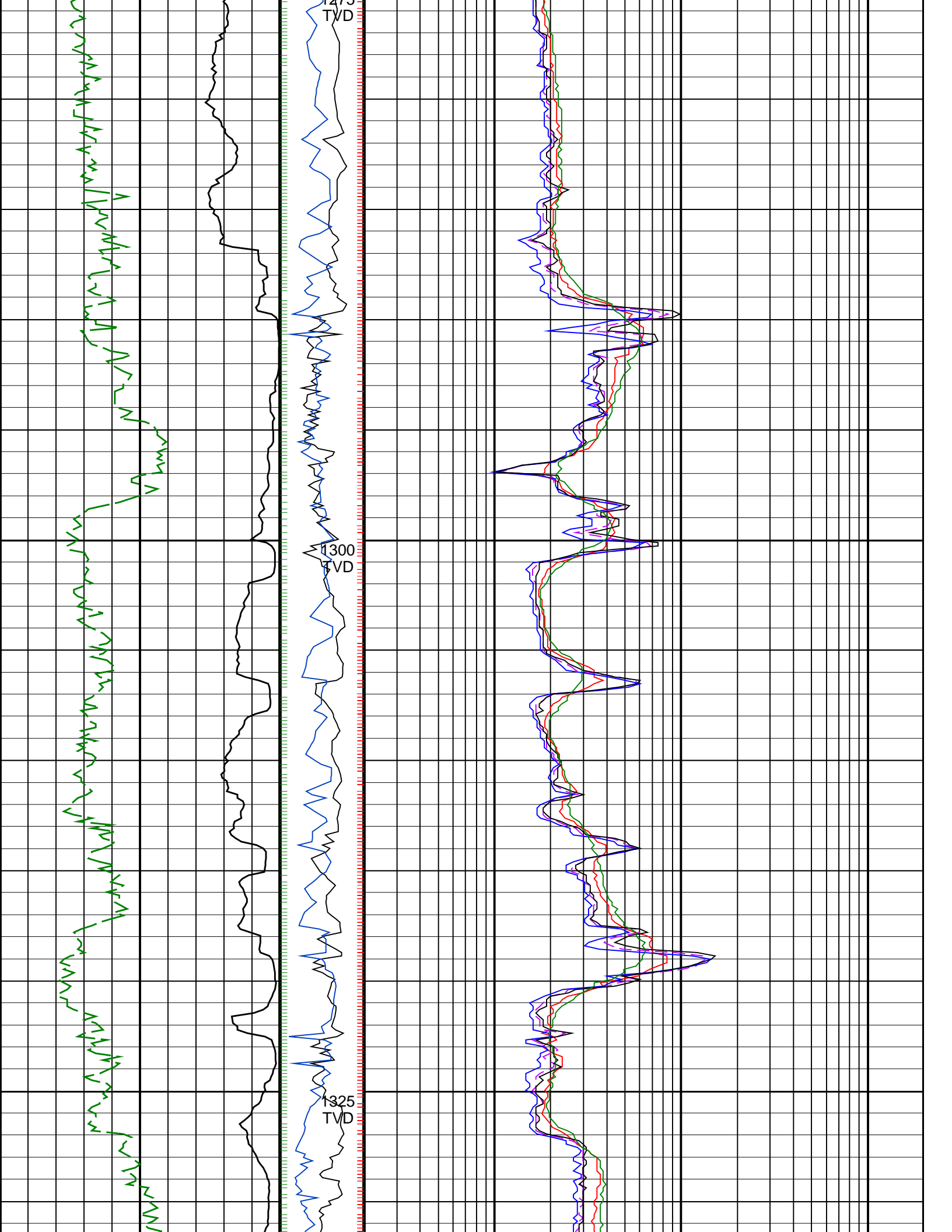


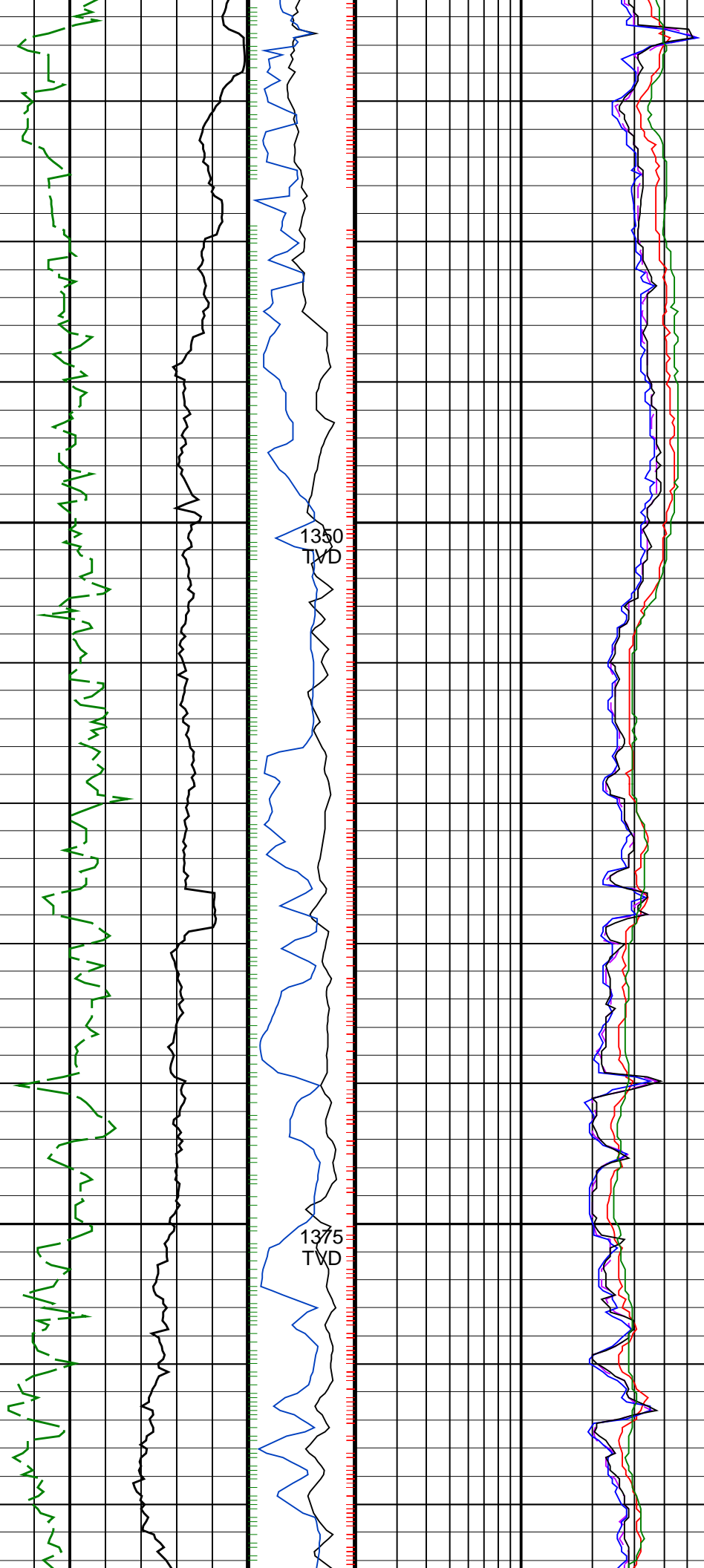


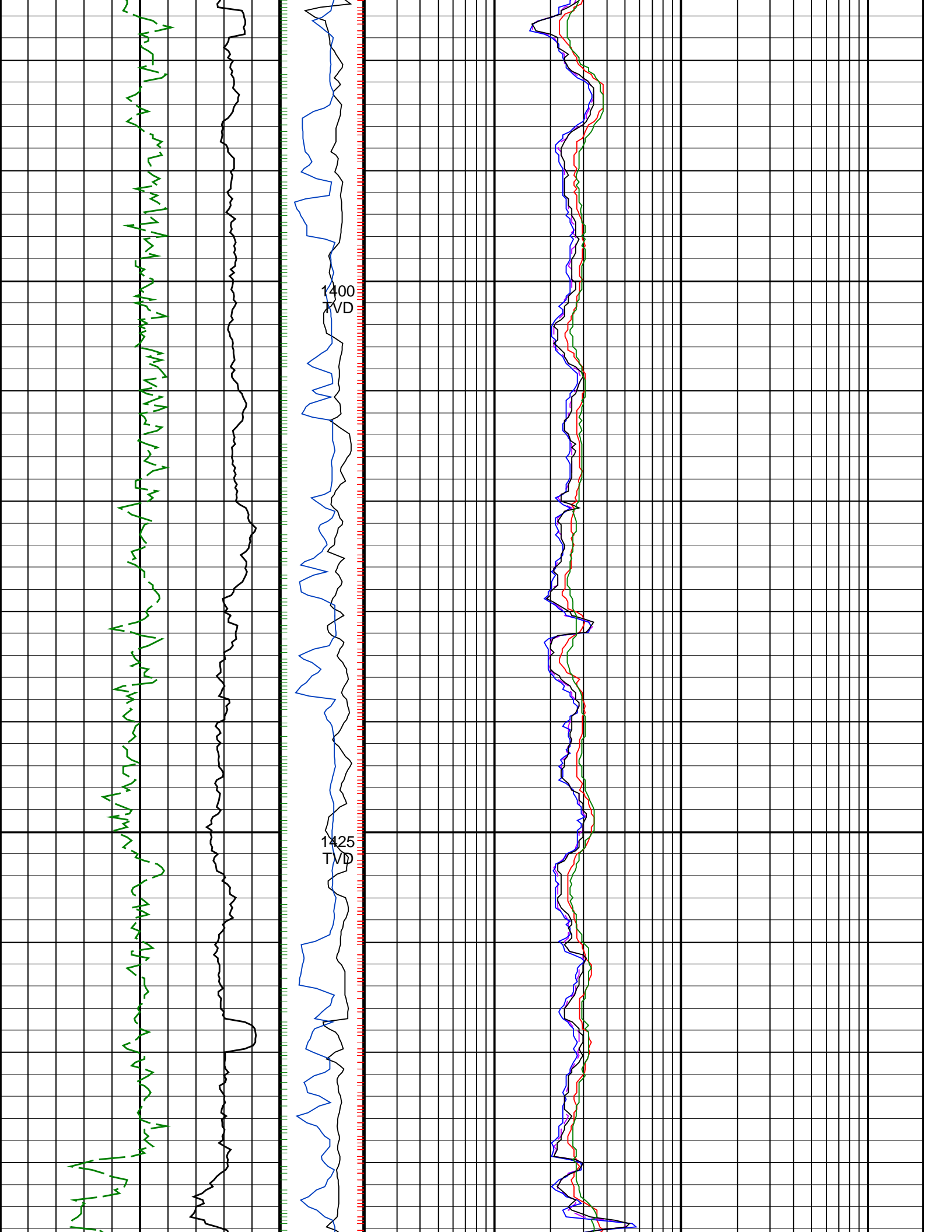


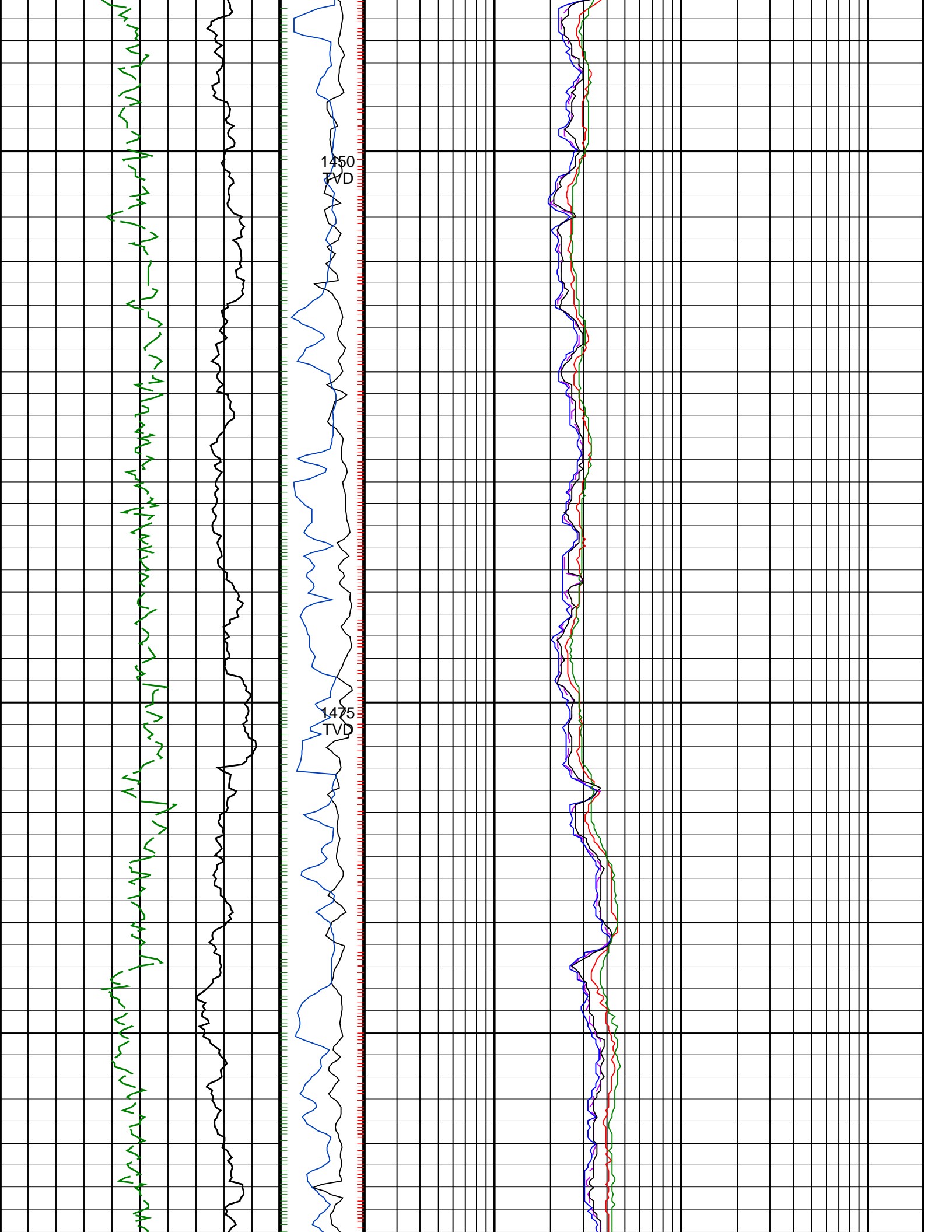


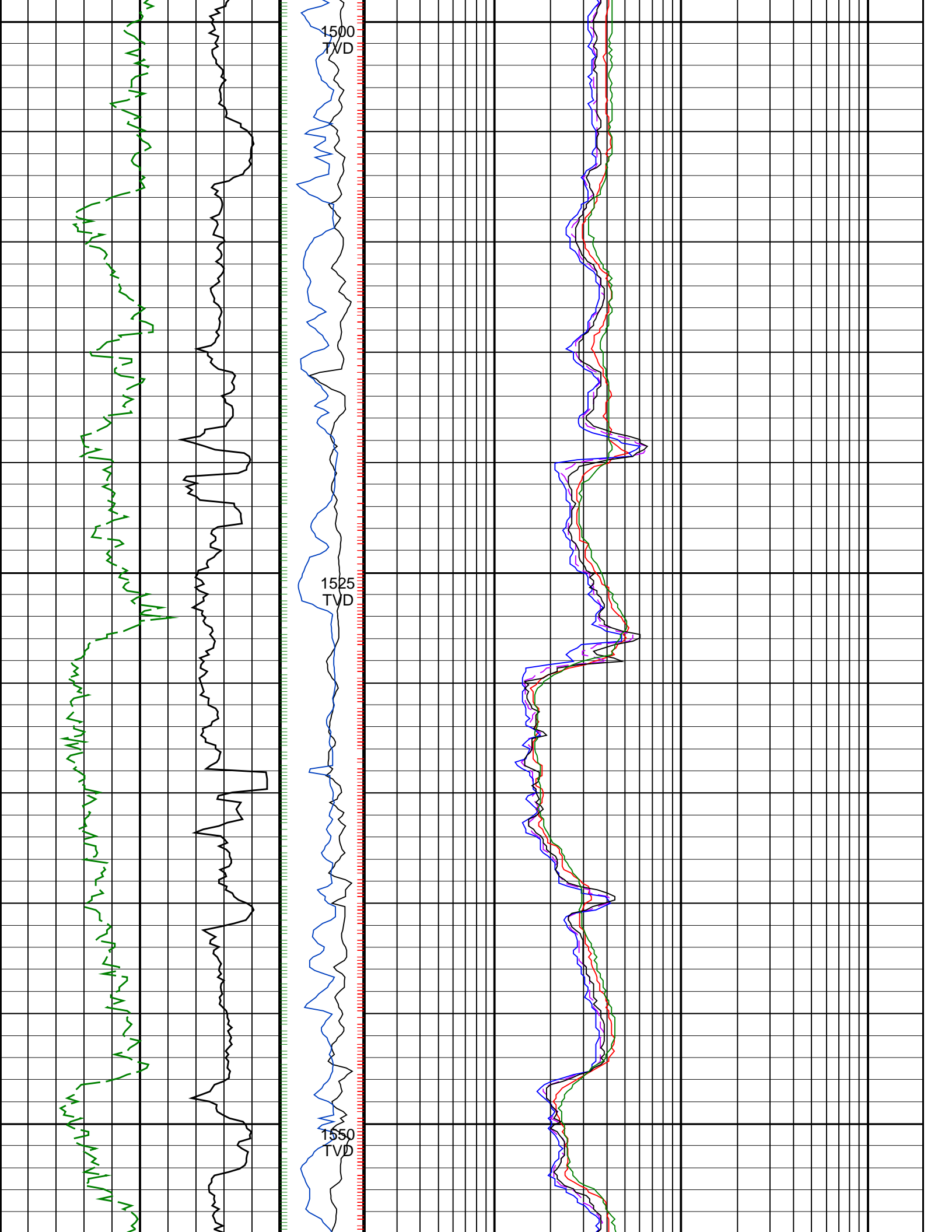


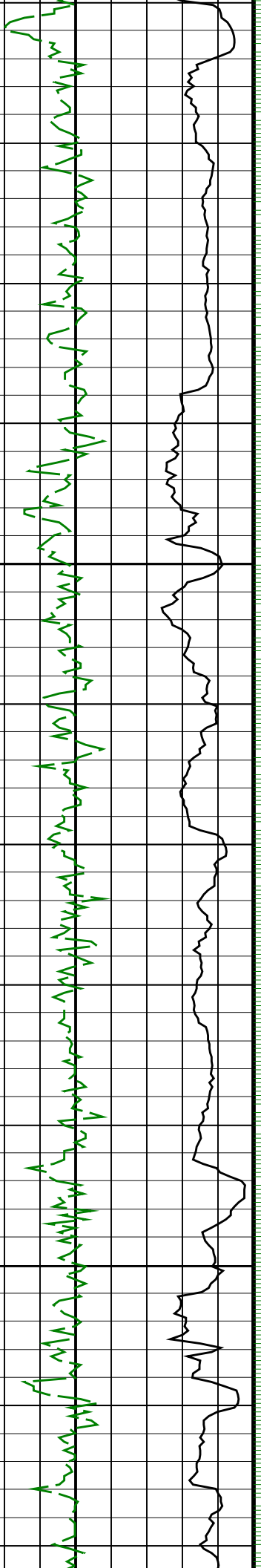






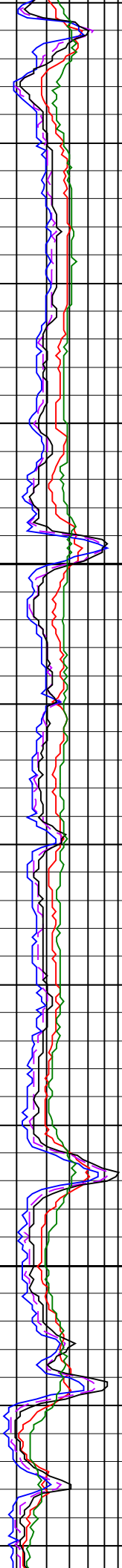


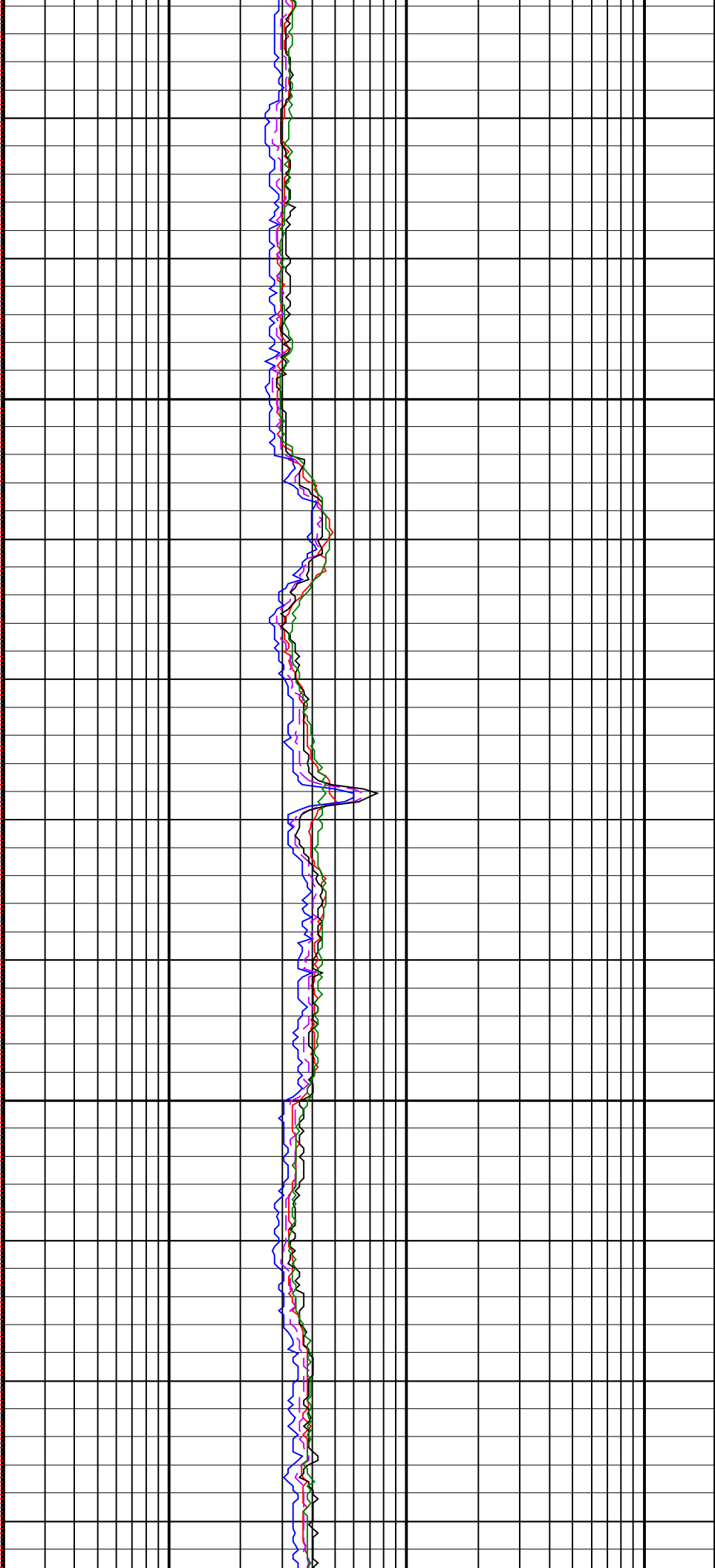
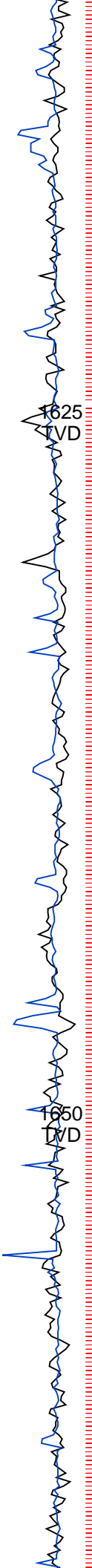
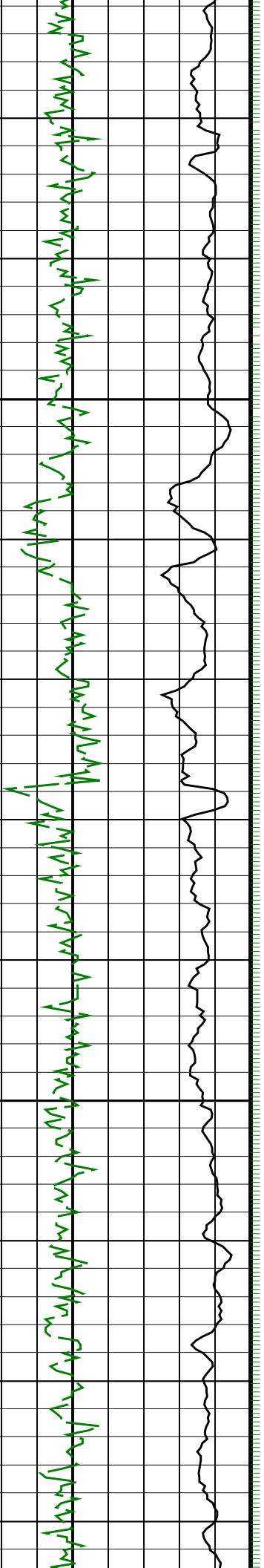


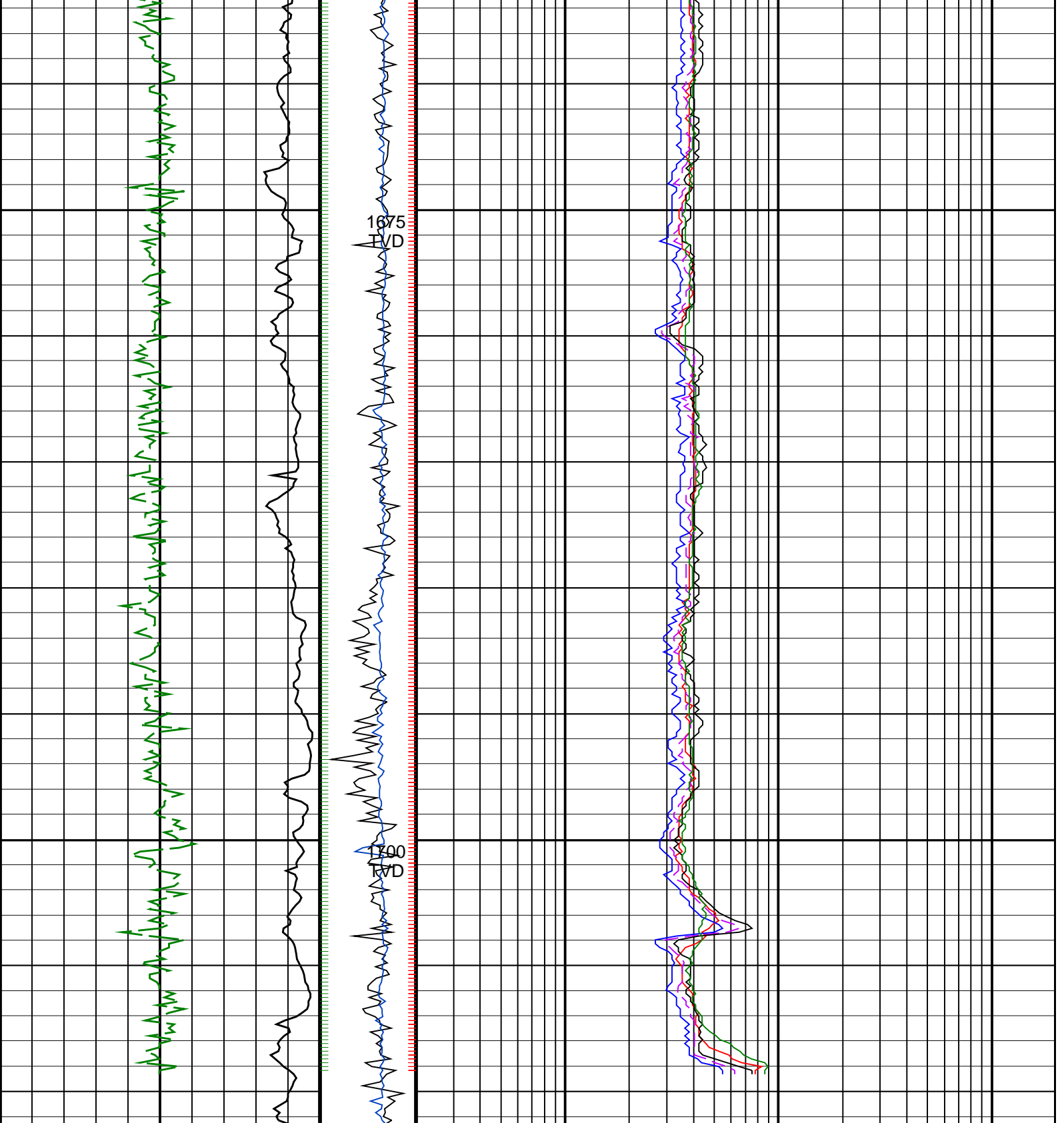


75
D

75
D







<p>ROP*5 (ROP5) (M/HR)</p> <p>0 200</p>	<p>PKPK_RPM (Stick_RT) (RPM)</p> <p>0 400</p>	<p>ARC BHCorr Attenuation Resistivity 40-in. at 2 MHz, Real-Time (A40H_RT) (OHMM)</p> <p>0.2 200</p>
<p>ARC Gamma Ray, Real-Time (ARC_GR_RT) (GAPI)</p> <p>0 200</p>	<p>MWD Collar RPM (CRPM_RT) (RPM)</p> <p>0 200</p>	<p>ARC BHCorr Phase-Shift Resistivity 28-in. at 2 MHz, Real-Time (P28H_RT) (OHMM)</p> <p>0.2 200</p>
	<p>ARC BHCorr Phase-Shift Resistivity 16-in. at 2 MHz, Real-Time (P16H_RT) (OHMM)</p> <p>0.2 200</p>	<p>ARC BHCorr Phase-Shift Resistivity 40-in. at 2 MHz, Real-Time (P40H_RT) (OHMM)</p> <p>0.2 200</p>

0.2

(OHMM)

200

ARC BHCorr Attenuation Resistivity 40-in. at 400 KHz, Real-Time (A40L_RT)

0.2

(OHMM)

200

PIP SUMMARY

- ┆ ARC Gamma Ray Samples
- ┆ ARC Resistivity Samples
- ┆ IMP RP28 PIP