

# Henry2DW1ST1 LWD RT 500MD

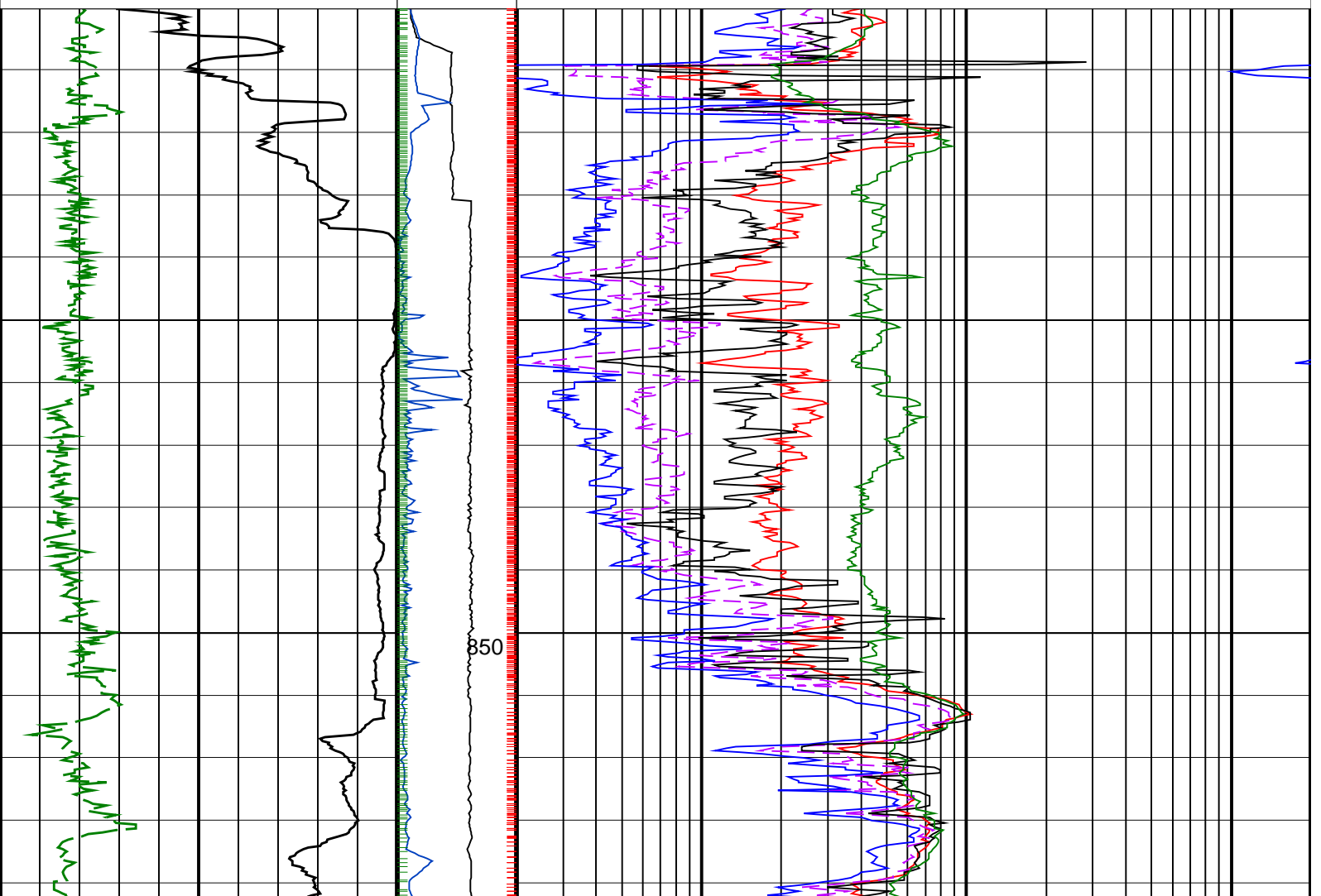
IDEAL Version: ID13\_0C\_11 <MD > Vertical Scale: 1:500

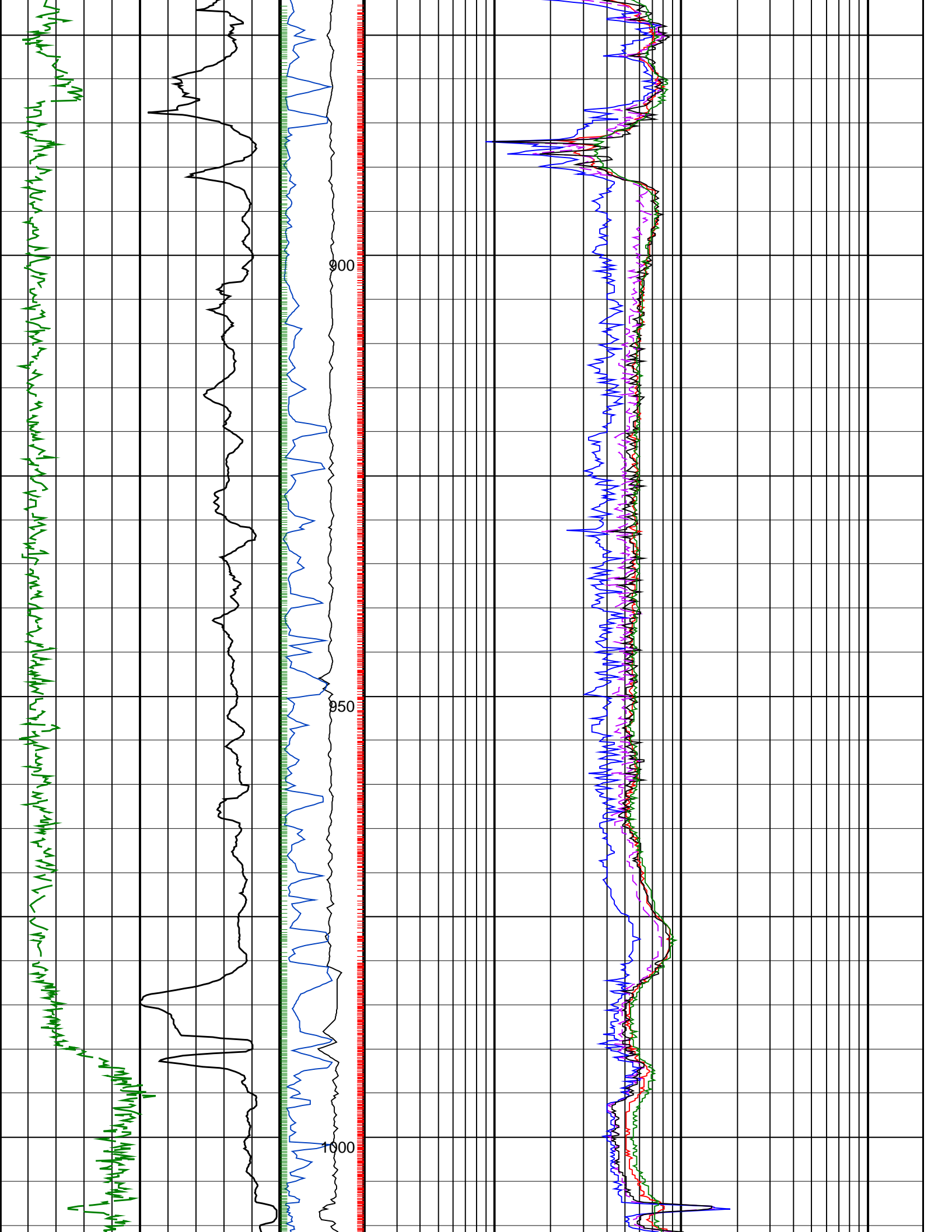
Graphics File Created: 08-Oct-2008 01:40

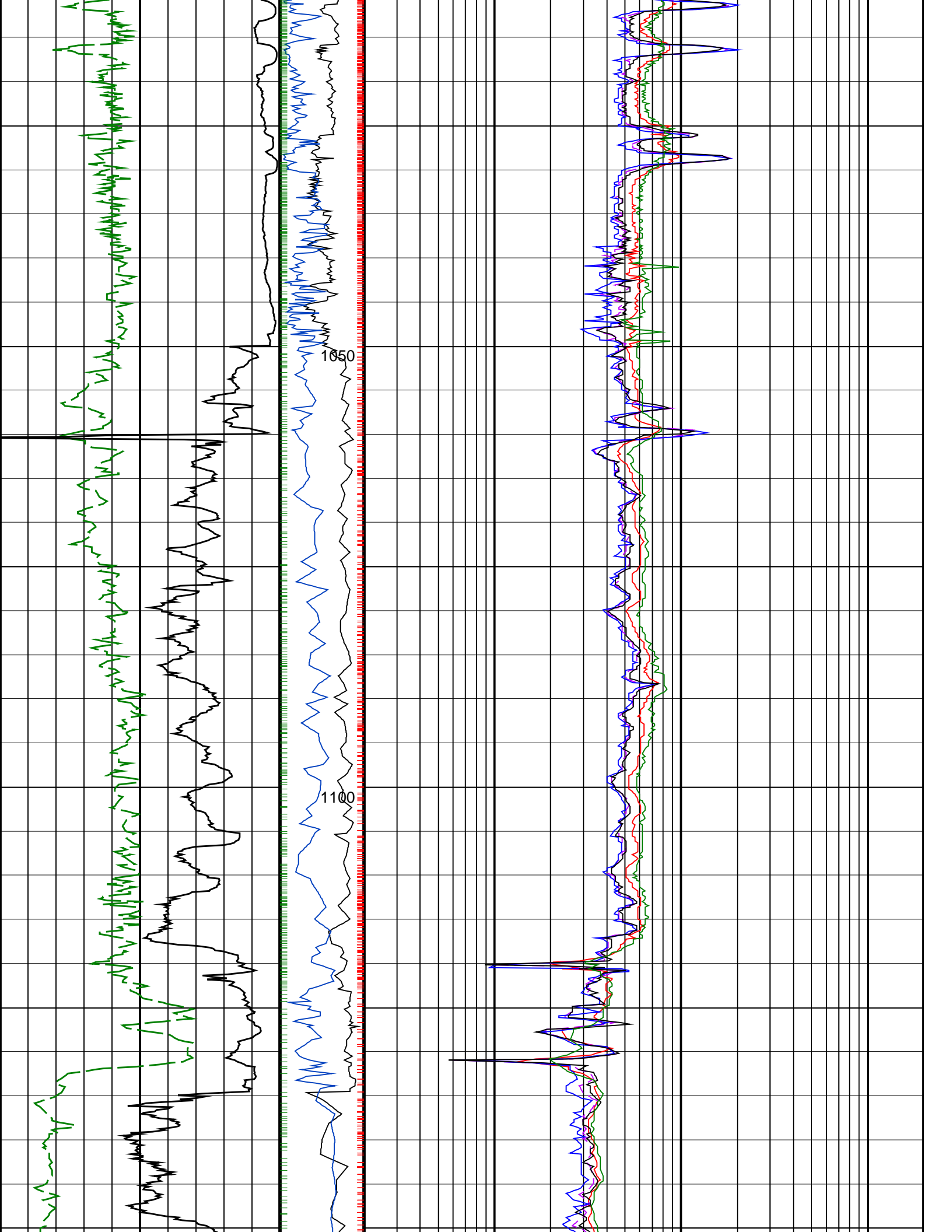
## PIP SUMMARY

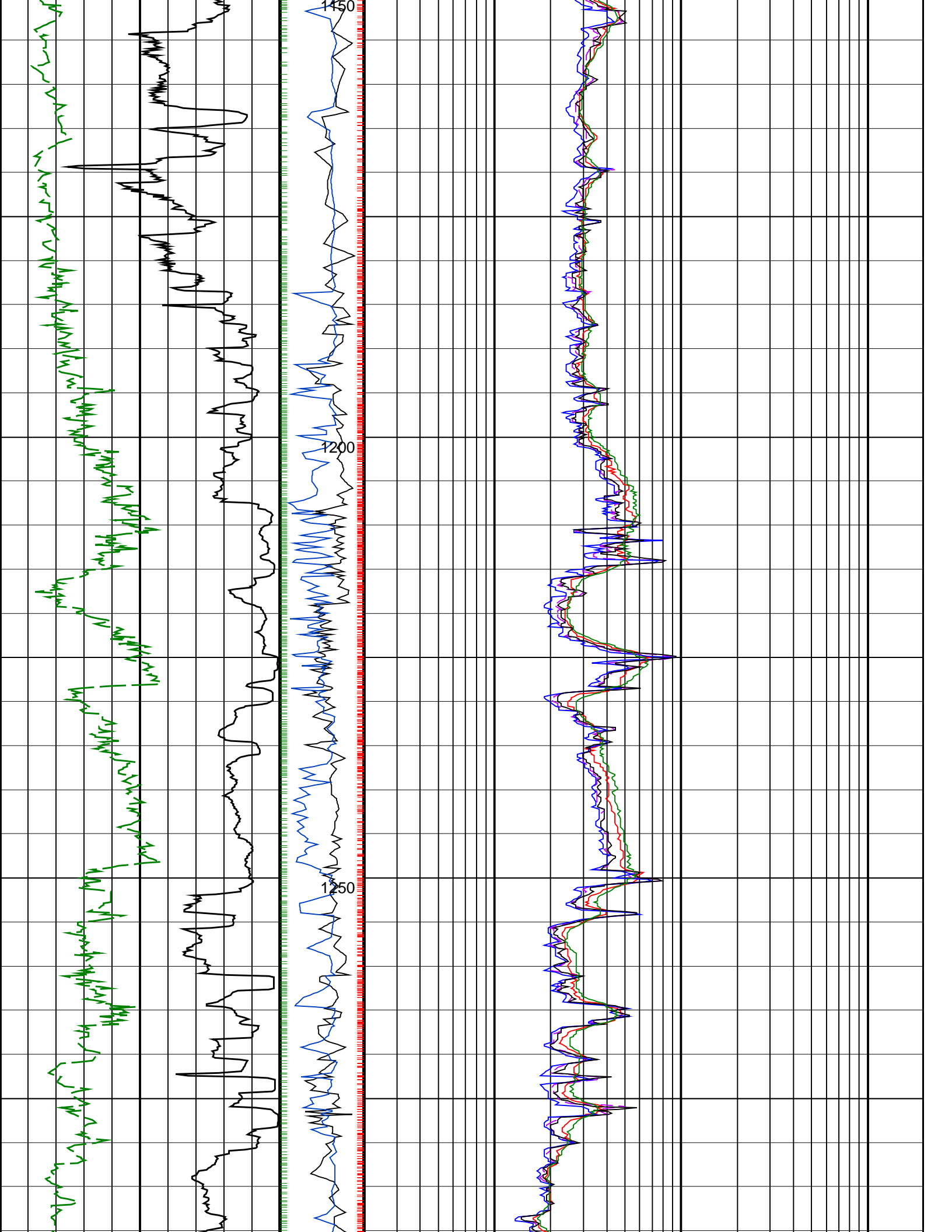
- ┆ ARC Gamma Ray Samples
- ┆ ARC Resistivity Samples
- ┆ IMP RP28 PIP

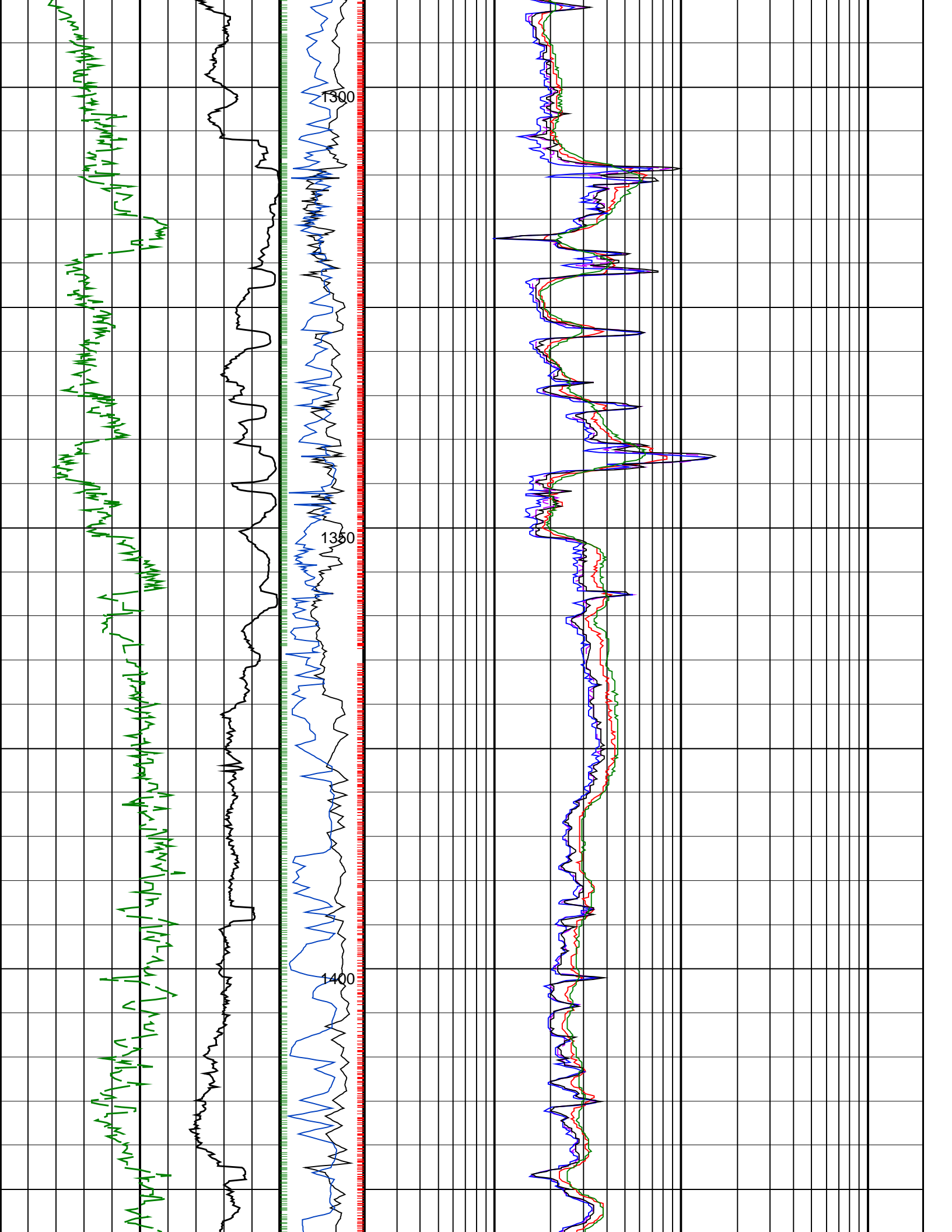
		<b>ARC BHCorr Attenuation Resistivity 40-in. at 400 KHz, Real-Time (A40L_RT)</b>	
0.2		(OHMM)	200
		<b>ARC BHCorr Phase-Shift Resistivity 40-in. at 2 MHz, Real-Time (P40H_RT)</b>	
0.2		(OHMM)	200
		<b>ARC BHCorr Phase-Shift Resistivity 16-in. at 2 MHz, Real-Time (P16H_RT)</b>	
0.2		(OHMM)	200
<b>ARC Gamma Ray, Real-Time (ARC_GR_RT)</b>	<b>MWD Collar RPM (CRPM_RT) (RPM)</b>	<b>ARC BHCorr Phase-Shift Resistivity 28-in. at 2 MHz, Real-Time (P28H_RT)</b>	
0 (GAPI) 200	0 200	0.2	(OHMM) 200
<b>ROP*5 (ROP5) (M/HR)</b>	<b>PKPK_RPM (Stick_RT) (RPM)</b>	<b>ARC BHCorr Attenuation Resistivity 40-in. at 2 MHz, Real-Time (A40H_RT)</b>	
200 0	0 400	0.2	(OHMM) 200

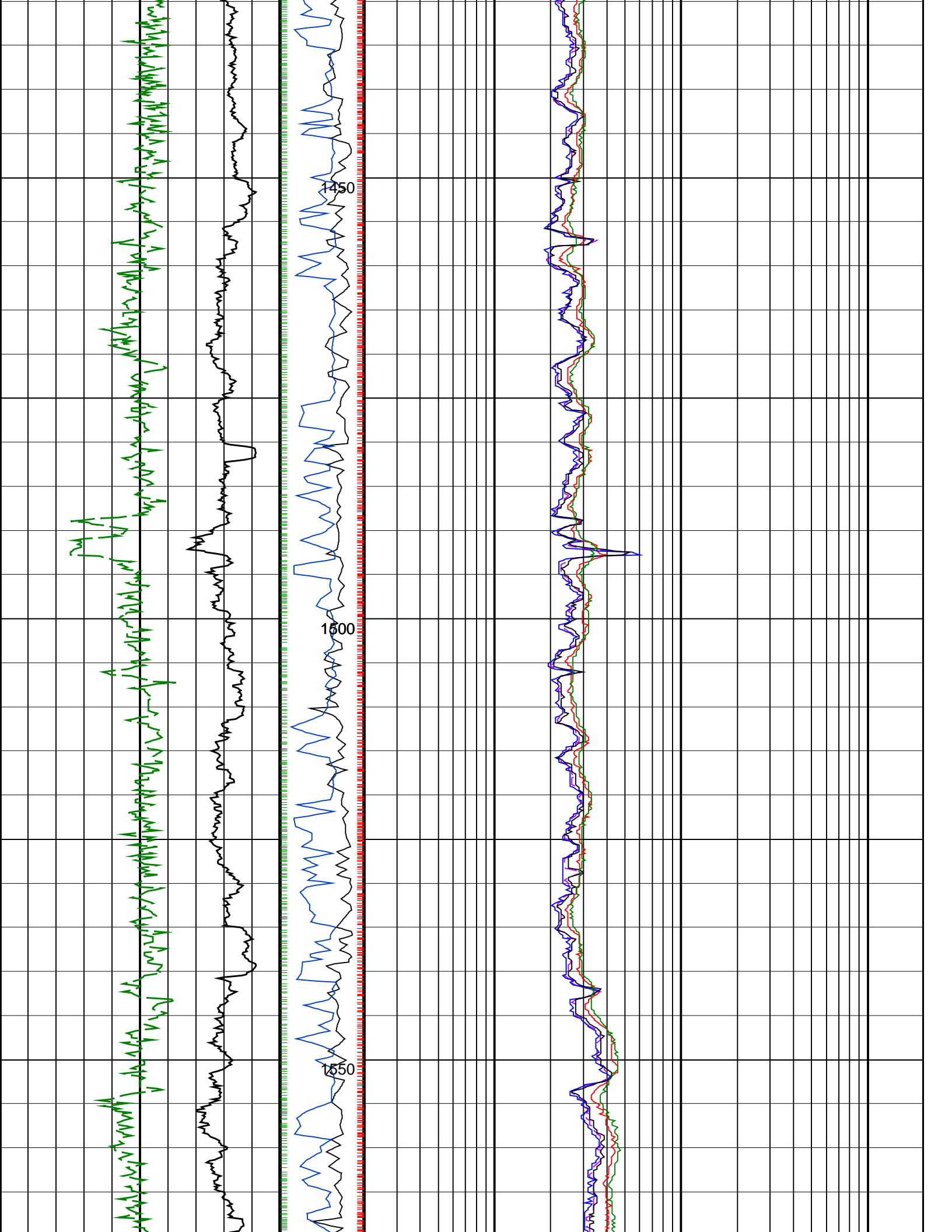


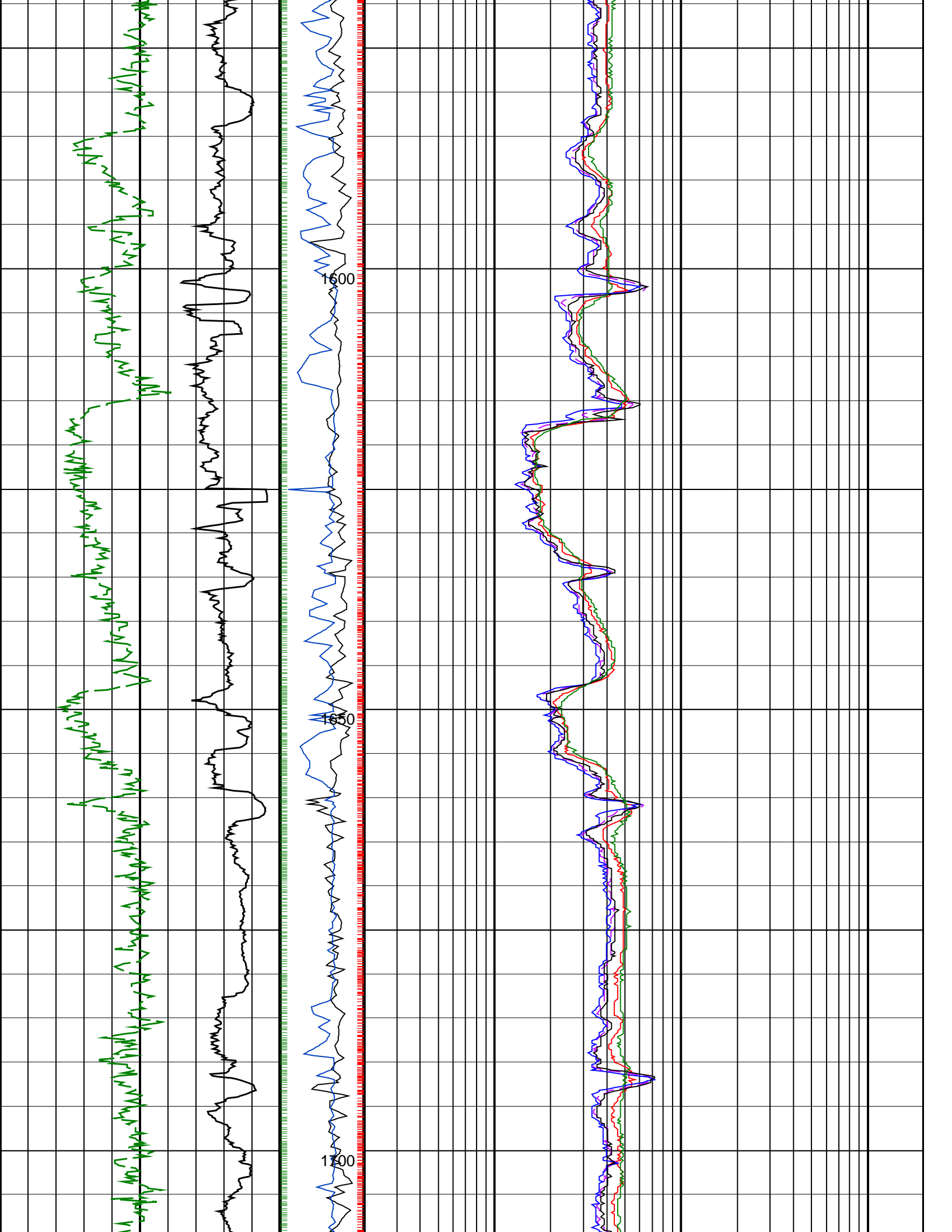


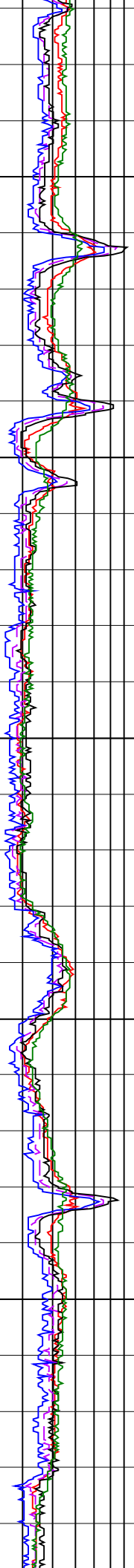
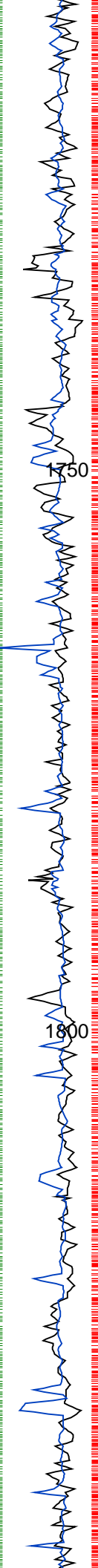
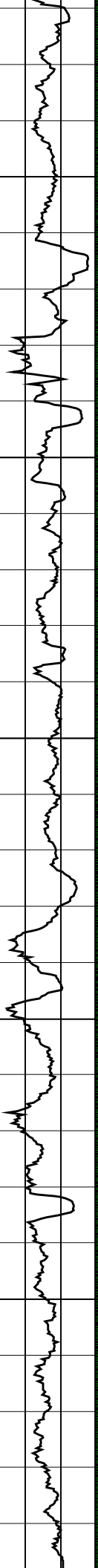
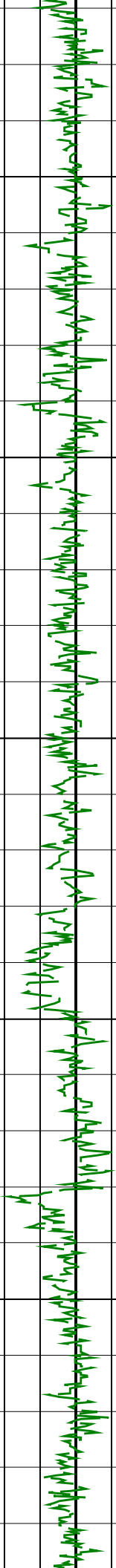




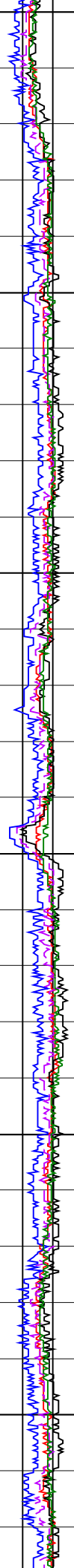
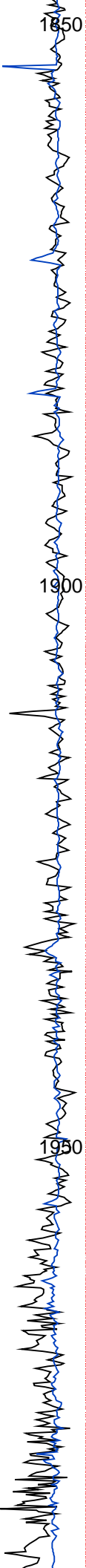
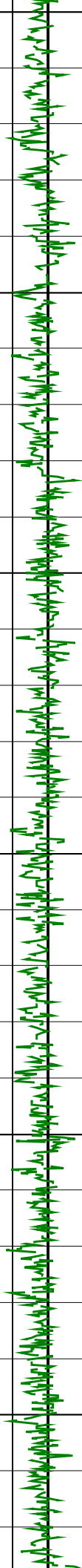


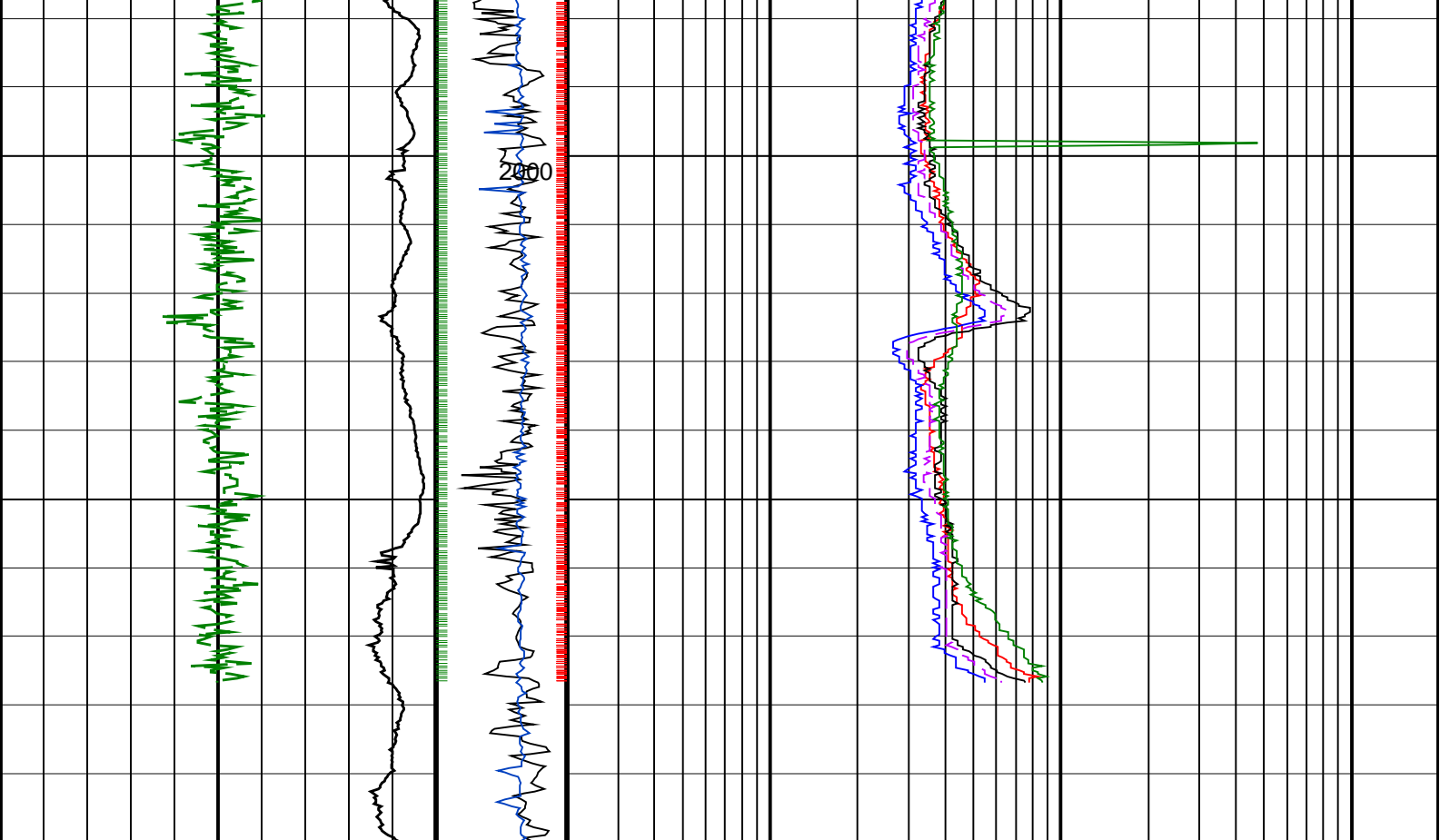












<p>ROP*5 (ROP5) (M/HR)</p> <p>200 0</p>	<p>PKPK RPM (Stick_RT) (RPM)</p> <p>0 400</p>	<p>ARC BHCorr Attenuation Resistivity 40-in. at 2 MHz, Real-Time (A40H_RT) (OHMM)</p> <p>0.2 200</p>
<p>ARC Gamma Ray, Real-Time (ARC_GR_RT) (GAPI)</p> <p>0 200</p>	<p>MWD Collar RPM (CRPM_RT) (RPM)</p> <p>0 200</p>	<p>ARC BHCorr Phase-Shift Resistivity 28-in. at 2 MHz, Real-Time (P28H_RT) (OHMM)</p> <p>0.2 200</p>
		<p>ARC BHCorr Phase-Shift Resistivity 16-in. at 2 MHz, Real-Time (P16H_RT) (OHMM)</p> <p>0.2 200</p>
		<p>ARC BHCorr Phase-Shift Resistivity 40-in. at 2 MHz, Real-Time (P40H_RT) (OHMM)</p> <p>0.2 200</p>
		<p>ARC BHCorr Attenuation Resistivity 40-in. at 400 KHz, Real-Time (A40L_RT) (OHMM)</p> <p>0.2 200</p>

PIP SUMMARY

- ┆ ARC Gamma Ray Samples
- ┆ ARC Resistivity Samples
- ┆ IMP RP28 PIP