

Henry 2DW1ST1 LWD RT 500TVD

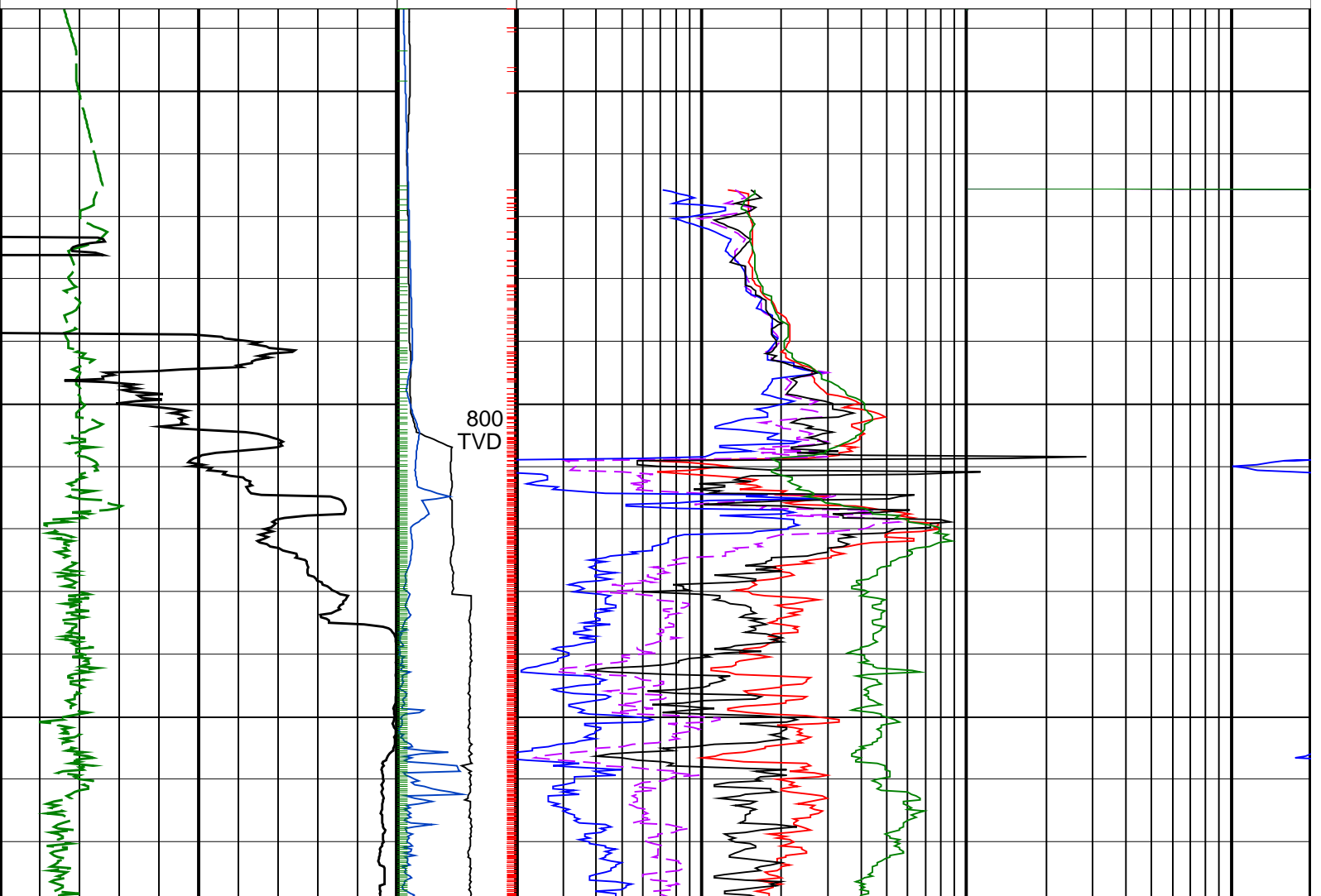
IDEAL Version: ID13_0C_11 <TVD> Vertical Scale: 1:500

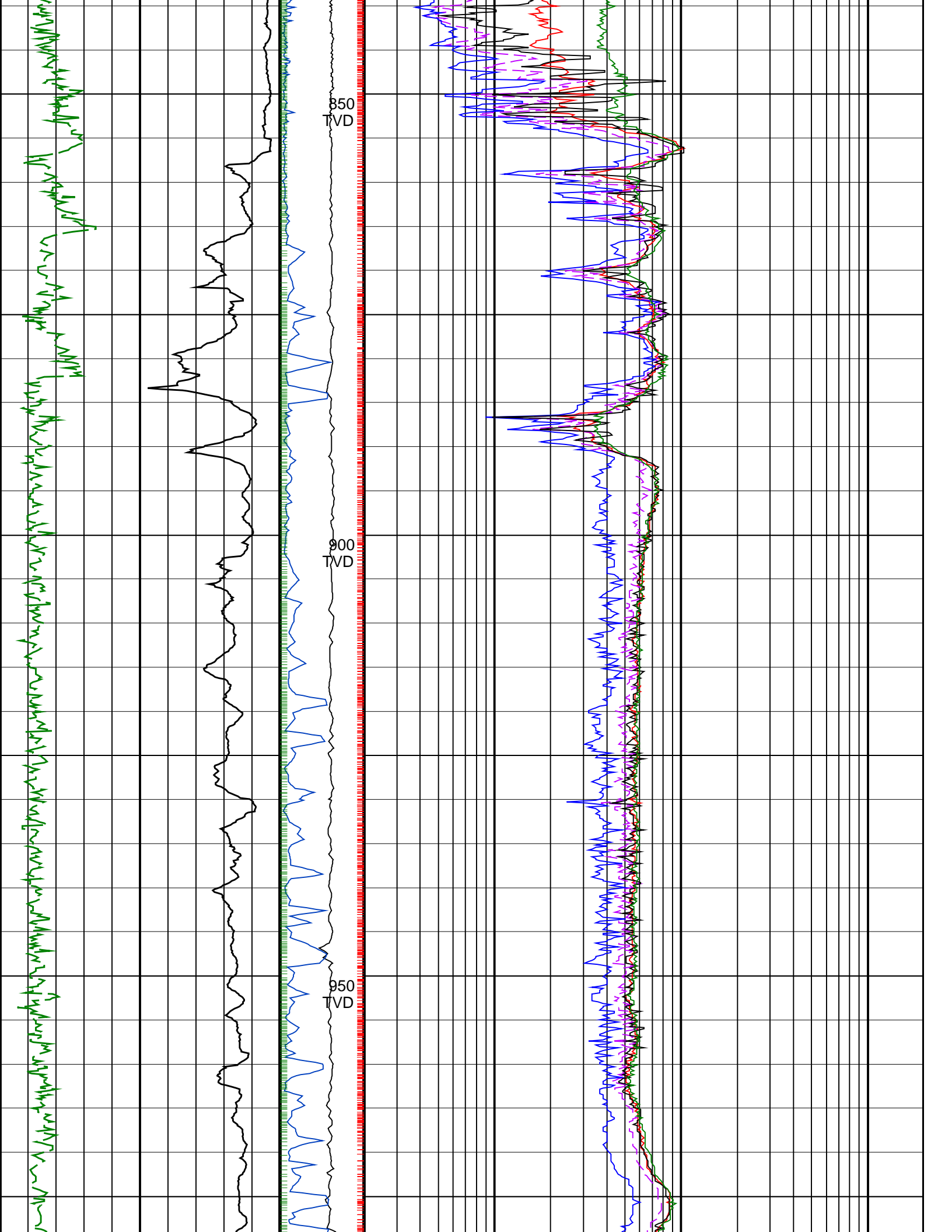
Graphics File Created: 07-Oct-2008 13:28

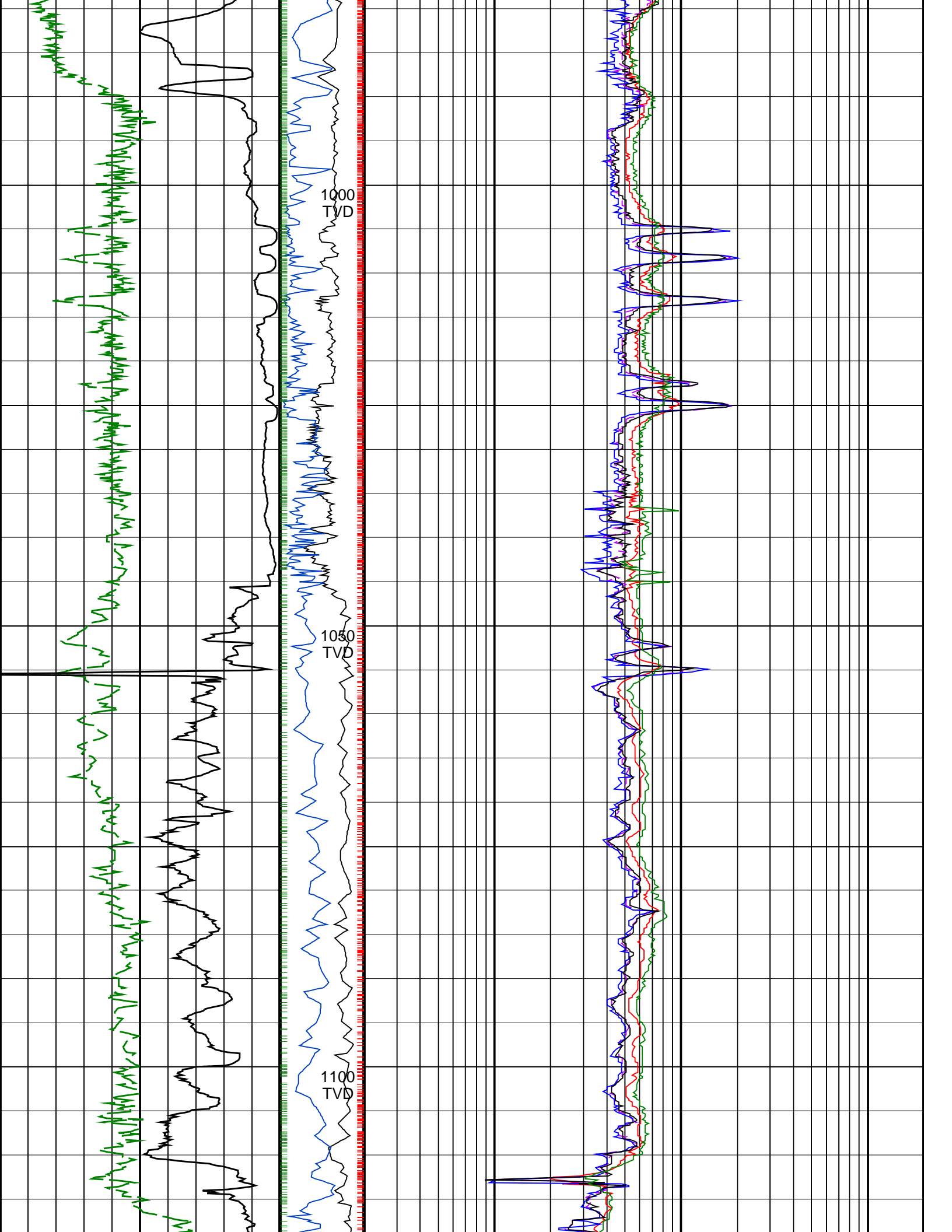
PIP SUMMARY

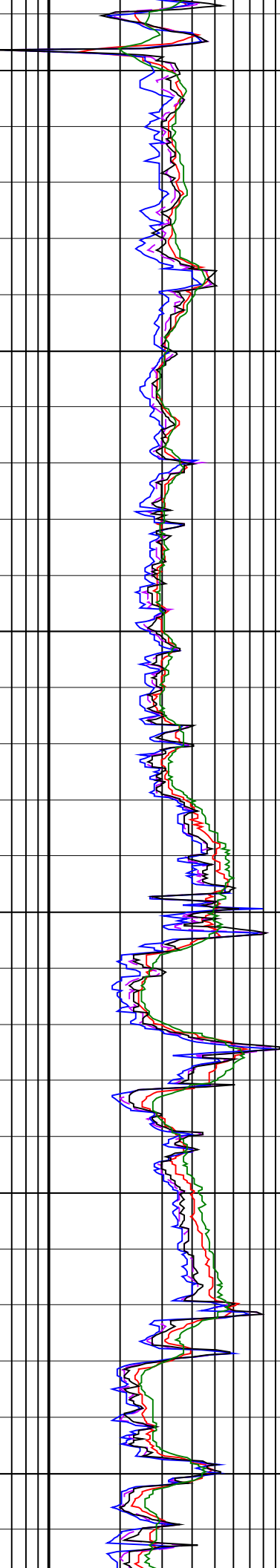
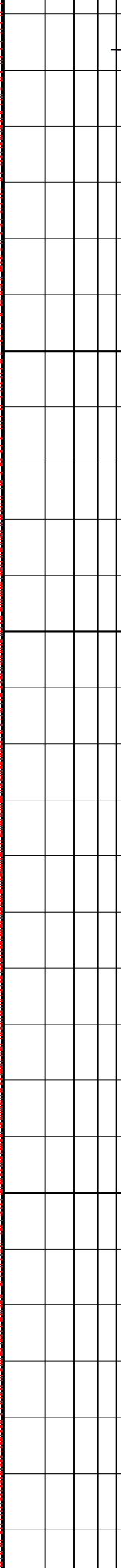
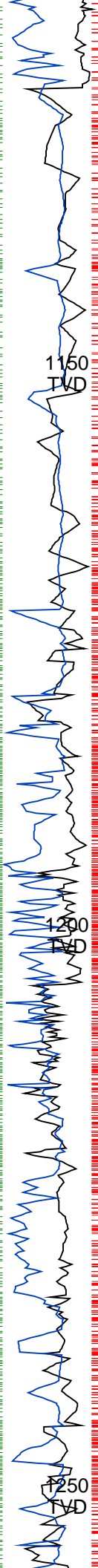
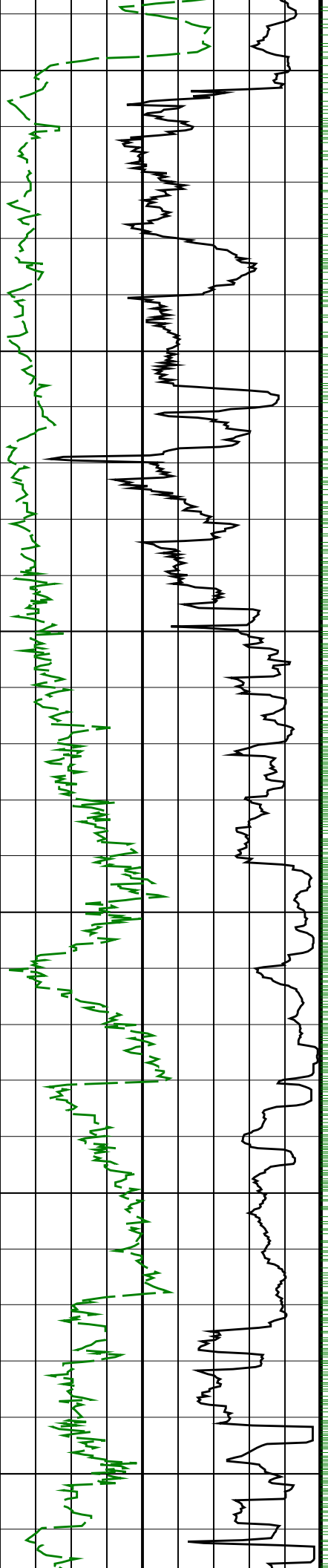
- ┆ ARC Gamma Ray Samples
- ┆ ARC Resistivity Samples
- ┆ IMP RP28 PIP

		ARC BHCorr Attenuation Resistivity 40-in. at 400 KHz, Real-Time (A40L_RT)	
		0.2	200
		(OHMM)	
		ARC BHCorr Phase-Shift Resistivity 40-in. at 2 MHz, Real-Time (P40H_RT)	
		0.2	200
		(OHMM)	
		ARC BHCorr Phase-Shift Resistivity 16-in. at 2 MHz, Real-Time (P16H_RT)	
		0.2	200
		(OHMM)	
ARC Gamma Ray, Real-Time (ARC_GR_RT)	MWD Collar RPM (CRPM_RT) (RPM)	ARC BHCorr Phase-Shift Resistivity 28-in. at 2 MHz, Real-Time (P28H_RT)	
0	0	0.2	200
(GAPI)	200	(OHMM)	
		ARC BHCorr Attenuation Resistivity 40-in. at 2 MHz, Real-Time (A40H_RT)	
ROP*5 (ROP5)	PKPK_RPM (Stick_RT) (RPM)	0.2	200
200	0	(OHMM)	
(M/HR)	400		





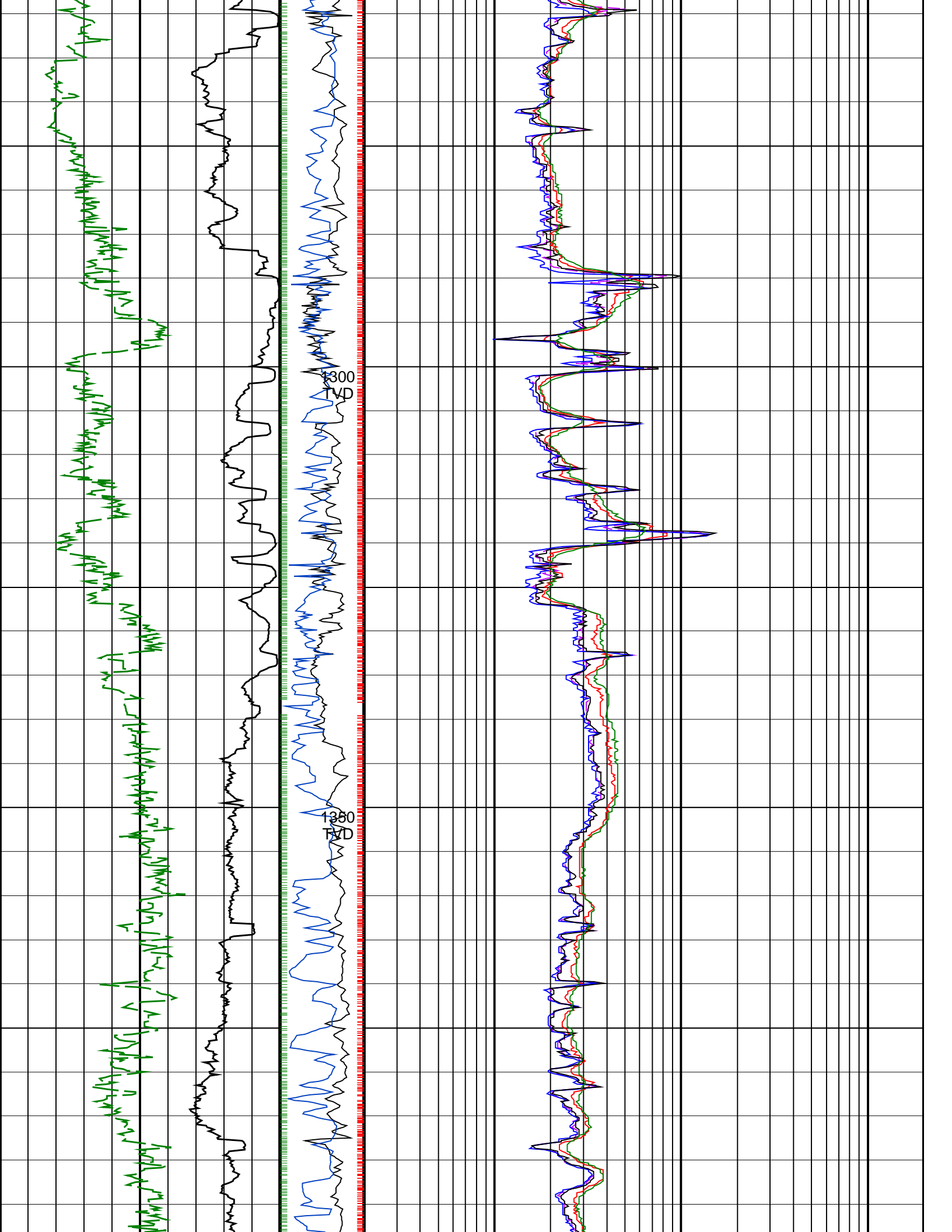


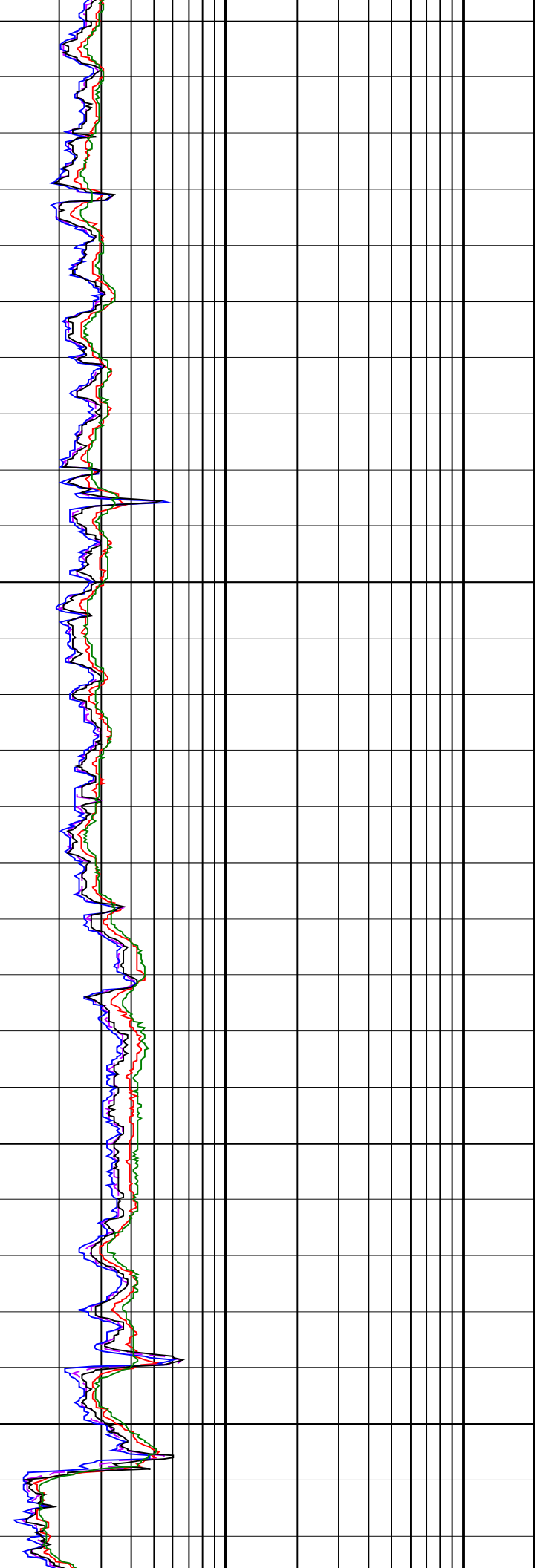
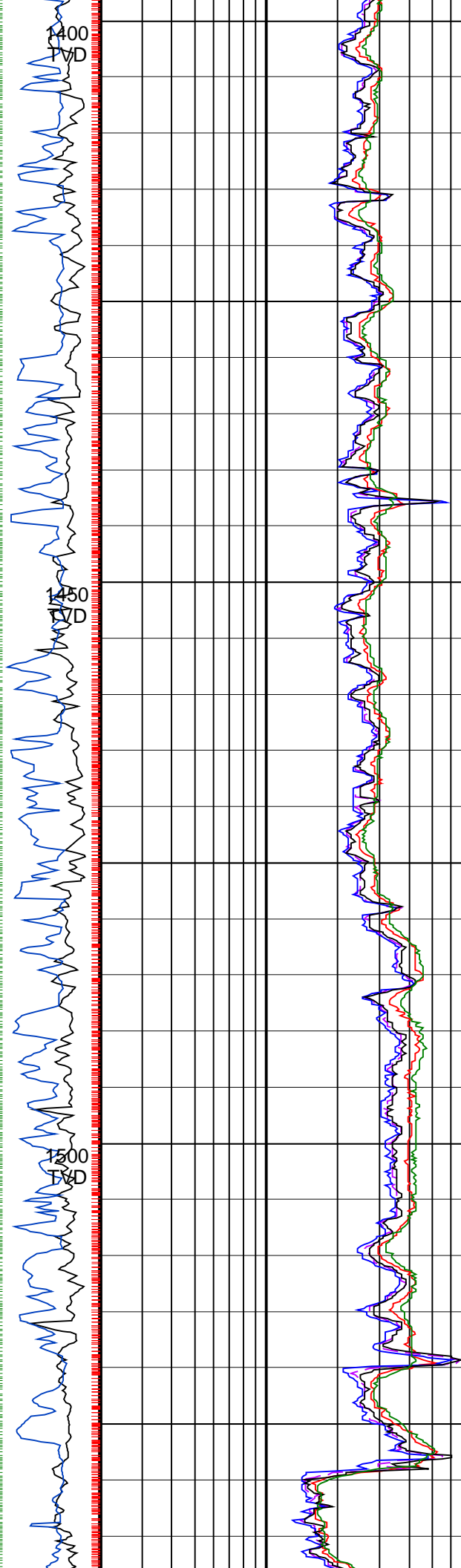
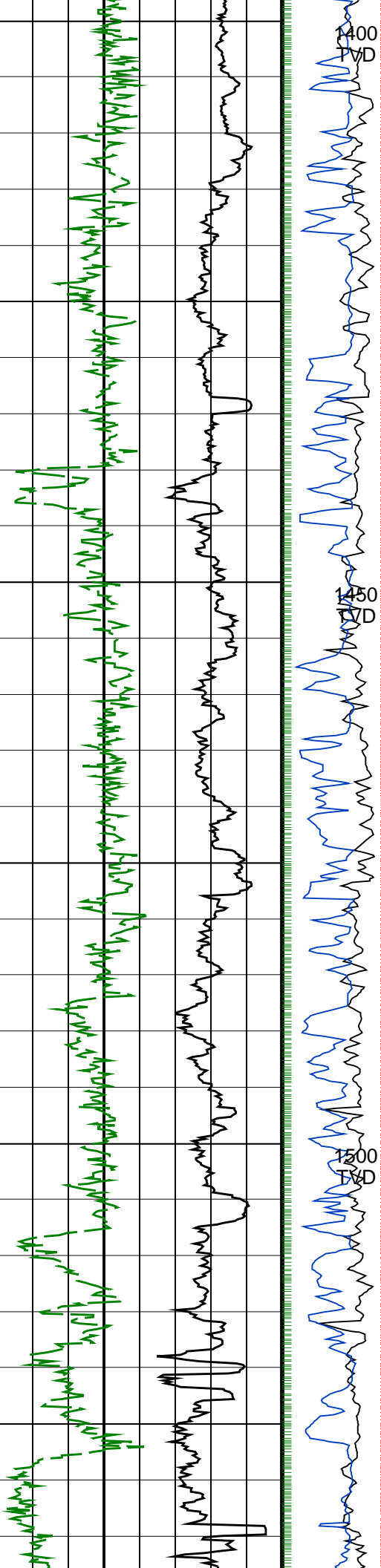


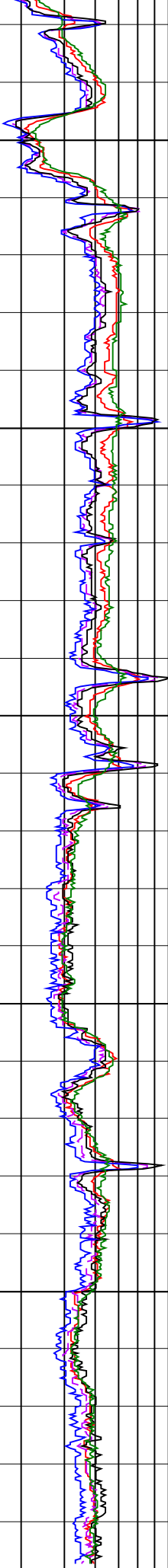
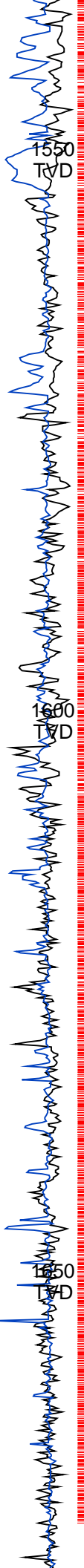
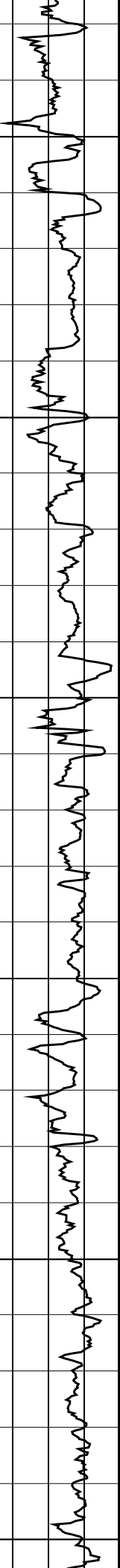
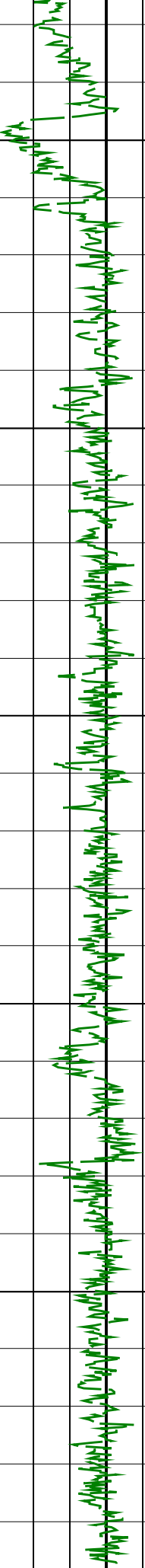
1150
5

1150
5

1150
5







200	ROP*5 (ROP5) (M/HR)	0	PKPK_RPM (Stick_RT) (RPM)	0.2	ARC BHCorr Attenuation Resistivity 40-in. at 2 MHz, Real-Time (A40H_RT) (OHMM)	200
0	ARC Gamma Ray, Real-Time (ARC_GR_RT) (GAPI)	200	MWD Collar RPM (CRPM_RT) (RPM)	0.2	ARC BHCorr Phase-Shift Resistivity 28-in. at 2 MHz, Real-Time (P28H_RT) (OHMM)	200
				0.2	ARC BHCorr Phase-Shift Resistivity 16-in. at 2 MHz, Real-Time (P16H_RT) (OHMM)	200
				0.2	ARC BHCorr Phase-Shift Resistivity 40-in. at 2 MHz, Real-Time (P40H_RT) (OHMM)	200
				0.2	ARC BHCorr Attenuation Resistivity 40-in. at 400 KHz, Real-Time (A40L_RT) (OHMM)	200
PIP SUMMARY						
<ul style="list-style-type: none"> └ ARC Gamma Ray Samples └ ARC Resistivity Samples └ IMP RP28 PIP 						