

Henry 2DW1ST1 LWD RT 200TVD

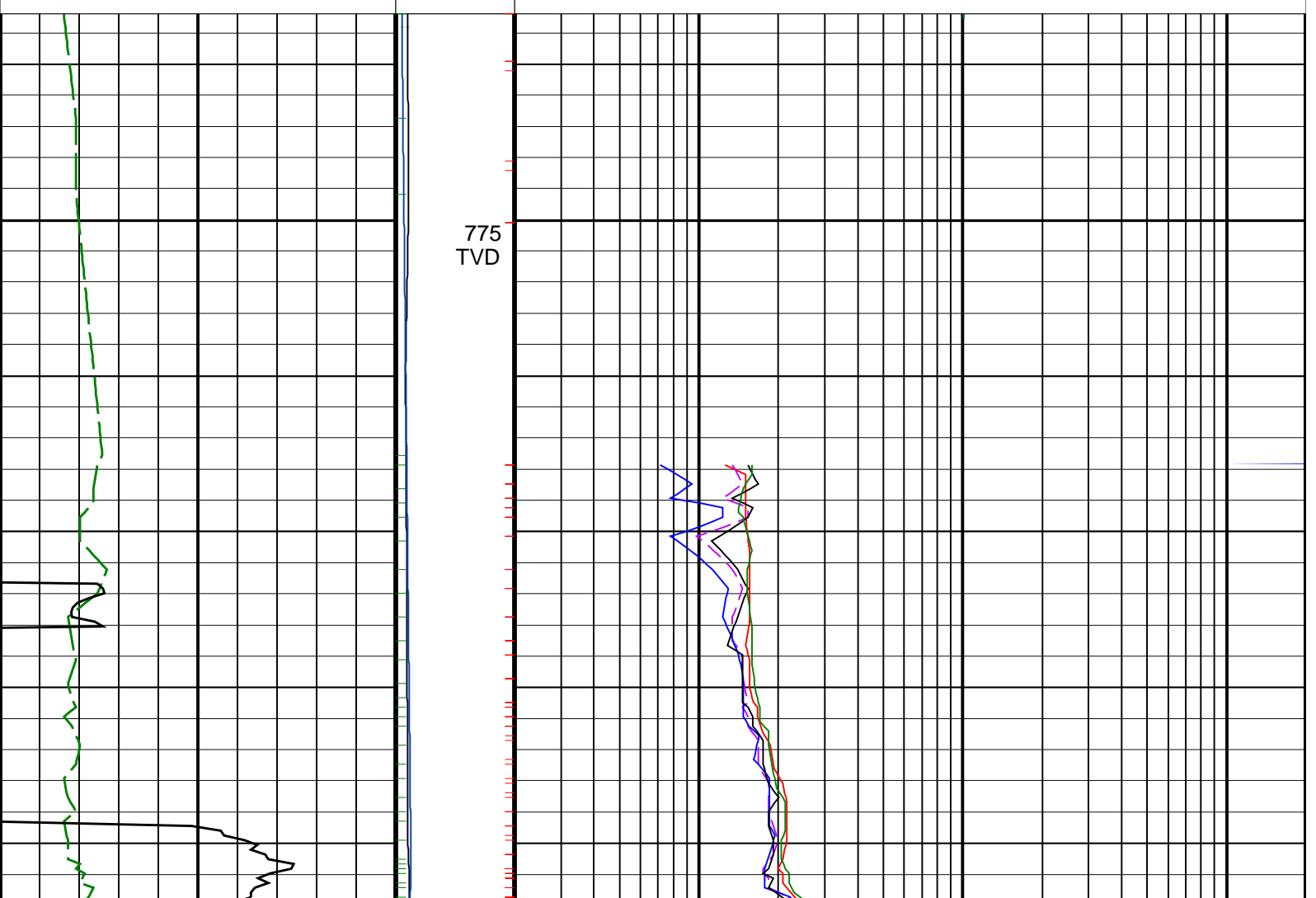
IDEAL Version: ID13_0C_11 <TVD> Vertical Scale: 1:200

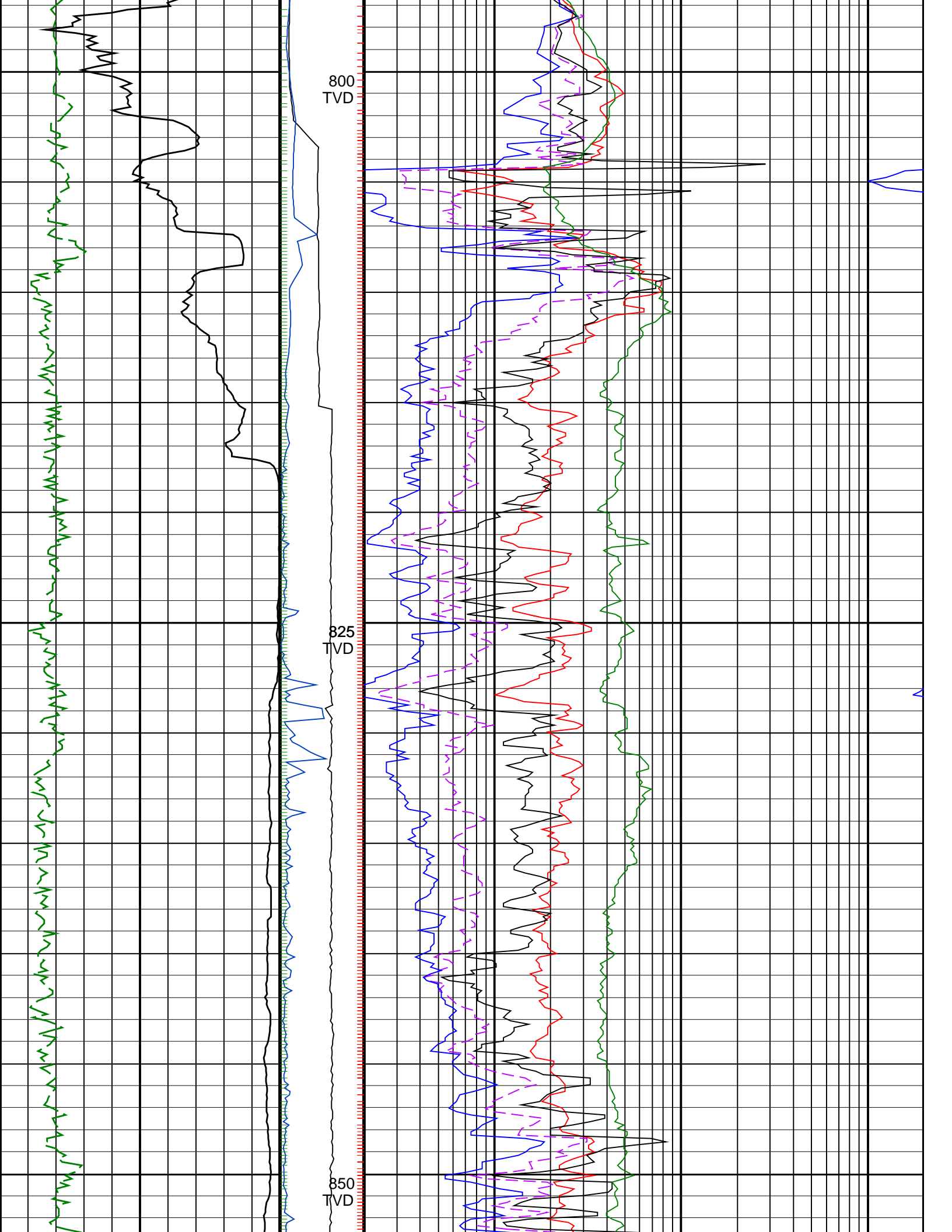
Graphics File Created: 07-Oct-2008 13:07

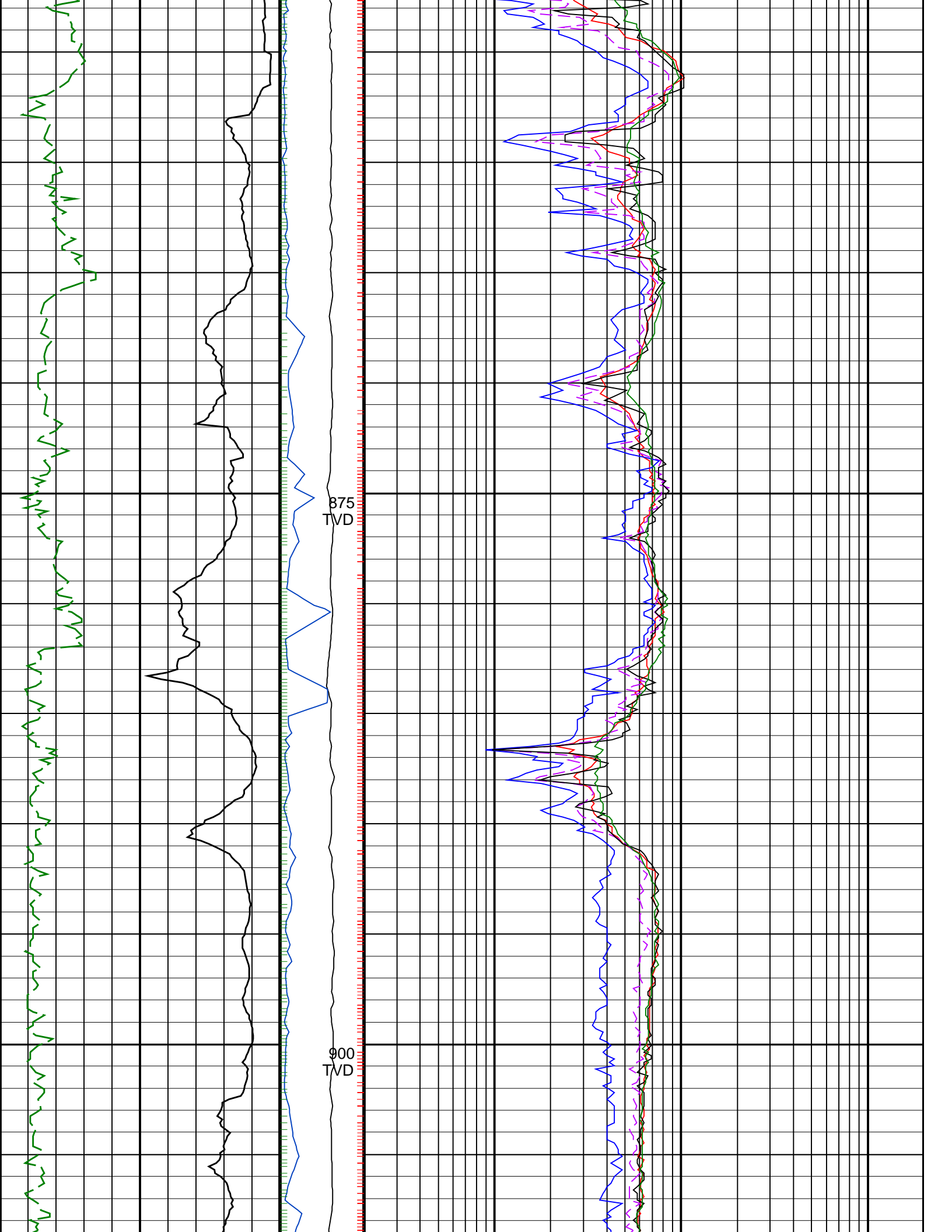
PIP SUMMARY

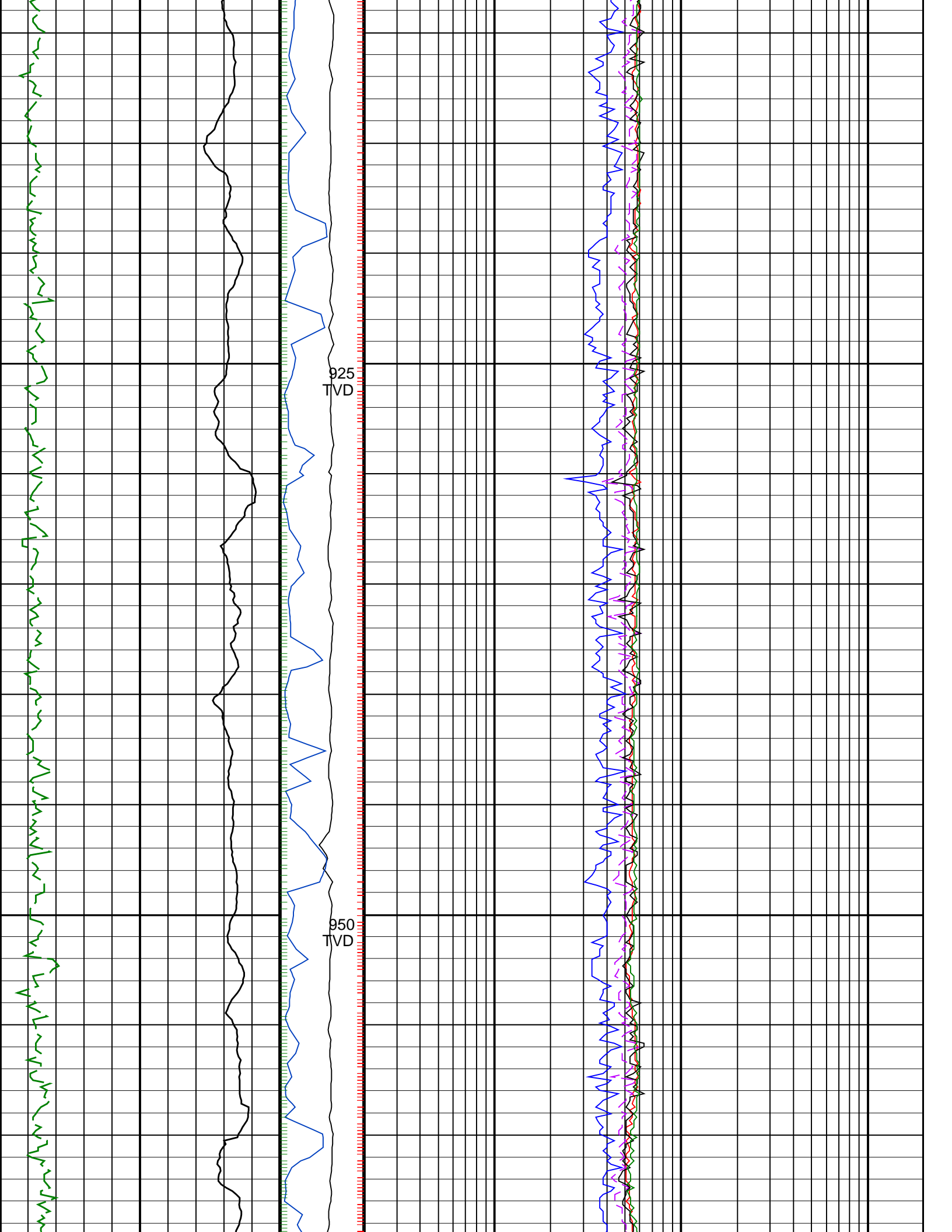
- ┆ ARC Gamma Ray Samples
- ┆ ARC Resistivity Samples
- ┆ IMP RP28 PIP

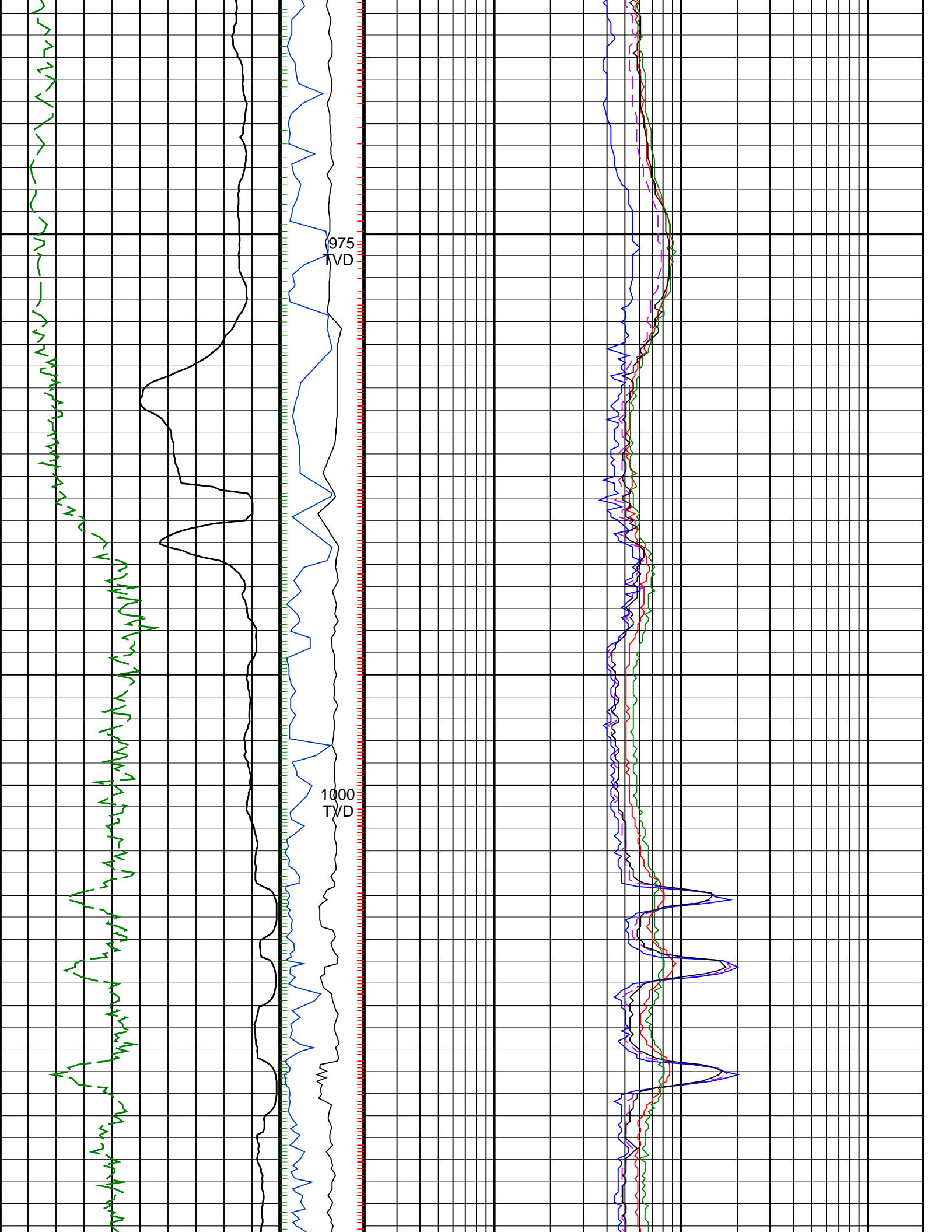
		ARC BHCorr Attenuation Resistivity 40-in. at 400 KHz, Real-Time (A40L_RT)	0.2	(OHMM)	200
		ARC BHCorr Phase-Shift Resistivity 40-in. at 2 MHz, Real-Time (P40H_RT)	0.2	(OHMM)	200
		ARC BHCorr Phase-Shift Resistivity 16-in. at 2 MHz, Real-Time (P16H_RT)	0.2	(OHMM)	200
ARC Gamma Ray, Real-Time (ARC_GR_RT)	MWD Collar RPM (CRPM_RT)	ARC BHCorr Phase-Shift Resistivity 28-in. at 2 MHz, Real-Time (P28H_RT)	0.2	(OHMM)	200
(GAPI)	(RPM)				
0	0				
200	200				
ROP*5 (ROP5)	PKPK_RPM (Stick_RT)	ARC BHCorr Attenuation Resistivity 40-in. at 2 MHz, Real-Time (A40H_RT)	0.2	(OHMM)	200
(M/HR)	(RPM)				
200	0				
	0				
	400				

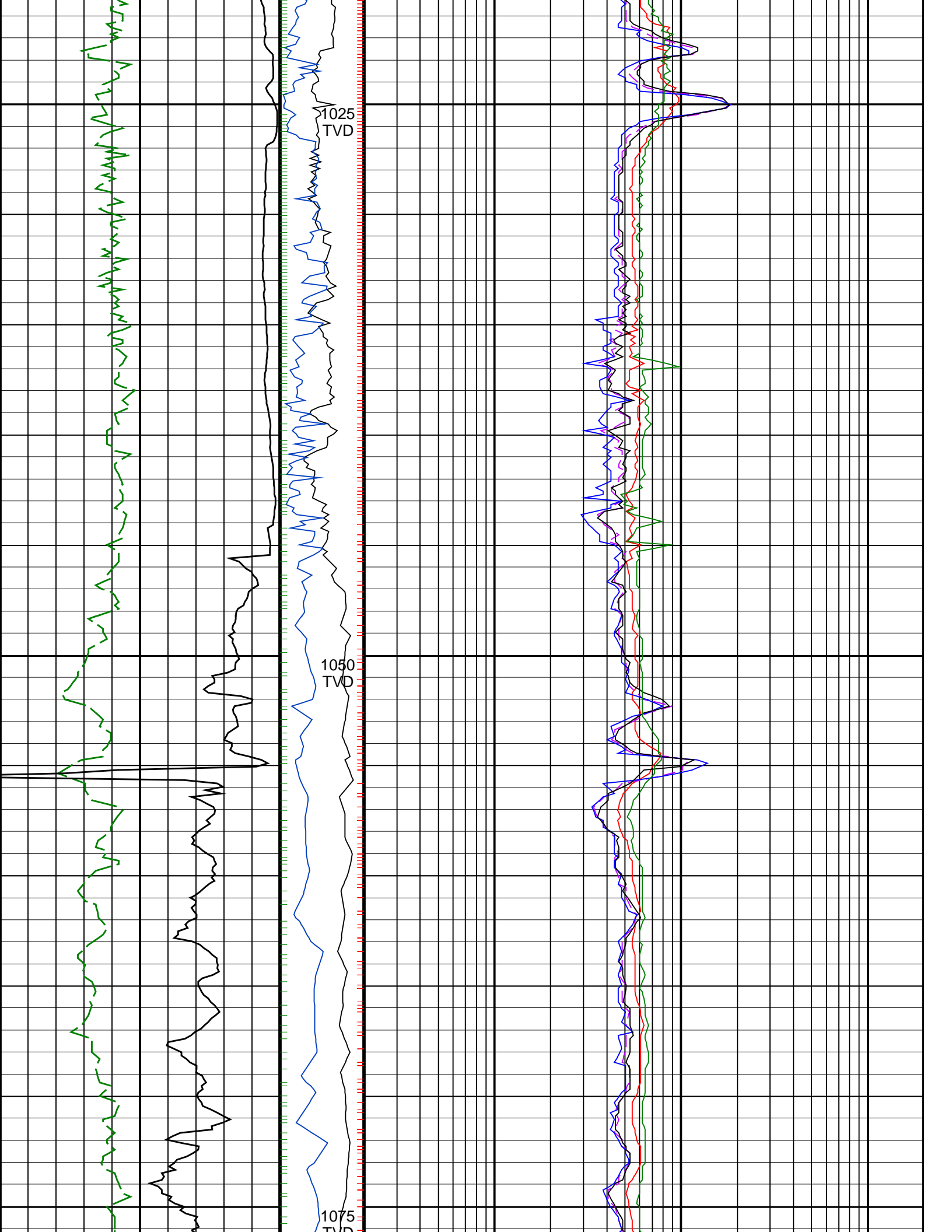








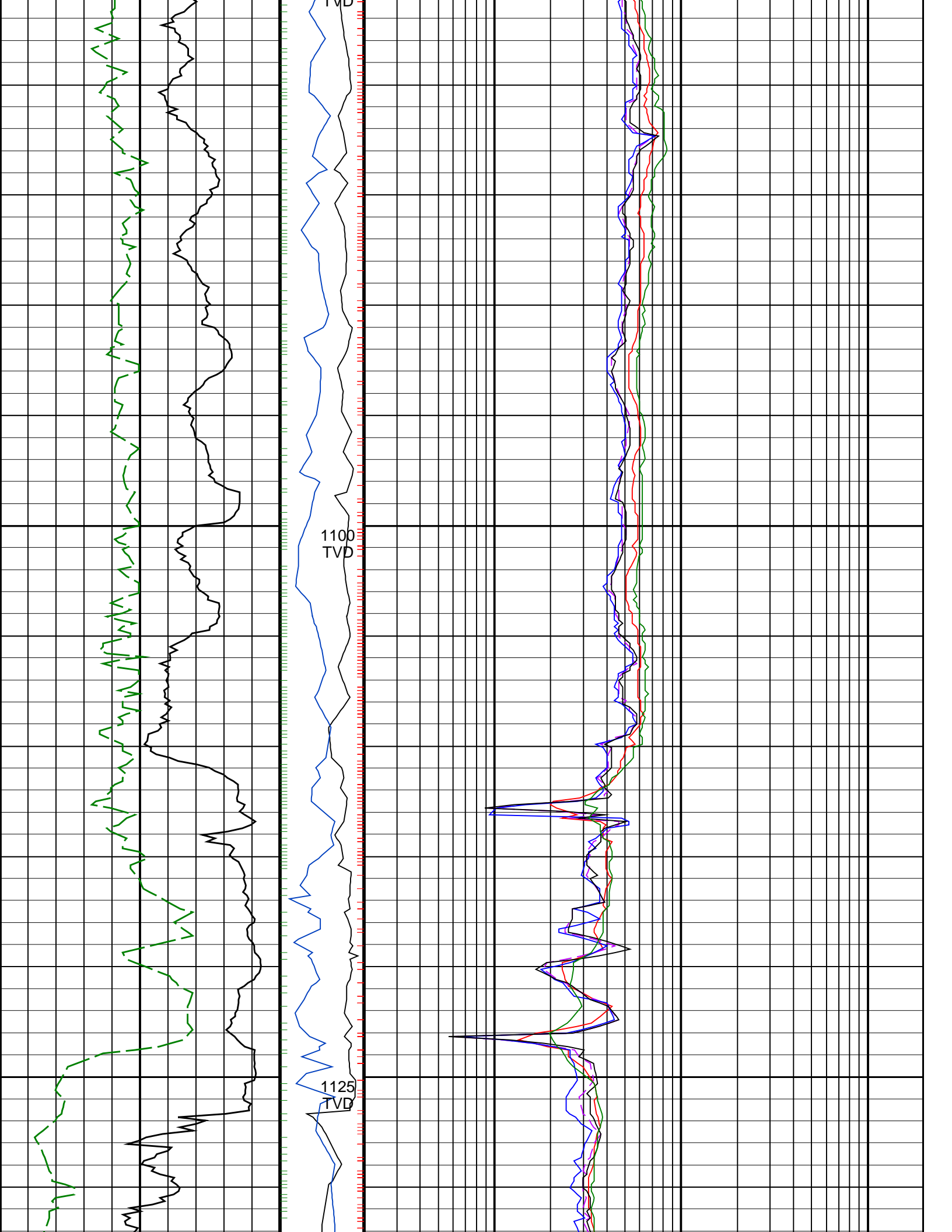


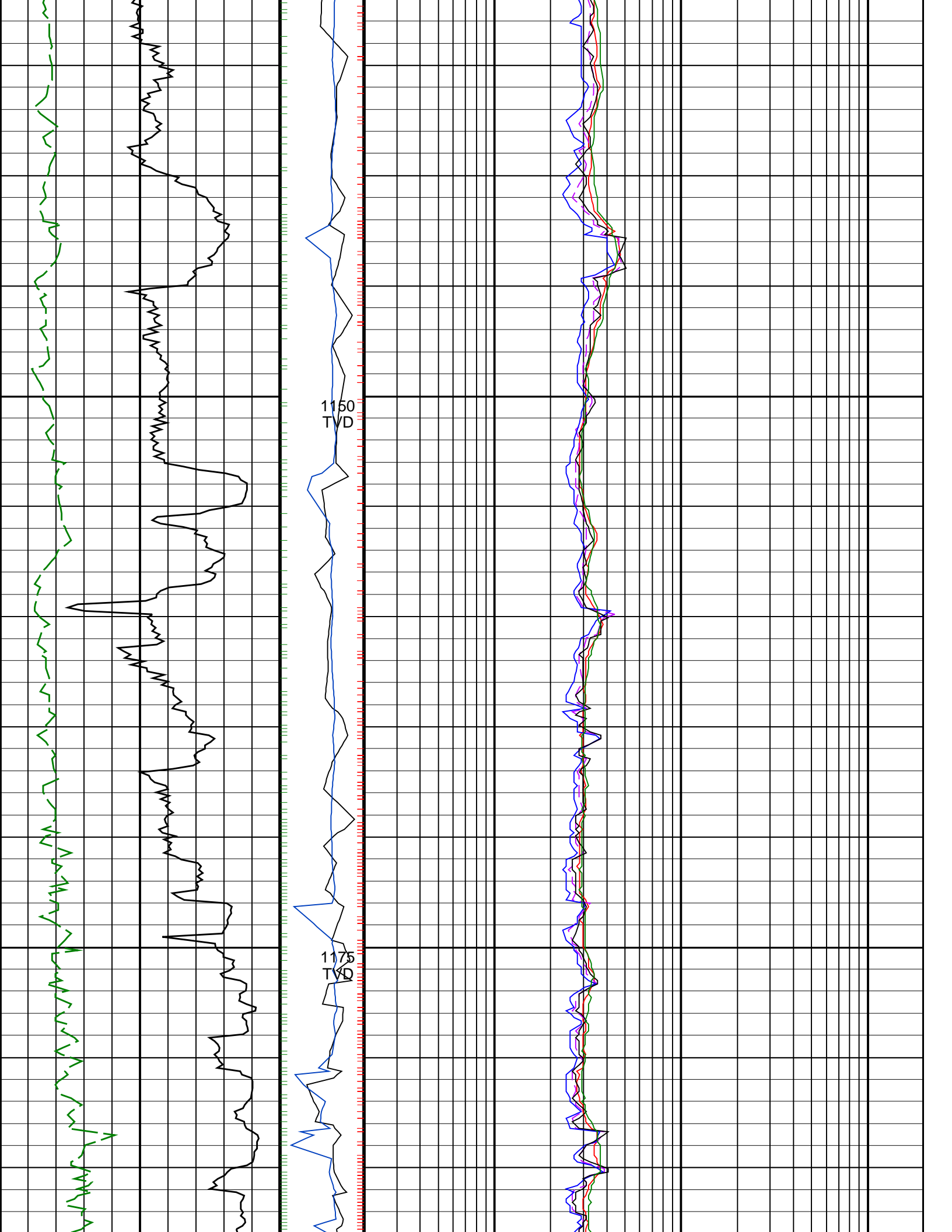


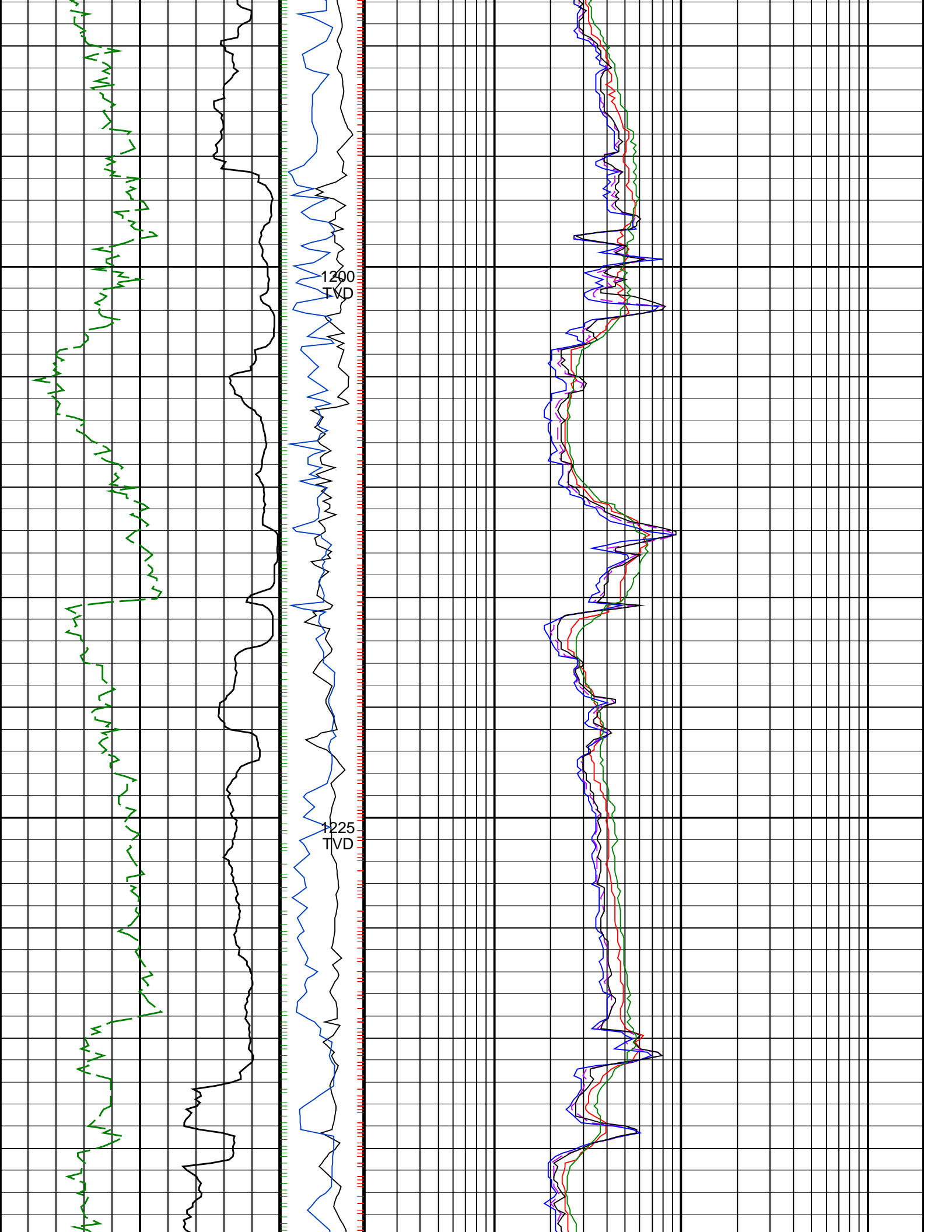
1025
TVD

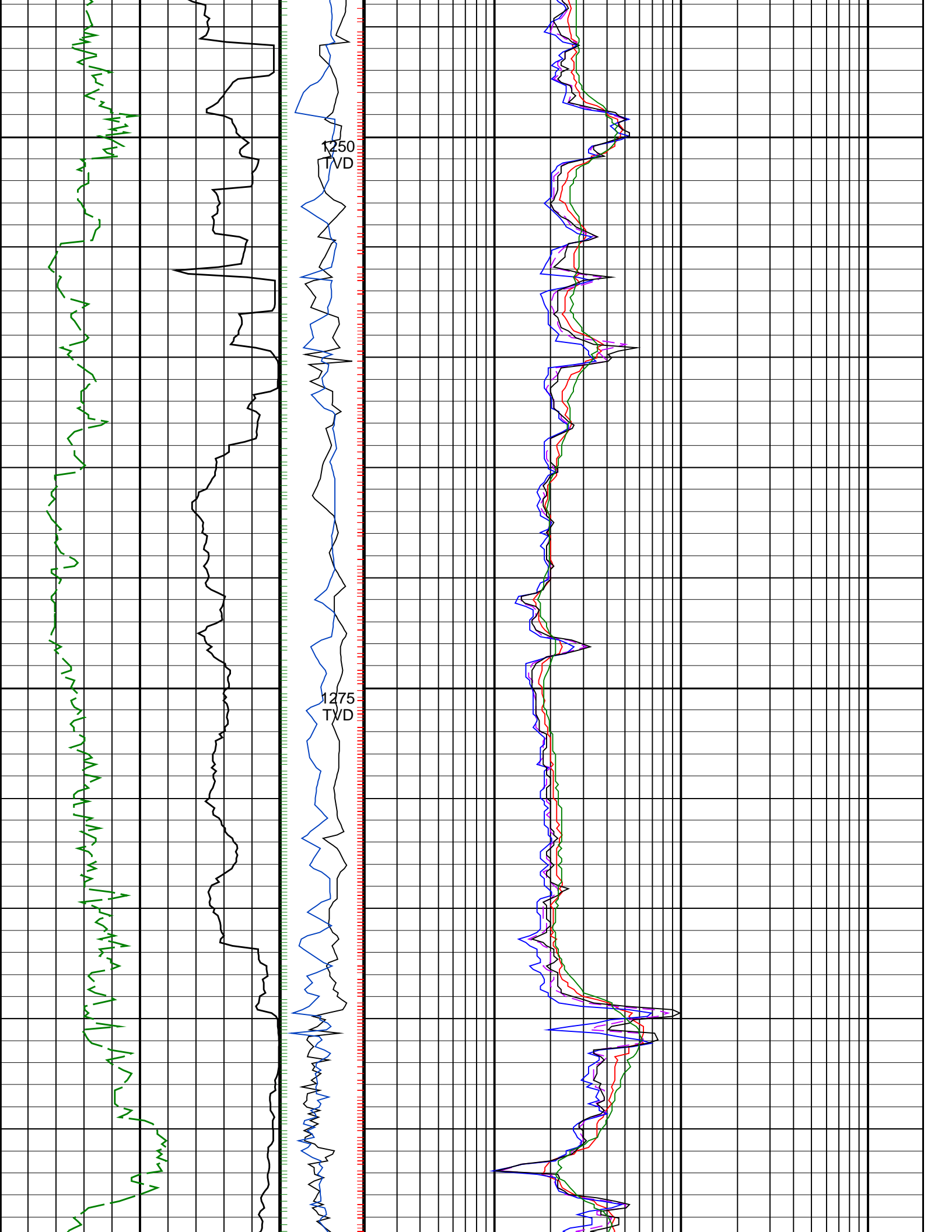
1050
TVD

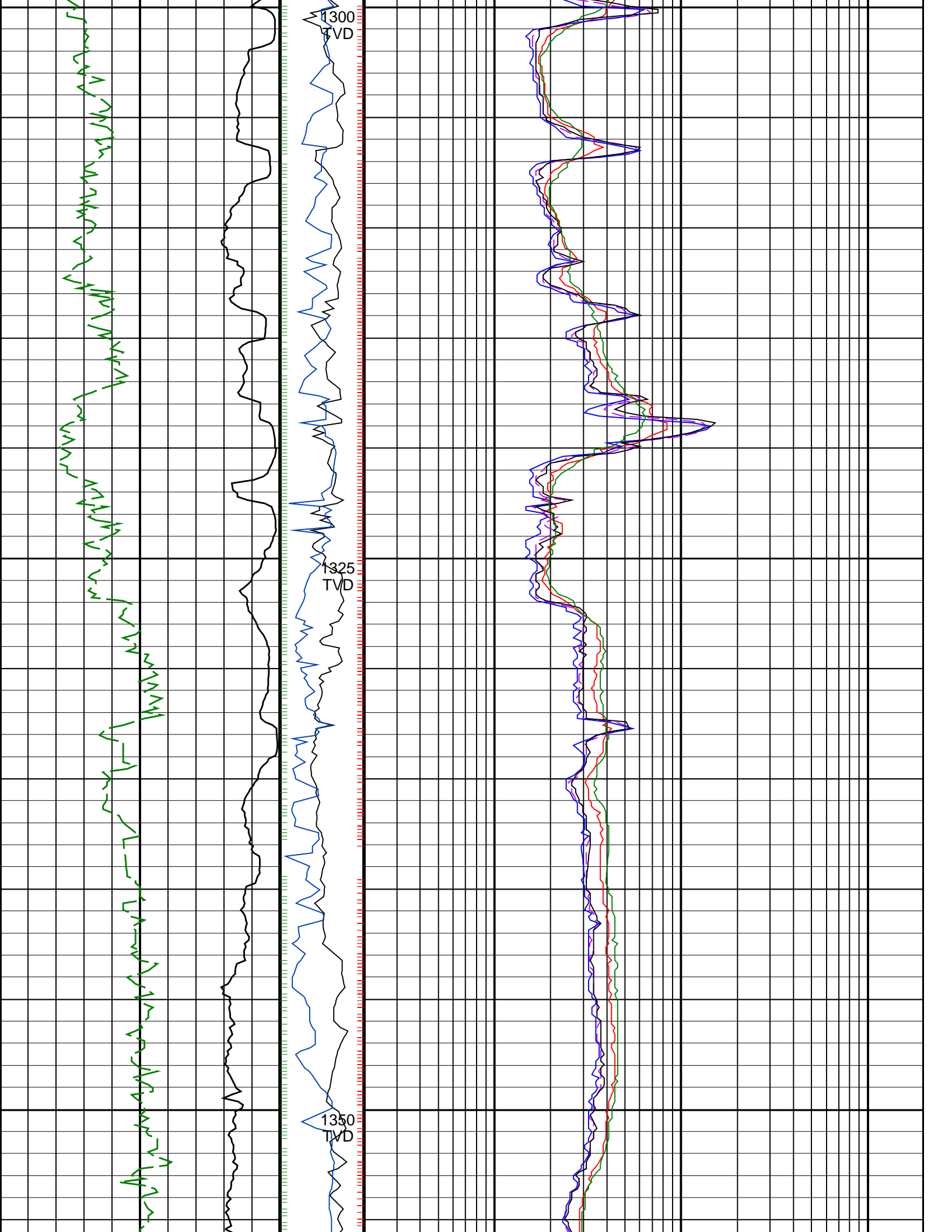
1075
TVD

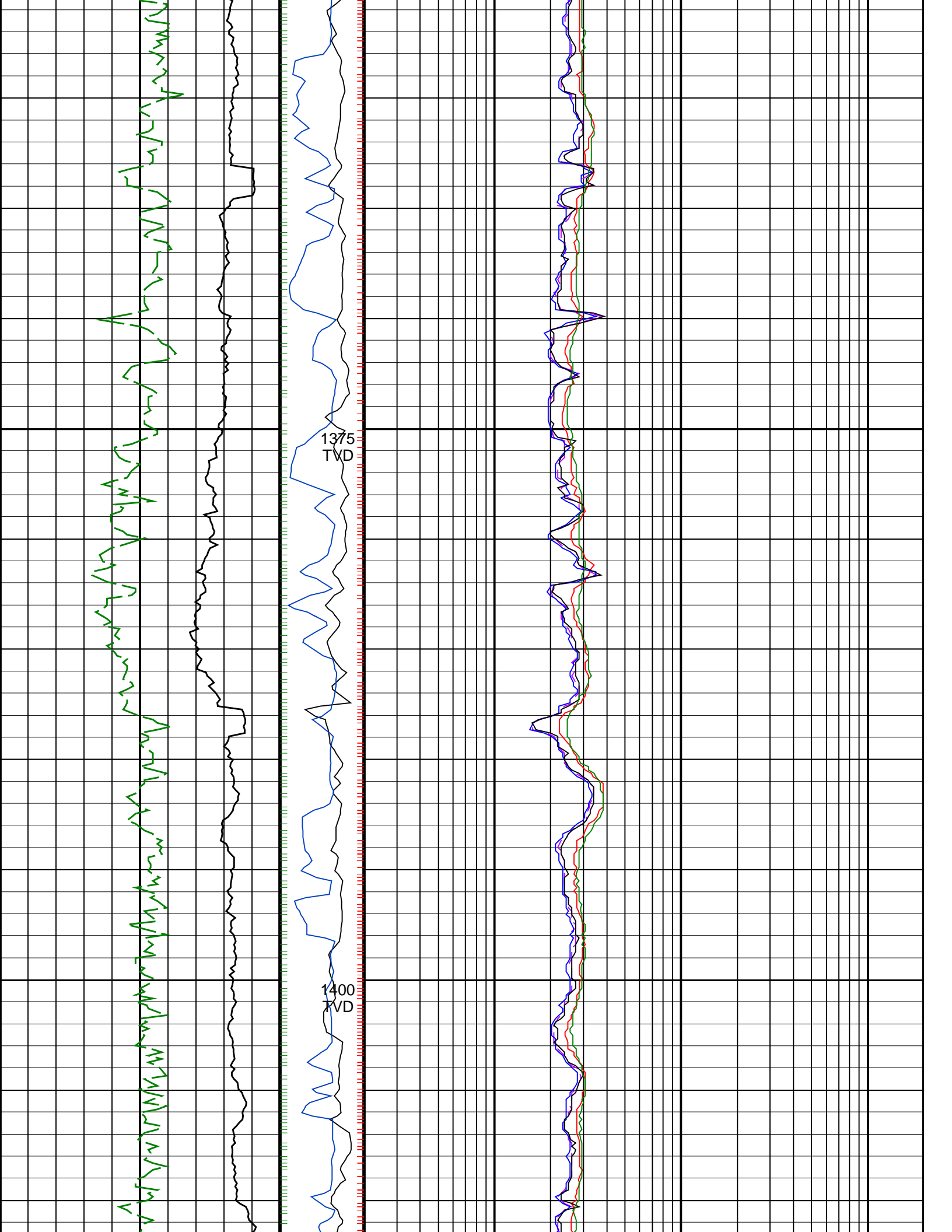


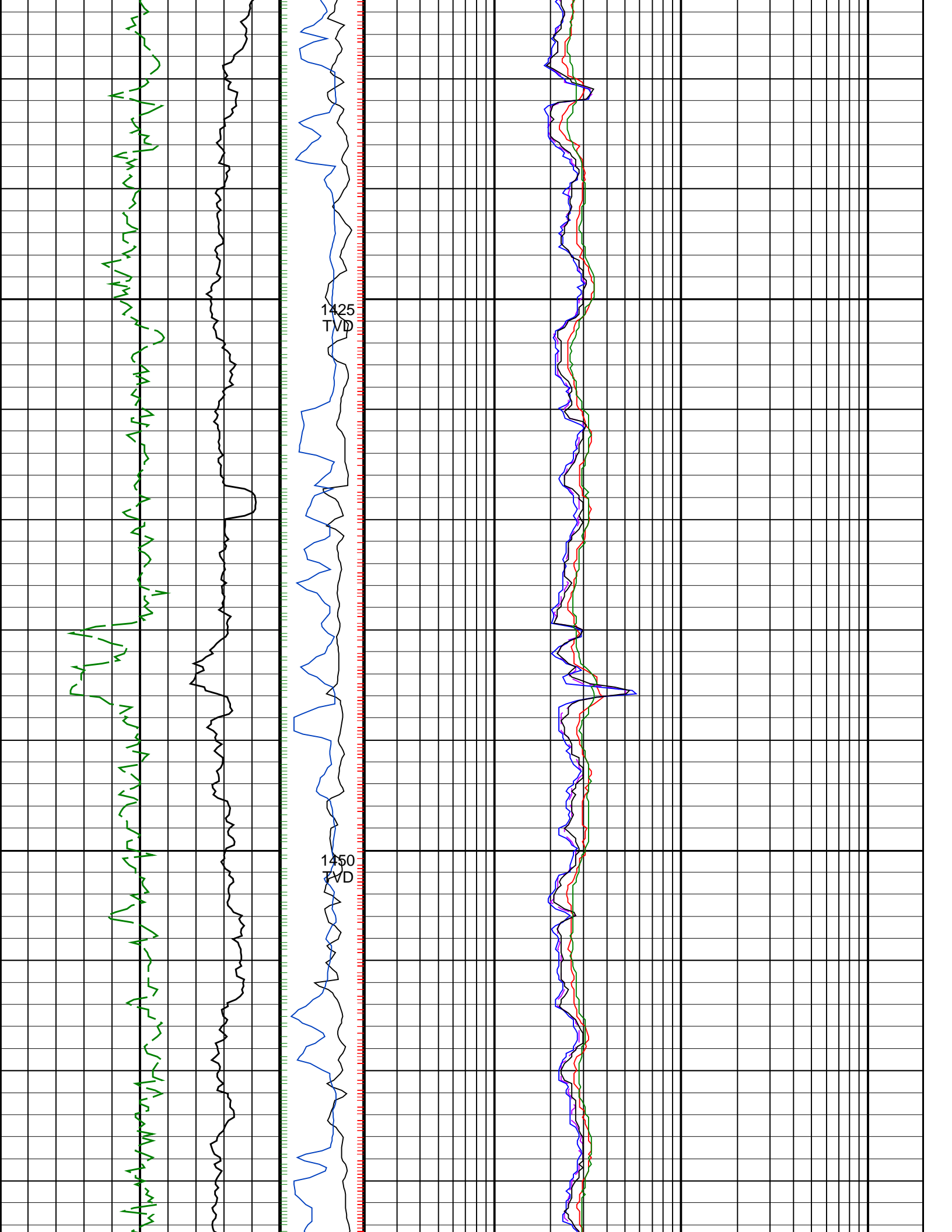


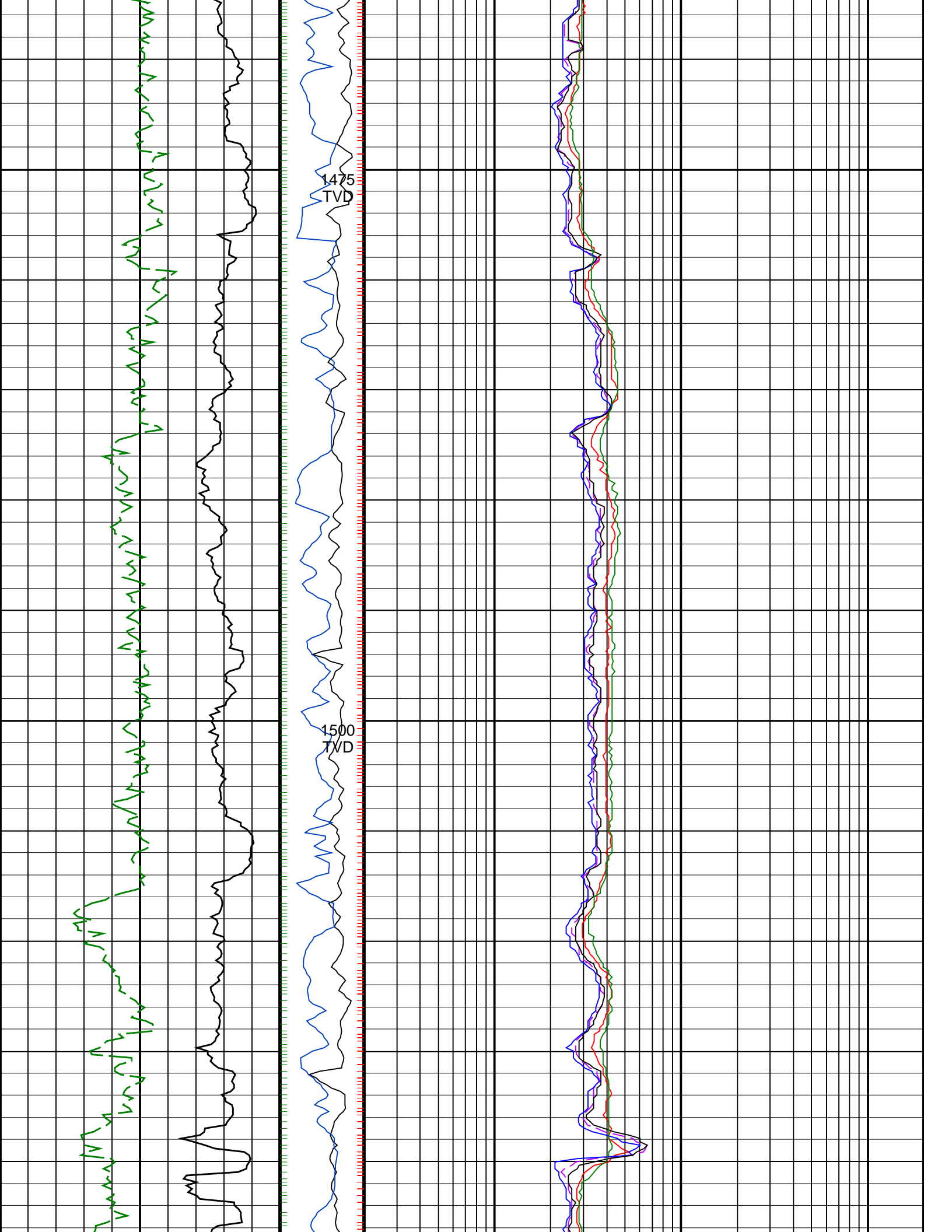


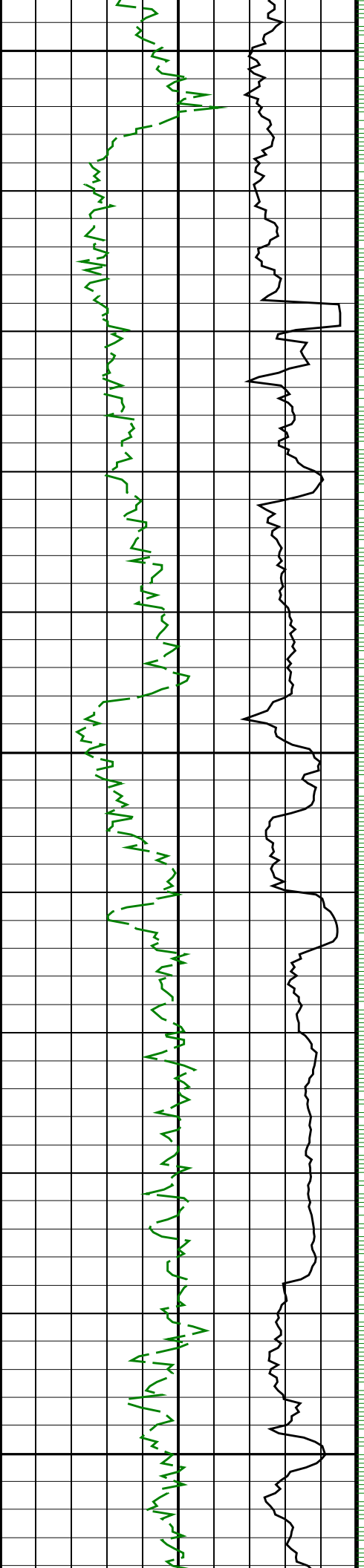








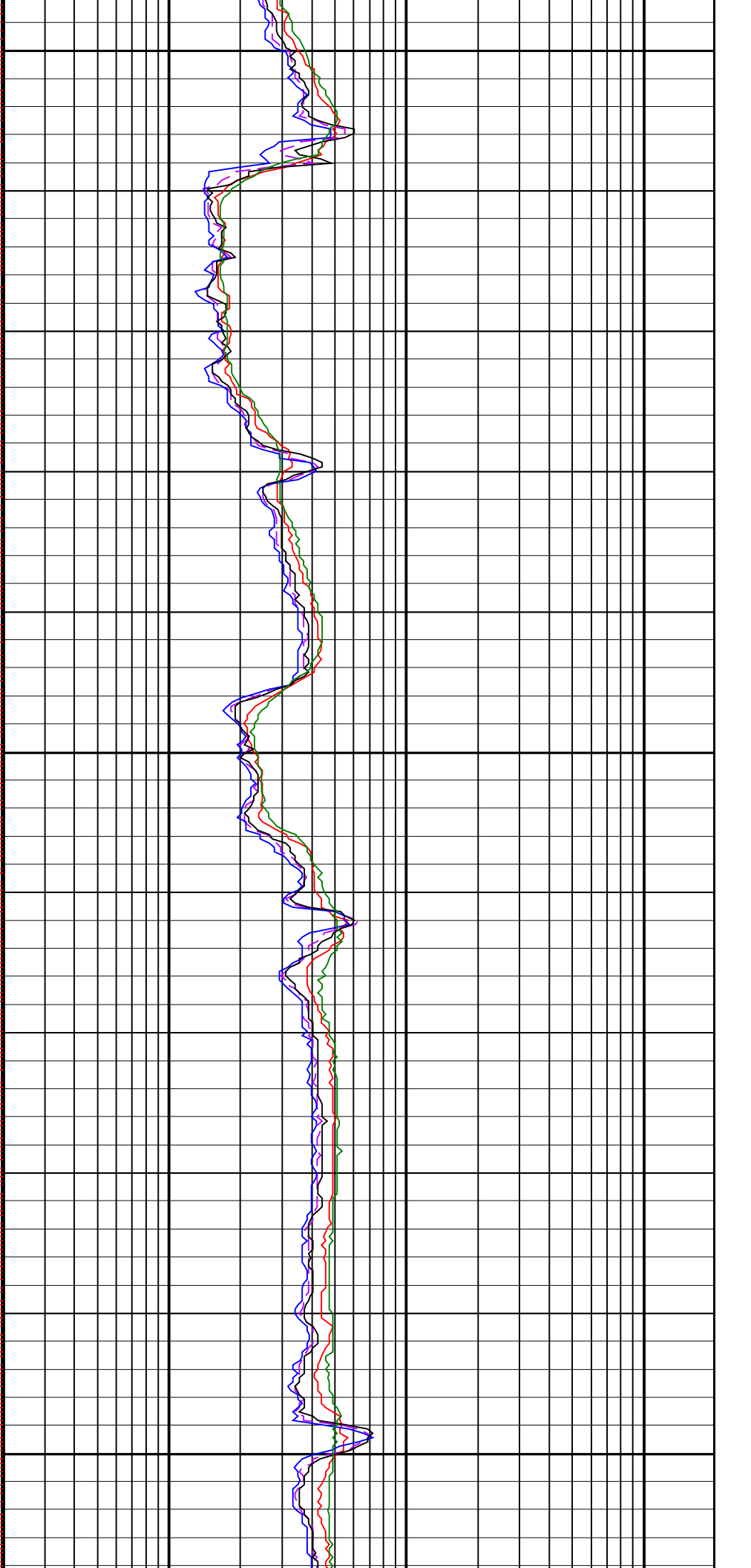


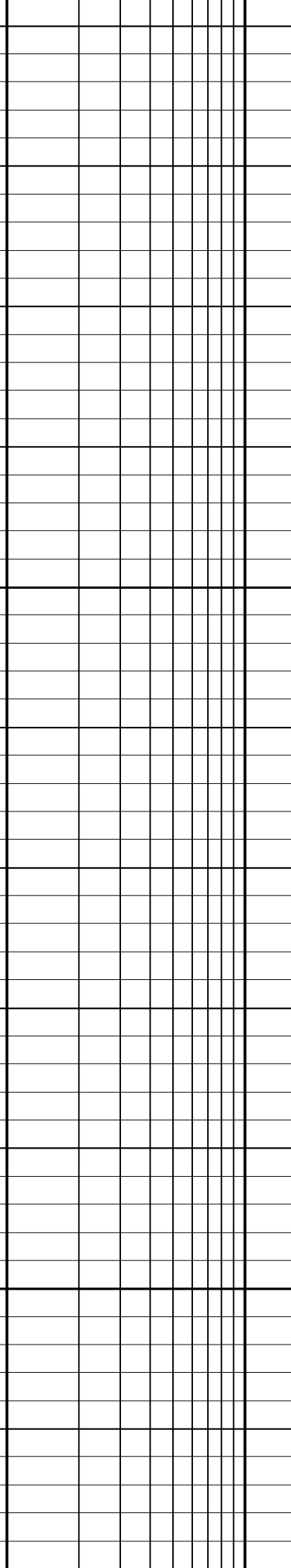
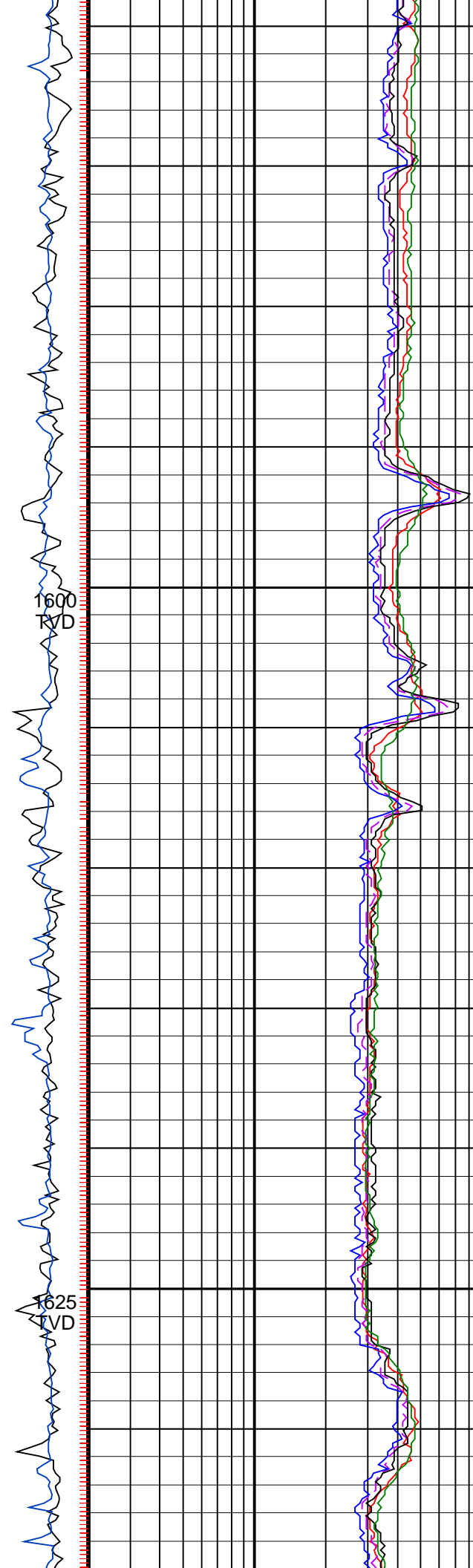
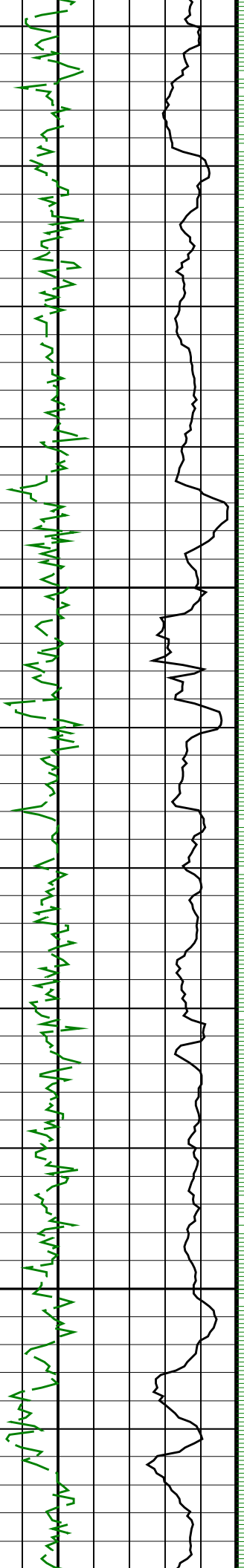


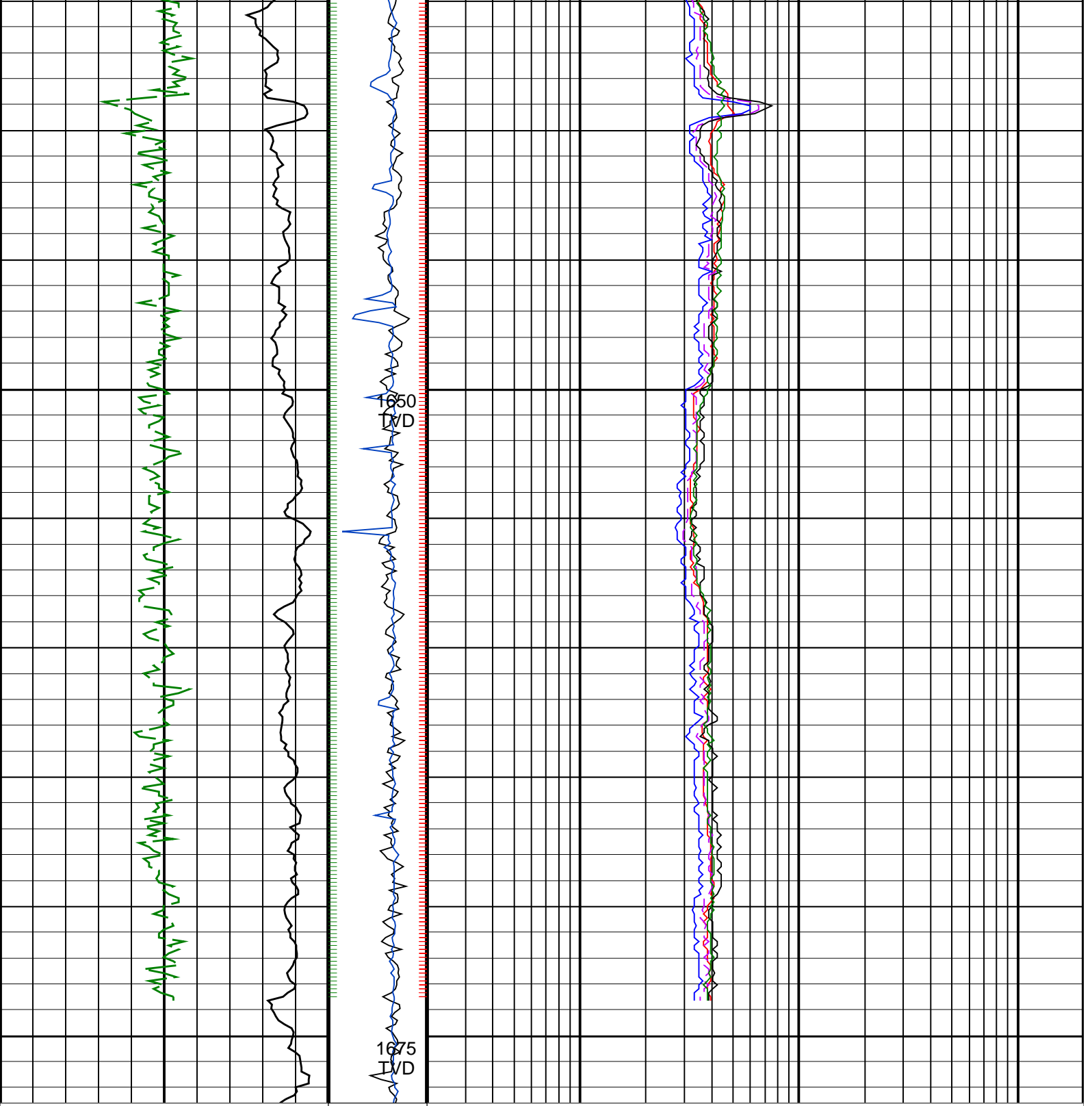
1525
TVD

1550
TVD

1575
TVD







<p>ROP*5 (ROP5) (M/HR)</p> <p>200 0</p>	<p>PKPK_RPM (Stick_RT) (RPM)</p> <p>0 400</p>	<p>ARC BHCorr Attenuation Resistivity 40-in. at 2 MHz, Real-Time (A40H_RT) (OHMM)</p> <p>0.2 200</p>
<p>ARC Gamma Ray, Real-Time (ARC_GR_RT) (GAPI)</p> <p>0 200</p>	<p>MWD Collar RPM (CRPM_RT) (RPM)</p> <p>0 200</p>	<p>ARC BHCorr Phase-Shift Resistivity 28-in. at 2 MHz, Real-Time (P28H_RT) (OHMM)</p> <p>0.2 200</p>
		<p>ARC BHCorr Phase-Shift Resistivity 16-in. at 2 MHz, Real-Time (P16H_RT) (OHMM)</p> <p>0.2 200</p>
		<p>ARC BHCorr Phase-Shift Resistivity 40-in. at 2 MHz, Real-Time (P40H_RT) (OHMM)</p> <p>0.2 200</p>
		<p>ARC BHCorr Attenuation Resistivity 40-in. at 100 KHz, Real-Time (A40L_RT) (OHMM)</p> <p>0.2 200</p>

PIP SUMMARY

- + ARC Gamma Ray Samples
- + ARC Resistivity Samples
- + IMP RP28 PIP