

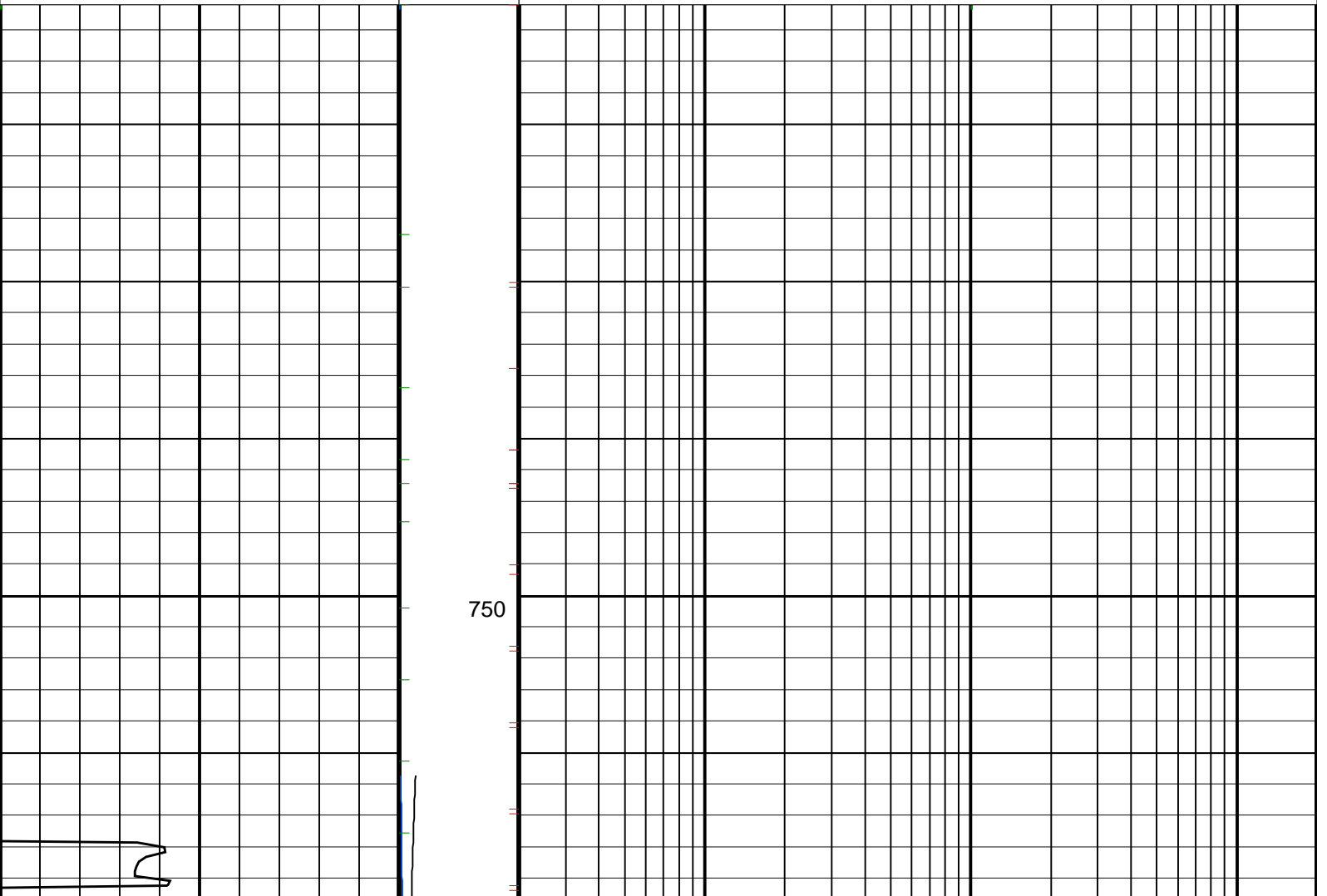
Henry 2DW1ST1 LWD RT 200MD

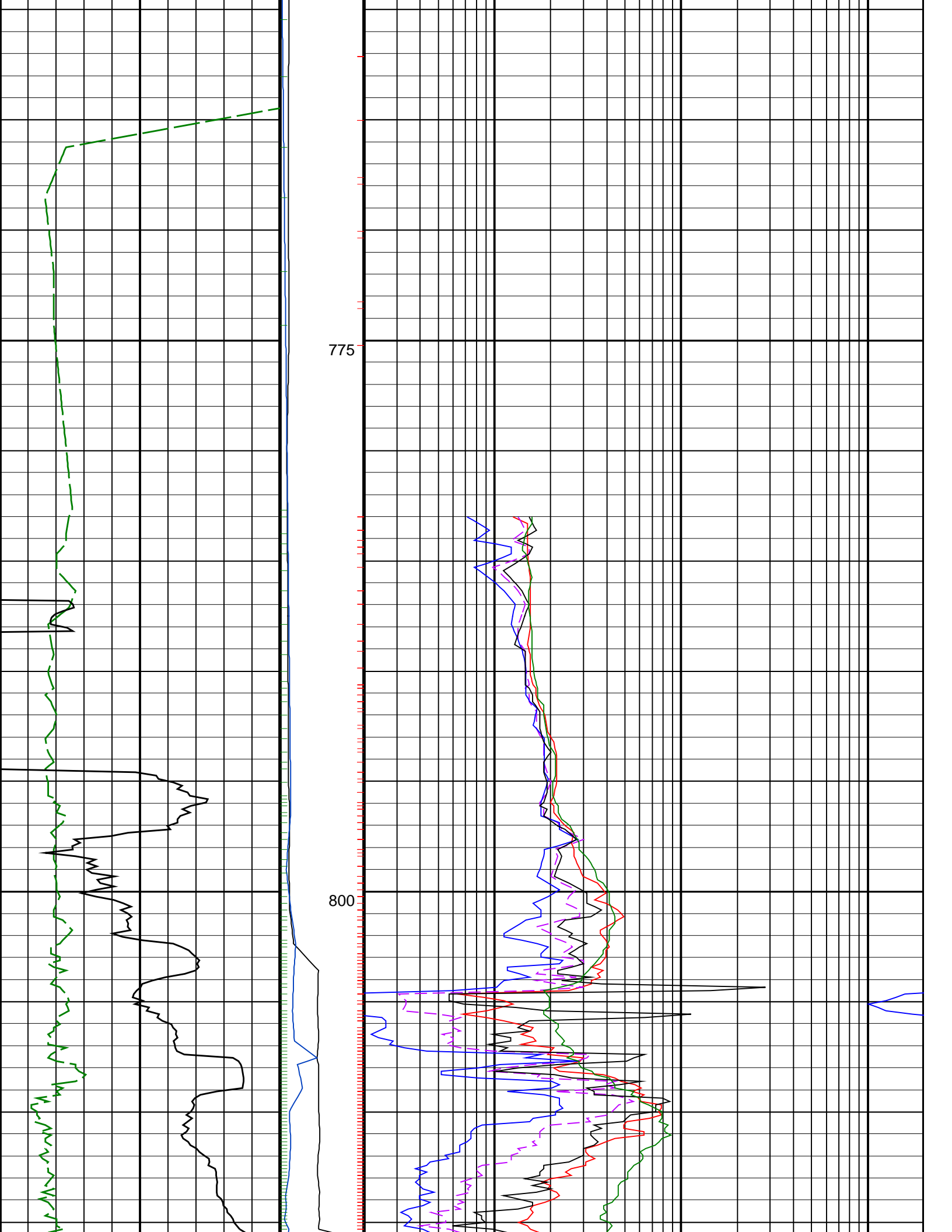
IDEAL Version: ID13_0C_11 <MD > Vertical Scale: 1:200 Graphics File Created: 07-Oct-2008 13:04

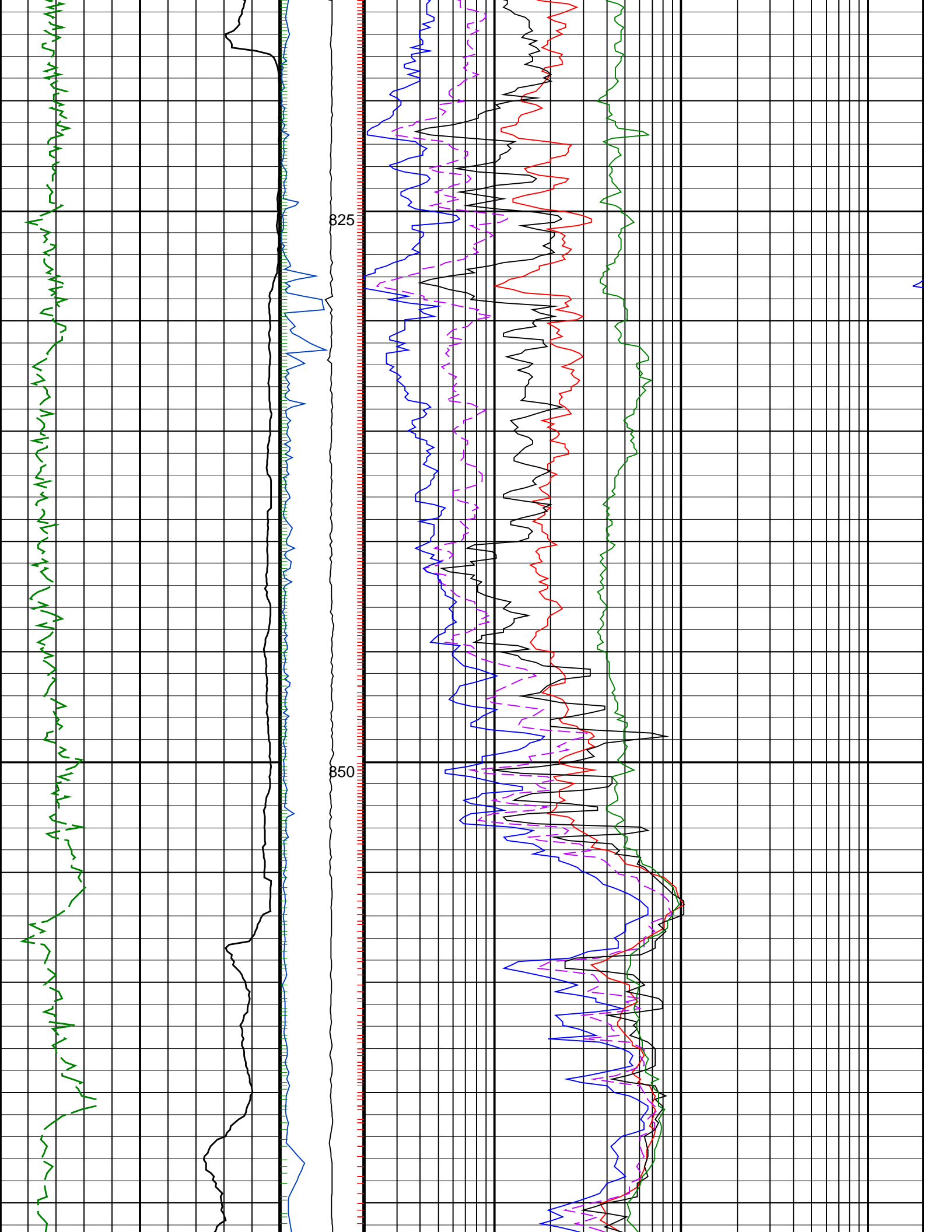
PIP SUMMARY

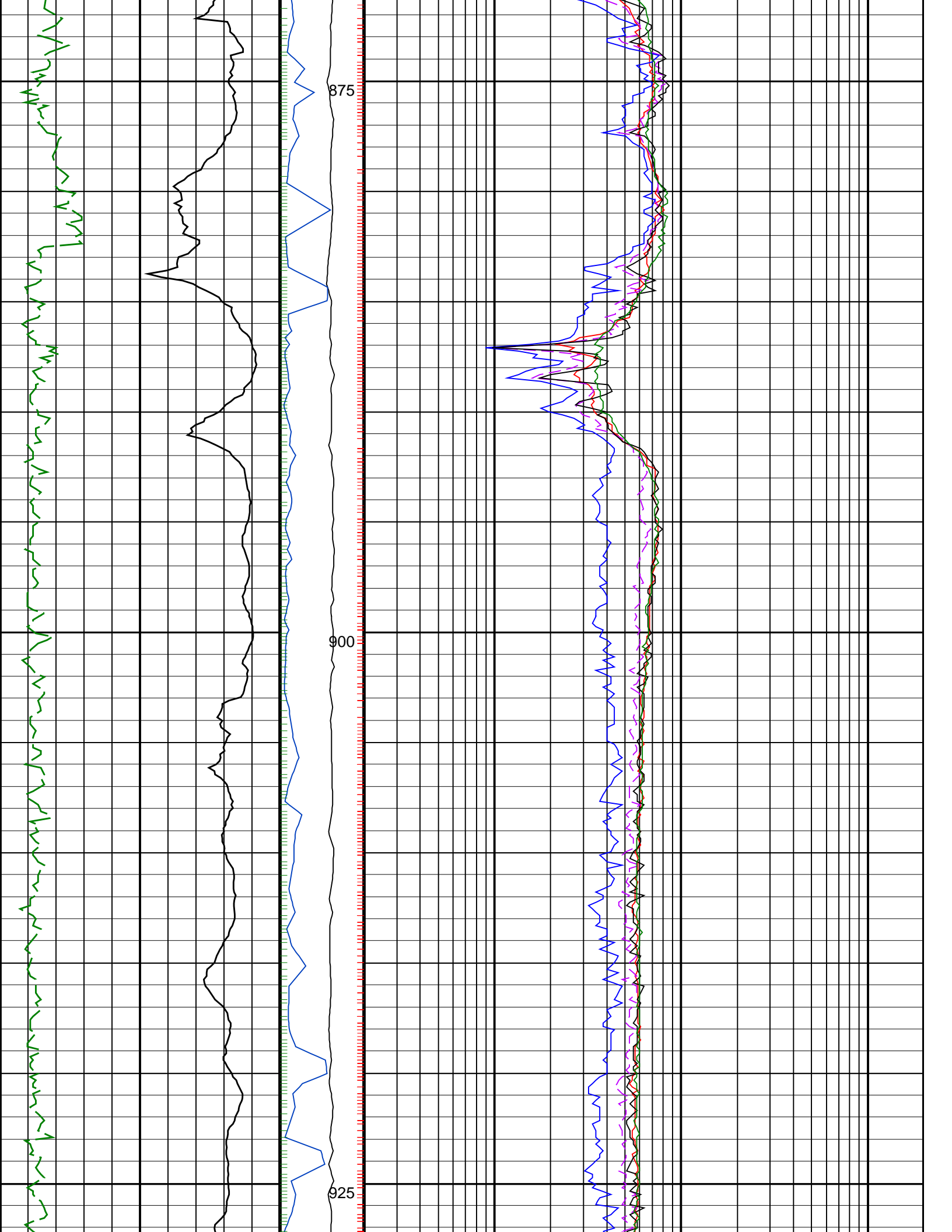
- └ ARC Gamma Ray Samples
- └ ARC Resistivity Samples
- └ IMP RP28 PIP

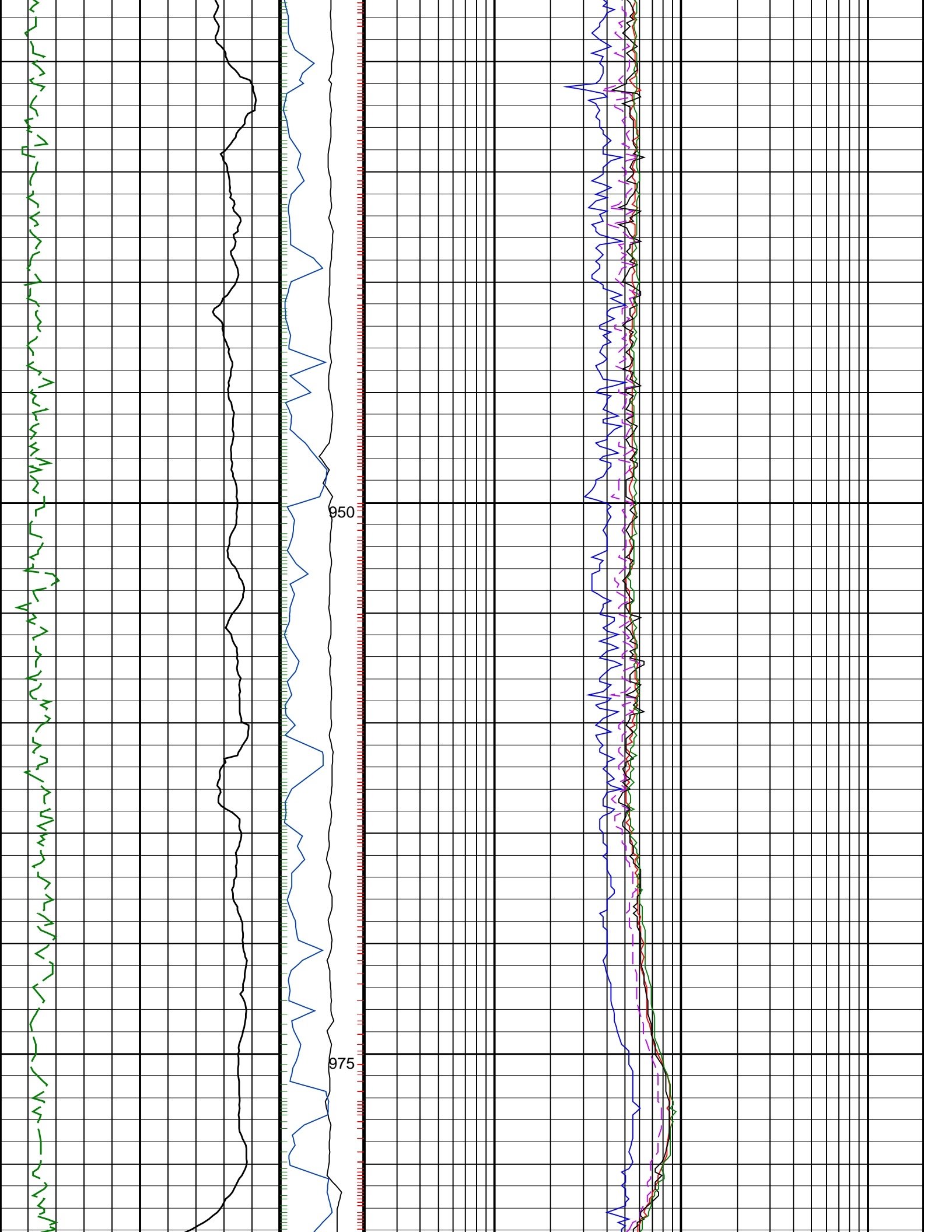
		<u>ARC BHCorr Attenuation Resistivity 40-in. at 400 KHz, Real-Time (A40L_RT)</u>
0.2	(OHMM)	200
		<u>ARC BHCorr Phase-Shift Resistivity 40-in. at 2 MHz, Real-Time (P40H_RT)</u>
0.2	(OHMM)	200
		<u>ARC BHCorr Phase-Shift Resistivity 16-in. at 2 MHz, Real-Time (P16H_RT)</u>
0.2	(OHMM)	200
<u>ARC Gamma Ray, Real-Time (ARC_GR_RT)</u>	<u>MWD Collar RPM (CRPM_RT)</u>	<u>ARC BHCorr Phase-Shift Resistivity 28-in. at 2 MHz, Real-Time (P28H_RT)</u>
0 (GAPI) 200	0 200	0.2 (OHMM) 200
<u>ROP*5 (ROP5)</u>	<u>PKPK_RPM (Stick_RT)</u>	<u>ARC BHCorr Attenuation Resistivity 40-in. at 2 MHz, Real-Time (A40H_RT)</u>
200 (M/HR) 0	0 400	0.2 (OHMM) 200

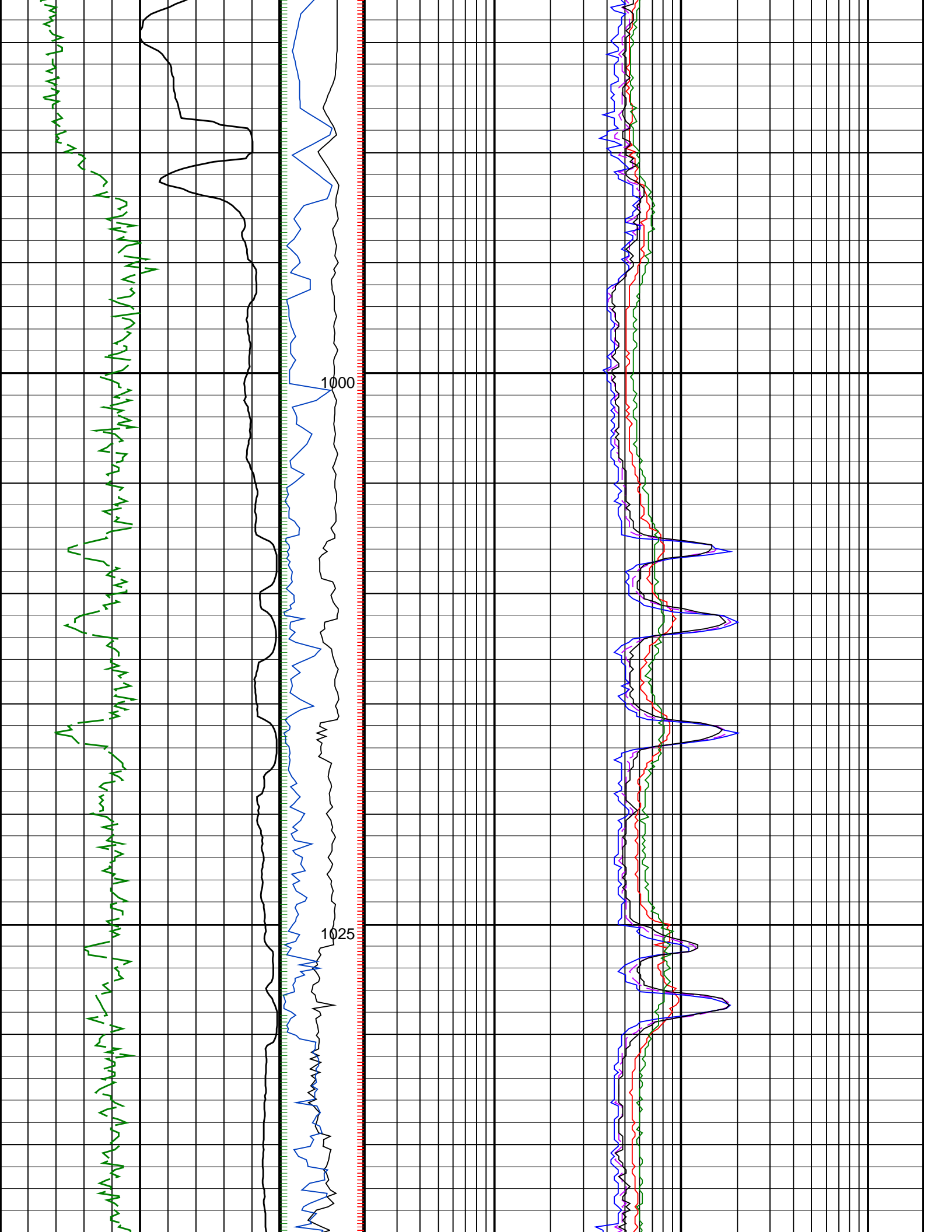


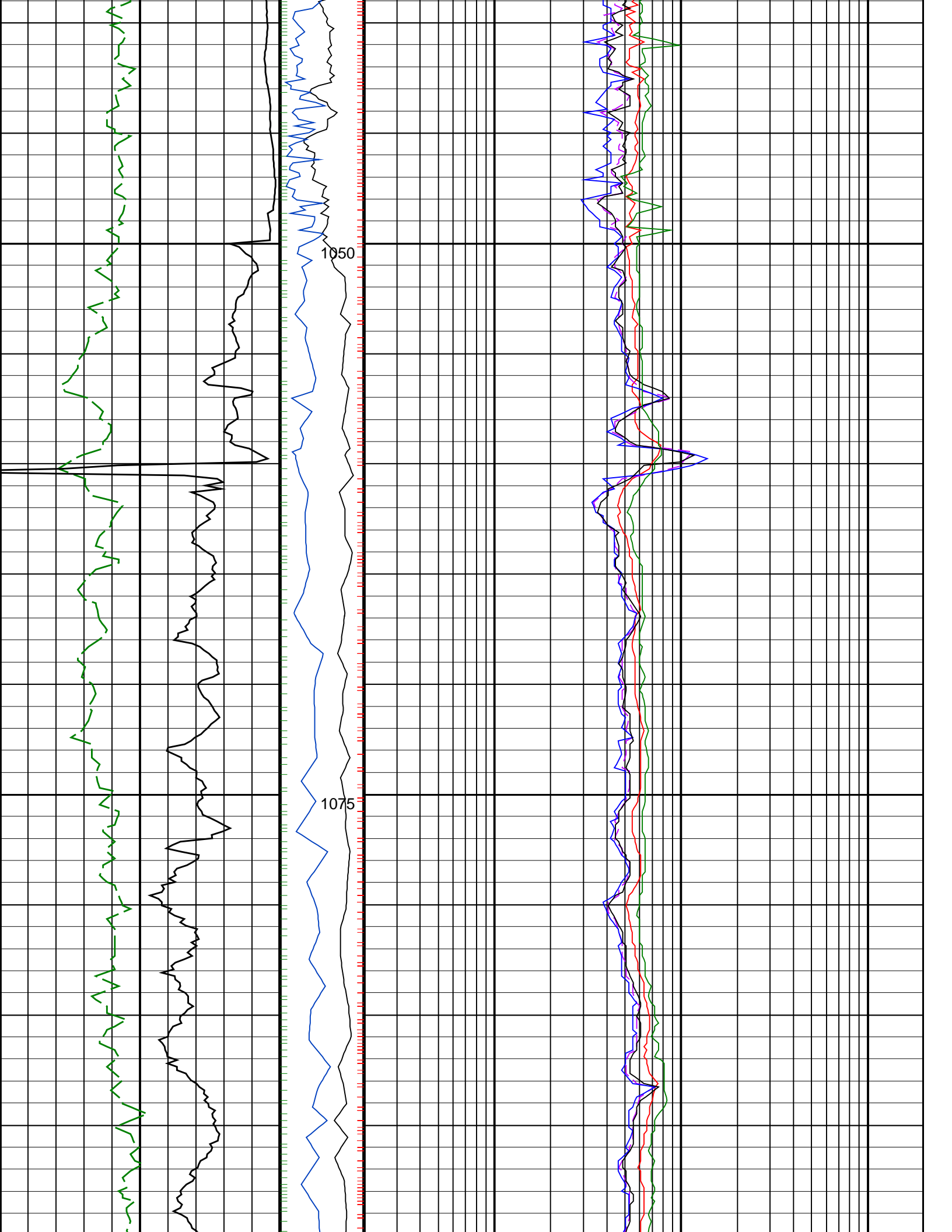


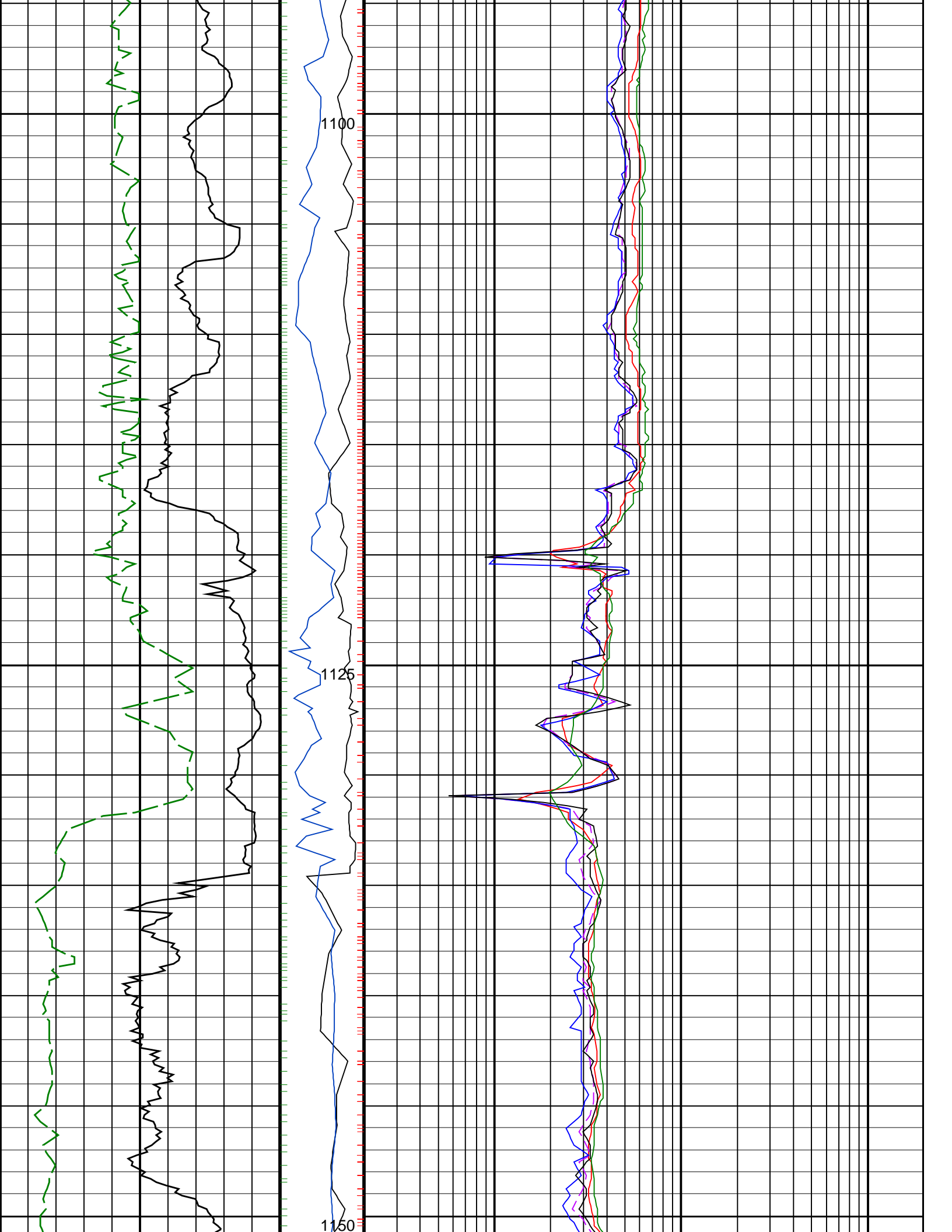


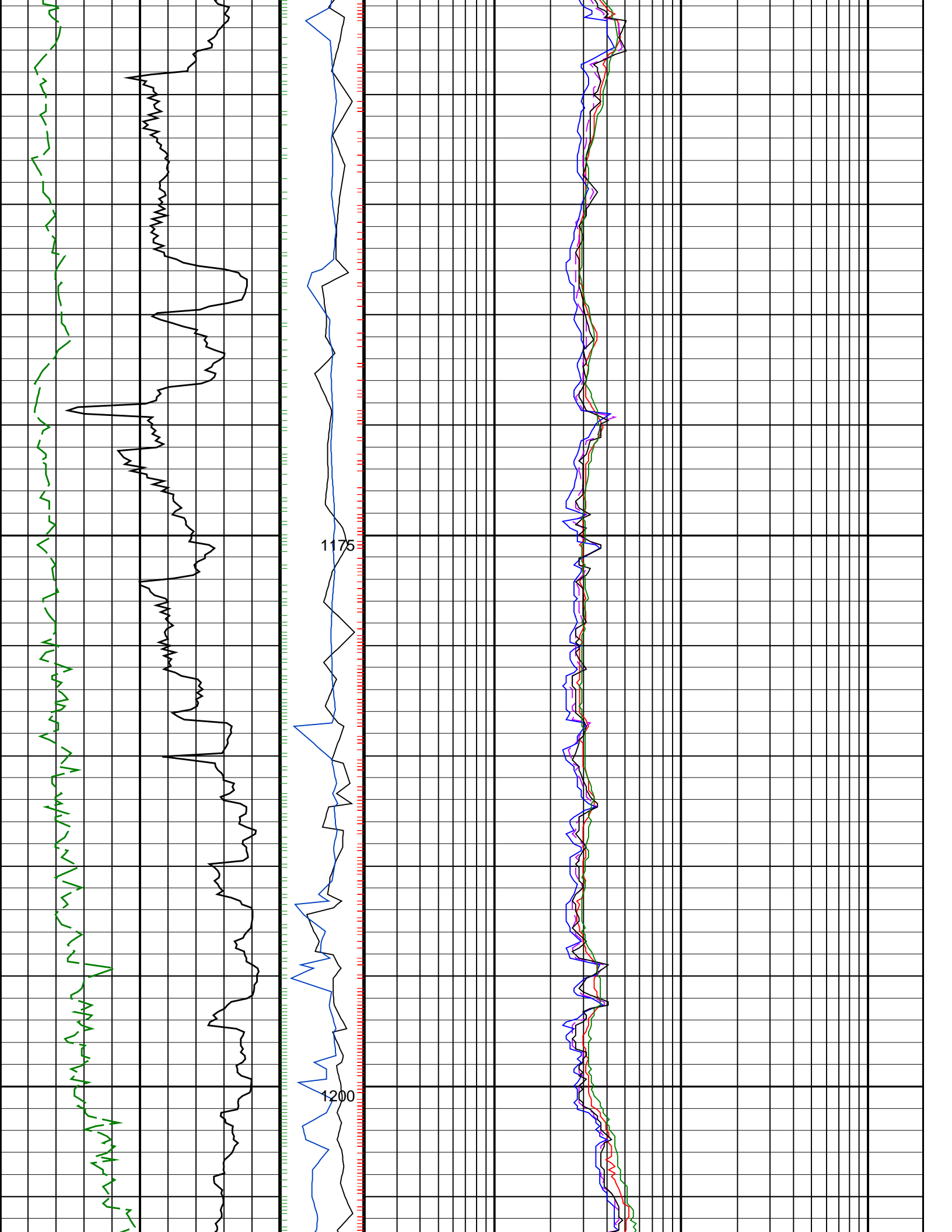


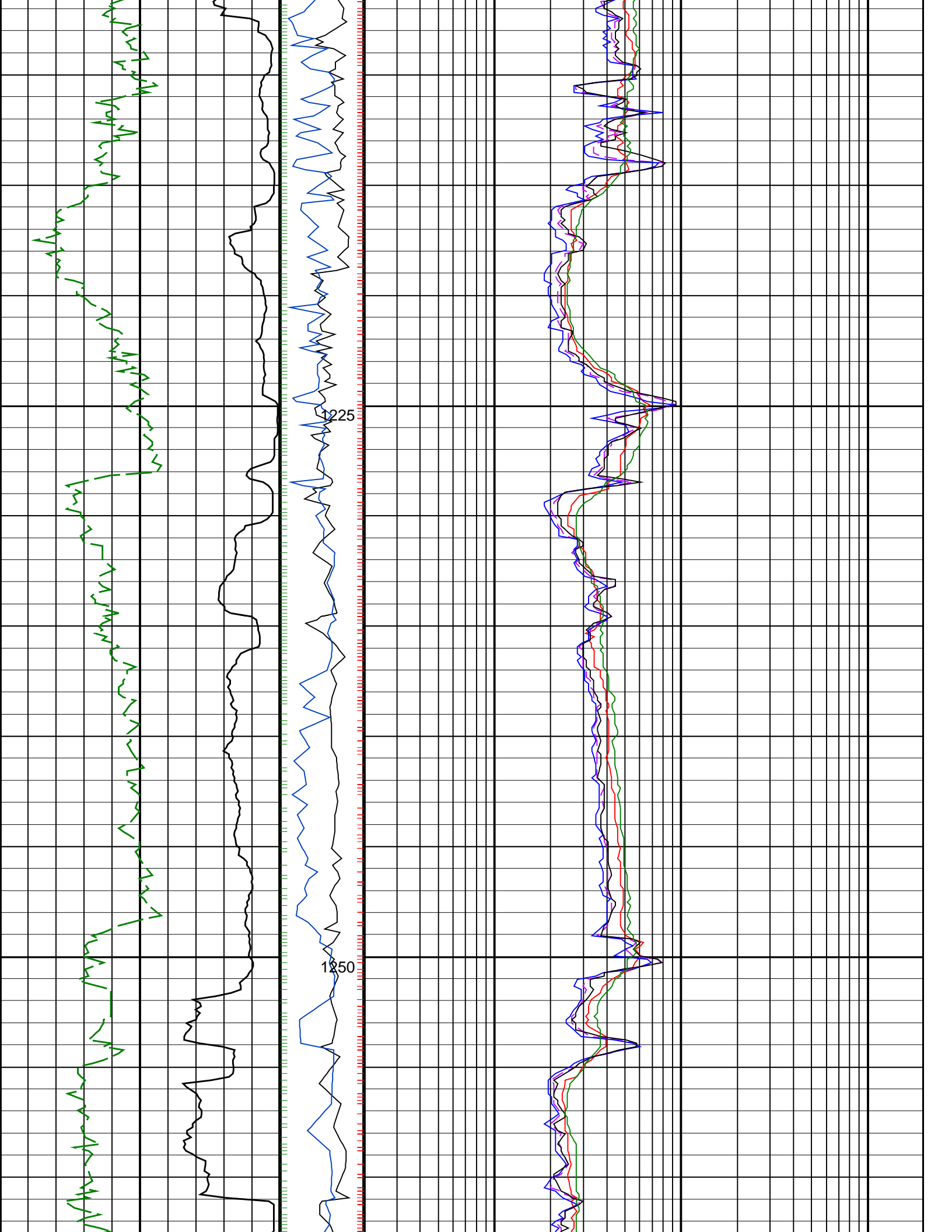


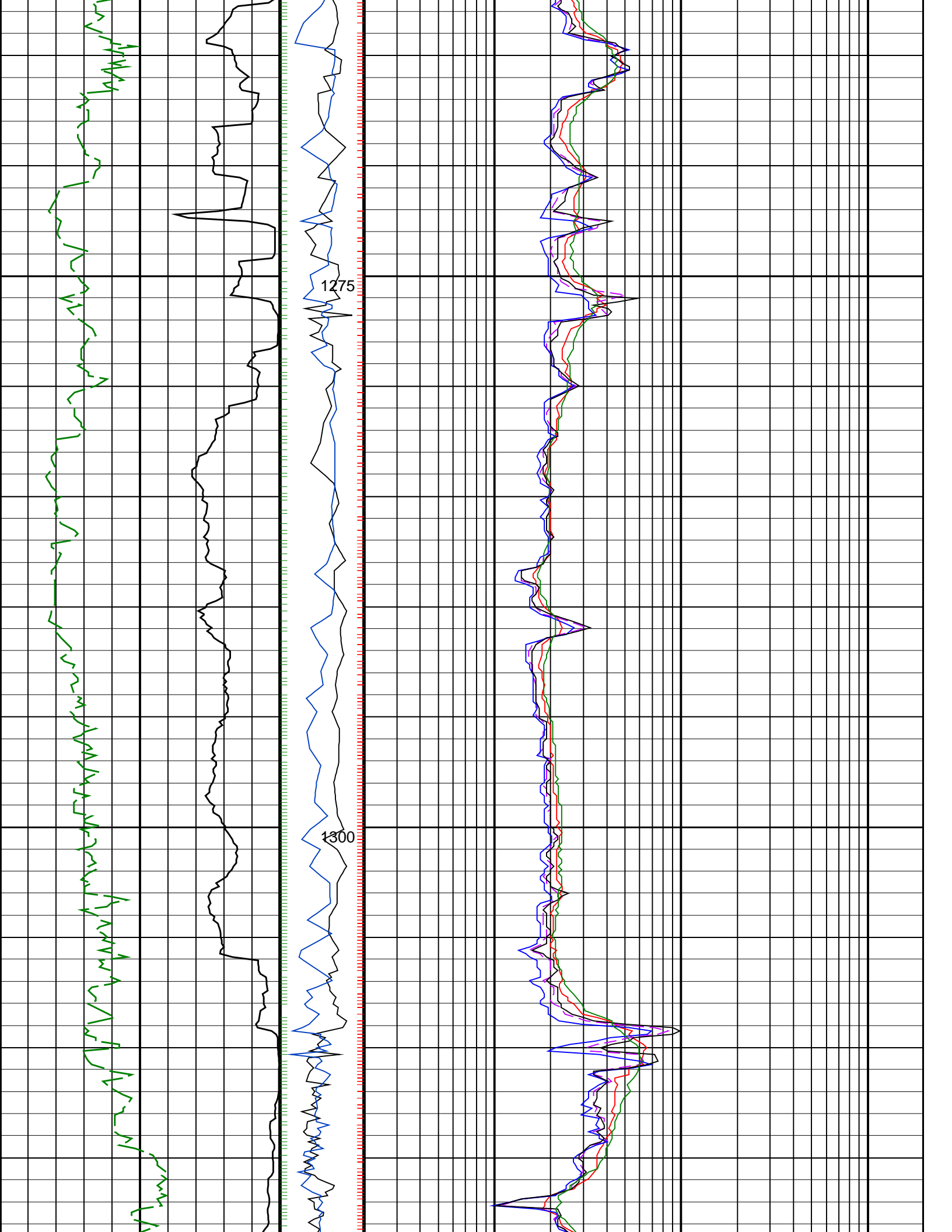


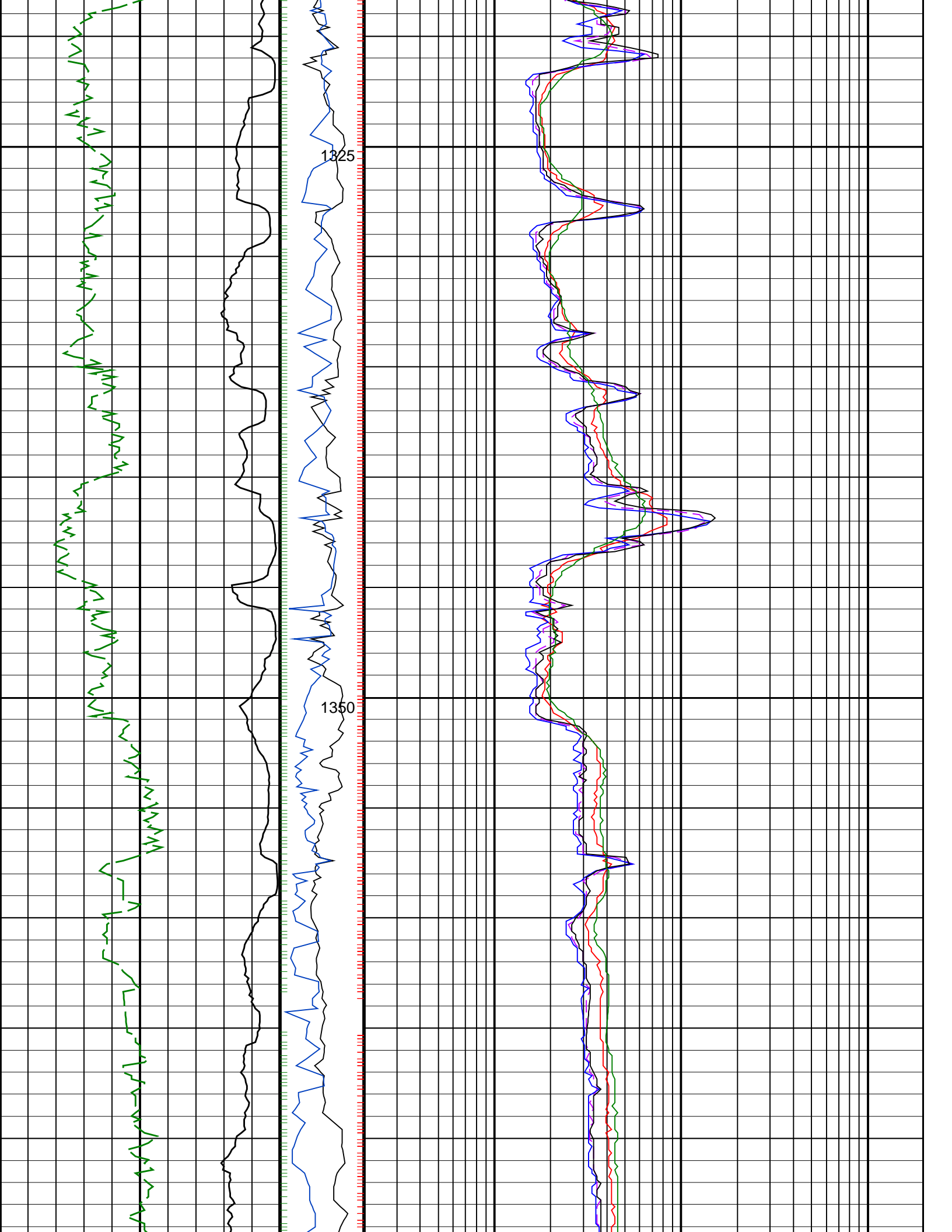


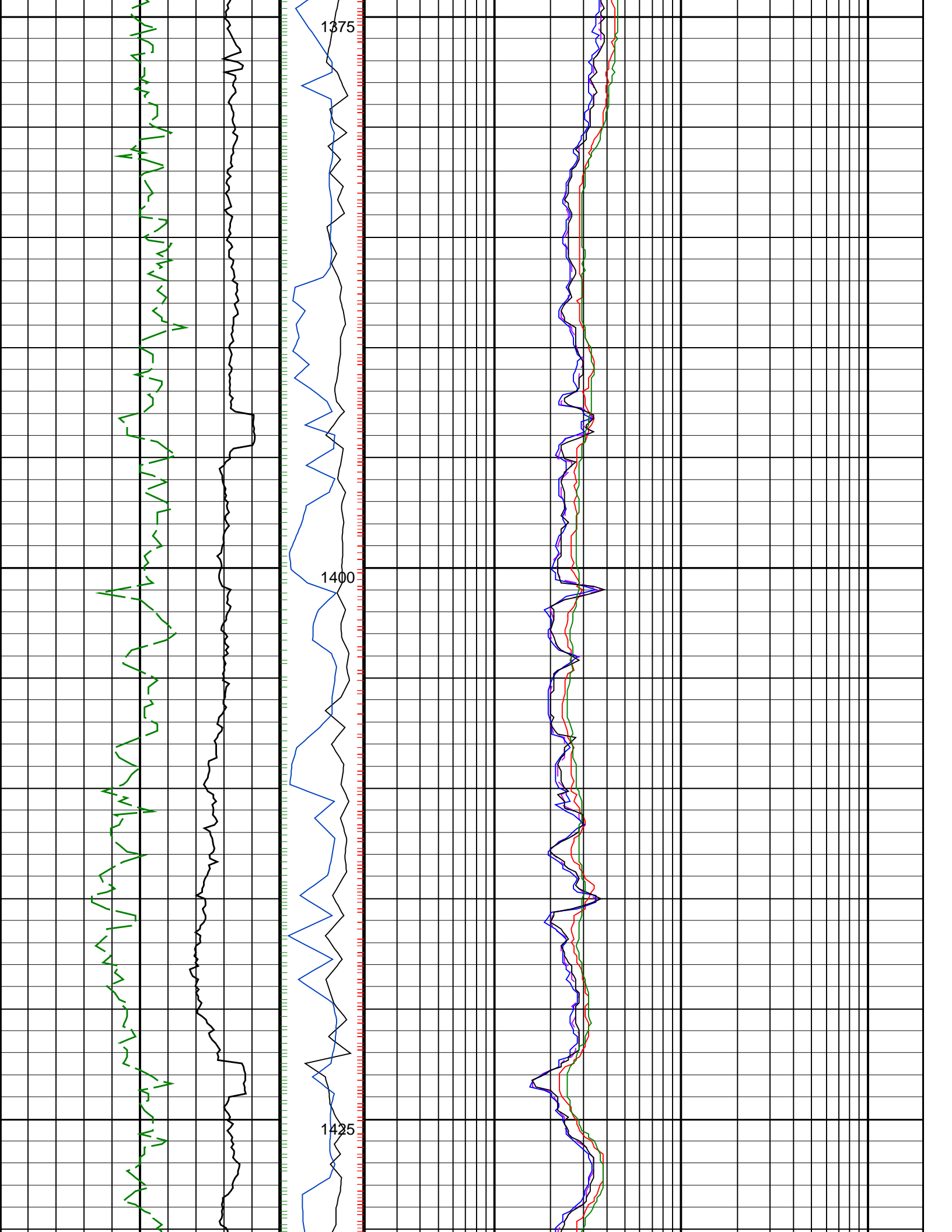


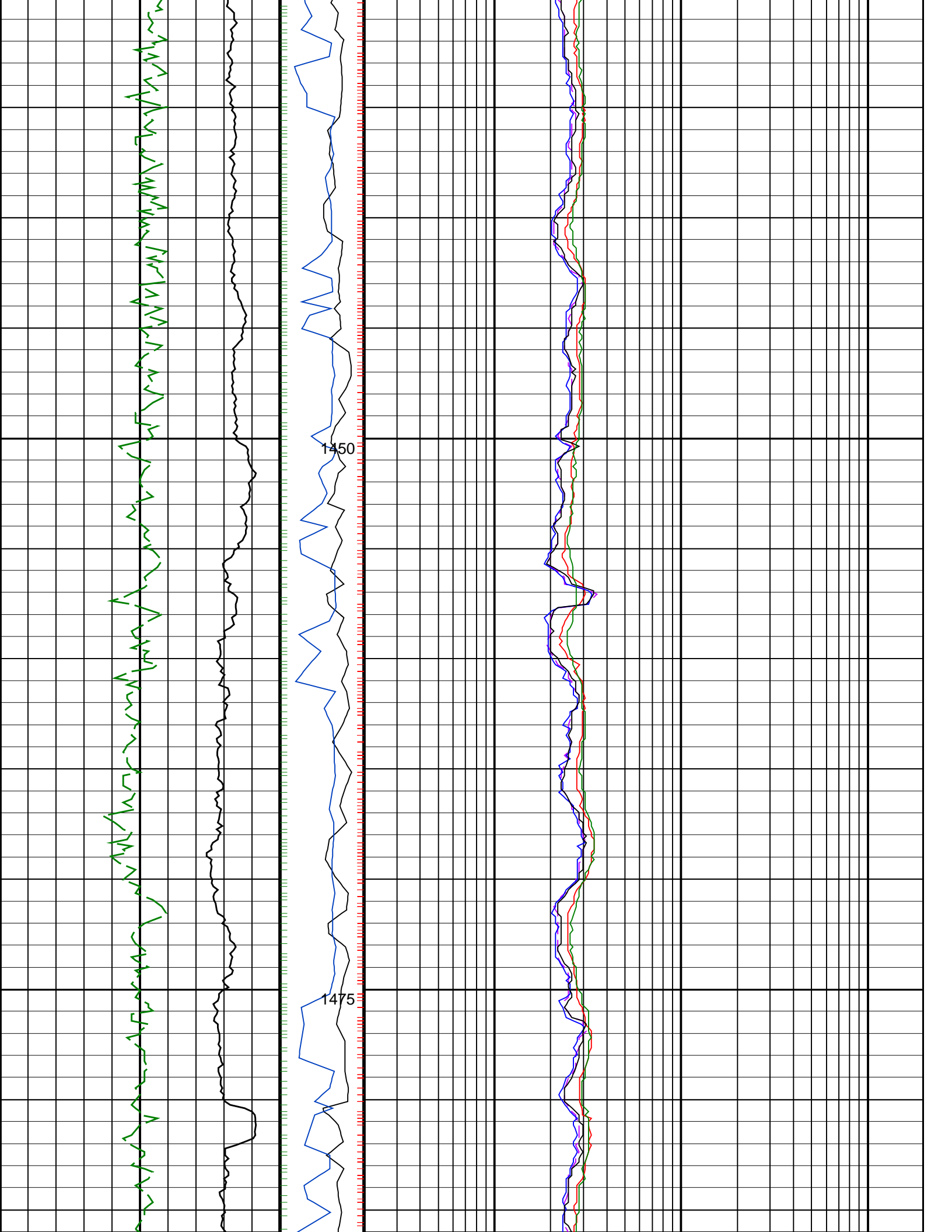


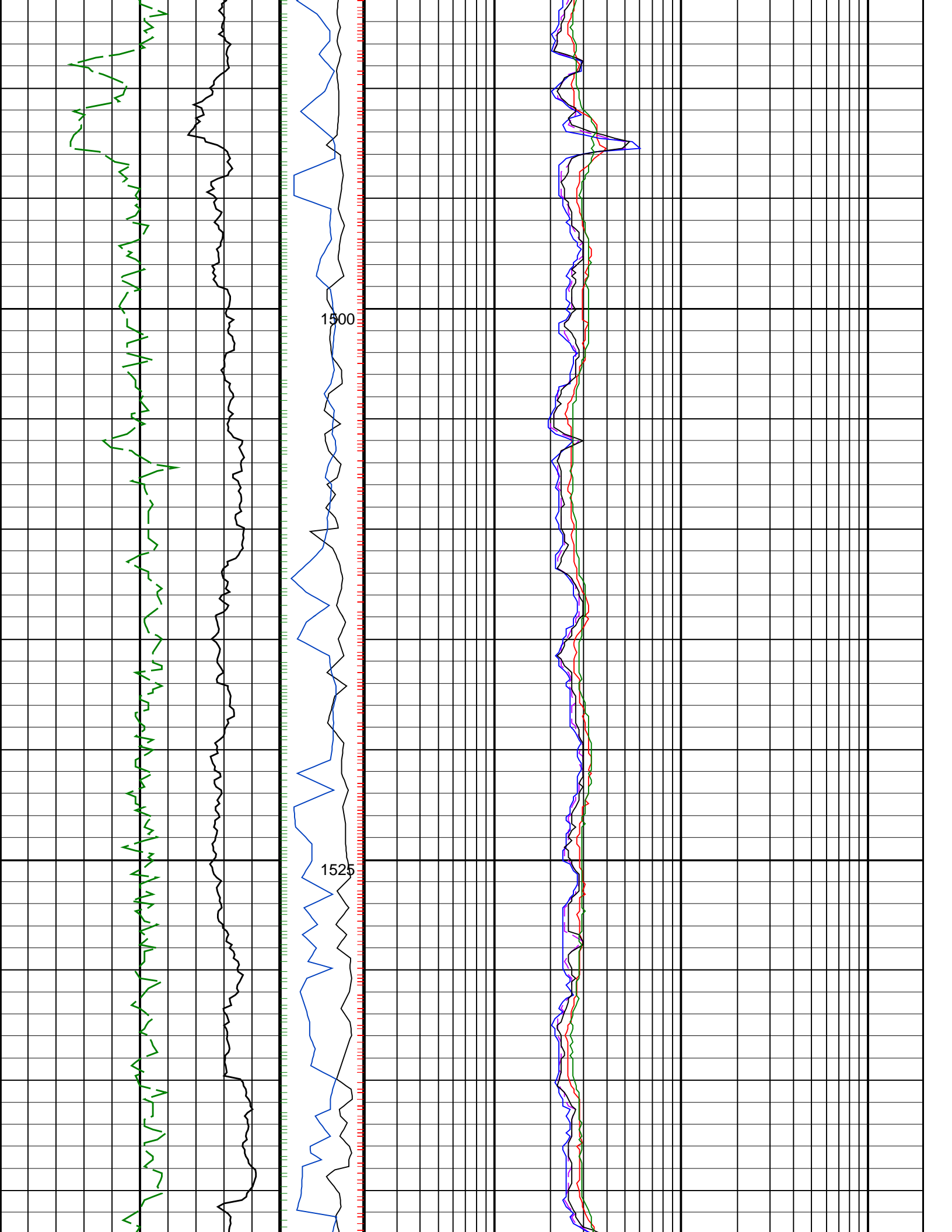


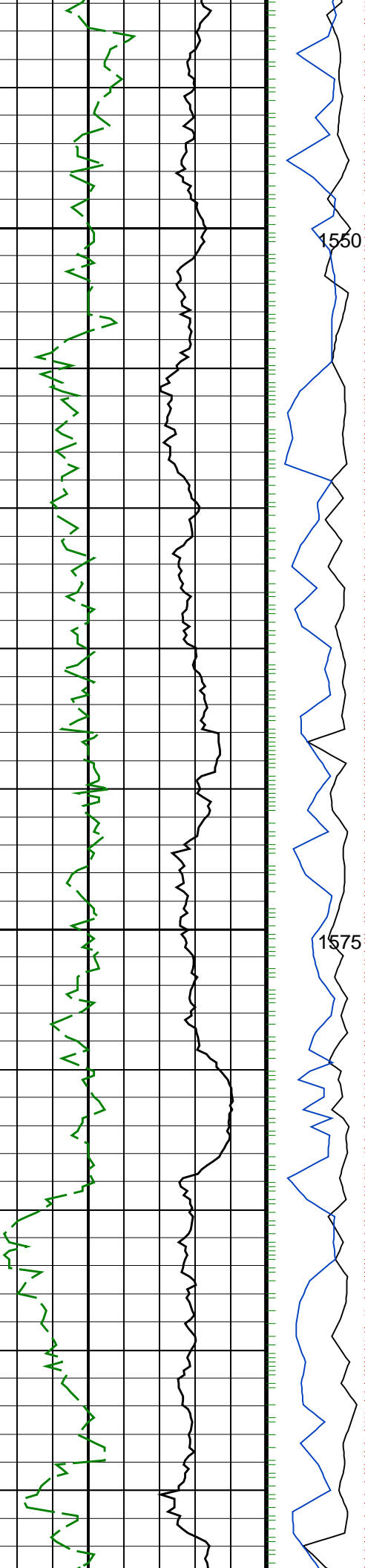






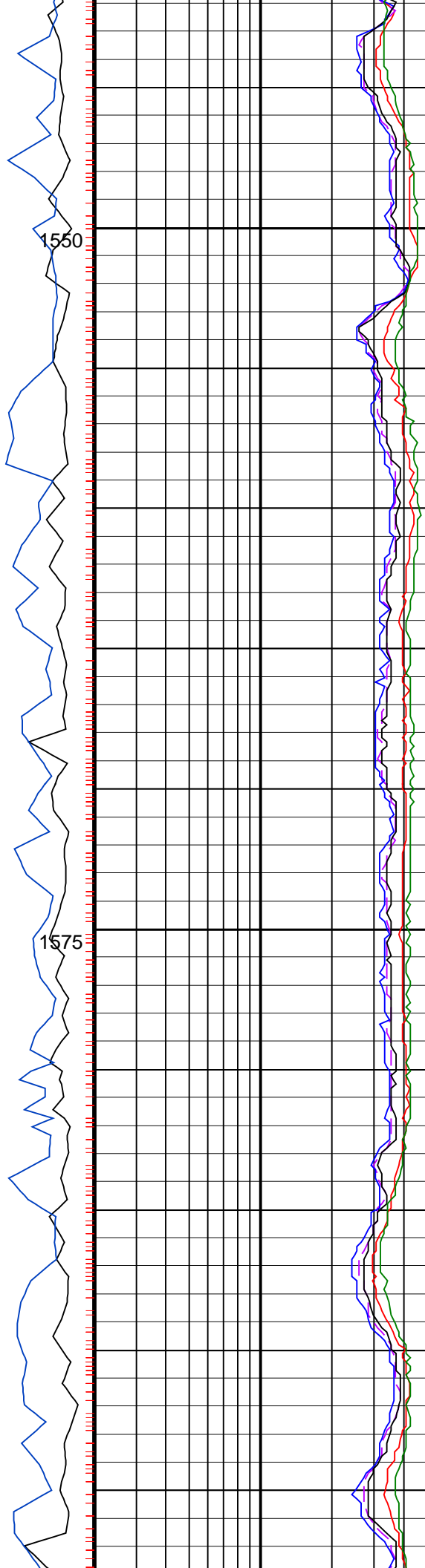


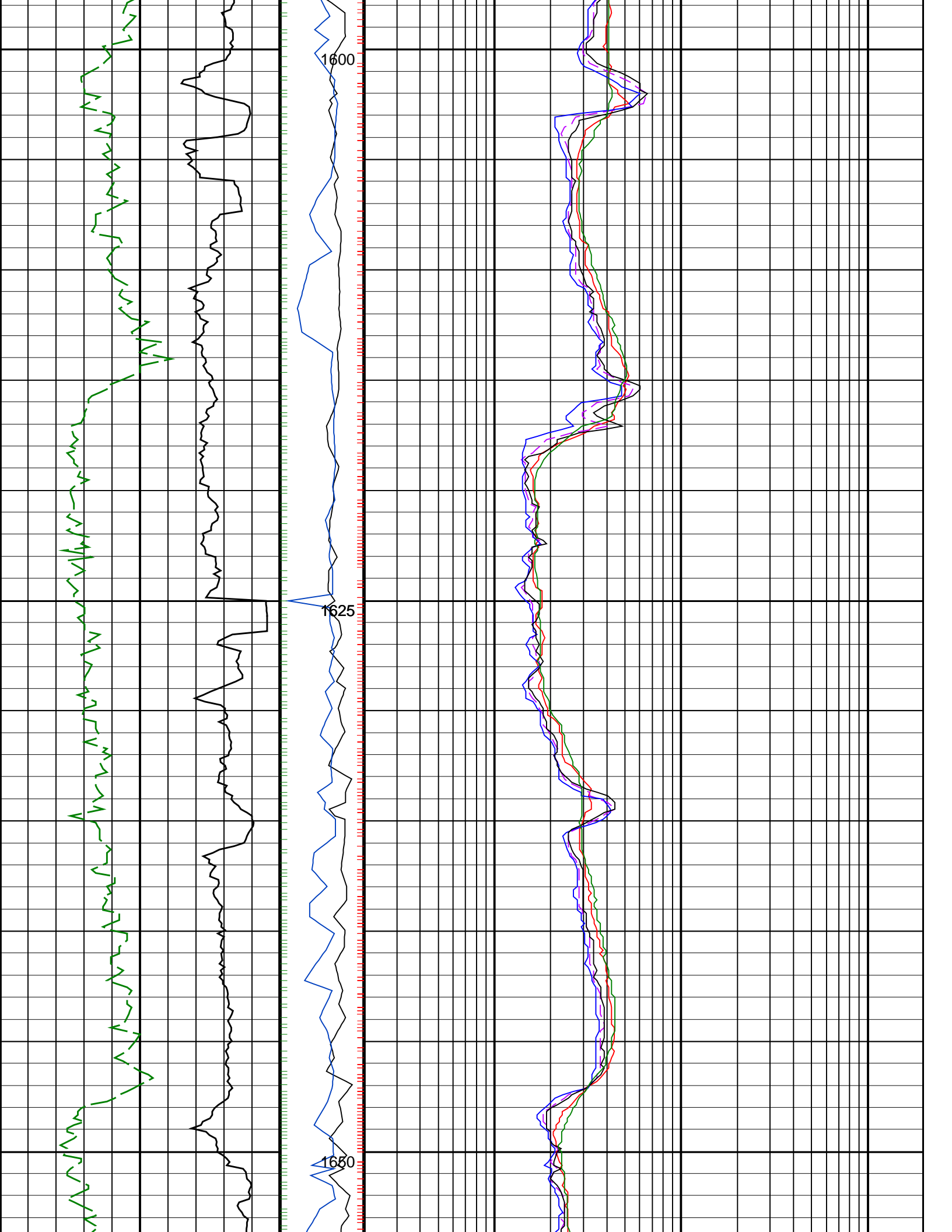


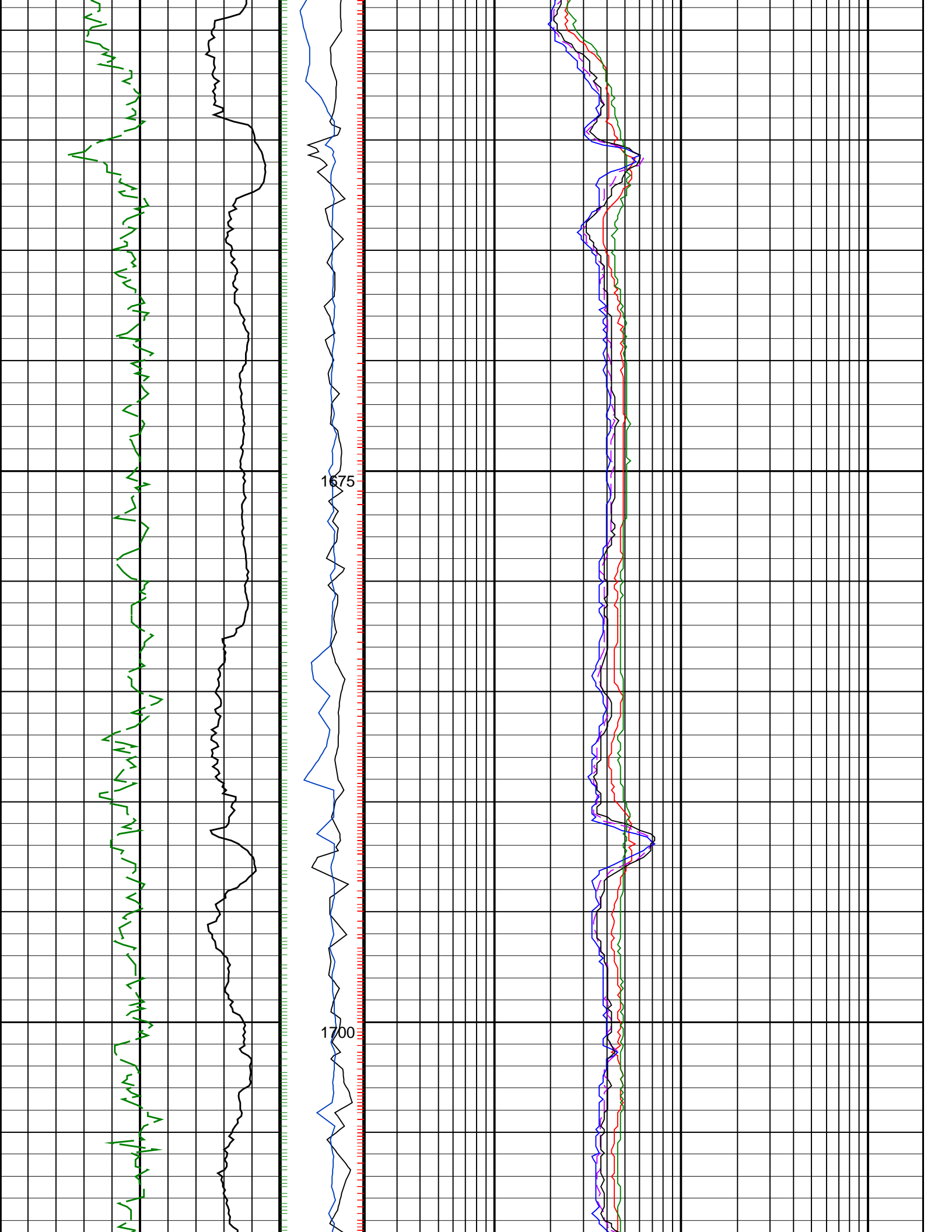


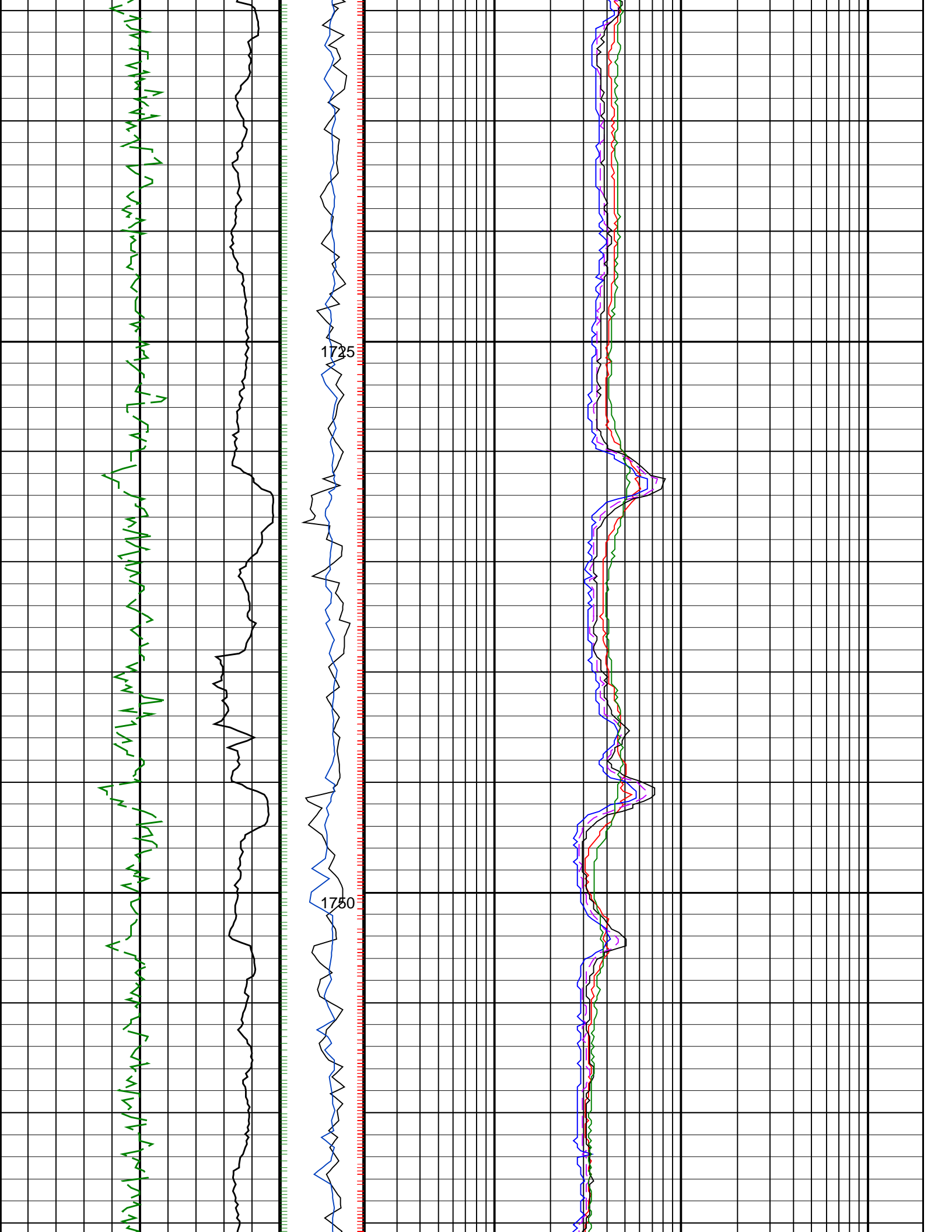
1550

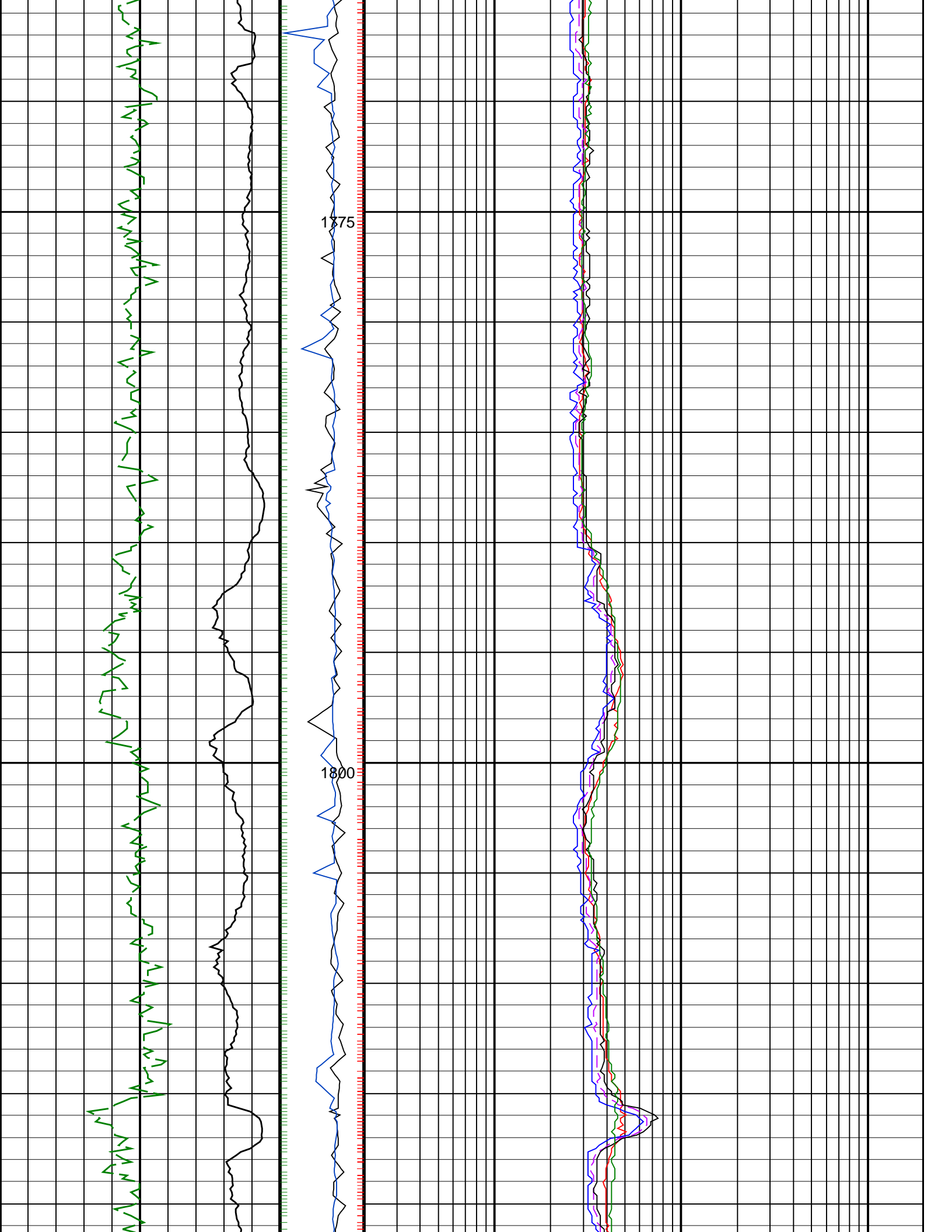
1575

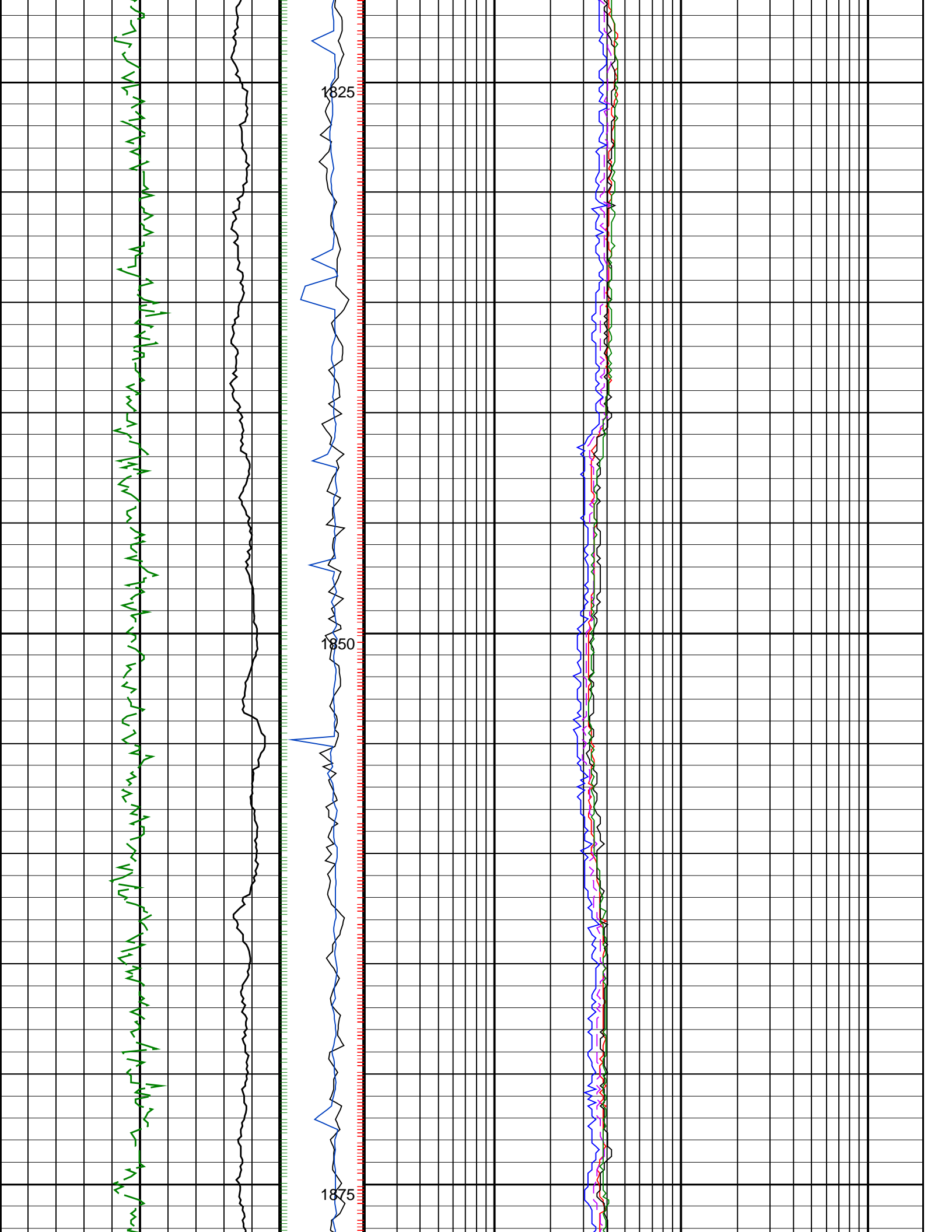


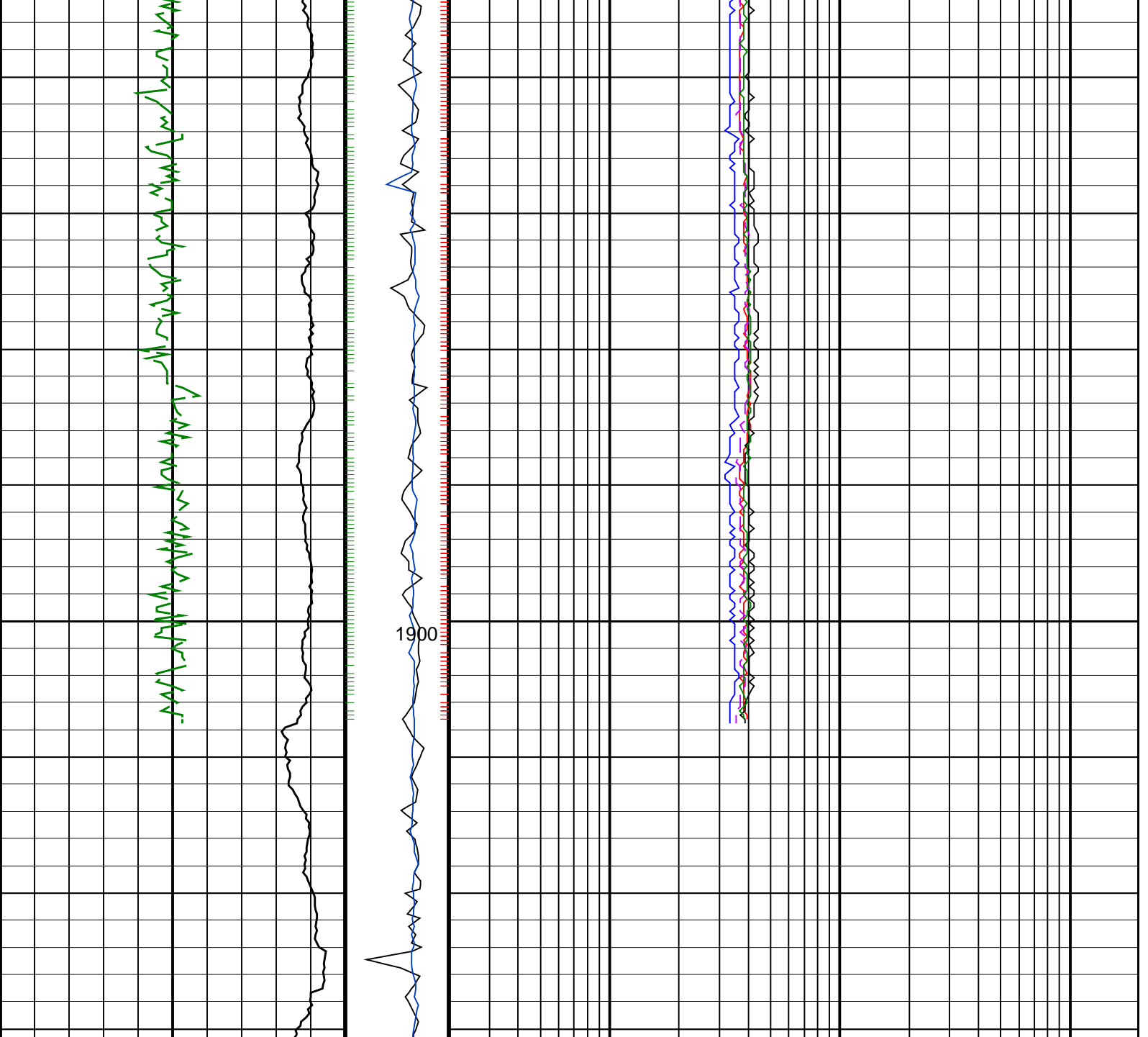












ROP*5 (ROP5) 200 (M/HR) 0	PKPK_RPM (Stick_RT) (RPM) 0 400	ARC BHCorr Attenuation Resistivity 40-in. at 2 MHz, Real-Time (A40H_RT) (OHMM) 0.2 200
ARC Gamma Ray, Real-Time (ARC_GR_RT) (GAPI) 0 200	MWD Collar RPM (CRPM_RT) (RPM) 0 200	ARC BHCorr Phase-Shift Resistivity 28-in. at 2 MHz, Real-Time (P28H_RT) (OHMM) 0.2 200
		ARC BHCorr Phase-Shift Resistivity 16-in. at 2 MHz, Real-Time (P16H_RT) (OHMM) 0.2 200
		ARC BHCorr Phase-Shift Resistivity 40-in. at 2 MHz, Real-Time (P40H_RT) (OHMM) 0.2 200
		ARC BHCorr Attenuation Resistivity 40-in. at 400 KHz, Real-Time (A40L_RT) (OHMM) 0.2 200

PIP SUMMARY

- ┆ ARC Gamma Ray Samples
- ┆ ARC Resistivity Samples

