

Henry2DW1ST1 LWD RT 200MD

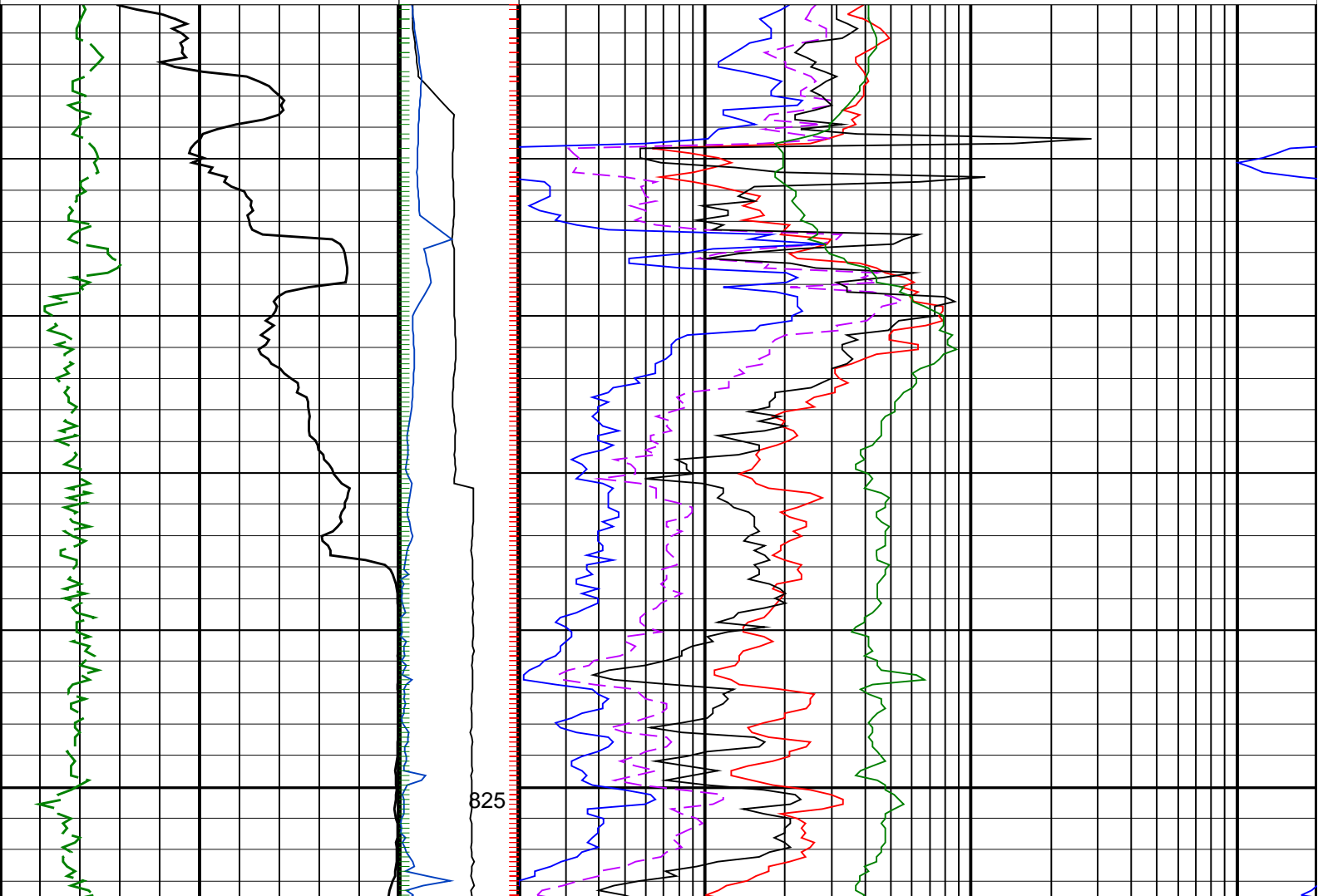
IDEAL Version: ID13_0C_11 <MD > Vertical Scale: 1:200

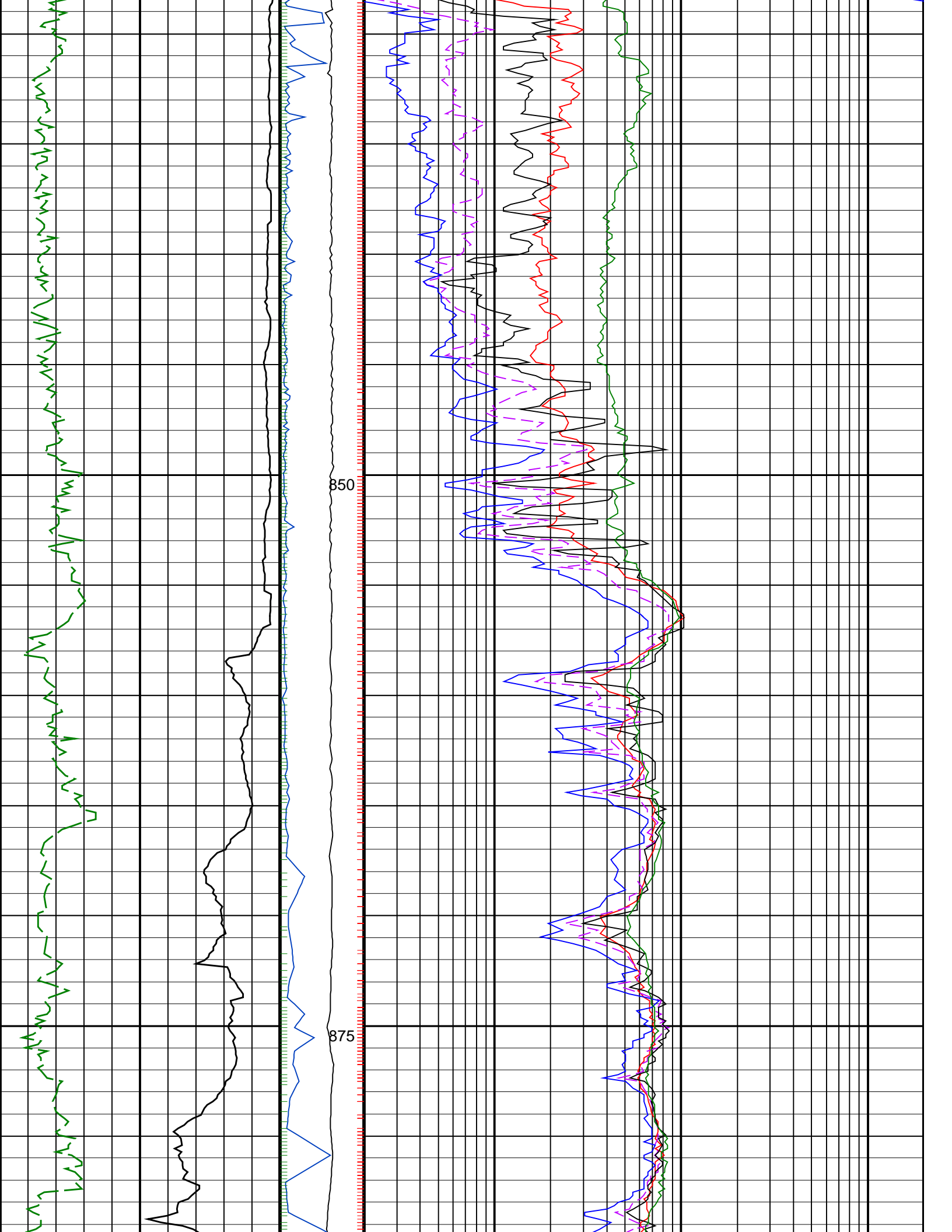
Graphics File Created: 07-Oct-2008 03:07

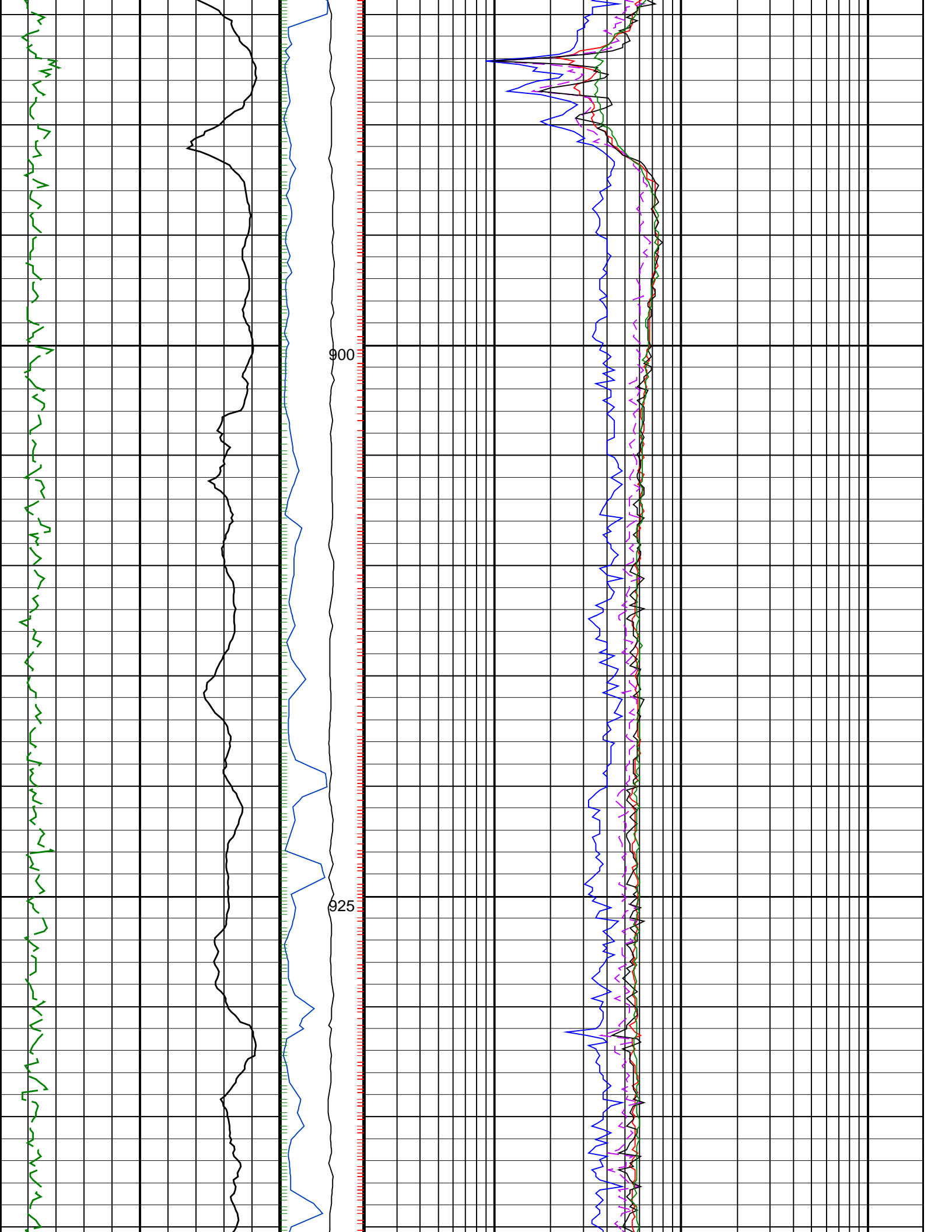
PIP SUMMARY

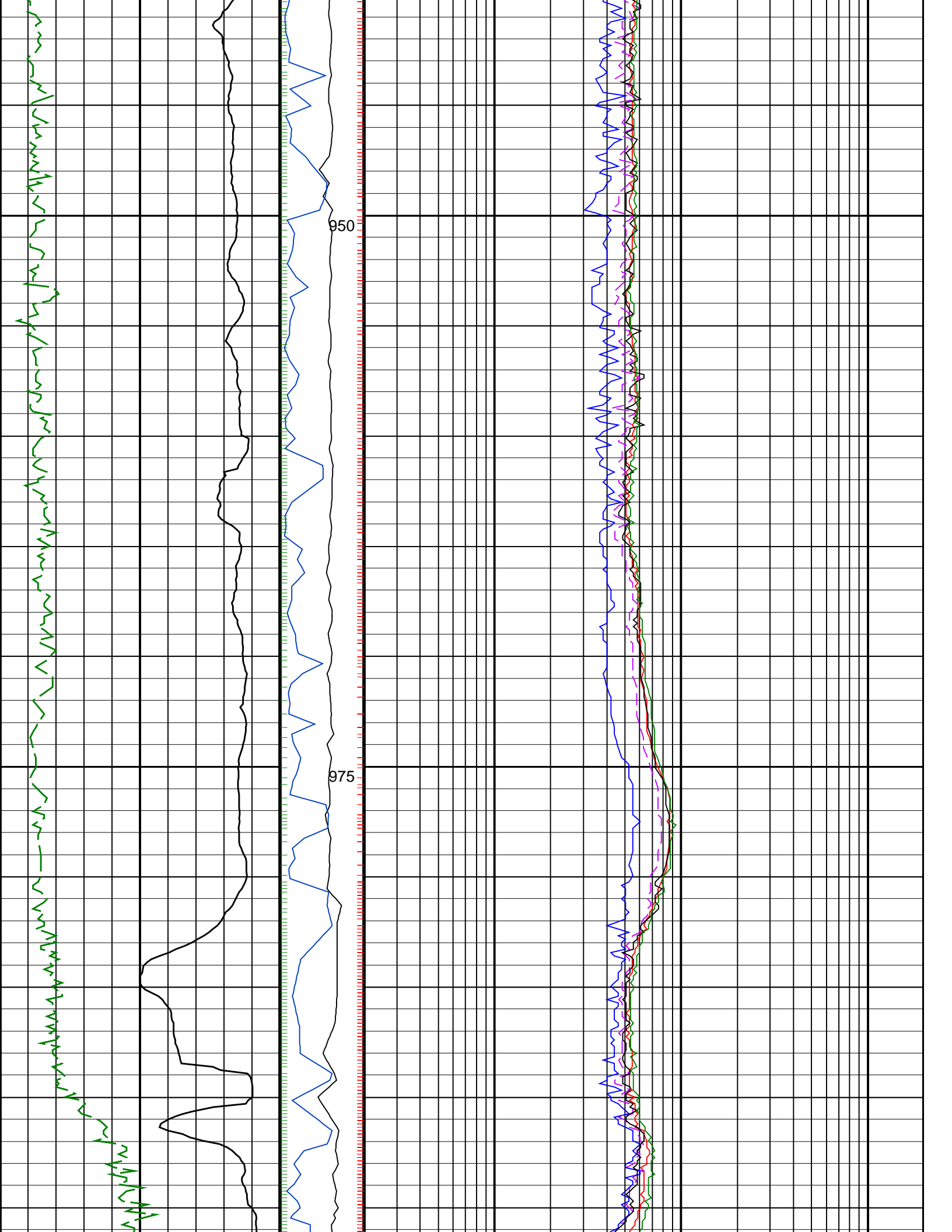
- ┆ ARC Gamma Ray Samples
- ┆ ARC Resistivity Samples
- ┆ IMP RP28 PIP

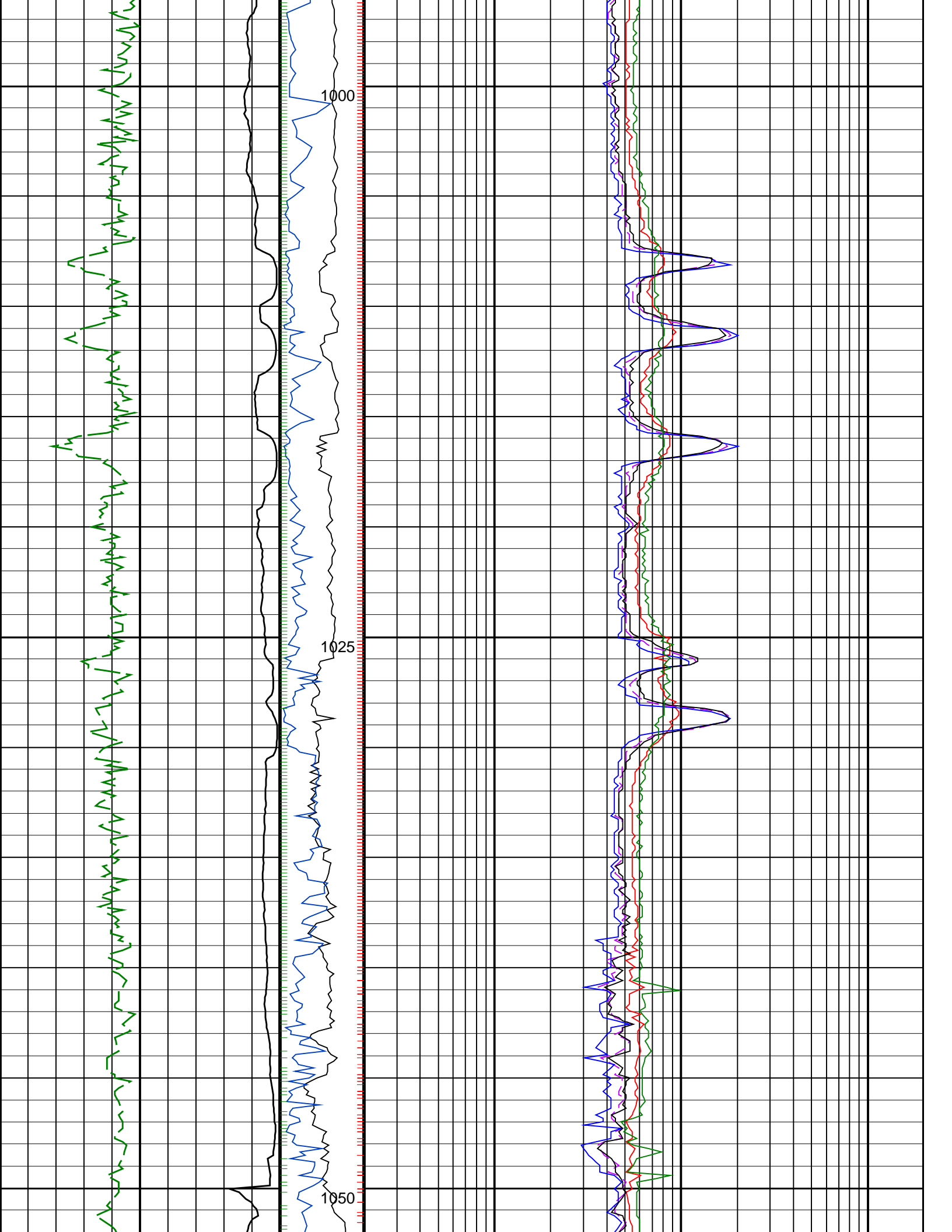
		ARC BHCorr Attenuation Resistivity 40-in. at 400 KHz, Real-Time (A40L_RT)	
0.2		(OHMM)	200
		ARC BHCorr Phase-Shift Resistivity 40-in. at 2 MHz, Real-Time (P40H_RT)	
0.2		(OHMM)	200
		ARC BHCorr Phase-Shift Resistivity 16-in. at 2 MHz, Real-Time (P16H_RT)	
0.2		(OHMM)	200
ARC Gamma Ray, Real-Time (ARC_GR_RT)	MWD Collar RPM (CRPM_RT) (RPM)	ARC BHCorr Phase-Shift Resistivity 28-in. at 2 MHz, Real-Time (P28H_RT)	
0 (GAPI) 200	0 200	0.2	(OHMM) 200
ROP*5 (ROP5) (M/HR)	PKPK_RPM (Stick_RT) (RPM)	ARC BHCorr Attenuation Resistivity 40-in. at 2 MHz, Real-Time (A40H_RT)	
200	0 400	0.2	(OHMM) 200

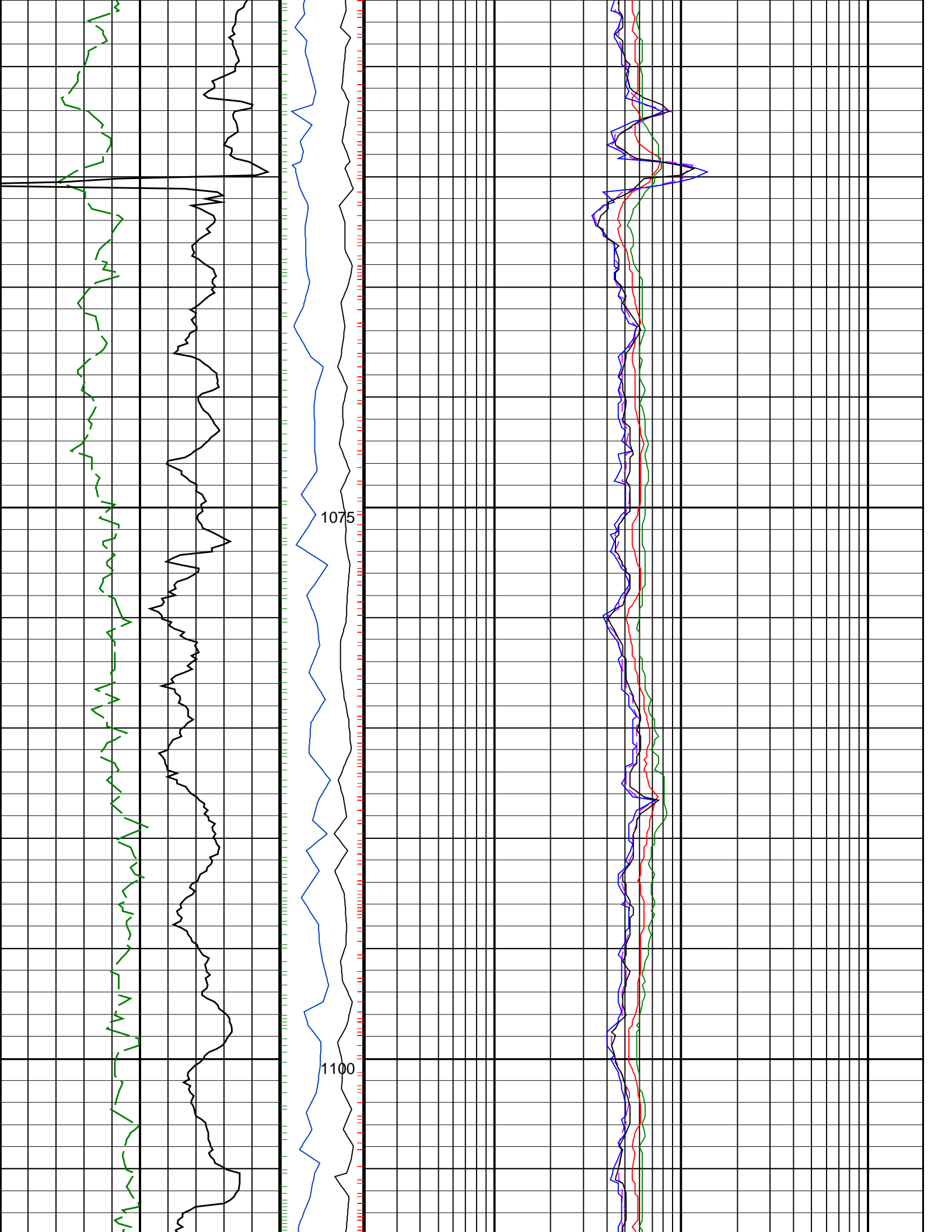


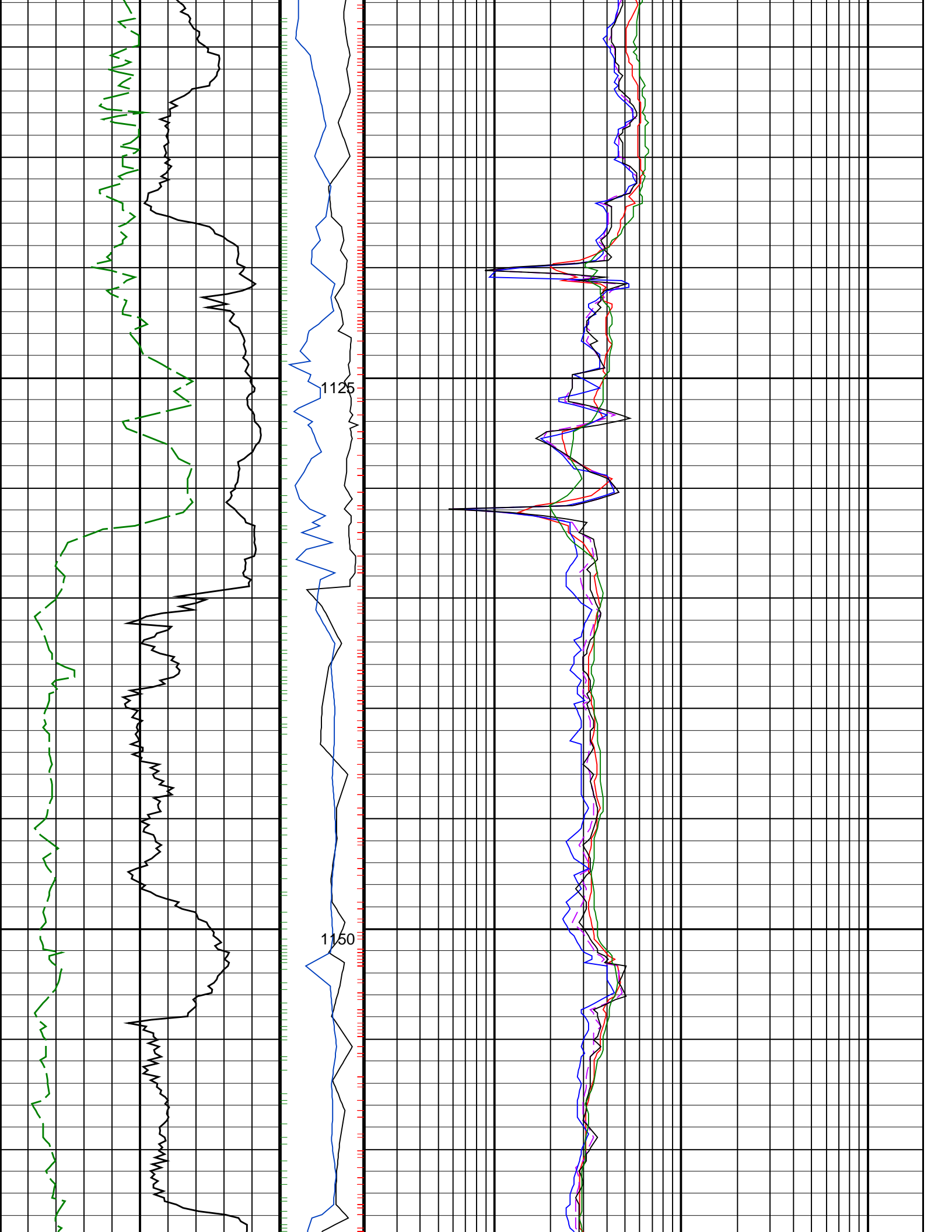


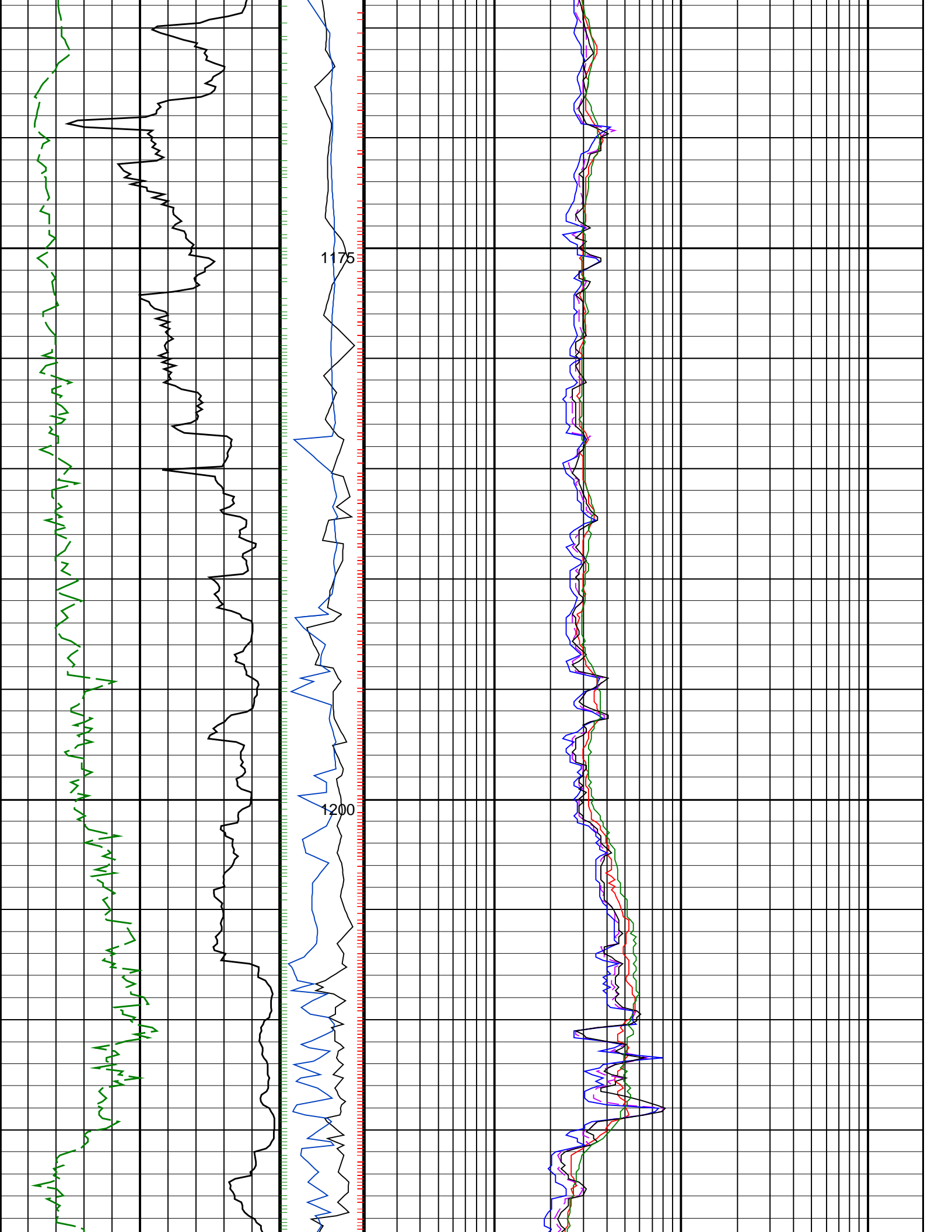


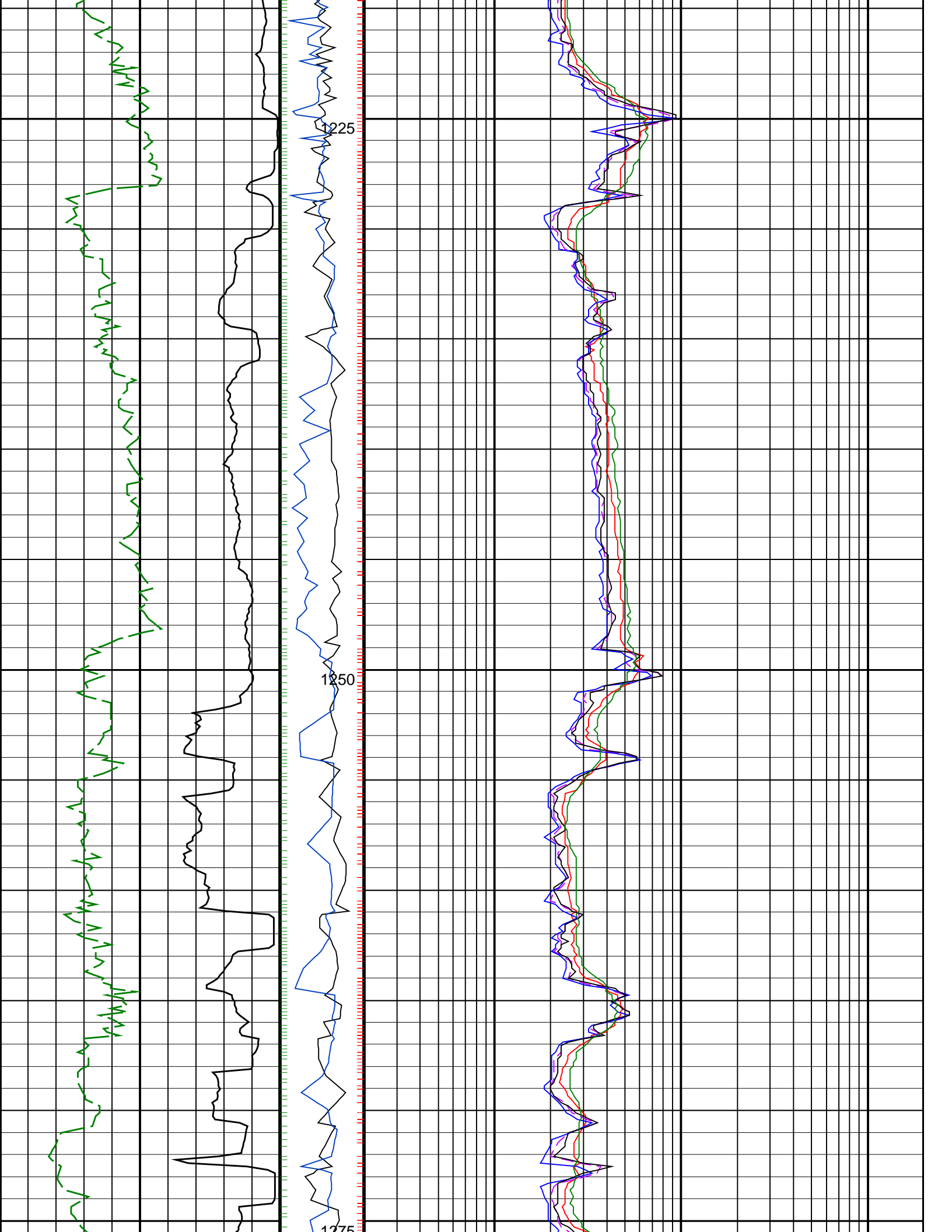


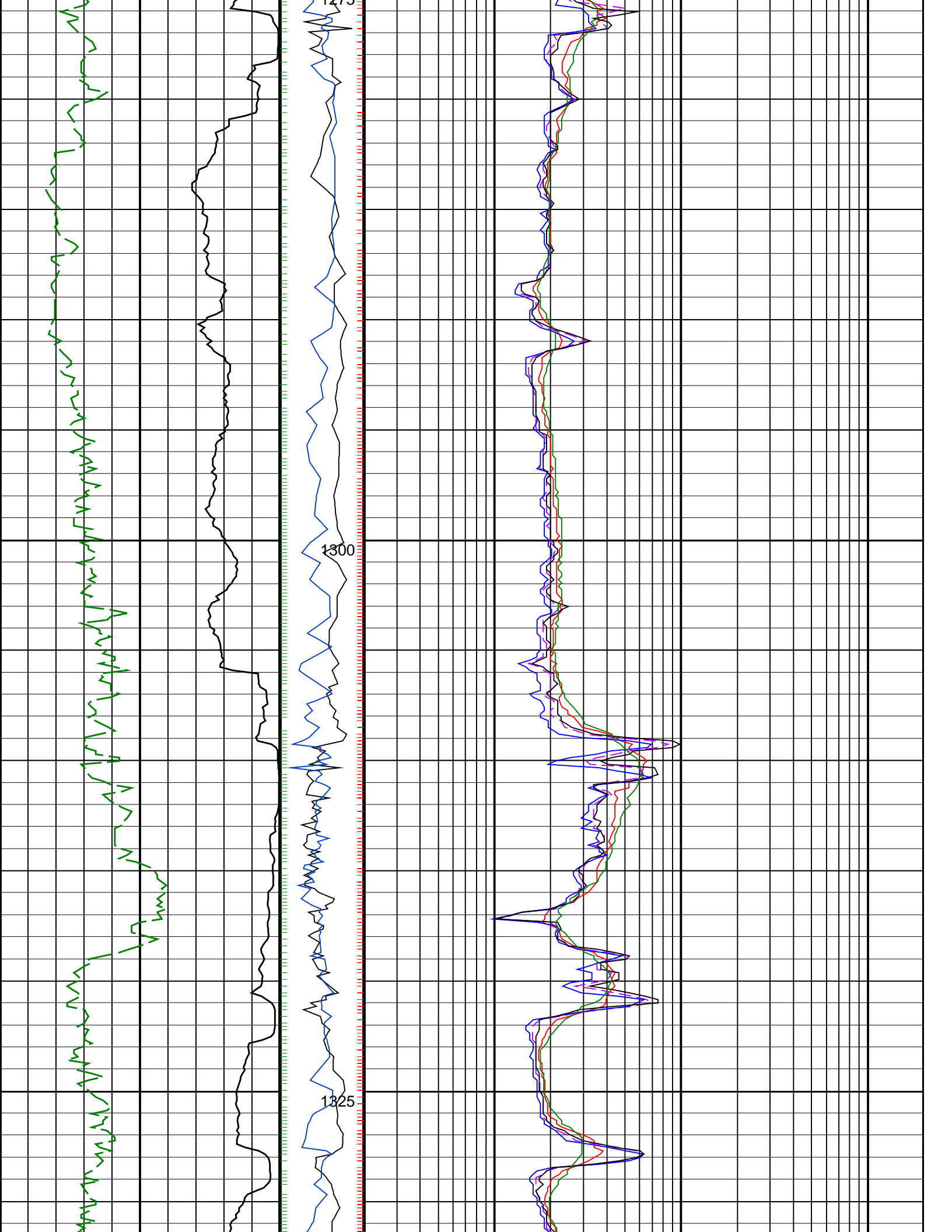


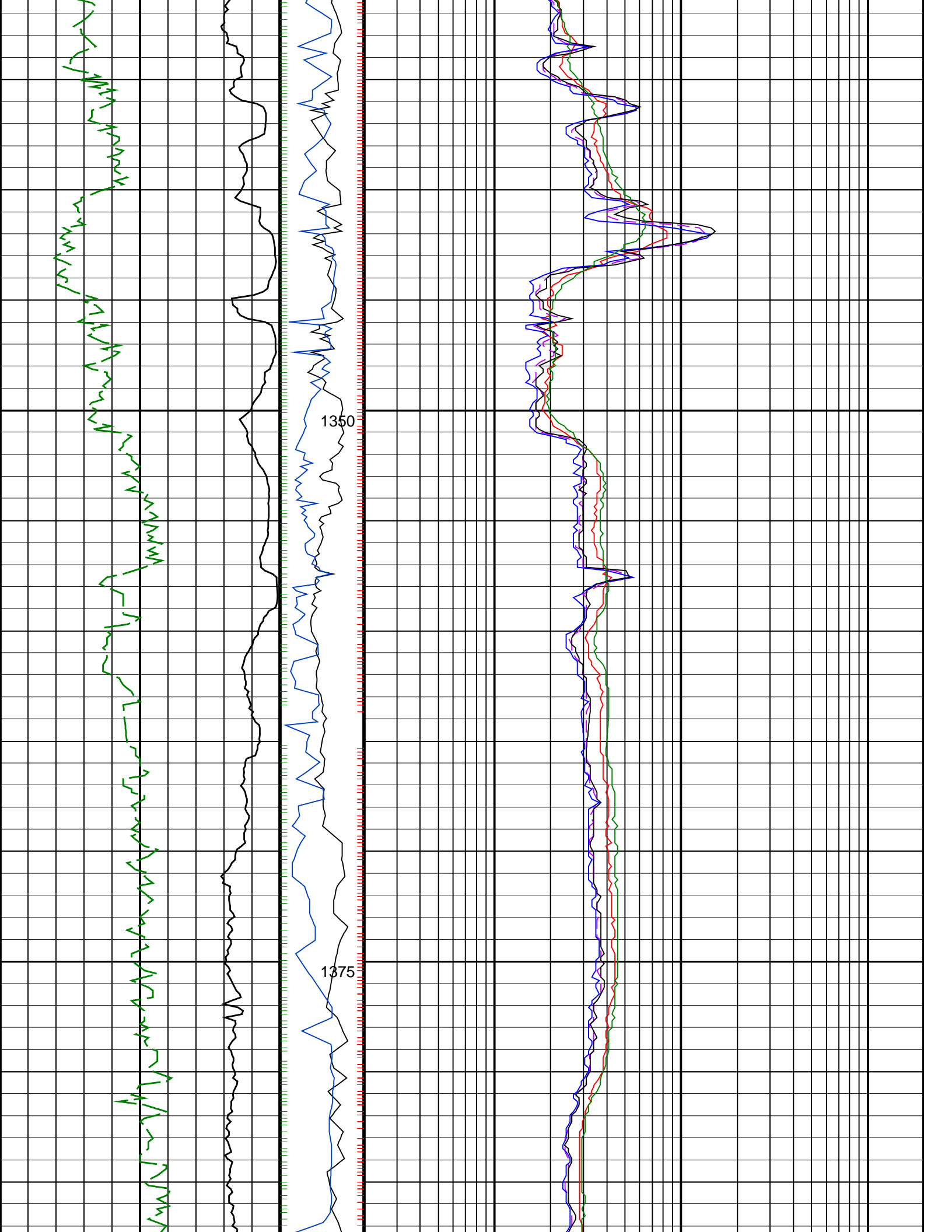


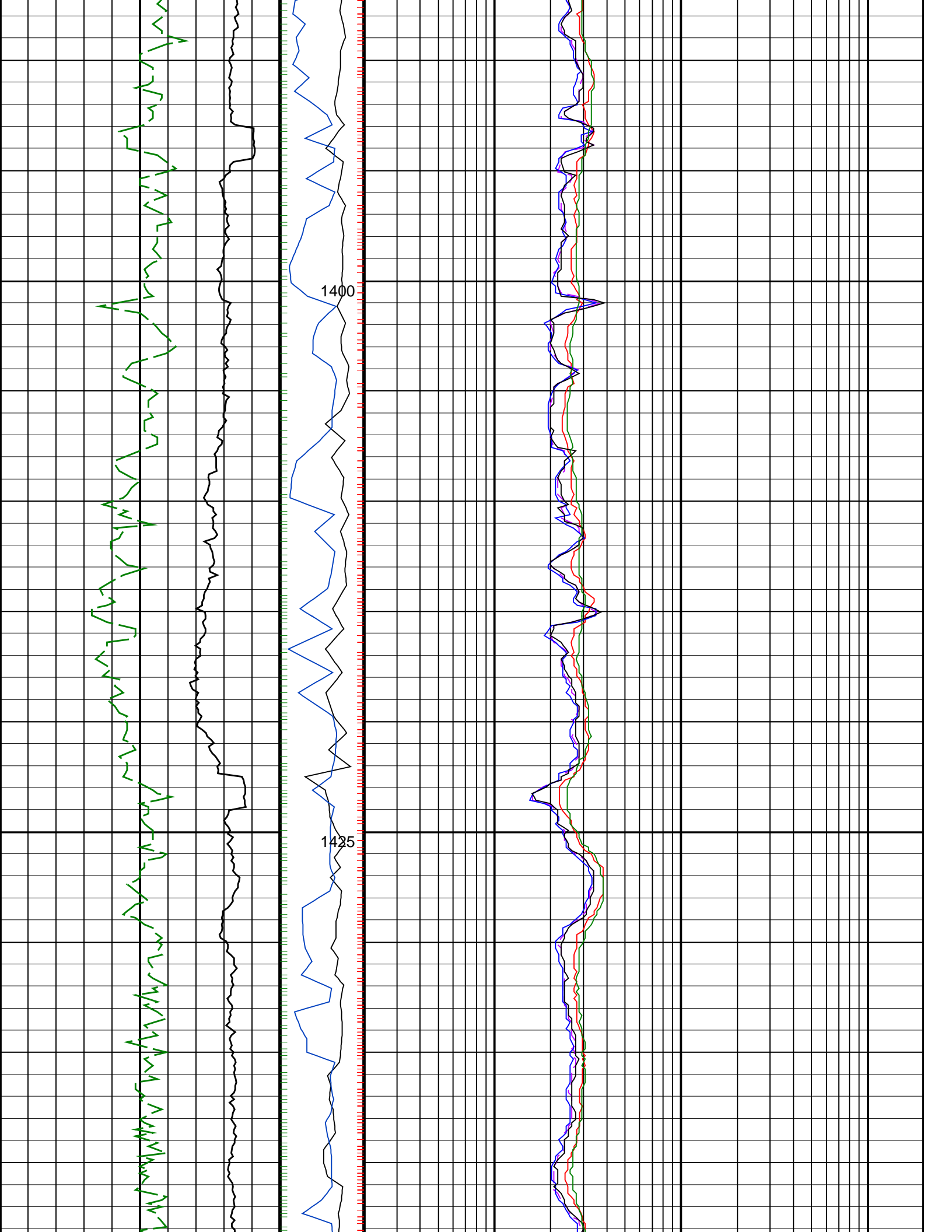


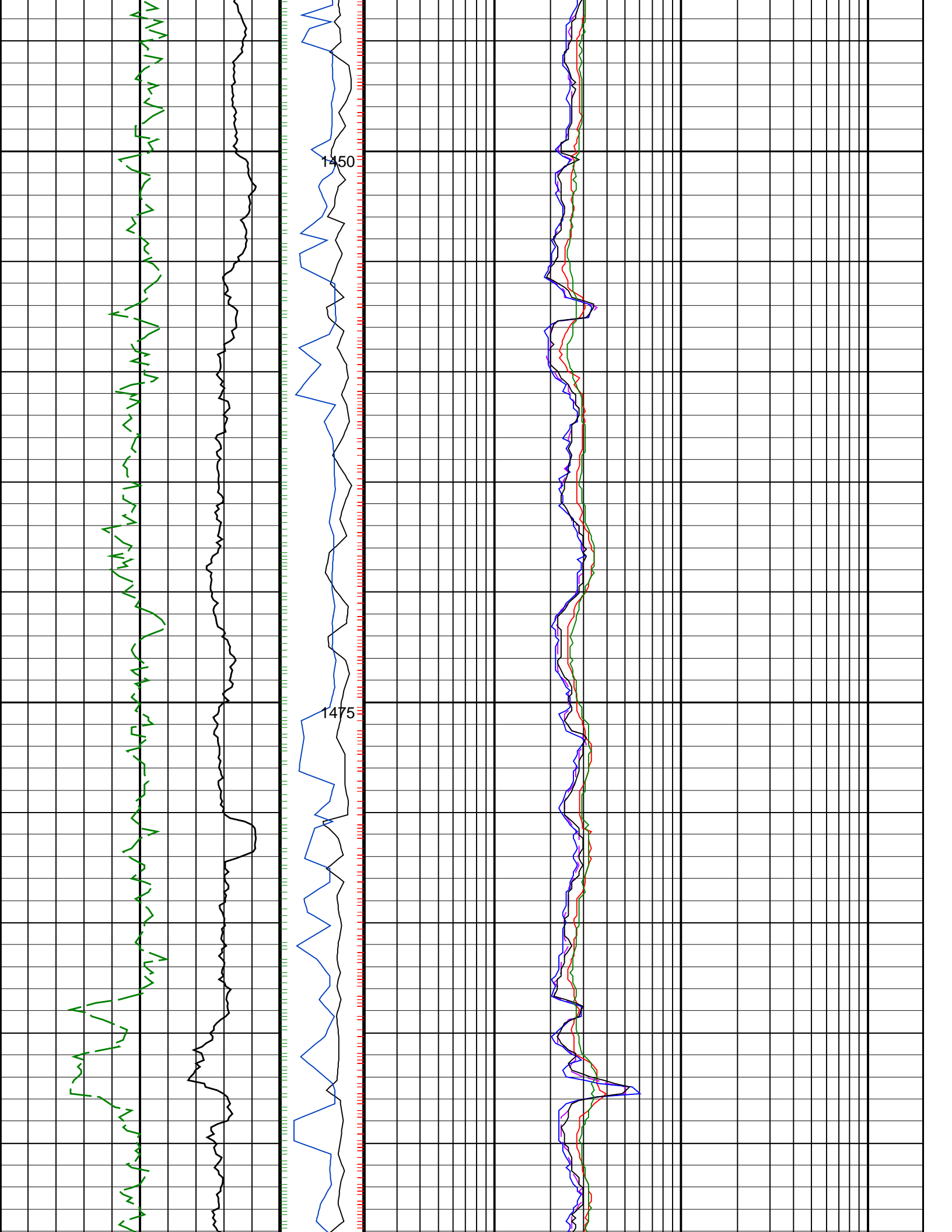


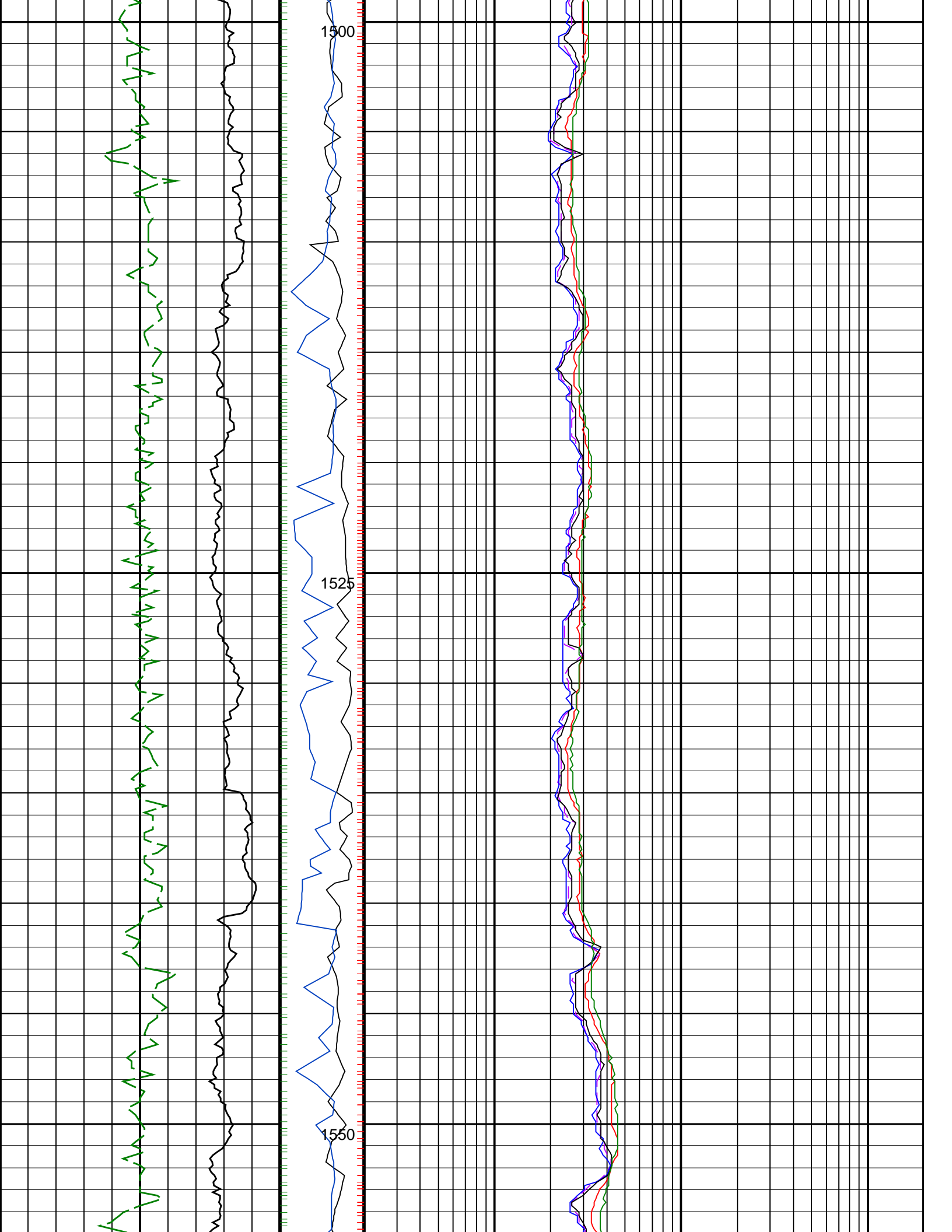


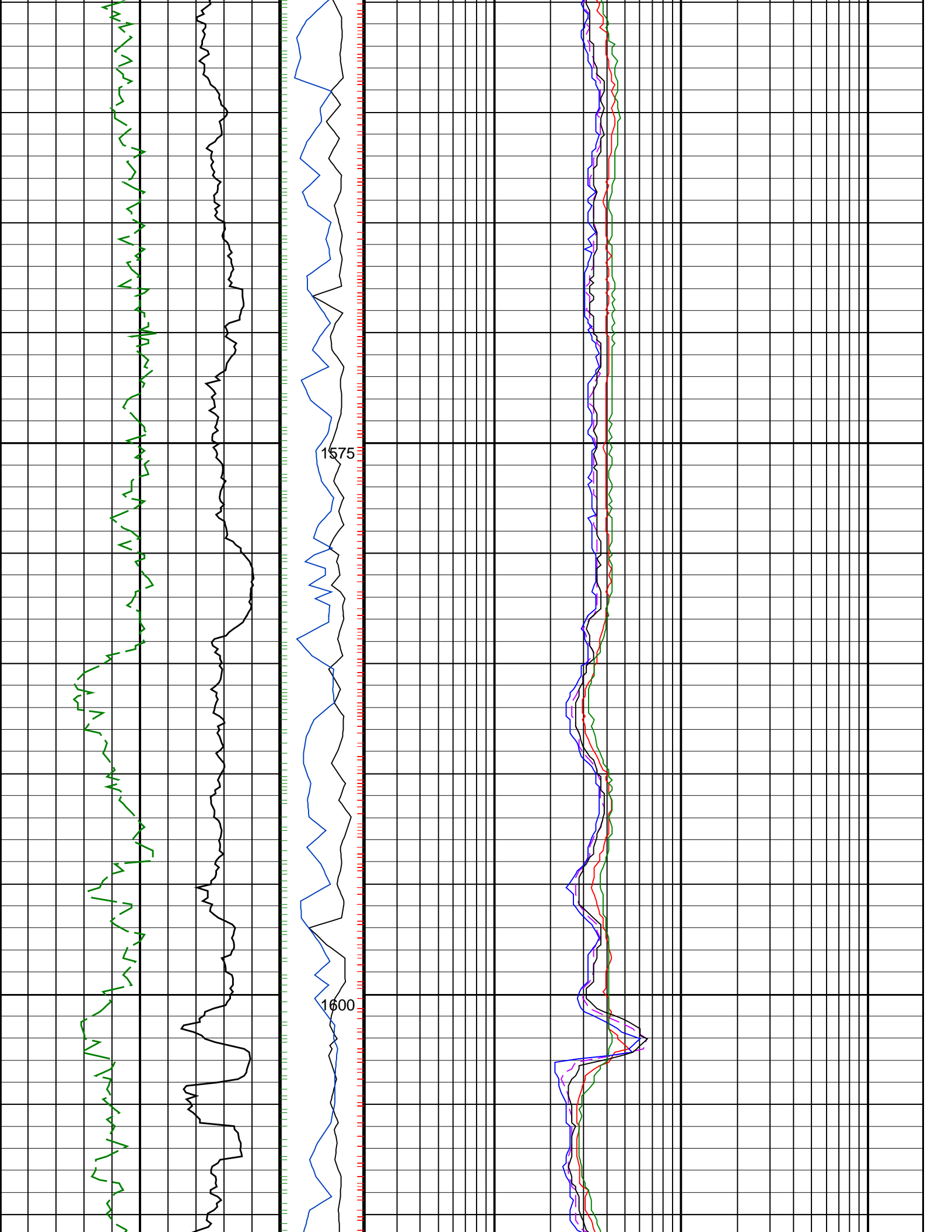


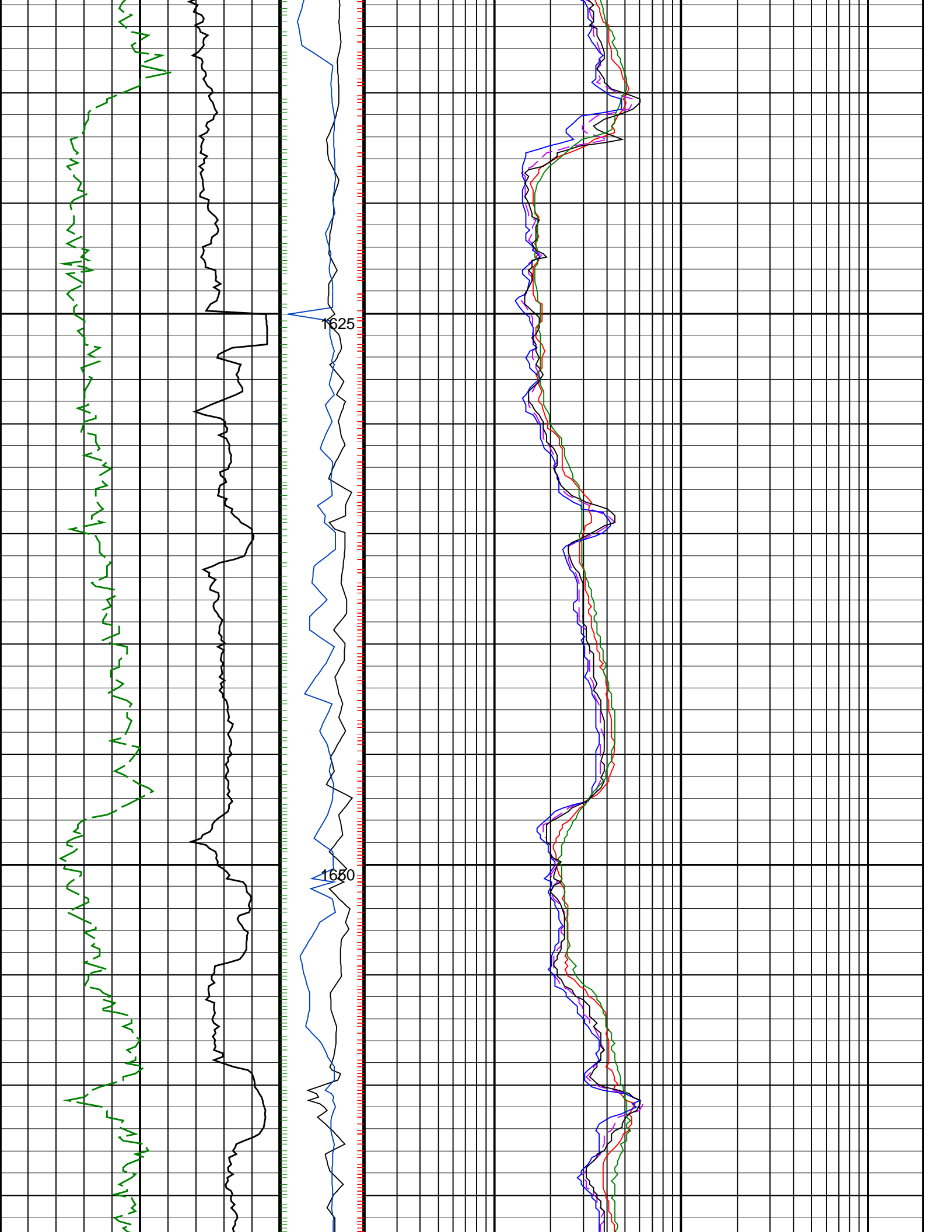


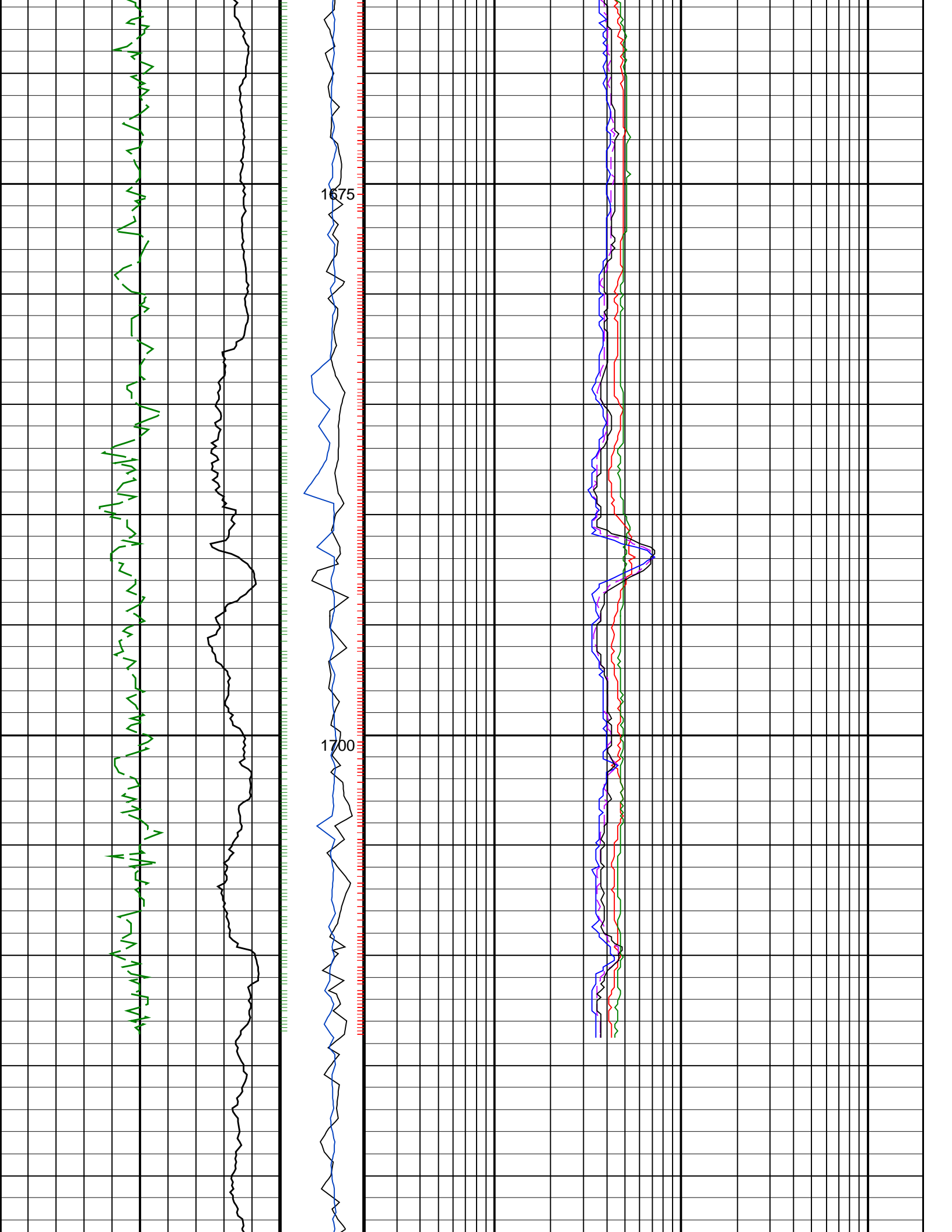












	1725	
ROP*5 (ROP5) 200 (M/HR) 0	PKPK RPM (Stick_RT) (RPM) 0 400	ARC BHCorr Attenuation Resistivity 40-in. at 2 MHz, Real-Time (A40H_RT) 0.2 (OHMM) 200
ARC Gamma Ray, Real-Time (ARC_GR_RT) (GAPI) 0 200	MWD Collar RPM (CRPM_RT) (RPM) 0 200	ARC BHCorr Phase-Shift Resistivity 28-in. at 2 MHz, Real-Time (P28H_RT) 0.2 (OHMM) 200
	ARC BHCorr Phase-Shift Resistivity 16-in. at 2 MHz, Real-Time (P16H_RT) 0.2 (OHMM) 200	
	ARC BHCorr Phase-Shift Resistivity 40-in. at 2 MHz, Real-Time (P40H_RT) 0.2 (OHMM) 200	
	ARC BHCorr Attenuation Resistivity 40-in. at 400 KHz, Real-Time (A40L_RT) 0.2 (OHMM) 200	
<p style="text-align: center;">PIP SUMMARY</p> <ul style="list-style-type: none"> ┆ ARC Gamma Ray Samples ┆ ARC Resistivity Samples ┆ IMP RP28 PIP 		