

# Henry 2DW1ST1 LWD RT 500MD

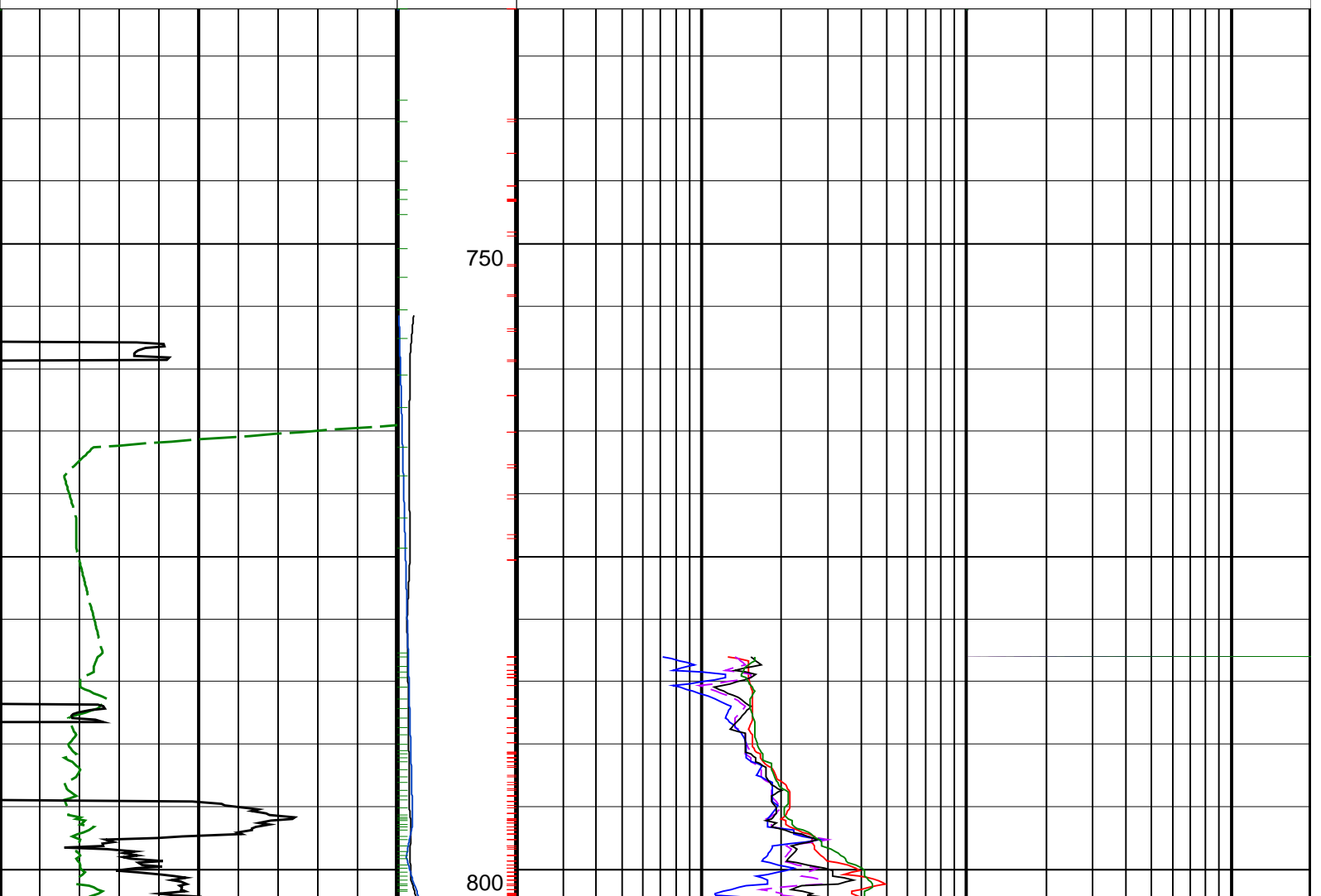
IDEAL Version: ID13\_OC\_11 <MD > Vertical Scale: 1:500

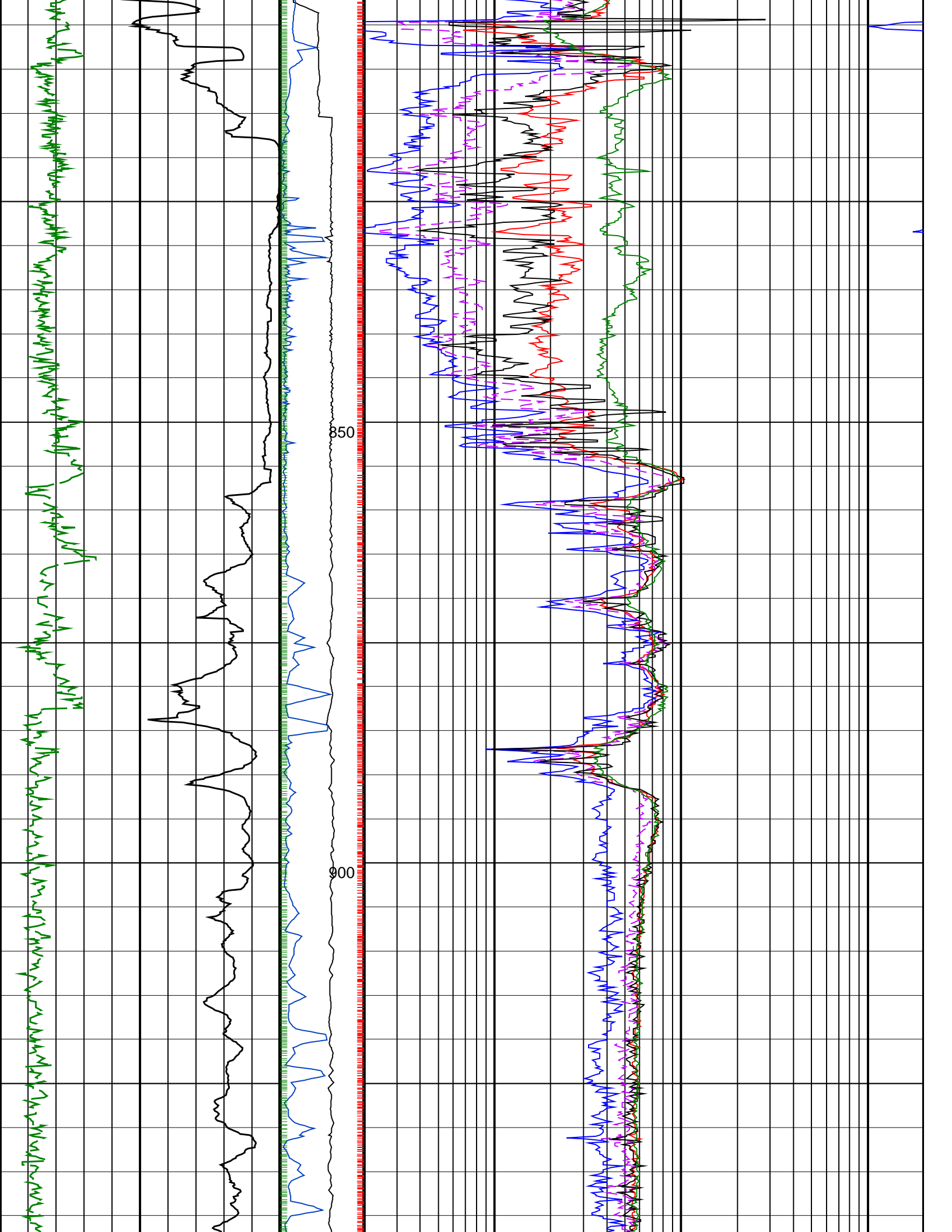
Graphics File Created: 06-Oct-2008 13:32

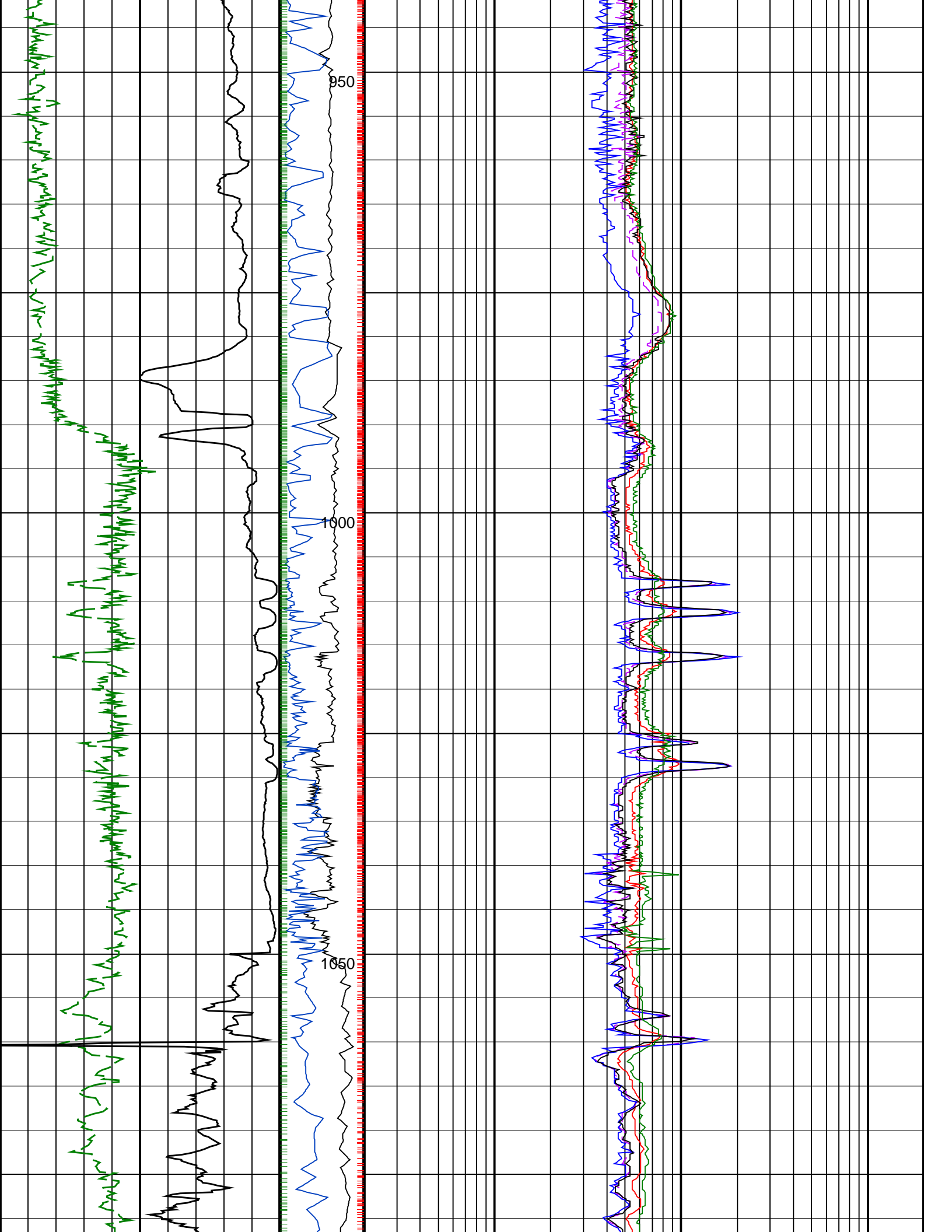
## PIP SUMMARY

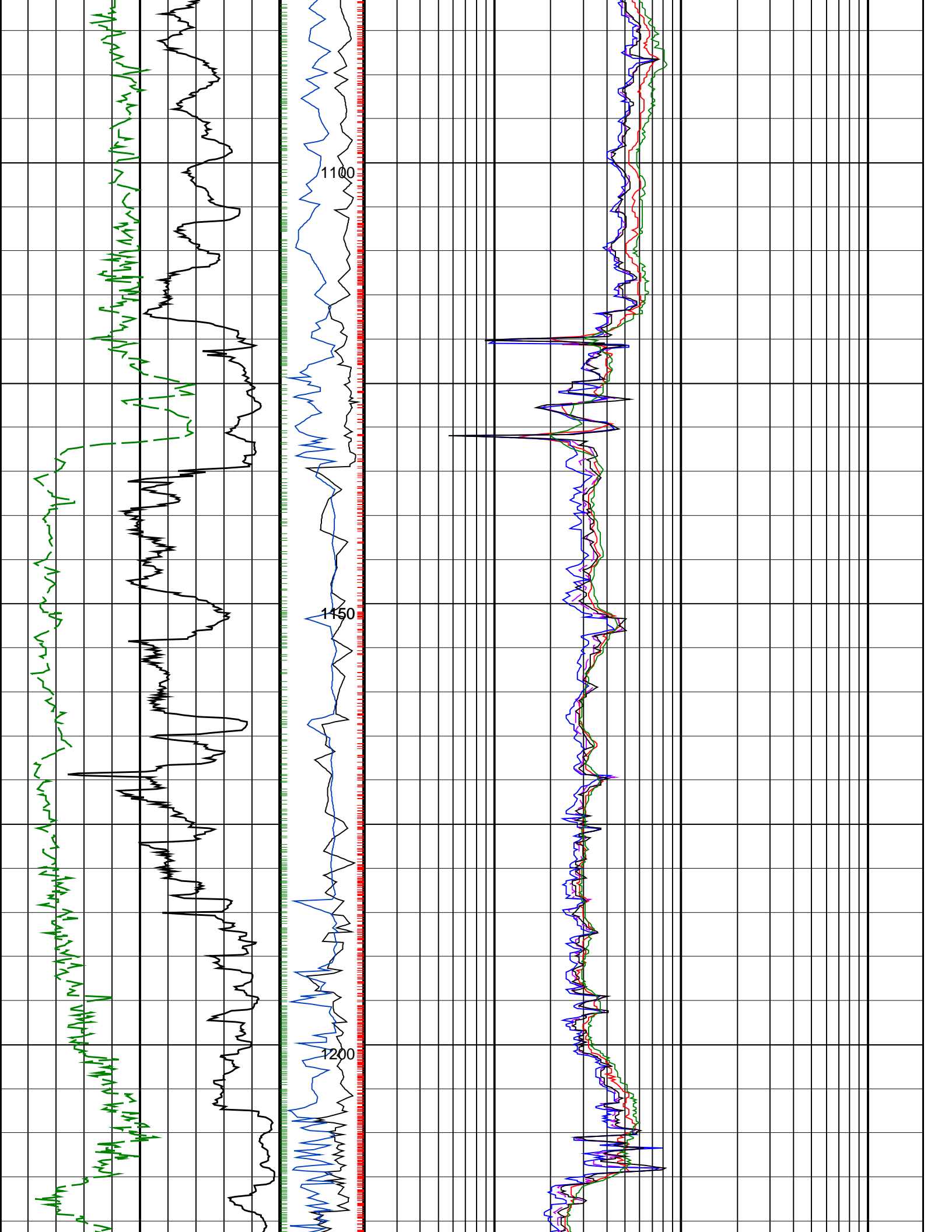
- ┆ ARC Gamma Ray Samples
- ┆ ARC Resistivity Samples
- ┆ IMP RP28 PIP

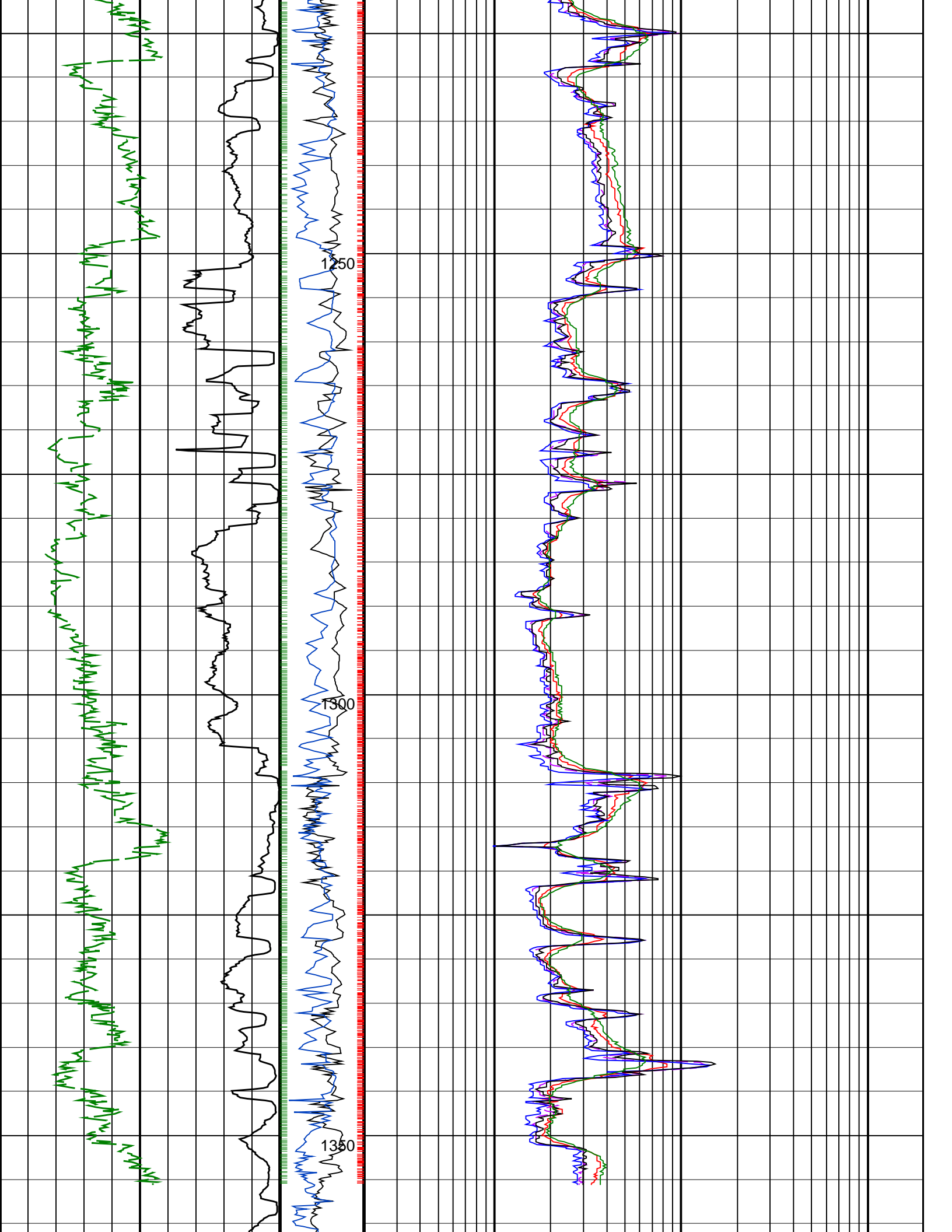
		<b>ARC BHCorr Attenuation Resistivity 40-in. at 400 KHz, Real-Time (A40L_RT)</b>
0.2	(OHMM)	200
		<b>ARC BHCorr Phase-Shift Resistivity 40-in. at 2 MHz, Real-Time (P40H_RT)</b>
0.2	(OHMM)	200
		<b>ARC BHCorr Phase-Shift Resistivity 16-in. at 2 MHz, Real-Time (P16H_RT)</b>
0.2	(OHMM)	200
<b>ARC Gamma Ray, Real-Time (ARC_GR_RT)</b>	<b>MWD Collar RPM (CRPM_RT)</b>	<b>ARC BHCorr Phase-Shift Resistivity 28-in. at 2 MHz, Real-Time (P28H_RT)</b>
0 (GAPI) 200	0 200	0.2 (OHMM) 200
<b>ROP*5 (ROP5)</b>	<b>PKPK_RPM (Stick_RT)</b>	<b>ARC BHCorr Attenuation Resistivity 40-in. at 2 MHz, Real-Time (A40H_RT)</b>
200 (M/HR) 0	0 400	0.2 (OHMM) 200












				
<b>ROP*5 (ROP5)</b>		<b>PKPK RPM</b>		
200	(M/HR)	(Stick_RT)	<b>ARC BHCorr Attenuation Resistivity 40-in. at 2 MHz, Real-Time (A40H_RT)</b>	
0		(RPM)	0.2	(OHMM) 200
		0 400		
<b>ARC Gamma Ray, Real-Time (ARC_GR_RT)</b>		<b>MWD Collar RPM</b>		
0	(GAPI)	(CRPM_RT)	<b>ARC BHCorr Phase-Shift Resistivity 28-in. at 2 MHz, Real-Time (P28H_RT)</b>	
200		(RPM)	0.2	(OHMM) 200
		0 200		
			<b>ARC BHCorr Phase-Shift Resistivity 16-in. at 2 MHz, Real-Time (P16H_RT)</b>	
			0.2	(OHMM) 200
			<b>ARC BHCorr Phase-Shift Resistivity 40-in. at 2 MHz, Real-Time (P40H_RT)</b>	
			0.2	(OHMM) 200
			<b>ARC BHCorr Attenuation Resistivity 40-in. at 400 KHz, Real-Time (A40L_RT)</b>	
			0.2	(OHMM) 200
<b>PIP SUMMARY</b>				
<ul style="list-style-type: none"> <li>├ ARC Gamma Ray Samples</li> <li>├ ARC Resistivity Samples</li> <li>├ IMP RP28 PIP</li> </ul>				