

Henry2DW1ST1 LWD RT 200TVD

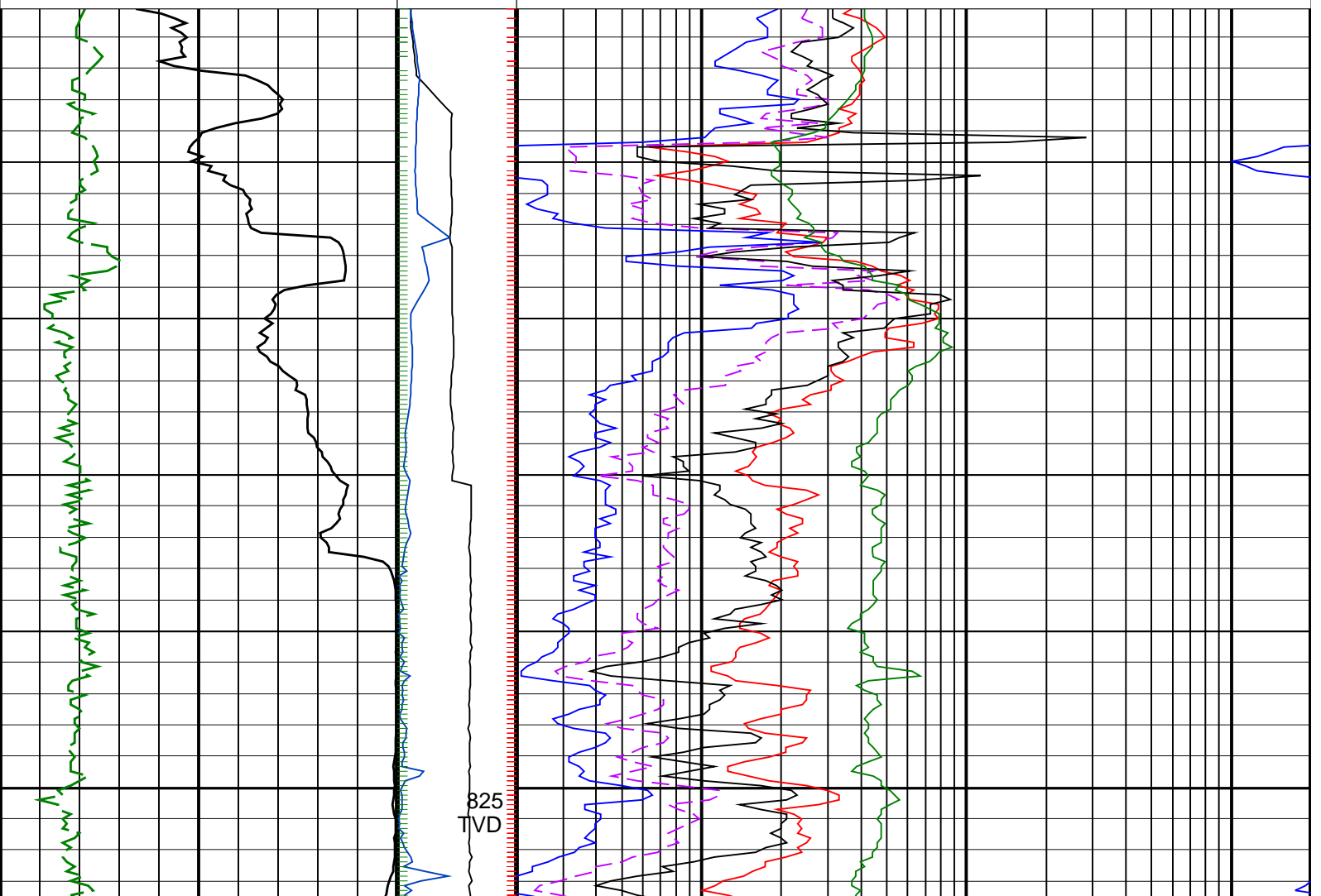
IDEAL Version: ID13_OC_11 <TVD> Vertical Scale: 1:200

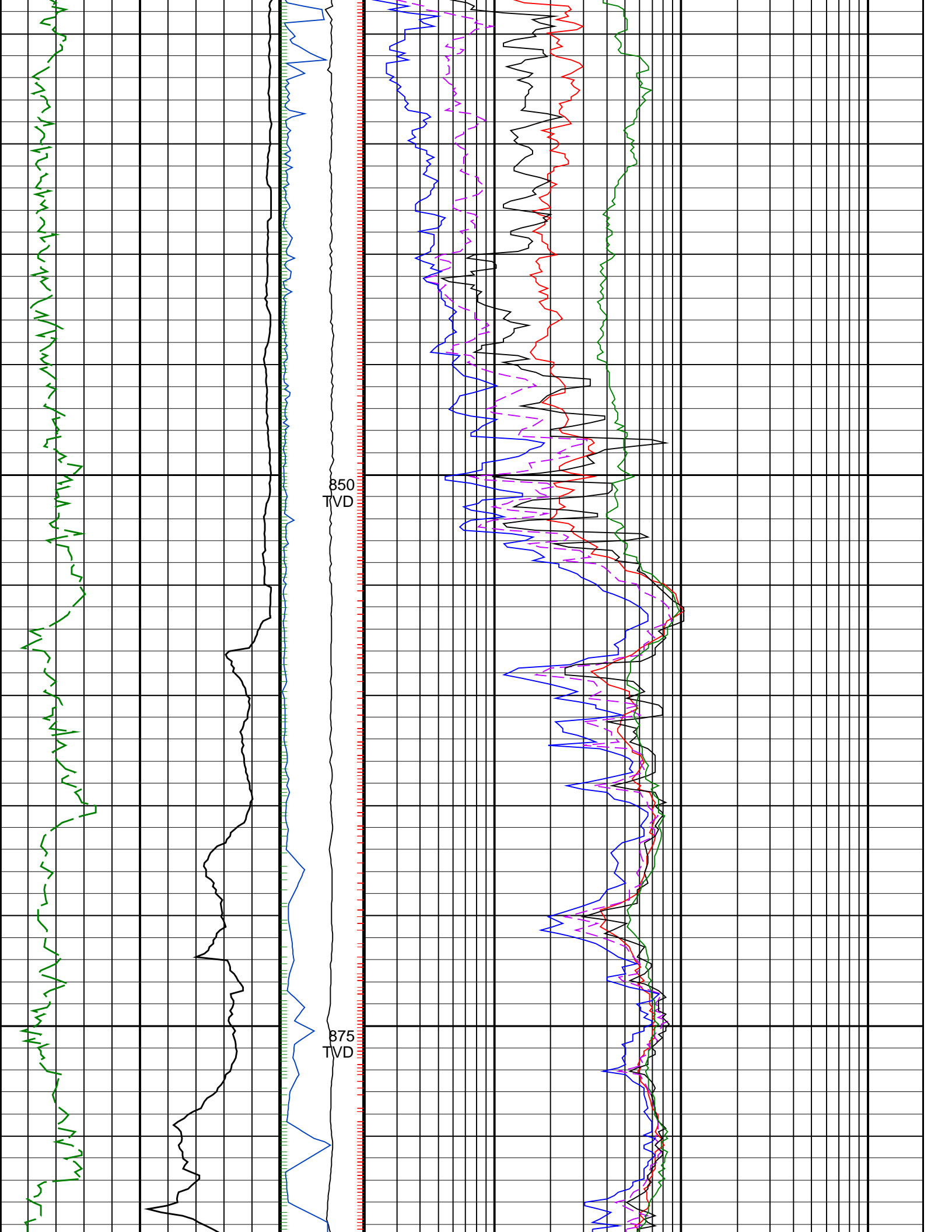
Graphics File Created: 06-Oct-2008 03:21

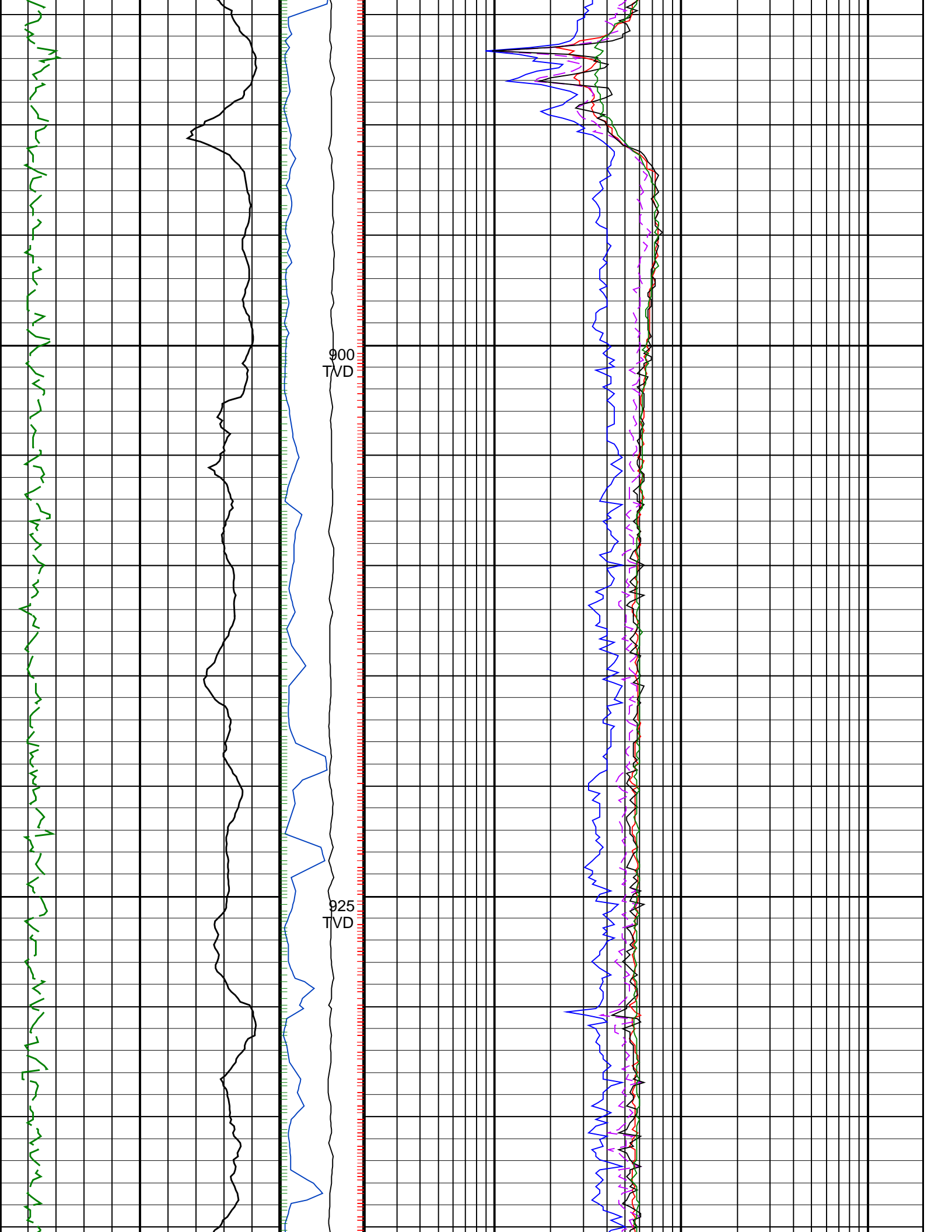
PIP SUMMARY

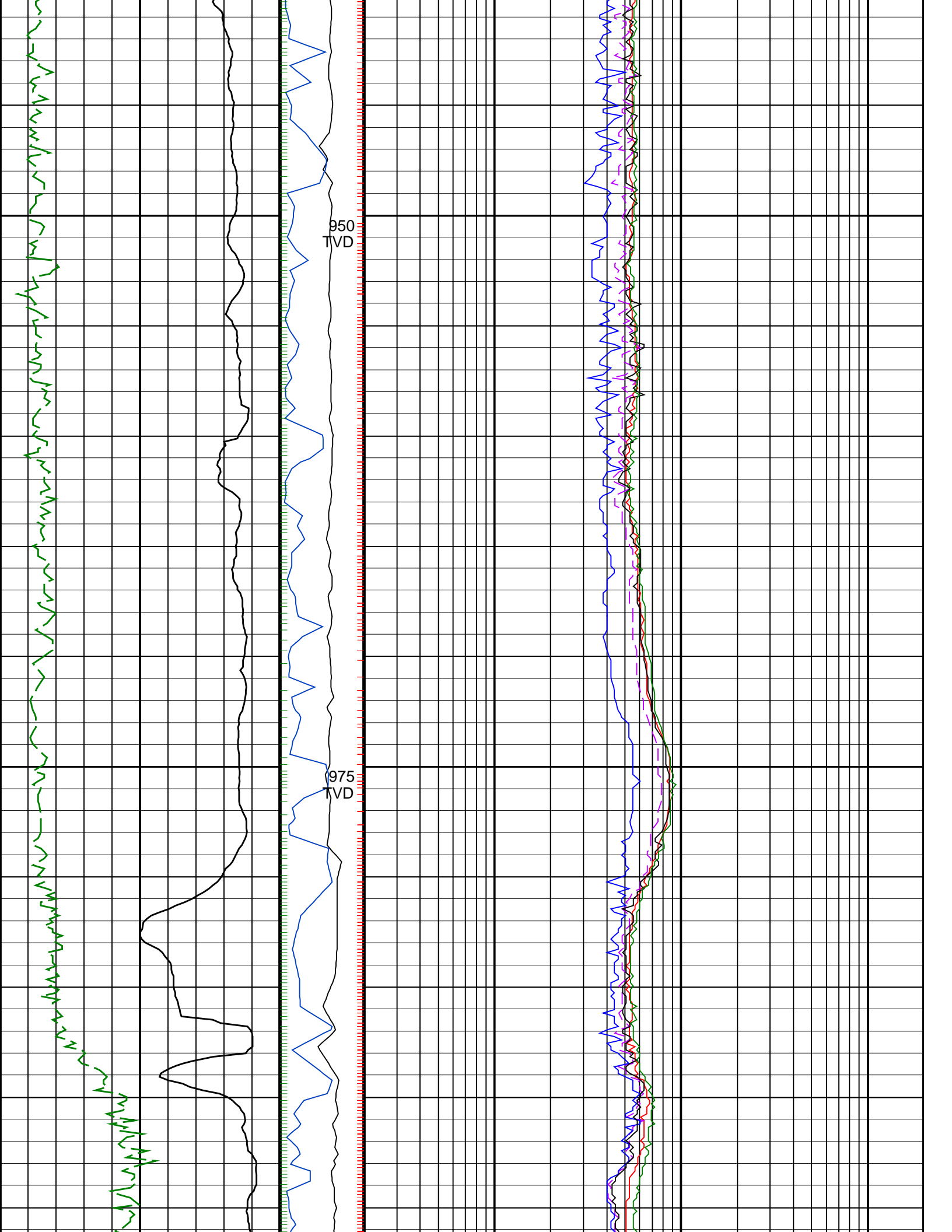
- ┆ ARC Gamma Ray Samples
- ┆ ARC Resistivity Samples
- ┆ IMP RP28 PIP

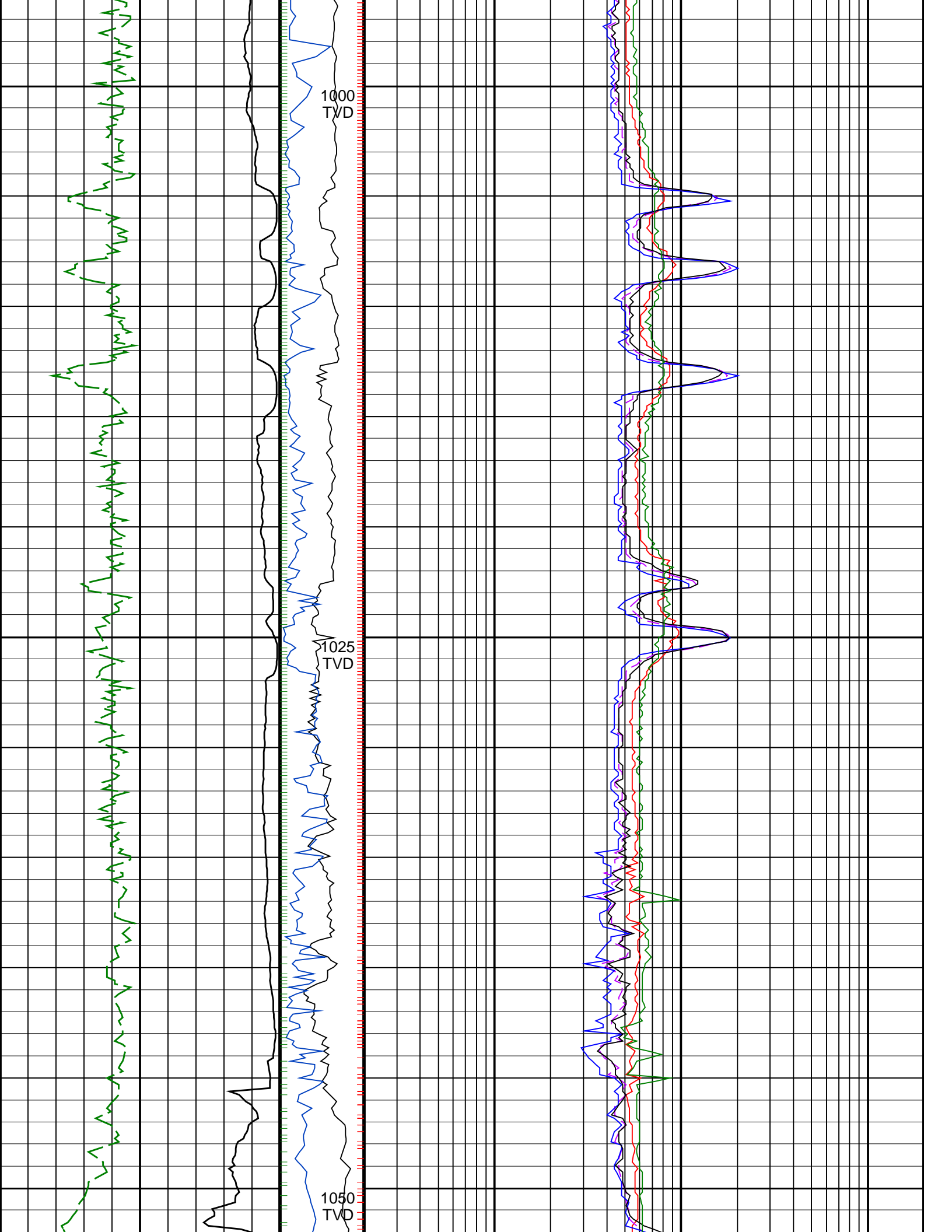
		ARC BHCorr Attenuation Resistivity 40-in. at 400 KHz, Real-Time (A40L_RT)	
0.2		(OHMM)	200
		ARC BHCorr Phase-Shift Resistivity 40-in. at 2 MHz, Real-Time (P40H_RT)	
0.2		(OHMM)	200
		ARC BHCorr Phase-Shift Resistivity 16-in. at 2 MHz, Real-Time (P16H_RT)	
0.2		(OHMM)	200
ARC Gamma Ray, Real-Time (ARC_GR_RT)	MWD Collar RPM (CRPM_RT) (RPM)	ARC BHCorr Phase-Shift Resistivity 28-in. at 2 MHz, Real-Time (P28H_RT)	
0 (GAPI) 200	0 200	0.2	(OHMM) 200
ROP*5 (ROP5) (M/HR)	PKPK_RPM (Stick_RT) (RPM)	ARC BHCorr Attenuation Resistivity 40-in. at 2 MHz, Real-Time (A40H_RT)	
200	0 400	0.2	(OHMM) 200

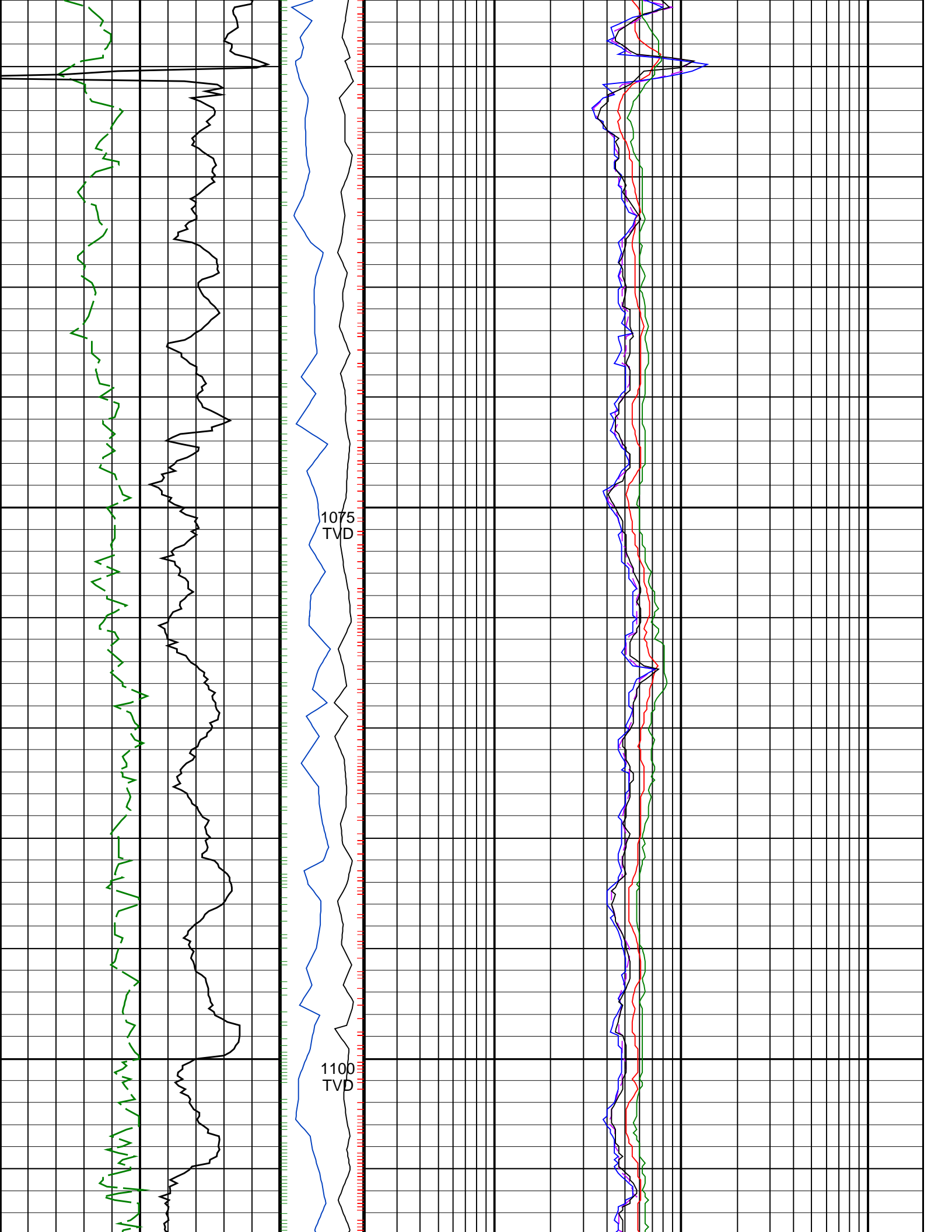


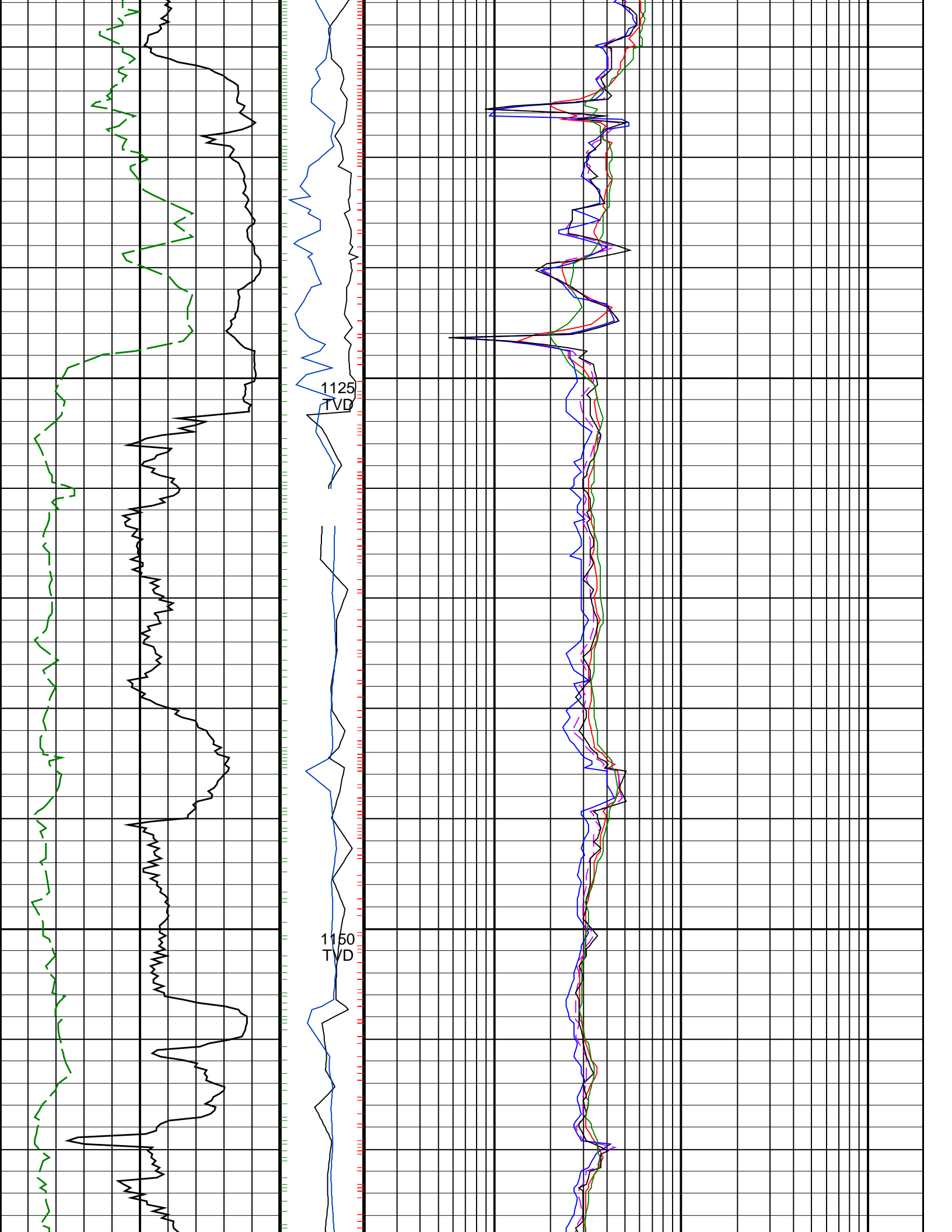


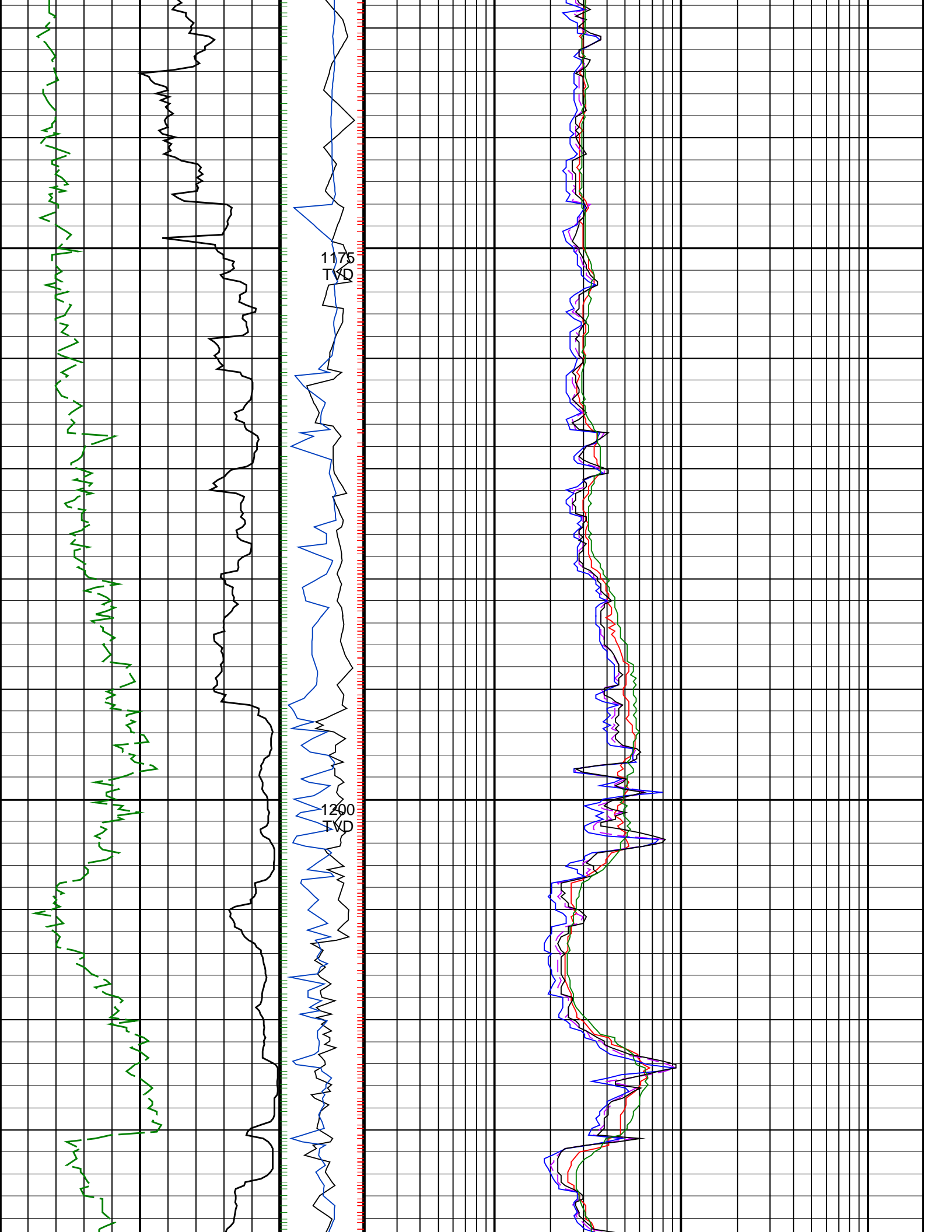


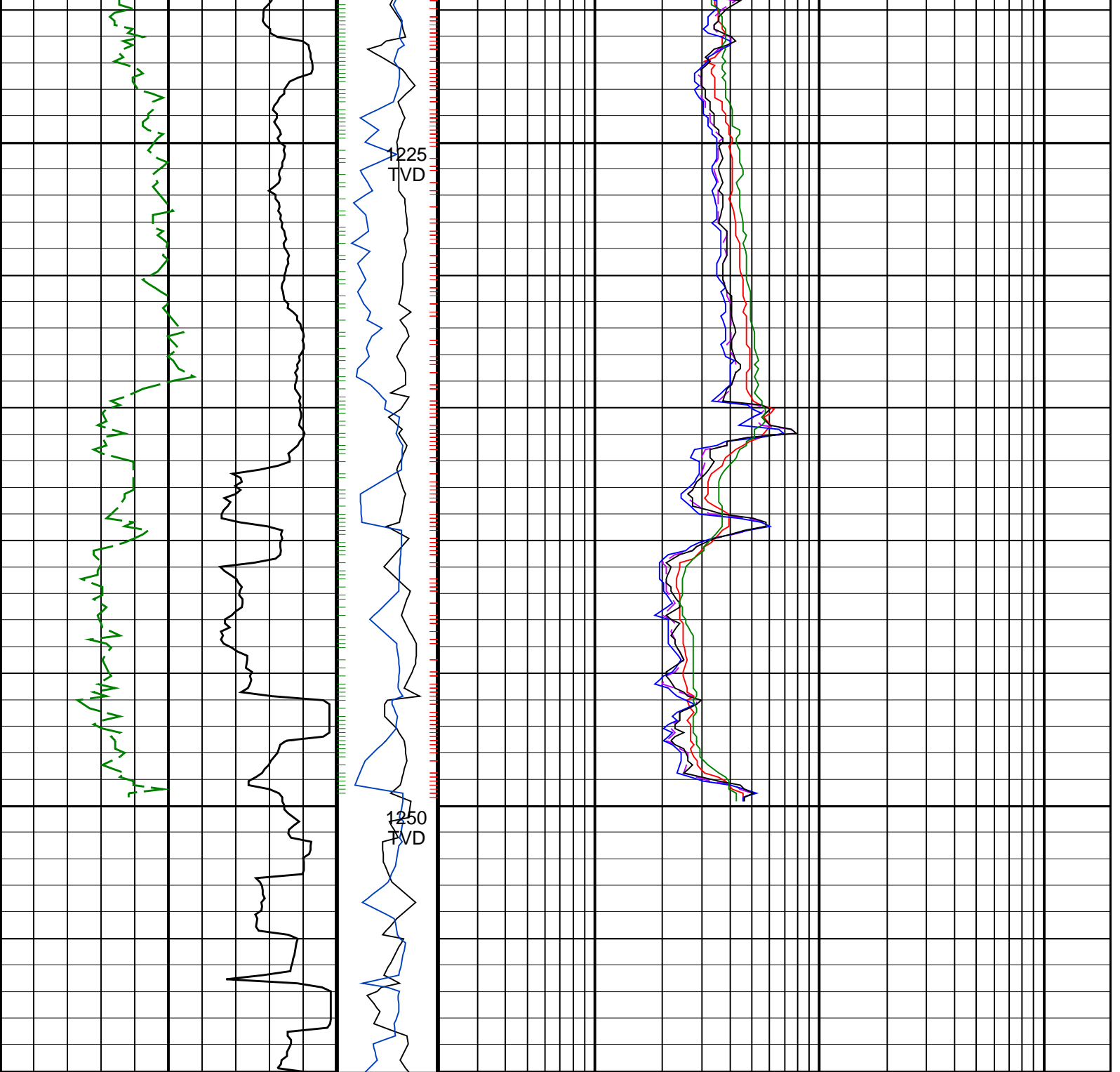












<p>ROP*5 (ROP5) (M/HR)</p> <p>200 0</p>	<p>PKPK_RPM (Stick_RT) (RPM)</p> <p>0 400</p>	<p>ARC BHCorr Attenuation Resistivity 40-in. at 2 MHz, Real-Time (A40H_RT) (OHMM)</p> <p>0.2 200</p>
<p>ARC Gamma Ray, Real-Time (ARC_GR_RT) (GAPI)</p> <p>0 200</p>	<p>MWD Collar RPM (CRPM_RT) (RPM)</p> <p>0 200</p>	<p>ARC BHCorr Phase-Shift Resistivity 28-in. at 2 MHz, Real-Time (P28H_RT) (OHMM)</p> <p>0.2 200</p>
		<p>ARC BHCorr Phase-Shift Resistivity 16-in. at 2 MHz, Real-Time (P16H_RT) (OHMM)</p> <p>0.2 200</p>
		<p>ARC BHCorr Phase-Shift Resistivity 40-in. at 2 MHz, Real-Time (P40H_RT) (OHMM)</p> <p>0.2 200</p>
		<p>ARC BHCorr Attenuation Resistivity 40-in. at 400 KHz, Real-Time (A40L_RT) (OHMM)</p> <p>0.2 200</p>

PIP SUMMARY

- + ARC Gamma Ray Samples
 - + ARC Resistivity Samples
 - + IMP RP28 PIP