

Company: Esso Australia Pty Ltd.

Well: A-5B

Field: Hailbut

Rig: Crane / Prod 4 Country: Australia

Pressure / Temperature / Spinner Survey  
Set OWEN Tubing Patch  
1 11/16" Powerspiral Perforation Record

Rig: Crane / Prod 4  
Field: Halibut  
Location: Gippsland  
Well: A-5B  
Company: Esso Australia Pty Ltd.

LOCATION			
Gippsland	Elev.:	K.B.	29.45 m
Basin		G.L.	-73.00 m
Bass Strait		D.F.	29.45 m
Permanent Datum:	M.S.L.		
Log Measured From:	K.B.	29.45 m	above Perm. Datum
Drilling Measured From:	K.B.		

State: Victoria	Max. Well Deviation 42 deg	Longitude 148°19' 07.62"E	Latitude 38°24' 20.36"S
-----------------	-------------------------------	------------------------------	----------------------------

Logging Date 27-Dec-2008

Run Number One

Depth Driller 2968 m

Schlumberger Depth 2936 m

Bottom Log Interval 2936 m

Top Log Interval 2815 m

Casing Fluid Type Production Fluids

Salinity

Density

Fluid Level 975 m

BIT/CASING/TUBING STRING

Bit Size 8.500 in

From 567 m

To 3004 m

Casing/Tubing Size 2.875 in

Weight 6.4 lbn/ft

Grade 13CR-80

From 12.37 m

To 2965 m

Maximum Recorded Temperatures 223 degF

Logger On Bottom 27-Dec-2008 7:25

Unit Number 889 Location Prod 4 / AU5L

Recorded By S Gilbert

Witnessed By D Madden

Run 1

Oil Density  
Water Salinity  
Gas Gravity

Bo

Bw

1/Bg

Bubble Point Pressure

Bubble Point Temperature

Solution GOR

Maximum Deviation

CEMENTING DATA

Primary/Squeeze

Casing String No

Lead Cement Type

Volume

Density

Water Loss

Additives

Tail Cement Type

Volume

Density

Water Loss

Additives

Expected Cement Top

Logging Date

Run Number

Depth Driller

Schlumberger Depth

Bottom Log Interval

Top Log Interval

Casing Fluid Type

Salinity

Density

Fluid Level

BIT/CASING/TUBING STRING

Bit Size

From

To

Casing/Tubing Size

Weight

Grade

From

To

Maximum Recorded Temperatures

Logger On Bottom 27-Dec-2008 7:25

Unit Number 889 Location Prod 4 / AU5L

Recorded By S Gilbert

Witnessed By D Madden

## DEPTH SUMMARY LISTING

Date Created: 23-DEC-2008 7:10:01

### Depth System Equipment

Depth Measuring Device	Tension Device	Logging Cable
Type: IDW-EB Serial Number: 6373 Calibration Date: 2-Dec-2008 Calibrator Serial Number: 30 Calibration Cable Type: 2-32ZT Wheel Correction 1: -1 Wheel Correction 2: -2	Type: PSDS/OSDS Serial Number: 325337 Calibration Date: 11-Dec-2008 Calibrator Serial Number: 1174 Number of Calibration Points: 9 Calibration RMS: 16 Calibration Peak Error: 27	Type: 2-32ZT Serial Number: 207308 Length: 6400 M Conveyance Method: Wireline Rig Type: Offshore Fixed

### Depth Control Parameters

Log Sequence:	Subsequent Log In the Well
Reference Log Name:	Solar Composite Log
Reference Log Run Number:	
Reference Log Date:	dd-Mmm-yyyy

### Depth Control Remarks

1. IDW-EB 6373 Used as primary depth control .
2. Z-Chart used as Backup .
3. Log correlated on depth over Zone of interest .
4.
5.
6.

#### DISCLAIMER

THE USE OF AND RELIANCE UPON THIS RECORDED-DATA BY THE HEREIN NAMED COMPANY (AND ANY OF ITS AFFILIATES, PARTNERS, REPRESENTATIVES, AGENTS, CONSULTANTS AND EMPLOYEES) IS SUBJECT TO THE TERMS AND CONDITIONS AGREED UPON BETWEEN SCHLUMBERGER AND THE COMPANY, INCLUDING: (a) RESTRICTIONS ON USE OF THE RECORDED-DATA; (b) DISCLAIMERS AND WAIVERS OF WARRANTIES AND REPRESENTATIONS REGARDING COMPANY'S USE OF AND RELIANCE UPON THE RECORDED-DATA; AND (c) CUSTOMER'S FULL AND SOLE RESPONSIBILITY FOR ANY INFERENCE DRAWN OR DECISION MADE IN CONNECTION WITH THE USE OF THIS RECORDED-DATA.

OTHER SERVICES1
OS1: None
OS2:
OS3:
OS4:
OS5:

REMARKS: RUN NUMBER 1
Log correlated to Solar Composite log supplied with logging program.
Maximum well deviation = 42 deg @ 1119m MDKB.
Objectives: Conduct Static and Flowing Spinner Survey between the Packers @ 2855m and 2816m MDKB to determine the exact location of suspected hole's in the Blast Joints . Run Drift for OWEN Tubing Patch . Set OWEN Tubing Patch .
Perforate the Well over the interval 2935m to 2936m MDKB using a 1m 1 11/16" PowerSpiral Gun .
HUD: not tagged with Logging tools

Schlumberger Crew: J Light , C Shiells , J Annear

**STOP**

RUN 2

MWPM-AA

## DOWNHOLE EQUIPMENT

12.39

11.70

11.01

10.33

9.64

8.96

8.63

— 2.41

7.55

CCL  
SMWP Pres  
SMWP Temp  
Tension

\_\_\_ TOOL ZERO

Detail M I  
TelStatus  
CTEM

PSPT-B 827

PSC-A 827

PSPT-B 827

PSTC 827

PBMS-B 827

CQG\_F\_Mano 827

RTD\_Thermometer 827

GR 827

CCL 827

PBMS 827

GR

Well\_Temp

CQG Manom

CCL

PBMS PSTC

PILS-A 839

PILS-A 839

Spinner

PFCS-A 796

Turbine 796

Holdup Probes 796

Relative Bearing 796

Caliper 796

PFCC-A 796

PFCH-A 796

PFCS Spin

PFCS Cali

PFCS Prob

PFCS Wave HV

PFCS Rela

PFCS Cart

Tension

TOOL ZERO

MAXIMUM STRING DIAMETER 1.69 IN  
MEASUREMENTS RELATIVE TO TOOL ZERO  
ALL LENGTHS IN METERS

4.86

2.34

1.57

AH-Flex Joint 42

AH-Flex Joint 42

SAH-G 1035

SAH-G 1035

MPD-. 336

MPD-. 336

AH-ESIC 4007395

AH-ESIC 4007395

AH-Firing Head 1

MWP\_GUN

GUN-1 11/16" PowerSpiral Gun 1

4.73

4.27

3.94

3.40

2.97

2.74

TOOL BOTTOM

MAXIMUM STRING DIAMETER 2.00 IN  
MEASUREMENTS RELATIVE TO TOOL ZERO  
ALL LENGTHS IN METERS

Production String

(in)

(m)

OD

ID

MD

Well Schematic

(m)

(in)

MD

OD

ID

Casing String

Building Gate

Tubing

8.875

2.950

12.0

2.875

12.1

SSSV

2.875

143.2

Mandrel - Side Pocket

2.875

718.5

Mandrel - Side Pocket

2.875

1062.6

Mandrel - Side Pocket

2.875

1598.8

Mandrel - Side Pocket

2.875

1894.9

Crossover Joint

Packer

Crossover Joint

3.900

2.875

2812.8

7.000

2.875

2815.9

3.900

2.875

2820.2

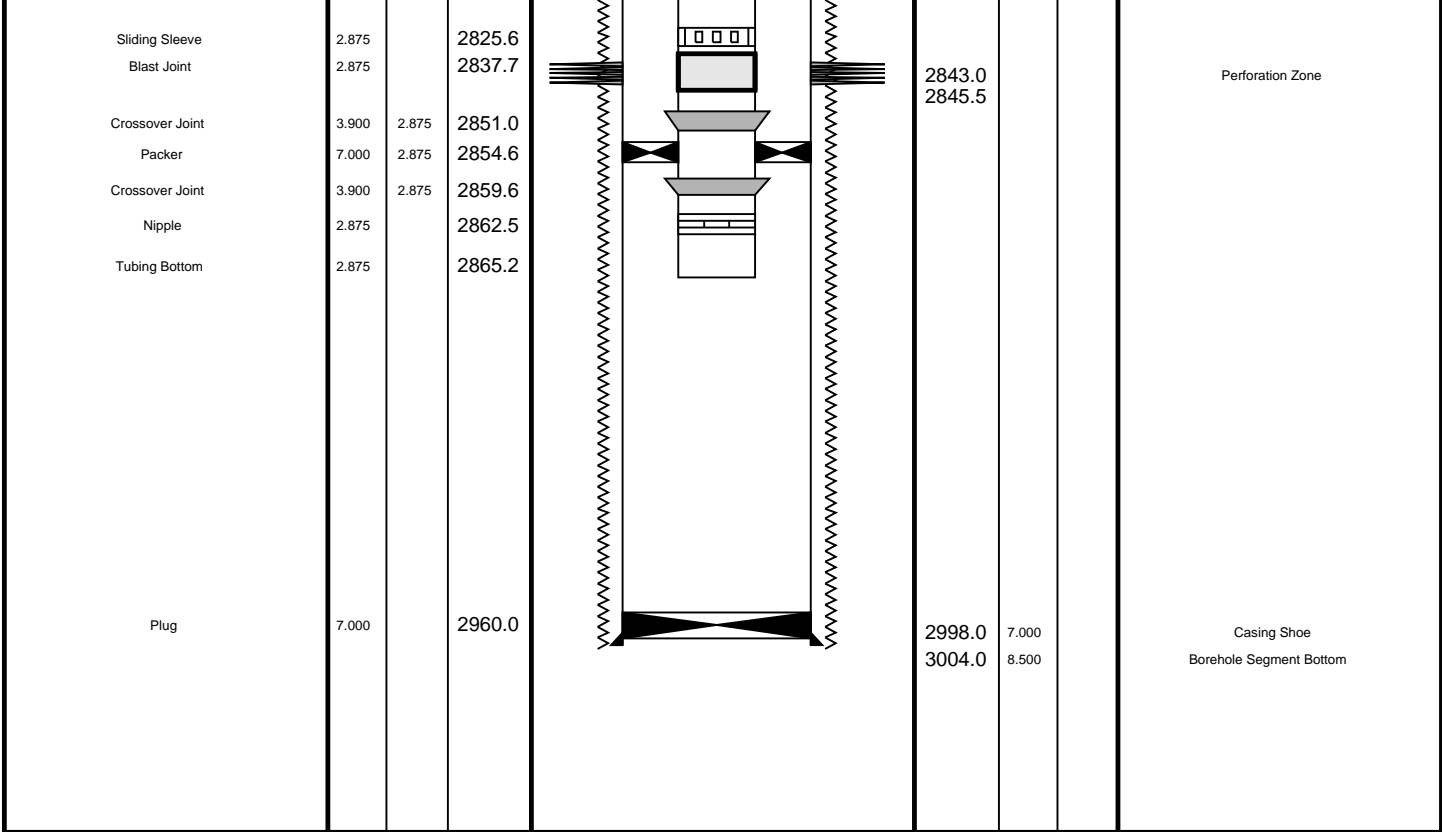
Casing String

Casing String

Liner Hanger

Casing Shoe

Borehole Segment



# Job Events Summary

MAXIS Field Log

## Schlumberger Job Event Summary

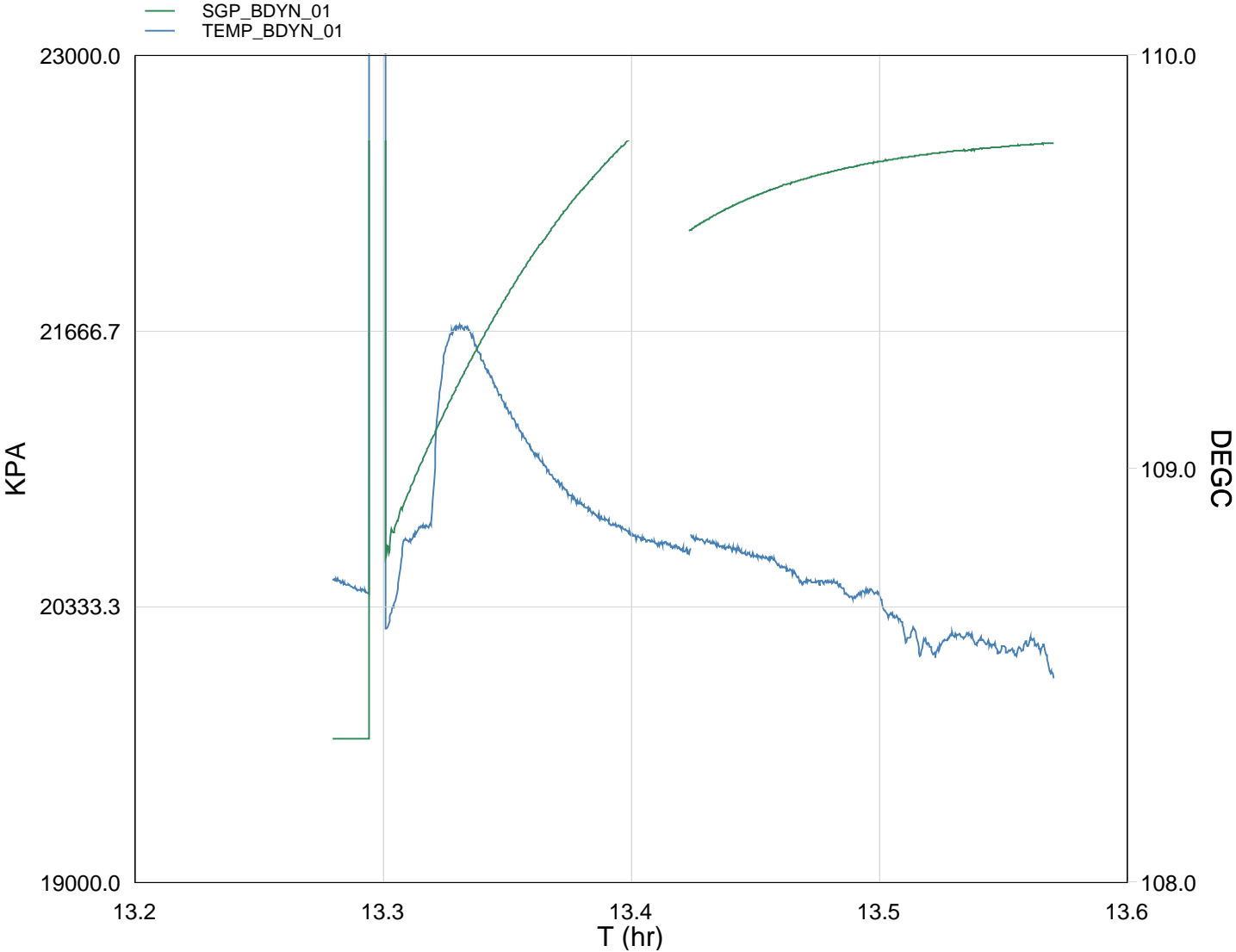
Time	Elapsed Time	Depth (M)	File
------	--------------	-----------	------

Log Pass (up)	27-Dec-2008 12:06	000:09	2880.1 - 2790.7	FCS_ILS_PSP_017LUP
Station Log	27-Dec-2008 12:26	000:29	2889.9	FCS_ILS_PSP_020LTP
Log Pass (up)	27-Dec-2008 12:56	000:11	2898.5 - 2792.7	FCS_ILS_PSP_022LUP
Log Pass (up)	27-Dec-2008 16:30	000:11	2855.1 - 2780.1	PERFO_032LUP
Log Pass (up)	28-Dec-2008 8:36	000:05	2831.0 - 2797.1	PERFO_041LUP
Log Pass (up)	28-Dec-2008 8:43	000:21	2847.4 - 2796.2	PERFO_042LUP
Log Pass (up)	29-Dec-2008 9:13	000:06	2955.2 - 2913.9	PERFO_053LUP
Log Pass (up)	29-Dec-2008 13:09	000:30	2955.2 - 2891.2	PERFO_057LUP
Station Log	29-Dec-2008 13:16	000:18	2930.8	PERFO_058LTP



GUN # 1 Fired @  
2935m to 2936m MDKB

MAXIS Field Log



TIME	KPA	PSIA	DEGF
18150.0	19686.6986	2855.3183	227.6318
18180.0	19695.2715	2856.5618	227.6902
18210.0	-999999.9999	2856.4934	227.6568
18240.0	19940.9805	2892.1988	227.6030
18270.0	20228.0927	2933.8408	227.9488
18300.0	20456.2790	2966.9364	228.0267
18330.0	20667.5744	2997.5822	228.8484

18330.0	20867.5744	2997.5822	228.8494
18360.0	20863.1965	3025.9549	228.8356
18390.0	21045.5255	3052.3995	228.6428
18420.0	21213.5957	3076.7760	228.4792
18450.0	21369.0334	3099.3204	228.3233
18480.0	21507.8366	3119.4519	228.2185
18510.0	21637.6961	3138.2864	228.1239
18540.0	21750.0680	3154.5847	228.0571
18570.0	21858.6466	3170.3326	228.0045
18600.0	21955.7431	3184.4154	227.9718
18630.0	22042.6306	3197.0173	227.9358
18660.0	22117.9316	3207.9388	227.9199
18690.0	22185.0412	3217.6723	227.8912
18720.0	22242.6464	3226.0270	227.8641
18750.0	22291.4297	3233.1025	227.8479
18780.0	22333.3472	3239.1821	227.8186
18810.0	22371.3275	3244.6908	227.7765
18840.0	22401.3964	3249.0519	227.7082
18870.0	22429.3306	3253.1034	227.7146
18900.0	22453.4828	3256.6063	227.6596
18930.0	22474.4164	3259.6426	227.6621
18960.0	22492.7808	3262.3062	227.5713
18990.0	22508.8520	3264.6370	227.4462
19020.0	22521.6082	3266.4871	227.4409
19050.0	22534.4706	3268.3527	227.4605
19080.0	22543.7745	3269.7021	227.4764
19110.0	22553.8036	3271.1567	227.4344
19140.0	22562.1895	3272.3730	227.4116
19170.0	22569.1515	3273.3828	227.4650
19200.0	22575.9926	3274.3749	227.3221

Schlumberger

Gun Shooting Pass

MAXIS Field Log

Company: Esso Australia Pty Ltd. Well: A-5B

Output DLIS Files

DEFAULT PERFO\_057LUP FN:55 PRODUCER 29-Dec-2008 13:09 2955.2 M 2891.2 M

OP System Version: 16C0-147  
MCM

MWP\_GUN 16C0-147 MWPT-CA 16C0-147  
MWGT-AA 16C0-147

PIP SUMMARY

Time Mark Every 60 S

Pressure (SGP)  
(PSIA)

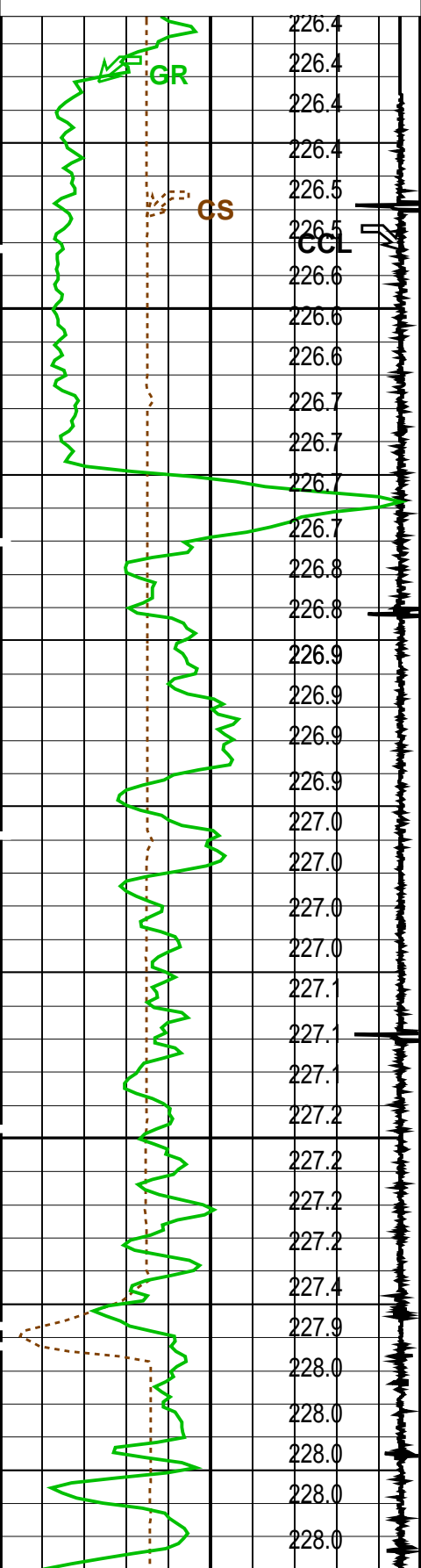
Temperature  
(TEMP\_MWPT)  
(DEGF)

Tension (TENS)  
(LBF)

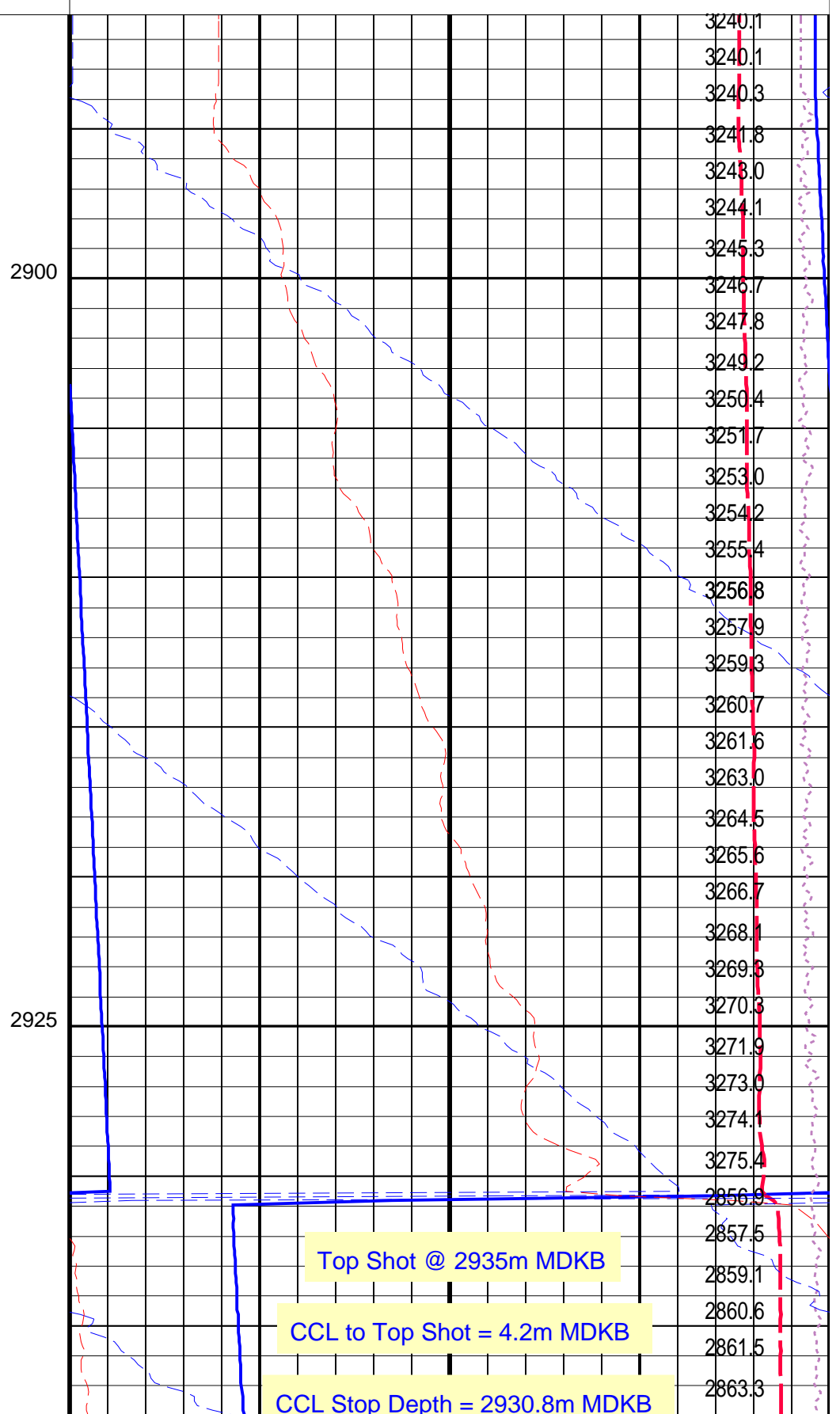
0 2000

Temperature (TEMP\_MWPT)

CCL		
From CCL to T1		
Gamma Ray (GR)		
(GAPI)		
0		150
Casing Collar Locator (CCL)		
(-19) (----) 1		
Cable Speed (CS)		
(F/HR)		
0		5000



Temperature (TEMP_MWPT)		
(DEGF)		
0		2
Strain Gauge Pressure (SGP)		
(PSIA)		
0		20
Temperature (TEMP_MWPT)		
(DEGF)		
200		230
Strain Gauge Pressure (SGP)		
(PSIA)		
2750		3250







Company: Esso Australia Pty Ltd.

Well: A-5B

Output DLIS Files

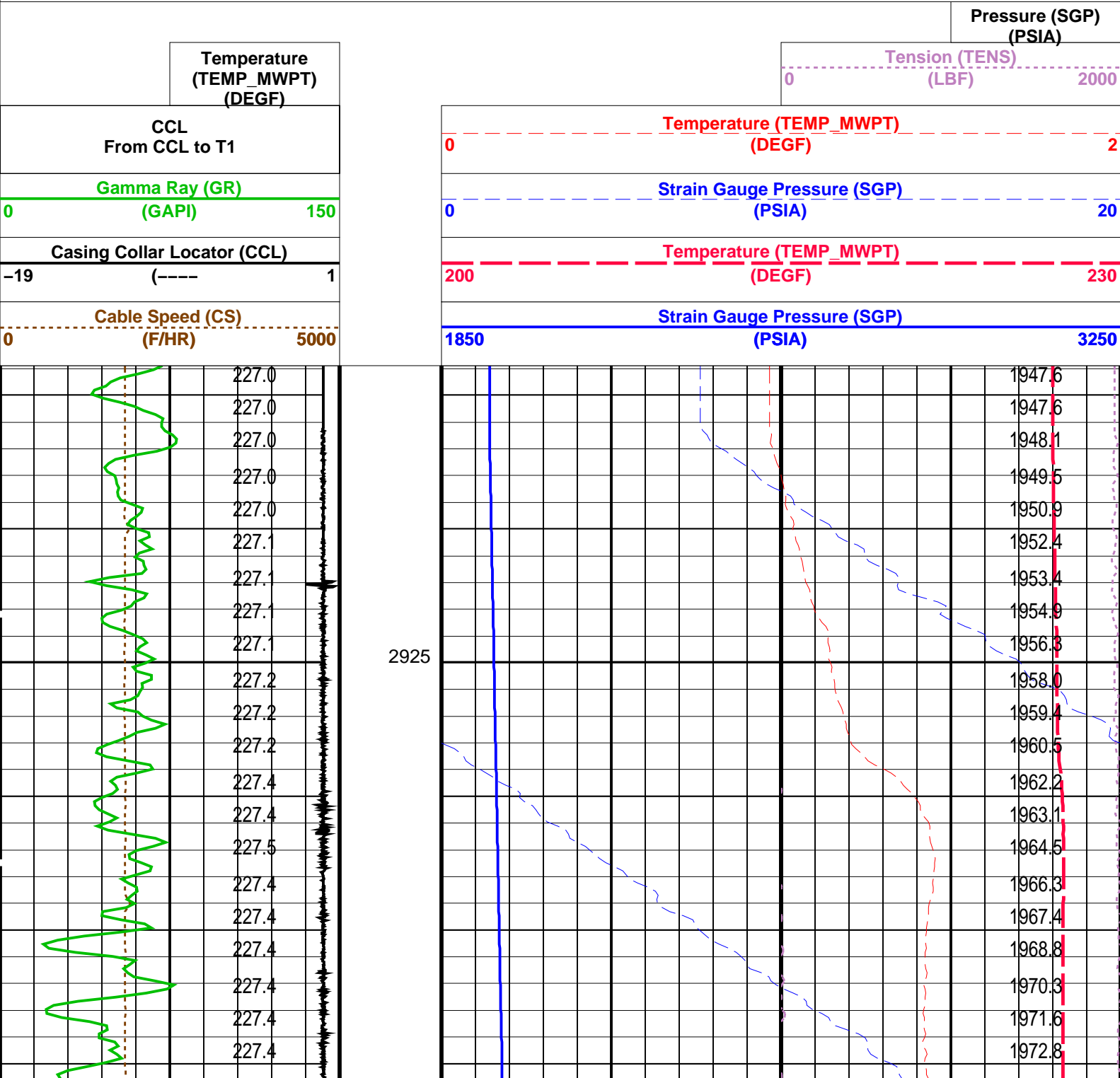
DEFAULT      PERFO\_053LUP      FN:51    PRODUCER    29-Dec-2008 09:13    2955.2 M    2913.9 M

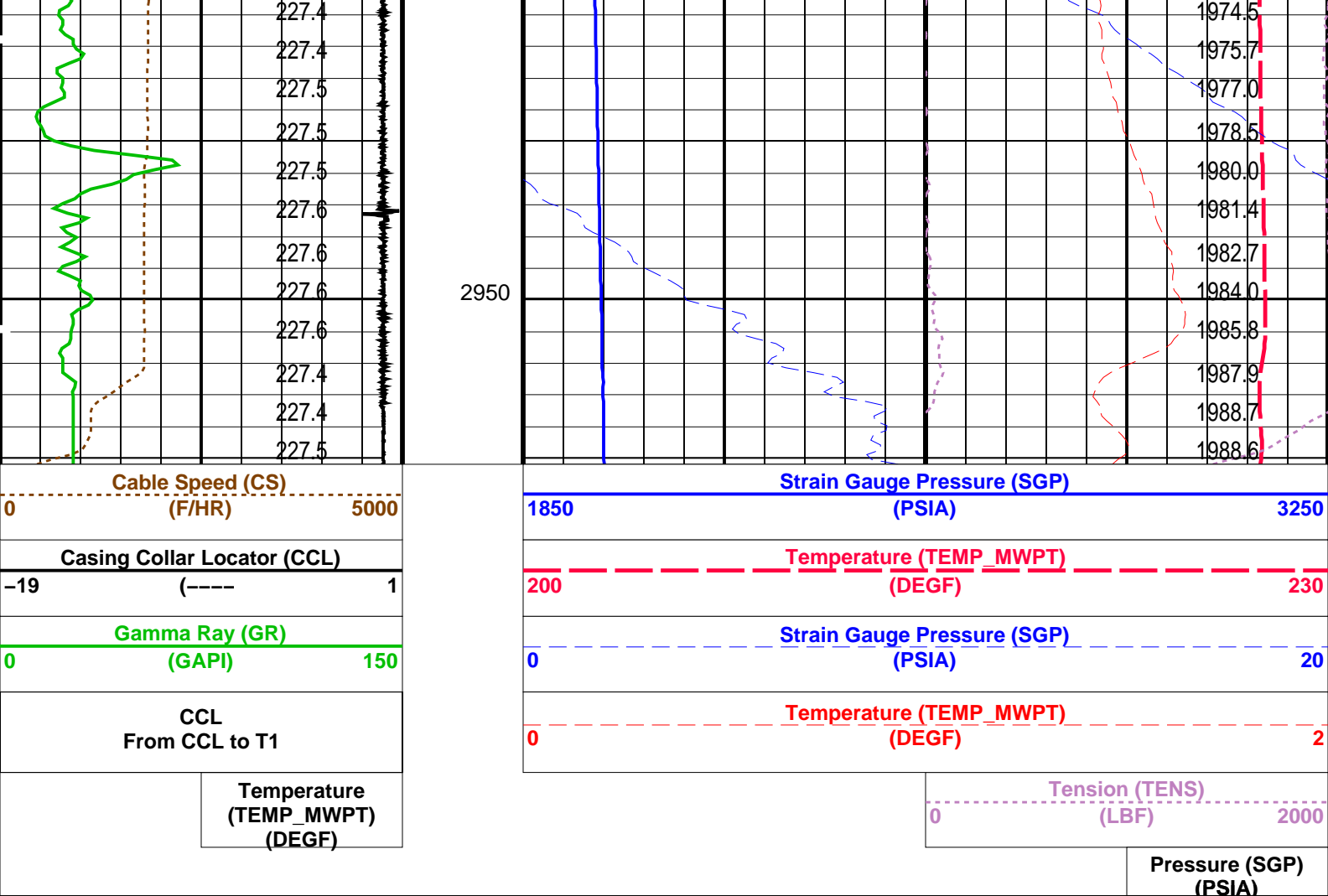
OP System Version: 16C0-147  
MCM

MWP\_GUN      16C0-147      MWPT-CA      16C0-147  
MWGT-AA      16C0-147

PIP SUMMARY

Time Mark Every 60 S





#### PIP SUMMARY

Time Mark Every 60 S

### Parameters

DLIS Name	Description	Value
MWPT-CA: MEASUREMENT WHILE PERFORATING TOOL		
DEVI_FL_CORR	Deviation Angle for Flow Line Correction	0 DEG
FLD	Flow Line Density	1 G/C3
MWPT_NULL_SOURCE	MWPT NULL Temperature Source	TEMS
MWPT_NULL_TEMP	MWPT NULL Temperature	0.0 DEGC

Format: MWP Vertical Scale: 1:200

Graphics File Created: 29-Dec-2008 09:13

### OP System Version: 16C0-147

MCM

MWP_GUN	16C0-147	MWPT-CA	16C0-147
MWGT-AA	16C0-147		

### Output DLIS Files

DEFAULT	PERFO_053LUP	FN:51	PRODUCER	29-Dec-2008 09:13
---------	--------------	-------	----------	-------------------

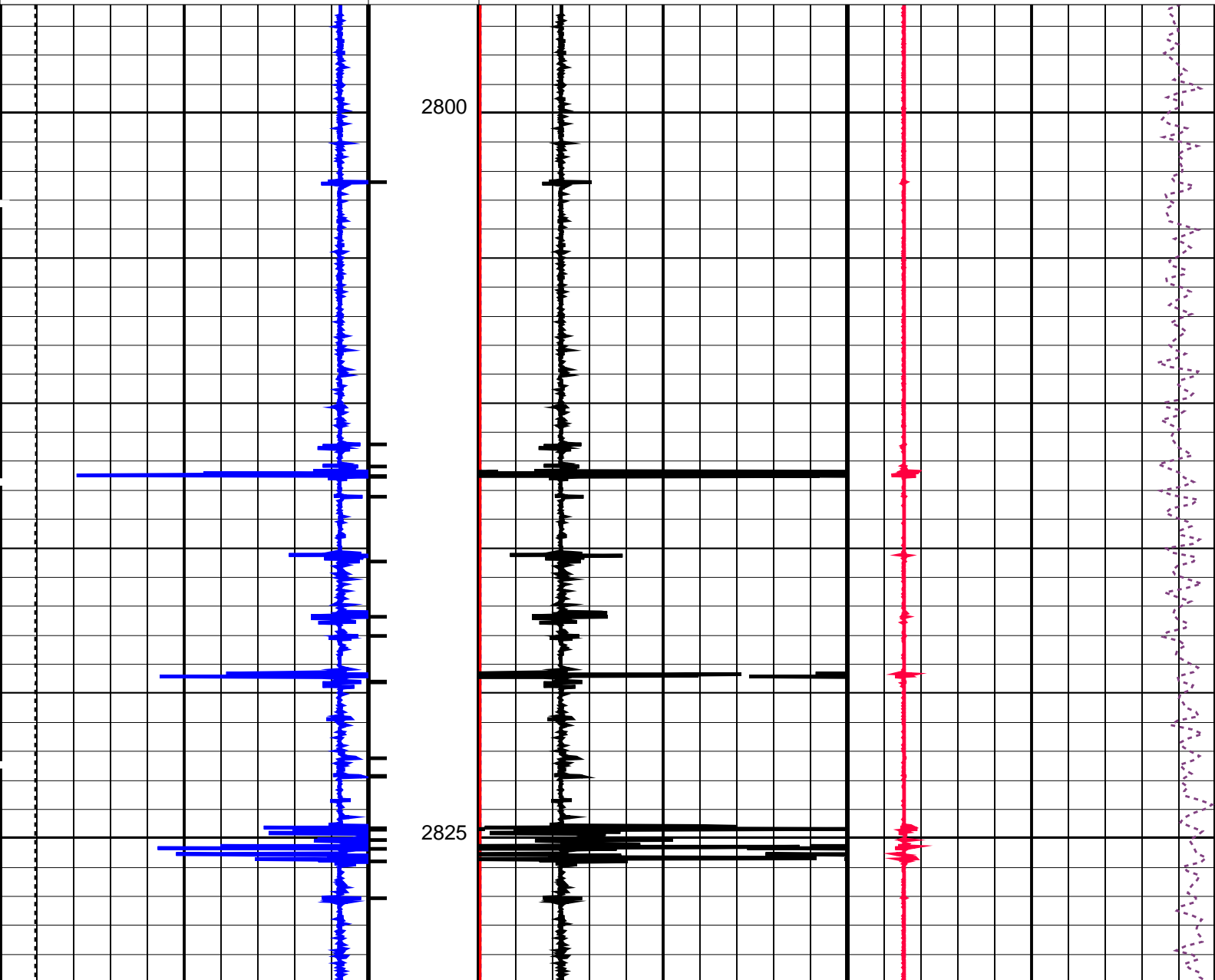
**Schlumberger**

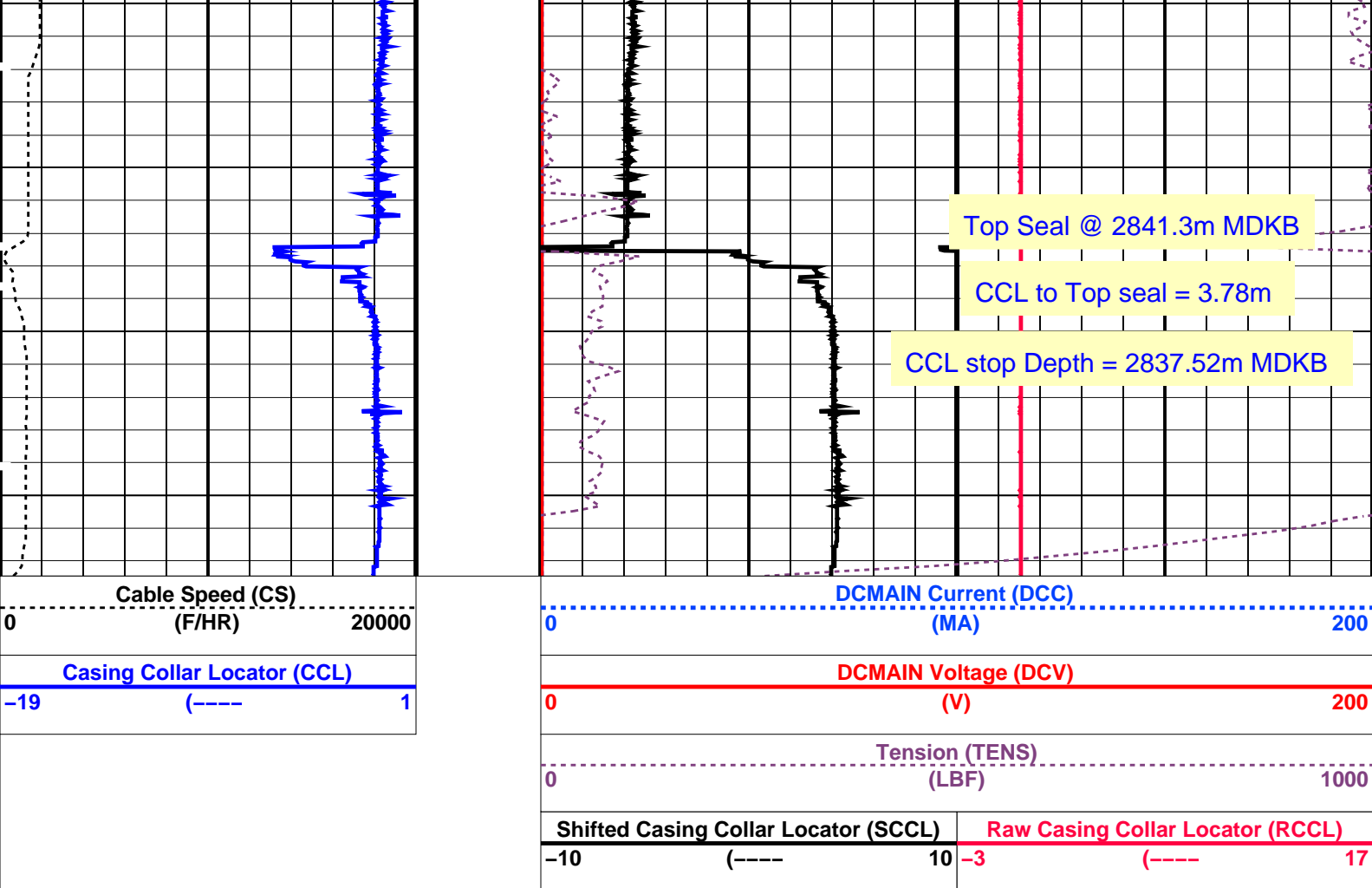
Patch Setting Pass


Output DLIS Files					
DEFAULT	PERFO_042LUP	FN:40	PRODUCER	28-Dec-2008 08:43	2847.4 M
2796.2 M					
OP System Version: 16C0-147					
MCM					
SHM_GUN	16C0-147	CCL-L	16C0-147		

PIP SUMMARY	
└─ Casing Collars	
Time Mark Every 60 S	

		Shifted Casing Collar Locator (SCCL)		Raw Casing Collar Locator (RCCL)	
		-10	(----	10	-3
				(----	
				17	
		Tension (TENS)			
		(LBF)			
		0		1000	
Casing Collar Locator (CCL)		DCMAIN Voltage (DCV)			
-19		(----		1	
		0		(V)	
				200	
Cable Speed (CS)		DCMAIN Current (DCC)			
0		(F/HR)			
		20000		0	
				(MA)	
				200	





PIP SUMMARY

← Casing Collars

Time Mark Every 60 S

Parameters

DLIS Name	Description	Value
CCL-L: Casing Collar Locator		
CCLD	CCL reset delay	12 IN
CCLT	CCL Detection Level	0.3 V

Format: PERFO Vertical Scale: 1:200 Graphics File Created: 28-Dec-2008 08:43

OP System Version: 16C0-147  
MCM

SHM\_GUN 16C0-147 CCL-L 16C0-147

Output DLIS Files

DEFAULT PERFO\_042LUP FN:40 PRODUCER 28-Dec-2008 08:43



Patch Correlation Pass

# Output DLIS Files

DEFAULT

PERFO\_041LUP

FN:39

PRODUCER

28-Dec-2008 08:36

OP System Version: 16C0-147

MCM

SHM\_GUN

16C0-147

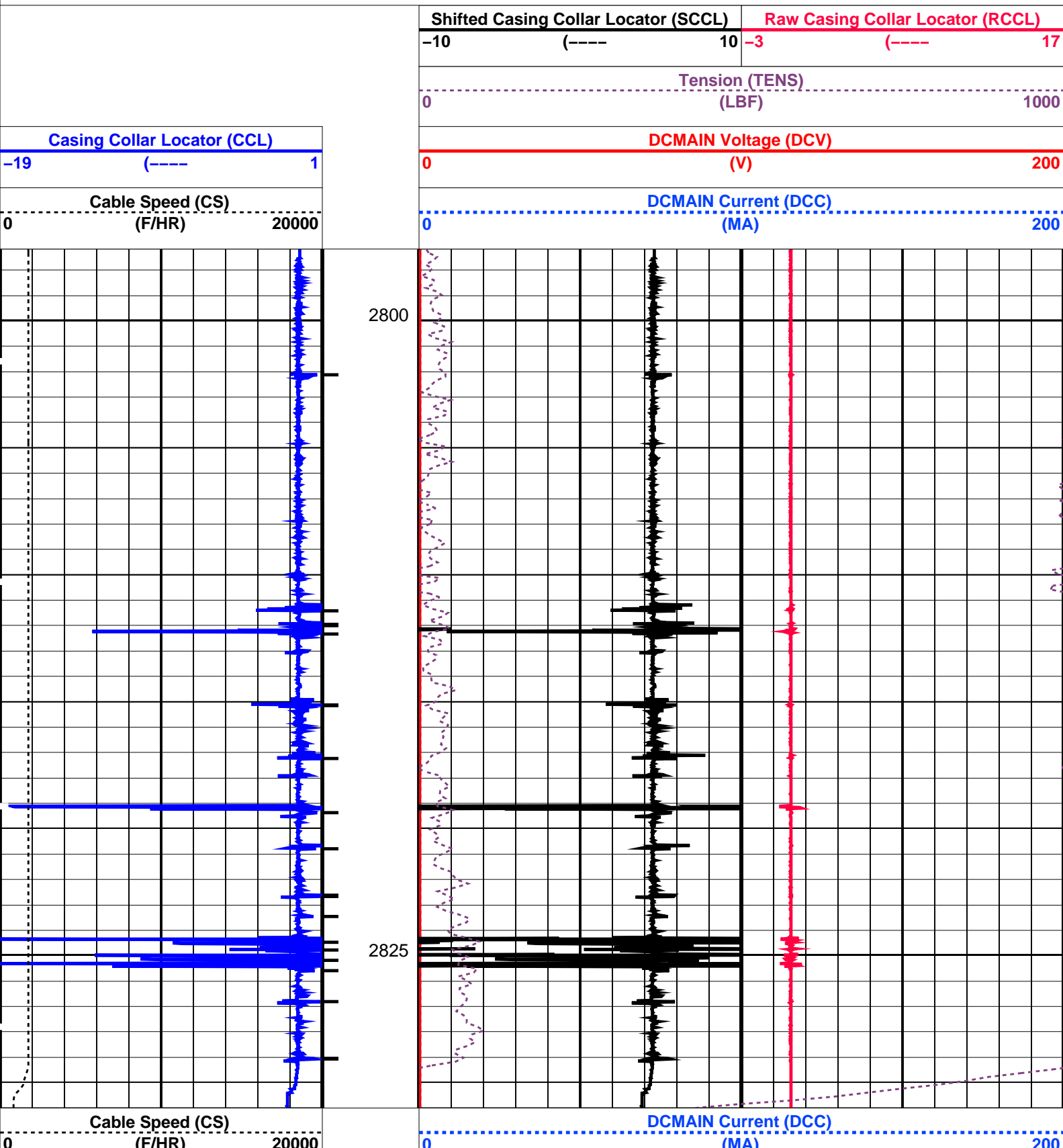
CCL-L

16C0-147

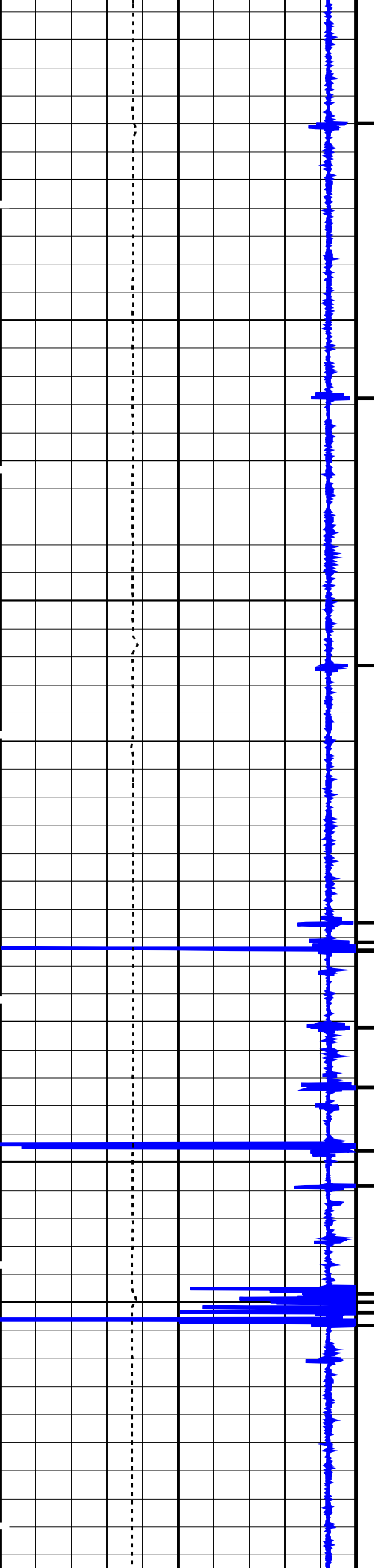
## PIP SUMMARY

└─ Casing Collars

Time Mark Every 60 S

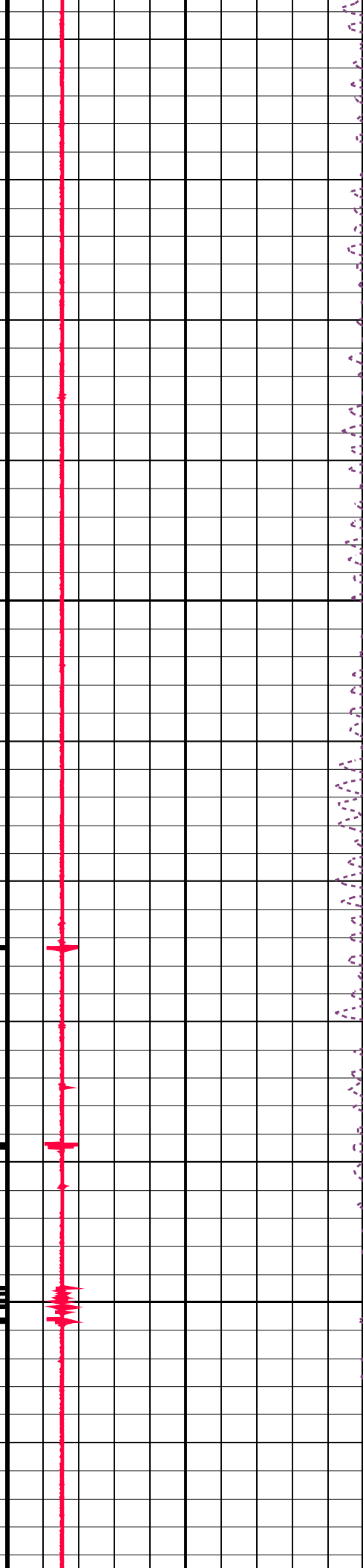
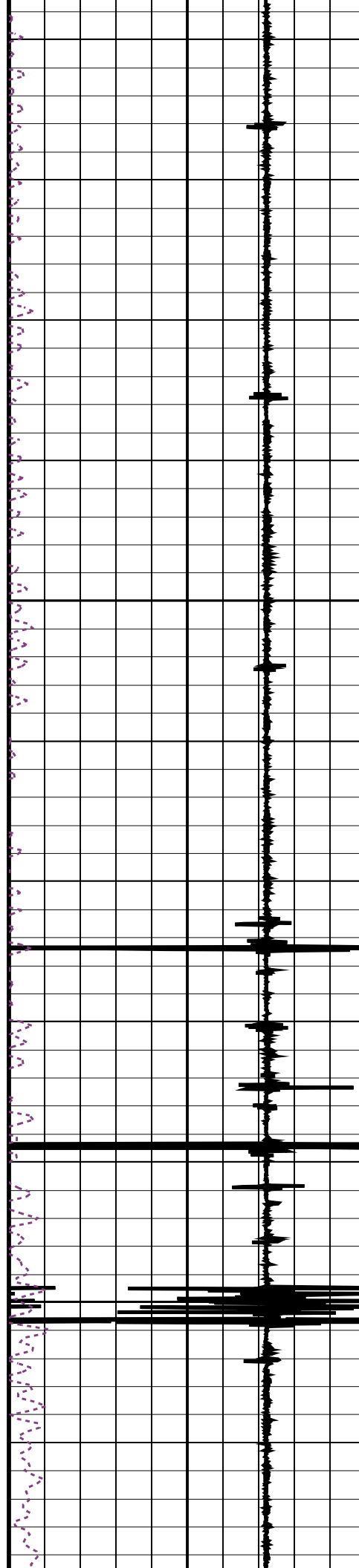


<div>Casing Collar Locator (CCL)</div> <div>-19 (----) 1</div>		<div>DCMAIN Voltage (DCV)</div> <div>0 (V) 200</div>	
		<div>Tension (TENS)</div> <div>0 (LBF) 1000</div>	
<div>Shifted Casing Collar Locator (SCCL)</div> <div>-10 (----) 10</div>		<div>Raw Casing Collar Locator (RCCL)</div> <div>-3 (----) 17</div>	
PIP SUMMARY			
<div><div></div>Time Mark Every 60 S</div> <div><div></div>Casing Collars</div>			
Parameters			
DLIS Name		Value	
Description			
CCL-L: Casing Collar Locator		12 IN	
CCLD	CCL reset delay	0.3 V	
CCLT	CCL Detection Level		
Format: PERFO		Graphics File Created: 28-Dec-2008 08:36	
Vertical Scale: 1:200			
OP System Version: 16C0-147			
MCM			
SHM_GUN	16C0-147	CCL-L	16C0-147
Output DLIS Files			
DEFAULT	PERFO_041LUP	FN:39	PRODUCER 28-Dec-2008 08:36
<div><div>Schlumberger</div><div>Drift Pass for Tubing Patch</div></div>			
MAXIS Field Log			
Input DLIS Files			
DEFAULT	PERFO_032LUP	FN:30	PRODUCER 27-Dec-2008 16:30 2855.1 M 2780.1 M
Output DLIS Files			
DEFAULT	PERFO_033PUP	FN:31	PRODUCER 27-Dec-2008 16:46 2853.4 M 2778.4 M
OP System Version: 16C0-147			
MCM			
SHM_GUN-OWEN	TUBING	CCL-L	16C0-147
PIP SUMMARY			
<div><div></div>Time Mark Every 60 S</div> <div><div></div>Casing Collars</div>			
<div>Casing Collar Locator (CCL)</div> <div>-19 (----) 1</div>		<div>Tension (TENS)</div> <div>0 (LBF) 1000</div>	
<div>Cable Speed (CS)</div> <div>0 (F/HR) 5000</div>		<div>Shifted Casing Collar Locator (SCCL)</div> <div>-10 (----) 10</div>	
		<div>Raw Casing Collar Locator (RCCL)</div> <div>-3 (----) 17</div>	

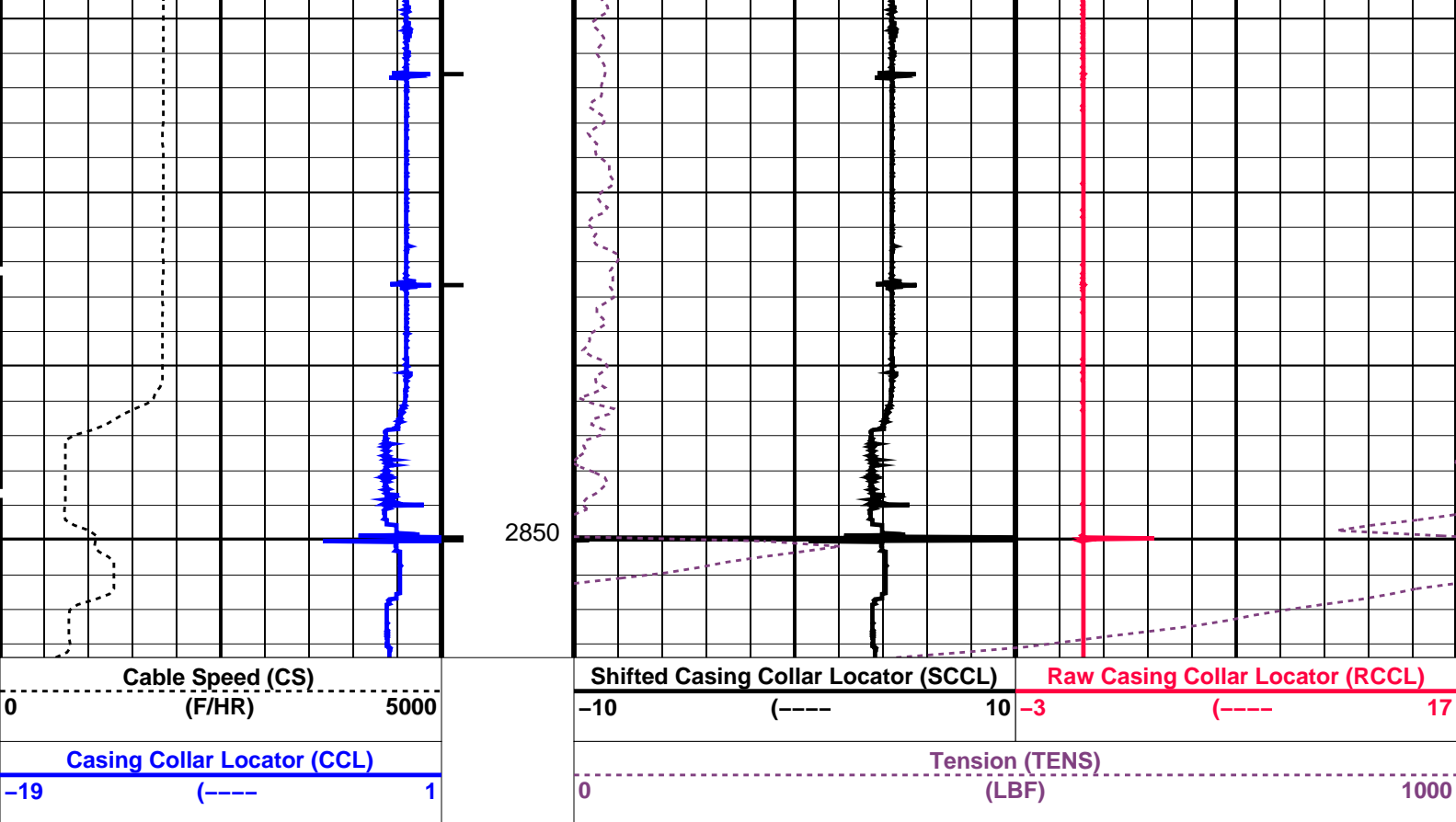


2800

2825







#### PIP SUMMARY

Time Mark Every 60 S

#### Parameters

DLIS Name	Description	Value
CCLD	CCL-L: Casing Collar Locator	12 IN
CCLT	CCL reset delay	0.3 V
DO	CCL Detection Level	-1.7 M
PP	System and Miscellaneous	NORMAL
	Depth Offset for Playback	
	Playback Processing	

Format: PERFO\_1 Vertical Scale: 1:200

Graphics File Created: 27-Dec-2008 16:46

#### OP System Version: 16C0-147

MCM

SHM\_GUN-OWEN TUBING

CCL-L

16C0-147

#### Input DLIS Files

DEFAULT	PERFO_032LUP	FN:30	PRODUCER	27-Dec-2008 16:30	2855.1 M	2780.1 M
---------	--------------	-------	----------	-------------------	----------	----------

#### Output DLIS Files

DEFAULT	PERFO_033PUP	FN:31	PRODUCER	27-Dec-2008 16:46
---------	--------------	-------	----------	-------------------

Schlumberger

Flowing Spinner Pass  
2855m to 2816m MDKB

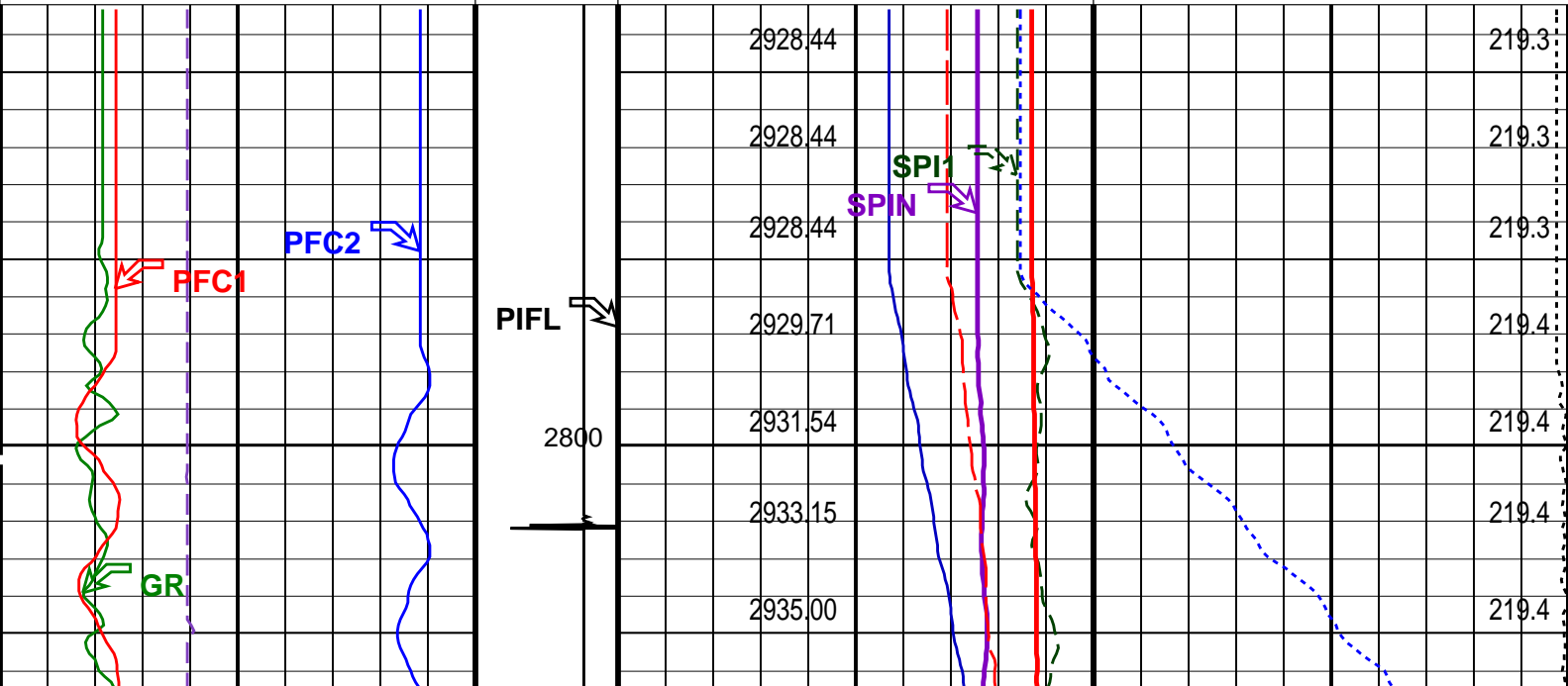
Input DLIS Files						
DEFAULT	FCS_ILS_PSP_022LUP	FN:21	PRODUCER	27-Dec-2008 12:56	2898.5 M	2792.7 M
Output DLIS Files						
DEFAULT	FCS_ILS_PSP_024PUP	FN:23	PRODUCER	27-Dec-2008 13:19	2898.8 M	2788.2 M

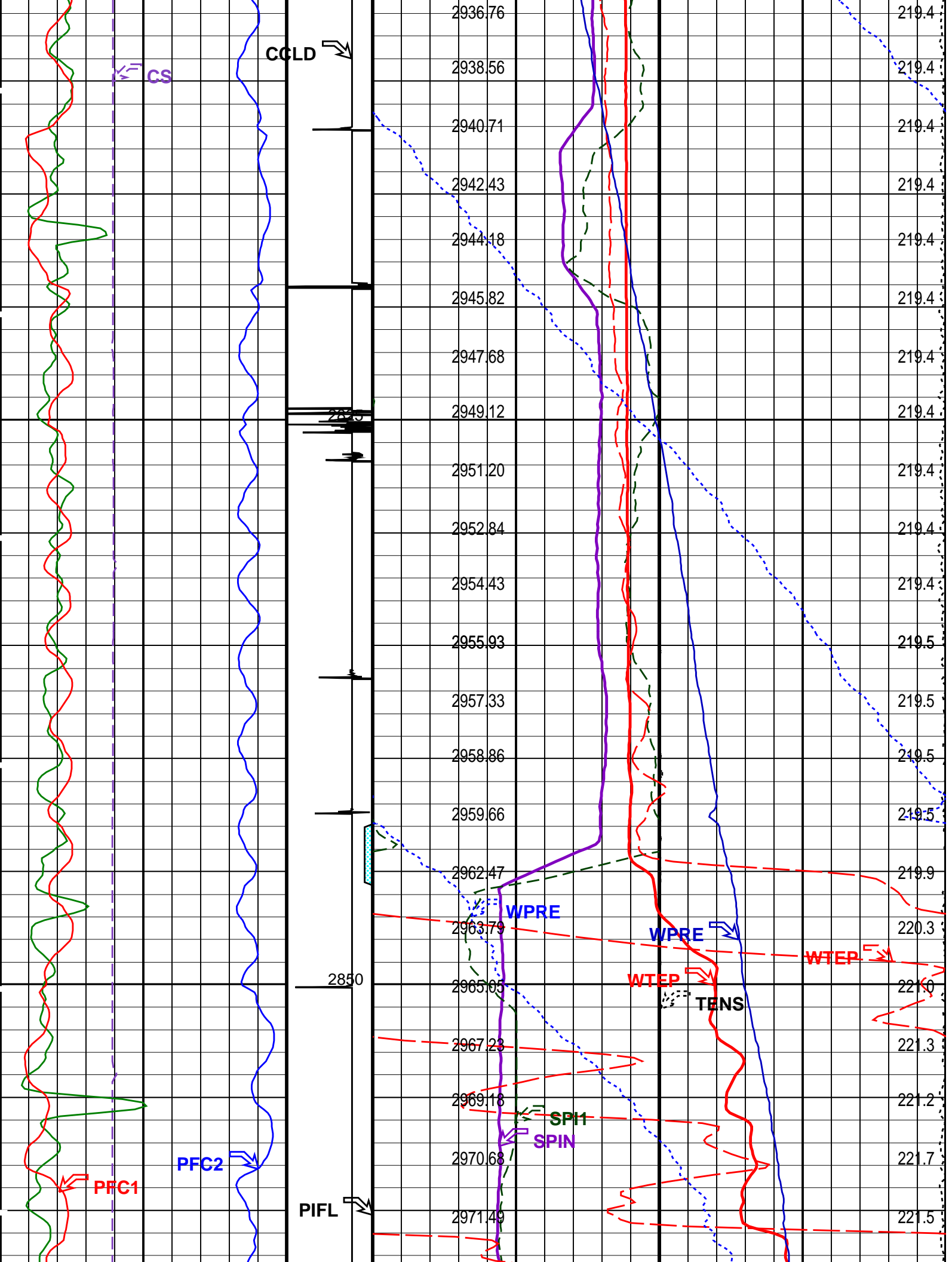
OP System Version: 16C0-147			
MCM			
PFCS-A	SRPC-3624-Q2_2008_OP16_b	PILS-A	SRPC-3624-Q2_2008_OP16_b
PSPT-B	SRPC-3624-Q2_2008_OP16_b		

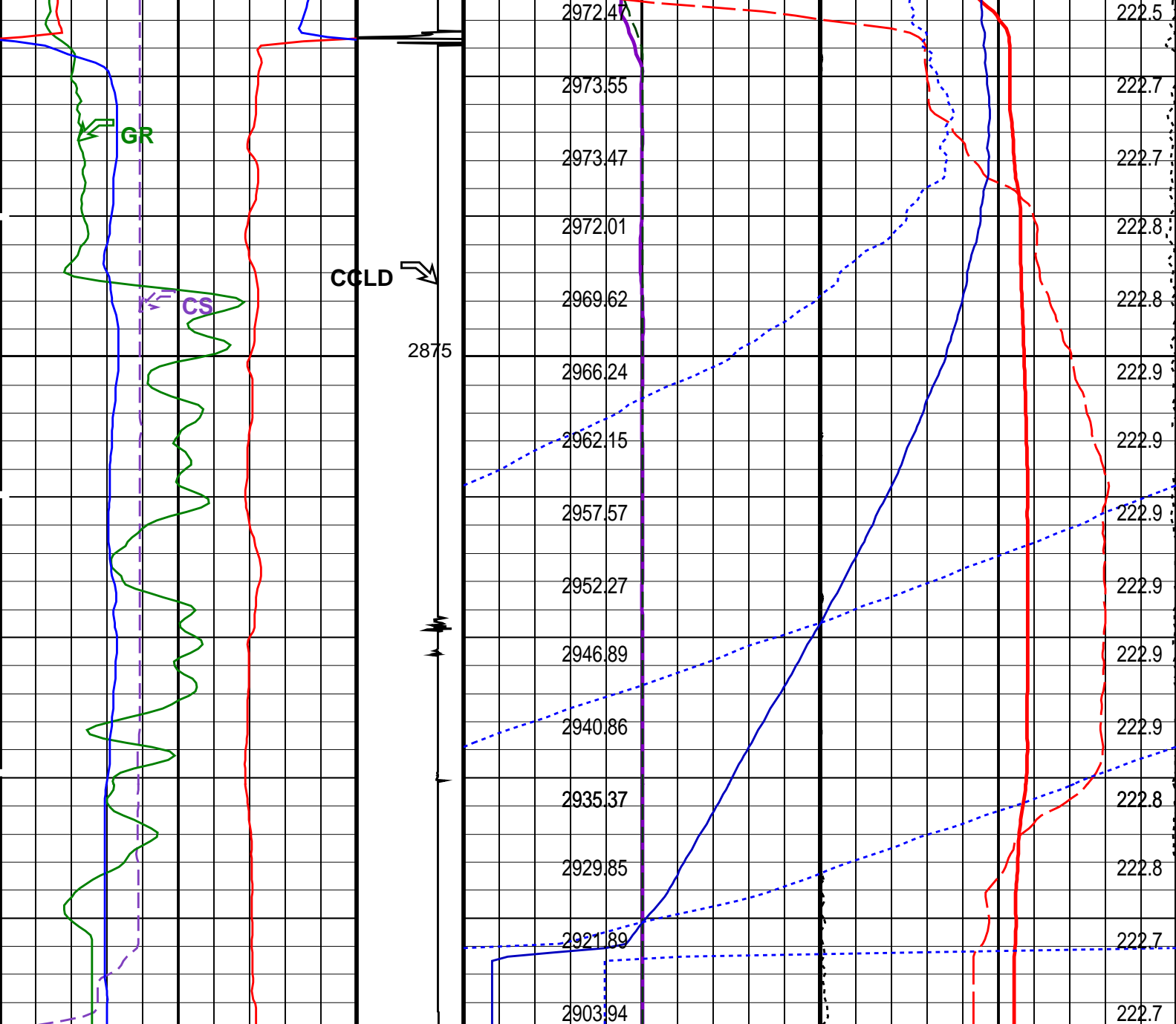
PIP SUMMARY

Time Mark Every 60 S

<div>PFCS Y Caliper (PFC2) (IN)</div> <div>PFCS X Caliper (PFC1) (IN)</div>		Amplified Well Pressure (WPRE) (PSIA)	
		Well Pressure (WPRE) (PSIA)	
		Well Pressure (WPRE) (PSIA)	
		Well Temperature (WTEP) (DEGF)	
Gamma Ray (GR) (GAPI)		Well Temperature (WTEP) (DEGF)	
Perfo Zone From PERFO CURVE to D3T	Filtered Auxiliary Spinner 1 (SPI1) (RPS)	Temperature (WTEP) (DEGF)	
Cable Speed (CS) (F/HR)	Discriminat ed CCL (CCLD) (V)	Filtered Main Spinner (SPIN) (RPS)	Tension (TENS) (LBF)








Cable Speed (CS) (F/HR)		Discriminat ed CCL (CCLD) 3 (V) -1	Filtered Main Spinner (SPIN) -20 (RPS) 20		Tension (TENS) (LBF) 0 2000	
0	5000					
Gamma Ray (GR) (GAPI)		Perfo Zone From PERFO_ CURVE to D3T	Filtered Auxiliary Spinner 1 (SPI1) -20 (RPS) 20		Temperature (WTEP) (DEGF)	
0	150					
PFCS X Caliper (PFC1) (IN)			Well Temperature (WTEP) (DEGF)			
4	-4		215 225			
PFCS Y Caliper (PFC2) (IN)			Well Temperature (WTEP) (DEGF)			
-4	4		0 1			
			Well Pressure (WPRE) (PSIA)			
			Well Pressure (WPRE) (PSIA)			
			2900 3000			
			Amplified Well Pressure (WPRE) (PSIA)			

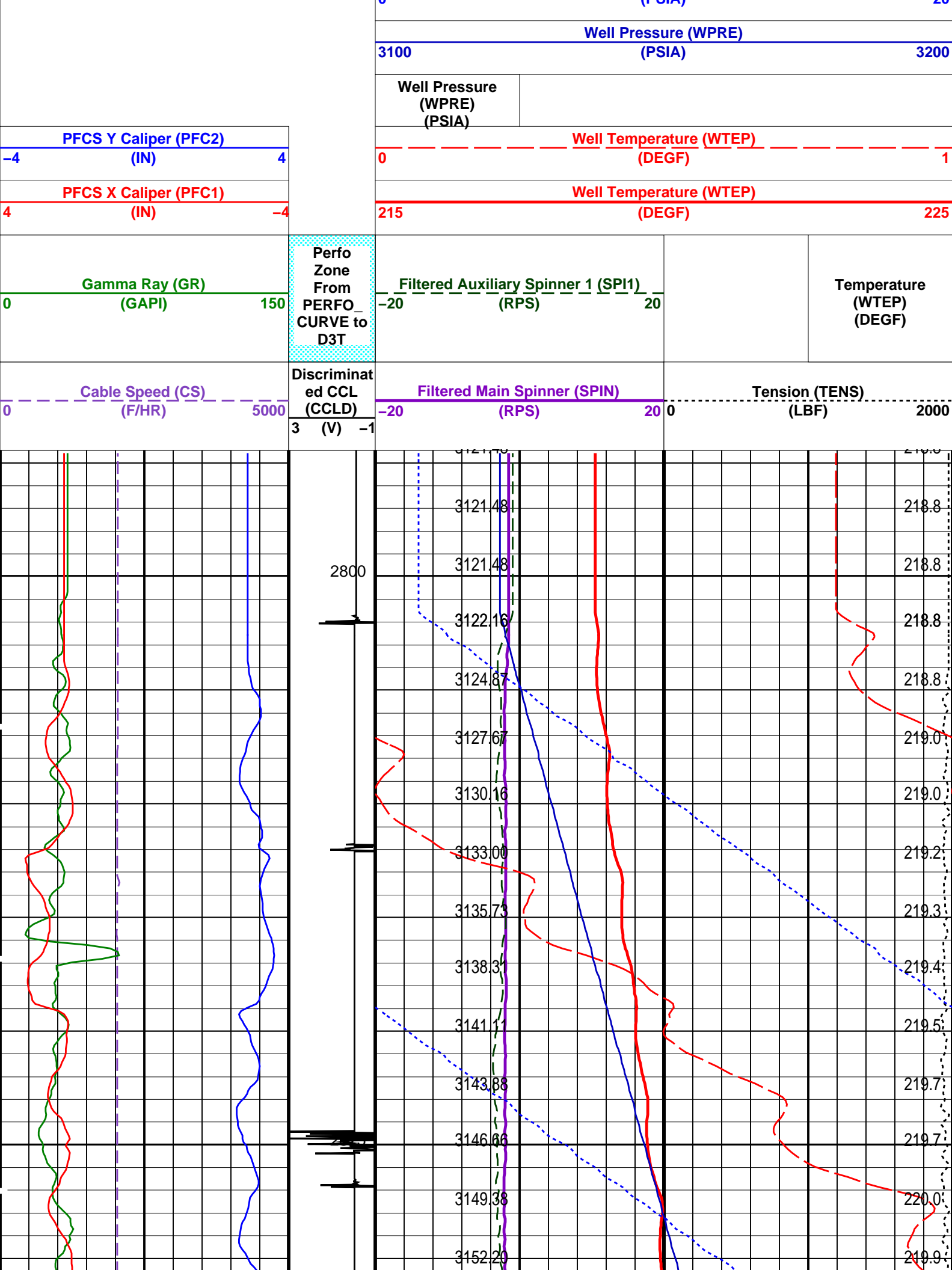
PIP SUMMARY						
Time Mark Every 60 S						
Format: PSP+SPIN			Vertical Scale: 1:200		Graphics File Created: 27-Dec-2008 13:19	
OP System Version: 16C0-147						
MCM						
PFCS-A		SRPC-3624-Q2_2008_OP16_b		PILS-A		SRPC-3624-Q2_2008_OP16_b
PSPT-B		SRPC-3624-Q2_2008_OP16_b				
Parameters						
DLIS Name		Description			Value	
		PFCS-A: PSP Flow and caliper Tool				
AMOD		Spinner Filter Averaging Mode			LINEAR_AVERAGE	
SDCF		Spinner Depth Constant Filter			6	
SPI1		Auxiliary Spinner 1 Flowmeter Sonde			PILS-A	
SPIN		Main Spinner Flowmeter Sonde			PFCS-A_TURB	
		PILS-A: PSP In Line Spinner Flowmeter				
AMOD		Spinner Filter Averaging Mode			LINEAR_AVERAGE	
SDCF		Spinner Depth Constant Filter			6	
SPI1		Auxiliary Spinner 1 Flowmeter Sonde			PILS-A	
SPIN		Main Spinner Flowmeter Sonde			PFCS-A_TURB	
		System and Miscellaneous				
DO		Depth Offset for Playback			0.3 M	
PP		Playback Processing			NORMAL	
Input DLIS Files						
DEFAULT	FCS_ILS_PSP_022LUP	FN:21	PRODUCER	27-Dec-2008 12:56	2898.5 M	2792.7 M
Output DLIS Files						
DEFAULT	FCS_ILS_PSP_024PUP	FN:23	PRODUCER	27-Dec-2008 13:19		

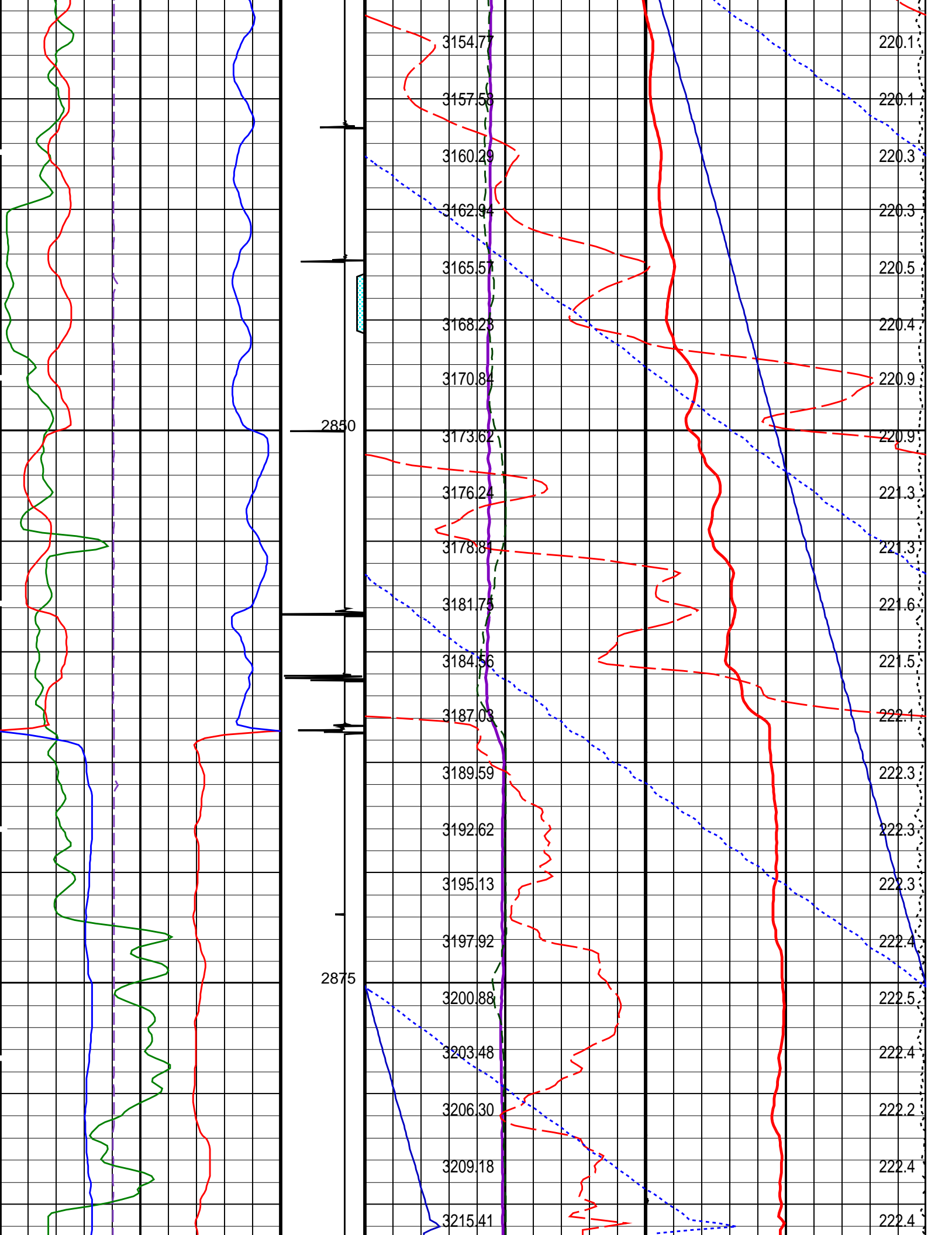


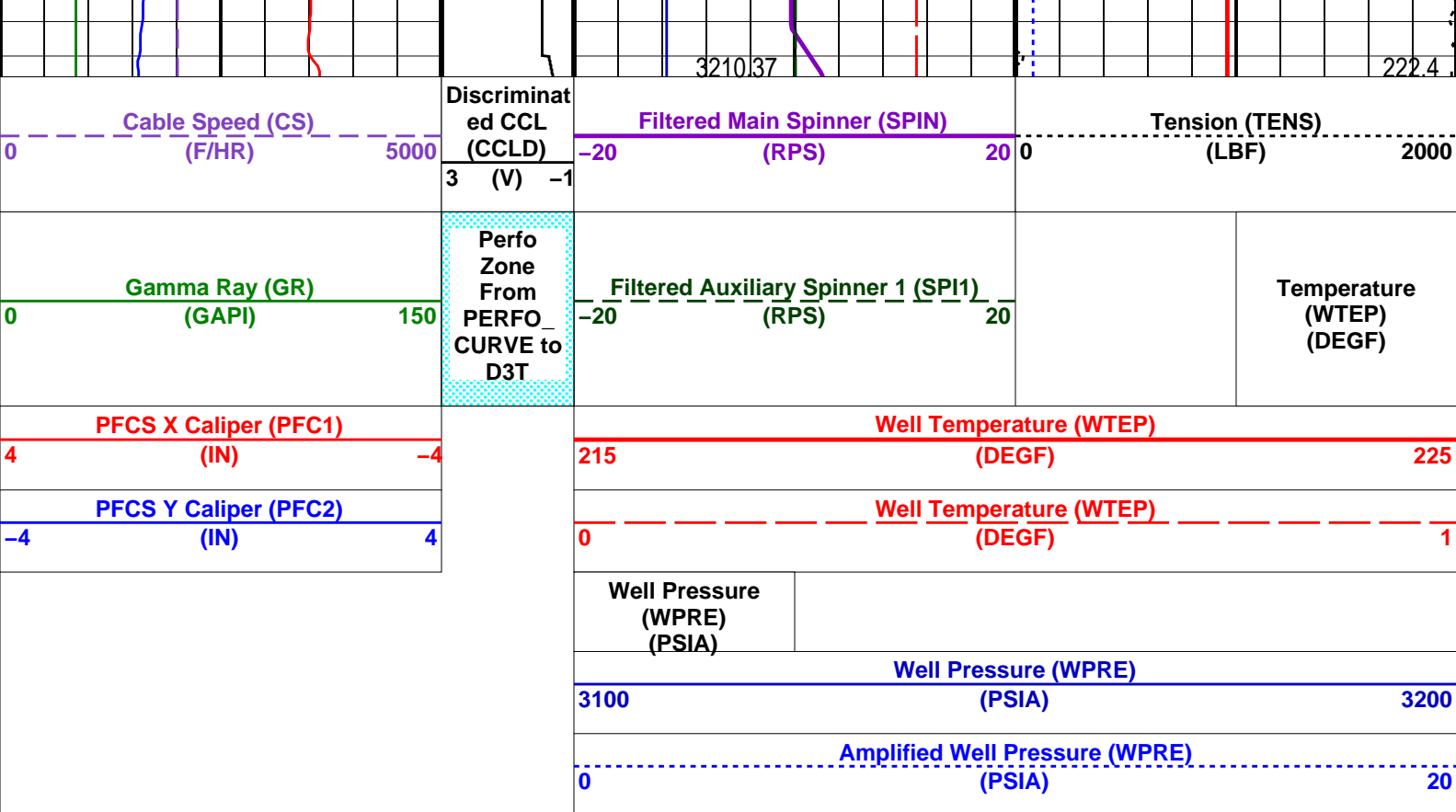
Static Spinner Pass  
2855m to 2816m MDKB

MAXIS Field Log

Company: Esso Australia Pty Ltd.					Well: A-5B	
Input DLIS Files						
DEFAULT	FCS_ILS_PSP_017LUP	FN:16	PRODUCER	27-Dec-2008 12:06	2880.1 M	2790.7 M
Output DLIS Files						
DEFAULT	FCS_ILS_PSP_019PUP	FN:18	PRODUCER	27-Dec-2008 12:20	2888.6 M	2794.4 M
OP System Version: 16C0-147						
MCM						
PFCS-A	SRPC-3624-Q2_2008_OP16_b	PILS-A		SRPC-3624-Q2_2008_OP16_b		
PSPT-B	SRPC-3624-Q2_2008_OP16_b					
PIP SUMMARY						
<div><div></div>Time Mark Every 60 S</div>						







Time Mark Every 60 S

Format: PSP+SPIN Vertical Scale: 1:200 Graphics File Created: 27-Dec-2008 12:20

OP System Version: 16C0-147  
MCM

PFC1-A SRPC-3624-Q2\_2008\_OP16\_b PILS-A SRPC-3624-Q2\_2008\_OP16\_b  
PSP-B SRPC-3624-Q2\_2008\_OP16\_b

Parameters		
DLIS Name	Description	Value
PFC1-A: PSP Flow and caliper Tool		
AMOD	Spinner Filter Averaging Mode	LINEAR_AVERAGE
SDCF	Spinner Depth Constant Filter	6
SPI1	Auxiliary Spinner 1 Flowmeter Sonde	PILS-A
SPIN	Main Spinner Flowmeter Sonde	PFC1-A_TURB
PILS-A: PSP In Line Spinner Flowmeter		
AMOD	Spinner Filter Averaging Mode	LINEAR_AVERAGE
SDCF	Spinner Depth Constant Filter	6
SPI1	Auxiliary Spinner 1 Flowmeter Sonde	PILS-A
SPIN	Main Spinner Flowmeter Sonde	PFC1-A_TURB
System and Miscellaneous		
DO	Depth Offset for Playback	8.6 M
PP	Playback Processing	NORMAL

Input DLIS Files						
DEFAULT	FCS_ILS_PSP_017LUP	FN:16	PRODUCER	27-Dec-2008 12:06	2880.1 M	2790.7 M
Output DLIS Files						
DEFAULT	FCS_ILS_PSP_019PUP	FN:18	PRODUCER	27-Dec-2008 12:20		



Rig: **Crane / Prod 4**  
Country: **Australia**

Pressure / Temperature / Spinner Survey  
Set OWEN Tubing Patch  
1 11/16" Powerspiral Perforation Record