



# PRESSURE EVALUATION LOG

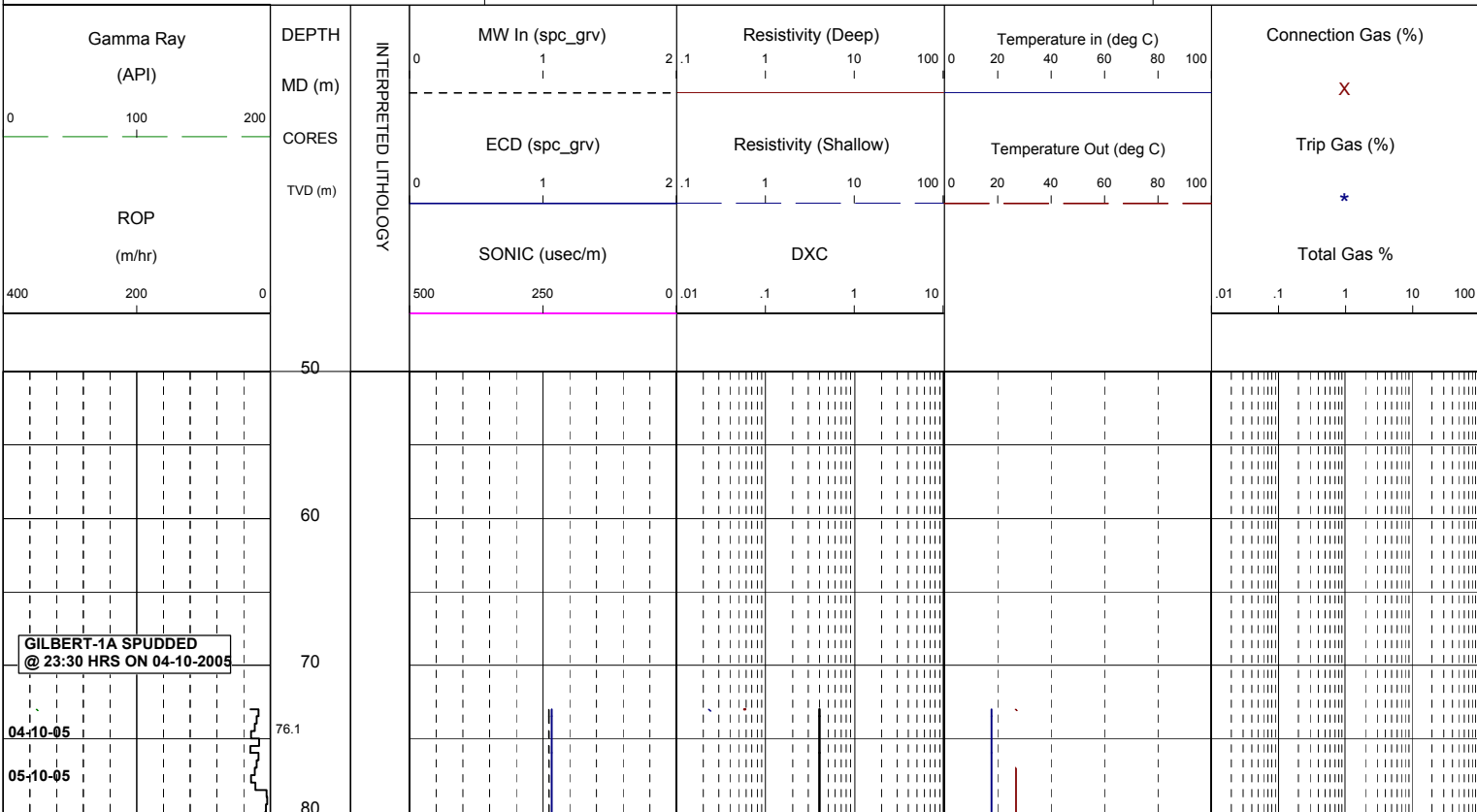
WELL : GILBERT 1A



FROM (m): 50 TO (m): 340 SCALE: 1/ 500

Country : AUSTRALIA	Latitude : 37°57'10.72"S	508mm Shoe at (mMDRT) : 106m	Spud Date : 04-10-2005
Region : VICTORIA	Longitude : 148°22'25.90"E	340mm Shoe at (mMDRT) : 331m	Total Depth Date :
Field :	X (m) : 5,798,512.1 mE		Total Depth (mRT) :
Permit : VIC/P-47	Y (m) : 620,701.1 mE		T.V.D. (mSSLAT) :
Well Type : VERTICAL EXPLORATION	RT-LAT (m) : 21.5		Status : P & A
Rig Name : OCEAN PATRIOT	RT-Seabed (m) : 72.8		

ABBREVIATIONS	LITHOLOGY LEGEND	ENGINEERING LEGEND
MW MUD WEIGHT FV FUNNEL VISCOSITY PV PLASTIC VISCOSITY YP YIELD POINT FC FILTER CAKE WL FILTRATE SD SAND - % S SALINITY - PPM RM MUD RESISTIVITY RMF MUD FILTRATE C CARBIDE TEST LAT LOGGED AFTER TRIP DS DEVIATION SURVEY	Limestone Med Sandstone Fine Sandstone Siltstone Claystone Calcarenite Calcsiltite Calcilutite Anhydrite Coal Marl Dolomite Carb. Siltstone Calc Claystone Lithic frag	Deviation Survey Casing Shoe Wiper Trip SWC (rec) SWC (unrec) Core Bit Trip
NB NEW BIT RR RERUN BIT CB CORE BIT WOB WEIGHT ON BIT RPM REVS PER MINUTE FLC FLOW CHECK CR CIRCULATE RETURNS PR POOR RETURNS NR NO RETURNS BG BACKGROUND GAS TG TRIP GAS STG SHORT TRIP GAS CG CONNECTION GAS SG SWAB GAS SVG SURVEY GAS		



914mm (36") Hole section  
from 72.8m to 107 mMDRT

508mm (20") Csg Shoe  
set @ 106 mMDRT

06-18-05

88  
90  
93  
100  
110  
113  
120  
130  
133  
140  
150  
153  
160  
170  
173  
180  
190  
193  
200  
210  
213  
220

