



# PRESSURE EVALUATION LOG

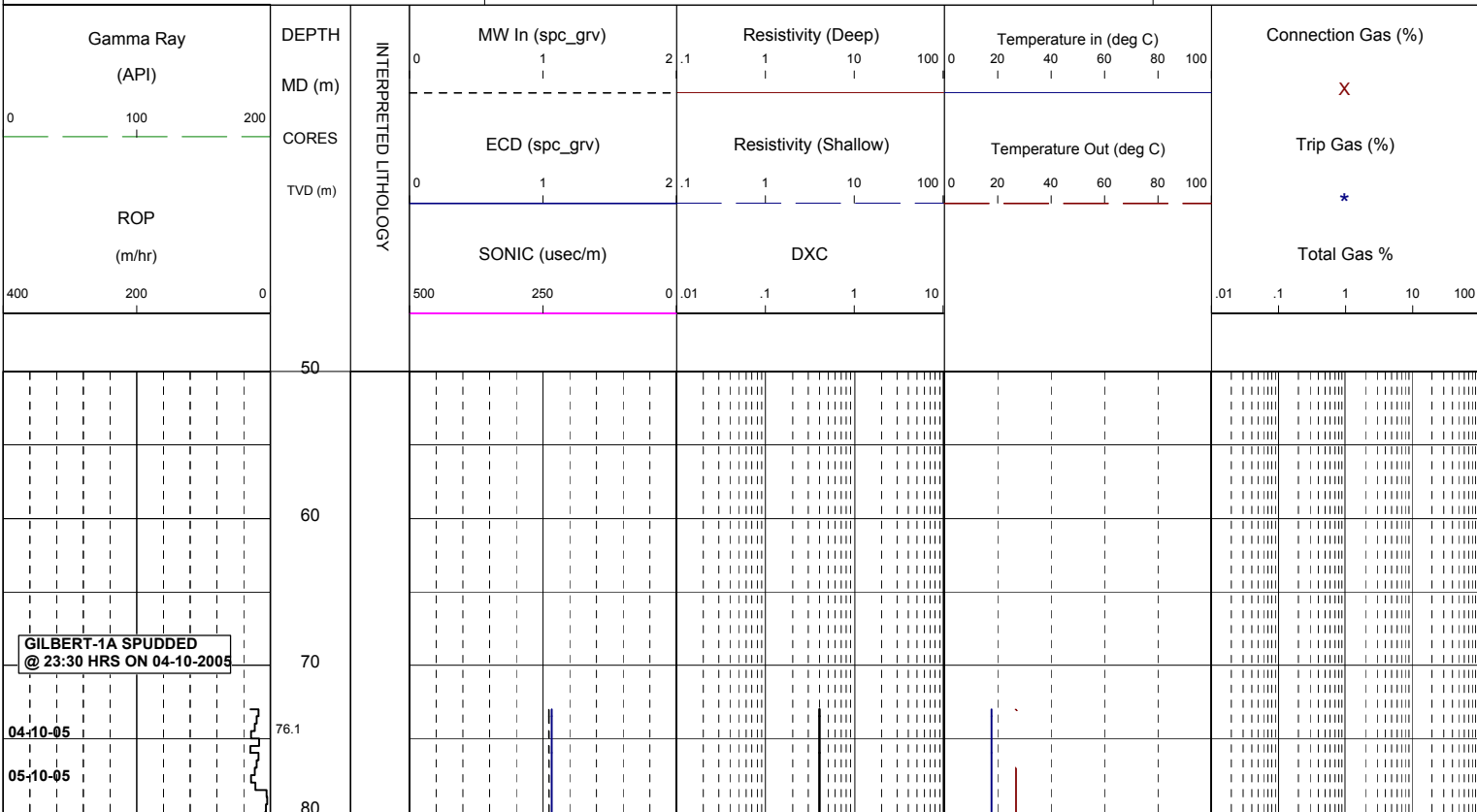
WELL : GILBERT 1A



FROM (m): 50 TO (m): 210 SCALE: 1/ 500

Country : AUSTRALIA	Latitude : 37°57'10.72"S	508mm Shoe at (mMDRT) : 106m	Spud Date : 04-10-2005
Region : VICTORIA	Longitude : 148°22'25.90"E	444mm Shoe at (mMDRT) :	Total Depth Date :
Field :	X (m) : 5,798,512.1 mE		Total Depth (mRT) :
Permit : VIC/P-47	Y (m) : 620,701.1 mE		T.V.D. (mSSLAT) :
Well Type : VERTICAL EXPLORATION	RT-LAT (m) : 21.5		Status : P & A
Rig Name : OCEAN PATRIOT	RT-Seabed (m) : 72.8		

ABBREVIATIONS	LITHOLOGY LEGEND	ENGINEERING LEGEND
MW MUD WEIGHT FV FUNNEL VISCOSITY PV PLASTIC VISCOSITY YP YIELD POINT FC FILTER CAKE WL FILTRATE SD SAND - % S SALINITY - PPM RM MUD RESISTIVITY RMF MUD FILTRATE C CARBIDE TEST LAT LOGGED AFTER TRIP DS DEVIATION SURVEY	Limestone Med Sandstone Fine Sandstone Siltstone Claystone Calcarenite Calcsiltite Calcilutite Anhydrite Coal Marl Dolomite Carb. Siltstone Calc Claystone Lithic frag	Deviation Survey Casing Shoe Wiper Trip SWC (rec) SWC (unrec) Core Bit Trip
NB NEW BIT RR RERUN BIT CB CORE BIT WOB WEIGHT ON BIT RPM REVS PER MINUTE FLC FLOW CHECK CR CIRCULATE RETURNS PR POOR RETURNS NR NO RETURNS BG BACKGROUND GAS TG TRIP GAS STG SHORT TRIP GAS CG CONNECTION GAS SG SWAB GAS SVG SURVEY GAS	Pyrite Glauconite Mica Ferrous Fossils Calcareous Dolomitic	



914mm (36") Hole section  
from 72.8m to 107 mMDRT

508mm (20") Csg Shoe  
set @ 106 mMDRT

06-10-05

