



### Input DLIS Files

DEFAULT HALS\_DSI\_TLD\_MCFL\_073PUP FN:76 PRODUCER 10-Oct-2005 12:02 809.1 M 71.3 M

### Output DLIS Files

DEFAULT HALS\_DSI\_TLD\_MCFL\_075PUP FN:80 PRODUCER 10-Oct-2005 12:30 809.1 M 325.5 M  
 RT HALS\_DSI\_TLD\_MCFL\_075PUP FN:81 PRODUCER 10-Oct-2005 12:30 809.1 M 325.5 M

### Integrated Hole/Cement Volume Summary

Hole Volume = 37.42 M3  
 Cement Volume = 37.42 M3 (assuming 0.00 IN casing O.D.)  
 Computed from 809.1 M to 325.7 M using data channel(s) HCAL

### OP System Version: 13C0-300

MCM

HALS-B SRPC-2788-HILT\_b DSST-B 13C0-300  
 HILTB-FTB SRPC-2788-HILT\_b DTC-H 13C0-300  
 BSP 13C0-300

### PIP SUMMARY

- └ Integrated Hole Volume Minor Pip Every 0.1 M3
- └ Integrated Hole Volume Major Pip Every 1 M3

Time Mark Every 60 S

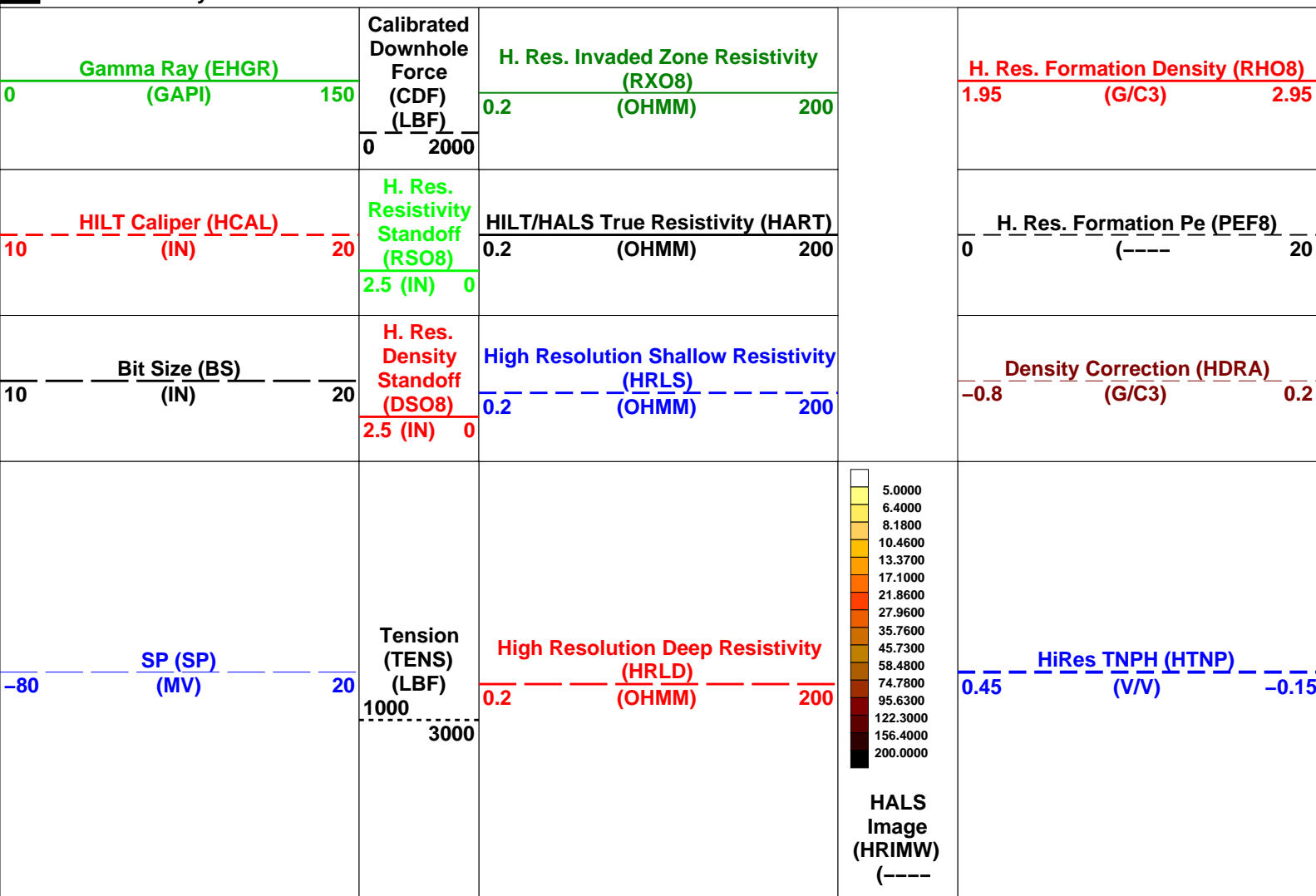
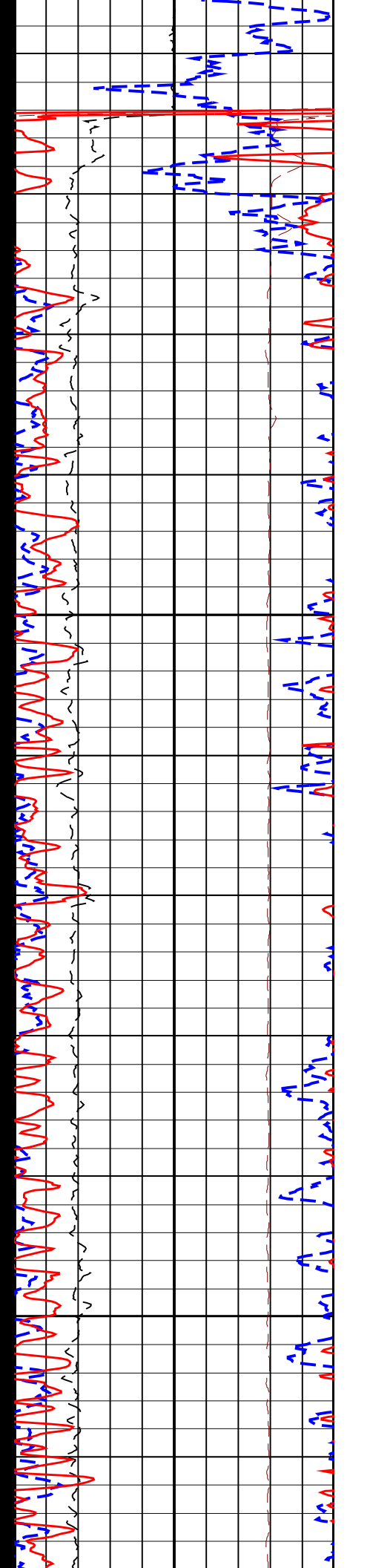
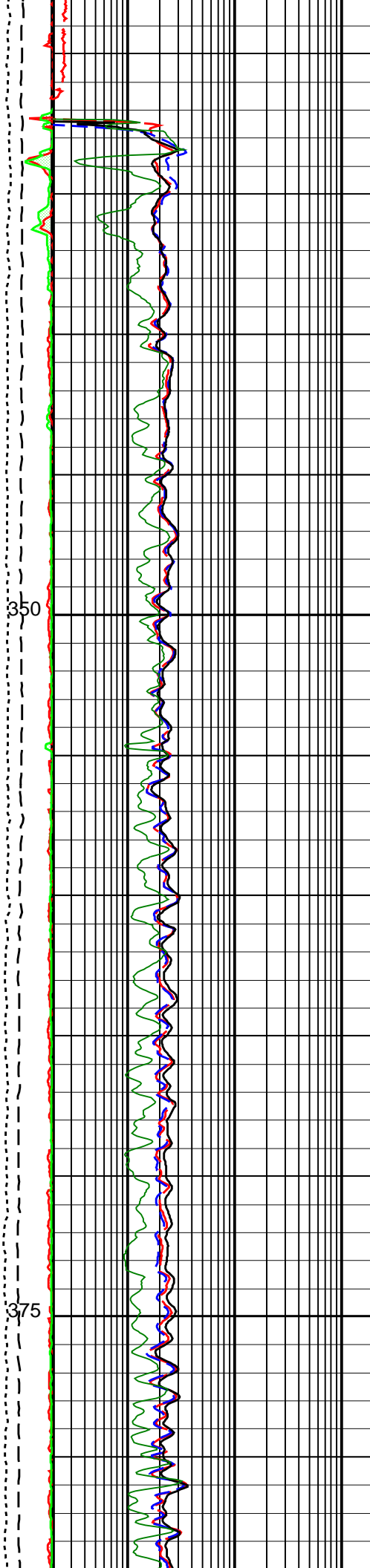
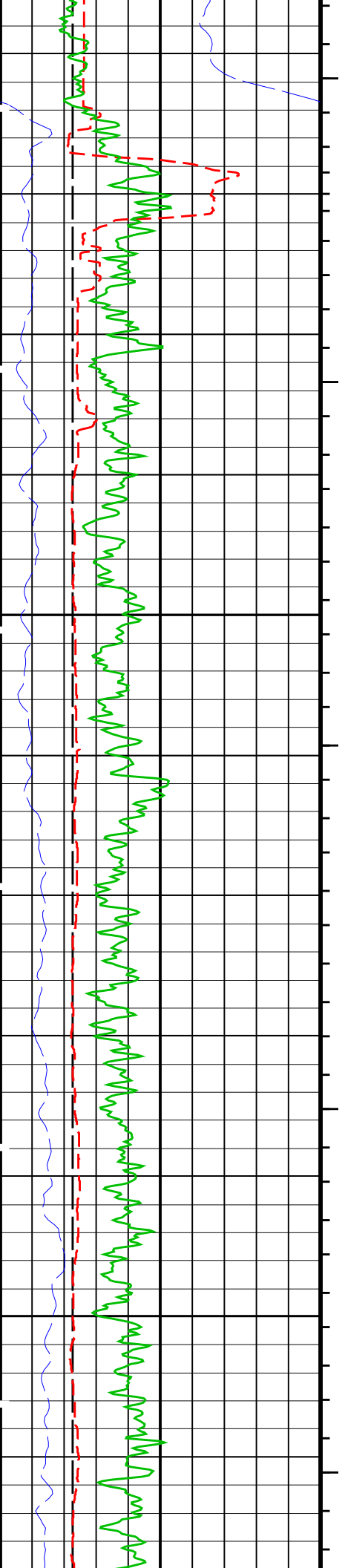
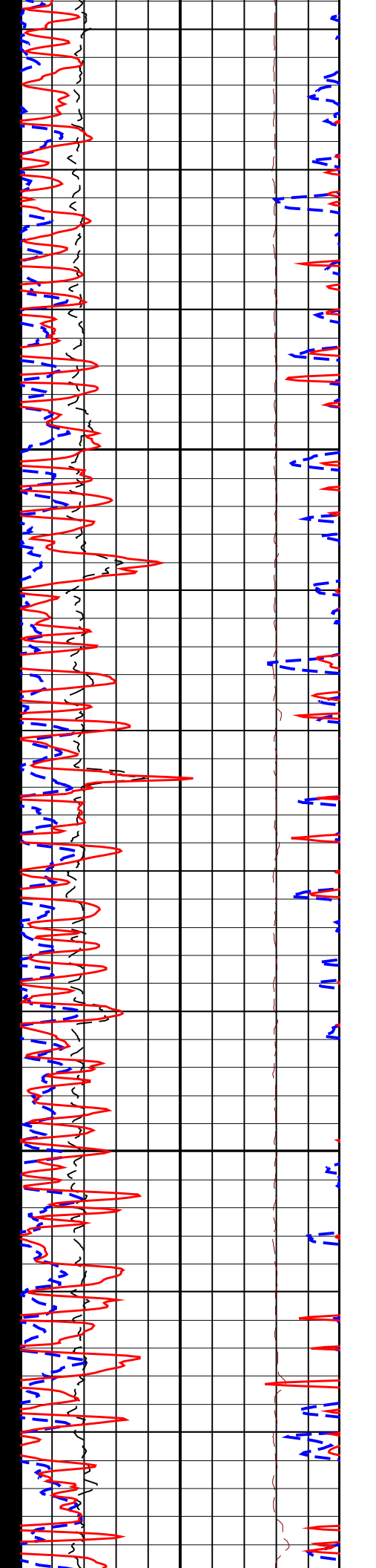
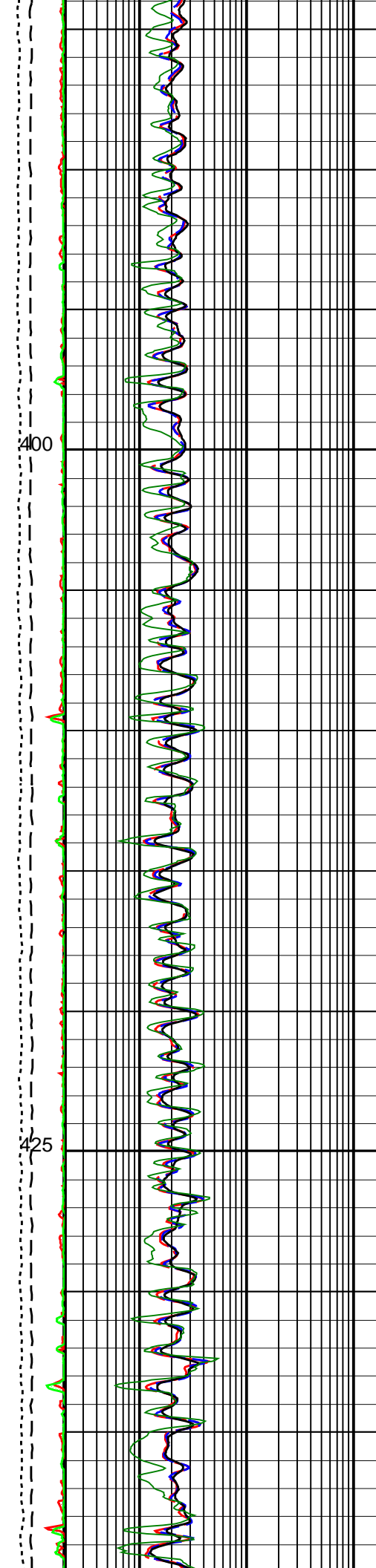
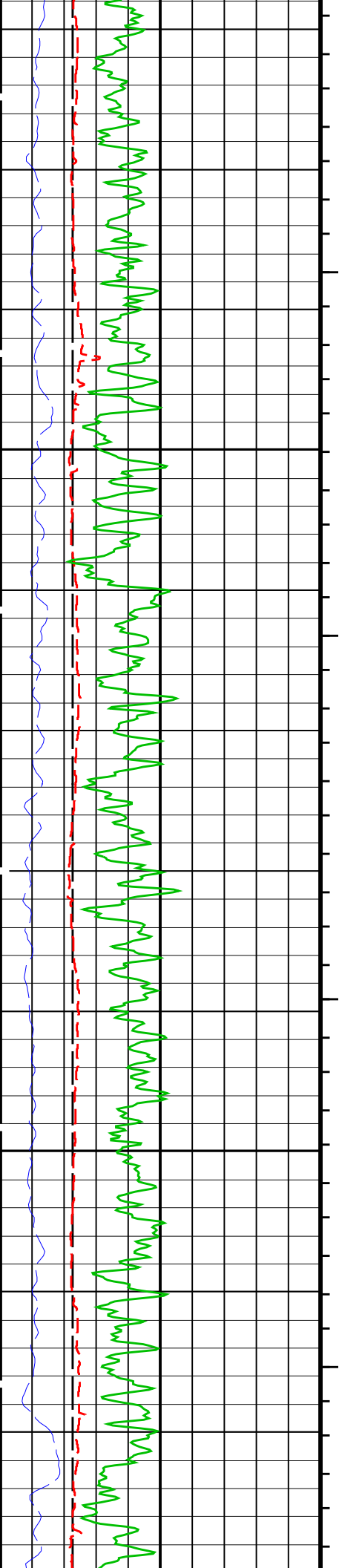
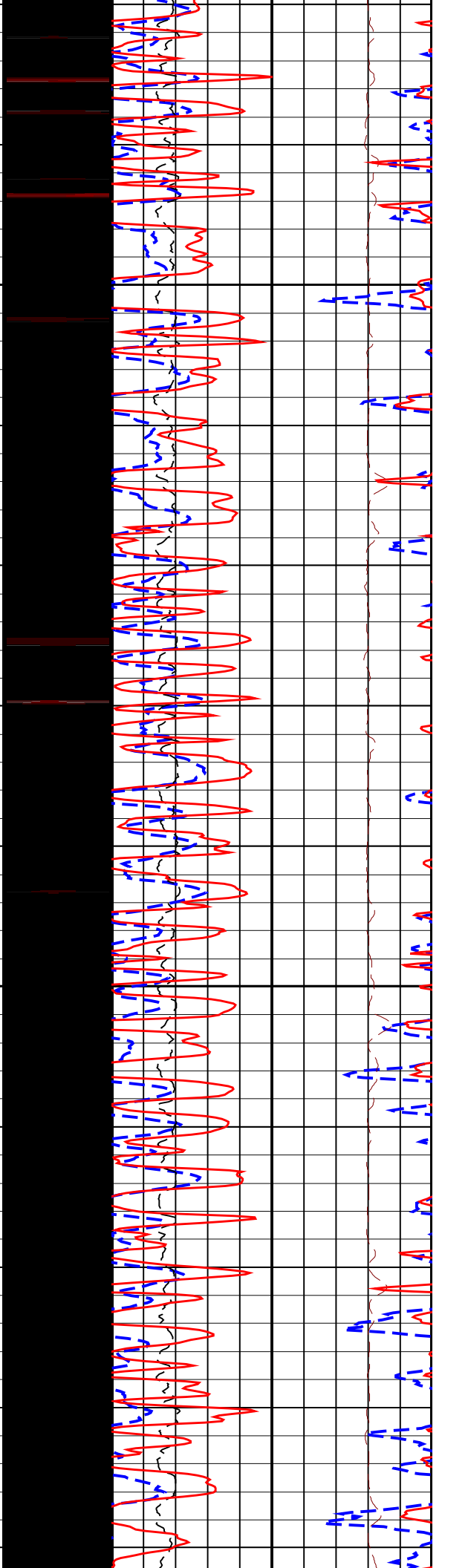
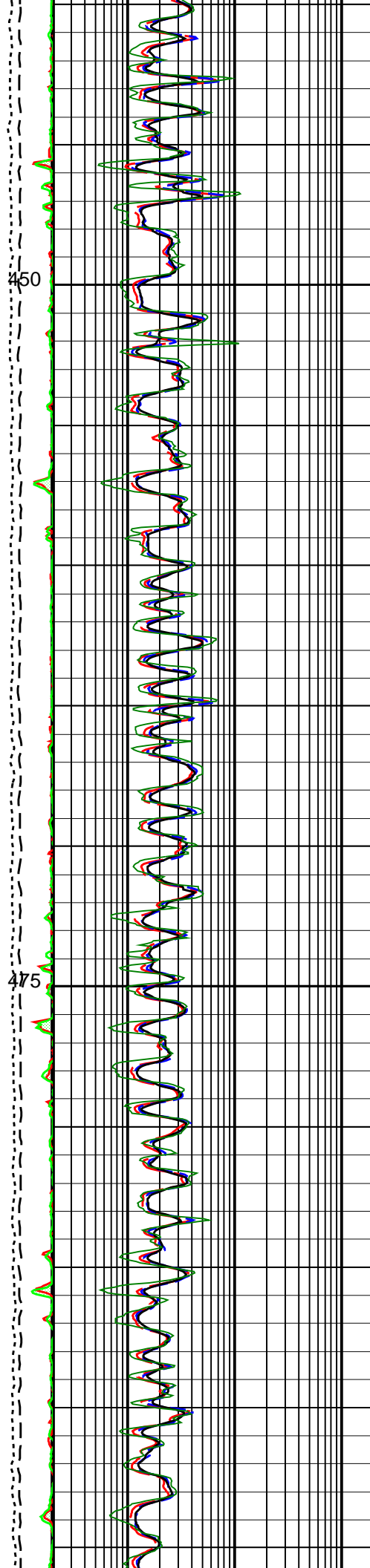
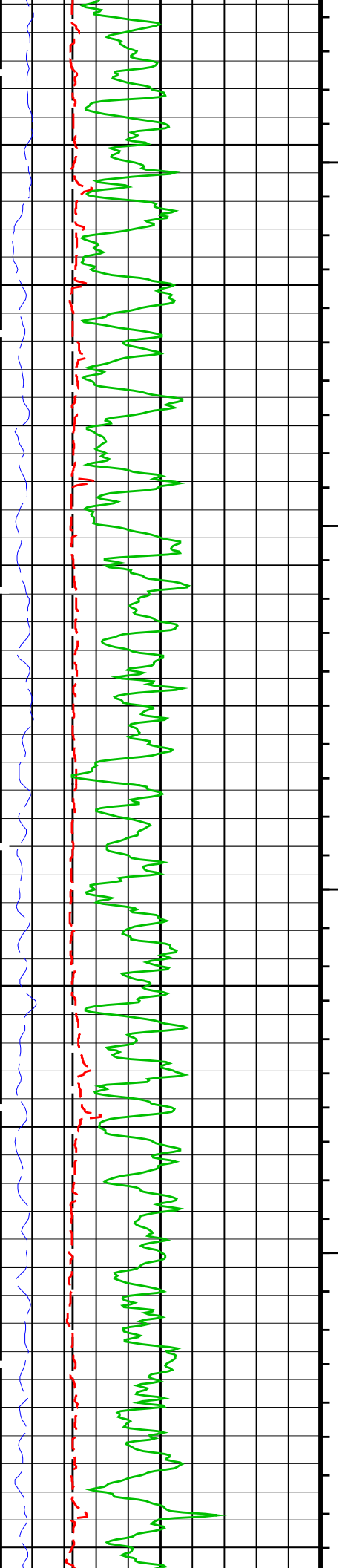


Image: Shallow Raw Conductivities (MMHO)



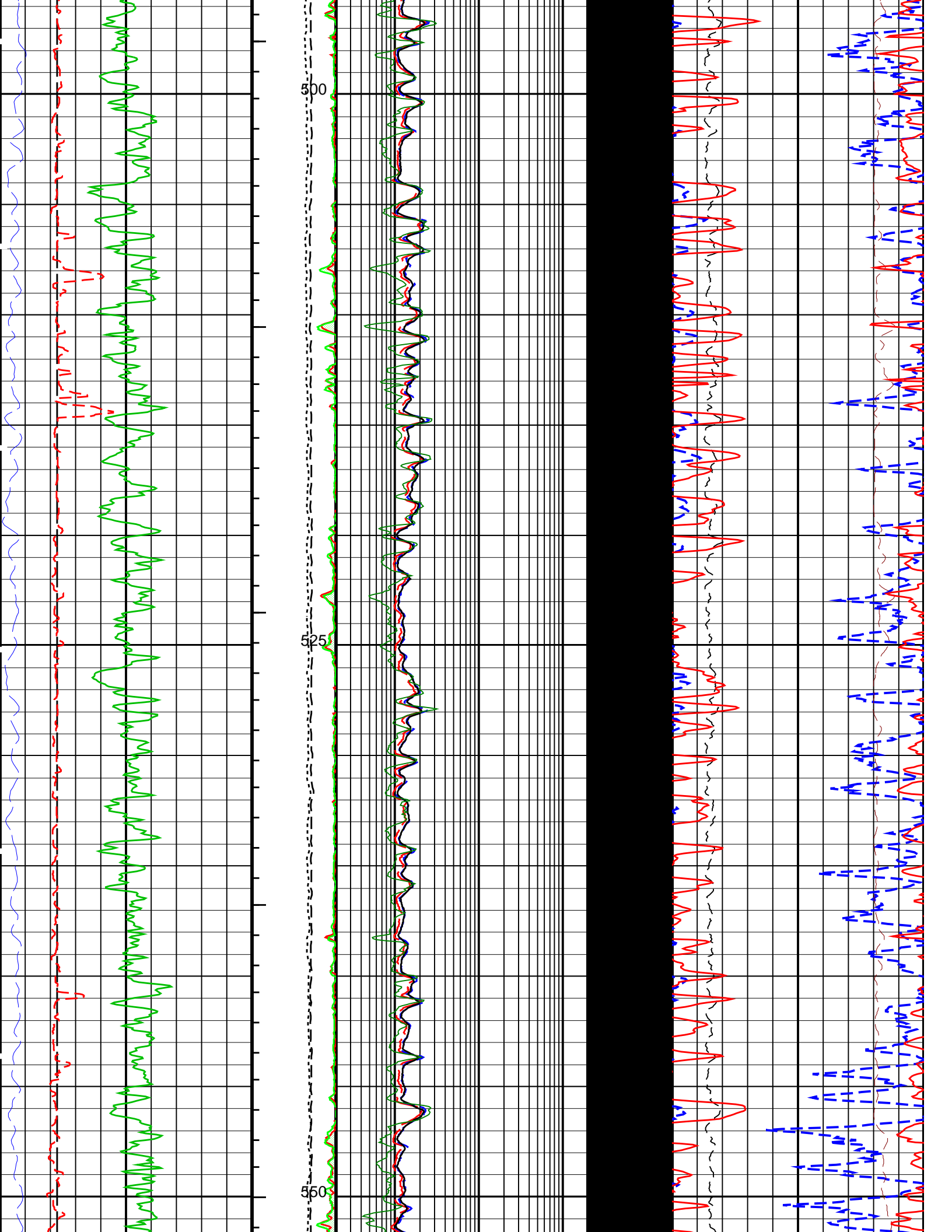


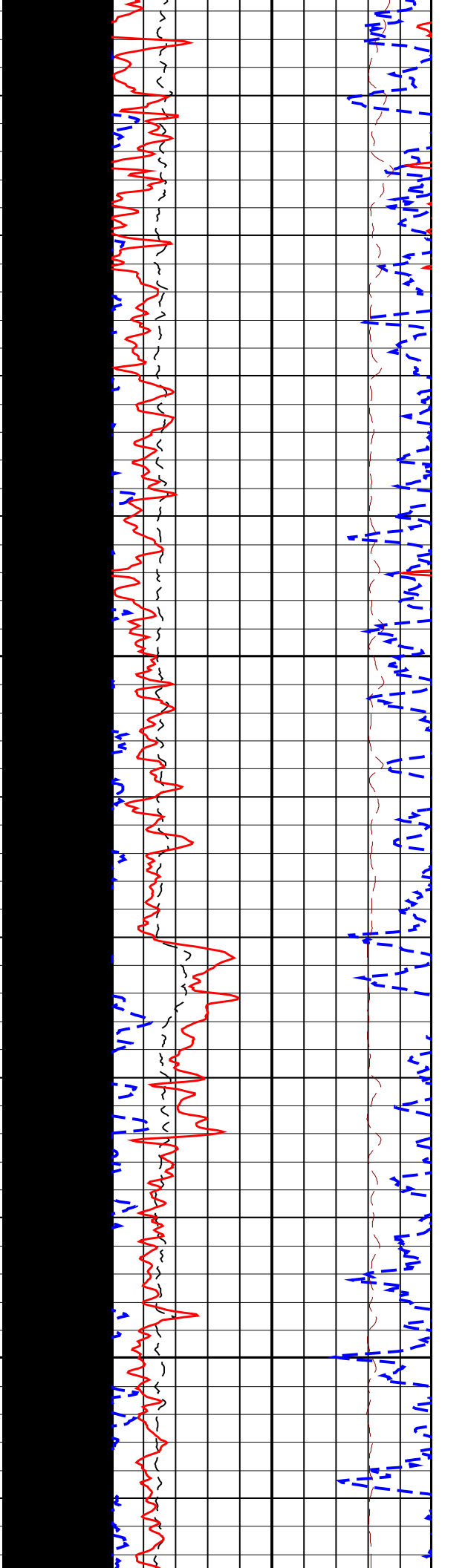
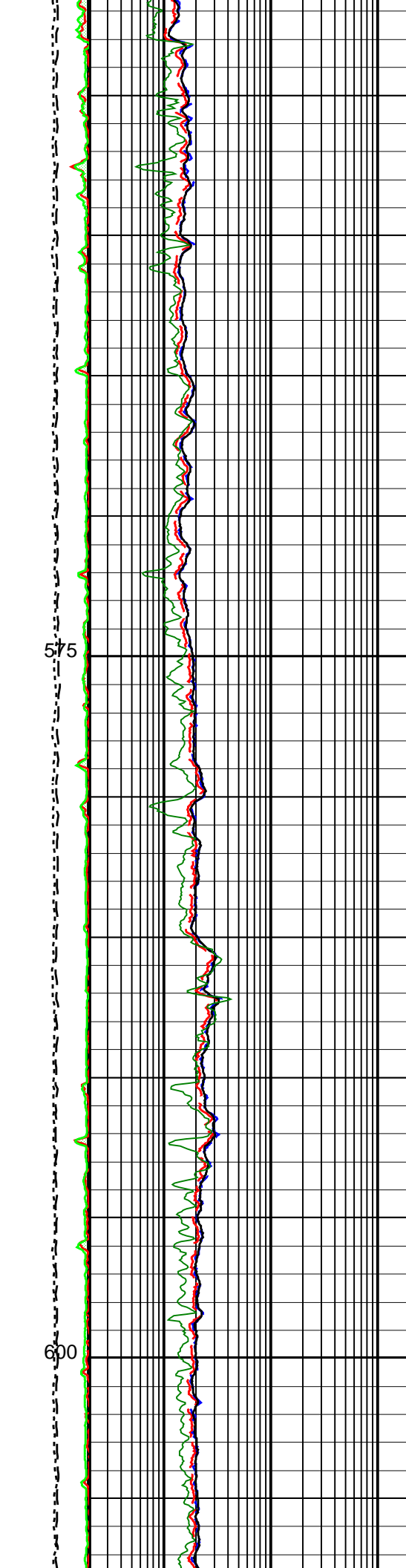
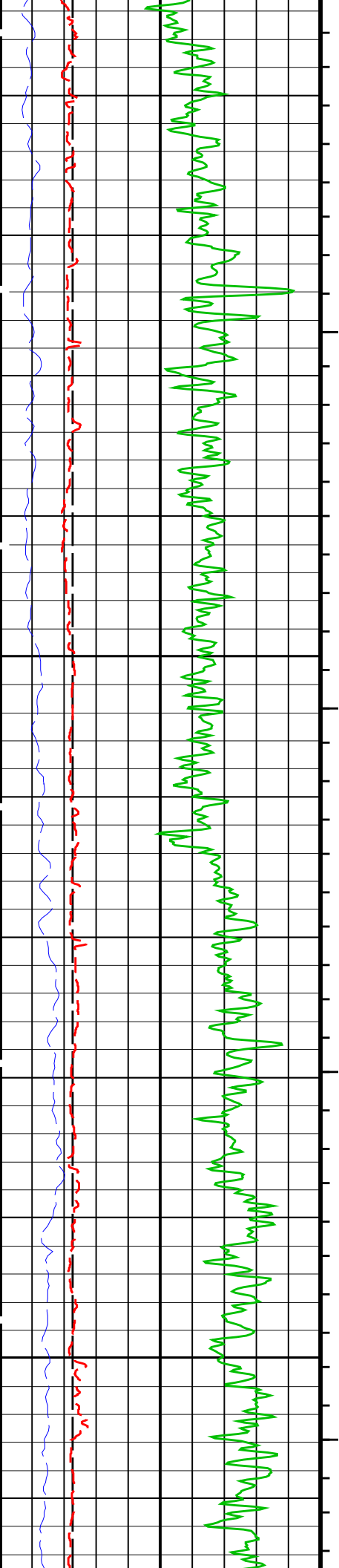




450

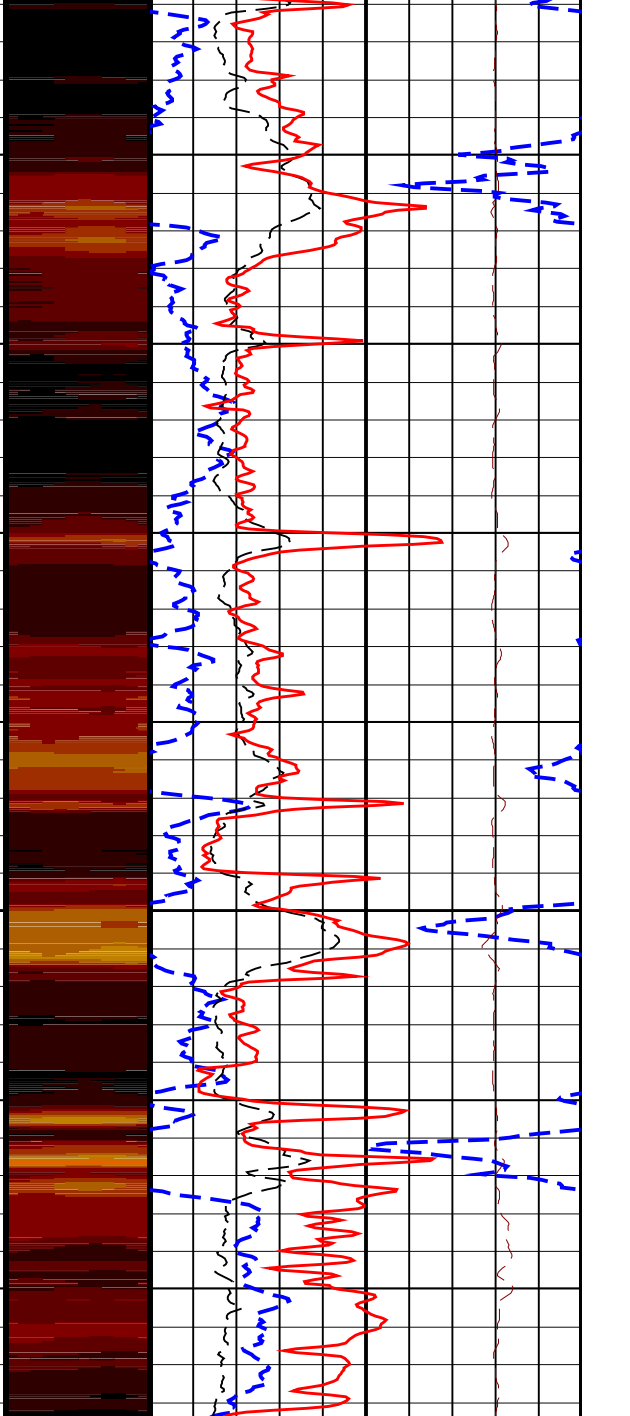
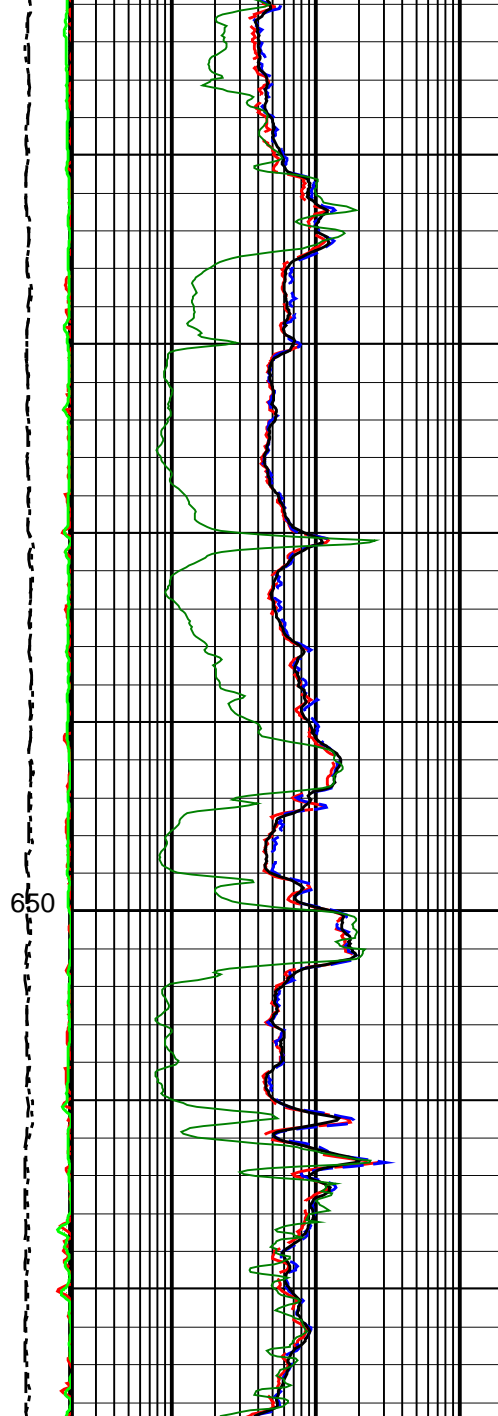
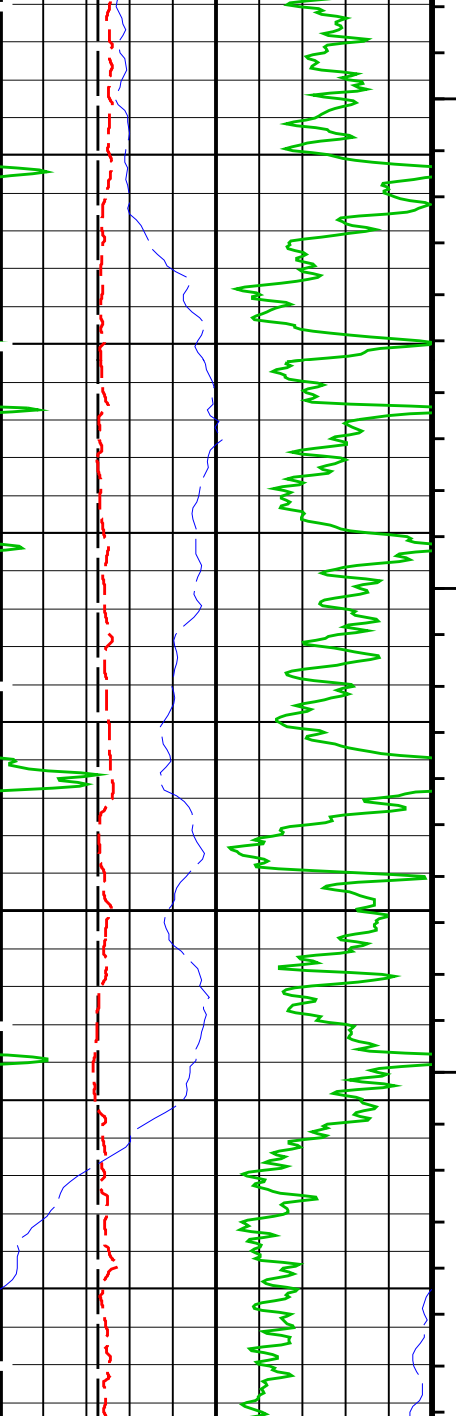
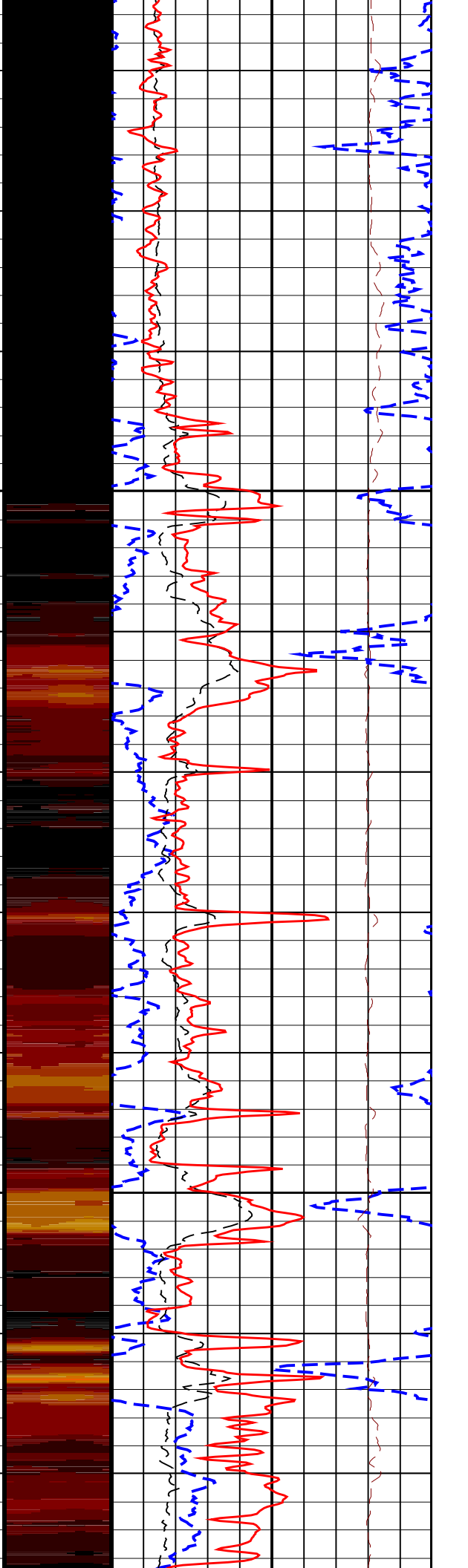
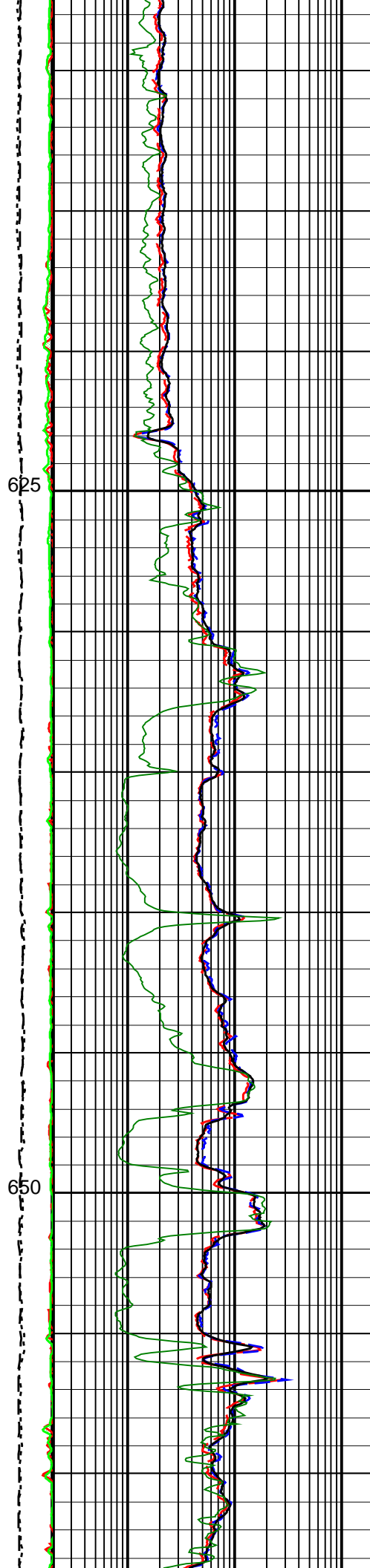
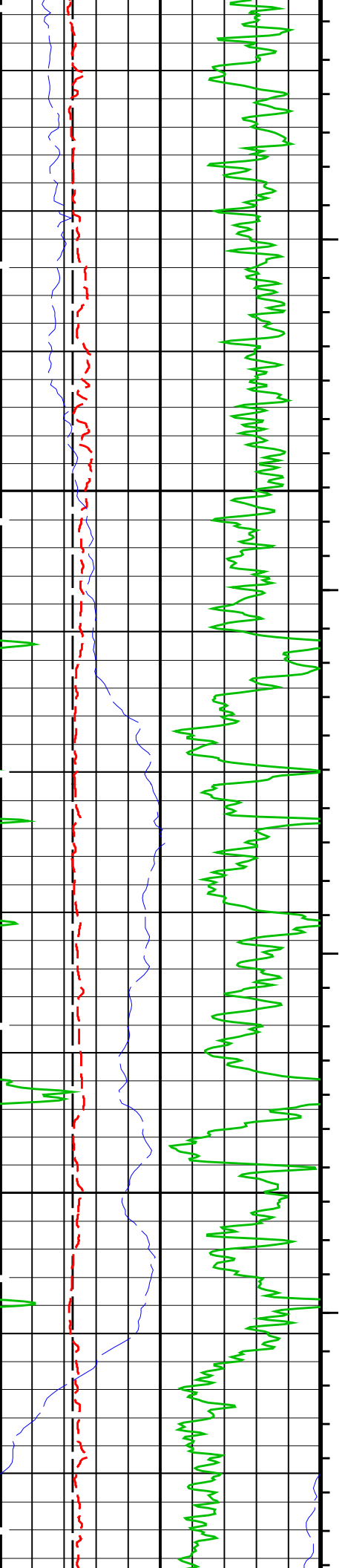
475



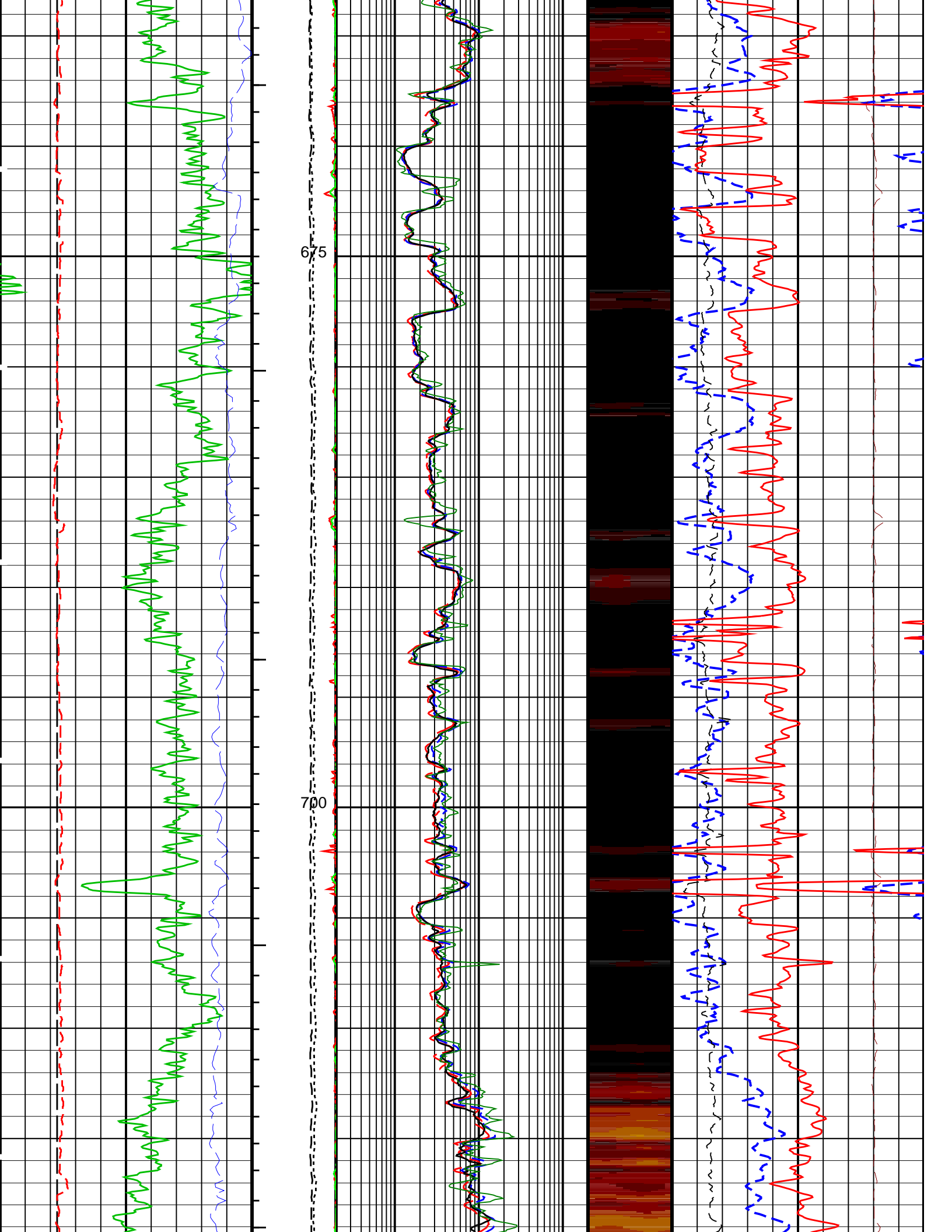


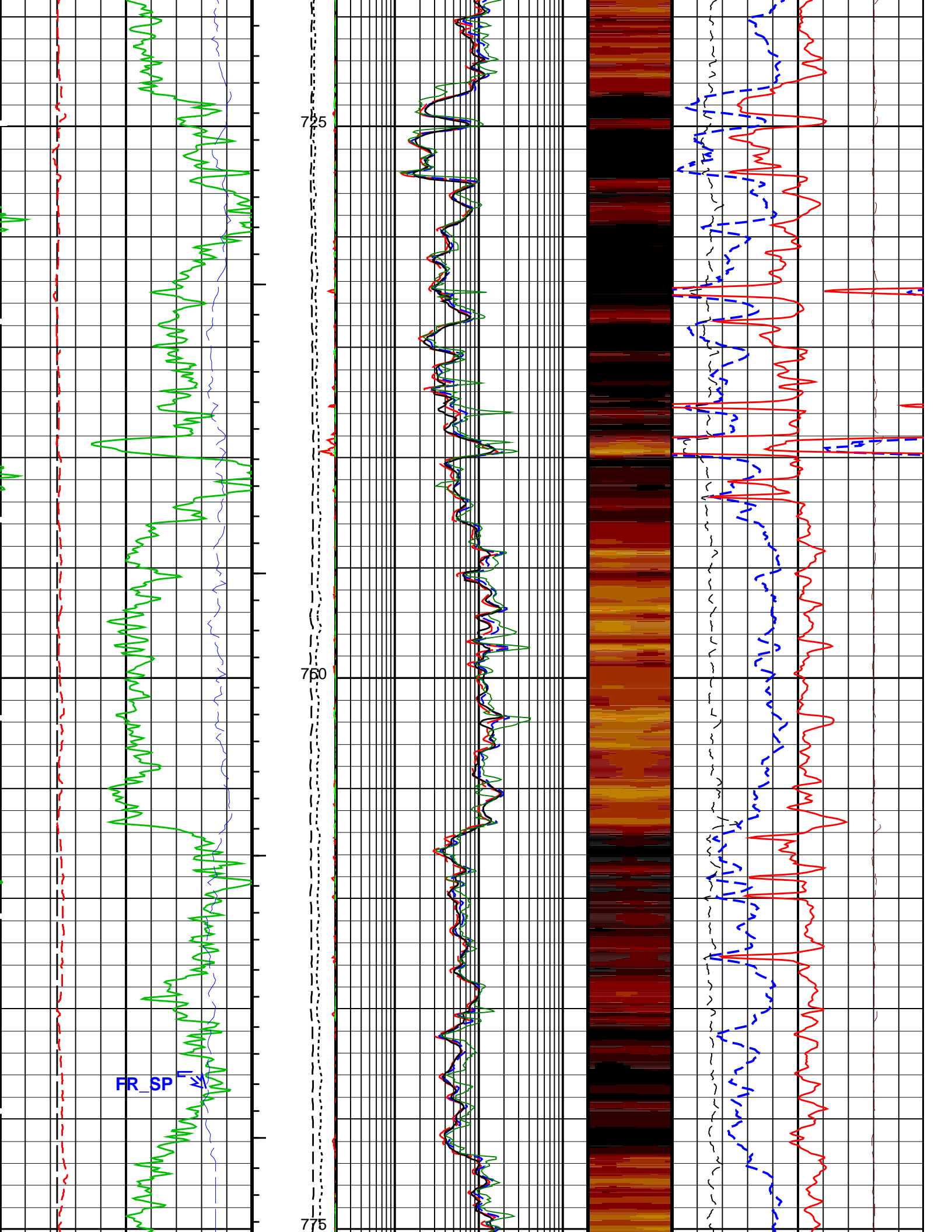
575

800









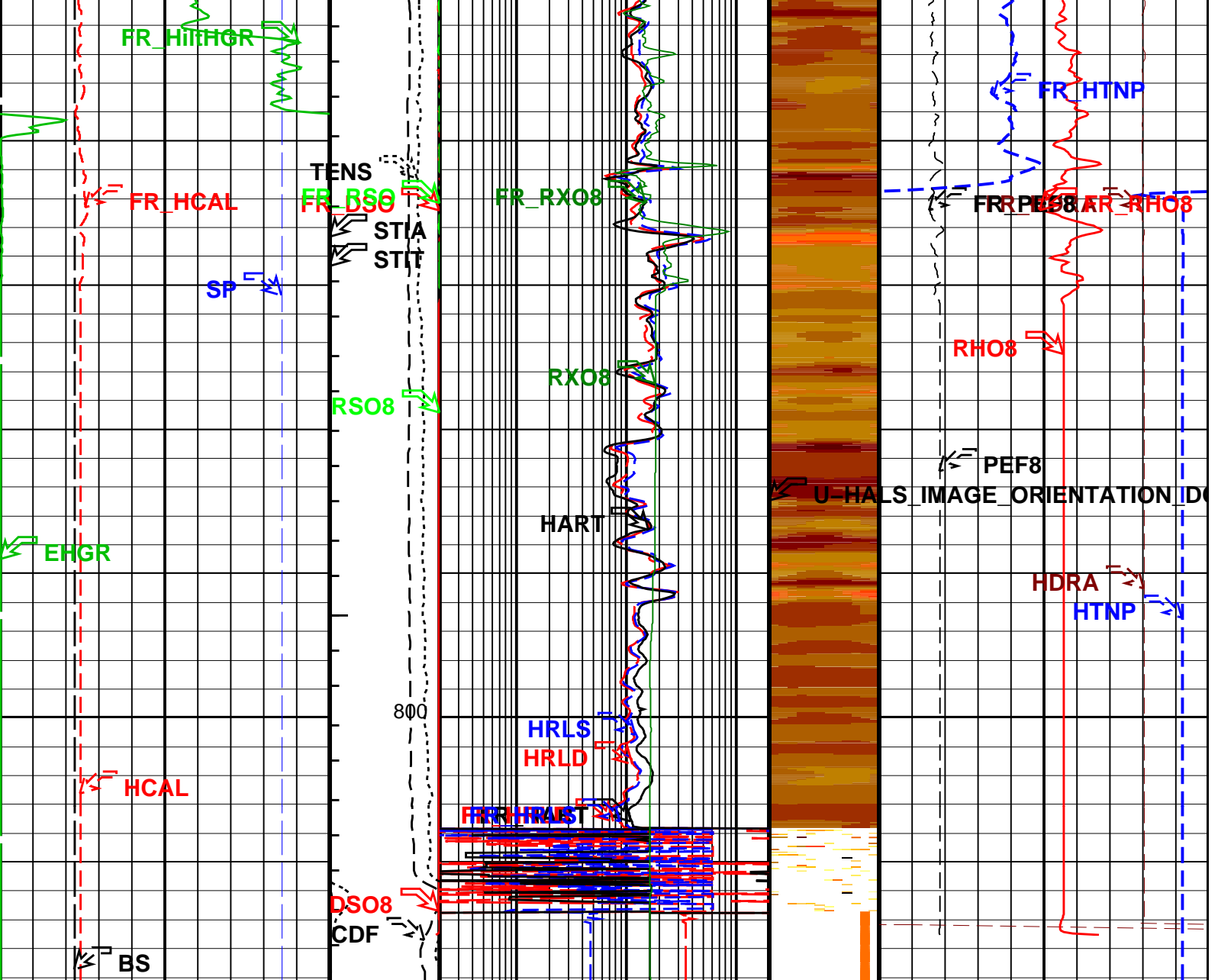
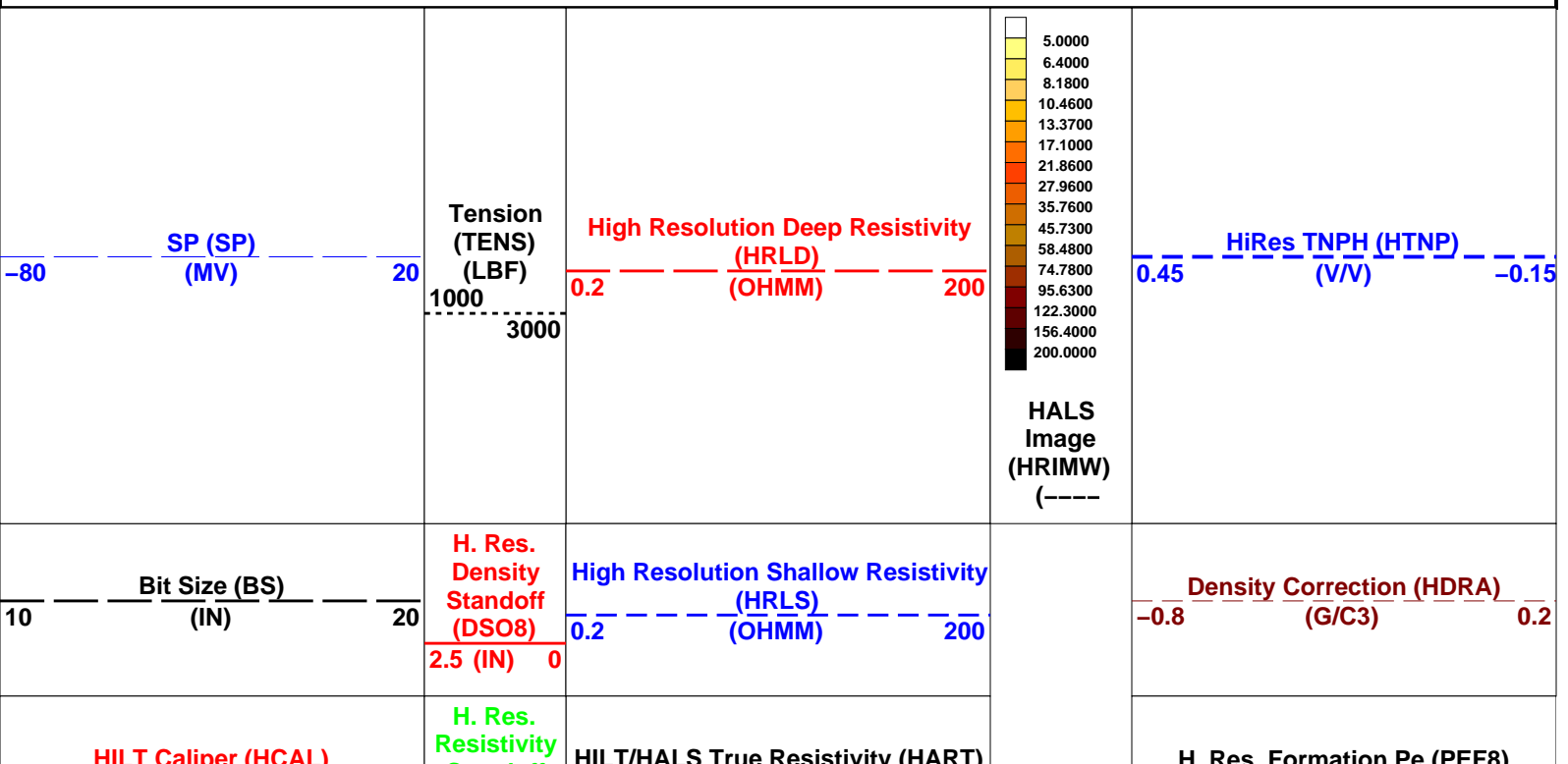


Image: Shallow Raw Conductivities (MMHO)



10	(IN)	20	Standoff (RSO8)	0.2	(OHMM)	200	0	(----	20
			2.5 (IN)	0					
	Gamma Ray (EHGR)		Calibrated Downhole Force (CDF) (LBF)		H. Res. Invaded Zone Resistivity (RXO8)			H. Res. Formation Density (RHO8)	
0	(GAPI)	150		0.2	(OHMM)	200	1.95	(G/C3)	2.95
			0	2000					

PIP SUMMARY

- └ Integrated Hole Volume Minor Pip Every 0.1 M3
- └ Integrated Hole Volume Major Pip Every 1 M3

Time Mark Every 60 S

Parameters

DLIS Name	Description	Value
HALS-B: HILT Azimuthal Laterolog Sonde B		
	HALS Type of Image	Conductivities
A2EX	HALS-B A2 OFFSETED (Groningen effect)	OFF
AGOS	HALS-GPIT OFFSET	-95.5 IN
ARIP_LTS	HALS Long Tool String Correction	OFF
ARIP_SHOULDER	HALS Shoulder Correction	OFF
BHCC	HALS Borehole Correction	ON
BHS	Borehole Status	OPEN
BHT	Bottom Hole Temperature (used in calculations)	43.3 DEGC
DHOP	Diameter & Eccentering used in HALS Borehole Corrections	Caliper_Eccentered
		HCAL
GCSE	Generalized Caliper Selection	0 DEG
GDEV	Average Angular Deviation of Borehole from Normal	0.018227 DC/M
GGRD	Geothermal Gradient	OFF
GRCC	HALS Groningen Correction	HALS_RESIST
GRSE	Generalized Mud Resistivity Selection	LINEAR_ESTIMATE
GTSE	Generalized Temperature Selection	LOW
HLAC	HALS-B Loop A Coefficient	STAN
HLMO	HALS Logging Mode	1.5 IN
HMSO	HALS Mechanical Standoff	NO
HRUN	HALS-B Record Uncalibrated Channels	OFF
IMOS	HALS Image Orientation	DeepRaw
LIMP	HALS Left Image Processing	OFF
LOP1	HALS-B Mode 1 Loop Mode	OFF
LOP2	HALS-B Mode 2 Loop Mode	OFF
LOP3	HALS-B Mode 3 Loop Mode	OFF
MATR	Rock Matrix for Neutron Porosity Corrections	LIMESTONE
RIMP	HALS Right Image Processing	ShallowRaw
RTCOMP	HALS Rt Computation	Hals_LowRes
RTRE	HALS Resistivity Threshold	100000 OHMM
SHT	Surface Hole Temperature	20 DEGC
SPCO	HALS-B Special Power Connection	OFF
TCOR	HALS TLC Correction	OFF
UNSPK	HALS Despiking Filter Option	OFF
UNSPK_THOLD	HALS Despiking Filter Threshold (in %)	20 %
UNSPK_WINDOW	HALS Despiking Filter Window (inches)	6 IN
DSST-B: Dipole Shear Imager - B		
AGC1	Automatic Gain Control 1	ON
AGC2	Automatic Gain Control 2	ON
AGC3	Automatic Gain Control 3	ON
AGC4	Automatic Gain Control 4	ON
AGC5	Automatic Gain Control 5	ON
AGCX	Automatic Gain Control X	ON
BARS_MTR1	Length for Monopole Transmitter to Receiver 1	2.7432 M
BHS	Borehole Status	OPEN
BHT	Bottom Hole Temperature (used in calculations)	43.3 DEGC
BILI	Bond Index Level for Zone Isolation	0.8
CASF	Label Casing Function - Monopole P&S	50
CDTS	C-Delta-T Shale	100 US/F
COLL	Label Slowness Lower Limit - Monopole P&S Compressional	40 US/F
COUL	Label Slowness Upper Limit - Monopole P&S Compressional	180 US/F
CSTR	Compressive Strength of Cement	0 KPAA
DDE1	Digitizing Delay 1	0 US
DDE2	Digitizing Delay 2	0 US
DDE3	Digitizing Delay 3	0 US
DDE4	Digitizing Delay 4	0 US
DDE5	Digitizing Delay 5	0 US
DDEX	Digitizing Delay X	0 US
DLCS	Label Compressional Source - Dipole Shear	USE
DLHS	Label Hole Diameter Source for SOBS Channel	HCAL
DSLH	Label Slowness Lower Limit - Dipole Shear	75 US/F
DSHU	Label Slowness Upper Limit - Dipole Shear	140 US/F

DSH0	Label Slowness Upper Limit - Dipole Shear	440	US/F
DSI1	Digitizer Sample Interval 1	40	US
DSI2	Digitizer Sample Interval 2	40	US
DSI3	Digitizer Sample Interval 3	40	US
DSI4	Digitizer Sample Interval 4	10	US
DSI5	Digitizer Sample Interval 5	10	US
DSIX	Digitizer Sample Interval X	40	US
DTCS	Compressional Delta-T Source for DTCO Channel	PS_COMP	
DTF	Delta-T Fluid	189	US/F
DTM	Delta-T Matrix	56	US/F
DTSS	Shear Delta-T Source for DTSM Channel	UPPER_DIPOLE	
DWC1	Digitizer Word Count 1	512	
DWC2	Digitizer Word Count 2	512	
DWC3	Digitizer Word Count 3	512	
DWC4	Digitizer Word Count 4	512	
DWC5	Digitizer Word Count 5	512	
DWCX	Digitizer Word Count X	512	
FCF	CBL Fluid Compensation Factor	1	
FDE1	Firing Delay 1	0	
FDE2	Firing Delay 2	0	
FDE3	Firing Delay 3	0	
FDE4	Firing Delay 4	0	
FDE5	Firing Delay 5	0	
FDEX	Firing Delay X	0	
FGM5	First Motion Gate Moveout 5	40	US/F
FGMX	First Motion Gate Moveout X	40	US/F
FILG	Label Fill Gap Control - Monopole P&S	COMP_SHEAR	
FMG5	First Motion Minimum Gate 5	500	US
FMGX	First Motion Minimum Gate X	500	US
FMLL	Slowness Lower Limit - FMD	40	US/F
FMRC	Restart Control - FMD	CONTINUE	
FMT5	First Motion Threshold 5	UP	
FMTX	First Motion Threshold X	NONE	
FMUL	Slowness Upper Limit - FMD	180	US/F
FNC5	First Motion Noise Counter Input 5	ALO	
FNCX	First Motion Noise Counter Input X	ALO	
FPM	Processing Mode - FMD	NONE	
FTD5	First Motion Threshold Direction 5	UP	
FTDX	First Motion Threshold Direction X	UP	
GAI1	Manual Gain 1	10	
GAI2	Manual Gain 2	10	
GAI3	Manual Gain 3	6	
GAI4	Manual Gain 4	16	
GAI5	Manual Gain 5	16	
GAIX	Manual Gain X	10	
GCSE	Generalized Caliper Selection	HCAL	
GDEV	Average Angular Deviation of Borehole from Normal	0	DEG
GDT1	Gain Delta-T 1	800	US/F
GDT2	Gain Delta-T 2	800	US/F
GDT3	Gain Delta-T 3	800	US/F
GDT4	Gain Delta-T 4	160	US/F
GDT5	Gain Delta-T 5	160	US/F
GDTX	Gain Delta-T X	800	US/F
GGRD	Geothermal Gradient	0.018227	DC/M
GIN1	Gain Interval 1	15360	US
GIN2	Gain Interval 2	15360	US
GIN3	Gain Interval 3	15360	US
GIN4	Gain Interval 4	2560	US
GIN5	Gain Interval 5	1600	US
GINX	Gain Interval X	15360	US
GOBO	Good Bond	2	MV
GRSE	Generalized Mud Resistivity Selection	HALS_RESIST	
GTSE	Generalized Temperature Selection	LINEAR_ESTIMATE	
HPF1	High Pass Filter 1	F80	
HPF2	High Pass Filter 2	F80	
HPF3	High Pass Filter 3	F80	
HPF4	High Pass Filter 4	F8K	
HPF5	High Pass Filter 5	F8K	
HPFX	High Pass Filter X	F80	
ITTS	Integrated Transit Time Source	DTCO	
LFC	Label Formation Character - Monopole P&S	DYNAMIC	
LPF1	Low Pass Filter 1	F5K	
LPF2	Low Pass Filter 2	F5K	
LPF3	Low Pass Filter 3	F5K	
LPF4	Low Pass Filter 4	F30K	
LPF5	Low Pass Filter 5	F30K	
LPFX	Low Pass Filter X	F5K	
LTXG	Lower Dipole Transmitter Geometry	156	IN
MAI5	Slowness Averaging Interval - FMD	42	IN
MATR	Rock Matrix for Neutron Porosity Corrections	LIMESTONE	
MCI	Minimum Cemented Interval for Isolation	6.60692	M
MCS	Mean Casing Slowness	57	US/F
MDS5	Multishot Delta-T Scatter - FMD	20	US
MSA	Minimum Sonic Amplitude	18.0518	MV
MTXG	Monopole Transmitter Geometry	186	IN

MUX1	Sum Difference Multiplexor Input 1	RR	
MUX2	Sum Difference Multiplexor Input 2	RR	
MUX3	Sum Difference Multiplexor Input 3	RR	
MUX4	Sum Difference Multiplexor Input 4	RR	
MUX5	Sum Difference Multiplexor Input 5	RR	
MUXX	Sum Difference Multiplexor Input X	RR	
NTI5	Number Threshold Items 5	0	
NTIX	Number Threshold Items X	0	
NWI1	Number Waveform Items 1	8	
NWI2	Number Waveform Items 2	8	
NWI3	Number Waveform Items 3	0	
NWI4	Number Waveform Items 4	8	
NWI5	Number Waveform Items 5	0	
NWIX	Number Waveform Items X	0	
NWS1	Number Waveforms Stacked 1	1	
NWS2	Number Waveforms Stacked 2	1	
NWS3	Number Waveforms Stacked 3	1	
NWS4	Number Waveforms Stacked 4	1	
NWS5	Number Waveforms Stacked 5	1	
NWSX	Number Waveforms Stacked X	1	
RATE	Firing Rate	R15	
RSMN	Label Shear/Compressional Minimum Ratio – Monopole P&S	1.4	
RSMX	Label Shear/Compressional Maximum Ratio – Monopole P&S	2.12	
RX1G	Receiver 1 Geometry	294	IN
RX2G	Receiver 2 Geometry	300	IN
RX3G	Receiver 3 Geometry	306	IN
RX4G	Receiver 4 Geometry	312	IN
RX5G	Receiver 5 Geometry	318	IN
RX6G	Receiver 6 Geometry	324	IN
RX7G	Receiver 7 Geometry	330	IN
RX8G	Receiver 8 Geometry	336	IN
SAM1	DSST Sonic Acquisition Mode 1 – Lower Dipole Mode	EVEN	
SAM2	DSST Sonic Acquisition Mode 2 – Upper Dipole Mode	ODD	
SAM3	DSST Sonic Acquisition Mode 3 – Low Frequency Monopole Mode for Stoneley	OFF	
SAM4	DSST Sonic Acquisition Mode 4 – High Frequency Monopole Mode for P&S	EVEN	
SAM5	DSST Sonic Acquisition Mode 5 – High Frequency Monopole Mode for FMD	OFF	
SAMX	DSST Sonic Acquisition Mode X – Both Dipoles or Monopole Mode for Expert	OFF	
SAS1	STC Sonic Array Status – Lower Dipole	255	
SAS2	STC Sonic Array Status – Upper Dipole	255	
SAS3	STC Sonic Array Status – Monopole Stoneley	255	
SAS4	STC Sonic Array Status – Monopole P&S	255	
SAS5	Sonic Array Status – FMD	255	
SBO1	STC Search Band Offset – Lower Dipole	3000	US
SBO2	STC Search Band Offset – Upper Dipole	3000	US
SBO3	STC Search Band Offset – Monopole Stoneley	3000	US
SBO4	STC Search Band Offset – Monopole P&S	500	US
SBR4	STC Baseline Removal – Monopole P&S	ON	
SBW1	STC Search Bandwidth – Lower Dipole	8000	US
SBW2	STC Search Bandwidth – Upper Dipole	8000	US
SBW3	STC Search Bandwidth – Monopole Stoneley	8000	US
SBW4	STC Search Bandwidth – Monopole P&S	2000	US
SFC1	STC Formation Character – Lower Dipole	SELECTABLE	
SFC2	STC Formation Character – Upper Dipole	SELECTABLE	
SFC3	STC Formation Character – Monopole Stoneley	SELECTABLE	
SFC4	STC Formation Character – Monopole P&S	SELECTABLE	
SFM1	STC Filter – Lower Dipole	B1-3K	
SFM2	STC Filter – Upper Dipole	B1-3K	
SFM3	STC Filter – Monopole Stoneley	B.5-1.5K	
SFM4	STC Filter – Monopole P&S	B3-20K	
SHLL	Label Slowness Lower Limit – Monopole P&S Shear	75	US/F
SHT	Surface Hole Temperature	20	DEGC
SHUL	Label Slowness Upper Limit – Monopole P&S Shear	180	US/F
SLL1	STC Slowness Lower Limit – Lower Dipole	75	US/F
SLL2	STC Slowness Lower Limit – Upper Dipole	75	US/F
SLL3	STC Slowness Lower Limit – Monopole Stoneley	180	US/F
SLL4	STC Slowness Lower Limit – Monopole P&S	40	US/F
SPFS	Sonic Porosity Formula	RAYMER_HUNT	
SPSO	Sonic Porosity Source	DTCO	
SST1	STC Slowness Step – Lower Dipole	4	US/F
SST2	STC Slowness Step – Upper Dipole	4	US/F
SST3	STC Slowness Step – Monopole Stoneley	4	US/F
SST4	STC Slowness Step – Monopole P&S	2	US/F
SSW1	STC Source Waveform – Lower Dipole	WF_SAM1	
SSW2	STC Source Waveform – Upper Dipole	WF_SAM2	
SSW3	STC Source Waveform – Monopole Stoneley	WF_SAM3	
SSW4	STC Source Waveform – Monopole P&S	WF_SAM4	
STLL	Label Slowness Lower Limit – Monopole Stoneley	180	US/F
STUL	Label Slowness Upper Limit – Monopole Stoneley	780	US/F
SUL1	STC Slowness Upper Limit – Lower Dipole	775	US/F
SUL2	STC Slowness Upper Limit – Upper Dipole	775	US/F
SUI3	STC Slowness Upper Limit – Monopole Stoneley	780	US/F

SUL4	STC Slowness Upper Limit - Monopole P&S	240	US/F
SWD1	STC Slowness Width - Lower Dipole	40	US/F
SWD2	STC Slowness Width - Upper Dipole	40	US/F
SWD3	STC Slowness Width - Monopole Stoneley	40	US/F
SWD4	STC Slowness Width - Monopole P&S	10	US/F
TBDB	Tool String Bottom to DSST Bottom	245.65	IN
TBF1	STC Time for Baseline Fill - Lower Dipole	0	US
TBF2	STC Time for Baseline Fill - Upper Dipole	0	US
TBF3	STC Time for Baseline Fill - Monopole Stoneley	0	US
TBF4	STC Time for Baseline Fill - Monopole P&S	300	US
TLL1	STC Time Lower Limit - Lower Dipole	600	US
TLL2	STC Time Lower Limit - Upper Dipole	600	US
TLL3	STC Time Lower Limit - Monopole Stoneley	600	US
TLL4	STC Time Lower Limit - Monopole P&S	150	US
TST1	STC Time Step - Lower Dipole	200	US
TST2	STC Time Step - Upper Dipole	200	US
TST3	STC Time Step - Monopole Stoneley	200	US
TST4	STC Time Step - Monopole P&S	50	US
TTDB	Tool String Top to DSST Bottom	1950.8	IN
TUL1	STC Time Upper Limit - Lower Dipole	15912.5	US
TUL2	STC Time Upper Limit - Upper Dipole	15525	US
TUL3	STC Time Upper Limit - Monopole Stoneley	12000	US
TUL4	STC Time Upper Limit - Monopole P&S	3660	US
TWA1	Transmitter Waveform Amplitude 1	179	
TWA2	Transmitter Waveform Amplitude 2	179	
TWA3	Transmitter Waveform Amplitude 3	166	
TWA4	Transmitter Waveform Amplitude 4	150	
TWA5	Transmitter Waveform Amplitude 5	150	
TWAX	Transmitter Waveform Amplitude X	179	
TWD1	STC Time Width - Lower Dipole	2000	US
TWD2	STC Time Width - Upper Dipole	2000	US
TWD3	STC Time Width - Monopole Stoneley	2000	US
TWD4	STC Time Width - Monopole P&S	1000	US
TWI1	STC Integration Time Window - Lower Dipole	1600	US
TWI2	STC Integration Time Window - Upper Dipole	1600	US
TWI3	STC Integration Time Window - Monopole Stoneley	2400	US
TWI4	STC Integration Time Window - Monopole P&S	500	US
TWR1	Transmitter Waveform Sample Rate 1	5	US
TWR2	Transmitter Waveform Sample Rate 2	5	US
TWR3	Transmitter Waveform Sample Rate 3	5	US
TWR4	Transmitter Waveform Sample Rate 4	5	US
TWR5	Transmitter Waveform Sample Rate 5	5	US
TWRX	Transmitter Waveform Sample Rate X	5	US
TWS1	Transmitter Waveform Select 1	0	
TWS2	Transmitter Waveform Select 2	0	
TWS3	Transmitter Waveform Select 3	4	
TWS4	Transmitter Waveform Select 4	6	
TWS5	Transmitter Waveform Select 5	6	
TWSX	Transmitter Waveform Select X	0	
UTXG	Upper Dipole Transmitter Geometry	162	IN
WFDTSP1	SAM1 Waveform Delta for Spectrum	0	US/F
WFDTSP2	SAM2 Waveform Delta for Spectrum	0	US/F
WFDTSP3	SAM3 Waveform Delta for Spectrum	0	US/F
WFDTSP4	SAM4 Waveform Delta for Spectrum	0	US/F
WFDTSPX	SAMX Waveform Delta for Spectrum	0	US/F
WFLSP1	SAM1 Waveform Lower Limit for Spectrum	0	US
WFLSP2	SAM2 Waveform Lower Limit for Spectrum	0	US
WFLSP3	SAM3 Waveform Lower Limit for Spectrum	0	US
WFLSP4	SAM4 Waveform Lower Limit for Spectrum	0	US
WFLSPX	SAMX Waveform Lower Limit for Spectrum	0	US
WFM1	Waveform Mode 1	W1	
WFM2	Waveform Mode 2	W1	
WFM3	Waveform Mode 3	W1	
WFM4	Waveform Mode 4	W1	
WFM5	Waveform Mode 5	W1	
WFMX	Waveform Mode X	W1	
WFULSP1	SAM1 Waveform Upper Limit for Spectrum	20000	US
WFULSP2	SAM2 Waveform Upper Limit for Spectrum	20000	US
WFULSP3	SAM3 Waveform Upper Limit for Spectrum	20000	US
WFULSP4	SAM4 Waveform Upper Limit for Spectrum	5000	US
WFULSPX	SAMX Waveform Upper Limit for Spectrum	20000	US
XMT1	Transmitter Select 1	DLO	
XMT2	Transmitter Select 2	DUP	
XMT3	Transmitter Select 3	MONO	
XMT4	Transmitter Select 4	MONO	
XMT5	Transmitter Select 5	MONO	
XMTX	Transmitter Select X	DUP	

**HILTB-FTB: High resolution Integrated Logging Tool-DTS**

BHFL	Borehole Fluid Type	WATER	
BHFL_TLD	HILT Nuclear Mud Base	WATER	
BHS	Borehole Status	OPEN	
BHT	Bottom Hole Temperature (used in calculations)	43.3	DEGC
BSCO	Borehole Salinity Correction Option	YES	
CCCO	Casing & Cement Thickness Correction Option	YES	
PSO	Pressure Correction Option	PS	

DHC	Density Hole Correction	BS	
DPPM	Density Porosity Processing Mode	HIRS	
EXSICL	External Shale Indicator Clean Value	20	
EXSISH	External Shale Indicator Shale Value	150	
FD	Fluid Density	1	G/C3
FEXP	Form Factor Exponent	2	
FNUM	Form Factor Numerator	1	
FPHI	Form Factor Porosity Source	DPHZ	
FSAL	Formation Salinity	-50000	PPM
FSCO	Formation Salinity Correction Option	NO	
GCSE	Generalized Caliper Selection	HCAL	
GDEV	Average Angular Deviation of Borehole from Normal	0	DEG
GGRD	Geothermal Gradient	0.018227	DC/M
GRSE	Generalized Mud Resistivity Selection	HALS_RESIST	
GTSE	Generalized Temperature Selection	LINEAR_ESTIMATE	
HACPP	Accelerometer PROM Presence	PRESENT_DOWNHOLE	
HART	Accelerometer Reference Temperature	20	DEGC
HDCOD	HILT Density Coal detection	2	G/C3
HDSAD	HILT Density Salt detection	2.1	G/C3
HILT_GAS_DENSITY	HILT Gas Downhole Density	0	G/C3
HILT_GAS_OPTION	HILT Gas Computation Option	OFF	
HNCOD	HILT Neutron Coal detection	45	PU
HNSAD	HILT Neutron Salt detection	5	PU
HPHIECUT	HILT effective Porosity Cutoff	5	PU
HSCO	Hole Size Correction Option	YES	
HSIS	HILT Shale Indicator Selection	GR	
HSWCUT	HILT Water Saturation from AITH cutoff	50	%
MATR	Rock Matrix for Neutron Porosity Corrections	LIMESTONE	
MCCO	Mud Cake Correction Option	YES	
MCOR	Mud Correction	NATU	
MDEN	Matrix Density	2.645	G/C3
MHC0	MCFL B0 Contrast Correction Coefficient	2.2e-005	OHMS
MHC1	MCFL B1 Contrast Correction Coefficient	3.2e-005	OHMS
MHCC	MCFL High Contrast Correction Switch	NO	
MPOF	MCFL Processing Operation Mode	ON	
MWCO	Mud Weight Correction Option	YES	
NAAC	HRDD APS Activation Correction	OFF	
NMT	HILT Nuclear Mud Type	NOBARITE	
NPRM	HRDD Processing Mode	HiRes	
NSAR	HRDD Depth Sampling Rate	1	IN
PHIMAX	HILT max porosity	35	PU
PTCO	Pressure/Temperature Correction Option	YES	
SDAT	Standoff Data Source	SOCN	
SEXP_HILT	HILT Saturation Exponent	2	
SHT	Surface Hole Temperature	20	DEGC
SOCN	Standoff Distance	0.125	IN
SOCO	Standoff Correction Option	NO	
	<b>BSP: Bridle SP</b>		
SPNV	SP Next Value	0	MV
	<b>ALLRES: Basic Resistivity Transforms</b>		
ARTS	AIT Rt Selection (for ALLRES computation)	AIT_TwoResA60	
BHS	Borehole Status	OPEN	
BHT	Bottom Hole Temperature (used in calculations)	43.3	DEGC
GCSE	Generalized Caliper Selection	HCAL	
GDEV	Average Angular Deviation of Borehole from Normal	0	DEG
GGRD	Geothermal Gradient	0.018227	DC/M
GRSE	Generalized Mud Resistivity Selection	HALS_RESIST	
GTSE	Generalized Temperature Selection	LINEAR_ESTIMATE	
MATR	Rock Matrix for Neutron Porosity Corrections	LIMESTONE	
RTCO	RTCO - Rt Invasion Correction	YES	
SHT	Surface Hole Temperature	20	DEGC
	<b>HOLEV: Integrated Hole/Cement Volume</b>		
BHS	Borehole Status	OPEN	
BHT	Bottom Hole Temperature (used in calculations)	43.3	DEGC
FCD	Future Casing (Outer) Diameter	0	IN
GCSE	Generalized Caliper Selection	HCAL	
GDEV	Average Angular Deviation of Borehole from Normal	0	DEG
GGRD	Geothermal Gradient	0.018227	DC/M
GRSE	Generalized Mud Resistivity Selection	HALS_RESIST	
GTSE	Generalized Temperature Selection	LINEAR_ESTIMATE	
HVCS	Integrated Hole Volume Caliper Selection	HCAL	
MATR	Rock Matrix for Neutron Porosity Corrections	LIMESTONE	
SHT	Surface Hole Temperature	20	DEGC
	<b>STI: Stuck Tool Indicator</b>		
LBFR	Trigger for MAXIS First Reading Label	TDL	
STKT	STI Stuck Threshold	0.762	M
TDD	Total Depth - Driller	810.00	M
TDL	Total Depth - Logger	806.00	M
	<b>System and Miscellaneous</b>		
ALTDPCCHAN	Name of alternate depth channel	SpeedCorrectedDepth	
BS	Bit Size	12.250	IN
BSAL	Borehole Salinity	54450.00	PPM
CSIZ	Current Casing Size	13.375	IN
CWEI	Casing Weight	68.50	LB/F
DFD	Drilling Fluid Density	1.06	G/C3



DO	Depth Offset for Playback	0.0	M
MST	Mud Sample Temperature	30.00	DEGC
PBVSADP	Use alternate depth channel for playback	NO	
PP	Playback Processing	NORMAL	
RMFS	Resistivity of Mud Filtrate Sample	0.1110	OHMM
RW	Resistivity of Connate Water	1.0000	OHMM
TD	Total Depth	-50000	M
TWS	Temperature of Connate Water Sample	37.78	DEGC

Format: Combo\_HighRes\_200      Vertical Scale: 1:200      Graphics File Created: 10-Oct-2005 12:30

### OP System Version: 13C0-300

MCM

HALS-B	SRPC-2788-HILT_b	DSST-B	13C0-300
HILTB-FTB	SRPC-2788-HILT_b	DTC-H	13C0-300
BSP	13C0-300		

### Input DLIS Files

DEFAULT	HALS_DSI_TLD_MCFL_073PUP	FN:76	PRODUCER	10-Oct-2005 12:02	809.1 M	71.3 M
---------	--------------------------	-------	----------	-------------------	---------	--------

### Output DLIS Files

DEFAULT	HALS_DSI_TLD_MCFL_075PUP	FN:80	PRODUCER	10-Oct-2005 12:30
RT	HALS_DSI_TLD_MCFL_075PUP	FN:81	PRODUCER	10-Oct-2005 12:30