



# FORMATION EVALUATION LOG

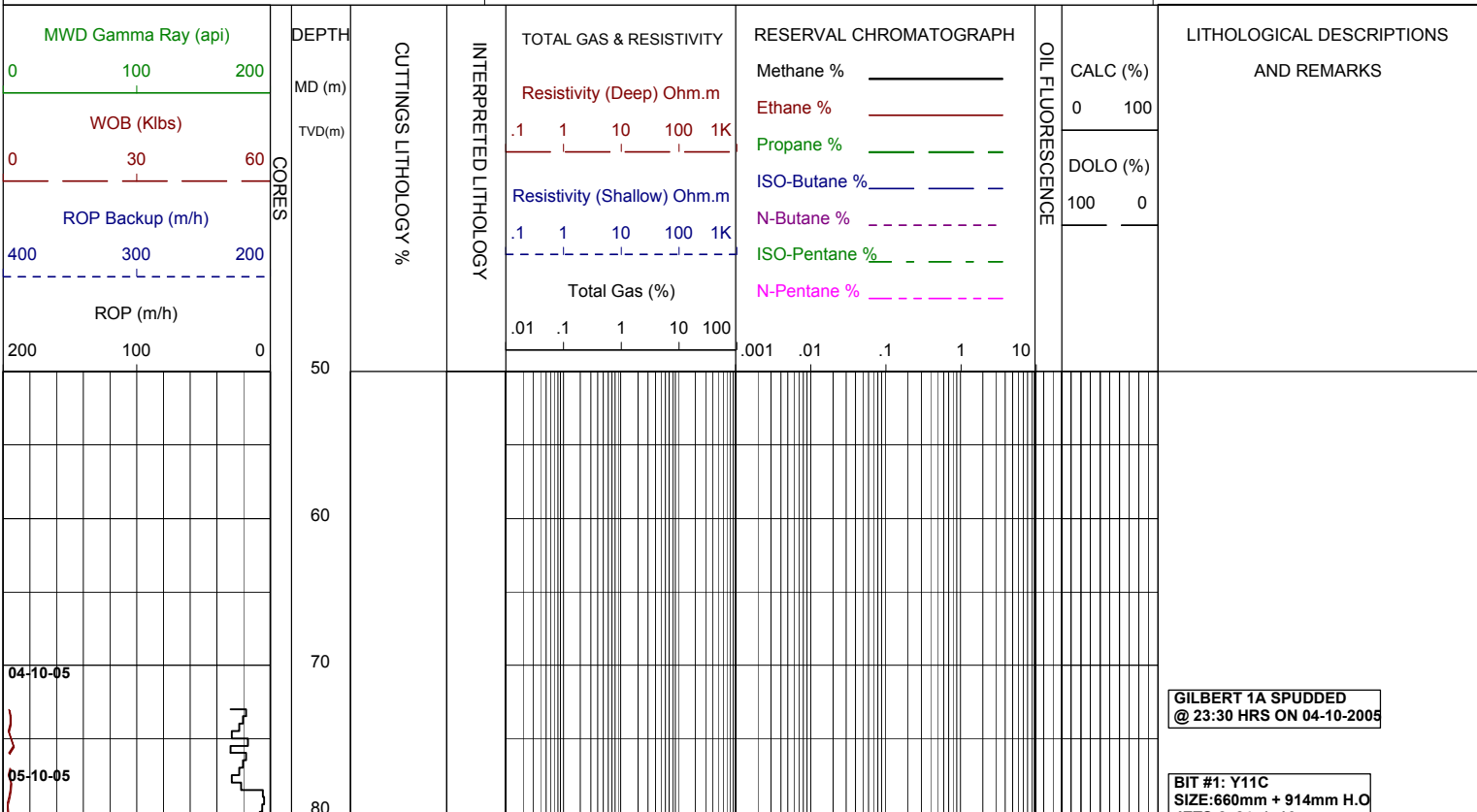


WELL : GILBERT 1A

FROM (m): 50 TO (m): 210 SCALE: 1/ 500

<b>Country</b> : AUSTRALIA <b>Region</b> : VICTORIA <b>Field</b> : <b>Permit</b> : VIC/P-47 <b>Well Type</b> : VERTICAL EXPLORATION <b>Rig Name</b> : OCEAN PATRIOT	<b>POSITION</b> <b>Latitude</b> : 37°57'10.72"S <b>Longitude</b> : 148°22'25.90"E <b>X (m)</b> : 5,798,512.1 mN <b>Y (m)</b> : 620,701.1 mE <b>RT-MSL (m)</b> : 21.5 <b>RT-Seabed (m)</b> : 72.8	<b>CASING</b> 508mm Shoe at (mMDRT) : 106m 244mm Shoe at (mMDRT) :	<b>Spud Date</b> : 04-10-2005 <b>Total Depth Date</b> : <b>Total Depth (mRT)</b> : <b>T.V.D. (mSS MSL)</b> : <b>Status</b> : P & A
--	--	--	--

ABBREVIATIONS	LITHOLOGY LEGEND	ENGINEERING LEGEND	
MW MUD WEIGHT FV FUNNEL VISCOSITY PV PLASTIC VISCOSITY YP YIELD POINT FC FILTER CAKE WL FILTRATE SD SAND - % S SALINITY - PPM RM MUD RESISTIVITY RMF MUD FILTRATE C CARBIDE TEST LAT LOGGED AFTER TRIP DS DEVIATION SURVEY	NB NEW BIT RR RERUN BIT CB CORE BIT WOB WEIGHT ON BIT RPM REVS PER MINUTE FLC FLOW CHECK CR CIRCULATE RETURNS PR POOR RETURNS NR NO RETURNS BG BACKGROUND GAS TG TRIP GAS STG SHORT TRIP GAS CG CONNECTION GAS SG SWAB GAS SVG SURVEY GAS	Limestone Med Sandstone Fine Sandstone Siltstone Claystone Calcarenite Calcisiltite Calcilutite Anhydrite Coal Marl Dolomite Carb. Siltstone Calc Claystone Lithic frag Foraminifera Pyrite Glauconite Mica Ferrous Fossils Calcareous Dolomitic Chert	Deviation Survey Casing Shoe Wiper Trip SWC (rec) SWC (unrec) Core Bit Trip



GILBERT 1A SPUNDED @ 23:30 HRS ON 04-10-2005

BIT #1: Y11C  
SIZE: 660mm + 914mm H.O

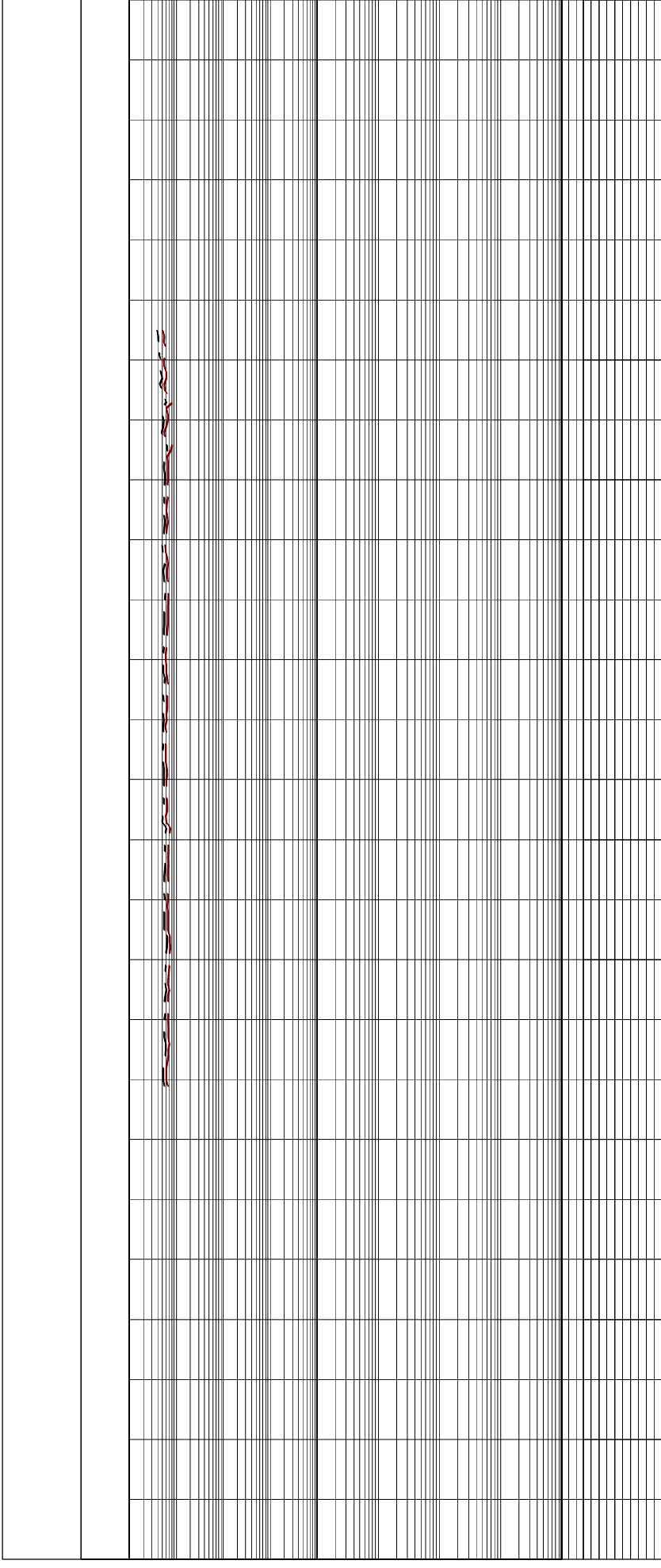
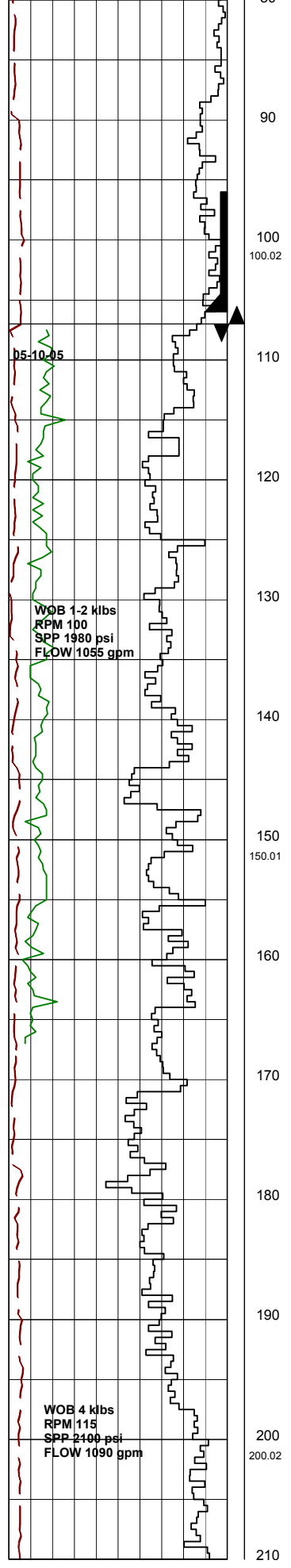
JETS:2x24, 1x16  
IN: 72.8m OUT:107m  
RUN: 34m HRS: 3.5

DRILL WITH SEA WATER  
RETURNS TO SEABED

508mm (20") Casing Shoe  
set @ 106 mMDRT

BIT #2: REED T11  
SIZE: 445mm (17.5")  
JETS: 3x22, 1x16  
IN: 107m OUT: m  
RUN: m HRS:

DRILL WITH SEA WATER  
RETURNS TO SEABED



JETS:2x24, 1x16  
IN: 72.8m OUT:107m  
RUN: 34m HRS: 3.5

