



# DRILLING DATA PLOT

WELL : GILBERT 1A



FROM (m): 50 TO (m): 820 SCALE: 1/ 500

Country : AUSTRALIA  
 Region : VICTORIA  
 Field :  
 Permit : VIC/P-47  
 Well Type : VERTICAL EXPLORATION  
 Rig Name : OCEAN PATRIOT

**POSITION**  
 Latitude : 37°57'10.72"S  
 Longitude : 148°22'25.90"E  
 X (m) : 5,798,512.1 mN  
 Y (m) : 620,701.1 mE  
 RT-LAT (m) : 21.5  
 RT-Seabed (m) : 72.8

**CASING**  
 508mm Shoe at (mMDRT) : 106m  
 340mm Shoe at (mMDRT) : 331m

Spud Date : 04-10-2005  
 Total Depth Date :  
 Total Depth (mRT) :  
 T.V.D. (mSSLAT) :  
 Status : P & A

### ABBREVIATIONS

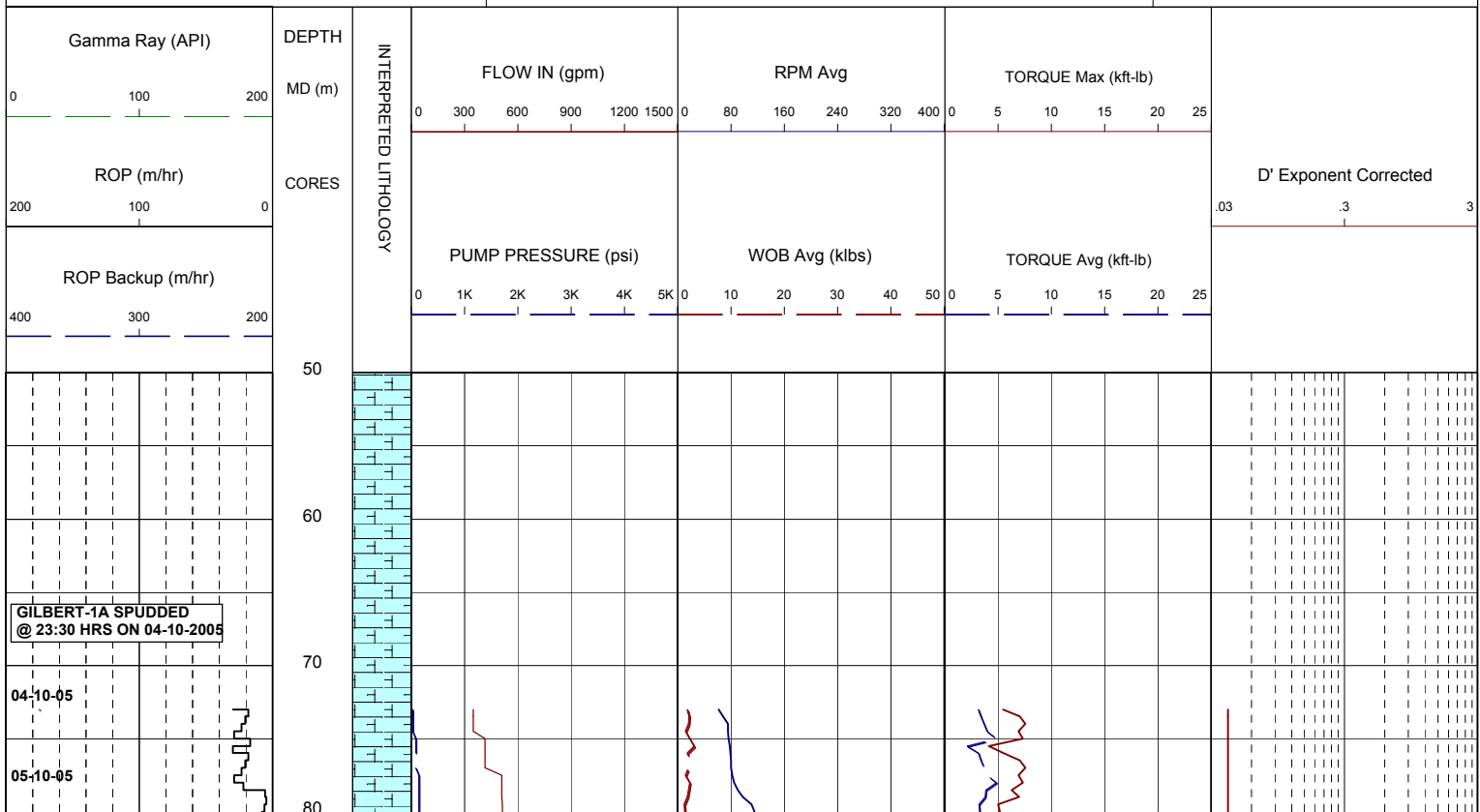
MW MUD WEIGHT	NB NEW BIT
FV FUNNEL VISCOSITY	RR RERUN BIT
PV PLASTIC VISCOSITY	CB CORE BIT
YP YIELD POINT	WOB WEIGHT ON BIT
FC FILTER CAKE	RPM REVS PER MINUTE
SOL SOLIDS	FLC FLOW CHECK
WL FILTRATE	CR CIRCULATE RETURNS
SD SAND - %	PR POOR RETURNS
S SALINITY - PPM	NR NO RETURNS
RM MUD RESISTIVITY	BG BACKGROUND GAS
RMF MUD FILTRATE	TG TRIP GAS
C CARBIDE TEST	STG SHORT TRIP GAS
LAT LOGGED AFTER TRIP	CG CONNECTION GAS
DS DEVIATION SURVEY	SG SWAB GAS
	SVG SURVEY GAS

### LITHOLOGY LEGEND

Limestone	Anhydrite	Pyrite
Med Sandstone	Coal	Glauconite
Fine Sandstone	Marl	Mica
Siltstone	Dolomite	Ferrous
Claystone	Carb. Siltstone	Fossils
Calcarenite	Calc Claystone	Calcareous
Calcsiltite	Lithic frag	Dolomitic
Calcilitite		Chert

### ENGINEERING LEGEND

	Deviation Survey
	Casing Shoe
	Wiper Trip
	SWC (rec)
	SWC (unrec)
	Core
	Bit Trip

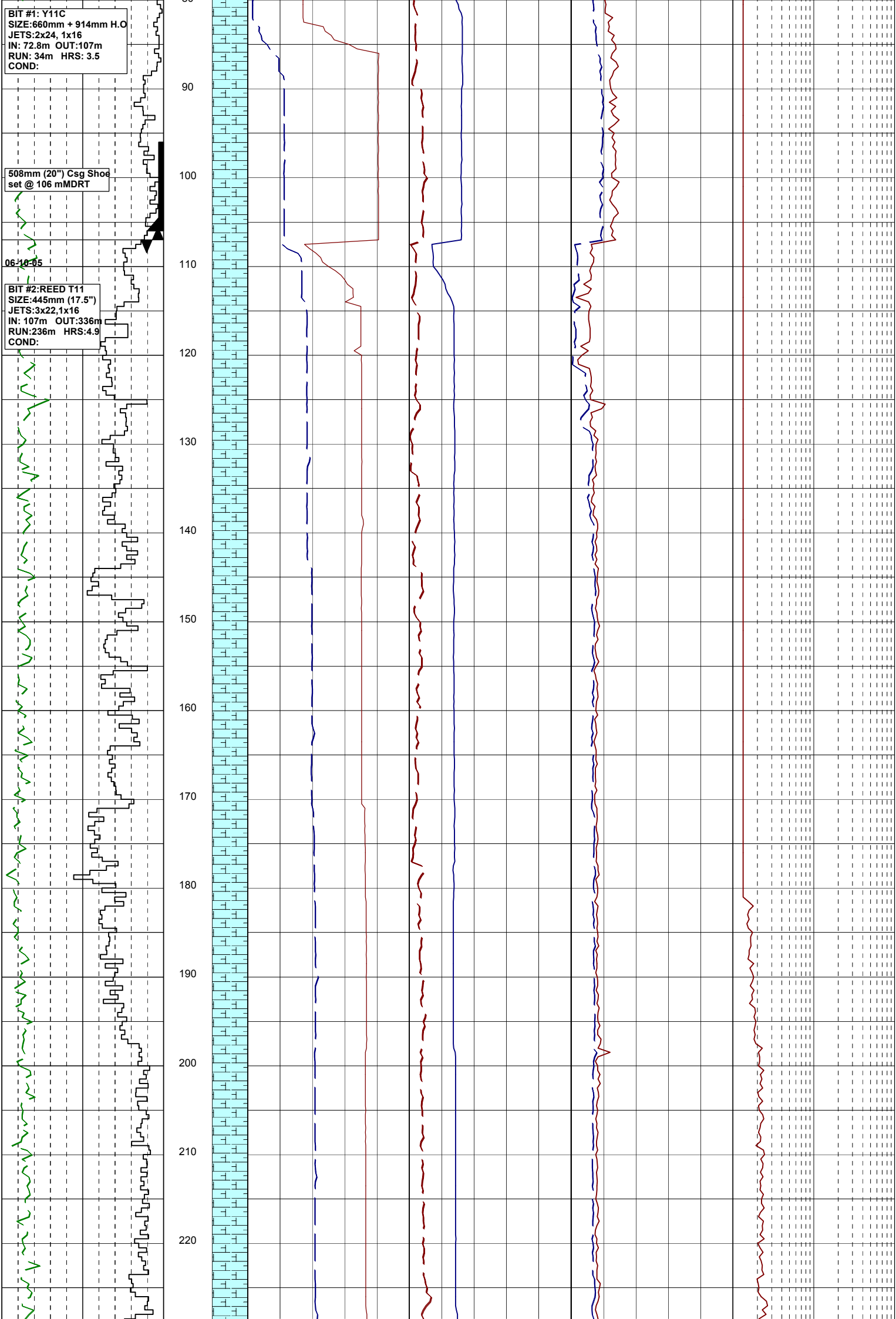


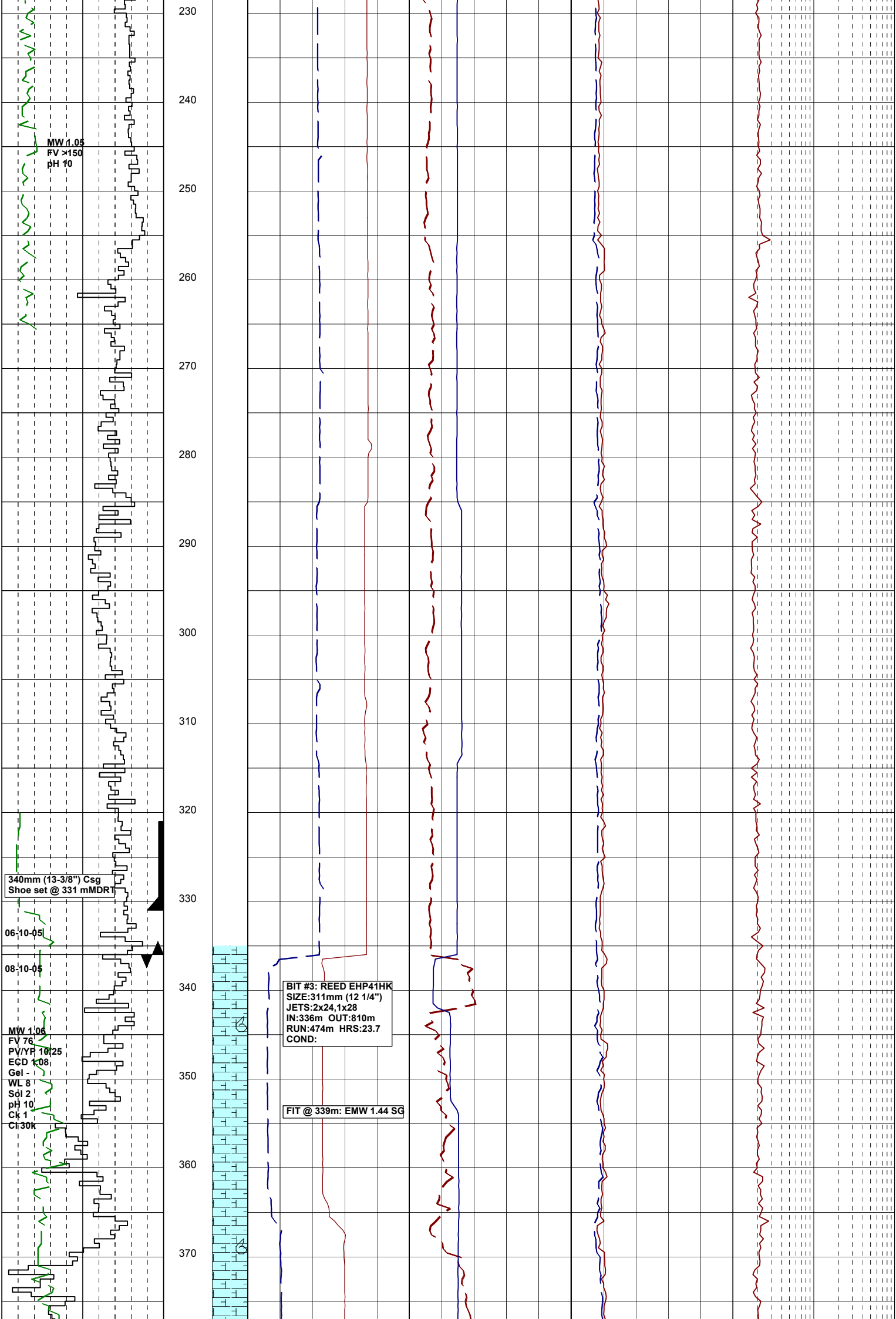
BIT #1: Y11C  
SIZE:660mm + 914mm H.O  
JETS:2x24, 1x16  
IN: 72.8m OUT:107m  
RUN: 34m HRS: 3.5  
COND:

508mm (20") Csg Shoe  
set @ 106 mMDRT

06-18-05

BIT #2: REED T11  
SIZE:445mm (17.5")  
JETS:3x22, 1x16  
IN: 107m OUT:336m  
RUN:236m HRS:4.9  
COND:





MW 1.05  
FV >150  
pH 10

340mm (13-3/8") Csg  
Shoe set @ 331 mMDRT

06-10-05

08-10-05

MW 1.05  
FV 76  
PV/YP 10/25  
EGD 1.08  
Gel -  
WL 8  
Sol 2  
pH 10  
Ck 1  
Cl 30k

BIT #3: REED EHP41HK  
SIZE:311mm (12 1/4")  
JETS:2x24.1x28  
IN:336m OUT:810m  
RUN:474m HRS:23.7  
COND:

FIT @ 339m: EMW 1.44 SQ

