

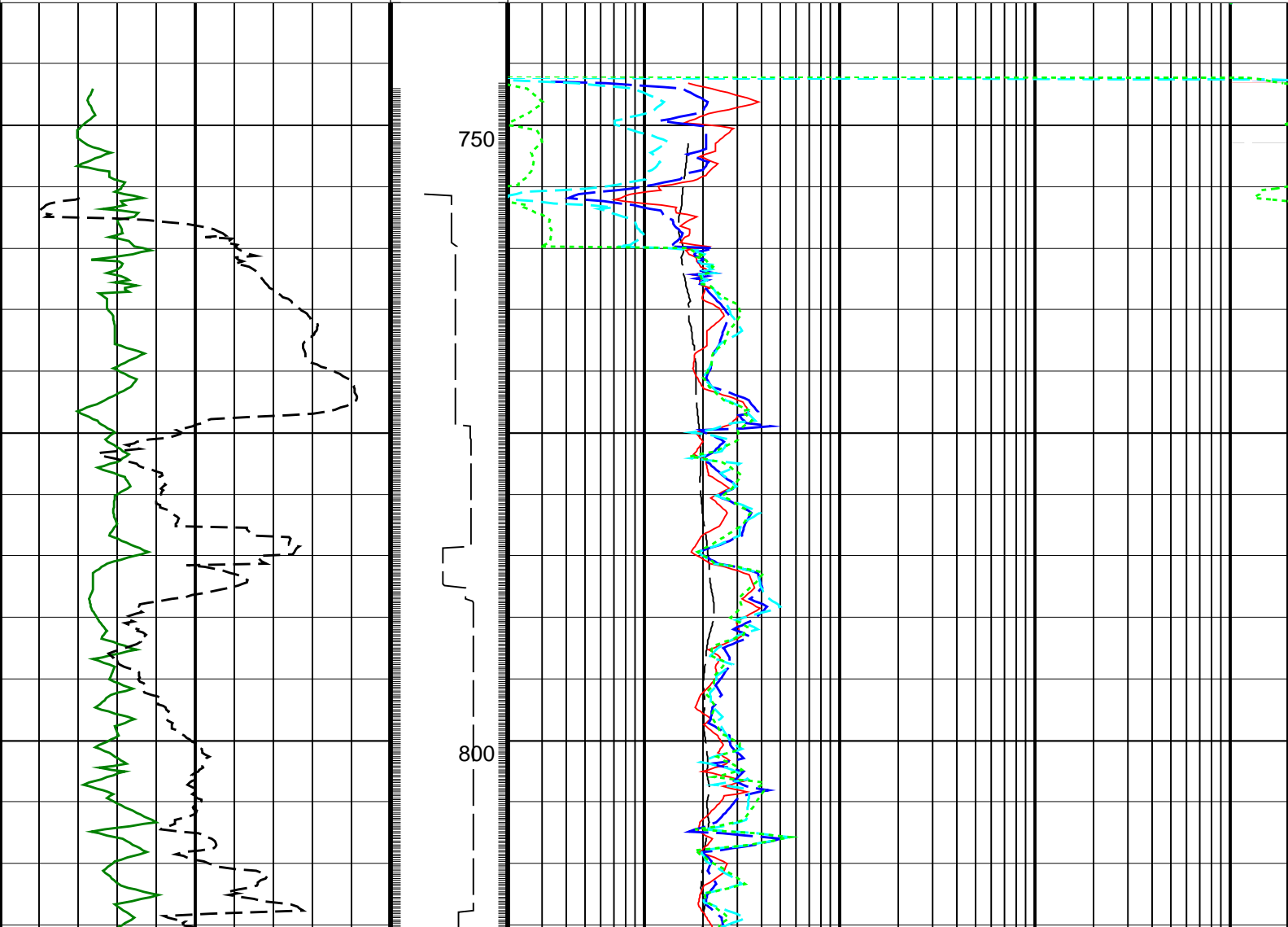
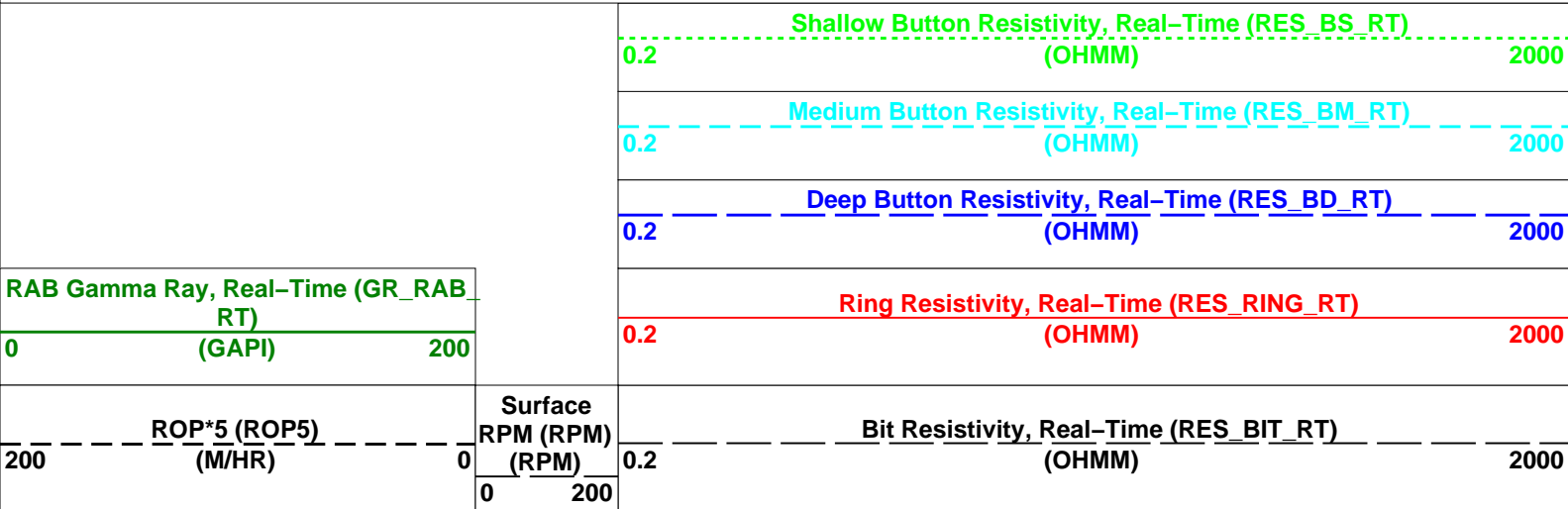
# GVR 1:500MD 740–2495mMD

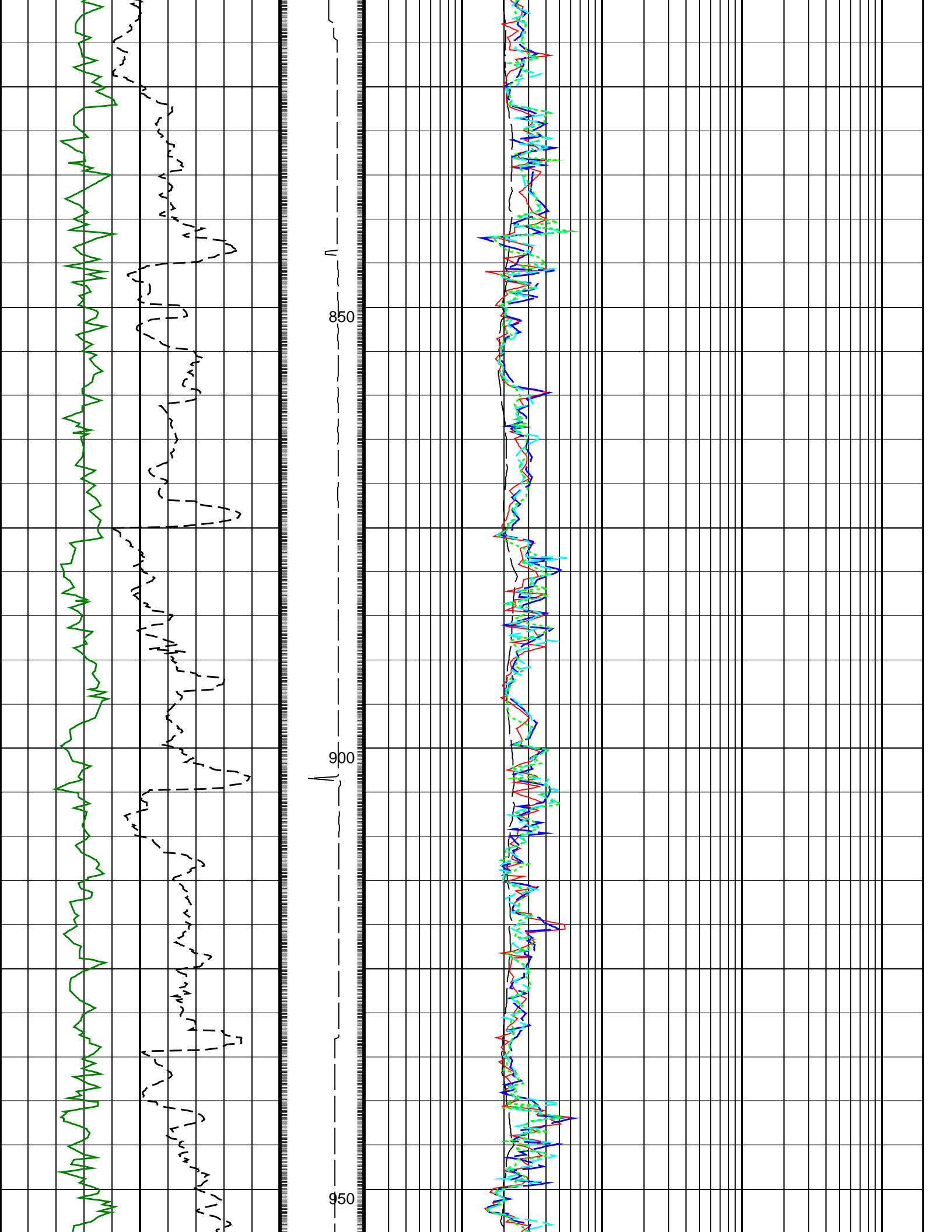
IDEAL Version: ID13\_OC\_08 <MD > Vertical Scale: 1:500

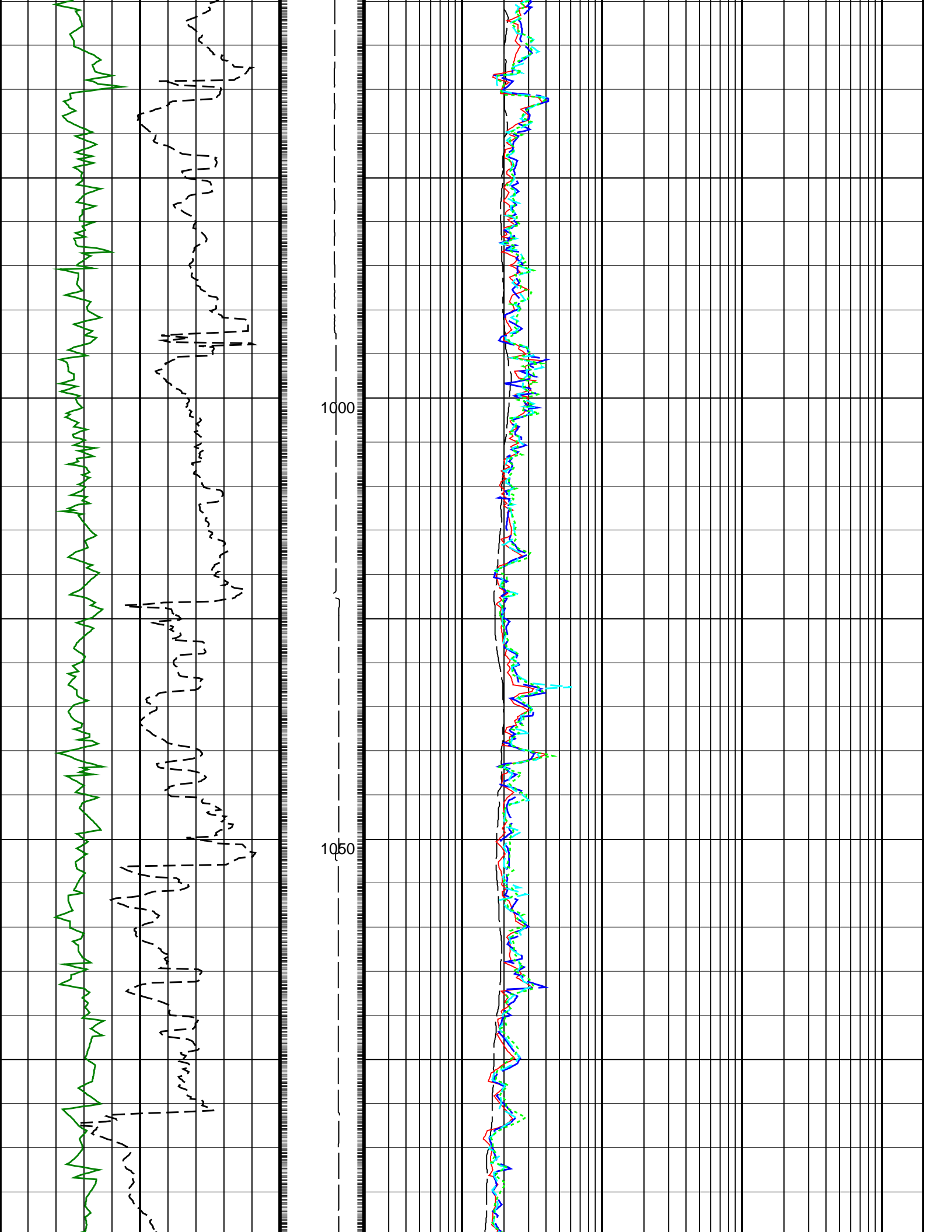
Graphics File Created: 12-Jun-2008 04:54

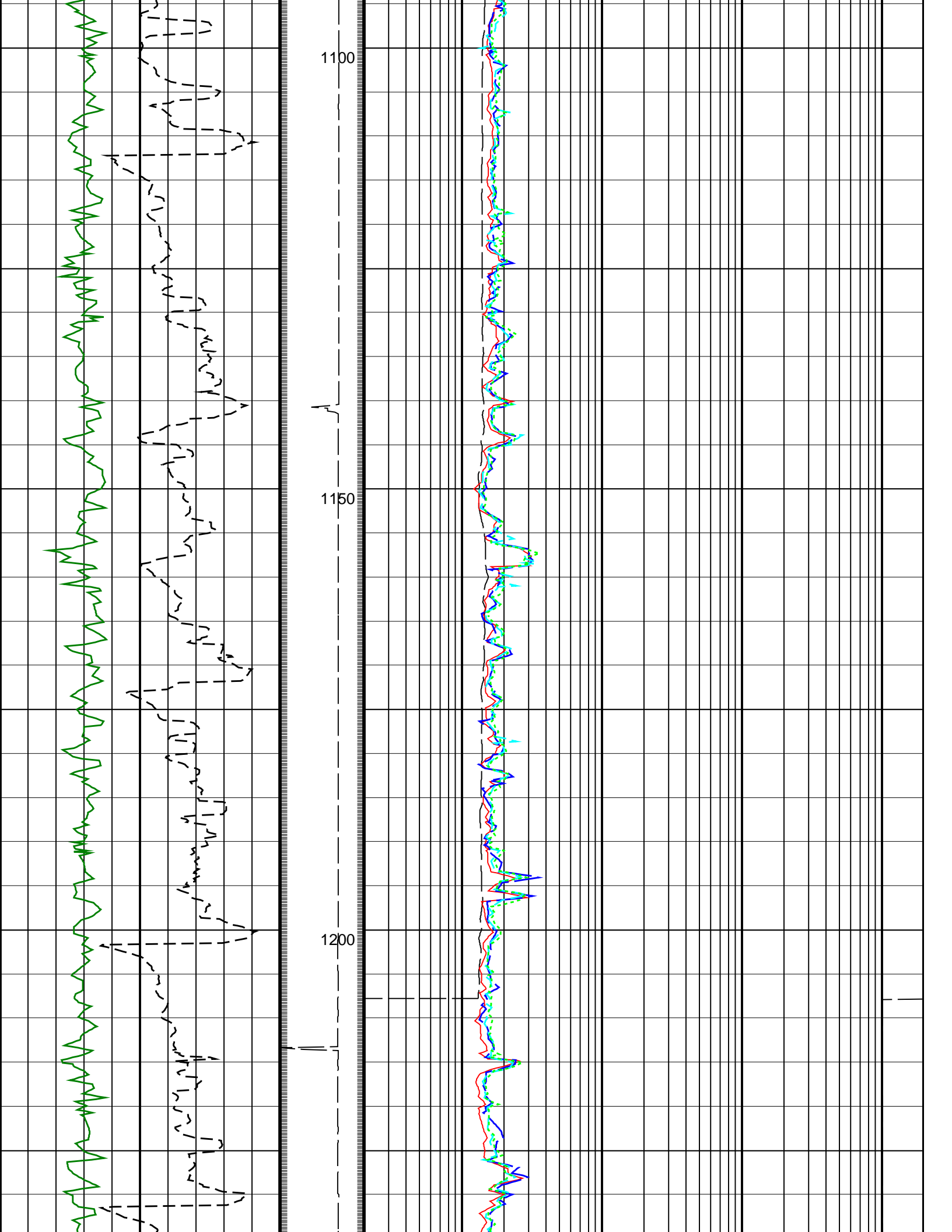
PIP SUMMARY

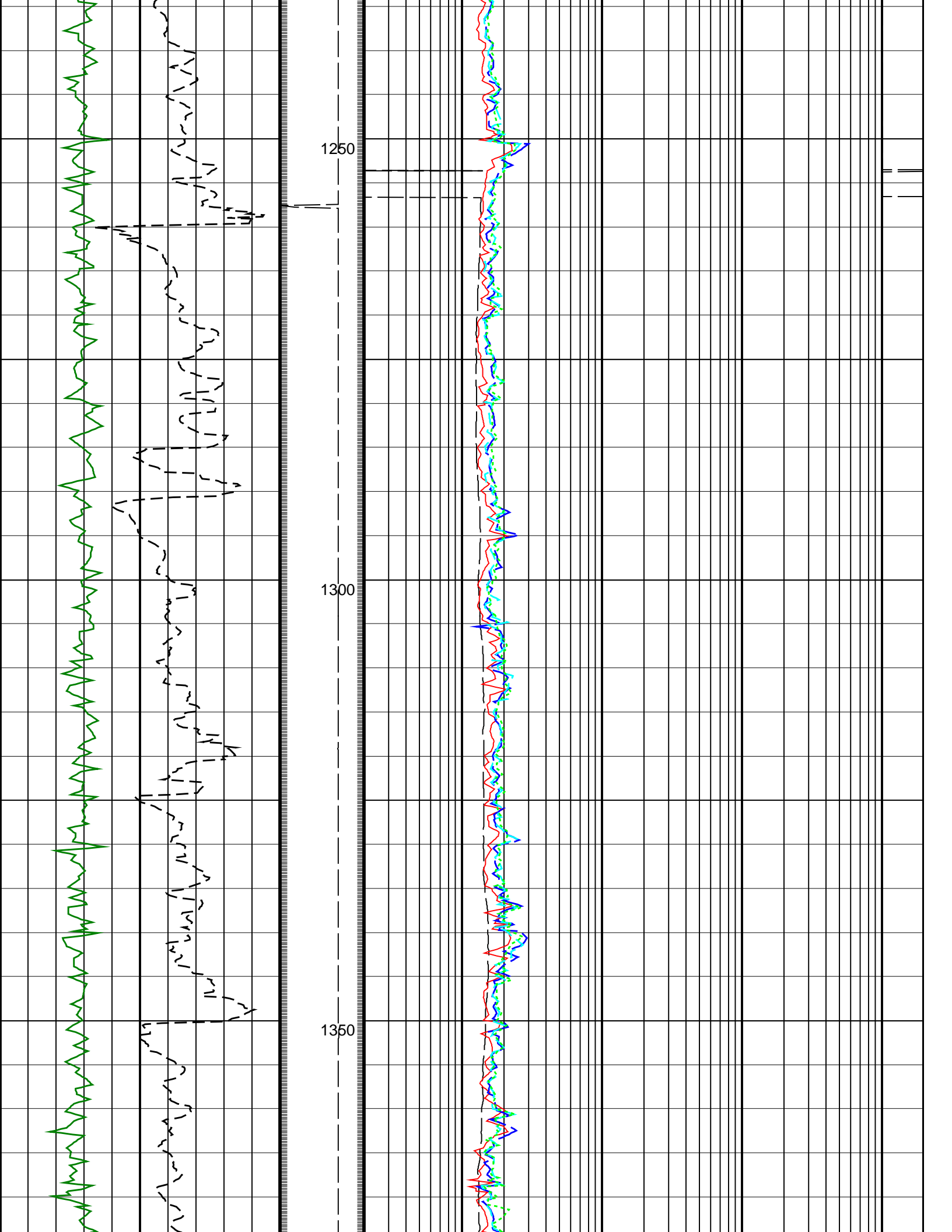
- GR Samples
- Ring Samples

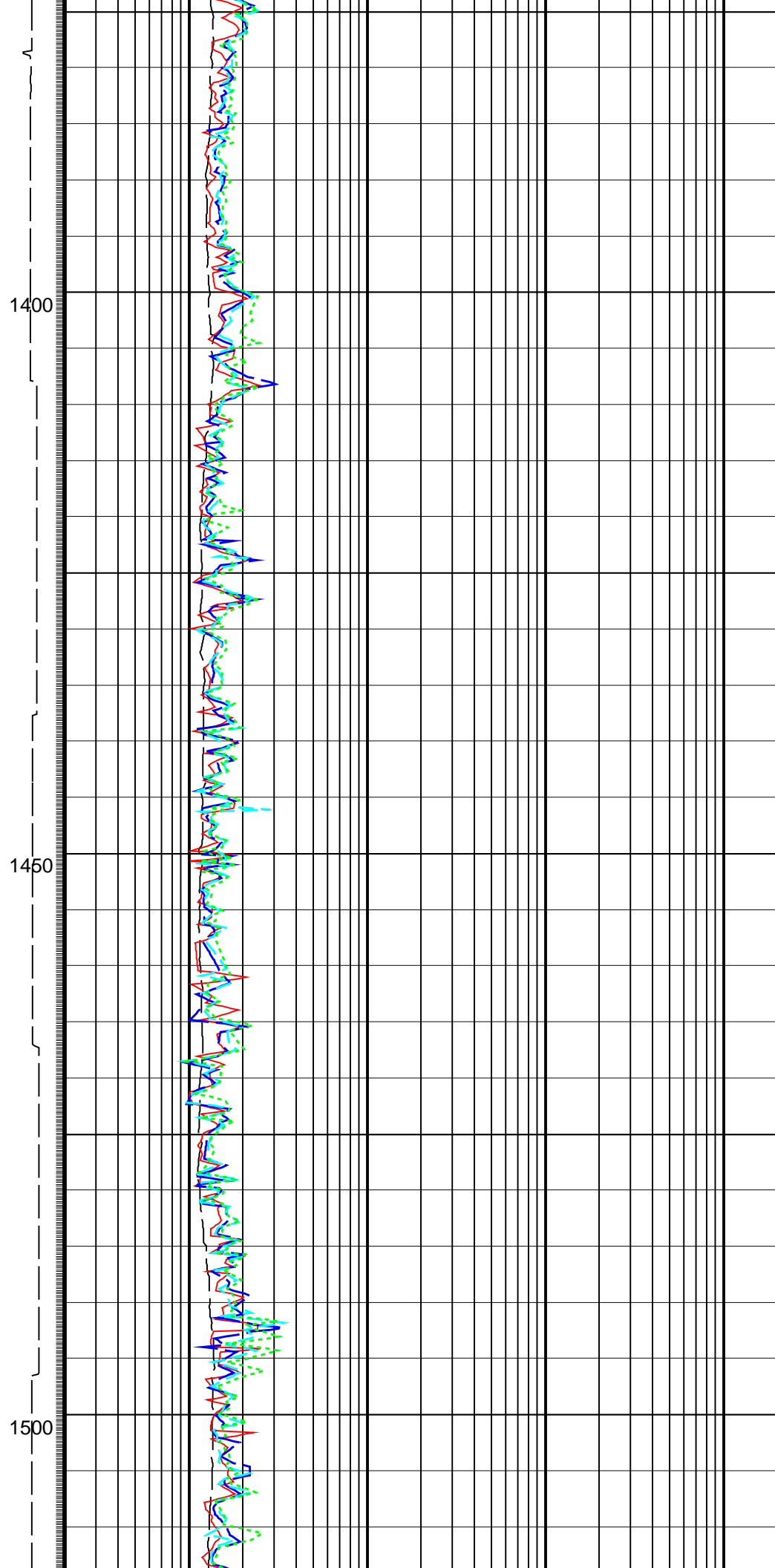
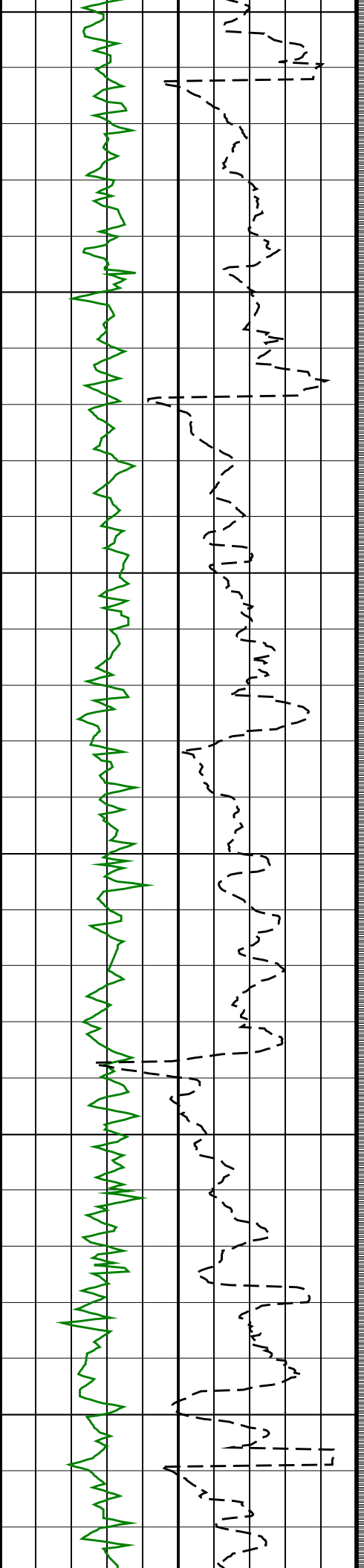


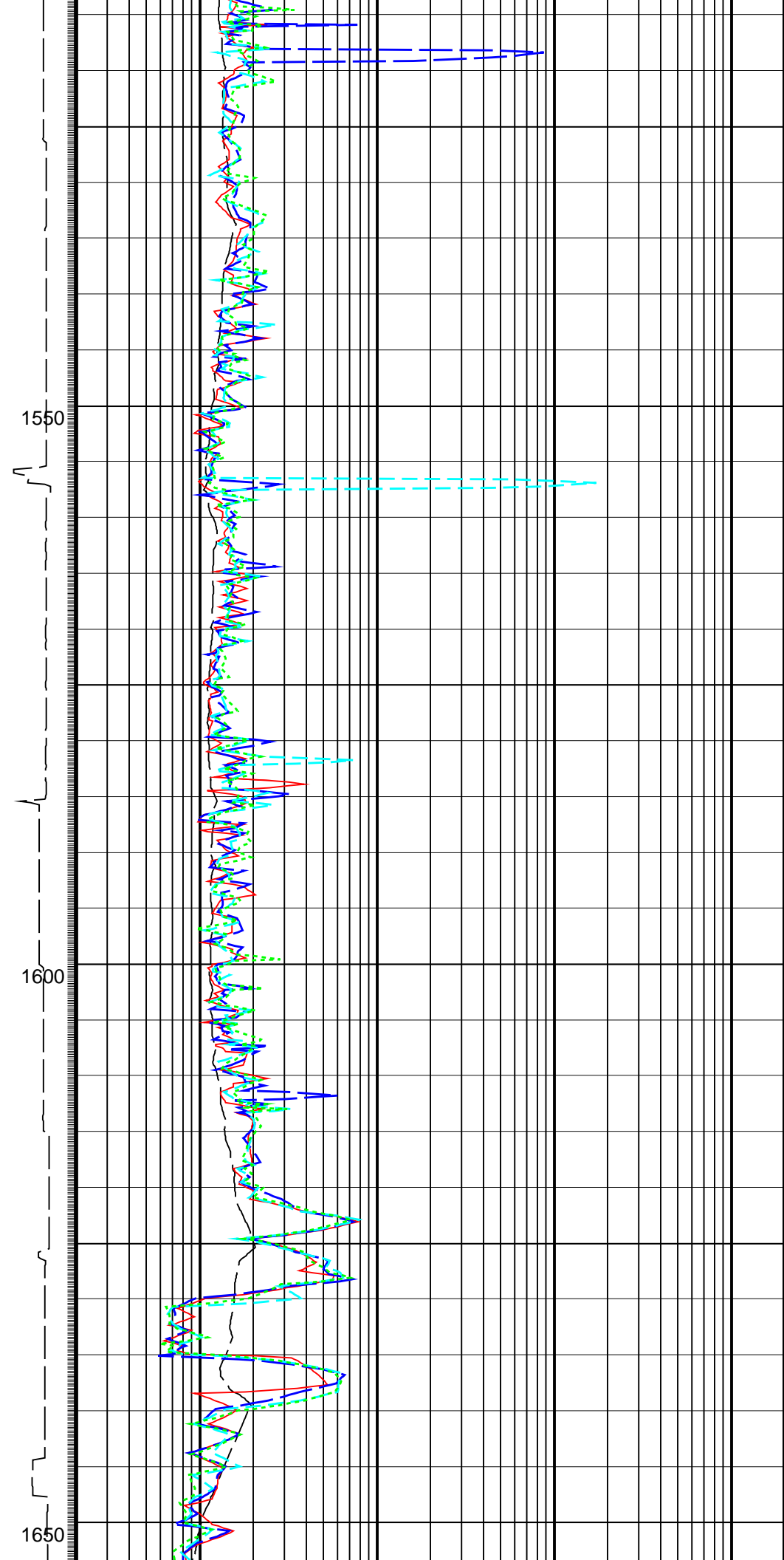
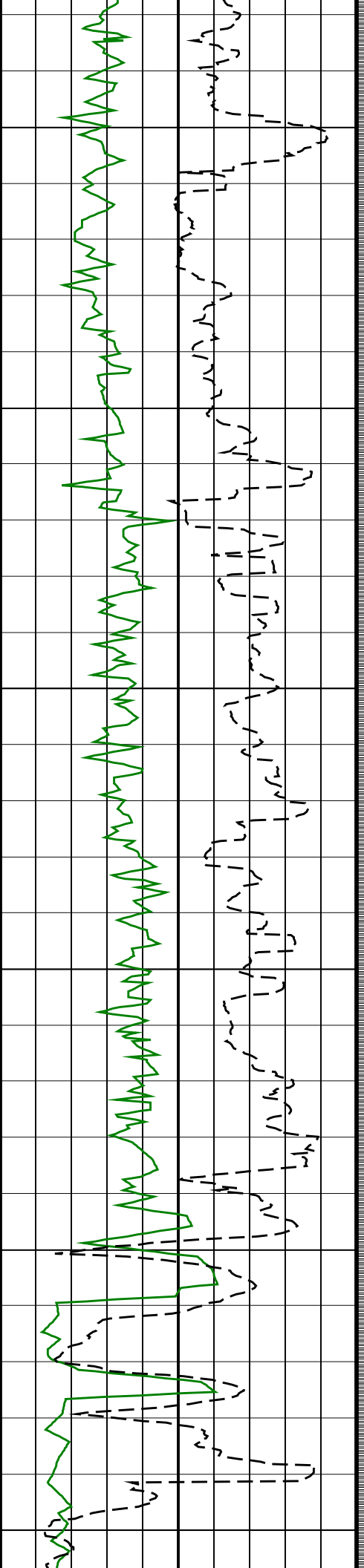


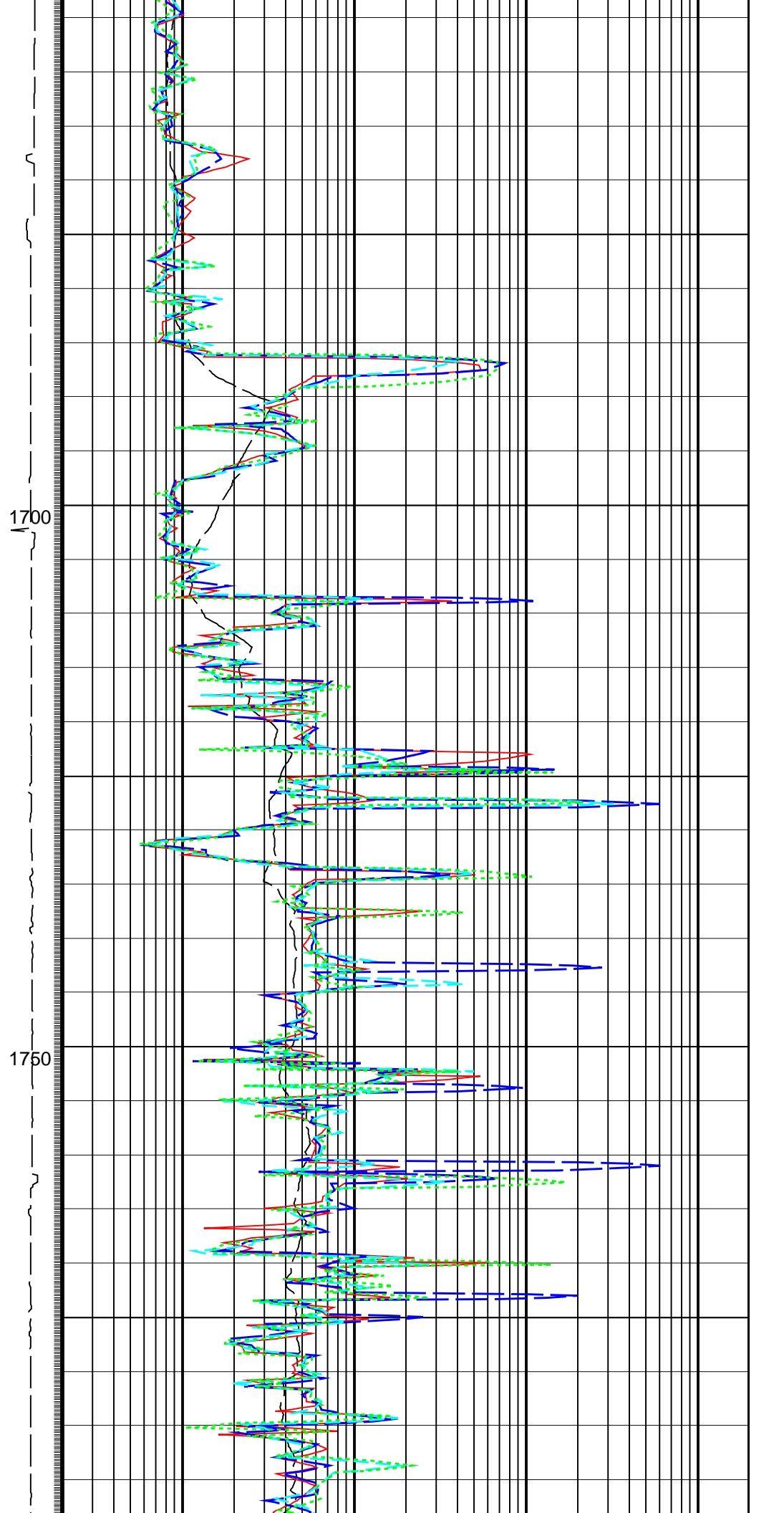
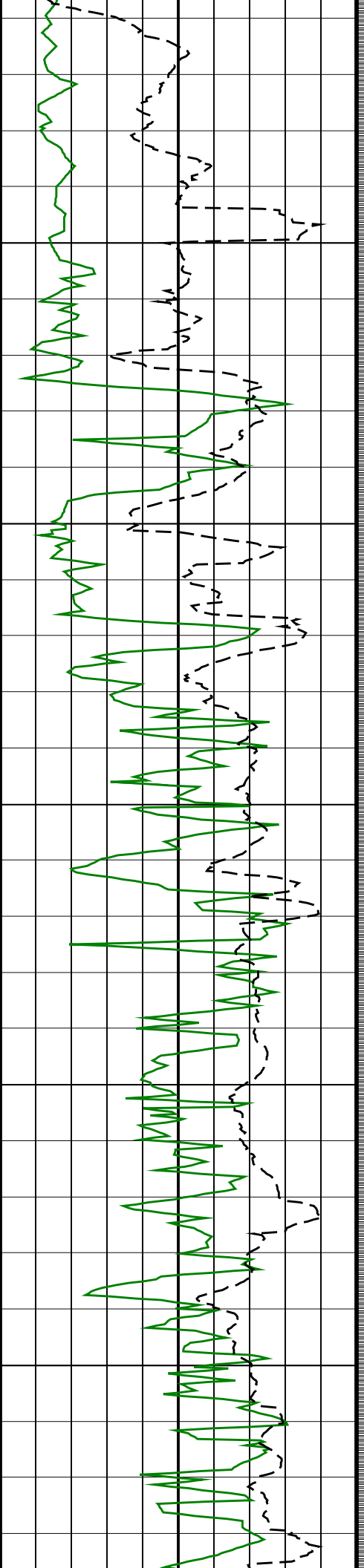




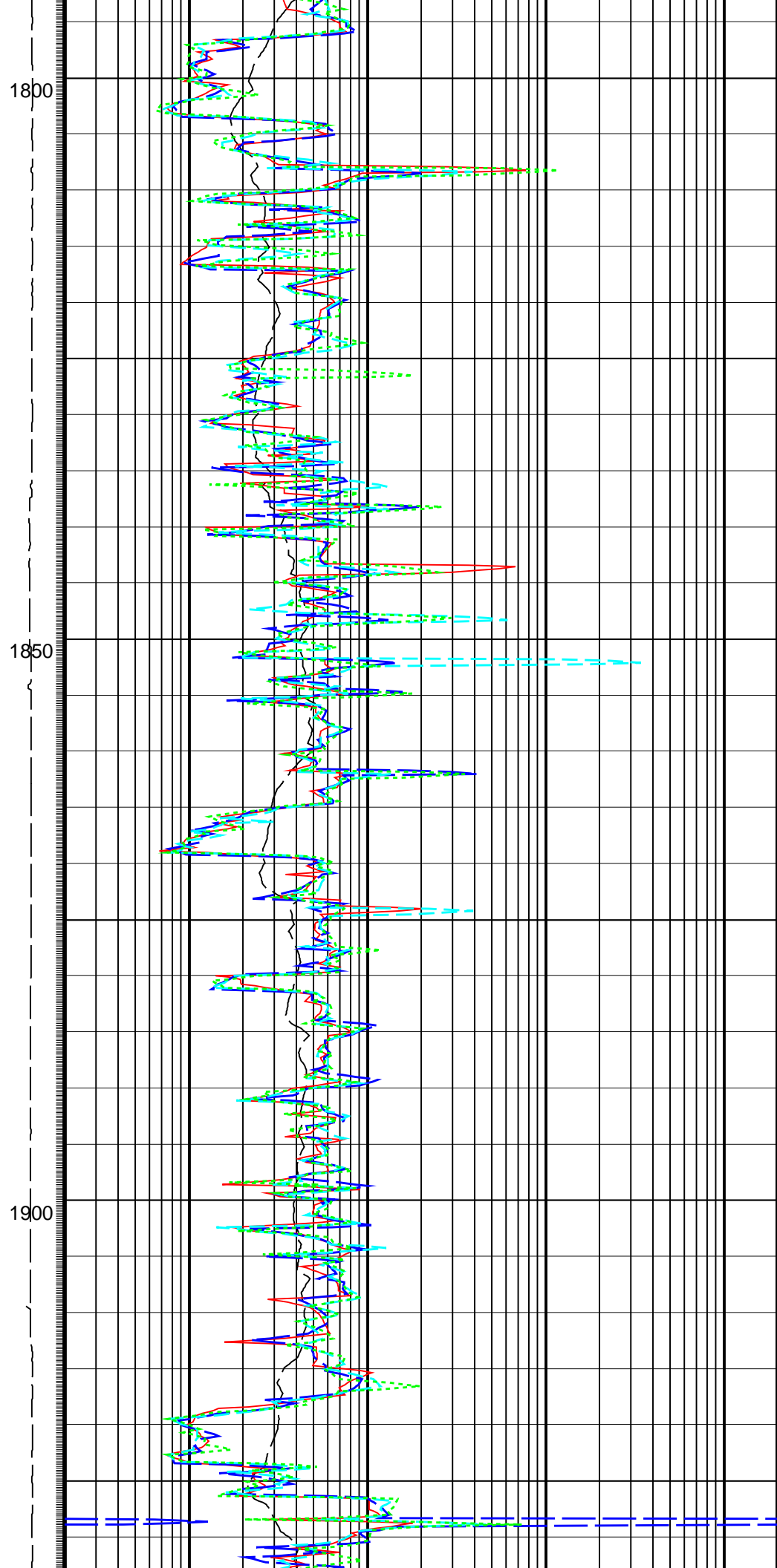
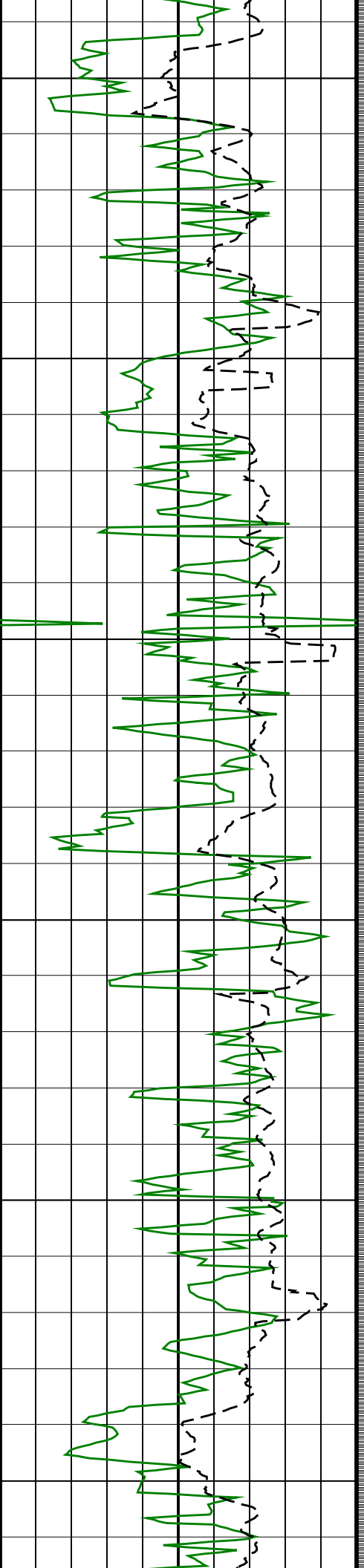


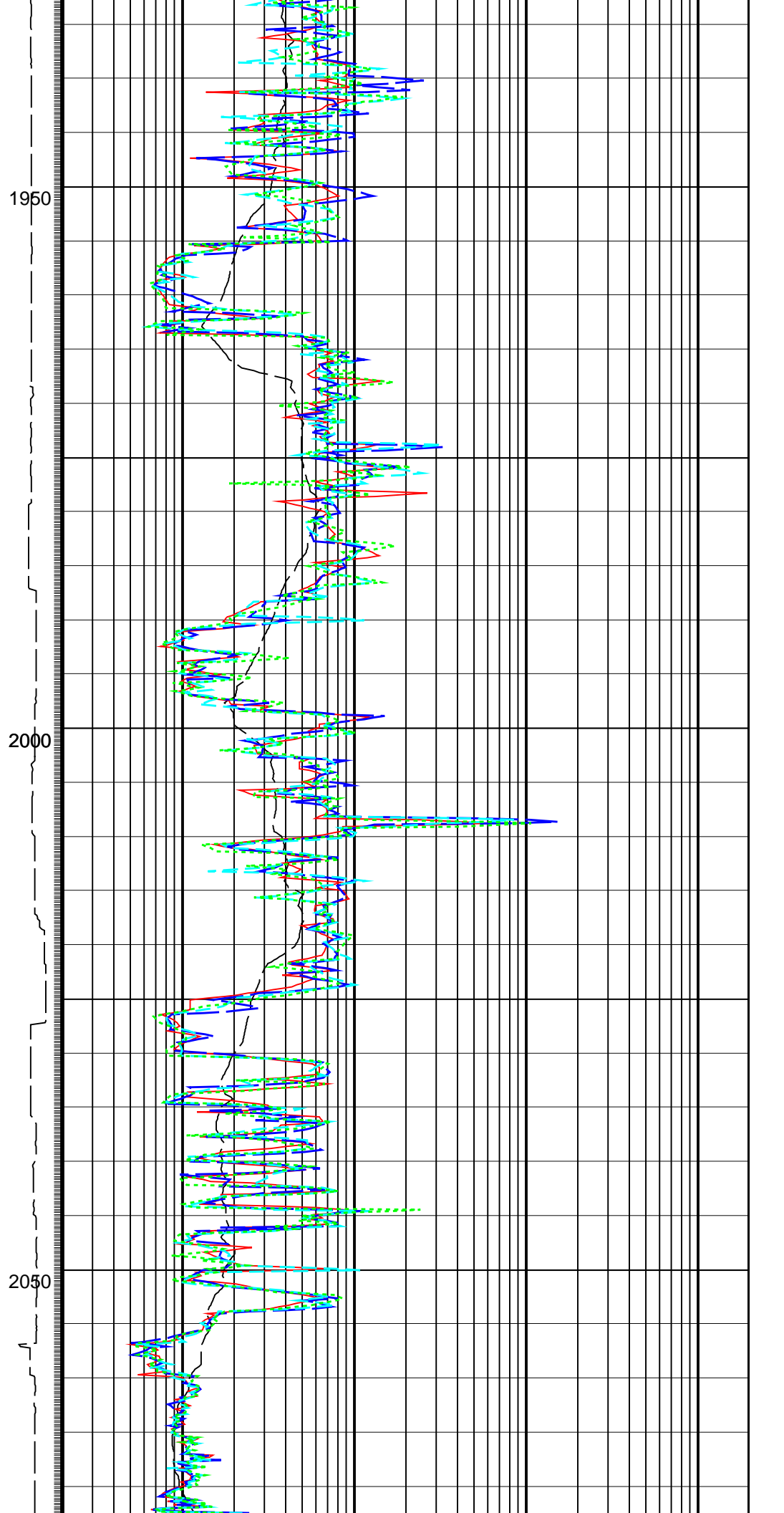
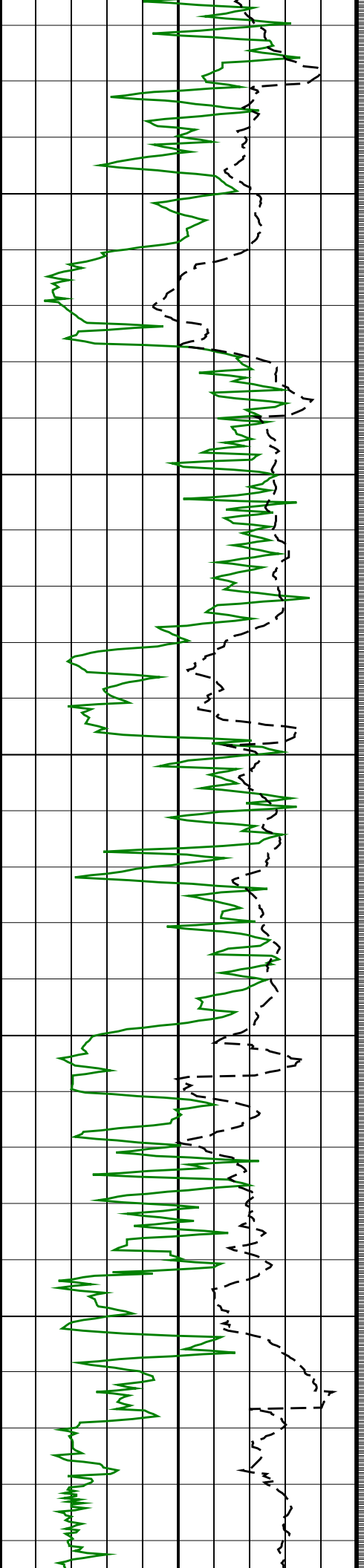


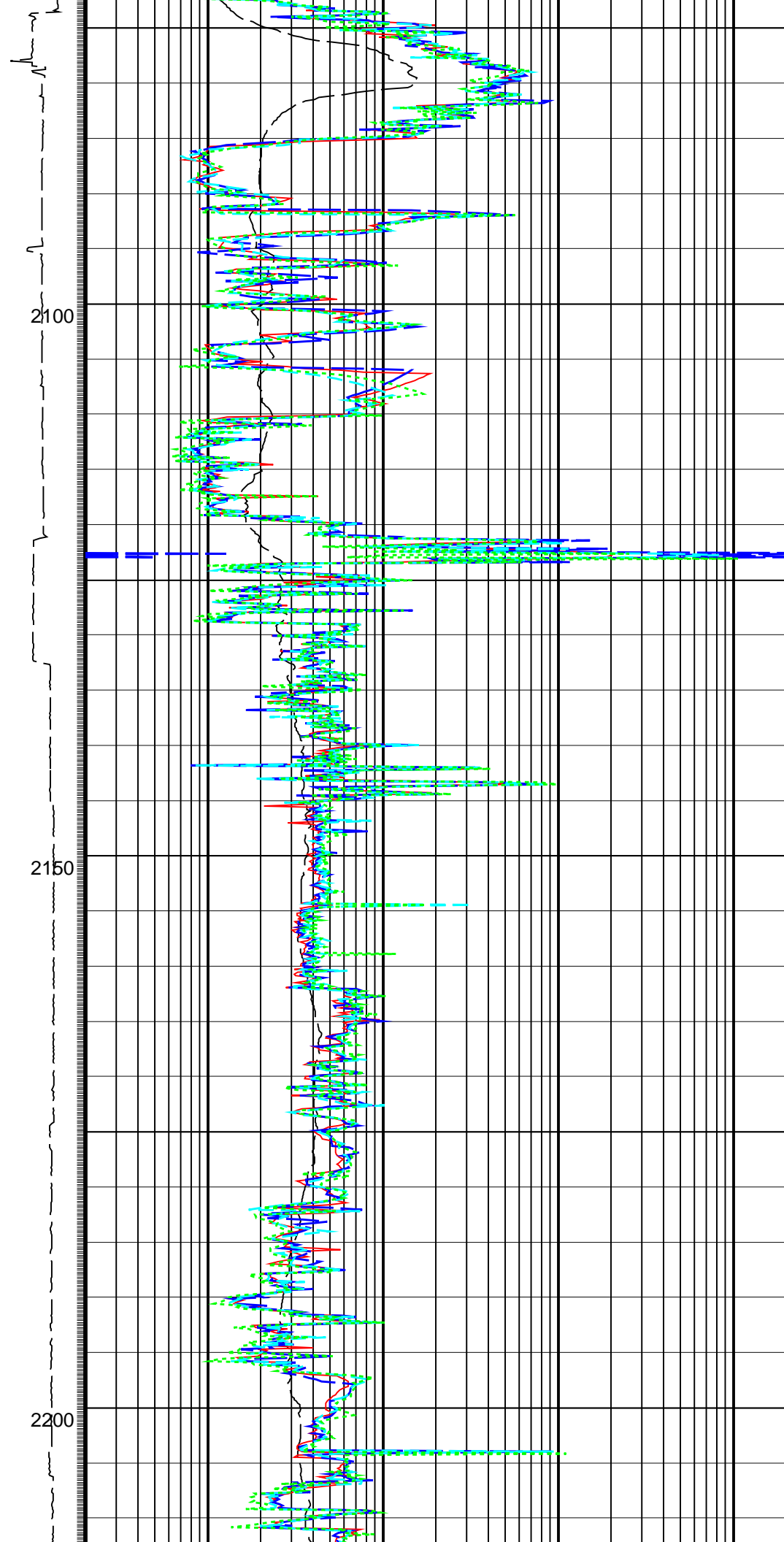
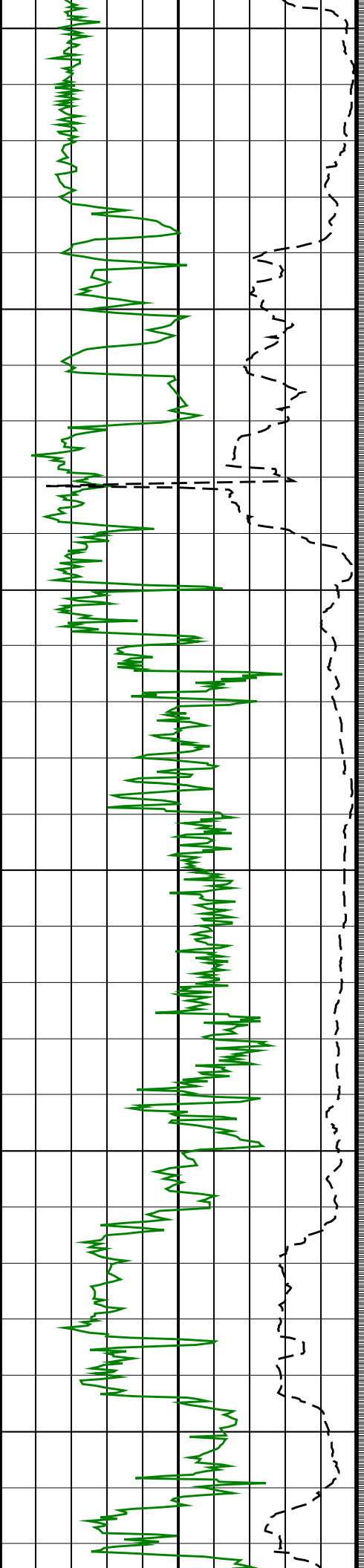


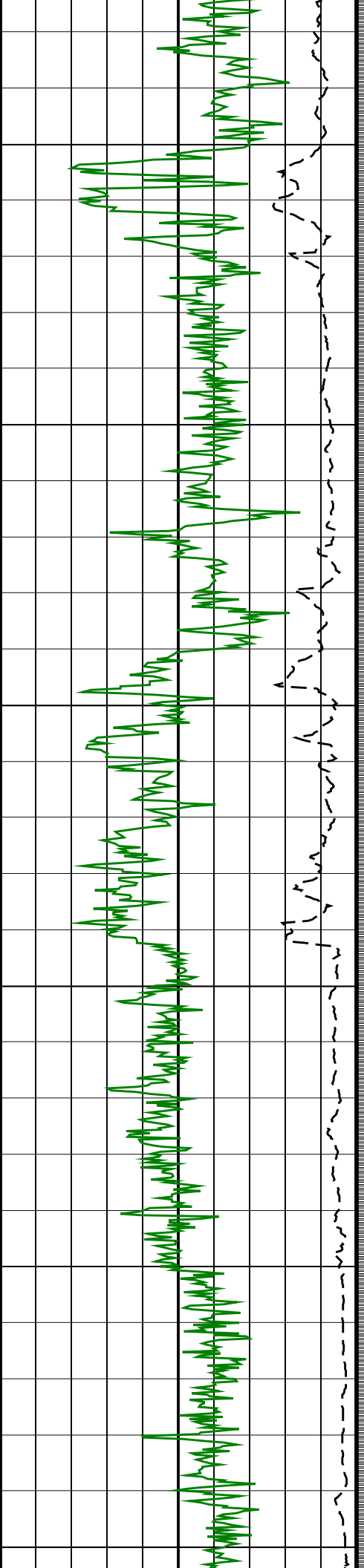








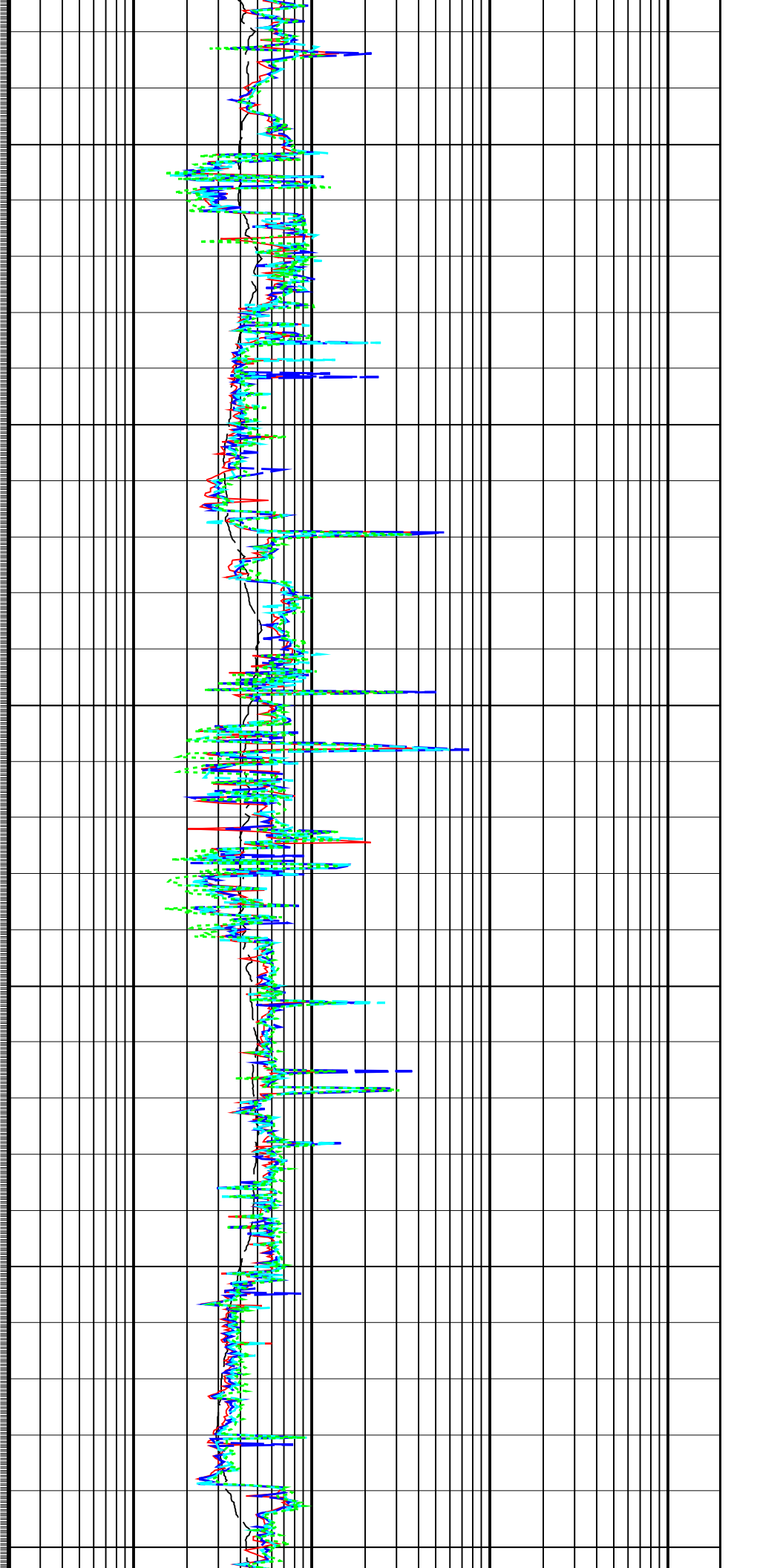


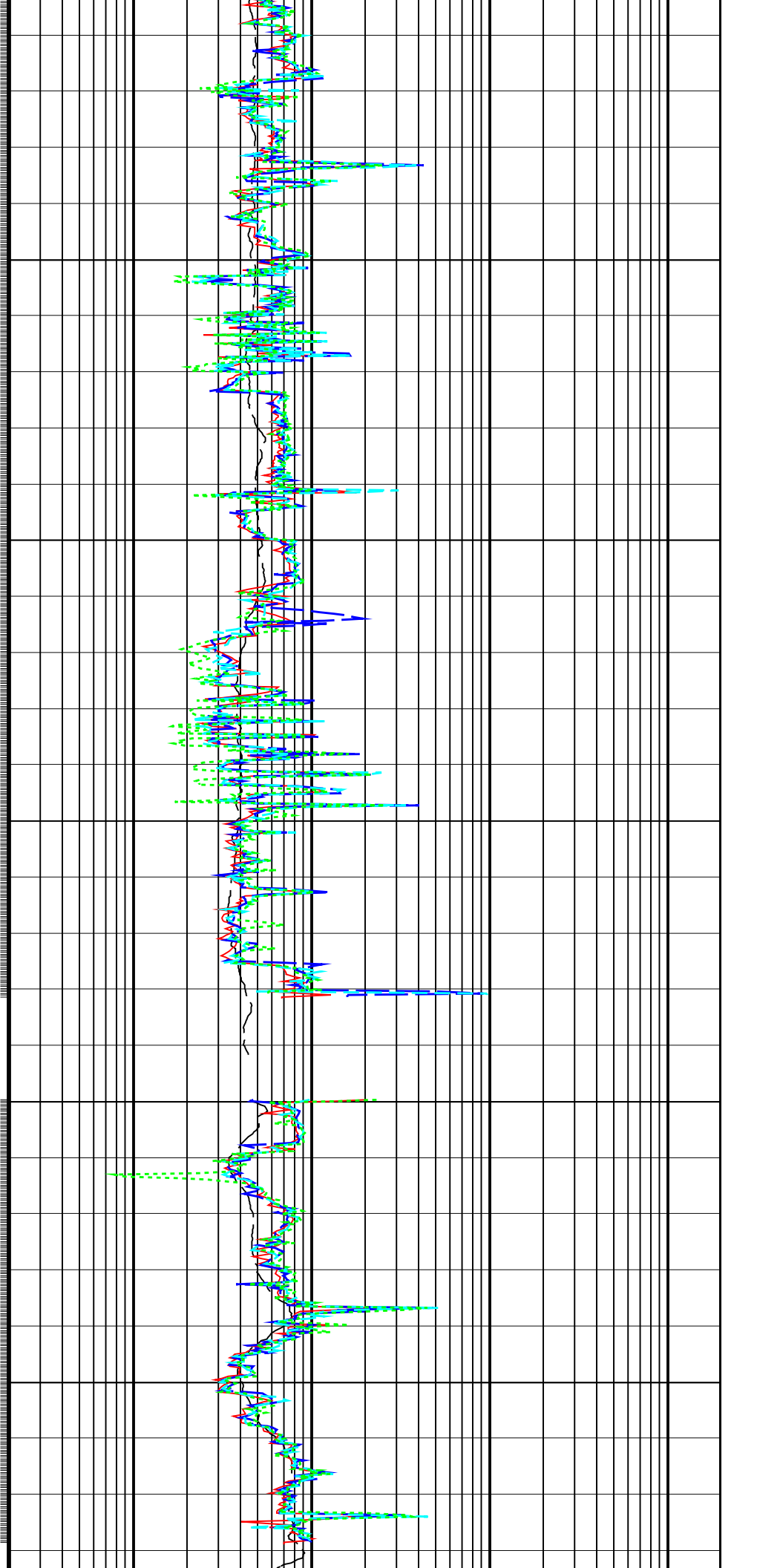
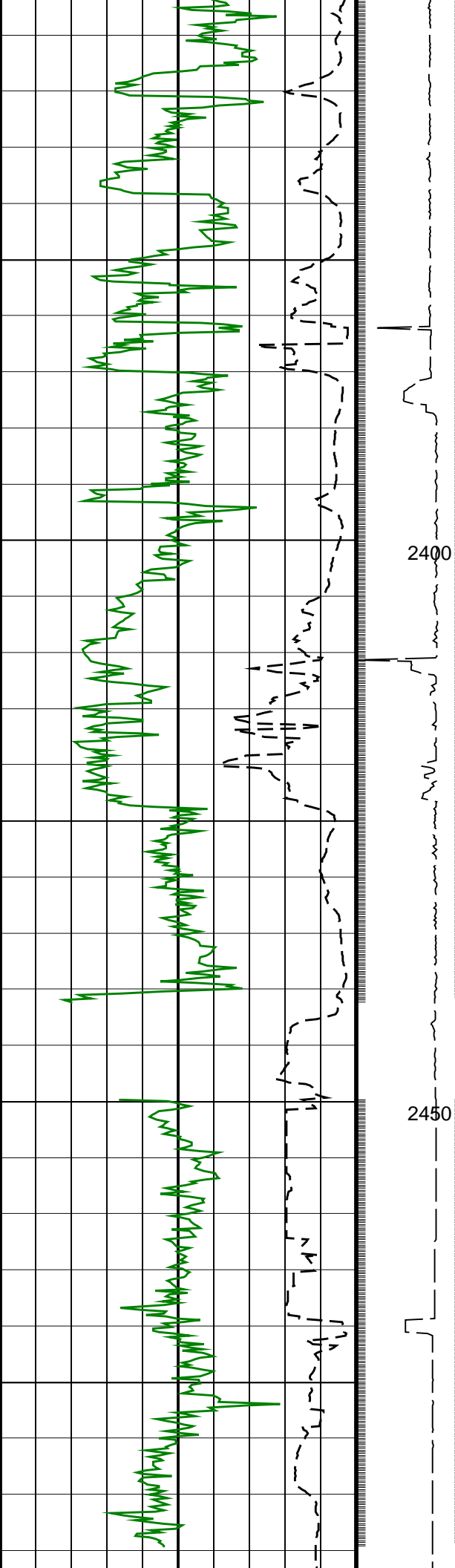


2250

2300

2350





<div><div>ROP*5 (ROP5)</div><div>(M/HR)</div><div>0</div></div>										<div><div>Surface RPM (RPM)</div><div>(RPM)</div><div>0200</div><div>2500</div></div>										<div><div>Bit Resistivity, Real-Time (RES_BIT_RT)</div><div>(OHMM)</div><div>0.2</div><div>2000</div></div>									
<div><div>RAB Gamma Ray, Real-Time (GR_RAB_RT)</div><div>(GAPI)</div><div>0200</div></div>										<div><div>Ring Resistivity, Real-Time (RES_RING_RT)</div><div>(OHMM)</div><div>0.2</div><div>2000</div></div>																			
										<div><div>Deep Button Resistivity, Real-Time (RES_BD_RT)</div><div>(OHMM)</div><div>0.2</div><div>2000</div></div>																			
										<div><div>Medium Button Resistivity, Real-Time (RES_BM_RT)</div><div>(OHMM)</div><div>0.2</div><div>2000</div></div>																			
										<div><div>Shallow Button Resistivity, Real-Time (RES_BS_RT)</div><div>(OHMM)</div><div>0.2</div><div>2000</div></div>																			
<div>PIP SUMMARY</div> <div><div>GR Samples</div><div>Ring Samples</div></div>																													