



# GAS RATIOS LOG



WELL : FUR SEAL 1

FROM (m): 777

TO (m): 2575

SCALE: 1/500

## GENERAL DATA

Client : APACHE ENERGY  
 Country : AUSTRALIA  
 Permit : VIC/P-54  
 Field : SUNFISH  
 Well Type : EXPLORATION  
 Rig Name : OCEAN PATRIOT

## LOCATION DATA

Latitude : 38 07 47.91 S  
 Longitude : 148 09 08.44E  
 RT-AHD (m): 21.5  
 Water Depth (m): 58.6

## CASING

762 mm Shoe (m): 78.1 m  
 340 mm Shoe (m): 817.6 m  
 244mm Shoe (m):

## FINAL WELL DATA

MD- Drillers depth (m):  
 TVD- Subsea AHD (m):  
 Date Well Spudded : 24-10-05  
 Date TD Reached :  
 Status :

## GAS RATIOS FORMULAE

GAS WETNESS RATIO (Wh)

$$GWR = (C2 + C3 + C4 + C5)/(C1 + C2 + C3 + C4 + C5) * 100$$

LIGHT TO HEAVY RATIO (Bh)

$$LHR = (C1 + C2)/(C3 + C4 + C5)$$

OIL CHARACTER QUALIFIER (Ch)

$$OCQ = (C4 + C5)/(C3)$$

## LITHOLOGY LEGEND

	Limestone		Conglomerate		Mica
	Coal		Dolomite		Ferrous
	Claystone		Carb. Siltstone		Chert
	Calclutite		Calc. Siltstone		Calcareous
	Med Sandstone		Pyrite		Dolomitic
	Coarse Sandston		Siderite		Carbonaceous
	Fine Sandstone		Glauconite		Lithoclast
	VF Sandstone		Feldspar		Breccia

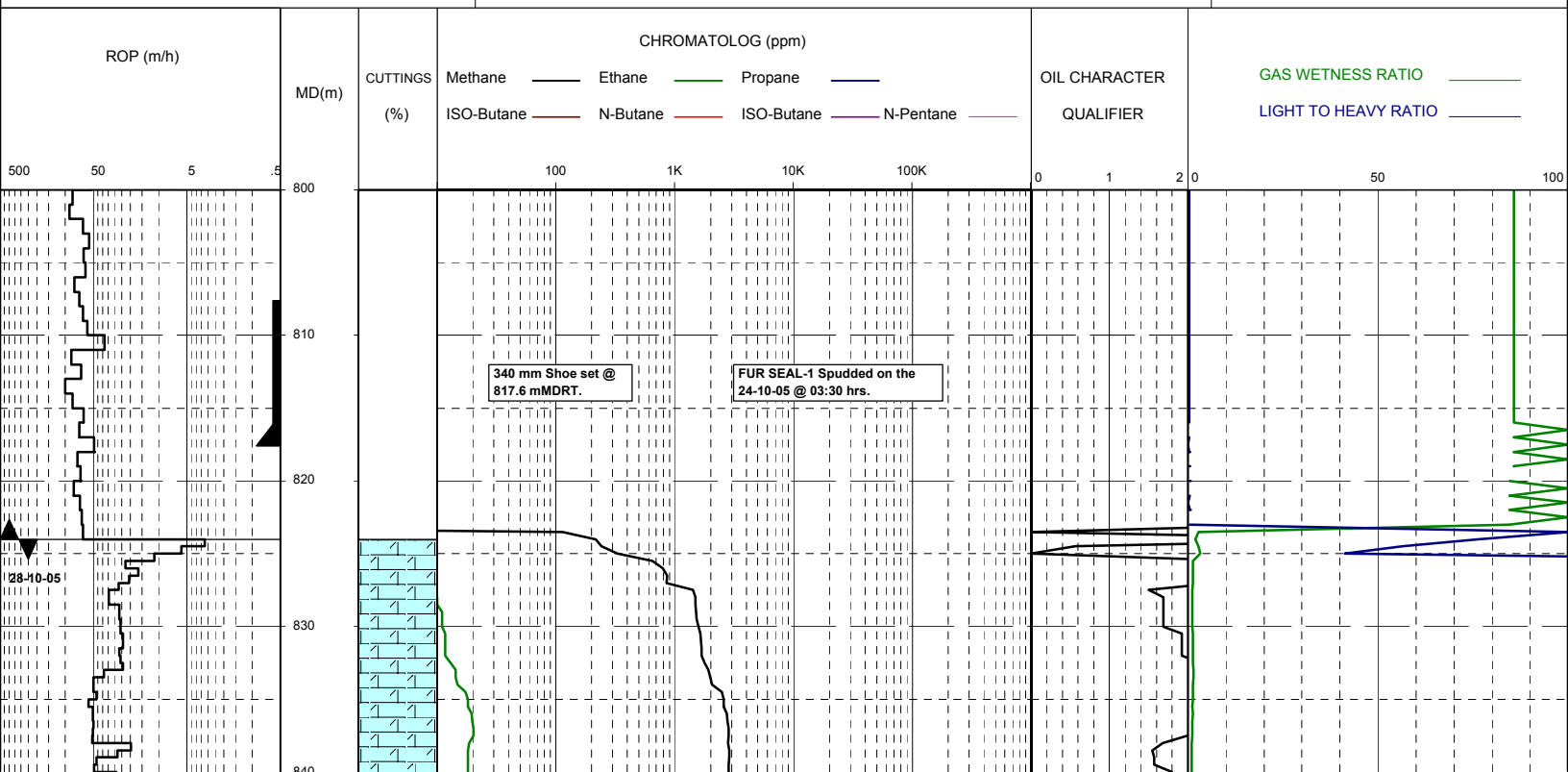
1 unit = 200 ppm methane equivalent in air

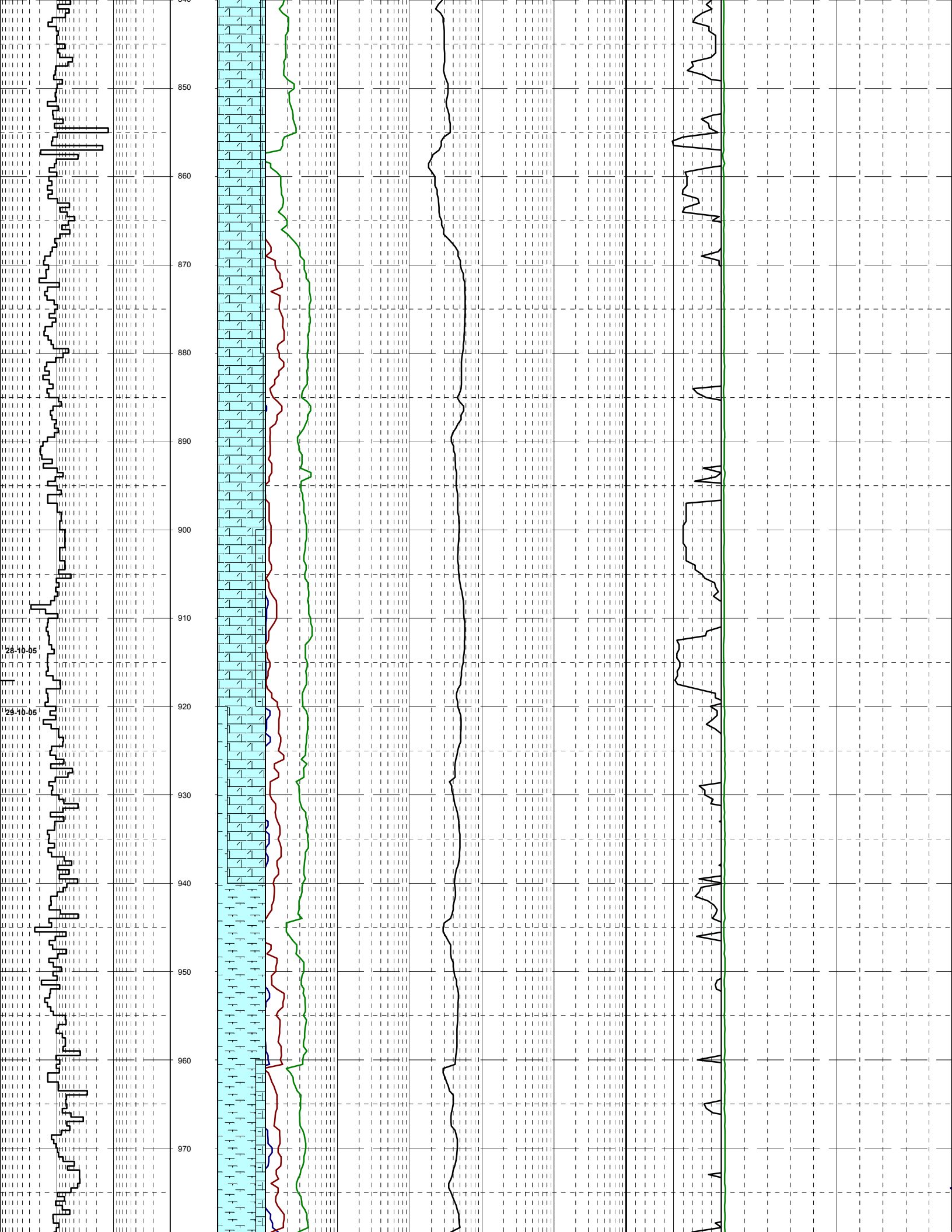
## GEOSERVICES CREW

### ALS ENGINEERS

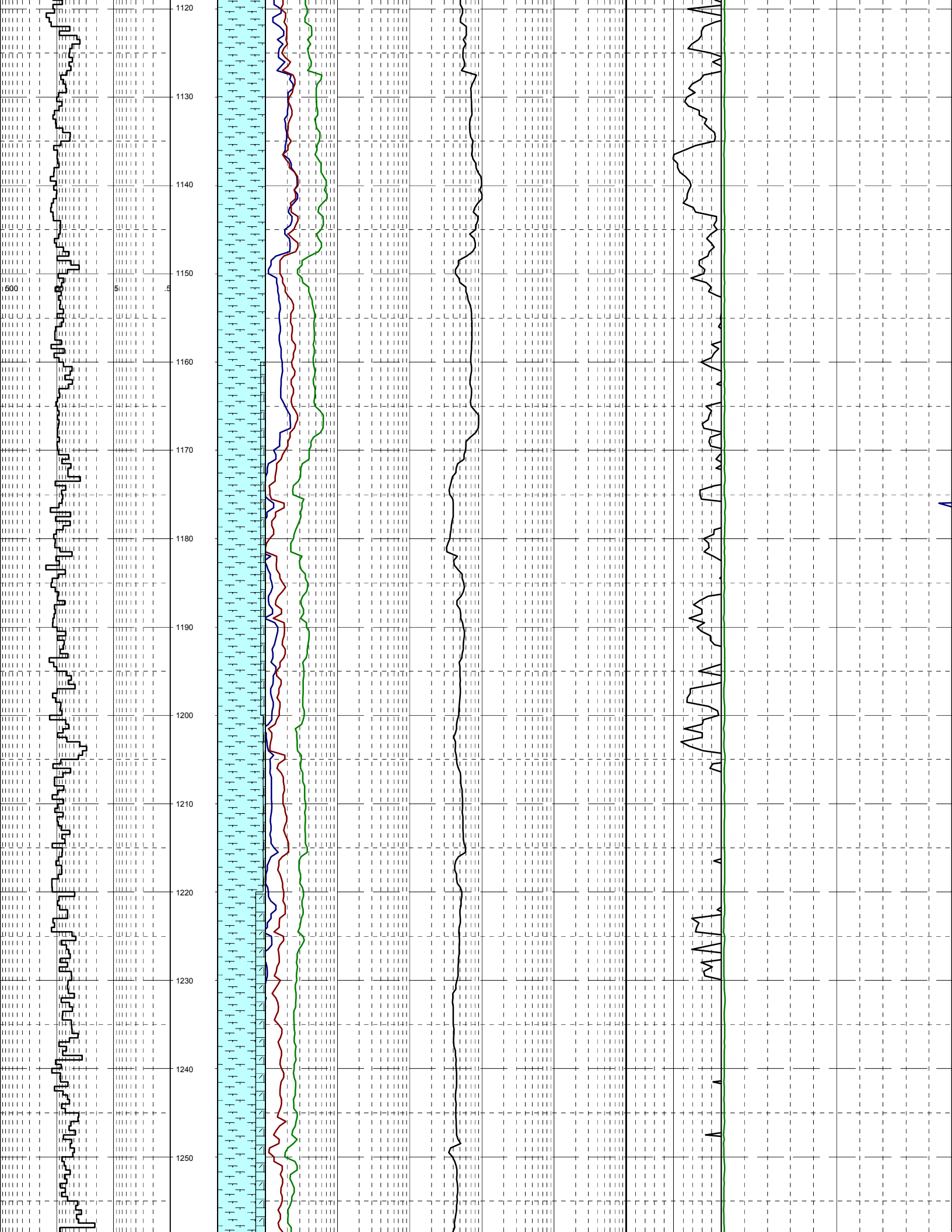
D.ADDERLEY  
 P.McGILVERAY  
 A.DUNN

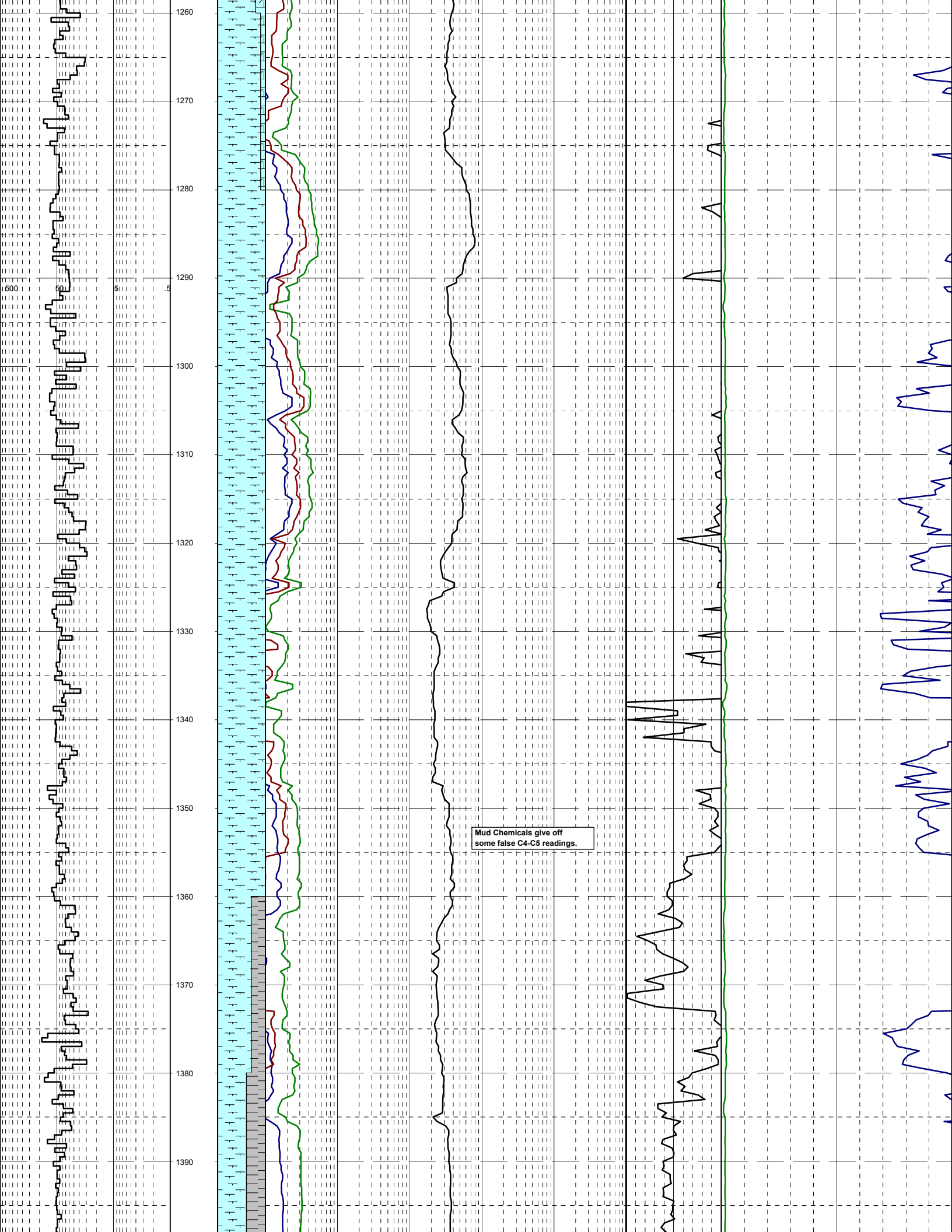
### MUDLOGGERS

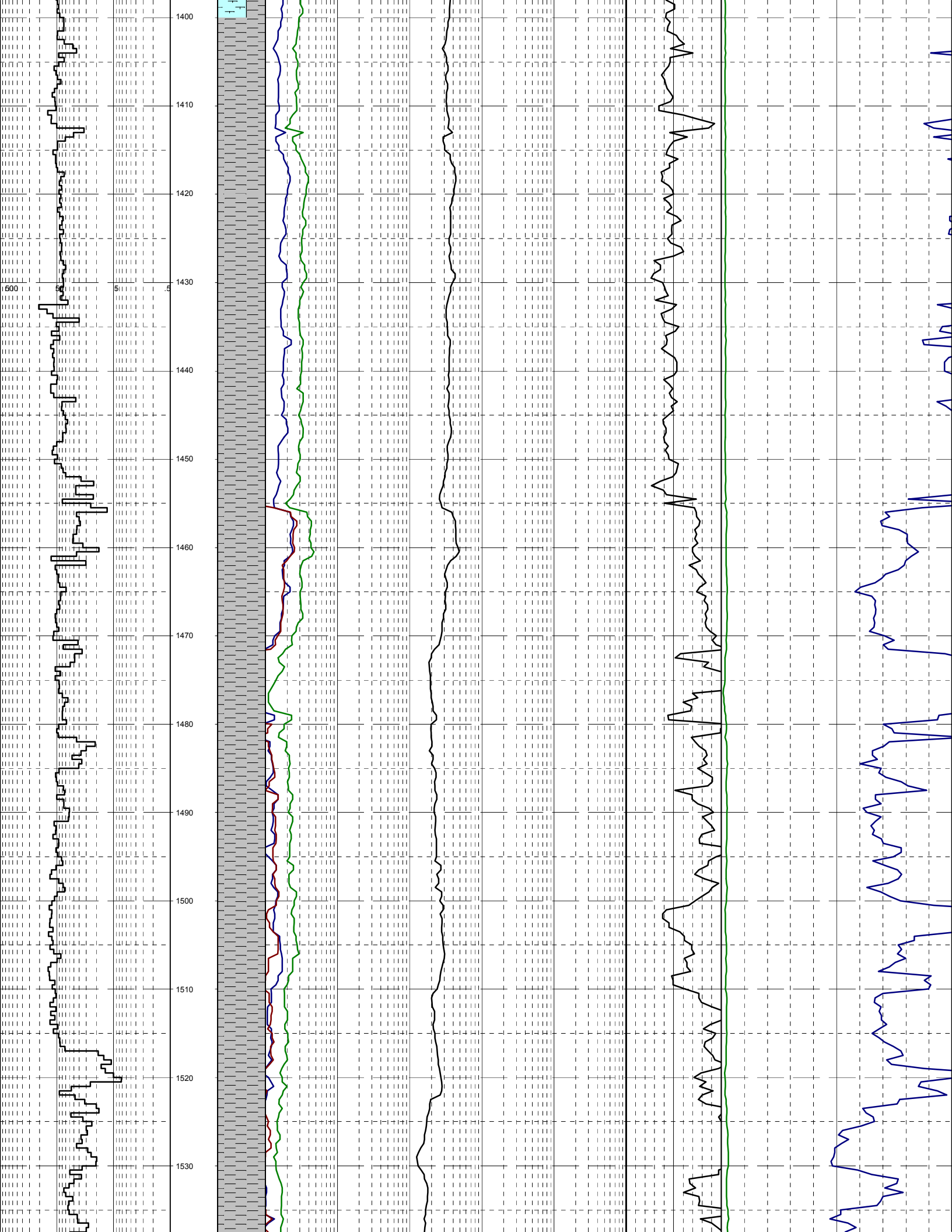


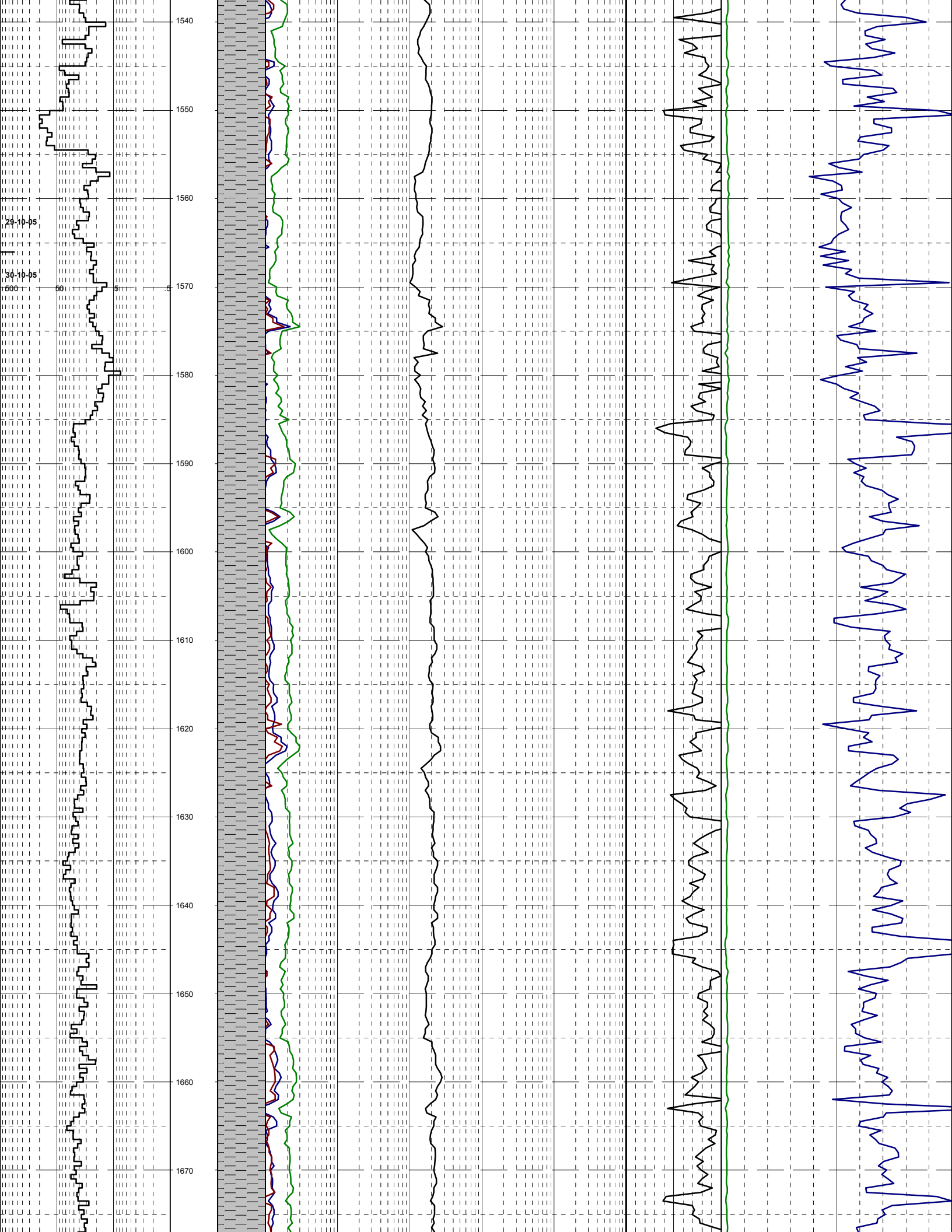


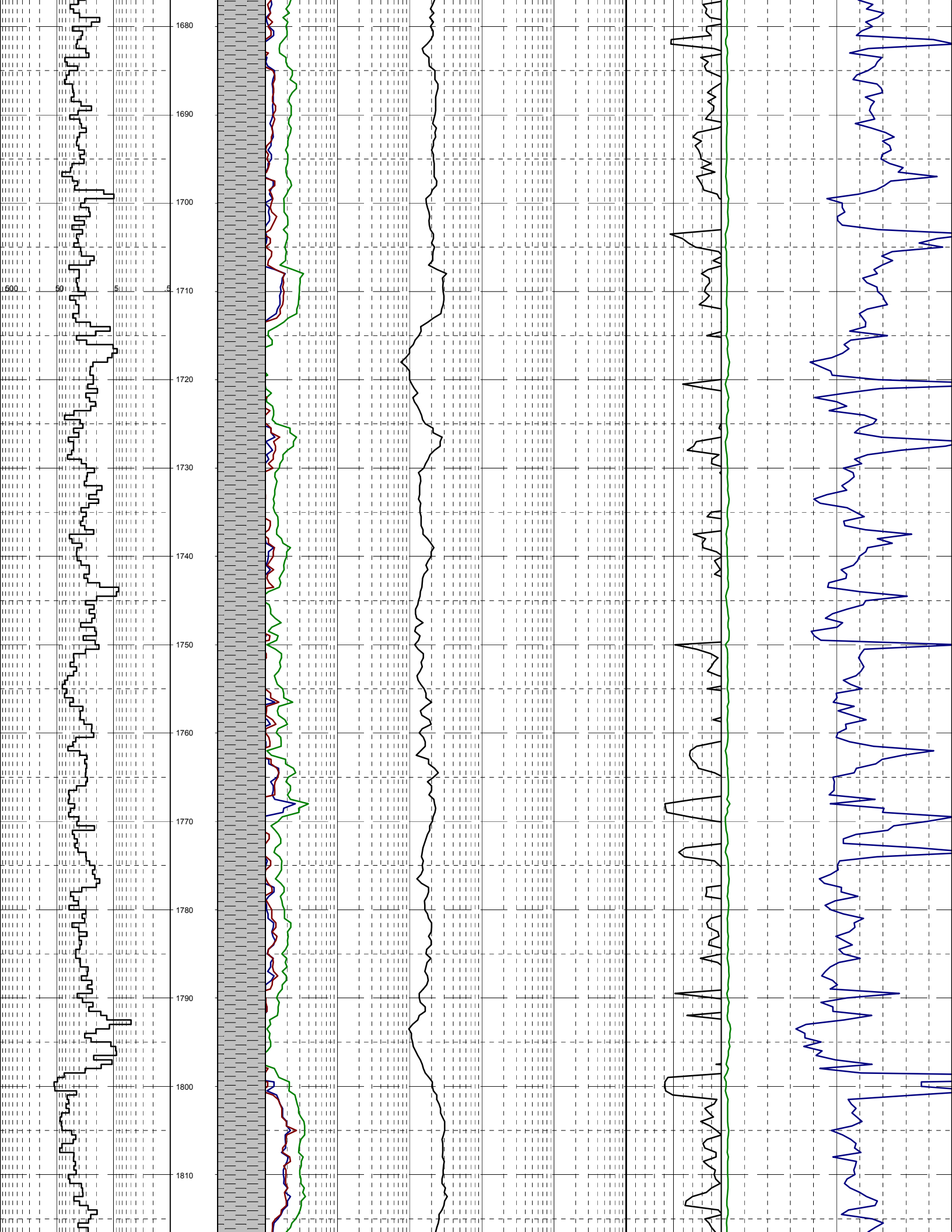




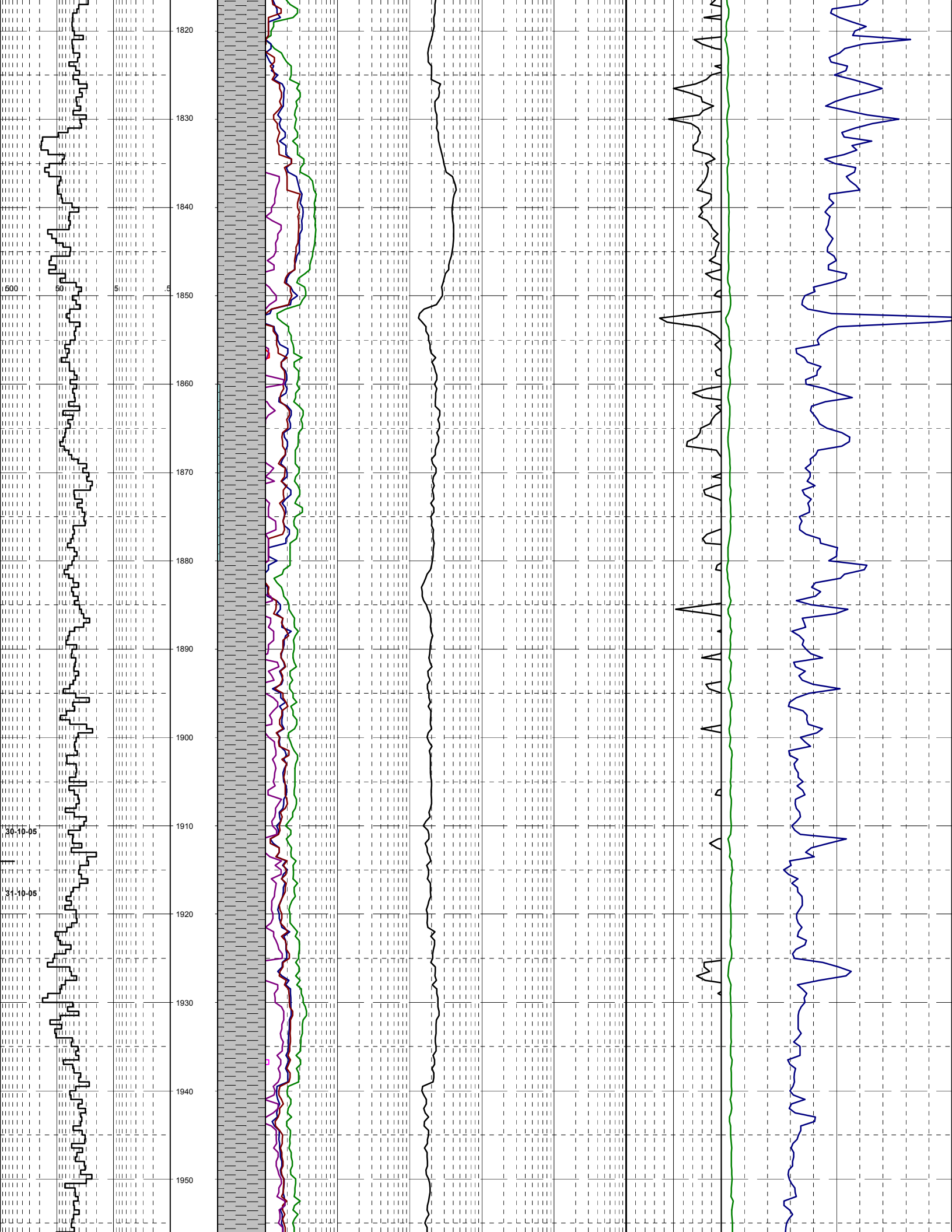


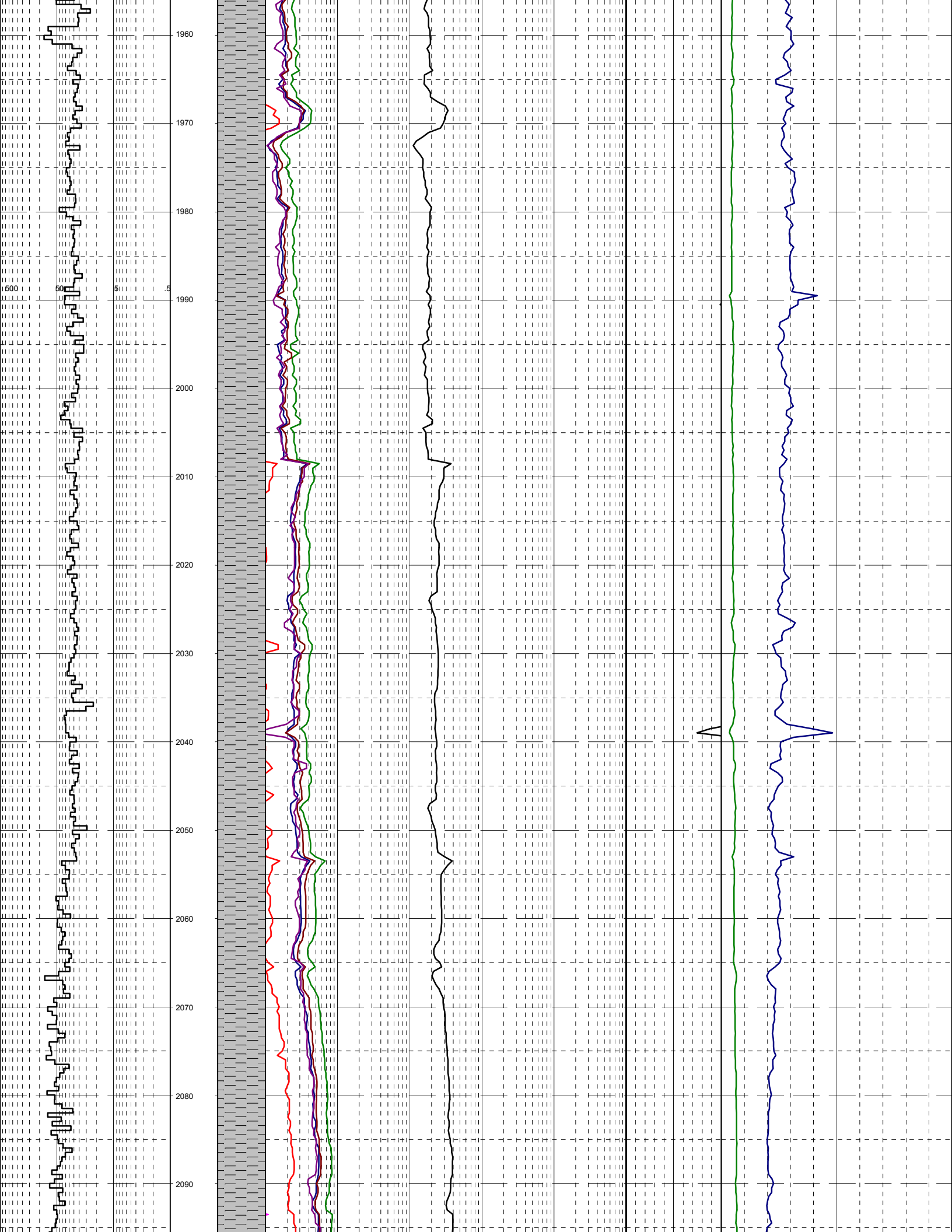


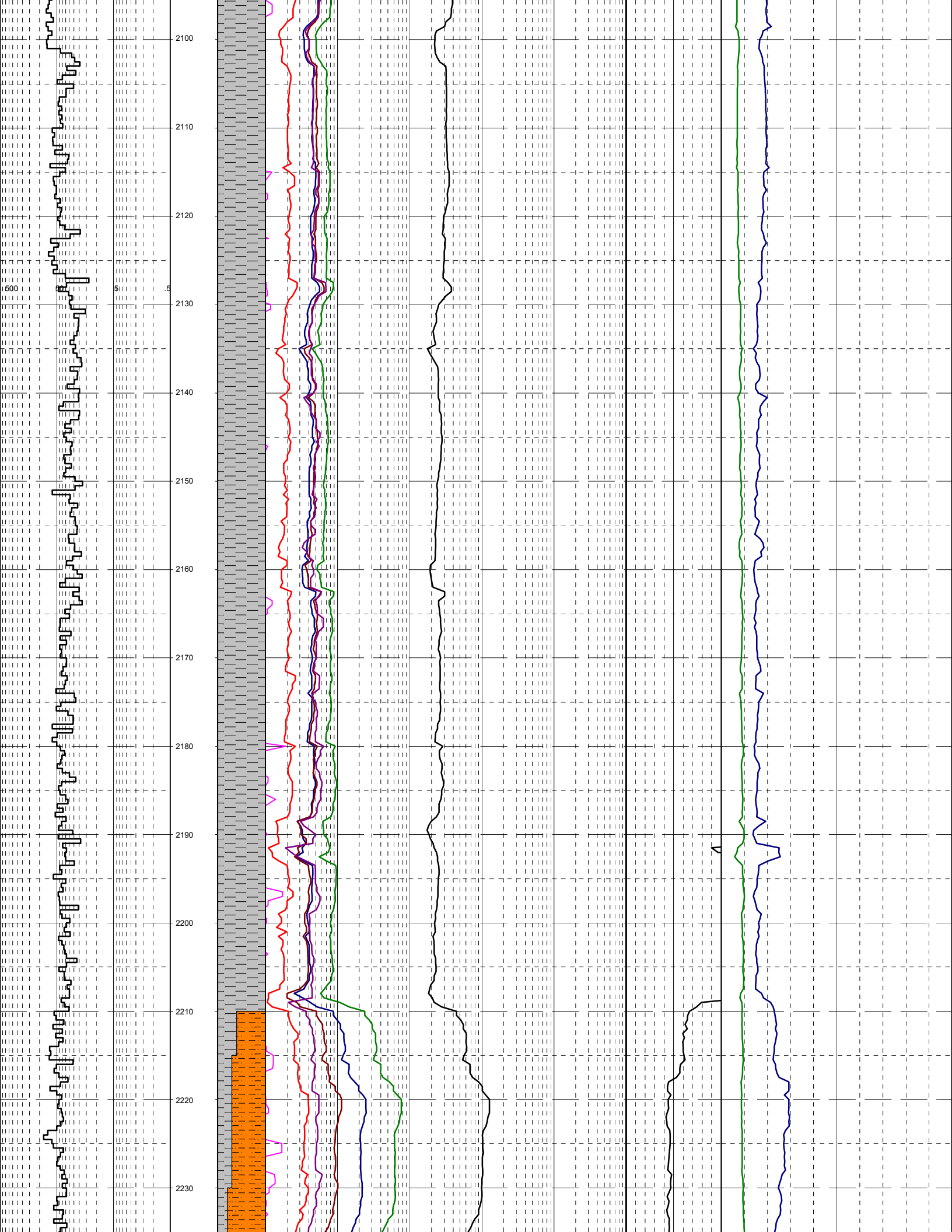


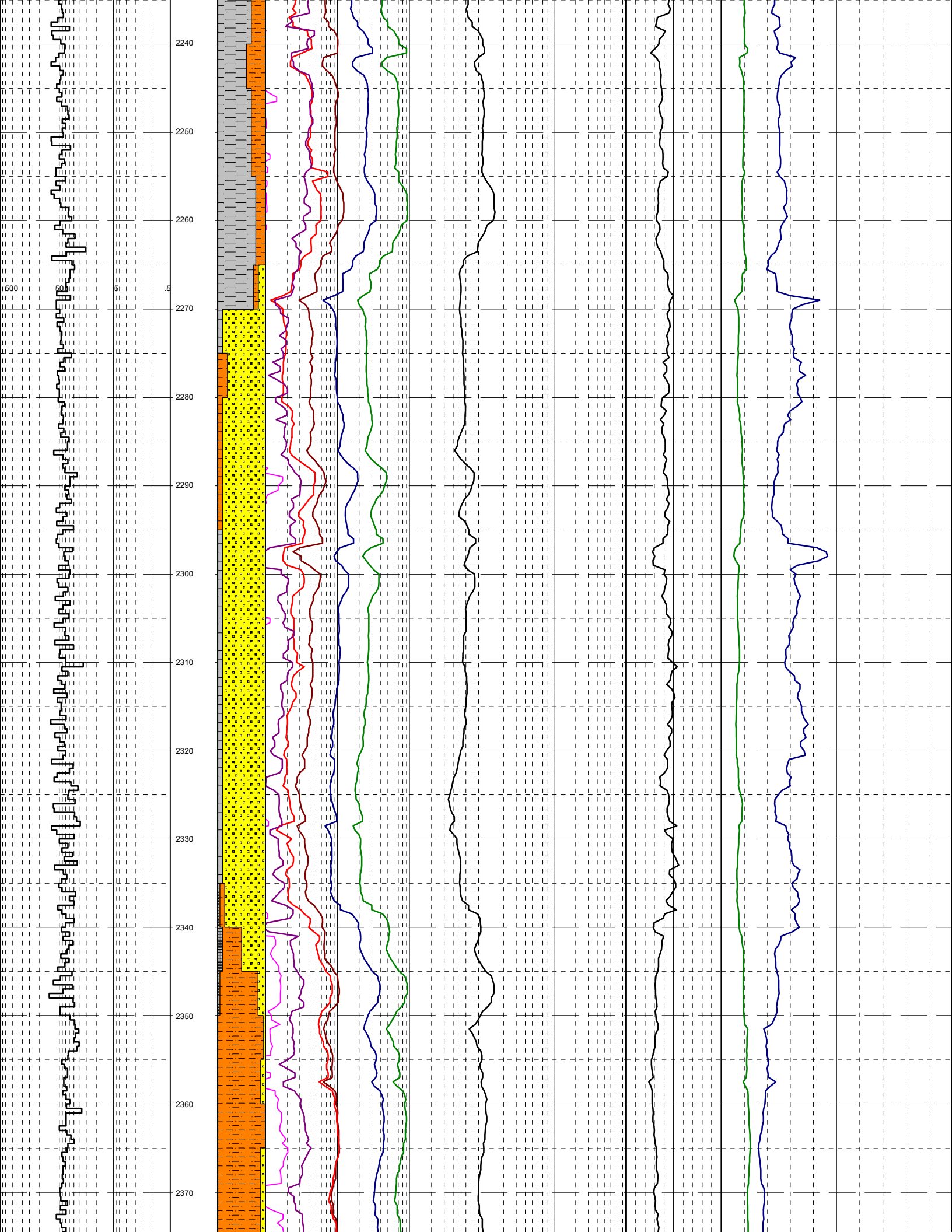


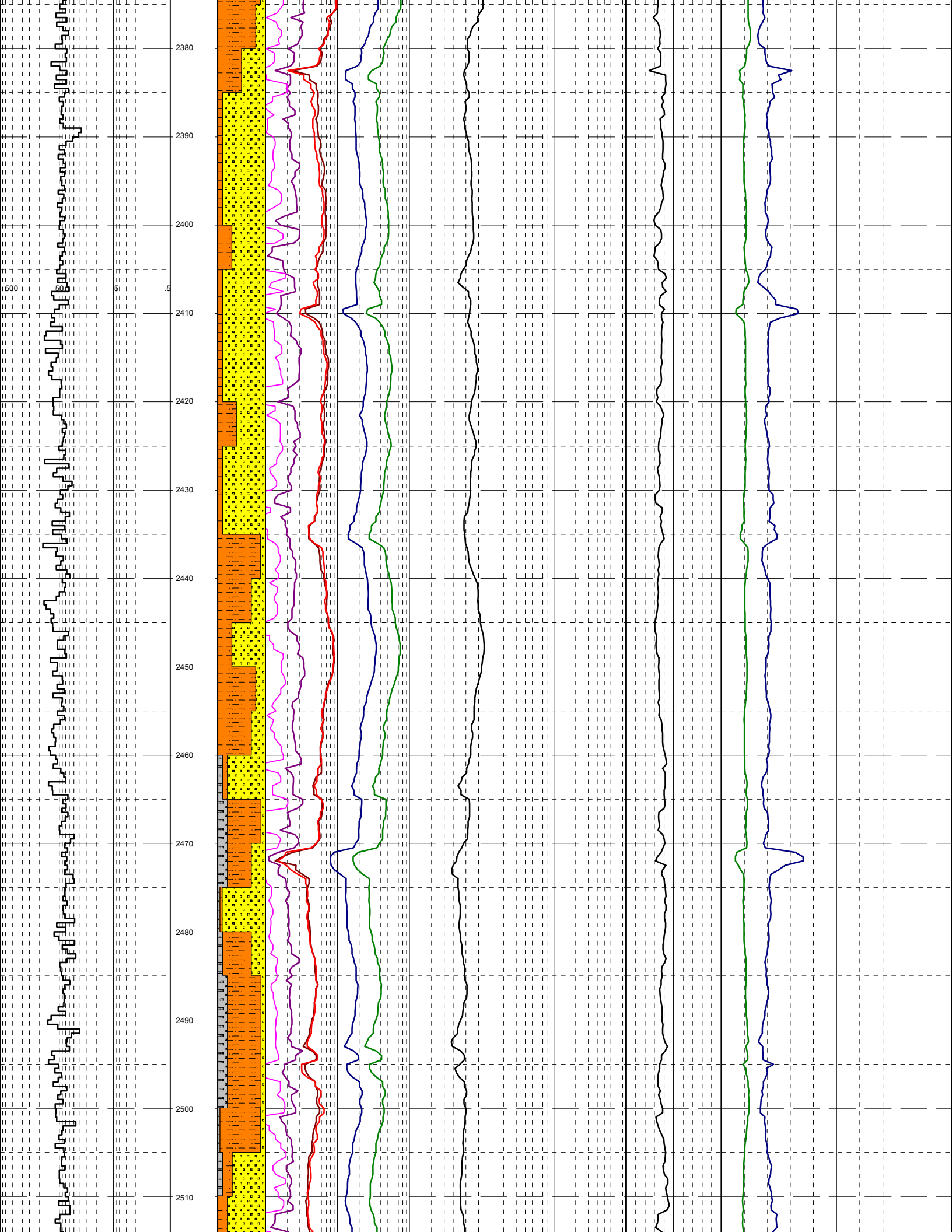


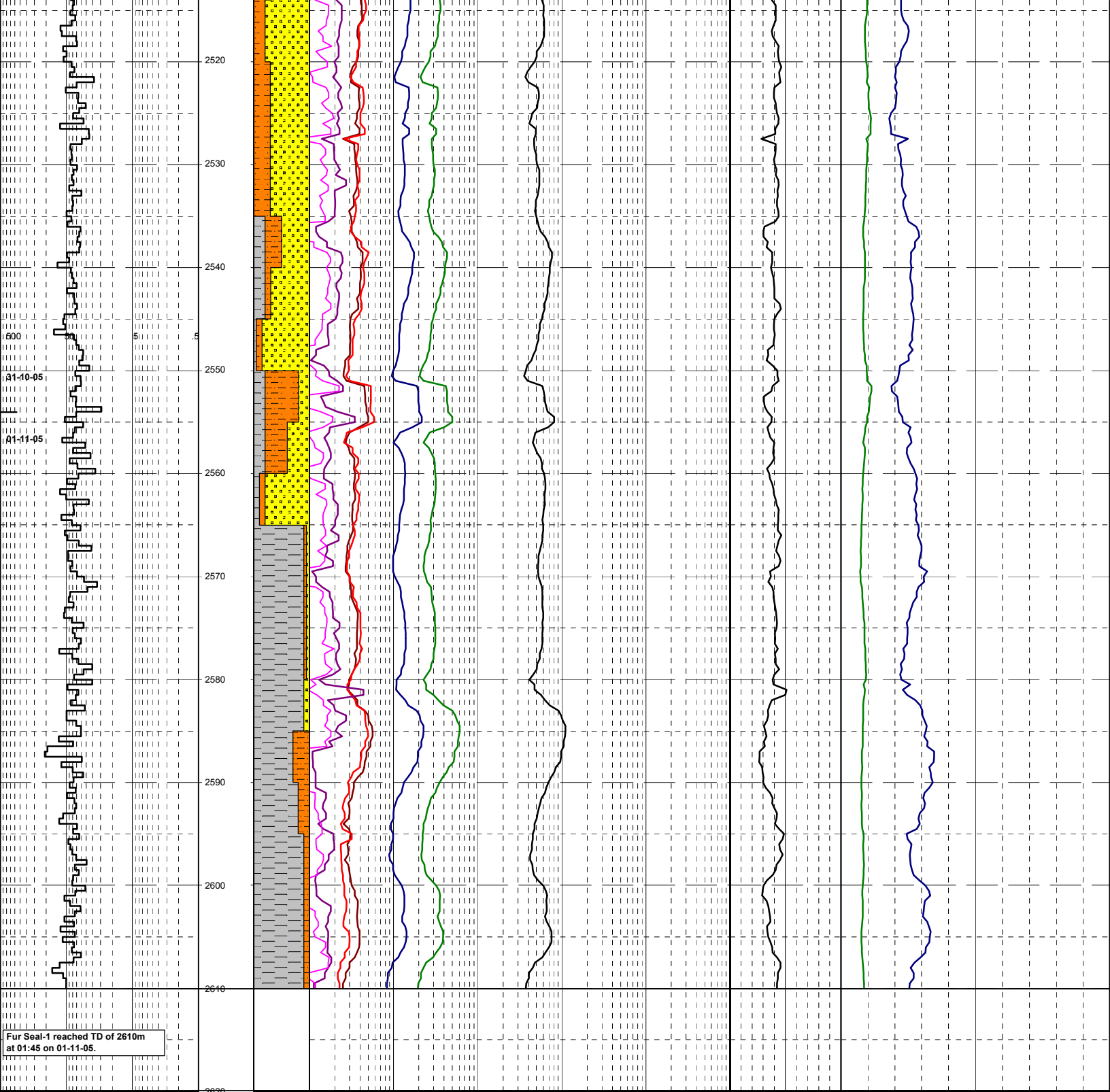












Fur Seal-1 reached TD of 2610m  
at 01:45 on 01-11-05.

