



Company: Esso Australia Pty Ltd.

Well: A-21A

Field: Flounder

Rig: Prod 4 / Crane

Country: Australia

2 1/8" Phased Powerjet
Perforation
7 5/8" MPBT Plug

Prod 4 / Crane
Flounder
Gippsland
A-21A
Esso Australia Pty Ltd.

LOCATION			
Gippsland	Elev.: K.B. 40.8 m		
Basin	G.L. -93 m		
Bass Strait	D.F. 40.8 m		
Permanent Datum:	M.S.L.	Elev.: 0 m	
Log Measured From:	D.F.	40.8 m	above Perm. Datum
Drilling Measured From:	D.F.		
State: Victoria	Max. Well Deviation 60 deg	Longitude 148 26' 17.304" S	Latitude 038 18' 44.786" E

Logging Date 12-Sep-2008

Run Number One

Depth Driller 3335 m

Schlumberger Depth 3335 m

Bottom Log Interval 3335 m

Top Log Interval 3275 m

Casing Fluid Type Production Fluids

Salinity

Density

Fluid Level 1240 m

BIT/CASING/TUBING STRING

Bit Size 9.875 in

From

To

Casing/Tubing Size 7.625 in

Weight 29.7 lbm/ft

Grade L-80

From 20.43 m

To 3826 m

Maximum Recorded Temperatures 223 degF

Logger On Bottom 12-Sep-2008 14:15

Unit Number 889 Prod4

Recorded By G Wright. S Gilbert

Witnessed By D Madden.

PVT DATA

Oil Density	
Water Salinity	
Gas Gravity	
Bo	
Bw	
1/Bg	
Bubble Point Pressure	
Bubble Point Temperature	
Solution GOR	
Maximum Deviation	60 deg
CEMENTING DATA	
Primary/Squeeze	Primary
Casing String No	
Lead Cement Type	
Volume	
Density	
Water Loss	
Additives	
Tail Cement Type	
Volume	
Density	
Water Loss	
Additives	
Expected Cement Top	

Logging Date

Run Number

Depth Driller

Schlumberger Depth

Bottom Log Interval

Top Log Interval

Casing Fluid Type

Salinity

Density

Fluid Level

BIT/CASING/TUBING STRING

Bit Size

From

To

Casing/Tubing Size

Weight

Grade

From

To

Maximum Recorded Temperatures

Logger On Bottom 14:15

Unit Number 889 Prod4

Recorded By G Wright. S Gilbert

Witnessed By D Madden.

DEPTH SUMMARY LISTING

Date Created: 5-SEP-2008 12:54:08

Depth System Equipment

Depth Measuring Device		Tension Device		Logging Cable	
Type:	IDW-BE	Type:	PSDS/OSDS	Type:	2-32ZT
Serial Number:	6373	Serial Number:	-999	Serial Number:	208196
Calibration Date:	01-Dec-2007	Calibration Date:	02-Sep-08	Length:	6939.99 M
Calibrator Serial Number:	9	Calibrator Serial Number:	1174	Conveyance Method: Wireline Rig Type: Rigless	
Calibration Cable Type:	2-32ZT	Calibration Gain:	1.00		
Wheel Correction 1:	-2	Calibration Offset:	0.00		
Wheel Correction 2:	-4				

Depth Control Parameters

Log Sequence:	Subsequent Log In the Well
Reference Log Name:	FLA A21a Petrophysical Analysis.
Reference Log Run Number:	1
Reference Log Date:	10-Oct-2004

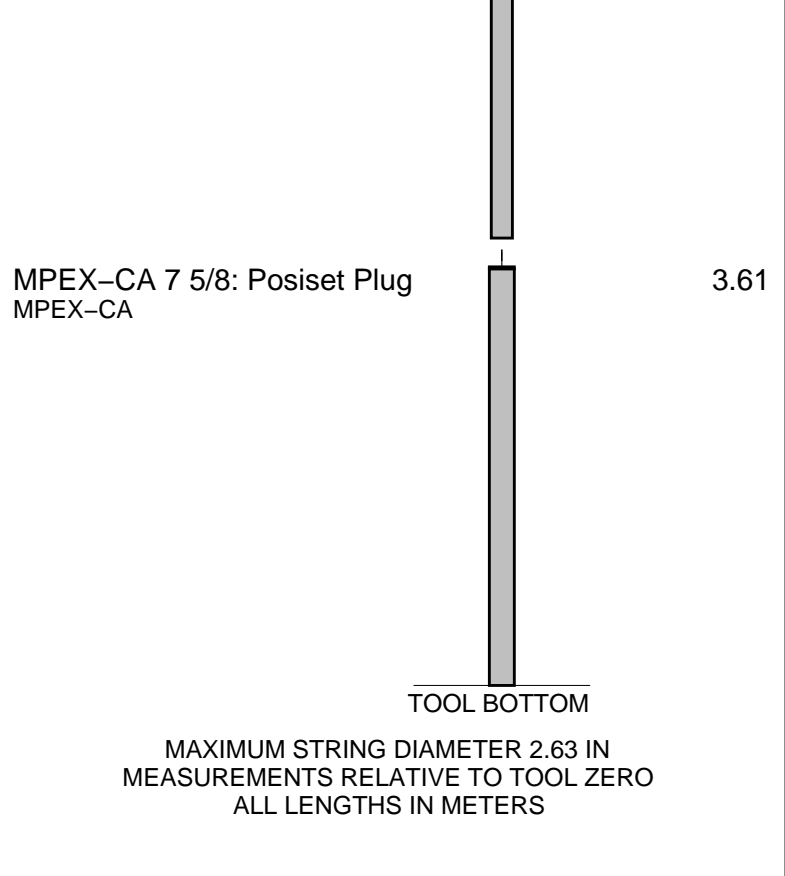
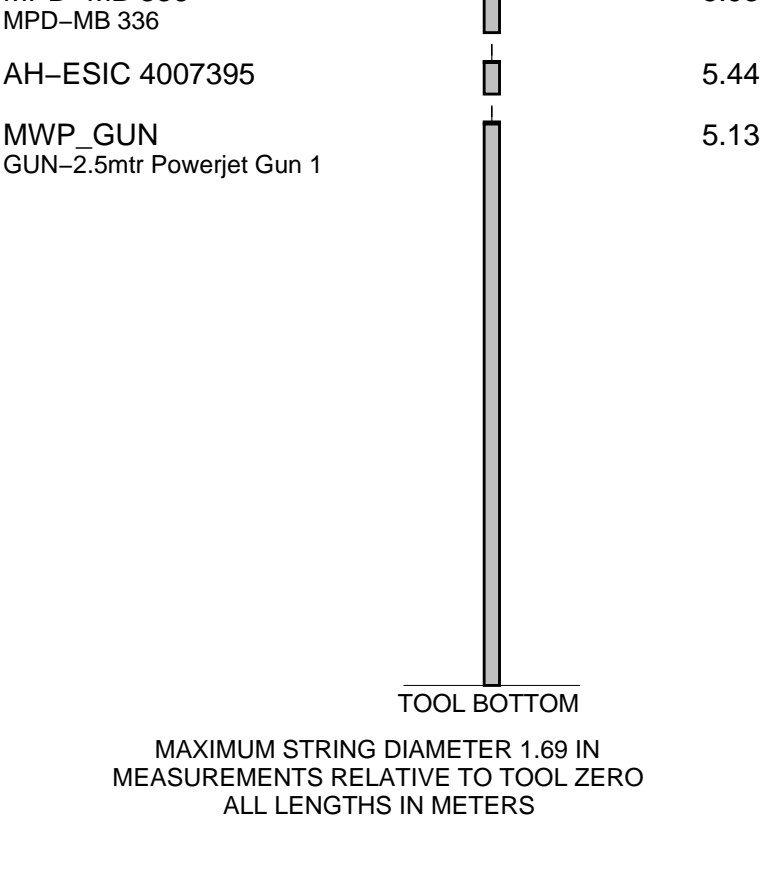
Depth Control Remarks

1. IDW-BE 6373 used as primary depth control.
2. Z-Chart used as back-up.
3.
4.
5.
6.

DISCLAIMER

THE USE OF AND RELIANCE UPON THIS RECORDED-DATA BY THE HEREIN NAMED COMPANY (AND ANY OF ITS AFFILIATES, PARTNERS, REPRESENTATIVES, AGENTS, CONSULTANTS AND EMPLOYEES) IS SUBJECT TO THE TERMS AND CONDITIONS AGREED UPON BETWEEN SCHLUMBERGER AND THE COMPANY, INCLUDING: (a) RESTRICTIONS ON USE OF THE RECORDED-DATA; (b) DISCLAIMERS AND WAIVERS OF WARRANTIES AND REPRESENTATIONS REGARDING COMPANY'S USE OF AND RELIANCE UPON THE RECORDED-DATA; AND (c) CUSTOMER'S FULL AND SOLE RESPONSIBILITY FOR ANY INFERENCE DRAWN OR DECISION MADE IN CONNECTION WITH THE USE OF THIS RECORDED-DATA.

OTHER SERVICES1
OS1: None
OS2:
OS3:
OS4:
OS5:
REMARKS: RUN NUMBER 1
Log correlated to Solar log dated 25 Oct 2005, provided by the client.
Maximum well deviation = 60 degrees at 757m MDKB.
Run one was a 2.5mtr 2 1/8" phased powerjet gun at 6 shots per foot.
Interval perforated was 3324m to 3326.5m MDKB.
SBHP = 3301 psia, SBHT = 220.6 degf.
No noticable change in temperature or pressure after firing the gun.
Run # 2: Run a 2 1/2" Dummy Plug to LWD. TAGGED @ 3337m MDKB.

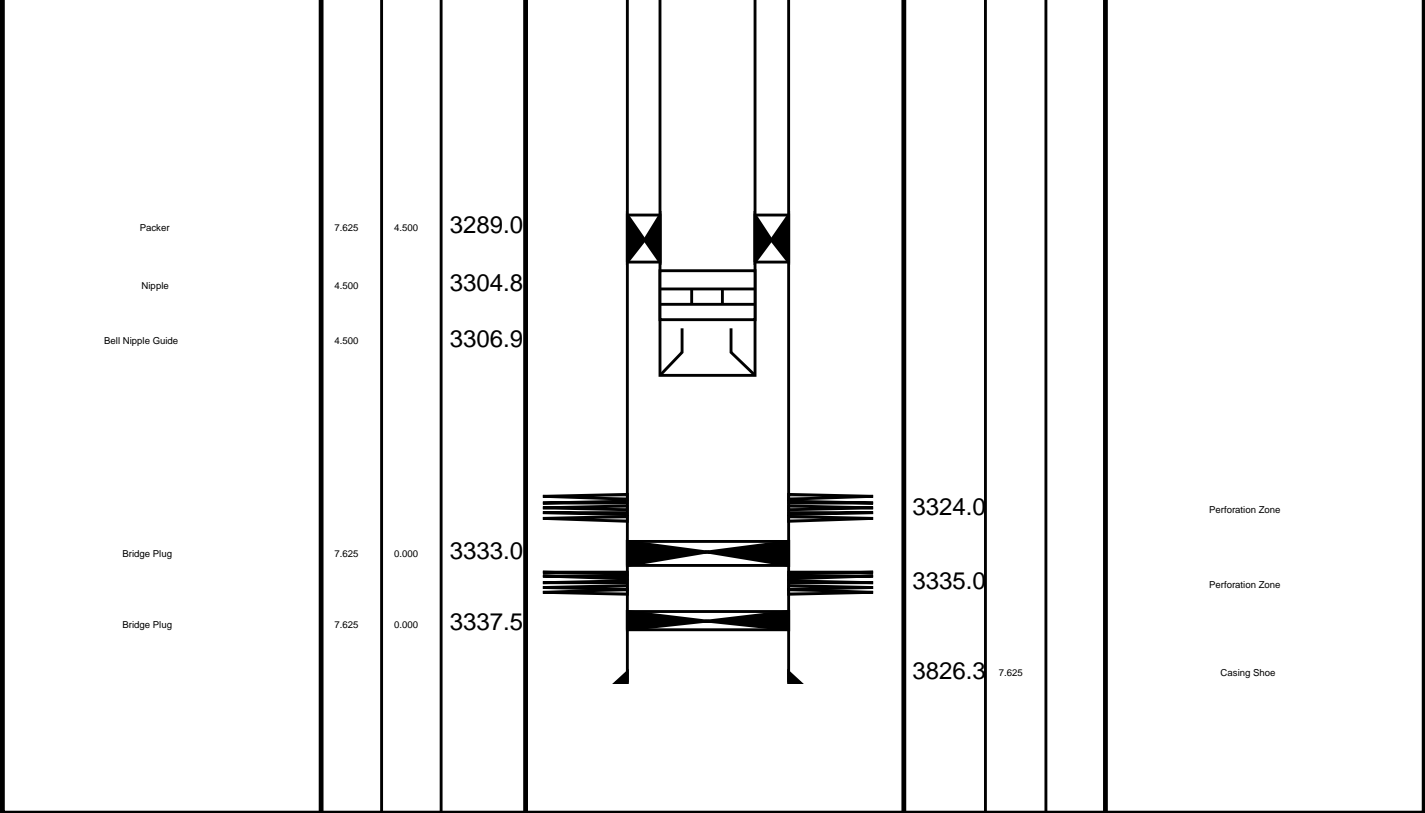


Client: ExxonMobil
Well: FLA A-21a
Field: Flounder
State: Victoria
Country: Australia

Rig Name: Flounder
Reference Datum: Kelly Bushing
Elevation: 12.4 m

Drawing Date: 4/Dec/2005
API #:

Production String	(in)		(m)	Well Schematic	(m)		(in)	Casing String
	OD	ID			MD	OD	ID	
Tubing Hanger	13.375	4.500	19.3		20.4	13.375	7.625	Casing String
Tubing	4.500		19.3		20.4	13.375	7.625	Liner Hanger
Shutin Valve	4.500		450.1					
Gas Lift Mandrel	4.500		950.5		750.0	13.375		Casing Shoe
Gas Lift Mandrel	4.500		1660.7					
Gas Lift Mandrel	4.500		1814.2					



Job Events Summary

MAXIS Field Log

Schlumberger Job Event Summary

Time	Elapsed Time	Depth (M)	File
Log Pass (up)	12-Sep-2008 14:23	000:05	3330.2 - 3302.5 PERFO_010LUP
Log Pass (up)	12-Sep-2008 14:31	000:40	3324.3 - 3293.7 PERFO_011LUP
Station Log	12-Sep-2008 14:34	000:33	3320.4 - 5.0 PERFO_012LTP
Log Pass (up)	13-Sep-2008 11:07	000:01	3312.9 - 3303.6 CCL_031LUP
Simulated Log	13-Sep-2008 11:13	000:36	CCL_032LUP
Log Pass (up)	13-Sep-2008 11:50	000:04	3322.8 - 3287.9 CCL_033LUP
Log Pass (up)	13-Sep-2008 14:12	000:09	3321.9 - 3270.0 PERFO_040LUP
Log Pass (up)	13-Sep-2008 16:03	000:06	3323.1 - 3273.9 PERFO_043LUP



Cement Dump Pass

MAXIS Field Log

Output DLIS Files

DEFAULT PERFO_043LUP FN:42 PRODUCER 13-Sep-2008 16:03 3323.1 M 3273.9 M

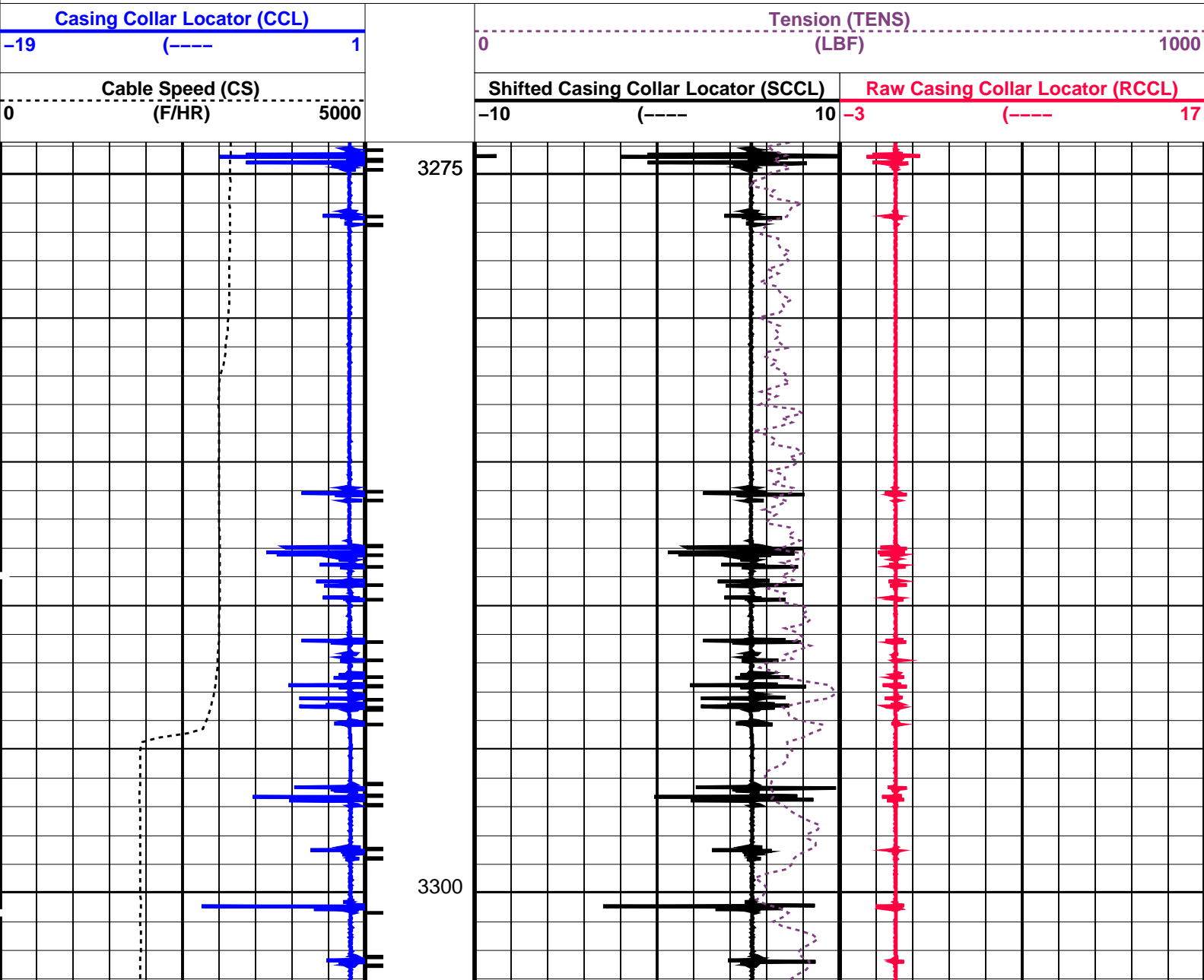
OP System Version: 15C0-309
MCM

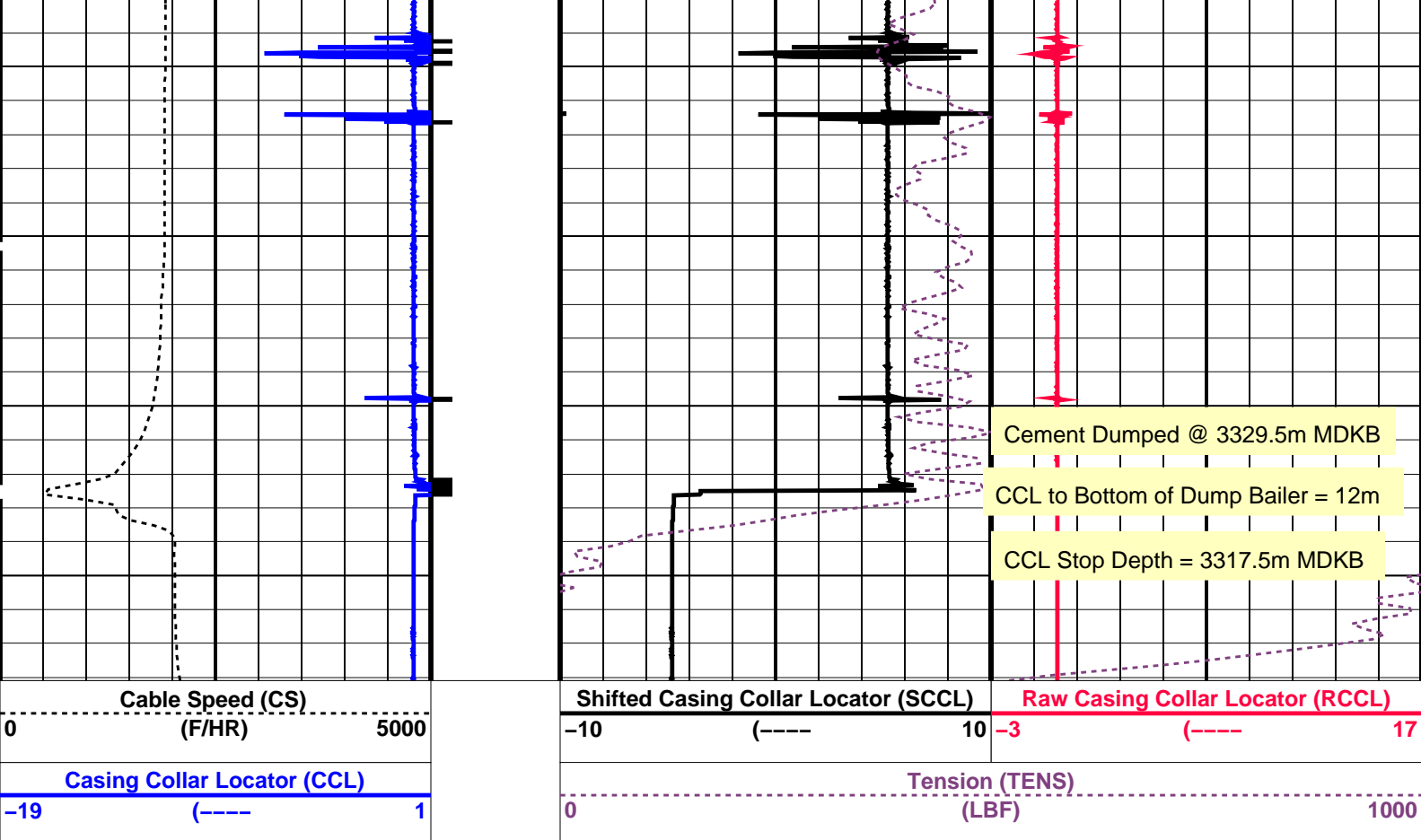
SHM_GUN SRPC-3546-Q1_2008_OP15 CCL-L SRPC-3546-Q1_2008_OP15

PIP SUMMARY

└─ Casing Collars

Time Mark Every 60 S





PIP SUMMARY

← Casing Collars

Time Mark Every 60 S

Parameters

DLIS Name	Description	Value
CCL-L: Casing Collar Locator		
CCLD	CCL reset delay	12 IN
CCLT	CCL Detection Level	0.3 V

Format: PERFO_1 Vertical Scale: 1:200

Graphics File Created: 13-Sep-2008 16:03

OP System Version: 15C0-309
MCM

SHM_GUN SRPC-3546-Q1_2008_OP15 CCL-L SRPC-3546-Q1_2008_OP15

Output DLIS Files

DEFAULT PERFO_043LUP FN:42 PRODUCER 13-Sep-2008 16:03

Schlumberger

Water Dump Pass

MAXIS Field Log

Output DLIS Files

OP System Version: 15C0-309

MCM

SHM_GUN

SRPC-3546-Q1_2008_OP15

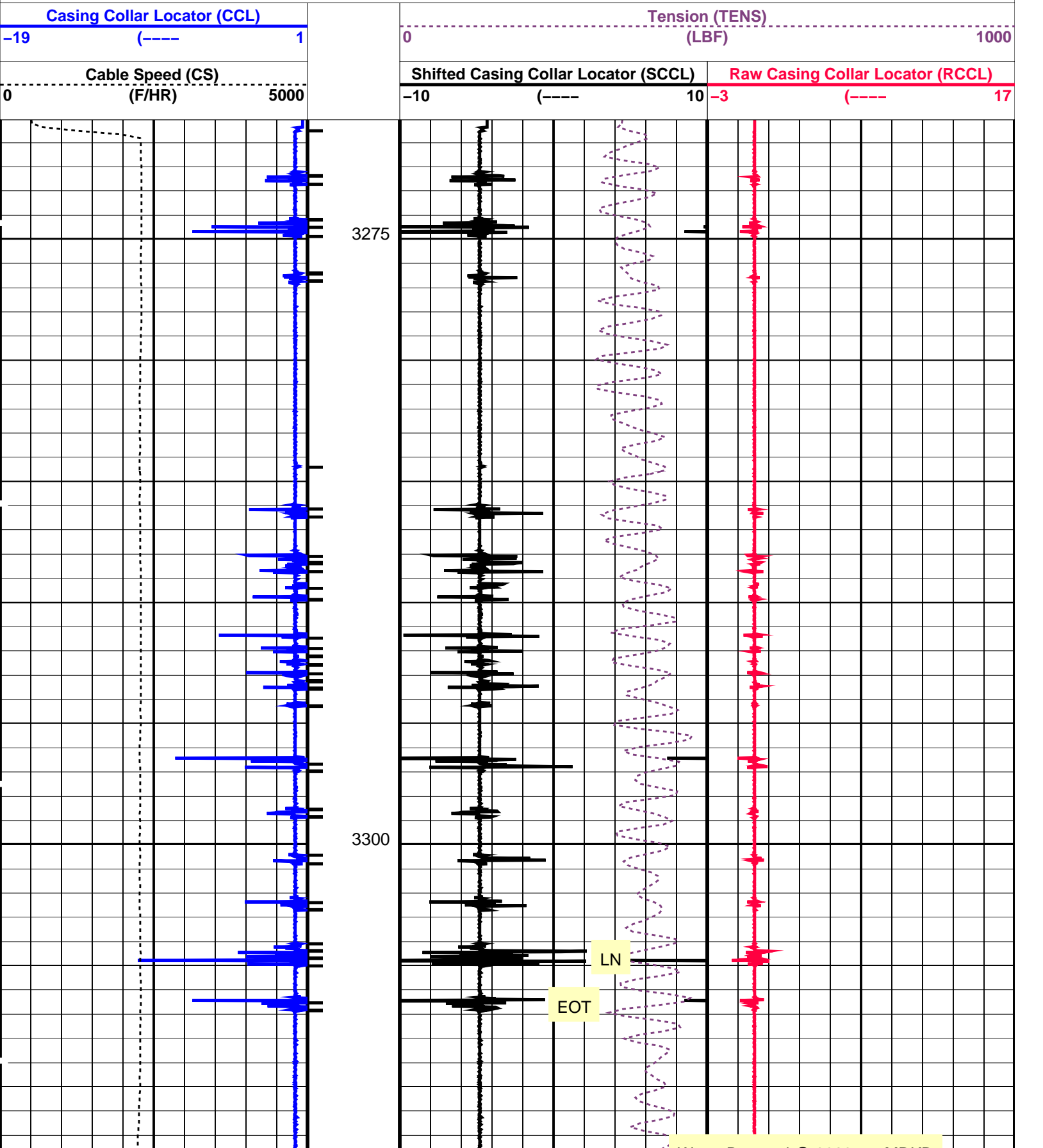
CCL-L

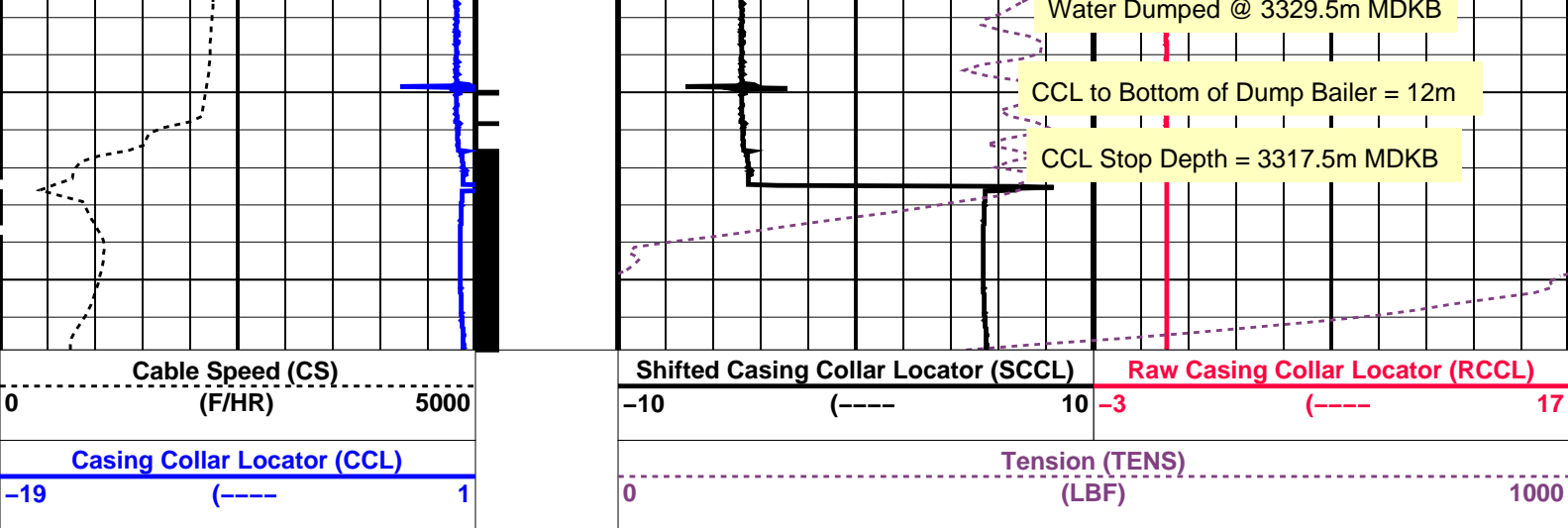
SRPC-3546-Q1_2008_OP15

PIP SUMMARY

└─ Casing Collars

Time Mark Every 60 S





PIP SUMMARY

Time Mark Every 60 S

Parameters

DLIS Name	Description	Value
CCLD	CCL-L: Casing Collar Locator	12 IN
CCLT	CCL reset delay	0.3 V
	CCL Detection Level	

Format: PERFO_1 Vertical Scale: 1:200

Graphics File Created: 13-Sep-2008 14:12

OP System Version: 15C0-309
MCM

SHM_GUN SRPC-3546-Q1_2008_OP15 CCL-L SRPC-3546-Q1_2008_OP15

Output DLIS Files

DEFAULT PERFO_040LUP FN:39 PRODUCER 13-Sep-2008 14:12

Schlumberger

Log Away From Plug Setting
@ 3330m MDKB

MAXIS Field Log

Output DLIS Files

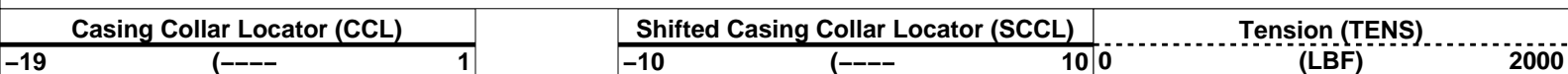
DEFAULT CCL_033LUP FN:32 PRODUCER 13-Sep-2008 11:50 3322.8 M 3287.9 M

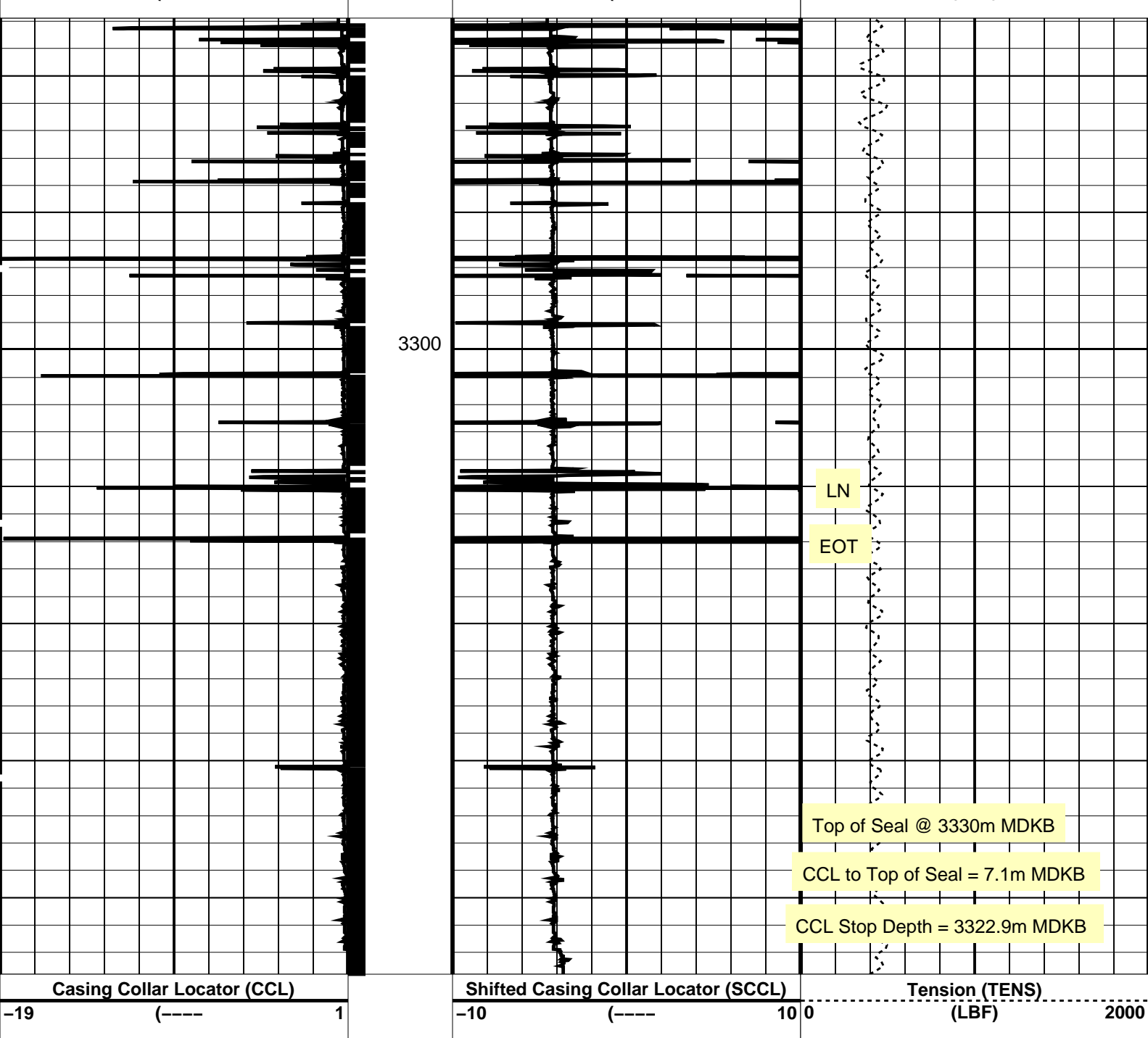
OP System Version: 15C0-309
MCM

MPEX-CA SRPC-3546-Q1_2008_OP15 MPSU-CA SRPC-3546-Q1_2008_OP15
CCL-L SRPC-3546-Q1_2008_OP15

PIP SUMMARY

Time Mark Every 60 S





PIP SUMMARY

Time Mark Every 60 S

Casing Collars

Parameters		
DLIS Name	Description	Value
CCLD	CCL-L: Casing Collar Locator	12 IN
CCLT	CCL reset delay	0.3 V
CCLT	CCL Detection Level	

Format: PERFO Vertical Scale: 1:200 Graphics File Created: 13-Sep-2008 11:50

OP System Version: 15C0-309

MCM

MPEX-CA	SRPC-3546-Q1_2008_OP15	MPSU-CA	SRPC-3546-Q1_2008_OP15
CCL-L	SRPC-3546-Q1_2008_OP15		

Output DLIS Files

DEFAULT	CCL_033LUP	FN:32	PRODUCER	13-Sep-2008 11:50
---------	------------	-------	----------	-------------------



7 5/8" Posiset Plug
(top of seal @ 3330m MDKB)

MAXIS Field Log

Output DLIS Files

DEFAULT

CCL_032LUP

FN:31

PRODUCER

13-Sep-2008 11:13

OP System Version: 15C0-309

MCM

MPEX-CA
CCL-L

SRPC-3546-Q1_2008_OP15
SRPC-3546-Q1_2008_OP15

MPSU-CA

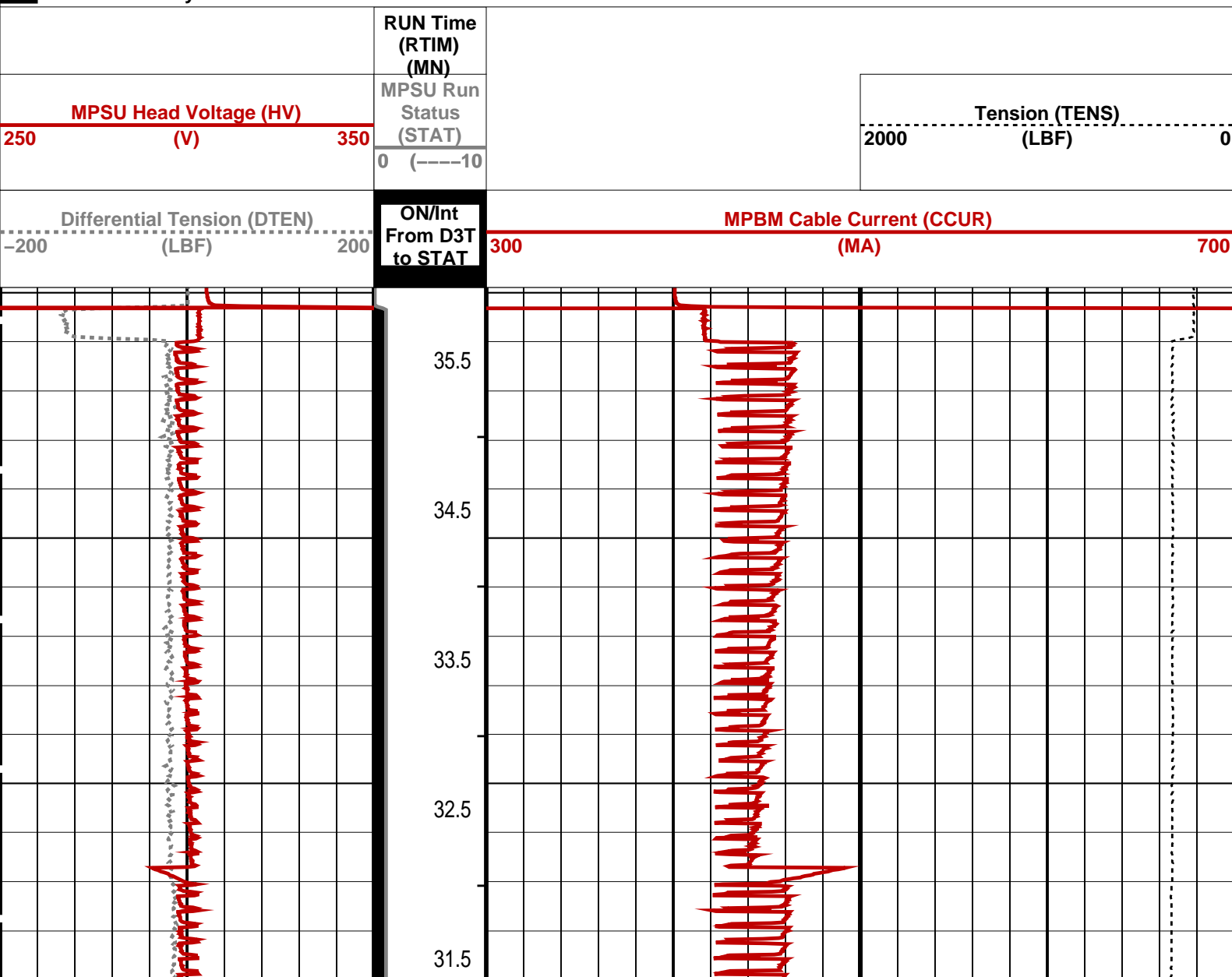
SRPC-3546-Q1_2008_OP15

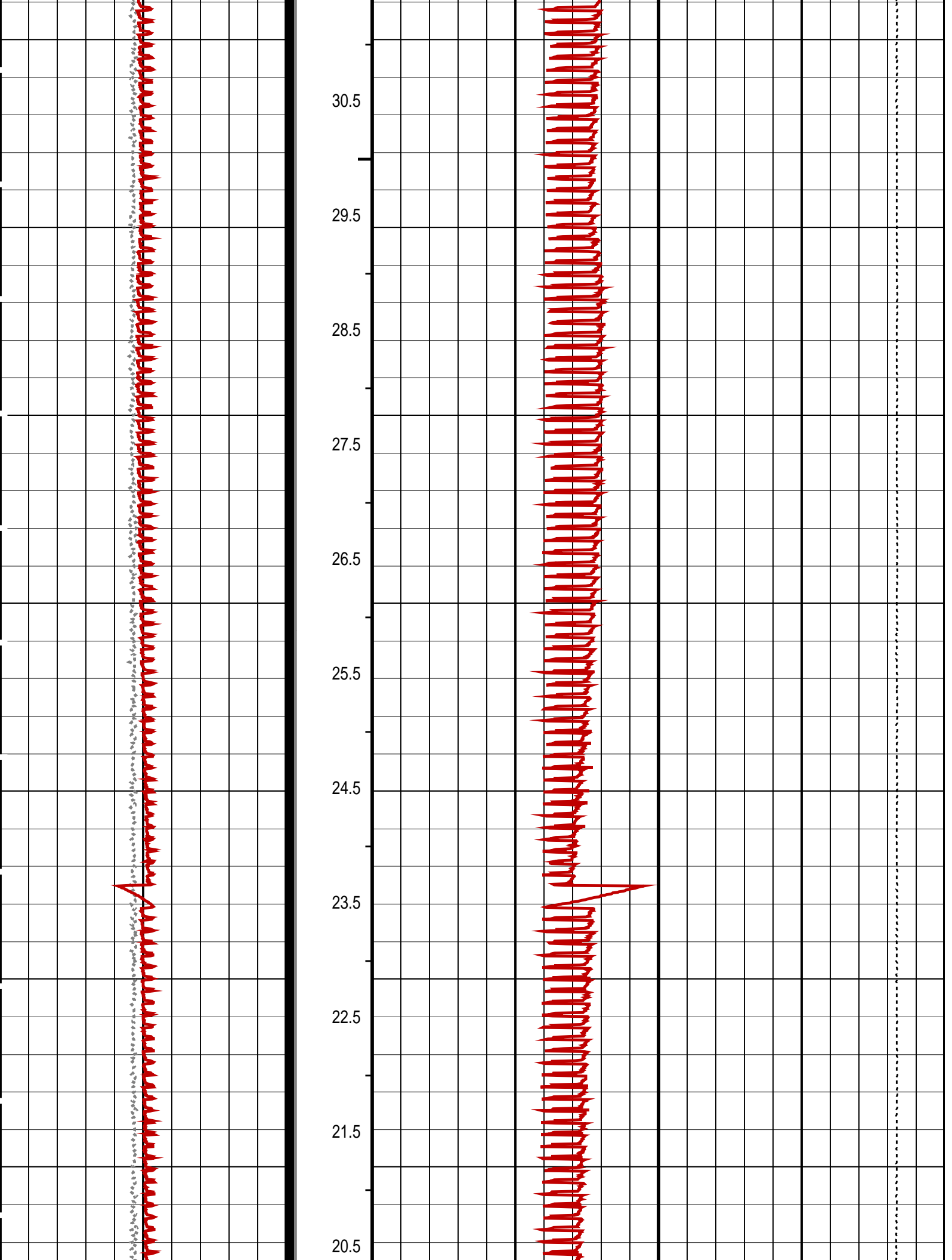
PIP SUMMARY

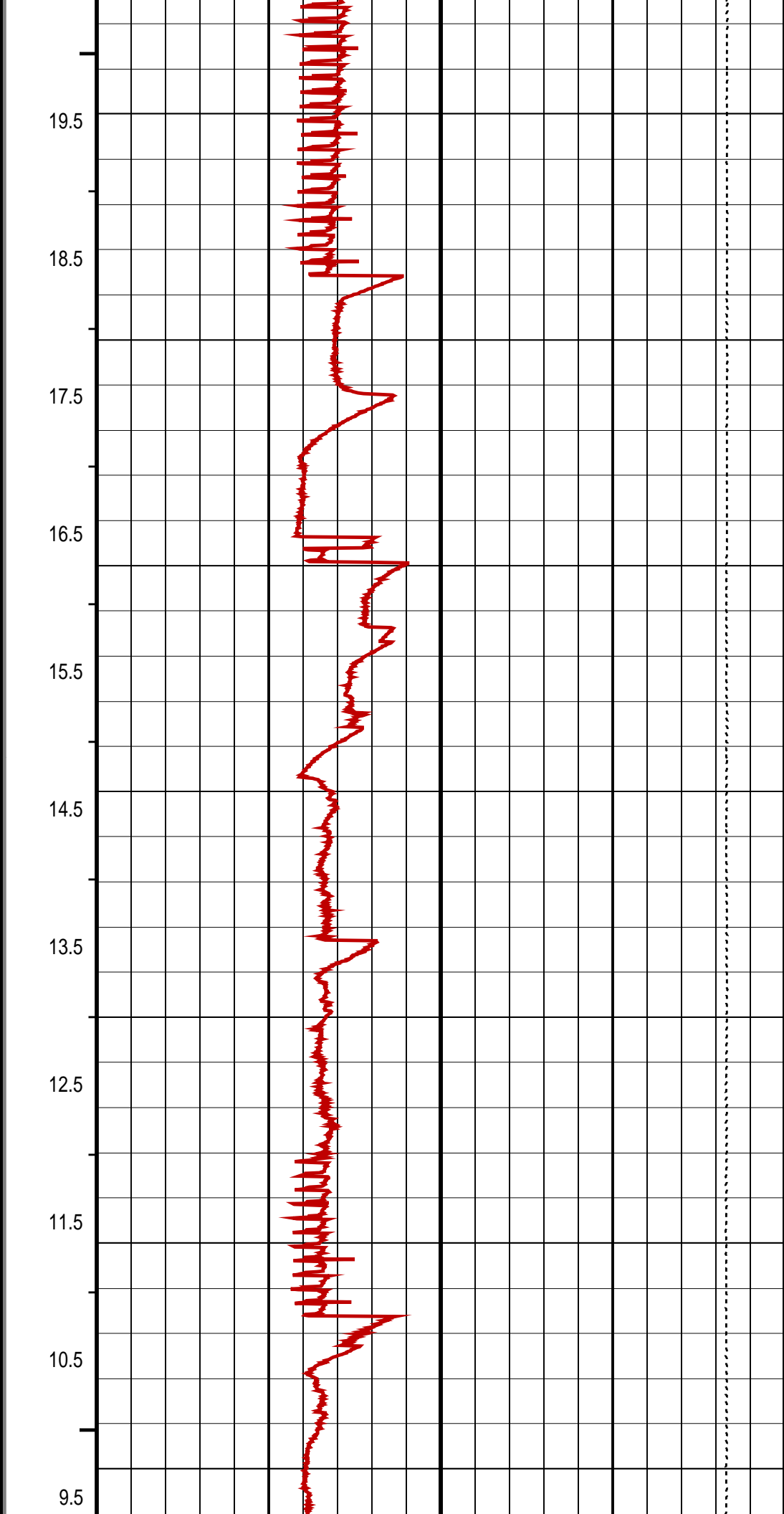
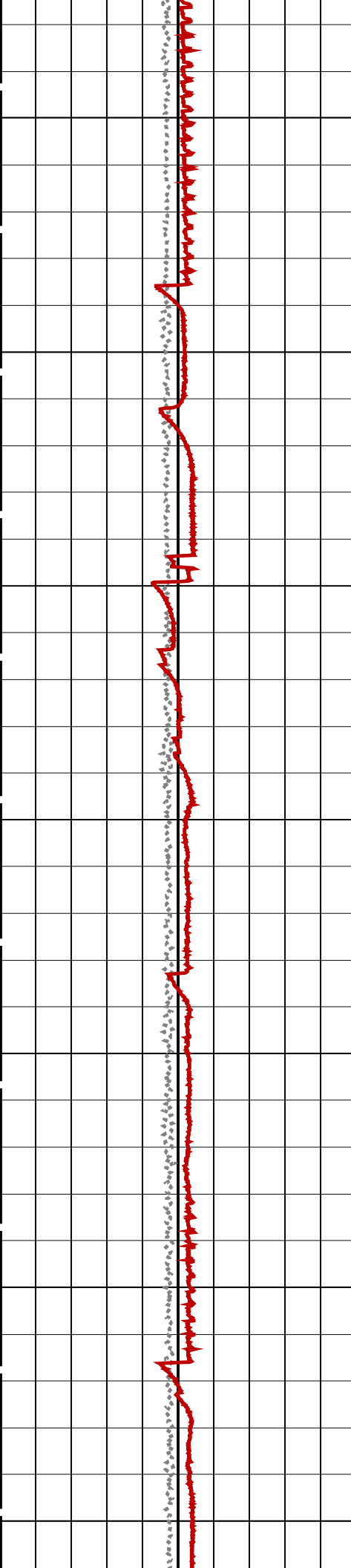
→ MPSU Run Time Every 1 MN

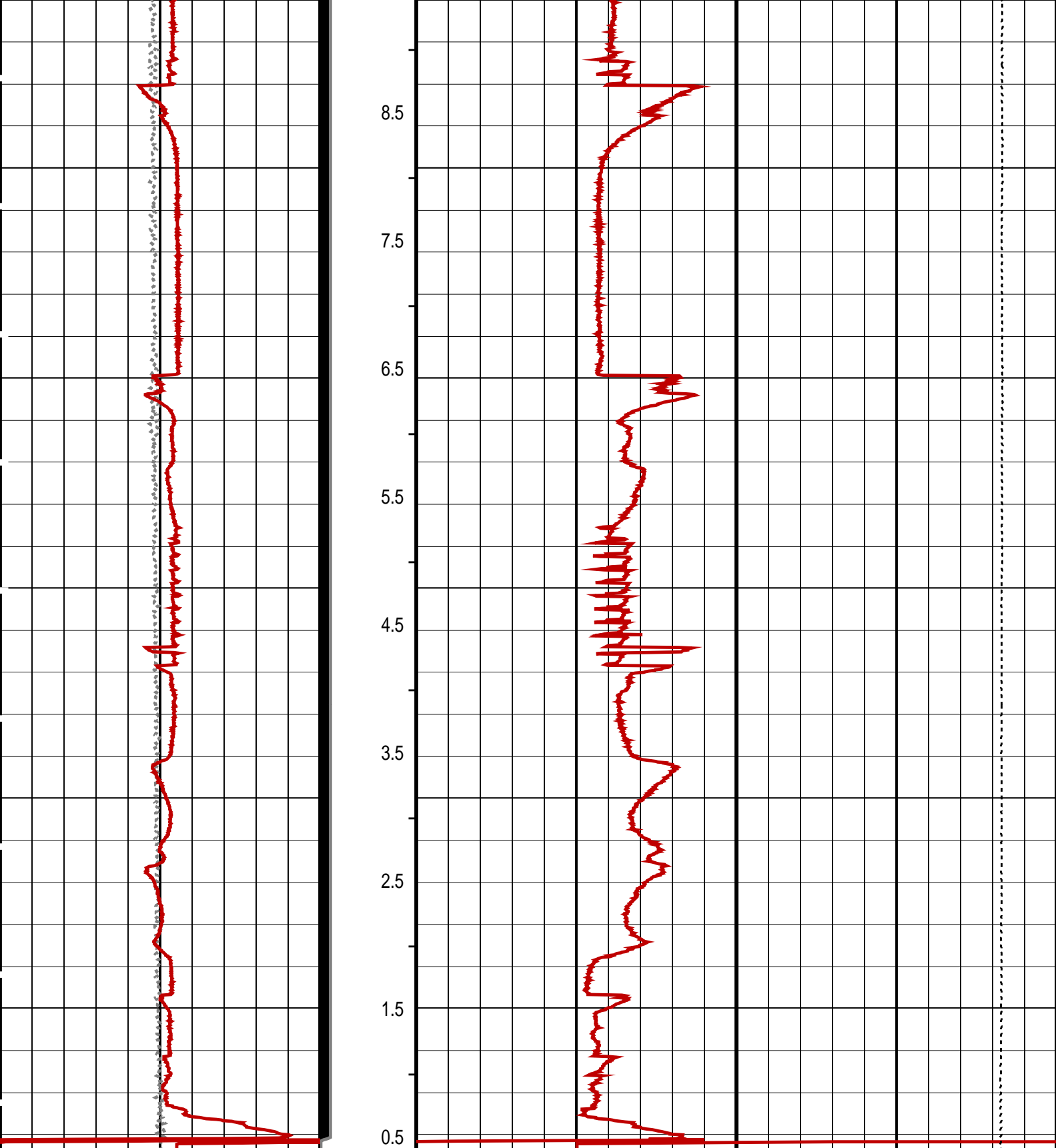
→ MPSU Run Time Every 10 MN

Time Mark Every 60 S









Differential Tension (DTEN) (LBF)	ON/Int From D3T to STAT	MPBM Cable Current (CCUR) (MA)
-200 200	300 700	
MPSU Head Voltage (HV) (V)	MPSU Run Status (STAT)	Tension (TENS) (LBF)
250 350	0 (----10	2000 0
	RUN Time (RTIM) (MN)	

Time Mark Every 60 S

Parameters

DLIS Name	Description	Value
IPUMP	MPSU-CA: MECHANICAL PLUGBACK SETTING UNIT Intensifier Pump	TRUE

Format: MPBT Vertical Scale: 1:600 Graphics File Created: 13-Sep-2008 11:13

OP System Version: 15C0-309

MCM

MPEX-CA	SRPC-3546-Q1_2008_OP15	MPSU-CA	SRPC-3546-Q1_2008_OP15
CCL-L	SRPC-3546-Q1_2008_OP15		

Output DLIS Files

DEFAULT	CCL_032LUP	FN:31	PRODUCER	13-Sep-2008 11:13
---------	------------	-------	----------	-------------------

OP System Version: 15C0-309

MCM

MPEX-CA	SRPC-3546-Q1_2008_OP15	MPSU-CA	SRPC-3546-Q1_2008_OP15
CCL-L	SRPC-3546-Q1_2008_OP15		

PIP SUMMARY

└ Casing Collars

Time Mark Every 60 S

Parameters

DLIS Name	Description	Value
CCLD	CCL-L: Casing Collar Locator	12 IN
CCLT	CCL reset delay	0.3 V
	CCL Detection Level	

Format: PERFO Vertical Scale: 1:200

Graphics File Created: 13-Sep-2008 11:07

OP System Version: 15C0-309

MCM

MPEX-CA	SRPC-3546-Q1_2008_OP15	MPSU-CA	SRPC-3546-Q1_2008_OP15
CCL-L	SRPC-3546-Q1_2008_OP15		

Output DLIS Files

DEFAULT	CCL_031LUP	FN:30	PRODUCER	13-Sep-2008 11:07
---------	------------	-------	----------	-------------------

Schlumberger

2.13" Dummy Plug Pass

MAXIS Field Log

Company: Esso Australia Pty Ltd.

Well: A-21A

Input DLIS Files

DEFAULT	PSP_019LUP	FN:18	PRODUCER	13-Sep-2008 08:49	3339.1 M	3219.6 M
---------	------------	-------	----------	-------------------	----------	----------

Output DLIS Files

DEFAULT	PSP_020PUP	FN:19	PRODUCER	13-Sep-2008 09:09	3343.0 M	3221.4 M
---------	------------	-------	----------	-------------------	----------	----------

OP System Version: 15C0-309

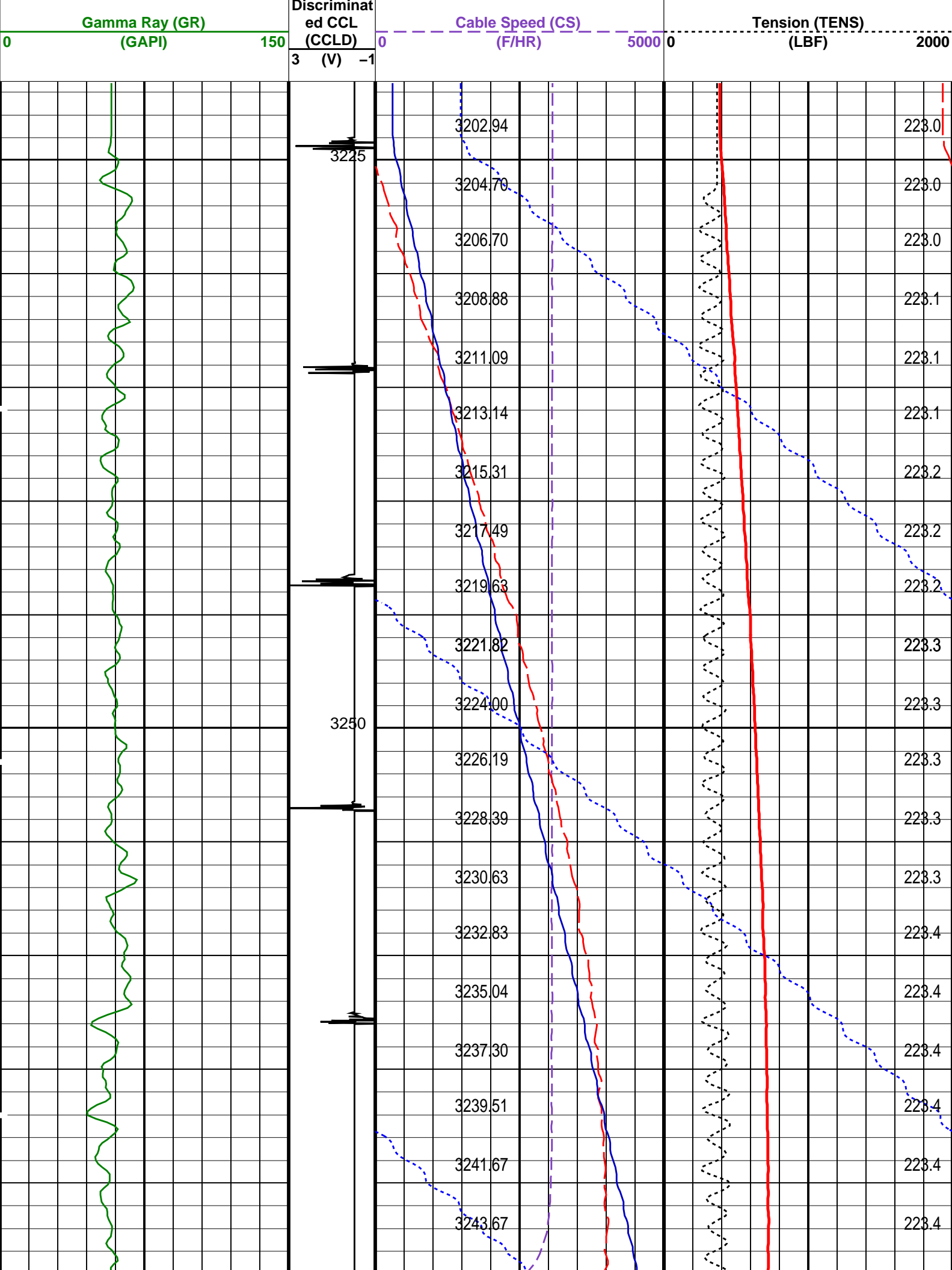
MCM

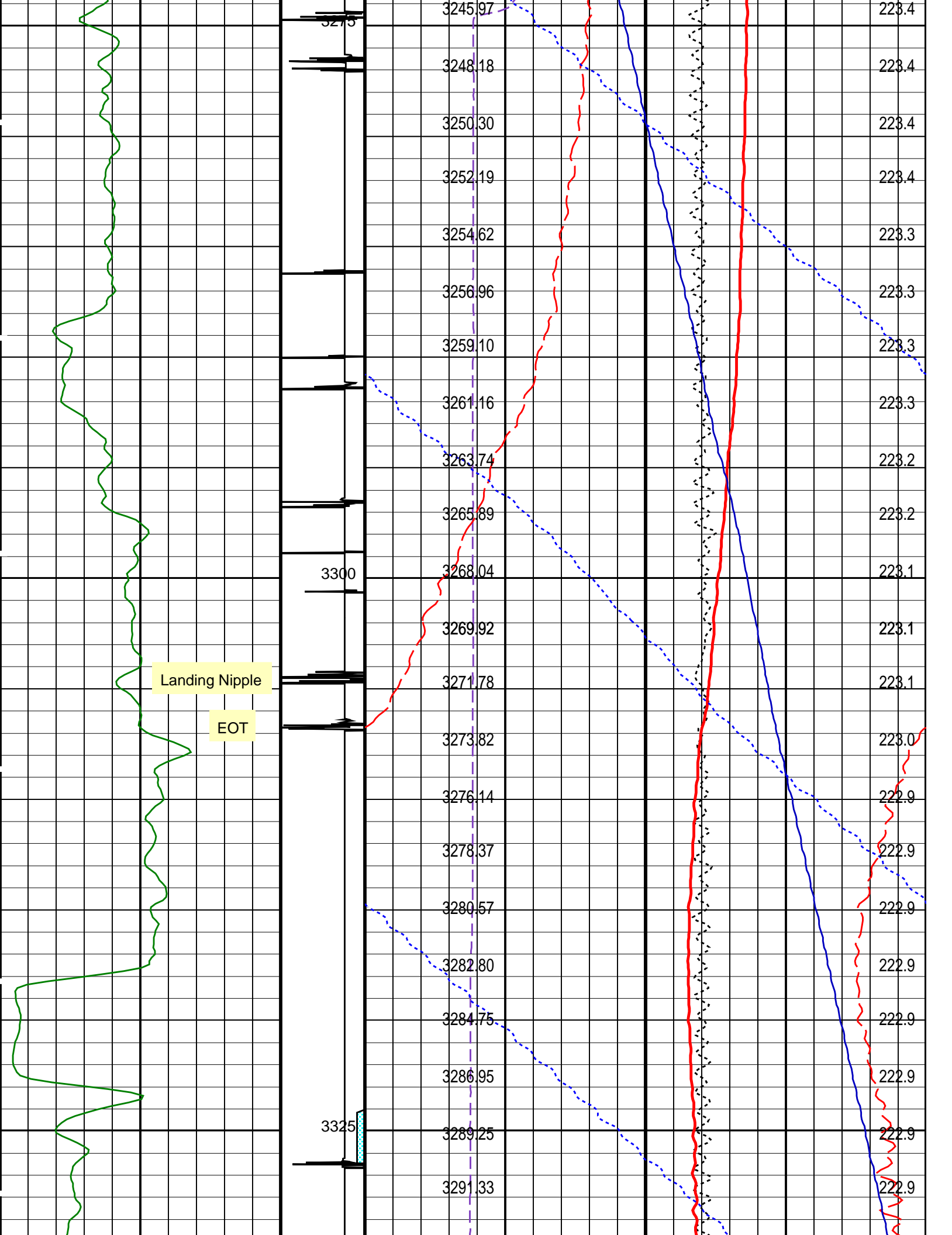
PSPT-B	SRPC-3546-Q1_2008_OP15
--------	------------------------

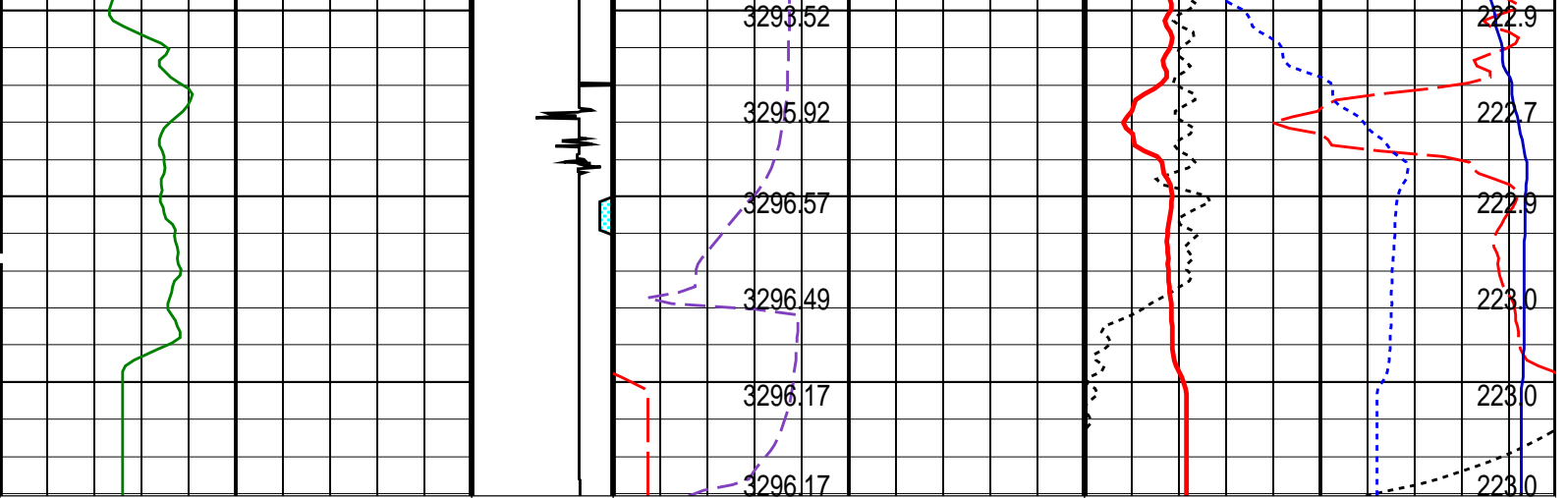
PIP SUMMARY

Time Mark Every 60 S

	Amplified Well Pressure (WPRE)	
	0	20
	(PSIA)	
	Well Pressure (WPRE)	
	3200	3300
	Well Temperature (WTEP)	
	0	1
	(DEGF)	
	Well Pressure (WPRE) (PSIA)	Temperature (WTEP) (DEGF)
	Well Temperature (WTEP)	
Perfo Zone From PERFO CURVE to D3T	220	225
	(DEGF)	







Gamma Ray (GR) (GAPI)		0	150
Discriminat ed CCL (CCLD)		3	(V) -1
Cable Speed (CS) (F/HR)		0	5000
Tension (TENS) (LBF)		0	2000
Perfo Zone From PERFO_ CURVE to D3T		Well Temperature (WTEP) (DEGF)	
		220	225
		Well Pressure (WPRE) (PSIA)	Temperature (WTEP) (DEGF)
		Well Temperature (WTEP) (DEGF)	
		0	1
		Well Pressure (WPRE) (PSIA)	
		3200	3300
		Amplified Well Pressure (WPRE) (PSIA)	
		0	20

PIP SUMMARY

Time Mark Every 60 S

Format: PSP_1 Vertical Scale: 1:200

Graphics File Created: 13-Sep-2008 09:09

OP System Version: 15C0-309
MCM

PSPT-B SRPC-3546-Q1_2008_OP15

Parameters

DLIS Name	Description	Value
DO PP	System and Miscellaneous Depth Offset for Playback Playback Processing	4.0 M NORMAL

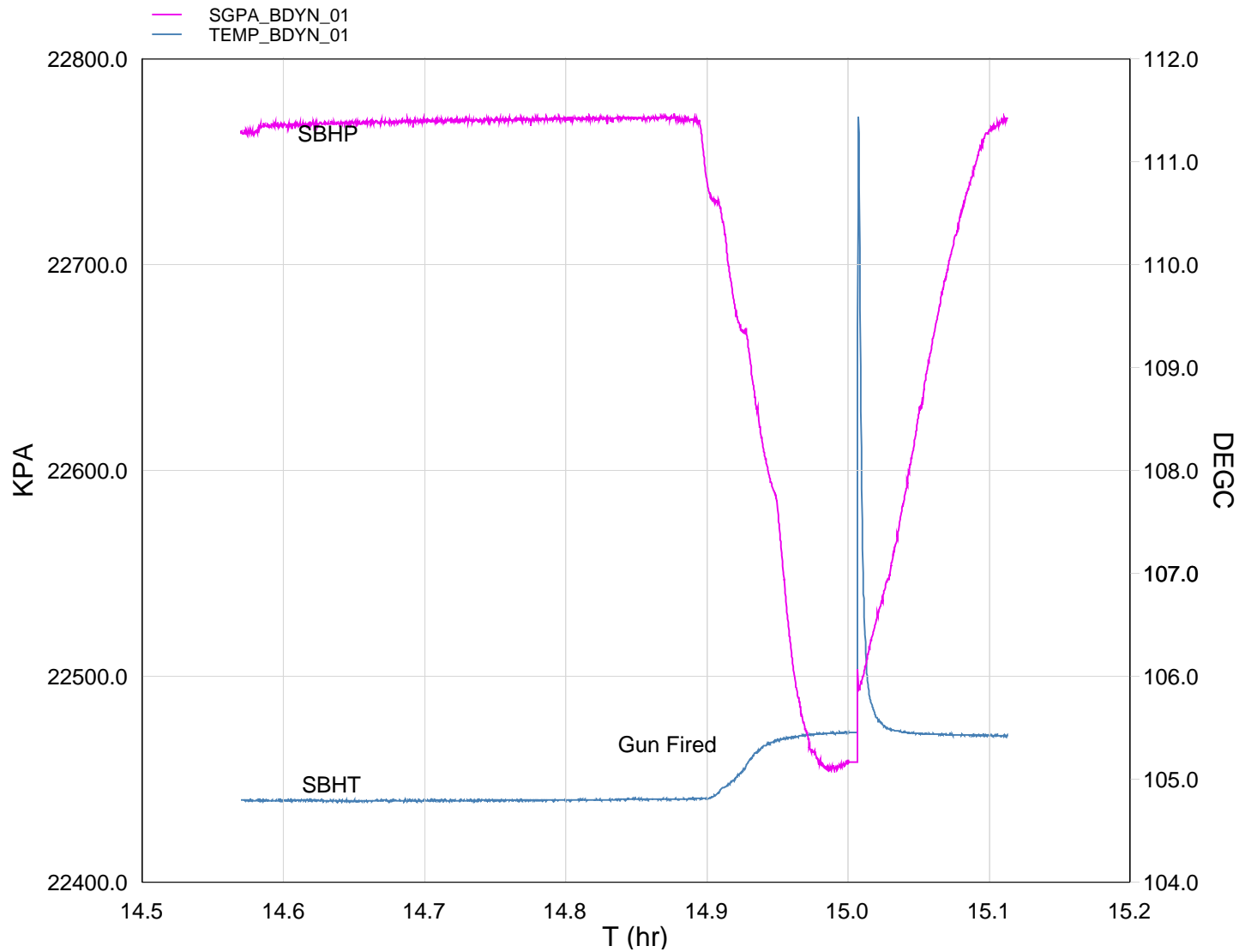
Input DLIS Files

DEFAULT	PSP_019LUP	FN:18	PRODUCER	13-Sep-2008 08:49	3339.1 M	3219.6 M
---------	------------	-------	----------	-------------------	----------	----------

Output DLIS Files

DEFAULT	PSP_020PUP	FN:19	PRODUCER	13-Sep-2008 09:09		
---------	------------	-------	----------	-------------------	--	--

MAXIS Field Log



TIME	DEGF	PSIA
4320.0	221.77	3301.686
4260.0	221.78	3296.964
4200.0	221.79	3290.173
4140.0	221.80	3281.444
4080.0	221.86	3272.275
4020.0	222.36	3265.897
3960.0	221.82	3257.228
3900.0	221.81	3256.963
3840.0	221.76	3261.211
3780.0	221.69	3275.736
3720.0	221.42	3283.939
3660.0	220.92	3291.772
3600.0	220.82	3282.552

3600.0	220.66	3298.559
3540.0	220.65	3302.451
3480.0	220.65	3302.697
3420.0	220.65	3302.726
3360.0	220.65	3302.689
3300.0	220.63	3302.685
3240.0	220.63	3302.586
3180.0	220.63	3302.627
3120.0	220.63	3302.693
3060.0	220.63	3302.512
3000.0	220.63	3302.508
2940.0	220.62	3302.619
2880.0	220.63	3302.504
2820.0	220.63	3302.401
2760.0	220.63	3302.500
2700.0	220.62	3302.303
2640.0	220.62	3302.291
2580.0	220.63	3302.138
2520.0	220.62	3302.216
2460.0	220.64	3302.130
2400.0	220.64	3301.695



GUN # 1
Shooting Pass

MAXIS Field Log

Company: Esso Australia Pty Ltd. Well: A-21A

Output DLIS Files

DEFAULT PERFO_011LUP FN:10 PRODUCER 12-Sep-2008 14:31 3324.3 M 3293.7 M

OP System Version: 15C0-309
MCM

MWP_GUN SRPC-3546-Q1_2008_OP15 MWPT-CA SRPC-3546-Q1_2008_OP15
MWGT-AA SRPC-3546-Q1_2008_OP15

PIP SUMMARY

Time Mark Every 60 S

		Pressure (SGP) (PSIA)
<div> <div>Temperature (TEMP_MWPT) (DEGF)</div> <div> <div>CCL From CCL to T1</div> <div> <div>Gamma Ray (GR) (GAPI)</div> <div> <div>Casing Collar Locator (CCL)</div> <div> <div>Cable Speed (CS)</div> </div> </div> </div> </div> </div>		<div> <div>Tension (TENS) (LBF)</div> <div> <div>Temperature (TEMP_MWPT) (DEGF)</div> <div> <div>Strain Gauge Pressure (SGP) (PSIA)</div> <div> <div>Temperature (TEMP_MWPT) (DEGF)</div> <div> <div>Strain Gauge Pressure (SGP) (PSIA)</div> </div> </div> </div> </div> </div>
0		0
150		2000
1		2
		20
		220
		2250

OP System Version: 15C0-309

MCM

MWP_GUNSRPC-3546-Q1_2008_OP15MWPT-CA

MWGT-AA

SRPC-3546-Q1_2008_OP15

Output DLIS Files

DEFAULT

PERFO_011LUP

FN:10

PRODUCER

12-Sep-2008 14:31



GUN # 1
Correlation Pass

MAXIS Field Log

Company: Esso Australia Pty Ltd.

Well: A-21A

Output DLIS Files

DEFAULT

PERFO_010LUP

FN:9

PRODUCER

12-Sep-2008 14:23

OP System Version: 15C0-309

MCM

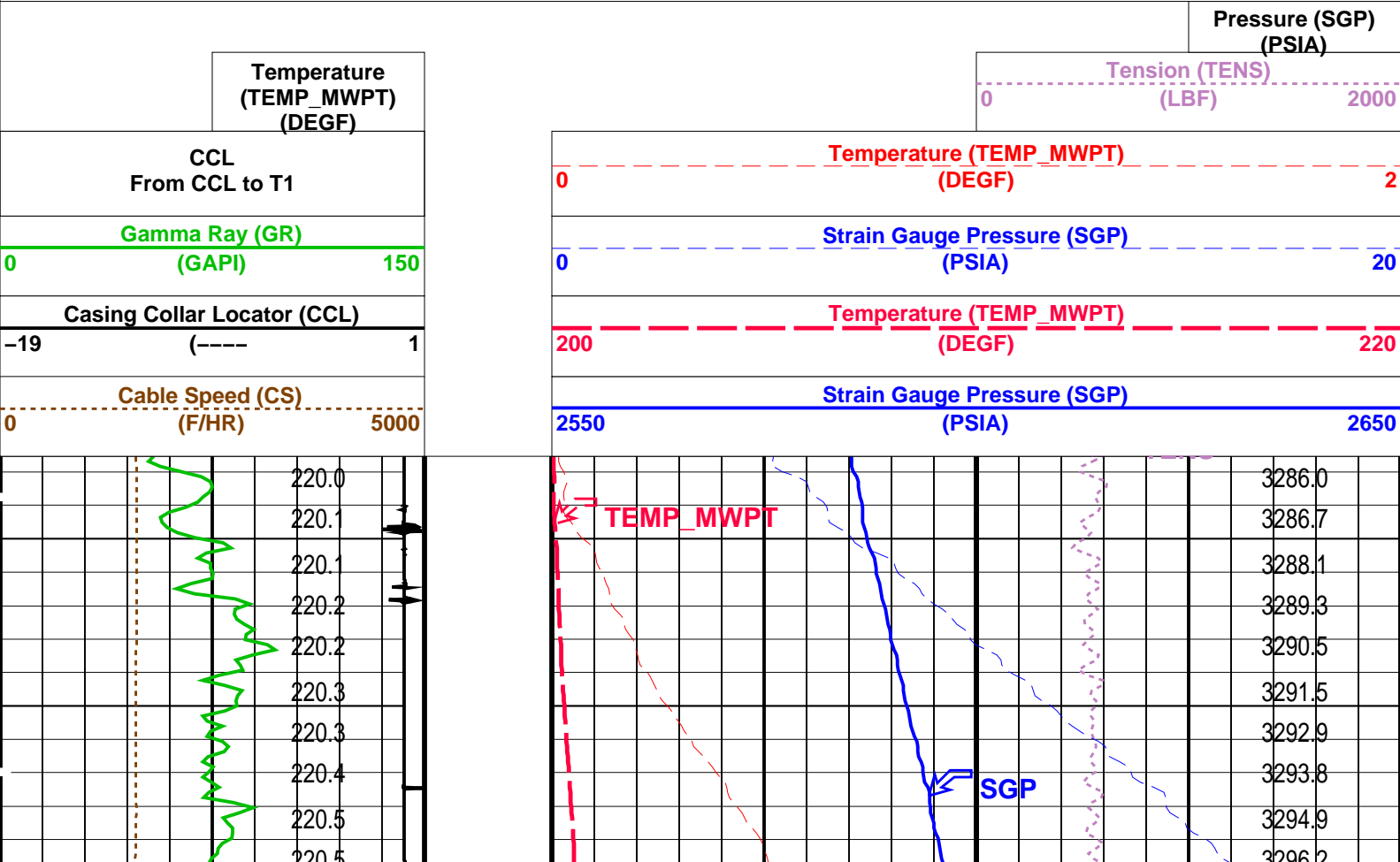
MWP_GUNSRPC-3546-Q1_2008_OP15MWPT-CA

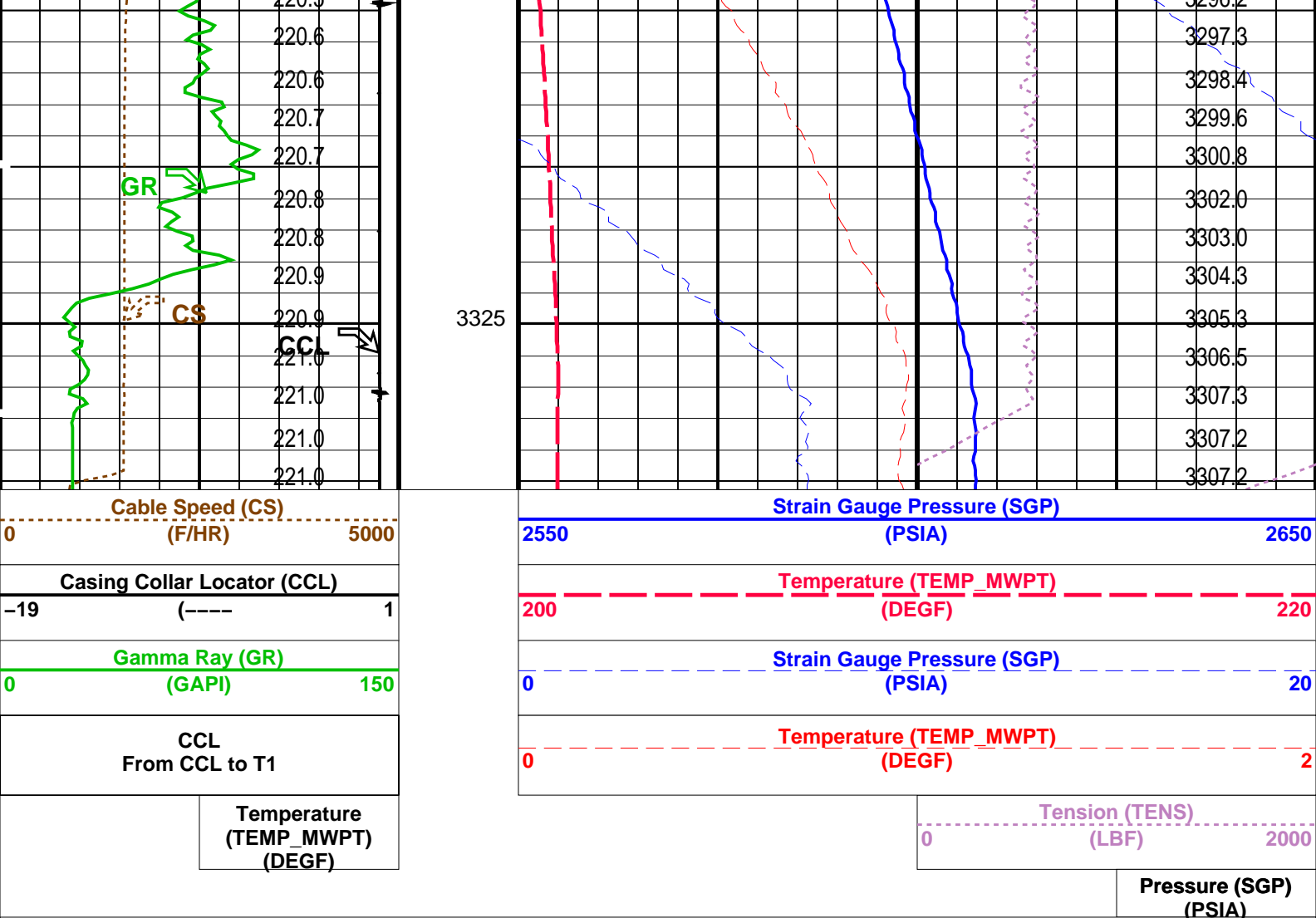
MWGT-AA

SRPC-3546-Q1_2008_OP15

PIP SUMMARY

Time Mark Every 60 S





PIP SUMMARY

Time Mark Every 60 S

Parameters

DLIS Name	Description	Value
MWPT-CA: MEASUREMENT WHILE PERFORATING TOOL		
DEVI_FL_CORR	Deviation Angle for Flow Line Correction	0 DEG
FLD	Flow Line Density	1 G/C3
MWPT_NULL_SOURCE	MWPT NULL Temperature Source	TEMS
MWPT_NULL_TEMP	MWPT NULL Temperature	0.0 DEGC

Format: MWP Vertical Scale: 1:200

Graphics File Created: 12-Sep-2008 14:23

OP System Version: 15C0-309

MCM

MWP_GUN	SRPC-3546-Q1_2008_OP15	MWPT-CA	SRPC-3546-Q1_2008_OP15
MWGT-AA	SRPC-3546-Q1_2008_OP15		

Output DLIS Files

DEFAULT	PERFO_010LUP	FN:9	PRODUCER	12-Sep-2008 14:23
---------	--------------	------	----------	-------------------

Company: Esso Australia Pty Ltd.

Schlumberger

Well: A-21A
Field: Flounder
Rig: Prod 4 / Crane
Country: Australia

2 1/8" Phased Powerjet
Perforation
7 5/8" Mpbtt Plug