

# BestDT\* SonicVision Processing

Run 3 : 1705m - 3220m (1/500)

\* A Mark of Schlumberger

Using the following logs:      sonicVision

COMPANY:      Apache Energy Ltd.  
WELL:            Elver-1  
FIELD:          VIC-PS9  
RIG:             Ocean Patriot  
STATE:          VIC  
COUNTRY:       Australia  
Date Logged:    30-Dec-2008      Date Processed:    31-Dec-2008

FOLD HERE      The well name, location and borehole reference data were furnished by the customer.

All interpretations are opinions based on inferences from electrical or other measurements and we cannot, and do not guarantee the accuracy or correctness of any interpretation, and we shall not, except in the case of gross or willful negligence on our part, be liable or responsible for any loss, costs, damages or expenses incurred or sustained by anyone resulting from any interpretations made by any of our officers, agents or employees. These interpretations are also subject to Clause 4 of our General Terms and Conditions as set out in our current Price Schedule.

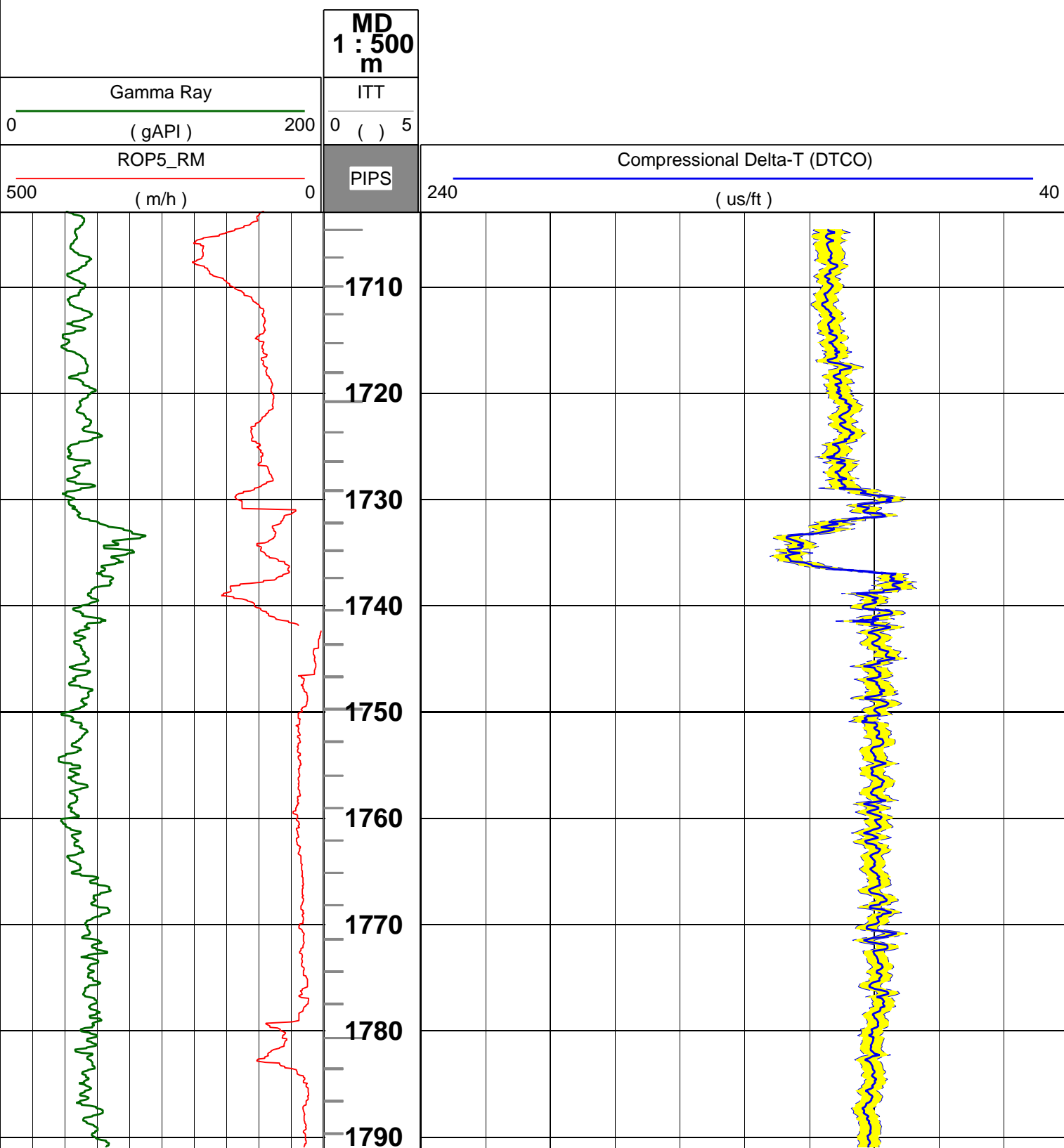
Field Recording:	Location:	Software Version: 13X0-101	Engineer: Oldridge/Calthrop
Office Recording:	ICS Center: Melbourne	Baseline: GF 4.4 DC3	Log Analyst: A. Datey

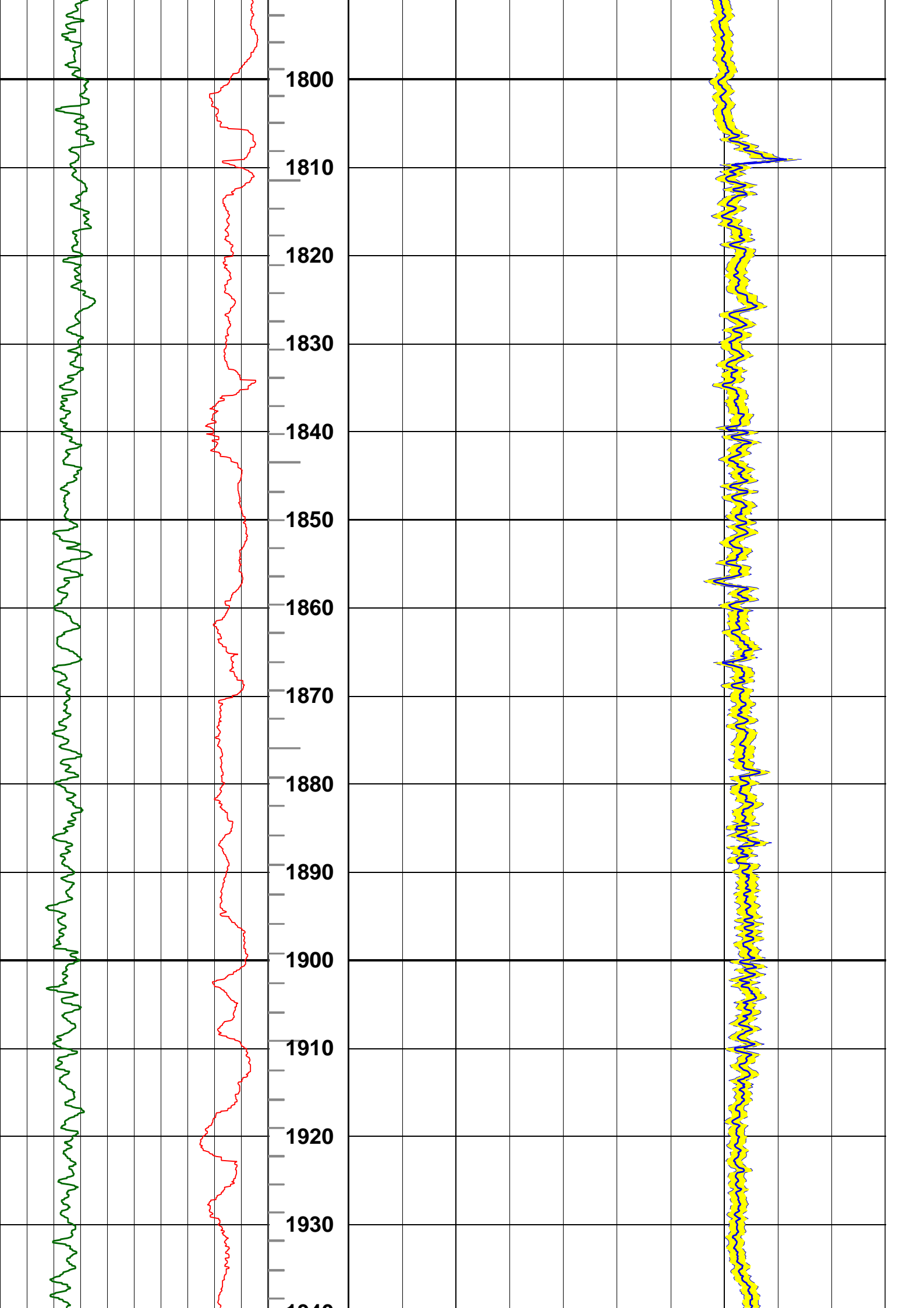
Mud and Borehole Measurements:		
Rm @ Measured Temperature: 0.0868ohm.m @ 25.6degC	BHT:	Bitsize: 12.25in
Rmf @ Measured Temperature: @	Type Fluid in Hole:	
Rmc @ Measured Temperature: @	Mud Density:	

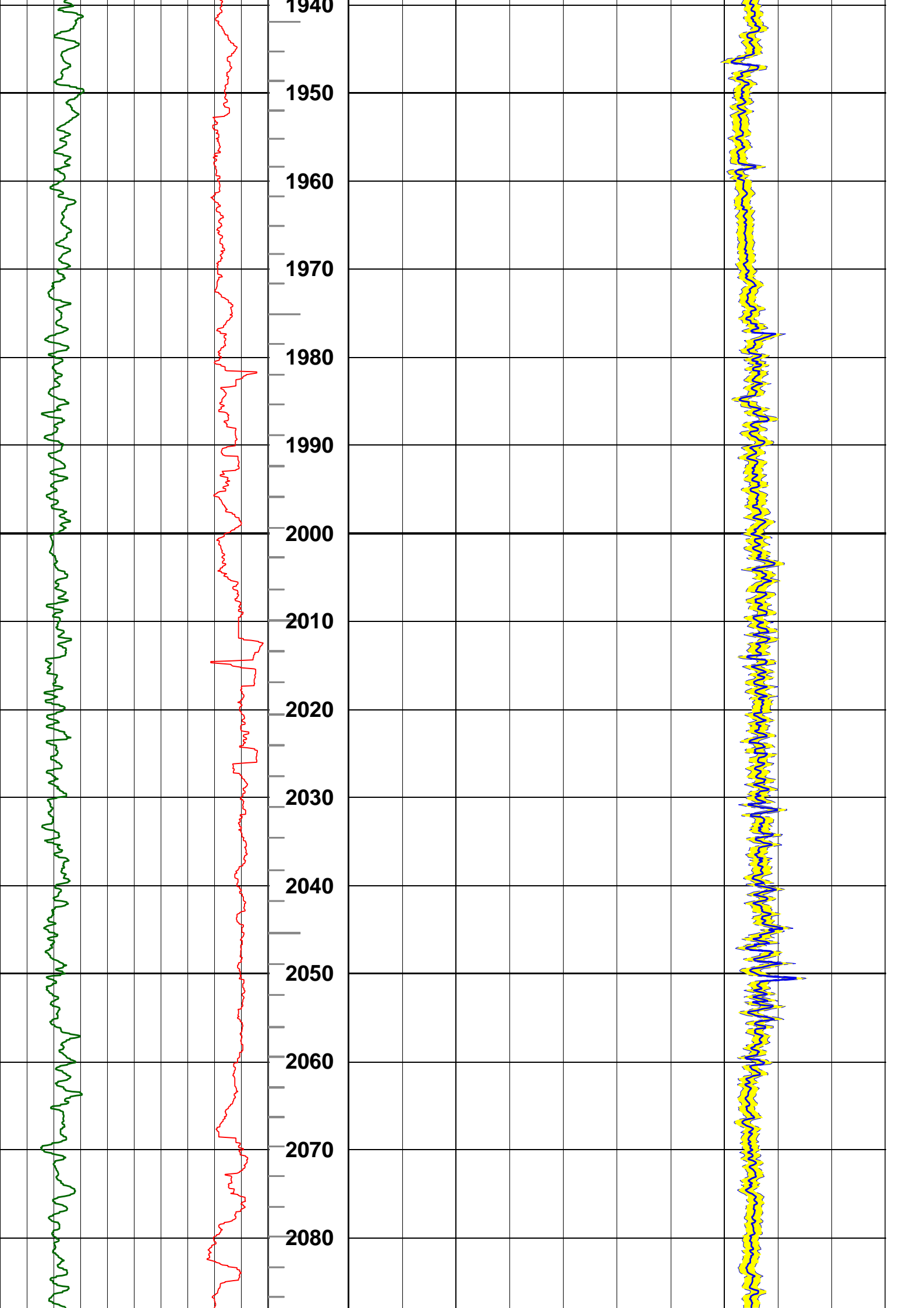
Remarks:

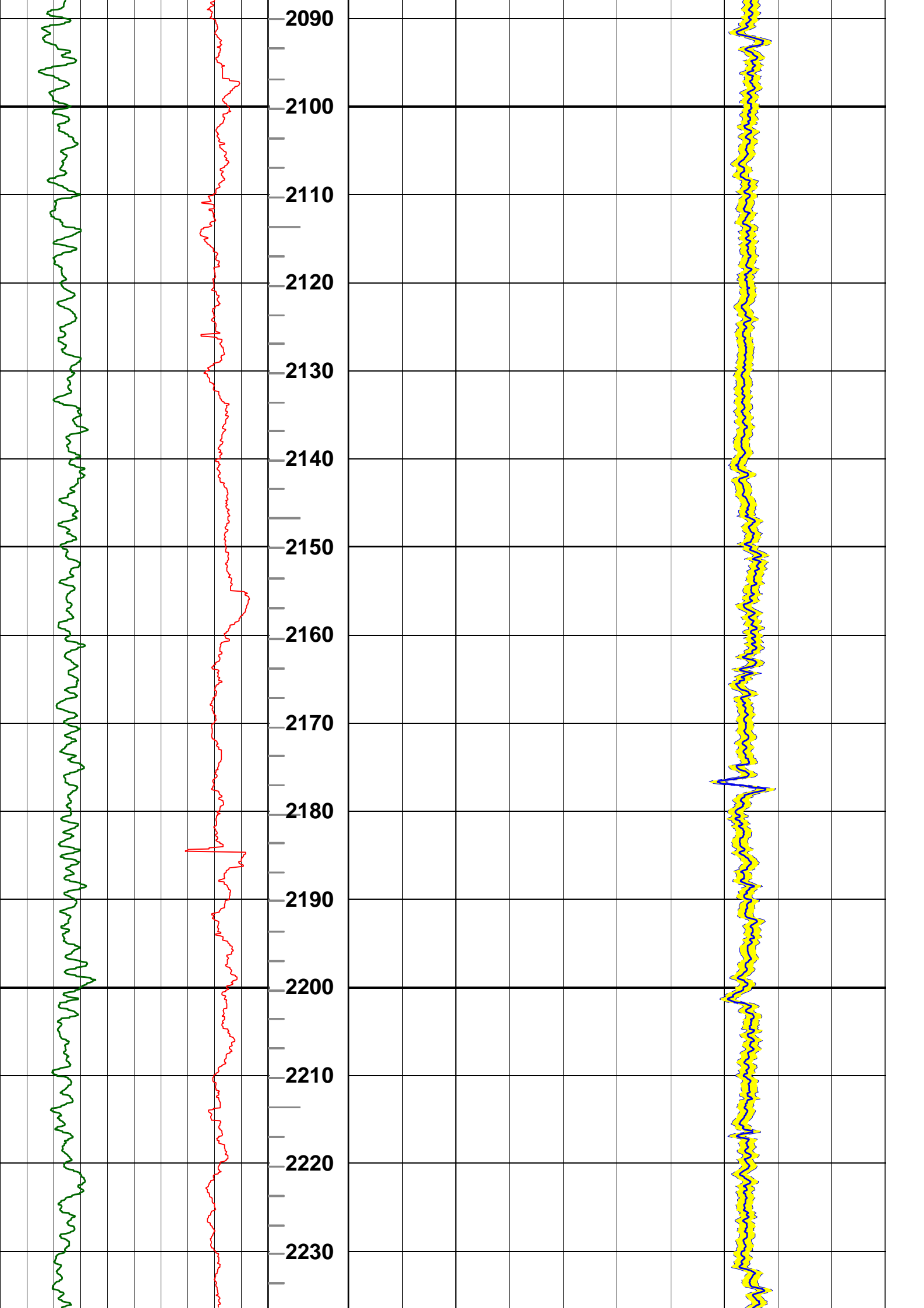
sonicVision9 run in hole drilled with 12.25" bit size.  
The data is affected by drilling speed  
Drilling speed of over 55m/hr (180ft/hr) will result in data not being sampled every 6".  
For processing parameters see the bottom of the log.

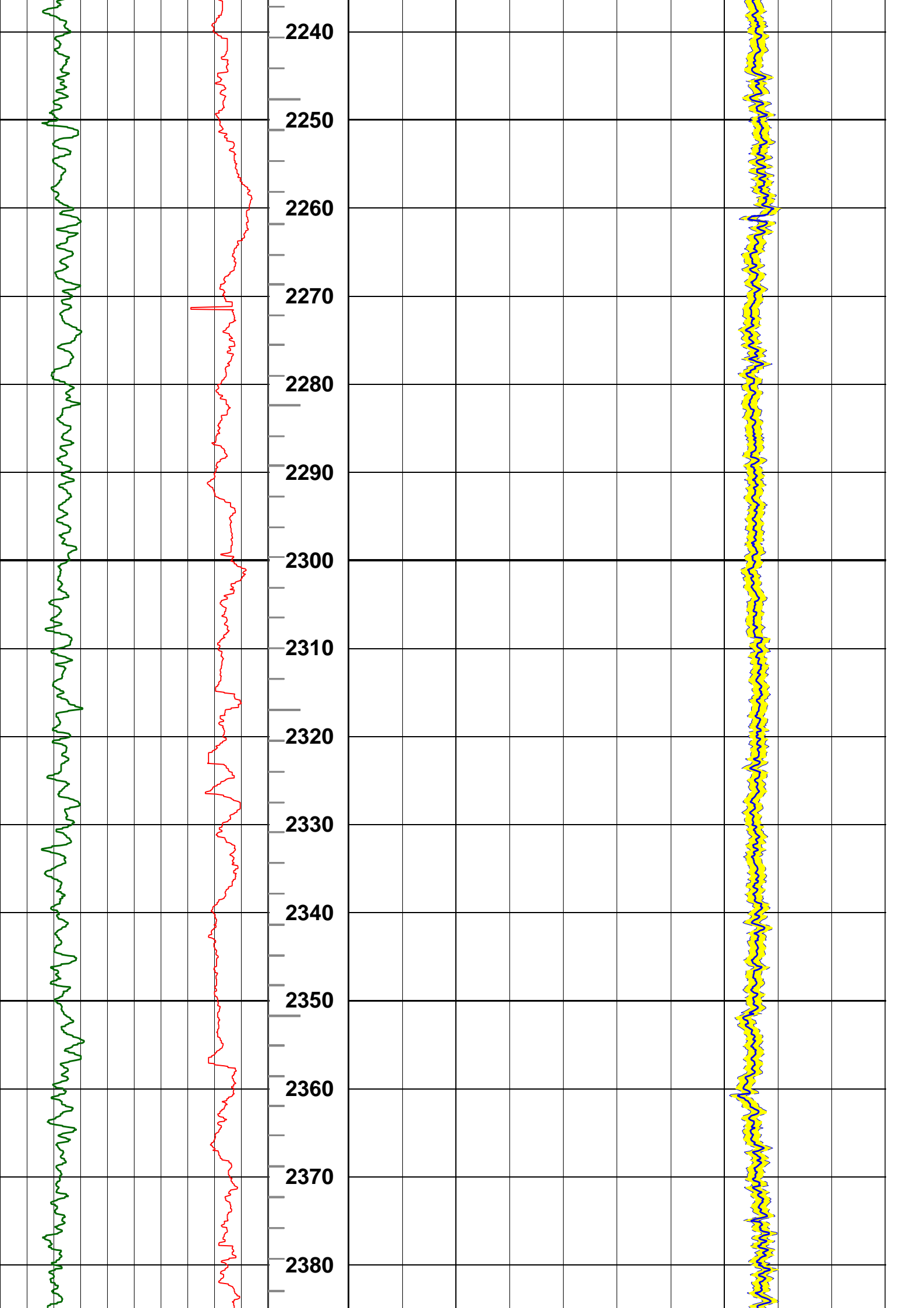
ITT PIPS - Small:1ms ; Large:10ms

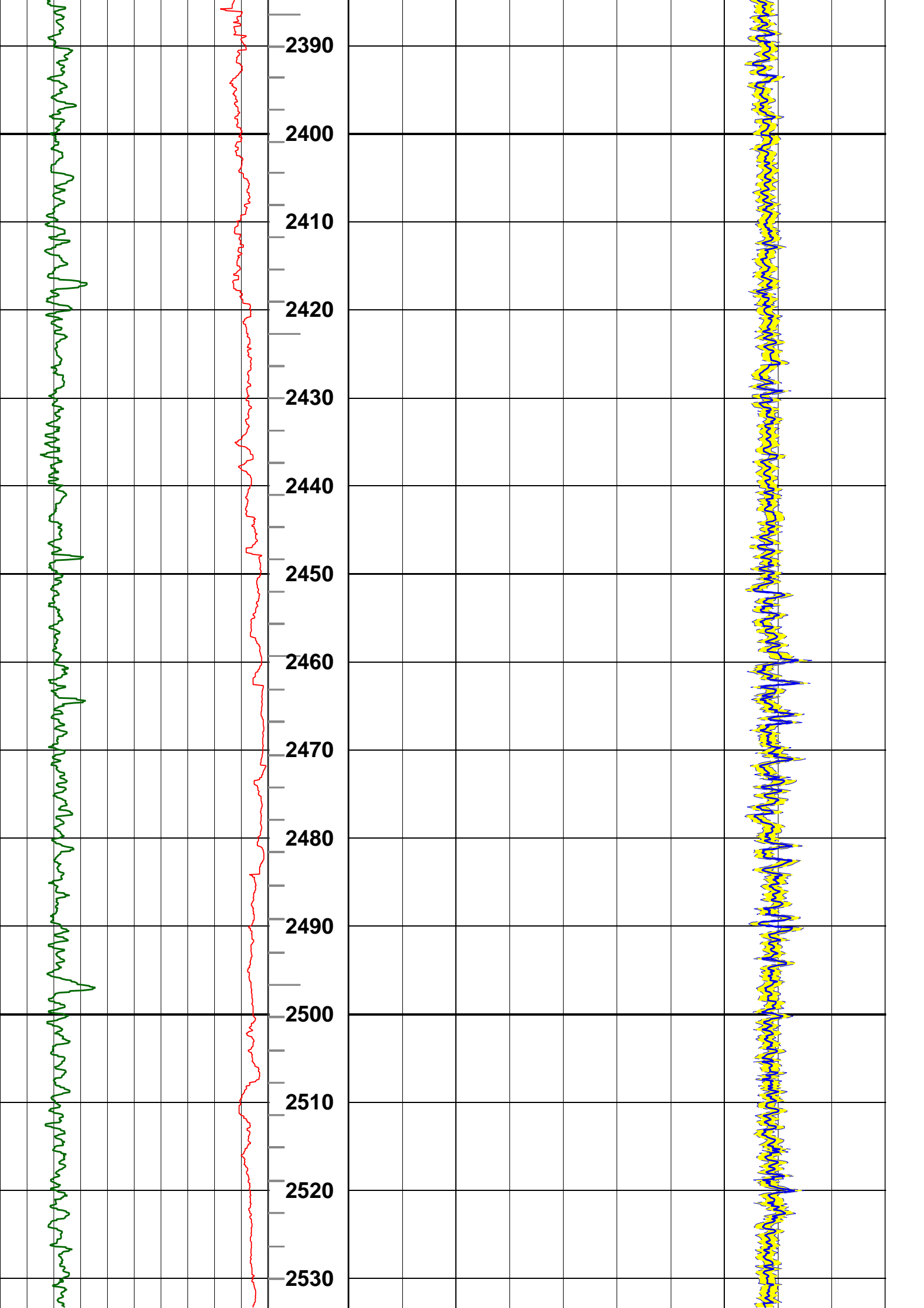


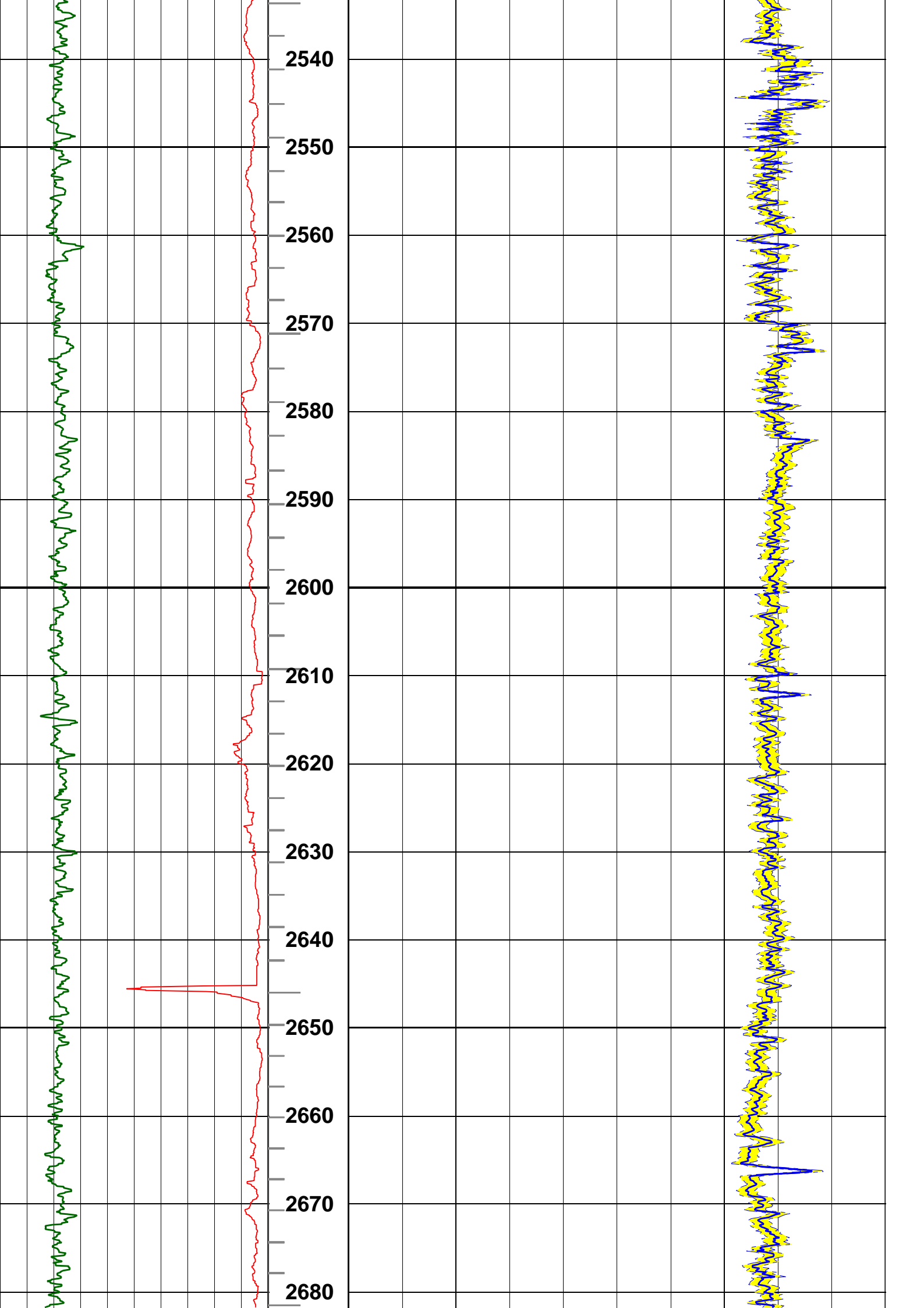




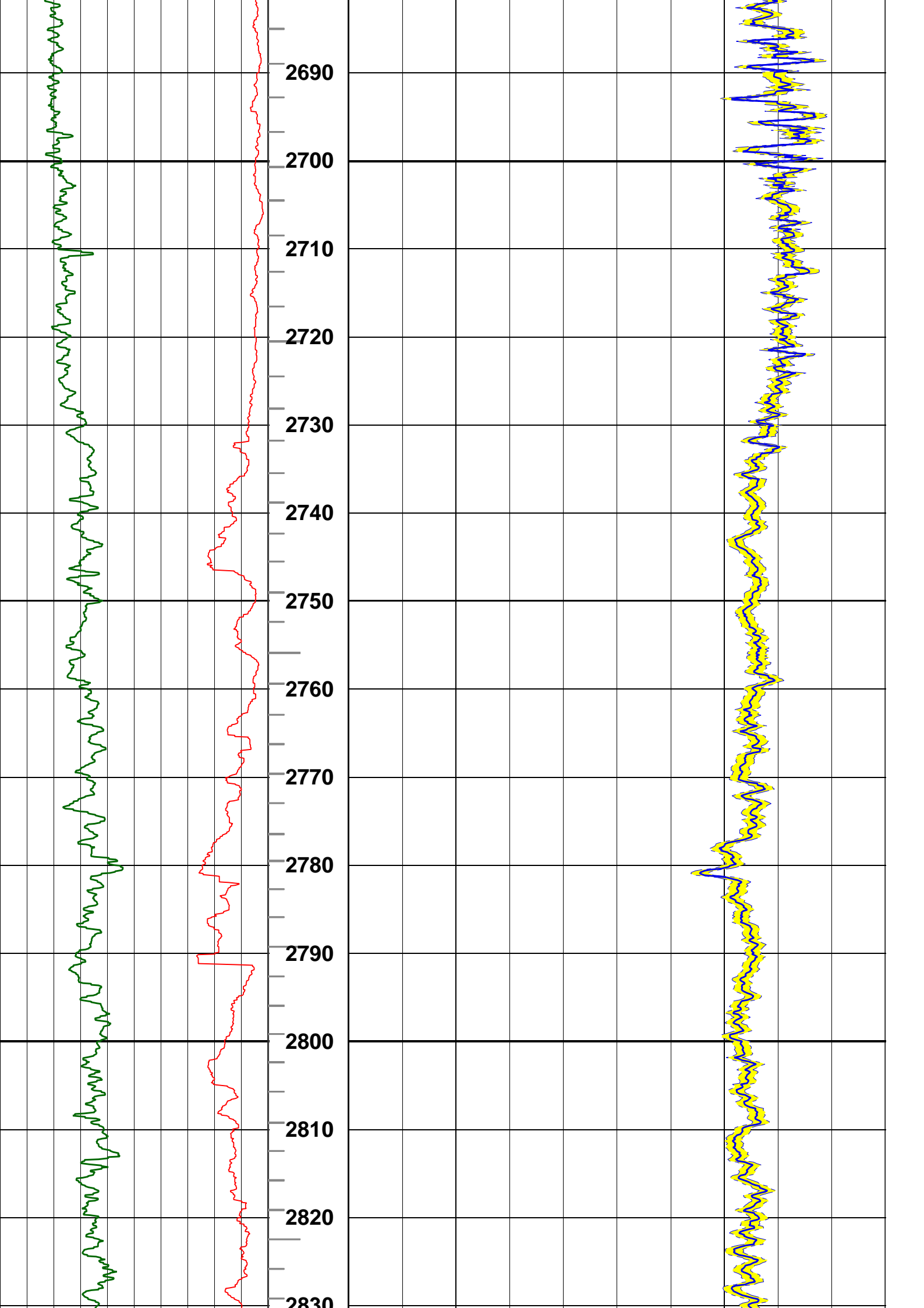


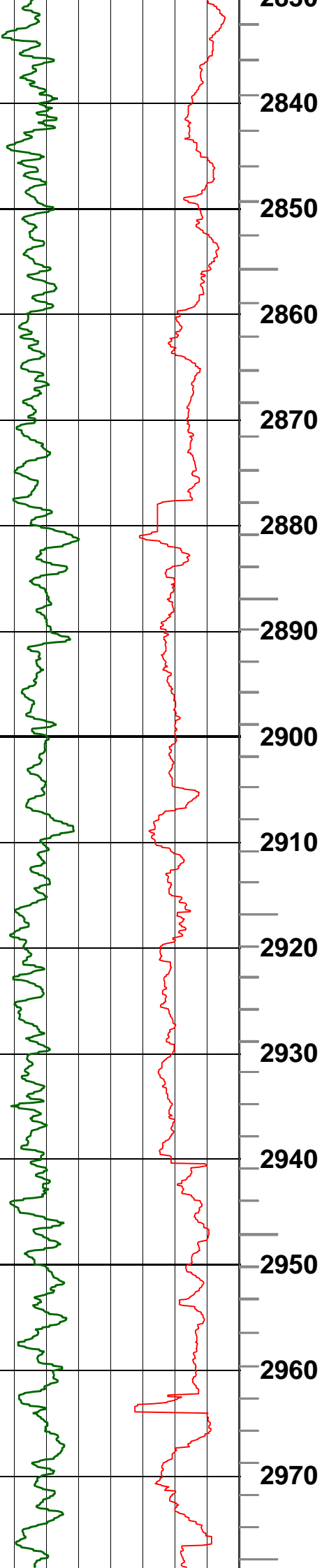




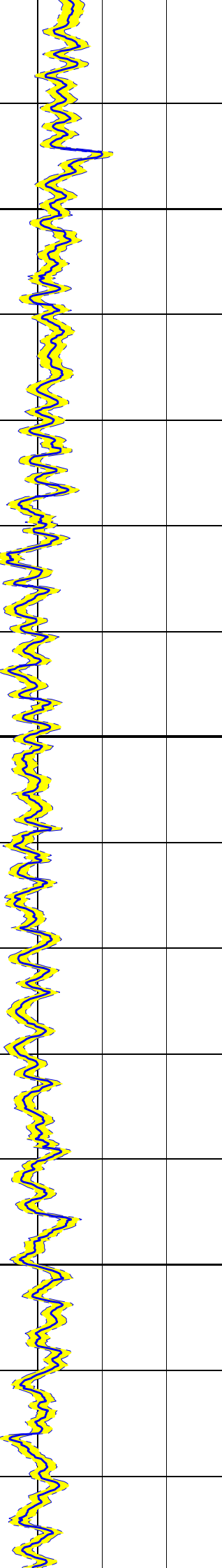


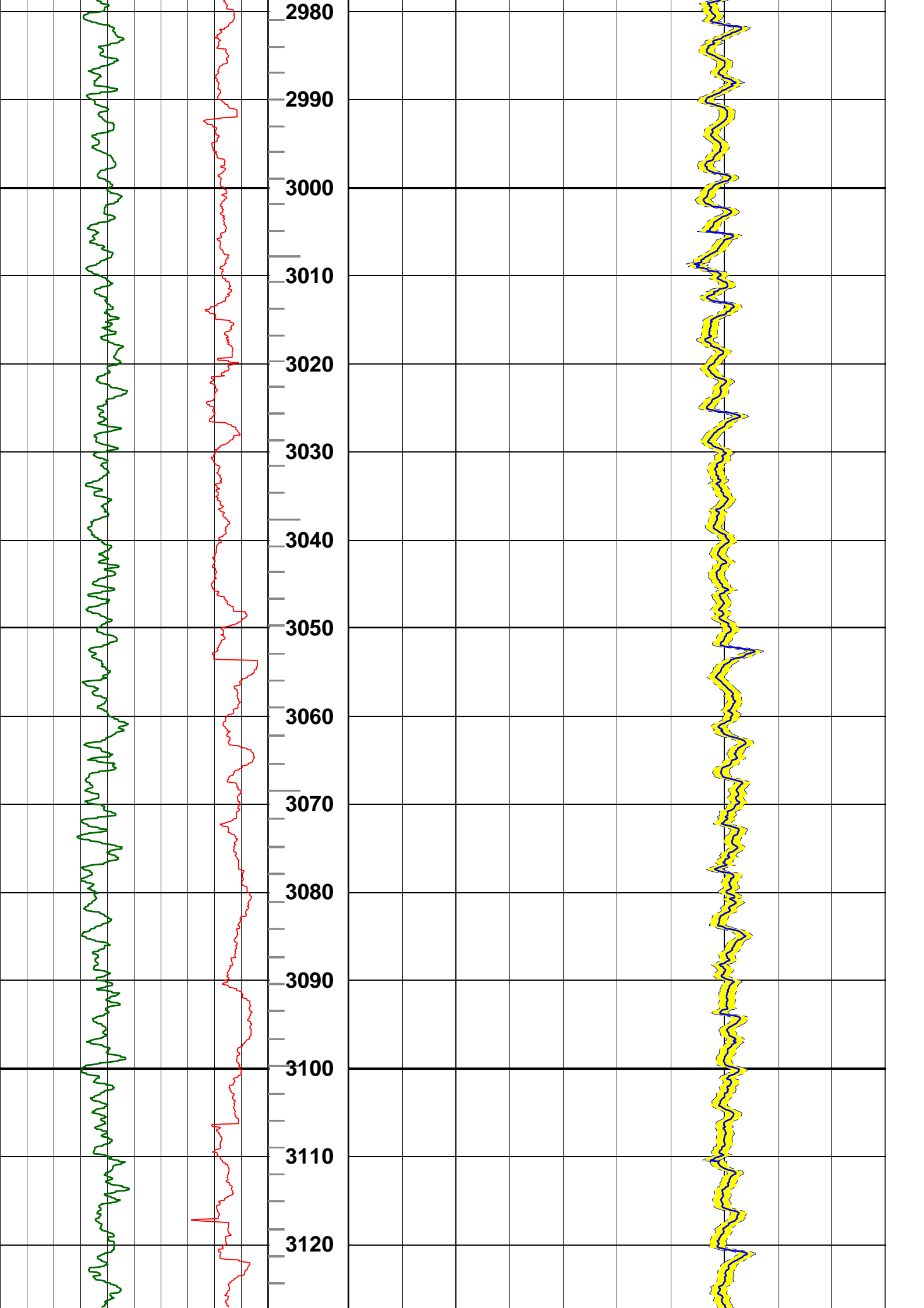


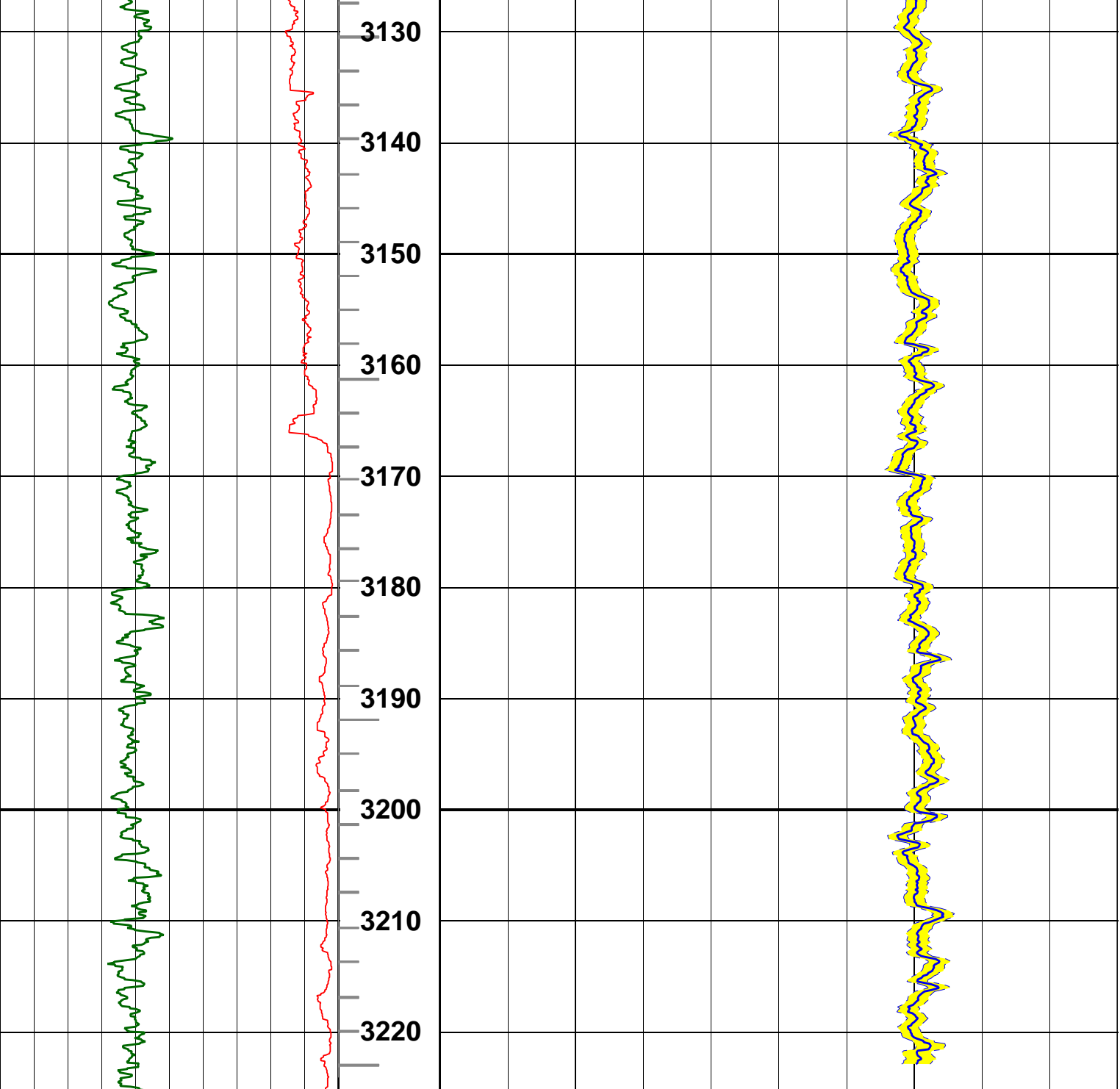




2830  
2840  
2850  
2860  
2870  
2880  
2890  
2900  
2910  
2920  
2930  
2940  
2950  
2960  
2970







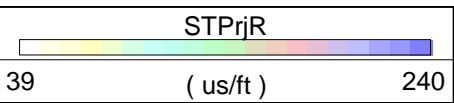
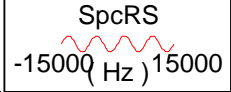
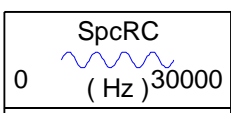
--- Finalization Result ---

1 MPS Compressional Receiver	Absent levels= 161
1 MPS Compressional Transmitter	Absent levels= 165
1 MPS Shear Receiver	Absent levels= 10112

ROP5_RM 500 (m/h) 0	PIPS	Compressional Delta-T (DTCO) 240 (us/ft) 40
Gamma Ray 0 (gAPI) 200	ITT 0 ( ) 5	
<b>MD</b> <b>1 : 500</b> <b>m</b>		

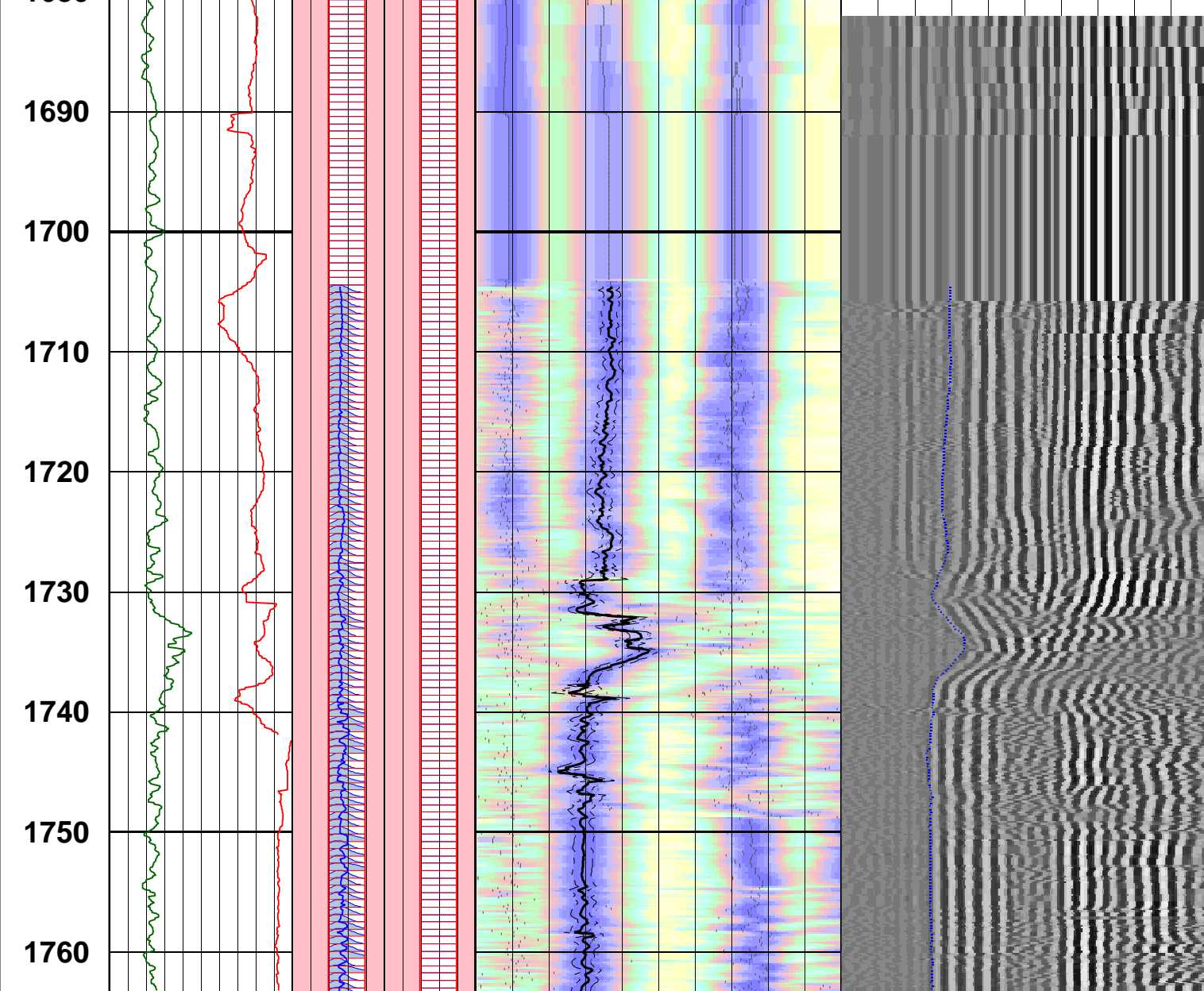
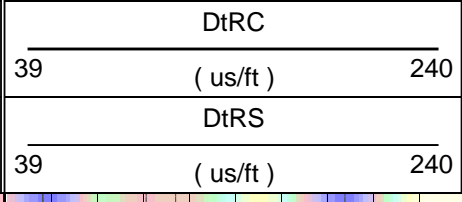
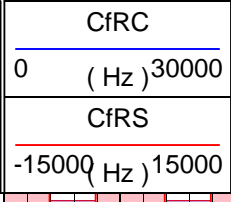
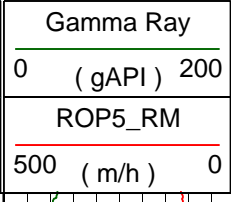
# Monopole Compressional Processing QC

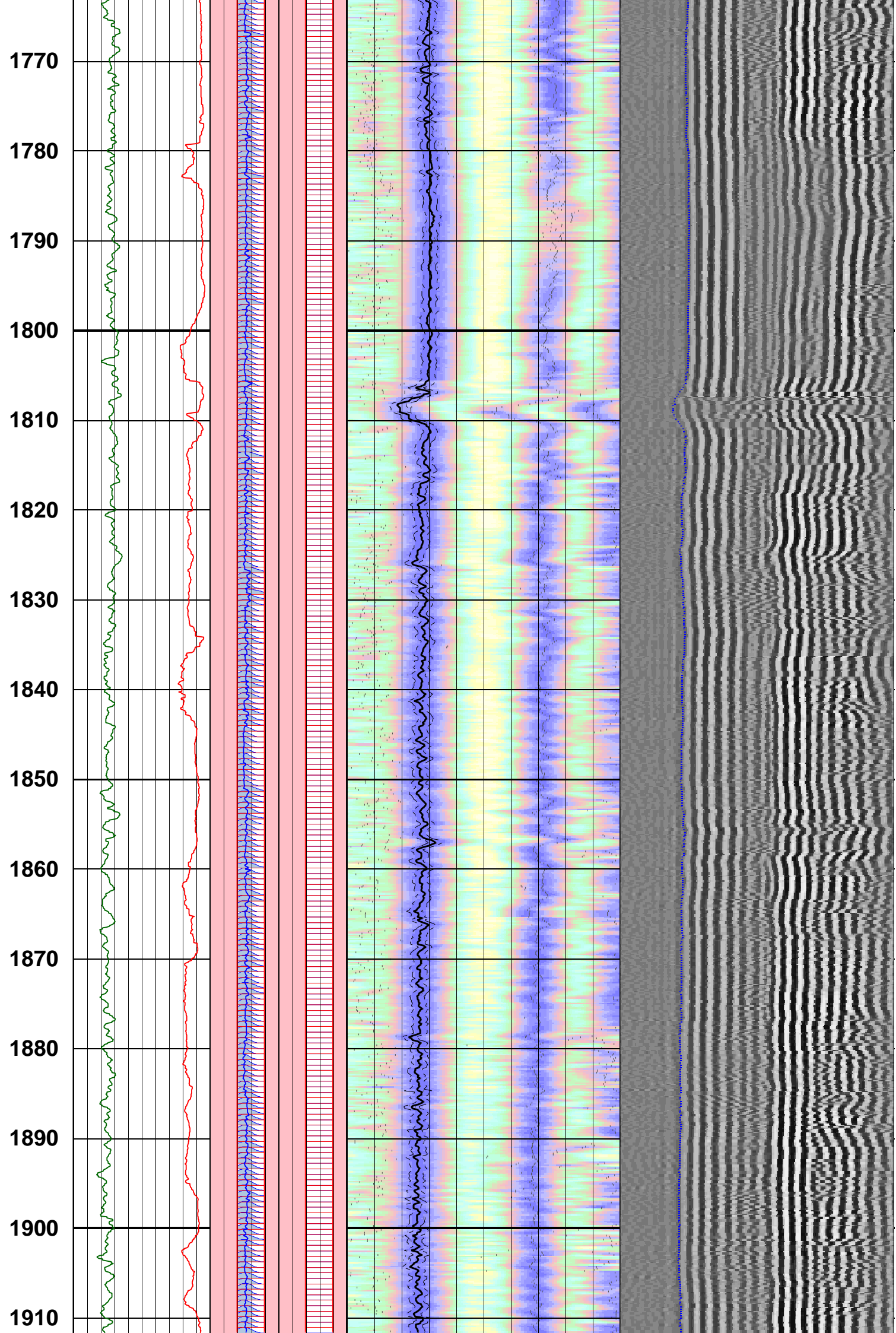
WF VDL		
	400 ( us )	3378
TICS		
	400 ( us )	3378
TISS		
	400 ( us )	3378

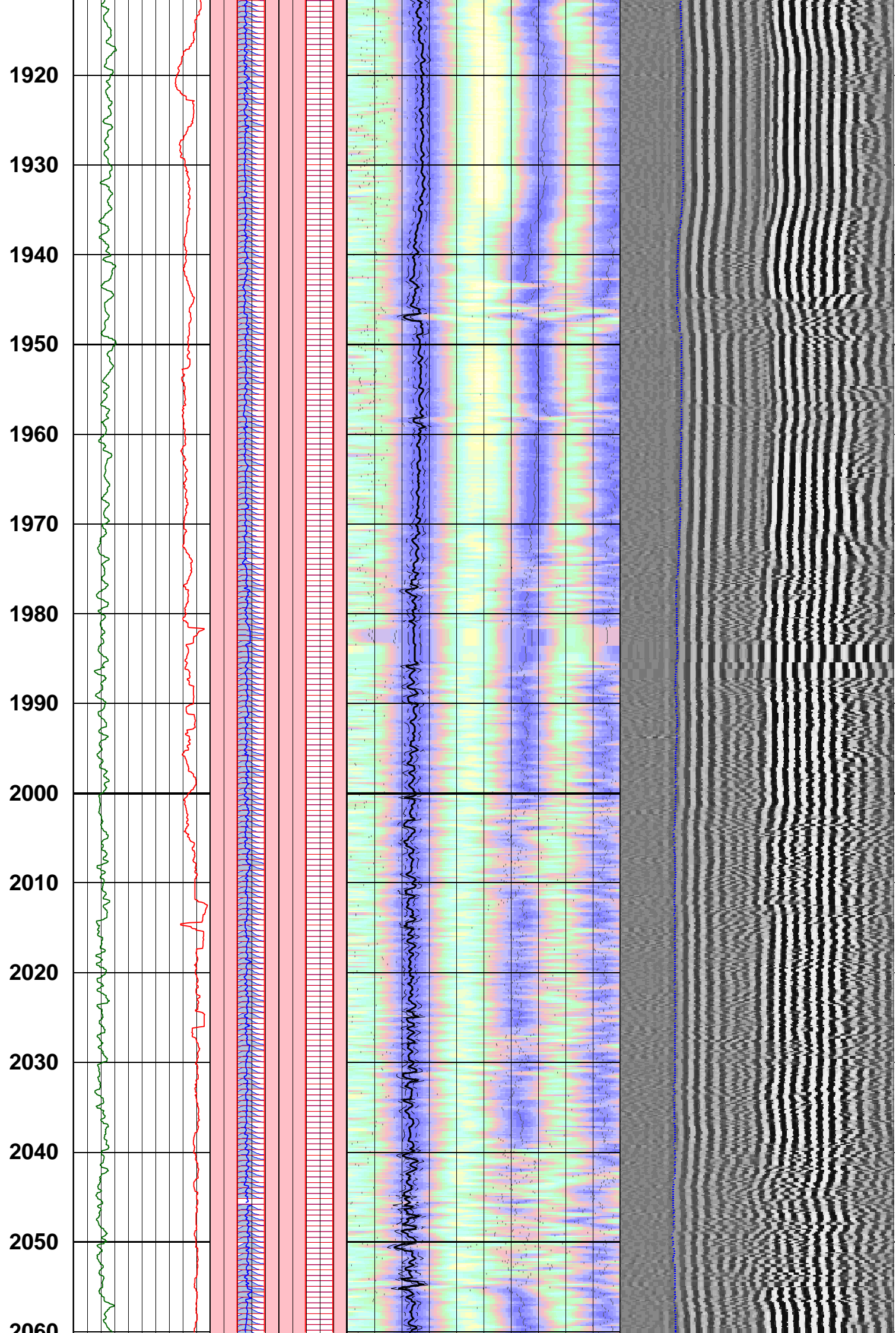


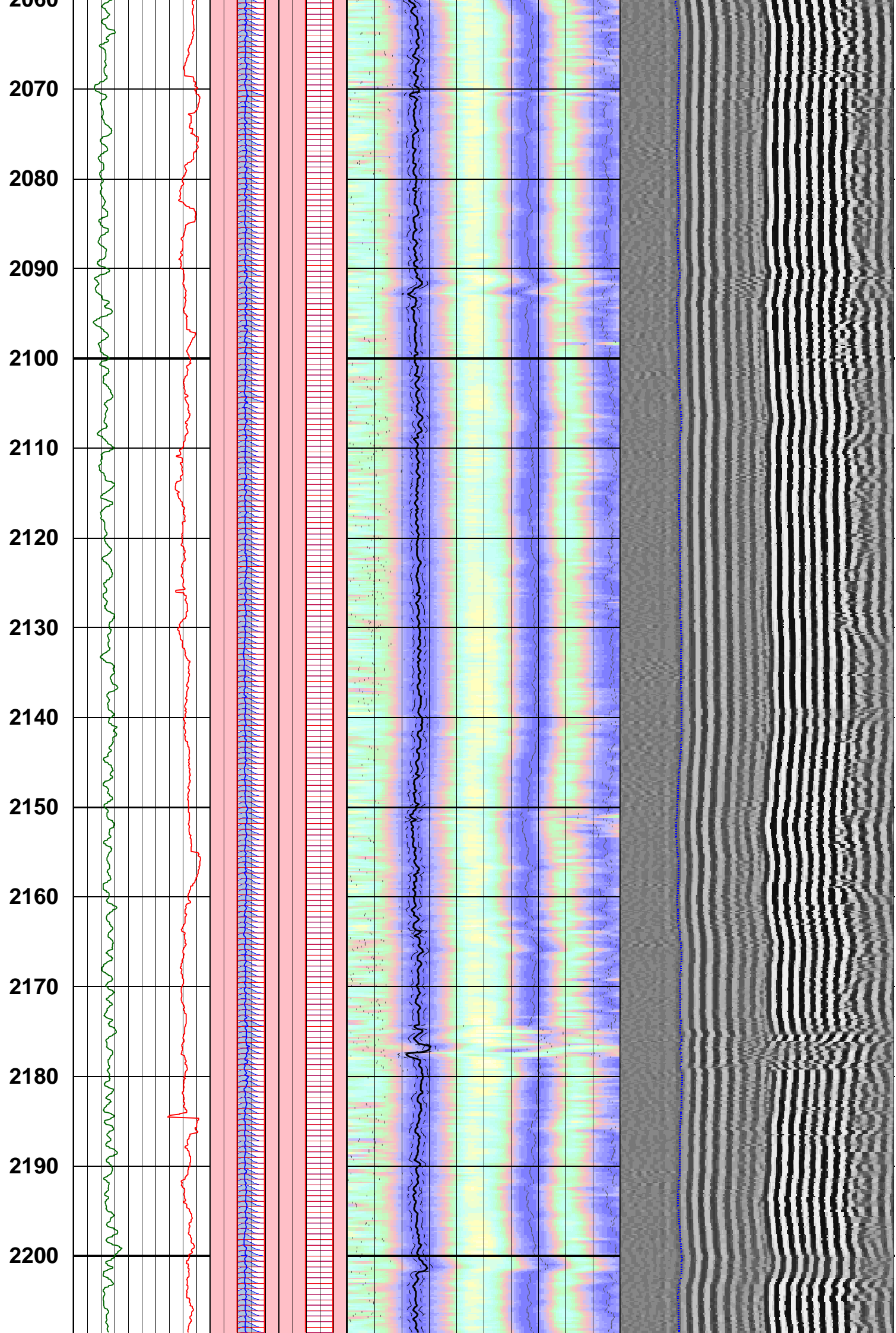
TIVflag

MD  
1 : 500  
m

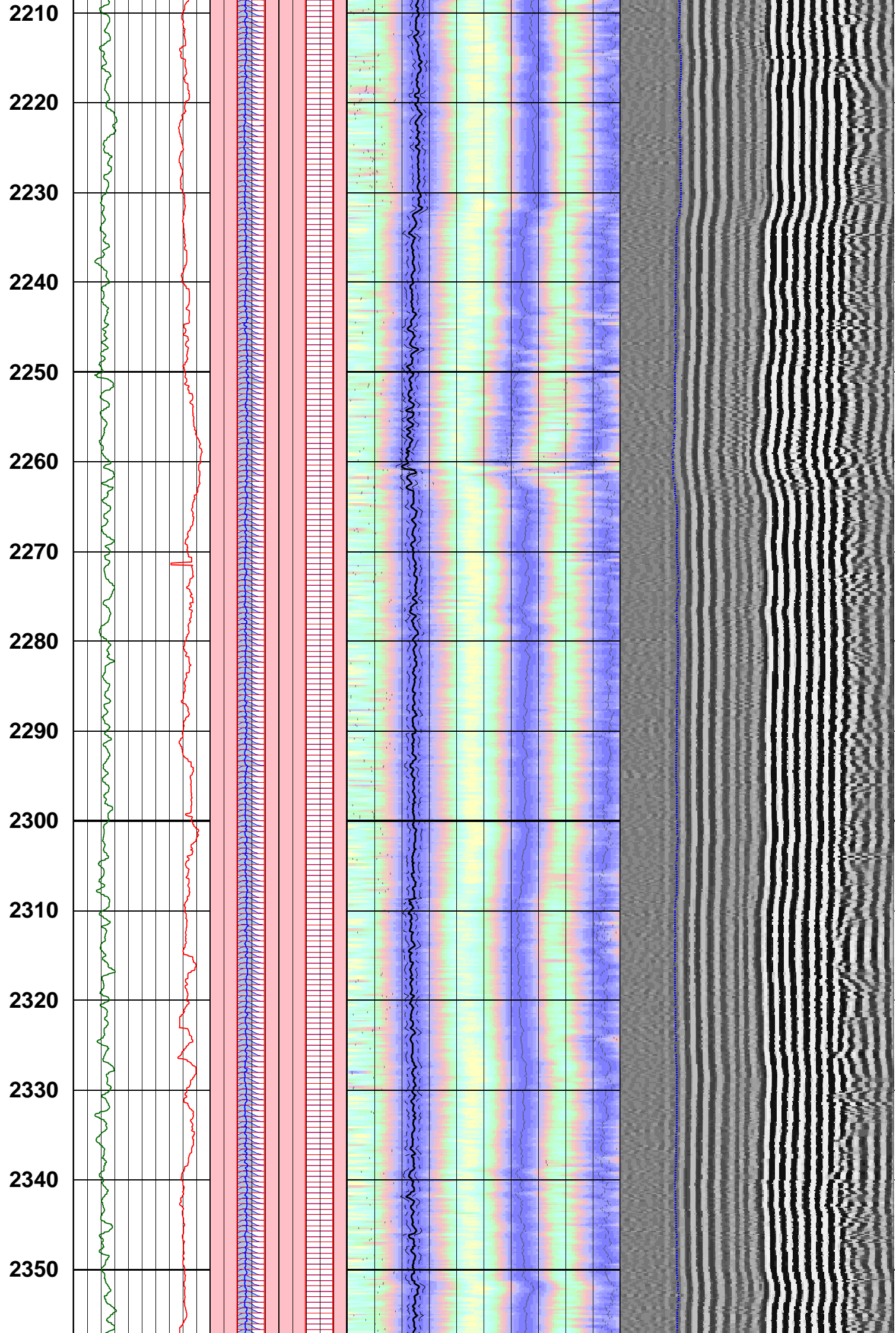


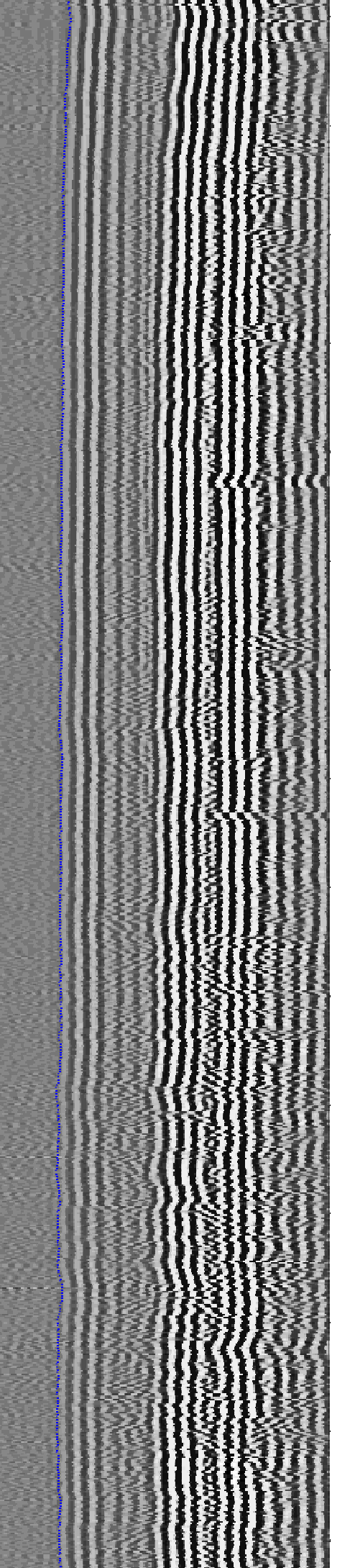
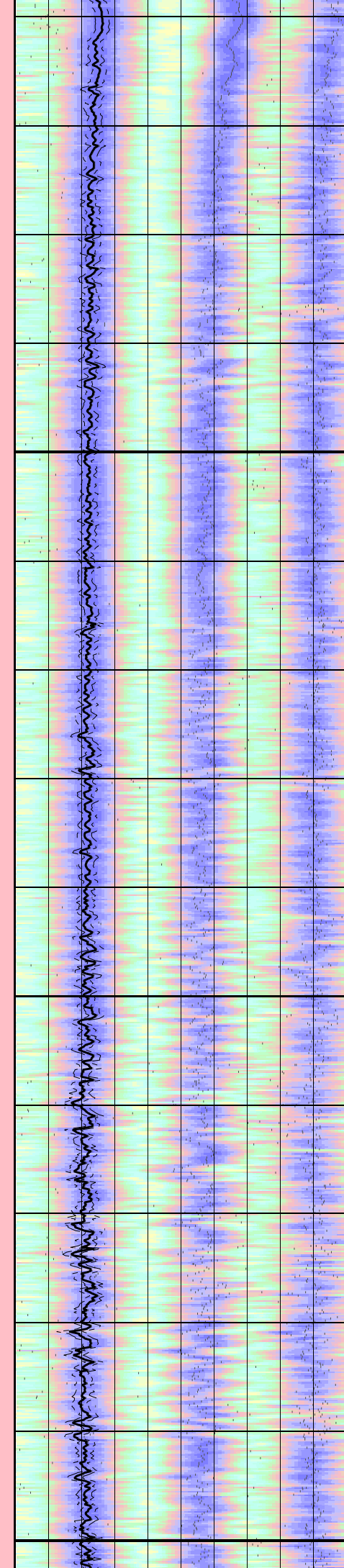
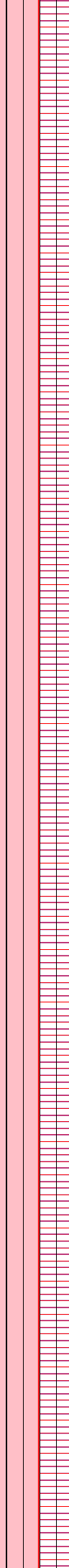
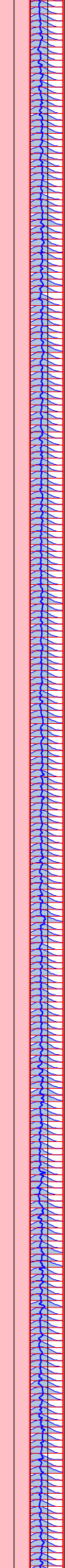
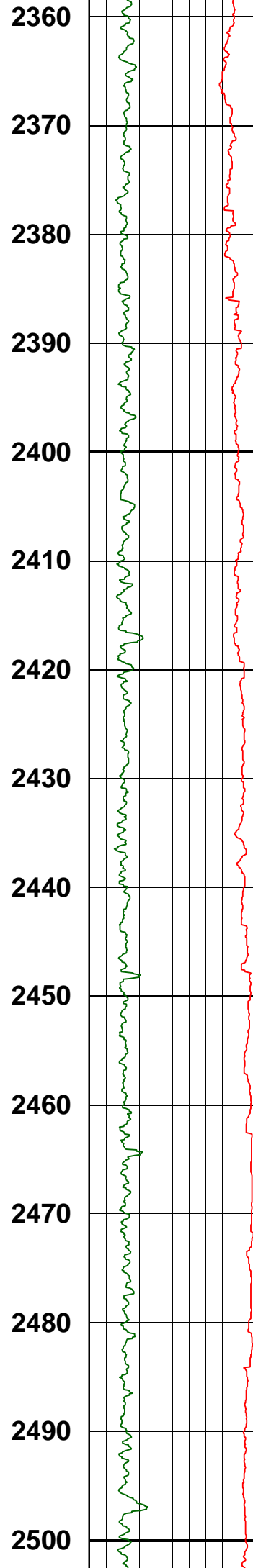


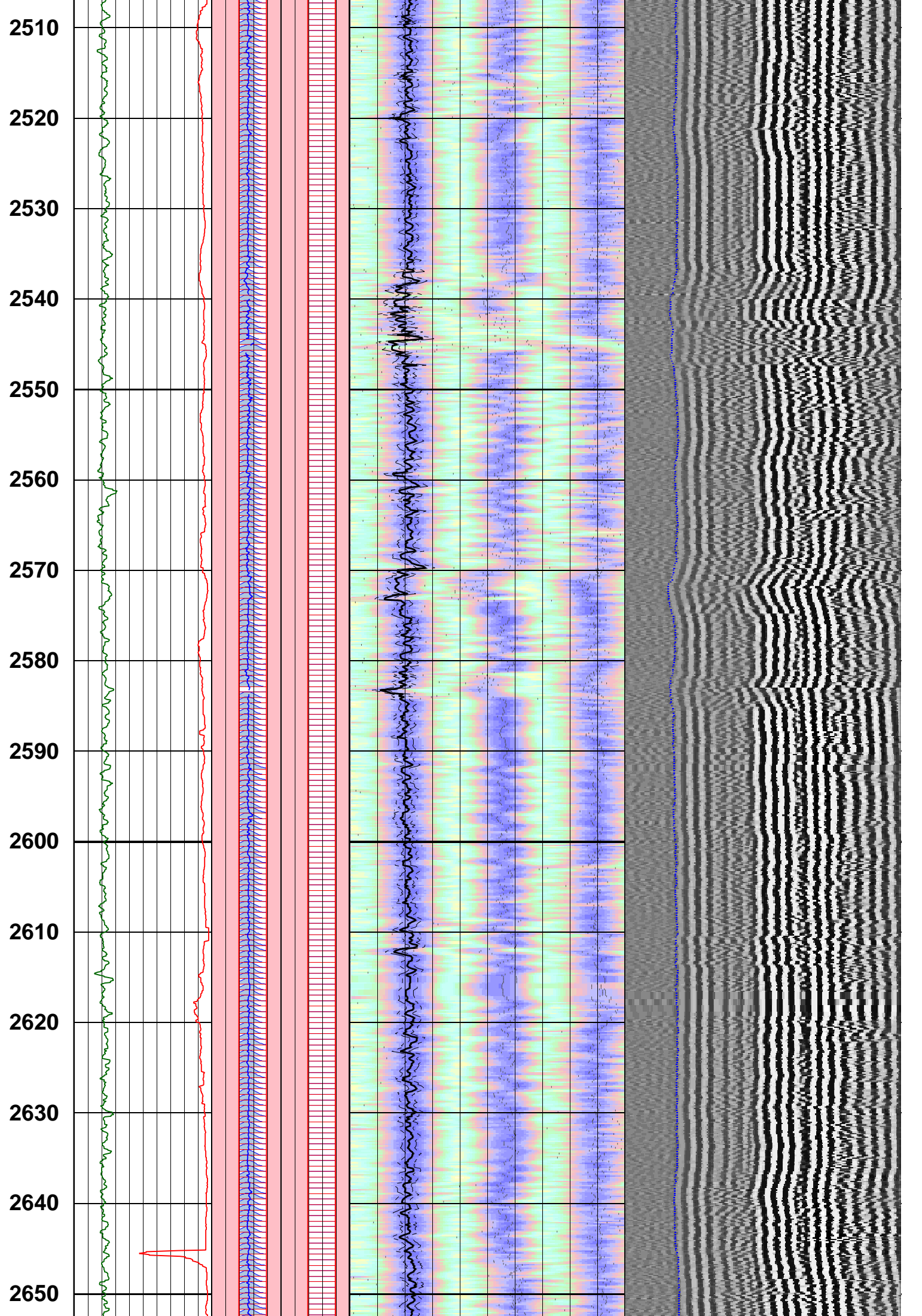


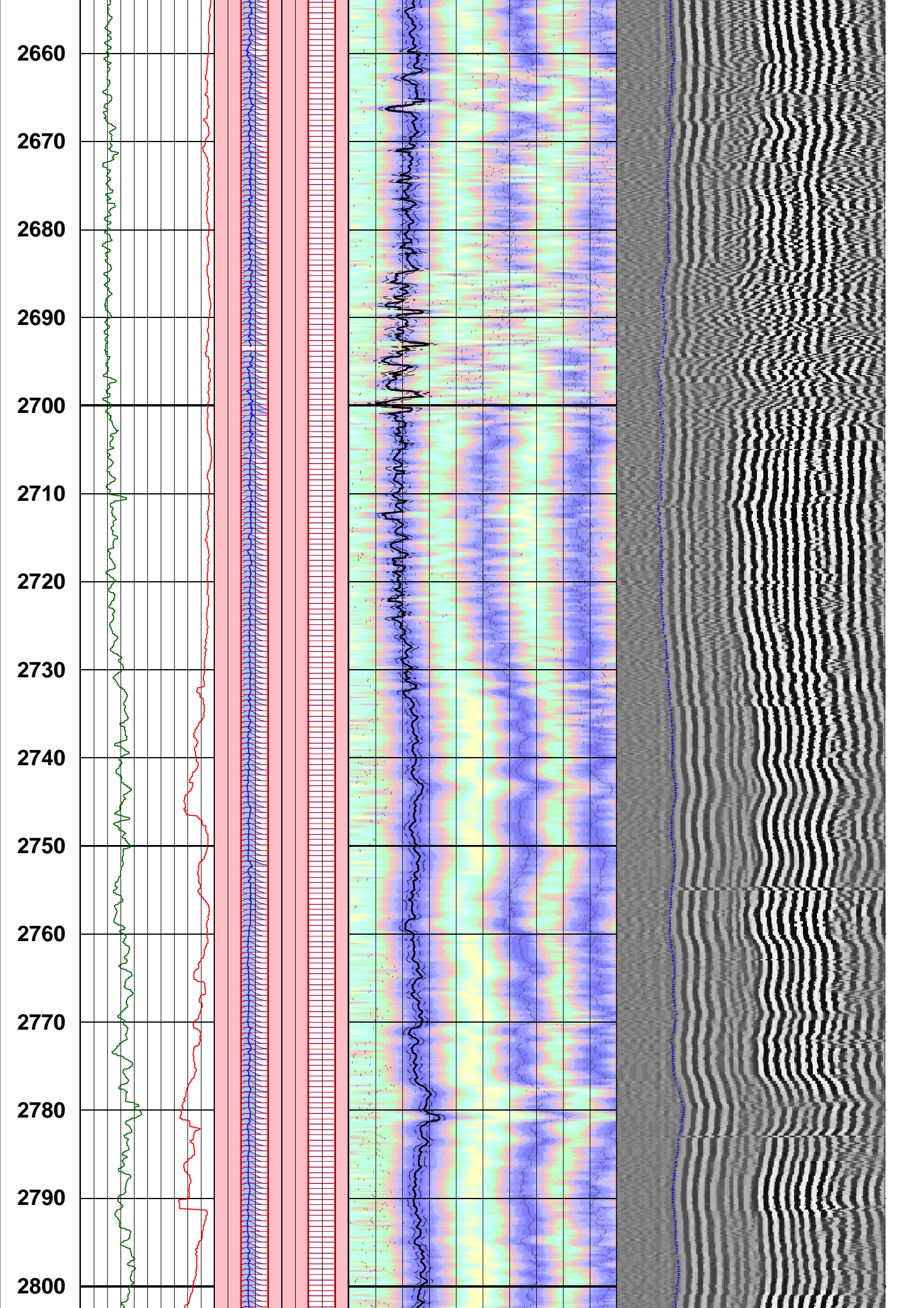


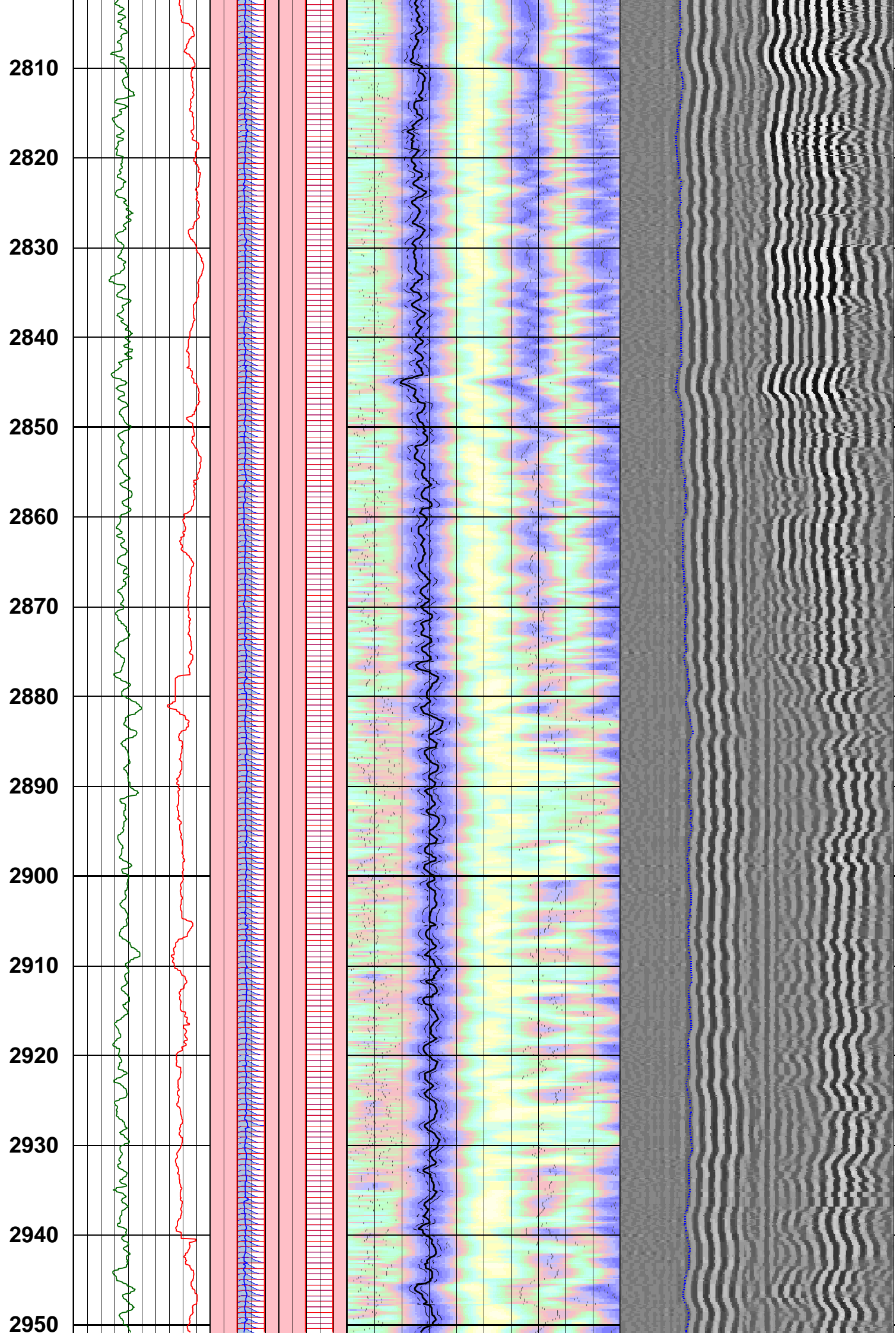




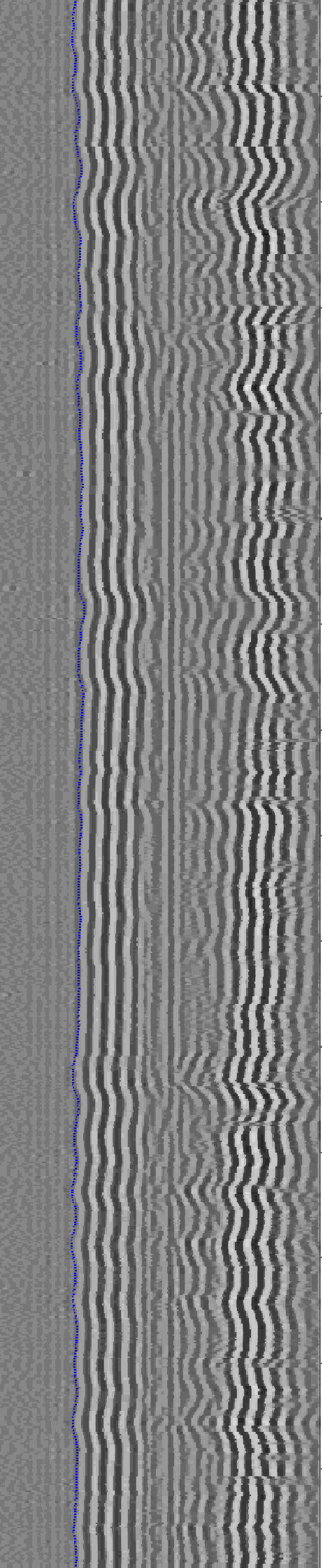
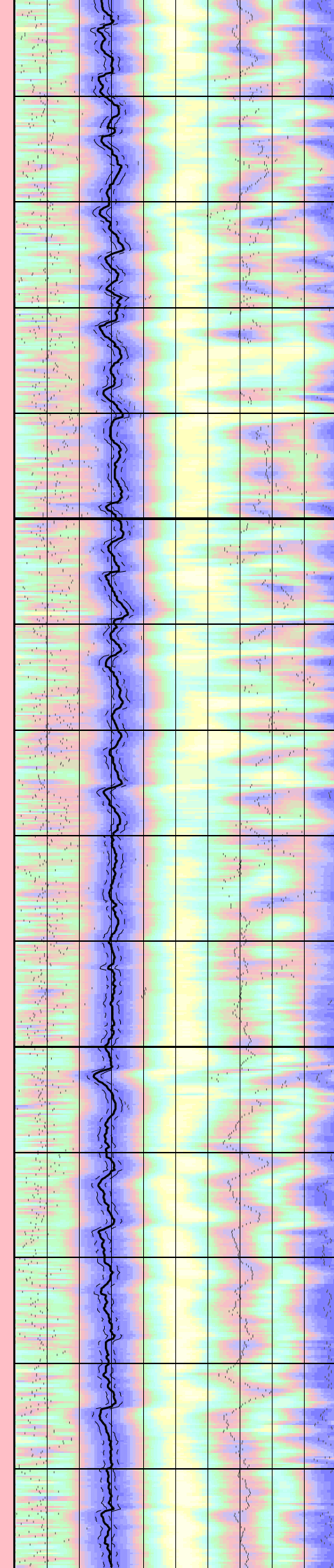
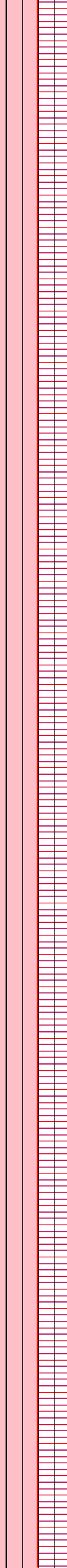
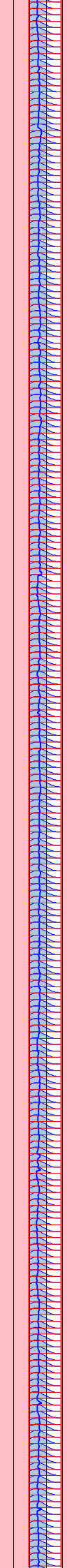
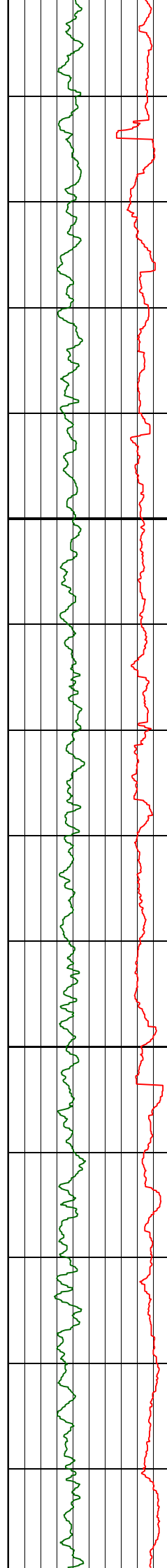


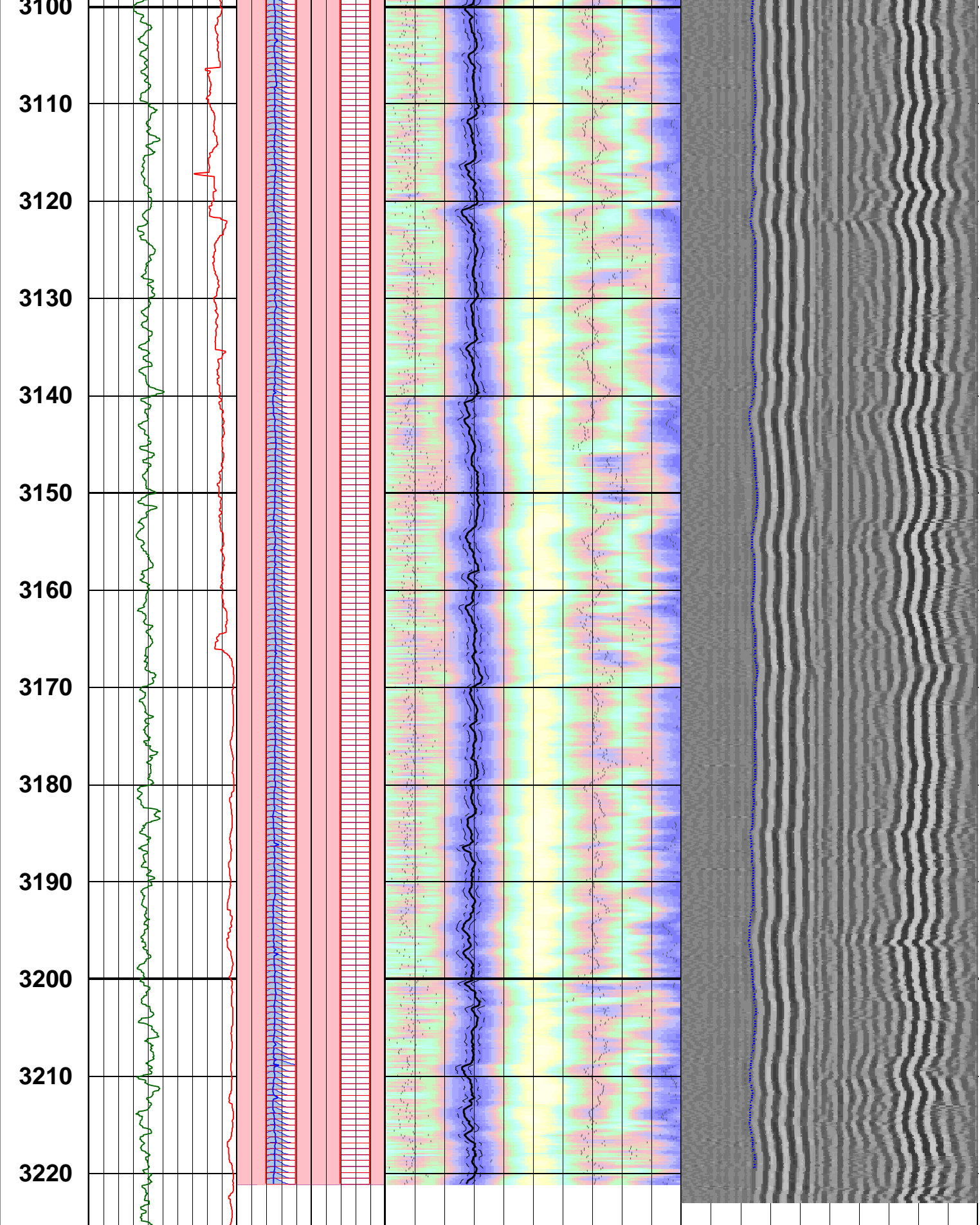






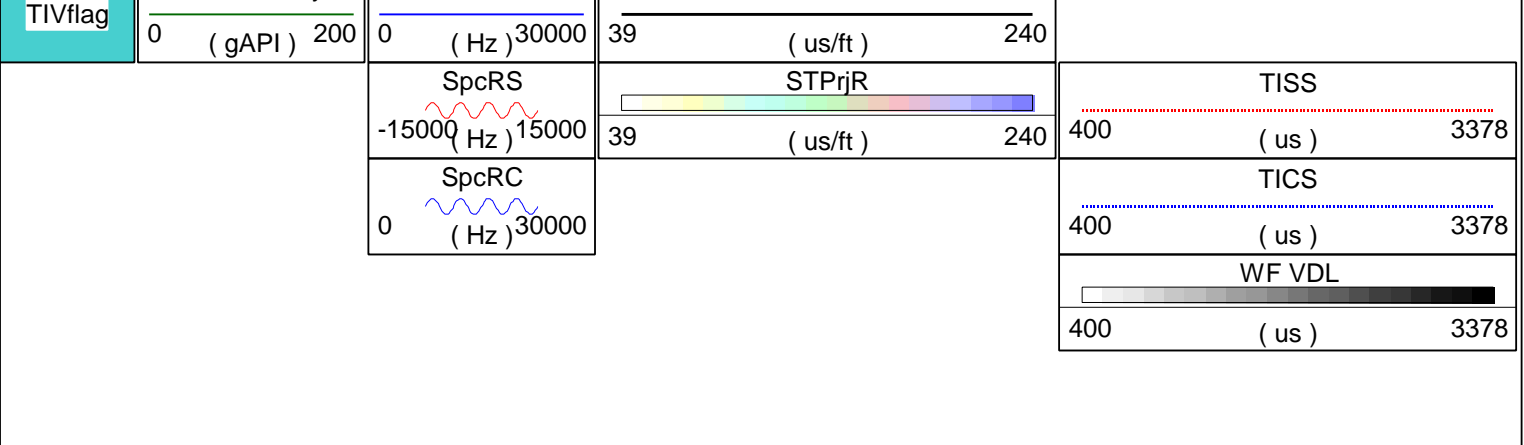
2960  
2970  
2980  
2990  
3000  
3010  
3020  
3030  
3040  
3050  
3060  
3070  
3080  
3090  
3100





Customized Process: Start Depth (3224.17 m), Stop Depth (1680.2 m), Logging Mode (sonicVISION - MPS\_WIDE)  
 Noise Cut Filtering(No), Casing Cut Filtering(No)  
 WF\_FLG(1 1 1 1), MUD\_TYPE(WBM), STCAL(Full Array)  
 TRSPAC(3.05714), RRSAPAC(0 0.2032 0.4064 0.6096)  
 Mud Slowness (no input)  
 Hole Diameter (no input)

3100	Logging Guide (no input)	ROP (m/h)	1500	39	DtRS	240
1	Tracking Guide (no input)	-15000 (Hz)	15000	39	( us/ft )	240
	Gamma Ray	CfRC			DtRC	



Company: Apache Energy Ltd.  
 Well: Elver-1  
 FIELD: VIC-P59  
 RIG: Ocean Patriot  
 STATE: VIC



Date Logged: 30-Dec-2008      Date Processed: 31-Dec-2008