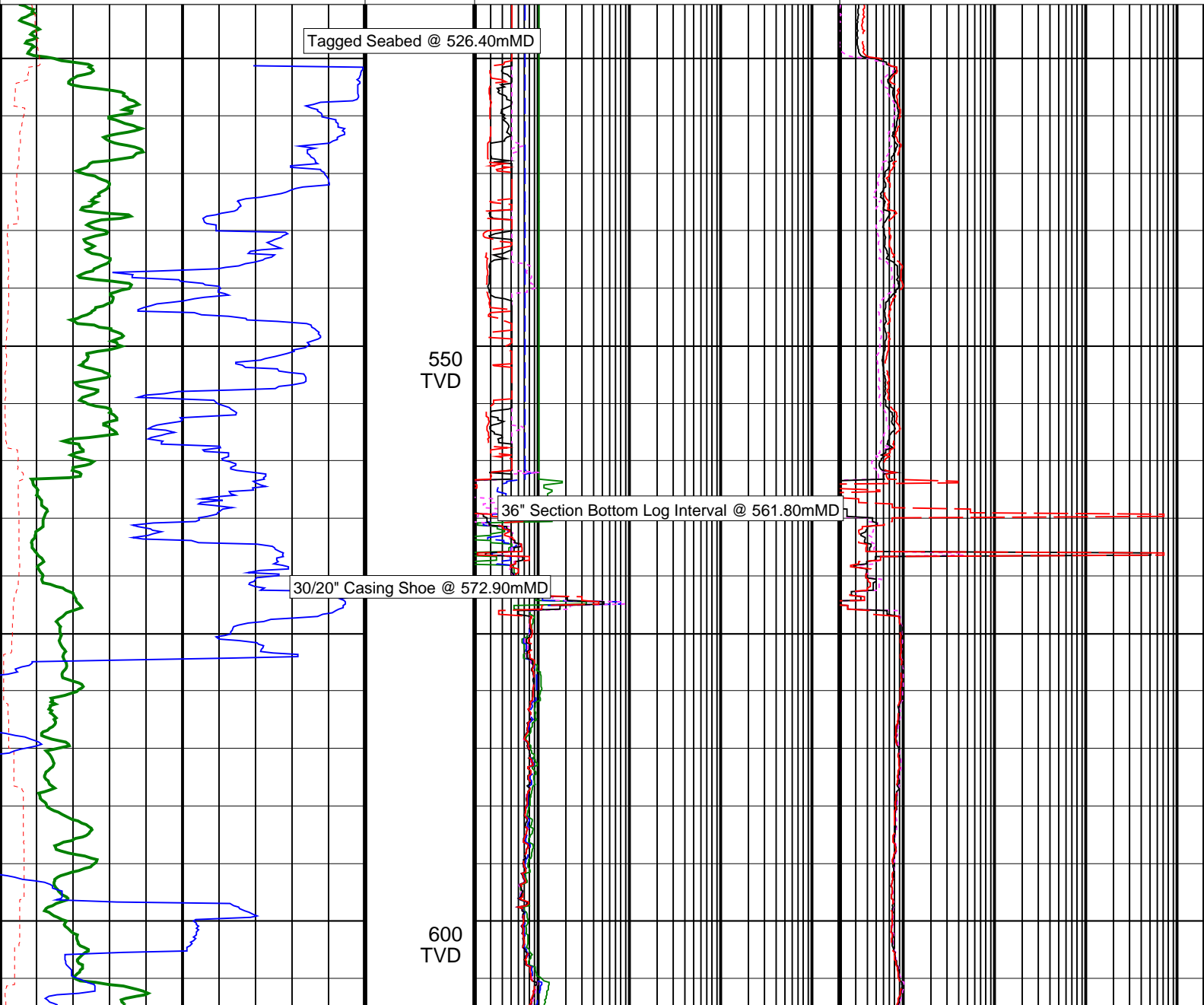
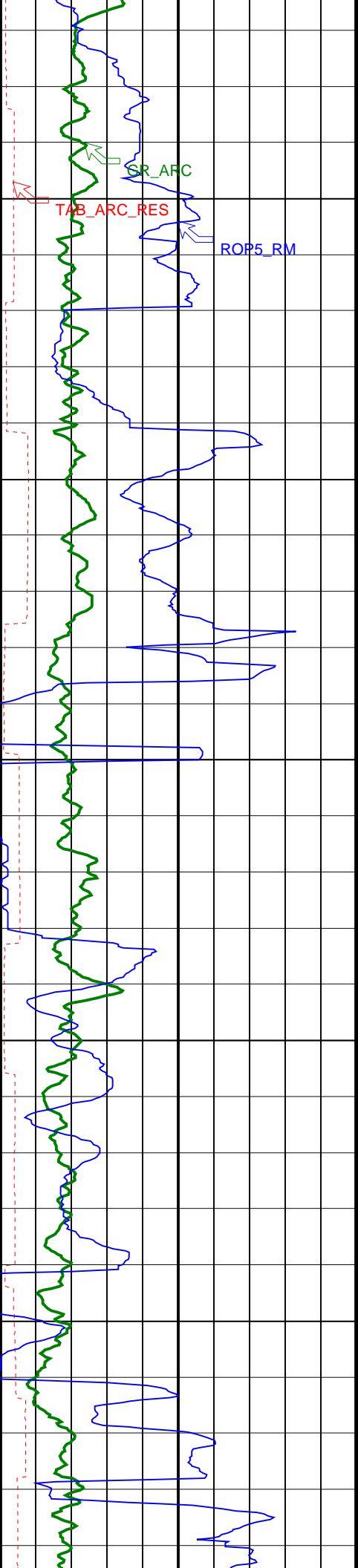


Elver-1_VISION Resistivity RM 500TVD

Format: ARC_500TVD Vertical Scale: 1:500 Graphics File Created: 30-Dec-2008 21:59

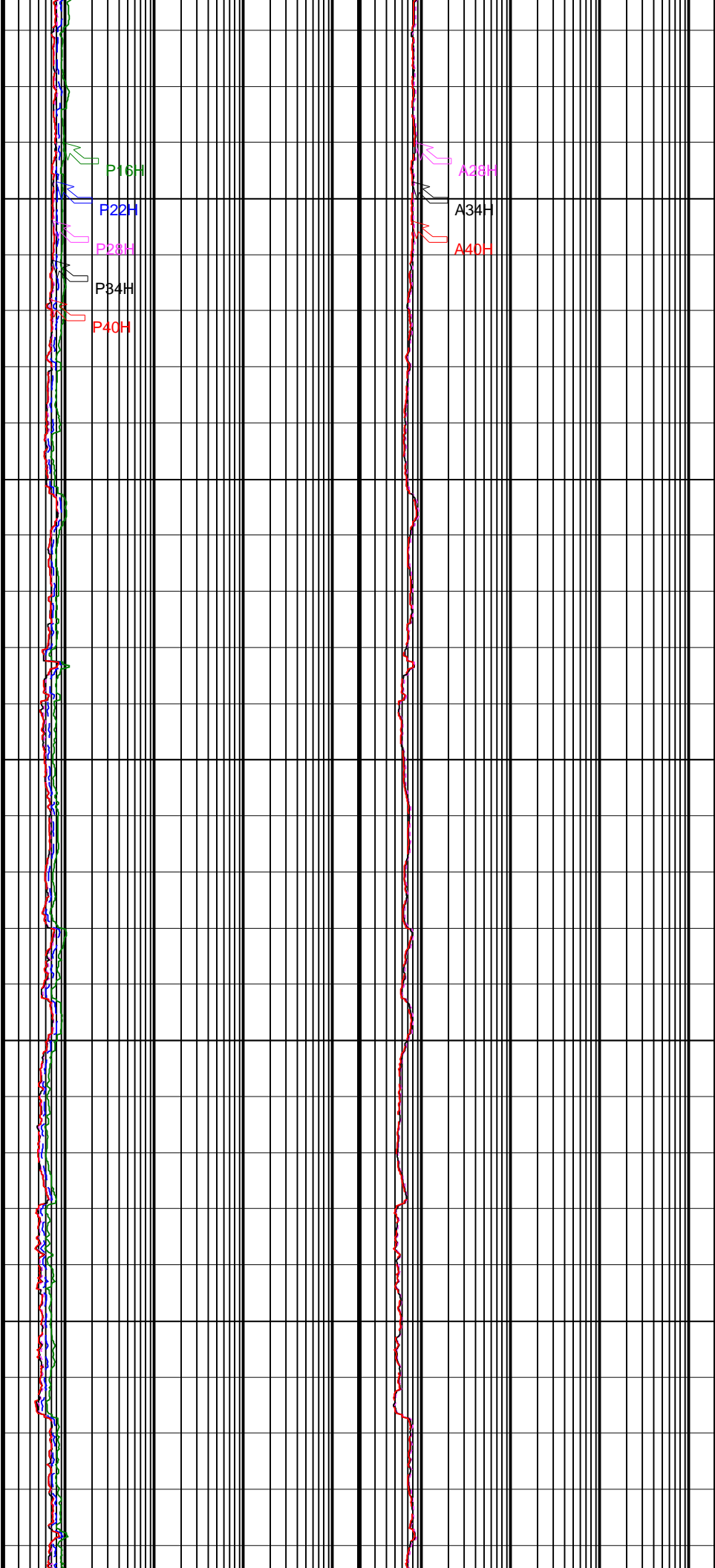
| | | |
|---|---|---|
| | ARC Phase-Shift Resistivity 40-in. at 2 MHz (P40H) 0.2 (OHMM) 2000 | |
| | ARC Phase-Shift Resistivity 34-in. at 2 MHz (P34H) 0.2 (OHMM) 2000 | |
| Rate of Penetration, Averaged over Last 5ft (ROP5_RM) 200 (M/HR) 0 | ARC Phase-Shift Resistivity 28-in. at 2 MHz (P28H) 0.2 (OHMM) 2000 | ARC Attenuation Resistivity 40-in. at 2 MHz (A40H) 0.2 (OHMM) 2000 |
| ARC Resistivity Time After Bit (TAB_ARC_RES) 0 (HR) 10 | ARC Phase-Shift Resistivity 22-in. at 2 MHz (P22H) 0.2 (OHMM) 2000 | ARC Attenuation Resistivity 34-in. at 2 MHz (A34H) 0.2 (OHMM) 2000 |
| ARC Gamma Ray (GR_ARC) 0 (GAPI) 200 | ARC Phase-Shift Resistivity 16-in. at 2 MHz (P16H) 0.2 (OHMM) 2000 | ARC Attenuation Resistivity 28-in. at 2 MHz (A28H) 0.2 (OHMM) 2000 |

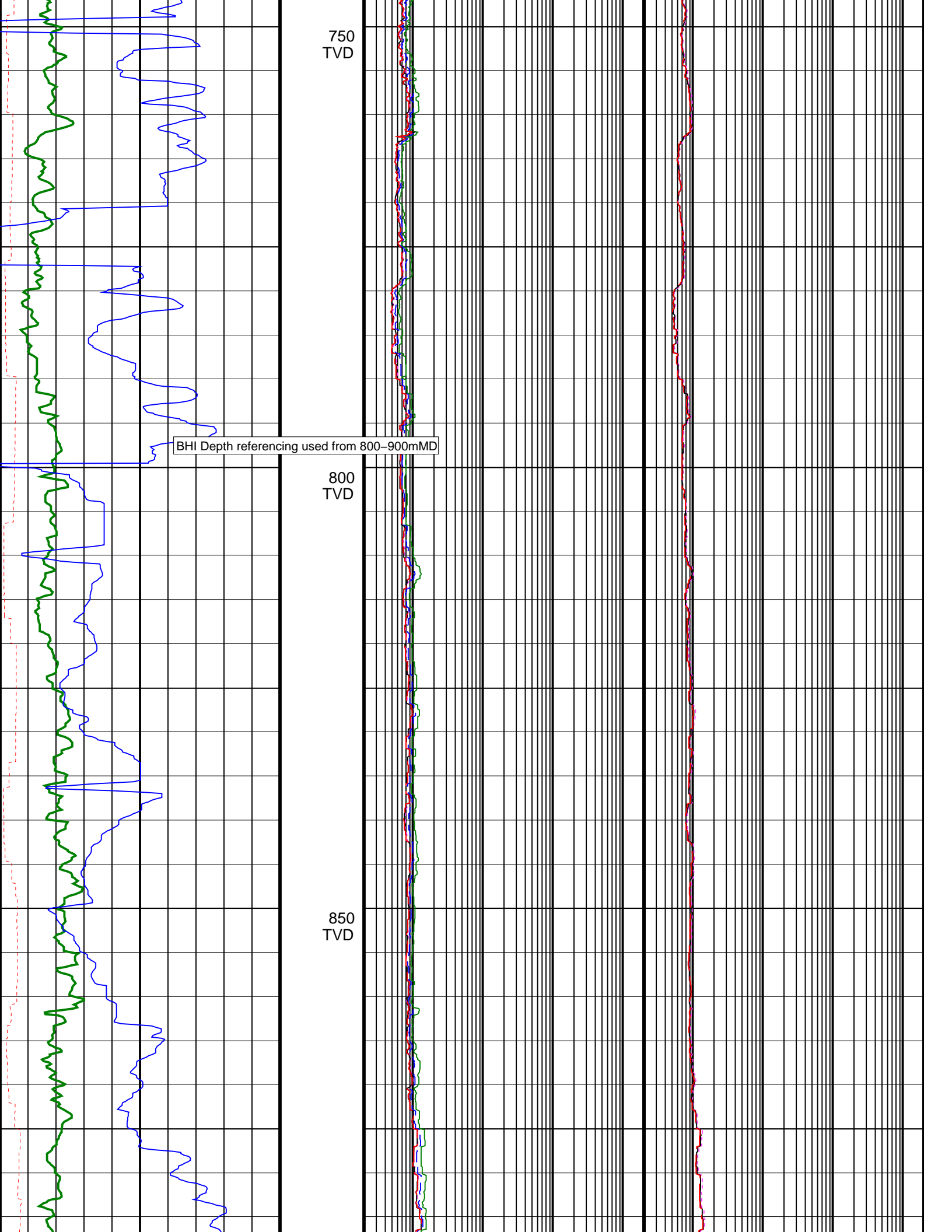




650
TVD

700
TVD



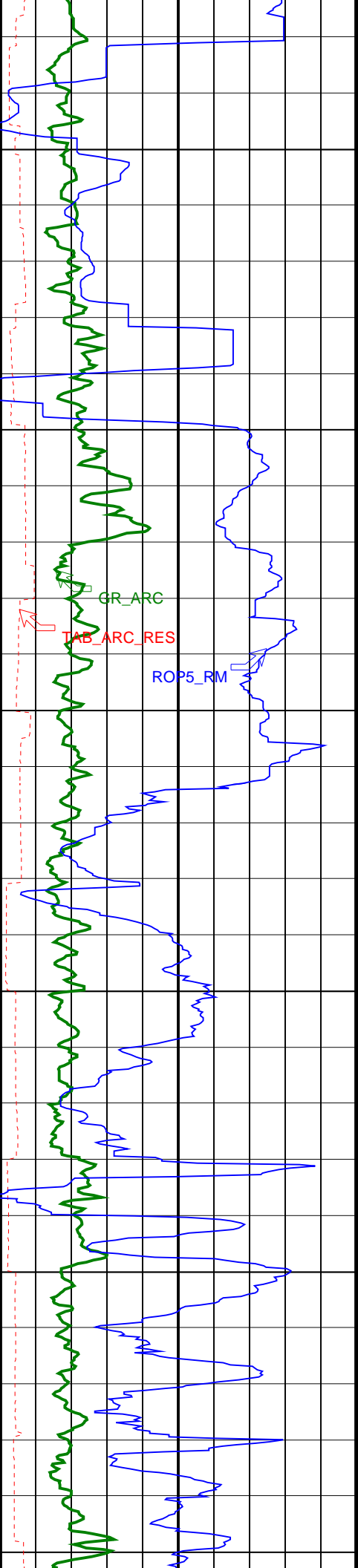


750
TVD

BHI Depth referencing used from 800-900mMD

800
TVD

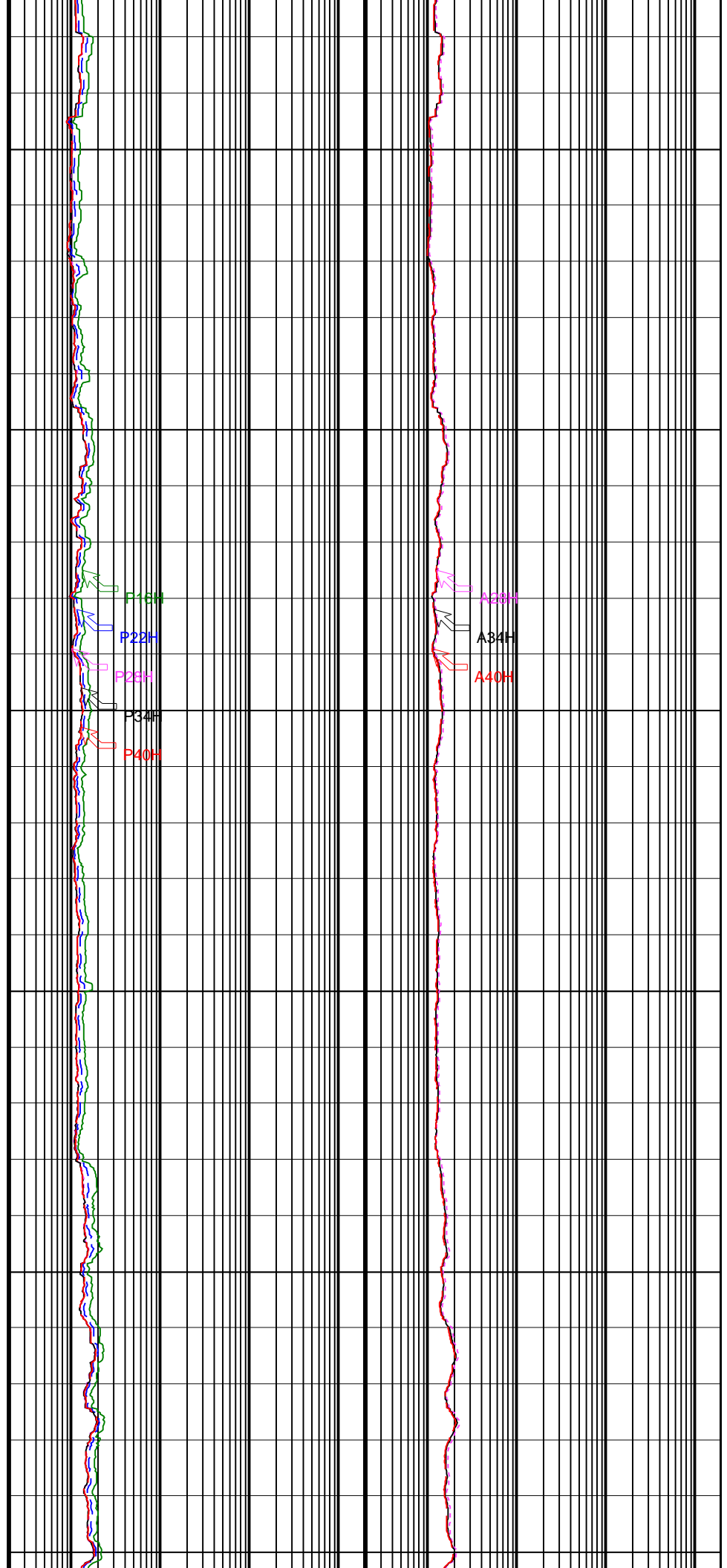
850
TVD

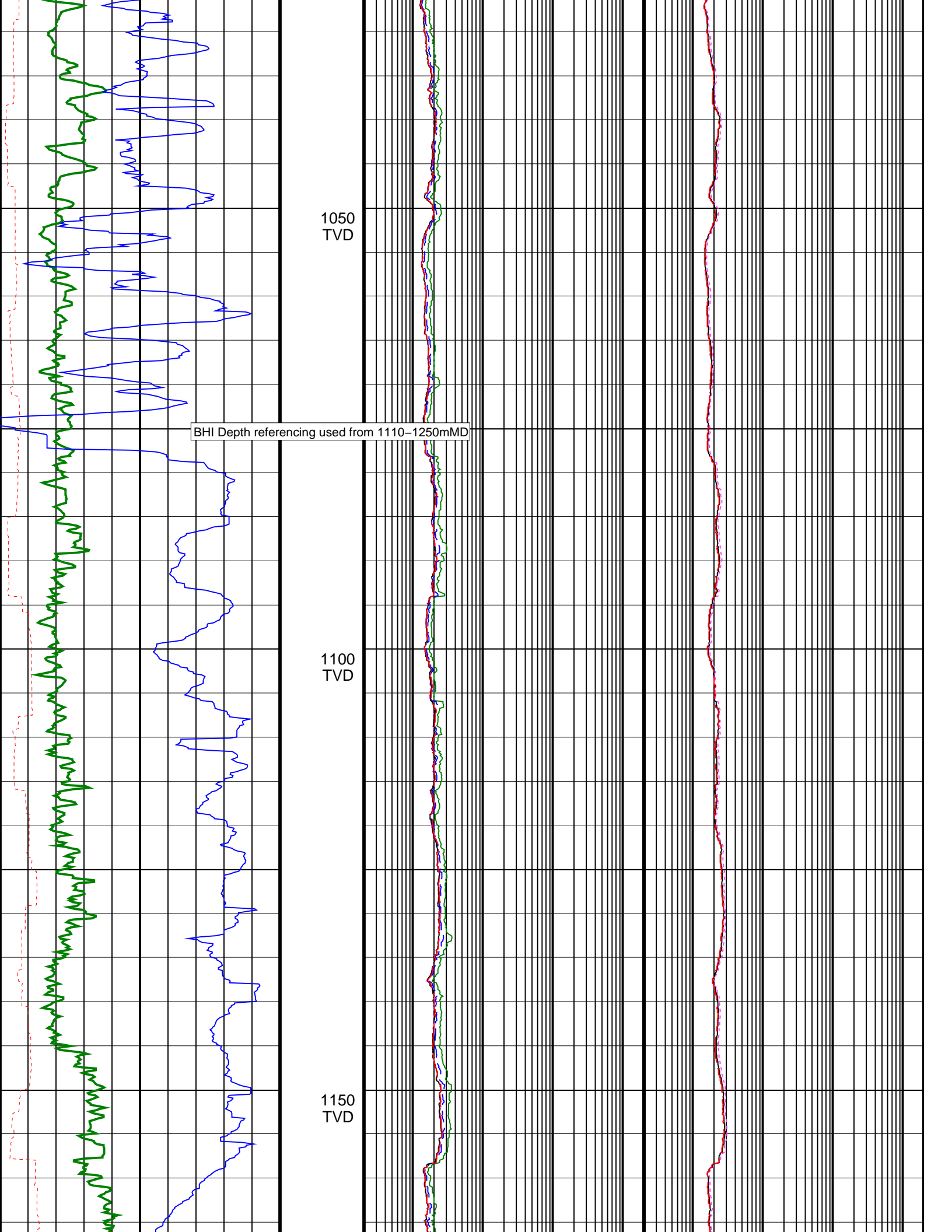


900
TVD

950
TVD

1000
TVD



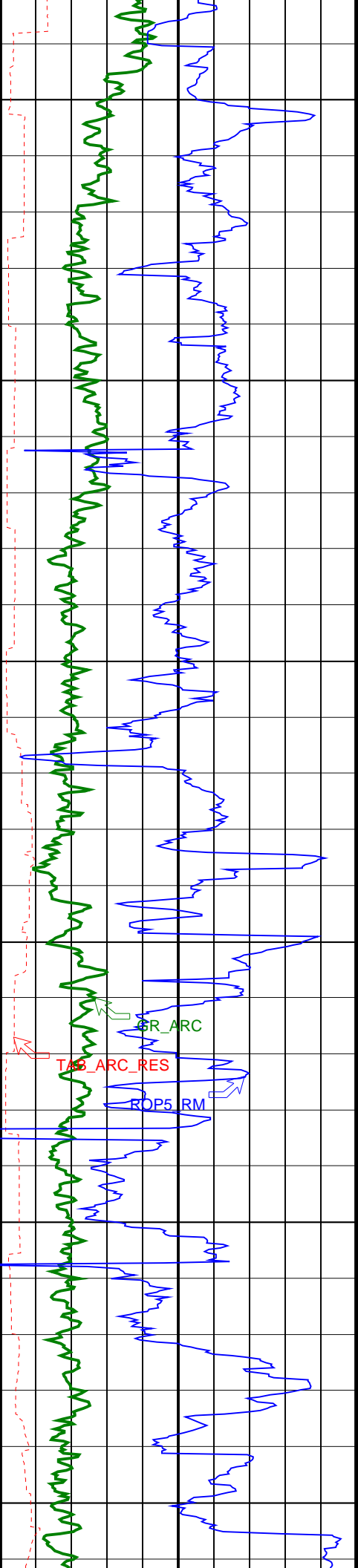


1050
TVD

BHI Depth referencing used from 1110-1250mMD

1100
TVD

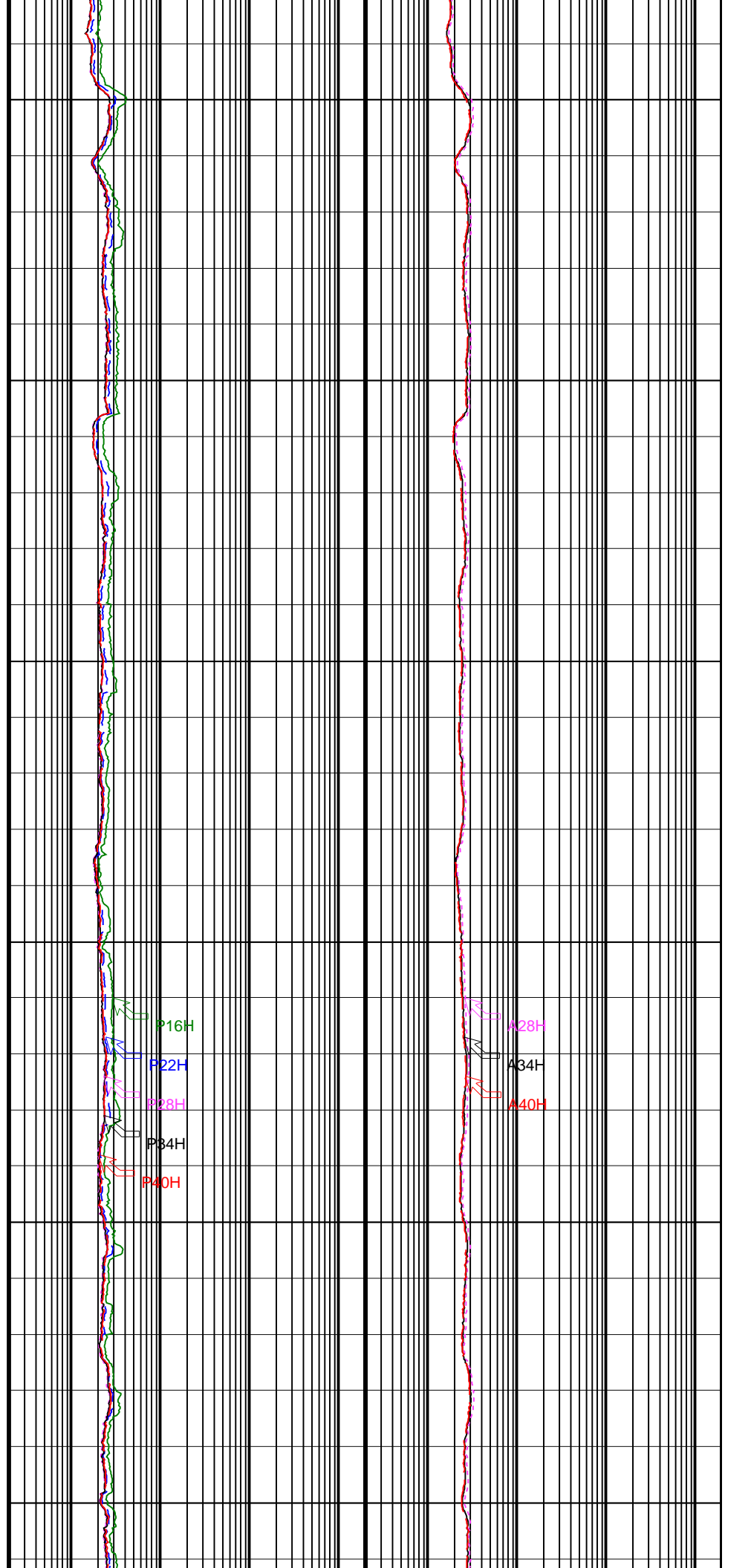
1150
TVD



1200
TVD

1250
TVD

1300
TVD



P16H

P22H

P28H

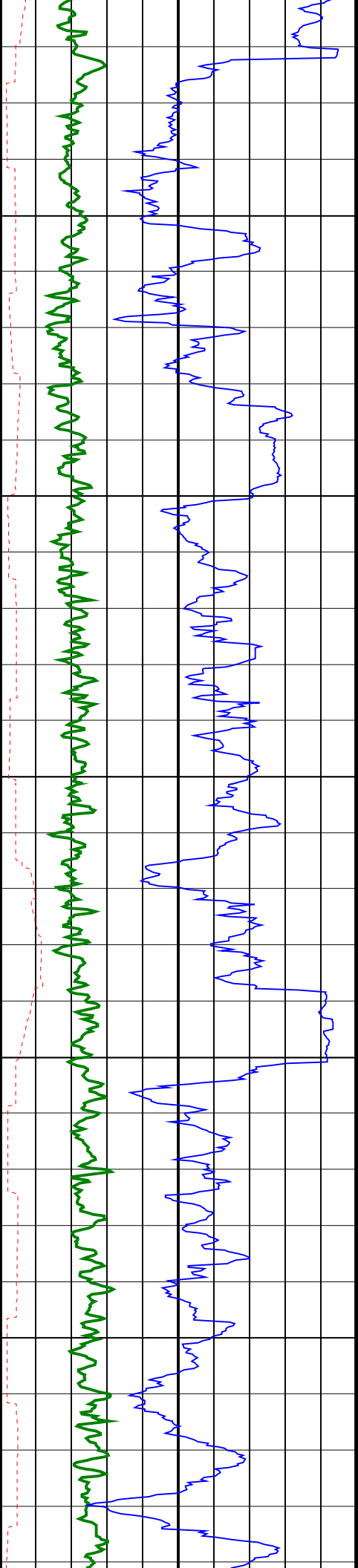
P34H

P40H

A28H

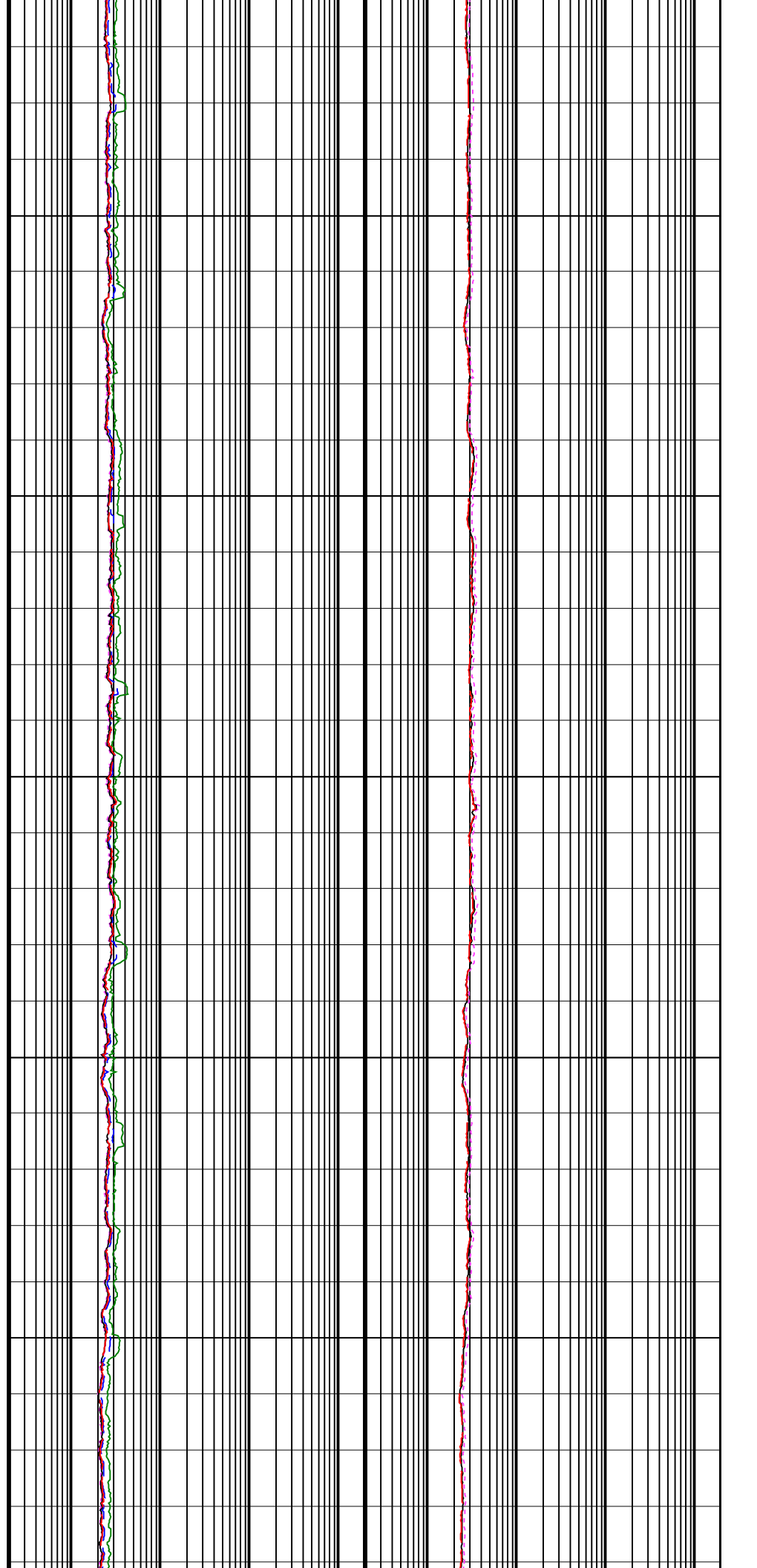
A34H

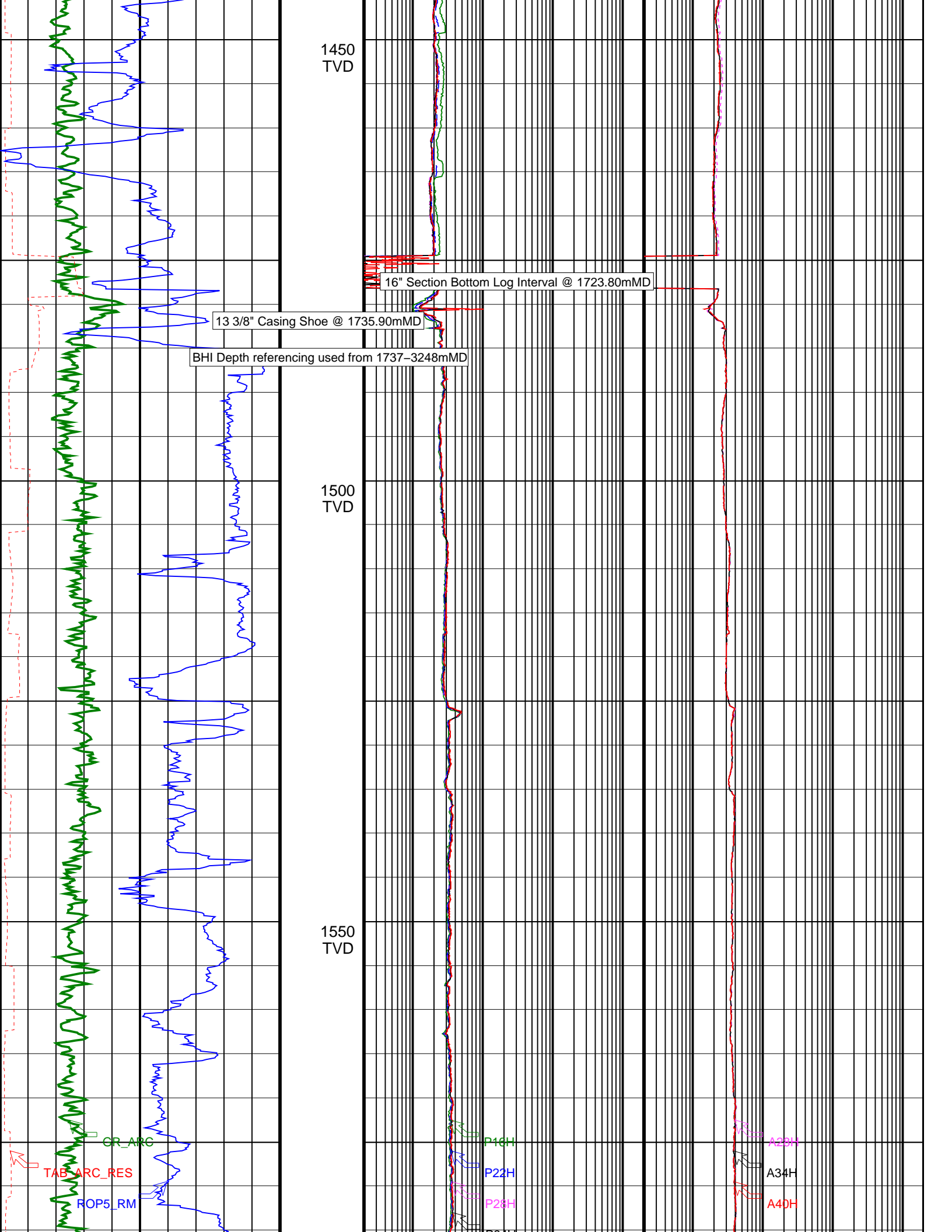
A40H

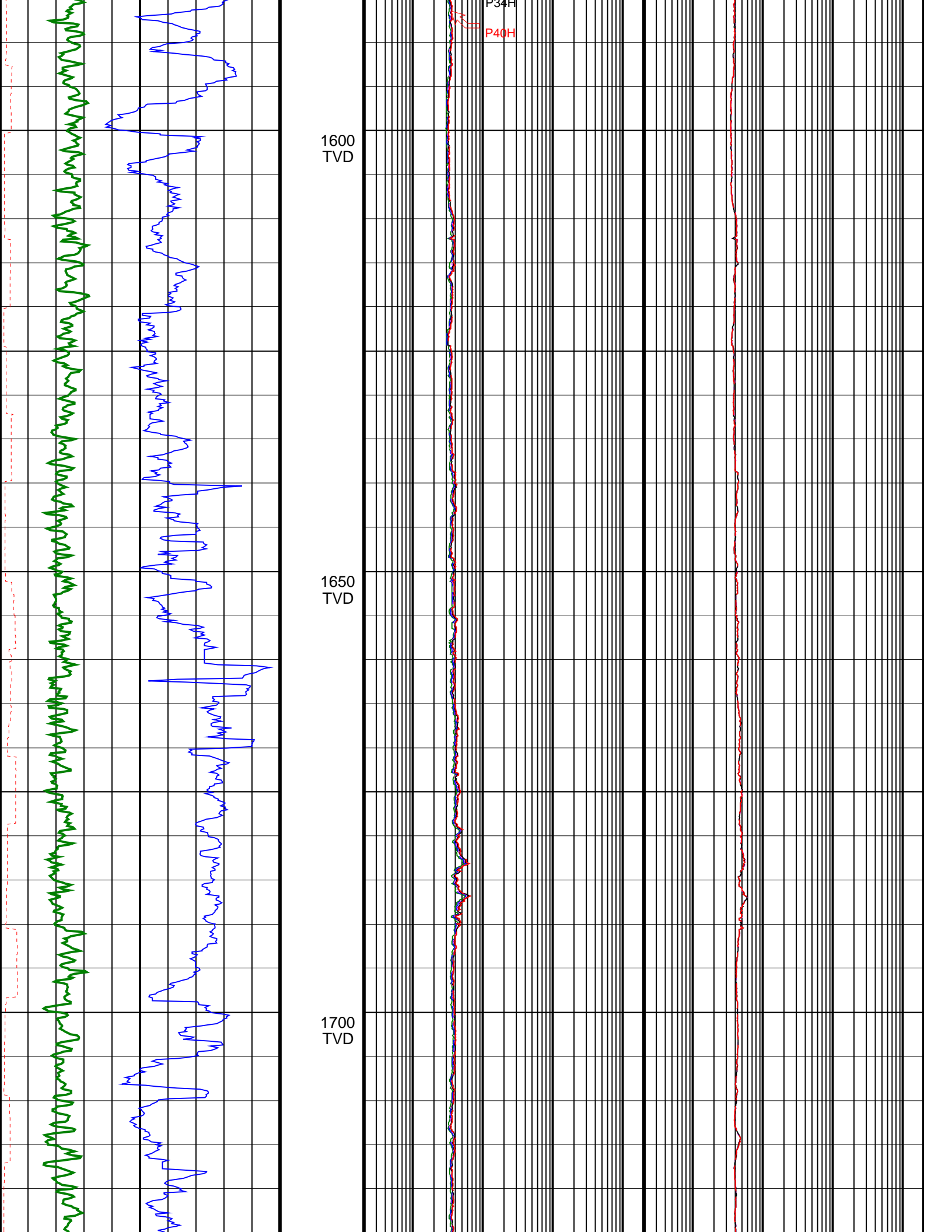


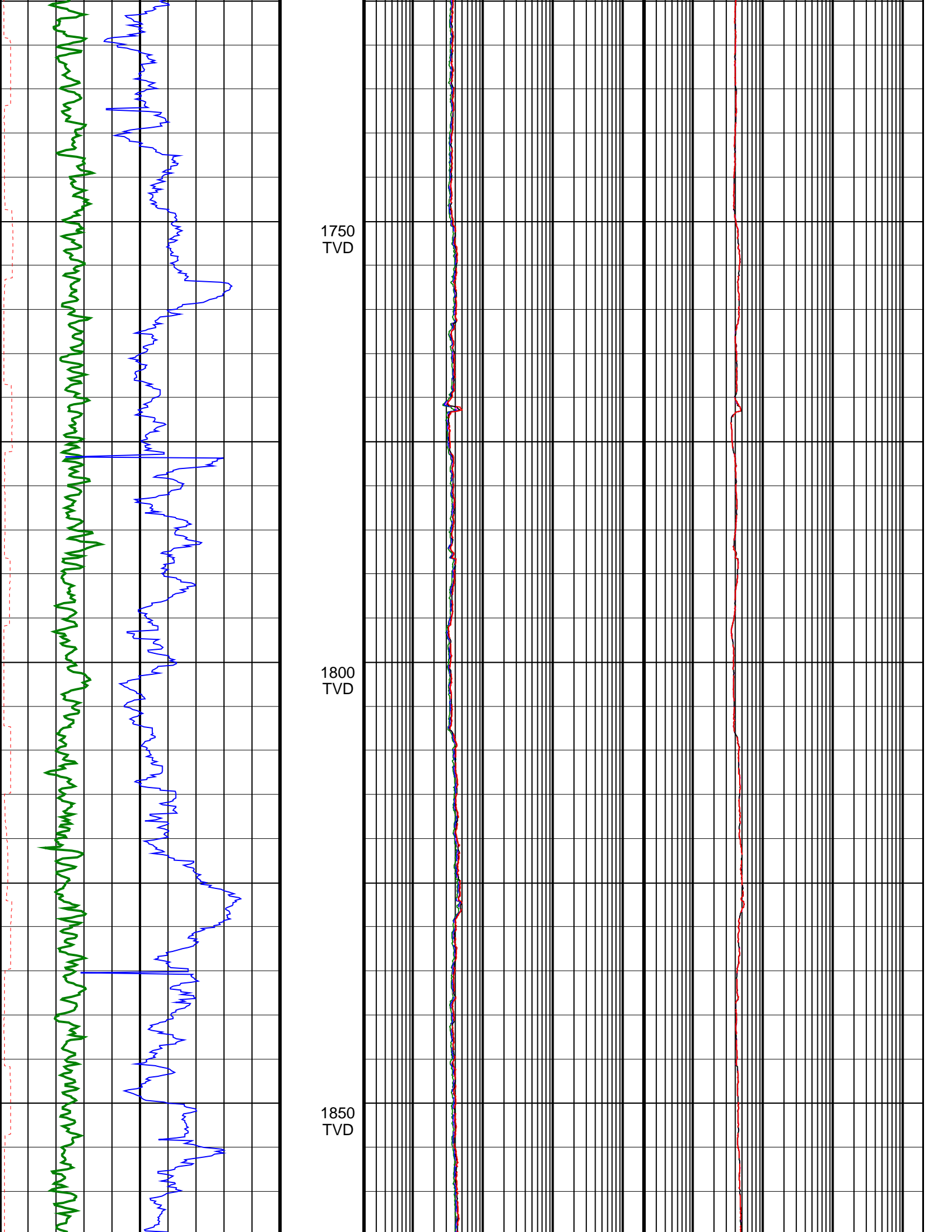
1350
TVD

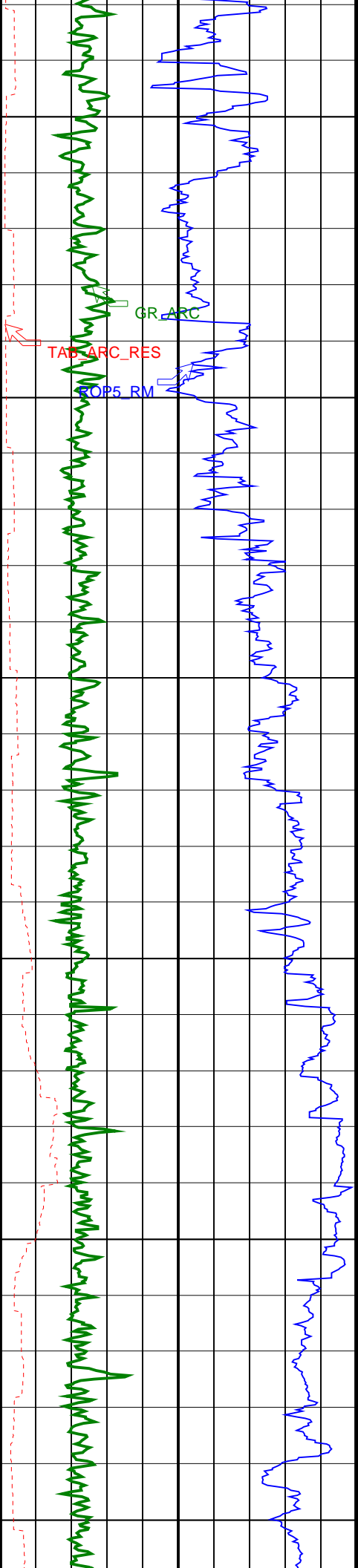
1400
TVD







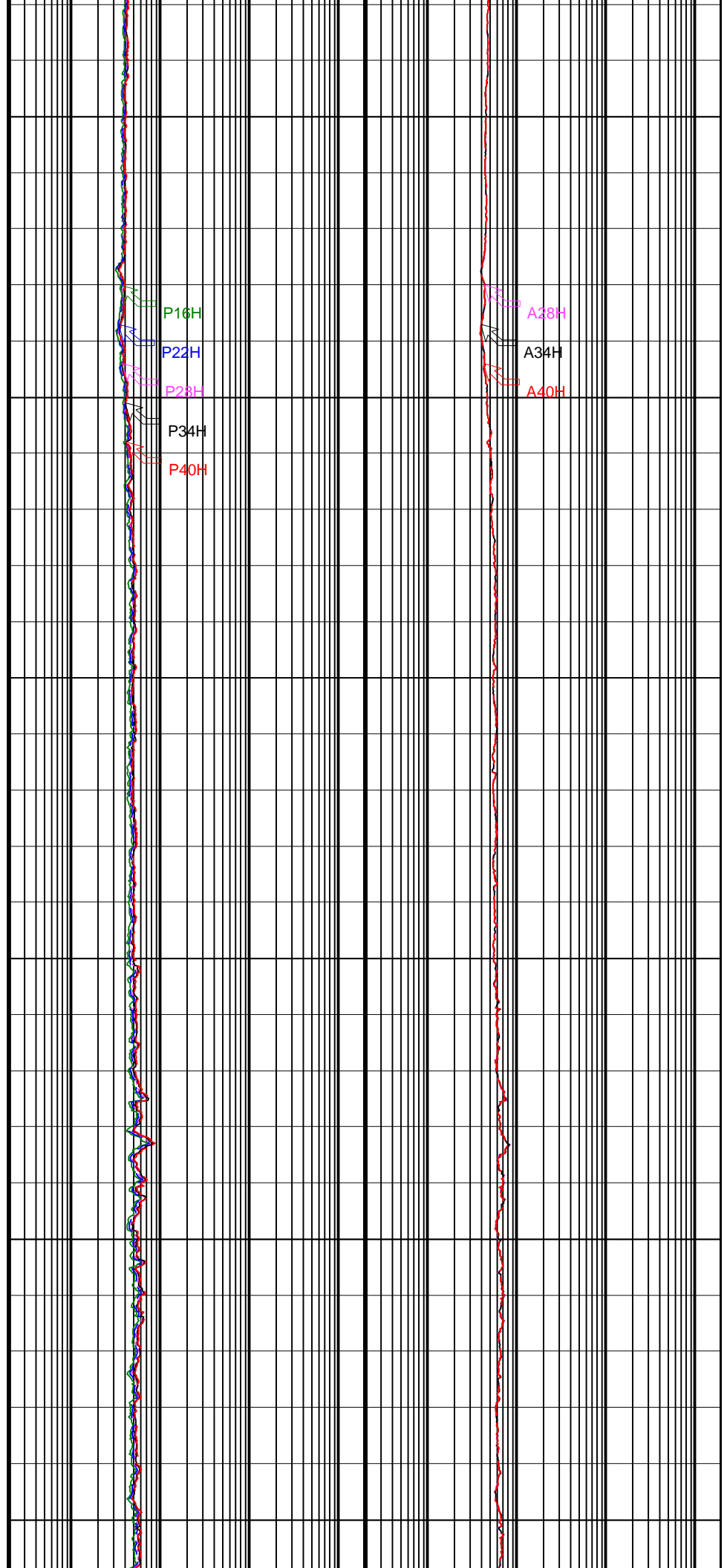


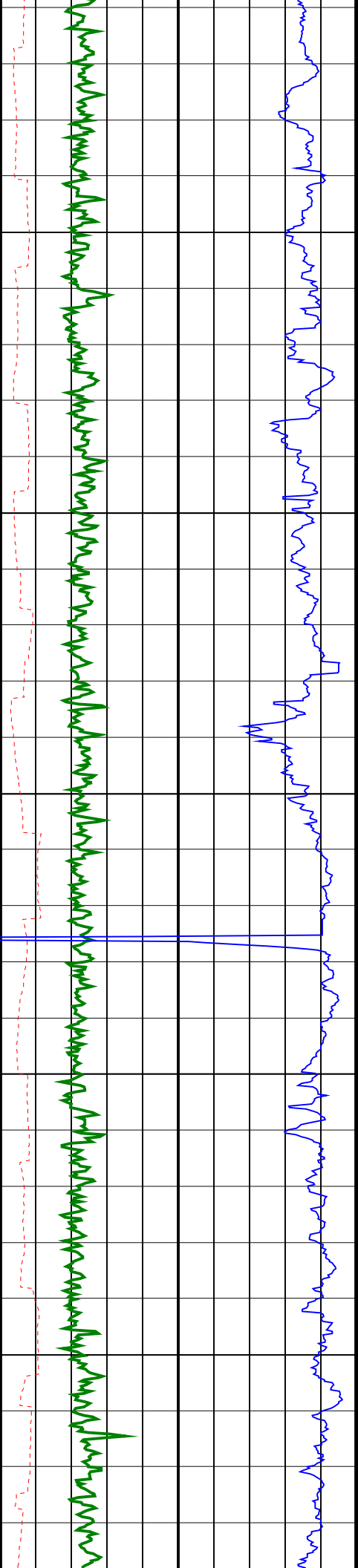


1900
TVD

1950
TVD

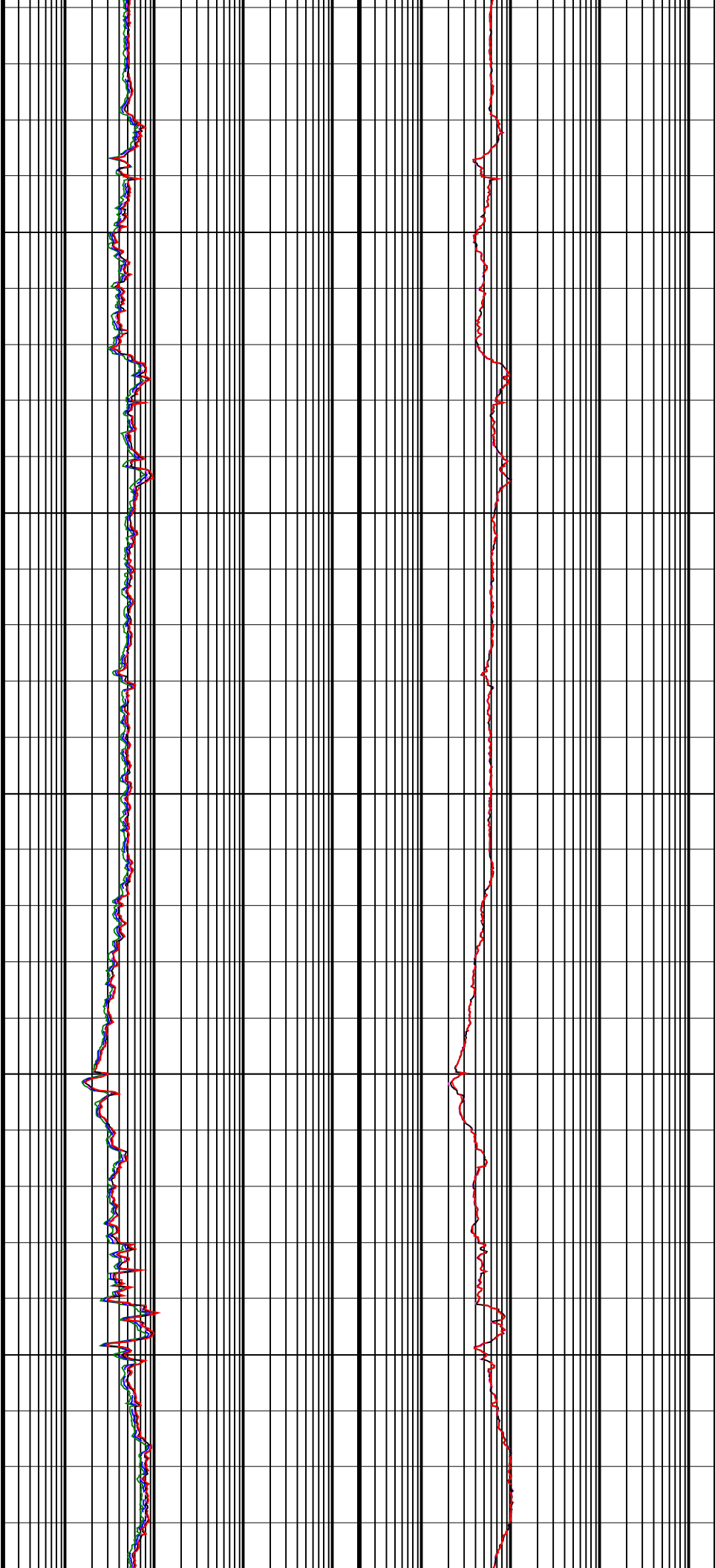
2000
TVD

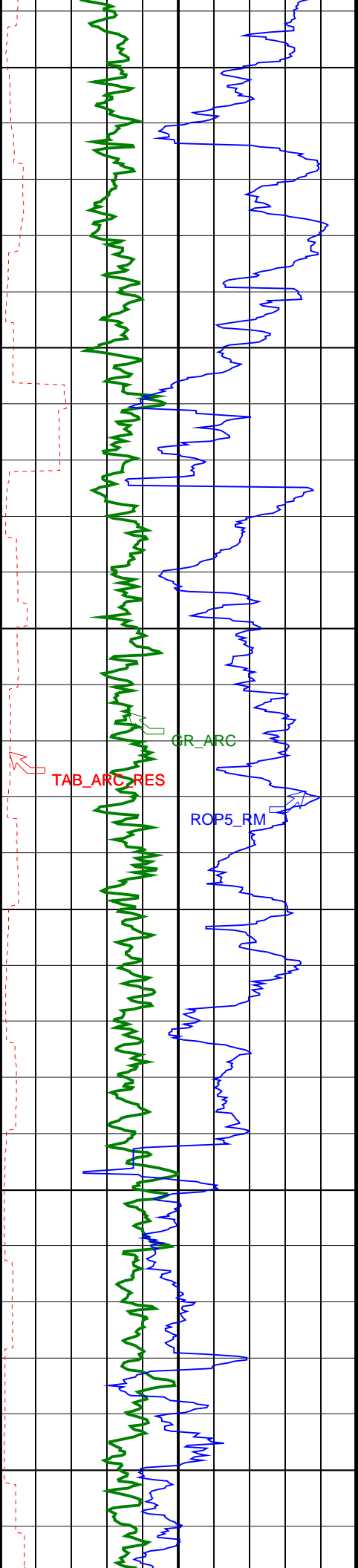




2050
TVD

2100
TVD

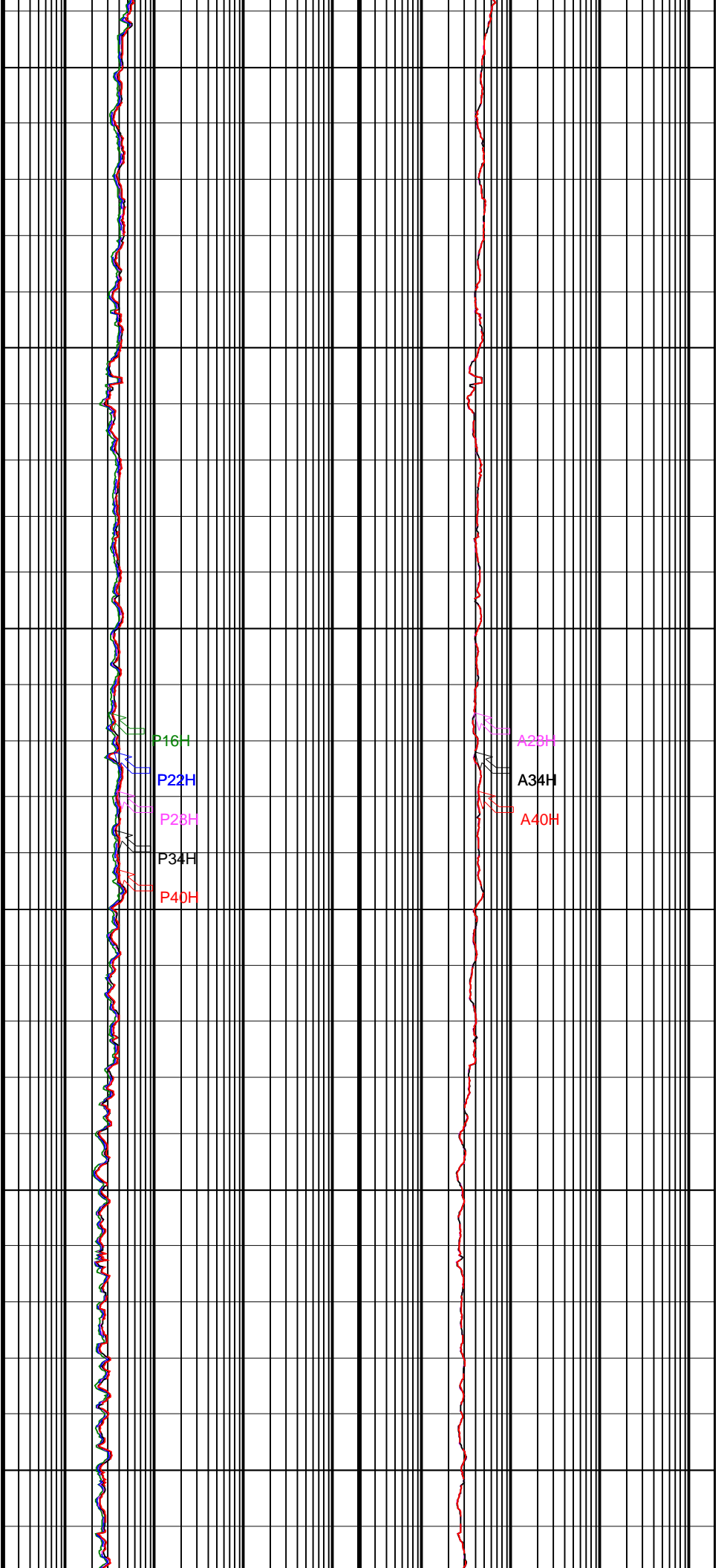




2150
TVD

2200
TVD

2250
TVD



P16H

P22H

P23H

P34H

P40H

A23H

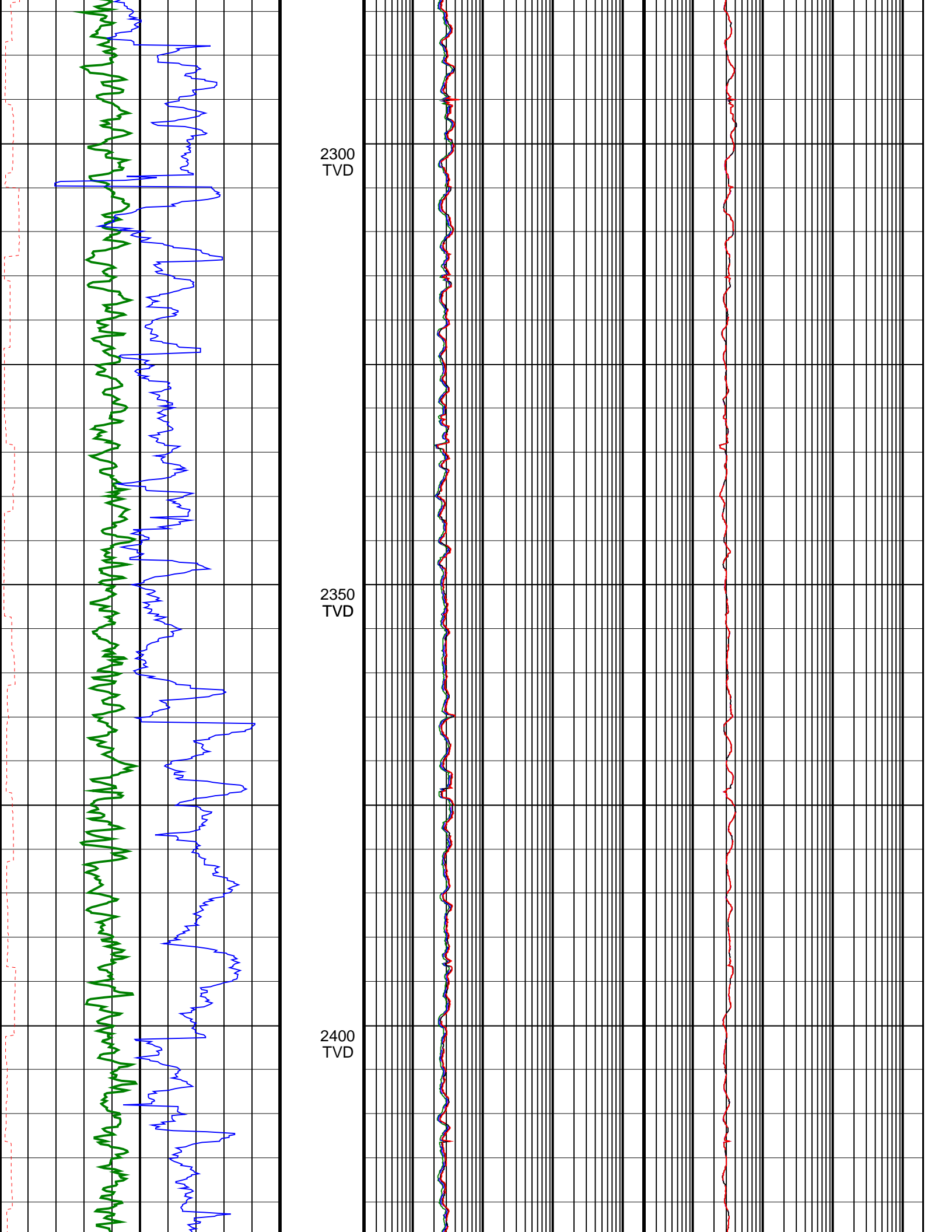
A34H

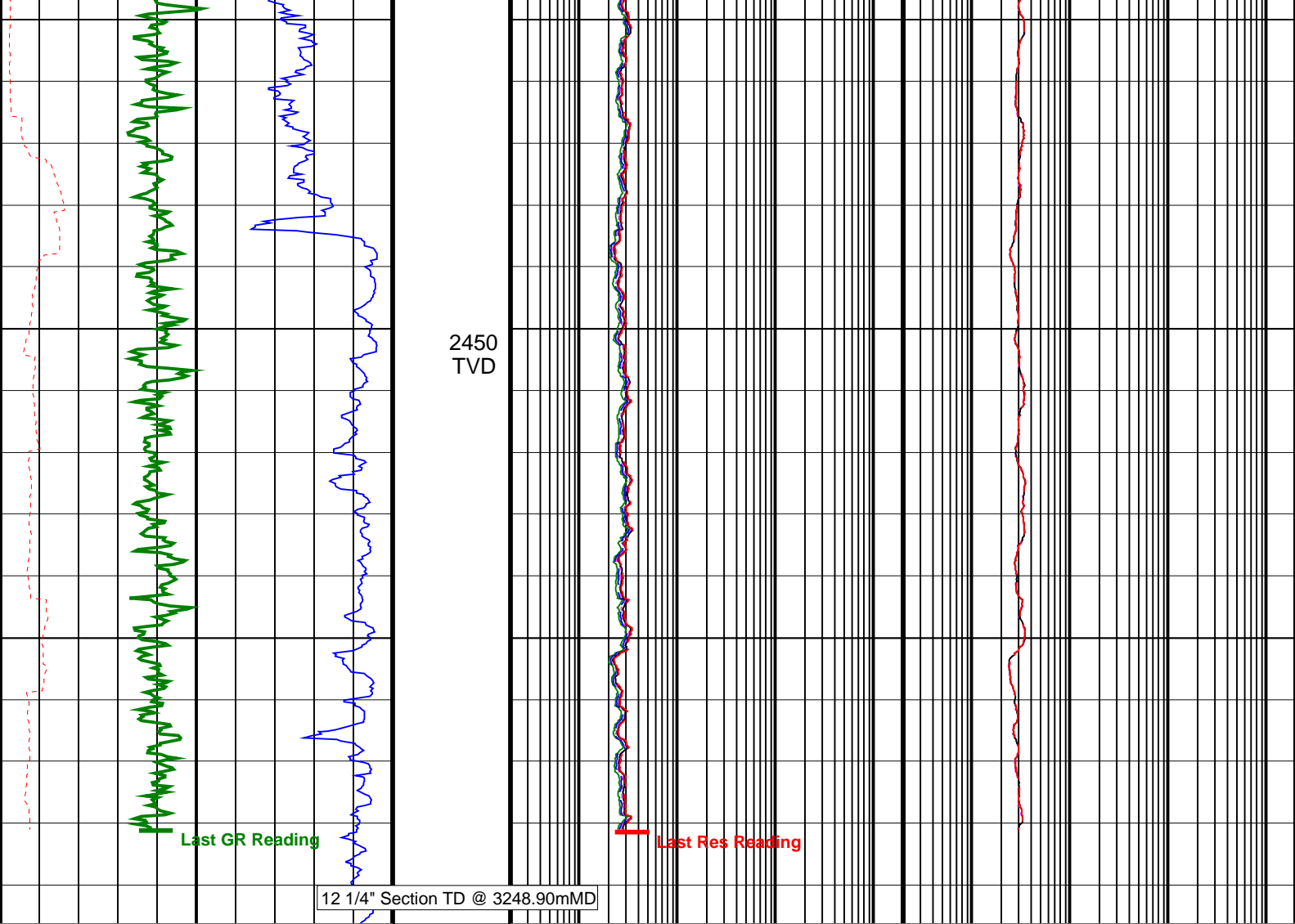
A40H

TAB_ARC_RES

GR_ARC

ROP5_RM





12 1/4" Section TD @ 3248.90mMD

| | |
|--|-----|
| ARC Gamma Ray (GR_ARC) | |
| 0 (GAPI) | 200 |
| ARC Resistivity Time After Bit (TAB_ARC_RES) | |
| 0 (HR) | 10 |
| Rate of Penetration, Averaged over Last 5ft (ROP5_RM) | |
| 200 (M/HR) | 0 |

| | |
|---|------|
| ARC Phase-Shift Resistivity 16-in. at 2 MHz (P16H) | |
| 0.2 (OHMM) | 2000 |
| ARC Phase-Shift Resistivity 22-in. at 2 MHz (P22H) | |
| 0.2 (OHMM) | 2000 |
| ARC Phase-Shift Resistivity 28-in. at 2 MHz (P28H) | |
| 0.2 (OHMM) | 2000 |
| ARC Phase-Shift Resistivity 34-in. at 2 MHz (P34H) | |
| 0.2 (OHMM) | 2000 |
| ARC Phase-Shift Resistivity 40-in. at 2 MHz (P40H) | |
| 0.2 (OHMM) | 2000 |

| | |
|---|------|
| ARC Attenuation Resistivity 28-in. at 2 MHz (A28H) | |
| 0.2 (OHMM) | 2000 |
| ARC Attenuation Resistivity 34-in. at 2 MHz (A34H) | |
| 0.2 (OHMM) | 2000 |
| ARC Attenuation Resistivity 40-in. at 2 MHz (A40H) | |
| 0.2 (OHMM) | 2000 |