

# Elver-1\_VISION Resistivity RM 500MD

Format: ARC\_500MD

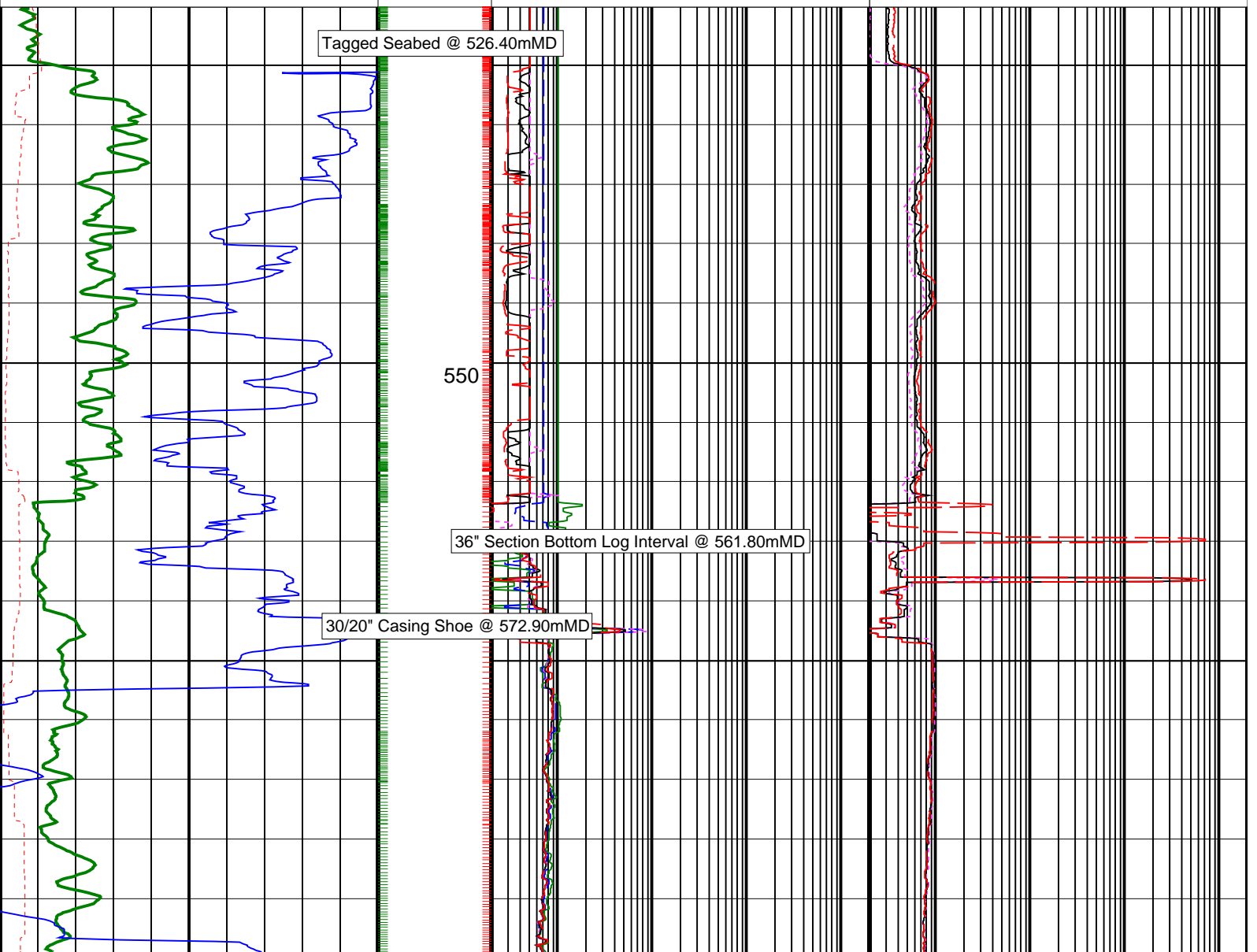
Vertical Scale: 1:500

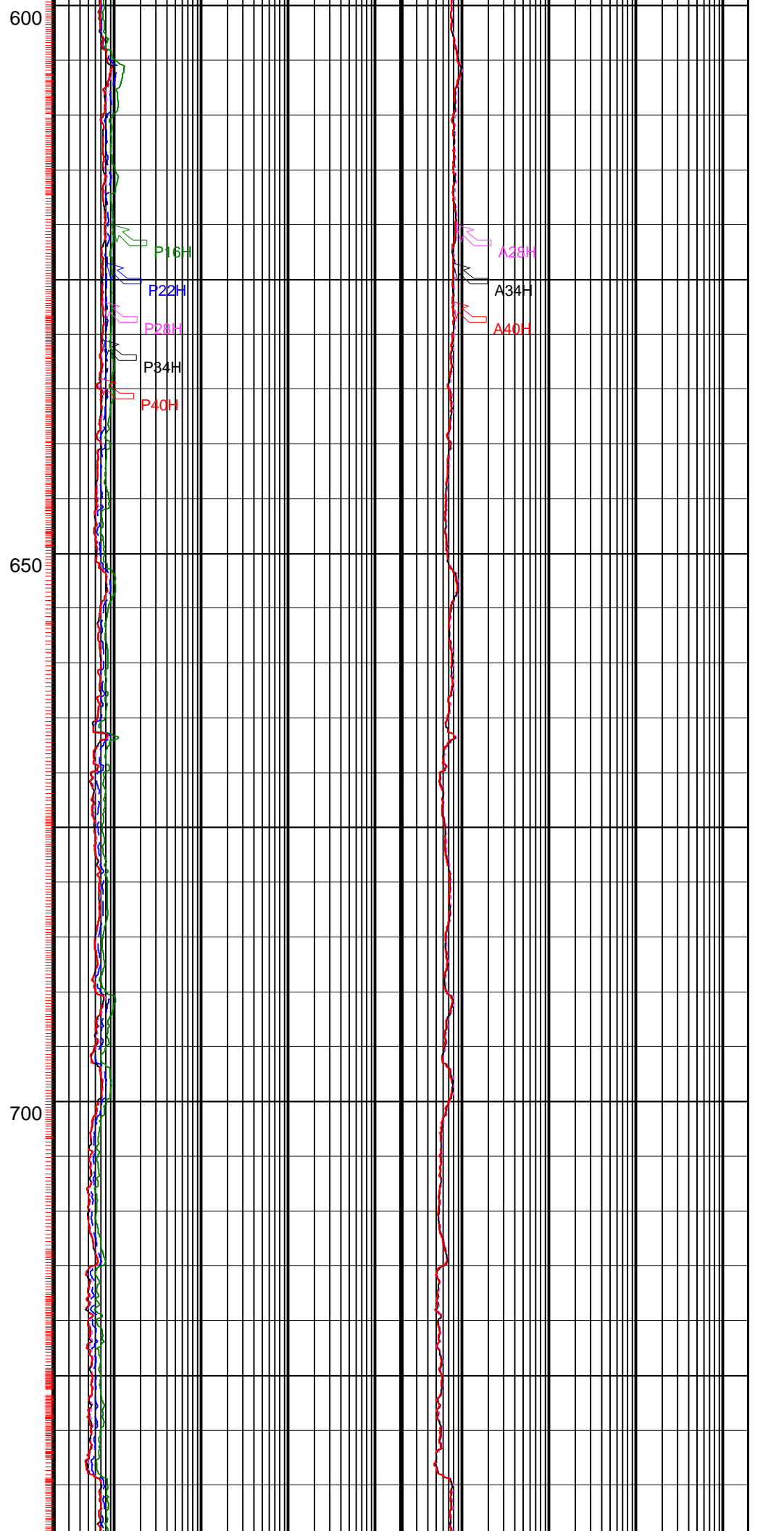
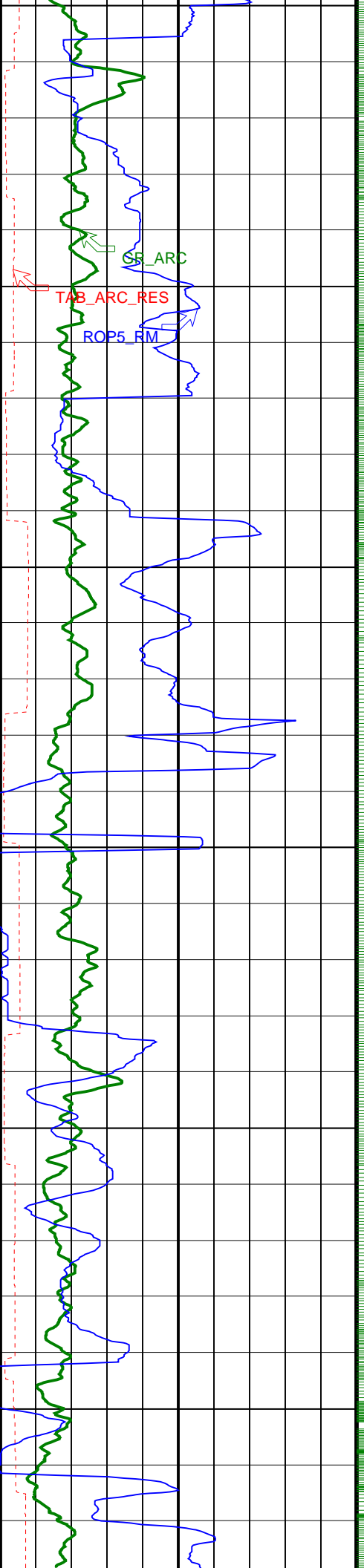
Graphics File Created: 30-Dec-2008 21:49

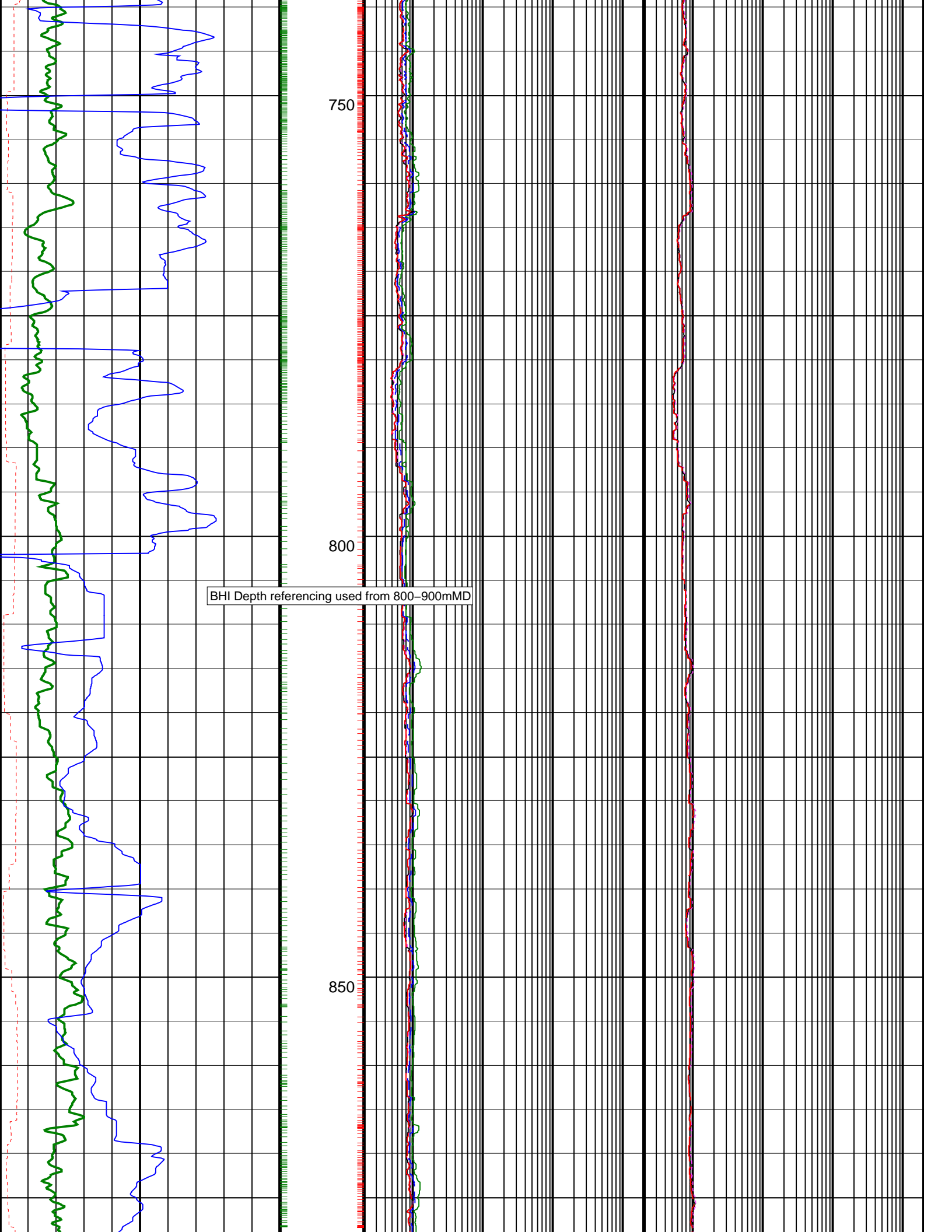
## PIP SUMMARY

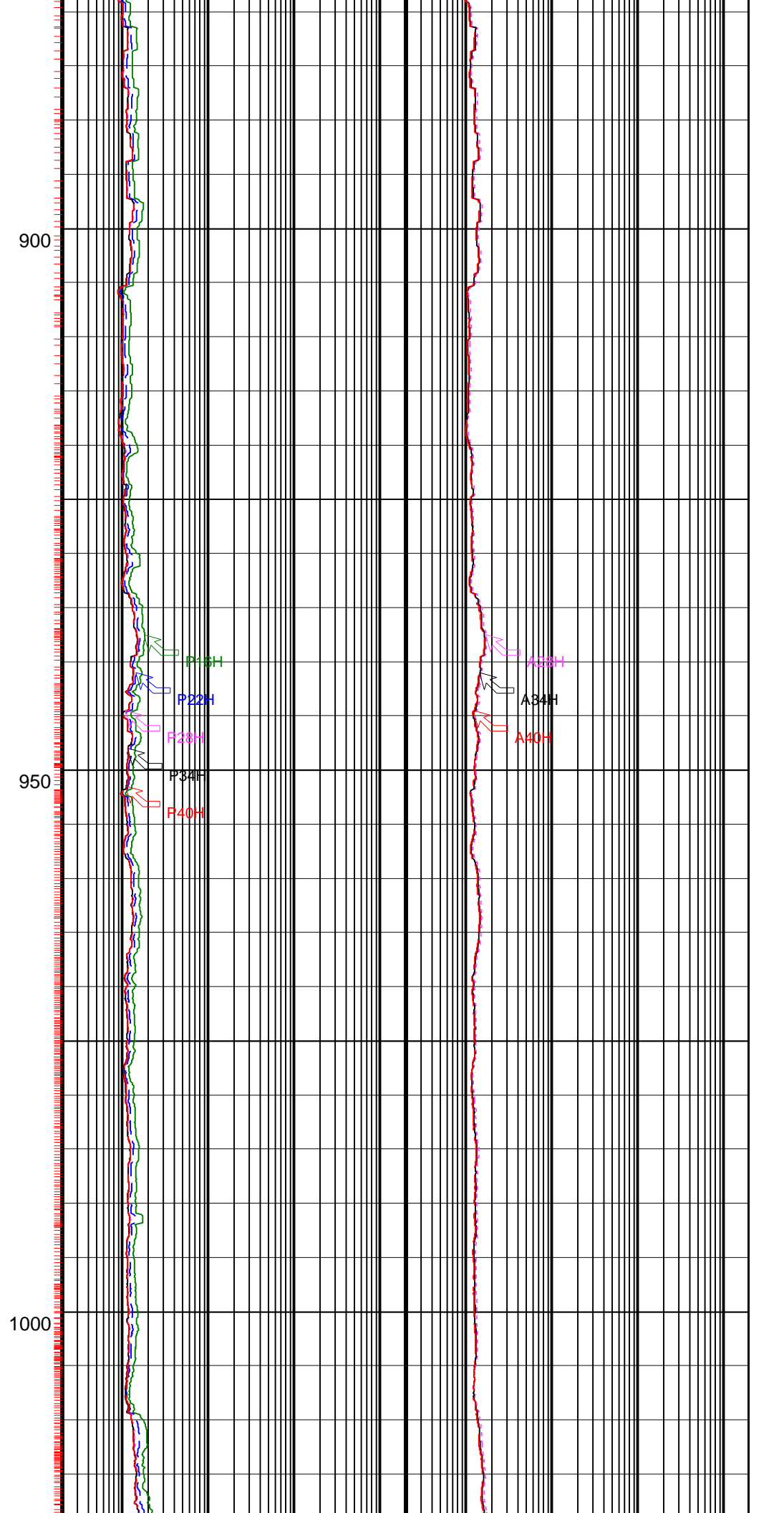
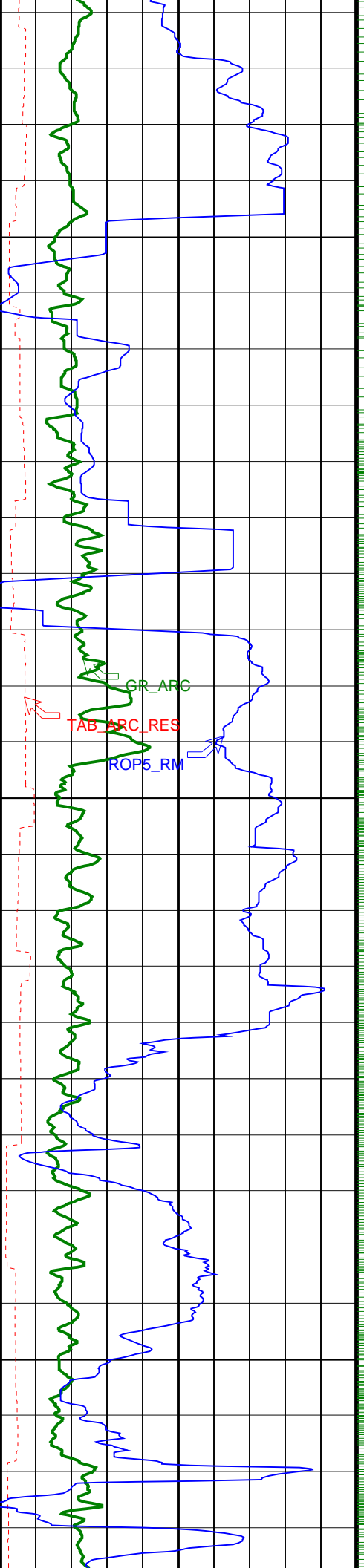
- └ ARC Gamma Ray Samples
- └ ARC Resistivity Samples

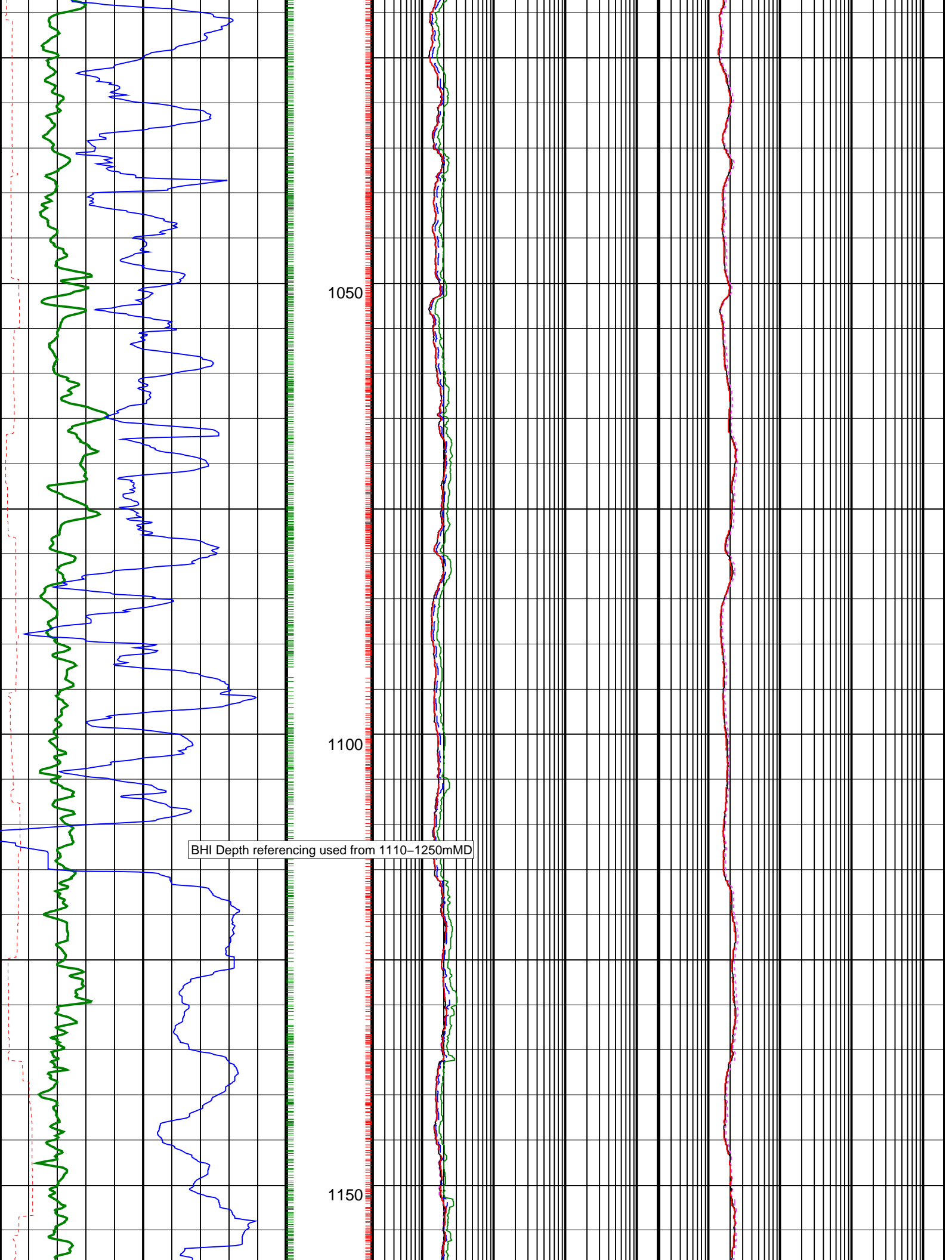
	<b>ARC Phase-Shift Resistivity 40-in. at 2 MHz (P40H)</b>			
	0.2	(OHMM)	2000	
	<b>ARC Phase-Shift Resistivity 34-in. at 2 MHz (P34H)</b>			
	0.2	(OHMM)	2000	
<b>Rate of Penetration, Averaged over Last 5ft (ROP5_RM)</b>	<b>ARC Phase-Shift Resistivity 28-in. at 2 MHz (P28H)</b>			<b>ARC Attenuation Resistivity 40-in. at 2 MHz (A40H)</b>
200 (M/HR)	0.2	(OHMM)	2000	0.2 (OHMM) 2000
<b>ARC Resistivity Time After Bit (TAB_ARC_RES)</b>	<b>ARC Phase-Shift Resistivity 22-in. at 2 MHz (P22H)</b>			<b>ARC Attenuation Resistivity 34-in. at 2 MHz (A34H)</b>
0 (HR) 10	0.2	(OHMM)	2000	0.2 (OHMM) 2000
<b>ARC Gamma Ray (GR_ARC)</b>	<b>ARC Phase-Shift Resistivity 16-in. at 2 MHz (P16H)</b>			<b>ARC Attenuation Resistivity 28-in. at 2 MHz (A28H)</b>
0 (GAPI) 200	0.2	(OHMM)	2000	0.2 (OHMM) 2000

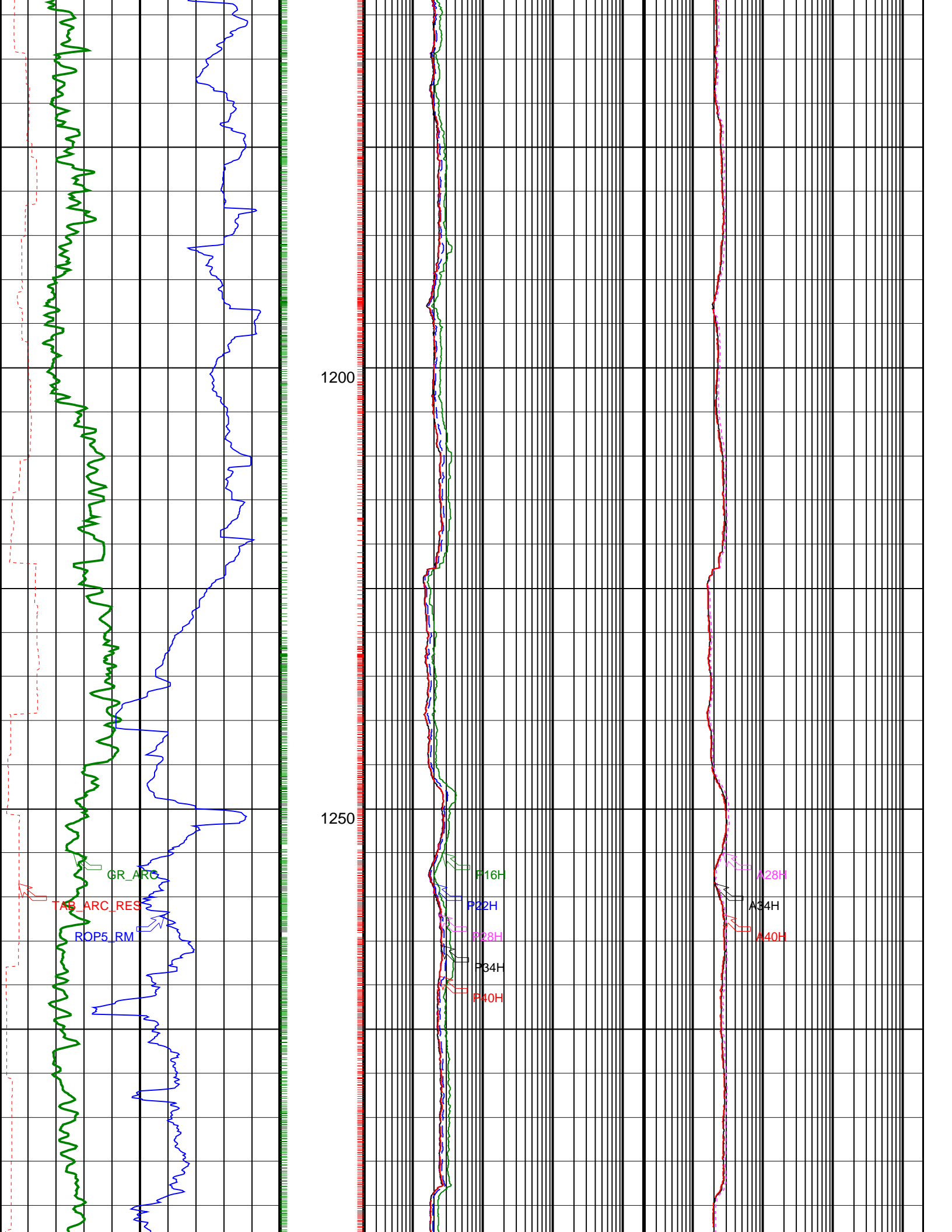


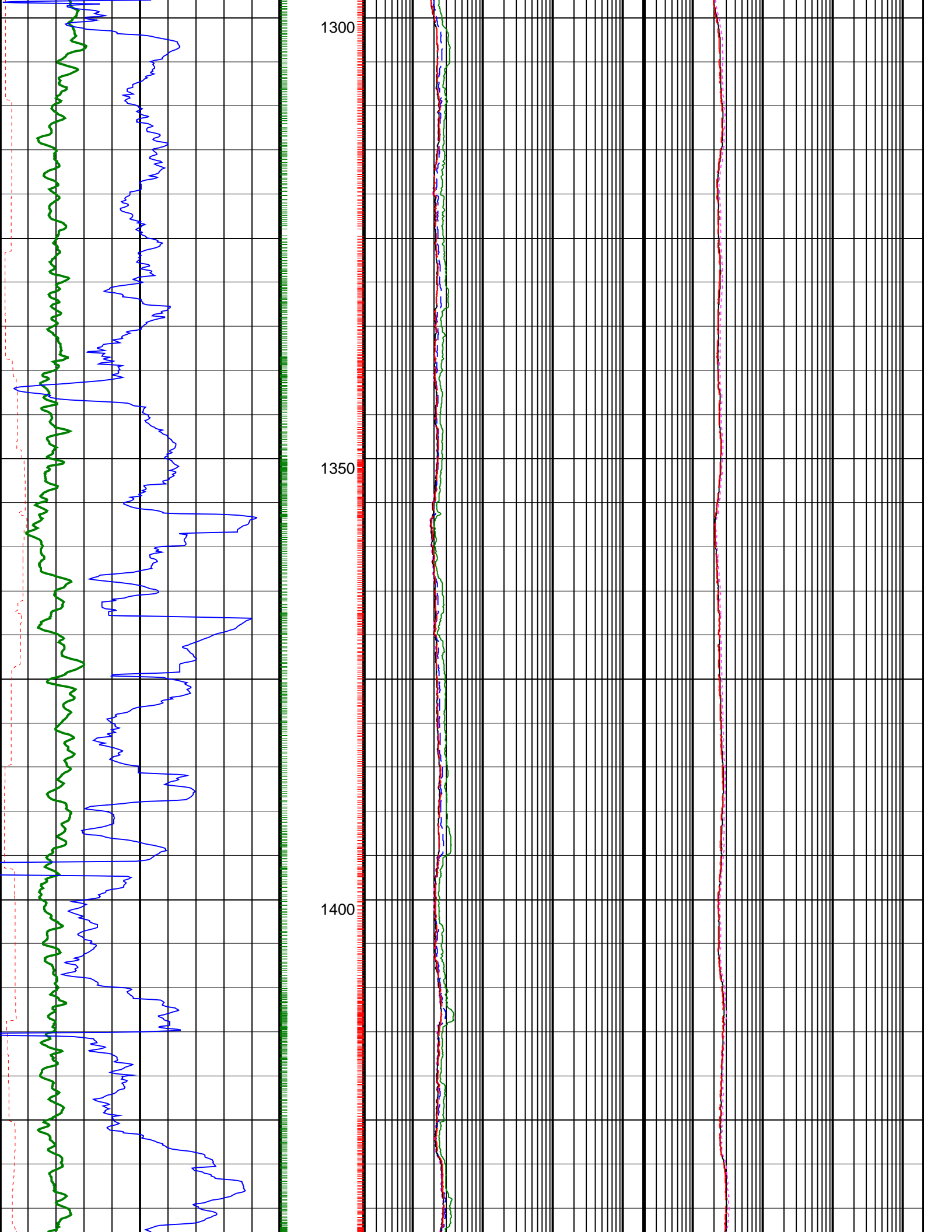


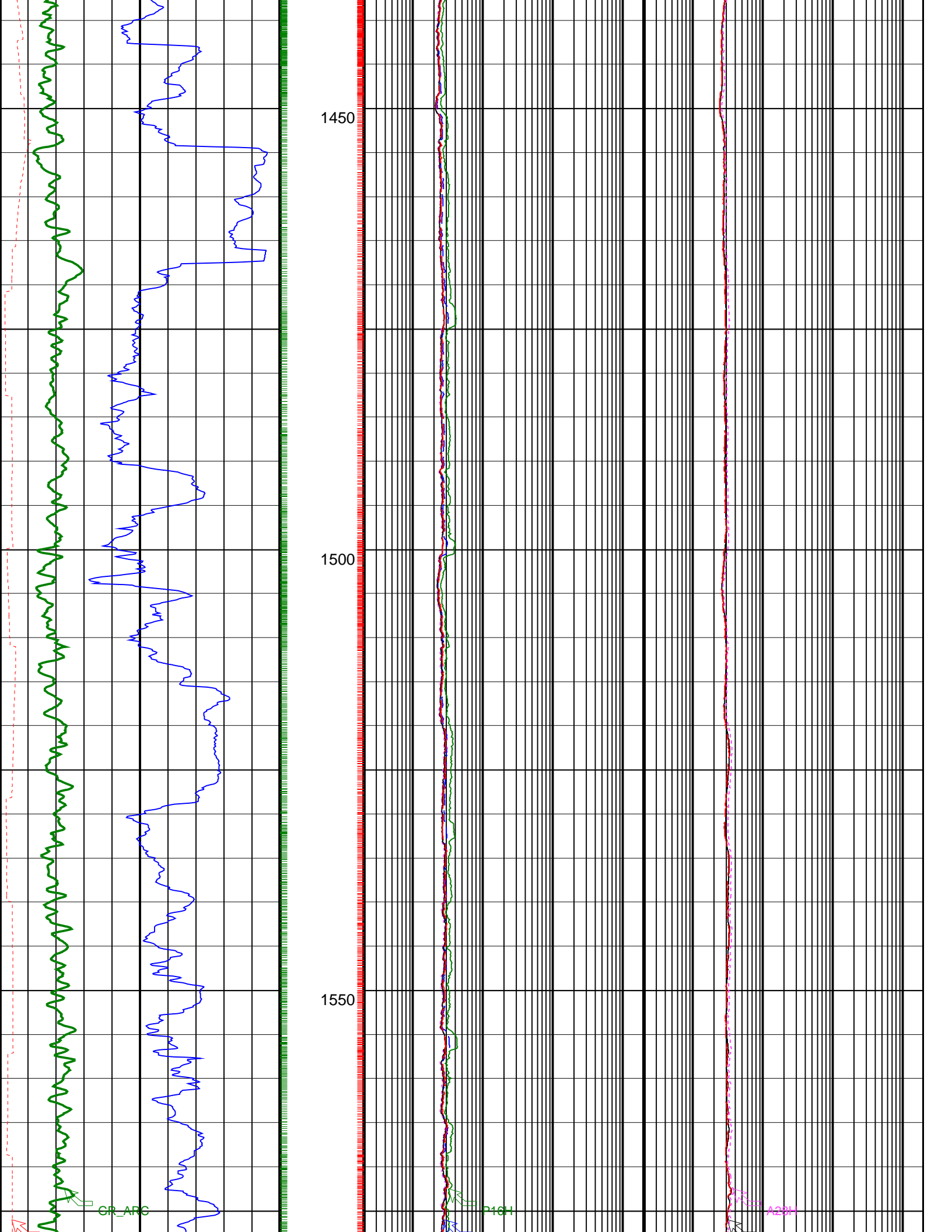




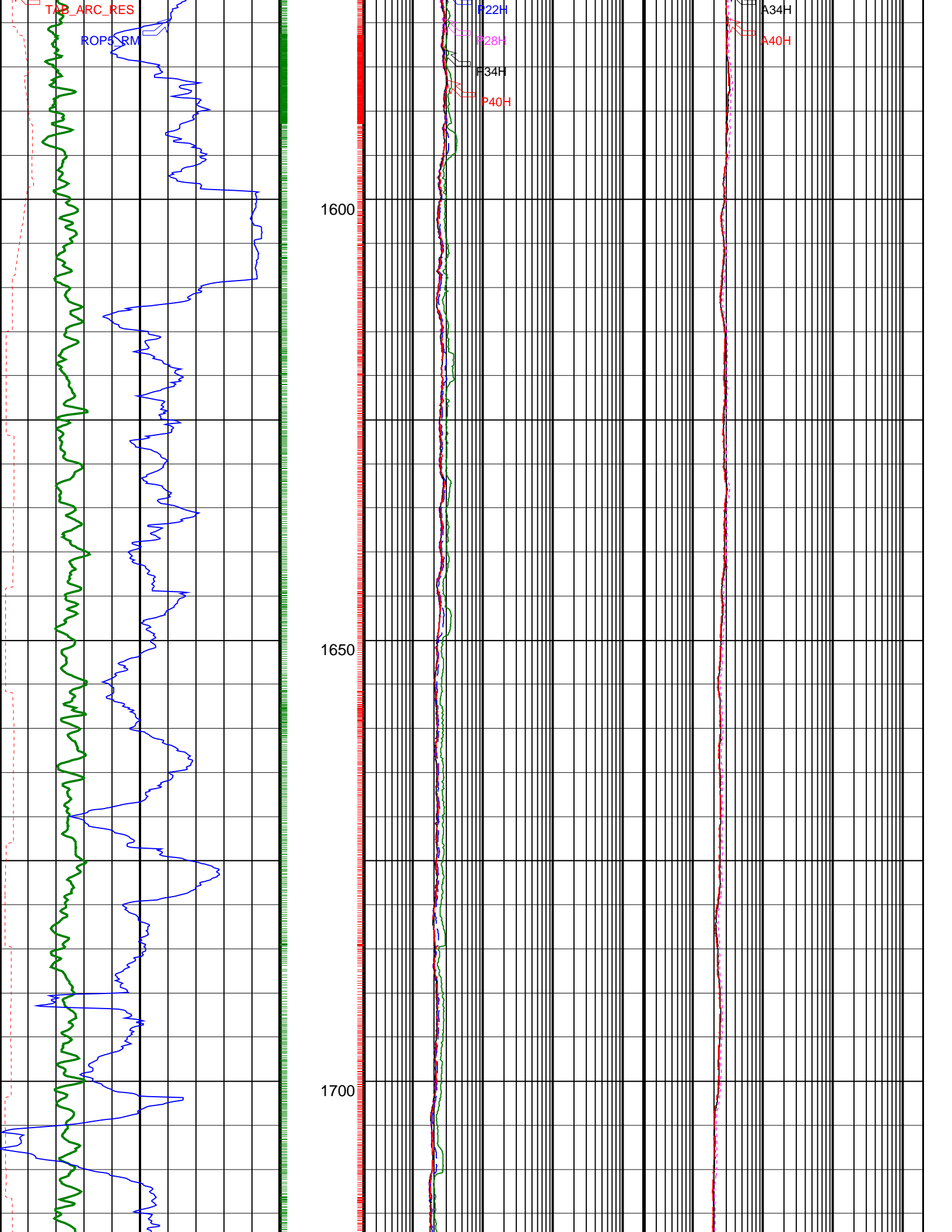


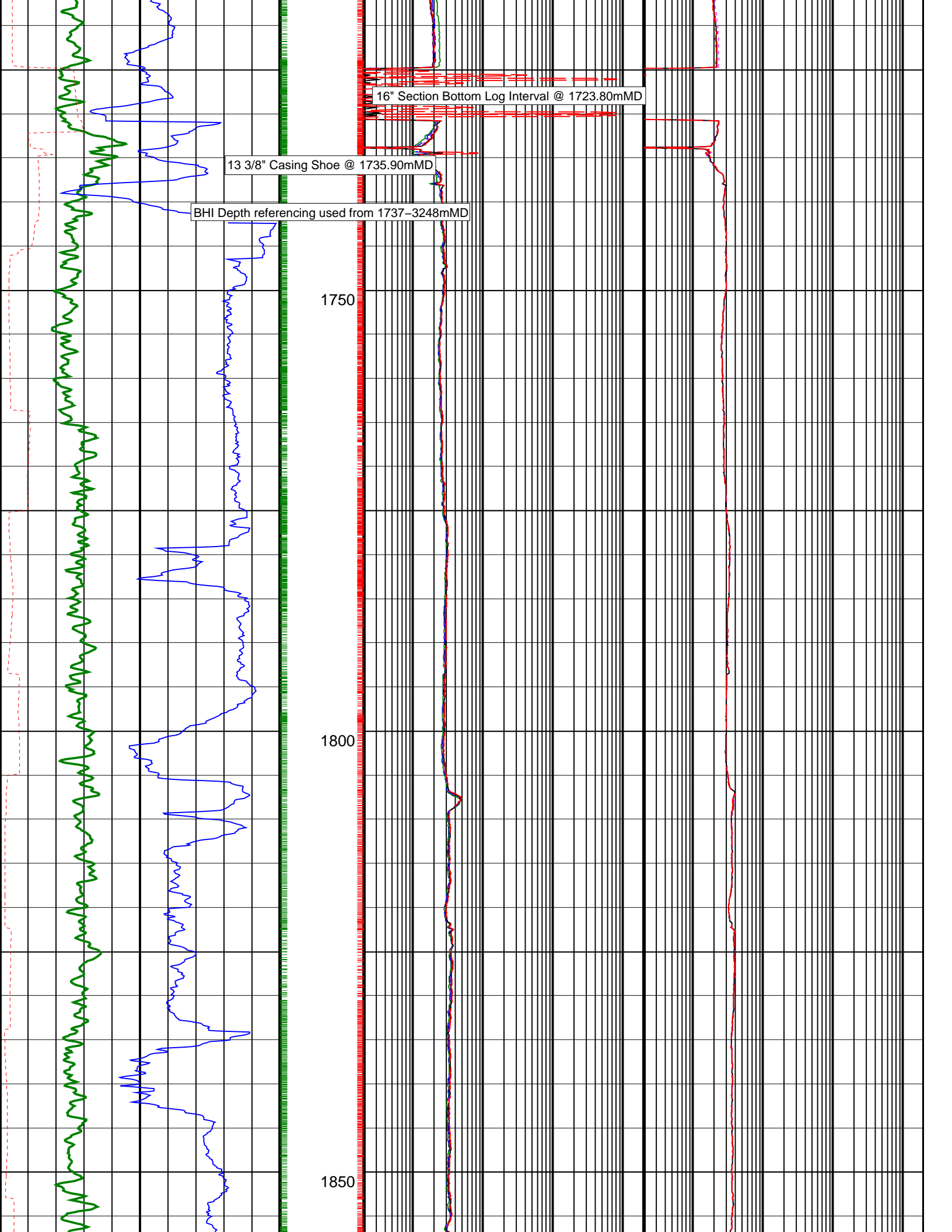












16" Section Bottom Log Interval @ 1723.80mMD

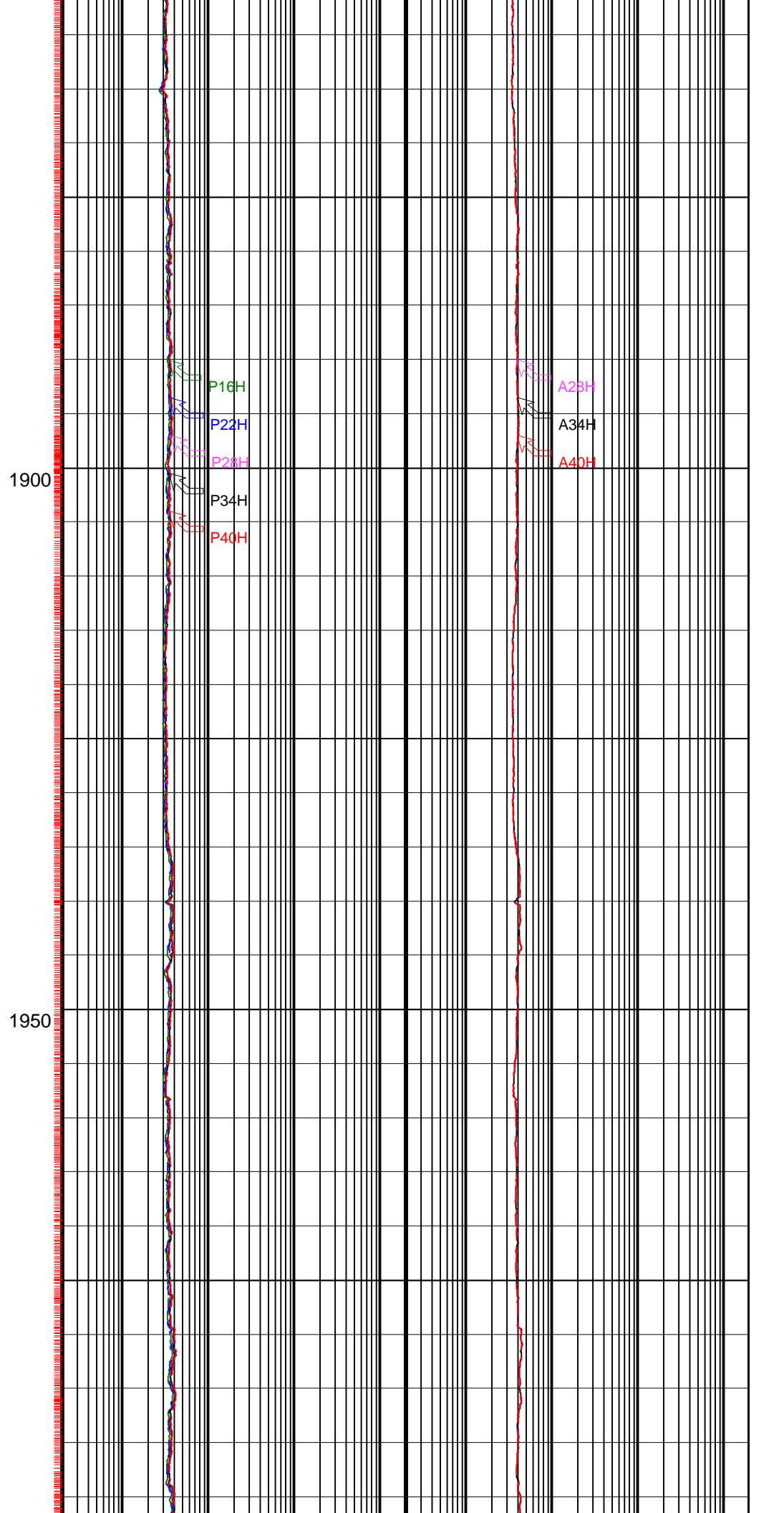
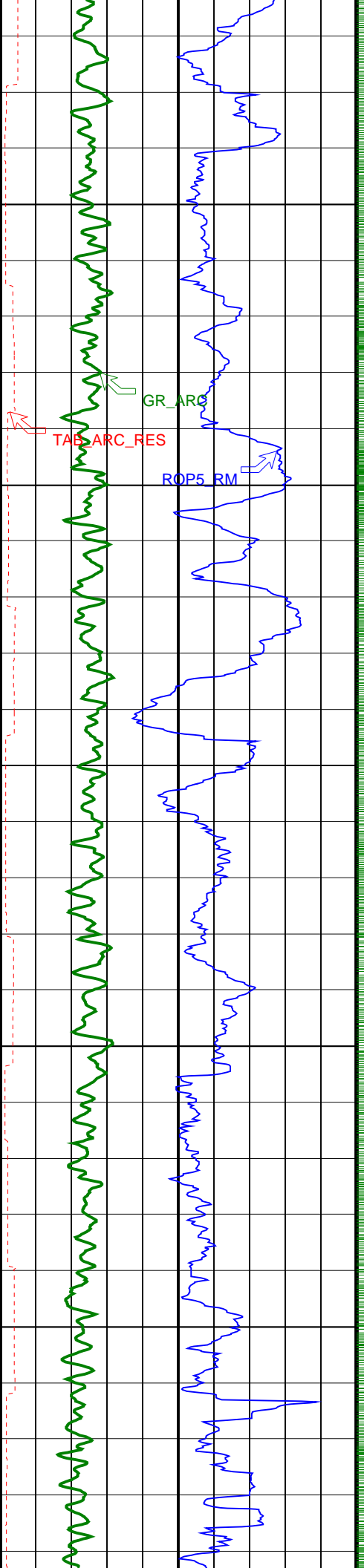
13 3/8" Casing Shoe @ 1735.90mMD

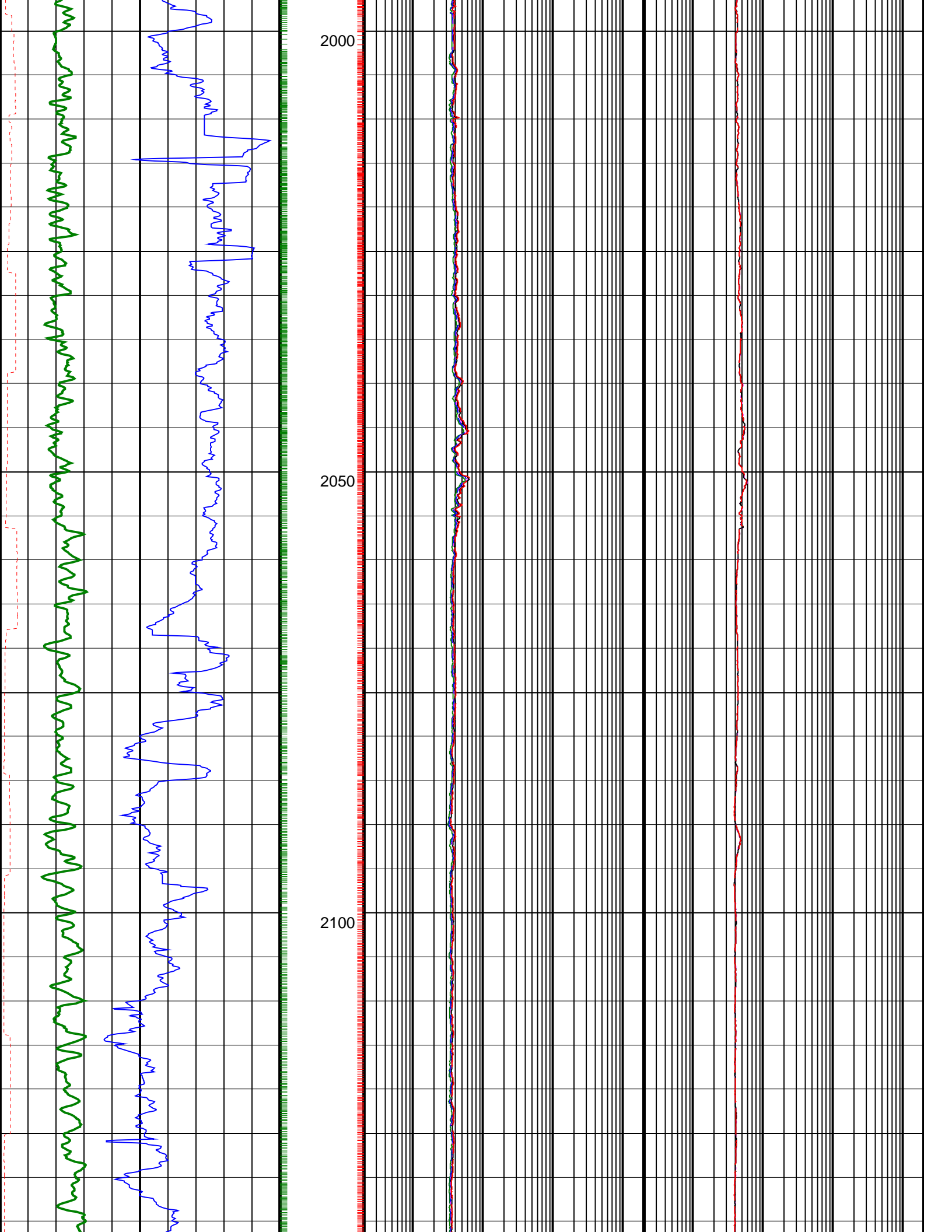
BHI Depth referencing used from 1737-3248mMD

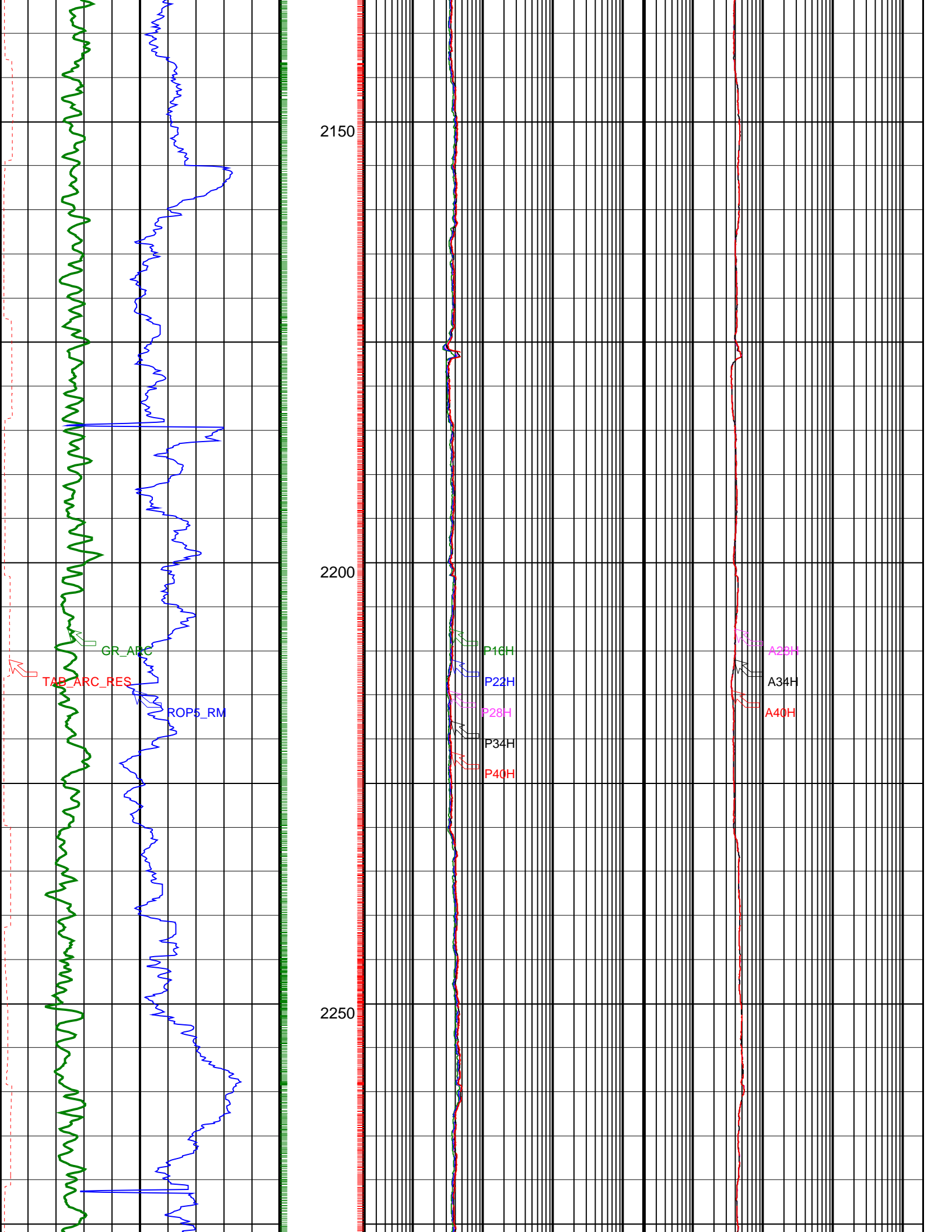
1750

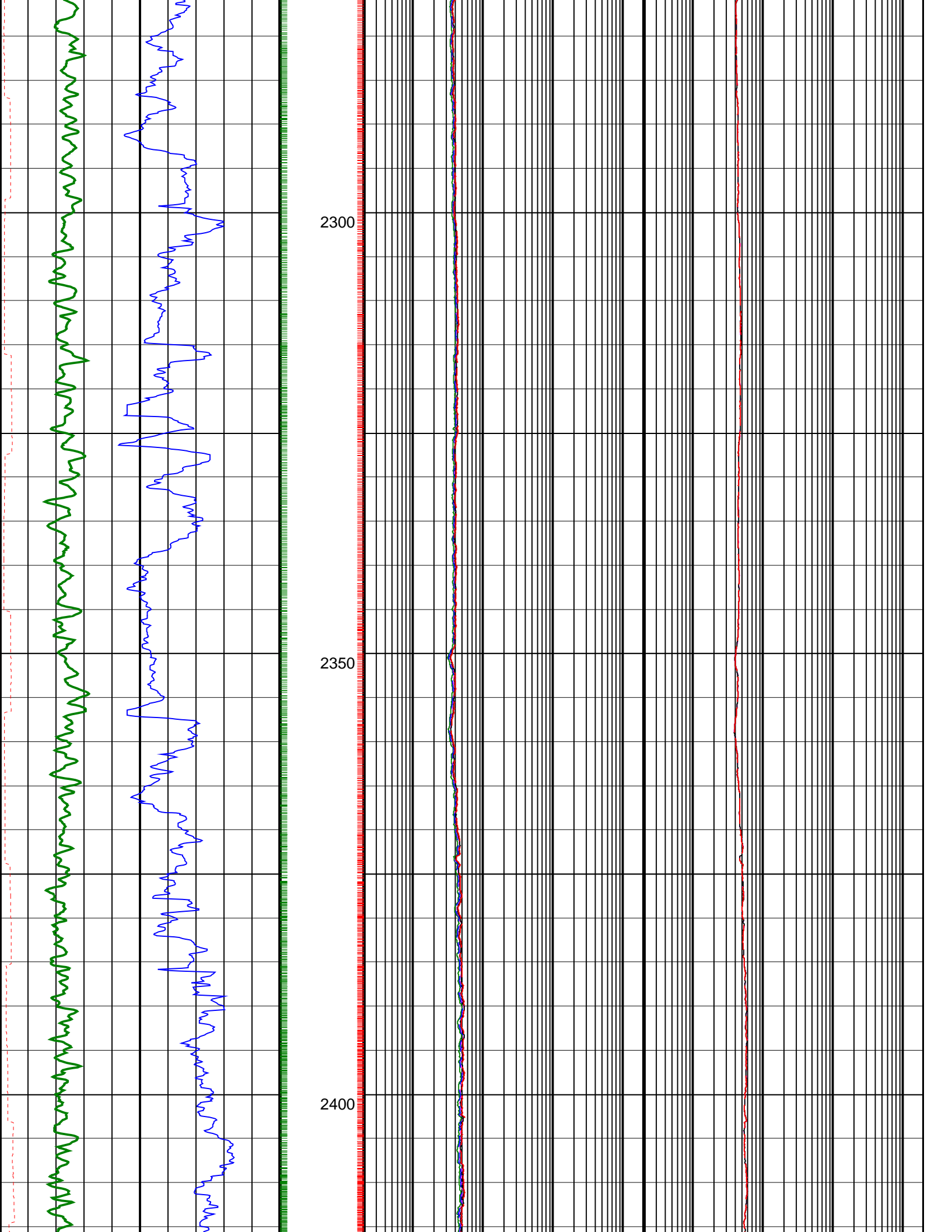
1800

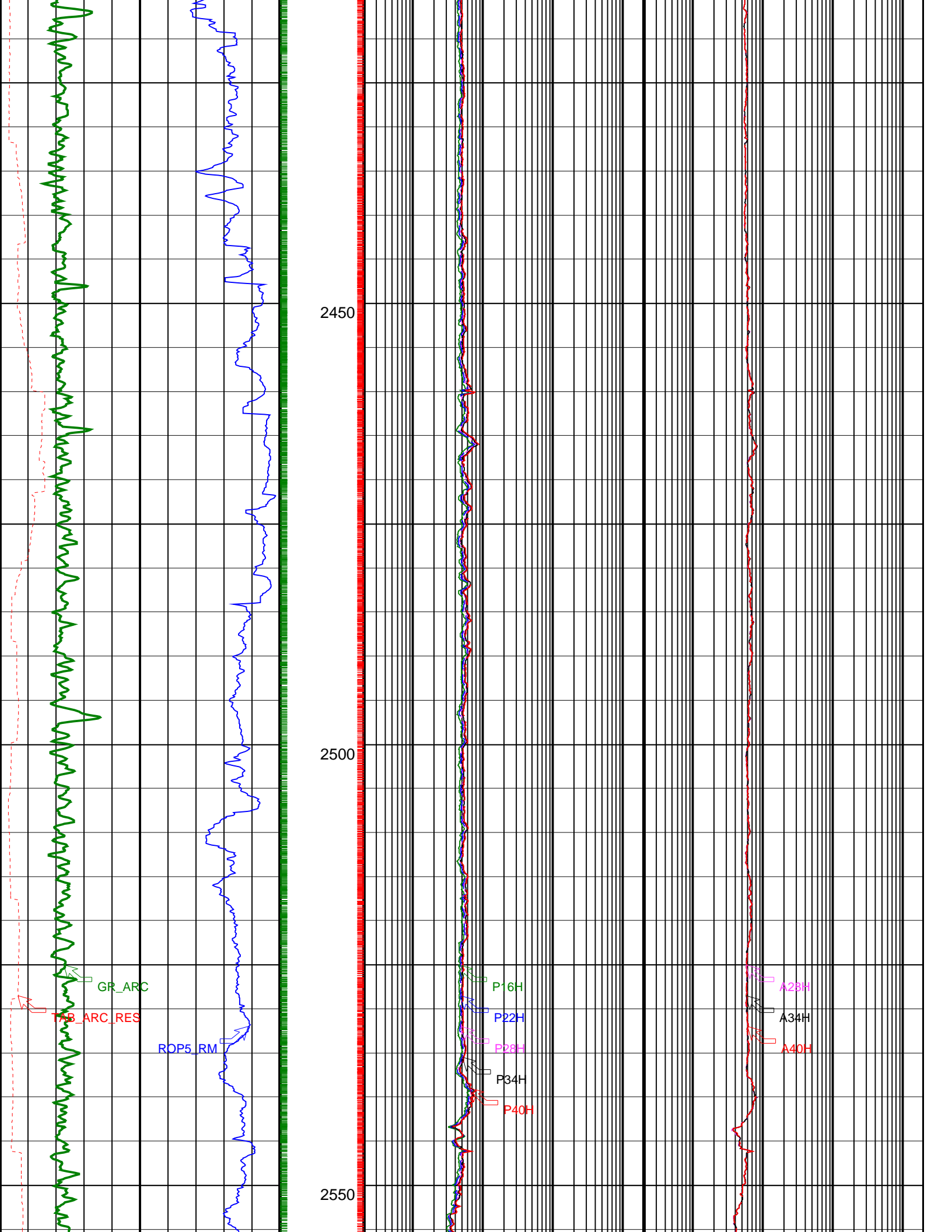
1850

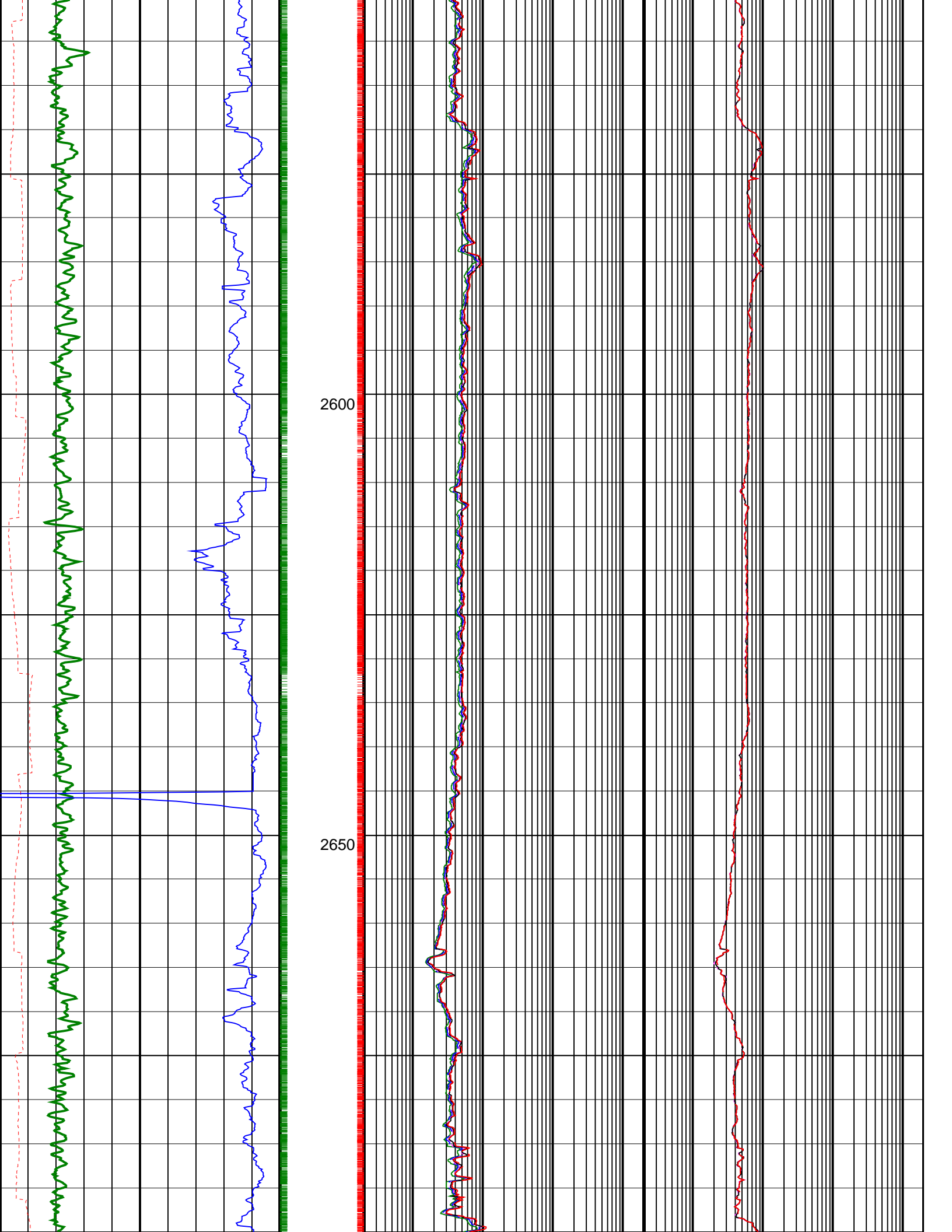




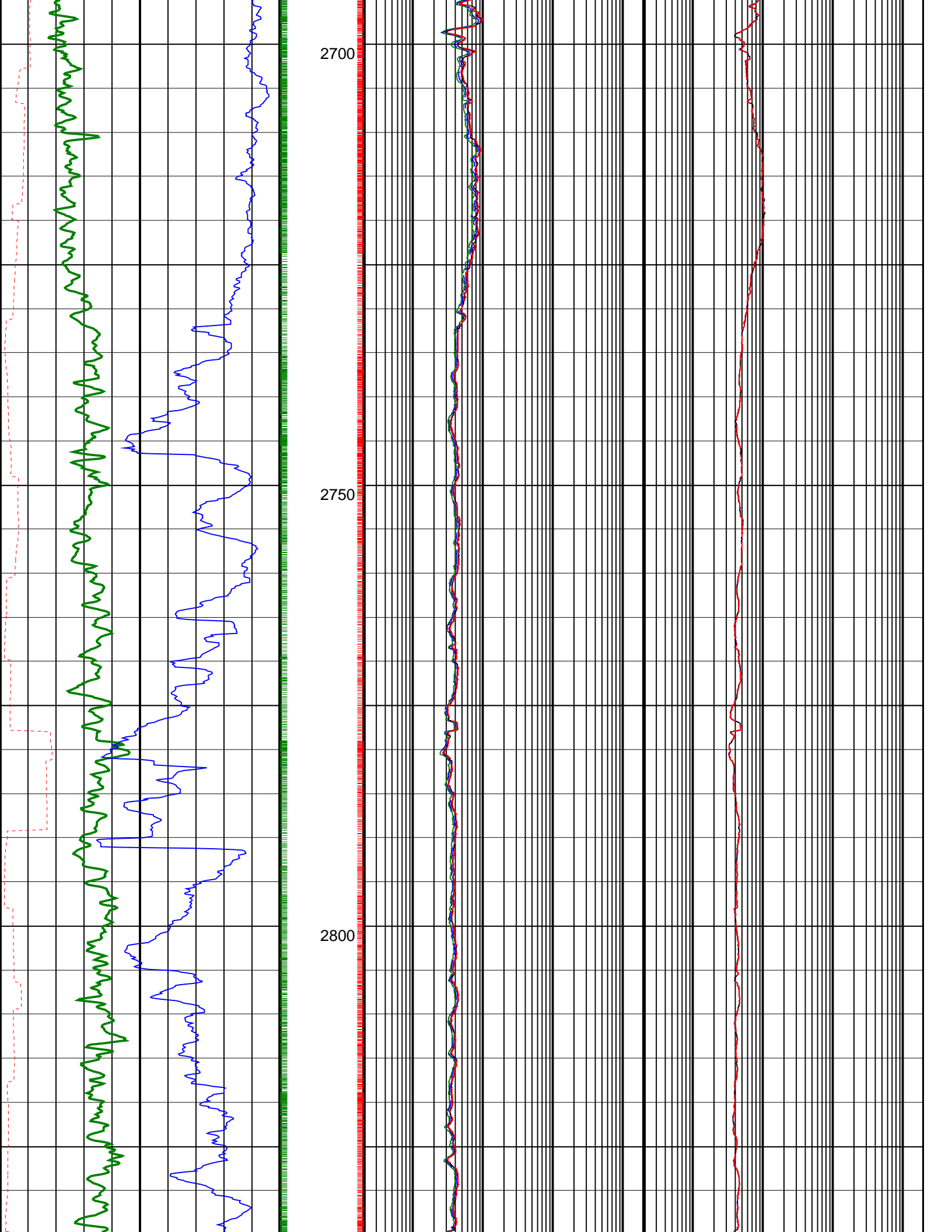


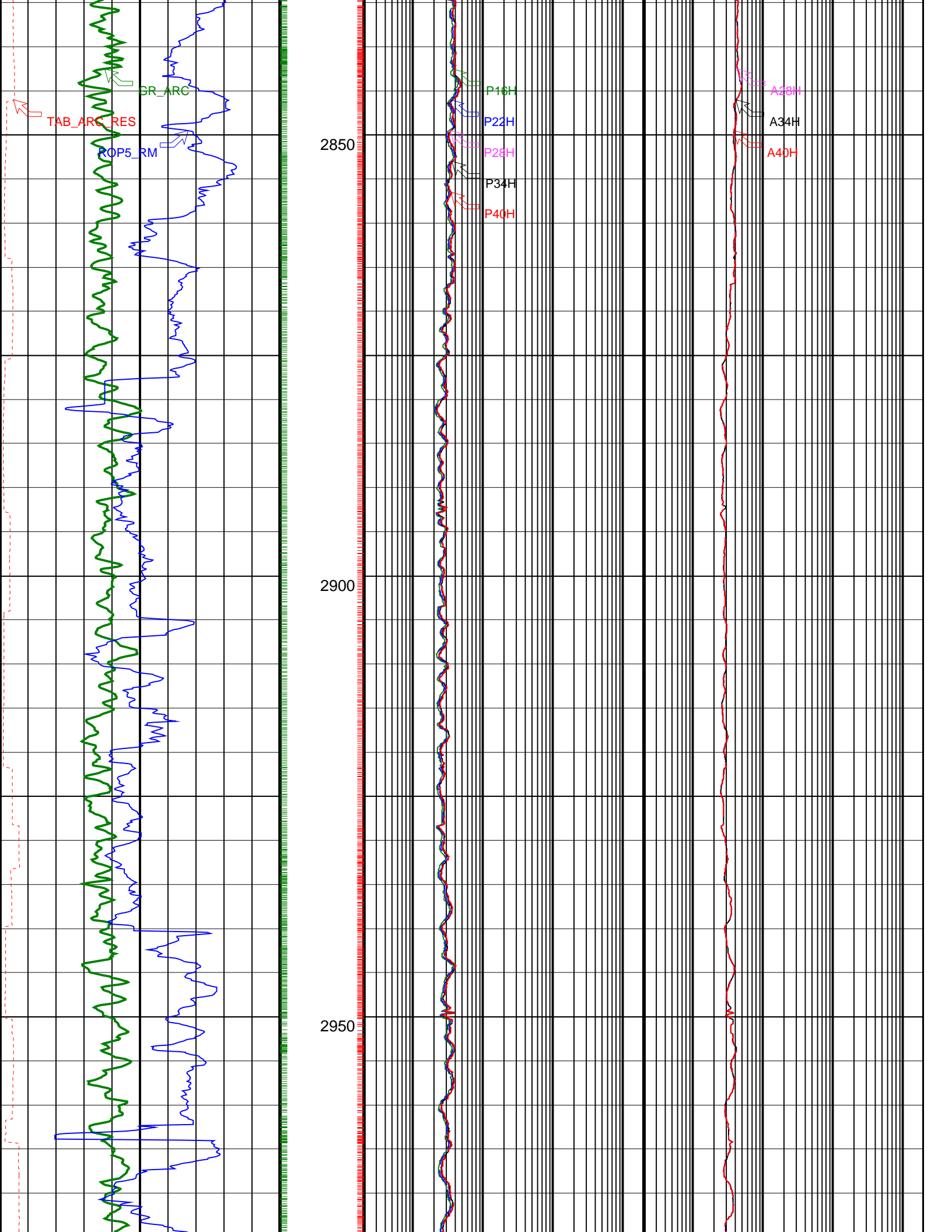


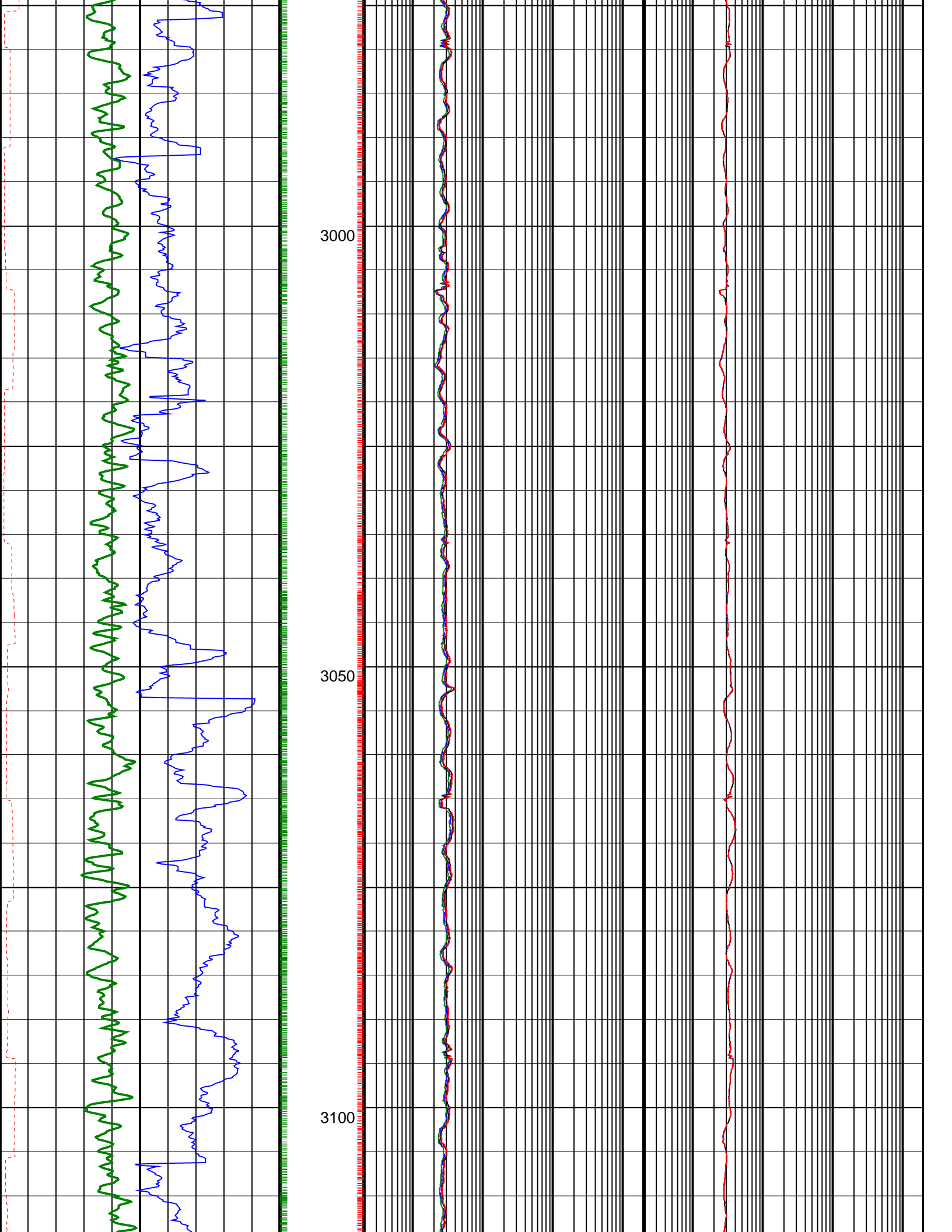


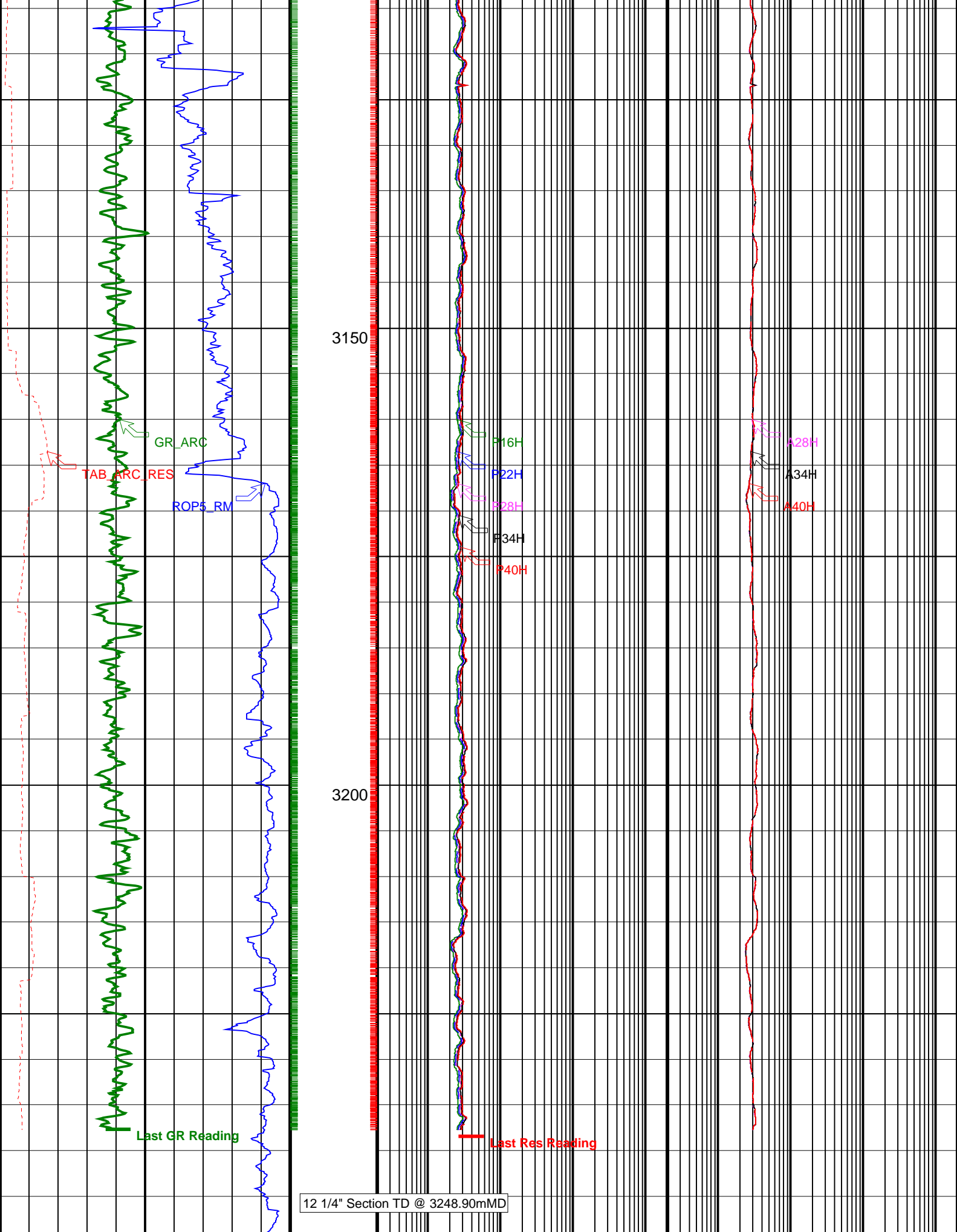












3150

3200

GR\_ARC

TAB\_ARC\_RES

ROP%\_RM

Last GR Reading

P16H

P22H

P28H

P34H

P40H

Last Res Reading

A28H

A34H

A40H

12 1/4" Section TD @ 3248.90mMD

ARC Gamma Ray (GR\_ARC)

(GAPI)

200

ARC Phase-Shift Resistivity 16-in. at 2 MHz (P16H)

ARC Attenuation Resistivity 28-in. at 2 MHz (A28H)

200

(OHMM) 200	0.2 (OHMM) 2000	(OHMM) 2000
ARC Resistivity Time After Bit (TAB_ ARC_RES) 0 (HR) 10	ARC Phase-Shift Resistivity 22-in. at 2 MHz (P22H) 0.2 (OHMM) 2000	ARC Attenuation Resistivity 34-in. at 2 MHz (A34H) 0.2 (OHMM) 2000
Rate of Penetration, Averaged over Last 5ft (ROP5_RM) 200 (M/HR) 0	ARC Phase-Shift Resistivity 28-in. at 2 MHz (P28H) 0.2 (OHMM) 2000	ARC Attenuation Resistivity 40-in. at 2 MHz (A40H) 0.2 (OHMM) 2000
	ARC Phase-Shift Resistivity 34-in. at 2 MHz (P34H) 0.2 (OHMM) 2000	
	ARC Phase-Shift Resistivity 40-in. at 2 MHz (P40H) 0.2 (OHMM) 2000	

**PIP SUMMARY**

- + ARC Gamma Ray Samples
- ARC Resistivity Samples

**IDEAL Version: ID13\_0C\_08**  
IDF

ARC9A-AA      id13\_0c\_02