

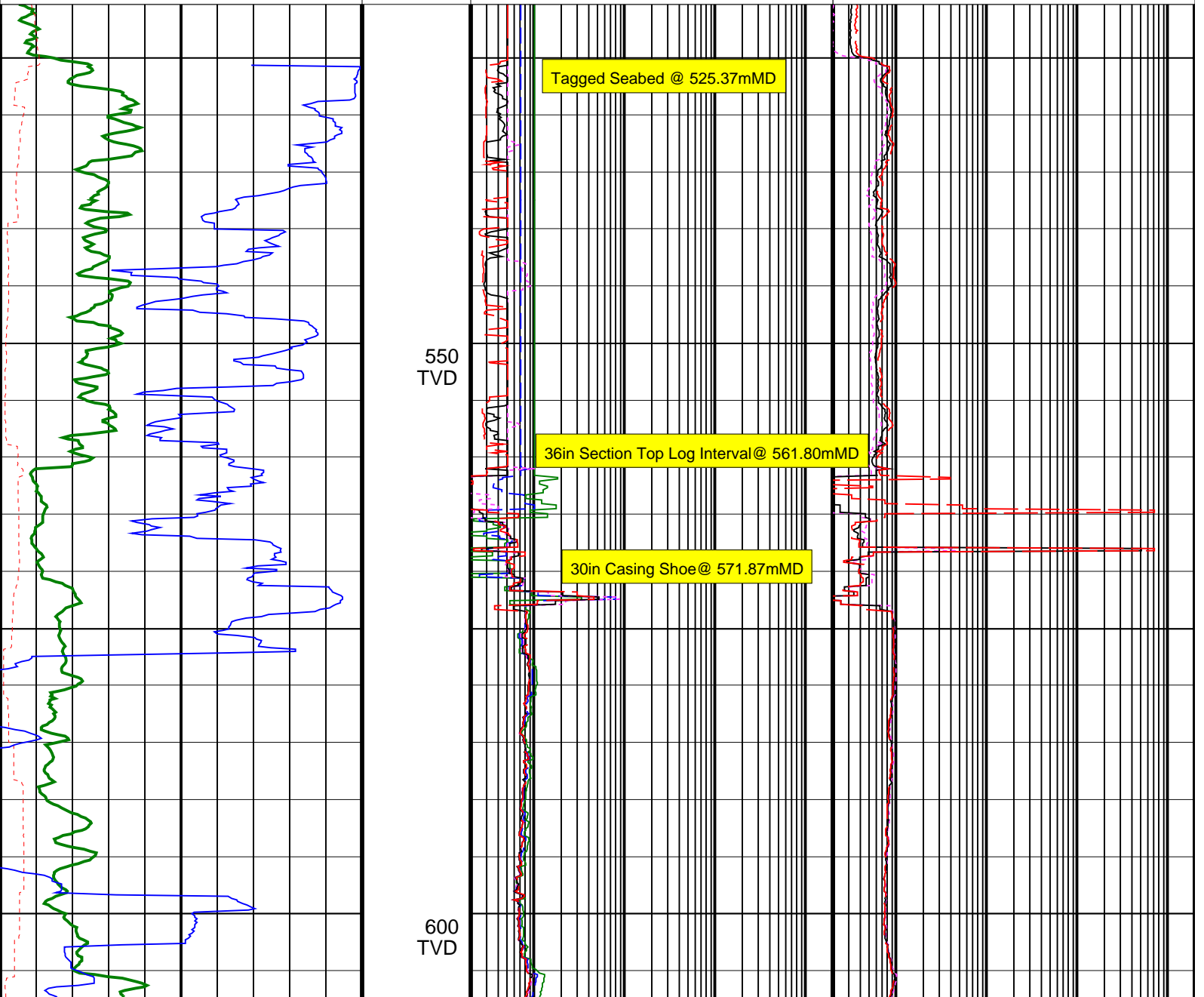
Elver-1_VISION Resistivity RM 500TVD

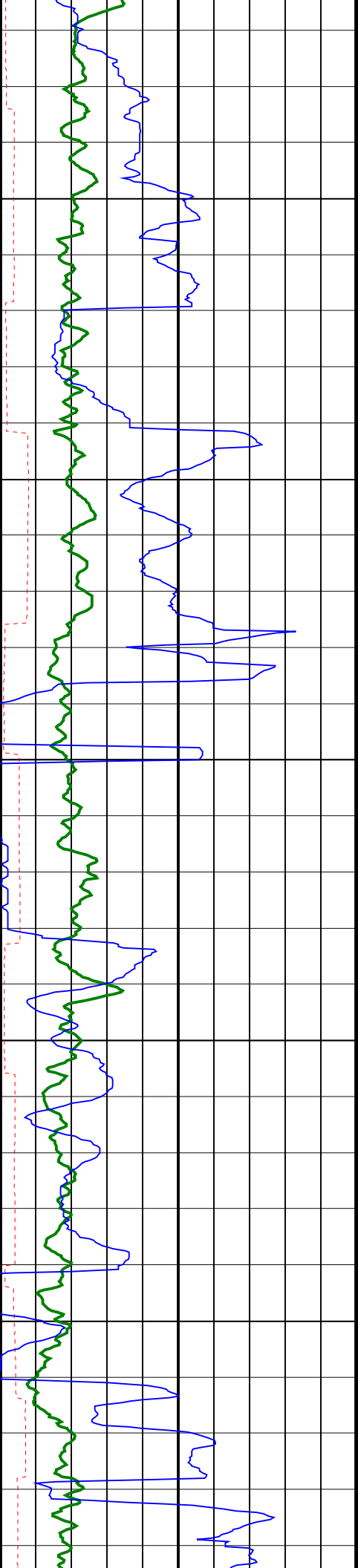
Format: ARC_500TVD

Vertical Scale: 1:500

Graphics File Created: 23-Dec-2008 19:01

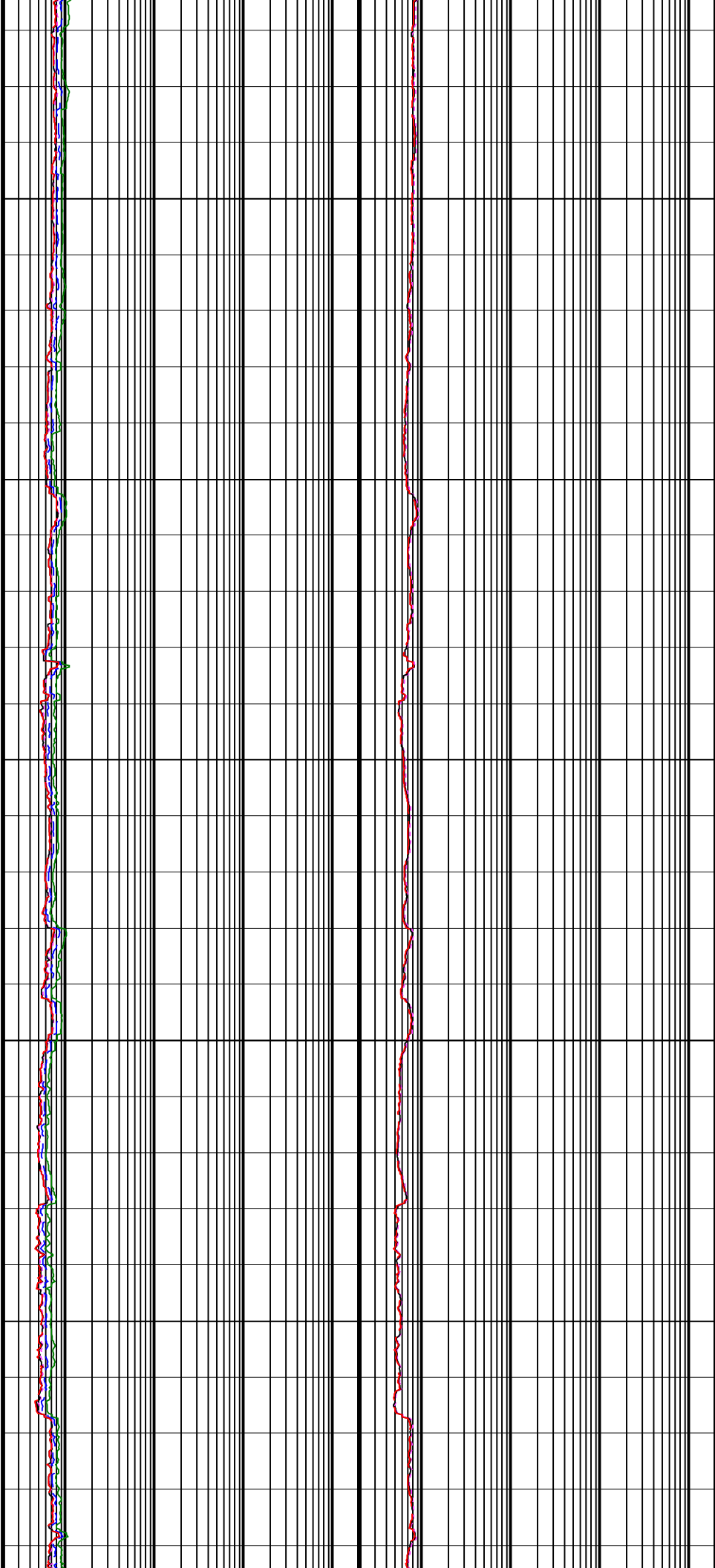
	ARC Phase-Shift Resistivity 40-in. at 2 MHz (P40H) 0.2 (OHMM) 2000	
	ARC Phase-Shift Resistivity 34-in. at 2 MHz (P34H) 0.2 (OHMM) 2000	
Rate of Penetration, Averaged over Last 5ft (ROP5_RM) 200 (M/HR) 0	ARC Phase-Shift Resistivity 28-in. at 2 MHz (P28H) 0.2 (OHMM) 2000	ARC Attenuation Resistivity 40-in. at 2 MHz (A40H) 0.2 (OHMM) 2000
ARC Resistivity Time After Bit (TAB_ARC_RES) 0 (HR) 10	ARC Phase-Shift Resistivity 22-in. at 2 MHz (P22H) 0.2 (OHMM) 2000	ARC Attenuation Resistivity 34-in. at 2 MHz (A34H) 0.2 (OHMM) 2000
ARC Gamma Ray (GR_ARC) 0 (GAPI) 200	ARC Phase-Shift Resistivity 16-in. at 2 MHz (P16H) 0.2 (OHMM) 2000	ARC Attenuation Resistivity 28-in. at 2 MHz (A28H) 0.2 (OHMM) 2000

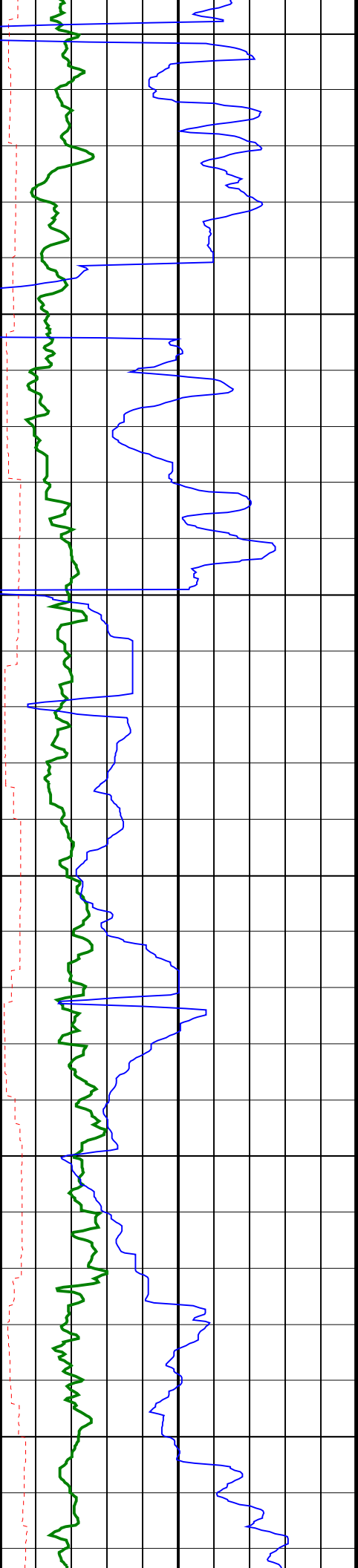




650
TVD

700
TVD

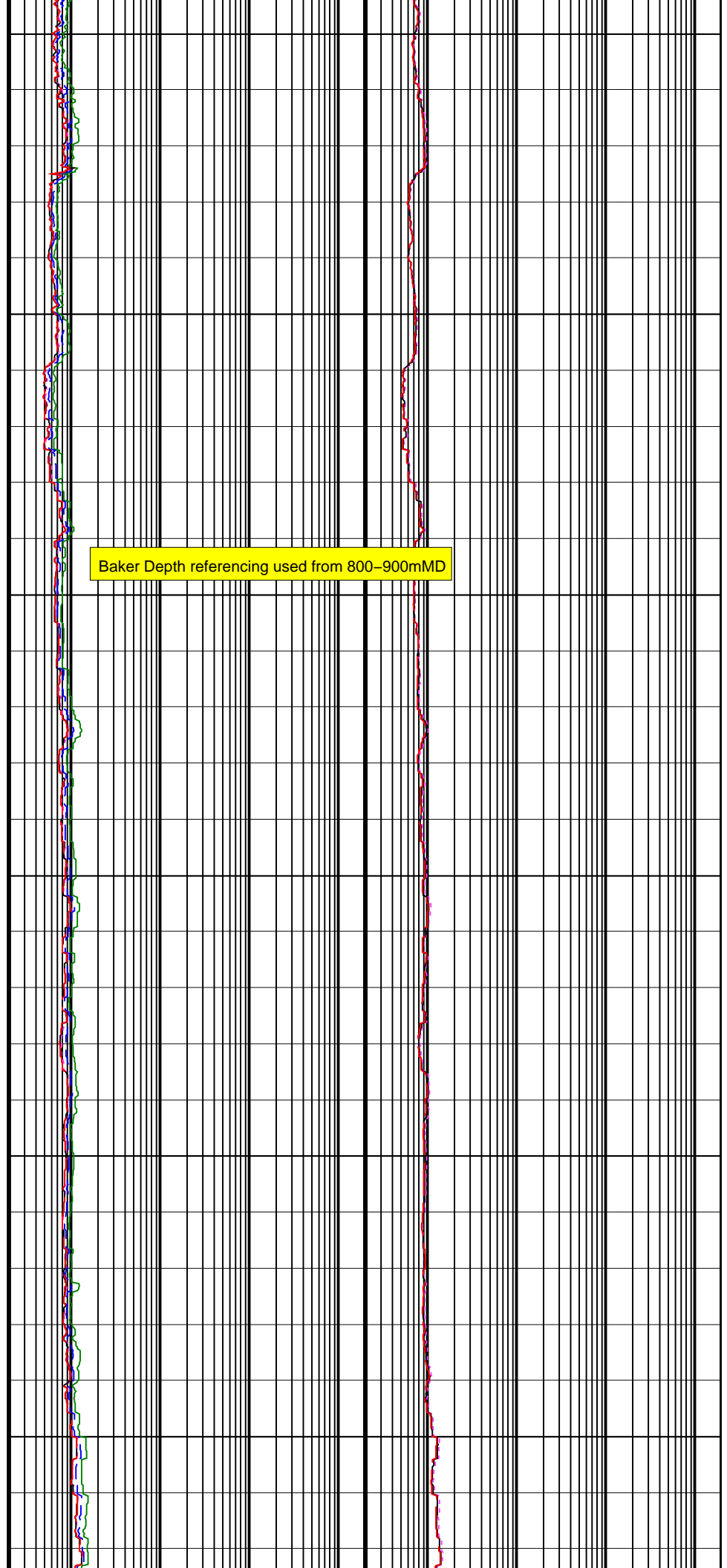




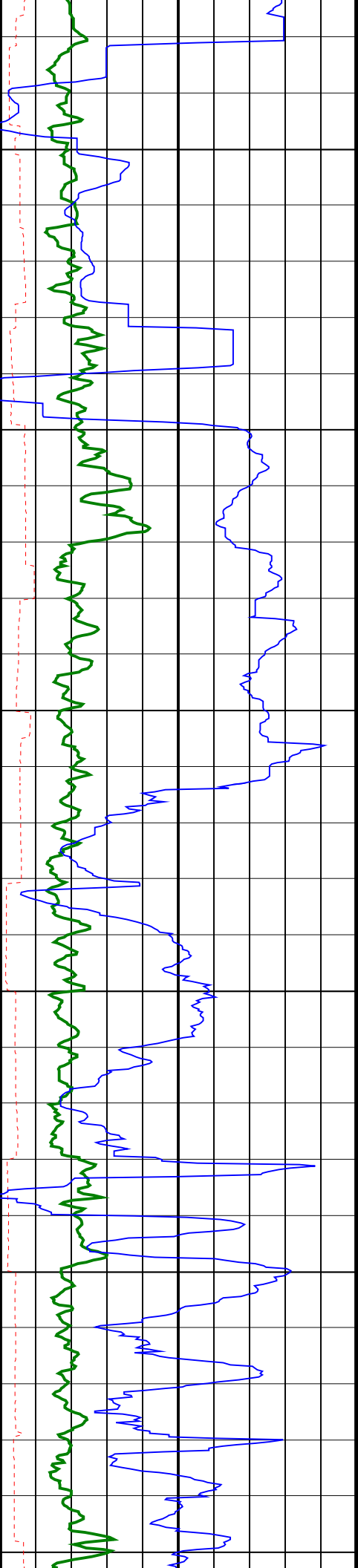
750
TVD

800
TVD

850
TVD



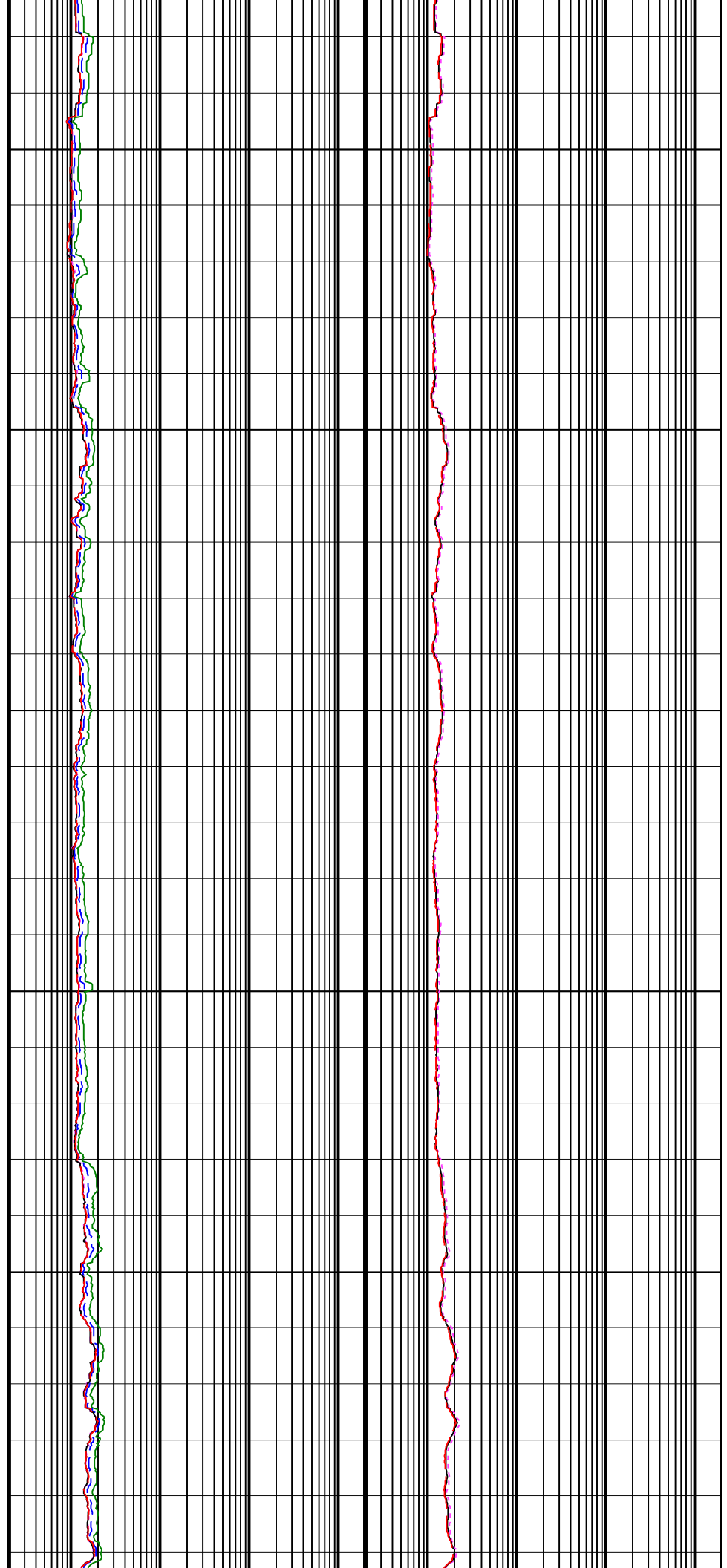
Baker Depth referencing used from 800-900mMD

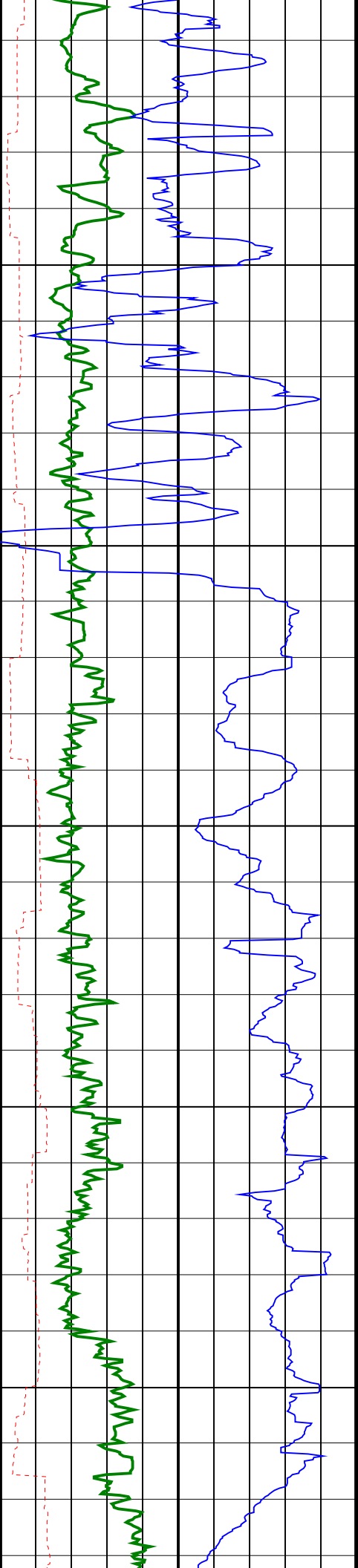


900
TVD

950
TVD

1000
TVD





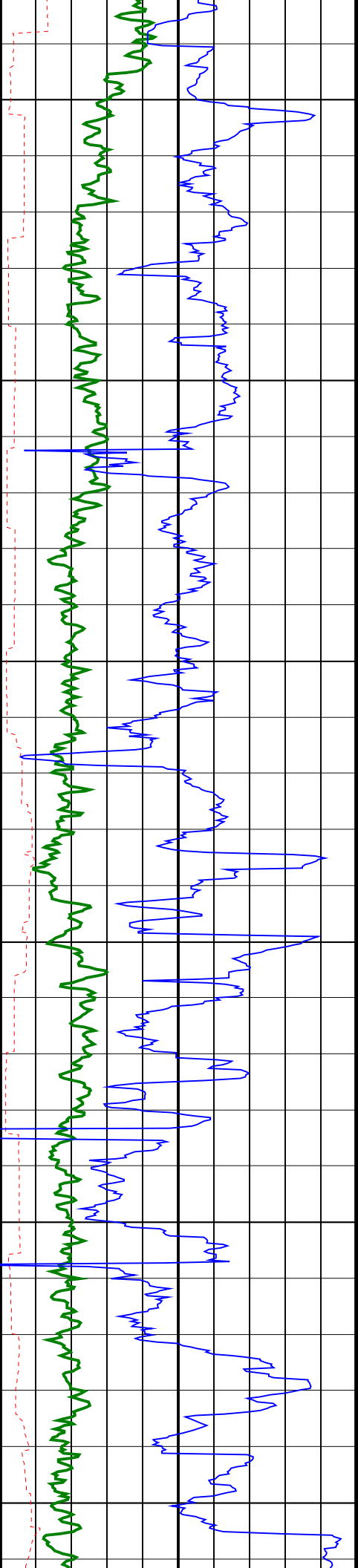
1050
TVD

1100
TVD

1150
TVD



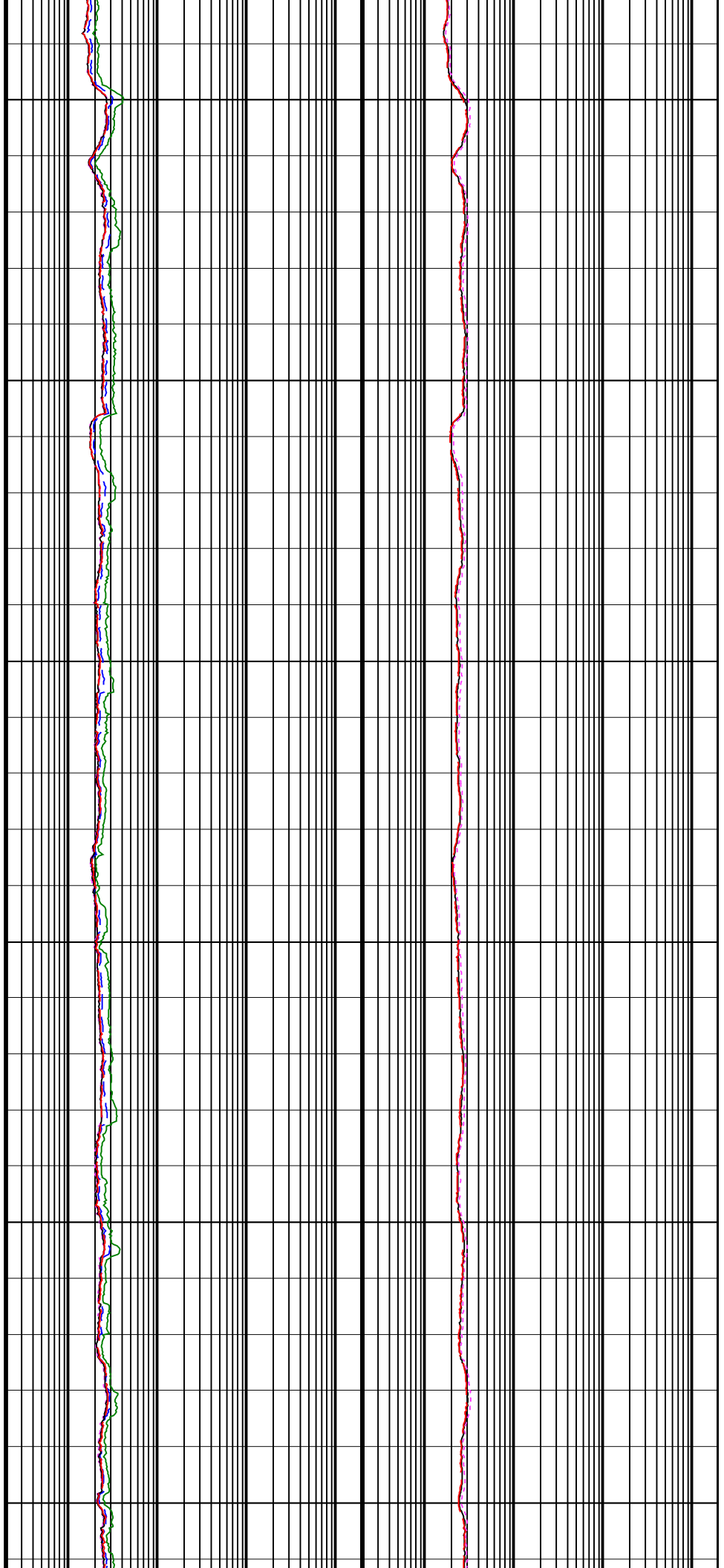
Baker Depth referencing used from 1110-1250mMD

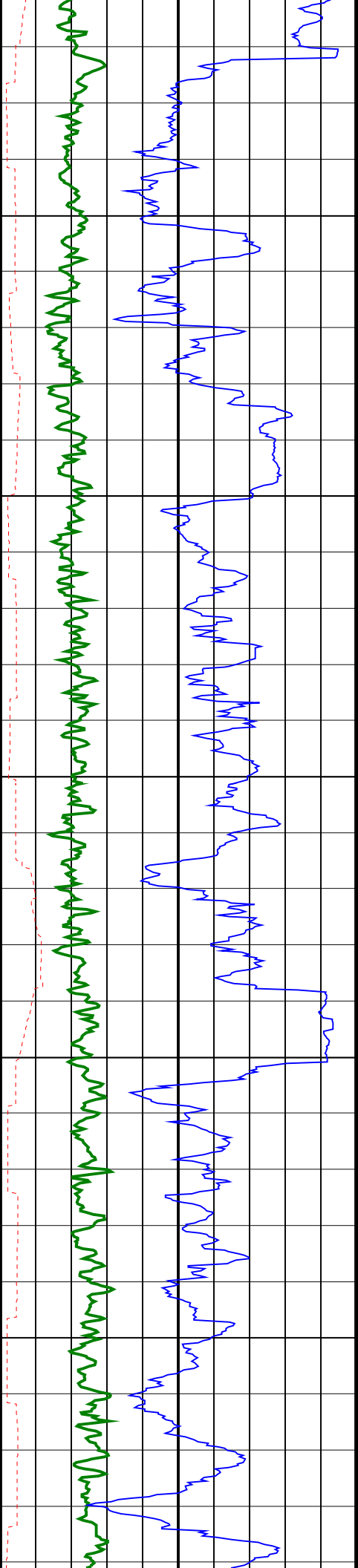


1200
TVD

1250
TVD

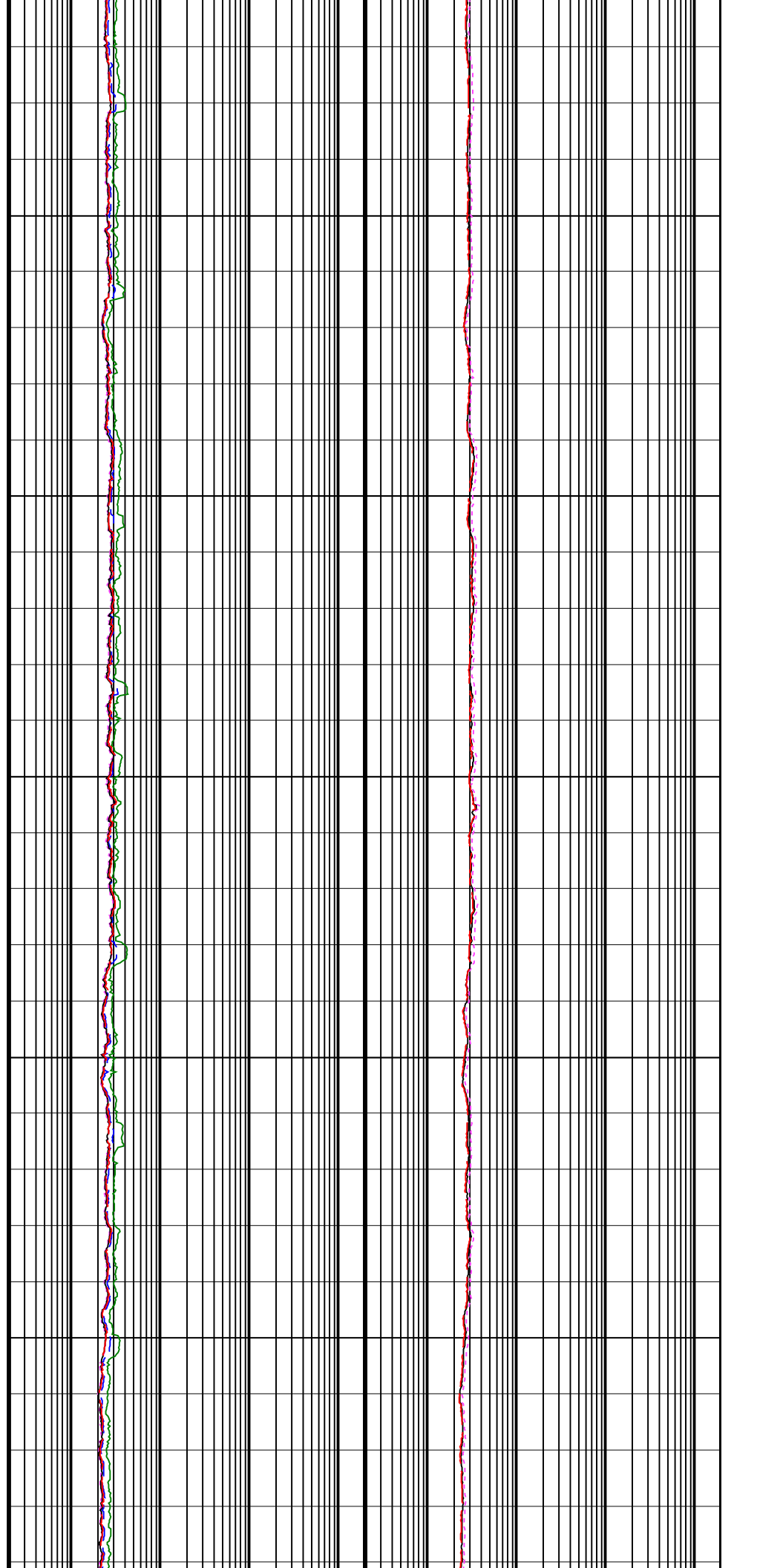
1300
TVD

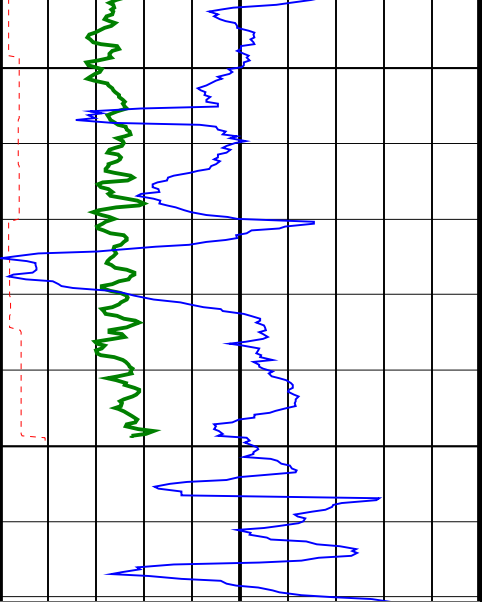




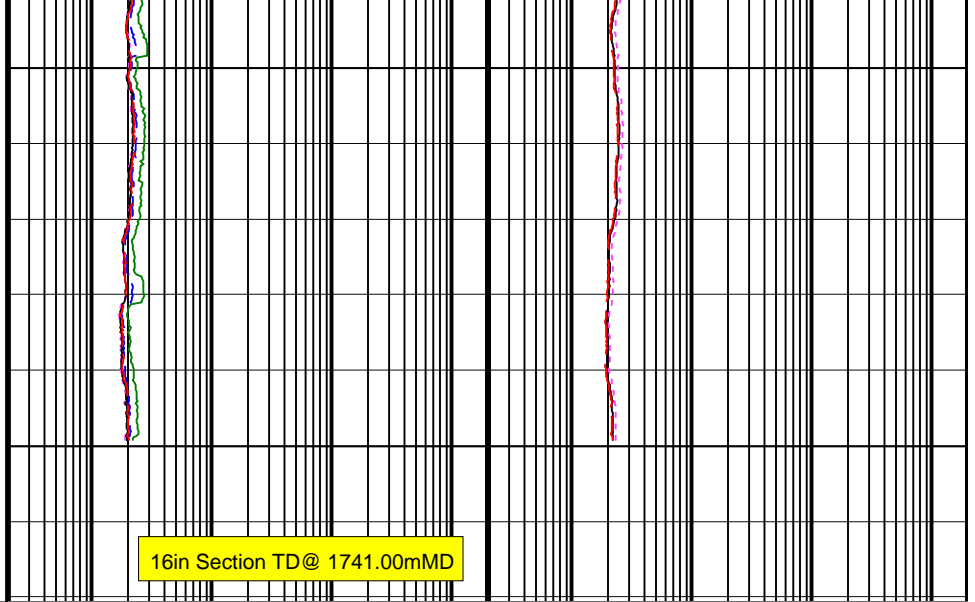
1350
TVD

1400
TVD





1450
TVD



16in Section TD@ 1741.00mMD

ARC Gamma Ray (GR_ARC)		
0	(GAPI)	200
ARC Resistivity Time After Bit (TAB_ARC_RES)		
0	(HR)	10
Rate of Penetration, Averaged over Last 5ft (ROP5_RM)		
200	(M/HR)	0

ARC Phase-Shift Resistivity 16-in. at 2 MHz (P16H)	ARC Attenuation Resistivity 28-in. at 2 MHz (A28H)
0.2 (OHMM) 2000	0.2 (OHMM) 2000
ARC Phase-Shift Resistivity 22-in. at 2 MHz (P22H)	ARC Attenuation Resistivity 34-in. at 2 MHz (A34H)
0.2 (OHMM) 2000	0.2 (OHMM) 2000
ARC Phase-Shift Resistivity 28-in. at 2 MHz (P28H)	ARC Attenuation Resistivity 40-in. at 2 MHz (A40H)
0.2 (OHMM) 2000	0.2 (OHMM) 2000
ARC Phase-Shift Resistivity 34-in. at 2 MHz (P34H)	
0.2 (OHMM) 2000	
ARC Phase-Shift Resistivity 40-in. at 2 MHz (P40H)	
0.2 (OHMM) 2000	

IDEAL Version: ID13_0C_08
IDF