

Elver-1_VISION Resistivity RM 500MD

Format: ARC_500MD

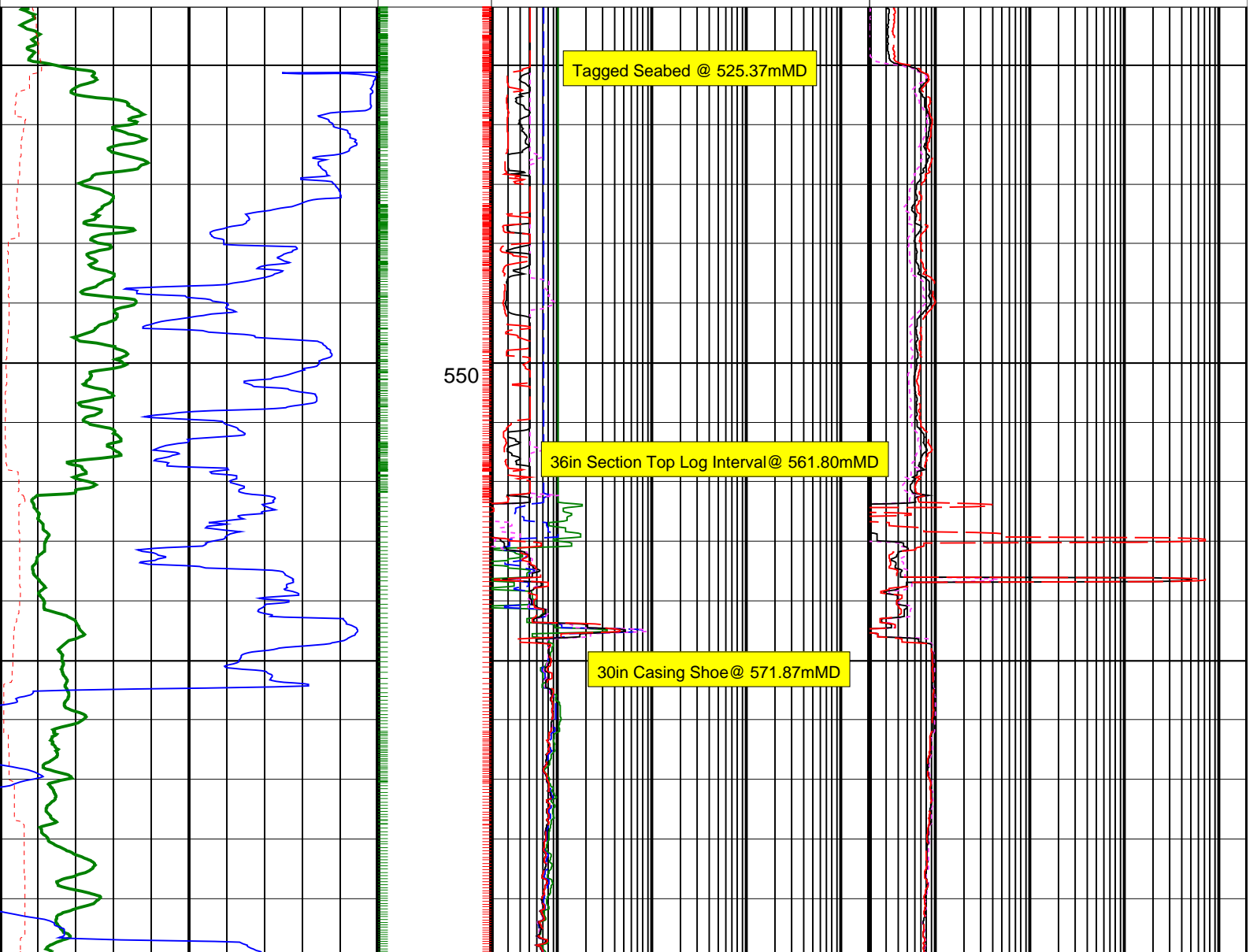
Vertical Scale: 1:500

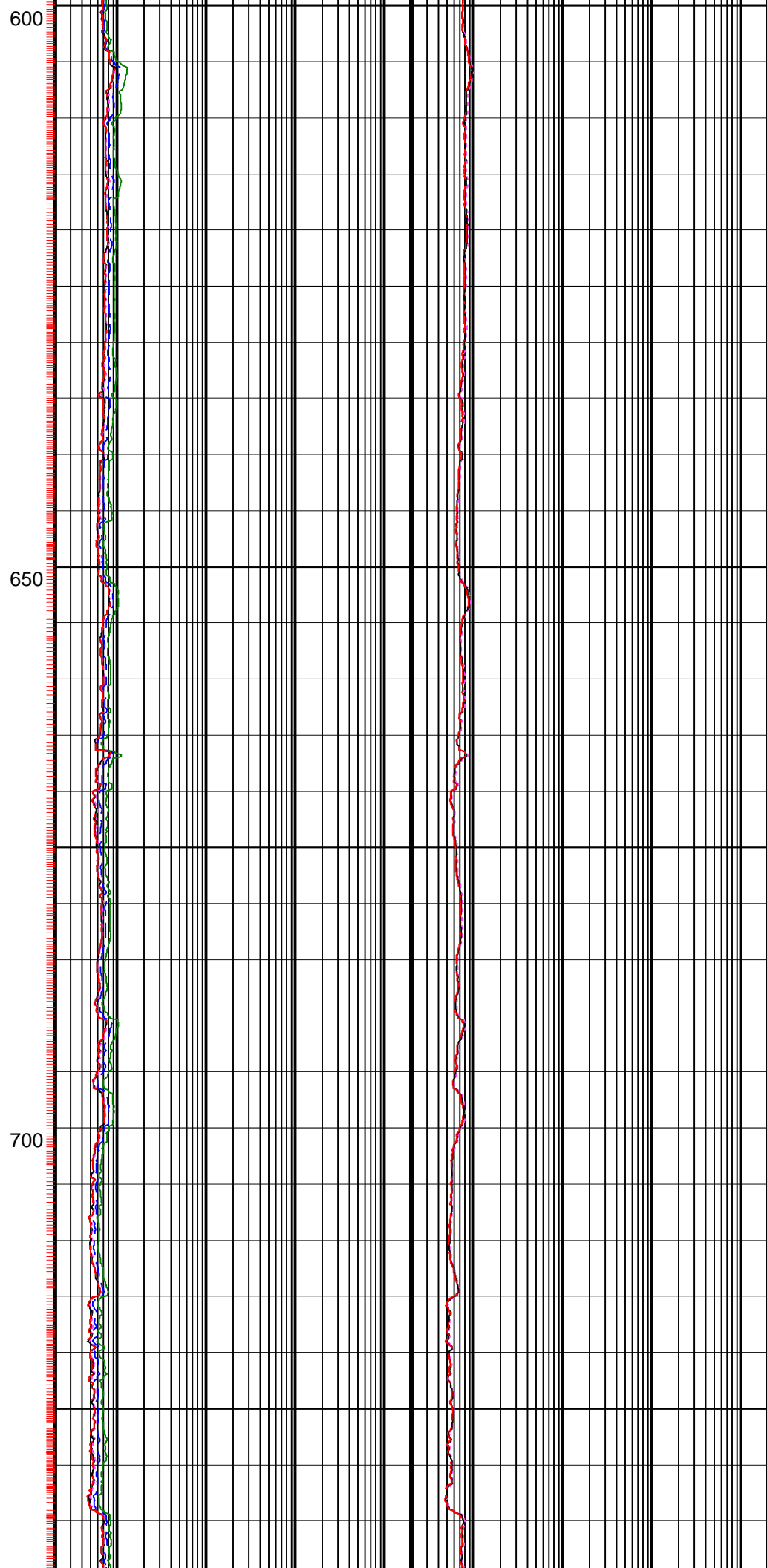
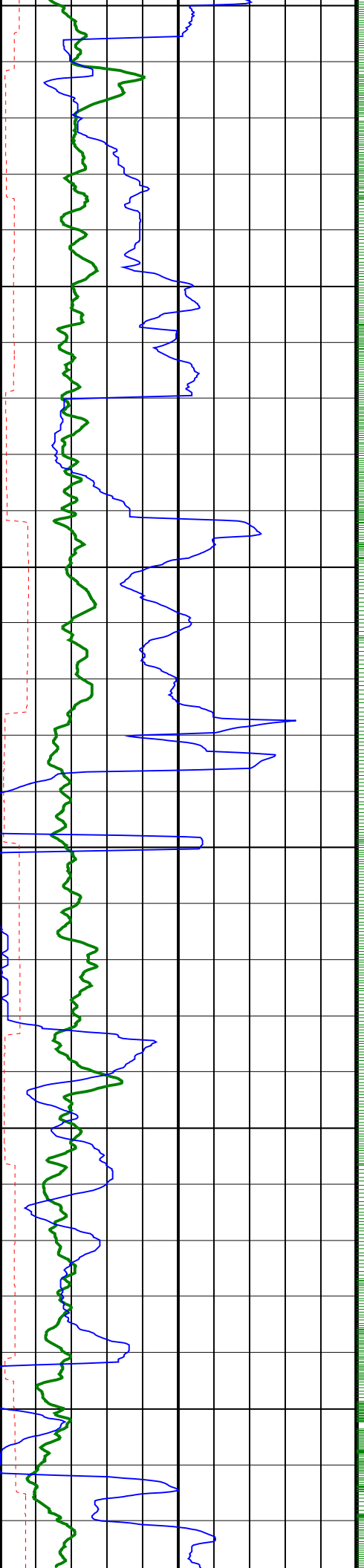
Graphics File Created: 23-Dec-2008 18:42

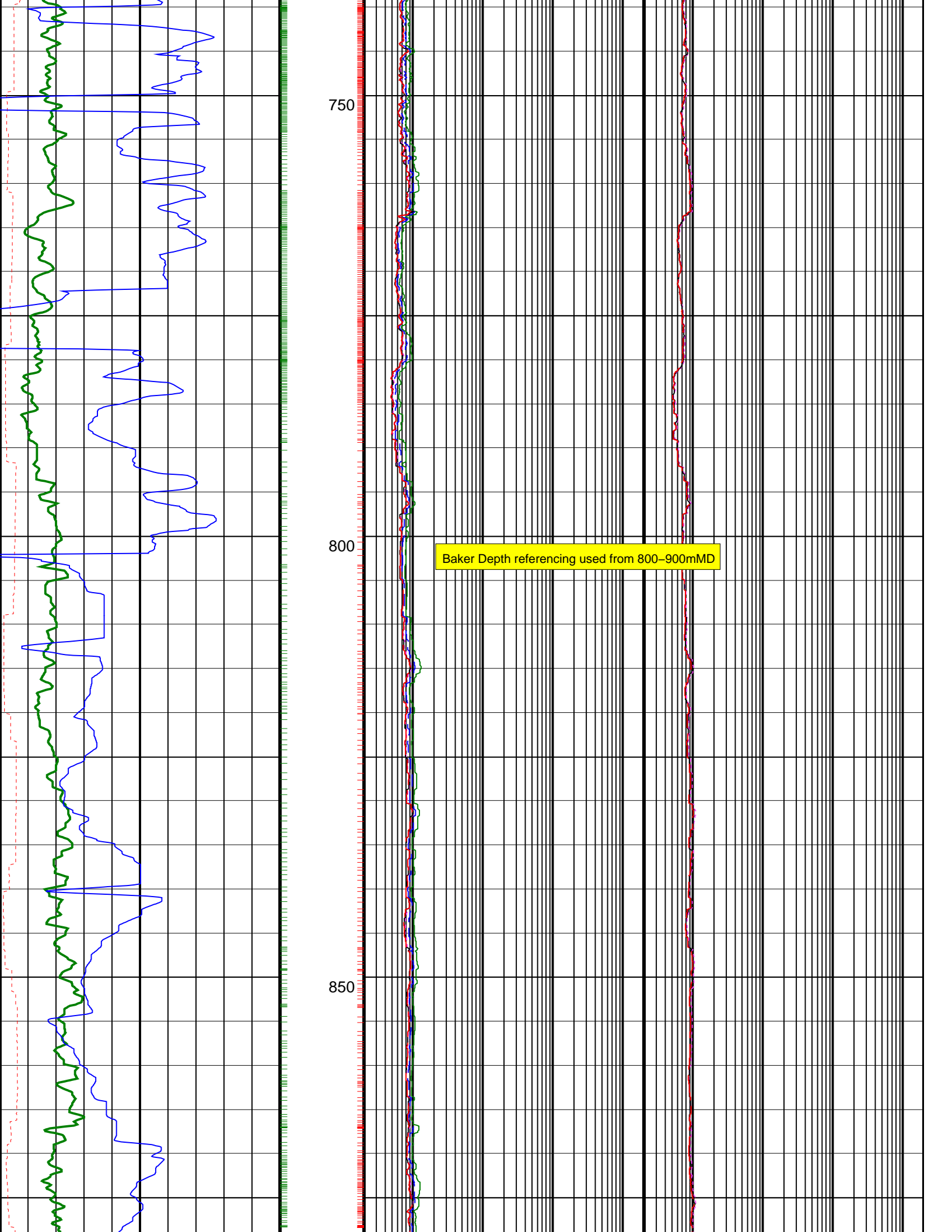
PIP SUMMARY

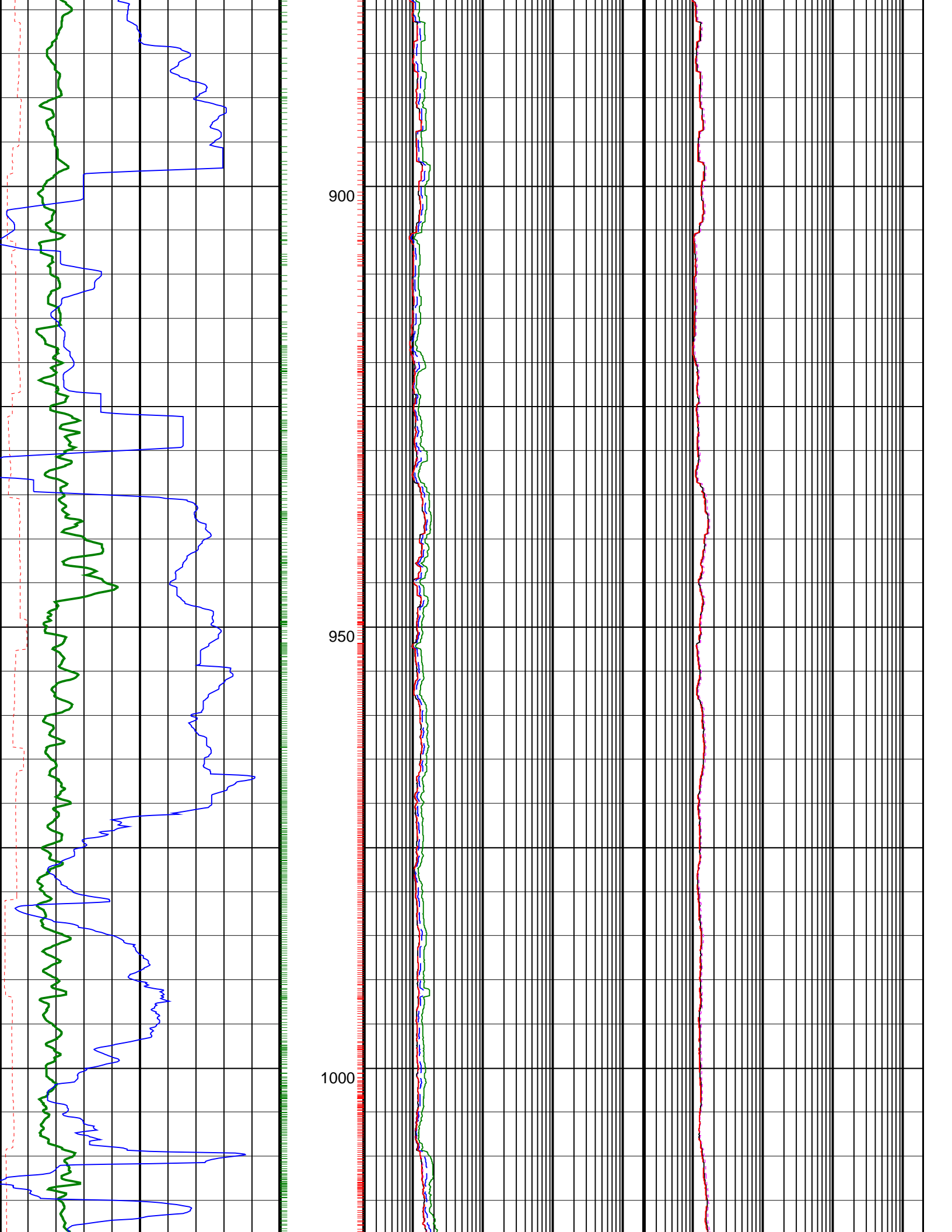
- ┆ ARC Gamma Ray Samples
- ┆ ARC Resistivity Samples

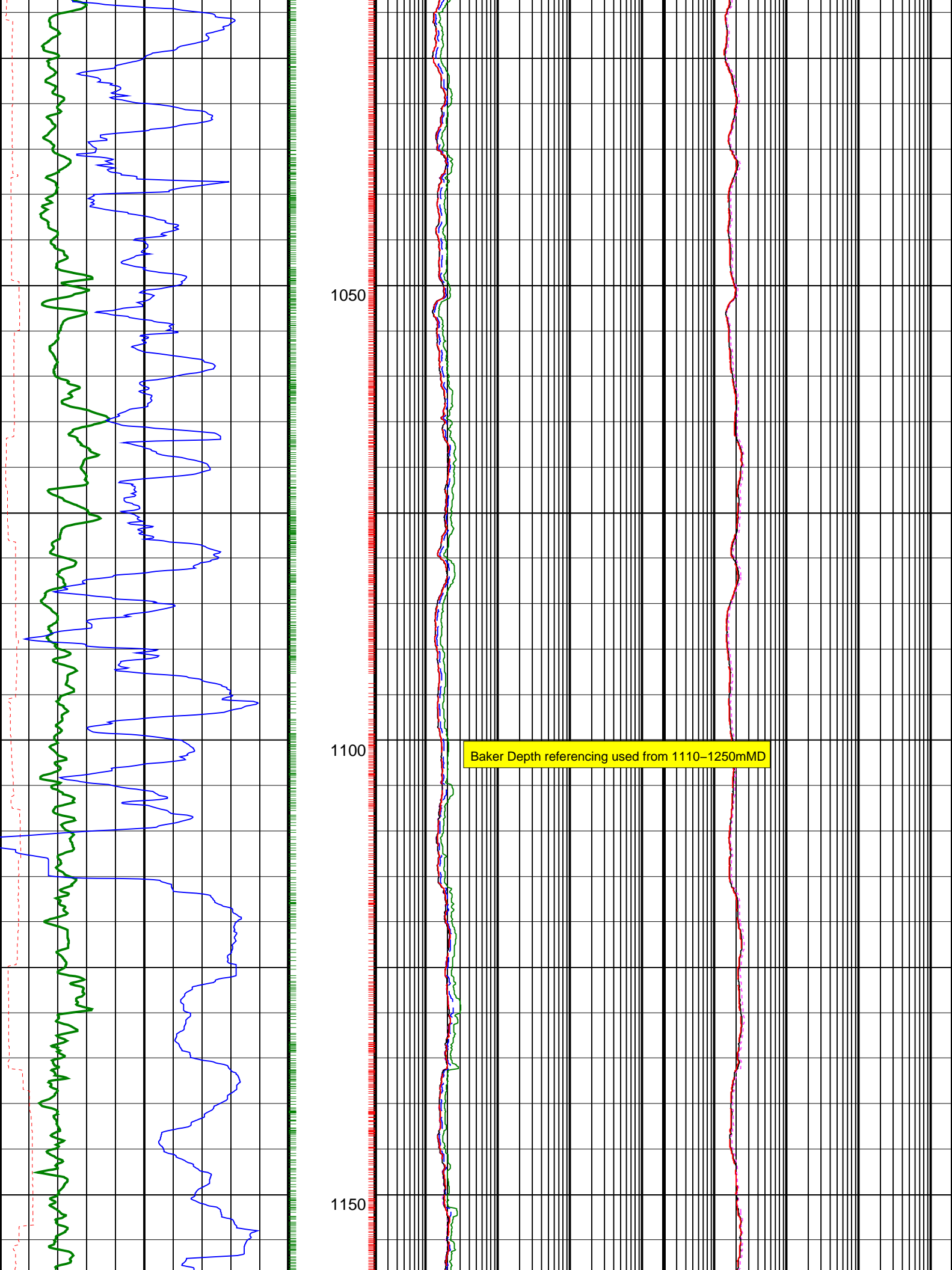
	ARC Phase-Shift Resistivity 40-in. at 2 MHz (P40H) 0.2 (OHMM) 2000	
	ARC Phase-Shift Resistivity 34-in. at 2 MHz (P34H) 0.2 (OHMM) 2000	
Rate of Penetration, Averaged over Last 5ft (ROP5_RM) 200 (M/HR) 0	ARC Phase-Shift Resistivity 28-in. at 2 MHz (P28H) 0.2 (OHMM) 2000	ARC Attenuation Resistivity 40-in. at 2 MHz (A40H) 0.2 (OHMM) 2000
ARC Resistivity Time After Bit (TAB_ARC_RES) 0 (HR) 10	ARC Phase-Shift Resistivity 22-in. at 2 MHz (P22H) 0.2 (OHMM) 2000	ARC Attenuation Resistivity 34-in. at 2 MHz (A34H) 0.2 (OHMM) 2000
ARC Gamma Ray (GR_ARC) 0 (GAPI) 200	ARC Phase-Shift Resistivity 16-in. at 2 MHz (P16H) 0.2 (OHMM) 2000	ARC Attenuation Resistivity 28-in. at 2 MHz (A28H) 0.2 (OHMM) 2000

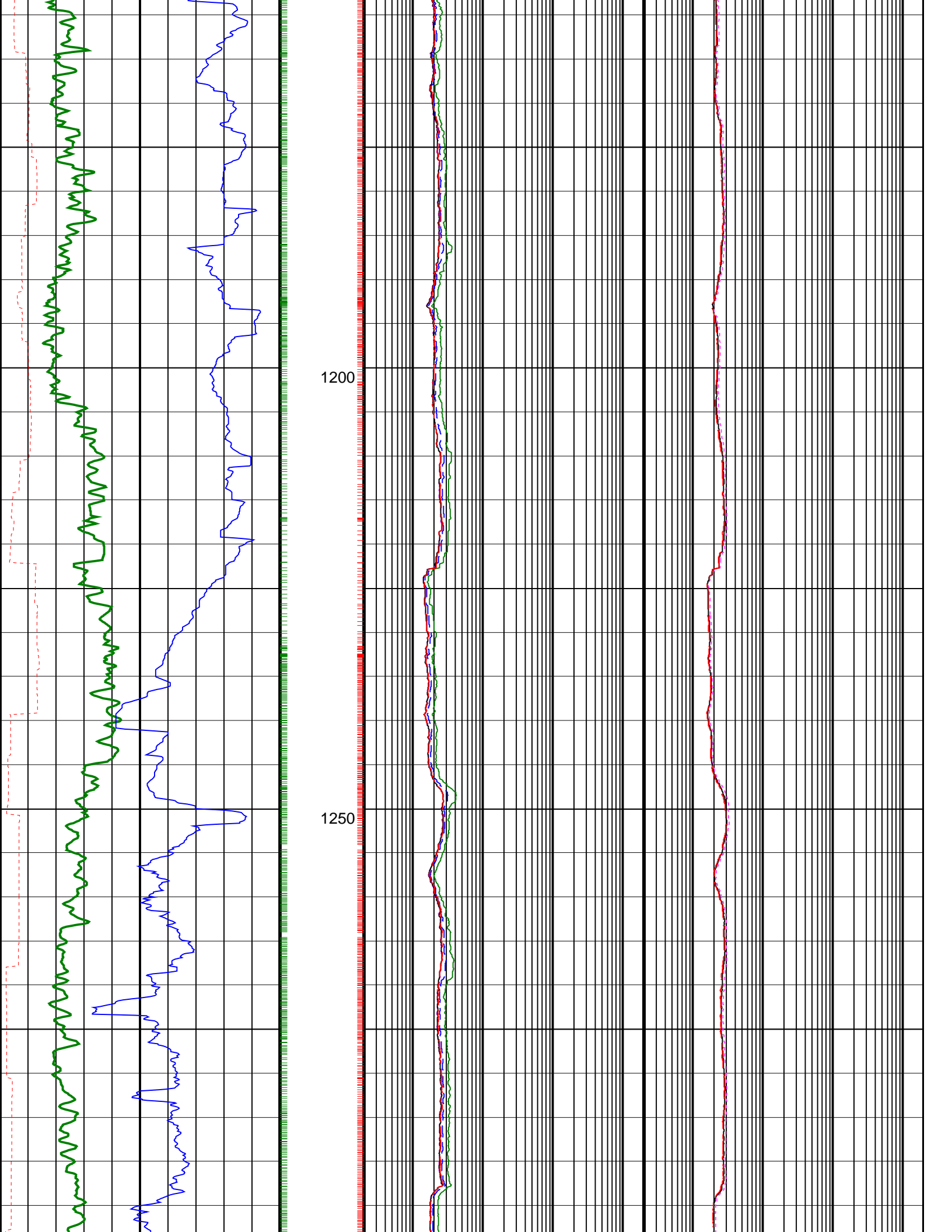


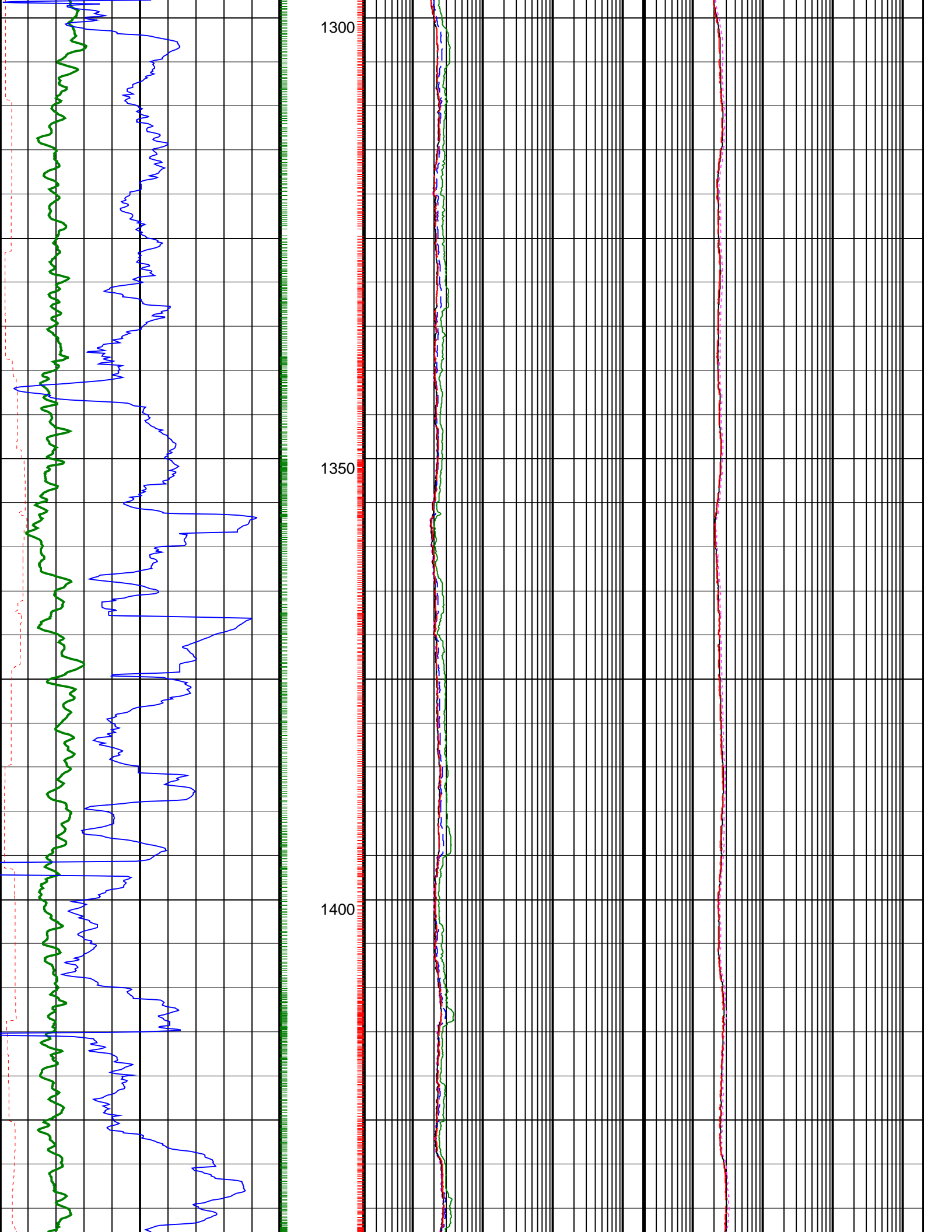


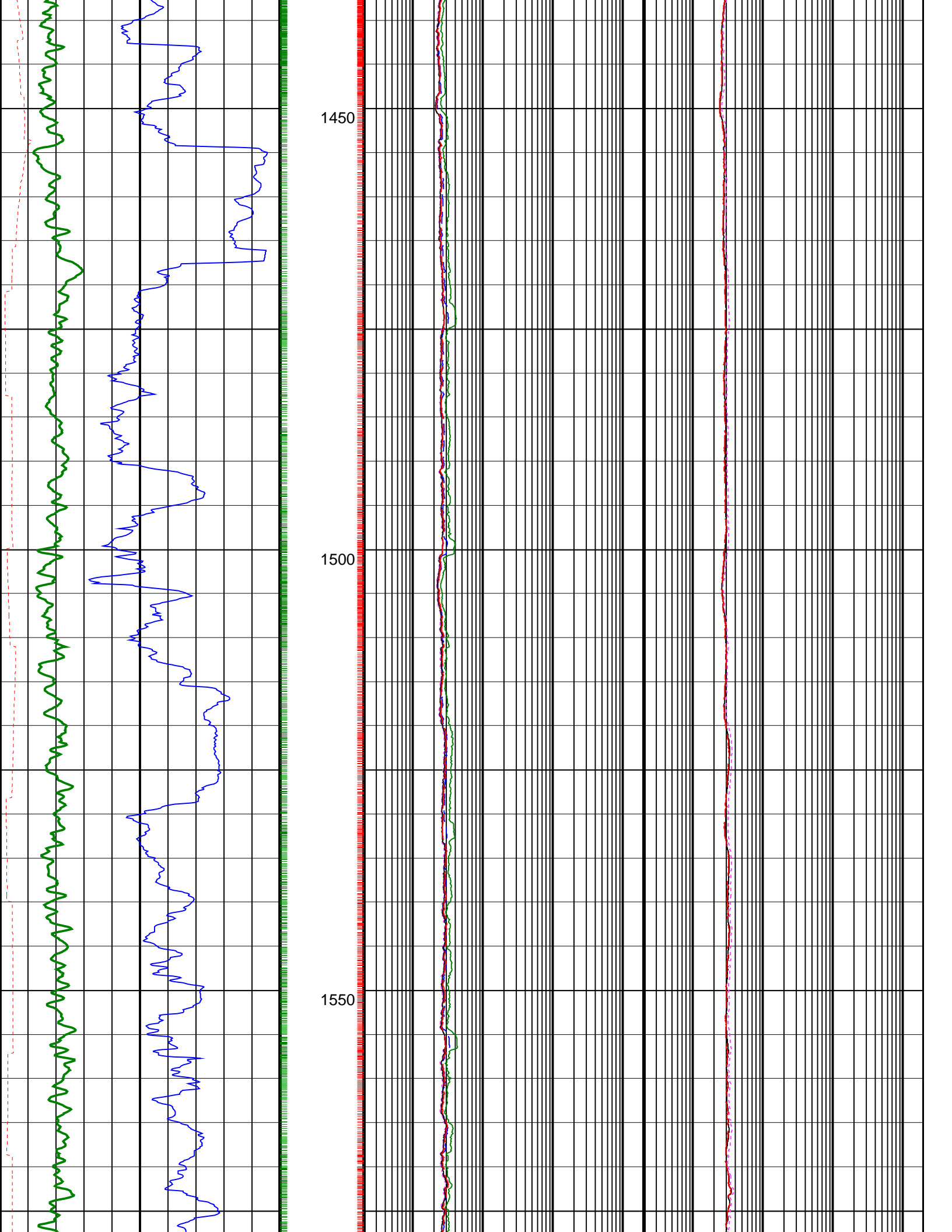


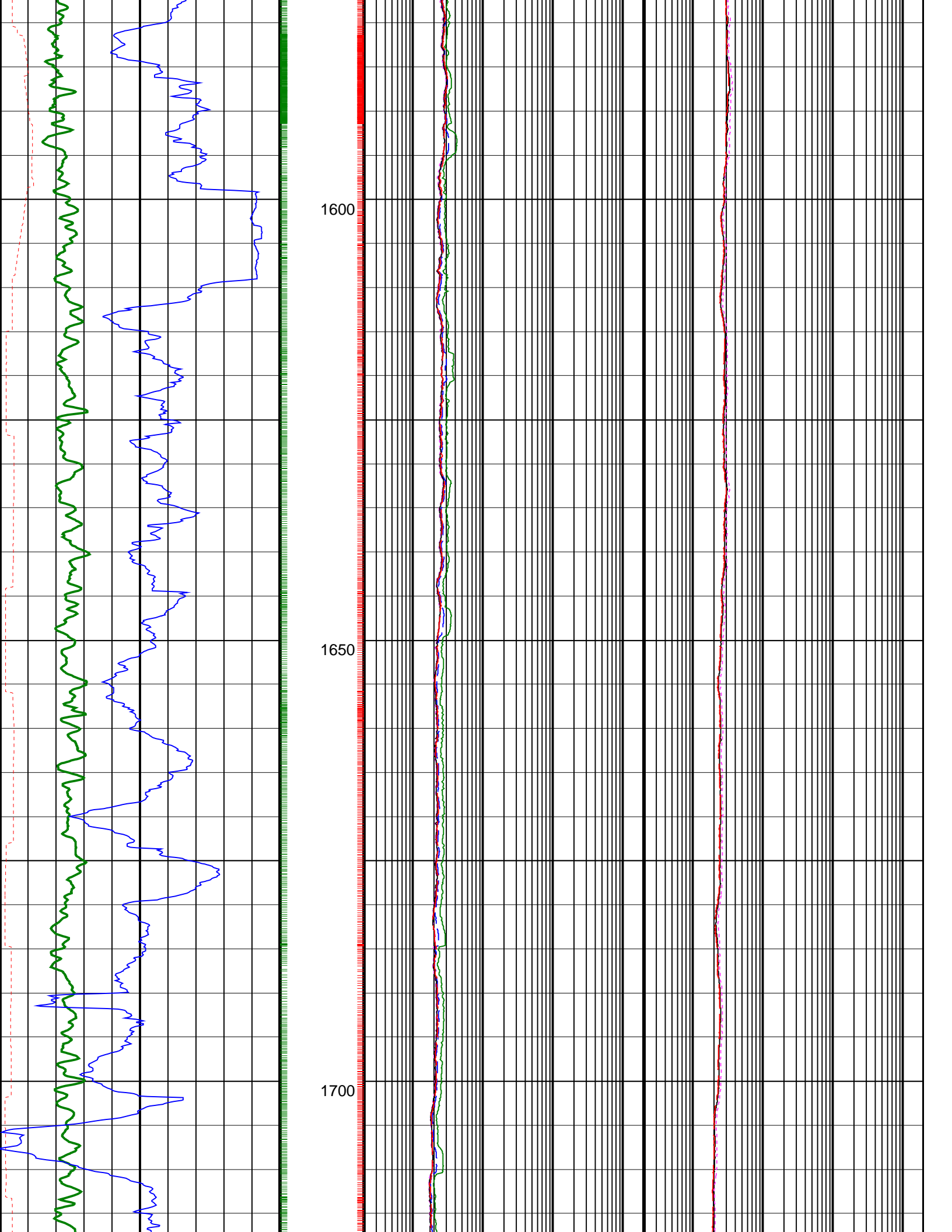


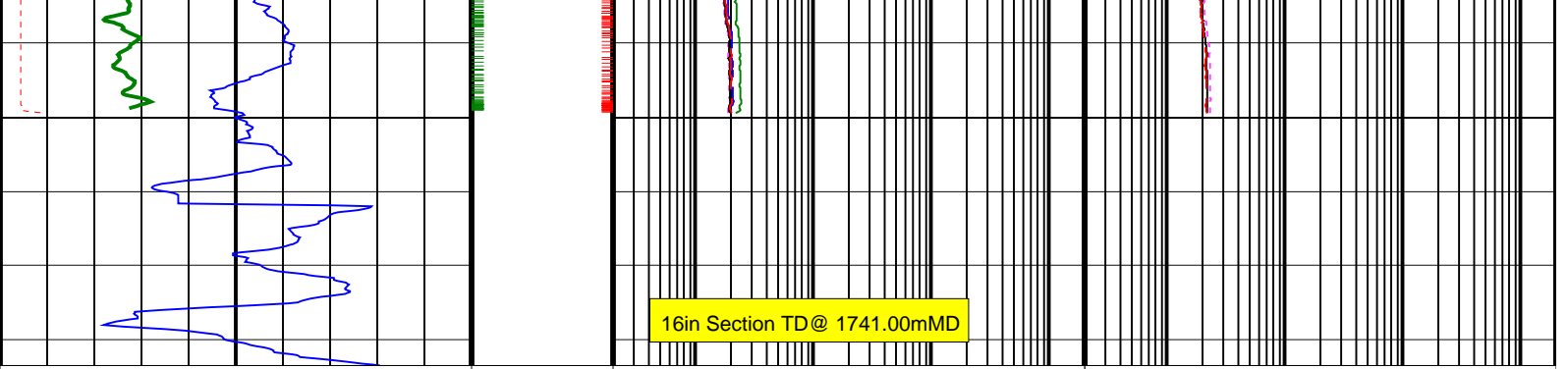












ARC Gamma Ray (GR_ARC) 0 (GAPI) 200	ARC Phase-Shift Resistivity 16-in. at 2 MHz (P16H) 0.2 (OHMM) 2000	ARC Attenuation Resistivity 28-in. at 2 MHz (A28H) 0.2 (OHMM) 2000
ARC Resistivity Time After Bit (TAB_ARC_RES) 0 (HR) 10	ARC Phase-Shift Resistivity 22-in. at 2 MHz (P22H) 0.2 (OHMM) 2000	ARC Attenuation Resistivity 34-in. at 2 MHz (A34H) 0.2 (OHMM) 2000
Rate of Penetration, Averaged over Last 5ft (ROP5_RM) 200 (M/HR) 0	ARC Phase-Shift Resistivity 28-in. at 2 MHz (P28H) 0.2 (OHMM) 2000	ARC Attenuation Resistivity 40-in. at 2 MHz (A40H) 0.2 (OHMM) 2000
	ARC Phase-Shift Resistivity 34-in. at 2 MHz (P34H) 0.2 (OHMM) 2000	
	ARC Phase-Shift Resistivity 40-in. at 2 MHz (P40H) 0.2 (OHMM) 2000	

PIP SUMMARY

- ┆ ARC Gamma Ray Samples
- ┆ ARC Resistivity Samples

IDEAL Version: ID13_0C_08
IDF