

# Elver-1\_VISION Resistivity RT 500TVD

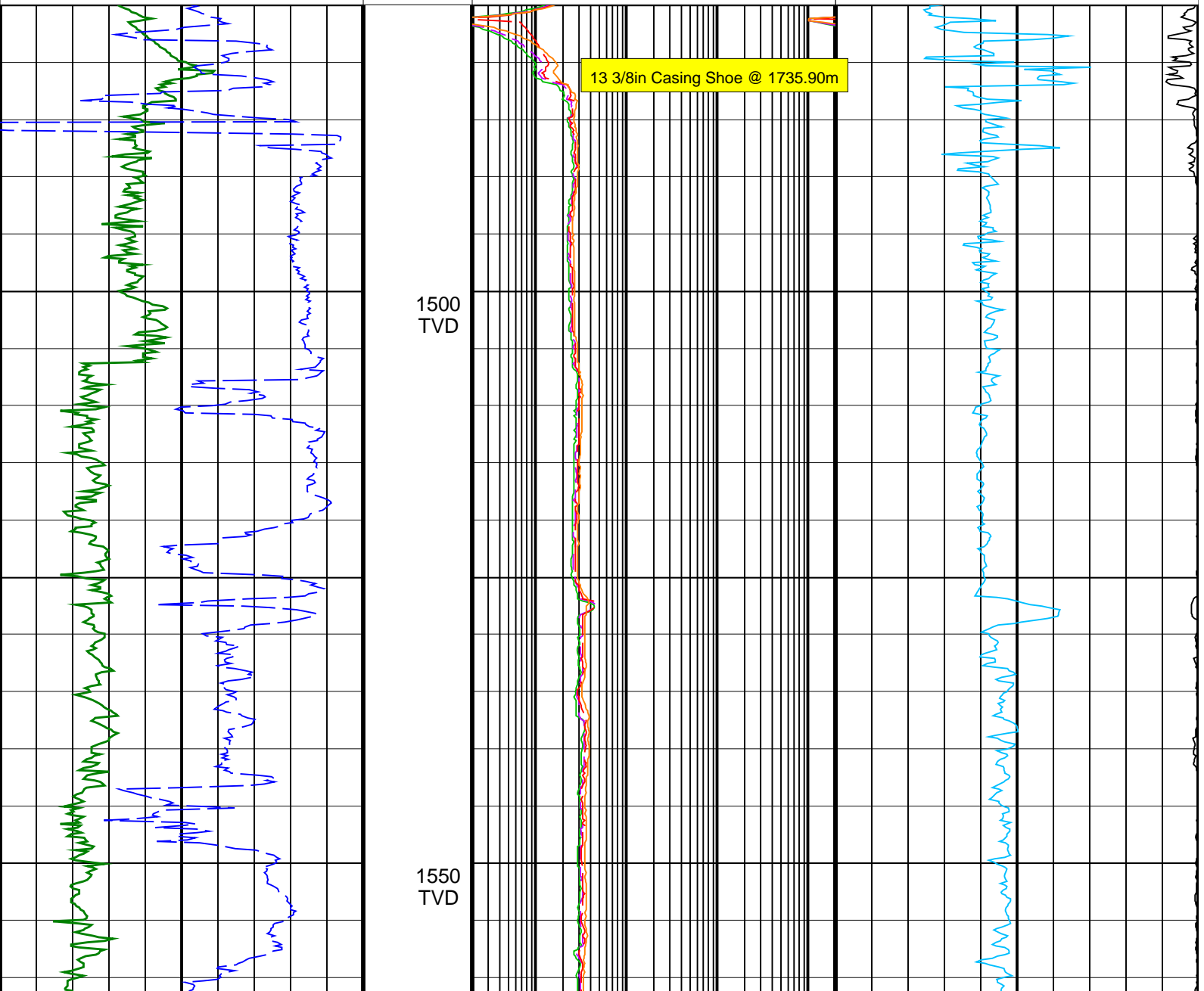
IDEAL Version: ID13\_OC\_08 <TVD> Vertical Scale: 1:500 Graphics File Created: 29-Dec-2008 14:13

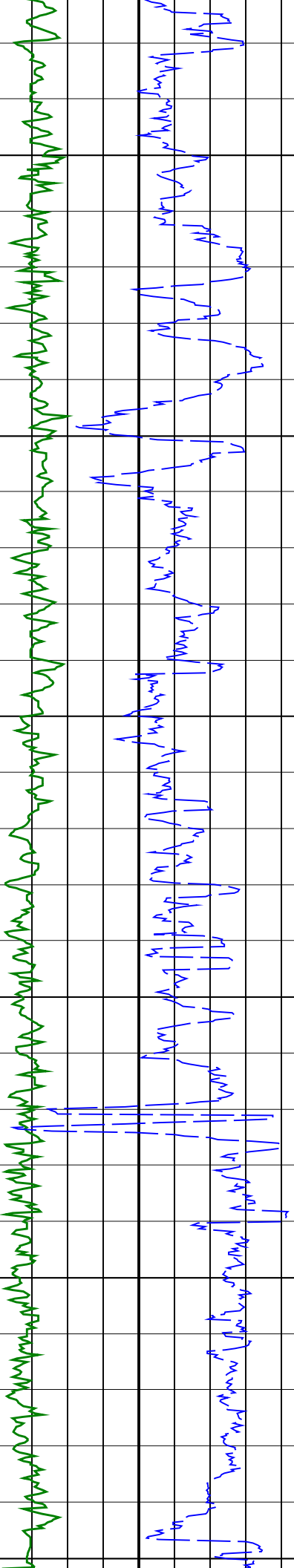
BHI depth referencing used from 1737.0mMD to section TD

ARC Gamma Ray, Real-Time (ARC_GR_RT)		
0	(GAPI)	200
ROP*5 (ROP5)		
200	(M/HR)	0

ARC BHCorr Attenuation Resistivity 40-in. at 2 MHz, Real-Time (A40H_RT)		
0.2	(OHMM)	2000
ARC BHCorr Phase-Shift Resistivity 40-in. at 2 MHz, Real-Time (P40H_RT)		
0.2	(OHMM)	2000
ARC BHCorr Phase-Shift Resistivity 28-in. at 2 MHz, Real-Time (P28H_RT)		
0.2	(OHMM)	2000
ARC BHCorr Phase-Shift Resistivity 16-in. at 2 MHz, Real-Time (P16H_RT)		
0.2	(OHMM)	2000

Delta-T Compressional, Real-Time (DTCO_RT)		
140	(US/F)	40
Coherence at Compressional Peak, Real-Time (CHCO_RT)		
-4	(----)	1

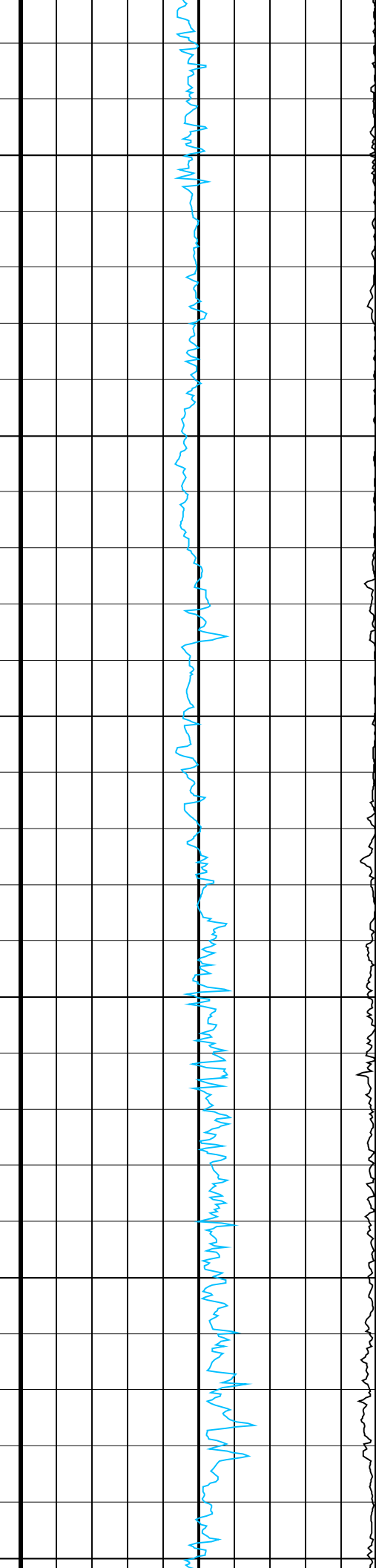
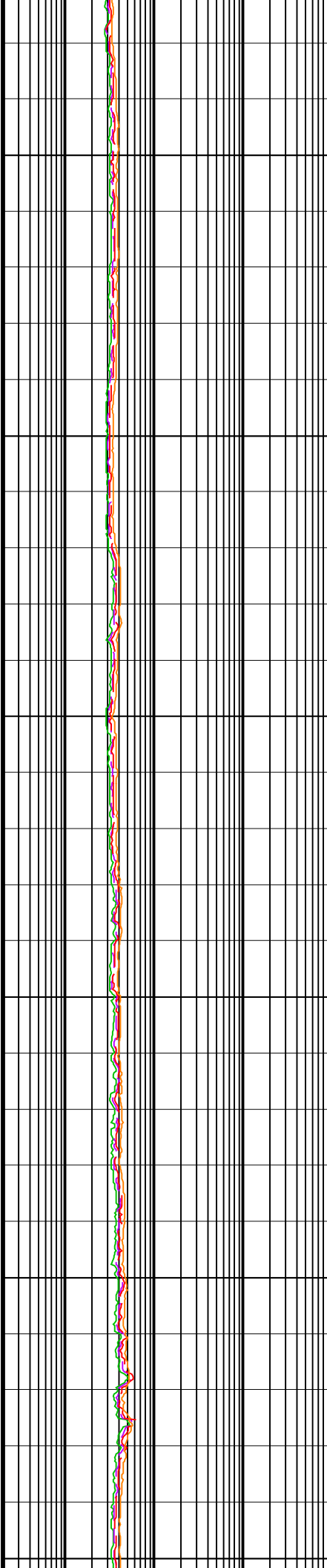




1600  
TVD

1650  
TVD

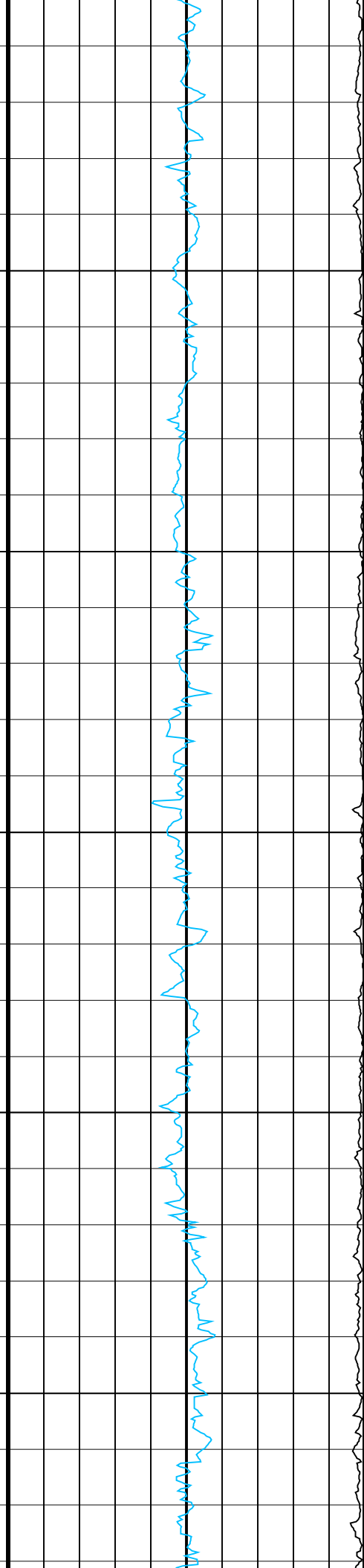
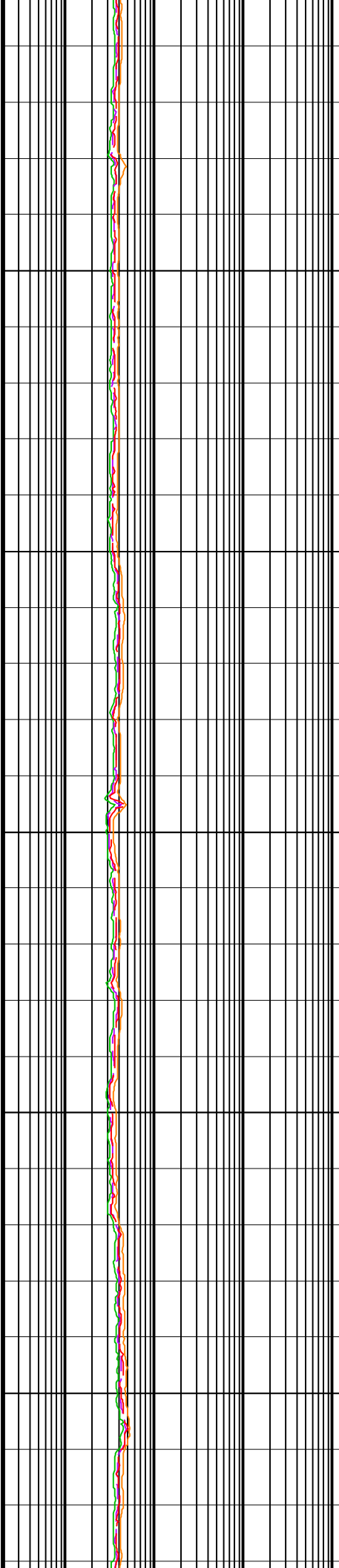
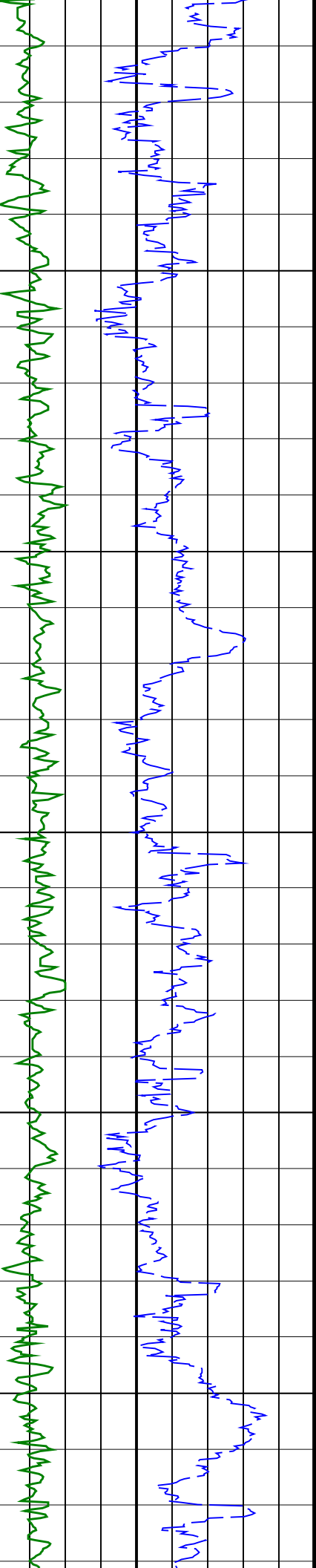
1700

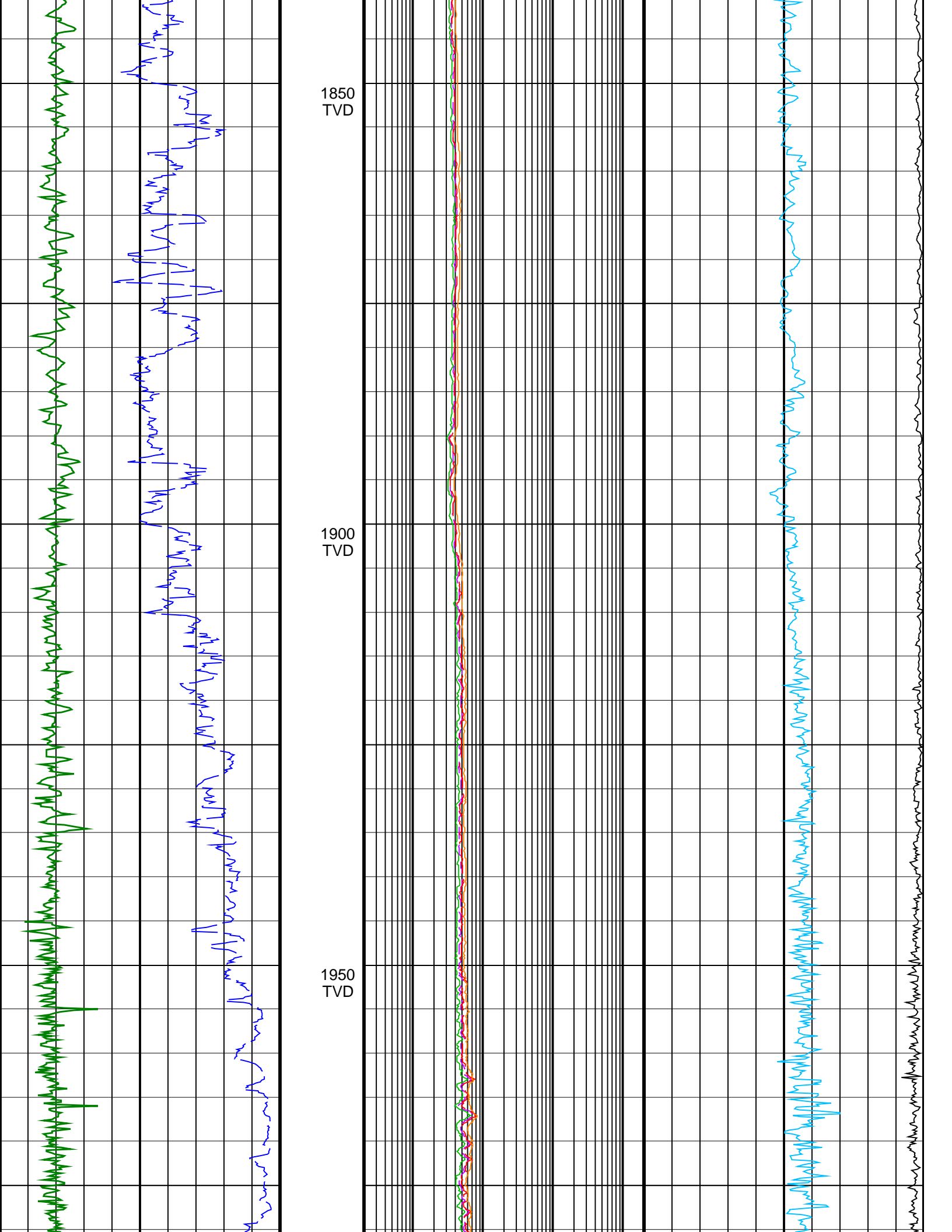


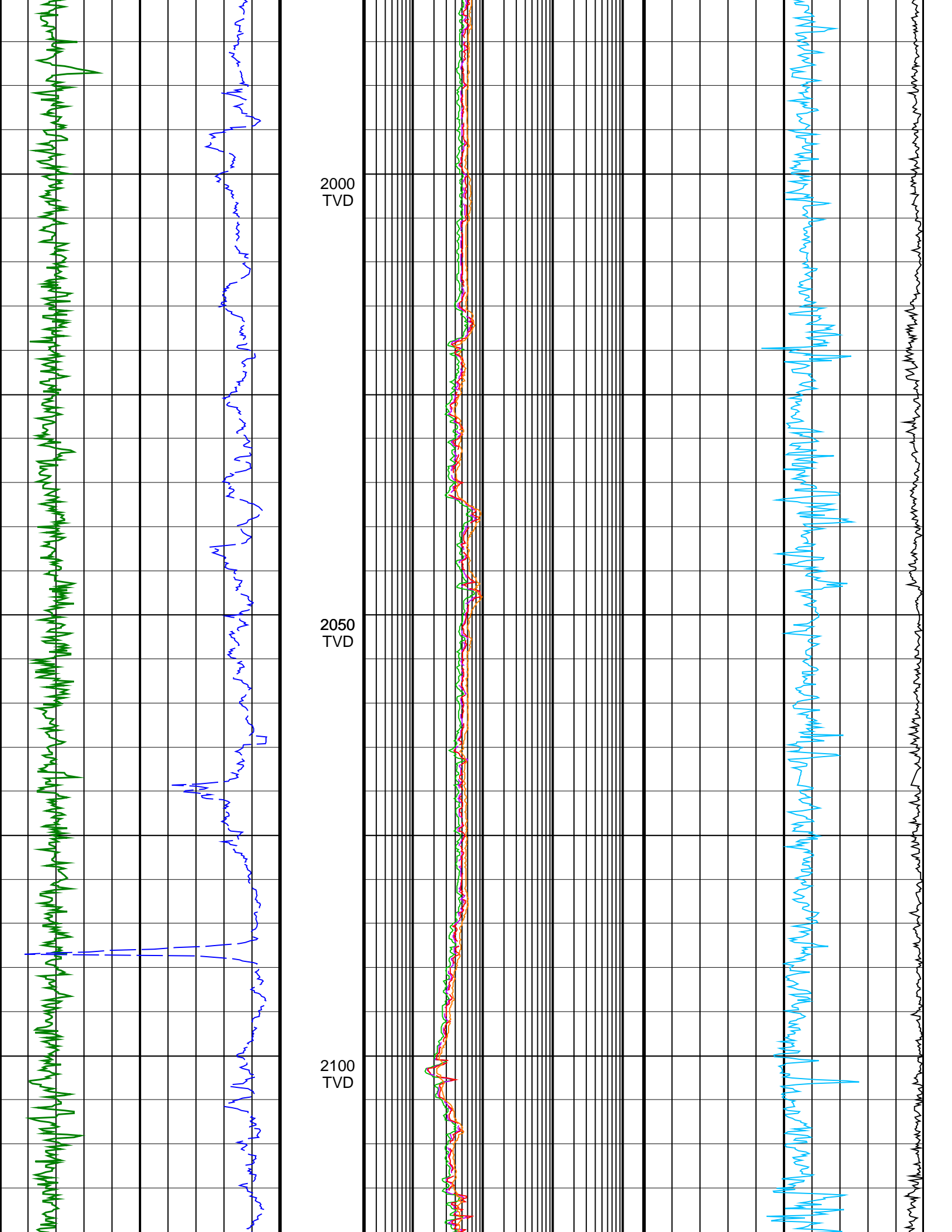
1700  
TVD

1750  
TVD

1800  
TVD



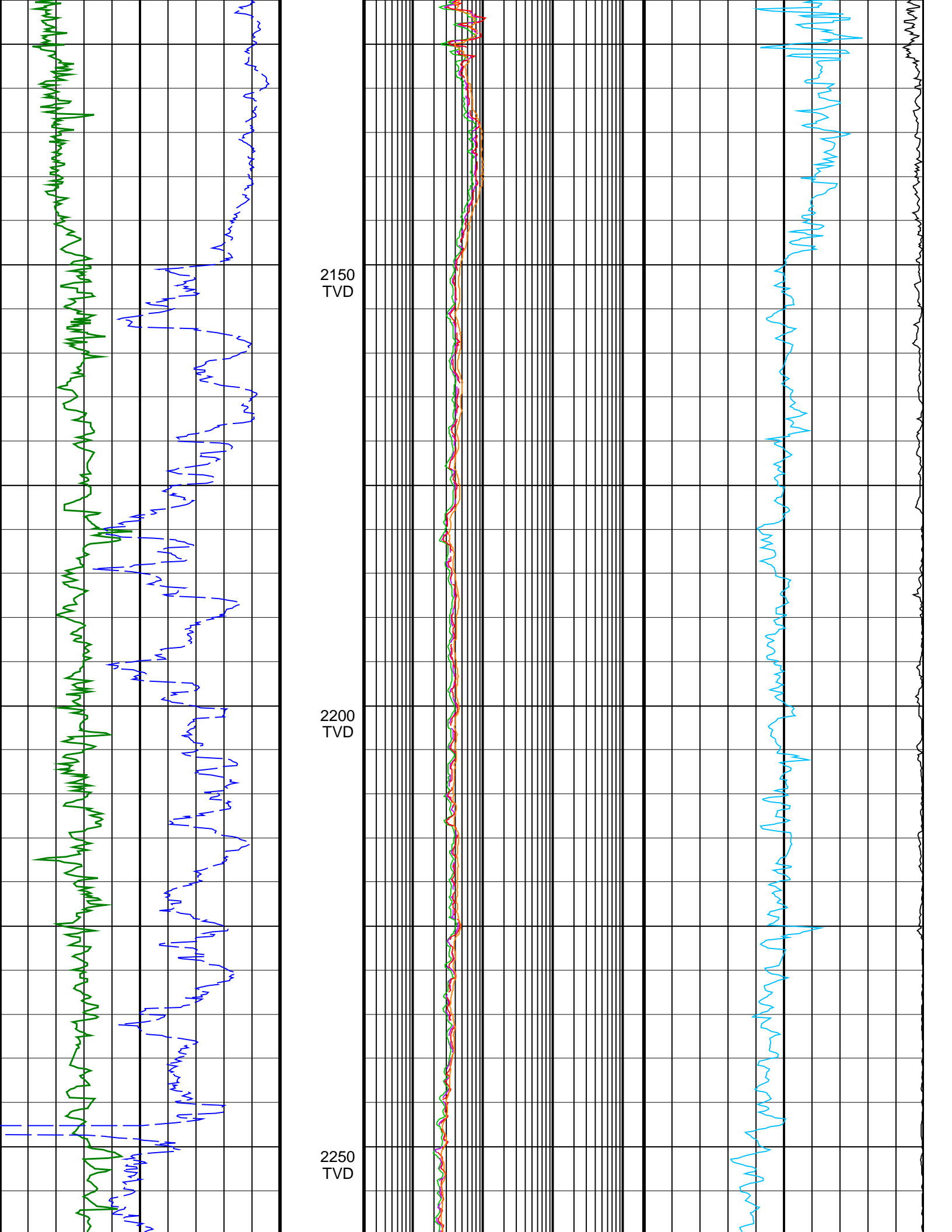


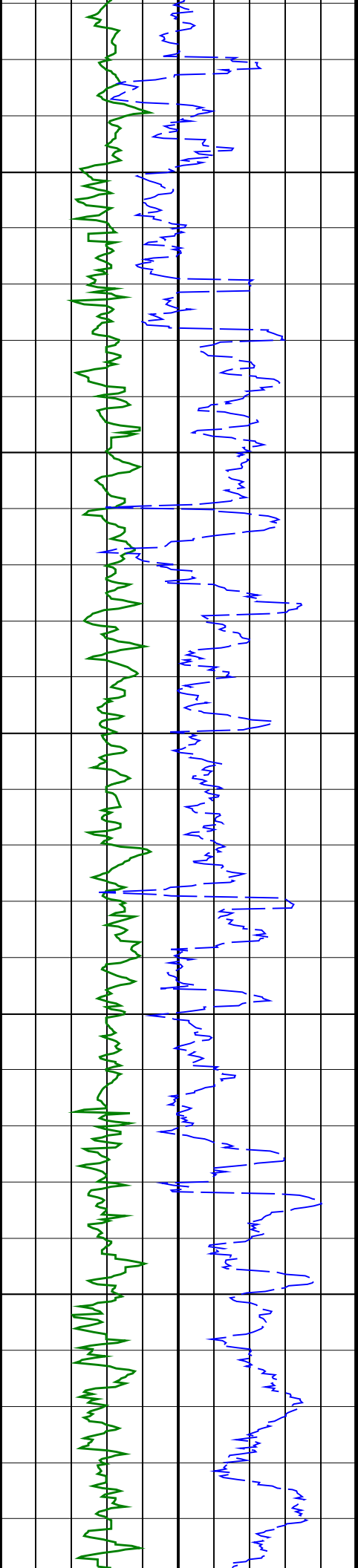


2000  
TVD

2050  
TVD

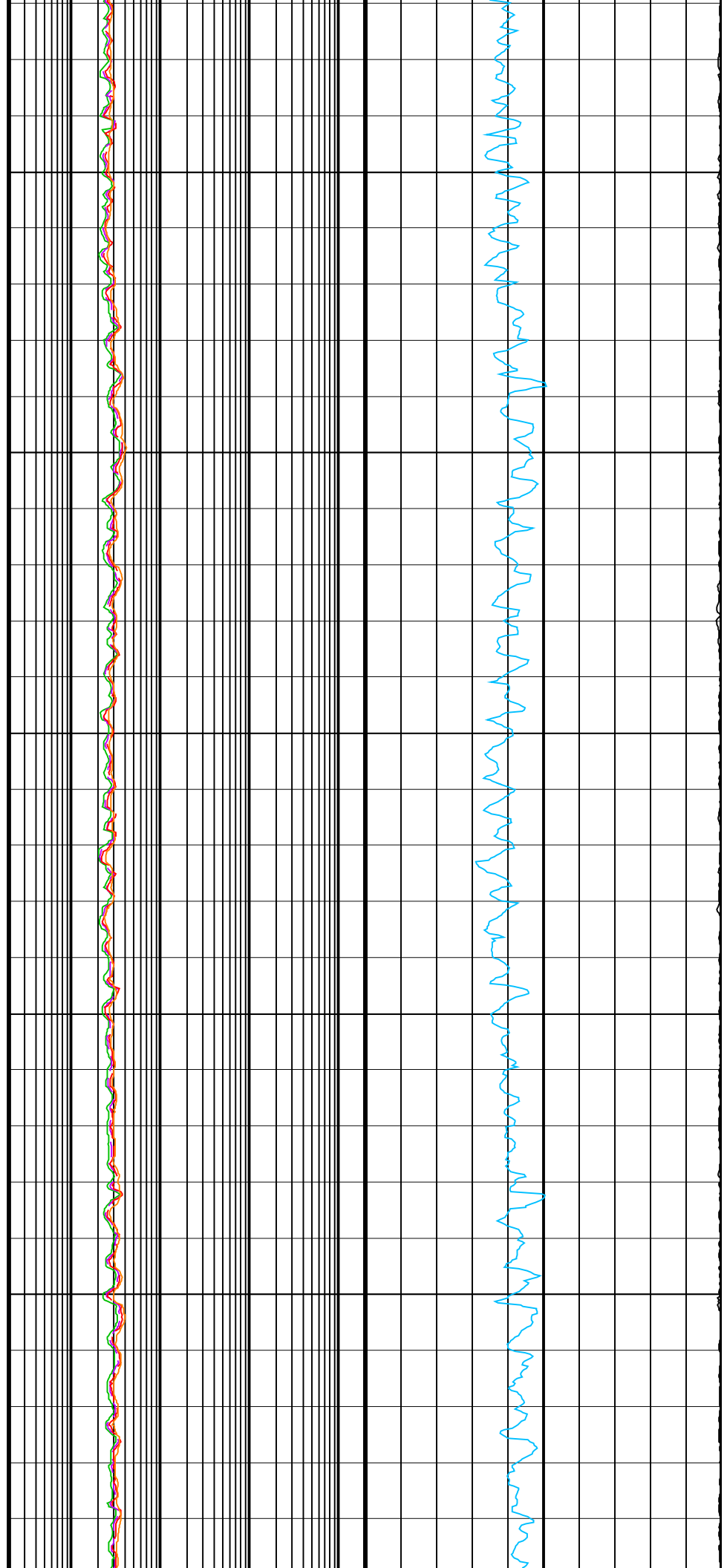
2100  
TVD

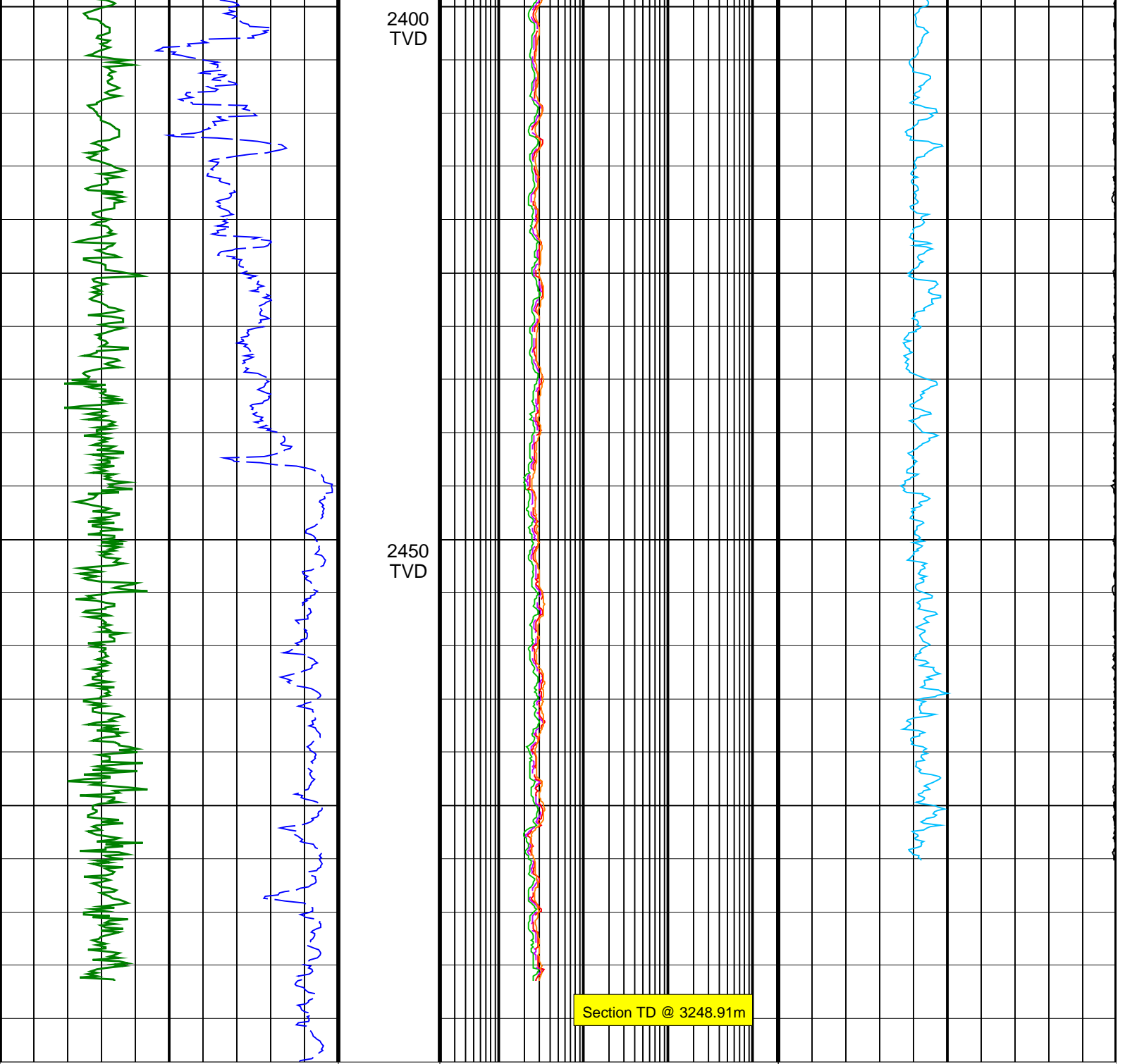




2300  
TVD

2350  
TVD





2400  
TVD

2450  
TVD

Section TD @ 3248.91m

<p><b>ROP*5 (ROP5)</b> 200 (M/HR) 0</p>	<p><b>ARC BHCorr Phase-Shift Resistivity</b> 16-in. at 2 MHz, Real-Time (P16H_RT) 0.2 (OHMM) 2000</p>	<p><b>Coherence at Compressional Peak,</b> Real-Time (CHCO_RT) -4 (----) 1</p>
<p><b>ARC Gamma Ray, Real-Time (ARC_GR_RT)</b> 0 (GAPI) 200</p>	<p><b>ARC BHCorr Phase-Shift Resistivity</b> 28-in. at 2 MHz, Real-Time (P28H_RT) 0.2 (OHMM) 2000</p>	<p><b>Delta-T Compressional, Real-Time</b> (DTCO_RT) 140 (US/F) 40</p>
	<p><b>ARC BHCorr Phase-Shift Resistivity</b> 40-in. at 2 MHz, Real-Time (P40H_RT) 0.2 (OHMM) 2000</p>	
	<p><b>ARC BHCorr Attenuation Resistivity</b> 40-in. at 2 MHz, Real-Time (A40H_RT) 0.2 (OHMM) 2000</p>	