

Elver-1_VISION Resistivity RT 500MD

IDEAL Version: ID13_0C_08 <MD > Vertical Scale: 1:500

Graphics File Created: 29-Dec-2008 14:13

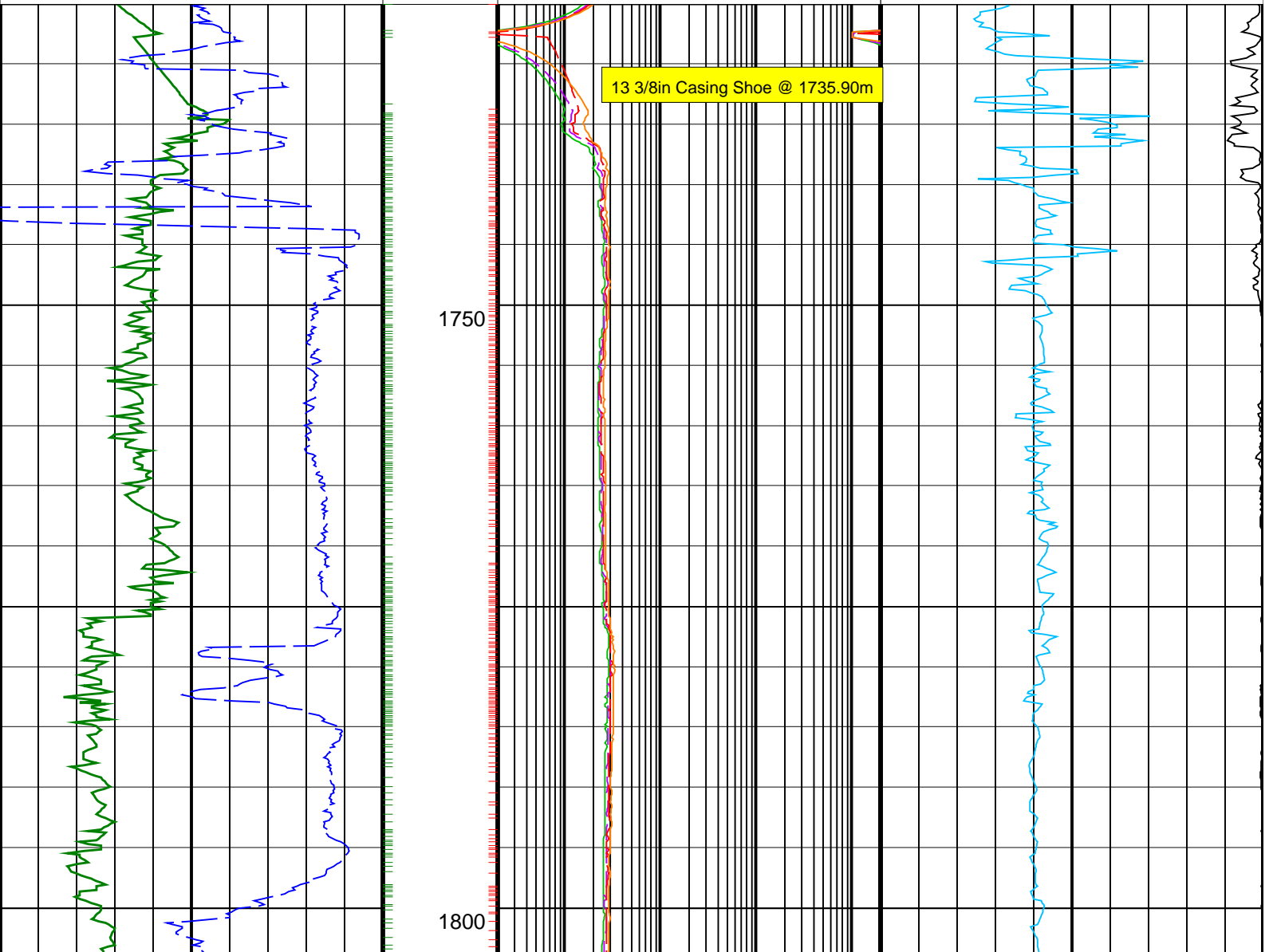
PIP SUMMARY

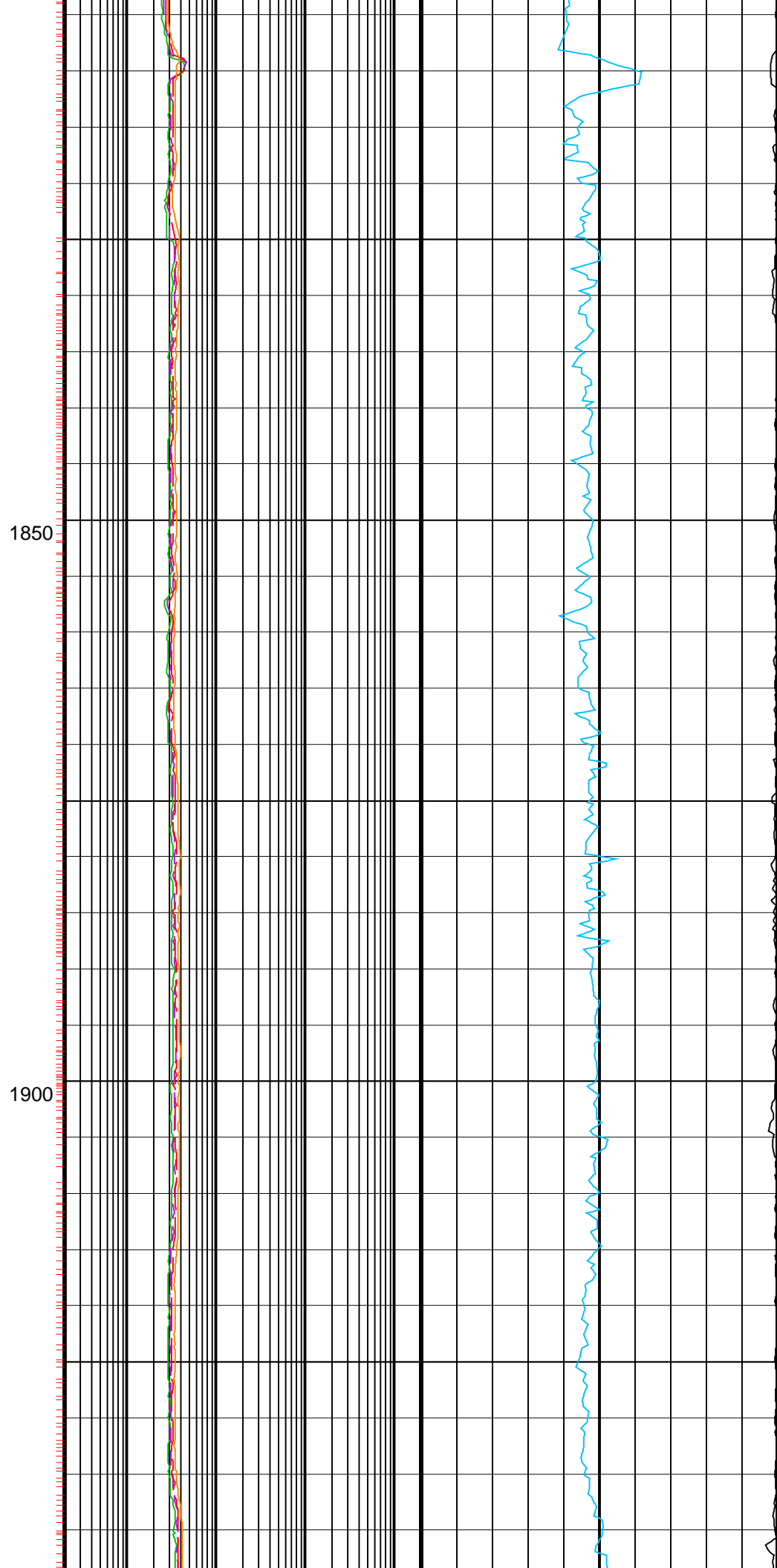
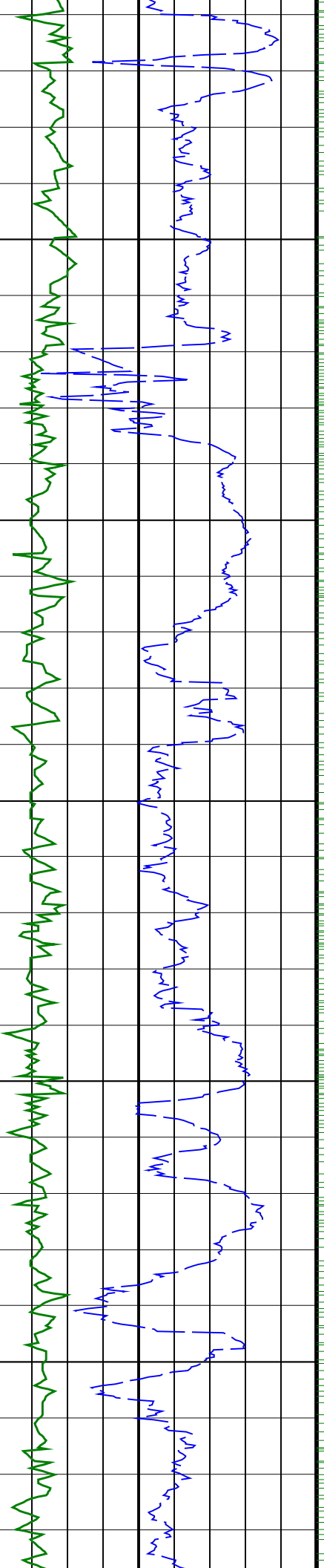
- └ ARC GRAPP PIP
- └ IMP RP16 PIP

BHI depth referencing used from 1737.0m to section TD

ARC BHCorr Attenuation Resistivity 40-in. at 2 MHz, Real-Time (A40H_RT) 0.2 (OHMM) 2000			
ARC BHCorr Phase-Shift Resistivity 40-in. at 2 MHz, Real-Time (P40H_RT) 0.2 (OHMM) 2000			
ARC BHCorr Phase-Shift Resistivity 28-in. at 2 MHz, Real-Time (P28H_RT) 0.2 (OHMM) 2000		Delta-T Compressional, Real-Time (DTCO_RT) 140 (US/F) 40	
ARC BHCorr Phase-Shift Resistivity 16-in. at 2 MHz, Real-Time (P16H_RT) 0.2 (OHMM) 2000		Coherence at Compressional Peak, Real-Time (CHCO_RT) -4 (----) 1	

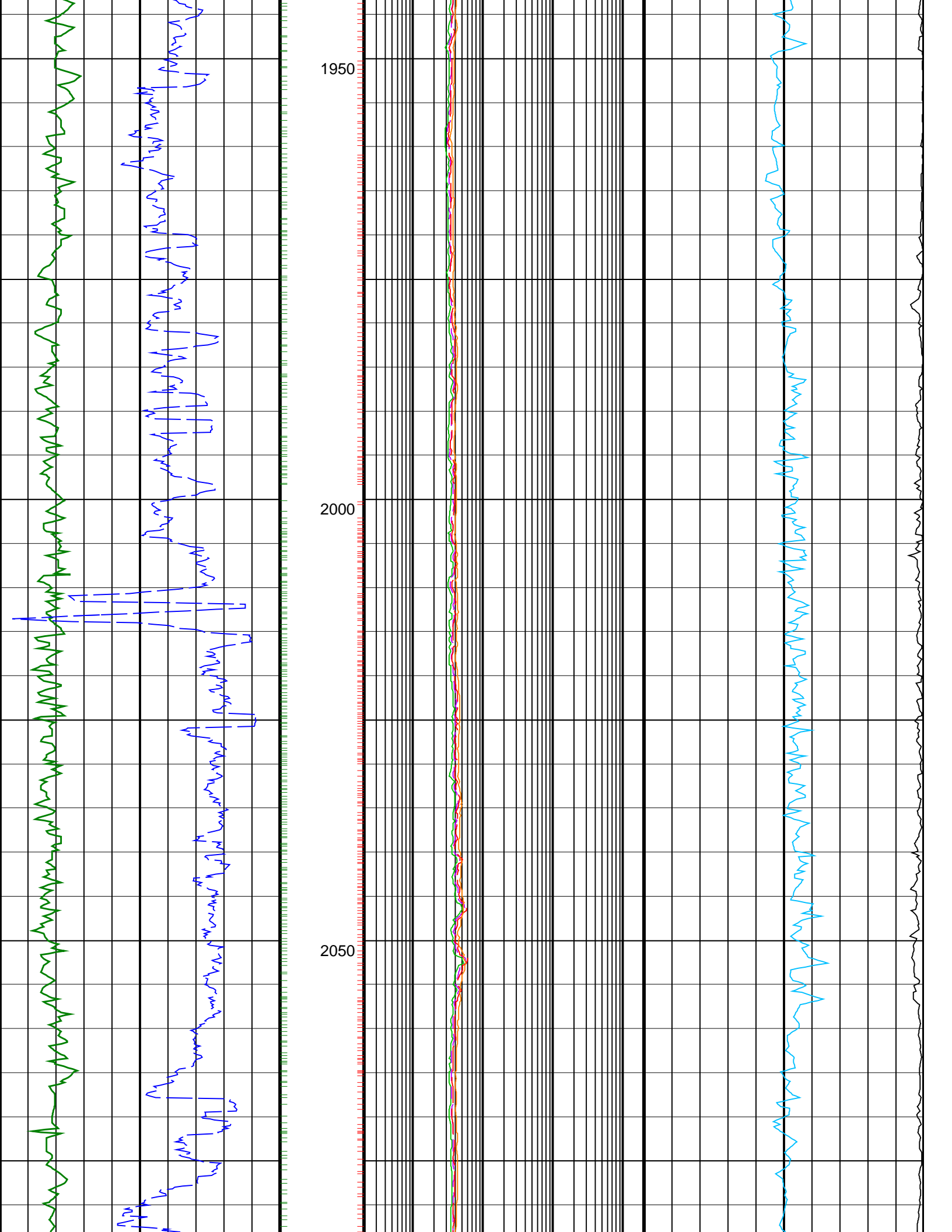
ARC Gamma Ray, Real-Time (ARC_GR_RT) (GAPI) 0 200		
ROP*5 (ROP5) (M/HR) 200 0		

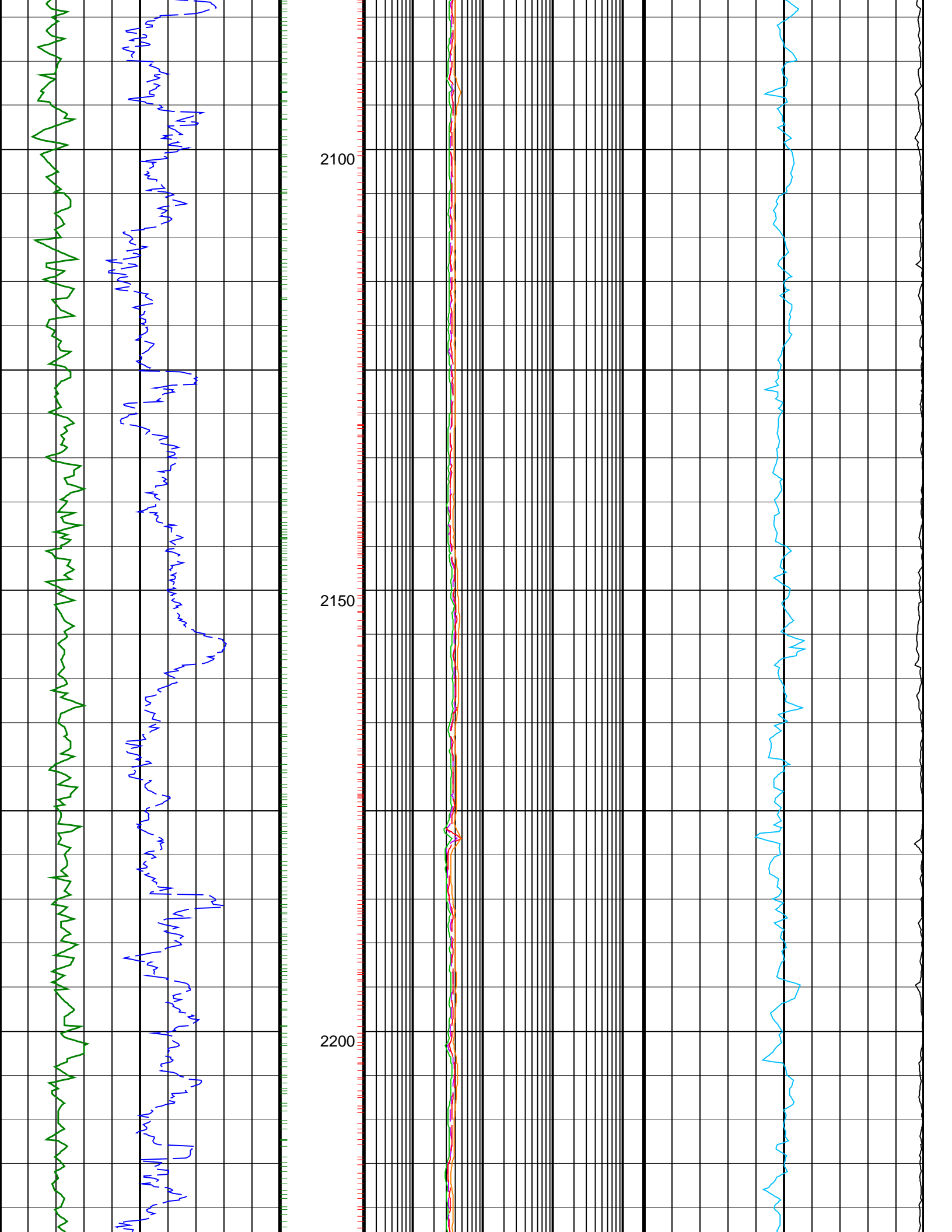


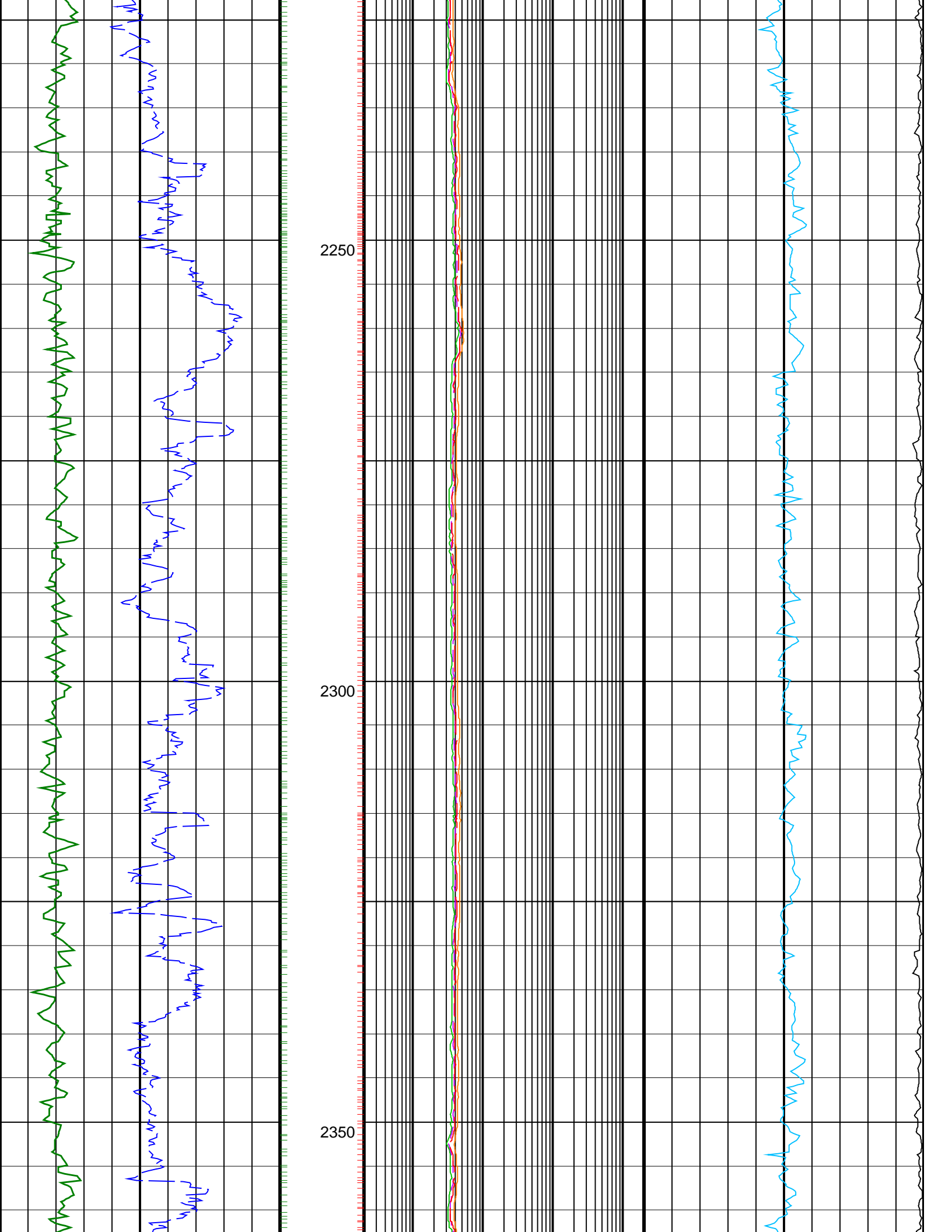


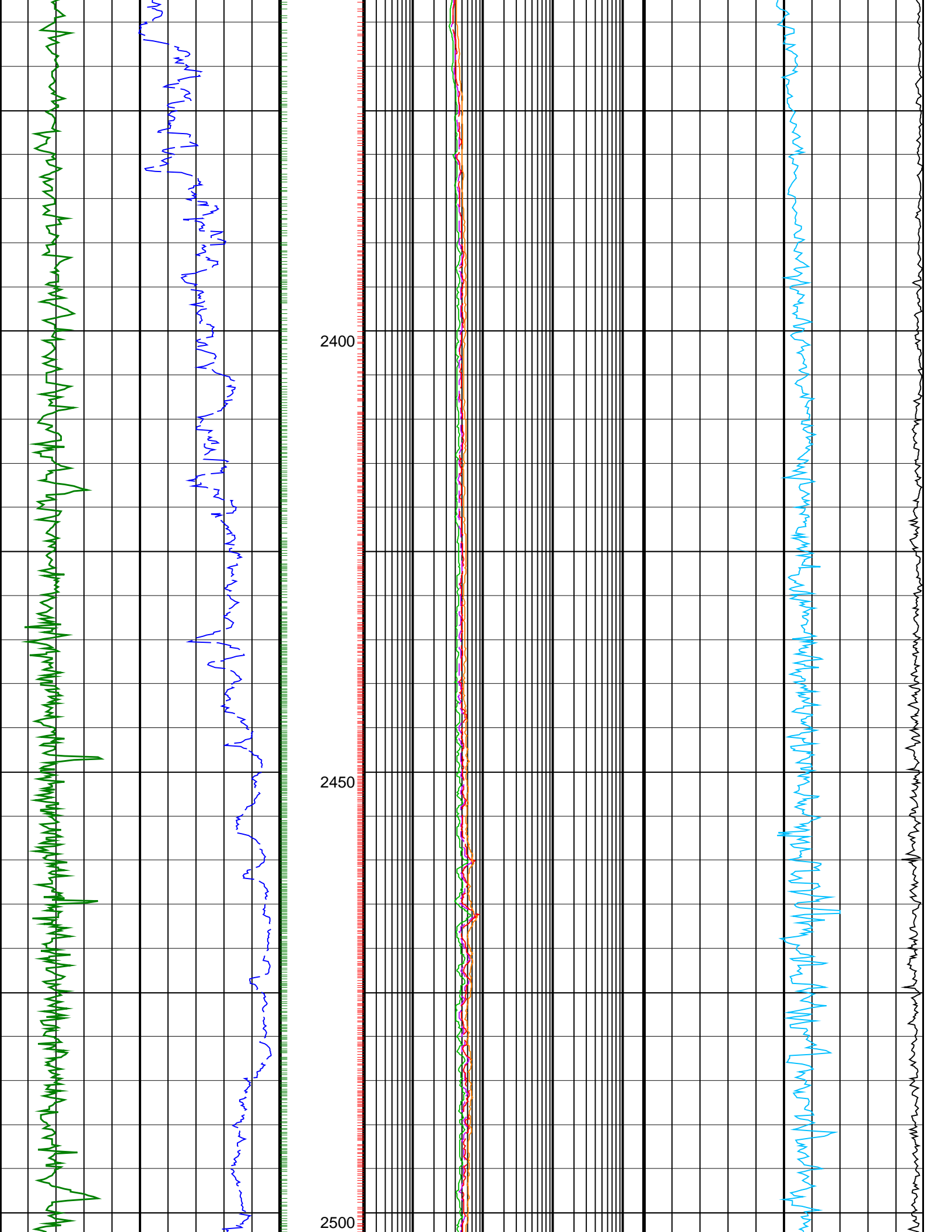
1850

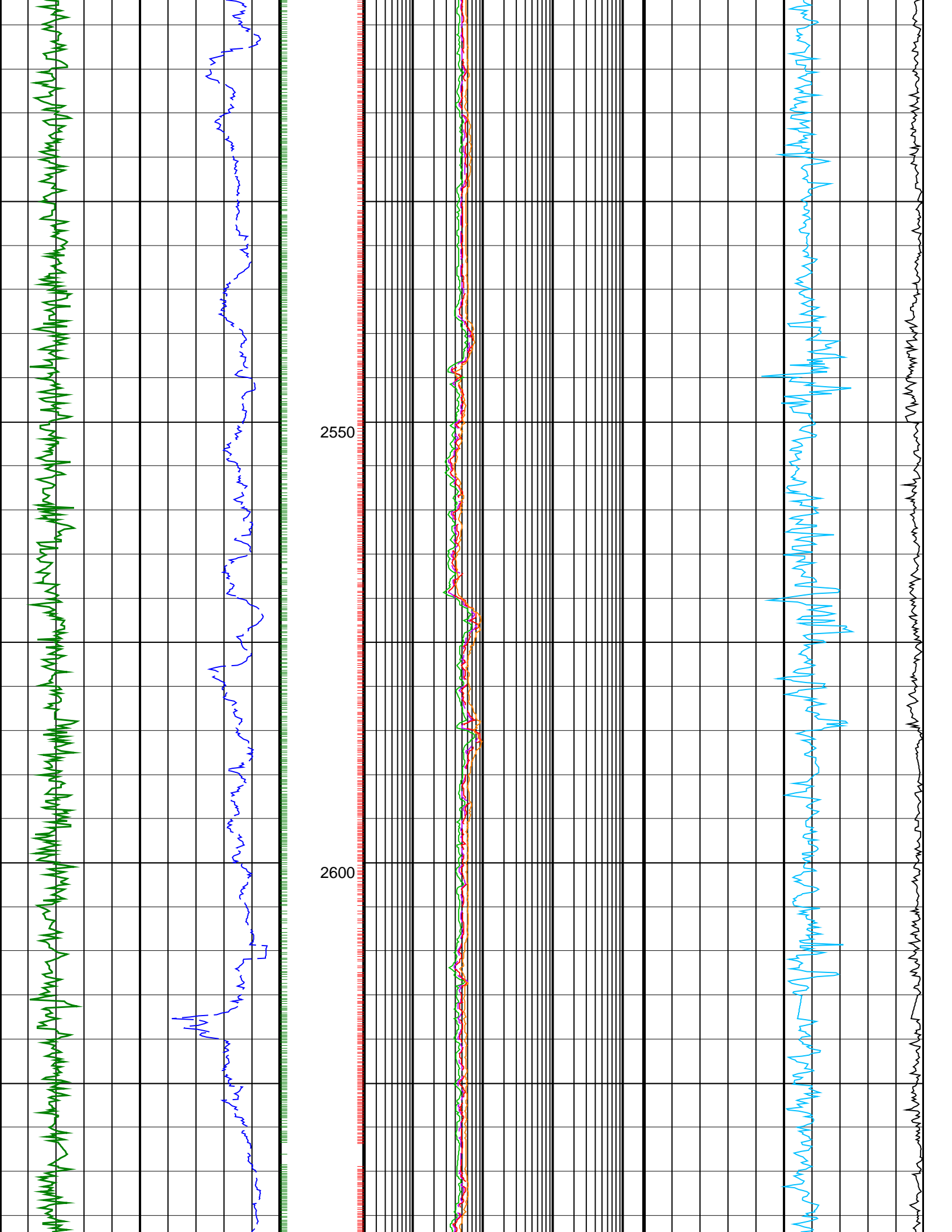
1900

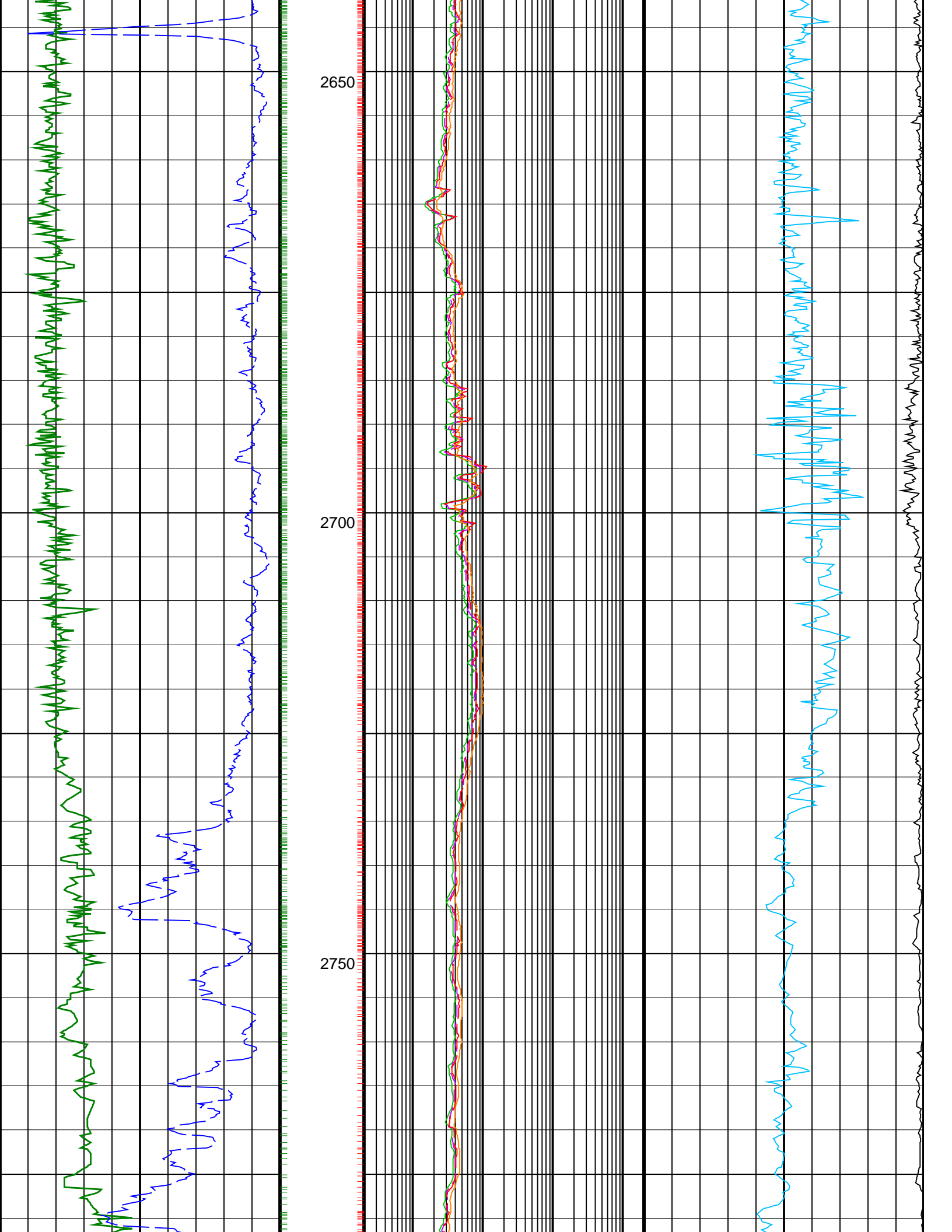


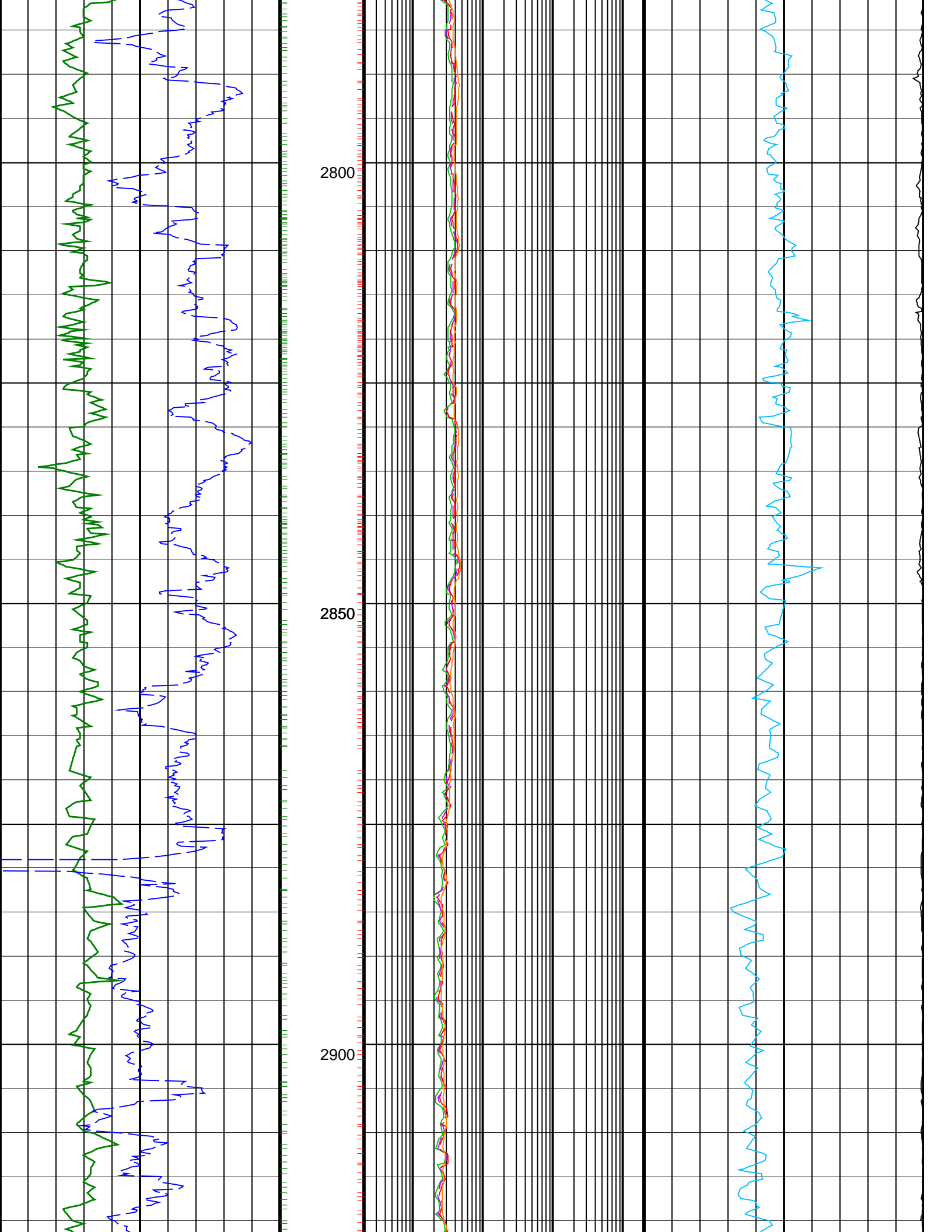


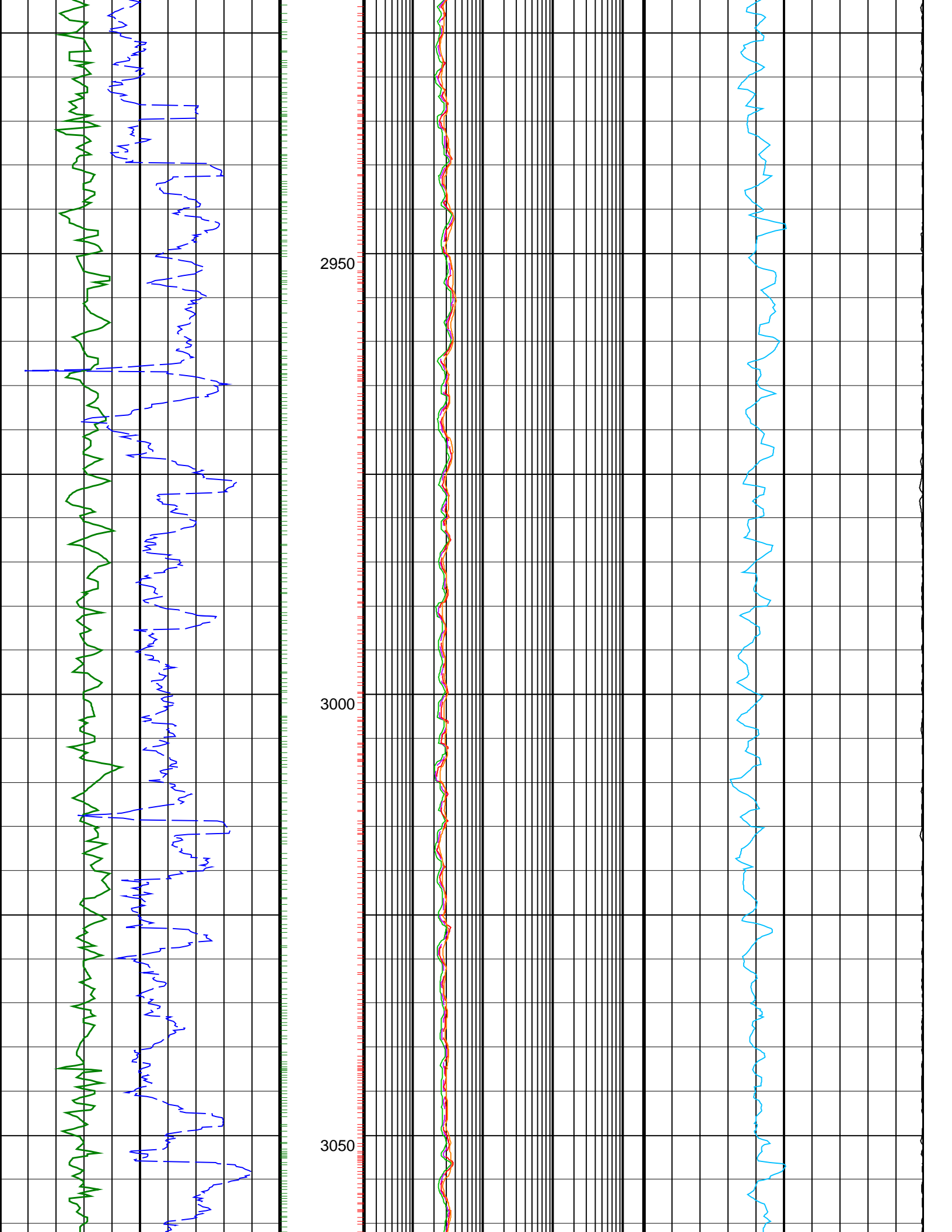


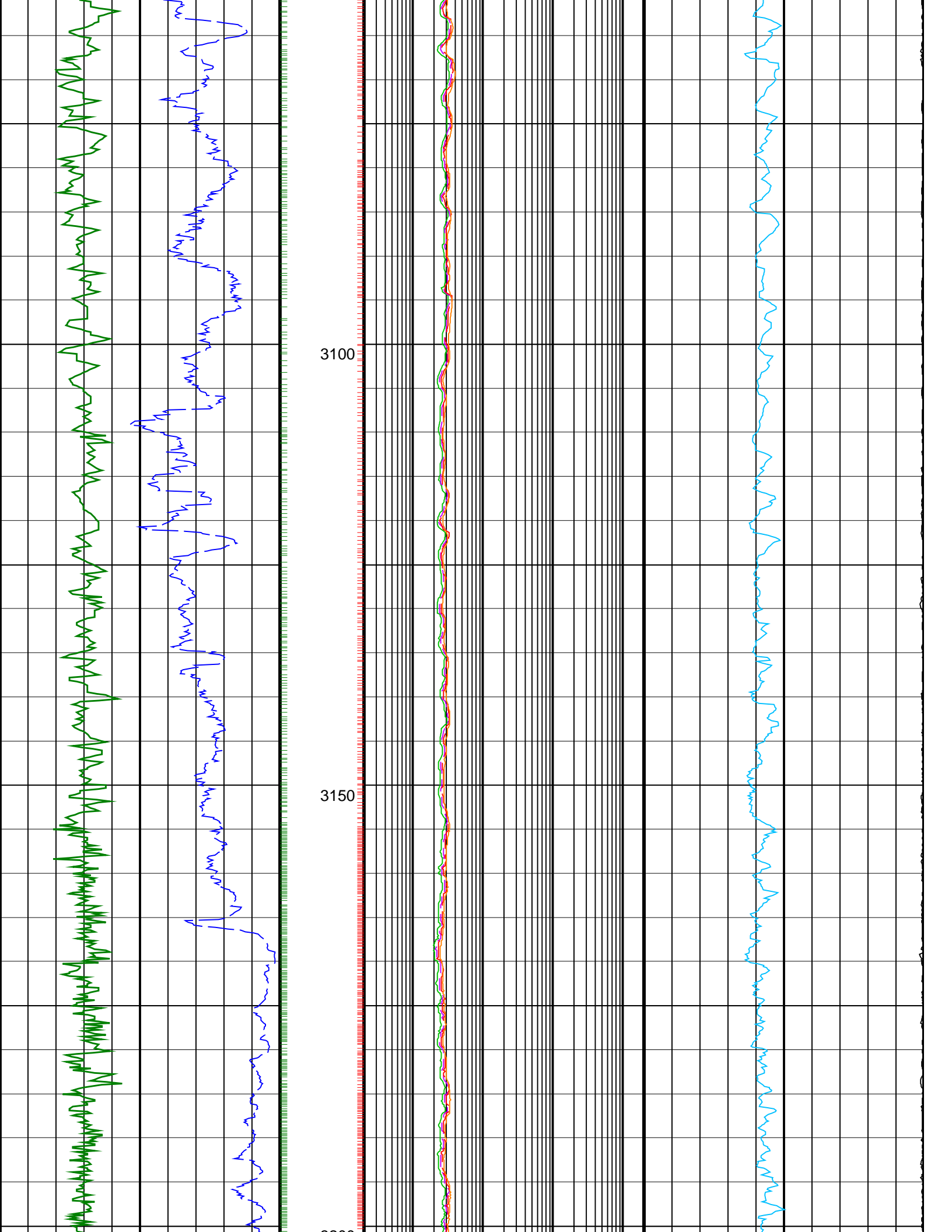


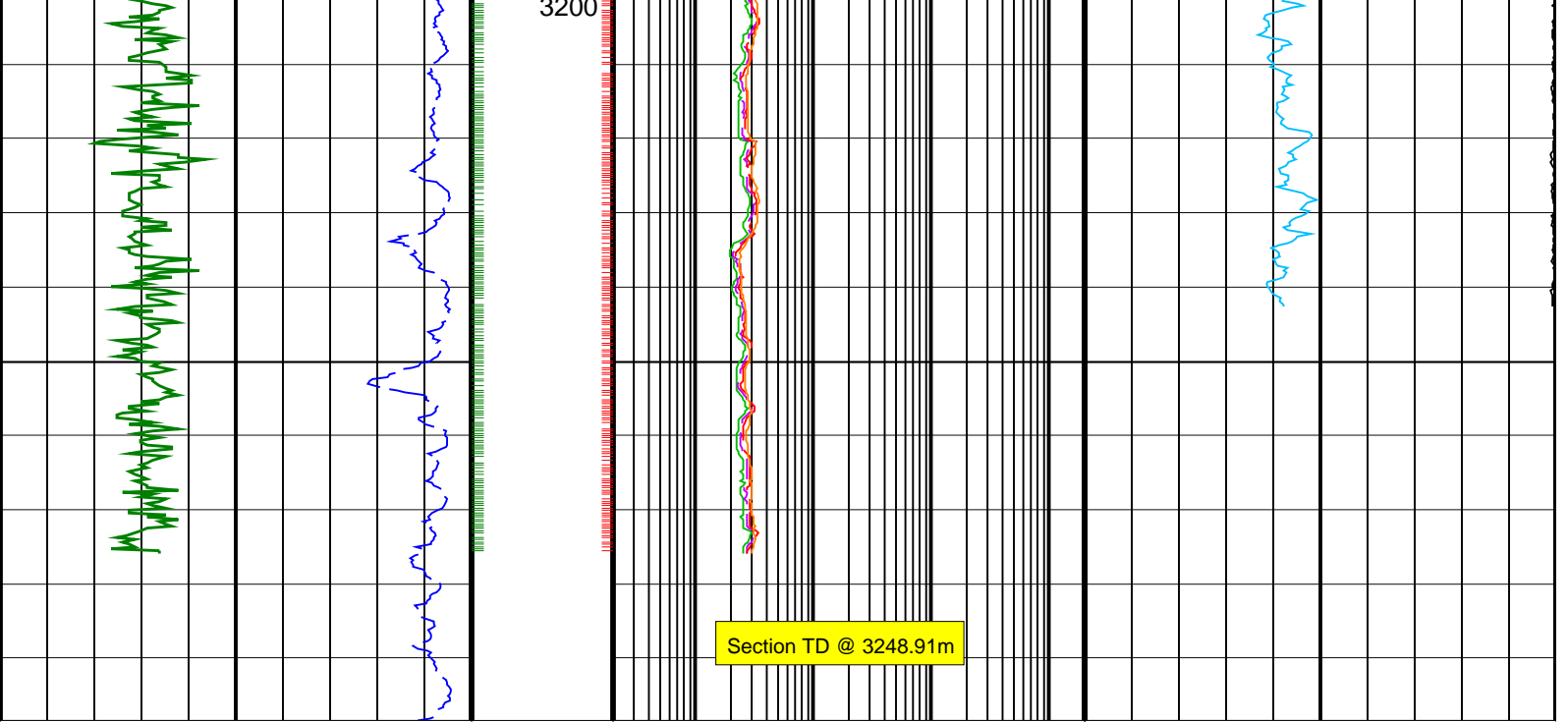












<p>ROP*5 (ROP5) (M/HR)</p> <p>200 0</p>	<p>ARC BHCorr Phase-Shift Resistivity 16-in. at 2 MHz, Real-Time (P16H_RT) (OHMM)</p> <p>0.2 2000</p>	<p>Coherence at Compressional Peak, Real-Time (CHCO_RT)</p> <p>-4 1</p>
<p>ARC Gamma Ray, Real-Time (ARC_GR_RT) (GAPI)</p> <p>0 200</p>	<p>ARC BHCorr Phase-Shift Resistivity 28-in. at 2 MHz, Real-Time (P28H_RT) (OHMM)</p> <p>0.2 2000</p>	<p>Delta-T Compressional, Real-Time (DTCO_RT) (US/F)</p> <p>140 40</p>
	<p>ARC BHCorr Phase-Shift Resistivity 40-in. at 2 MHz, Real-Time (P40H_RT) (OHMM)</p> <p>0.2 2000</p> <p>ARC BHCorr Attenuation Resistivity 40-in. at 2 MHz, Real-Time (A40H_RT) (OHMM)</p> <p>0.2 2000</p>	

PIP SUMMARY

- ┆ ARC GRAPP PIP
- ┆ IMP RP16 PIP