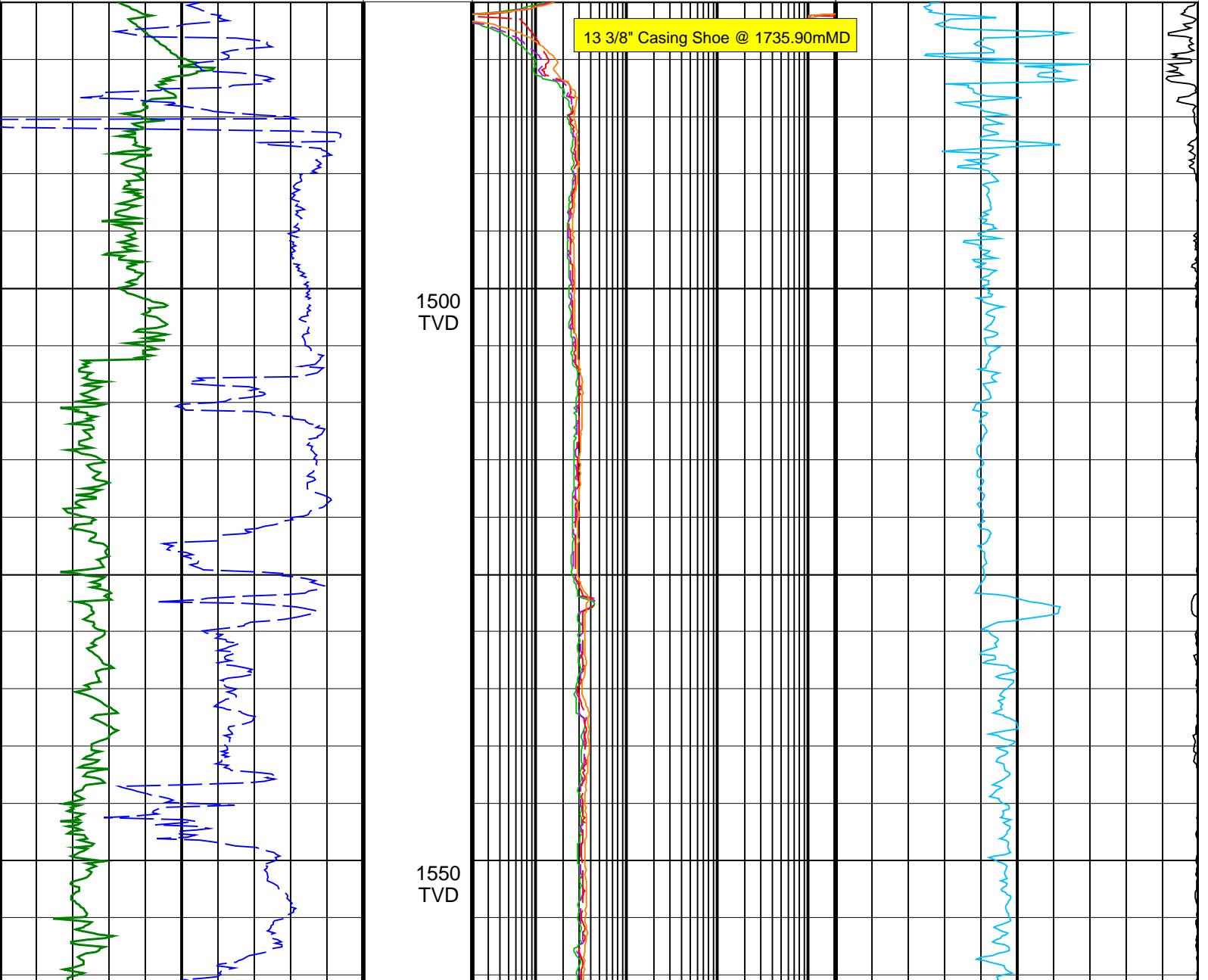


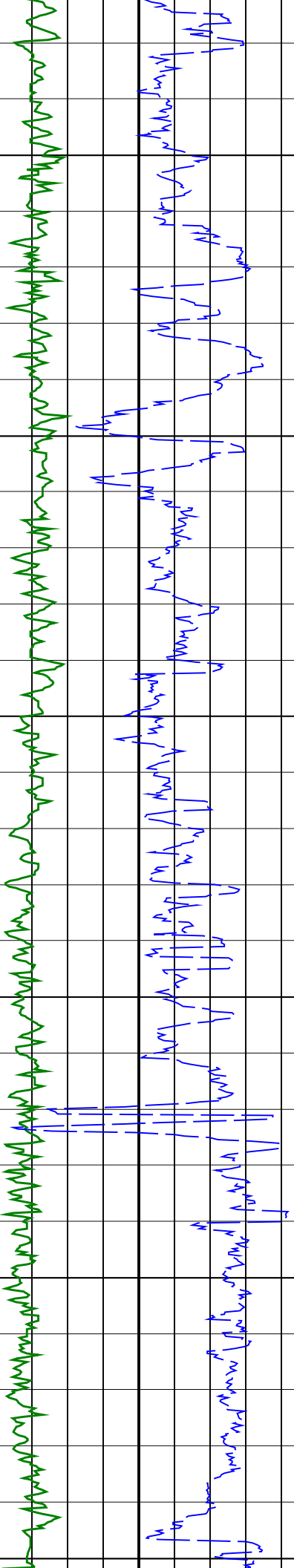
Elver-1_VISION Resistivity RT 500TVD

IDEAL Version: ID13_OC_08 <TVD> Vertical Scale: 1:500

Graphics File Created: 28-Dec-2008 08:09

	<p>ARC BHCorr Attenuation Resistivity 40-in. at 2 MHz, Real-Time (A40H_RT) 0.2 (OHMM) 2000</p>	
<p>ARC Gamma Ray, Real-Time (ARC_GR_RT) 0 (GAPI) 200</p>	<p>ARC BHCorr Phase-Shift Resistivity 40-in. at 2 MHz, Real-Time (P40H_RT) 0.2 (OHMM) 2000</p>	
<p>ROP*5 (ROP5) 200 (M/HR) 0</p>	<p>ARC BHCorr Phase-Shift Resistivity 28-in. at 2 MHz, Real-Time (P28H_RT) 0.2 (OHMM) 2000</p>	<p>Delta-T Compressional, Real-Time (DTCO_RT) 140 (US/F) 40</p>
	<p>ARC BHCorr Phase-Shift Resistivity 16-in. at 2 MHz, Real-Time (P16H_RT) 0.2 (OHMM) 2000</p>	<p>Coherence at Compressional Peak, Real-Time (CHCO_RT) -4 (----) 1</p>

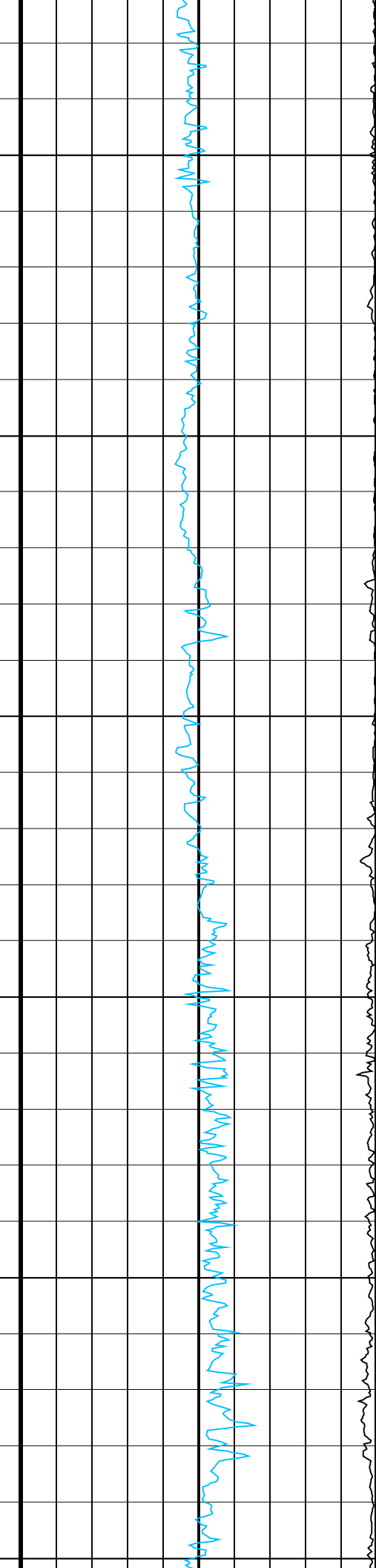
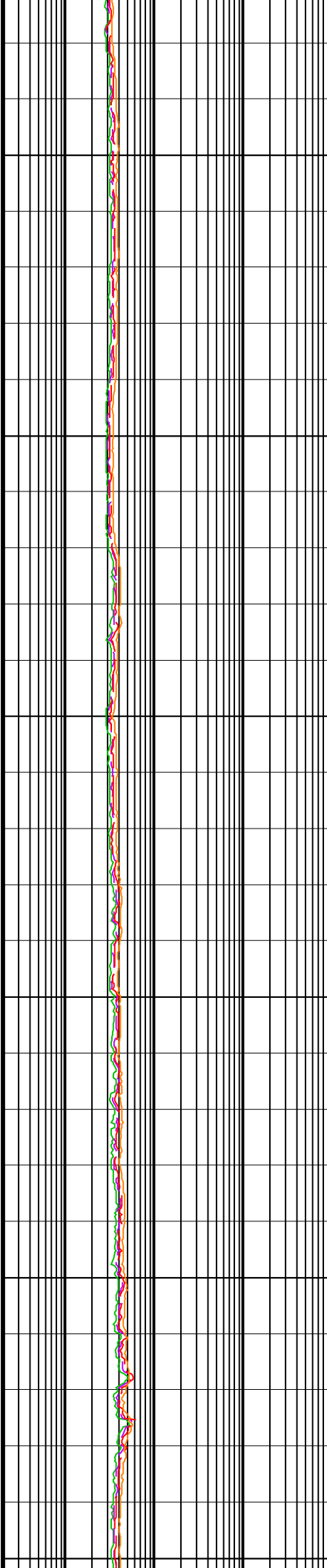


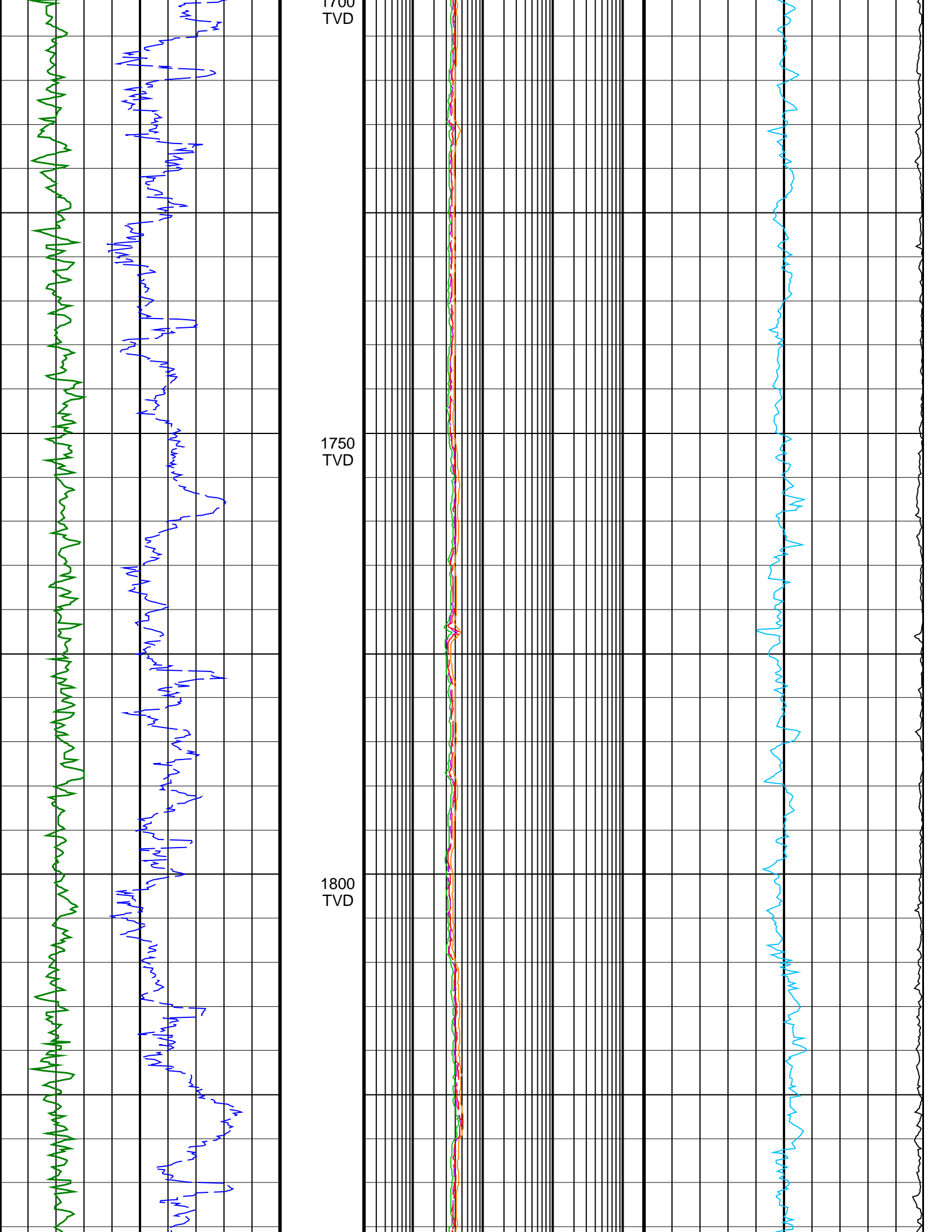


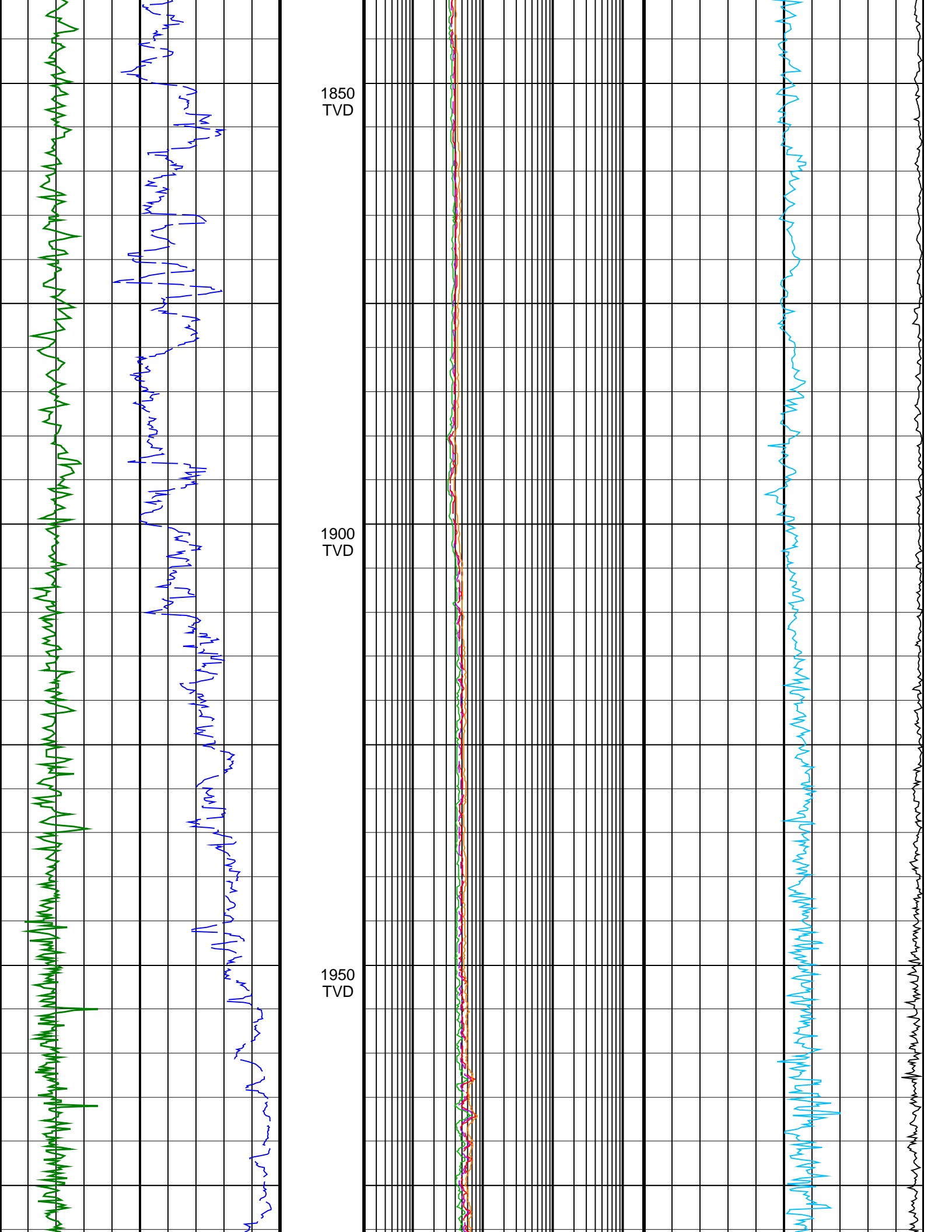
1600
TVD

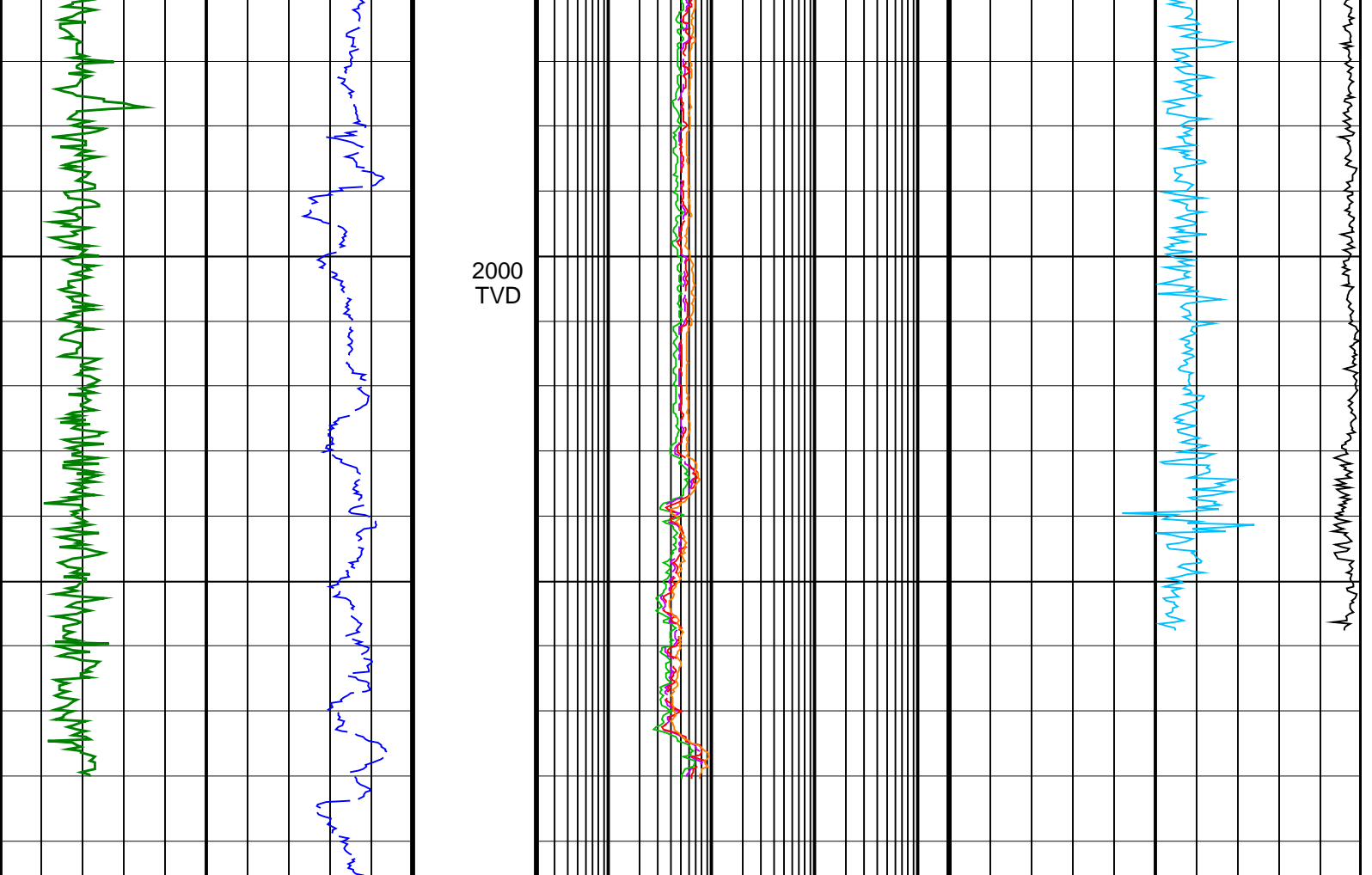
1650
TVD

1700









2000
TVD

<p>ROP*5 (ROP5) (M/HR)</p> <p>200 0</p>	<p>ARC BHCORR Phase-Shift Resistivity 16-in. at 2 MHz, Real-Time (P16H_RT)</p> <p>0.2 (OHMM) 2000</p>	<p>Coherence at Compressional Peak, Real-Time (CHCO_RT)</p> <p>-4 (----) 1</p>
<p>ARC Gamma Ray, Real-Time (ARC_GR_RT) (GAPI)</p> <p>0 200</p>	<p>ARC BHCORR Phase-Shift Resistivity 28-in. at 2 MHz, Real-Time (P28H_RT)</p> <p>0.2 (OHMM) 2000</p>	<p>Delta-T Compressional, Real-Time (DTCO_RT)</p> <p>140 (US/F) 40</p>
	<p>ARC BHCORR Phase-Shift Resistivity 40-in. at 2 MHz, Real-Time (P40H_RT)</p> <p>0.2 (OHMM) 2000</p>	
	<p>ARC BHCORR Attenuation Resistivity 40-in. at 2 MHz, Real-Time (A40H_RT)</p> <p>0.2 (OHMM) 2000</p>	