

Elver-1_VISION Resistivity RT 500MD

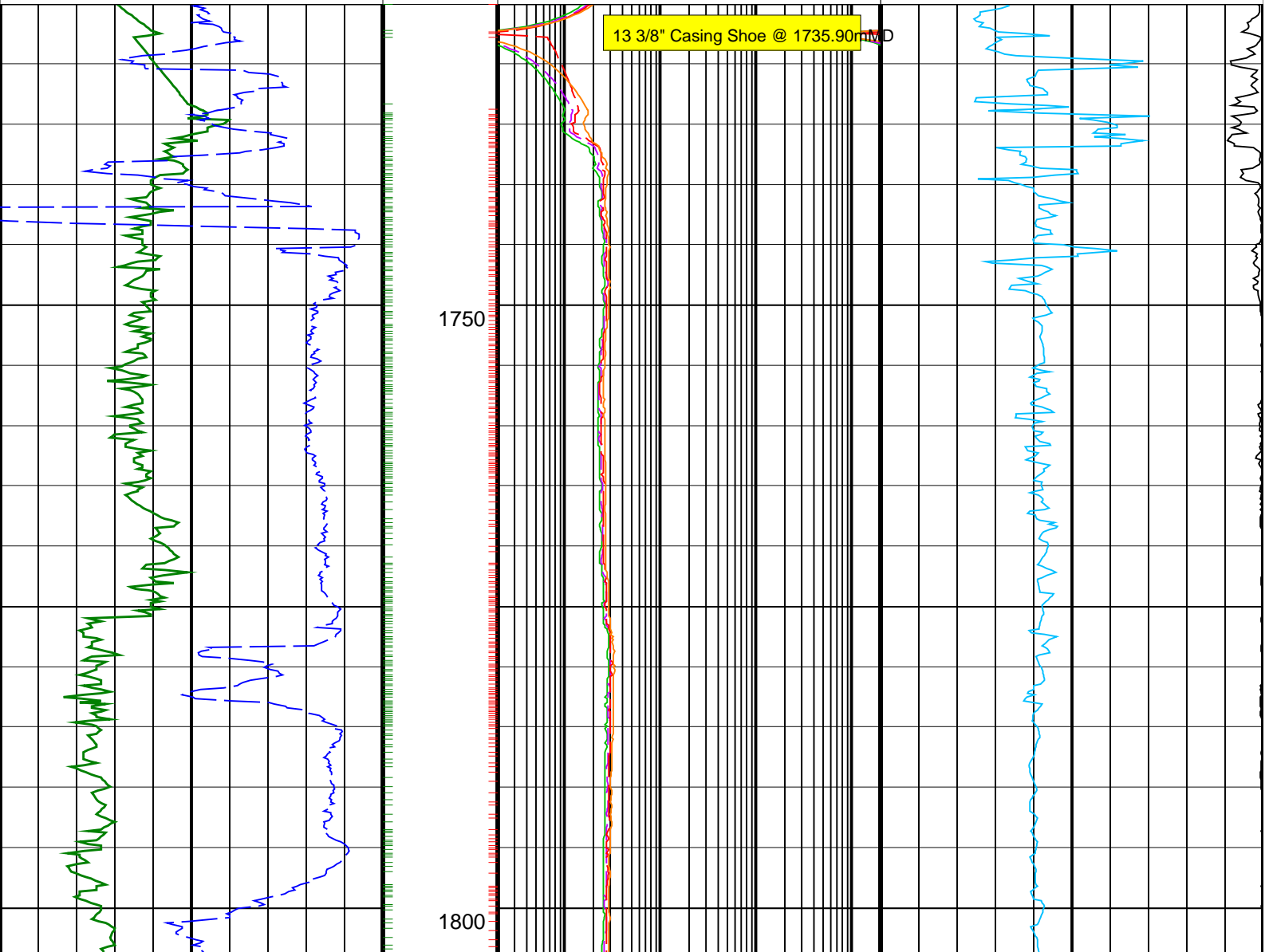
IDEAL Version: ID13_OC_08 <MD> Vertical Scale: 1:500

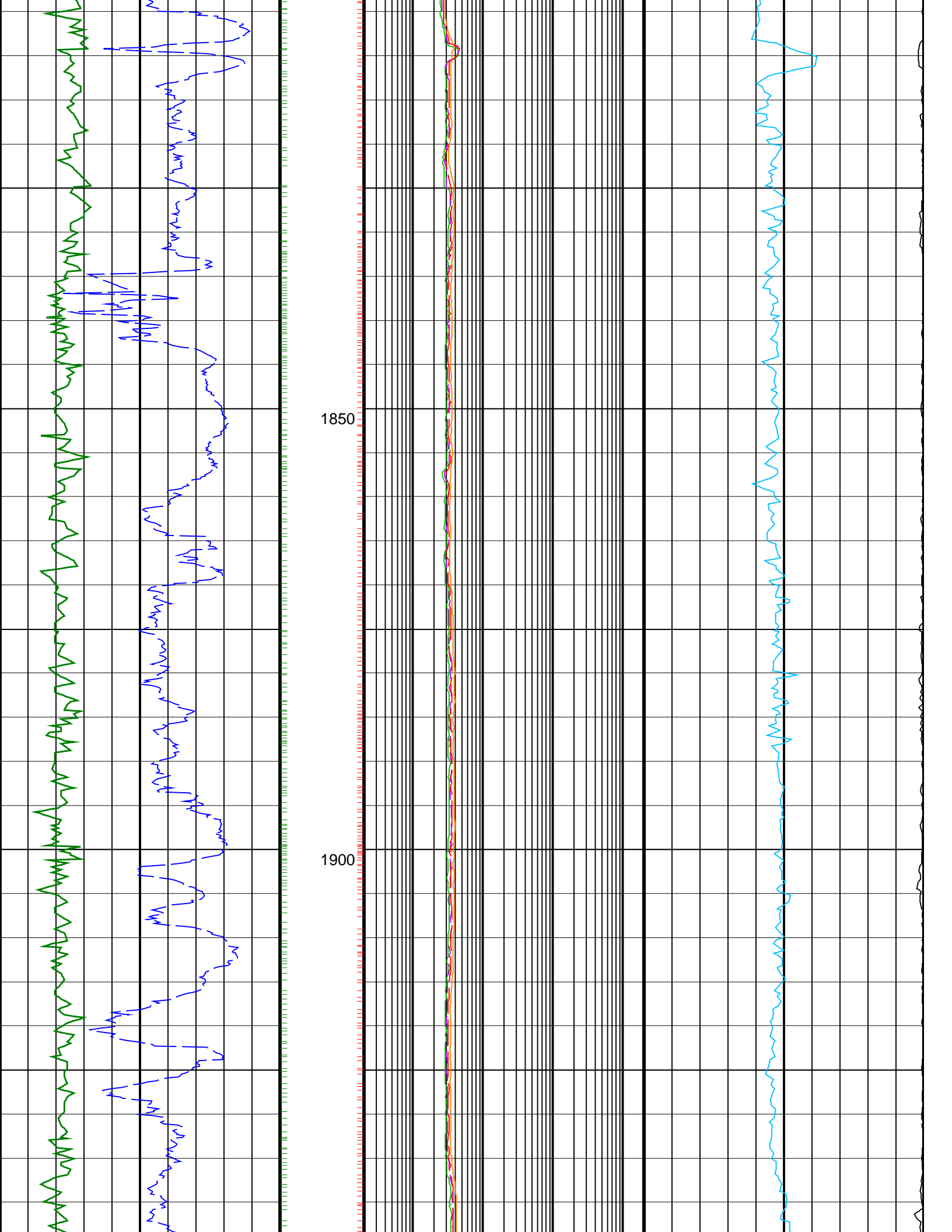
Graphics File Created: 28-Dec-2008 08:09

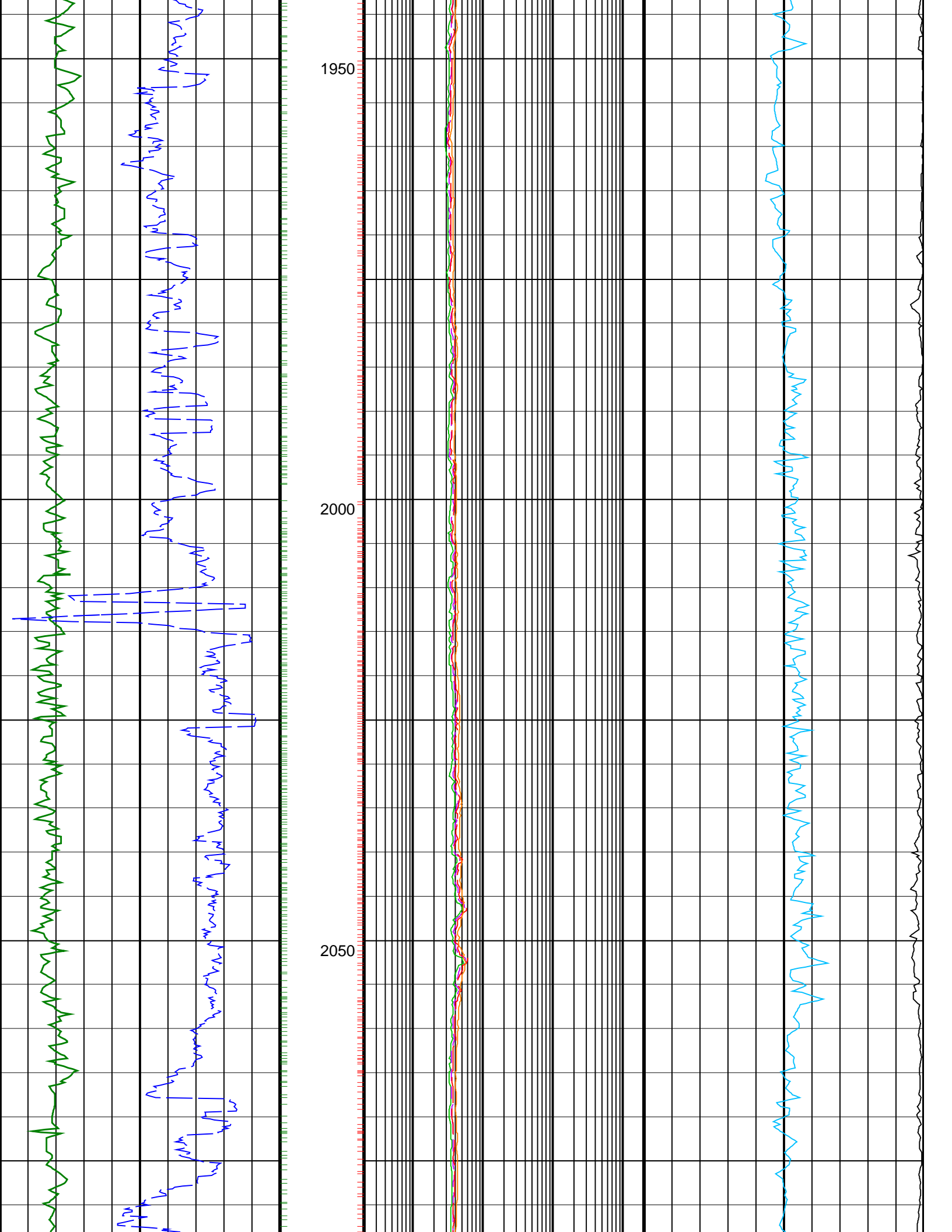
PIP SUMMARY

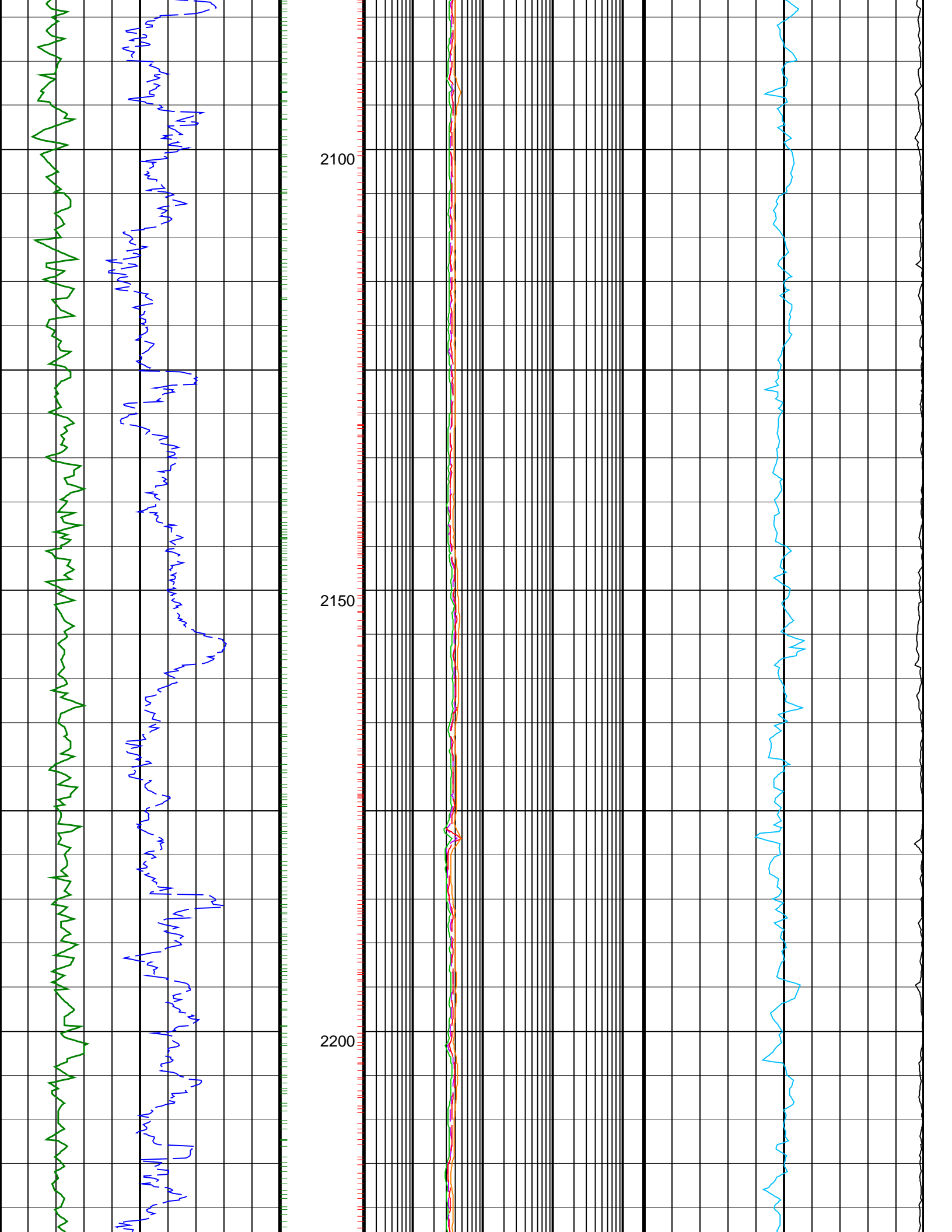
- └ ARC GRAPP PIP
- └ IMP RP16 PIP

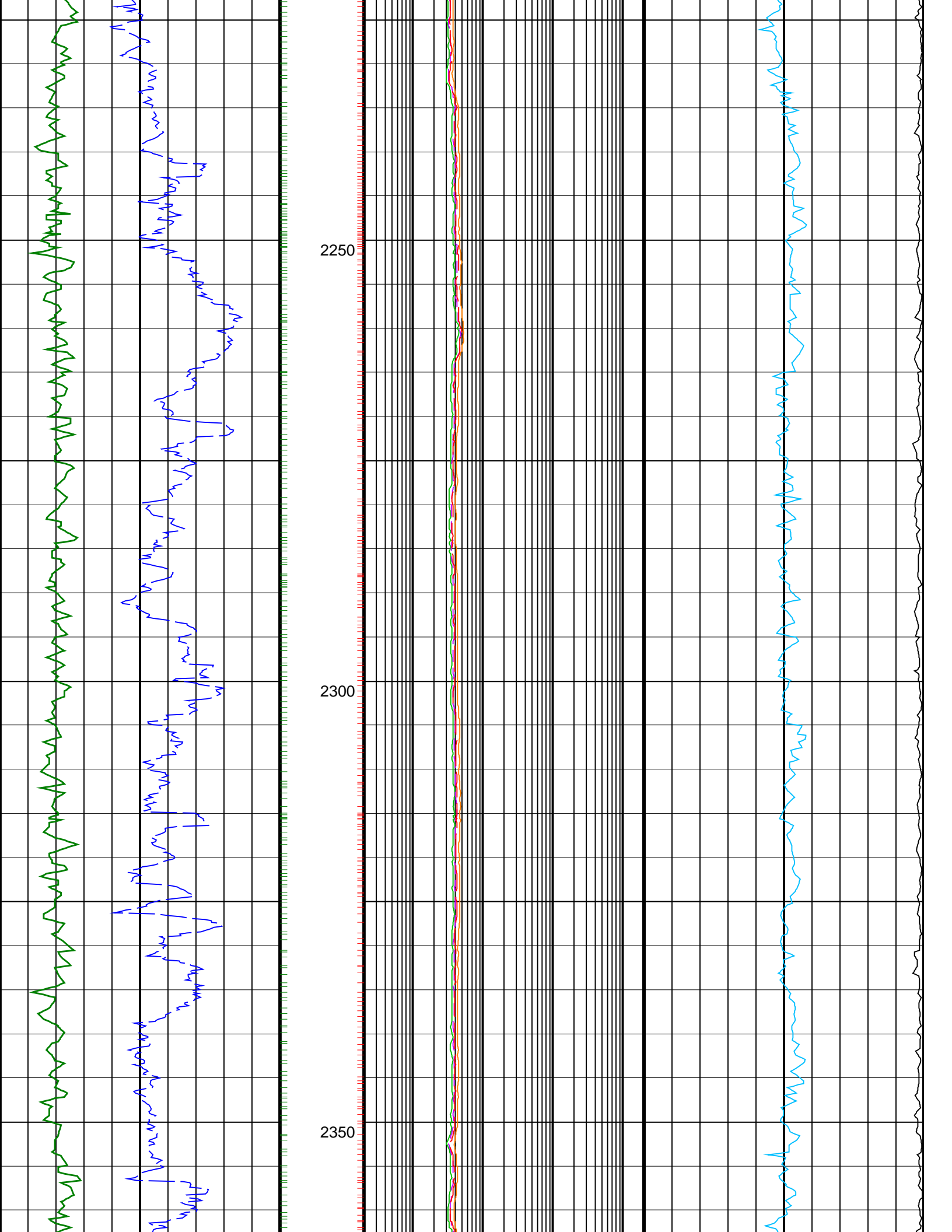
	ARC BHCorr Attenuation Resistivity 40-in. at 2 MHz, Real-Time (A40H_RT)				
	0.2	(OHMM)	2000		
	ARC BHCorr Phase-Shift Resistivity 40-in. at 2 MHz, Real-Time (P40H_RT)				
	0.2	(OHMM)	2000		
ARC Gamma Ray, Real-Time (ARC_GR_RT) (GAPI)	ARC BHCorr Phase-Shift Resistivity 28-in. at 2 MHz, Real-Time (P28H_RT)			Delta-T Compressional, Real-Time (DTCO_RT)	
0	200		0.2	(OHMM)	2000
			140	(US/F)	40
ROP*5 (ROP5) (M/HR)	ARC BHCorr Phase-Shift Resistivity 16-in. at 2 MHz, Real-Time (P16H_RT)			Coherence at Compressional Peak, Real-Time (CHCO_RT)	
200	0		0.2	(OHMM)	2000
			-4	(----	1

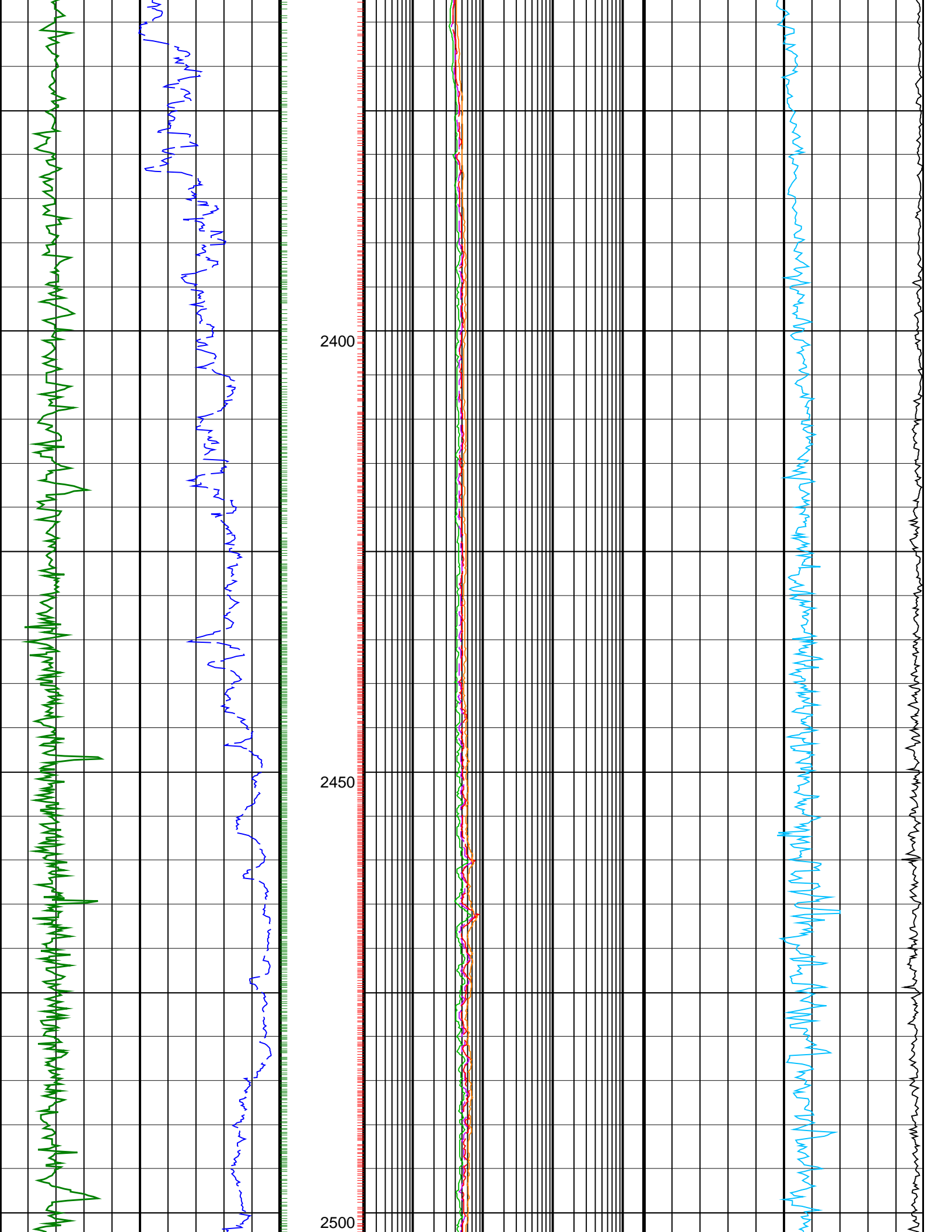


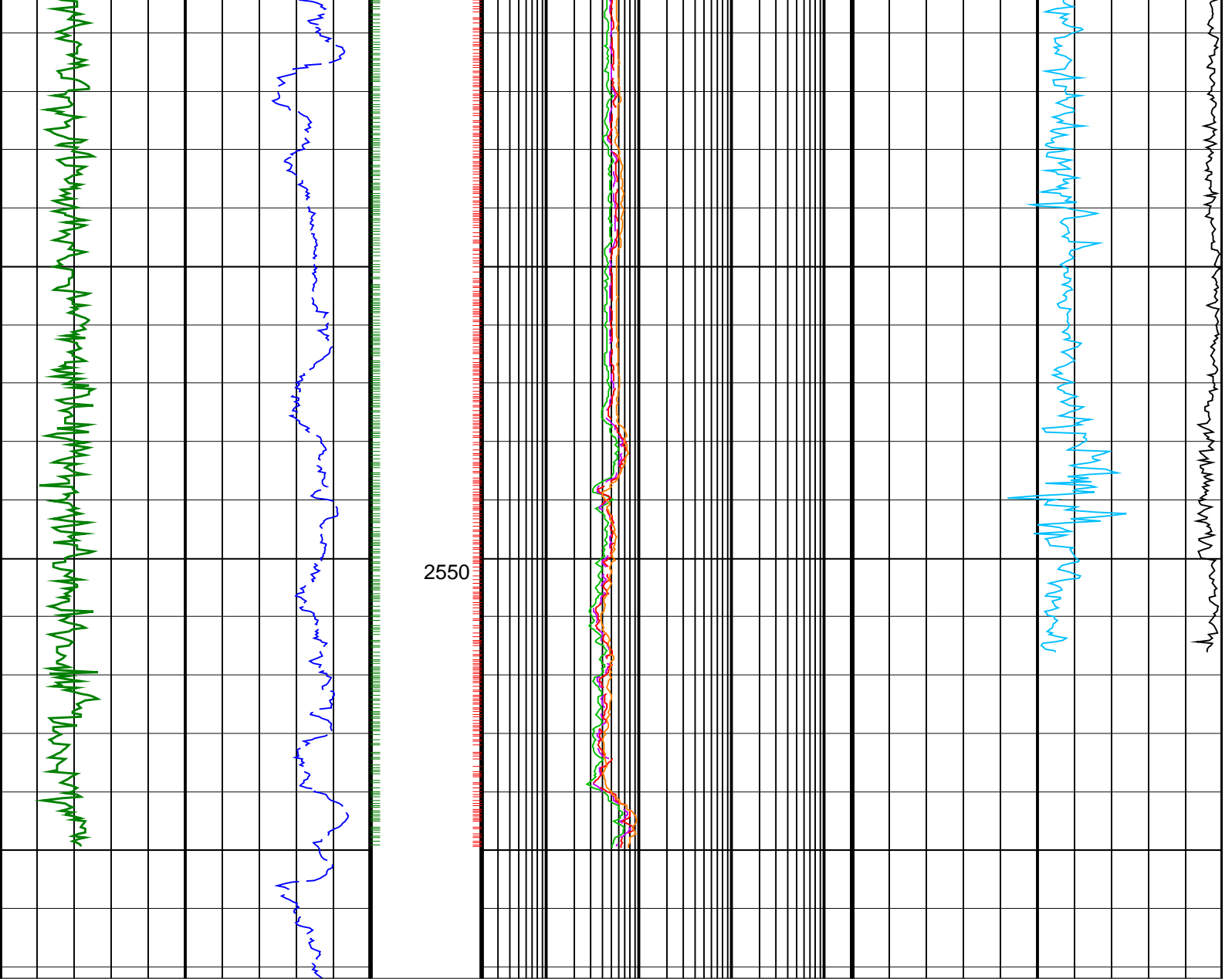












<u>ROP*5 (ROP5)</u>		
200	(M/HR)	0
<hr/>		
<u>ARC Gamma Ray, Real-Time (ARC_GR_RT)</u>		
0	(GAPI)	200

<u>ARC BHCorr Phase-Shift Resistivity</u> <u>16-in. at 2 MHz, Real-Time (P16H_RT)</u>		
0.2	(OHMM)	2000
<hr/>		
<u>ARC BHCorr Phase-Shift Resistivity</u> <u>28-in. at 2 MHz, Real-Time (P28H_RT)</u>		
0.2	(OHMM)	2000
<hr/>		
<u>ARC BHCorr Phase-Shift Resistivity</u> <u>40-in. at 2 MHz, Real-Time (P40H_RT)</u>		
0.2	(OHMM)	2000
<hr/>		
<u>ARC BHCorr Attenuation Resistivity</u> <u>40-in. at 2 MHz, Real-Time (A40H_RT)</u>		
0.2	(OHMM)	2000

<u>Coherence at Compressional Peak,</u> <u>Real-Time (CHCO_RT)</u>		
-4	(----	1
<hr/>		
<u>Delta-T Compressional, Real-Time</u> <u>(DTCO_RT)</u>		
140	(US/F)	40

PIP SUMMARY

- ┆ ARC GRAPP PIP
- ┆ IMP RP16 PIP