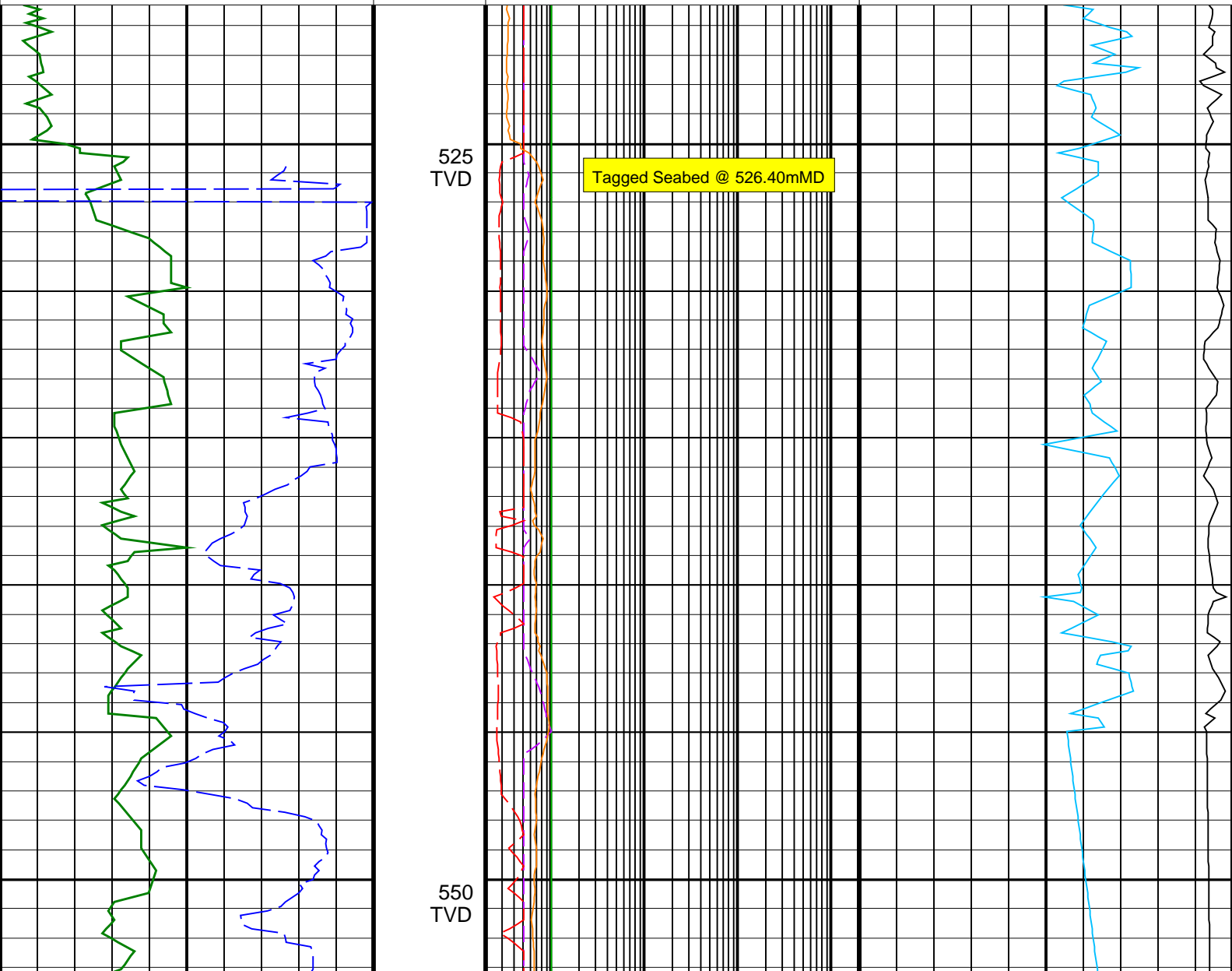
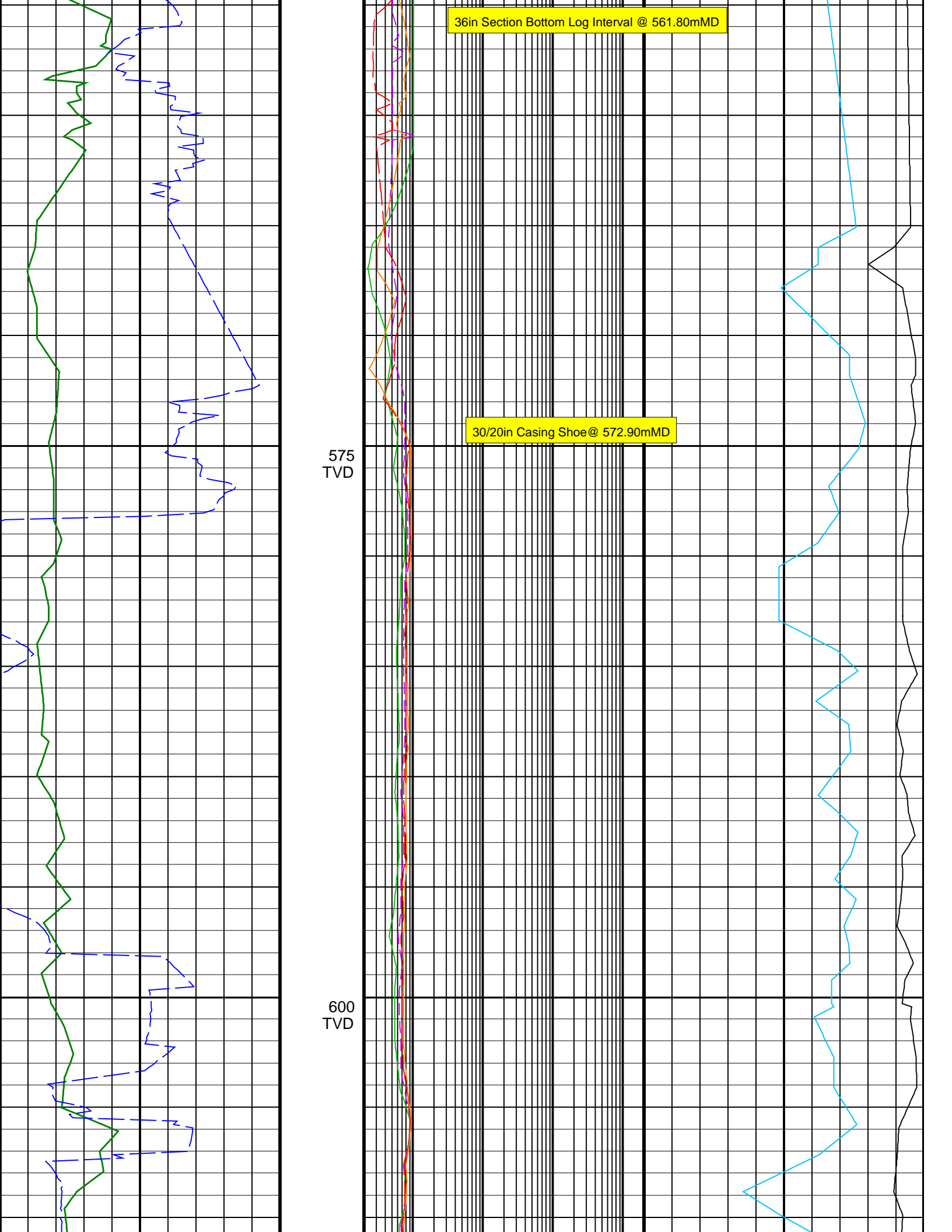


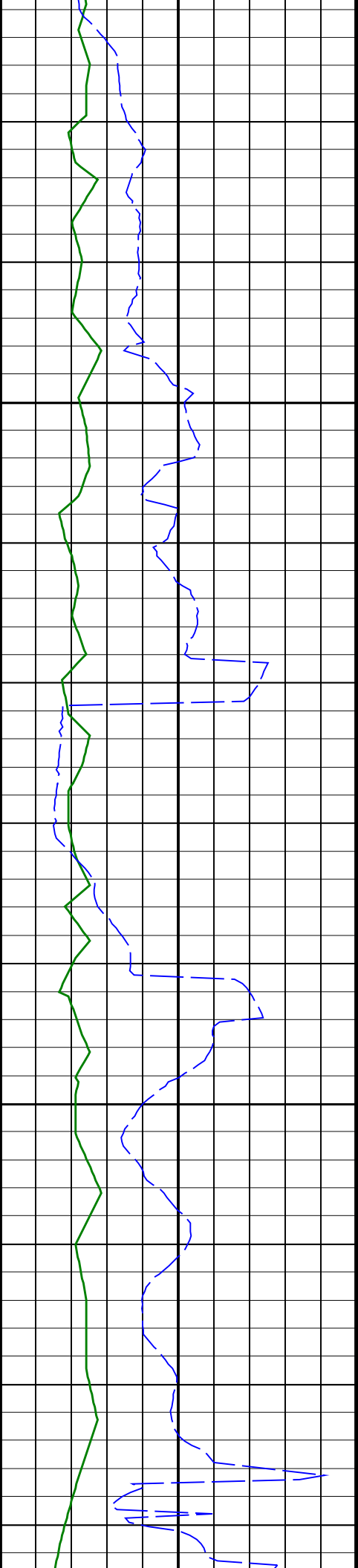
Elver-1_VISION Resistivity RT 200TVD

IDEAL Version: ID13_0C_08 <TVD> Vertical Scale: 1:200 Graphics File Created: 27-Dec-2008 08:26

	<p>ARC BHCorr Attenuation Resistivity <u>40-in. at 2 MHz, Real-Time (A40H_RT)</u> 0.2 (OHMM) 2000</p>	
<p>ARC Gamma Ray, Real-Time (ARC_GR_RT) 0 (GAPI) 200</p>	<p>ARC BHCorr Phase-Shift Resistivity <u>40-in. at 2 MHz, Real-Time (P40H_RT)</u> 0.2 (OHMM) 2000</p>	<p>Delta-T Compressional, Real-Time (DTCO_RT) 140 (US/F) 40</p>
<p>ROP*5 (ROP5) 200 (M/HR) 0</p>	<p>ARC BHCorr Phase-Shift Resistivity <u>28-in. at 2 MHz, Real-Time (P28H_RT)</u> 0.2 (OHMM) 2000</p>	<p>Coherence at Compressional Peak, Real-Time (CHCO_RT) -4 (----) 1</p>
	<p>ARC BHCorr Phase-Shift Resistivity <u>16-in. at 2 MHz, Real-Time (P16H_RT)</u> 0.2 (OHMM) 2000</p>	

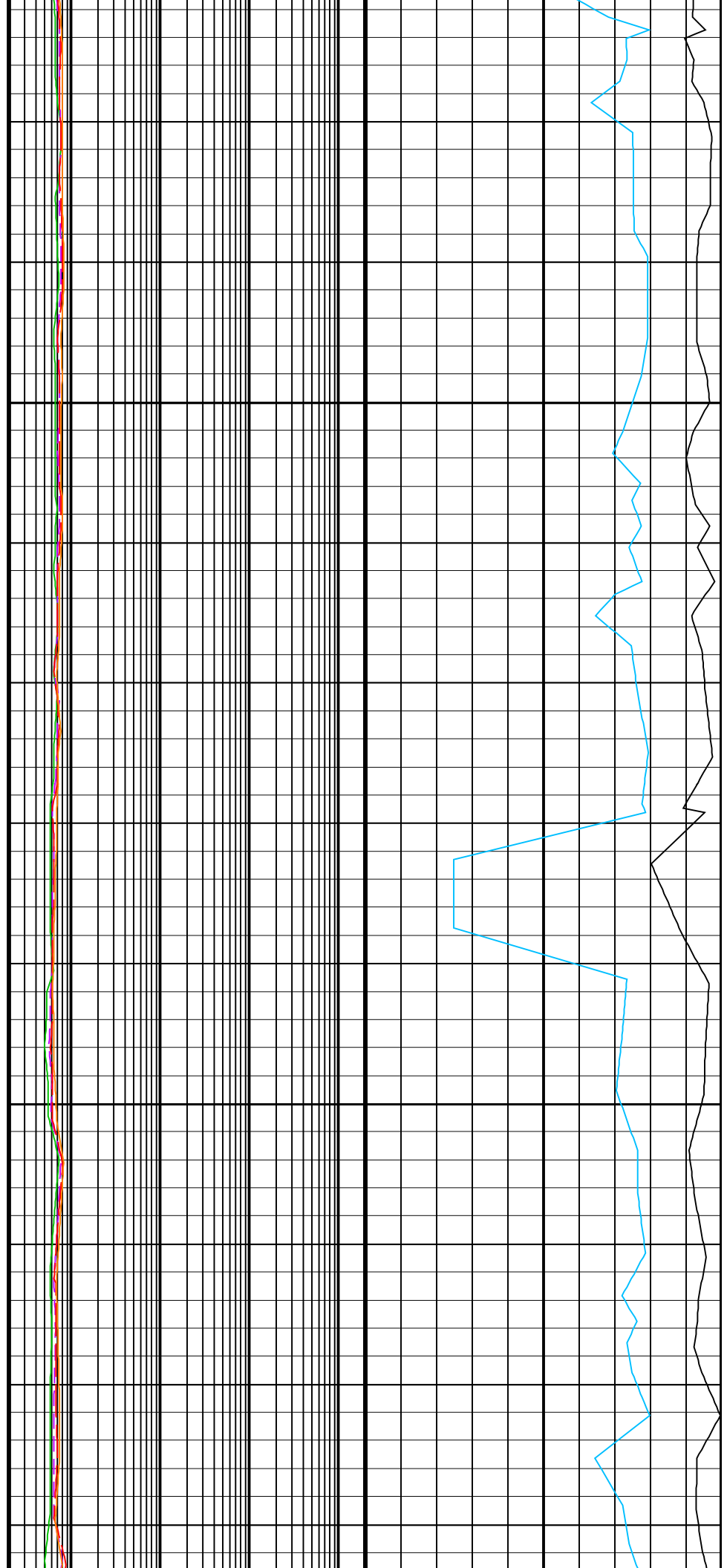


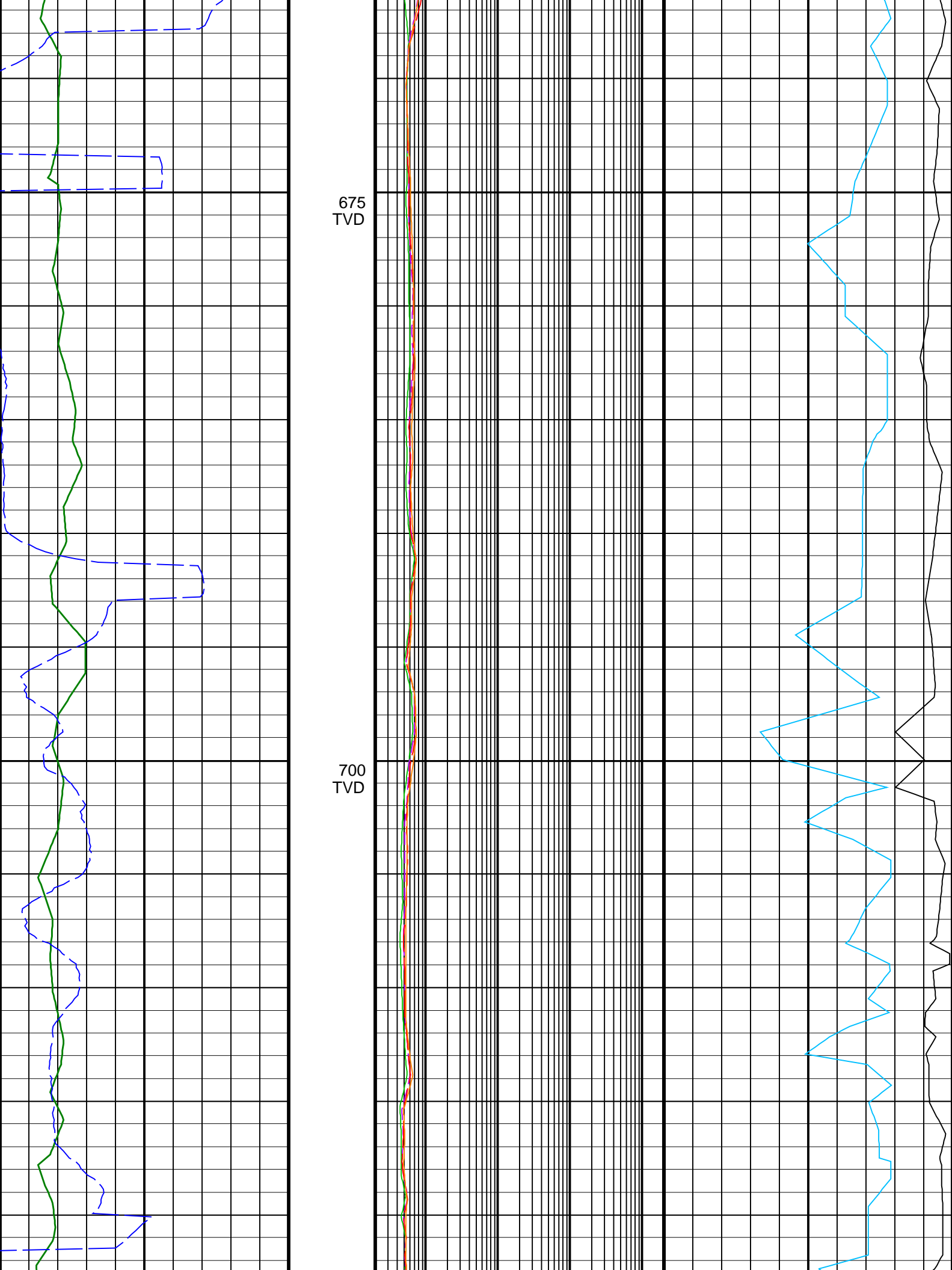


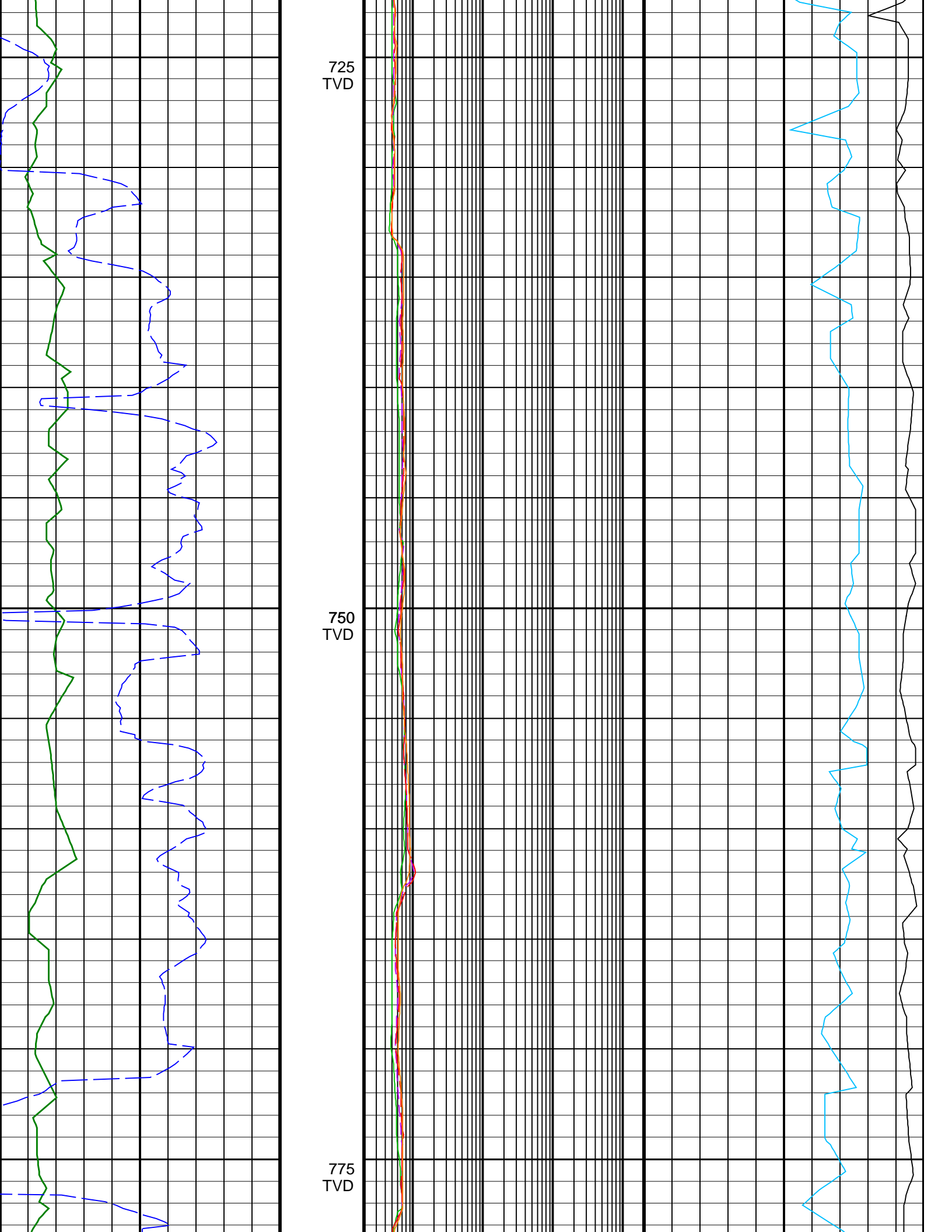


625
TVD

650
TVD



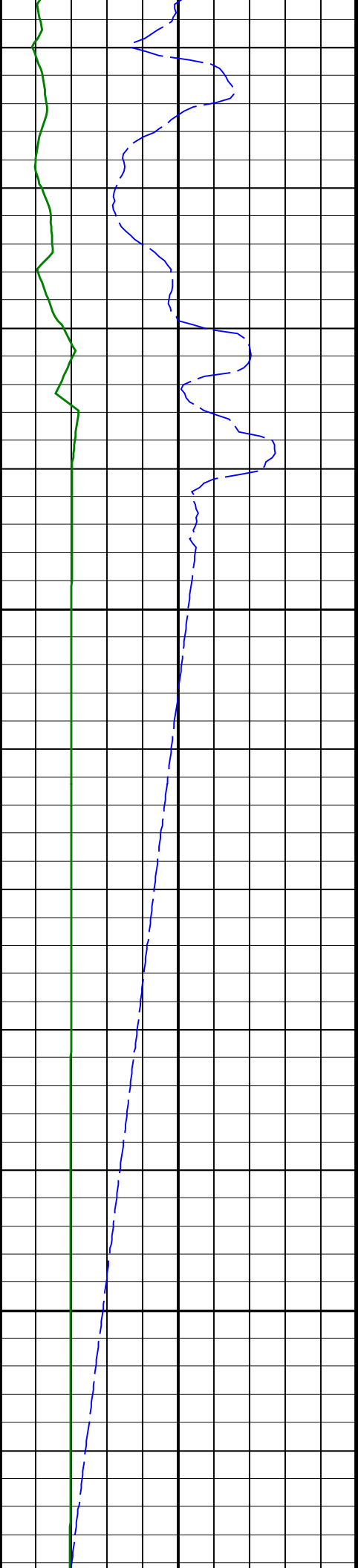




725
TVD

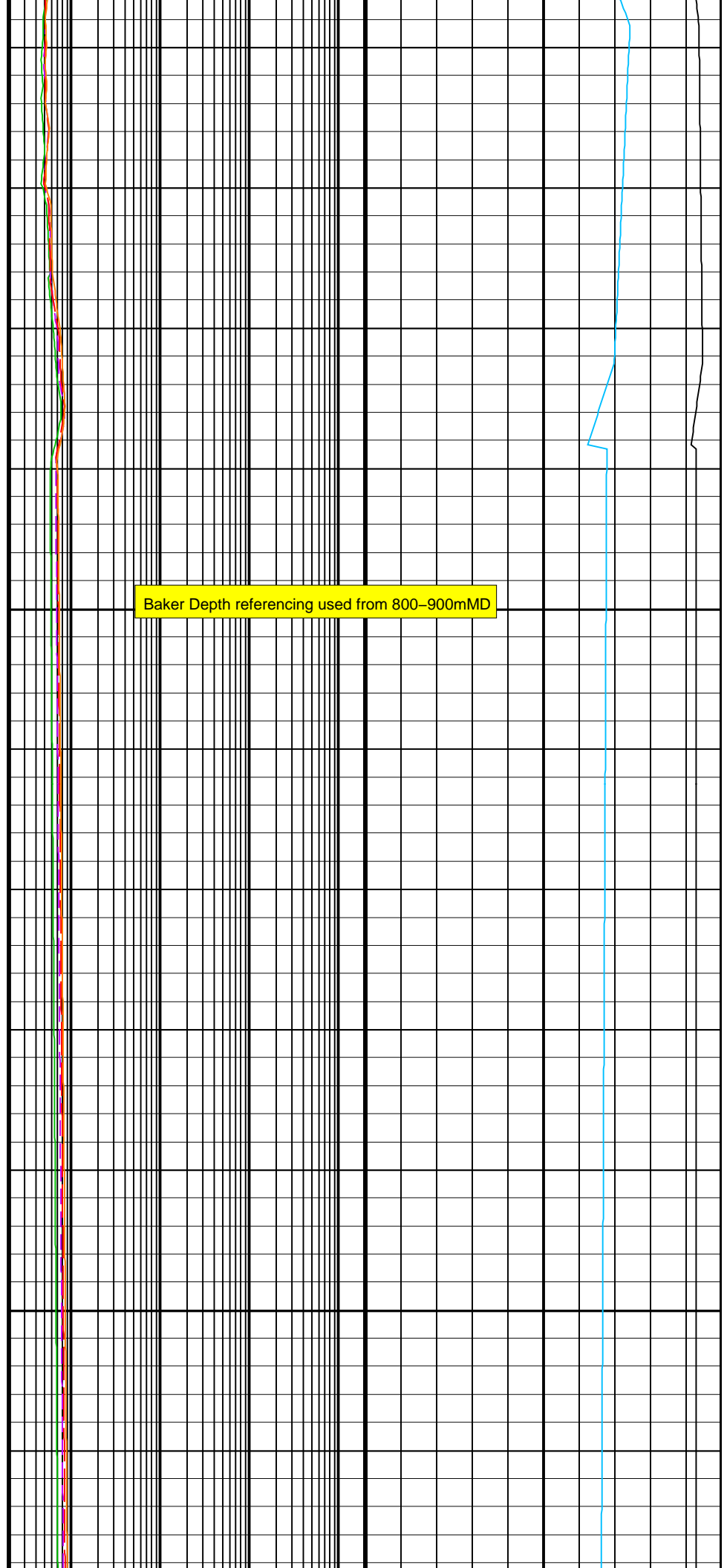
750
TVD

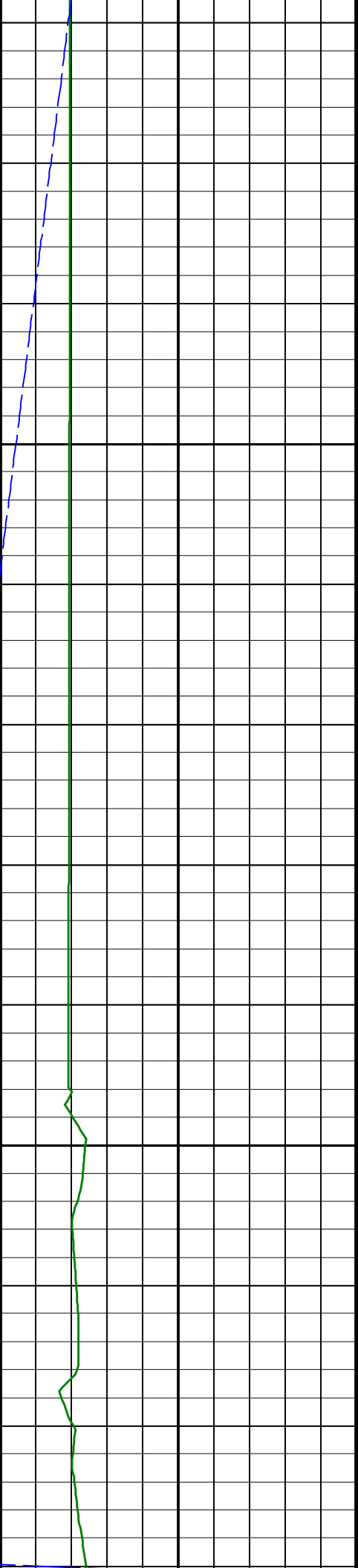
775
TVD



800
TVD

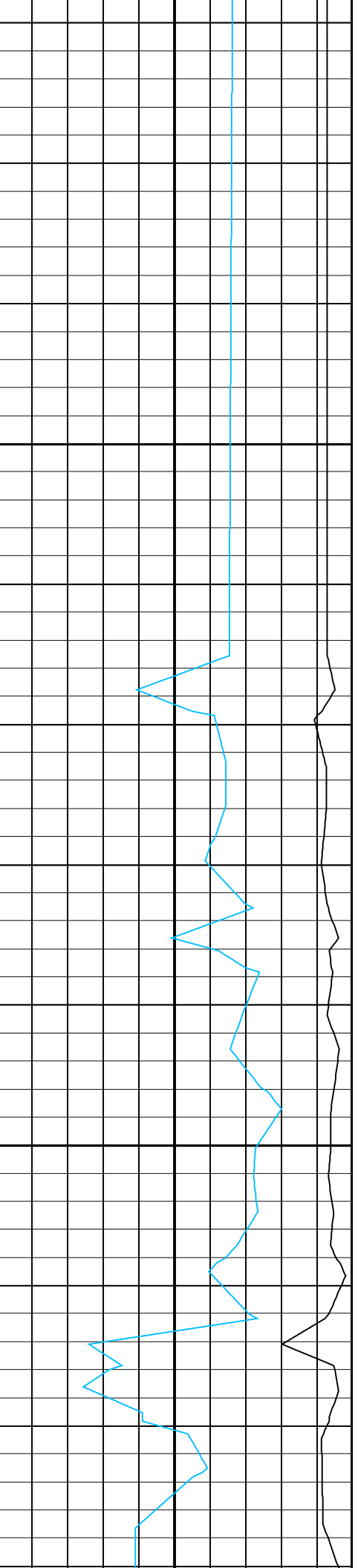
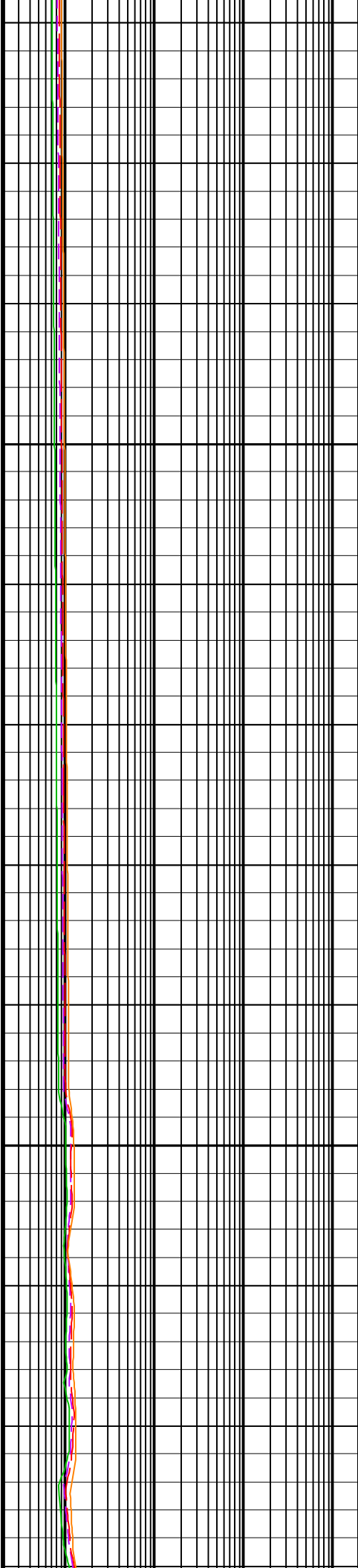
825
TVD

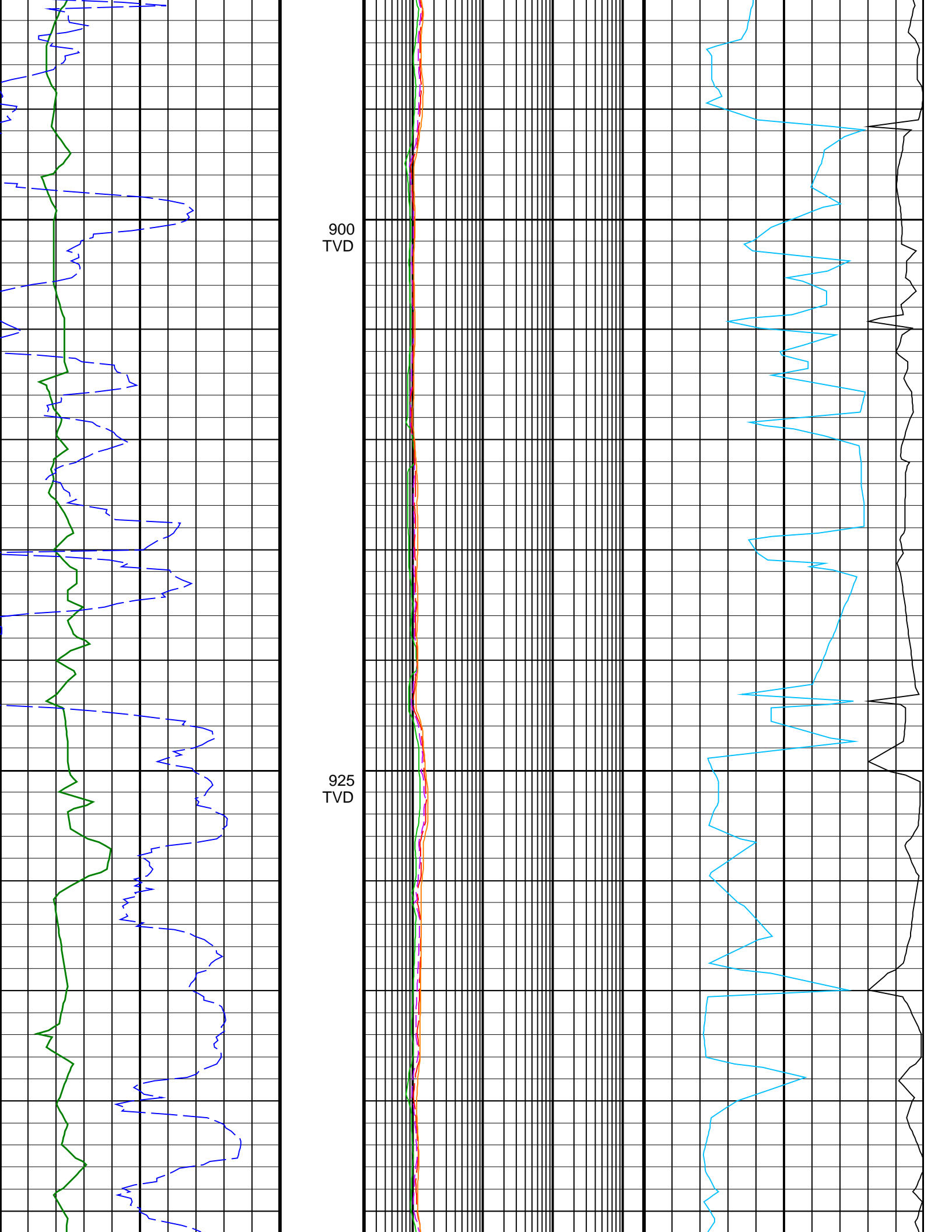


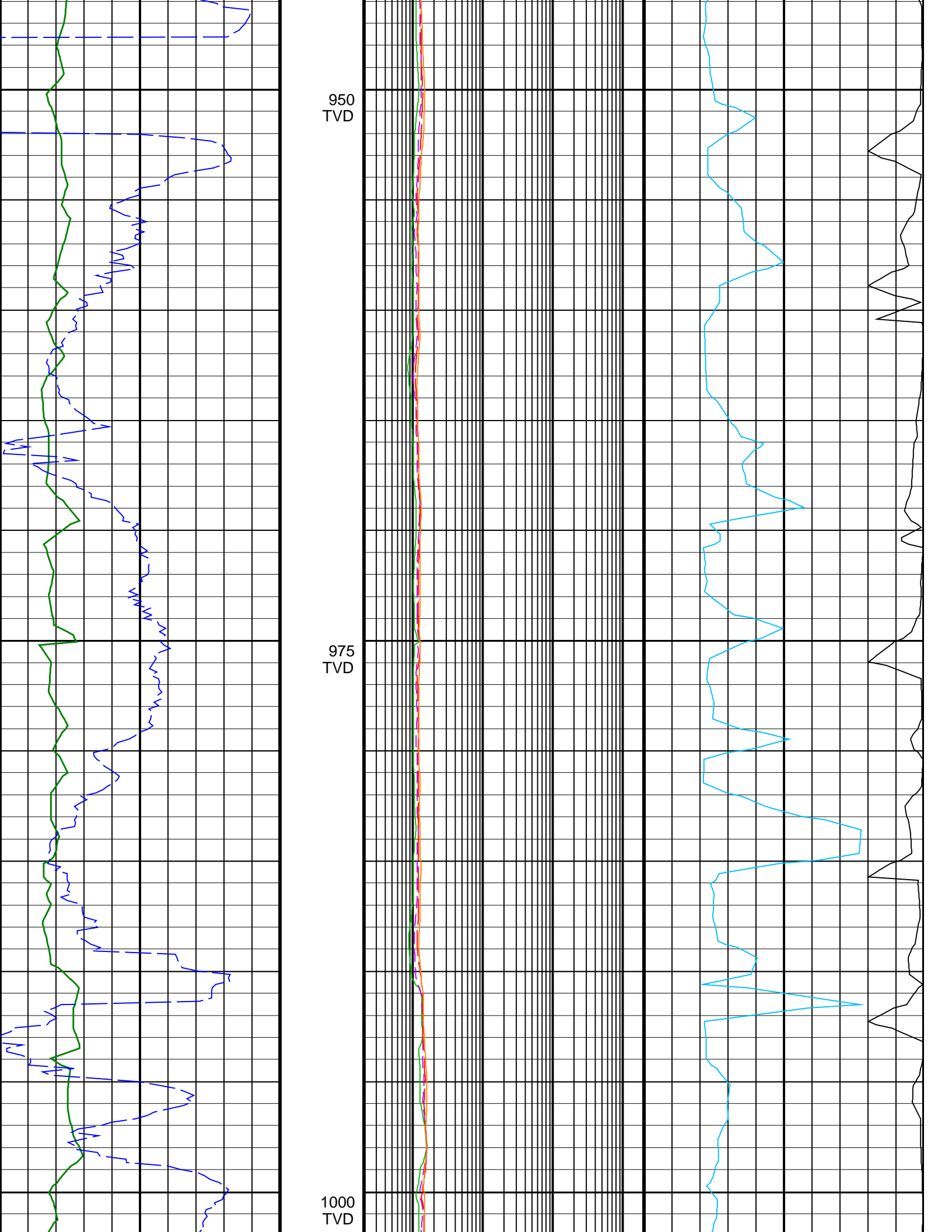


850
TVD

875
TVD



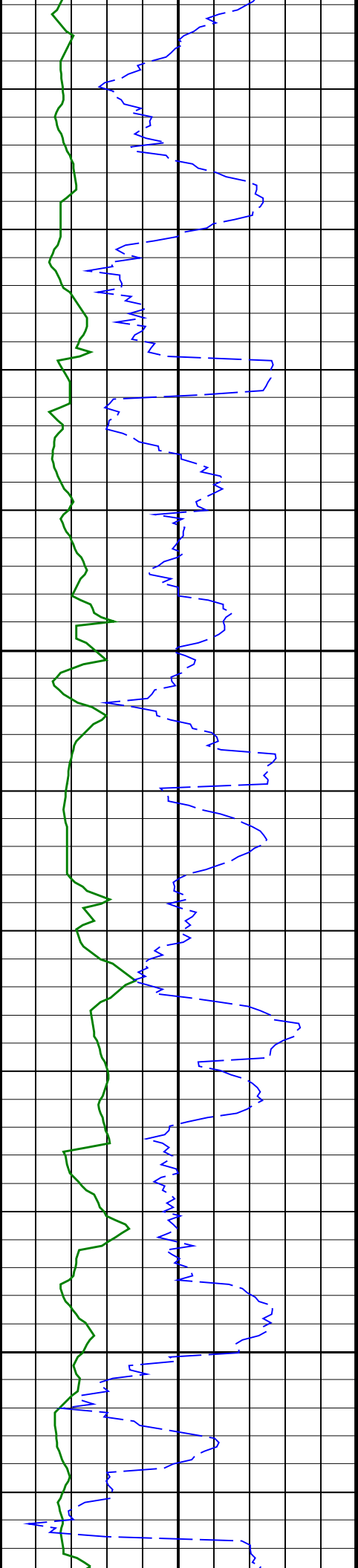




950
TVD

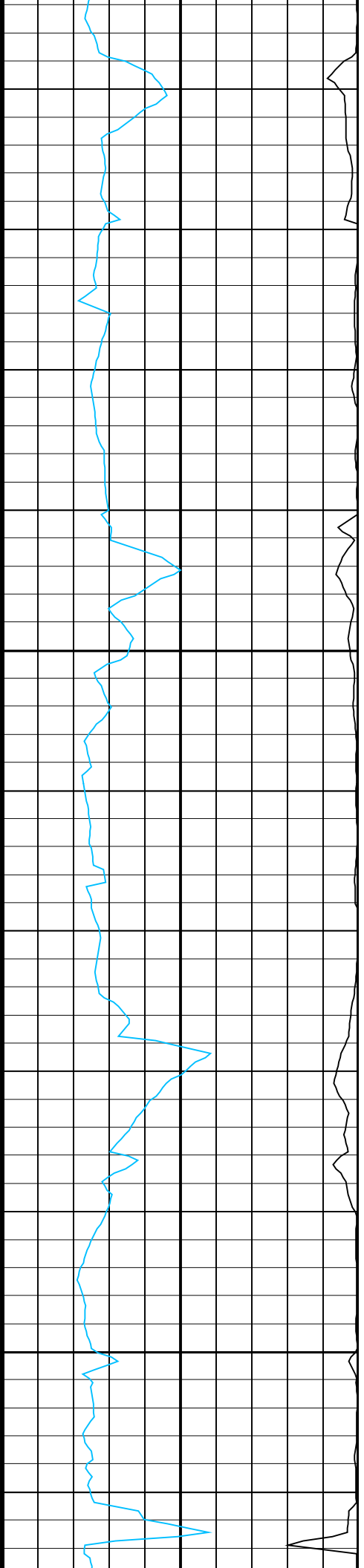
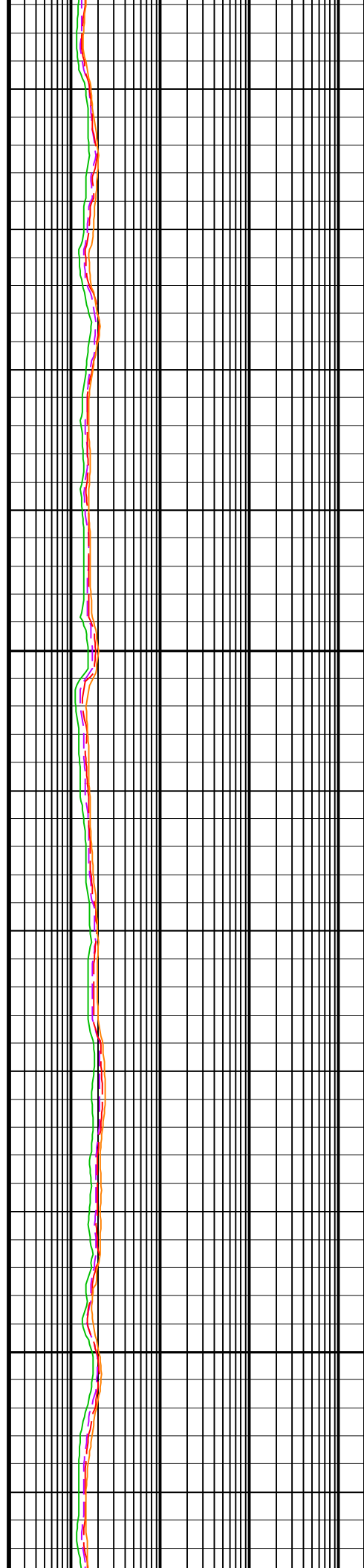
975
TVD

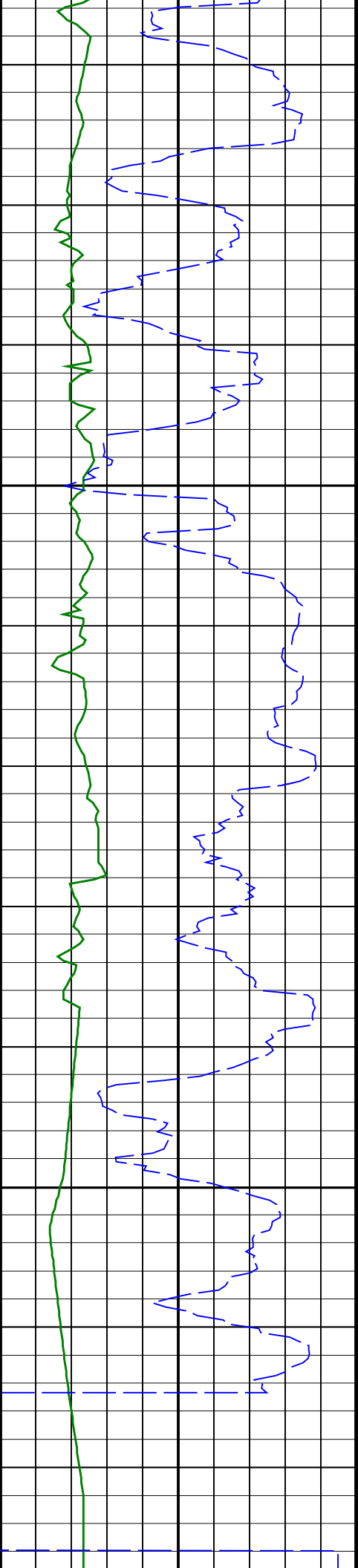
1000
TVD



1025
TVD

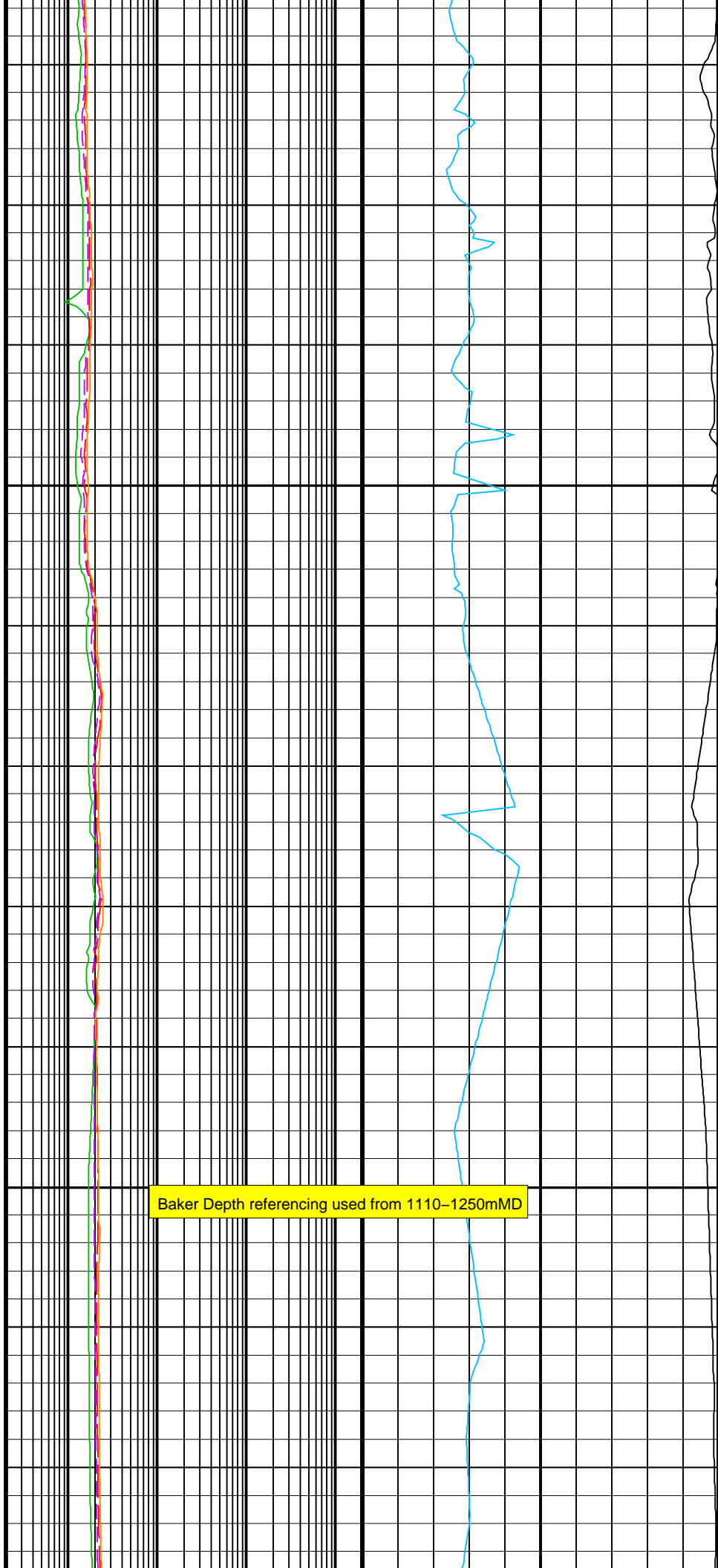
1050
TVD



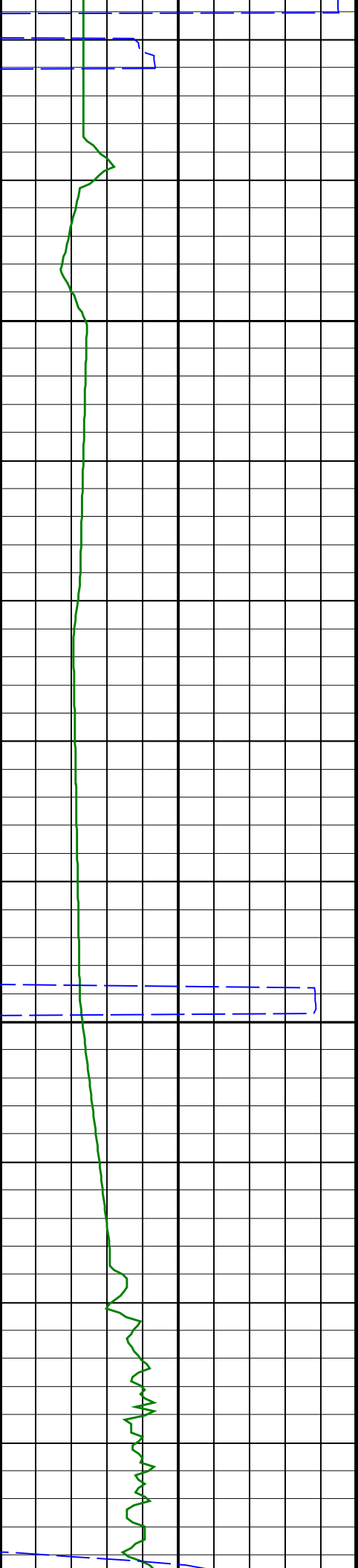


1075
TVD

1100
TVD

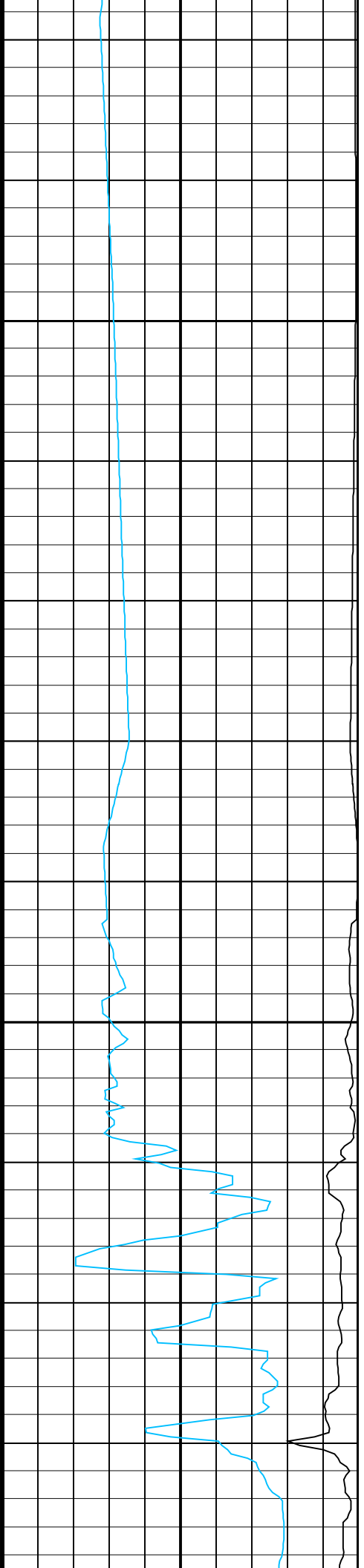
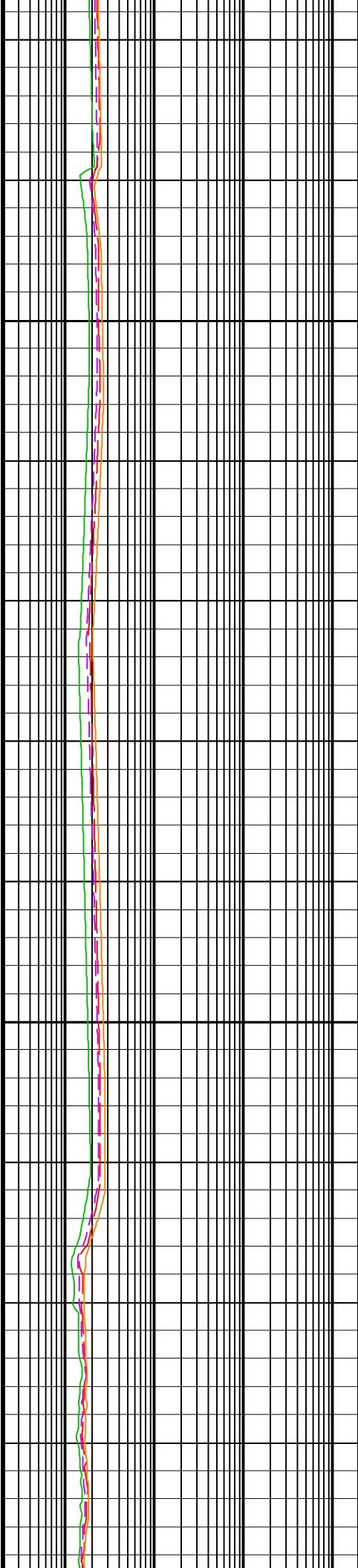


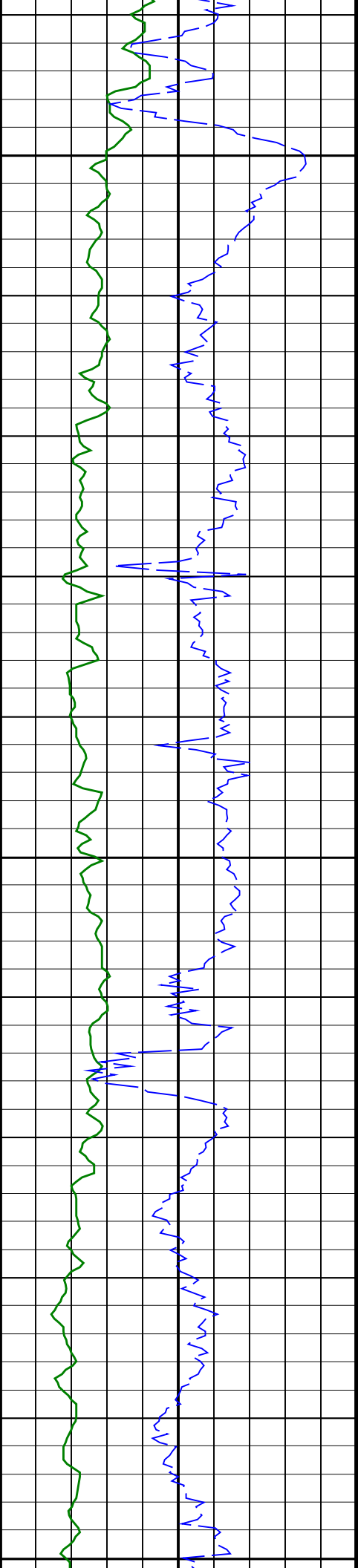
Baker Depth referencing used from 1110–1250mMD



1125
TVD

1150
TVD

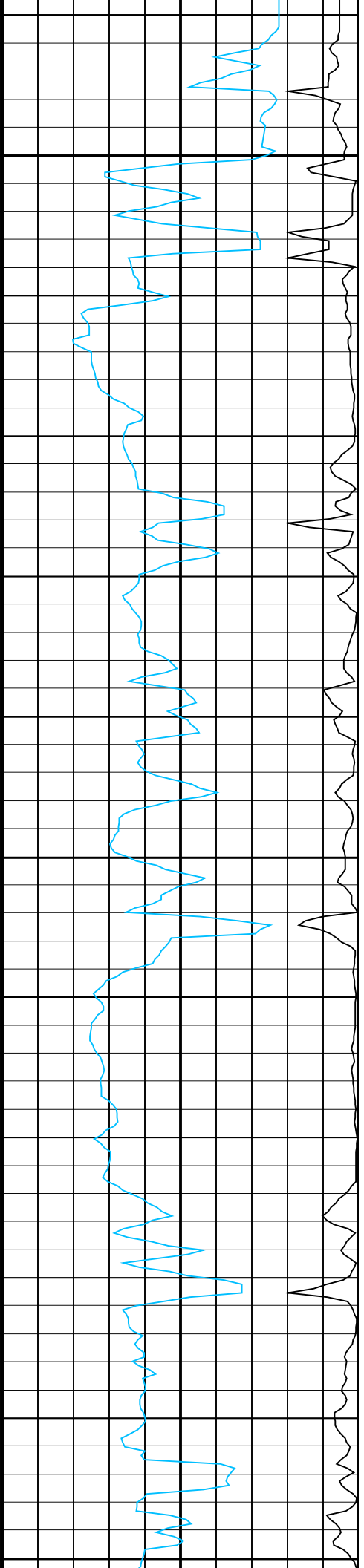
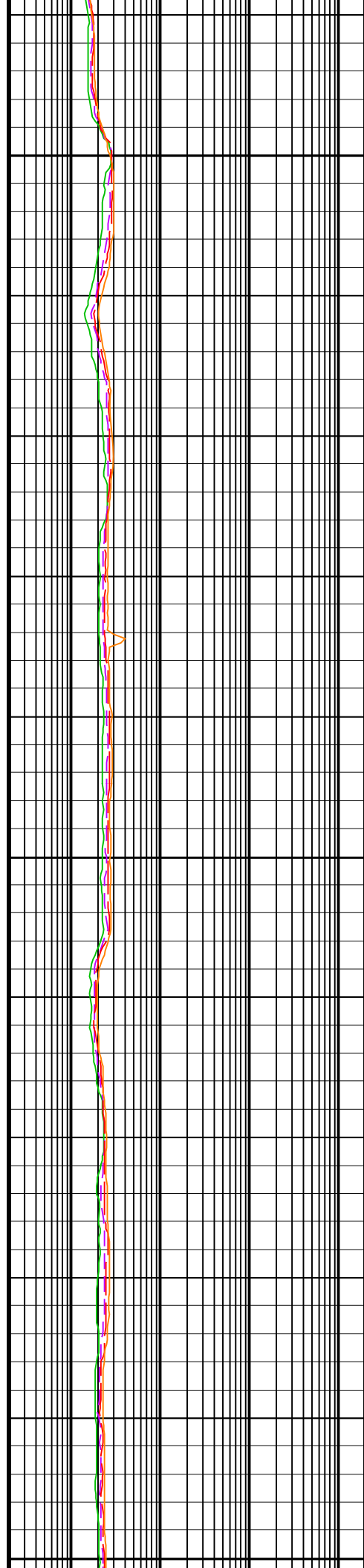


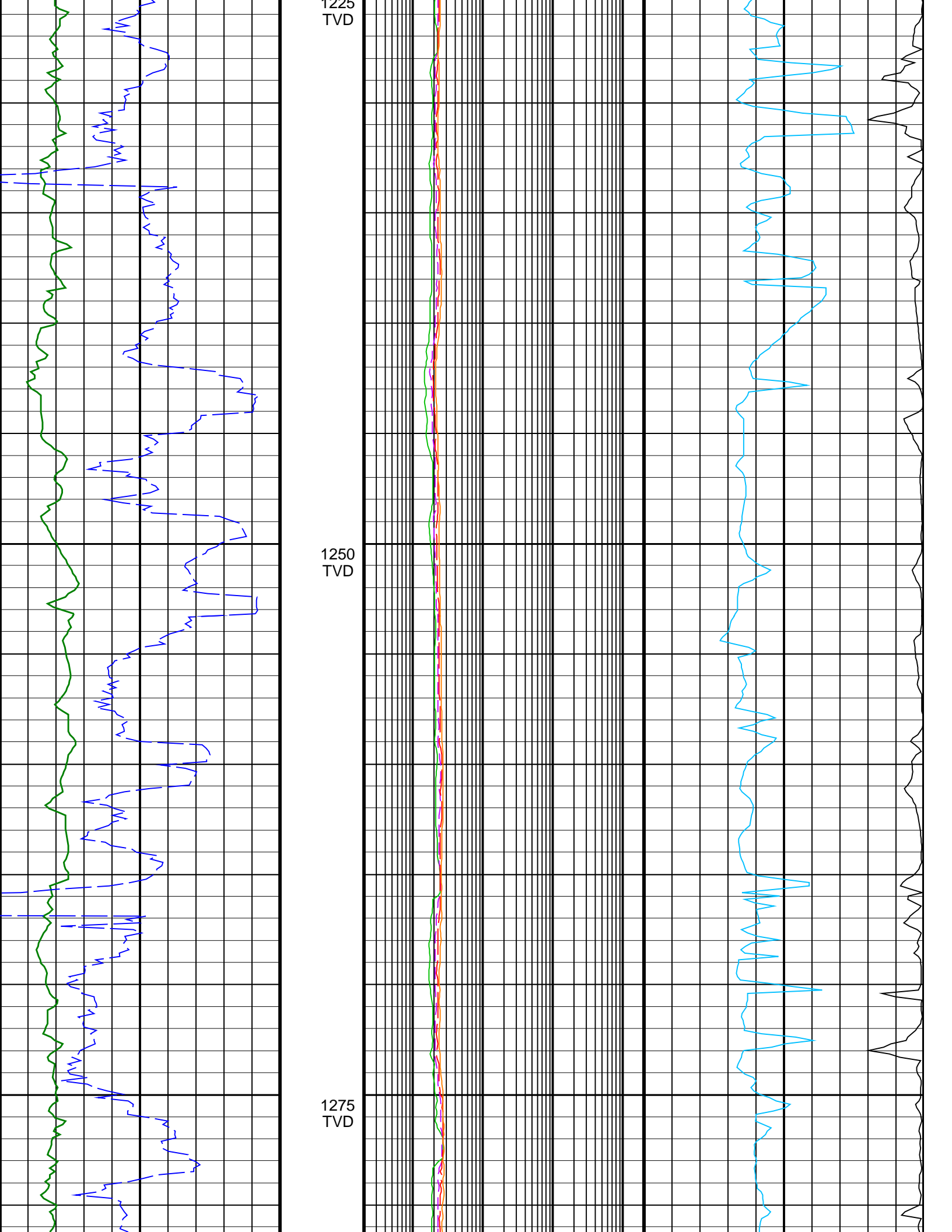


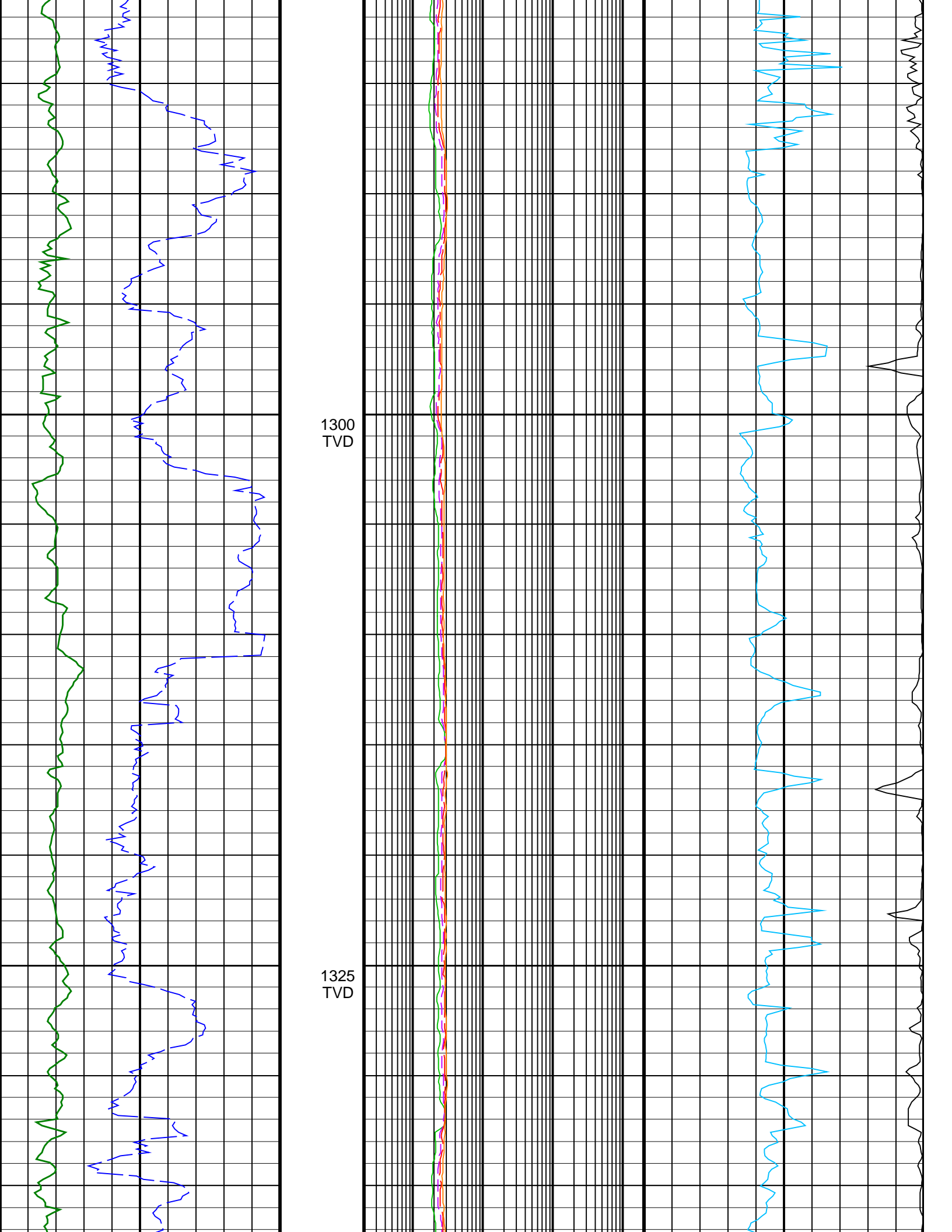
1175
TVD

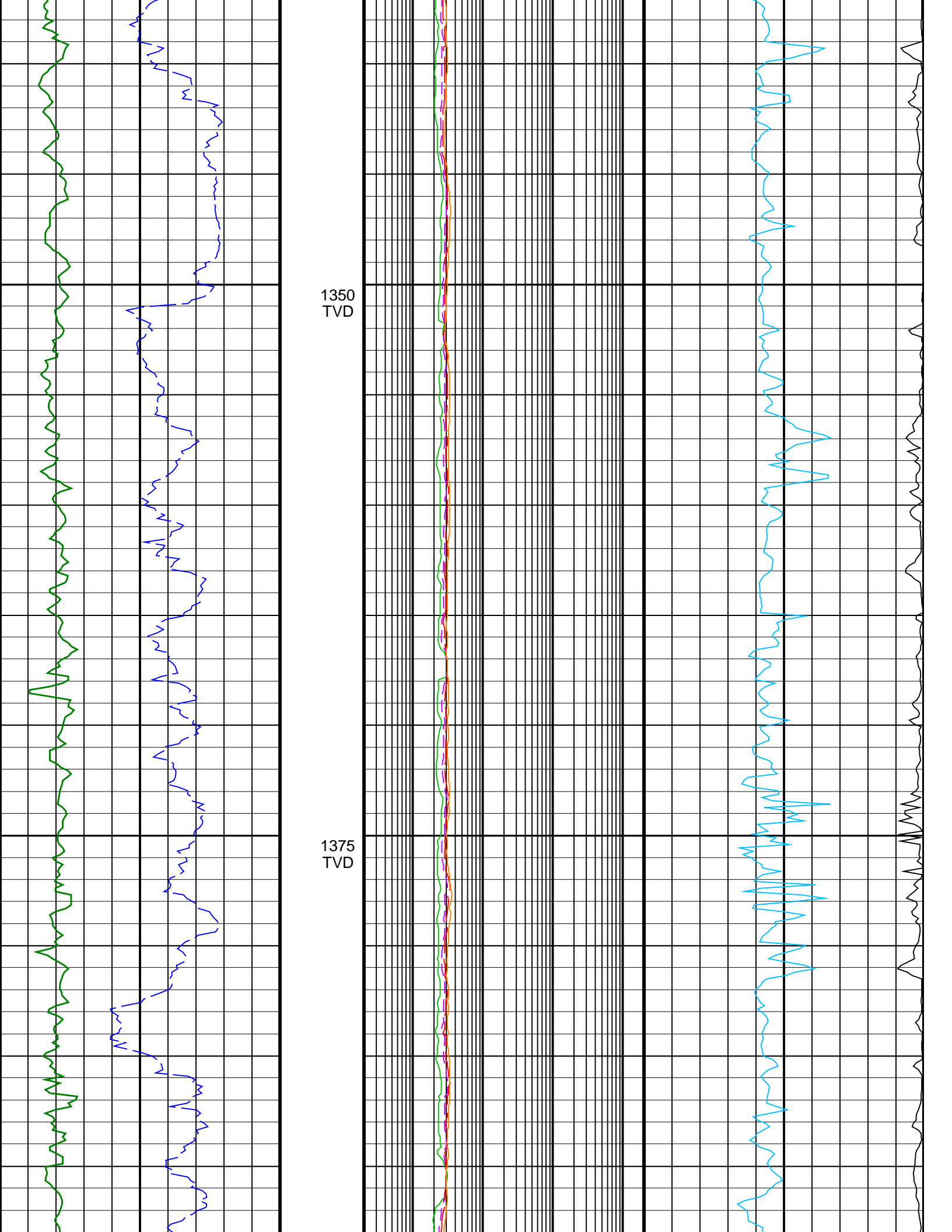
1200
TVD

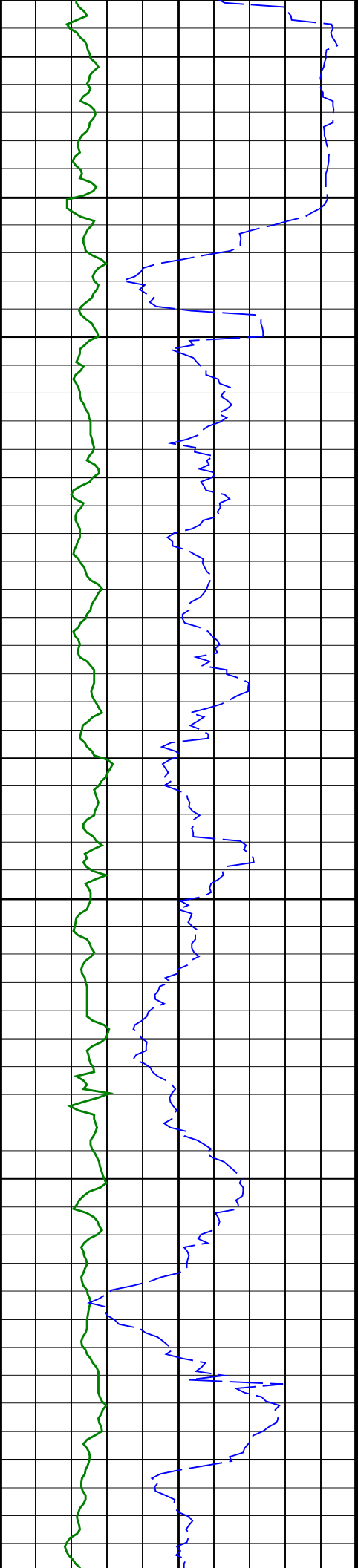
1225





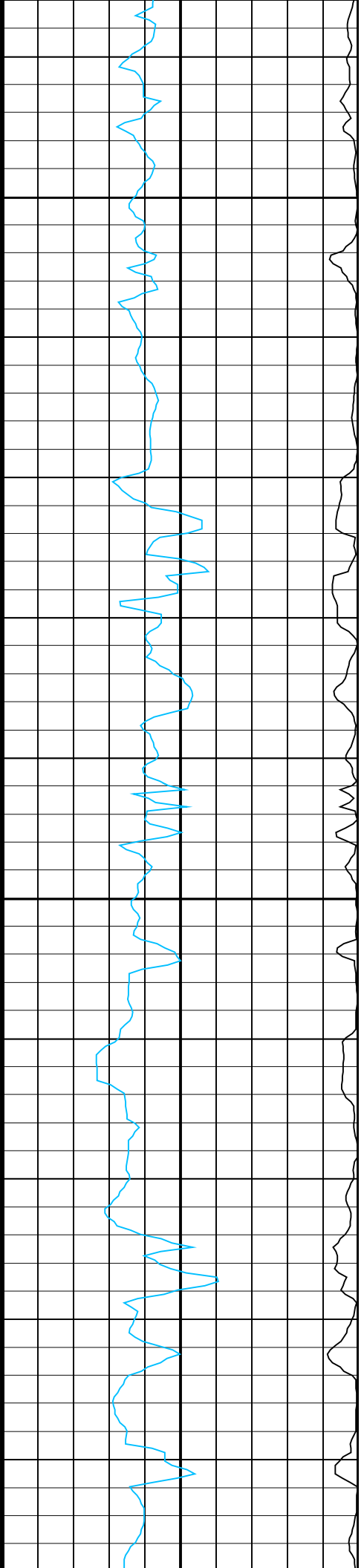
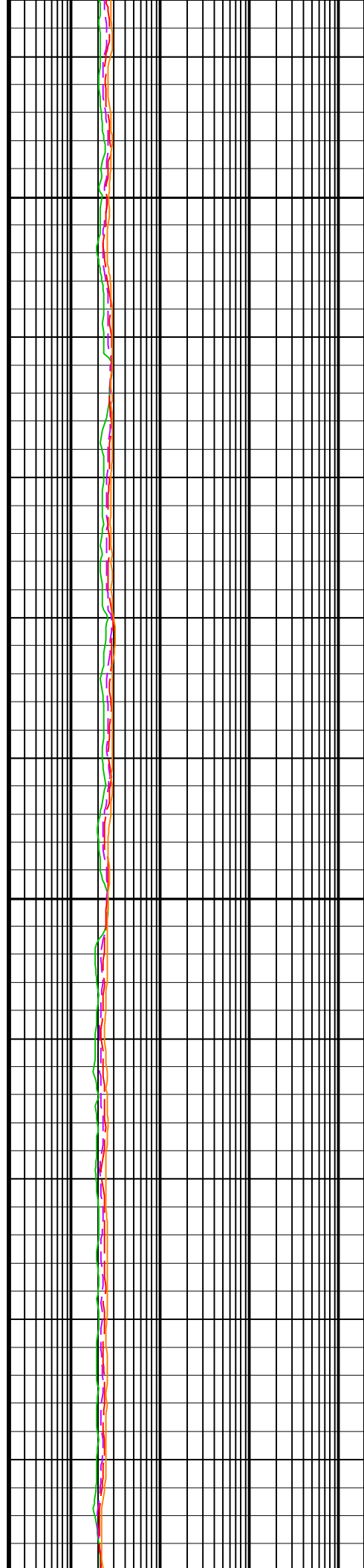


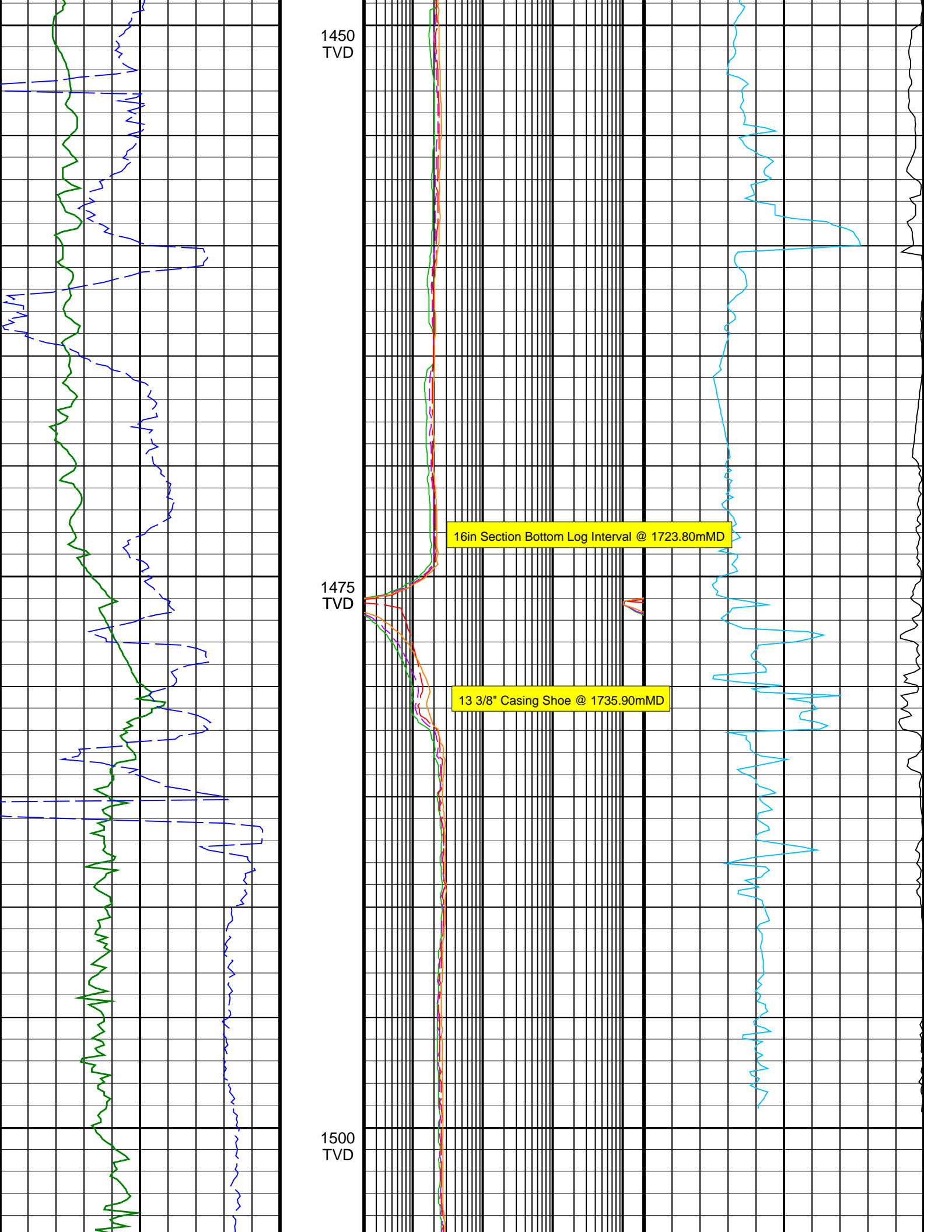




1400
TVD

1425
TVD





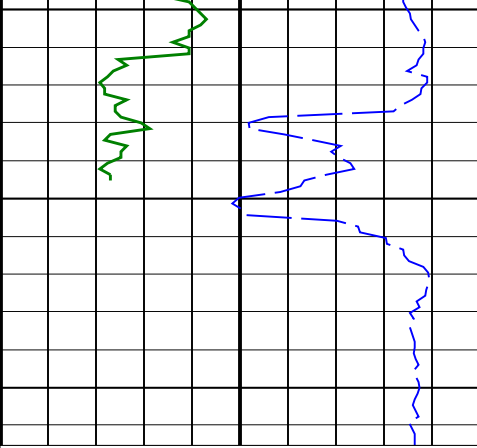
1450
TVD

1475
TVD

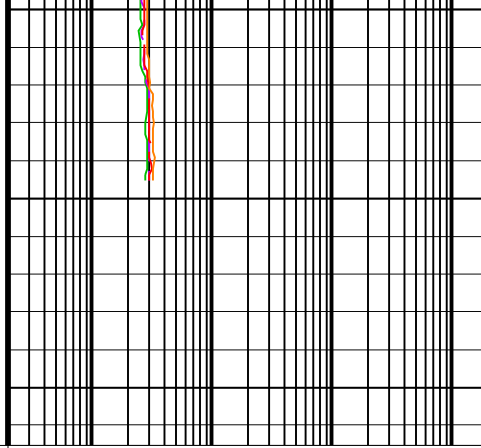
1500
TVD

16in Section Bottom Log Interval @ 1723.80mMD

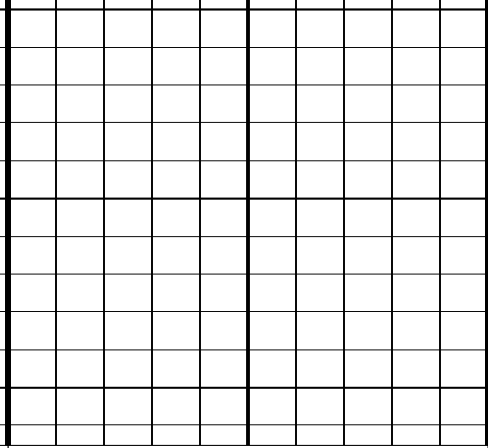
13 3/8" Casing Shoe @ 1735.90mMD



ROP*5 (ROP5)		
200	(M/HR)	0
ARC Gamma Ray, Real-Time (ARC_GR RT)		
0	(GAPI)	200



ARC BHCORR Phase-Shift Resistivity 16-in. at 2 MHz, Real-Time (P16H_RT)		
0.2	(OHMM)	2000
ARC BHCORR Phase-Shift Resistivity 28-in. at 2 MHz, Real-Time (P28H_RT)		
0.2	(OHMM)	2000
ARC BHCORR Phase-Shift Resistivity 40-in. at 2 MHz, Real-Time (P40H_RT)		
0.2	(OHMM)	2000
ARC BHCORR Attenuation Resistivity 40-in. at 2 MHz, Real-Time (A40H_RT)		
0.2	(OHMM)	2000



Coherence at Compressional Peak, Real-Time (CHCO_RT)		
-4	(----	1
Delta-T Compressional, Real-Time (DTCO_RT)		
140	(US/F)	40