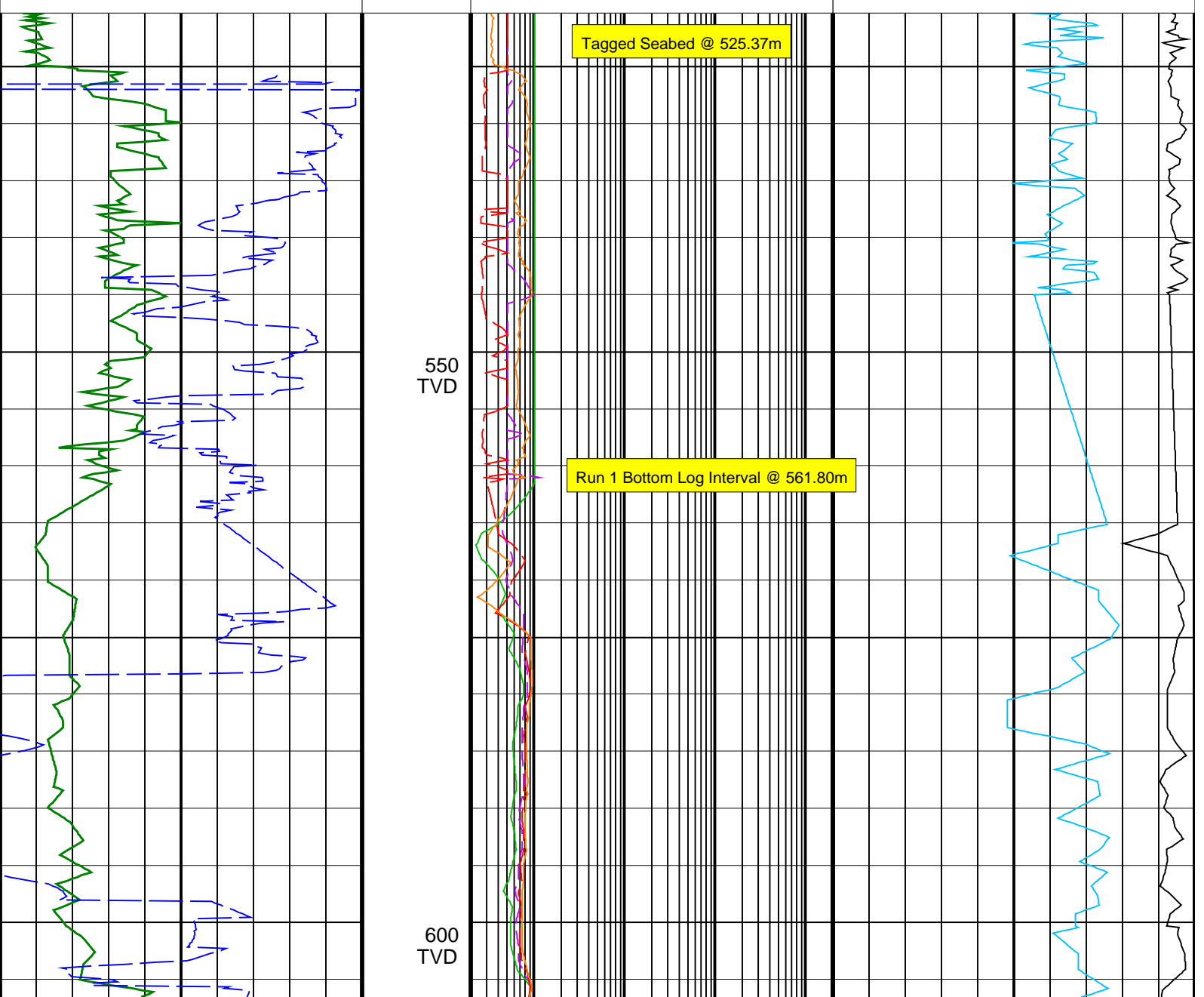
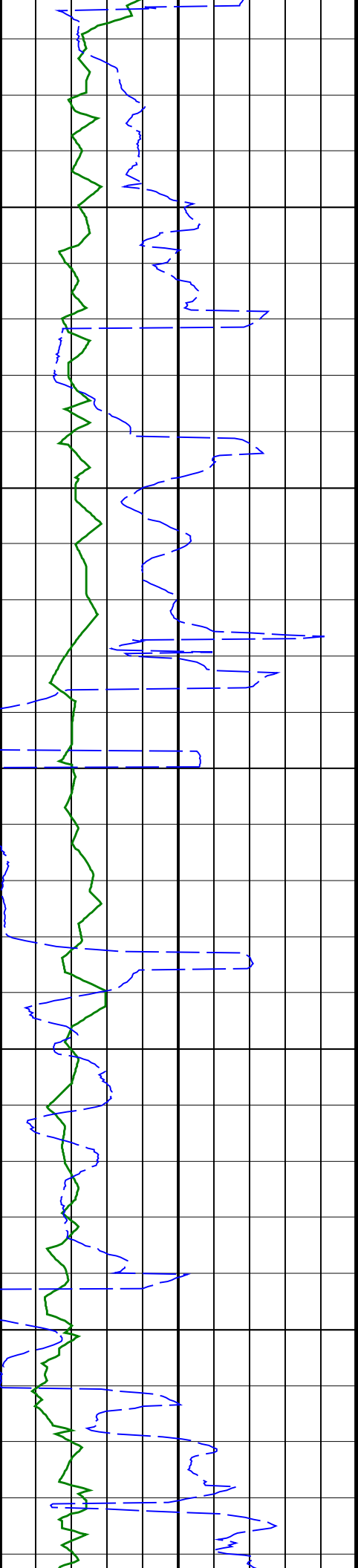


Elver-1_VISION Resistivity RT 500TVD

IDEAL Version: ID13_0C_08 <TVD> Vertical Scale: 1:500 Graphics File Created: 23-Dec-2008 01:30

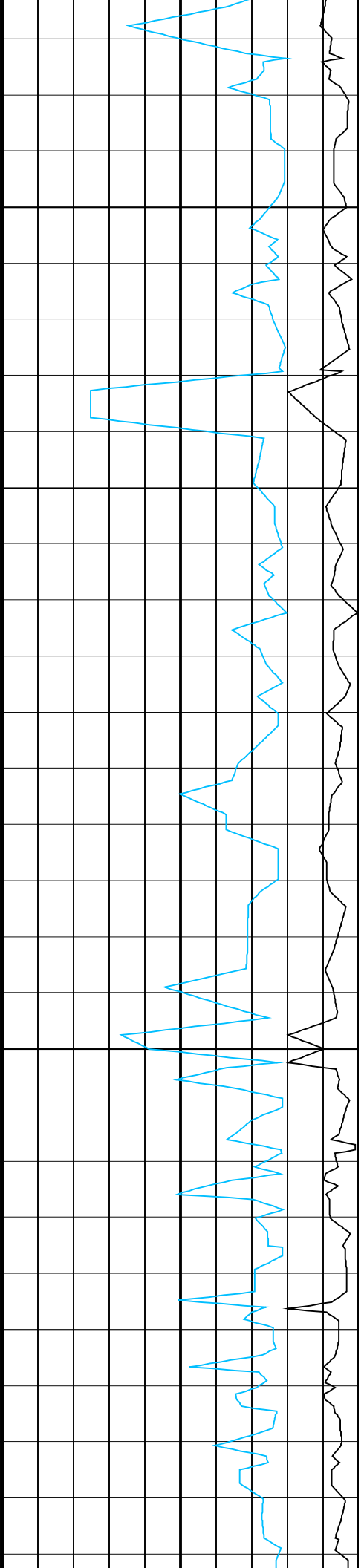
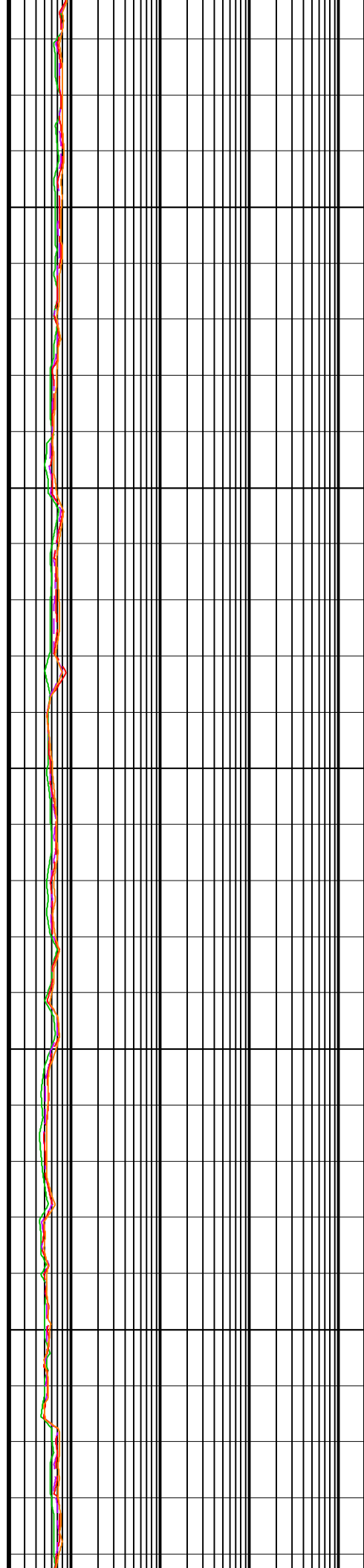
	<p>ARC BHCorr Attenuation Resistivity <u>40-in. at 2 MHz, Real-Time (A40H_RT)</u> 0.2 (OHMM) 2000</p> <p>ARC BHCorr Phase-Shift Resistivity <u>40-in. at 2 MHz, Real-Time (P40H_RT)</u> 0.2 (OHMM) 2000</p> <p>ARC BHCorr Phase-Shift Resistivity <u>28-in. at 2 MHz, Real-Time (P28H_RT)</u> 0.2 (OHMM) 2000</p> <p>ARC BHCorr Phase-Shift Resistivity <u>16-in. at 2 MHz, Real-Time (P16H_RT)</u> 0.2 (OHMM) 2000</p>	
<p>ARC Gamma Ray, Real-Time (ARC_GR_RT) 0 (GAPI) 200</p>		<p>Delta-T Compressional, Real-Time (DTCO_RT) 140 (US/F) 40</p>
<p>ROP*5 (ROP5) 200 (M/HR) 0</p>		<p>Coherence at Compressional Peak, Real-Time (CHCO_RT) -4 (----) 1</p>

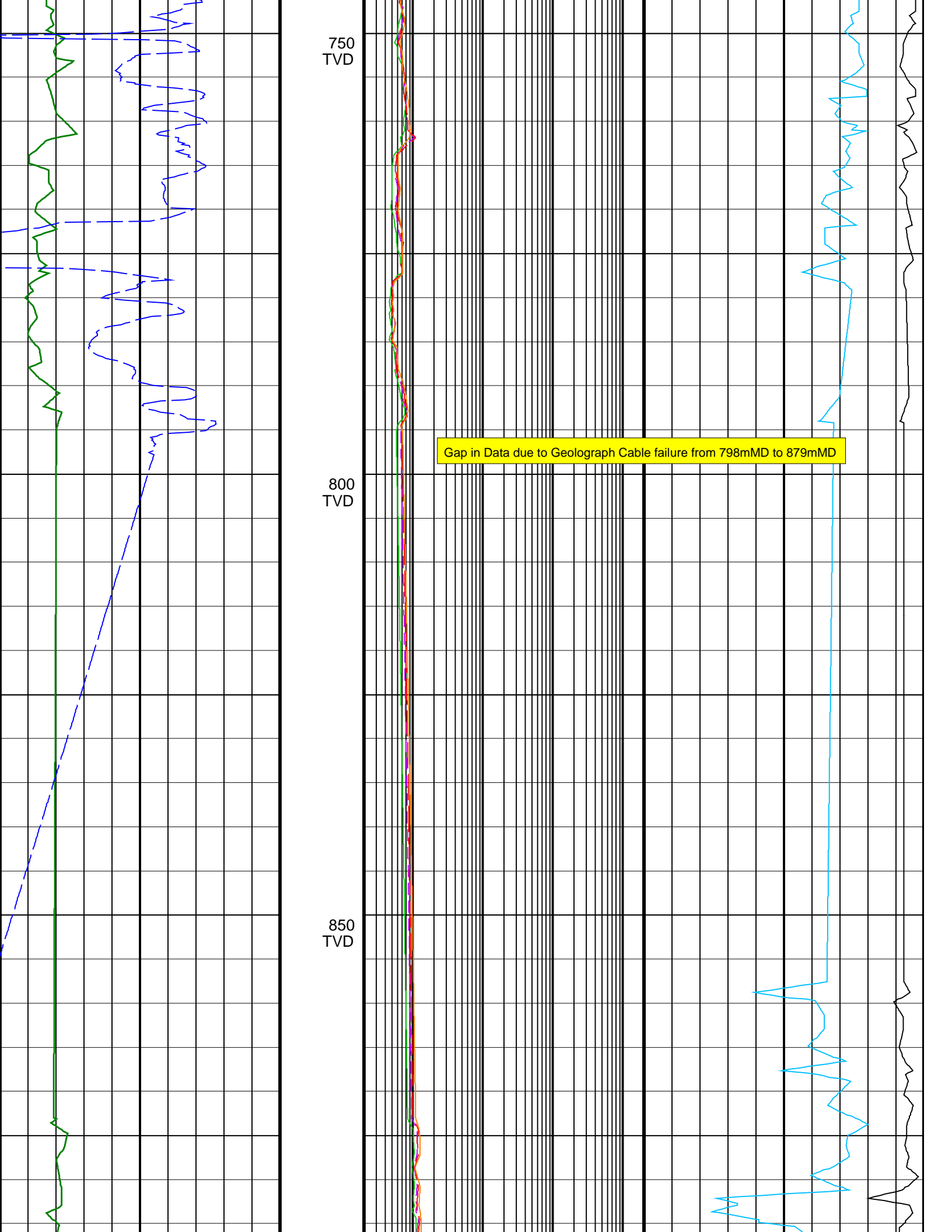




650
TVD

700
TVD



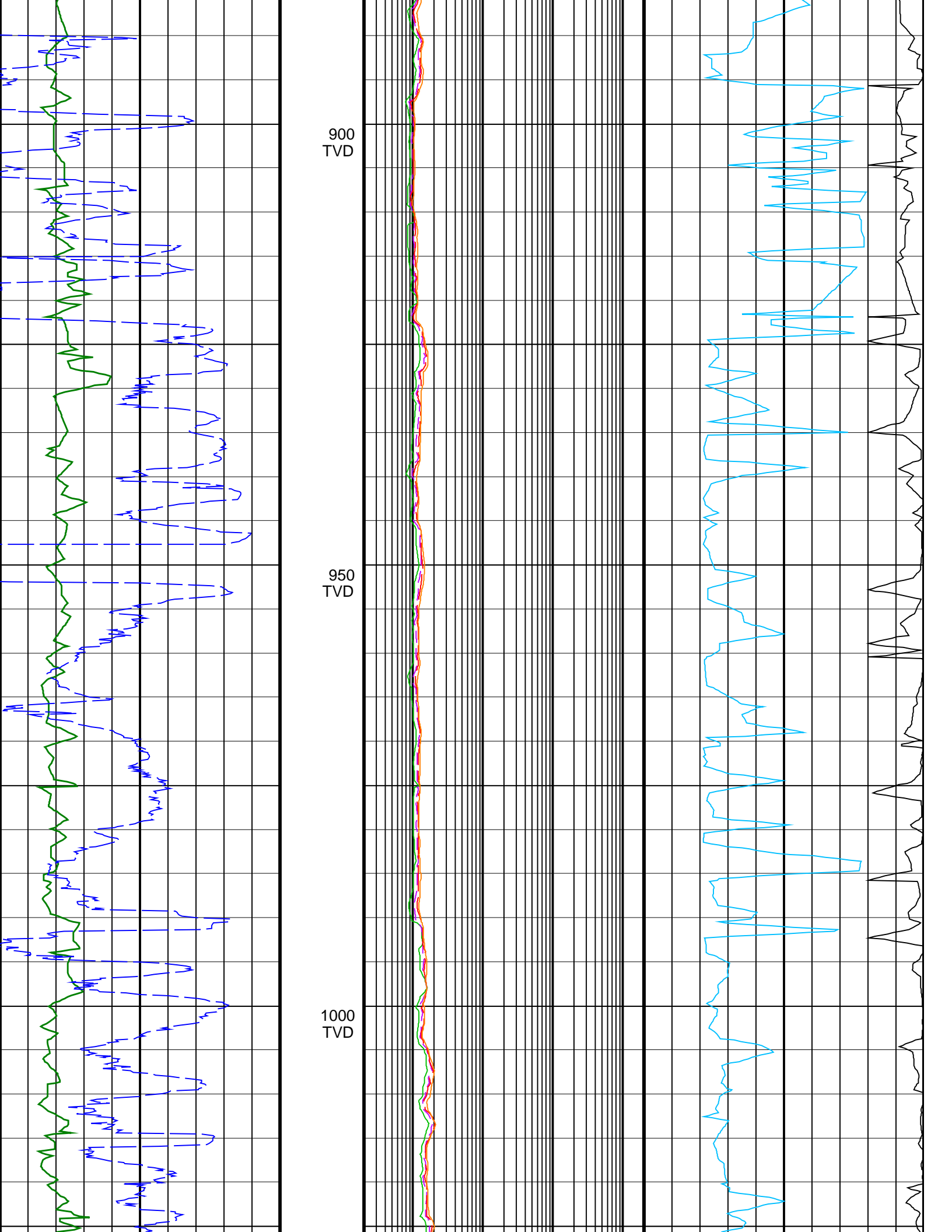


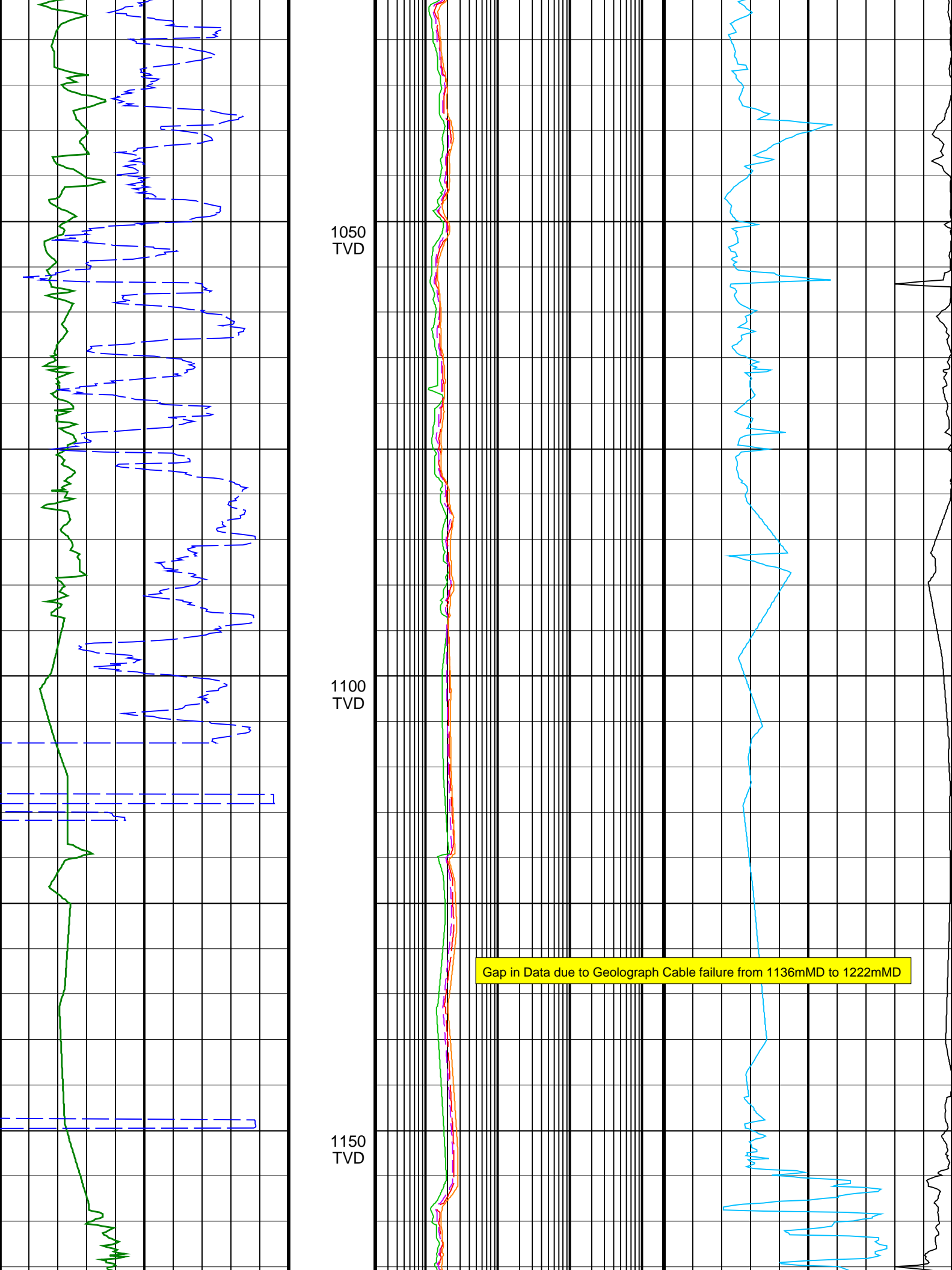
750
TVD

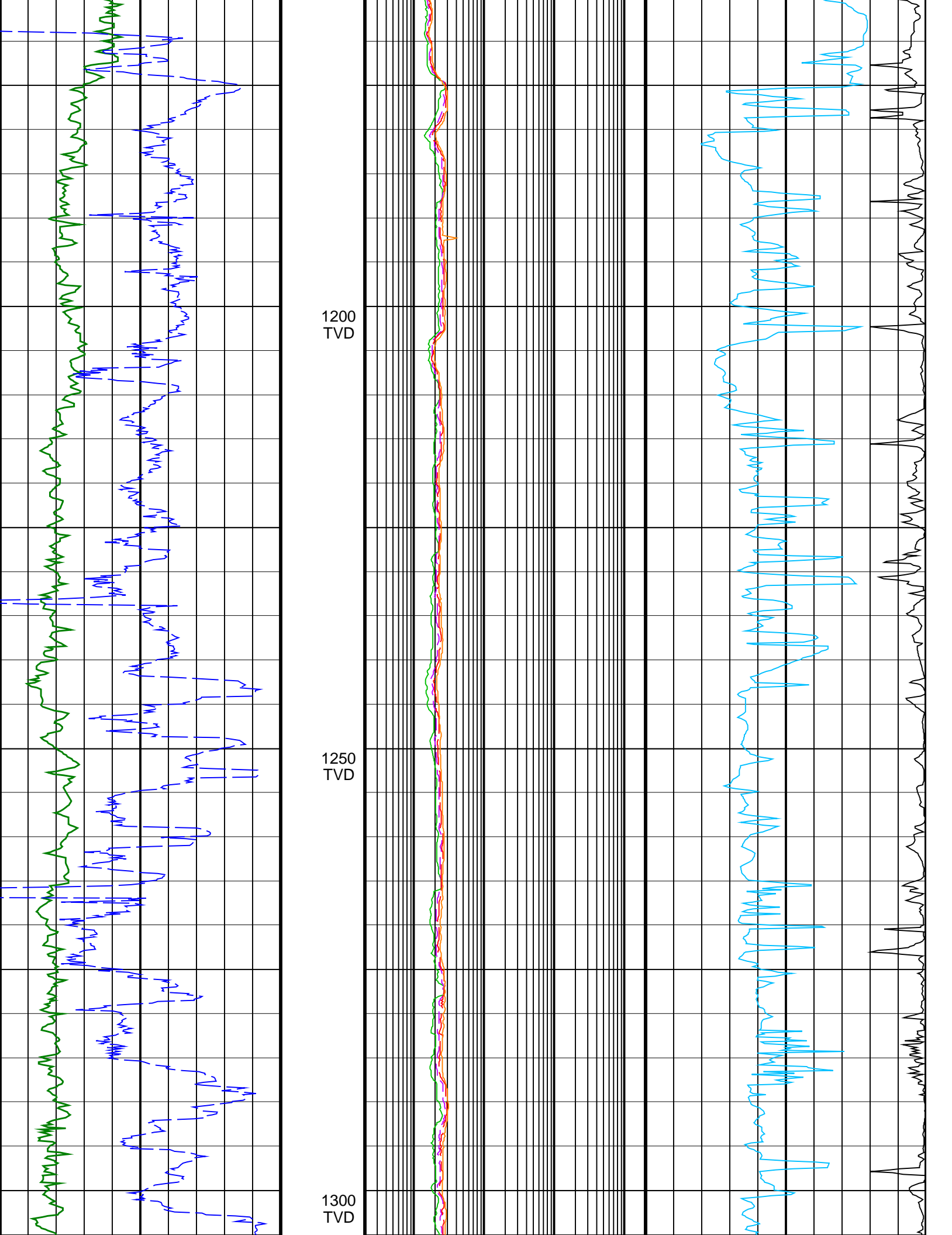
800
TVD

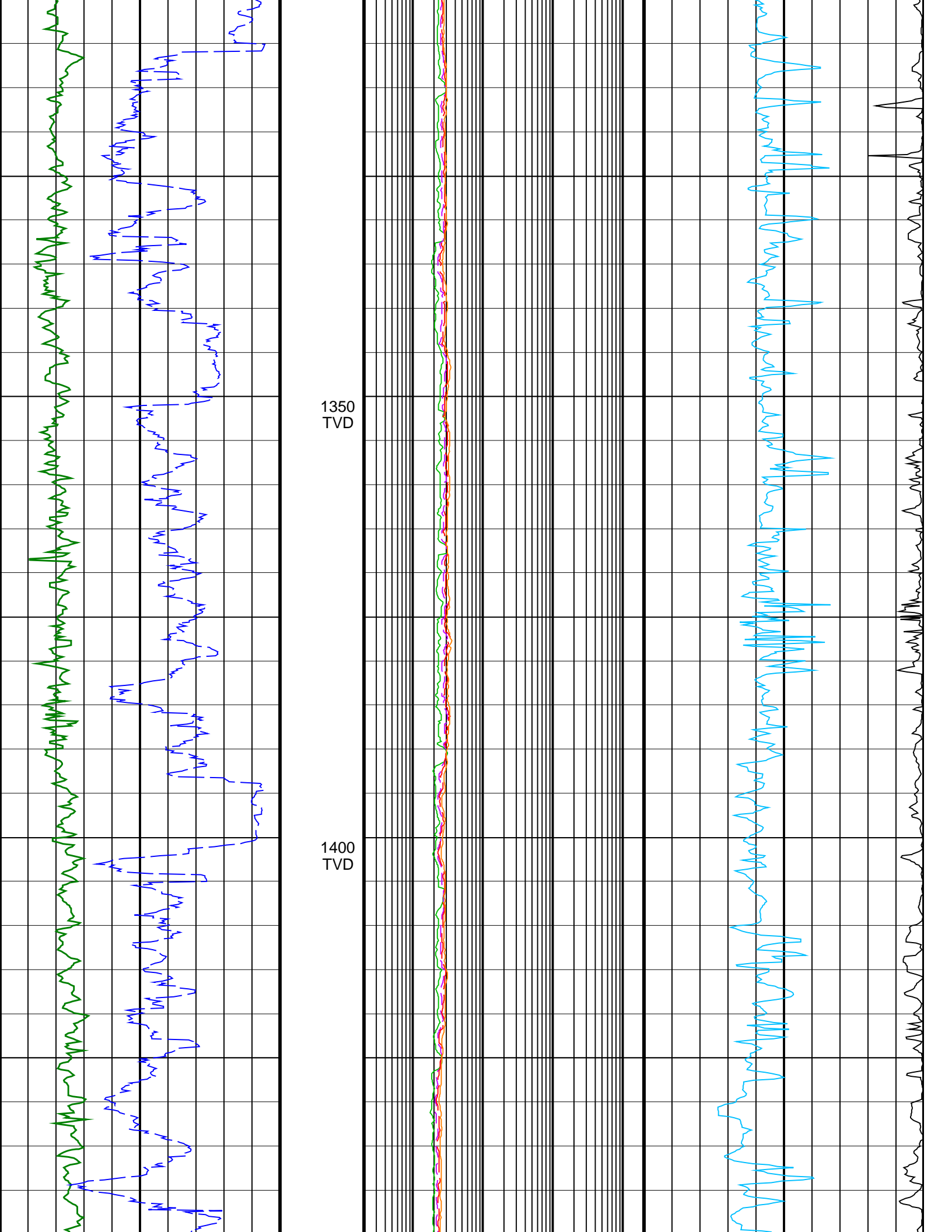
850
TVD

Gap in Data due to Geograph Cable failure from 798mMD to 879mMD



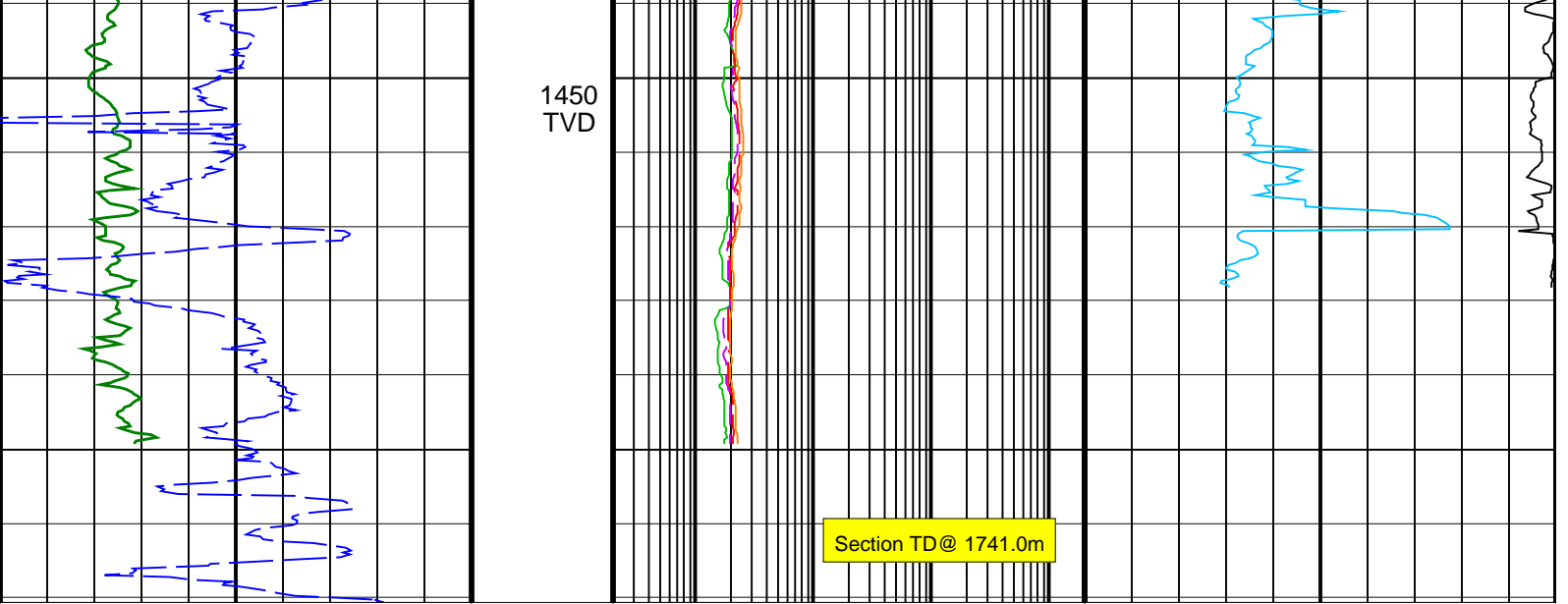






1350
TVD

1400
TVD



<p><u>ROP*5 (ROP5)</u> <u>(M/HR)</u></p> <p>200 0</p>	<p><u>ARC BHCorr Phase-Shift Resistivity</u> <u>16-in. at 2 MHz, Real-Time (P16H_RT)</u></p> <p>0.2 (OHMM) 2000</p>	<p><u>Coherence at Compressional Peak,</u> <u>Real-Time (CHCO_RT)</u></p> <p>-4 (----) 1</p>
<p><u>ARC Gamma Ray, Real-Time (ARC_GR_RT)</u> <u>(GAPI)</u></p> <p>0 200</p>	<p><u>ARC BHCorr Phase-Shift Resistivity</u> <u>28-in. at 2 MHz, Real-Time (P28H_RT)</u></p> <p>0.2 (OHMM) 2000</p>	<p><u>Delta-T Compressional, Real-Time</u> <u>(DTCO_RT)</u></p> <p>140 (US/F) 40</p>
	<p><u>ARC BHCorr Phase-Shift Resistivity</u> <u>40-in. at 2 MHz, Real-Time (P40H_RT)</u></p> <p>0.2 (OHMM) 2000</p>	
	<p><u>ARC BHCorr Attenuation Resistivity</u> <u>40-in. at 2 MHz, Real-Time (A40H_RT)</u></p> <p>0.2 (OHMM) 2000</p>	