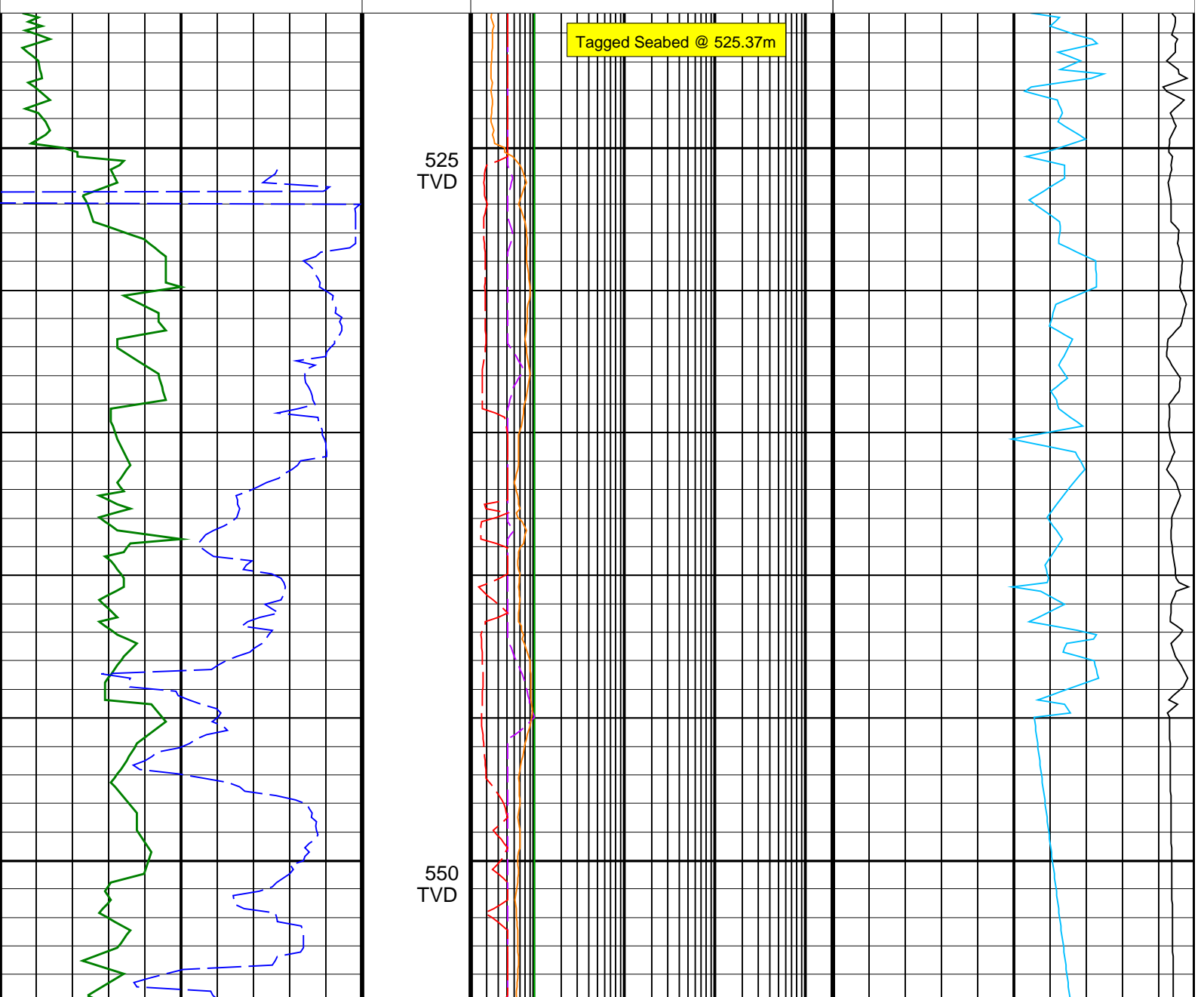


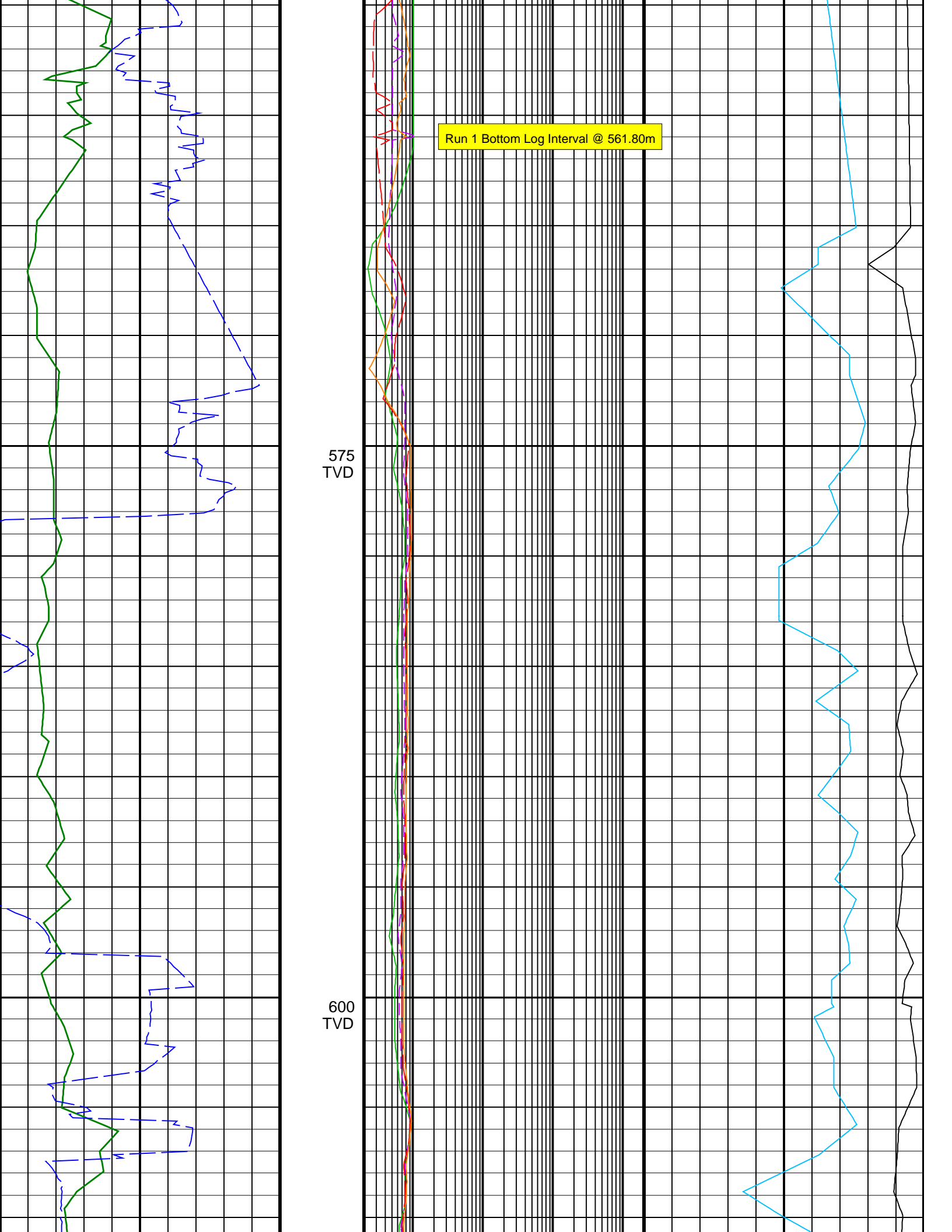
# Elver-1\_VISION Resistivity RT 200TVD

IDEAL Version: ID13\_0C\_08 <TVD> Vertical Scale: 1:200

Graphics File Created: 23-Dec-2008 01:30

<p>ARC Gamma Ray, Real-Time (ARC_GR_RT) (GAPI) 0 200</p>	<p>ARC BHCorr Attenuation Resistivity 40-in. at 2 MHz, Real-Time (A40H_RT) 0.2 (OHMM) 2000</p>	
<p>ROP*5 (ROP5) (M/HR) 200 0</p>	<p>ARC BHCorr Phase-Shift Resistivity 40-in. at 2 MHz, Real-Time (P40H_RT) 0.2 (OHMM) 2000</p>	<p>Delta-T Compressional, Real-Time (DTCO_RT) 140 (US/F) 40</p>
	<p>ARC BHCorr Phase-Shift Resistivity 28-in. at 2 MHz, Real-Time (P28H_RT) 0.2 (OHMM) 2000</p>	<p>Coherence at Compressional Peak, Real-Time (CHCO_RT) -4 (----) 1</p>
	<p>ARC BHCorr Phase-Shift Resistivity 16-in. at 2 MHz, Real-Time (P16H_RT) 0.2 (OHMM) 2000</p>	

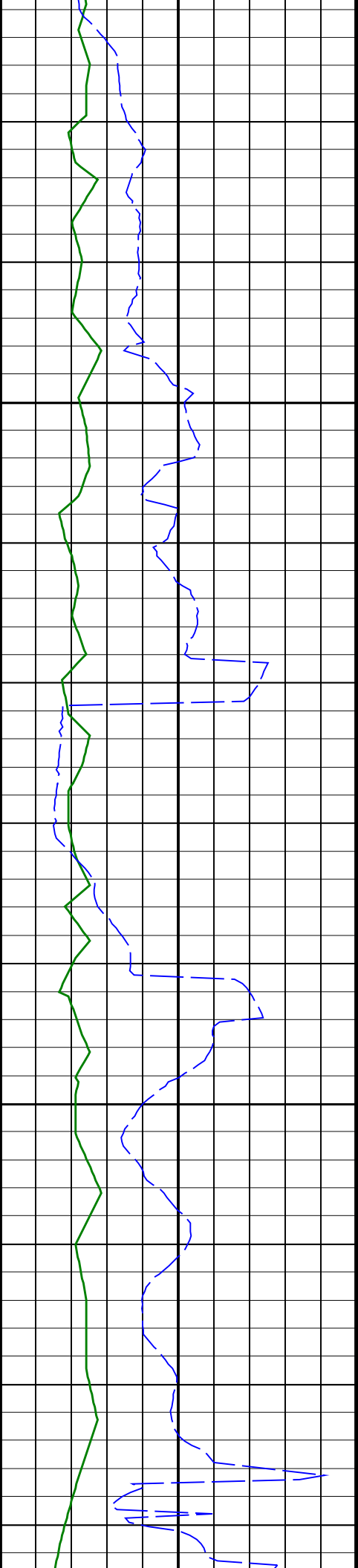




Run 1 Bottom Log Interval @ 561.80m

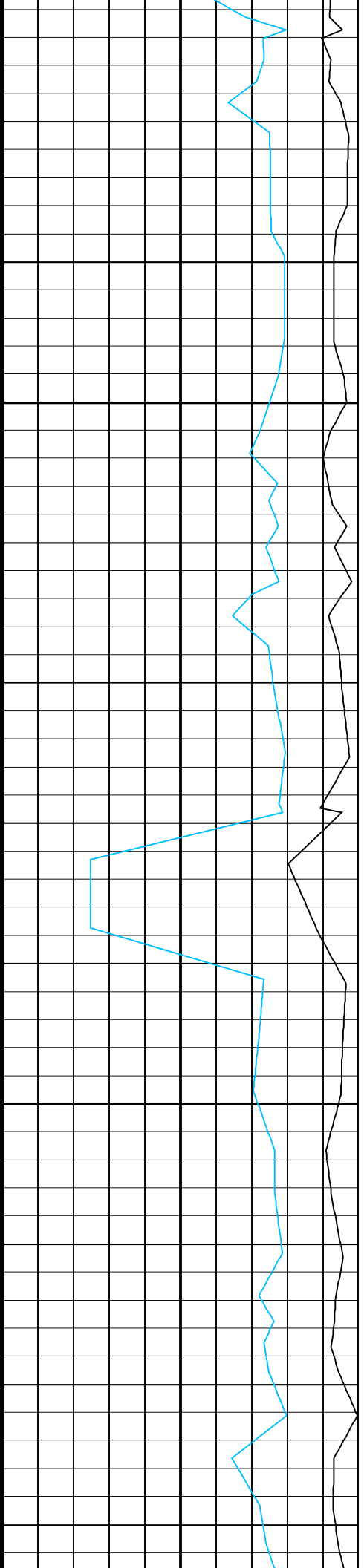
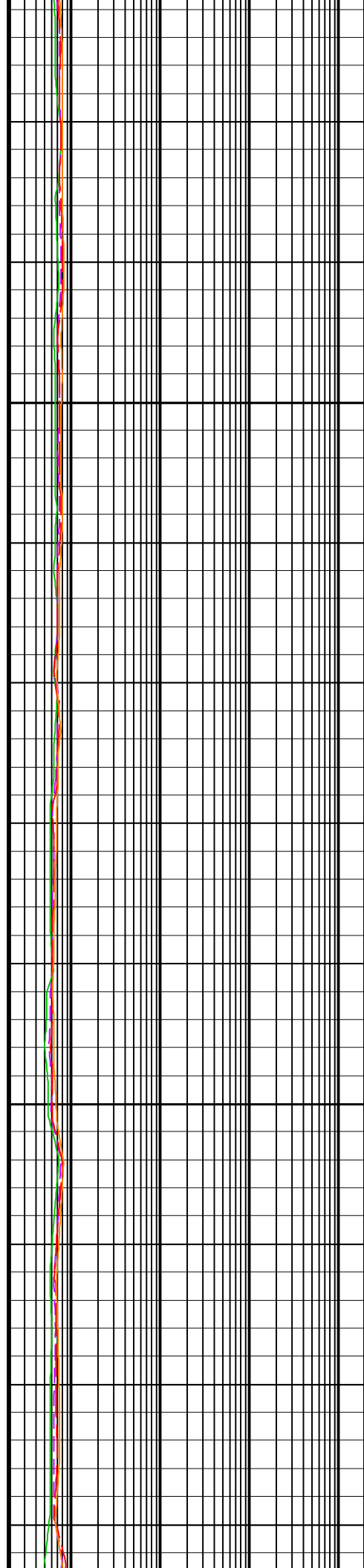
575  
TVD

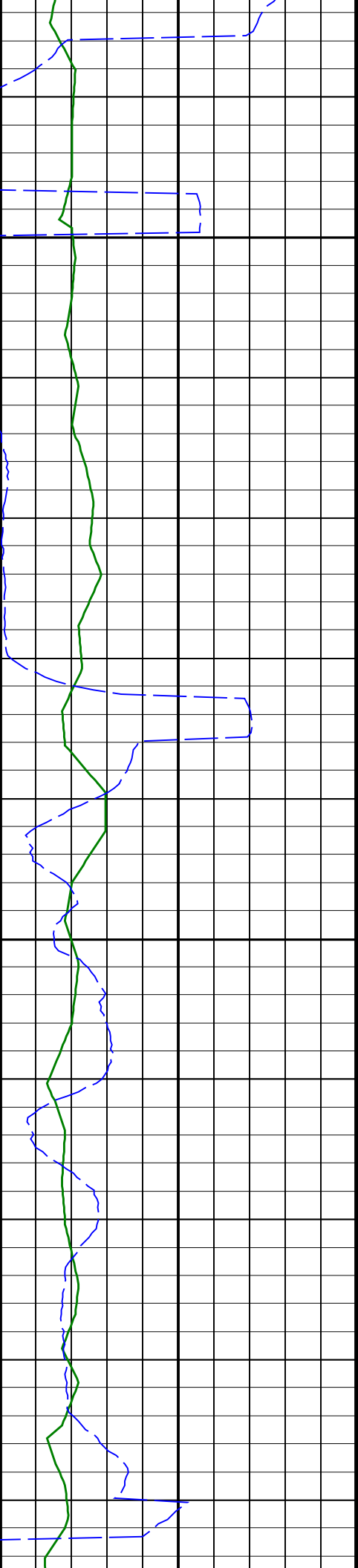
600  
TVD



625  
TVD

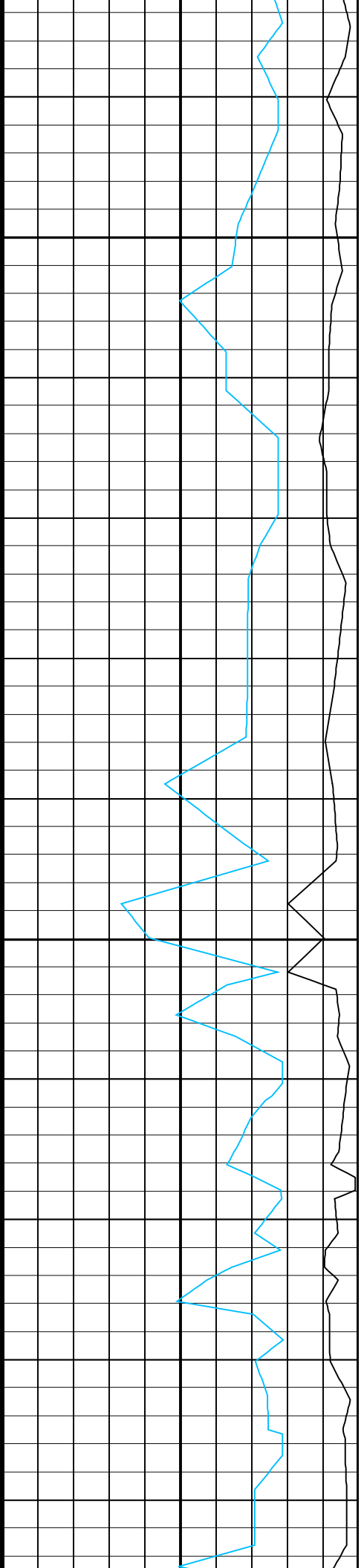
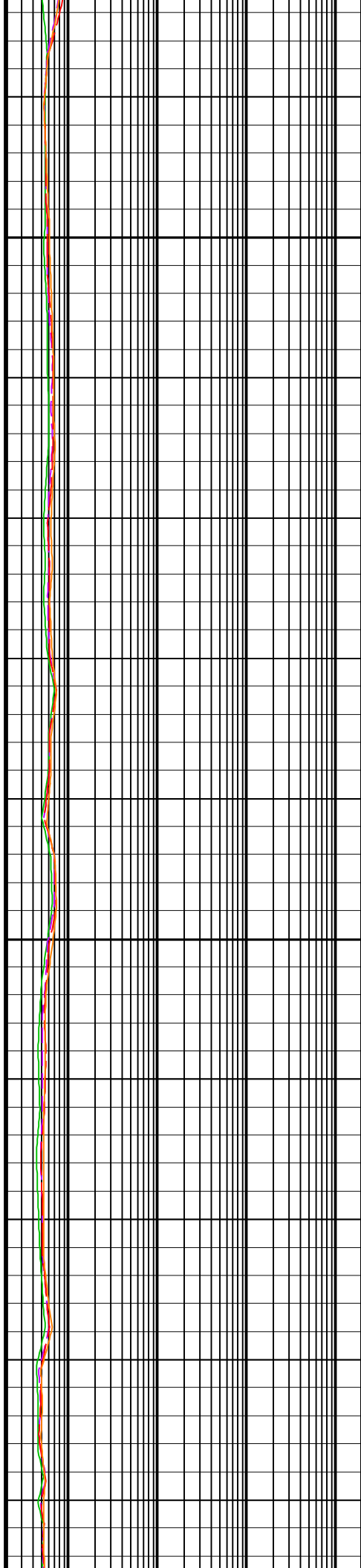
650  
TVD

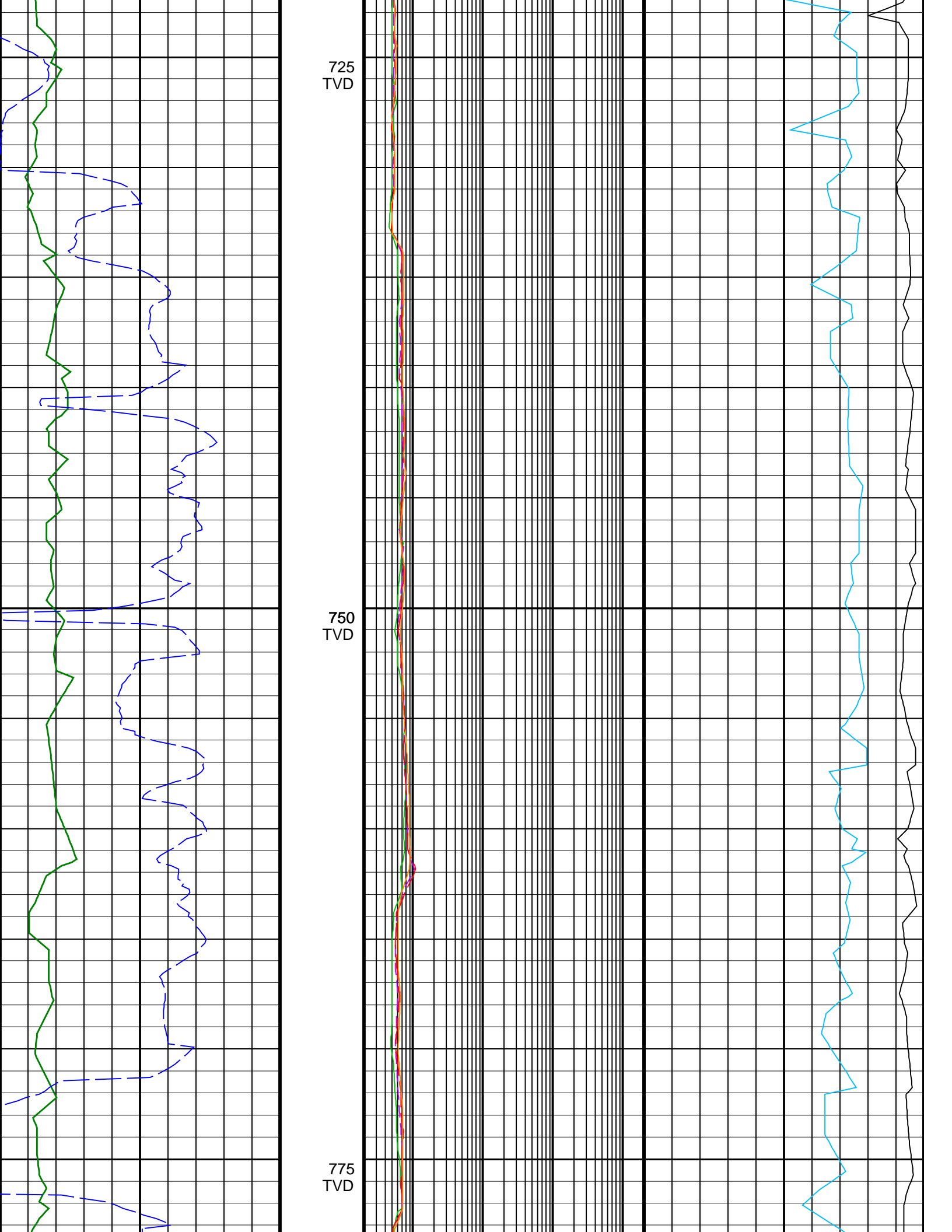




675  
TVD

700  
TVD



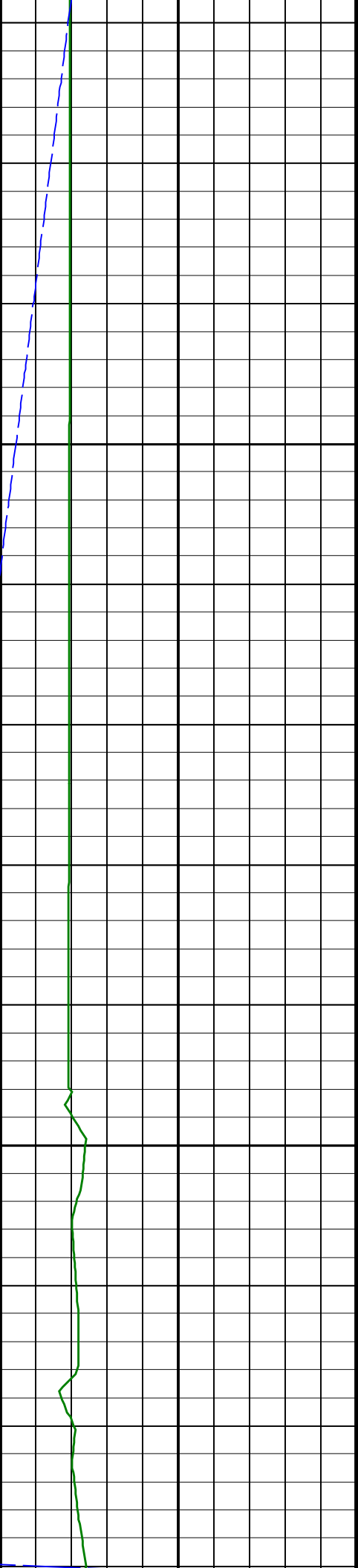


725  
TVD

750  
TVD

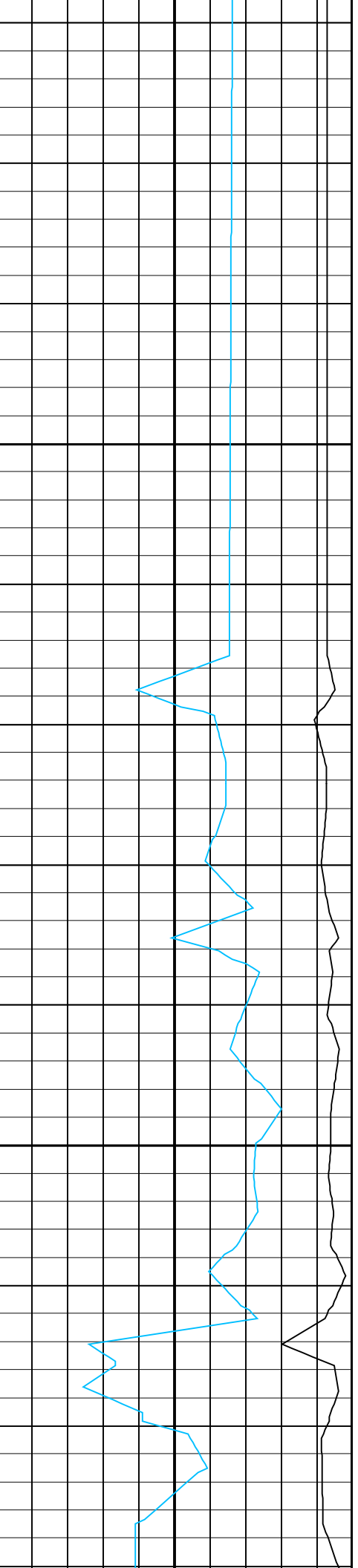
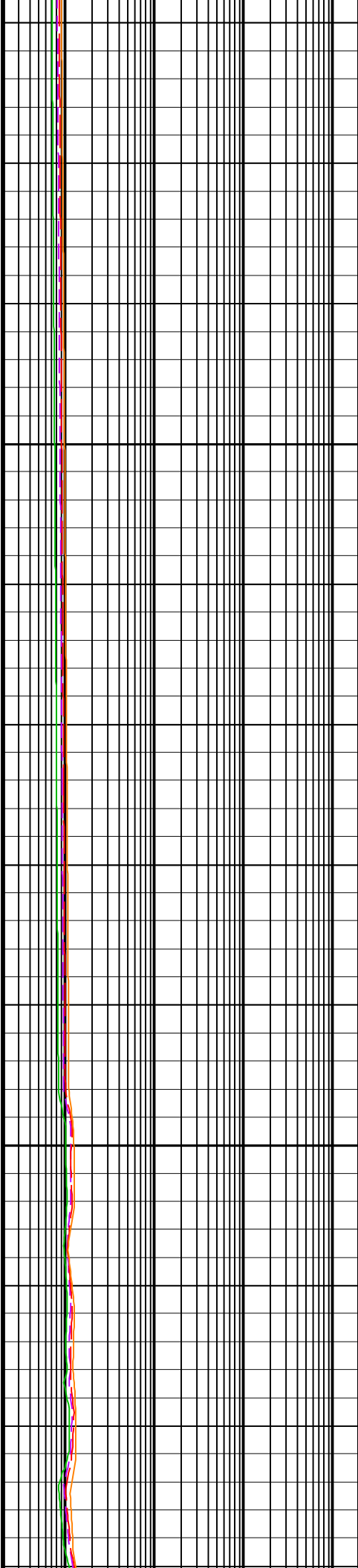
775  
TVD

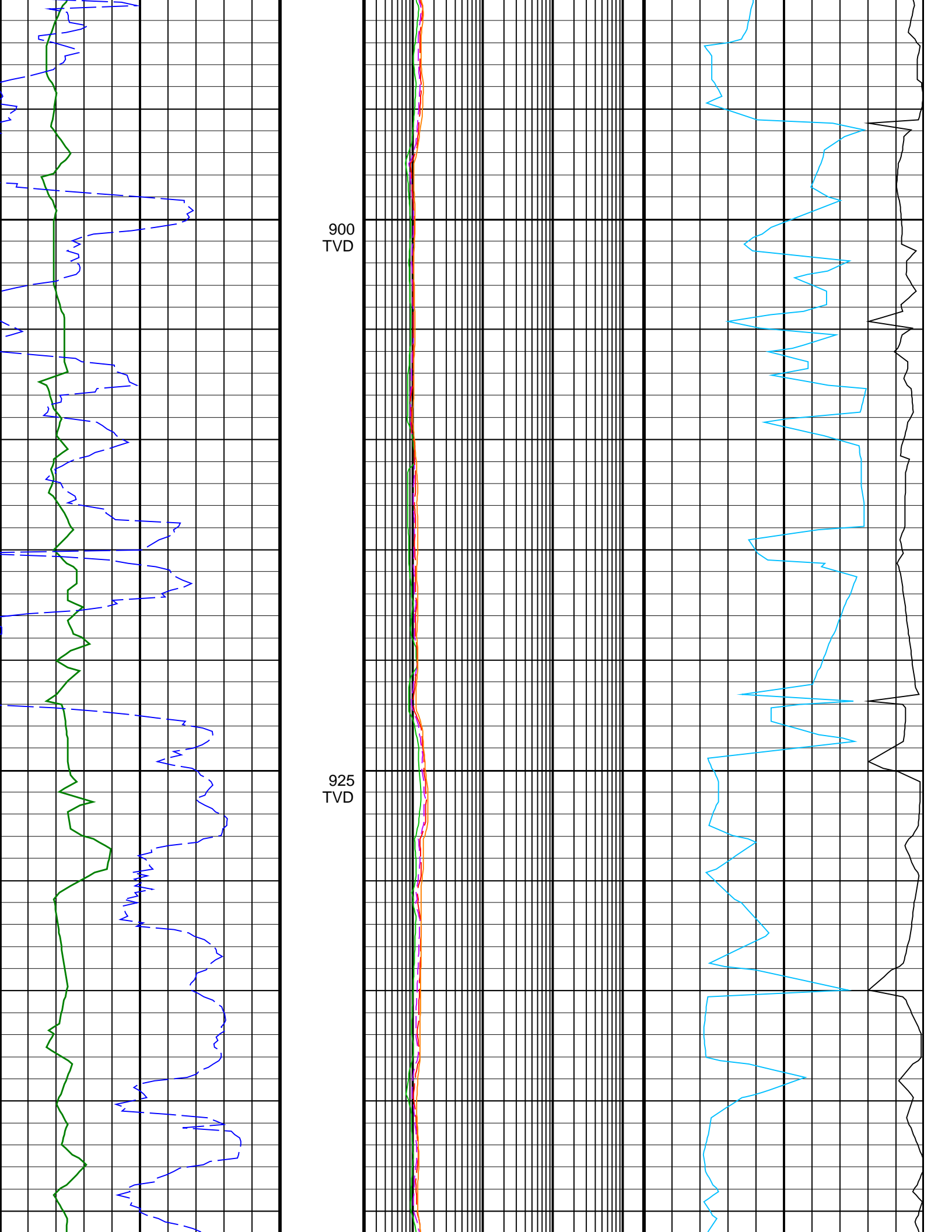




850  
TVD

875  
TVD

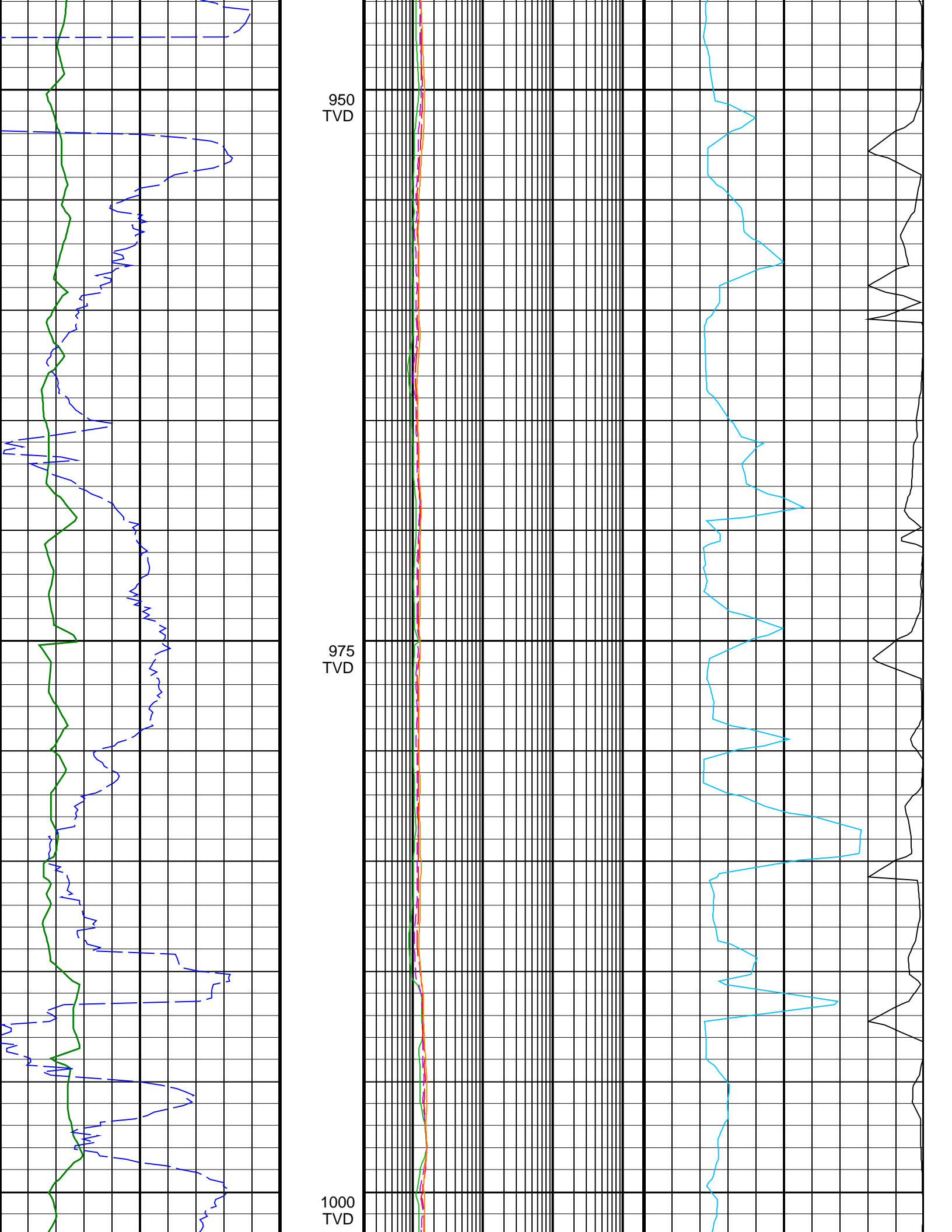


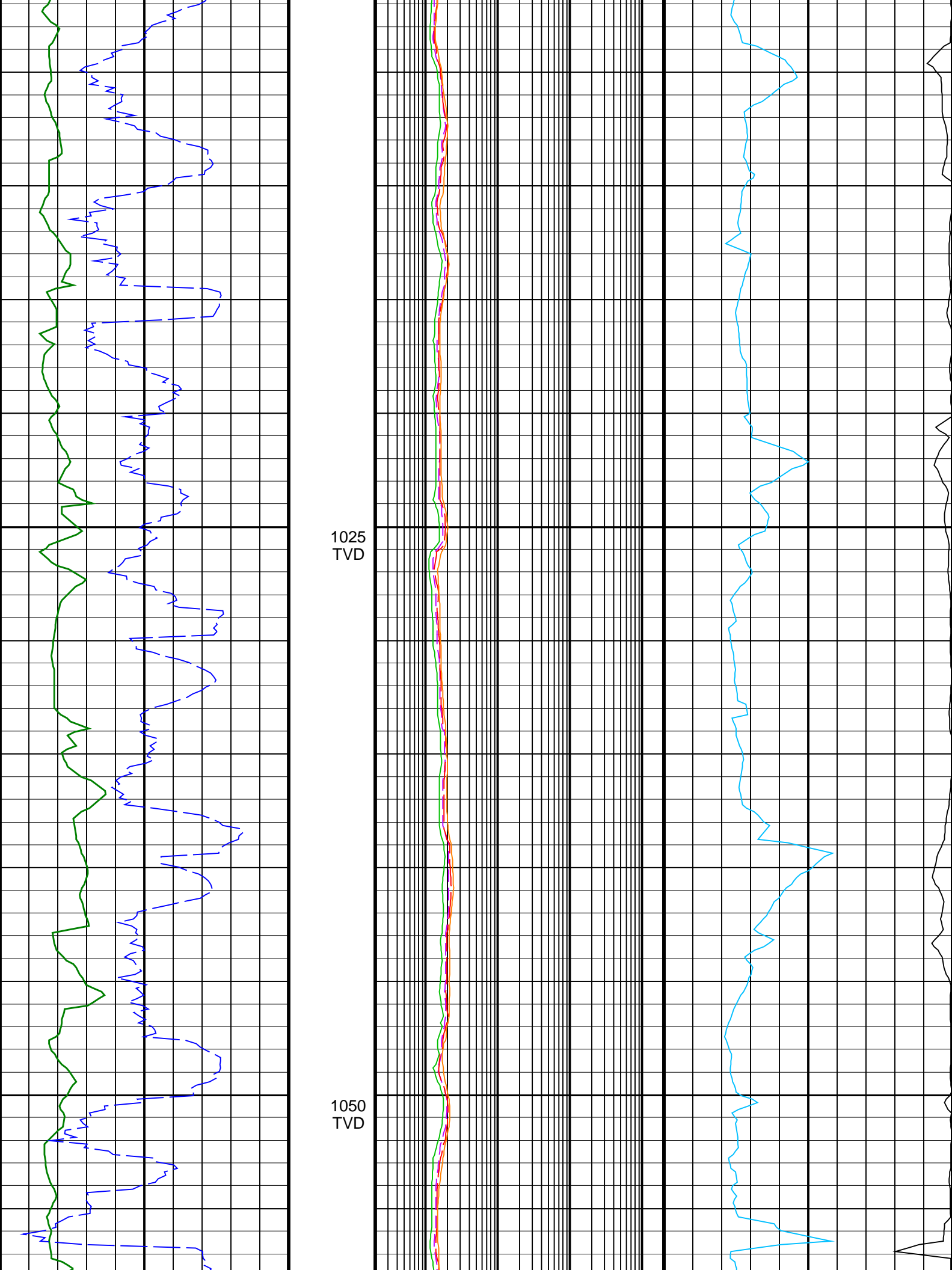


900  
TVD

925  
TVD

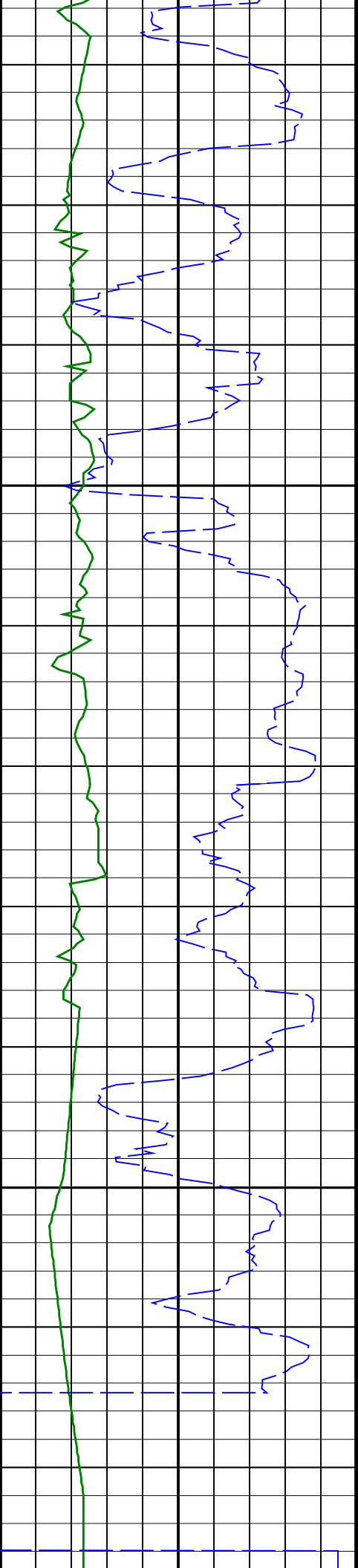






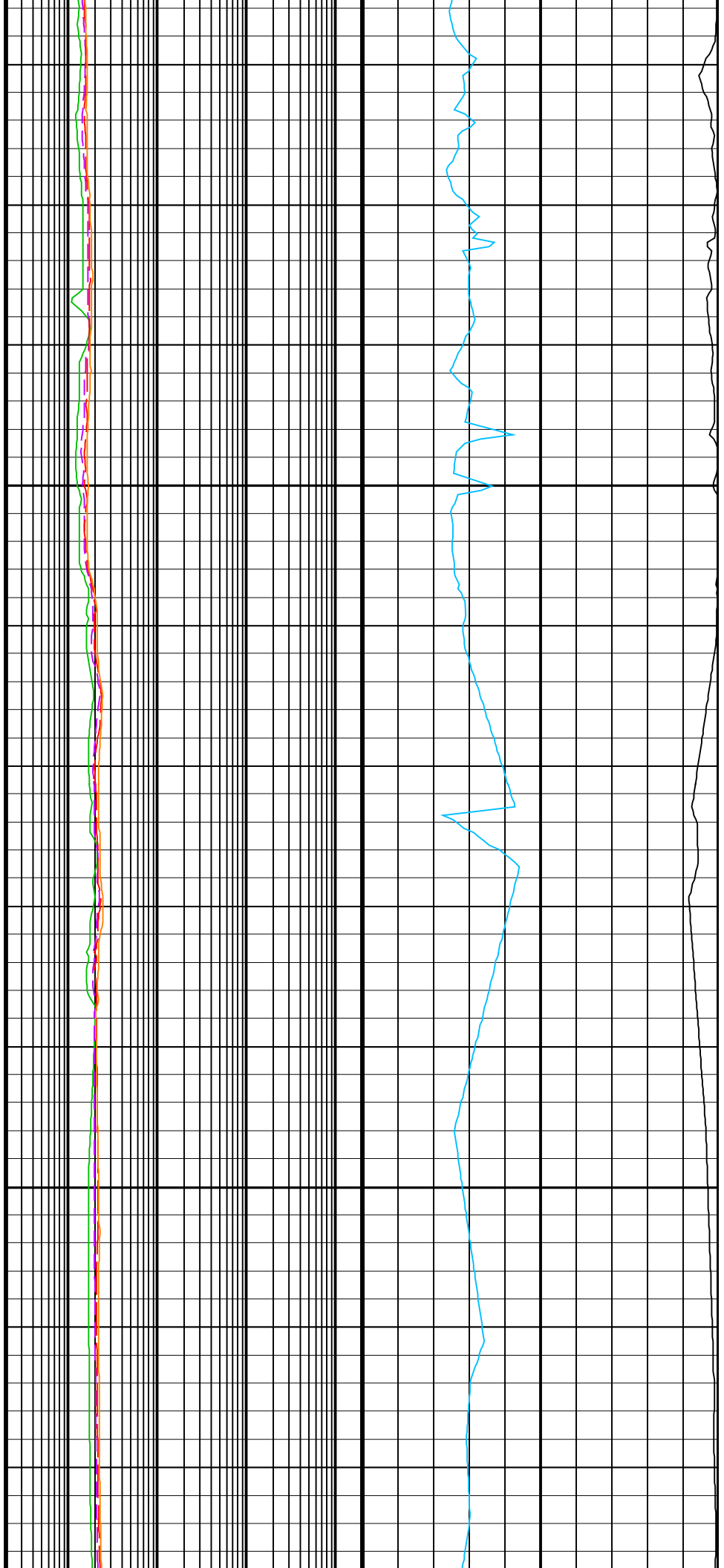
1025  
TVD

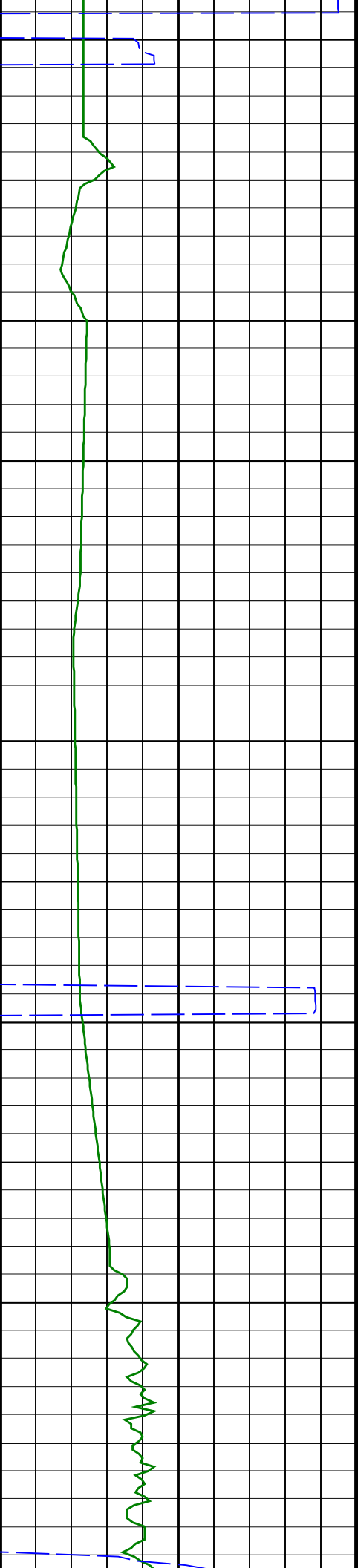
1050  
TVD



1075  
TVD

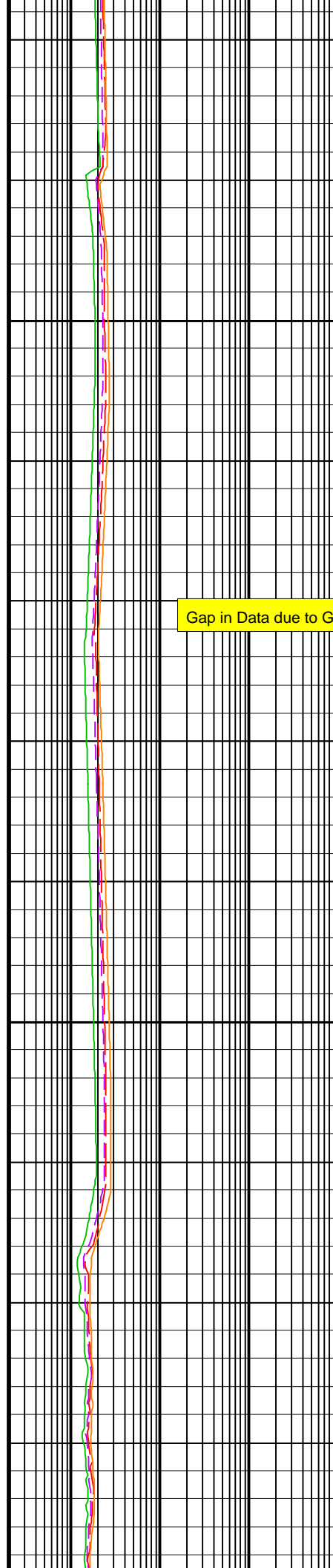
1100  
TVD



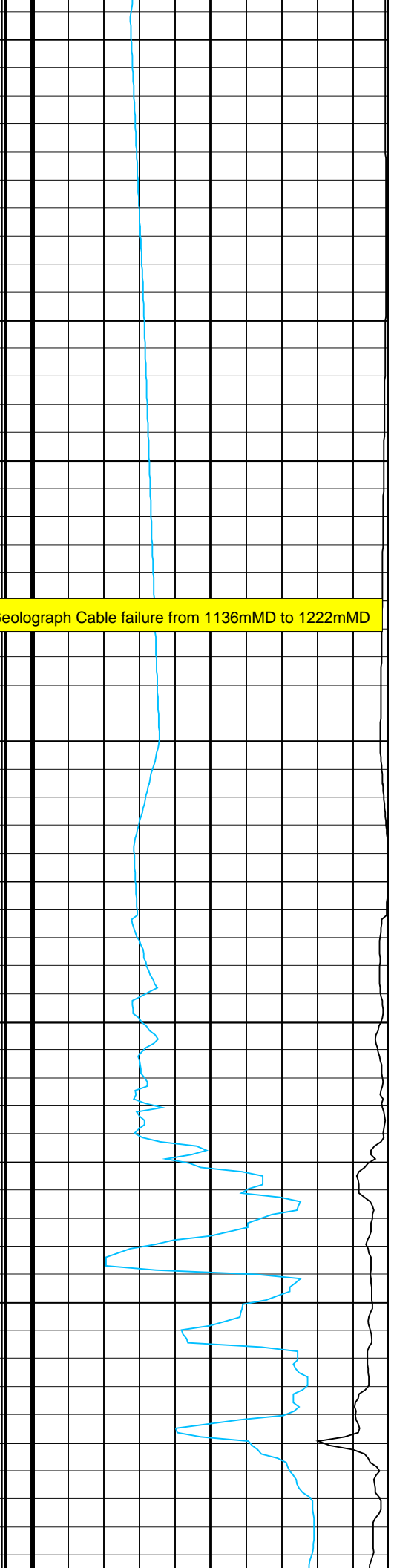


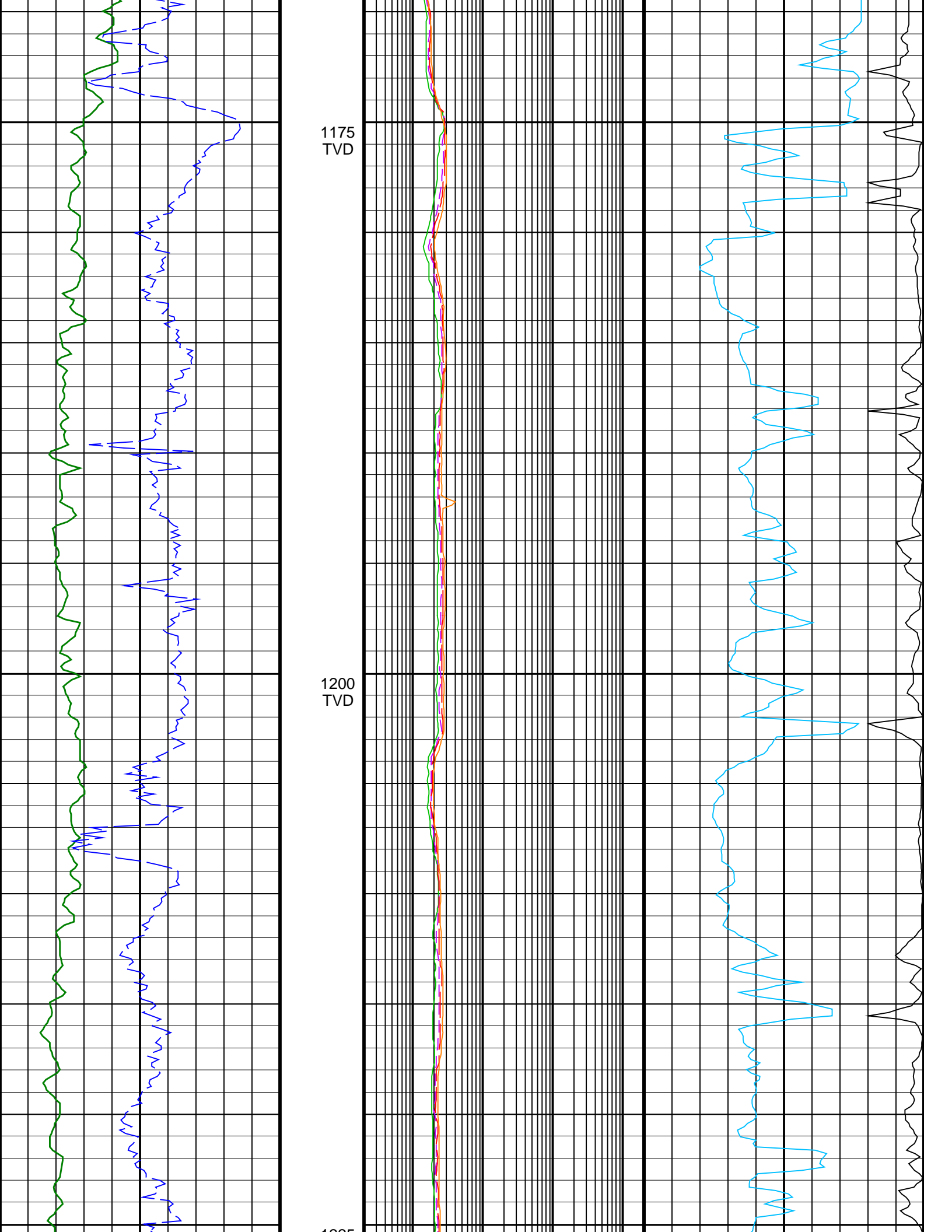
1125  
TVD

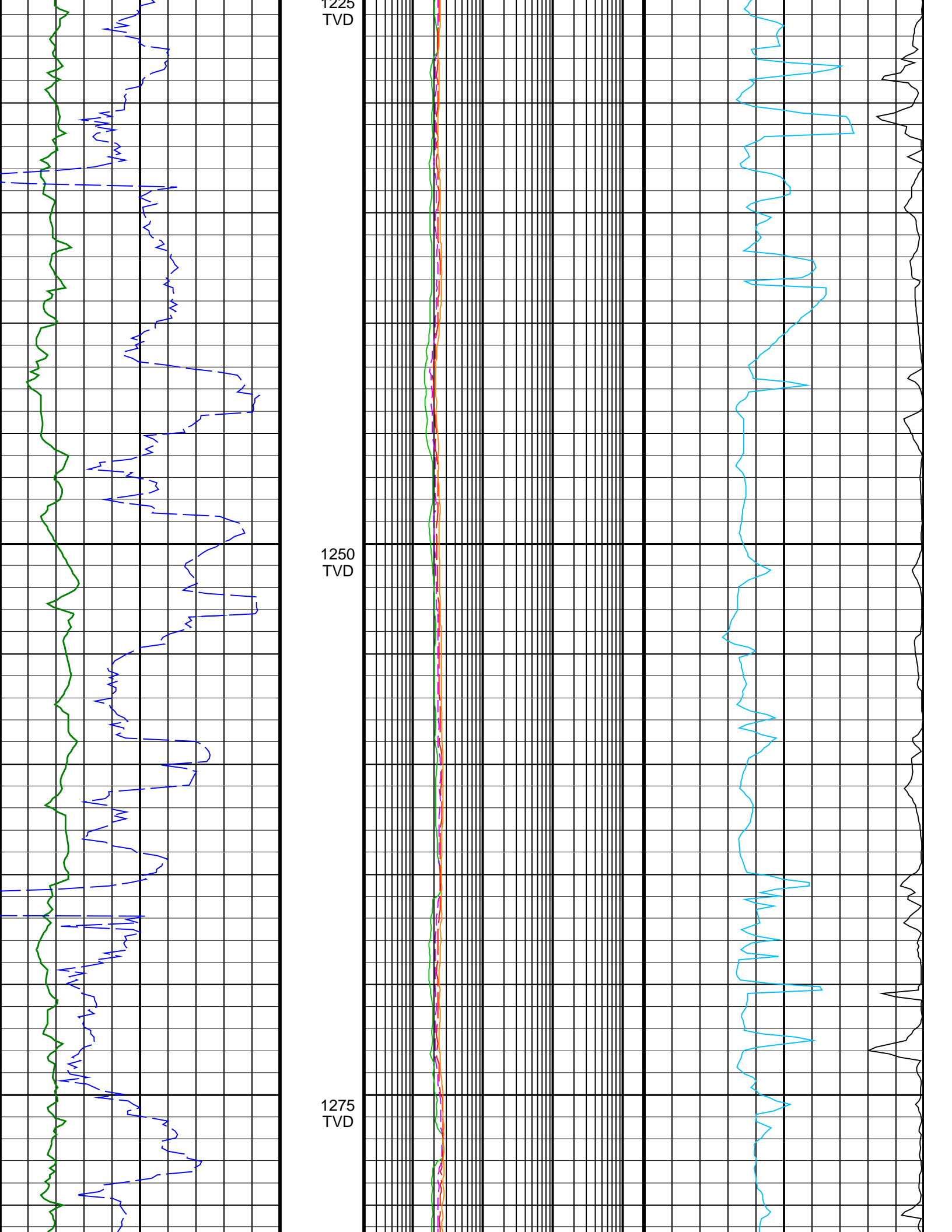
1150  
TVD

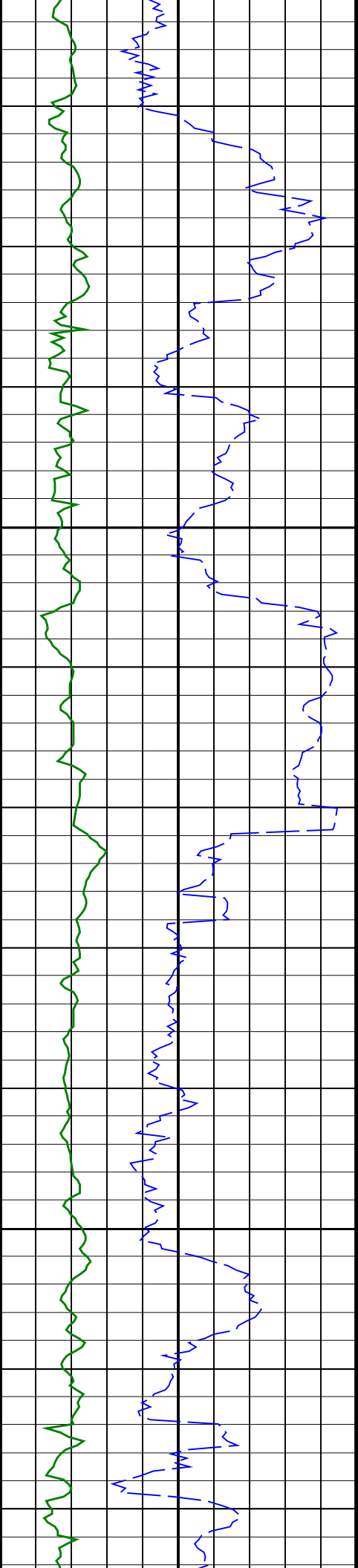


Gap in Data due to Geograph Cable failure from 1136mMD to 1222mMD



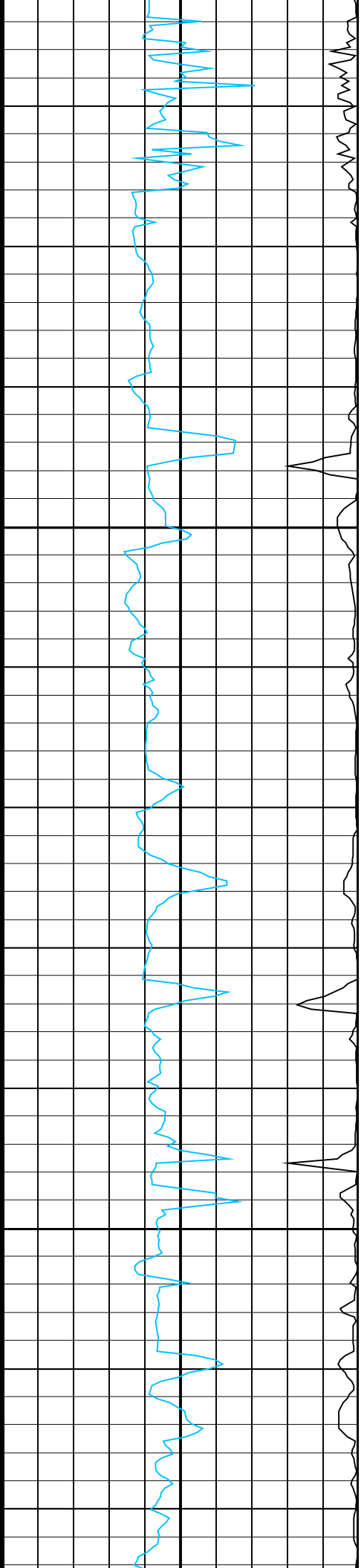
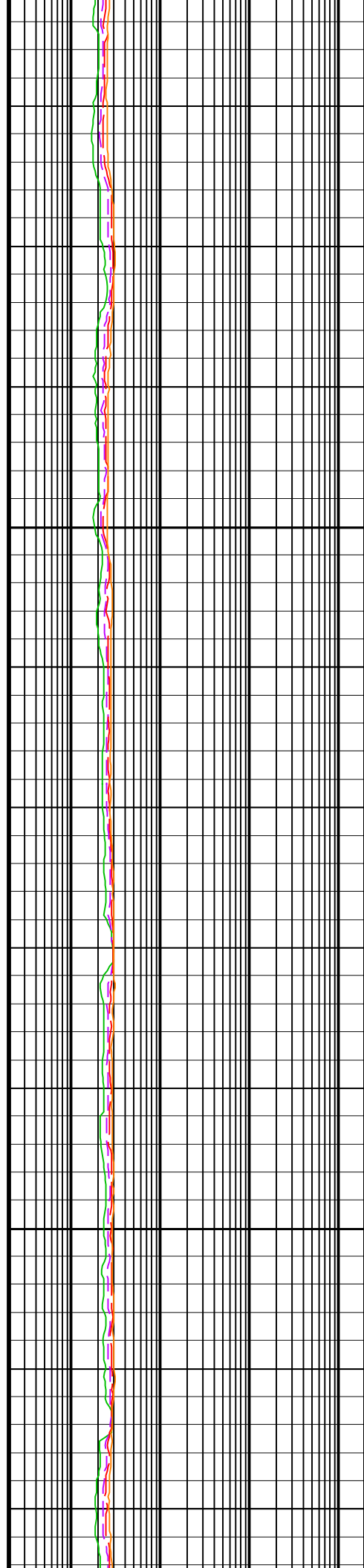


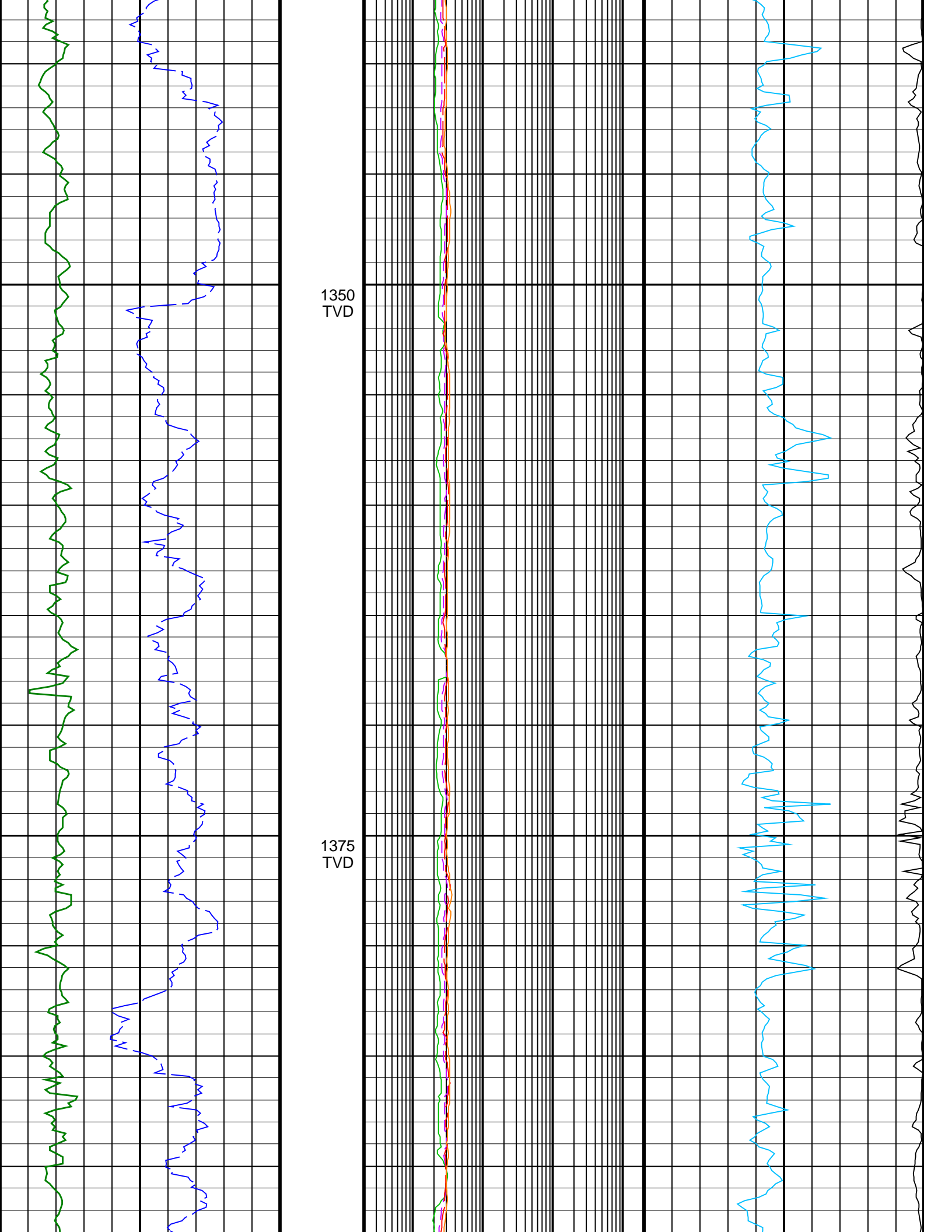




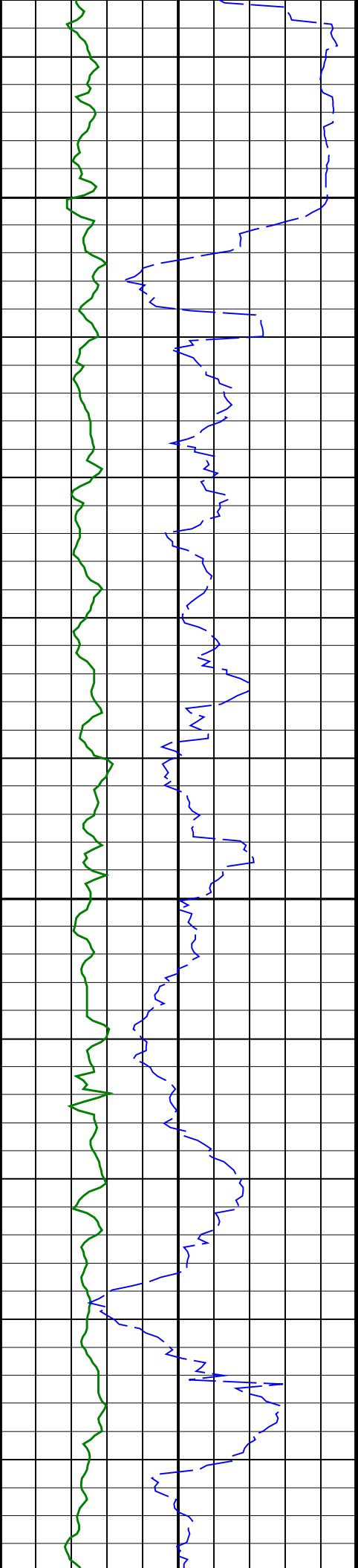
1300  
TVD

1325  
TVD



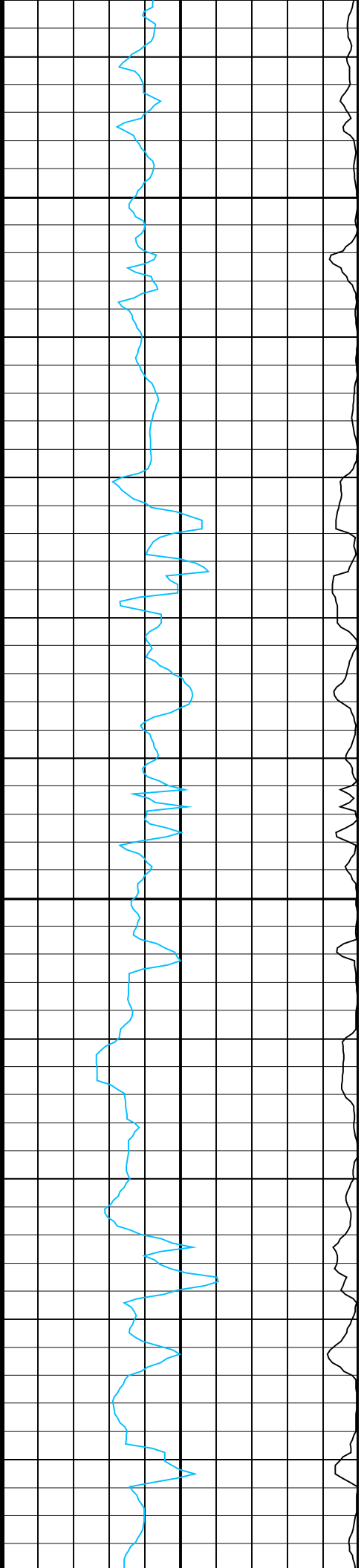
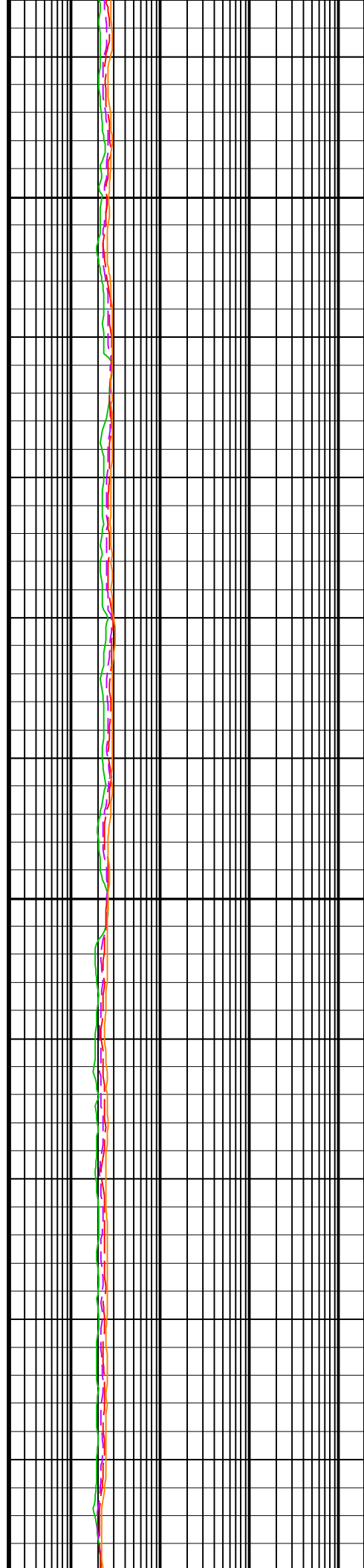


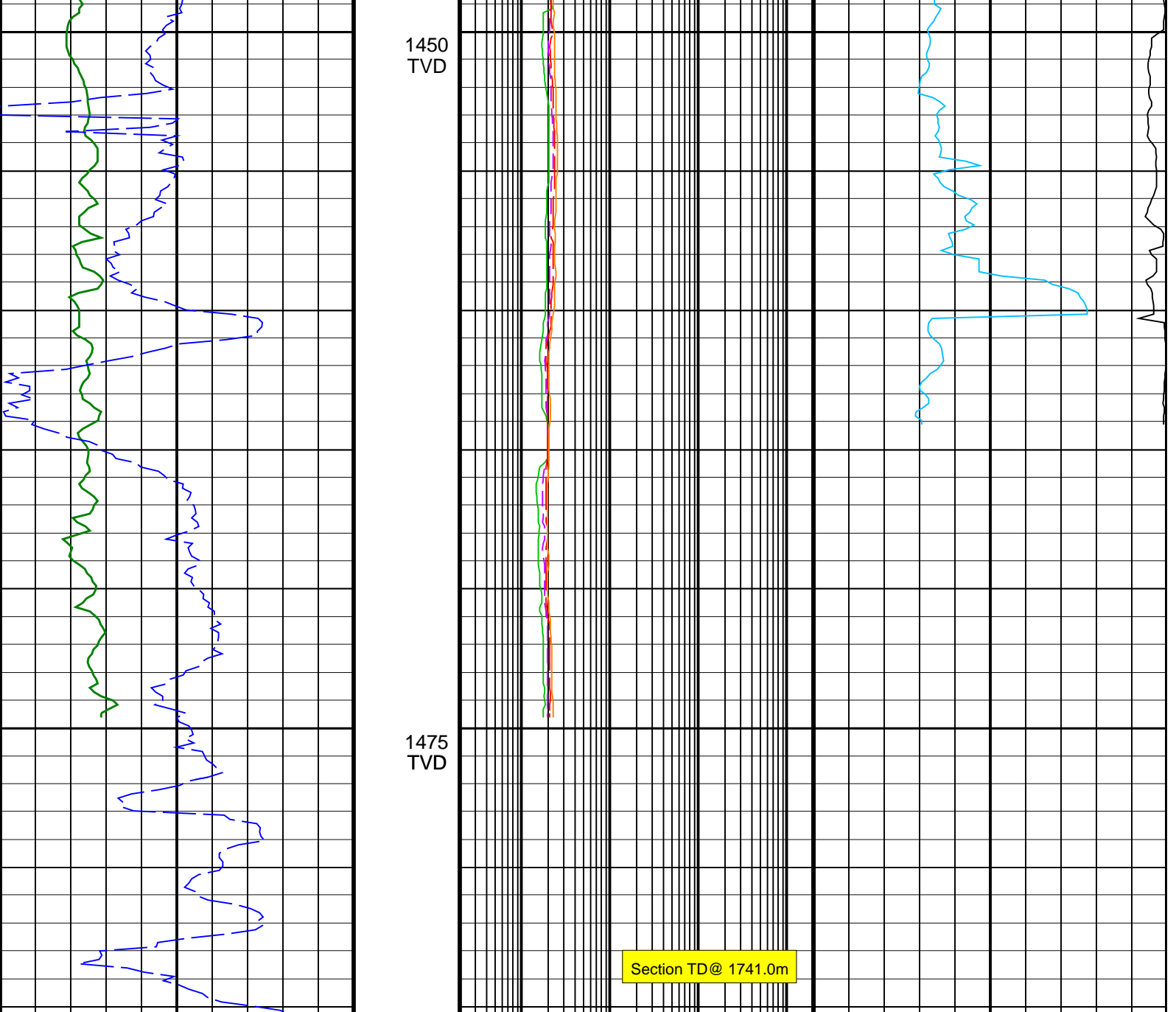




1400  
TVD

1425  
TVD





1450  
TVD

1475  
TVD

Section TD@ 1741.0m

<p><b>ROP*5 (ROP5)</b> (M/HR) 0</p>	<p><b>ARC BHCorr Phase-Shift Resistivity</b> 16-in. at 2 MHz, Real-Time (P16H_RT) 0.2 (OHMM) 2000</p>	<p><b>Coherence at Compressional Peak,</b> Real-Time (CHCO_RT) -4 (----) 1</p>
<p><b>ARC Gamma Ray, Real-Time (ARC_GR_RT)</b> (GAPI) 0 200</p>	<p><b>ARC BHCorr Phase-Shift Resistivity</b> 28-in. at 2 MHz, Real-Time (P28H_RT) 0.2 (OHMM) 2000</p>	<p><b>Delta-T Compressional, Real-Time</b> (DTCO_RT) 140 (US/F) 40</p>
	<p><b>ARC BHCorr Phase-Shift Resistivity</b> 40-in. at 2 MHz, Real-Time (P40H_RT) 0.2 (OHMM) 2000</p>	
	<p><b>ARC BHCorr Attenuation Resistivity</b> 40-in. at 2 MHz, Real-Time (A40H_RT) 0.2 (OHMM) 2000</p>	