

Elver-1_VISION Resistivity RT 500MD

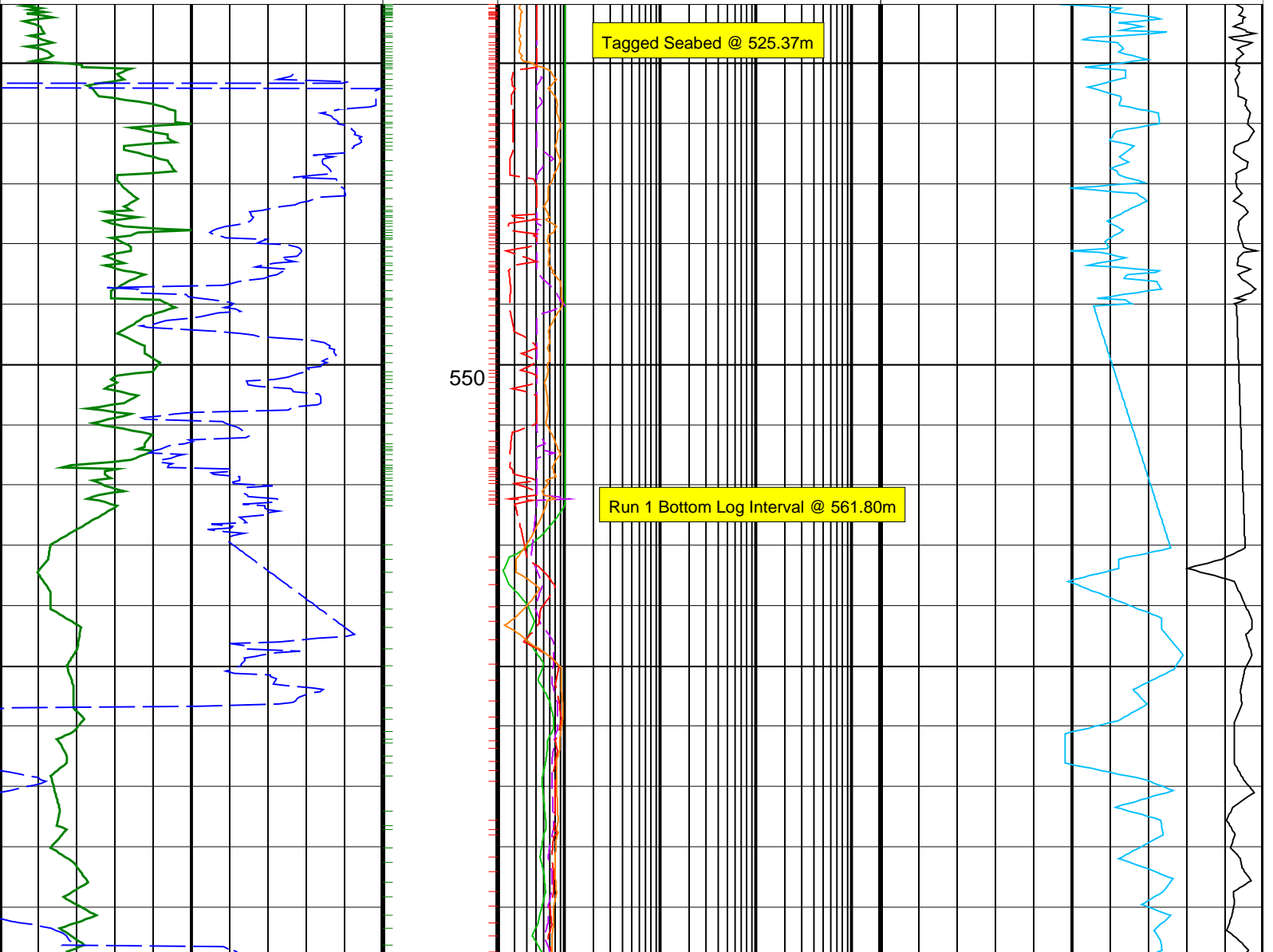
IDEAL Version: ID13_OC_08 <MD> Vertical Scale: 1:500

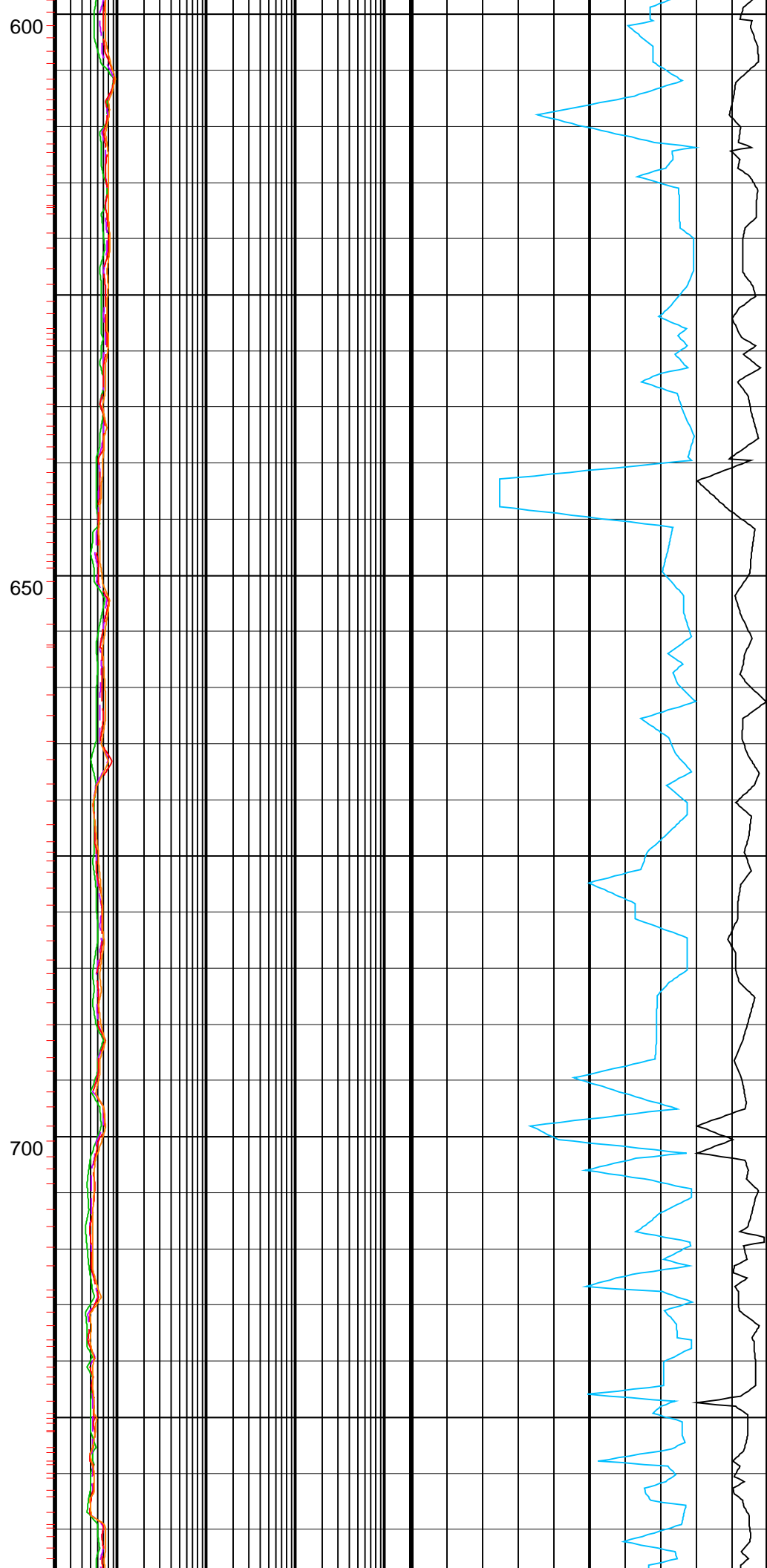
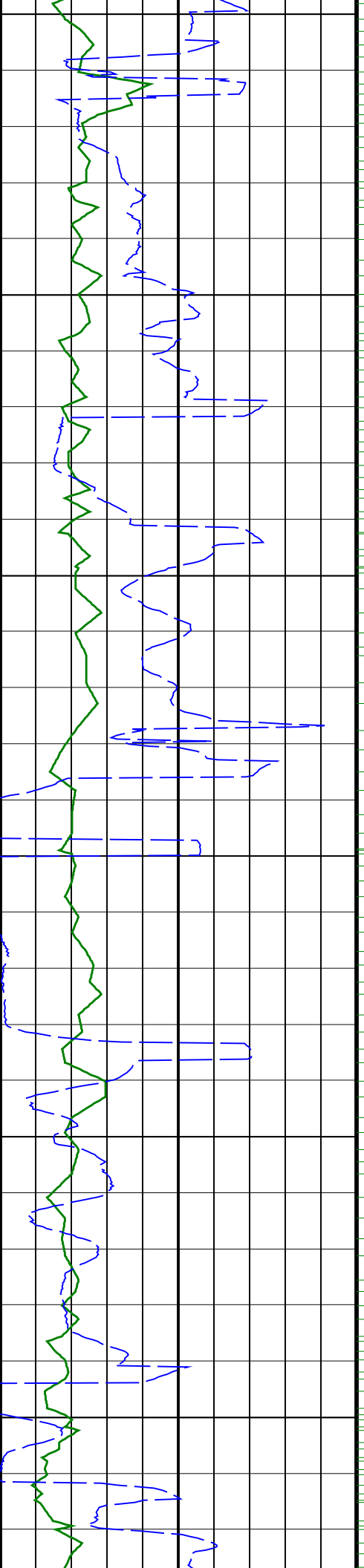
Graphics File Created: 23-Dec-2008 01:16

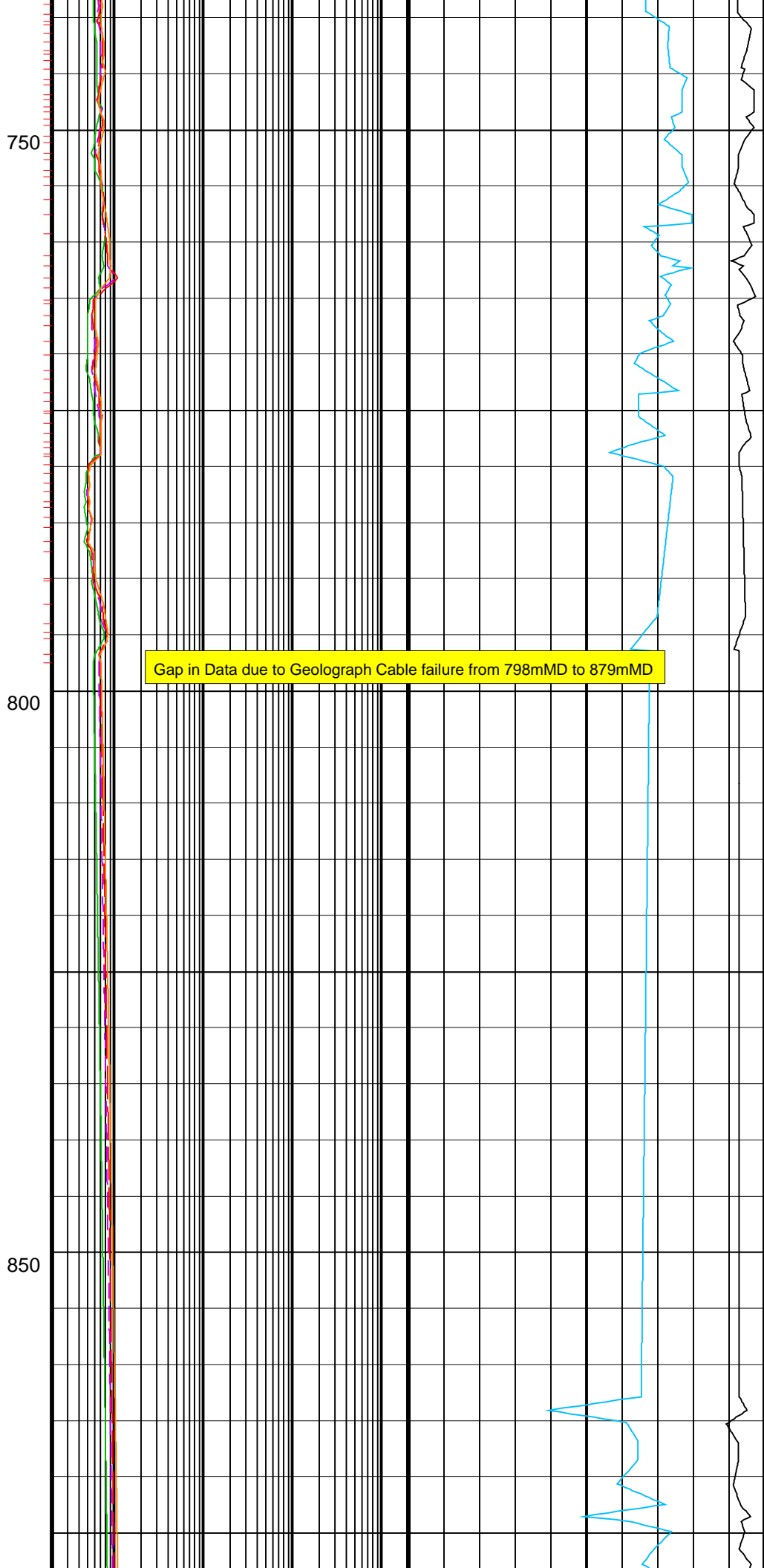
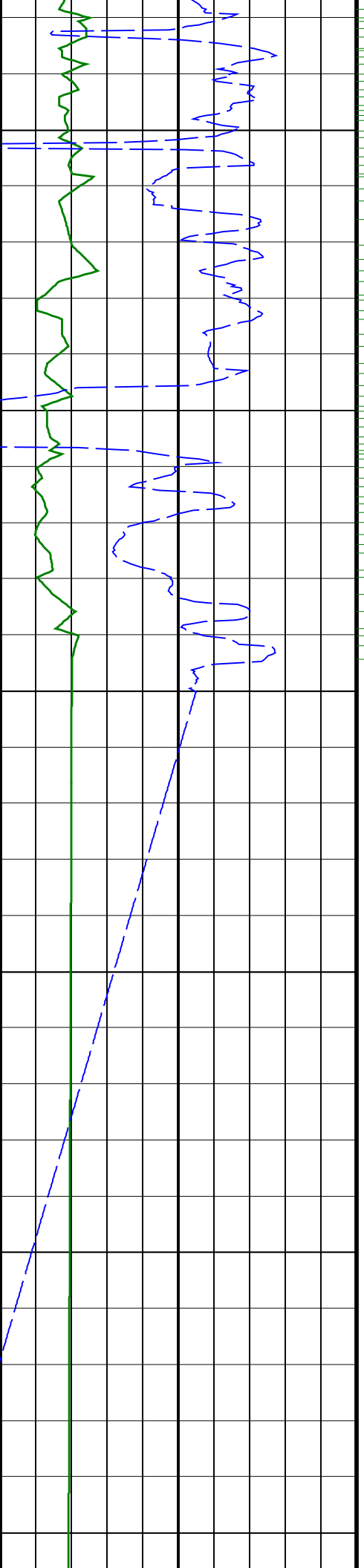
PIP SUMMARY

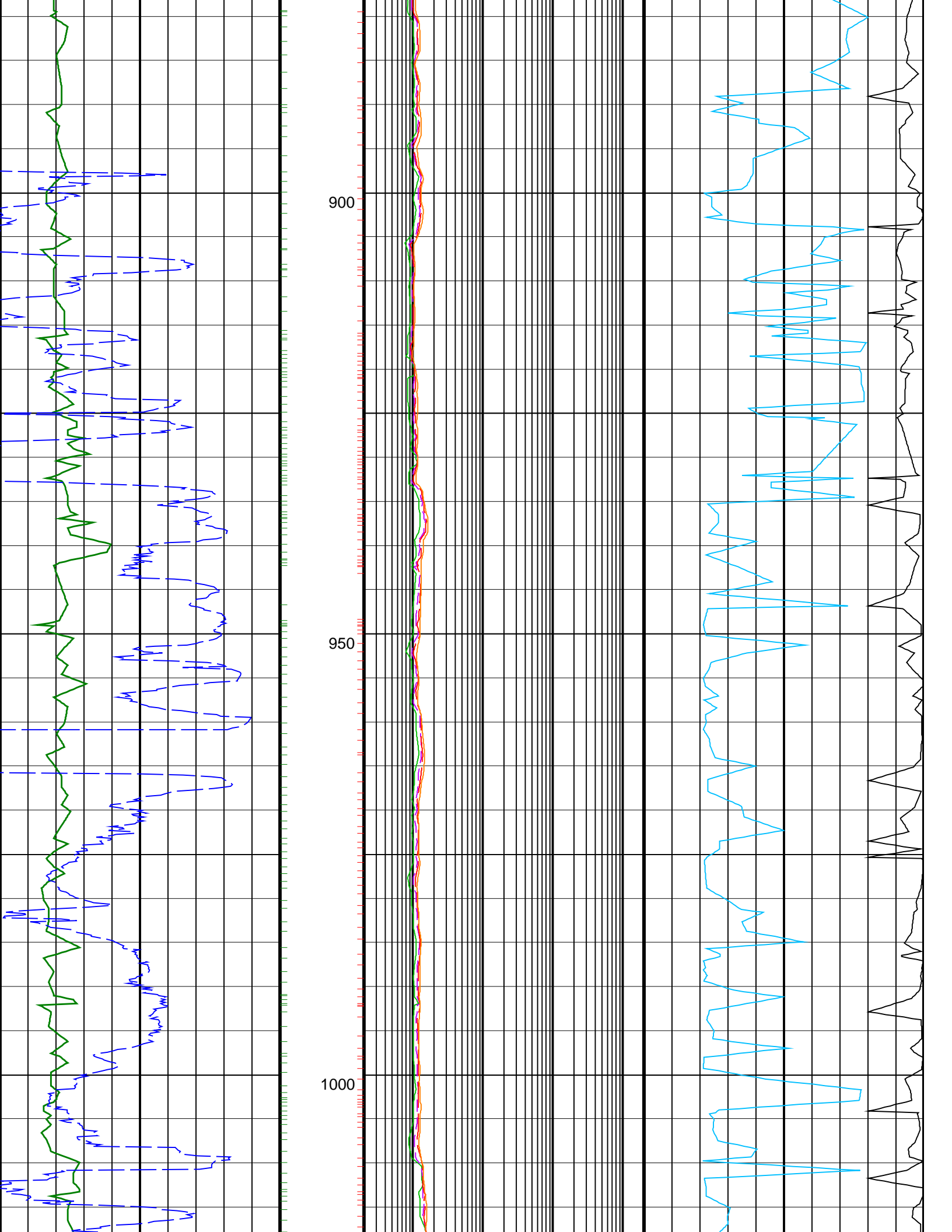
- └ ARC GRAPP PIP
- └ IMP RP16 PIP

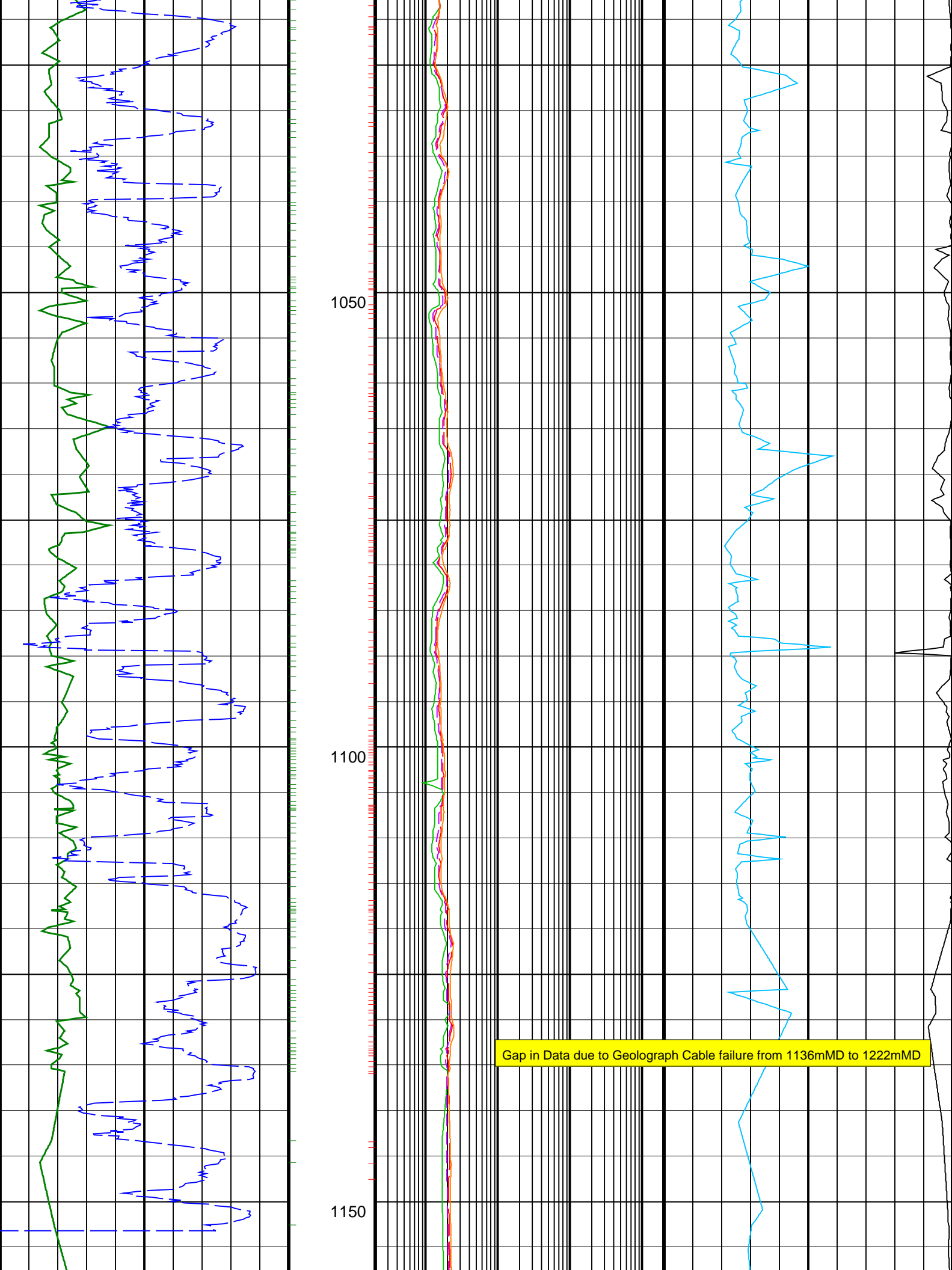
	ARC BHCorr Attenuation Resistivity 40-in. at 2 MHz, Real-Time (A40H_RT) 0.2 (OHMM) 2000	
	ARC BHCorr Phase-Shift Resistivity 40-in. at 2 MHz, Real-Time (P40H_RT) 0.2 (OHMM) 2000	
ARC Gamma Ray, Real-Time (ARC_GR_RT) 0 (GAPI) 200	ARC BHCorr Phase-Shift Resistivity 28-in. at 2 MHz, Real-Time (P28H_RT) 0.2 (OHMM) 2000	Delta-T Compressional, Real-Time (DTCO_RT) 140 (US/F) 40
200 ROP*5 (ROP5) (M/HR) 0	ARC BHCorr Phase-Shift Resistivity 16-in. at 2 MHz, Real-Time (P16H_RT) 0.2 (OHMM) 2000	Coherence at Compressional Peak, Real-Time (CHCO_RT) -4 (----) 1

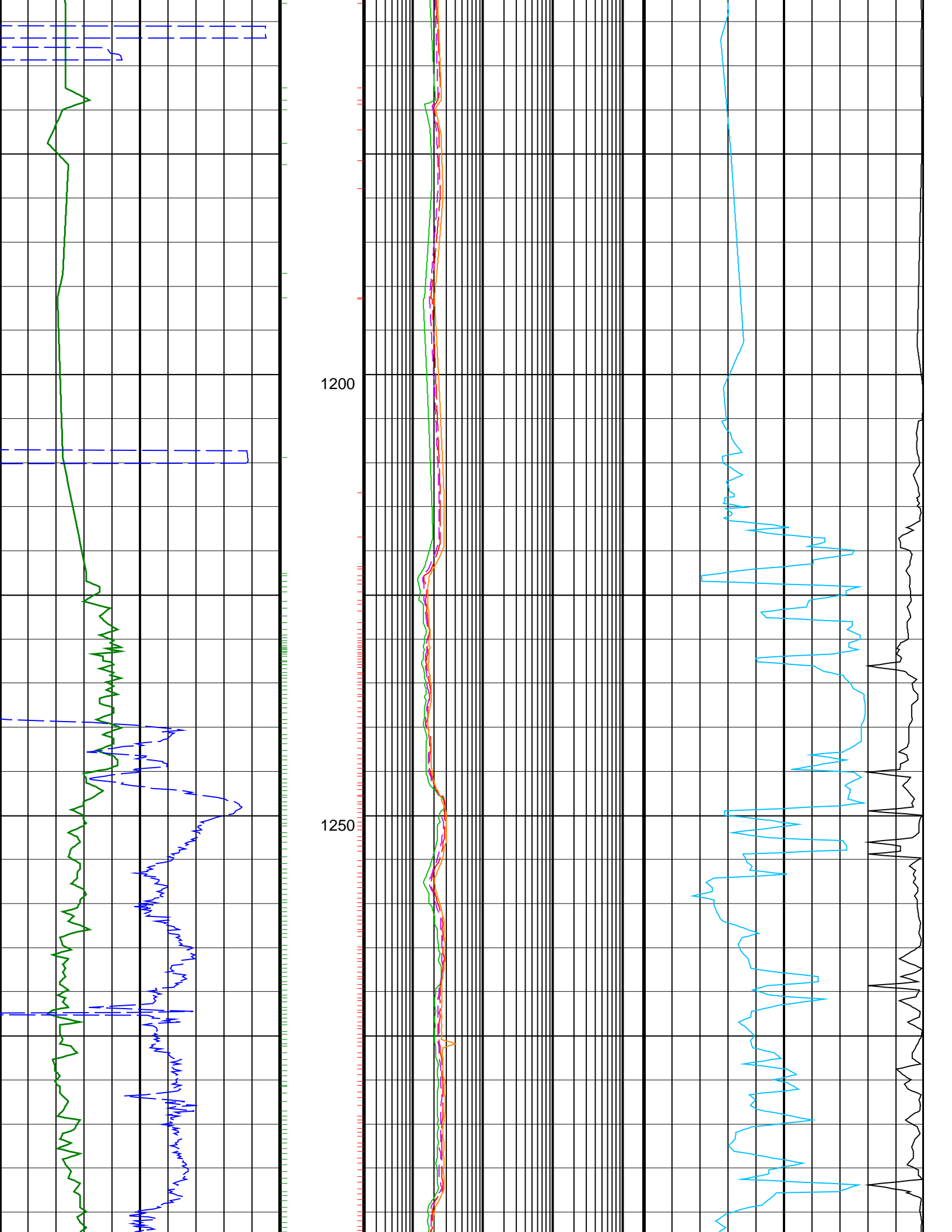


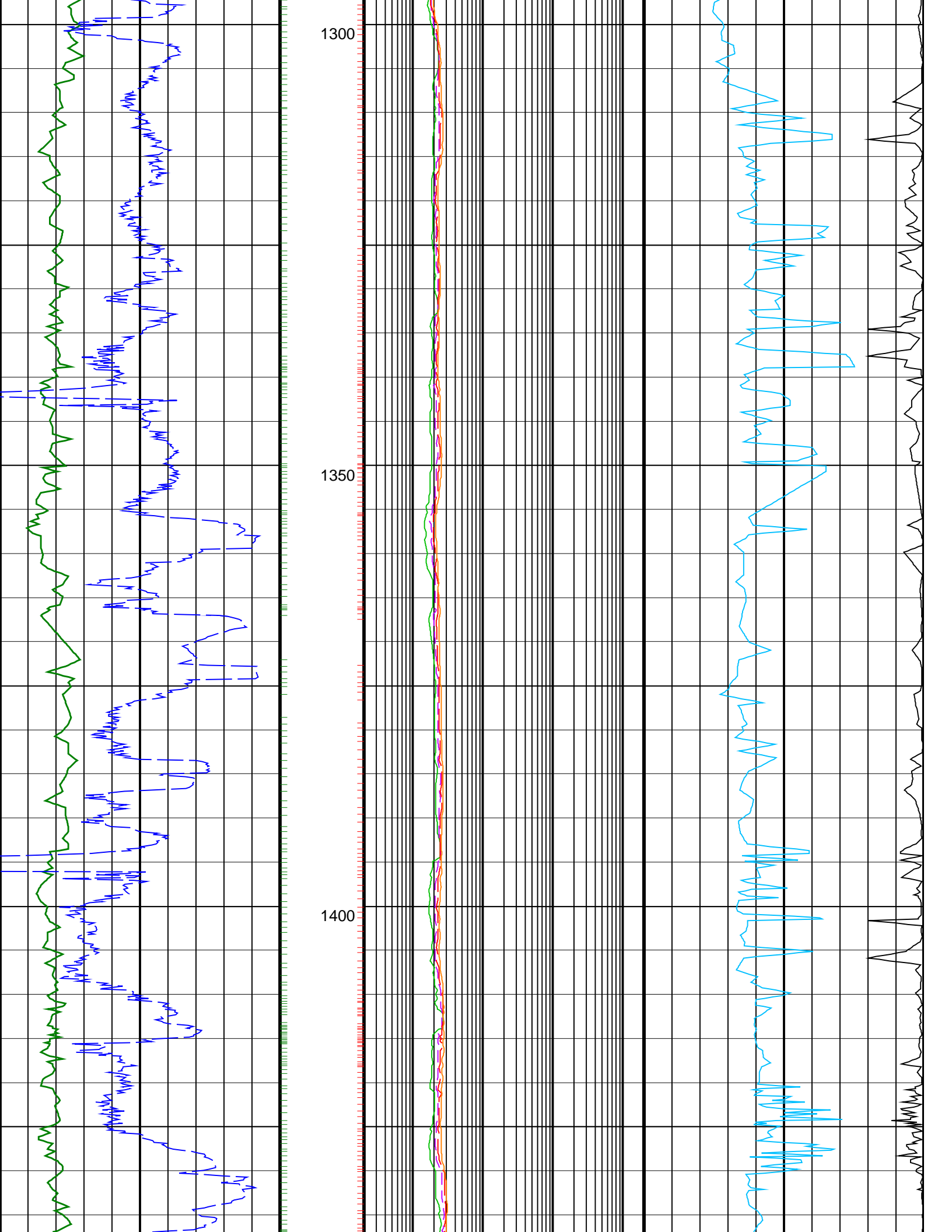


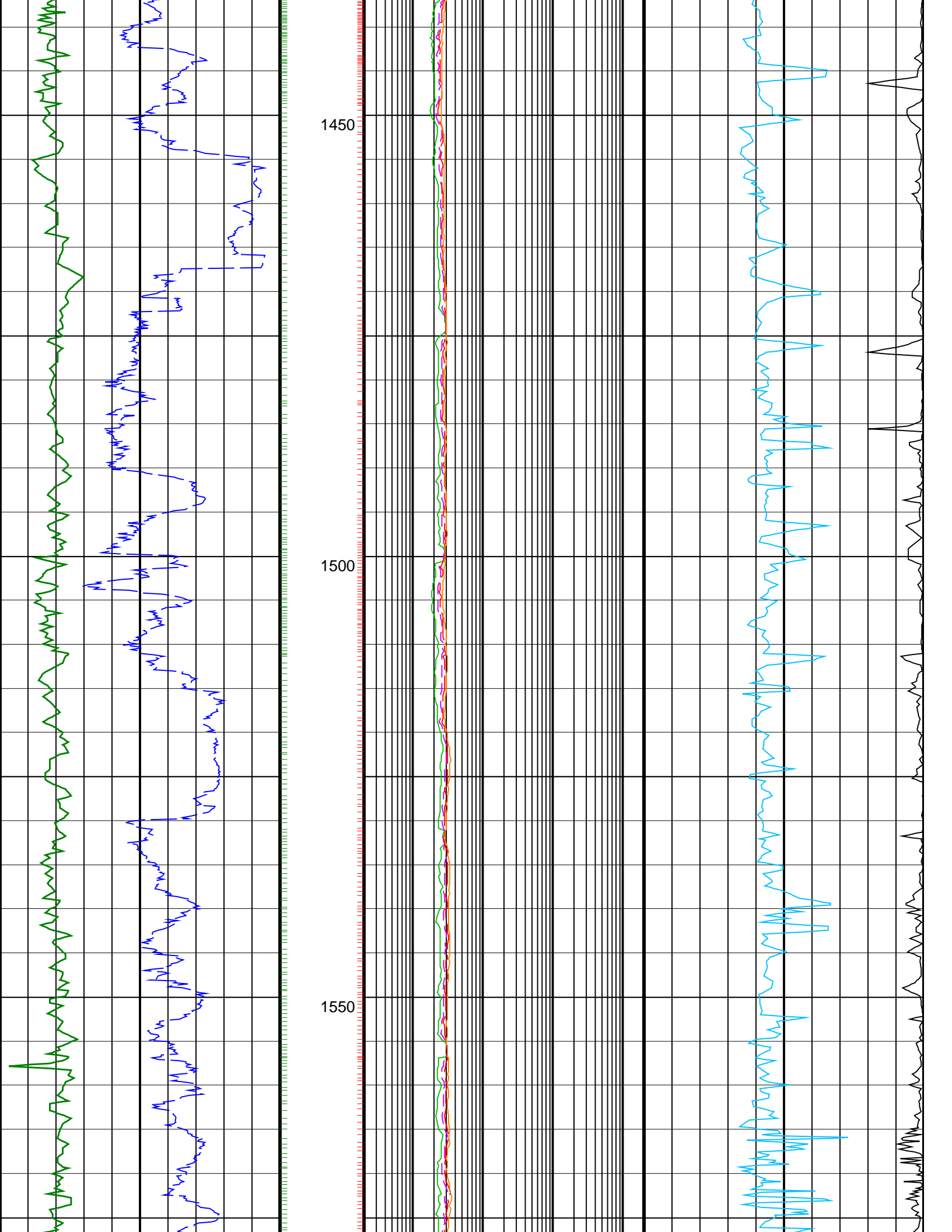


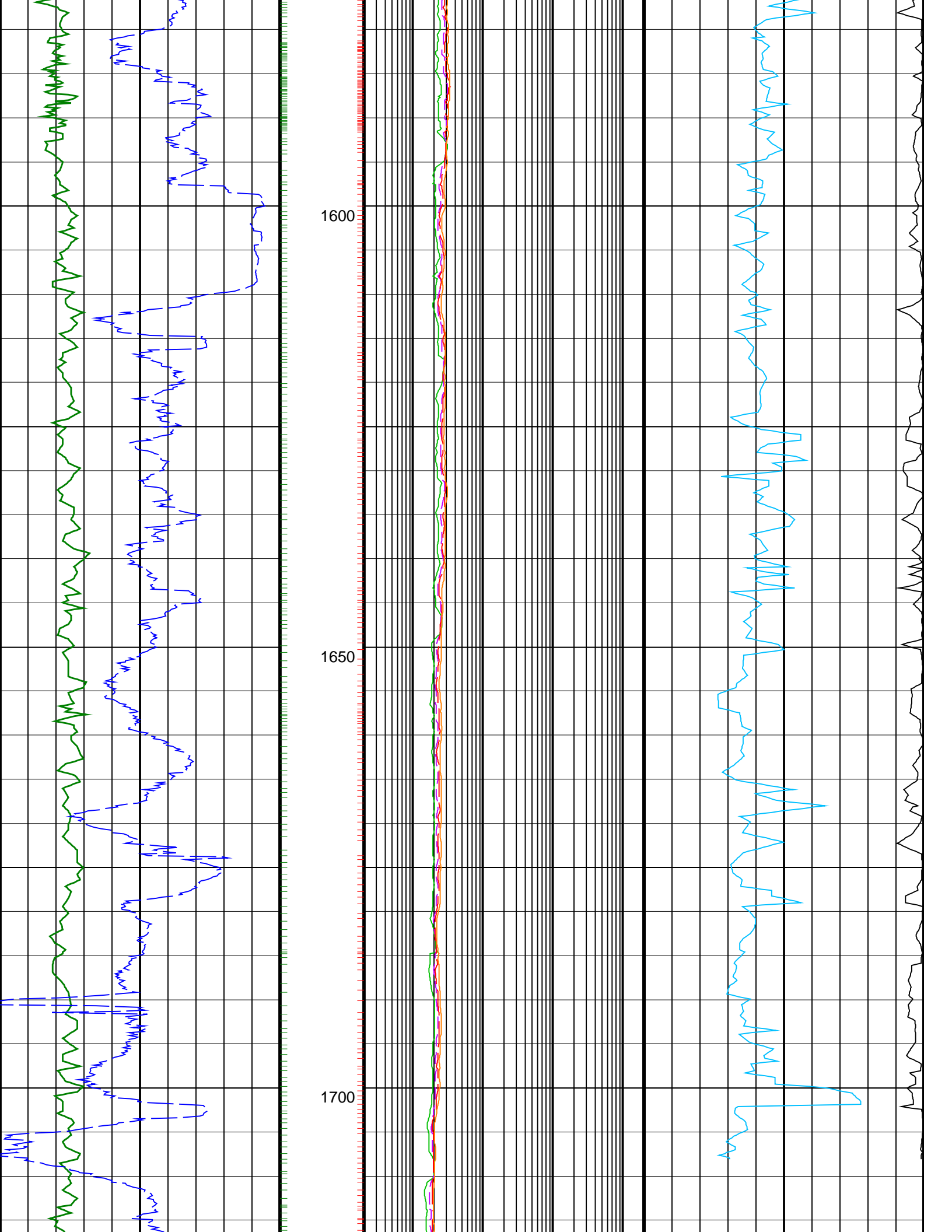


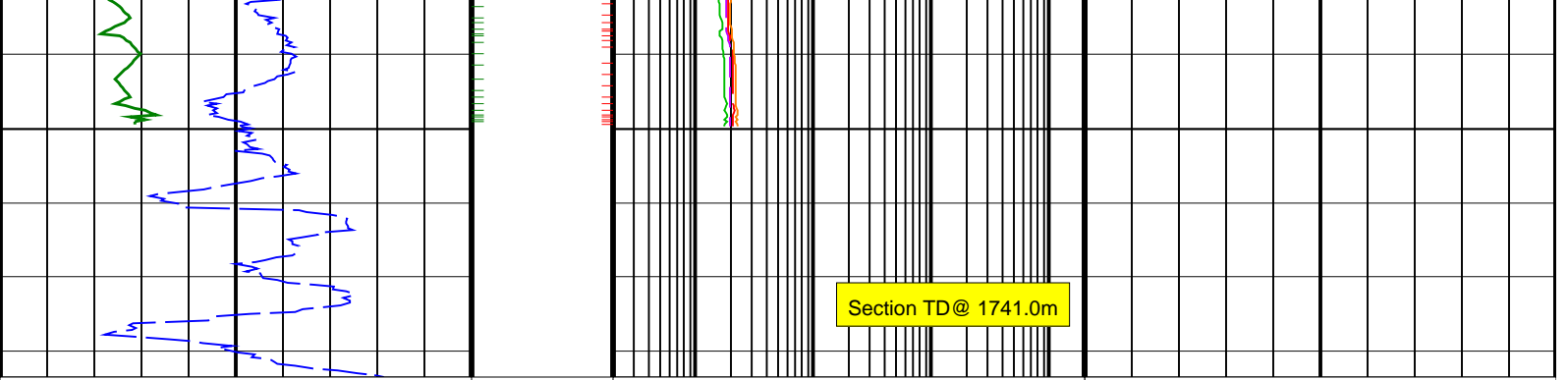












<p>ROP*5 (ROP5) (M/HR)</p> <p>200 0</p>	<p>ARC BHCorr Phase-Shift Resistivity 16-in. at 2 MHz, Real-Time (P16H_RT) 0.2 (OHMM) 2000</p>	<p>Coherence at Compressional Peak, Real-Time (CHCO_RT) -4 (----) 1</p>
<p>ARC Gamma Ray, Real-Time (ARC_GR_RT) (GAPI)</p> <p>0 200</p>	<p>ARC BHCorr Phase-Shift Resistivity 28-in. at 2 MHz, Real-Time (P28H_RT) 0.2 (OHMM) 2000</p>	<p>Delta-T Compressional, Real-Time (DTCO_RT) 140 (US/F) 40</p>
	<p>ARC BHCorr Phase-Shift Resistivity 40-in. at 2 MHz, Real-Time (P40H_RT) 0.2 (OHMM) 2000</p>	
	<p>ARC BHCorr Attenuation Resistivity 40-in. at 2 MHz, Real-Time (A40H_RT) 0.2 (OHMM) 2000</p>	

PIP SUMMARY

- └ ARC GRAPP PIP
- └ IMP RP16 PIP