

Elver-1_VISION Resistivity RT 200MD

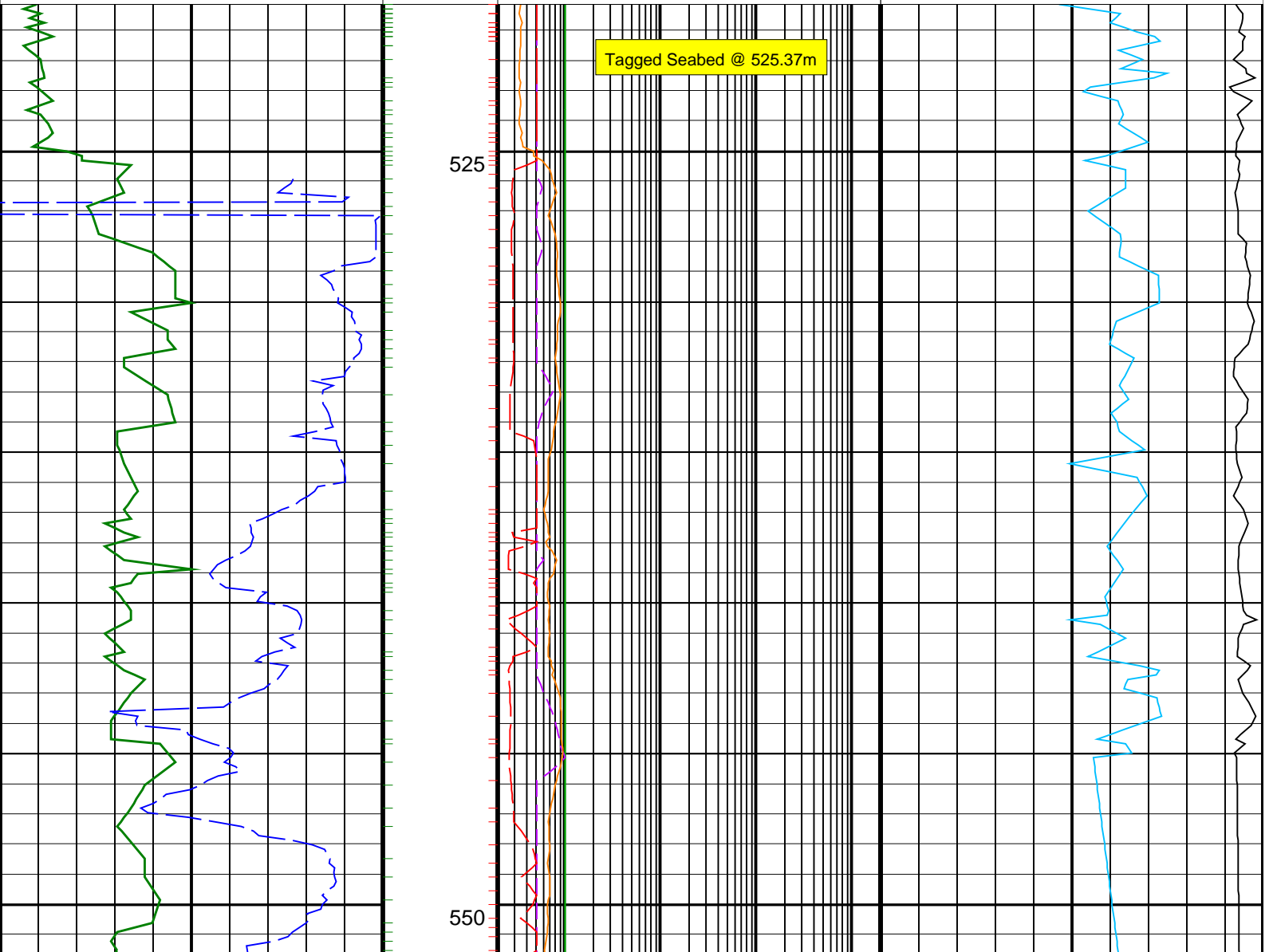
IDEAL Version: ID13_0C_08 <MD > Vertical Scale: 1:200

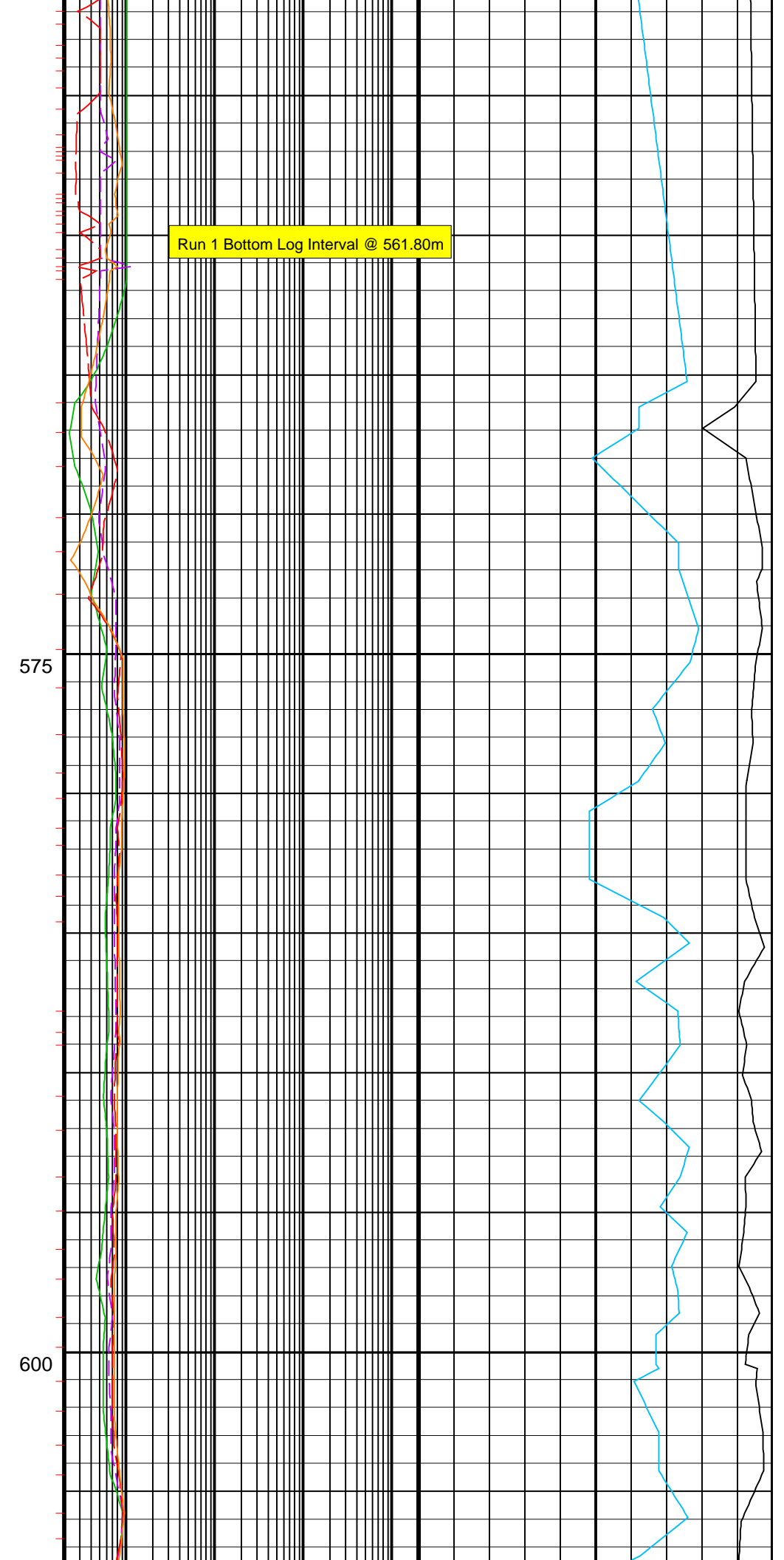
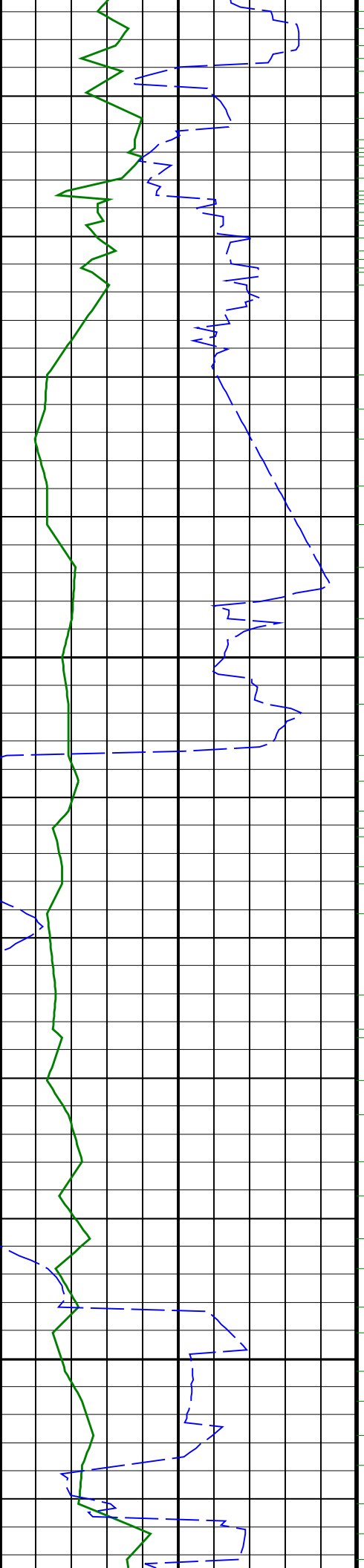
Graphics File Created: 23-Dec-2008 01:16

PIP SUMMARY

- └ ARC GRAPP PIP
- └ IMP RP16 PIP

	ARC BHCorr Attenuation Resistivity 40-in. at 2 MHz, Real-Time (A40H_RT) 0.2 (OHMM) 2000	
	ARC BHCorr Phase-Shift Resistivity 40-in. at 2 MHz, Real-Time (P40H_RT) 0.2 (OHMM) 2000	
ARC Gamma Ray, Real-Time (ARC_GR_RT) 0 (GAPI) 200	ARC BHCorr Phase-Shift Resistivity 28-in. at 2 MHz, Real-Time (P28H_RT) 0.2 (OHMM) 2000	Delta-T Compressional, Real-Time (DTCO_RT) 140 (US/F) 40
ROP*5 (ROP5) 200 (M/HR) 0	ARC BHCorr Phase-Shift Resistivity 16-in. at 2 MHz, Real-Time (P16H_RT) 0.2 (OHMM) 2000	Coherence at Compressional Peak, Real-Time (CHCO_RT) -4 (----) 1

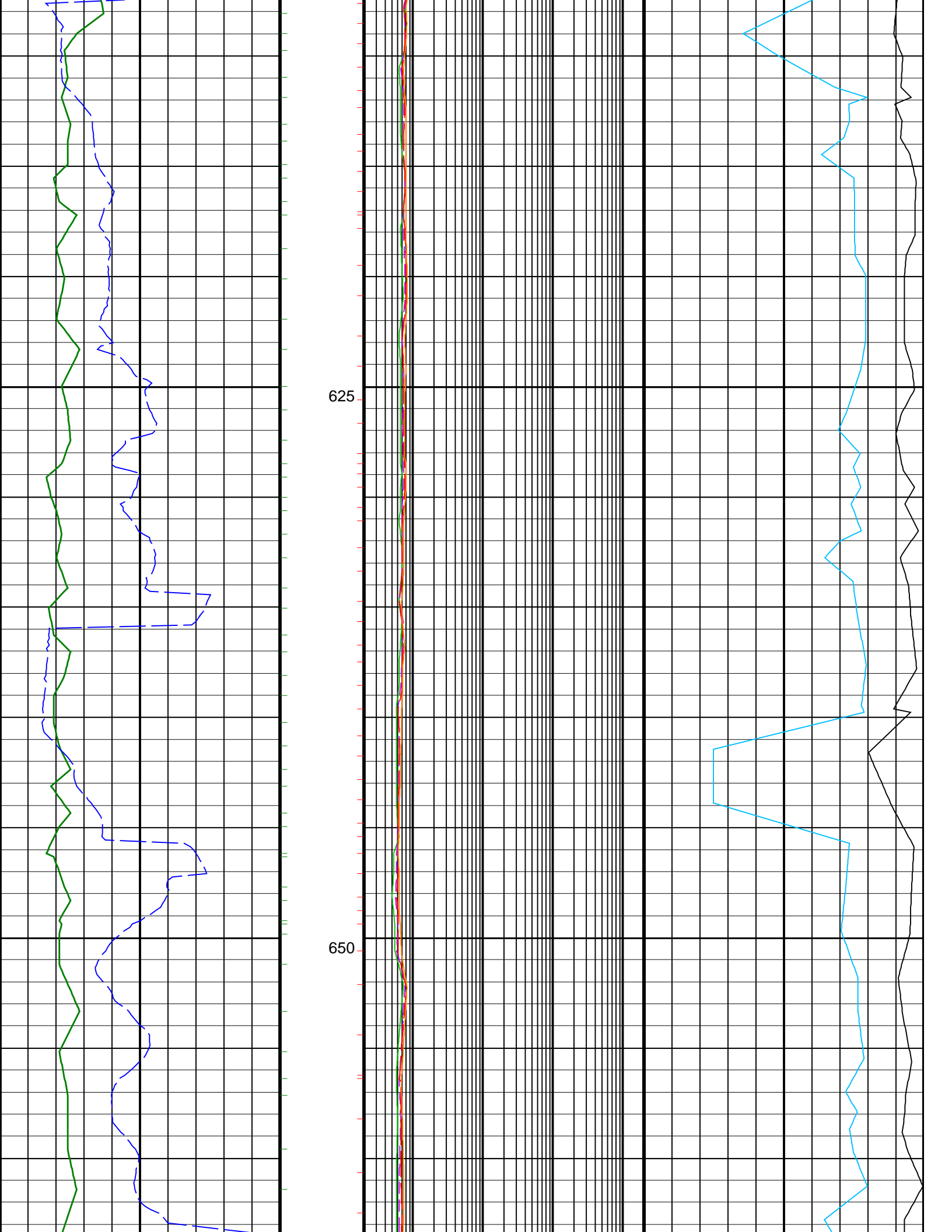


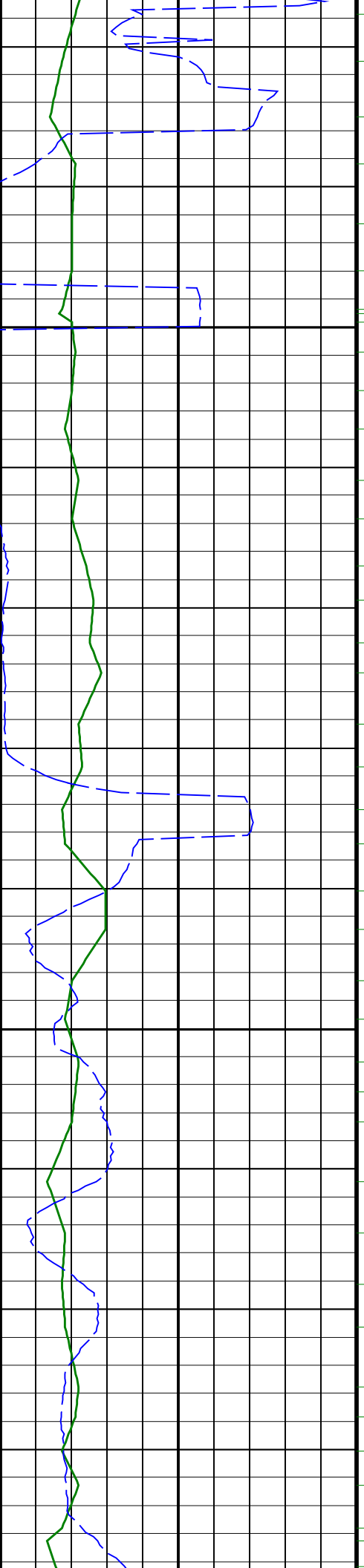


Run 1 Bottom Log Interval @ 561.80m

575

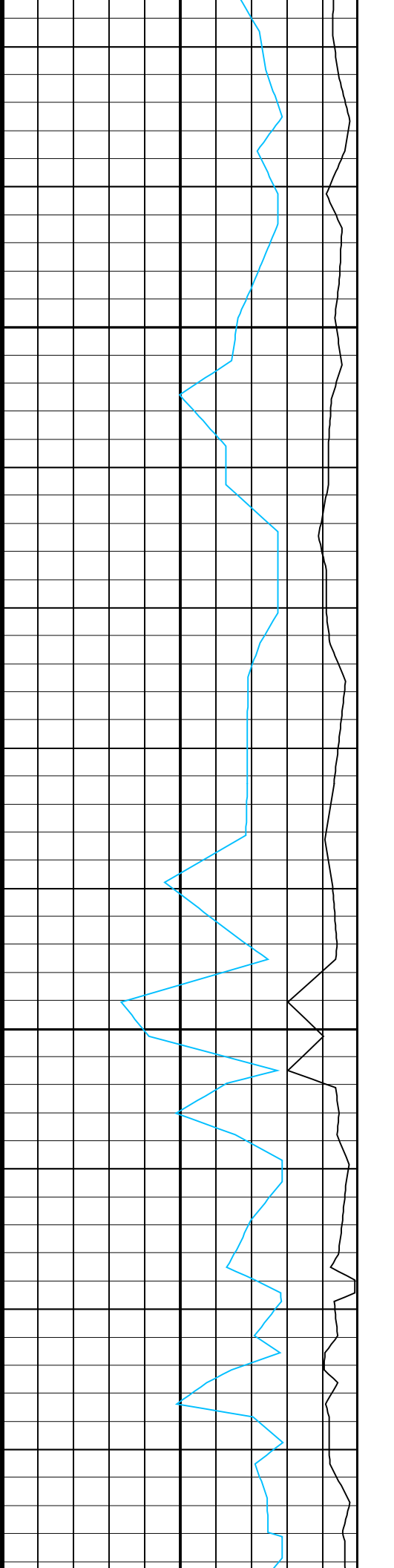
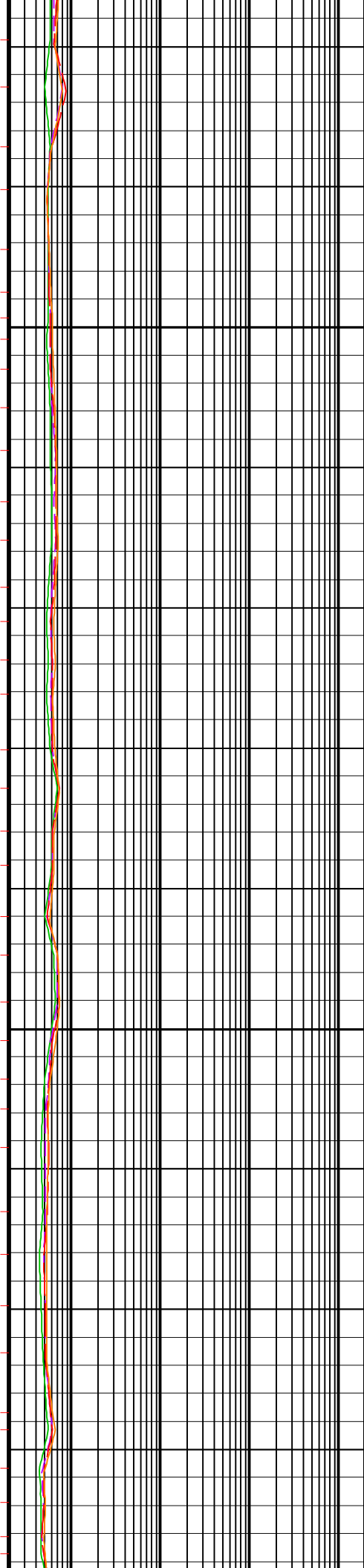
600

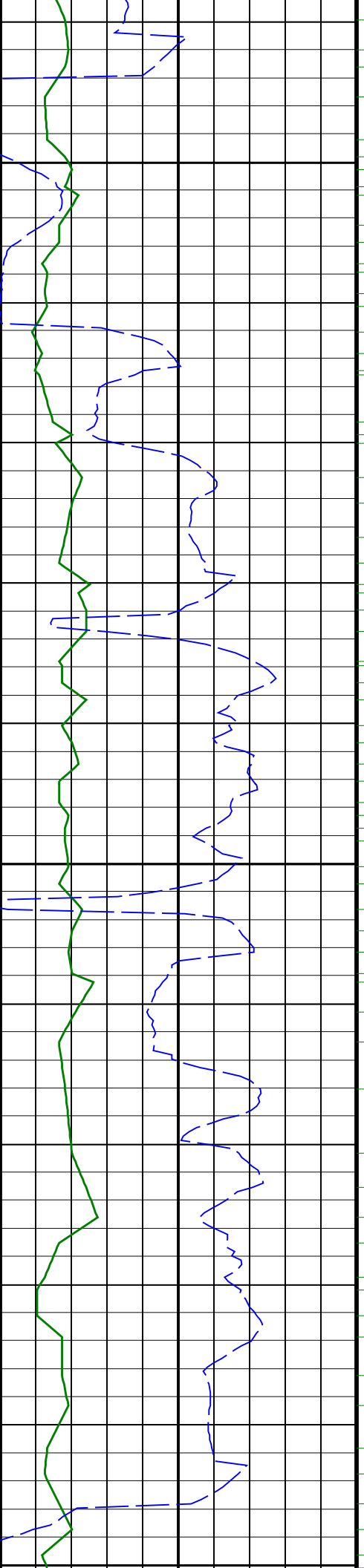




675

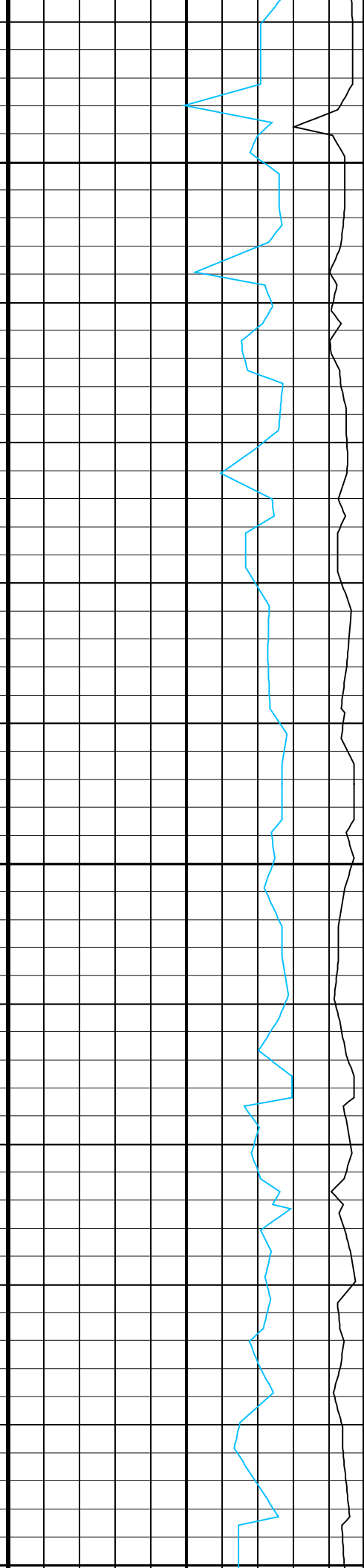
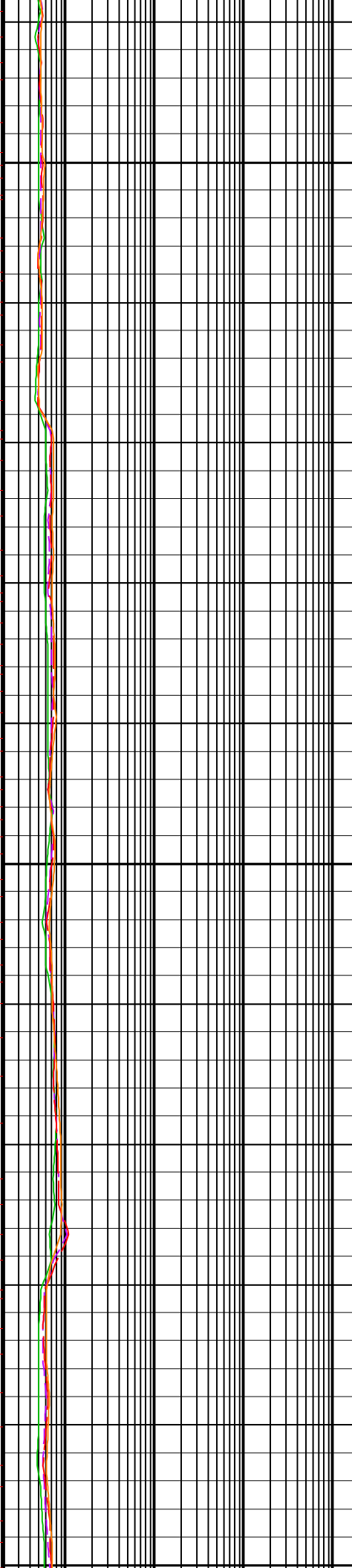
700

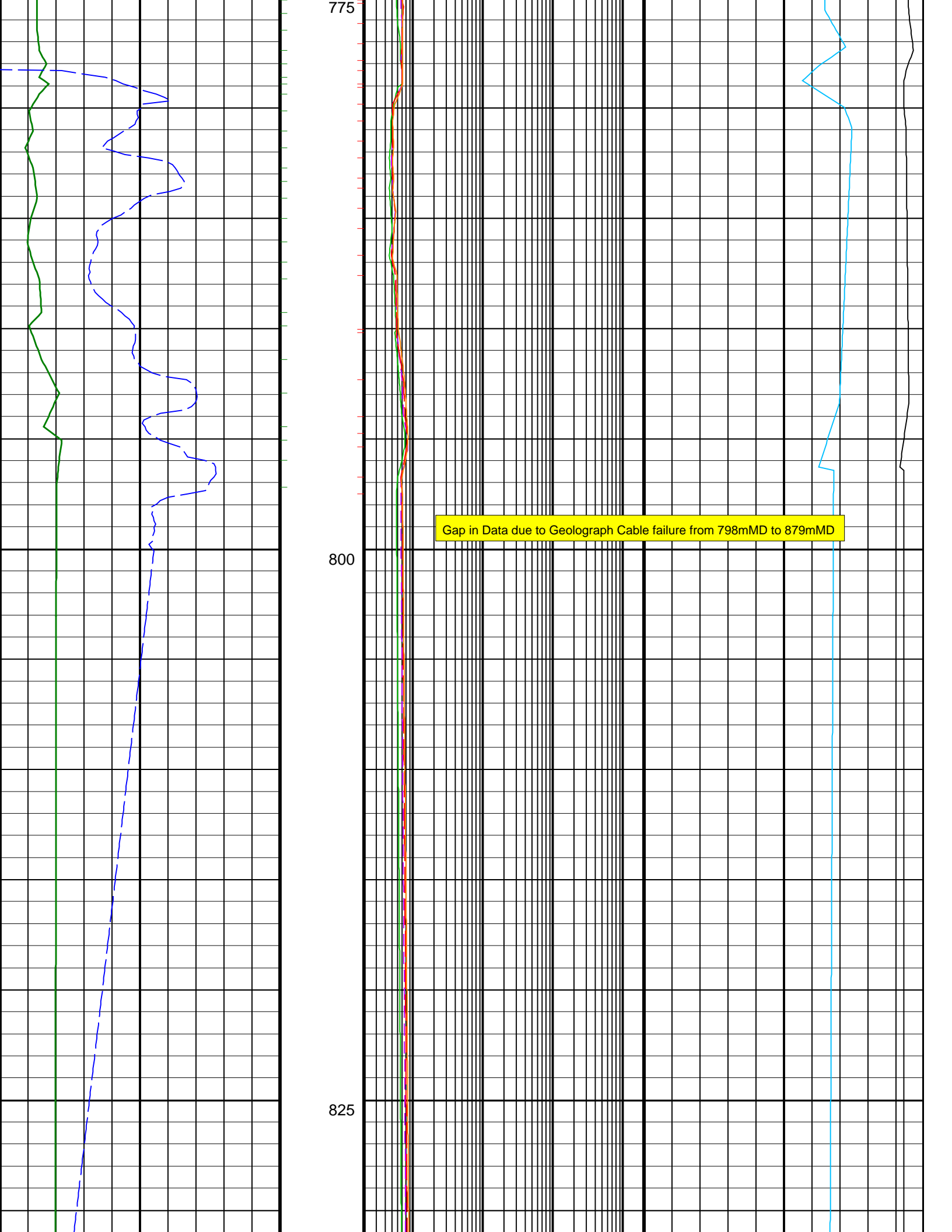


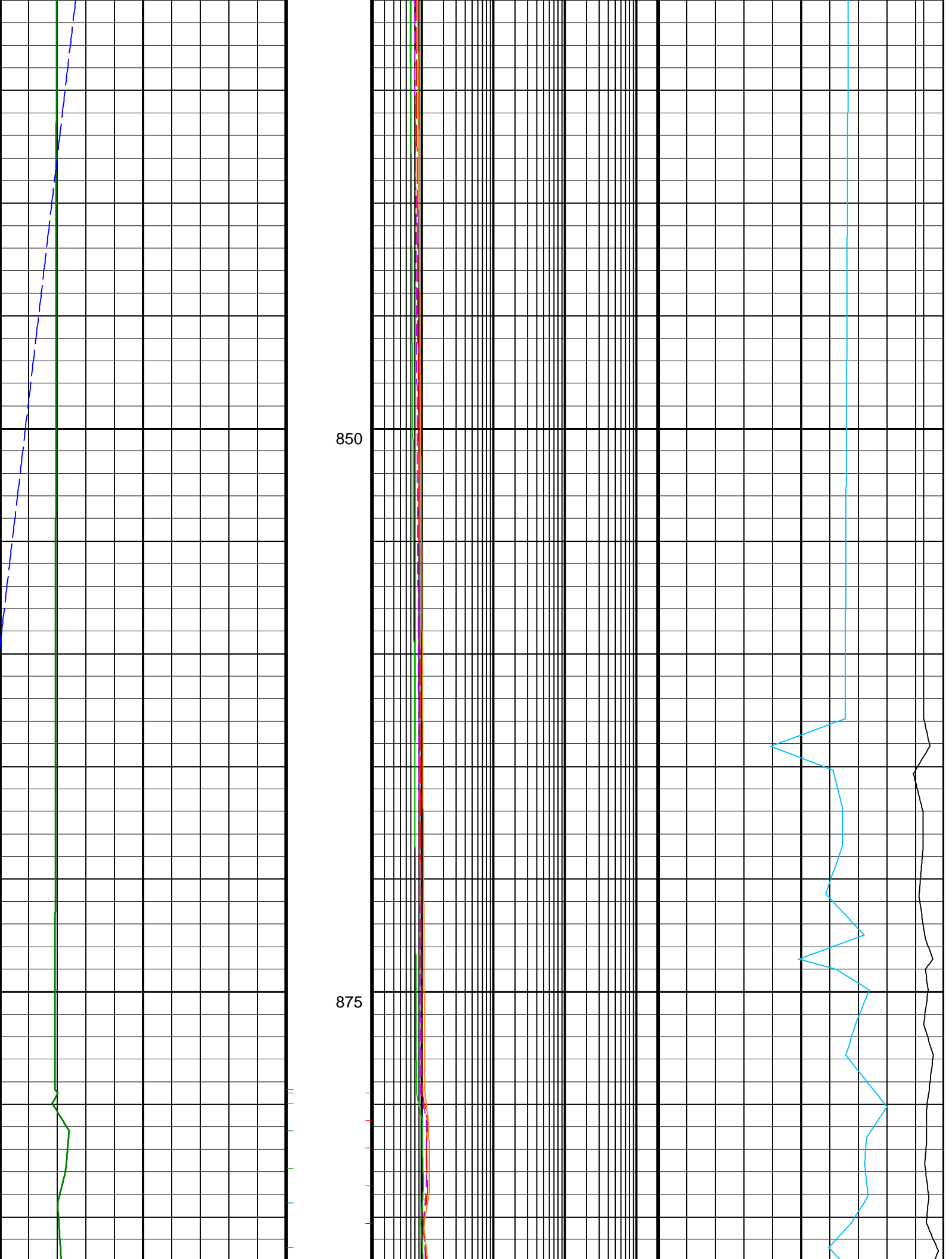


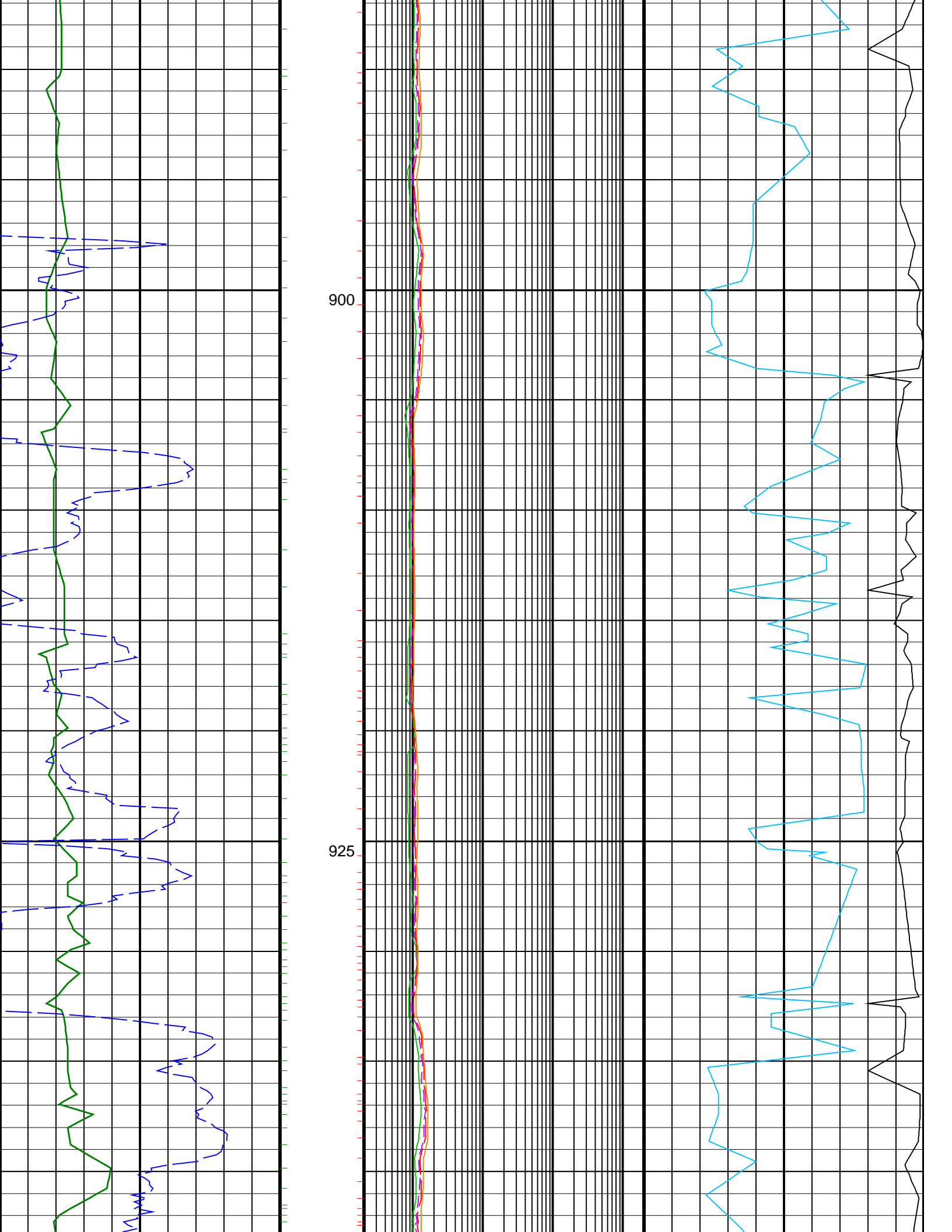
725

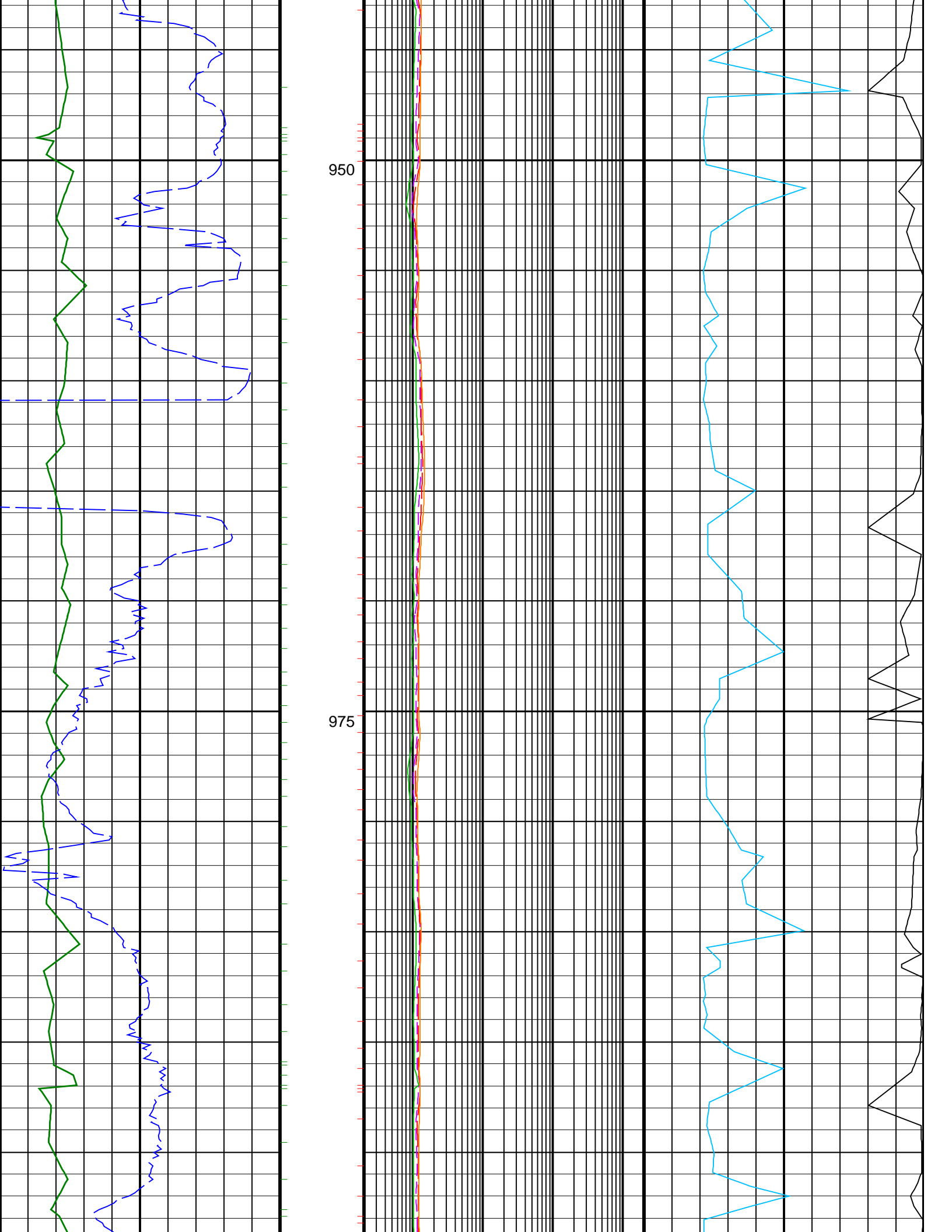
750

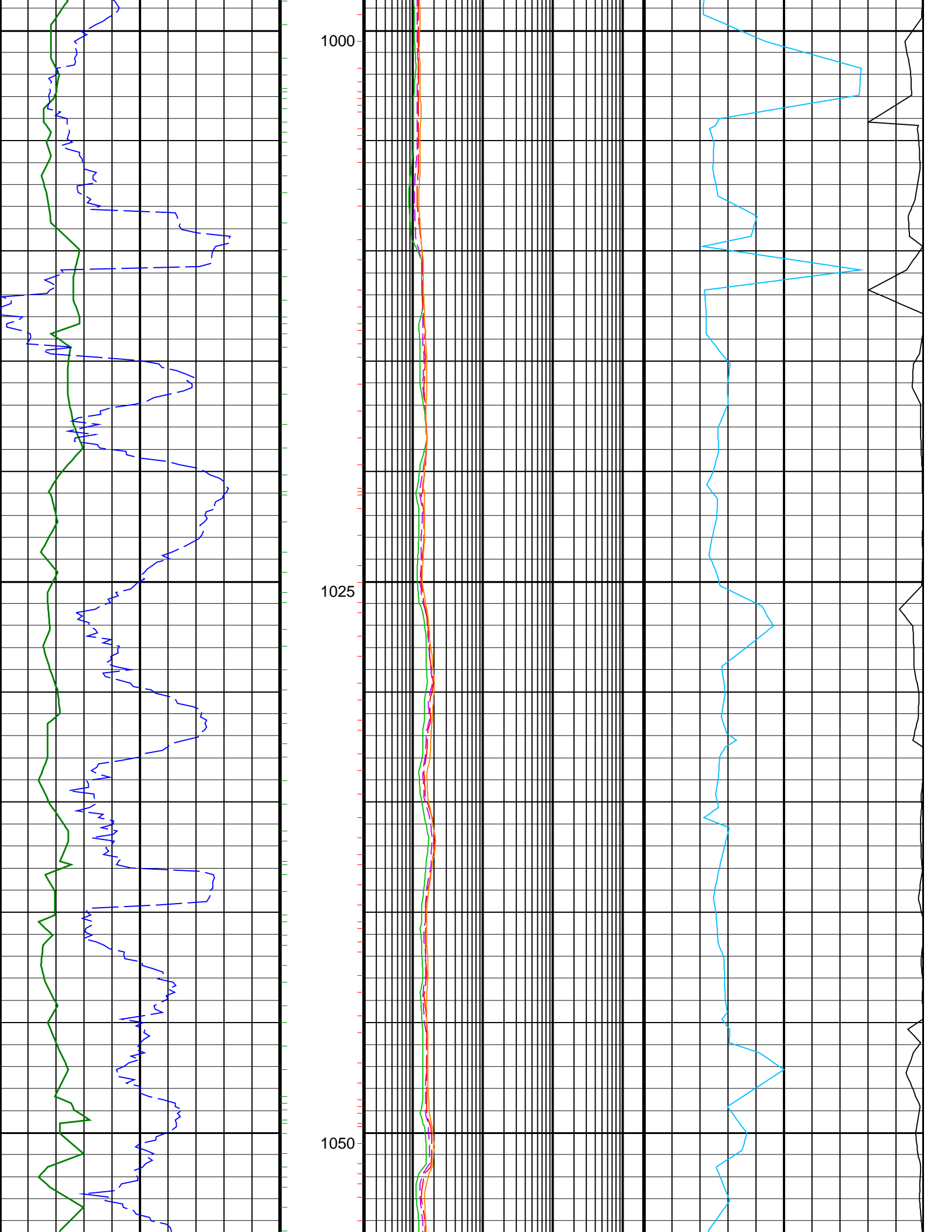


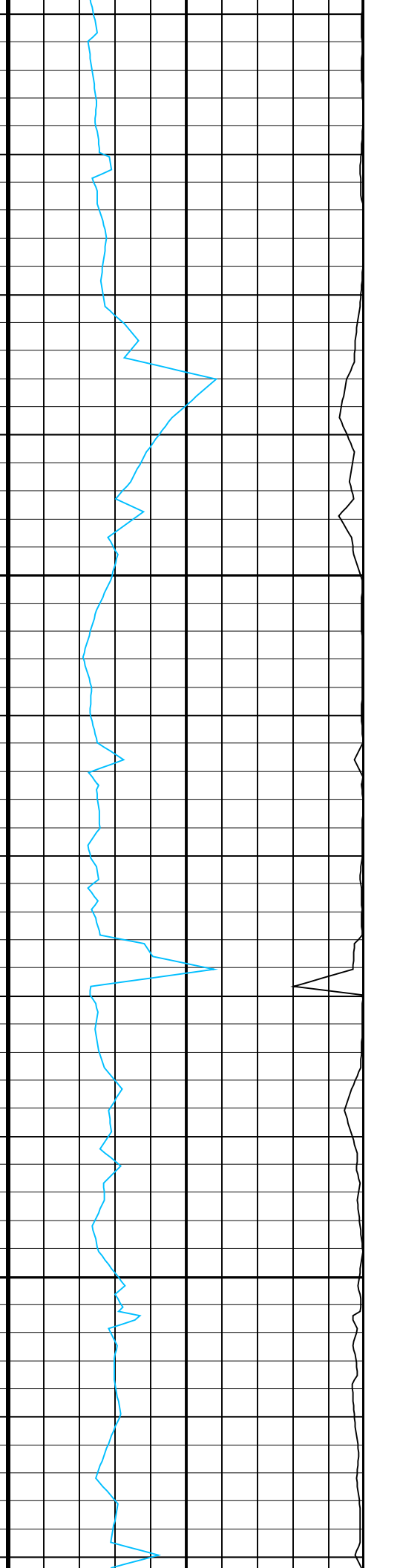
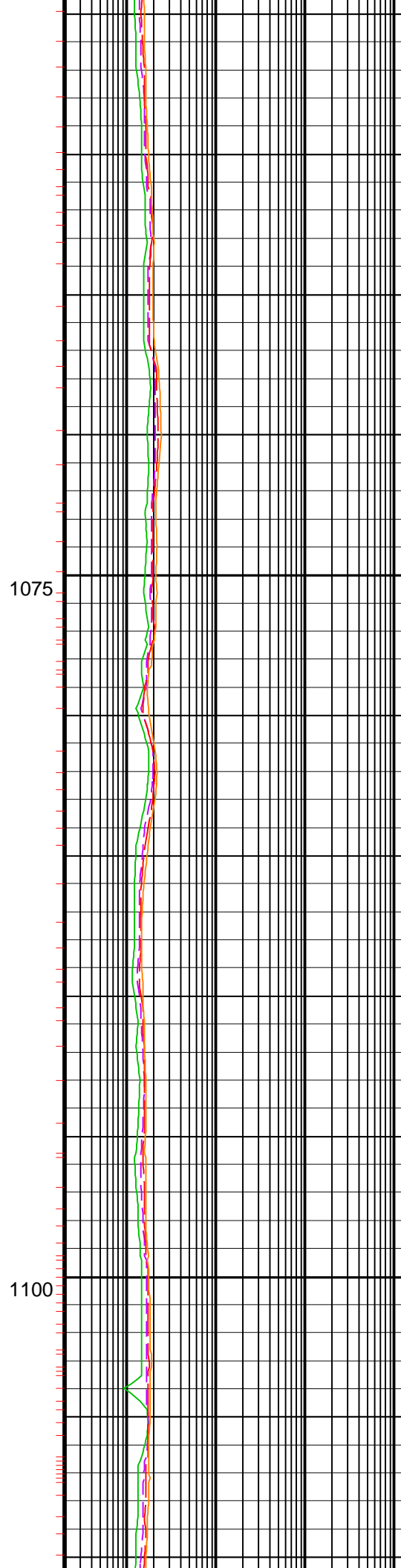
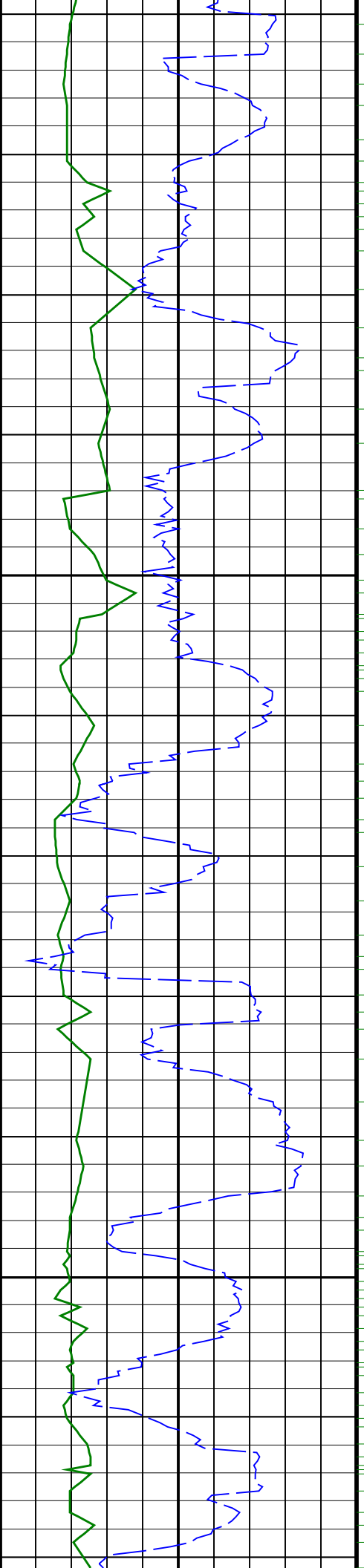


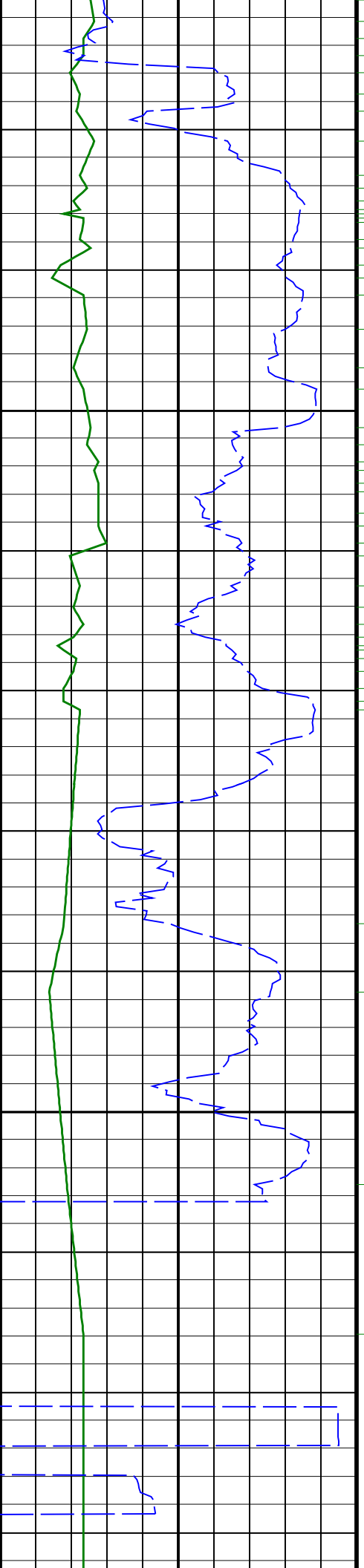






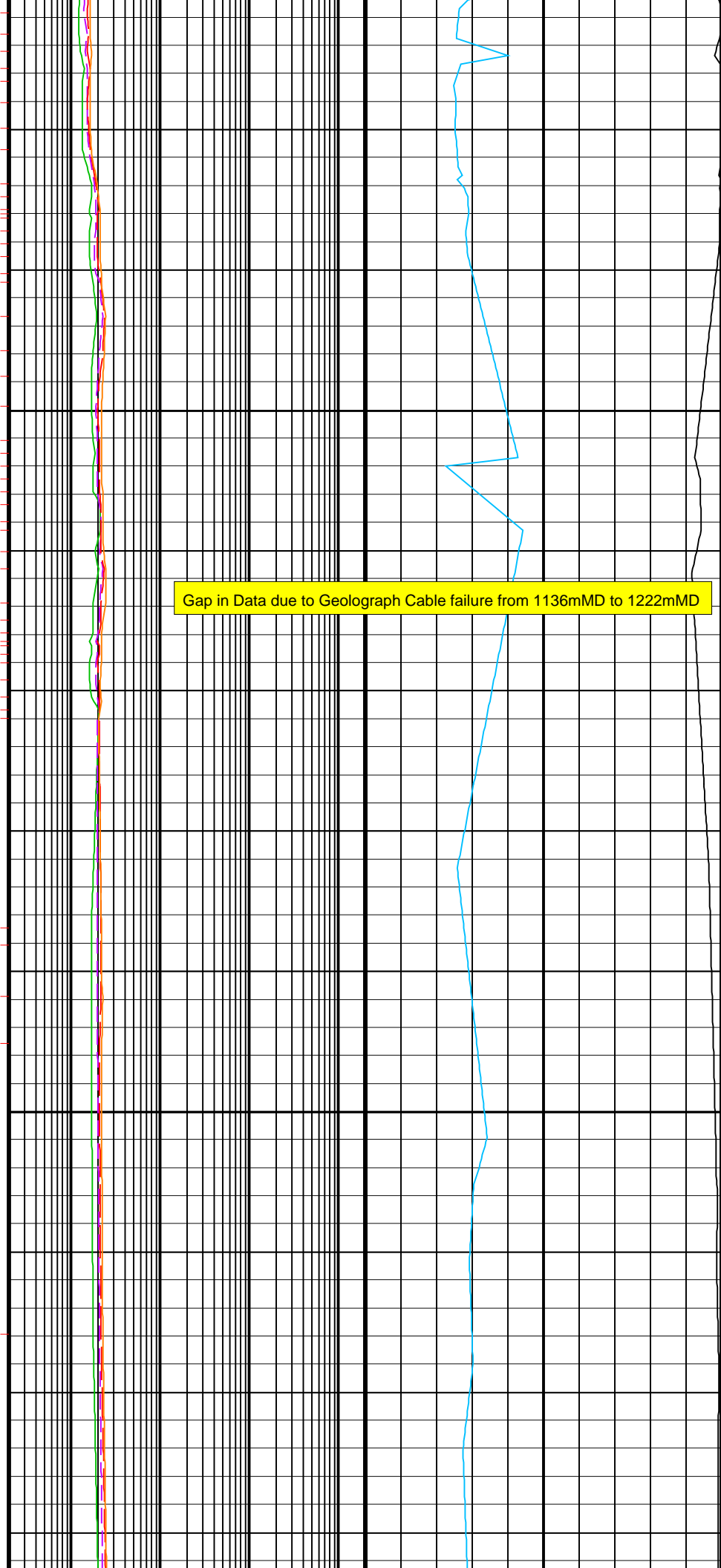




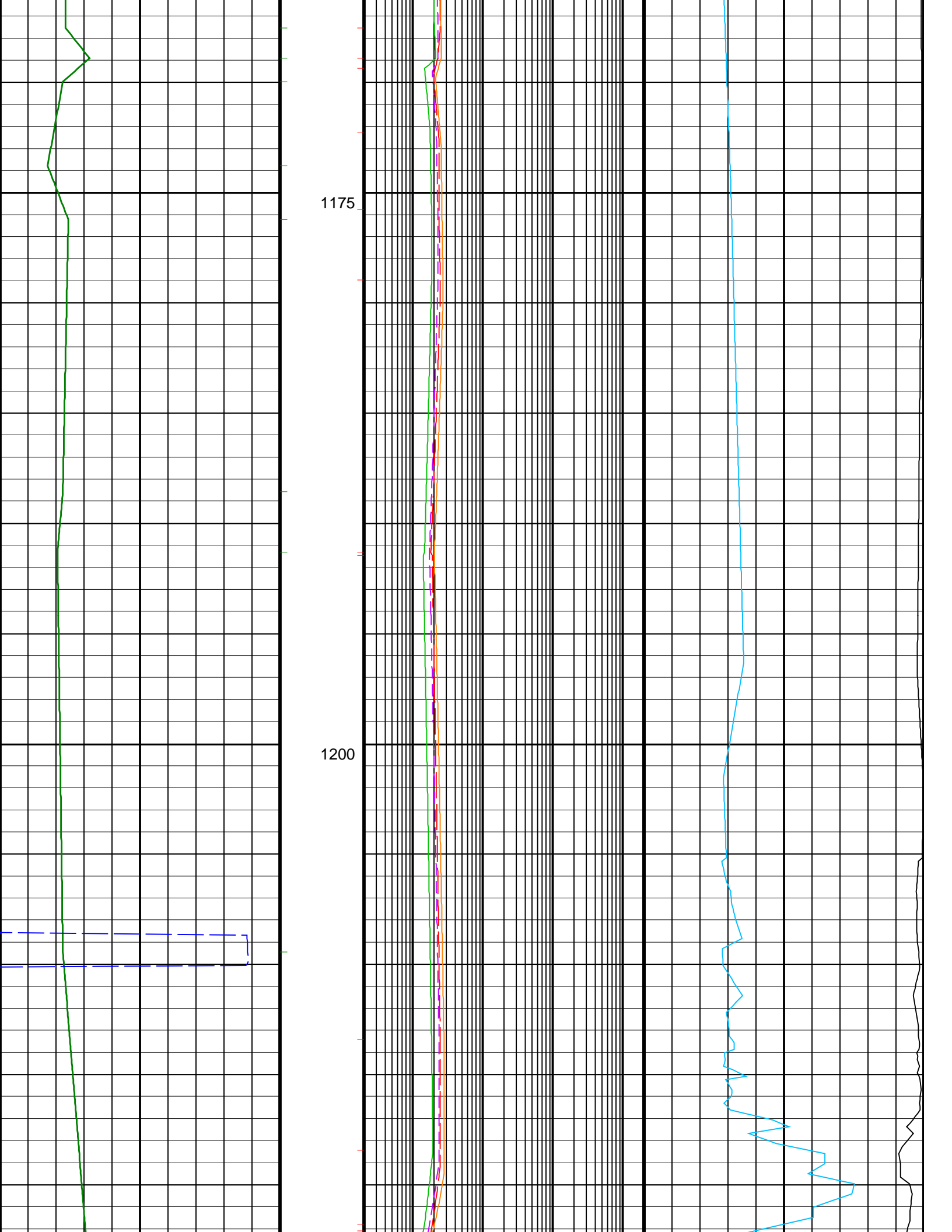


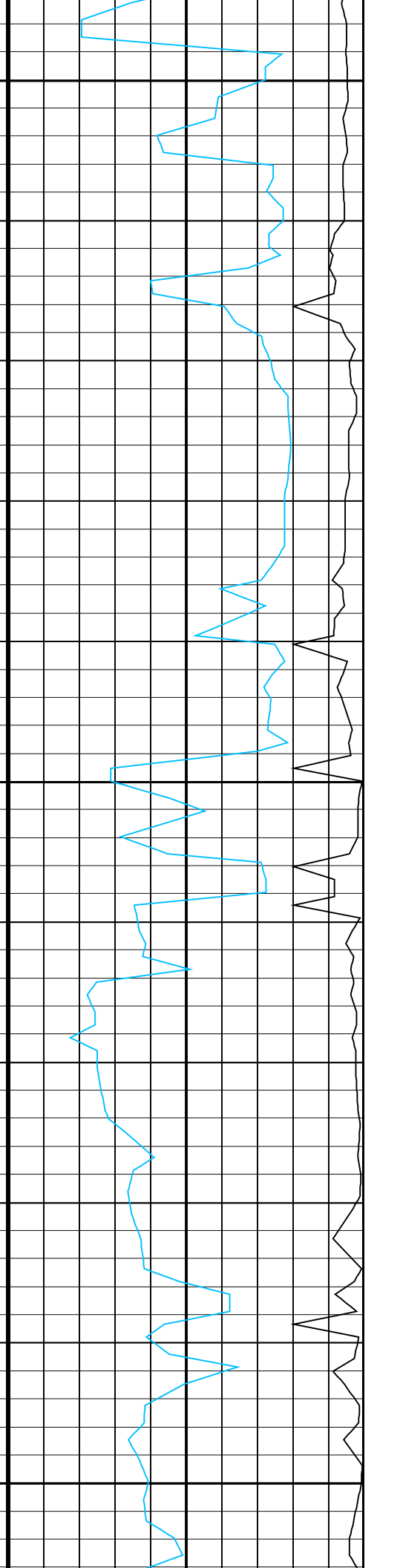
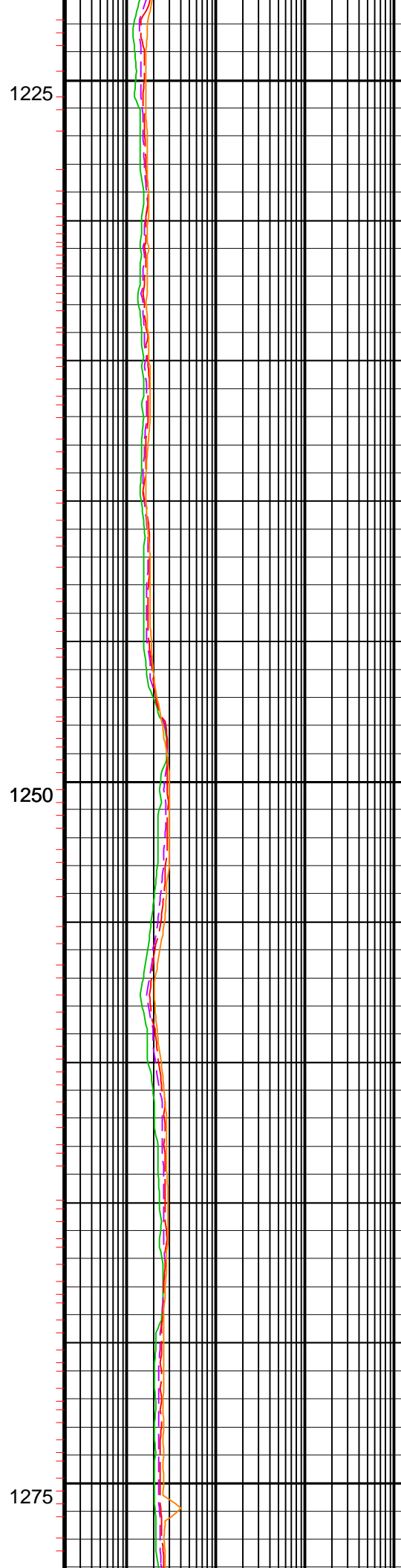
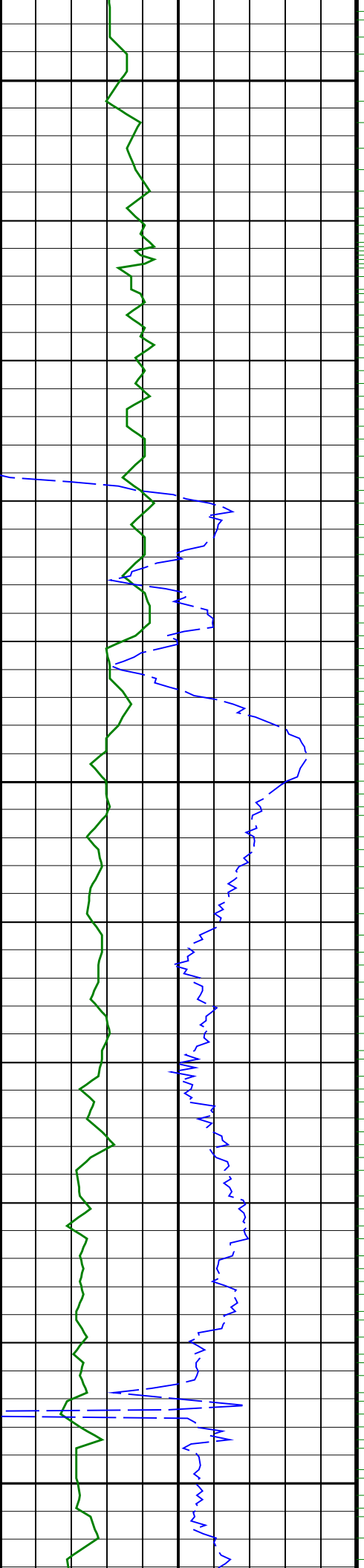
1125

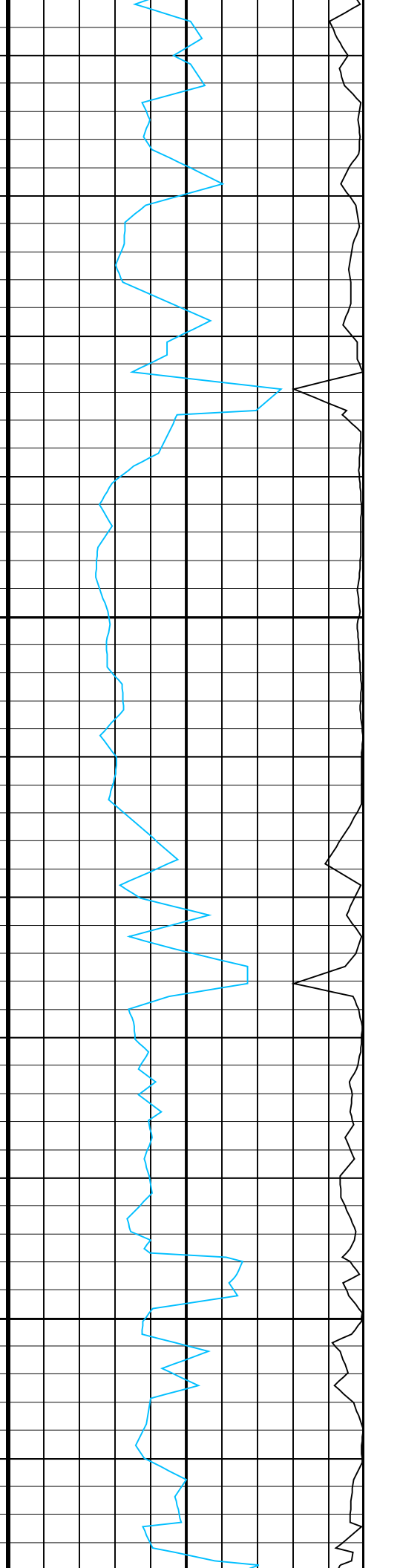
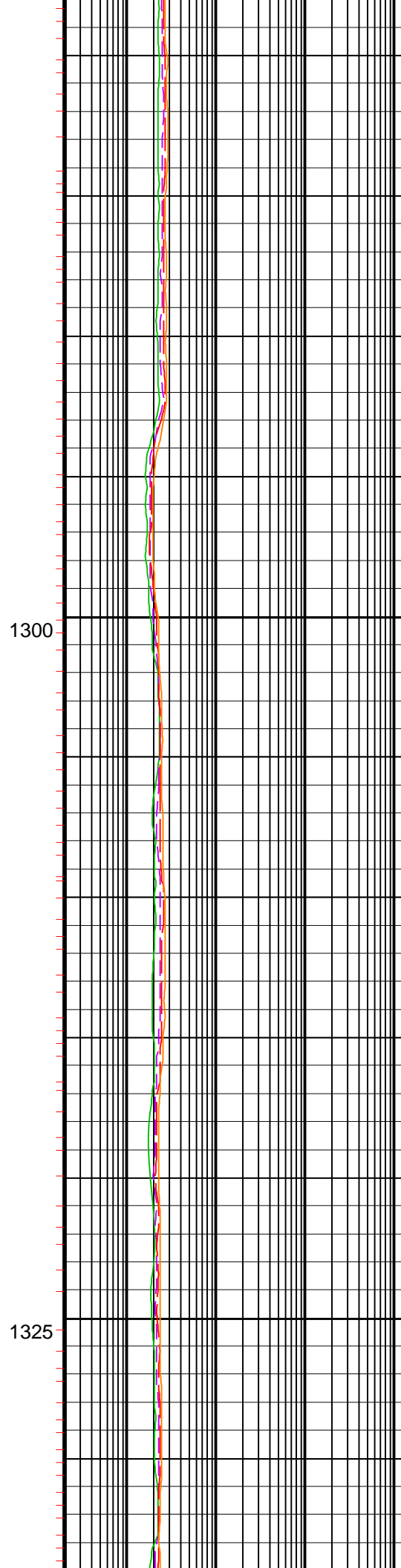
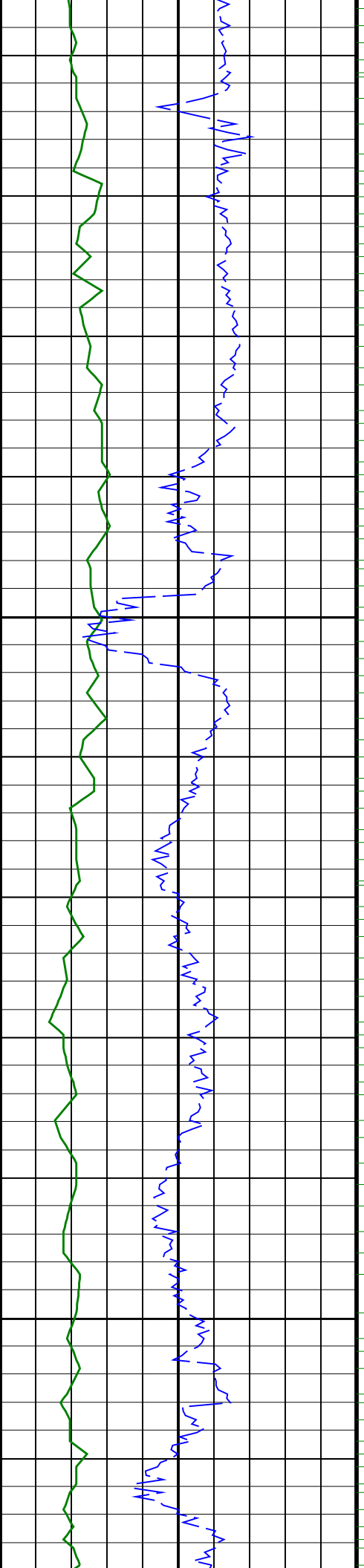
1150

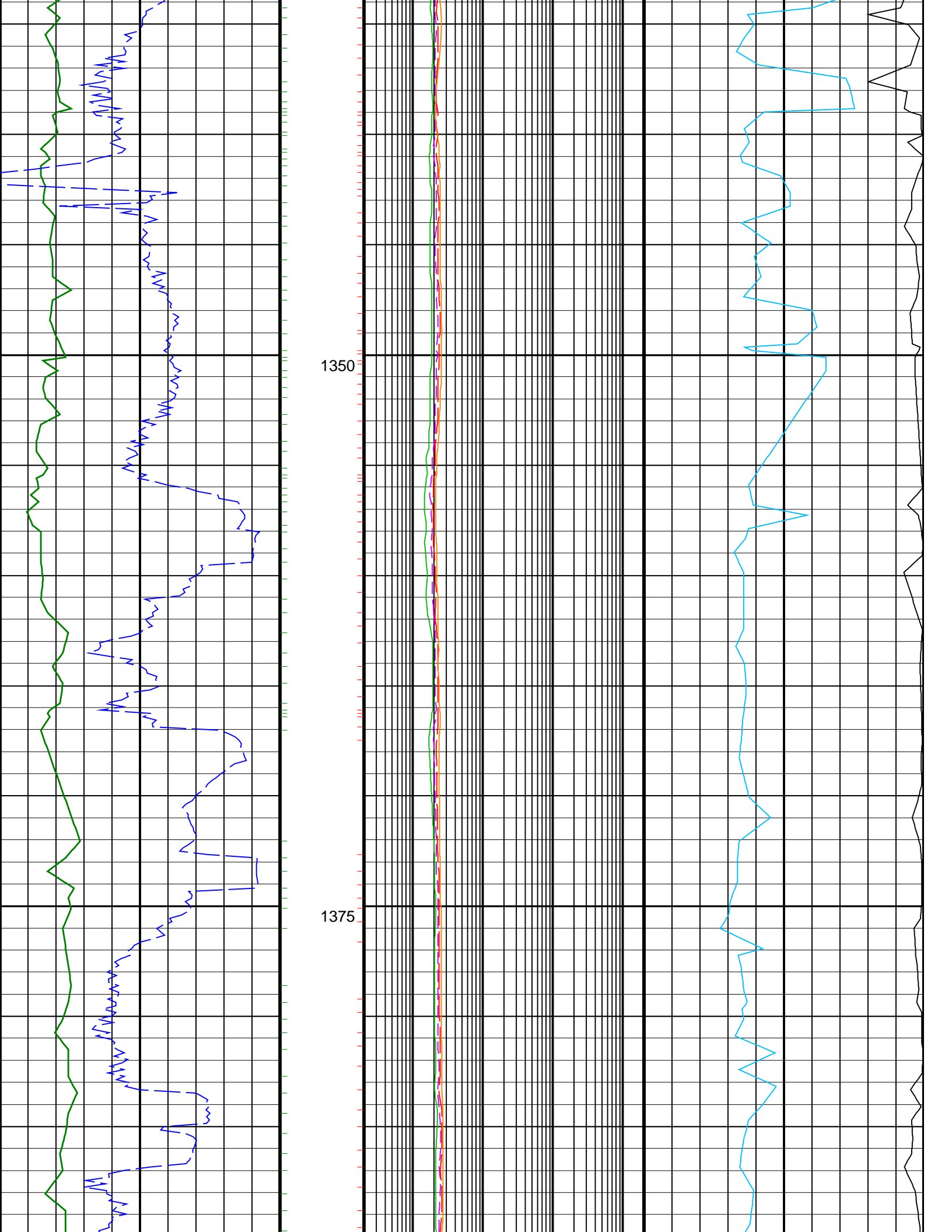


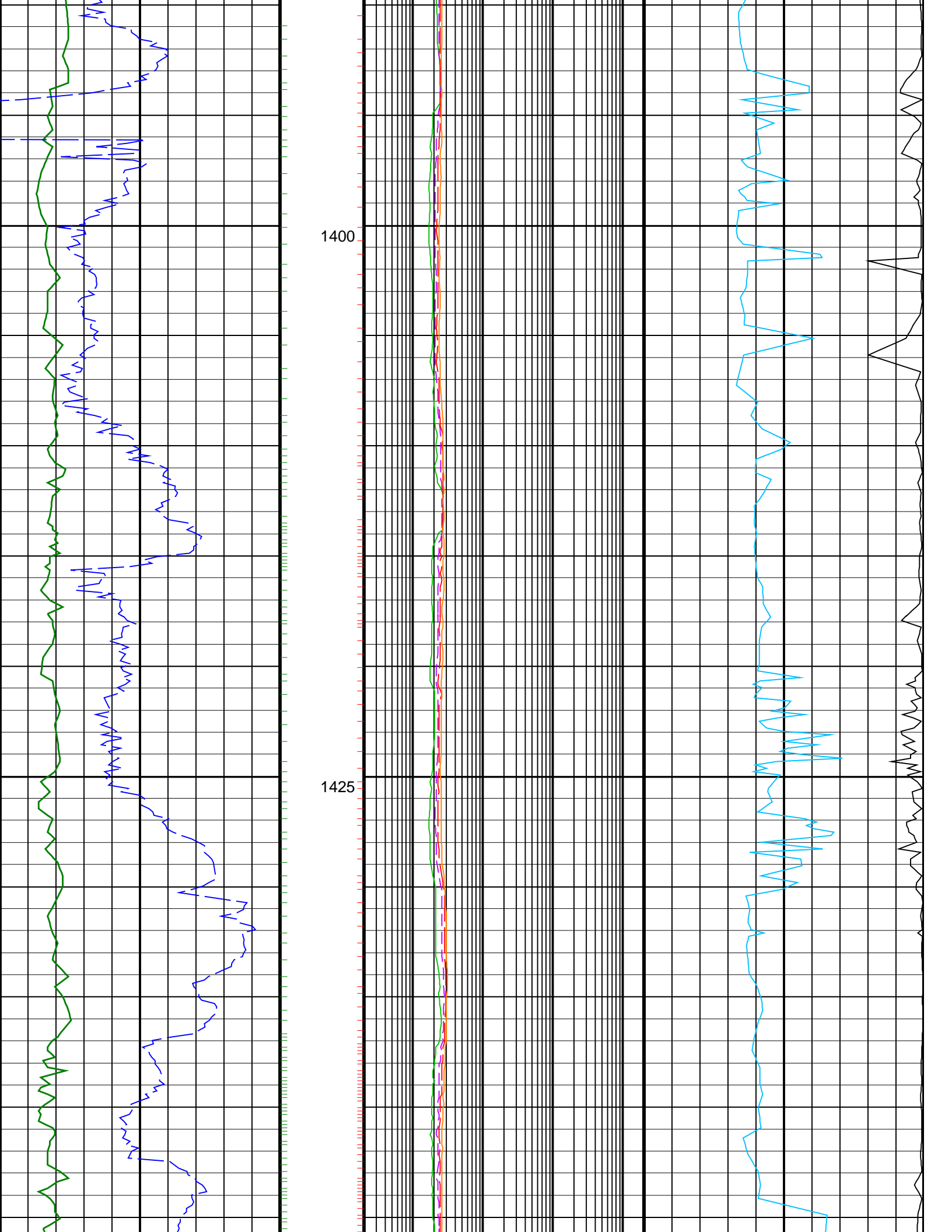
Gap in Data due to Geolograph Cable failure from 1136mMD to 1222mMD

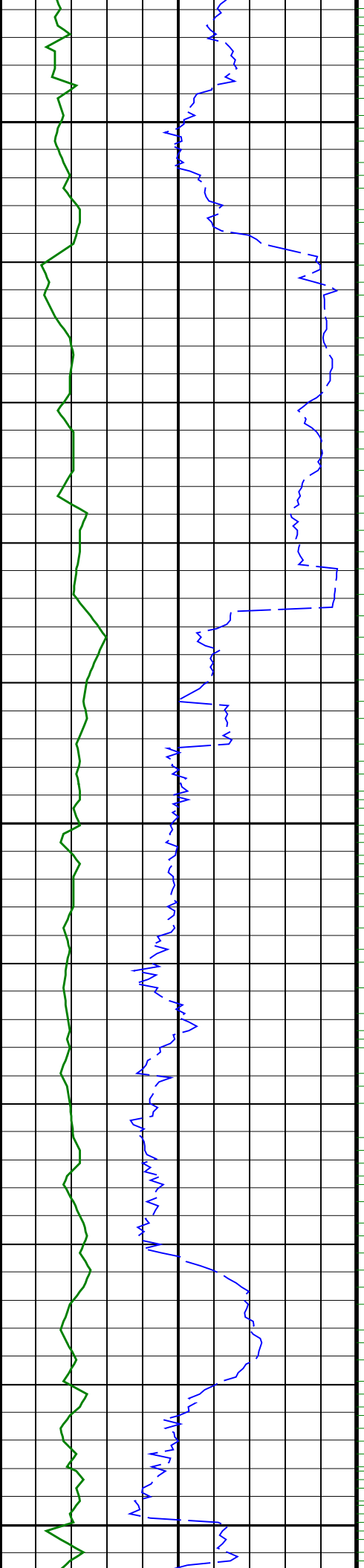








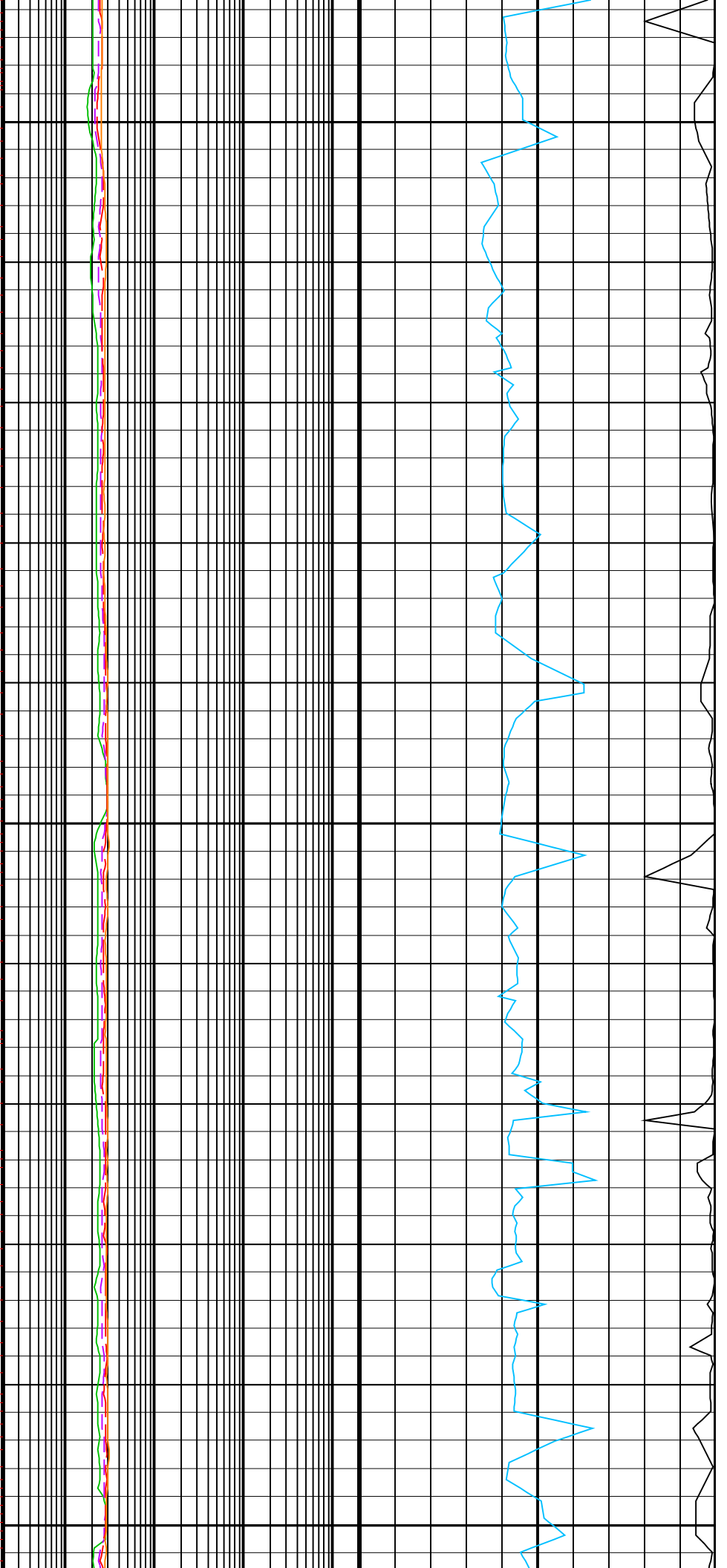


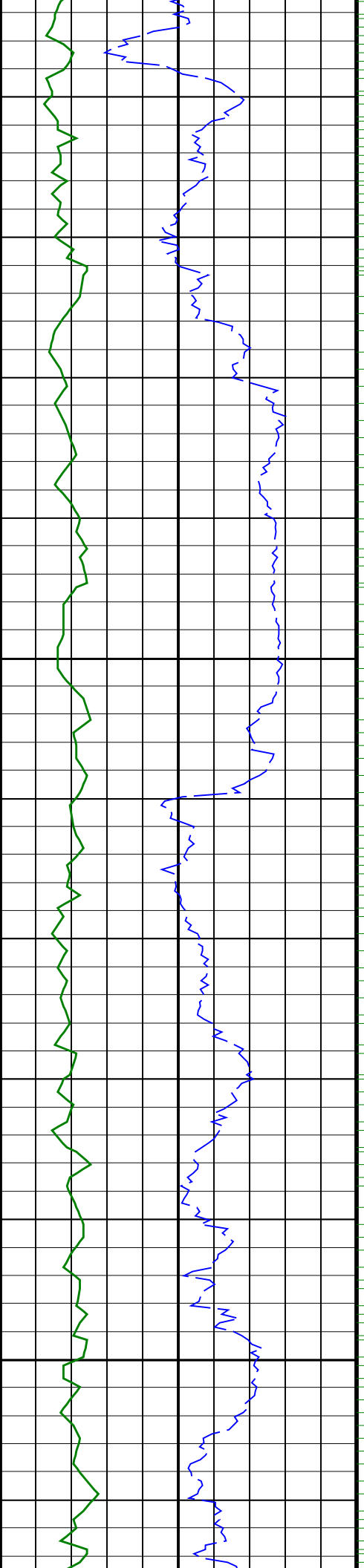


1450

1475

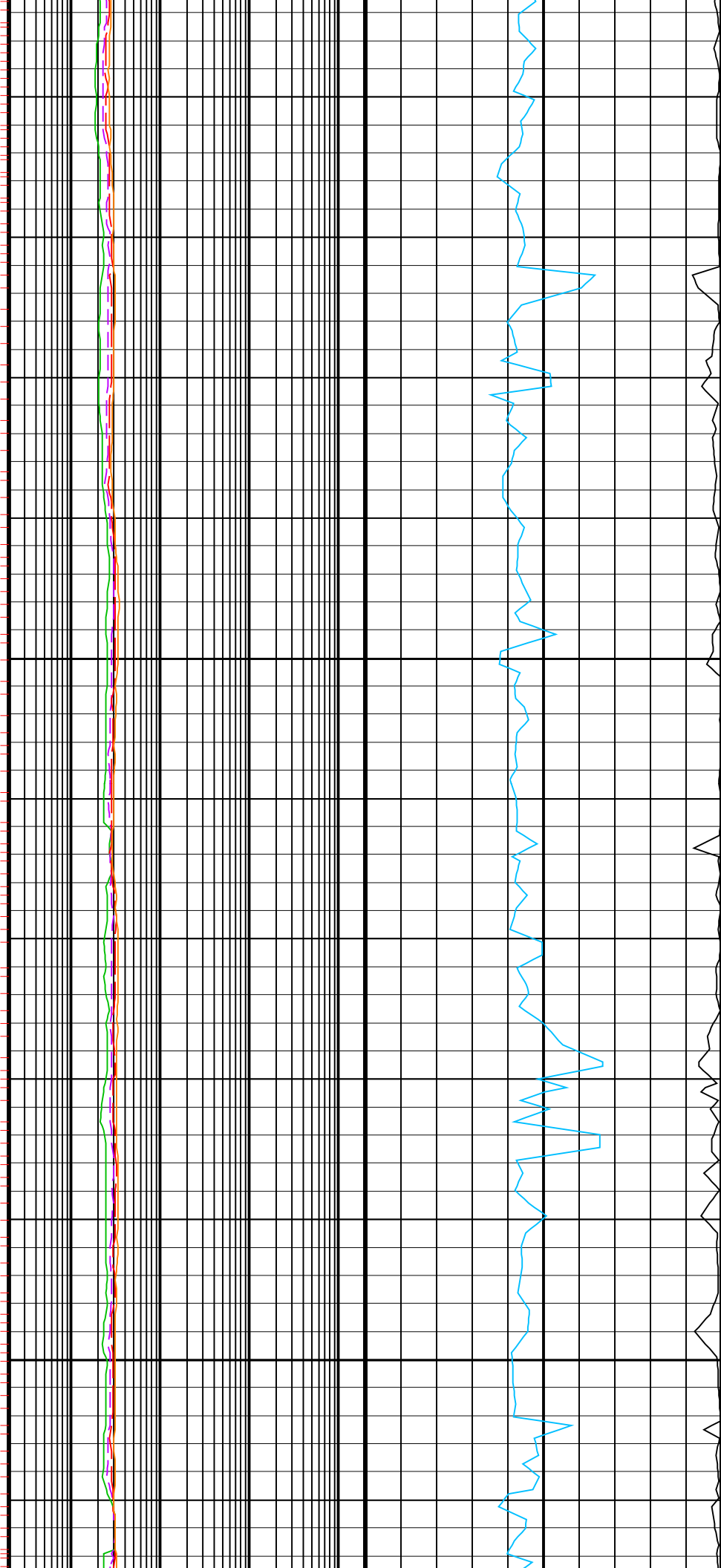
1500

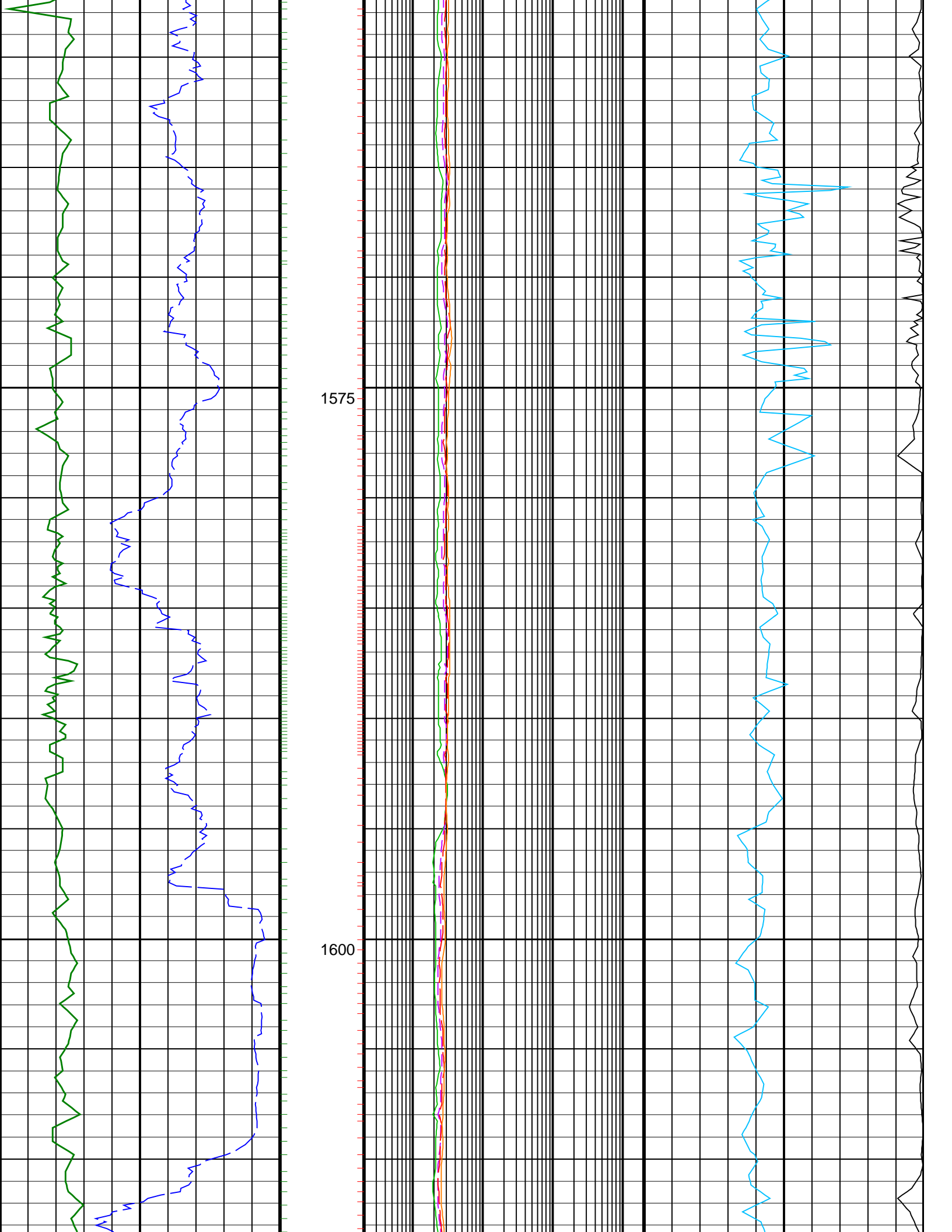


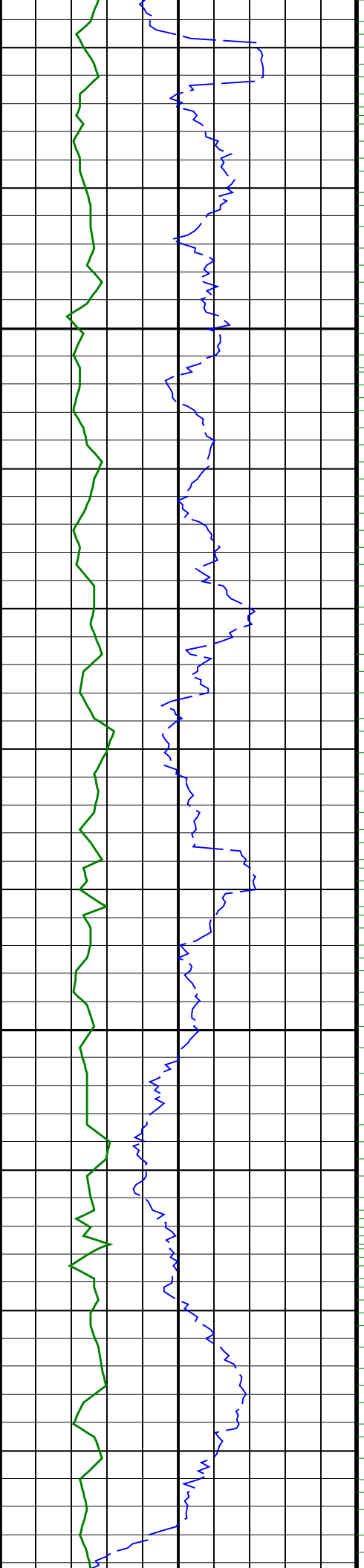


1525

1550

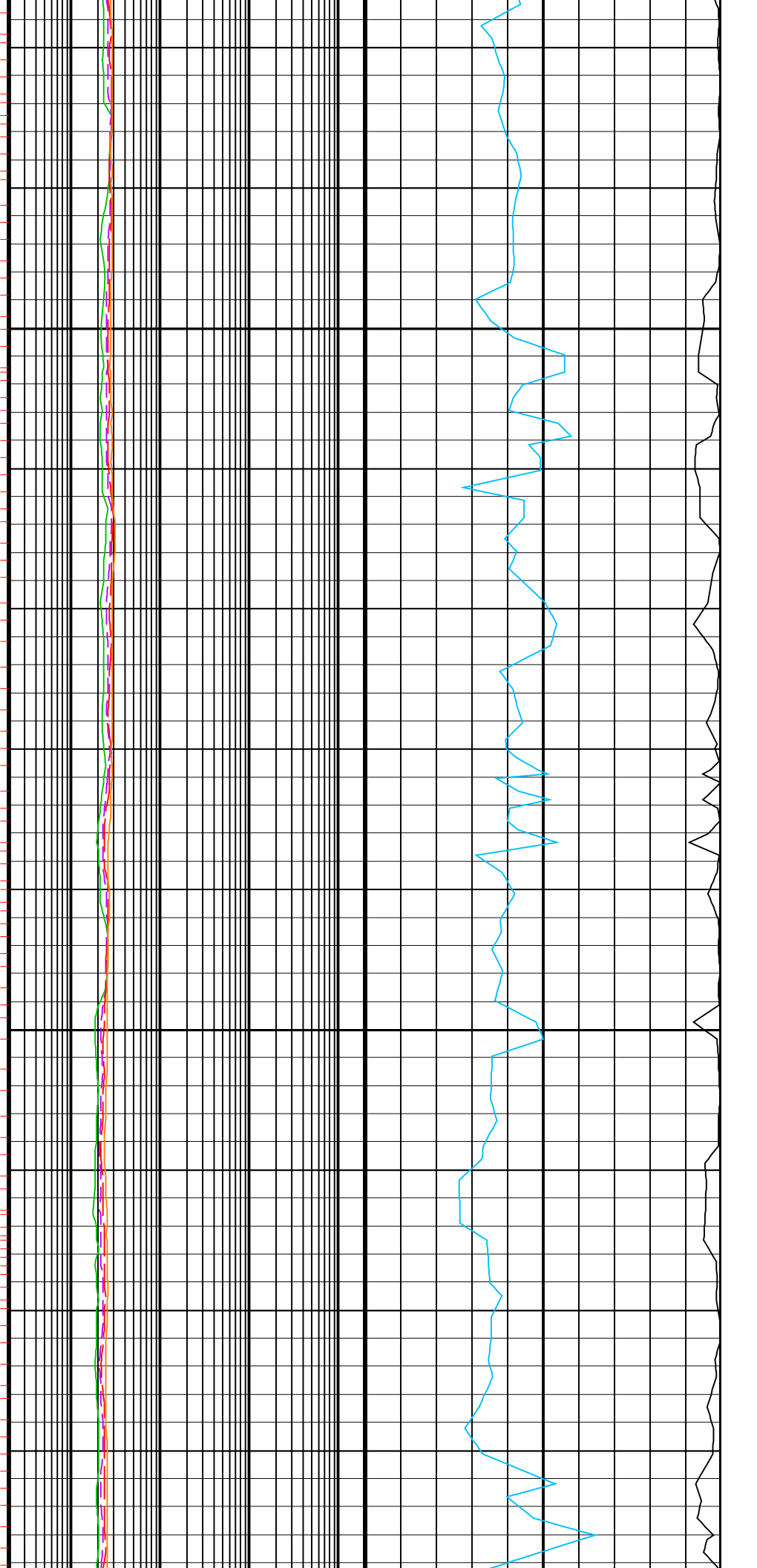


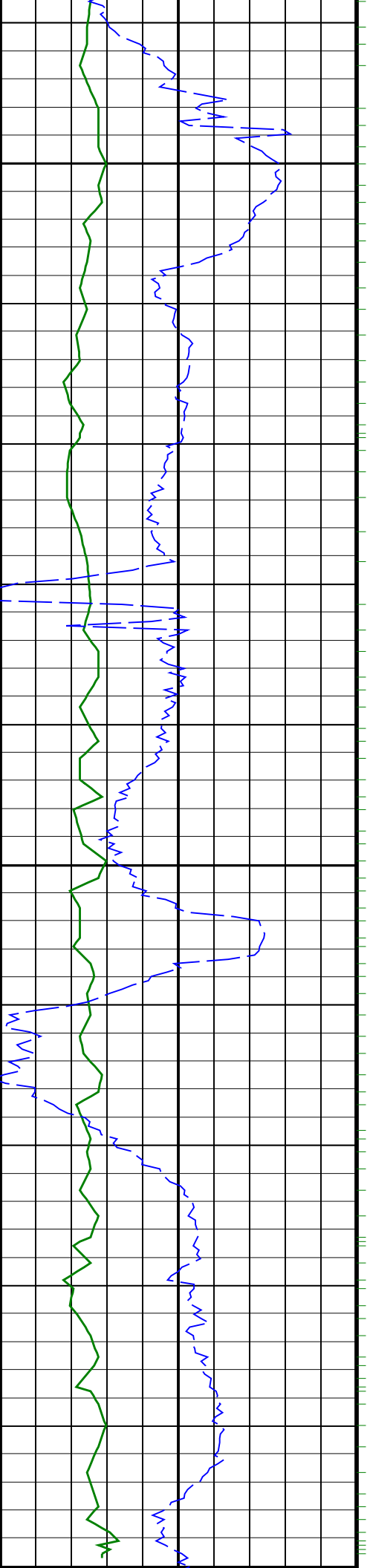




1625

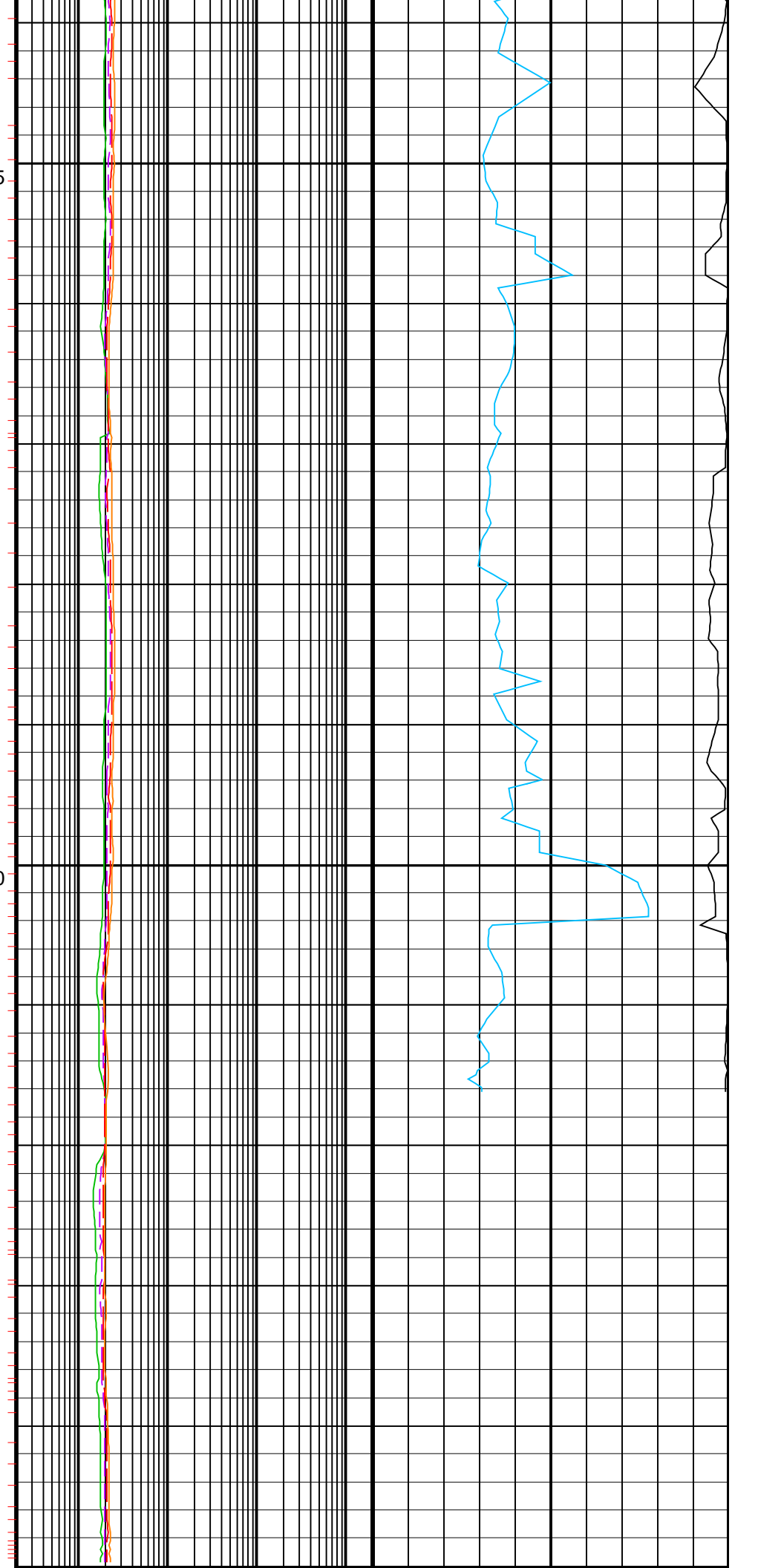
1650



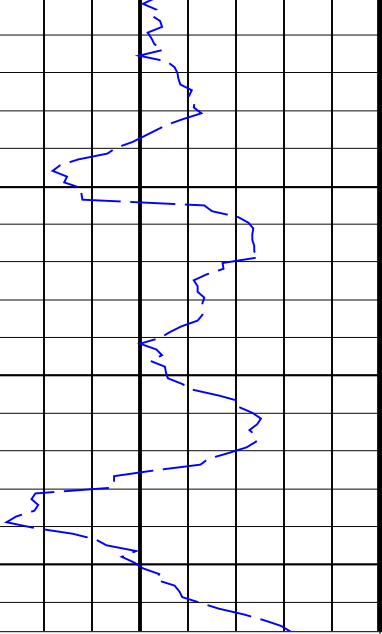


1675

1700



1725



Section TD@ 1741.0m

<p><u>ROP*5 (ROP5)</u> 200 (M/HR) 0</p>	<p><u>ARC BHCorr Phase-Shift Resistivity 16-in. at 2 MHz, Real-Time (P16H_RT)</u> 0.2 (OHMM) 2000</p>	<p><u>Coherence at Compressional Peak, Real-Time (CHCO_RT)</u> -4 (----) 1</p>
<p><u>ARC Gamma Ray, Real-Time (ARC_GR_RT)</u> 0 (GAPI) 200</p>	<p><u>ARC BHCorr Phase-Shift Resistivity 28-in. at 2 MHz, Real-Time (P28H_RT)</u> 0.2 (OHMM) 2000</p>	<p><u>Delta-T Compressional, Real-Time (DTCO_RT)</u> 140 (US/F) 40</p>
	<p><u>ARC BHCorr Phase-Shift Resistivity 40-in. at 2 MHz, Real-Time (P40H_RT)</u> 0.2 (OHMM) 2000</p>	
	<p><u>ARC BHCorr Attenuation Resistivity 40-in. at 2 MHz, Real-Time (A40H_RT)</u> 0.2 (OHMM) 2000</p>	

PIP SUMMARY

- ┆ ARC GRAPP PIP
- ┆ IMP RP16 PIP