

Elver-1_VISION Resistivity RT 200MD

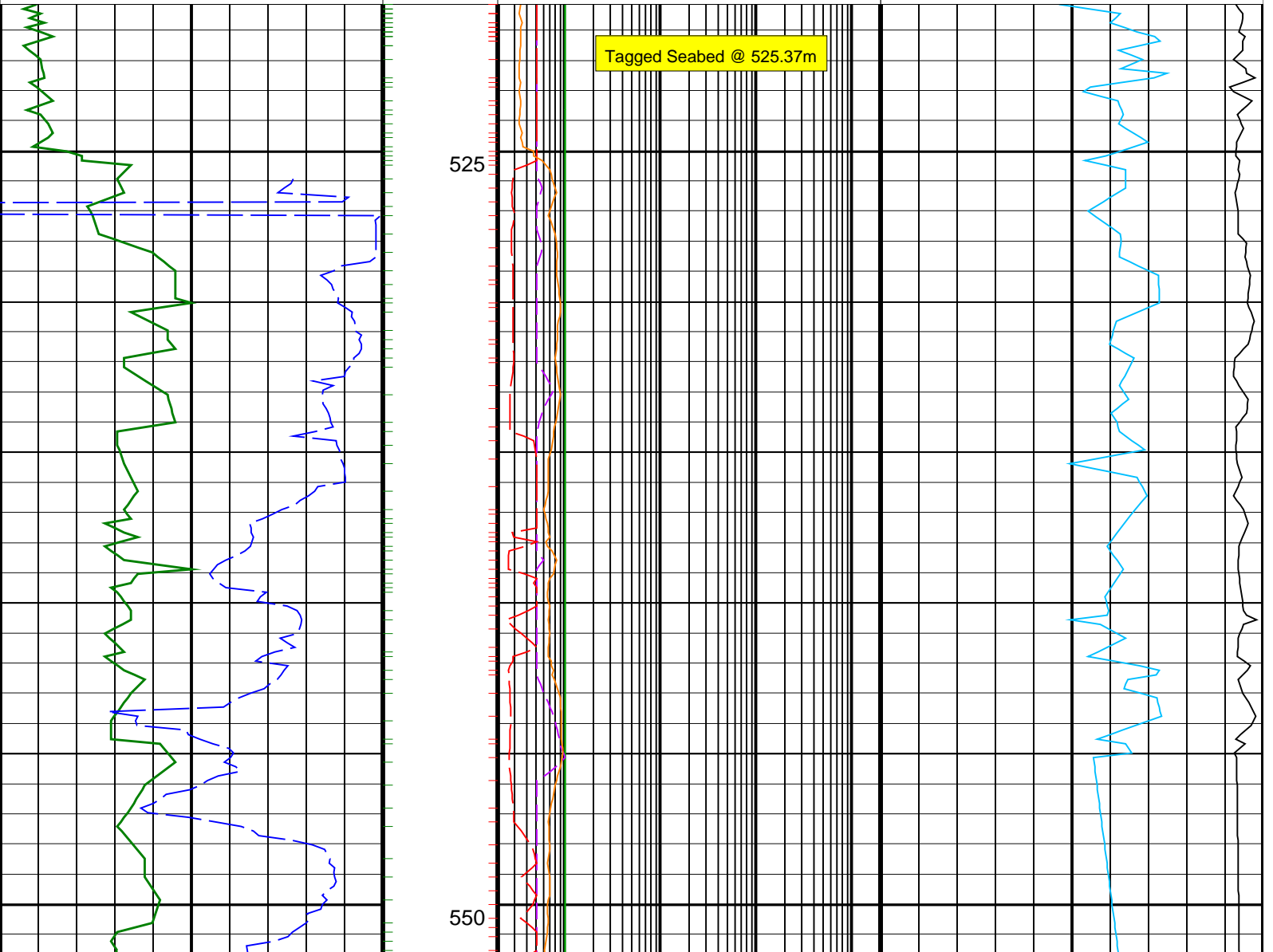
IDEAL Version: ID13_0C_08 <MD > Vertical Scale: 1:200

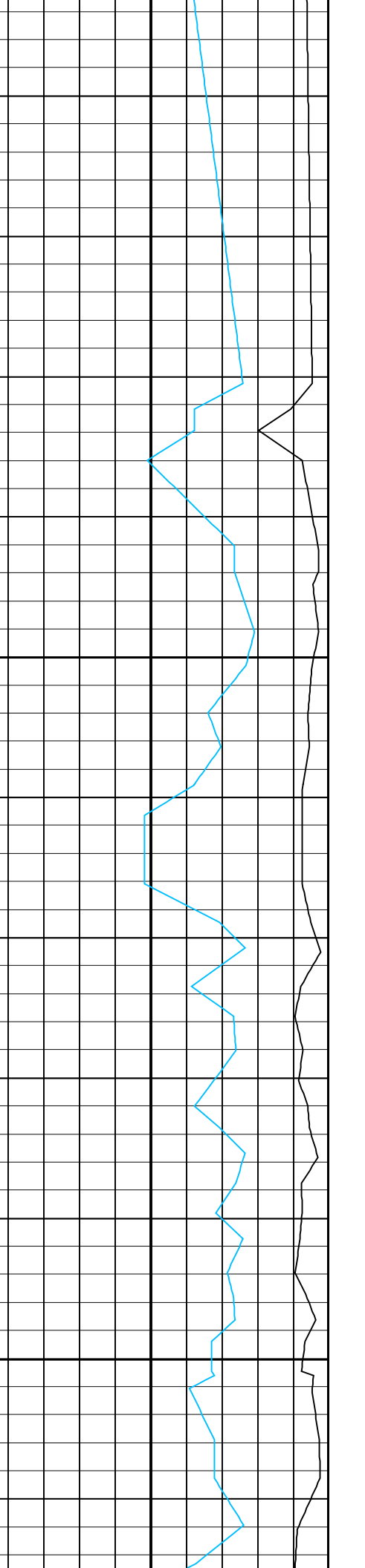
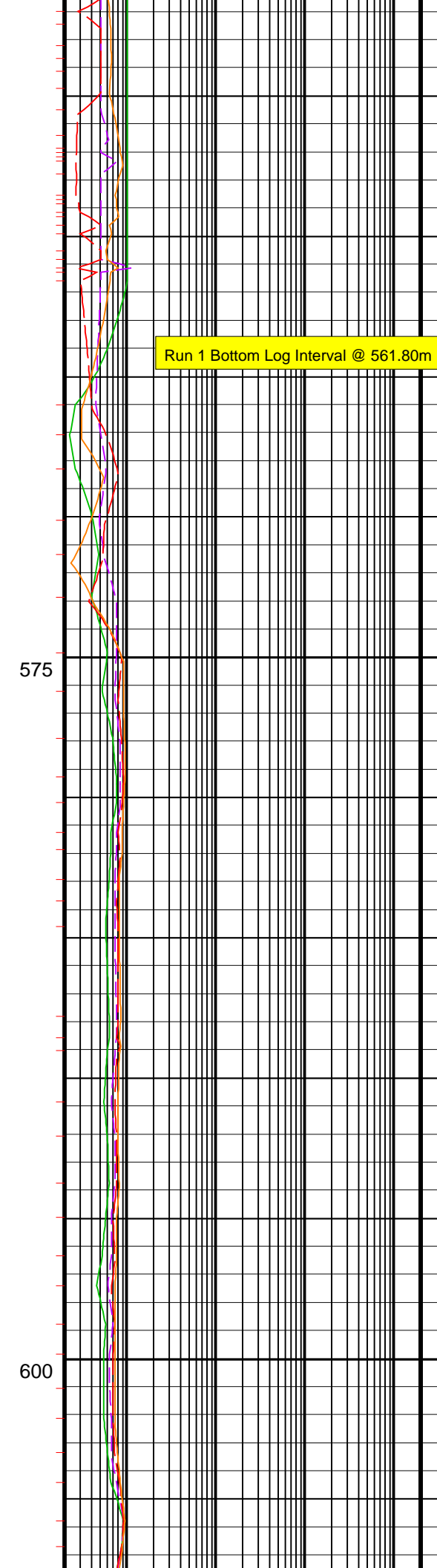
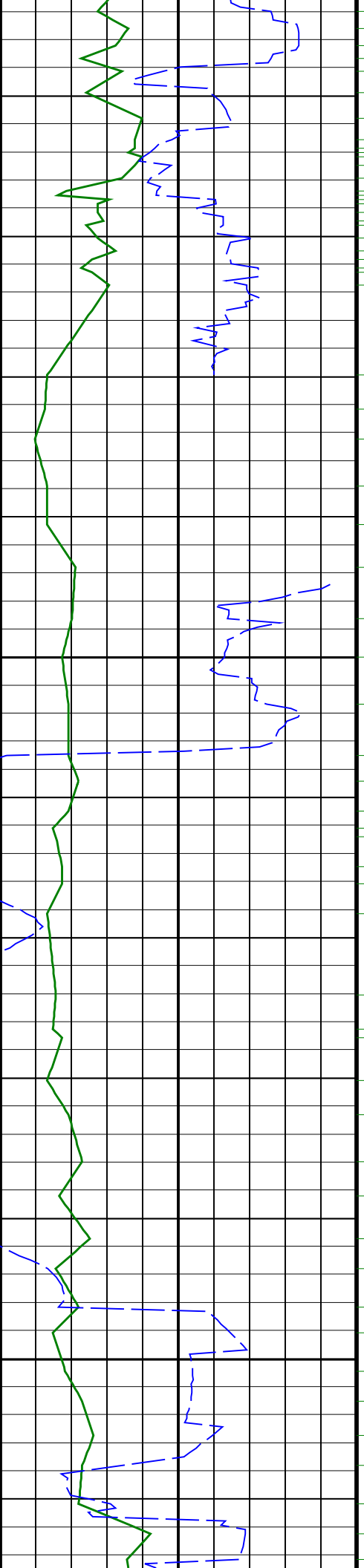
Graphics File Created: 22-Dec-2008 05:31

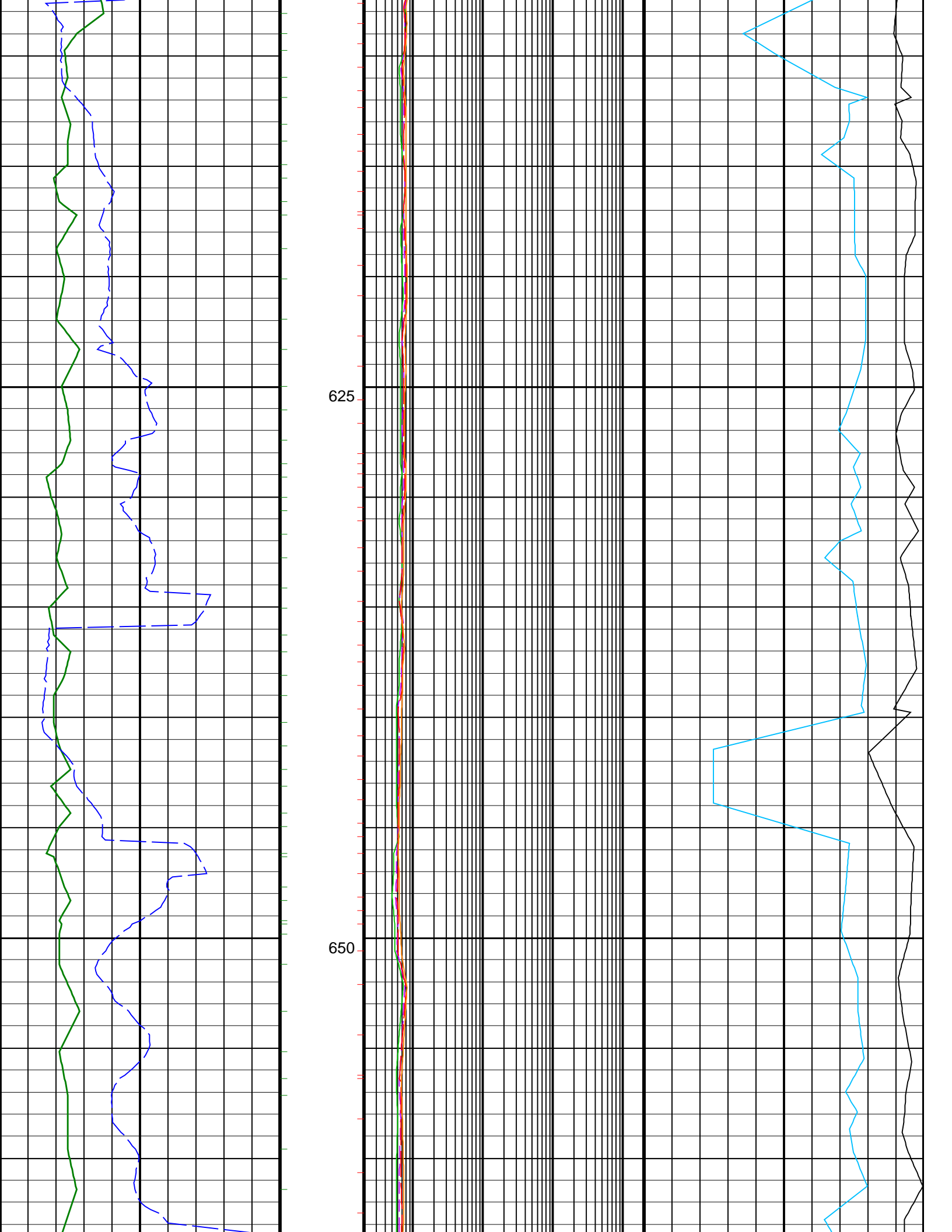
PIP SUMMARY

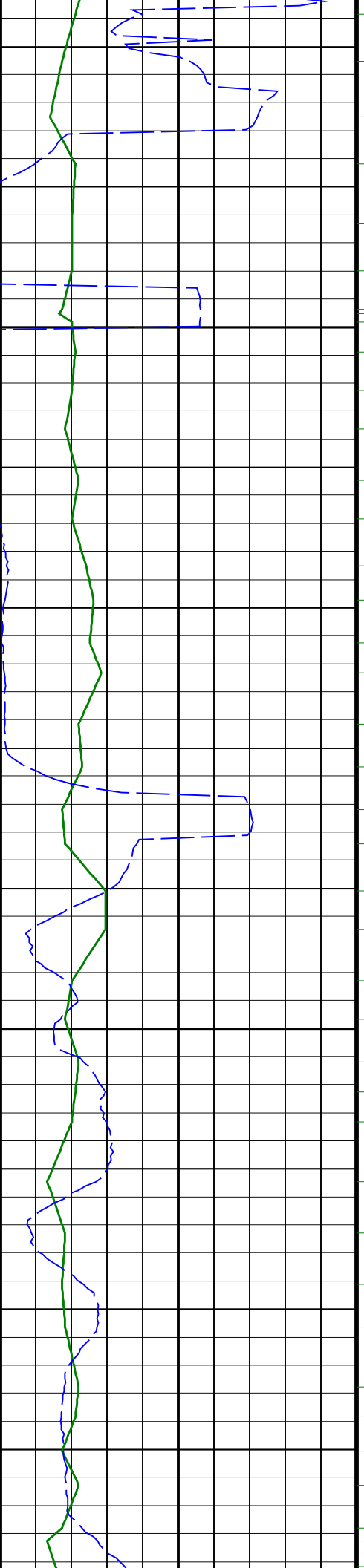
- └ ARC GRAPP PIP
- └ IMP RP16 PIP

	<p>ARC BHCorr Attenuation Resistivity 40-in. at 2 MHz, Real-Time (A40H_RT)</p> <p>0.2 (OHMM) 2000</p>	
	<p>ARC BHCorr Phase-Shift Resistivity 40-in. at 2 MHz, Real-Time (P40H_RT)</p> <p>0.2 (OHMM) 2000</p>	
<p>ARC Gamma Ray, Real-Time (ARC_GR_RT) (GAPI)</p> <p>0 200</p>	<p>ARC BHCorr Phase-Shift Resistivity 28-in. at 2 MHz, Real-Time (P28H_RT)</p> <p>0.2 (OHMM) 2000</p>	<p>Delta-T Compressional, Real-Time (DTCO_RT) (US/F)</p> <p>140 40</p>
<p>ROP*5 (ROP5) (M/HR)</p> <p>200 0</p>	<p>ARC BHCorr Phase-Shift Resistivity 16-in. at 2 MHz, Real-Time (P16H_RT)</p> <p>0.2 (OHMM) 2000</p>	<p>Coherence at Compressional Peak, Real-Time (CHCO_RT) (----)</p> <p>-4 1</p>



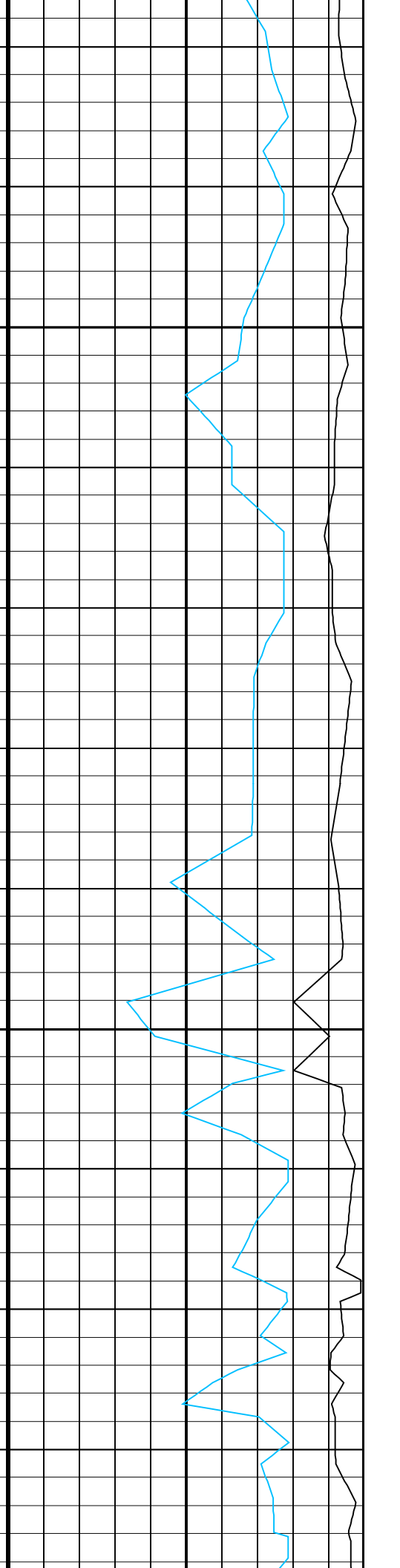
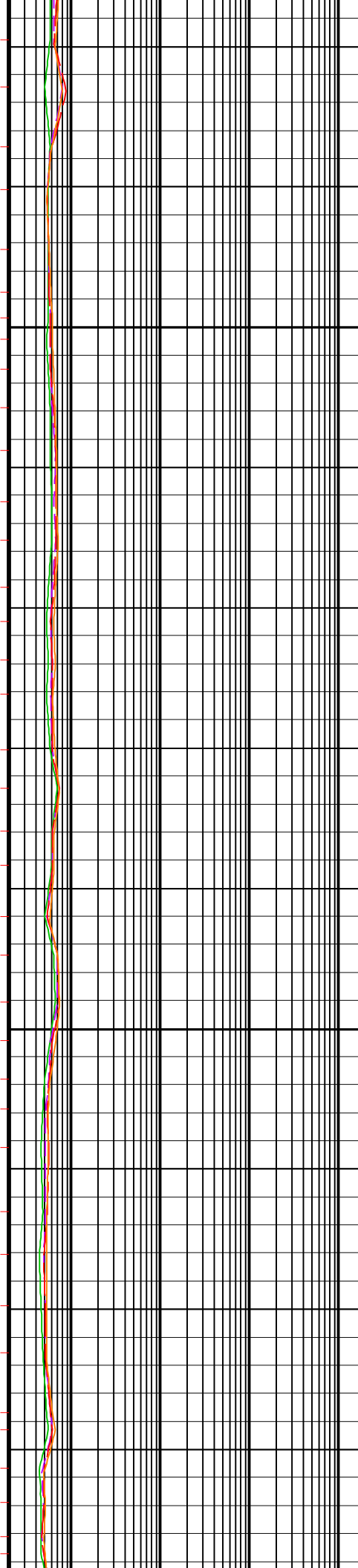


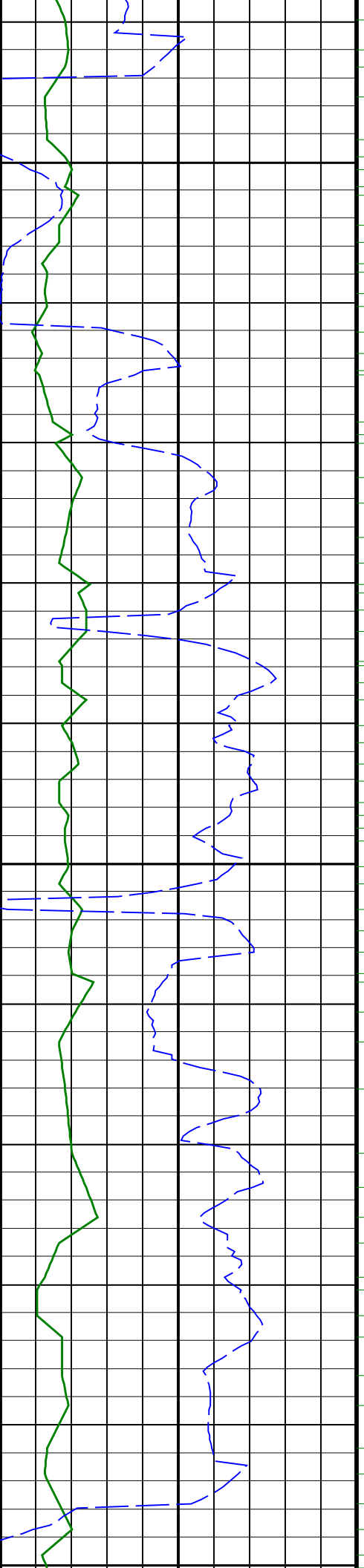




675

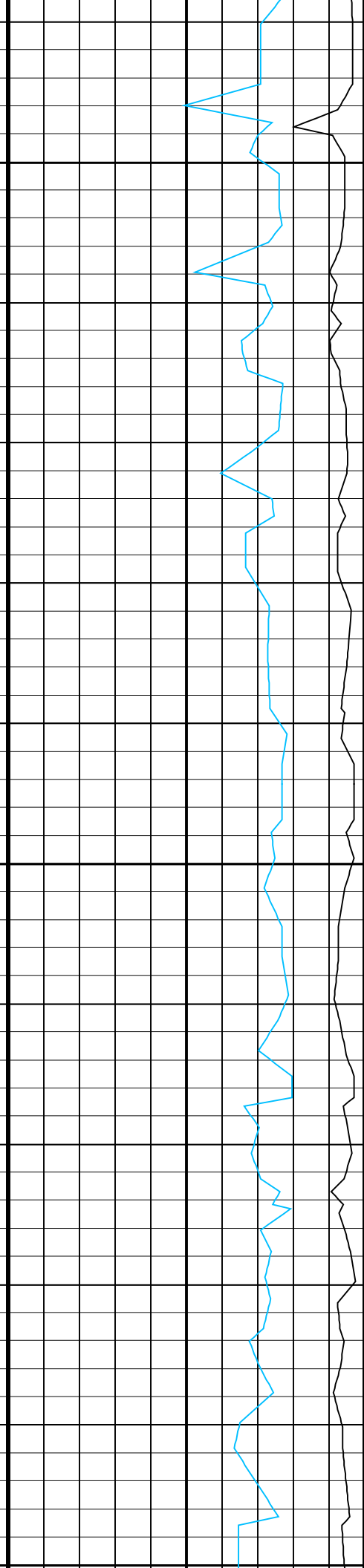
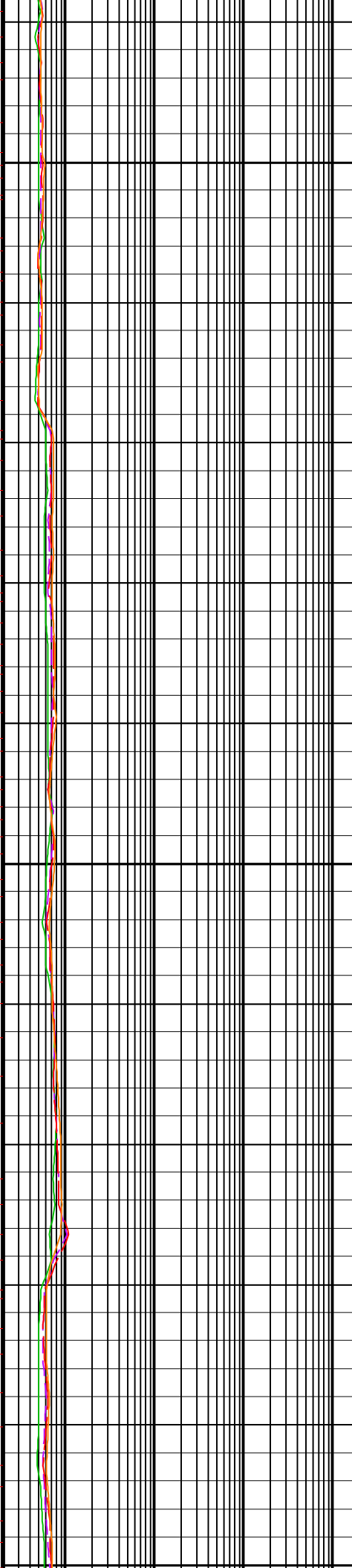
700

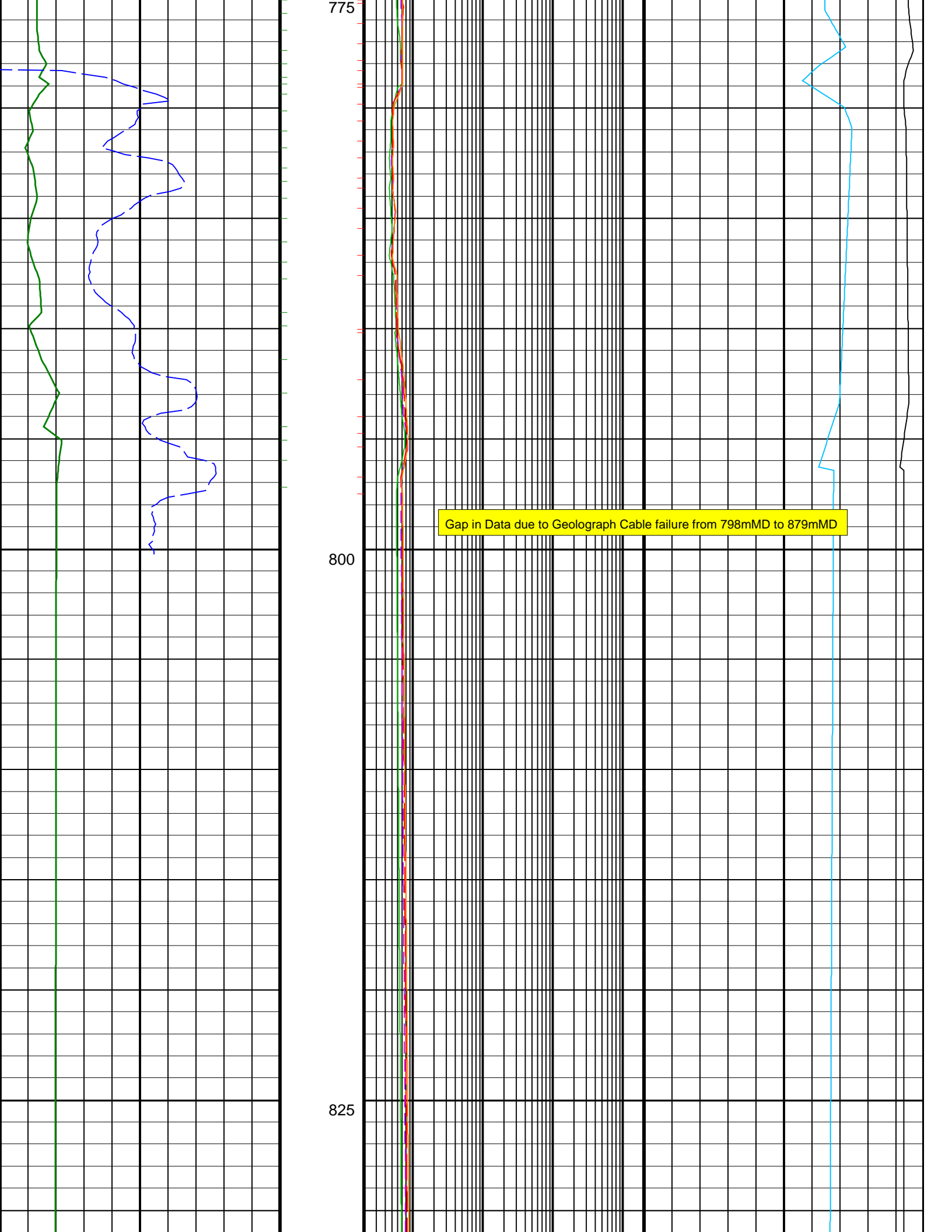




725

750



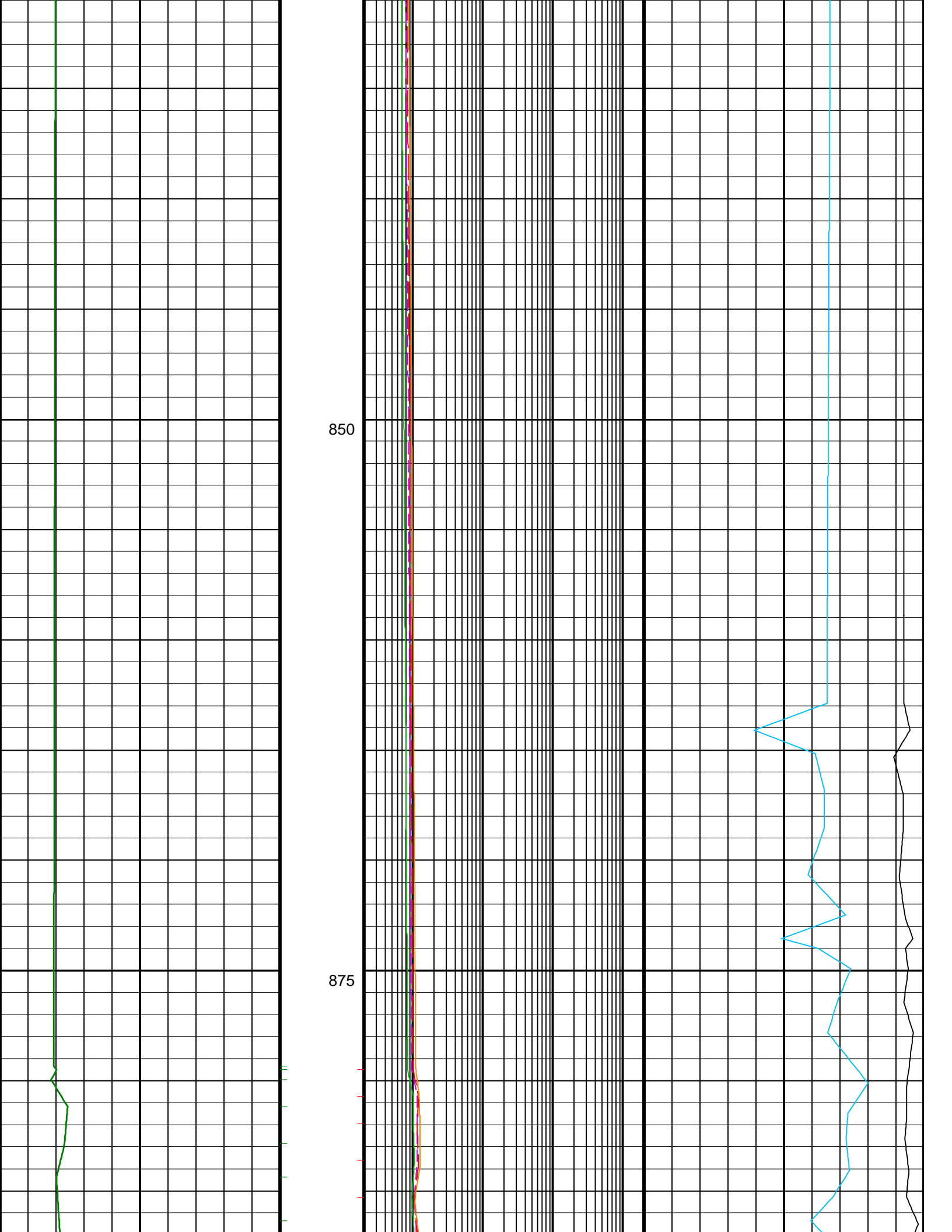


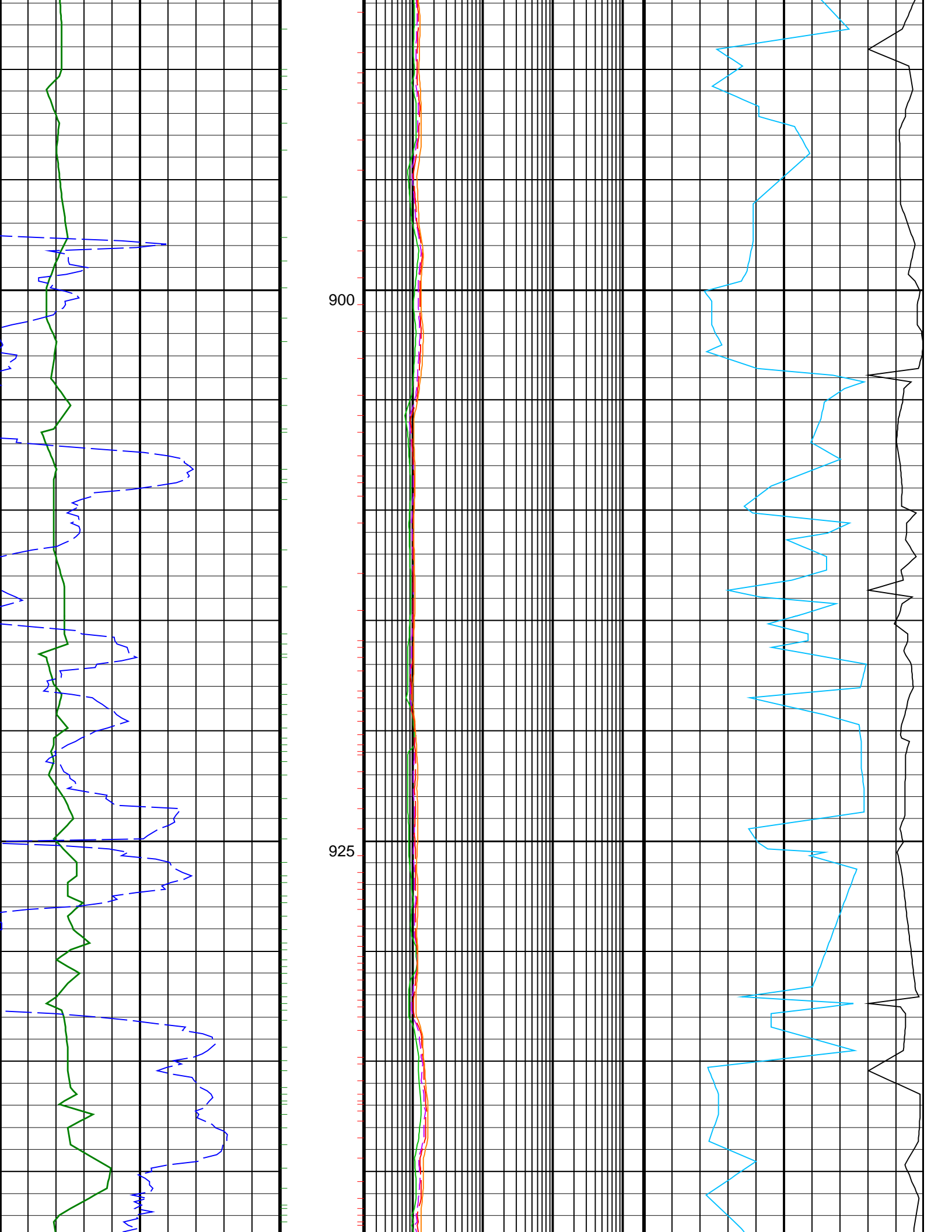
775

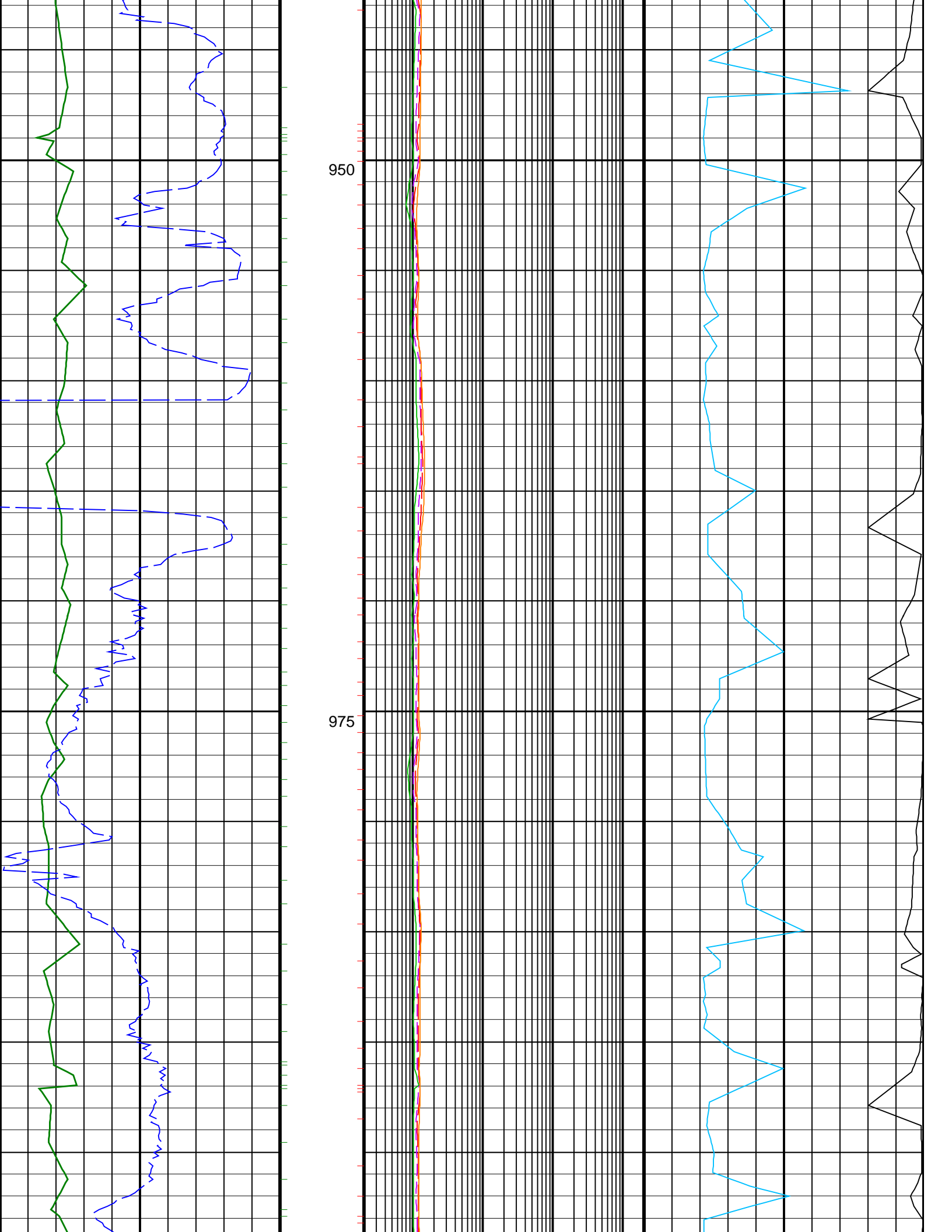
800

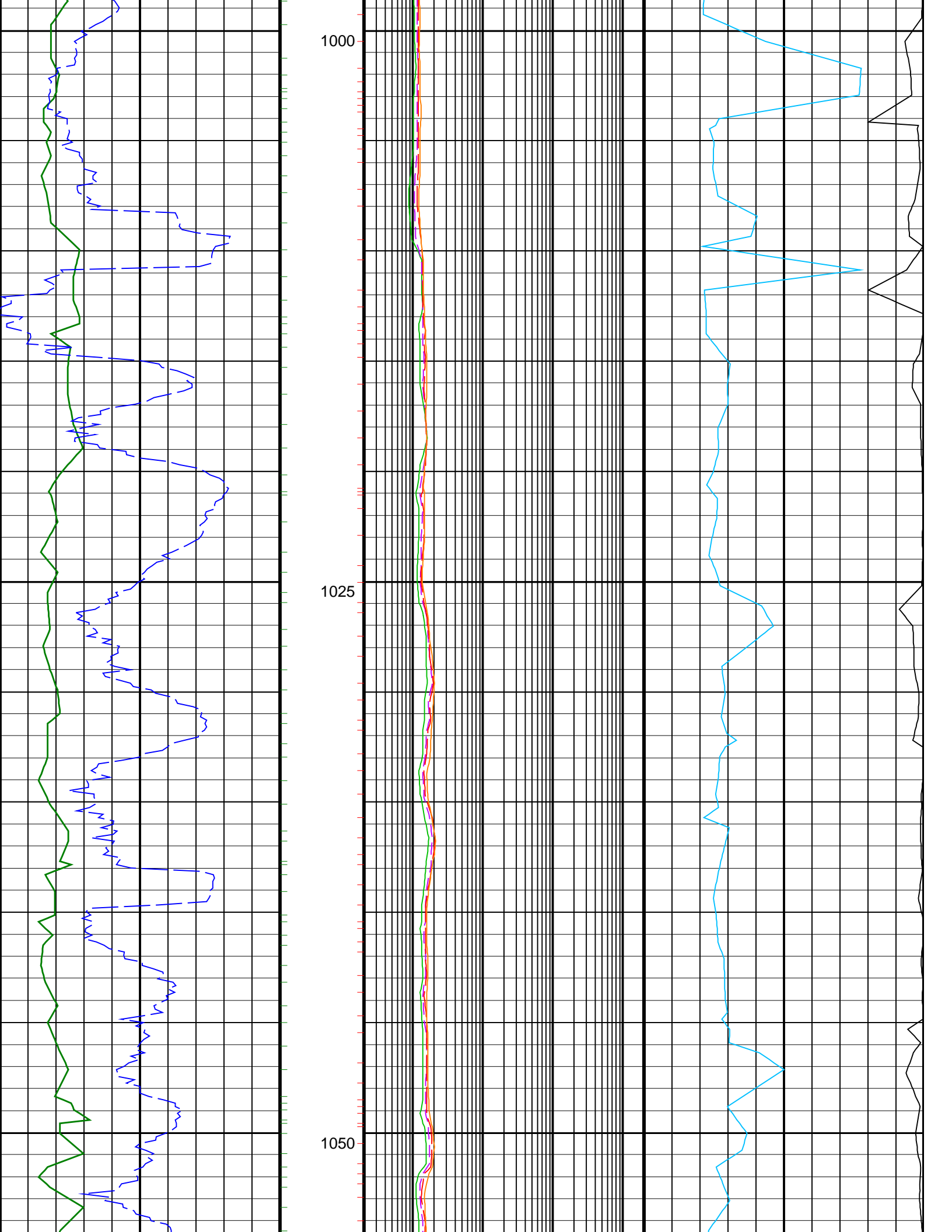
825

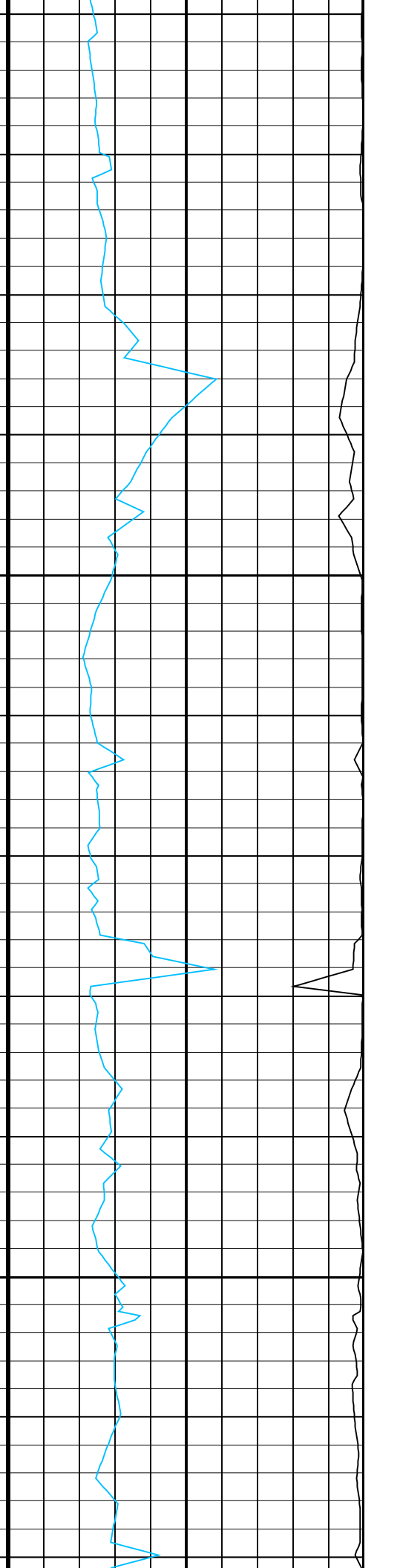
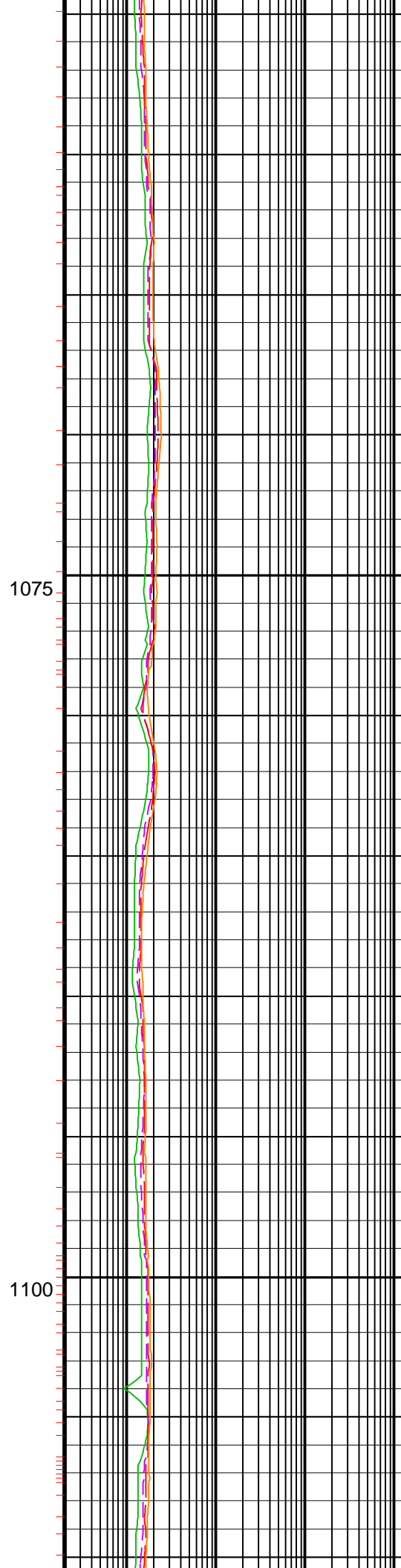
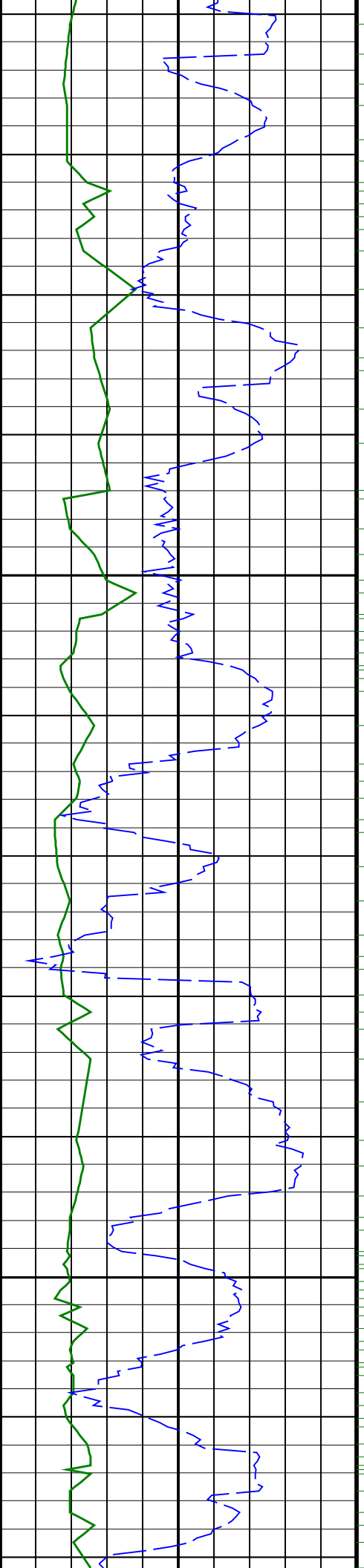
Gap in Data due to Geograph Cable failure from 798mMD to 879mMD

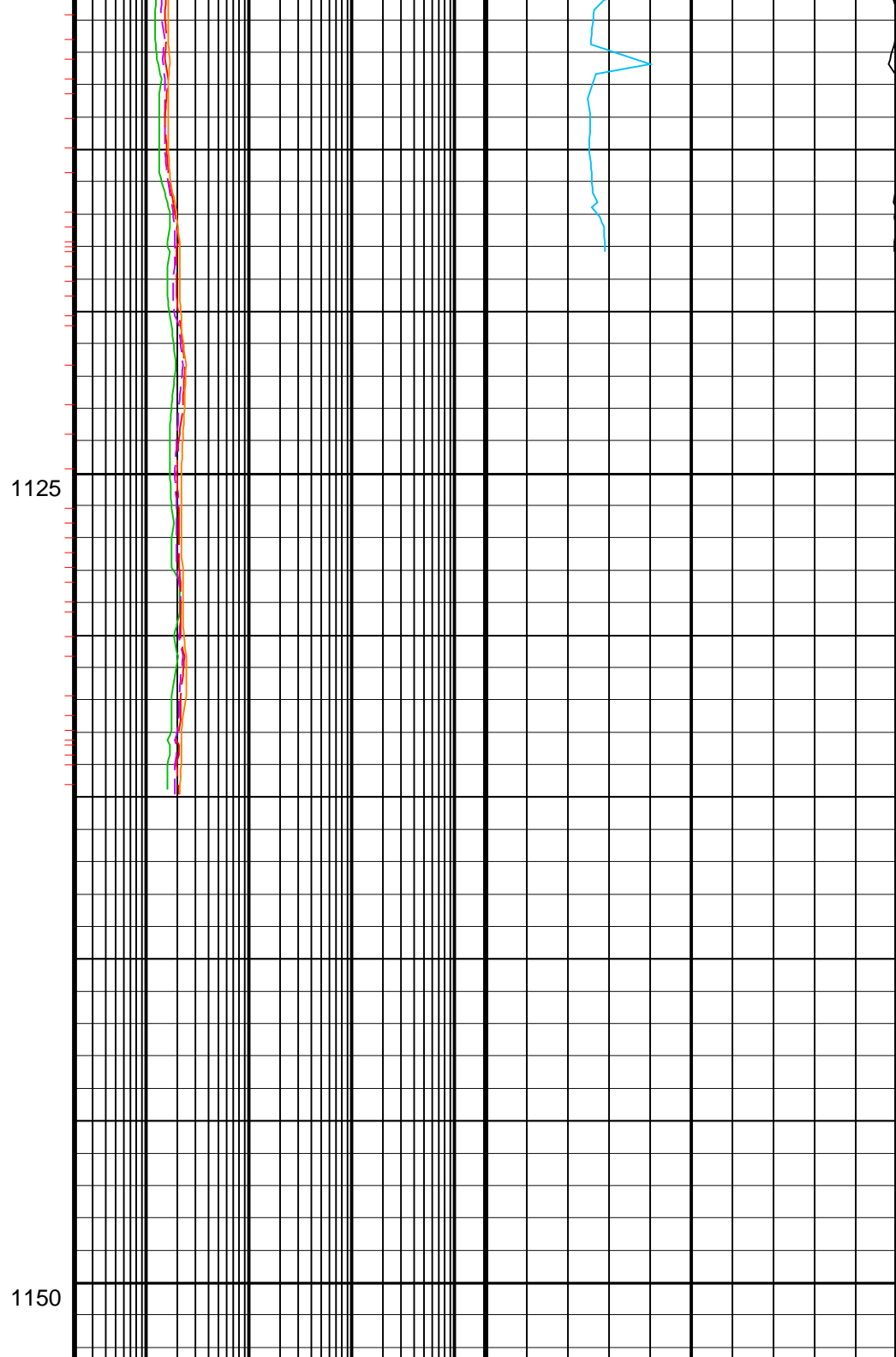
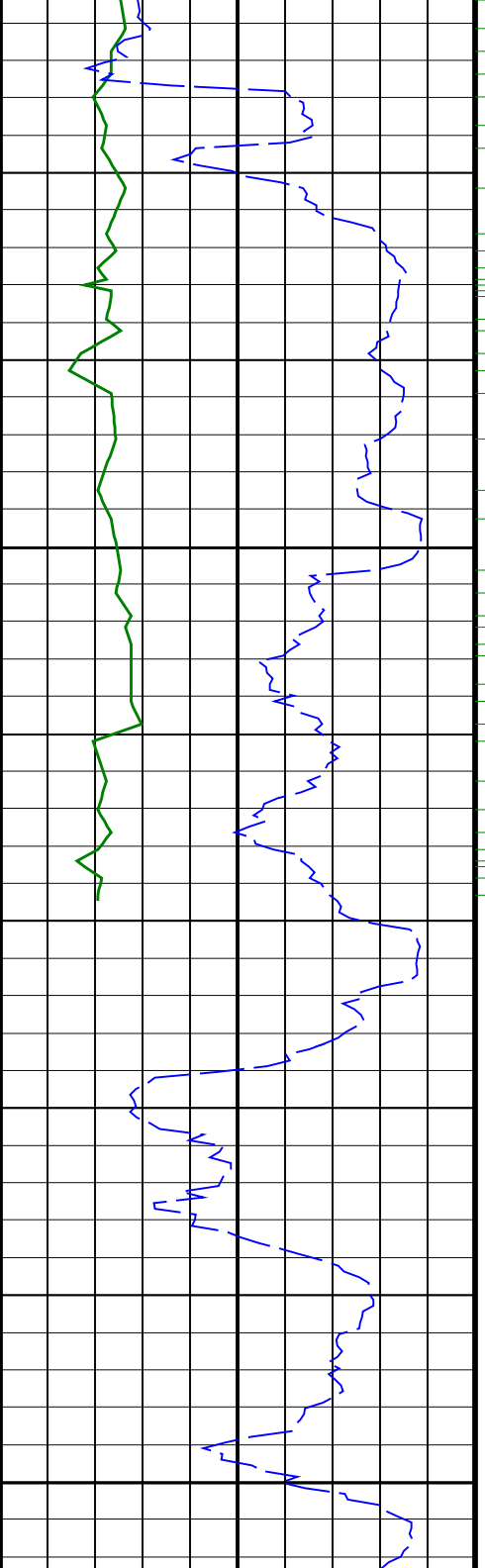












ROP*5 (ROP5)		
200	(M/HR)	0
ARC Gamma Ray, Real-Time (ARC_GR_RT)		
0	(GAPI)	200

ARC BHCorr Phase-Shift Resistivity		
16-in. at 2 MHz, Real-Time (P16H_RT)		
0.2	(OHMM)	2000

Coherence at Compressional Peak, Real-Time (CHCO_RT)		
-4	(----	1

ARC BHCorr Phase-Shift Resistivity		
28-in. at 2 MHz, Real-Time (P28H_RT)		
0.2	(OHMM)	2000

Delta-T Compressional, Real-Time (DTCO_RT)		
140	(US/F)	40

ARC BHCorr Phase-Shift Resistivity		
40-in. at 2 MHz, Real-Time (P40H_RT)		
0.2	(OHMM)	2000

ARC BHCorr Attenuation Resistivity		
40-in. at 2 MHz, Real-Time (A40H_RT)		
0.2	(OHMM)	2000

PIP SUMMARY

