

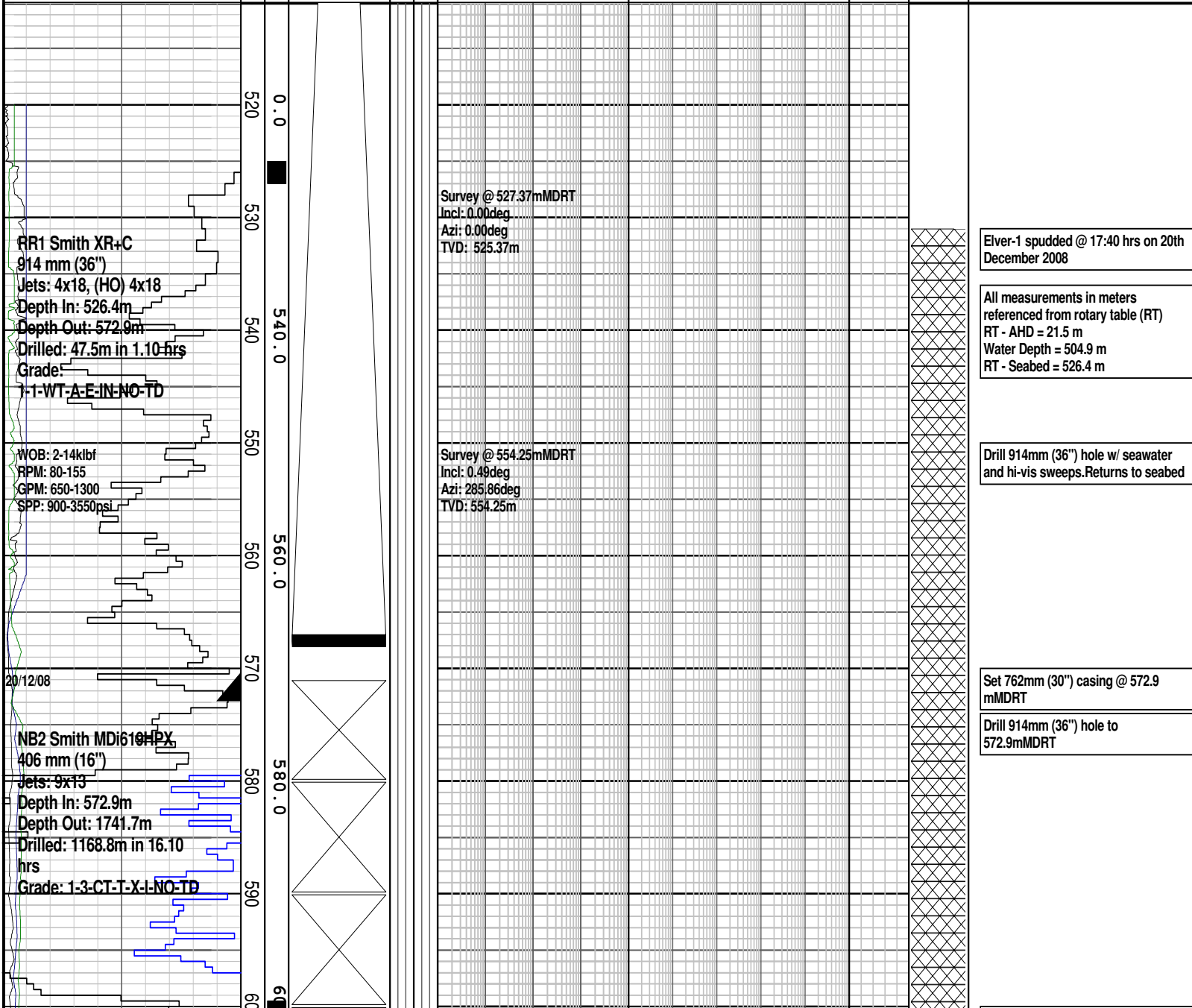


Company : Apache
 Well : Elver-1
 Interval : 511.00 - 1787.05 meters
 Created : 27/Dec/2008 9:35:04 AM

INTEQ

FORMATION EVALUATION LOG

Drilling Rate		MD meters	TVDRT meters	Cuttings Lithology	Visual Inferred Porosity	Oil Show	Gas Data				Chromatograph Data				Calcmetry	Interpreted Lithology	Lithology Description
ROP (m/hr)							Gas Hydrocarbon Avg %				1						
200	200						0.1	1	10	100	Propane ppm	100000					
180	180										iso-Butane ppm	100000					
160	160										n-Butane ppm	100000					
140	140										iso-Pentane ppm	100000					
120	120										n-Pentane ppm						
100	100																
80	80																
60	60																
40	40																
20	20																
MWD.SGRS		1000															
GAPI																	
MWD.SESP		10															
OHMM																	
MWD.SEDP		10															
OHMM																	



Elver-1 spudded @ 17:40 hrs on 20th December 2008

All measurements in meters referenced from rotary table (RT)
 RT - AHD = 21.5 m
 Water Depth = 504.9 m
 RT - Seabed = 526.4 m

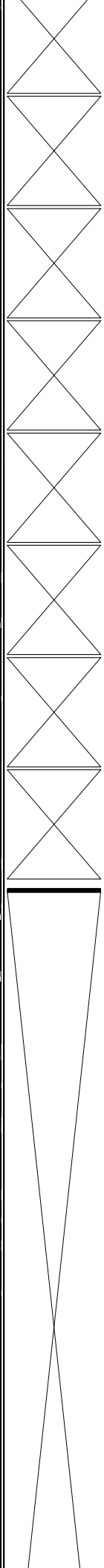
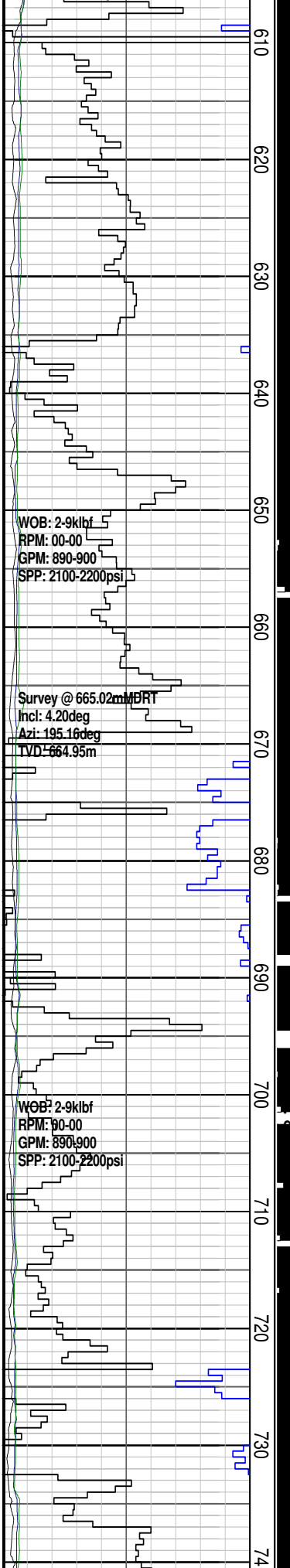
Drill 914mm (36") hole w/ seawater and hi-vis sweeps>Returns to seabed

Set 762mm (30") casing @ 572.9 mMDRT

Drill 914mm (36") hole to 572.9mMDRT

Drill 406mm (16") hole w/ seawater

RPM: 00-00
GPM: 890-900
SPP: 2100-2200psi



Survey @ 607.72mMDRT
Incl: 1.25deg
Azi: 216.24deg
TVD: 607.71m

Survey @ 636.20mMDRT
Incl: 2.69deg
Azi: 199.00deg
TVD: 636.18m

Survey @ 654.71mMDRT
Incl: 3.58deg
Azi: 194.43deg
TVD: 654.66m

WOB: 2.9klbf
RPM: 00-00
GPM: 890-900
SPP: 2100-2200psi

Survey @ 665.02mMDRT
Incl: 4.20deg
Azi: 195.16deg
TVD: 664.95m

Survey @ 683.35mMDRT
Incl: 5.49deg
Azi: 193.28deg
TVD: 683.21m

Survey @ 693.33mMDRT
Incl: 6.32deg
Azi: 191.52deg
TVD: 693.14m

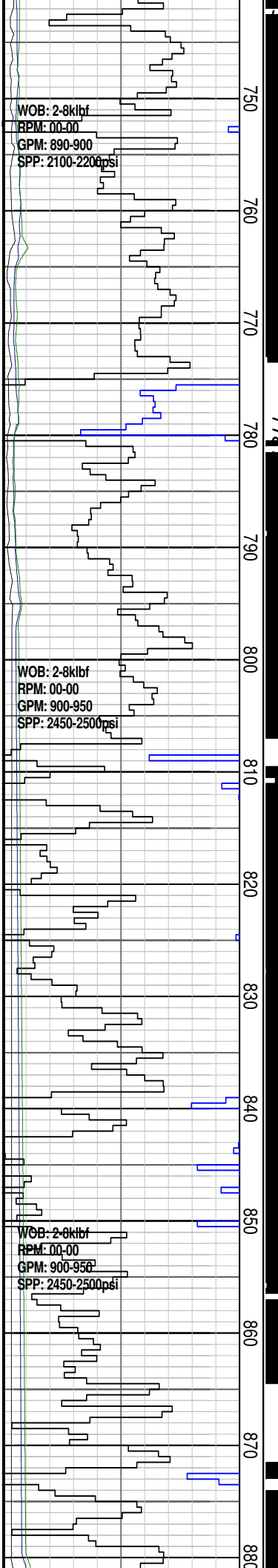
WOB: 2.9klbf
RPM: 00-00
GPM: 890-900
SPP: 2100-2200psi

Survey @ 722.44mMDRT
Incl: 8.88deg
Azi: 186.99deg
TVD: 721.99m

and hi-vis gel sweeps. Returns to seabed.

Drill 406mm (16") hole w/ seawater and hi-vis gel sweeps. Returns to seabed.

Drill 406mm (16") hole w/ seawater and hi-vis gel sweeps. Returns to seabed.



WOB: 2-8klbf
 RPM: 00-00
 GPM: 890-900
 SPP: 2100-2200psi

WOB: 2-8klbf
 RPM: 00-00
 GPM: 900-950
 SPP: 2450-2500psi

WOB: 2-8klbf
 RPM: 00-00
 GPM: 900-950
 SPP: 2450-2500psi

Survey @ 750.81mMDRT
 Incl: 11.95deg
 Azi: 182.44deg
 TVD: 749.89m

Survey @ 779.60mMDRT
 Incl: 13.44deg
 Azi: 182.44deg
 TVD: 777.97m

Survey @ 814.19mMDRT
 Incl: 15.56deg
 Azi: 190.62deg
 TVD: 811.46m

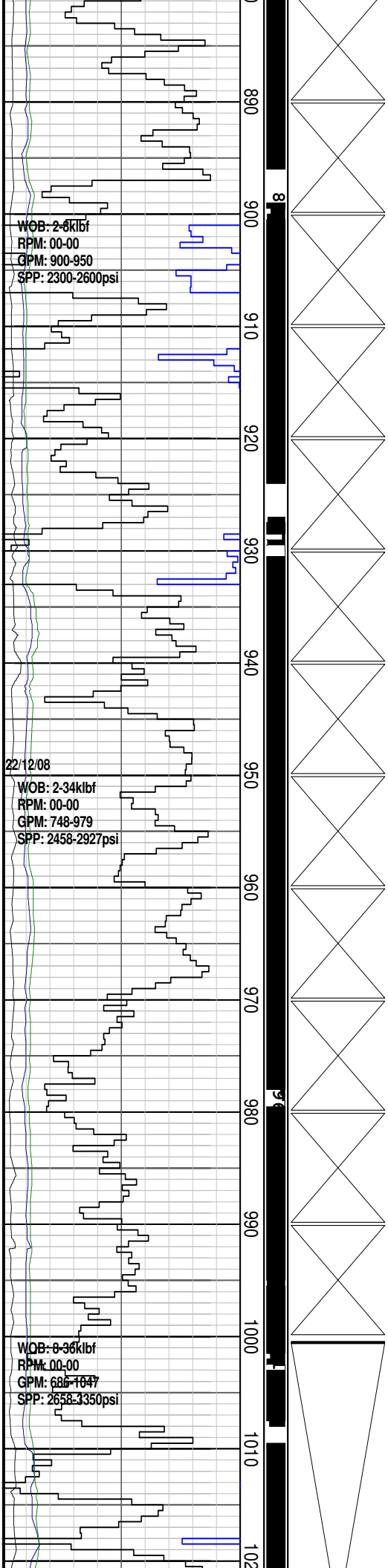
Survey @ 842.98mMDRT
 Incl: 19.17deg
 Azi: 193.57deg
 TVD: 838.94m

Survey @ 871.68mMDRT
 Incl: 20.62deg
 Azi: 194.19deg
 TVD: 865.92m

Drill 406mm (16") hole w/ seawater and hi-vis gel sweeps. Returns to seabed.

Drill 406mm (16") hole w/ seawater and hi-vis gel sweeps. Returns to seabed.

Drill 406mm (16") hole w/ seawater and hi-vis gel sweeps. Returns to seabed.



Survey @ 895.45mMDRT
Incl: 22.54deg
Azi: 193.03deg
TVD: 888.03m

Survey @ 924.90mMDRT
Incl: 24.17deg
Azi: 197.59deg
TVD: 915.06m

Survey @ 952.68mMDRT
Incl: 25.47deg
Azi: 194.80deg
TVD: 940.28m

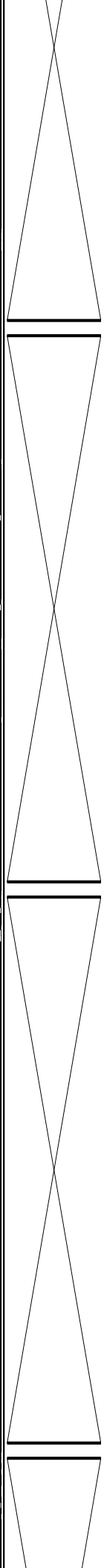
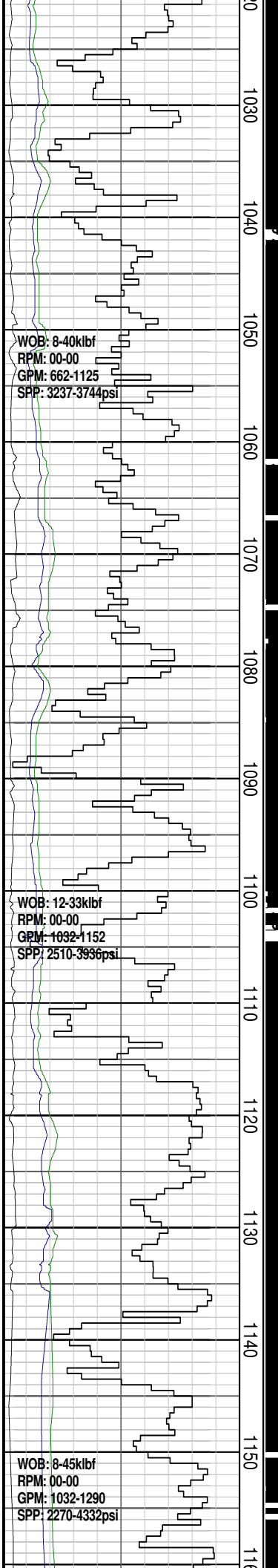
Survey @ 981.86mMDRT
Incl: 28.37deg
Azi: 192.20deg
TVD: 966.29m

Survey @ 1009.73mMDRT
Incl: 30.90deg
Azi: 192.87deg
TVD: 990.56m

Drill 406mm (16") hole w/ seawater and hi-vis gel sweeps. Returns to seabed.

Drill 406mm (16") hole w/ seawater and hi-vis gel sweeps. Returns to seabed.

Drill 406mm (16") hole w/ seawater and hi-vis gel sweeps. Returns to seabed.



Survey @ 1039.49mMDRT
Incl: 33.01deg
Azi: 194.58deg
TVD: 1015.77m

Survey @ 1067.30mMDRT
Incl: 35.27deg
Azi: 196.86deg
TVD: 1038.78m

Survey @ 1097.02mMDRT
Incl: 36.46deg
Azi: 198.81deg
TVD: 1062.87m

Survey @ 1125.42mMDRT
Incl: 37.85deg
Azi: 194.86deg
TVD: 1085.51m

Survey @ 1159.87mMDRT

Drill 406mm (16") hole w/ seawater and hi-vis gel sweeps. Returns to seabed.

Drill 406mm (16") hole w/ seawater and hi-vis gel sweeps. Returns to seabed.

Drill 406mm (16") hole w/ seawater and hi-vis gel sweeps. Returns to seabed.

Incl: 38.82deg
Azi: 196.61deg
TVD: 1112.53m

Survey @ 1188.66mMDRT
Incl: 42.24deg
Azi: 197.32deg
TVD: 1134.41m

Survey @ 1217.27mMDRT
Incl: 48.01deg
Azi: 197.75deg
TVD: 1154.59m

Survey @ 1238.31mMDRT
Incl: 50.20deg
Azi: 196.21deg
TVD: 1168.36m

Survey @ 1270.80mMDRT
Incl: 50.77deg
Azi: 196.32deg
TVD: 1189.03m

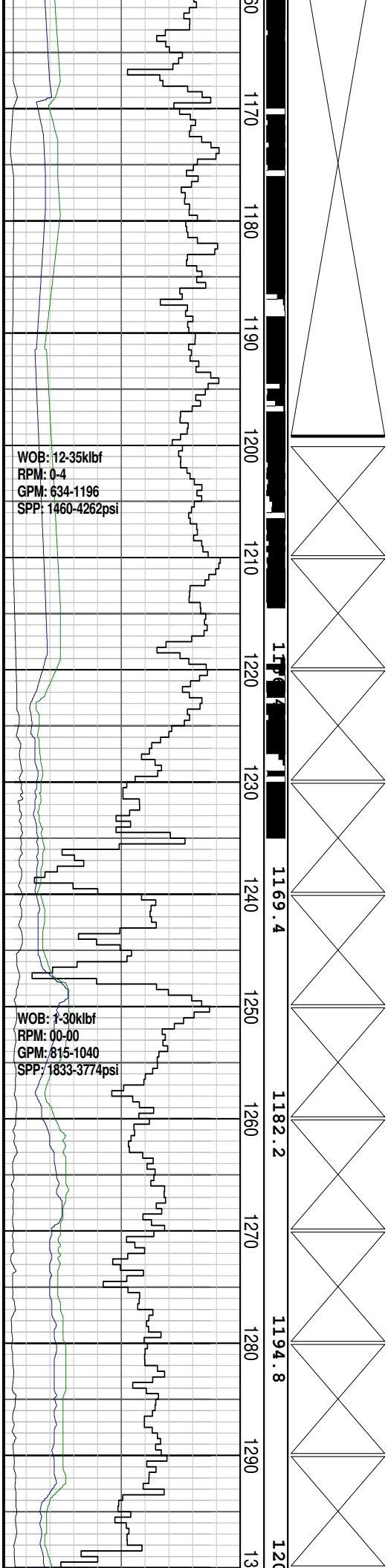
Survey @ 1299.61mMDRT

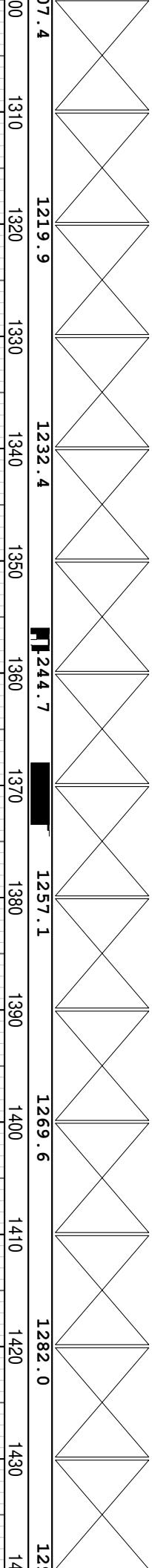
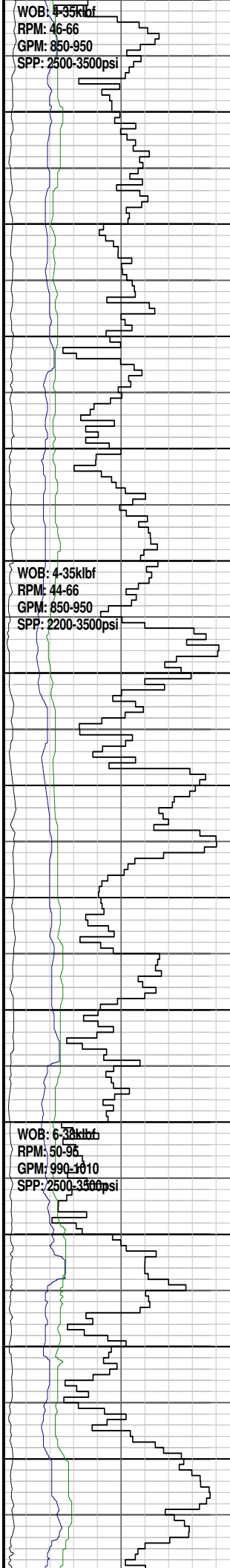
WOB: 12-35klbf
RPM: 0-4
GPM: 634-1196
SPP: 1460-4262psi

WOB: 1-30klbf
RPM: 00-00
GPM: 815-1040
SPP: 1833-3774psi

Drill 406mm (16") hole w/ seawater and hi-vis gel sweeps. Returns to seabed.

Drill 406mm (16") hole w/ seawater and hi-vis gel sweeps. Returns to seabed.





WOB: 4-35kbf
RPM: 46-66
GPM: 850-950
SPP: 2500-3500psi

WOB: 4-35kbf
RPM: 44-66
GPM: 850-950
SPP: 2200-3500psi

WOB: 6-38kbf
RPM: 50-95
GPM: 990-1010
SPP: 2500-3500psi

Survey @ 1299.0mmMDRT
Incl: 51.38deg
Azi: 196.11deg
TVD: 1207.14m

Survey @ 1328.78mMDRT
Incl: 51.02deg
Azi: 196.11deg
TVD: 1225.41m

Survey @ 1353.78mMDRT
Incl: 51.02deg
Azi: 196.11deg
TVD: 1225.41m

Survey @ 1384.89mMDRT
Incl: 51.25deg
Azi: 195.67deg
TVD: 1260.16m

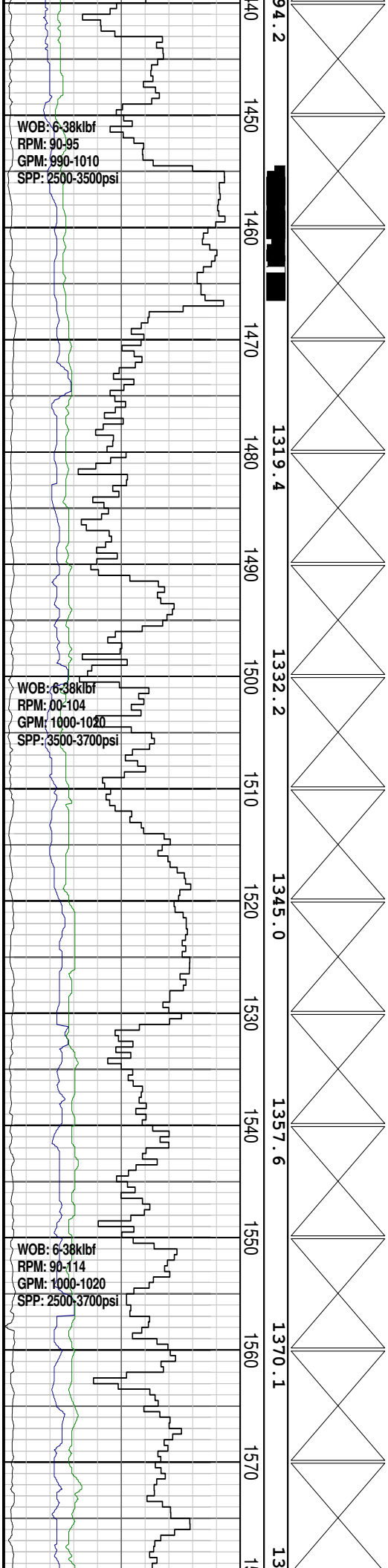
WOB: 6-38kbf
RPM: 50-95
GPM: 990-1010
SPP: 2500-3500psi

Survey @ 1415.19mMDRT
Incl: 51.76deg
Azi: 195.40deg
TVD: 1296.30m

Drill 406mm (16") hole w/ seawater and hi-vis gel sweeps. Returns to seabed.

Drill 406mm (16") hole w/ seawater and hi-vis gel sweeps. Returns to seabed.

Drill 406mm (16") hole w/ seawater and hi-vis gel sweeps. Returns to seabed.



Survey @ 1443.77mMDRT
 Incl: 52.76deg
 Azi: 195.01deg
 TVD: 1314.30m

Drill 406mm (16") hole w/ seawater and hi-vis gel sweeps. Returns to seabed.

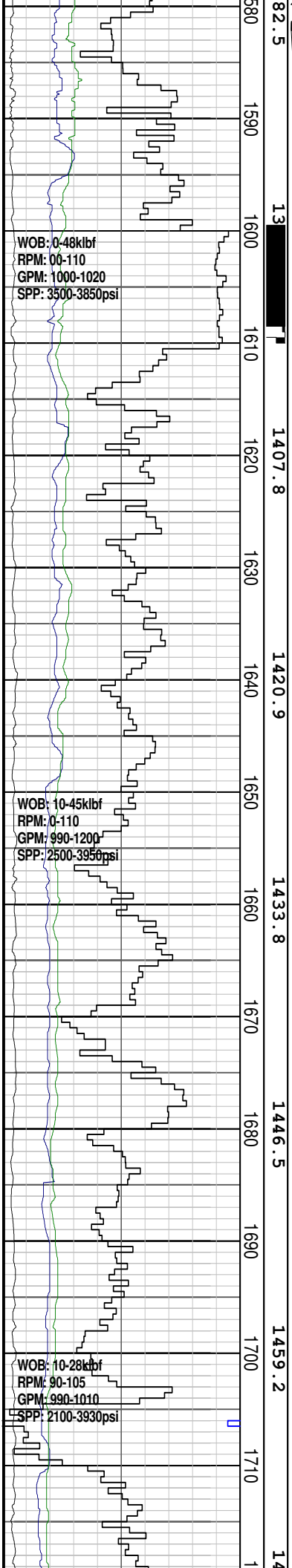
Survey @ 1501.31mMDRT
 Incl: 50.19deg
 Azi: 194.04deg
 TVD: 1332.90m

Drill 406mm (16") hole w/ seawater and hi-vis gel sweeps. Returns to seabed.

Survey @ 1530.05mMDRT
 Incl: 50.30deg
 Azi: 193.58deg
 TVD: 1351.10m

Survey @ 1538.72mMDRT
 Incl: 51.56deg
 Azi: 193.59deg
 TVD: 1369.10m

Drill 406mm (16") hole w/ seawater and hi-vis gel sweeps. Returns to seabed.



WOB: 0-48klbf
 RPM: 00-110
 GPM: 1000-1020
 SPP: 3500-3850psi

WOB: 10-45klbf
 RPM: 0-110
 GPM: 990-1200
 SPP: 2500-3950psi

WOB: 10-28klbf
 RPM: 90-105
 GPM: 990-1010
 SPP: 2100-3930psi

13

1407.8

1420.9

1433.8

1446.5

1459.2

14

Survey @ 1616.25mMDRT
 Incl: 49.02deg
 Azi: 192.24deg
 TVD: 1405.1m

Survey @ 1645.25mMDRT
 Incl: 49.76deg
 Azi: 191.75deg
 TVD: 1424.00m

Survey @ 1674.25mMDRT
 Incl: 50.37deg
 Azi: 192.14deg
 TVD: 1442.60m

Survey @ 1703.45mMDRT
 Incl: 50.90deg
 Azi: 192.04deg
 TVD: 1461.20m

Drill 406mm (16") hole w/ seawater and hi-vis gel sweeps. Returns to seabed.

Drill 406mm (16") hole w/ seawater and hi-vis gel sweeps. Returns to seabed.

Drill 406mm (16") hole w/ seawater and hi-vis gel sweeps. Returns to seabed.

