



Company : Apache

Well : Elver-1

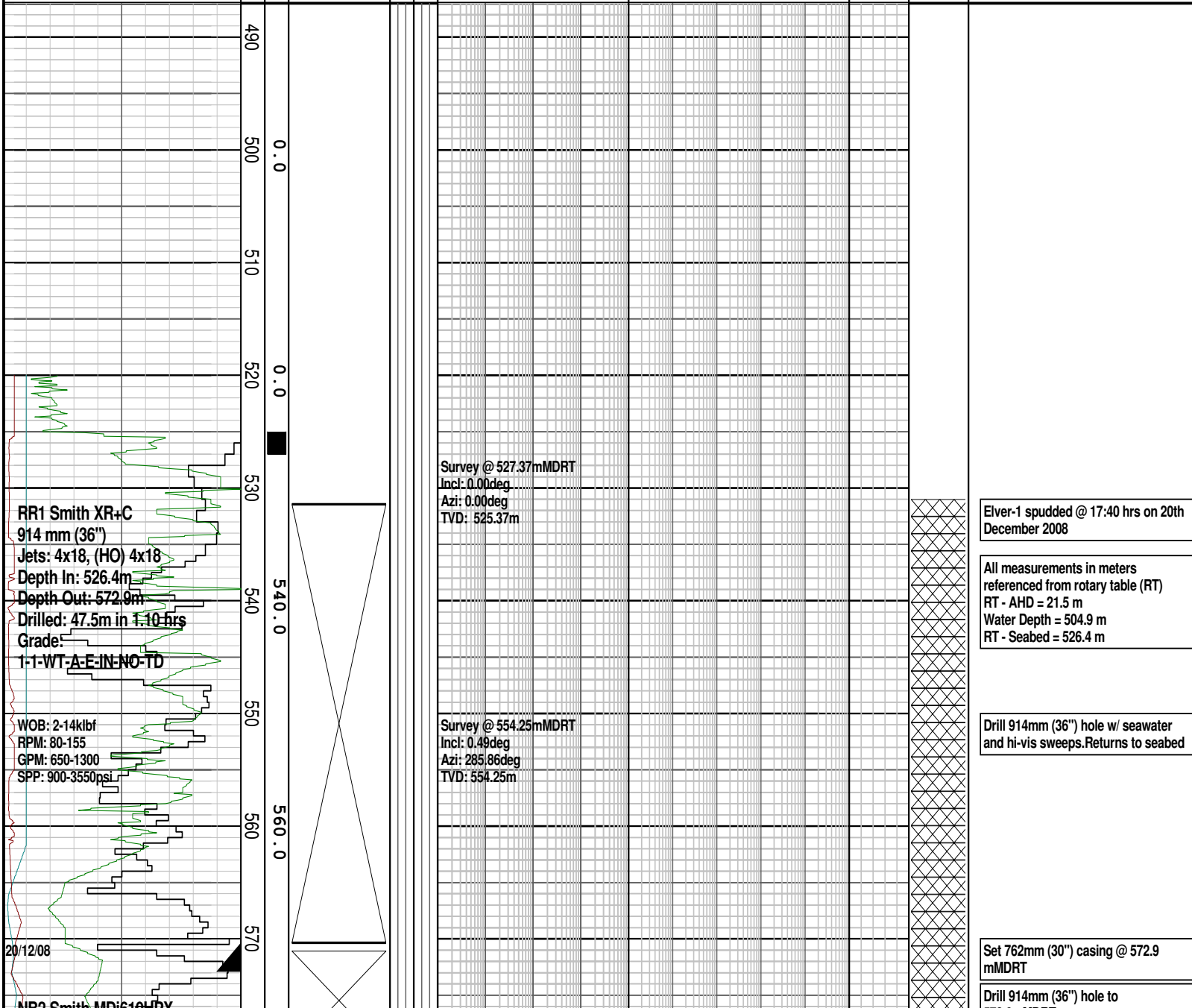
Interval : 487.00 - 1774.33 meters

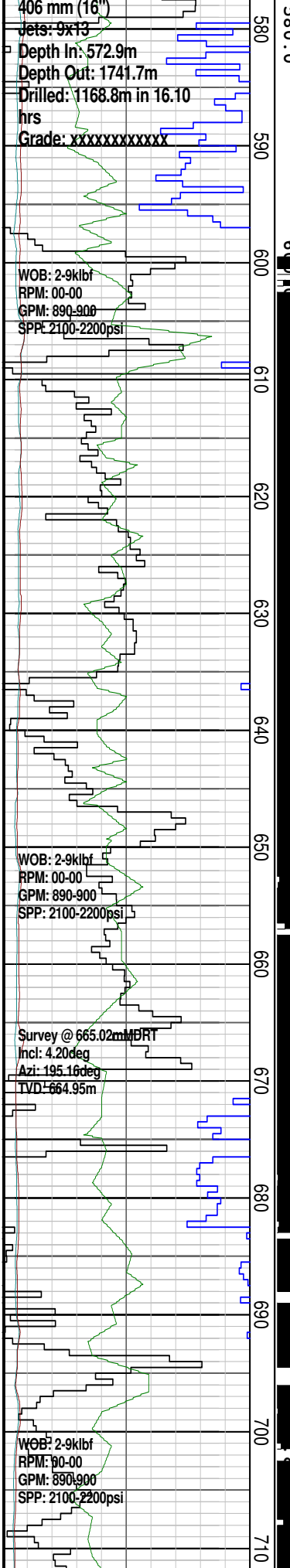
Created : 23/Dec/2008 7:05:33 AM

INTEQ

### FORMATION EVALUATION LOG

Drilling Rate		MD meters	TVDRT meters	Cuttings Lithology	Oil Show P F G	Visual Inferred Porosity P F G	Gas Data	Chromatograph Data	Calcmetry	Interpreted Lithology	Lithology Description
ROP (m/hr)	ROP (m/hr)										
200	20	200									
180	40	220									
160	60	240									
140	80	260									
120	100	280									
100	120	300									
80	140	320									
60	160	340									
40	180	360									
20	200	380									
	220	400									
MWD.SGRS		100									
GAPI		10									
MWD.SESP		10									
OHMM		10									
MWD.SEDP		10									
OHMM											

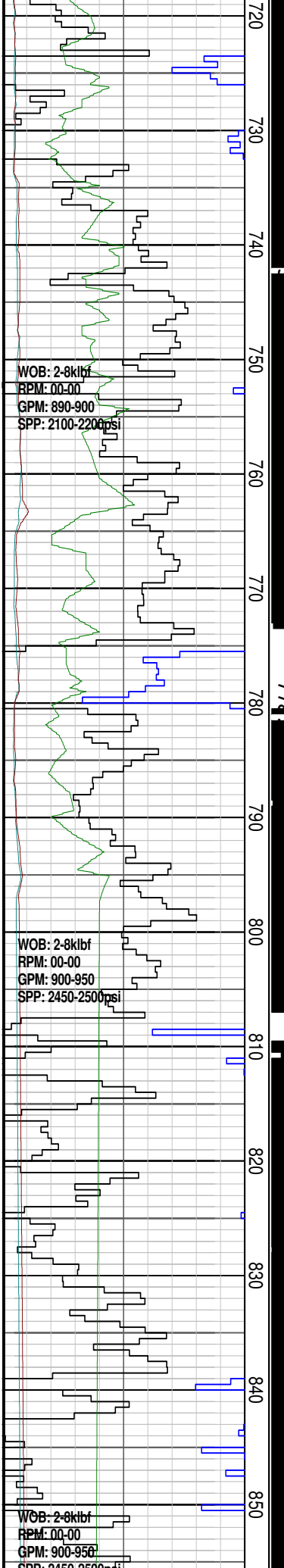




Drill 406mm (16") hole w/ seawater and hi-vis gel sweeps. Returns to seabed.

Drill 406mm (16") hole w/ seawater and hi-vis gel sweeps. Returns to seabed.

Drill 406mm (16") hole w/ seawater and hi-vis gel sweeps. Returns to seabed.



WOB: 2-8klbf  
 RPM: 00-00  
 GPM: 890-900  
 SPP: 2100-2200psi

WOB: 2-8klbf  
 RPM: 00-00  
 GPM: 900-950  
 SPP: 2450-2500psi

WOB: 2-8klbf  
 RPM: 00-00  
 GPM: 900-950  
 SPP: 2450-2500psi

Survey @ 722.44mMDRT  
 Incl: 8.88deg  
 Azi: 186.99deg  
 TVD: 721.99m

Survey @ 750.81mMDRT  
 Incl: 11.95deg  
 Azi: 182.44deg  
 TVD: 749.89m

Survey @ 779.60mMDRT  
 Incl: 13.44deg  
 Azi: 182.44deg  
 TVD: 777.97m

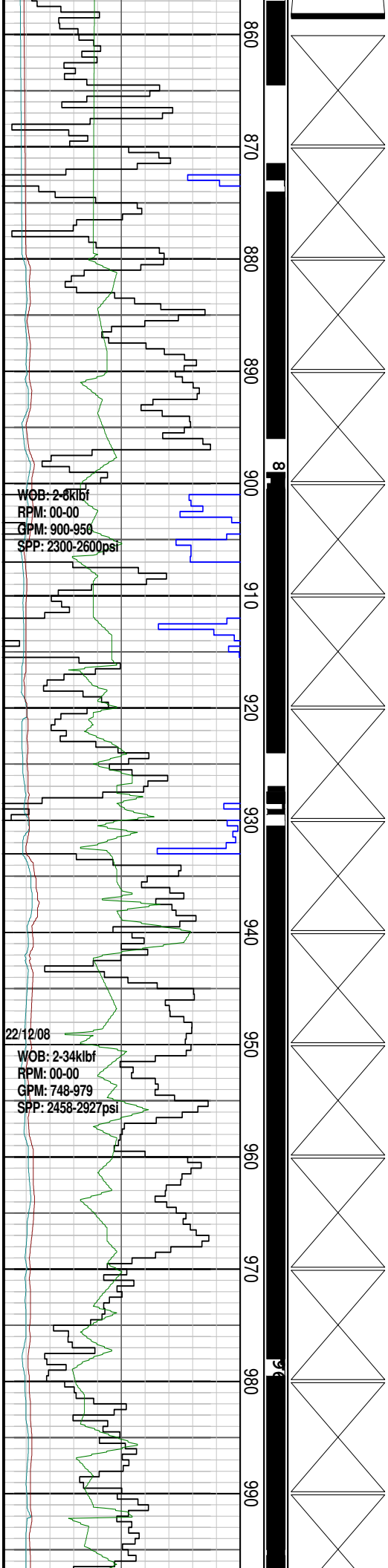
Survey @ 814.19mMDRT  
 Incl: 15.56deg  
 Azi: 190.62deg  
 TVD: 811.46m

Survey @ 842.98mMDRT  
 Incl: 19.17deg  
 Azi: 193.57deg  
 TVD: 838.94m

Drill 406mm (16") hole w/ seawater and hi-vis gel sweeps. Returns to seabed.

Drill 406mm (16") hole w/ seawater and hi-vis gel sweeps. Returns to seabed.

Drill 406mm (16") hole w/ seawater and hi-vis gel sweeps. Returns to seabed.



WOB: 2-8klbf  
 RPM: 00-00  
 GPM: 900-950  
 SPP: 2300-2600psi

22/12/08  
 WOB: 2-34klbf  
 RPM: 00-00  
 GPM: 748-979  
 SPP: 2458-2927psi

Survey @ 871.68mMDRT  
 Incl: 20.62deg  
 Azi: 194.19deg  
 TVD: 865.92m

Survey @ 895.45mMDRT  
 Incl: 22.54deg  
 Azi: 193.03deg  
 TVD: 888.03m

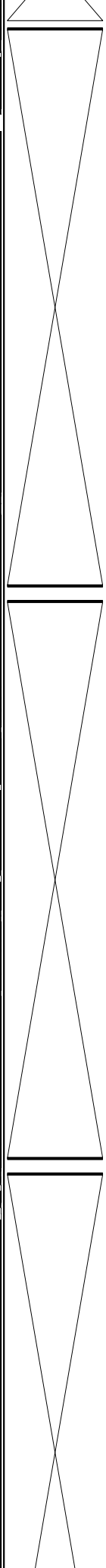
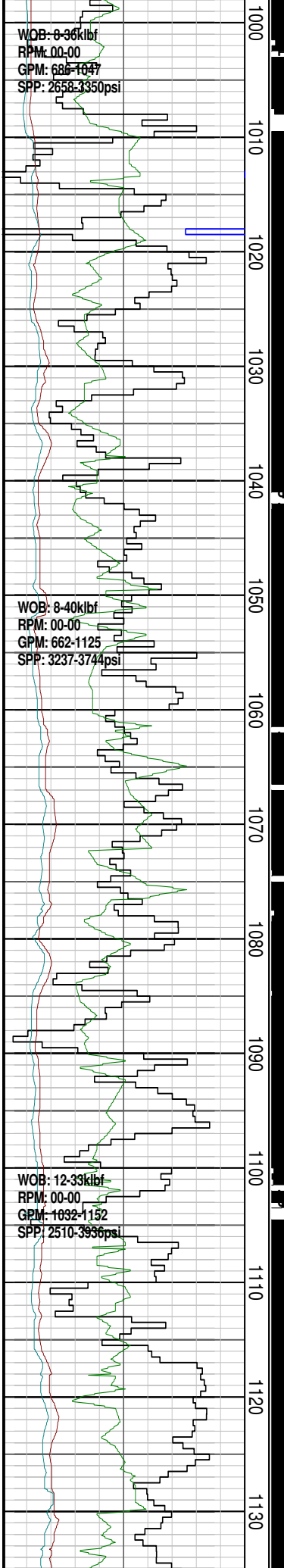
Survey @ 924.90mMDRT  
 Incl: 24.17deg  
 Azi: 197.59deg  
 TVD: 915.06m

Survey @ 952.68mMDRT  
 Incl: 25.47deg  
 Azi: 194.80deg  
 TVD: 940.28m

Survey @ 981.86mMDRT  
 Incl: 28.37deg  
 Azi: 192.20deg  
 TVD: 966.29m

Drill 406mm (16") hole w/ seawater and hi-vis gel sweeps. Returns to seabed.

Drill 406mm (16") hole w/ seawater and hi-vis gel sweeps. Returns to seabed.



Survey @ 1009.79mMDRT  
Incl: 30.90deg  
Azi: 192.87deg  
TVD: 990.56m

Survey @ 1039.49mMDRT  
Incl: 33.01deg  
Azi: 194.58deg  
TVD: 1015.77m

Survey @ 1067.30mMDRT  
Incl: 35.27deg  
Azi: 196.86deg  
TVD: 1038.78m

Survey @ 1097.02mMDRT  
Incl: 36.46deg  
Azi: 198.81deg  
TVD: 1062.87m

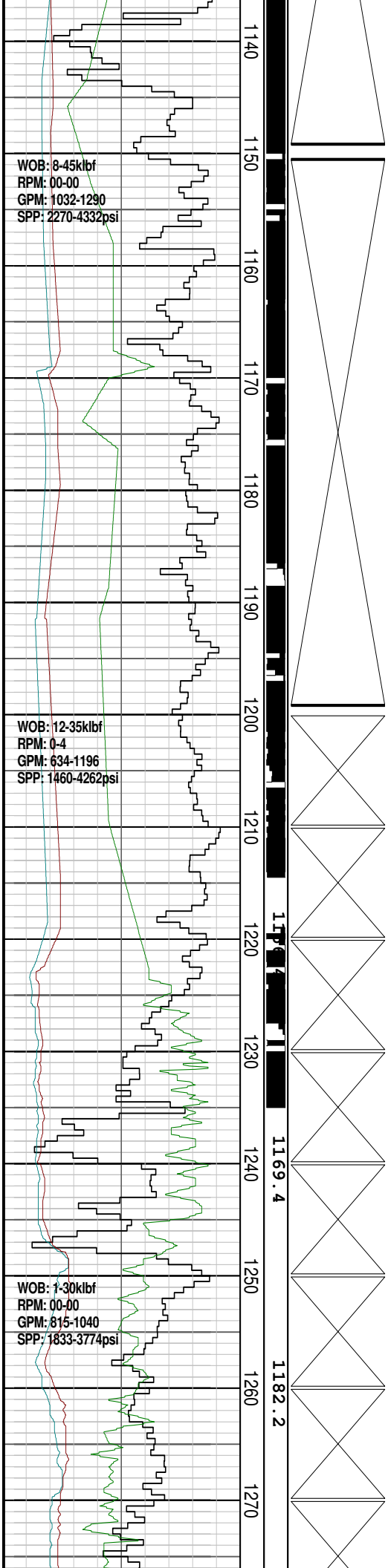
Survey @ 1125.42mMDRT  
Incl: 37.85deg  
Azi: 194.86deg  
TVD: 1085.51m

Drill 406mm (16") hole w/ seawater and hi-vis gel sweeps. Returns to seabed.

Drill 406mm (16") hole w/ seawater and hi-vis gel sweeps. Returns to seabed.

Drill 406mm (16") hole w/ seawater and hi-vis gel sweeps. Returns to seabed.





Survey @ 1159.87mMDRT  
Incl: 38.82deg  
Azi: 196.61deg  
TVD: 1112.53m

Survey @ 1188.66mMDRT  
Incl: 42.24deg  
Azi: 197.32deg  
TVD: 1134.41m

Survey @ 1217.27mMDRT  
Incl: 48.01deg  
Azi: 197.75deg  
TVD: 1154.59m

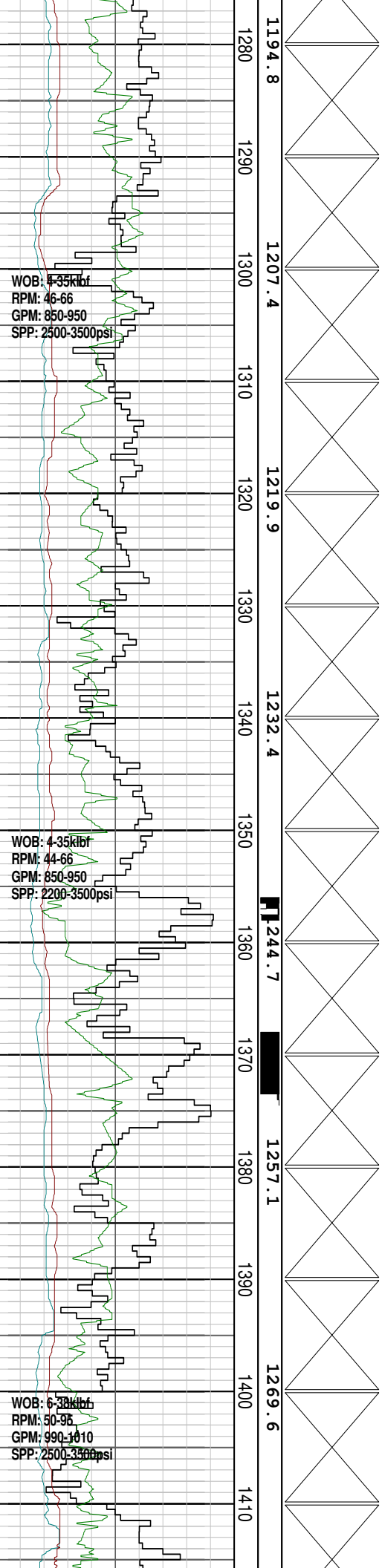
Survey @ 1238.31mMDRT  
Incl: 50.20deg  
Azi: 196.21deg  
TVD: 1168.36m

Survey @ 1270.80mMDRT  
Incl: 50.77deg  
Azi: 196.32deg  
TVD: 1189.03m

Drill 406mm (16") hole w/ seawater and hi-vis gel sweeps. Returns to seabed.

Drill 406mm (16") hole w/ seawater and hi-vis gel sweeps. Returns to seabed.

Drill 406mm (16") hole w/ seawater and hi-vis gel sweeps. Returns to seabed.



WOB: 4-35klbf  
 RPM: 46-66  
 GPM: 850-950  
 SPP: 2500-3500psi

WOB: 4-35klbf  
 RPM: 44-66  
 GPM: 850-950  
 SPP: 2200-3500psi

WOB: 6-38klbf  
 RPM: 50-95  
 GPM: 990-1010  
 SPP: 2500-3500psi

1194.8  
 1207.4  
 1219.9  
 1232.4  
 1244.7  
 1257.1  
 1269.6

Survey @ 1299.61mMDRT  
 Incl: 51.38deg  
 Azi: 196.11deg  
 TVD: 1207.14m

Survey @ 1328.78mMDRT  
 Incl: 51.02deg  
 Azi: 196.11deg  
 TVD: 1225.41m

Survey @ 1353.78mMDRT  
 Incl: 51.02deg  
 Azi: 196.11deg  
 TVD: 1225.41m

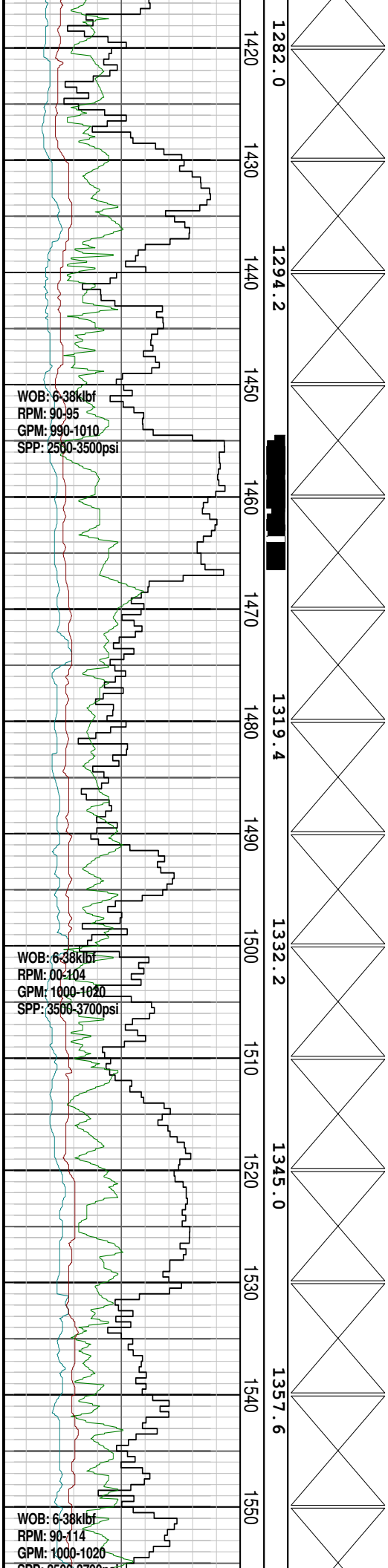
Survey @ 1384.89mMDRT  
 Incl: 51.25deg  
 Azi: 195.67deg  
 TVD: 1260.16m

WOB: 6-38klbf  
 RPM: 50-95  
 GPM: 990-1010  
 SPP: 2500-3500psi

Drill 406mm (16") hole w/ seawater and hi-vis gel sweeps. Returns to seabed.

Drill 406mm (16") hole w/ seawater and hi-vis gel sweeps. Returns to seabed.

Drill 406mm (16") hole w/ seawater and hi-vis gel sweeps. Returns to seabed.



WOB: 6-38klbf  
 RPM: 90-95  
 GPM: 990-1010  
 SPP: 2500-3500psi

WOB: 6-38klbf  
 RPM: 00-104  
 GPM: 1000-1020  
 SPP: 3500-3700psi

WOB: 6-38klbf  
 RPM: 90-114  
 GPM: 1000-1020  
 SPP: 2500-3500psi

1282.0  
 1294.2  
 1319.4  
 1332.2  
 1345.0  
 1357.6

Survey @ 1415.19mMDRT  
 Incl: 51.76deg  
 Azi: 195.40deg  
 TVD: 1296.30m

Survey @ 1443.77mMDRT  
 Incl: 52.76deg  
 Azi: 195.01deg  
 TVD: 1314.30m

Survey @ 1501.31mMDRT  
 Incl: 50.19deg  
 Azi: 194.04deg  
 TVD: 1332.90m

Survey @ 1530.05mMDRT  
 Incl: 50.30deg  
 Azi: 193.58deg  
 TVD: 1351.10m

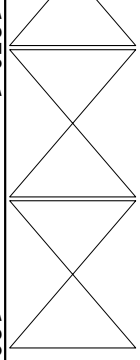
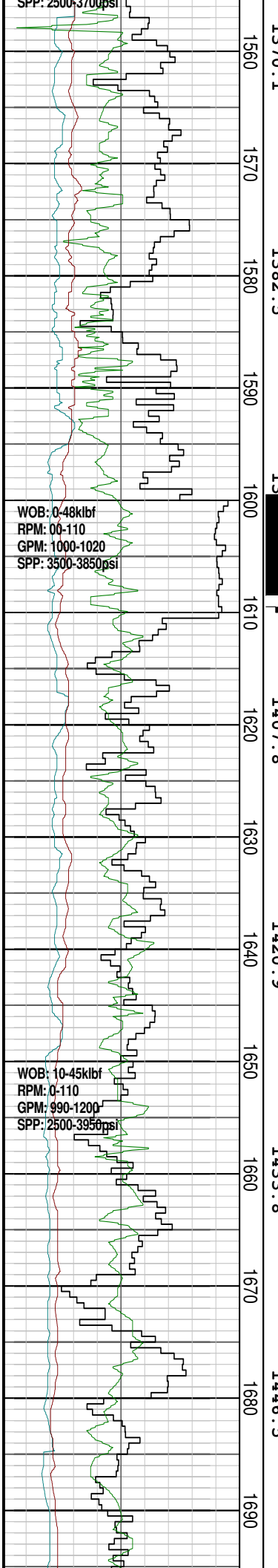
Survey @ 1538.72mMDRT  
 Incl: 51.56deg  
 Azi: 193.59deg  
 TVD: 1369.10m

Drill 406mm (16") hole w/ seawater and hi-vis gel sweeps. Returns to seabed.

Drill 406mm (16") hole w/ seawater and hi-vis gel sweeps. Returns to seabed.

Drill 406mm (16") hole w/ seawater and hi-vis gel sweeps. Returns to seabed.





1370.1  
 1570  
 1382.5  
 13  
 1407.8  
 1420.9  
 1433.8  
 1446.5

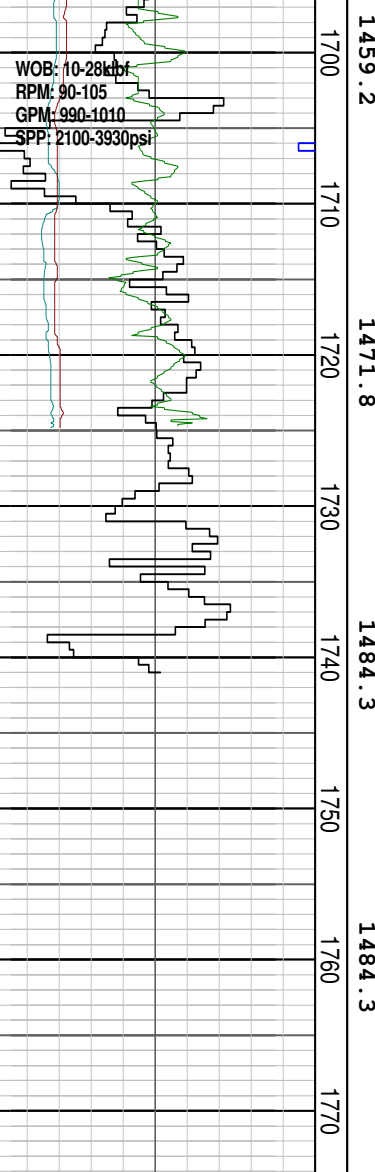
Survey @ 1616.25mMDRT  
 Incl: 49.02deg  
 Azi: 192.24deg  
 TVD: 1405.1m

Survey @ 1645.25mMDRT  
 Incl: 49.76deg  
 Azi: 191.75deg  
 TVD: 1424.00m

Survey @ 1674.25mMDRT  
 Incl: 50.37deg  
 Azi: 192.14deg  
 TVD: 1442.60m

Drill 406mm (16") hole w/ seawater  
 and hi-vis gel sweeps. Returns to  
 seabed.

Drill 406mm (16") hole w/ seawater  
 and hi-vis gel sweeps. Returns to  
 seabed.



1459.2  
 1700  
 1710  
 1720  
 1730  
 1740  
 1750  
 1760  
 1770

1471.8  
 1484.3  
 1484.3

Survey @ 1703.46mMDRT  
 Incl: 50.90deg  
 Azi: 192.04deg  
 TVD: 1461.20m

Drill 406mm (16") hole w/ seawater and hi-vis gel sweeps. Returns to seabed.

Reached 406mm (16") Section TD @ 1741.7m at 22:50 hrs on 22/12/2008

### FORMATION EVALUATION LOG

Drilling Rate		TVDRT meters	Cuttings Lithology	Gas Data	Chromatograph Data	Calcremetry	Interpreted Lithology	Lithology Description
ROP (m/hr)	ROP (m/hr)							
20	220	MD meters 1:500						
40	240							
60	260							
80	280							
100	300							
120	320							
140	340							
160	360							
180	380							
200	400							
MWD.SGRS		100						
GAPI								
MWD.SESP		10						
OHMM								
MWD.SEDP		10						
OHMM								

Oil Show P F G  
 Visual Inferred Porosity P F G