

Elver-1_EcoScope_GeoVISION Service RM 200MD

Format: Elver-1_EcoScope_GVR_500MD

Vertical Scale: 1:500

Graphics File Created: 13-Jan-2009 03:19

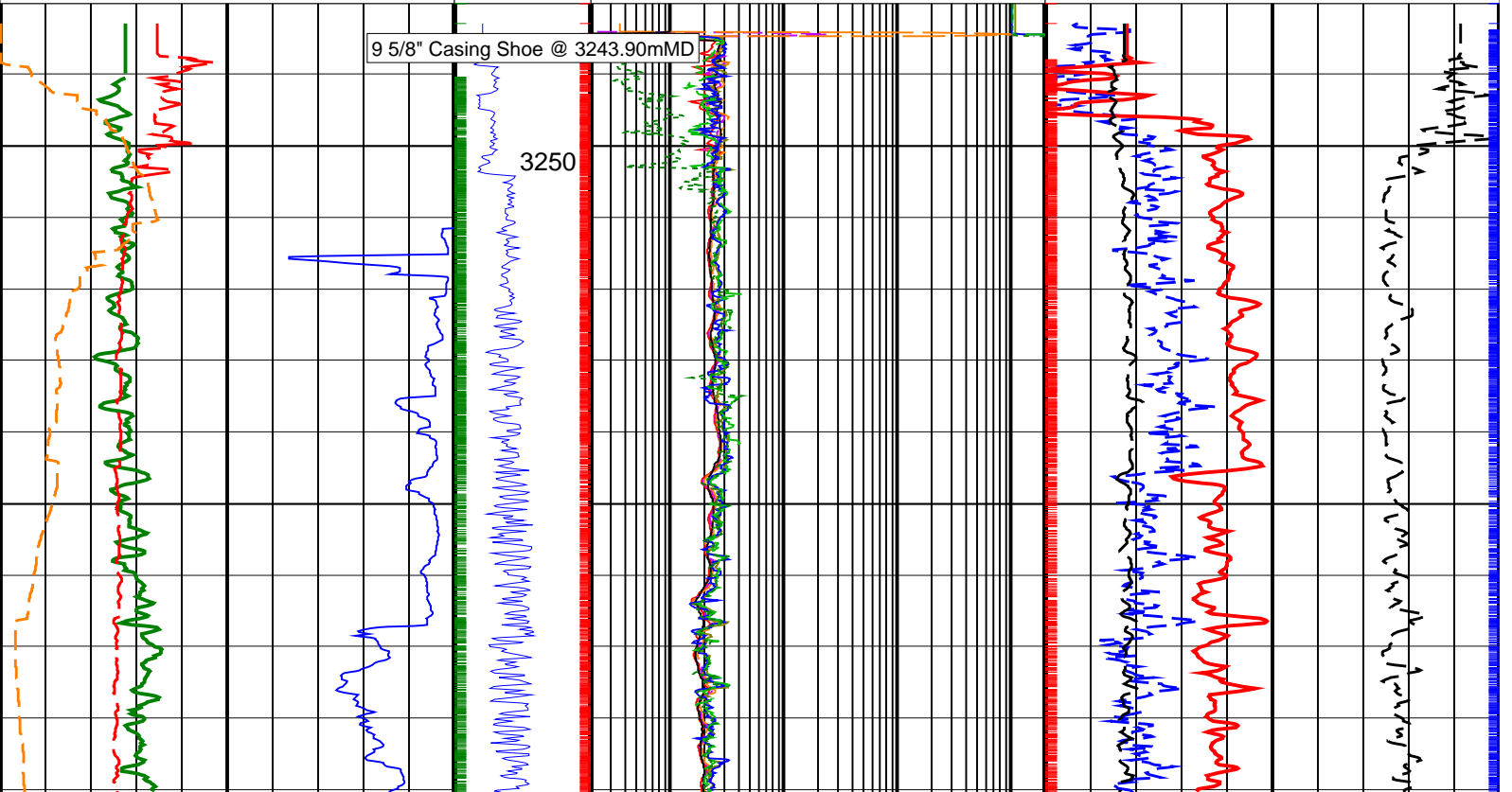
PIP SUMMARY

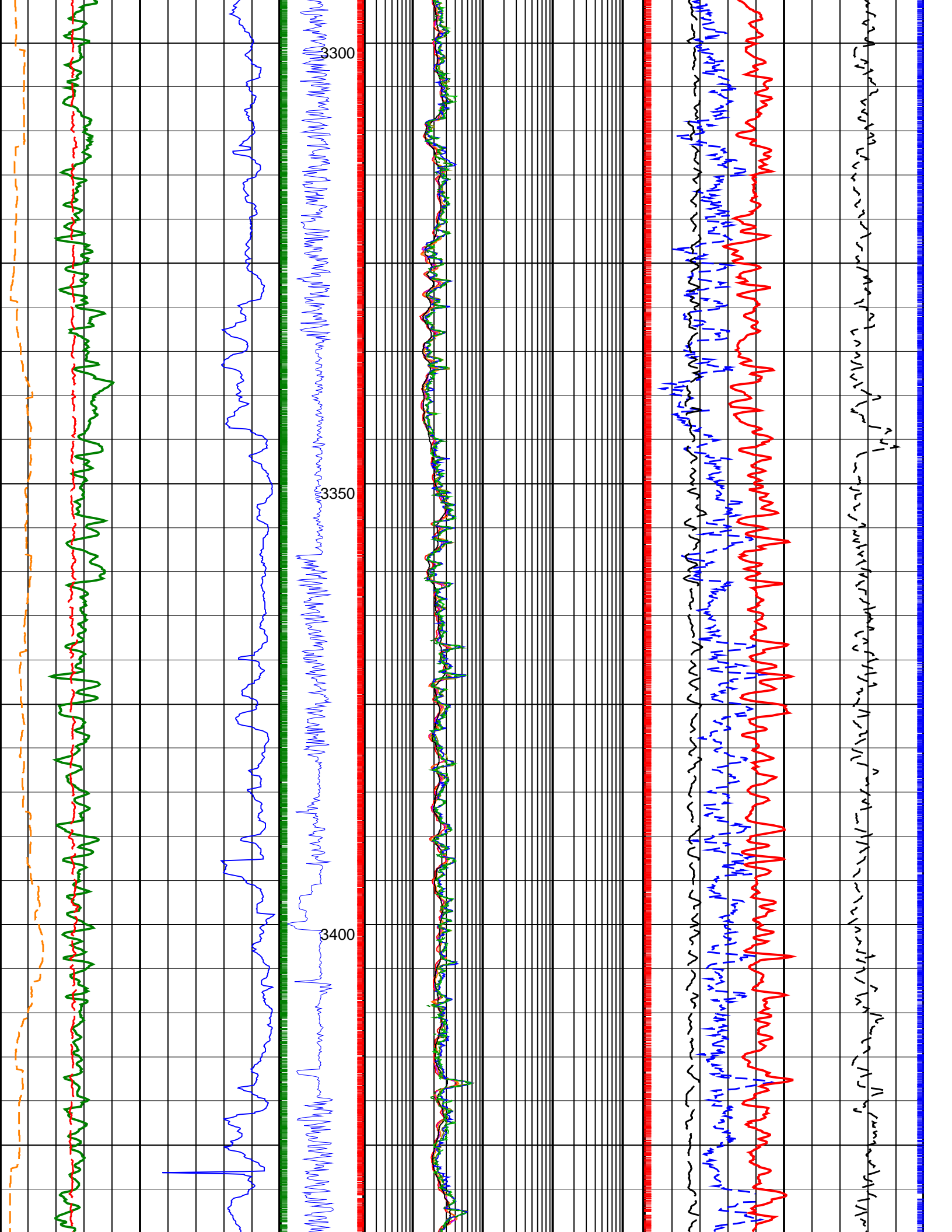
- ┆ Gamma Ray Samples
- ┆ Resistivity Samples

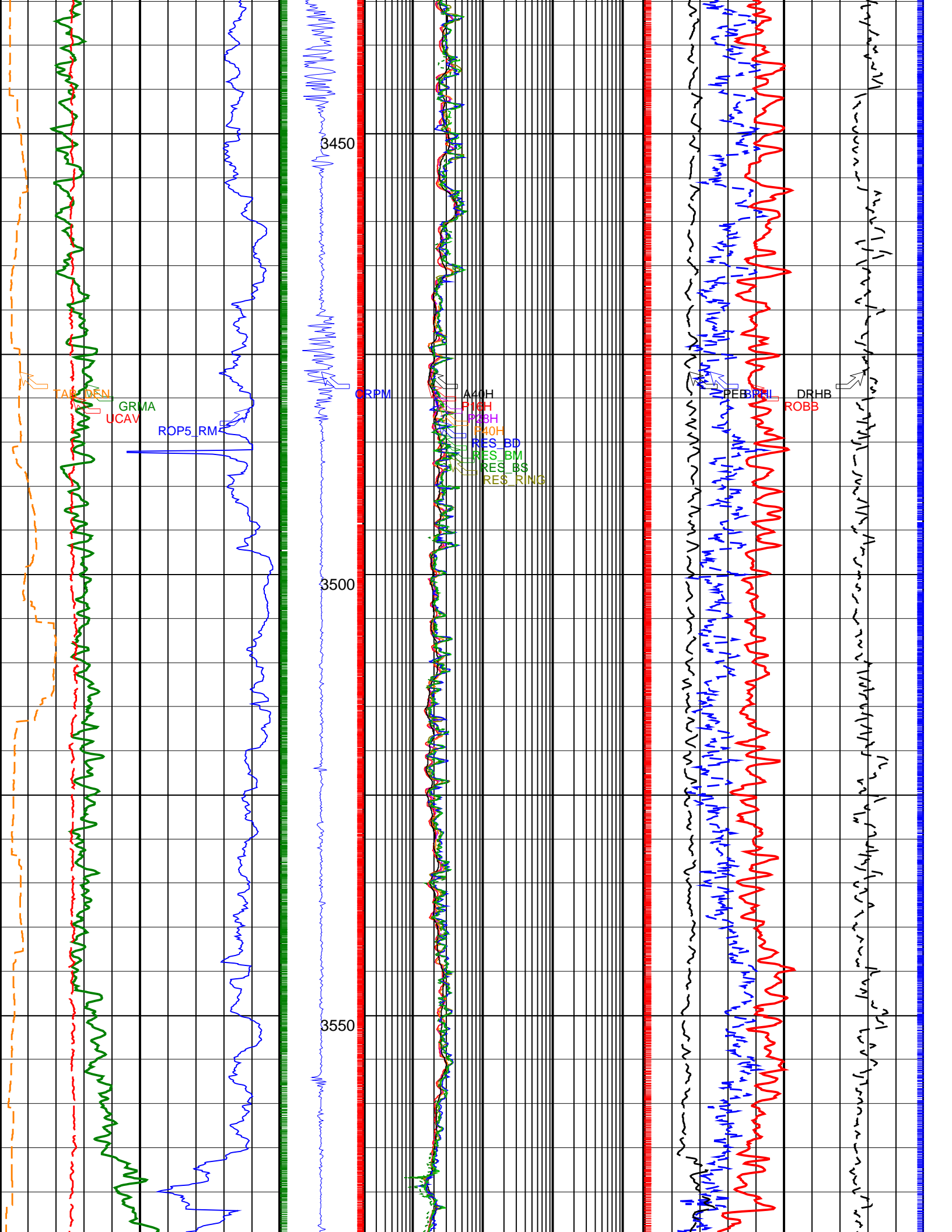
Density Ticks, 0.1 ft ┆

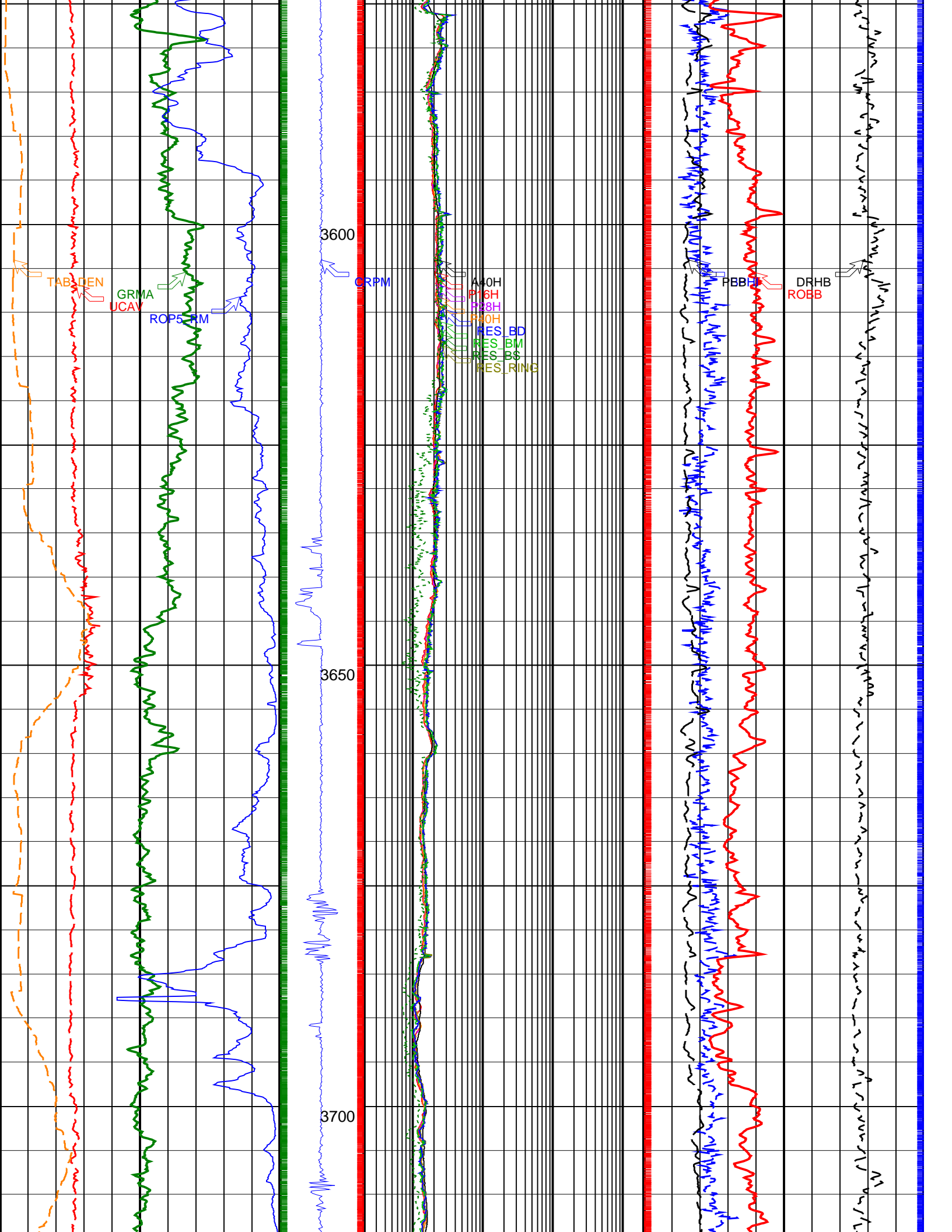
Neutron Ticks, 0.1 ft ┆

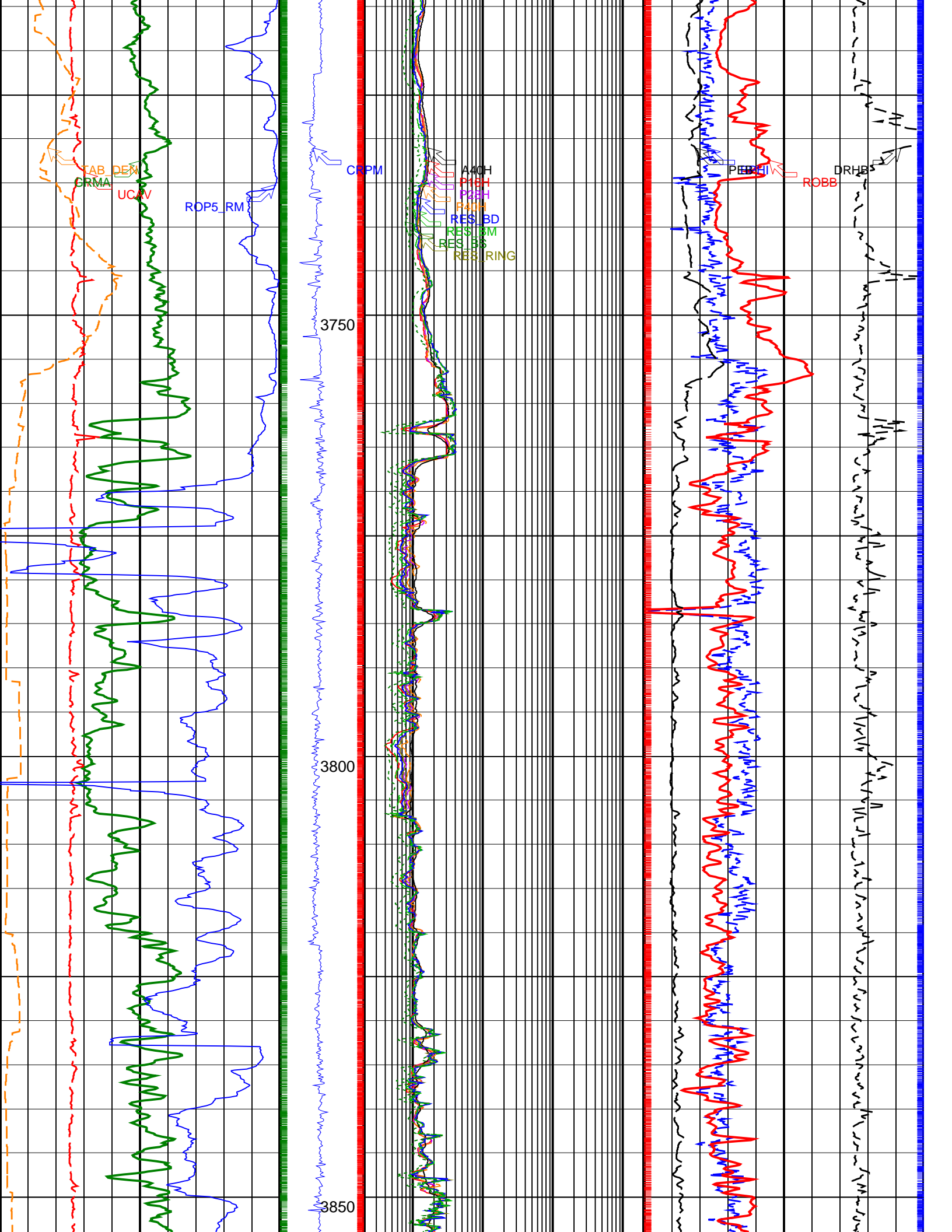
	<u>Shallow Button Resistivity (RES_BS)</u> 0.2 (OHMM) 2000		
	<u>Medium Button Resistivity (RES_BM)</u> 0.2 (OHMM) 2000		
	<u>Deep Button Resistivity (RES_BD)</u> 0.2 (OHMM) 2000		
	<u>Ring Resistivity (RES_RING)</u> 0.2 (OHMM) 2000		
<u>Time after BIT (between drilling and measurement) (TAB_DEN)</u> 0 (HR) 10	ARC Attenuation Resistivity 40 inch at 2 MHz (A40H) 0.2 (OHMM) 2000		
<u>Rate of Penetration, Averaged over Last 5ft (ROP5_RM)</u> 200 (M/HR) 0	ARC Phase Shift Resistivity 40 inch at 2 MHz (P40H) 0.2 (OHMM) 2000	Photoelectric Factor, Bottom (PEB) 0 (----) 10	Bulk Density Correction, Bottom (DRHB) -0.25 (G/C3) 0.25
<u>Gamma Ray, Average (GRMA)</u> 0 (GAPI) 200	ARC Phase Shift Resistivity 28 inch at 2 MHz (P28H) 0.2 (OHMM) 2000	<u>Bulk Density, Bottom (ROBB)</u> 1.95 (G/C3) 2.95	
<u>Ultrasonic Caliper Average (UCAV)</u> 6 (IN) 16	Collar Rotational Speed (CRPM) (RPM) 0 400	ARC Phase Shift Resistivity 16 inch at 2 MHz (P16H) 0.2 (OHMM) 2000	Best Thermal Neutron Porosity, Average (BPHI) 0.45 (V/V) -0.15

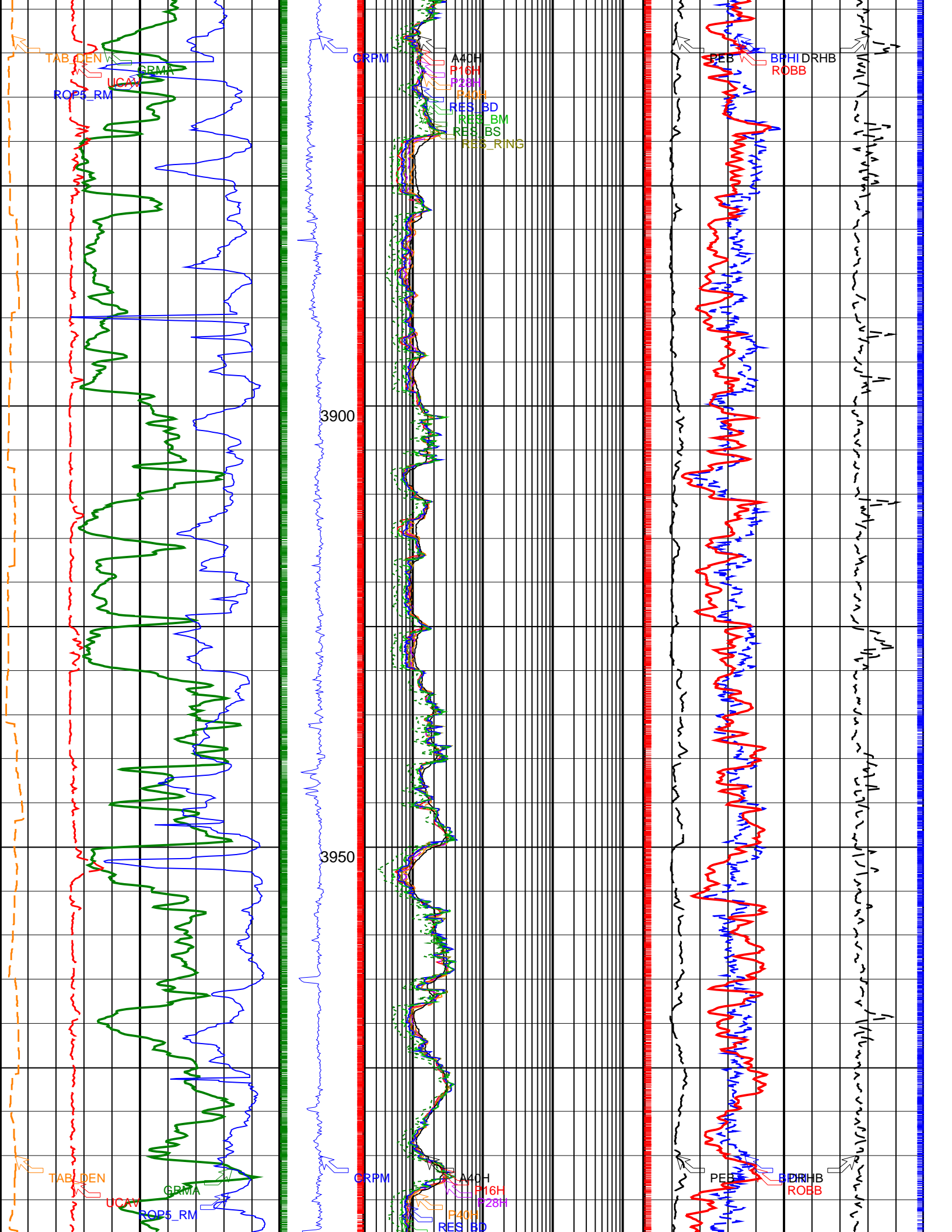


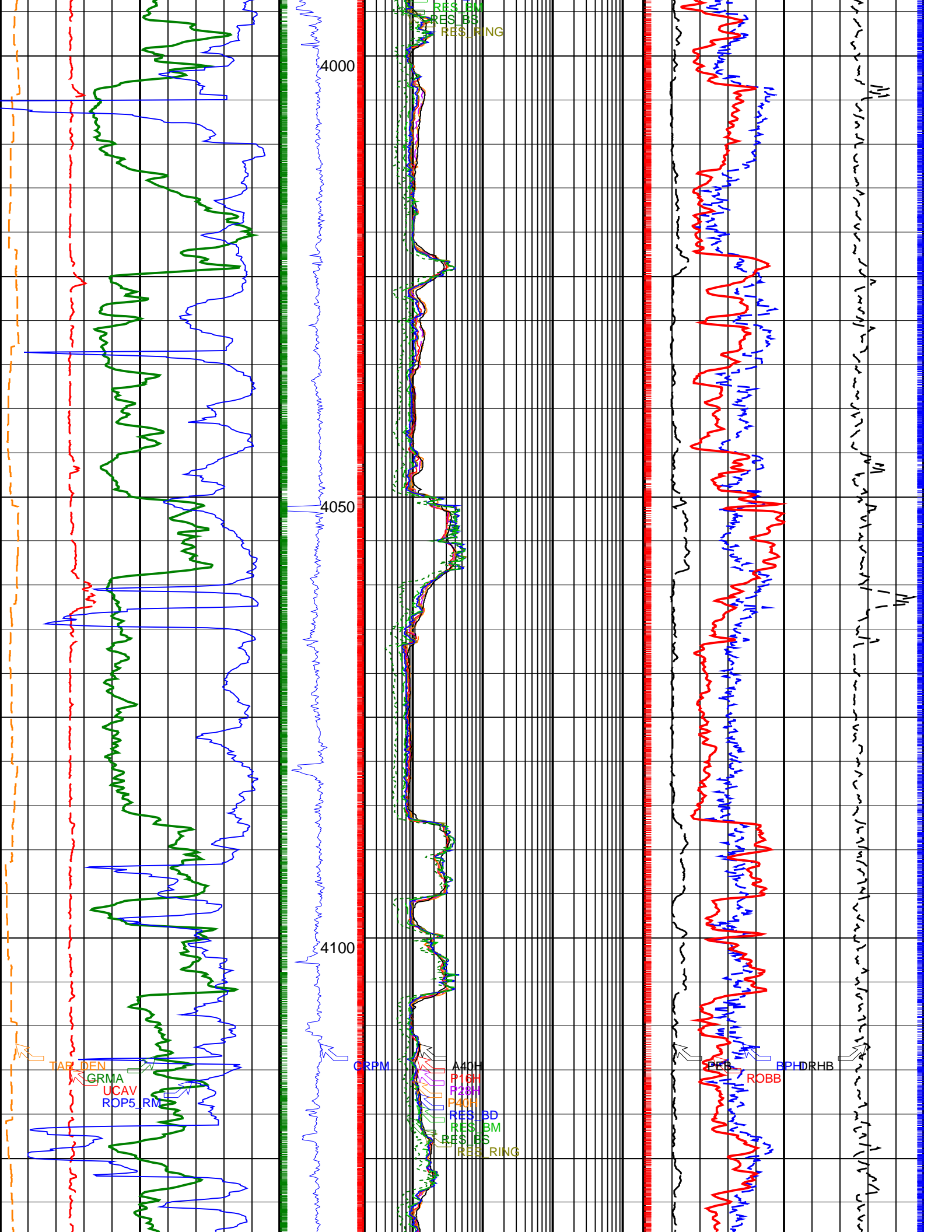












4000

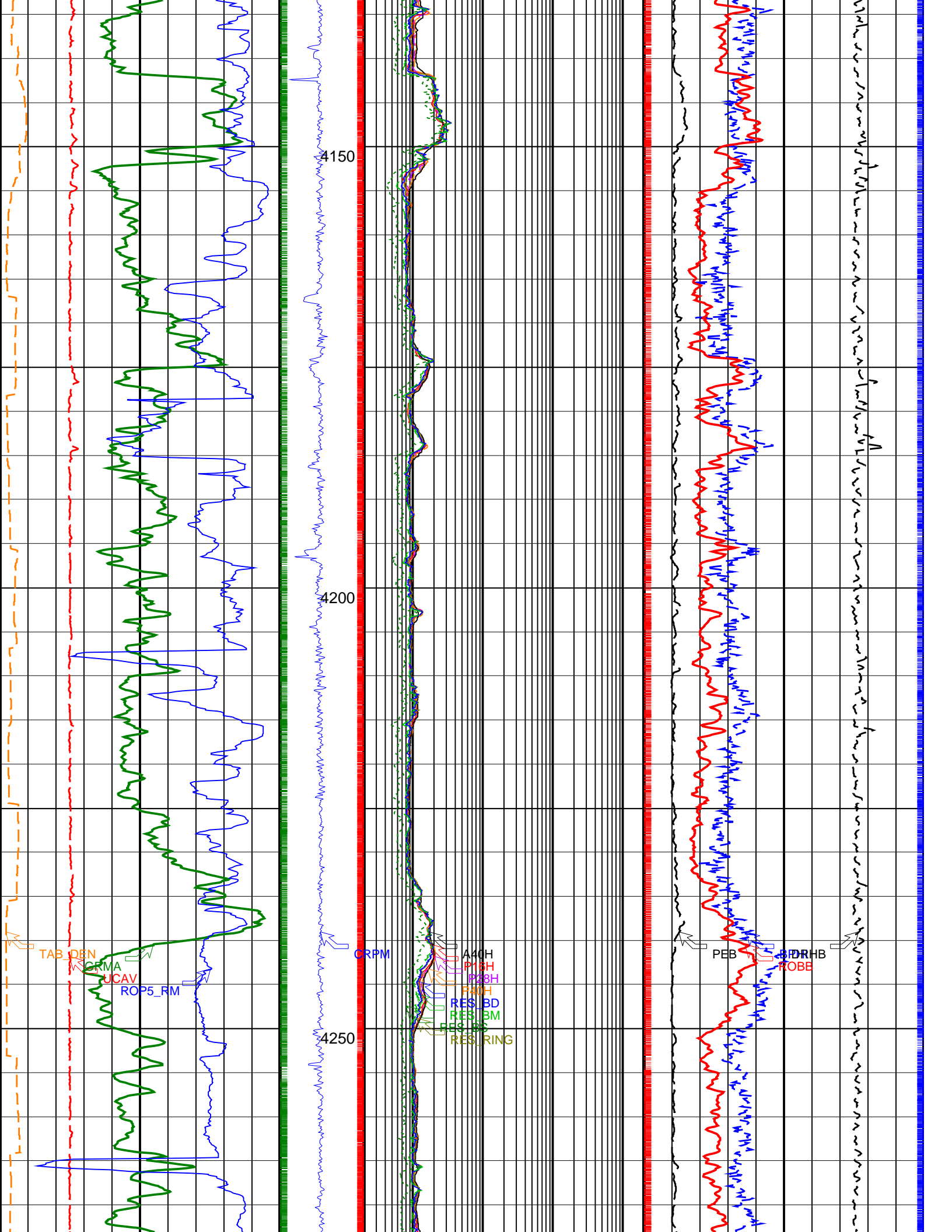
4050

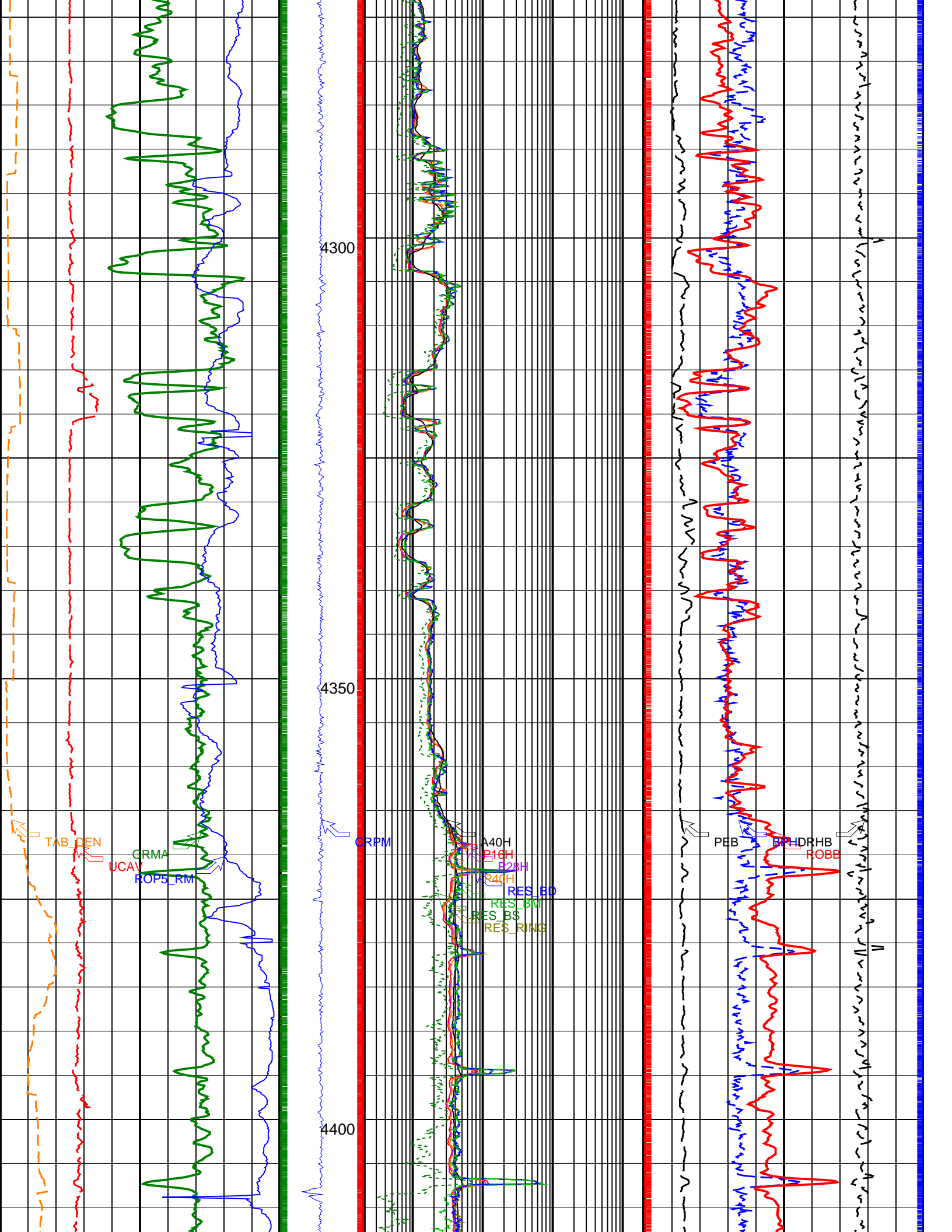
4100

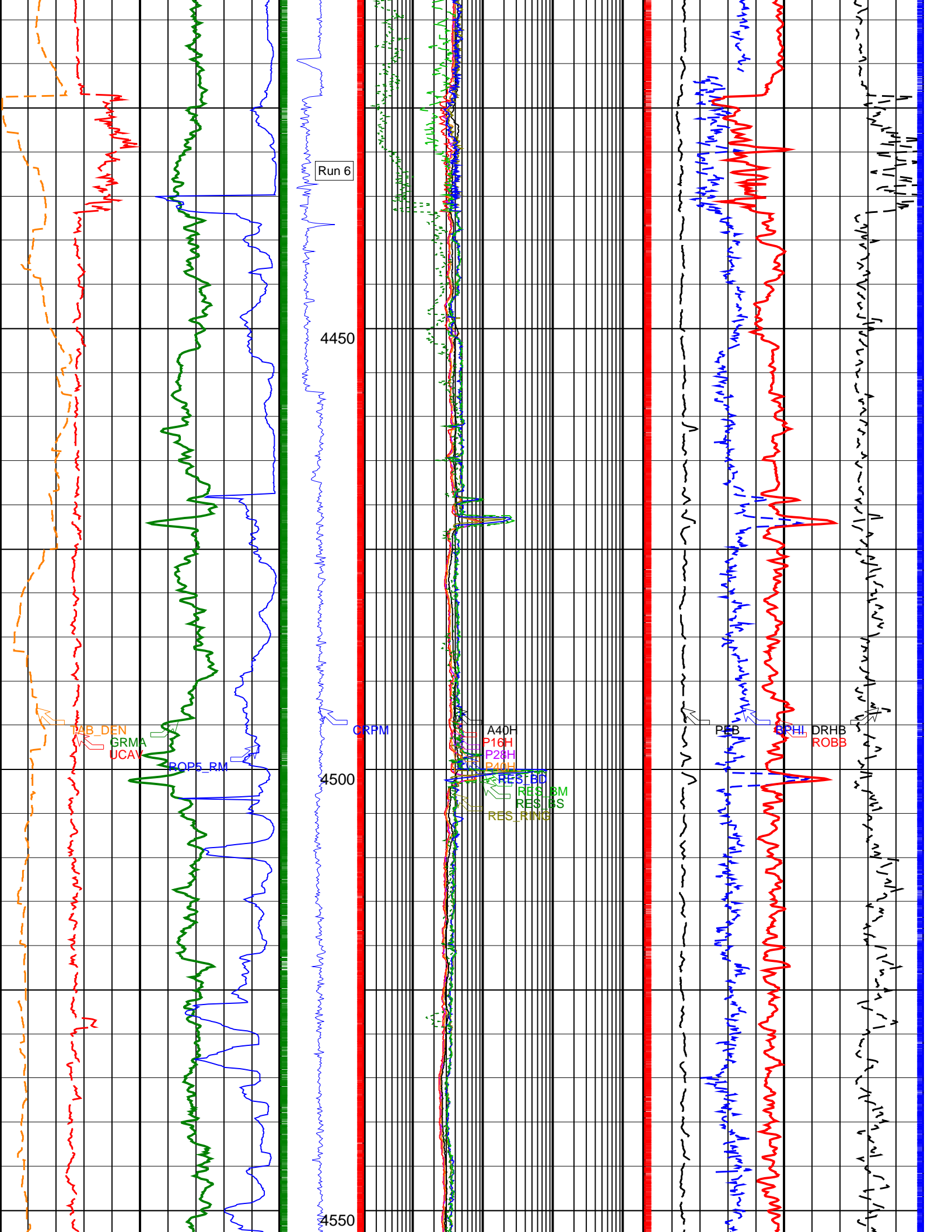
TAP DEN
GRMA
UCAV
ROP5 RM

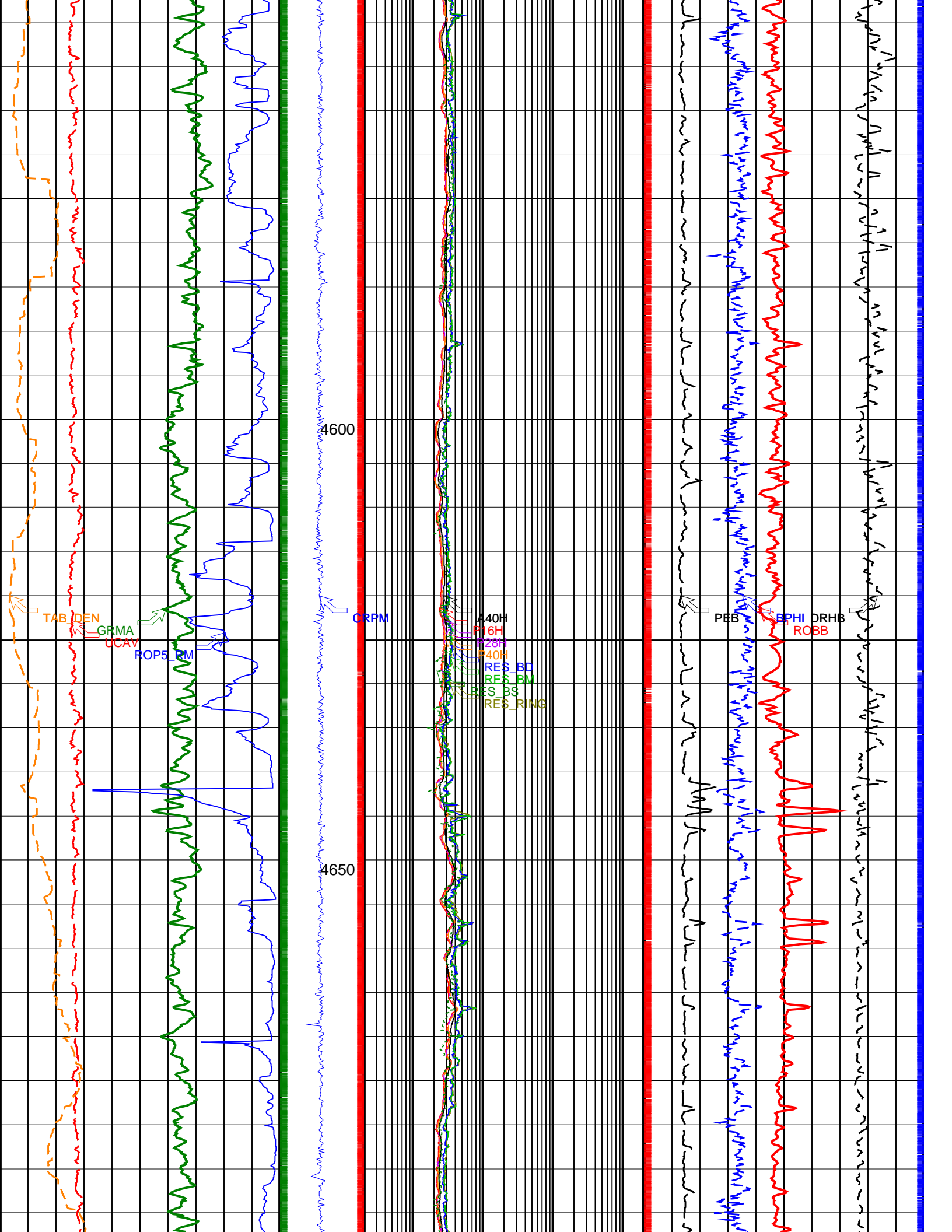
GRPM
A40H
P1
P2
P3
P4
P5
P6
P7
P8
P9
P10
P11
P12
P13
P14
P15
P16
P17
P18
P19
P20
P21
P22
P23
P24
P25
P26
P27
P28
P29
P30
P31
P32
P33
P34
P35
P36
P37
P38
P39
P40
P41
P42
P43
P44
P45
P46
P47
P48
P49
P50
P51
P52
P53
P54
P55
P56
P57
P58
P59
P60
P61
P62
P63
P64
P65
P66
P67
P68
P69
P70
P71
P72
P73
P74
P75
P76
P77
P78
P79
P80
P81
P82
P83
P84
P85
P86
P87
P88
P89
P90
P91
P92
P93
P94
P95
P96
P97
P98
P99
P100

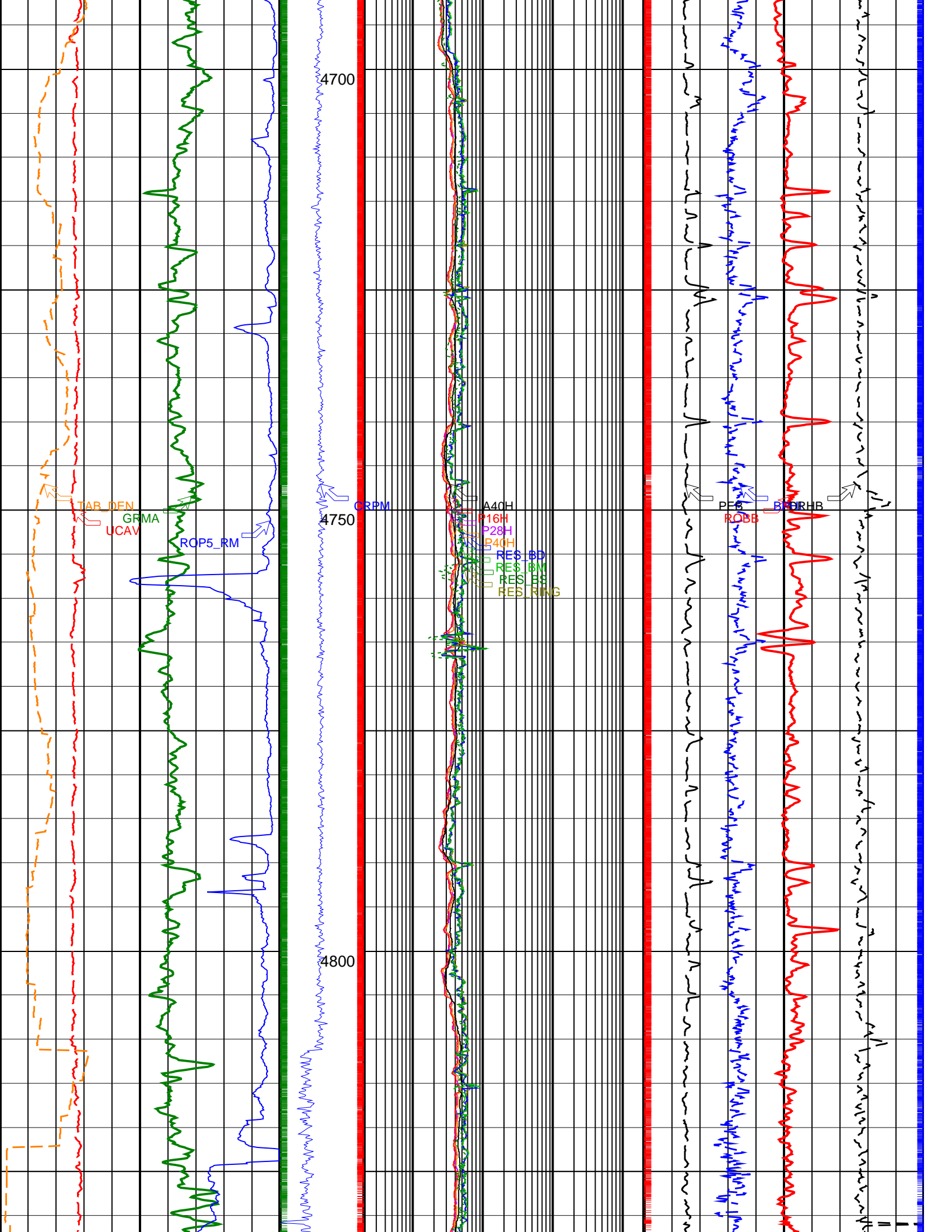
PHDRHB
ROBB

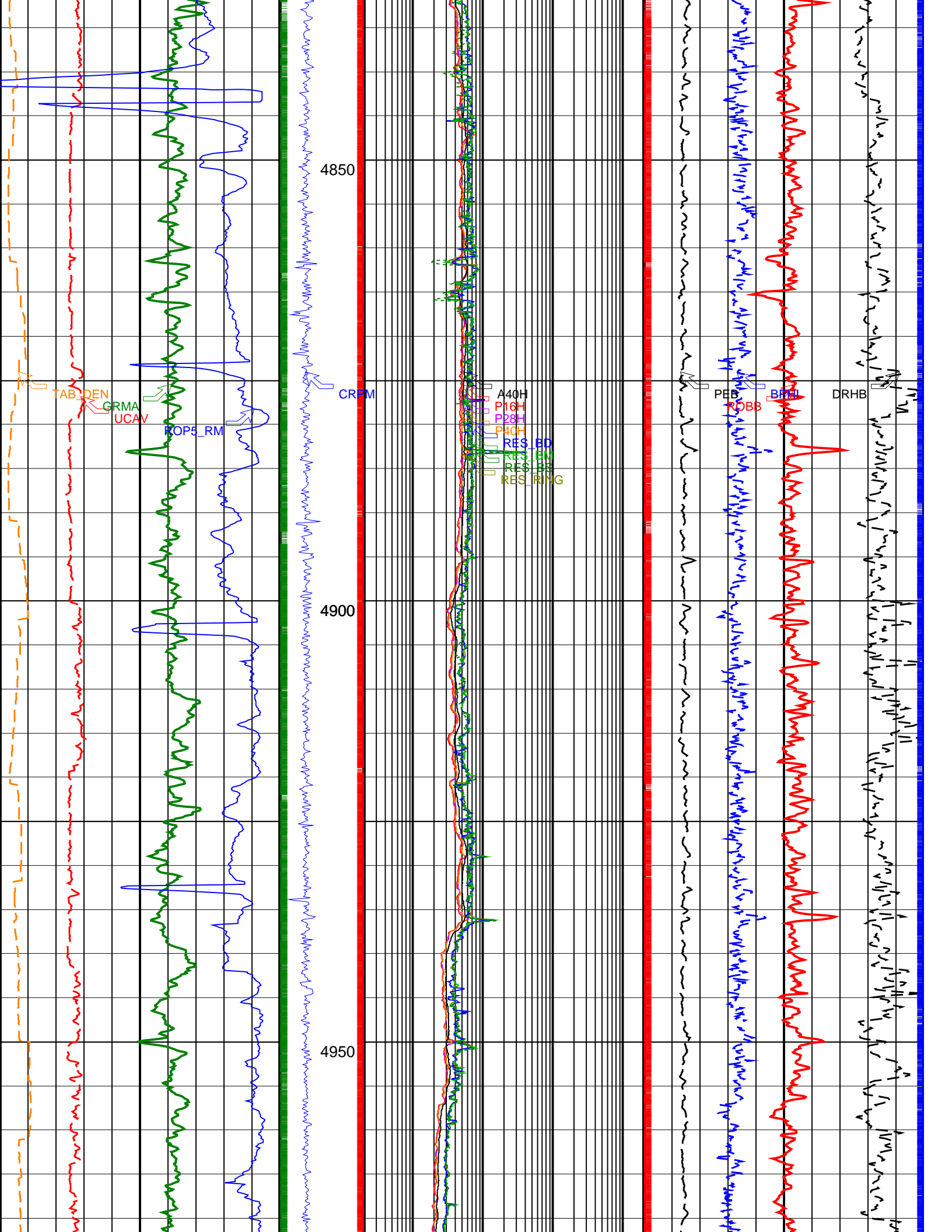


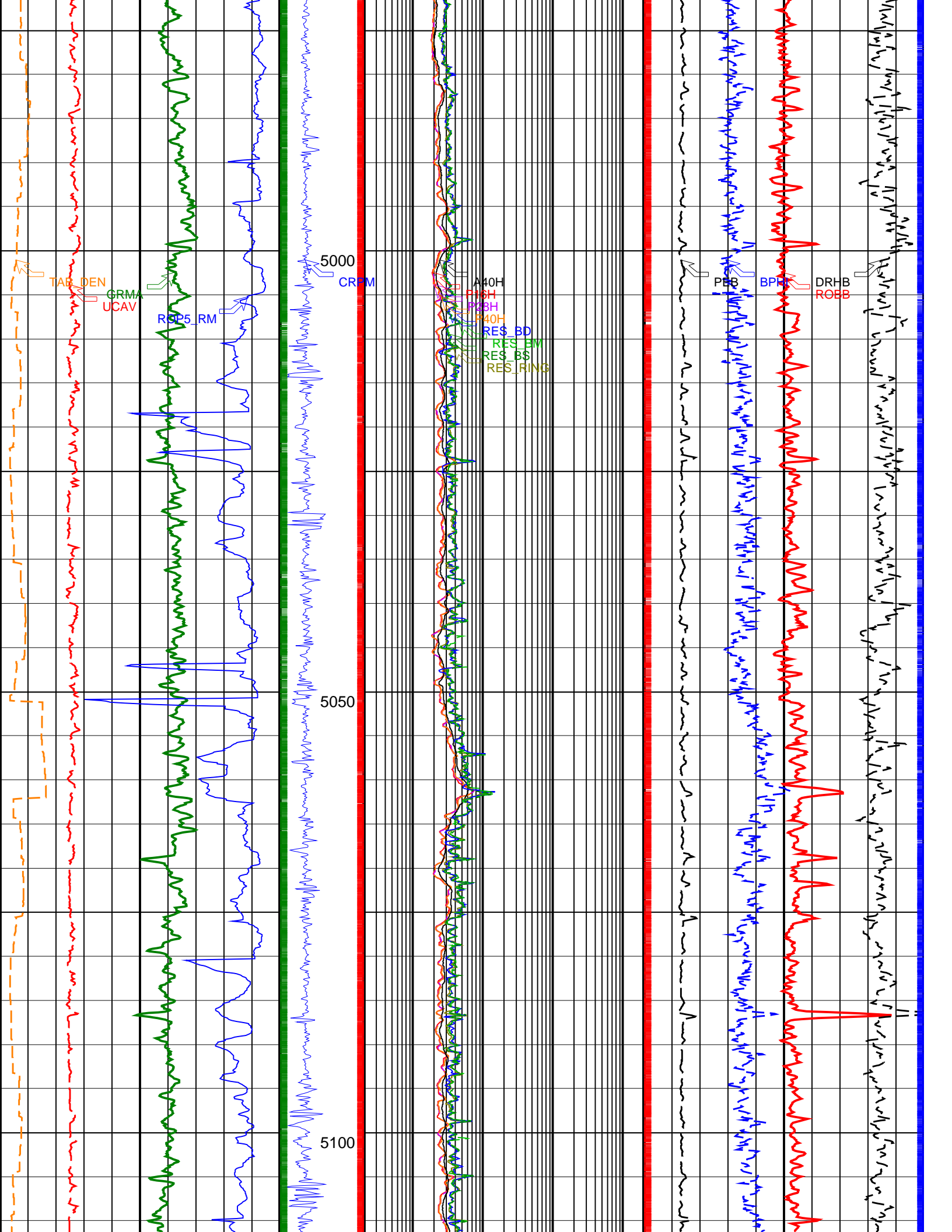


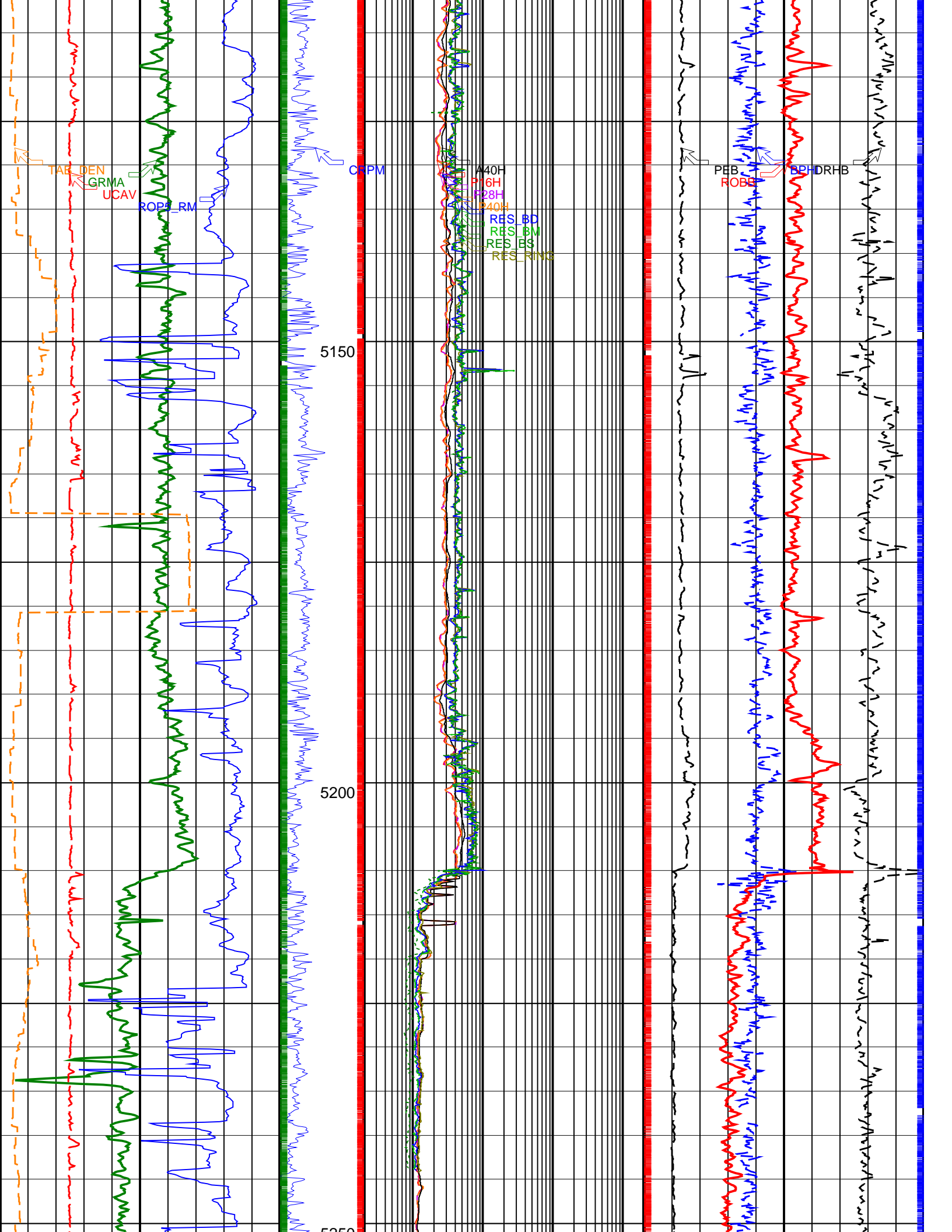












CRPM

5150

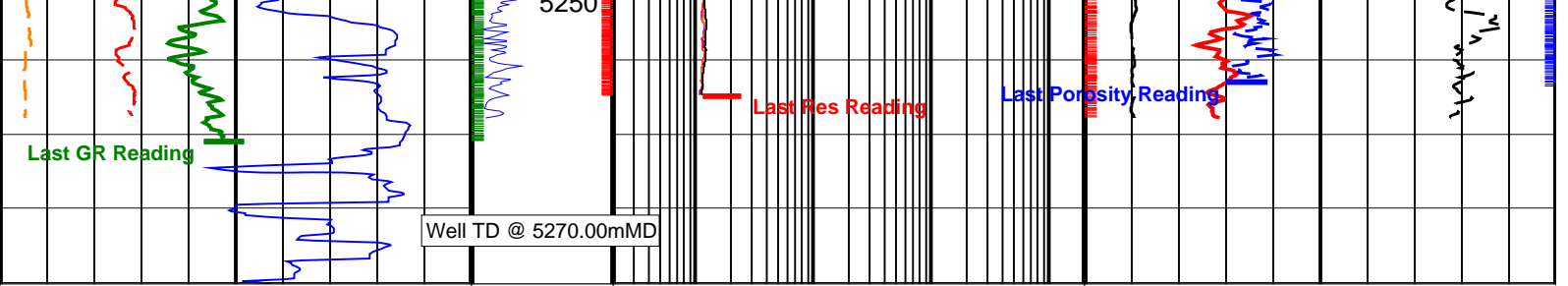
5200

5250

A40H
P6H
P28H
P40H
RES BD
RES BM
RES ES
RES L
RES MING

PEB
ROBB
PH
DRHB

TAB
DEN
GRMA
UCAV
ROB
LRM



Well TD @ 5270.00mMD

<p>Ultrasonic Caliper Average (UCAV) 6 (IN) 16</p>	<p>Collar Rotational Speed (CRPM) (RPM) 0 400</p>	<p>ARC Phase Shift Resistivity 16 inch at 2 MHz (P16H) 0.2 (OHMM) 2000</p>	<p>Best Thermal Neutron Porosity, Average (BPHI) 0.45 (V/V) -0.15</p>
<p>Gamma Ray, Average (GRMA) 0 (GAPI) 200</p>		<p>ARC Phase Shift Resistivity 28 inch at 2 MHz (P28H) 0.2 (OHMM) 2000</p>	<p>Bulk Density, Bottom (ROBB) 1.95 (G/C3) 2.95</p>
<p>Rate of Penetration, Averaged over Last 5ft (ROP5_RM) 200 (M/HR) 0</p>		<p>ARC Phase Shift Resistivity 40 inch at 2 MHz (P40H) 0.2 (OHMM) 2000</p>	<p>Photoelectric Factor, Bottom (PEB) 0 (----) 10</p> <p>Bulk Density Correction, Bottom (DRHB) -0.25 (G/C3) 0.25</p>
<p>Time after BIT (between drilling and measurement) (TAB_DEN) 0 (HR) 10</p>		<p>ARC Attenuation Resistivity 40 inch at 2 MHz (A40H) 0.2 (OHMM) 2000</p>	
		<p>Ring Resistivity (RES_RING) 0.2 (OHMM) 2000</p>	
		<p>Deep Button Resistivity (RES_BD) 0.2 (OHMM) 2000</p>	
		<p>Medium Button Resistivity (RES_BM) 0.2 (OHMM) 2000</p>	
		<p>Shallow Button Resistivity (RES_BS) 0.2 (OHMM) 2000</p>	

PIP SUMMARY

+ Gamma Ray Samples

+ Resistivity Samples

Density Ticks, 0.1 ft +

Neutron Ticks, 0.1 ft +