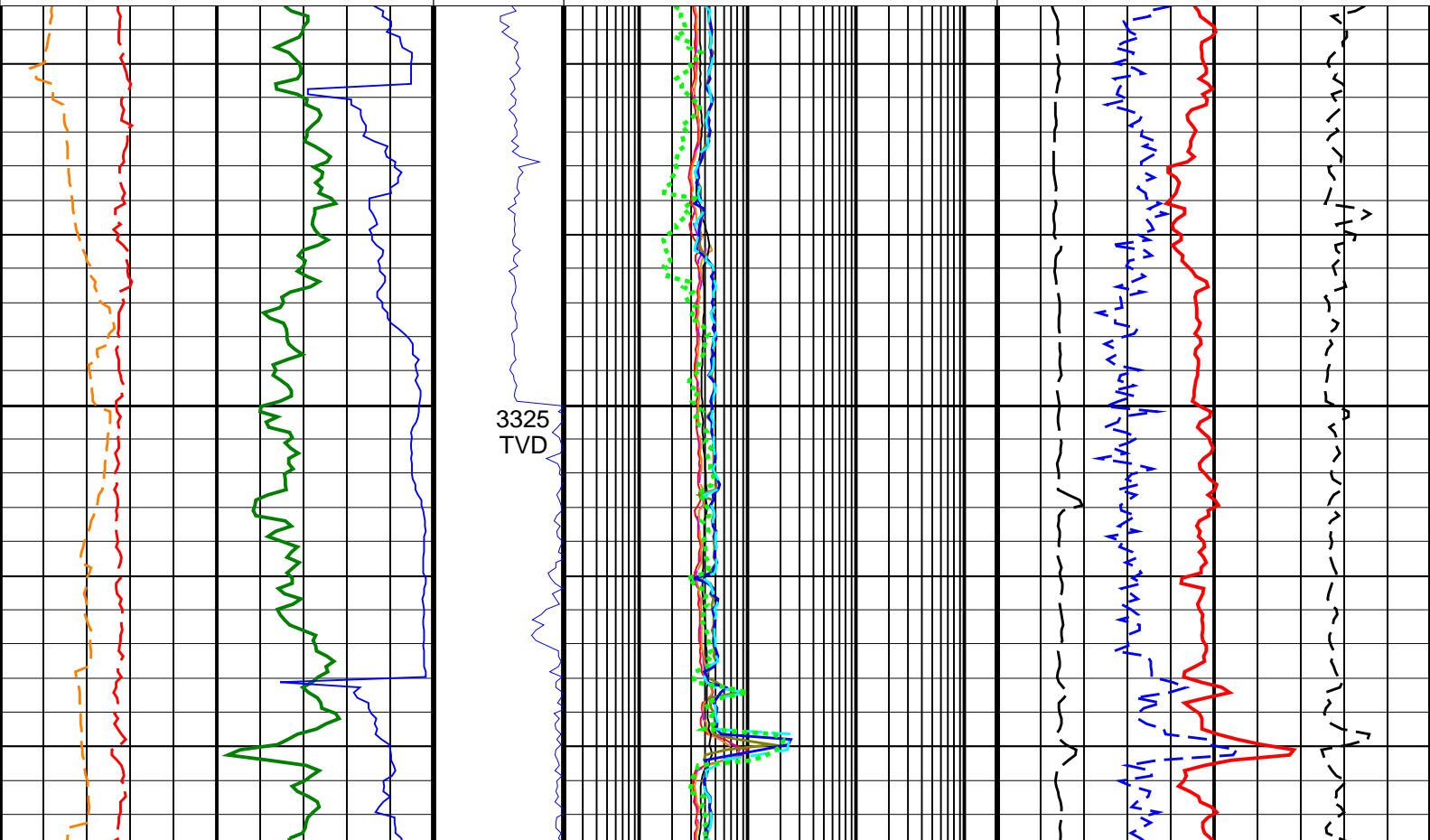
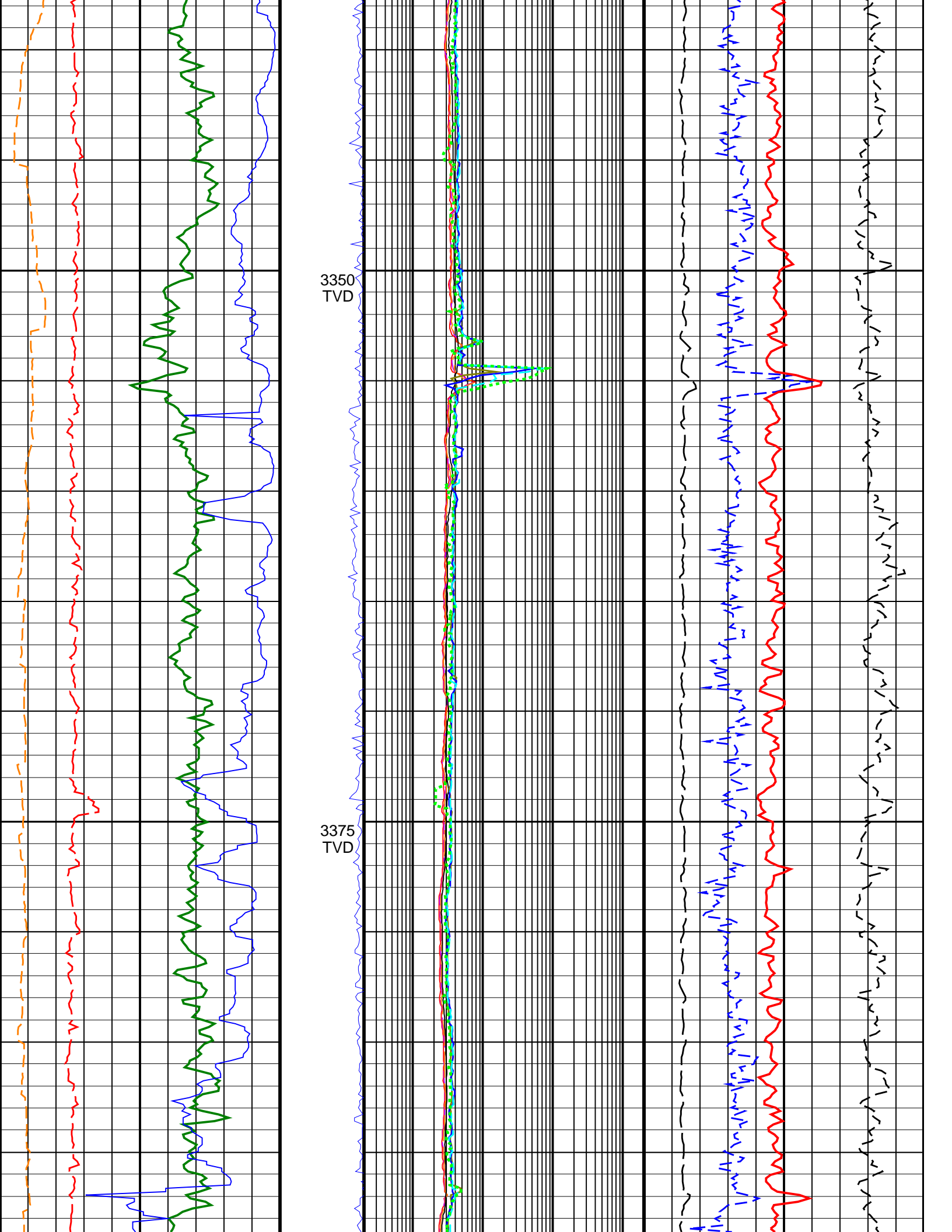


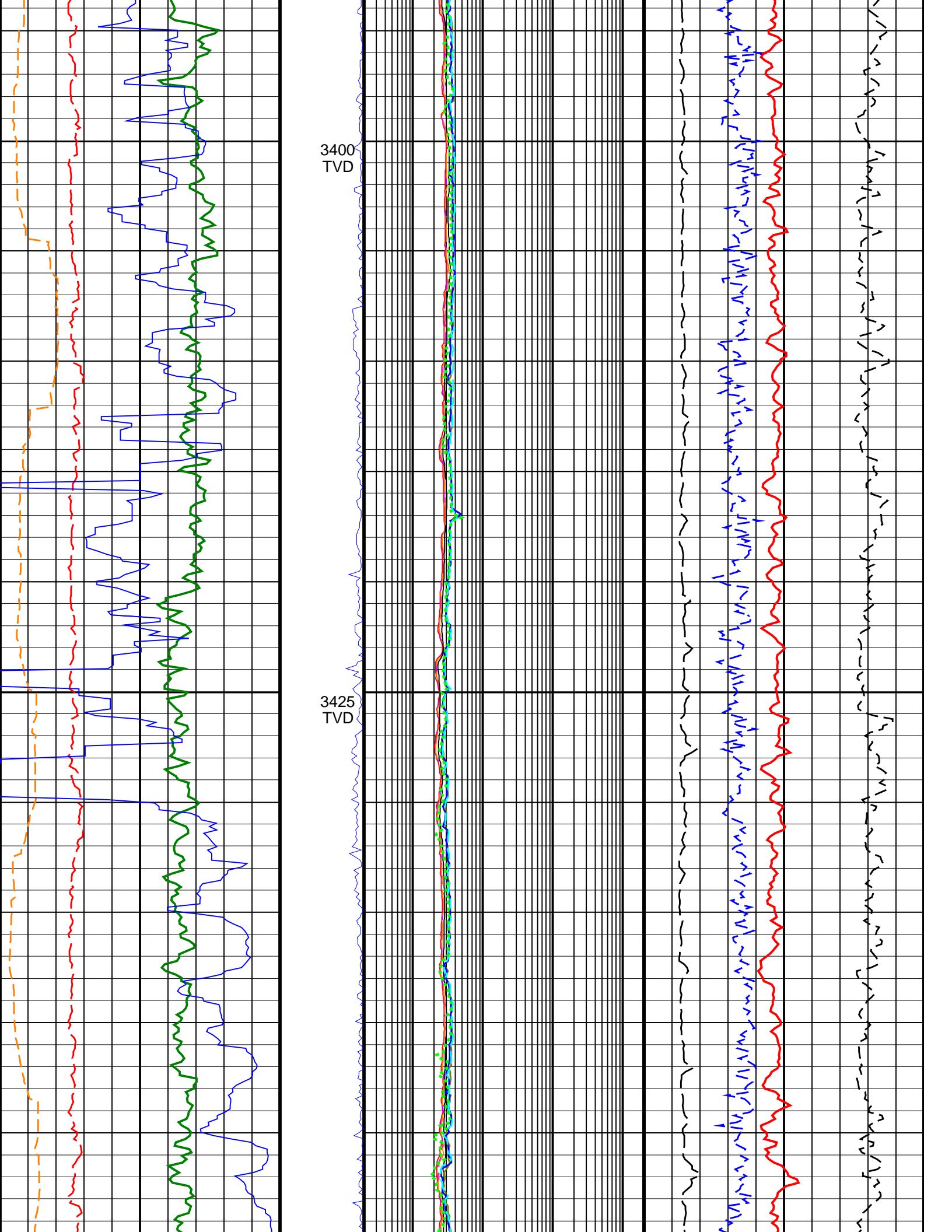
# Elver-1\_EcoScope\_GeoVISION Service RM 200TVD

Format: Elver-1\_EcoScope\_GVR\_200TVD      Vertical Scale: 1:200      Graphics File Created: 12-Jan-2009 22:30

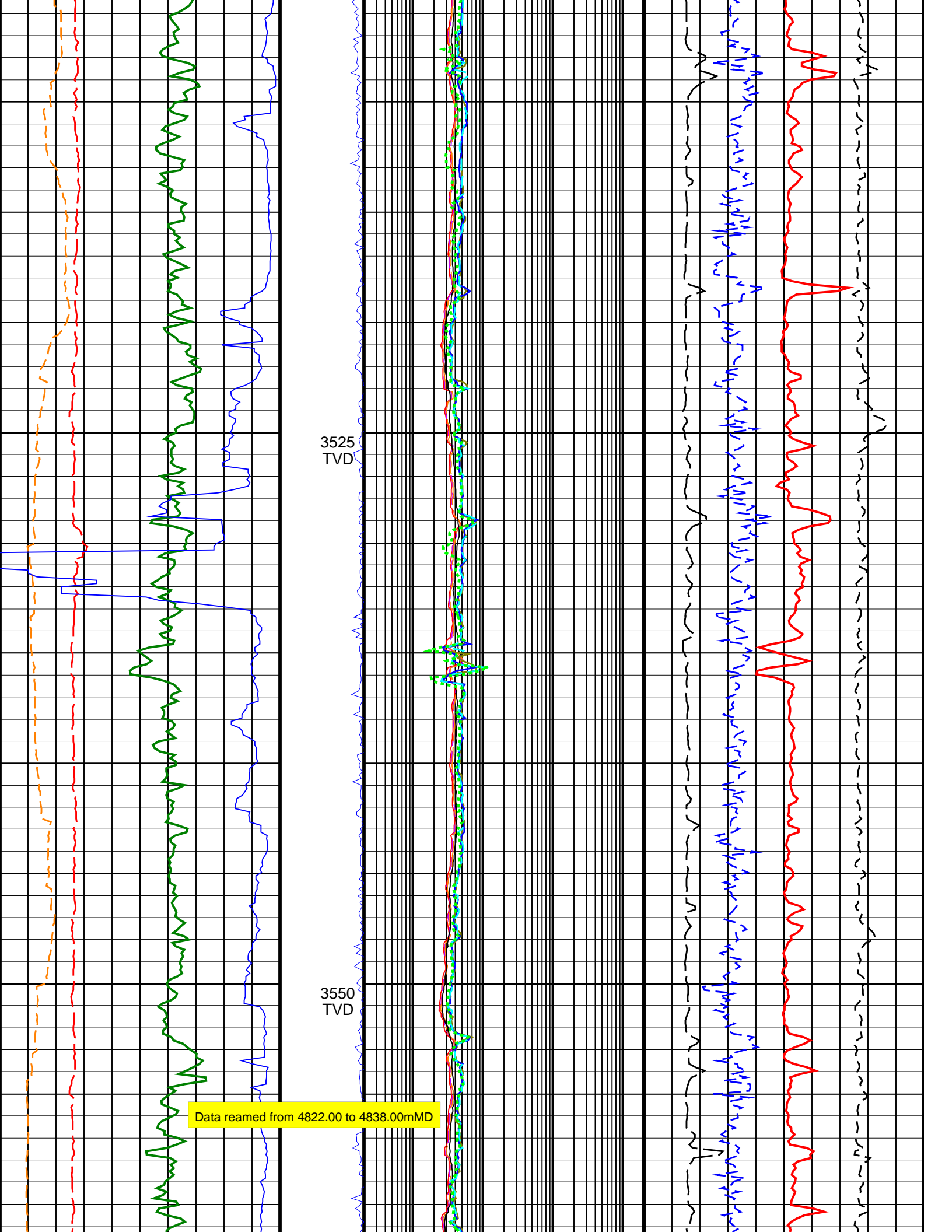
	<b>ARC Attenuation Resistivity 40 inch at 2 MHz (A40H)</b> 0.2 (OHMM)      2000	
	<b>Medium Button Resistivity (RES_BM)</b> 0.2 (OHMM)      2000	
	<b>Deep Button Resistivity (RES_BD)</b> 0.2 (OHMM)      2000	
	<b>Ring Resistivity (RES_RING)</b> 0.2 (OHMM)      2000	
<b>Time after BIT (between drilling and measurement) (TAB_DEN)</b> 0 (HR)      10	<b>ARC Phase Shift Resistivity 40 inch at 2 MHz (P40H)</b> 0.2 (OHMM)      2000	
<b>Rate of Penetration, Averaged over Last 5ft (ROP5_RM)</b> 200 (M/HR)      0	<b>ARC Phase Shift Resistivity 28 inch at 2 MHz (P28H)</b> 0.2 (OHMM)      2000	<b>Photoelectric Factor, Bottom (PEB)</b> 0 (----) 10
<b>Gamma Ray, Average (GRMA)</b> 0 (GAPI)      200	<b>Shallow Button Resistivity (RES_BS)</b> 0.2 (OHMM)      2000	<b>Bulk Density Correction, Bottom (DRHB)</b> -0.25 (G/C3)      0.25
<b>Ultrasonic Caliper Average (UCAV)</b> 6 (IN)      16	<b>ARC Phase Shift Resistivity 16 inch at 2 MHz (P16H)</b> 0.2 (OHMM)      2000	<b>Bulk Density, Bottom (ROBB)</b> 1.95 (G/C3)      2.95
<b>Collar Rotational Speed (CRPM) (RPM)</b> 0      200	<b>Best Thermal Neutron Porosity, Average (BPHI)</b> 0.45 (V/V)      -0.15	







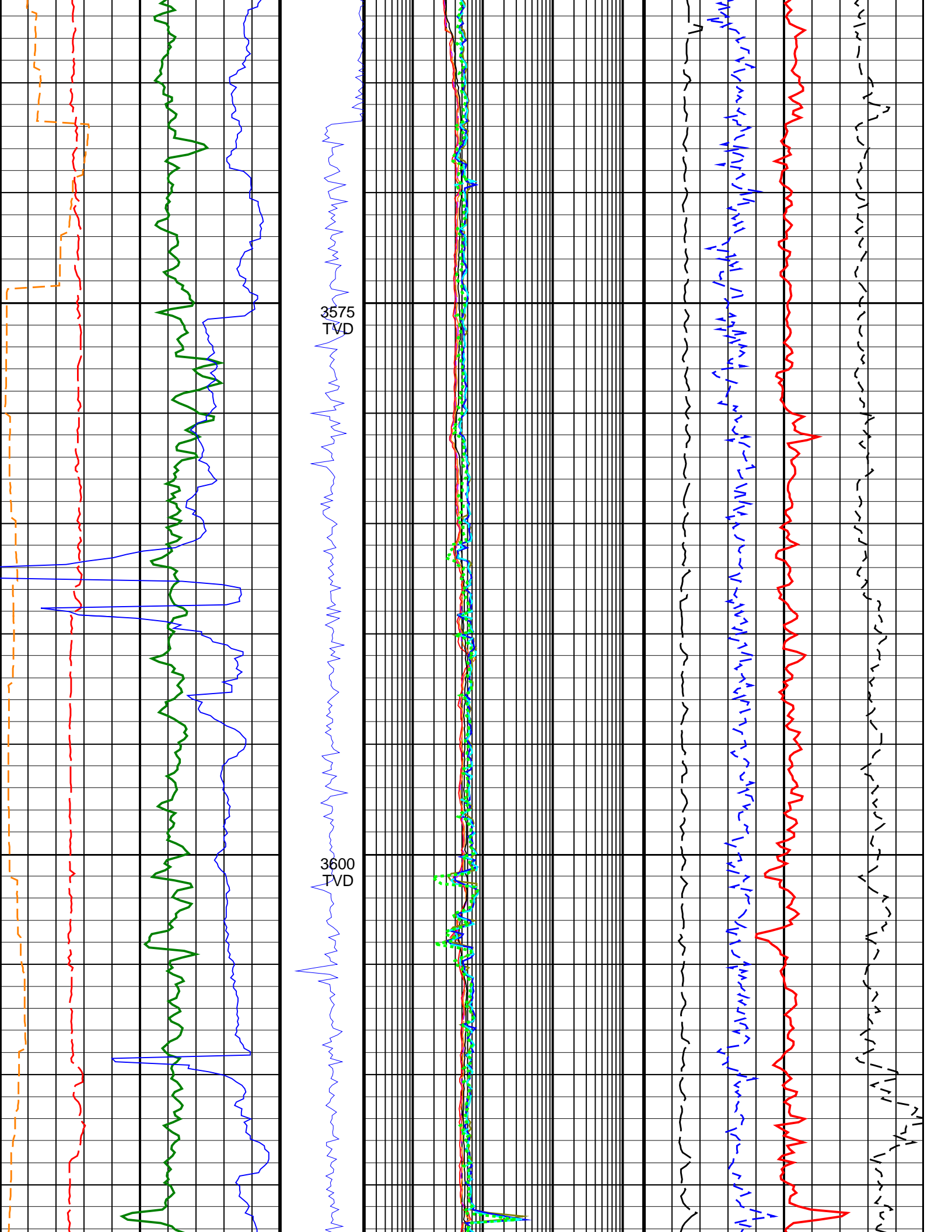


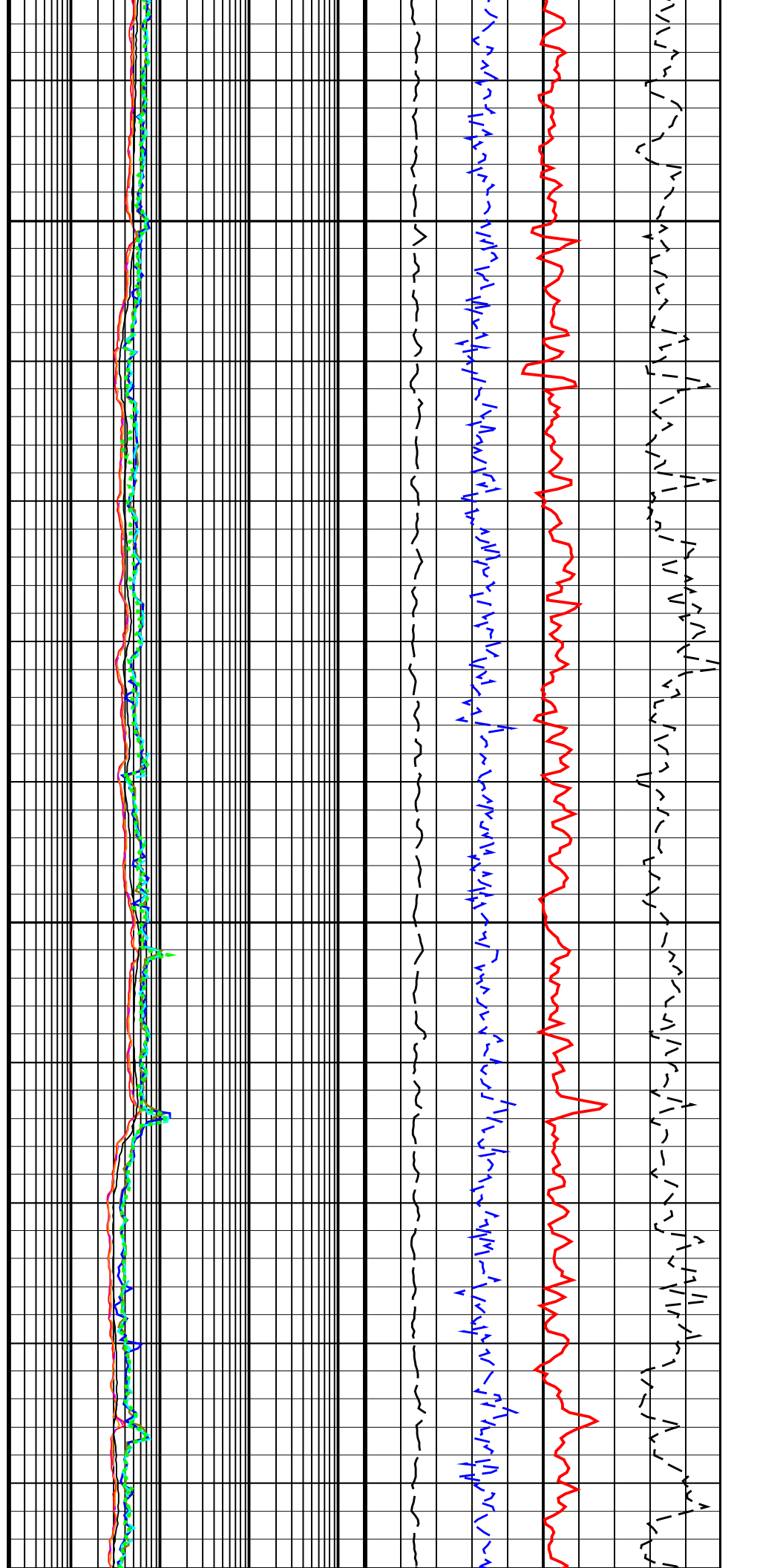
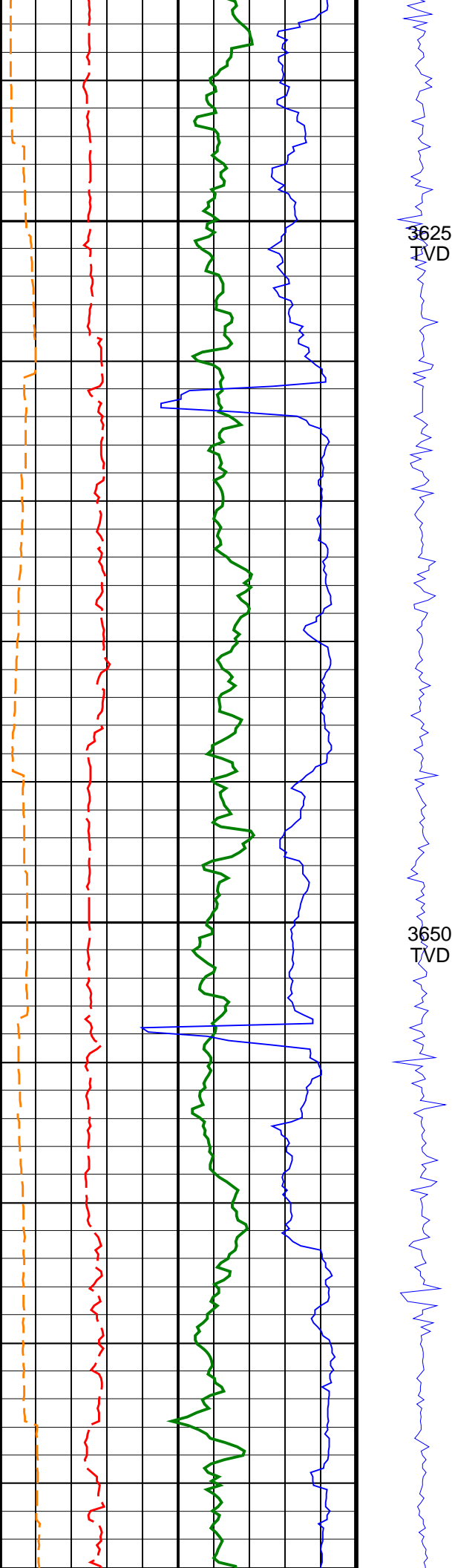


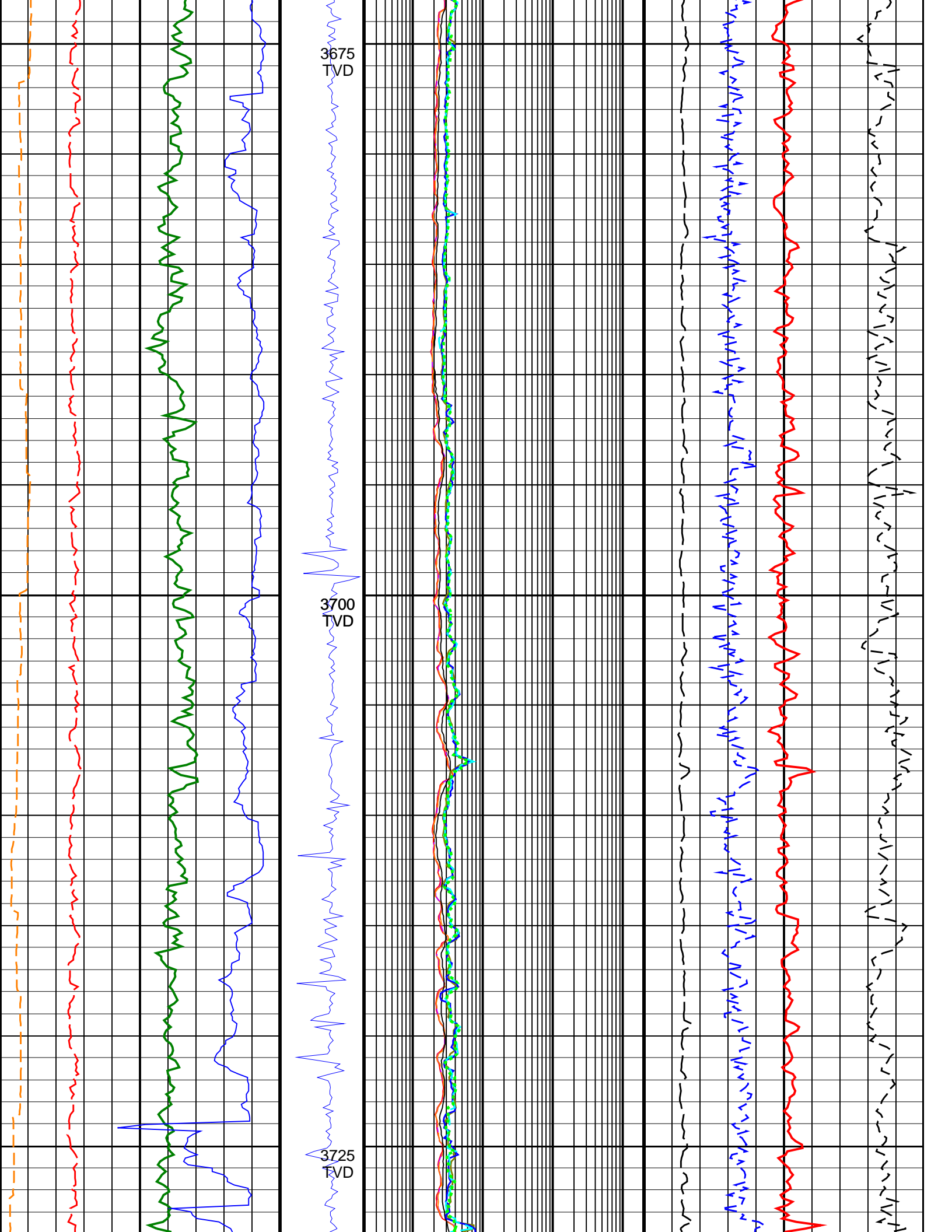
3525  
TVD

3550  
TVD

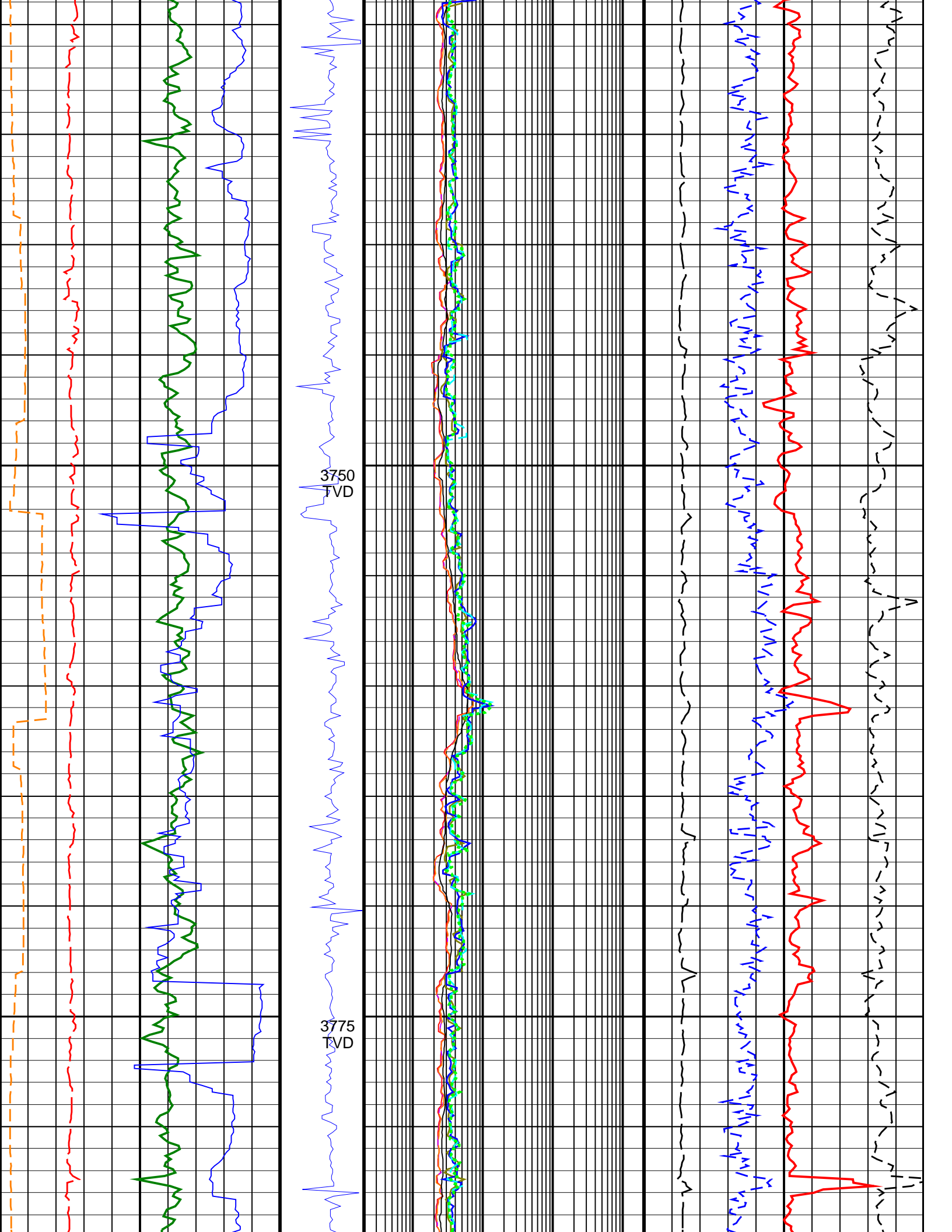
Data reamed from 4822.00 to 4838.00mMD

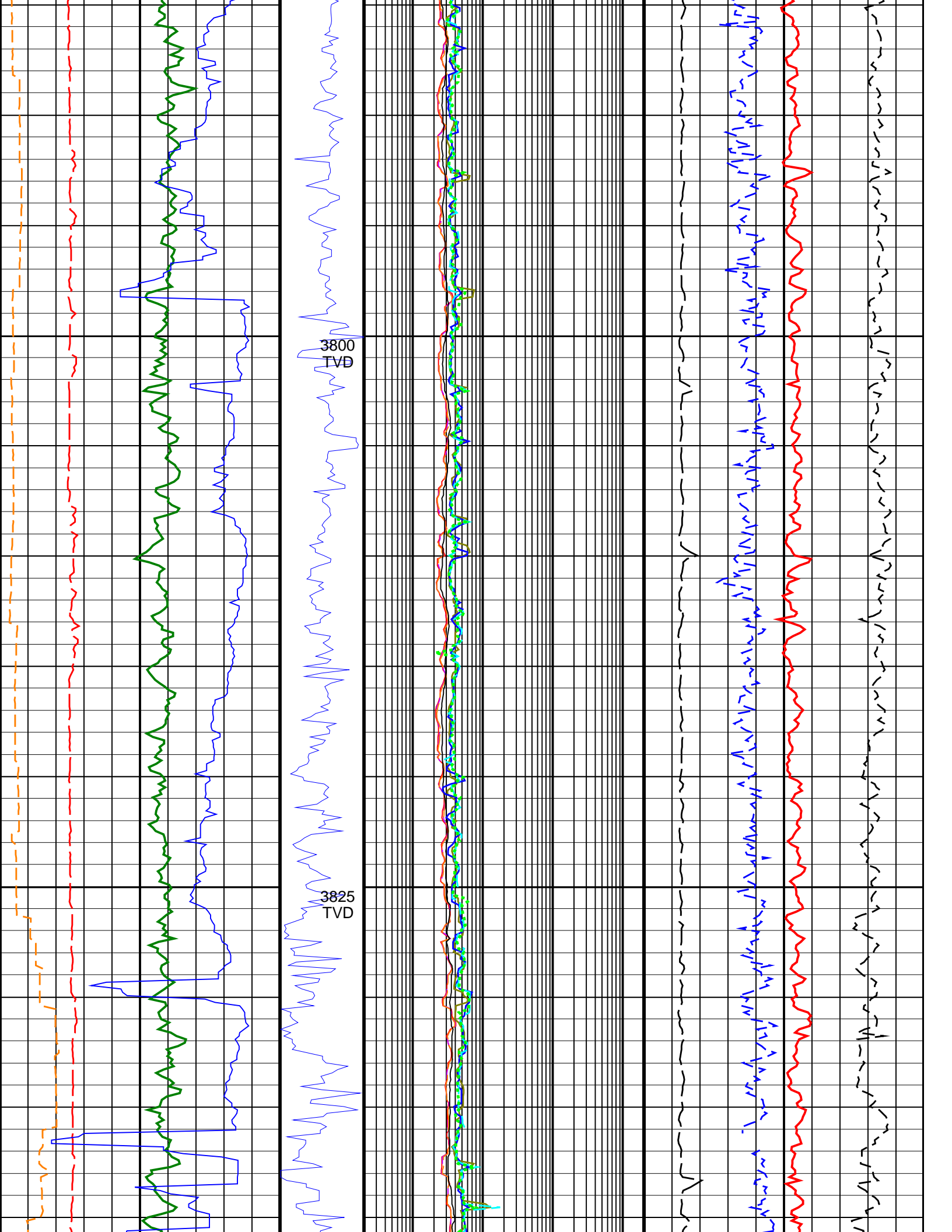


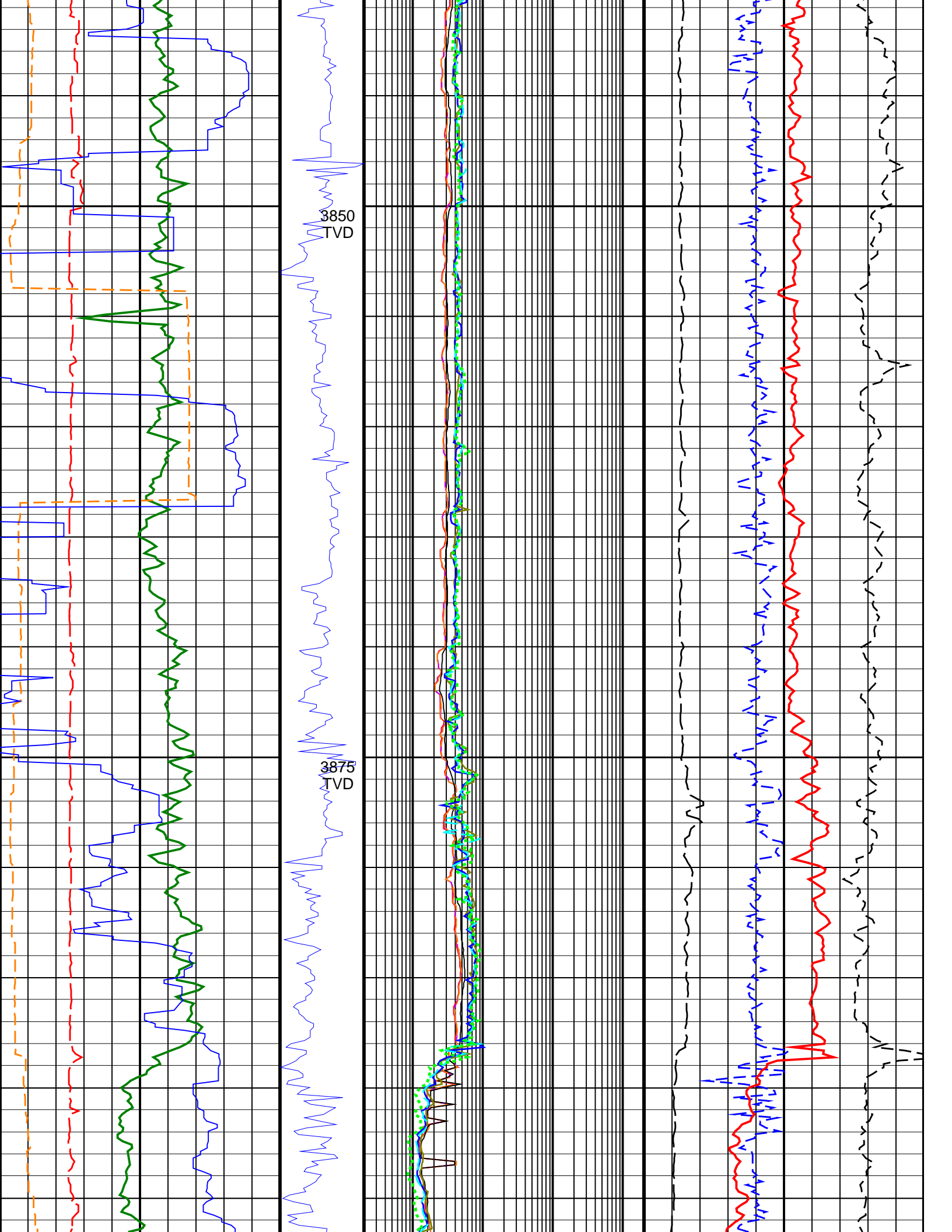


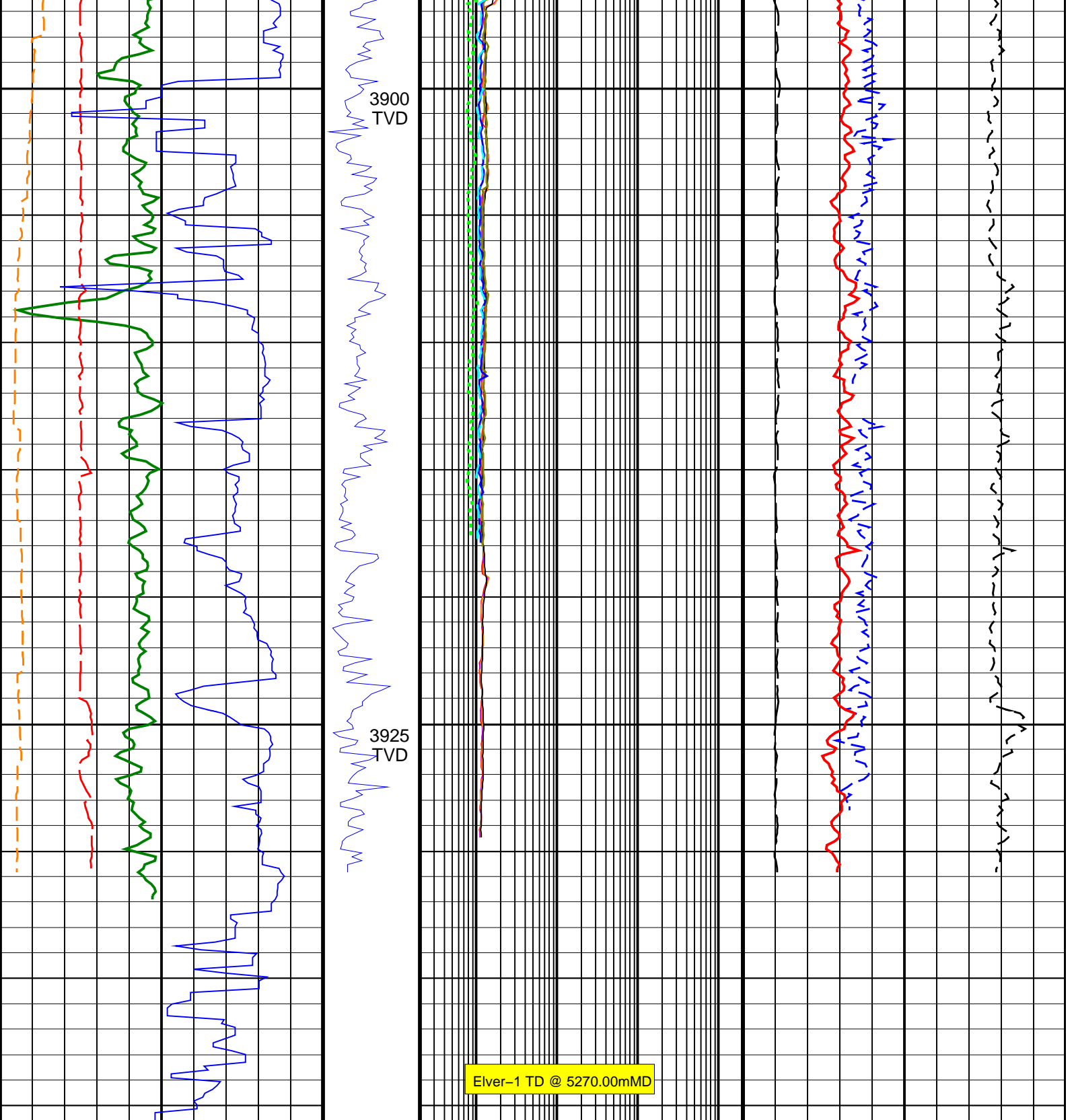












<p><b>Ultrasonic Caliper Average (UCAV)</b> 6 (IN) 16</p>	<p><b>Collar Rotational Speed (CRPM) (RPM)</b> 0 200</p>	<p><b>ARC Phase Shift Resistivity 16 inch at 2 MHz (P16H)</b> 0.2 (OHMM) 2000</p>	<p><b>Best Thermal Neutron Porosity, Average (BPHI)</b> 0.45 (V/V) -0.15</p>	
<p><b>Gamma Ray, Average (GRMA)</b> 0 (GAPI) 200</p>		<p><b>Shallow Button Resistivity (RES_BS)</b> 0.2 (OHMM) 2000</p>	<p><b>Bulk Density, Bottom (ROBB)</b> 1.95 (G/C3) 2.95</p>	
<p><b>Rate of Penetration, Averaged over Last 5ft (ROP5_RM)</b> 200 (M/HR) 0</p>		<p><b>ARC Phase Shift Resistivity 28 inch at 2 MHz (P28H)</b> 0.2 (OHMM) 2000</p>	<p><b>Photoelectric Factor, Bottom (PEB)</b> 0 (----) 10</p>	<p><b>Bulk Density Correction, Bottom (DRHB)</b> -0.25 (G/C3) 0.25</p>
<p><b>Time after BIT (between drilling and</b></p>		<p><b>ARC Phase Shift Resistivity 40 inch at 2</b></p>		

Time after BIT (between drilling and measurement) (TAB_DEN)	0	10
(HR)		

ARC Phase Shift Resistivity 40 inch at 2 MHz (P40H)		
0.2	(OHMM)	2000
Ring Resistivity (RES_RING)		
0.2	(OHMM)	2000
Deep Button Resistivity (RES_BD)		
0.2	(OHMM)	2000
Medium Button Resistivity (RES_BM)		
0.2	(OHMM)	2000
ARC Attenuation Resistivity 40 inch at 2 MHz (A40H)		
0.2	(OHMM)	2000

--	--	--