

Elver-1 EcoScope Service RT 200MD

Format: ECO-SON-GVR_200MD_RT

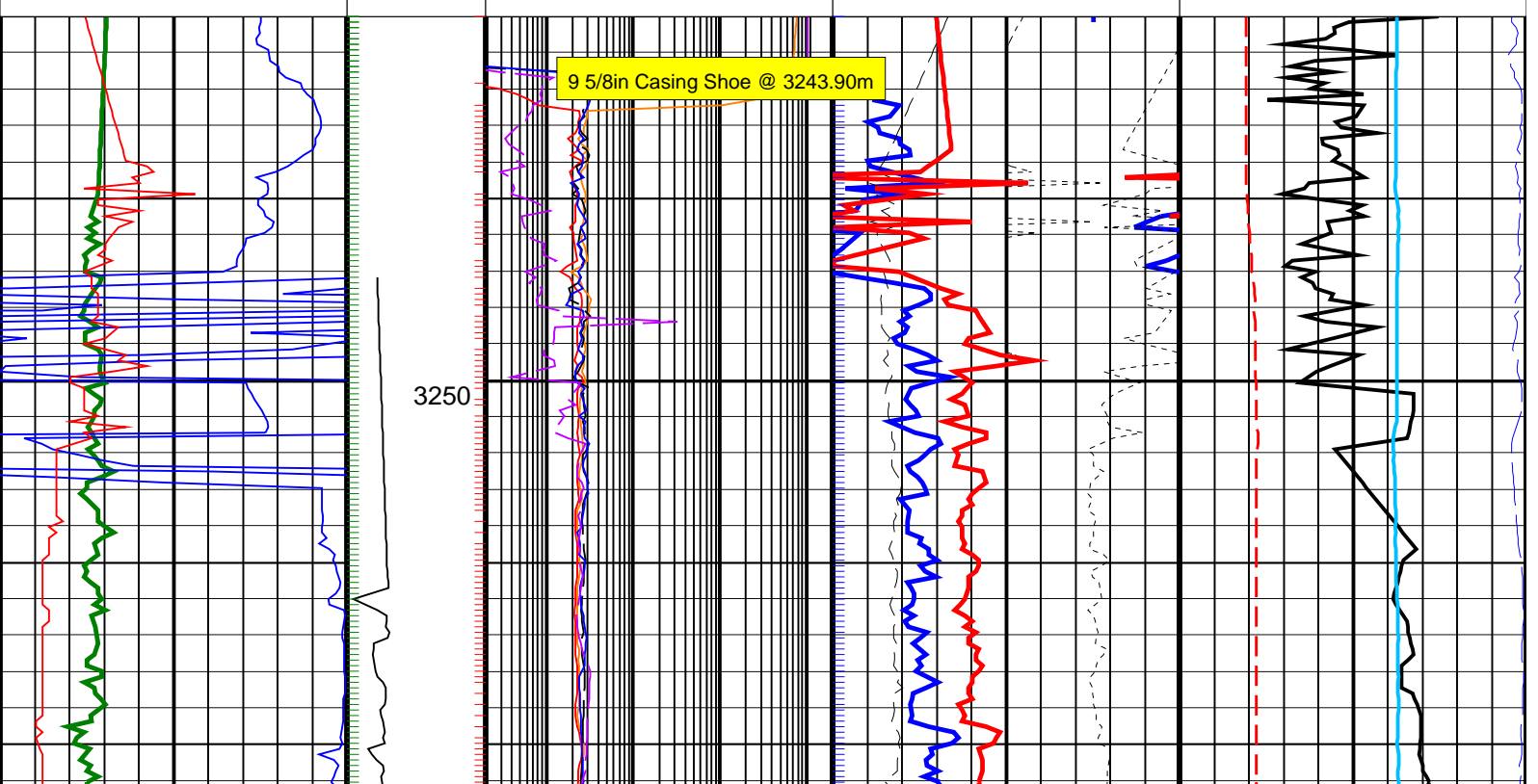
Vertical Scale: 1:200

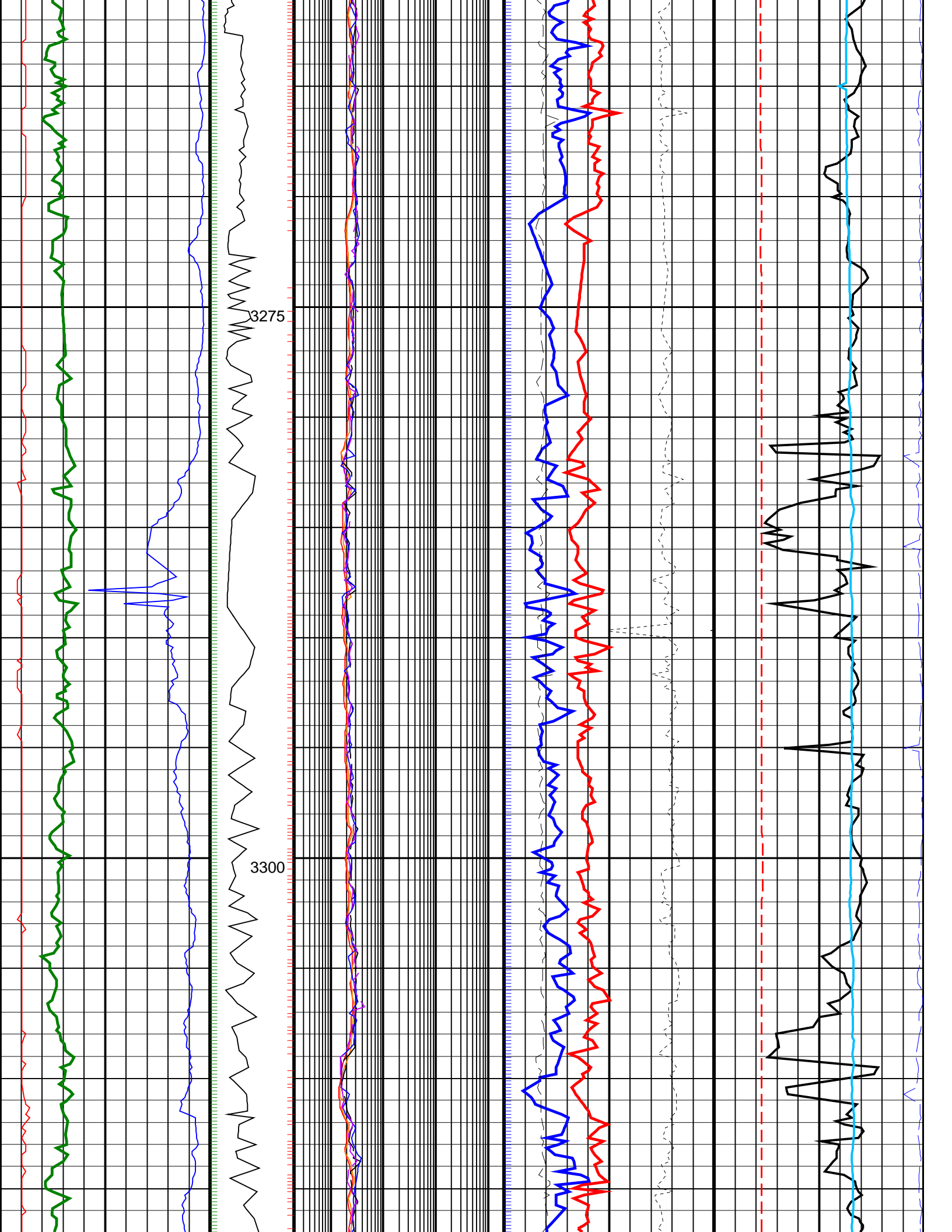
Graphics File Created: 04-Jan-2009 11:55

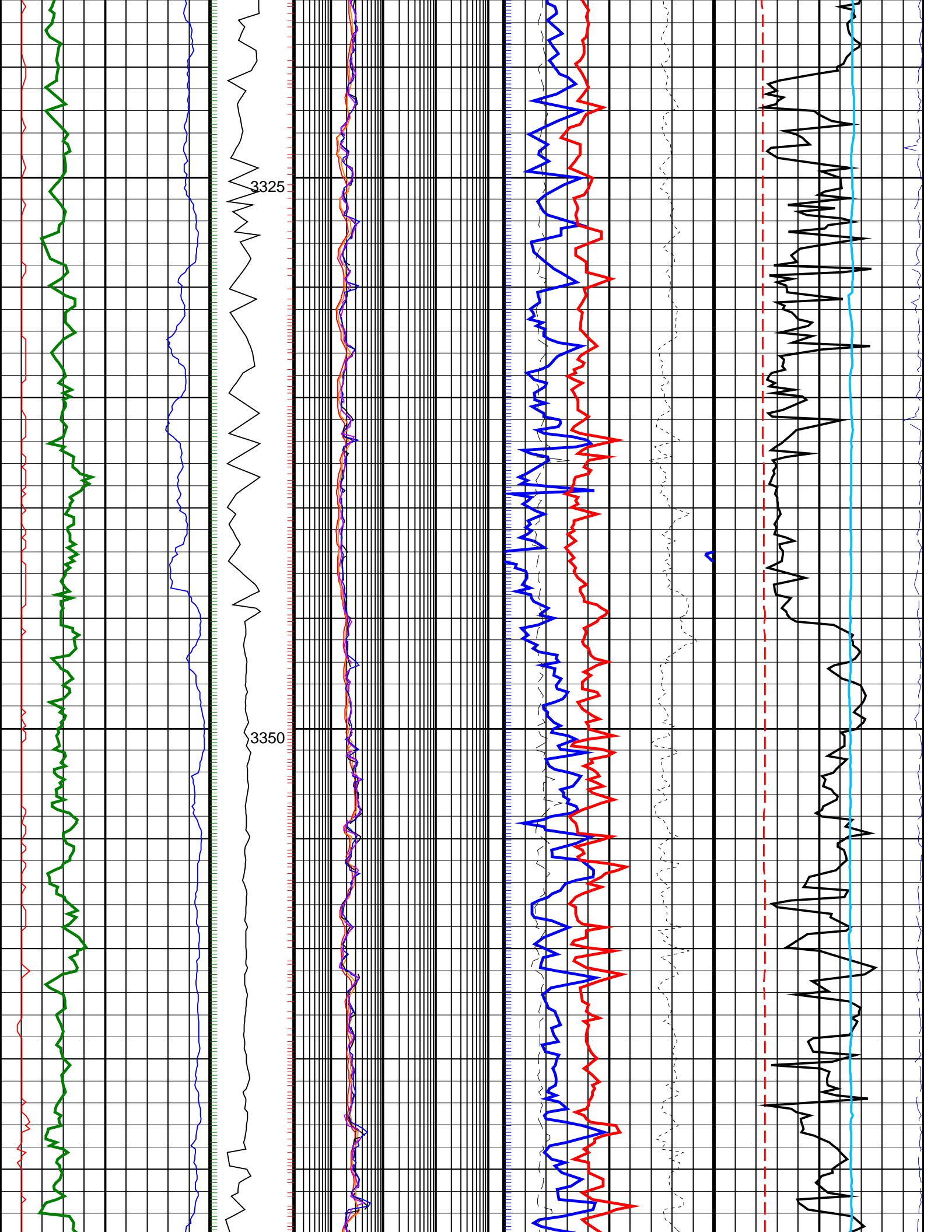
PIP SUMMARY

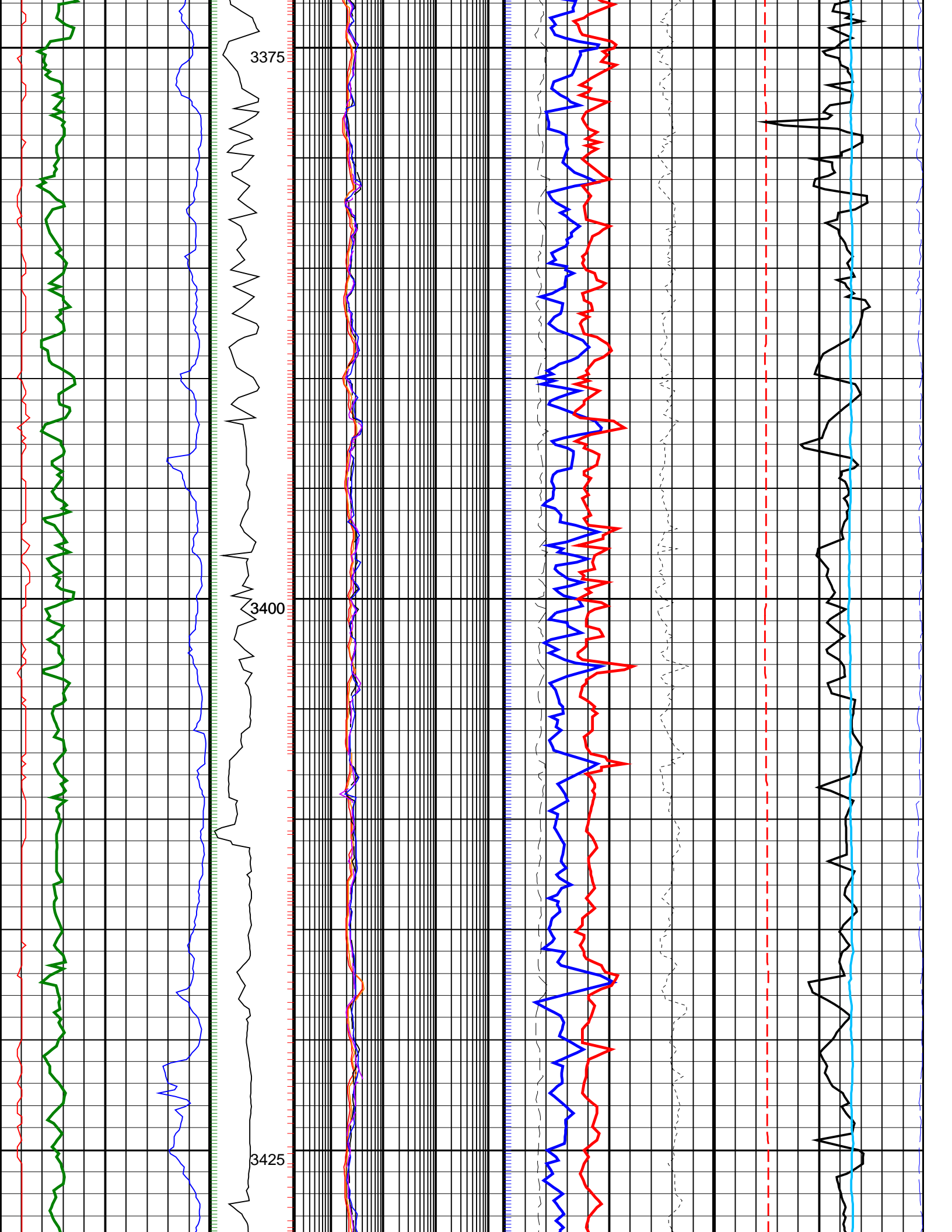
- ┆ Gamma Ray Samples
- Neutron Samples ┆
- ┆ Resisitivity Samples

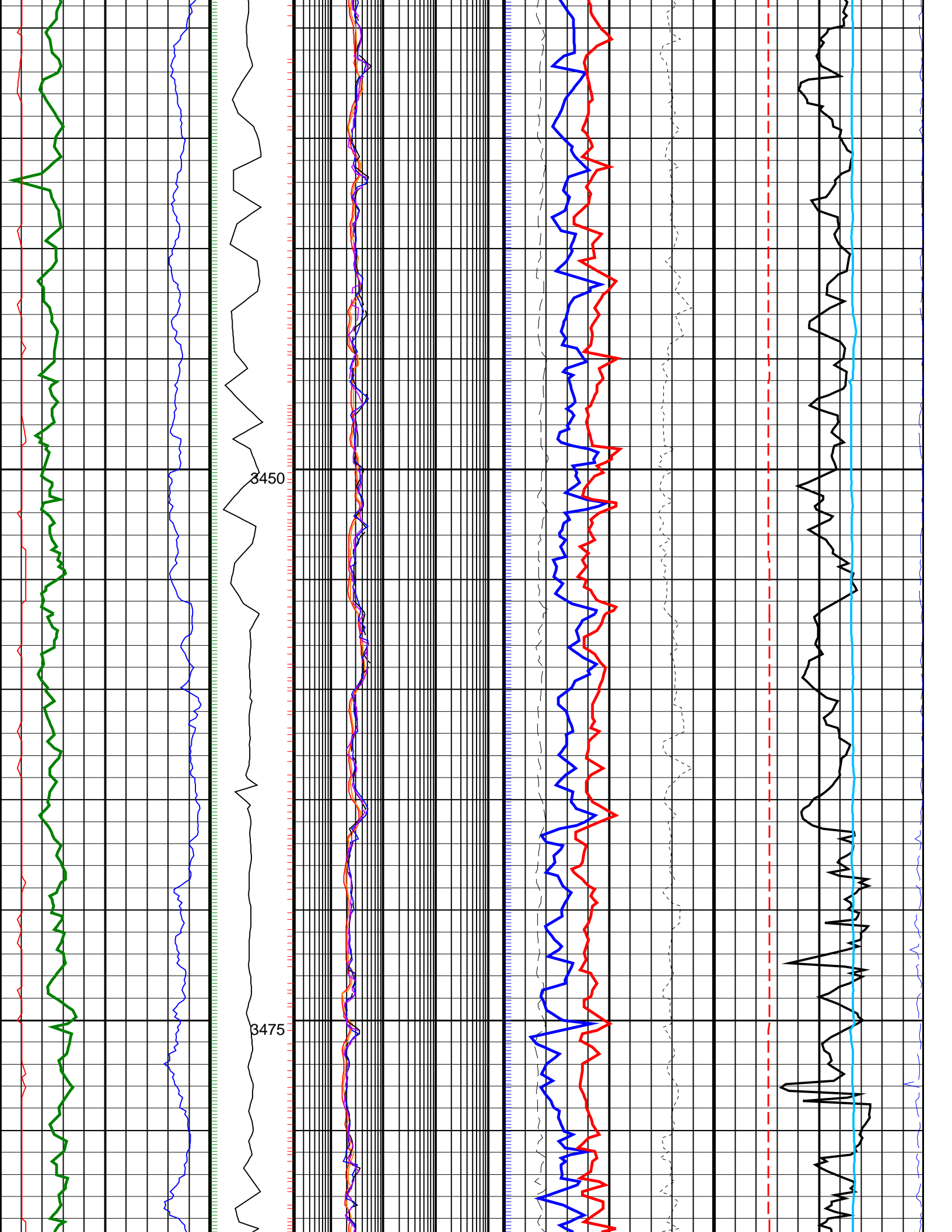
		Shallow Button Resistivity, Real-Time (RES_BS_RT) 0.2 (OHMM) 2000			
		Deep Button Resistivity, Real-Time (RES_BD_RT) 0.2 (OHMM) 2000			Equivalent Circulating Density, Real-Time (ECD_ECO_RT) 0 (G/C3) 2
Ultrasonic Caliper, Average Diameter, Real-Time, Recomputed at Surface (UCAV_ECO_RT) 8 (IN) 13		Ring Resistivity, Real-Time (RES_RING_RT) 0.2 (OHMM) 2000	Photoelectric Factor, Bottom, Real-Time, Computed Downhole (PEB_DH_ECO_RT) 0 (----) 10	Bulk Density Correction, Bottom, Real-Time Computed Downhole (DRHB_DH_ECO_RT) -0.25 (G/C3) 0.25	Delta-T Compressional, Real-Time (DTCO_RT) 40 (US/F) 140
Gamma Ray, Average, Real-Time (GRMA_ECO_RT) 0 (GAPI) 200		ARC Phase Shift Resistivity 40 inch at 2 MHz, Real-Time (P40H_ECO_RT) 0.2 (OHMM) 2000	Bulk Density, Bottom, Real-Time, Computed Downhole (ROBB_DH_ECO_RT) 1.95 (G/C3) 2.95		Coherence at Compressional Peak, Real-Time (CHCO_RT) -9 (----) 1
ROP*5 (ROP5) 200 (M/HR) 0	MWD Collar RPM (CRPM_RT) (RPM) 0 400	ARC Phase Shift Resistivity 16 inch at 2 MHz, Real-Time (P16H_ECO_RT) 0.2 (OHMM) 2000	Best Thermal Neutron Porosity, Average, Real-Time (BPHI_ECO_RT) 45 (PU) -15		Downhole Annulus Temperature, Real Time, Computed Downhole (DHAT_DH_ECO_RT) 0 (DEGC) 200

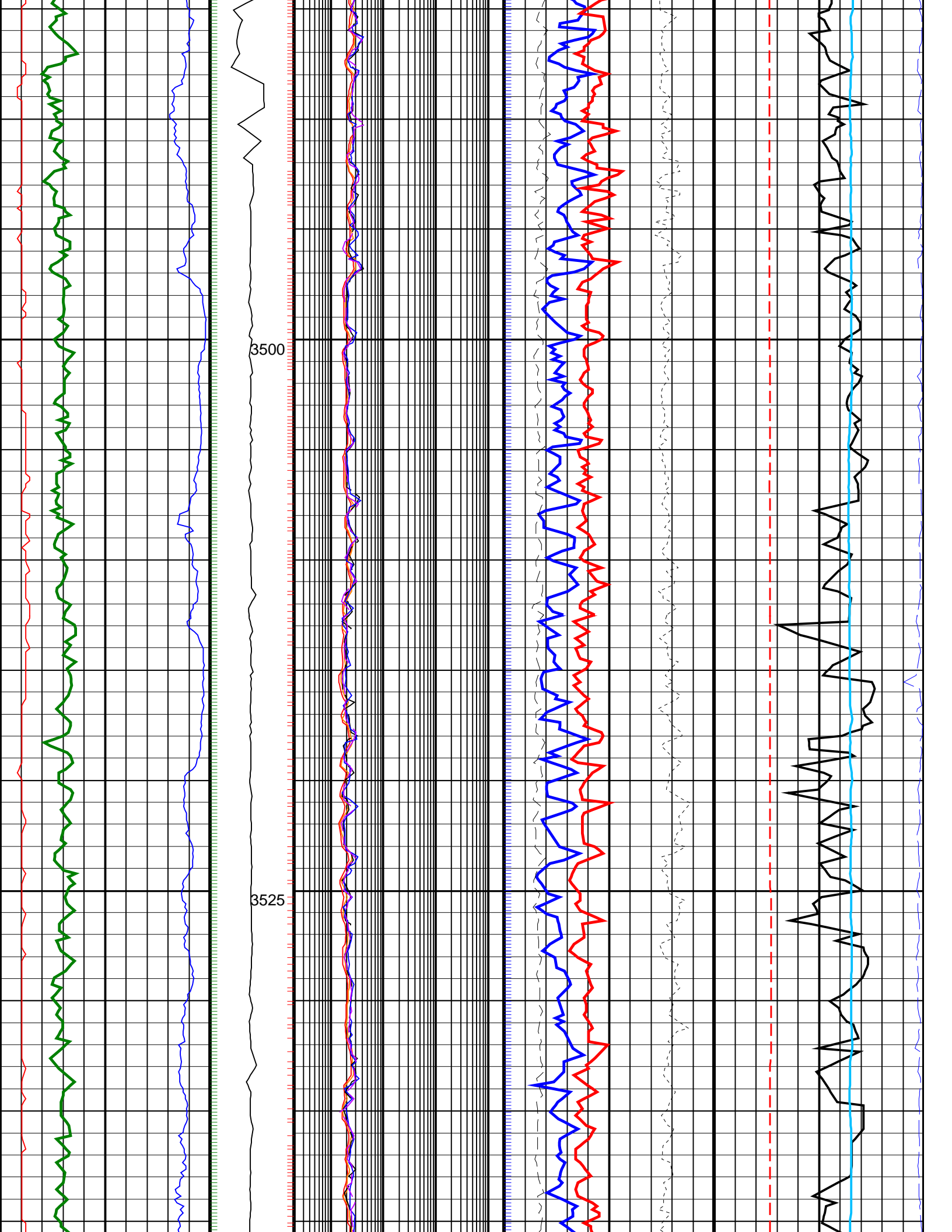


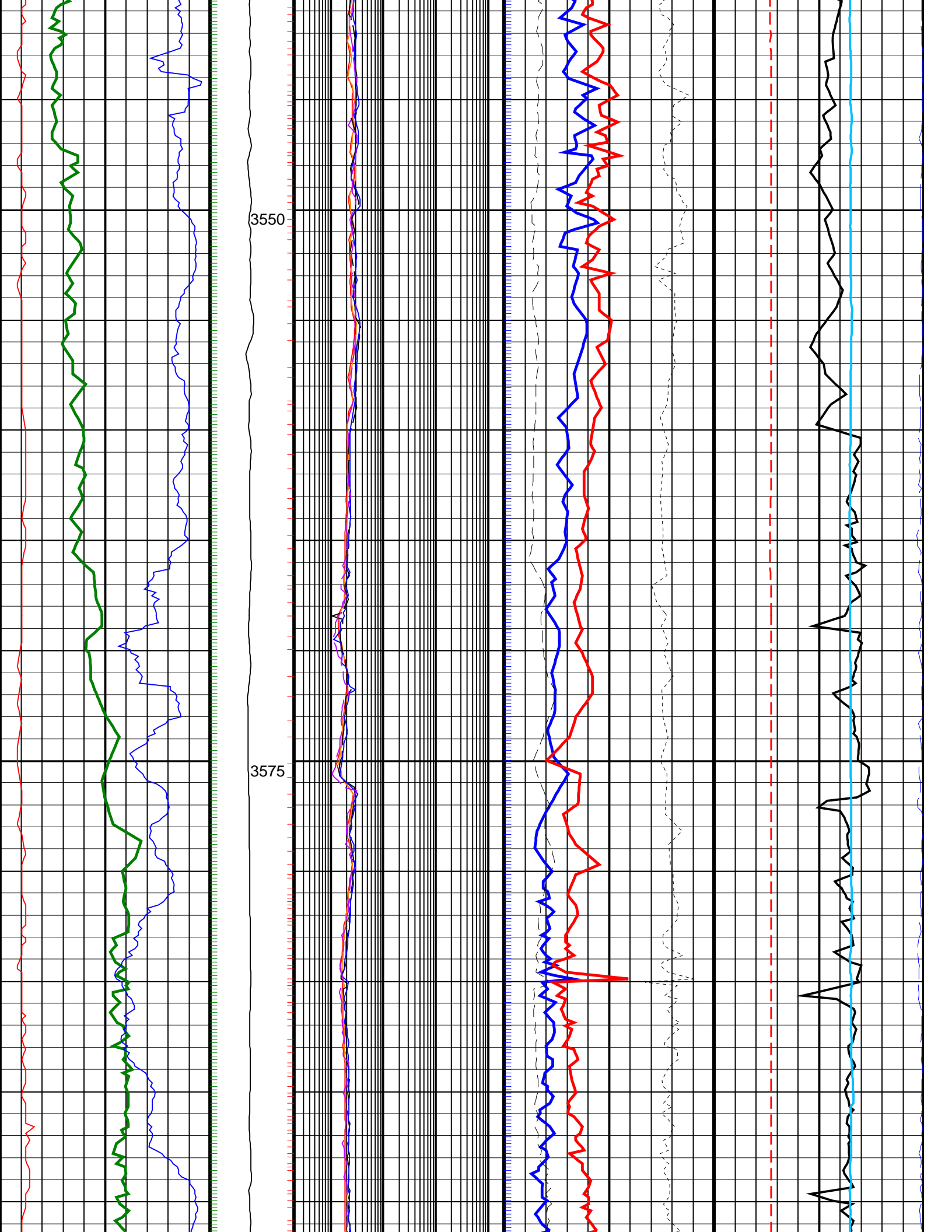


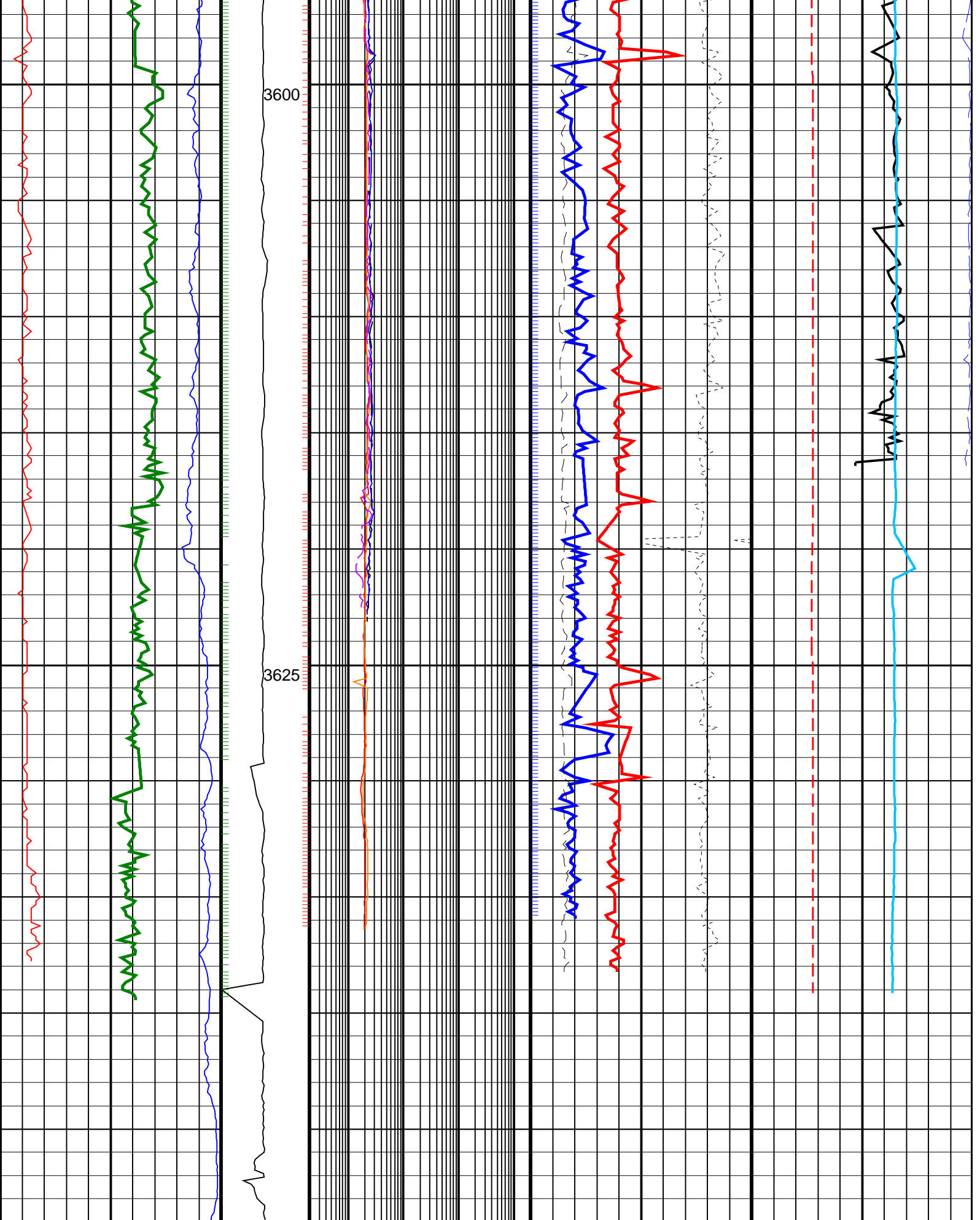












<p>ROP*5 (ROP5) (M/HR)</p> <p>200</p>	<p>MWD Collar RPM (CRPM_RT) (RPM)</p> <p>0</p>	<p>ARC Phase Shift Resistivity 16 inch at 2 MHz, Real-Time (P16H_ECO_RT)</p> <p>0.0 (OHMM) 0000</p>	<p>Best Thermal Neutron Porosity, Average, Real-Time (BPHI_ECO_RT)</p> <p>45 (PV)</p>	<p>Downhole Annulus Temperature, Real Time, Computed Downhole (DHAT_ DH_ECO_RT)</p> <p>145 (F)</p>
---	--	---	---	--

	0	400	0.2	(OHMM)	2000	45	(PU)	-15	0	(DEGC)	200				
Gamma Ray, Average, Real-Time (GRMA_ECO_RT)	0	(GAPI)	200	ARC Phase Shift Resistivity 40 inch at 2 MHz, Real-Time (P40H_ECO_RT)			Bulk Density, Bottom, Real-Time, Computed Downhole (ROBB_DH_ECO_RT)		Coherence at Compressional Peak, Real-Time (CHCO_RT)						
	0.2	(OHMM)	2000	1.95			(G/C3)		2.95		-9	(----	1		
Ultrasonic Caliper, Average Diameter, Real-Time, Recomputed at Surface (UCAV_ECO_RT)	8	(IN)	13	Ring Resistivity, Real-Time (RES_RING_RT)			Photoelectric Factor, Bottom, Real-Time, Computed Downhole (PEB_DH_ECO_RT)	Bulk Density Correction, Bottom, Real-Time Computed Downhole (DRHB_DH_ECO_RT)		Delta-T Compressional, Real-Time (DTCO_RT)					
	0.2	(OHMM)	2000	0			(----	10		-0.25		0.25	40	(US/F)	140
	Deep Button Resistivity, Real-Time (RES_BD_RT)			0.2			(OHMM)		2000		Equivalent Circulating Density, Real-Time (ECD_ECO_RT)		0	(G/C3)	2
	Shallow Button Resistivity, Real-Time (RES_BS_RT)			0.2			(OHMM)		2000						

PIP SUMMARY

- └ Gamma Ray Samples
- └ Neutron Samples
- └ Resistivity Samples

IDEAL Version: ID13_0C_08

IDF

ECO6	id13_0c_02	MWD_10	id13_0c_02
RAB	id13_0c_02	SON675	id13_0c_02