

Elver-1 EcoScope Service RT 500MD

Format: ECO-SON-GVR_500MD_RT

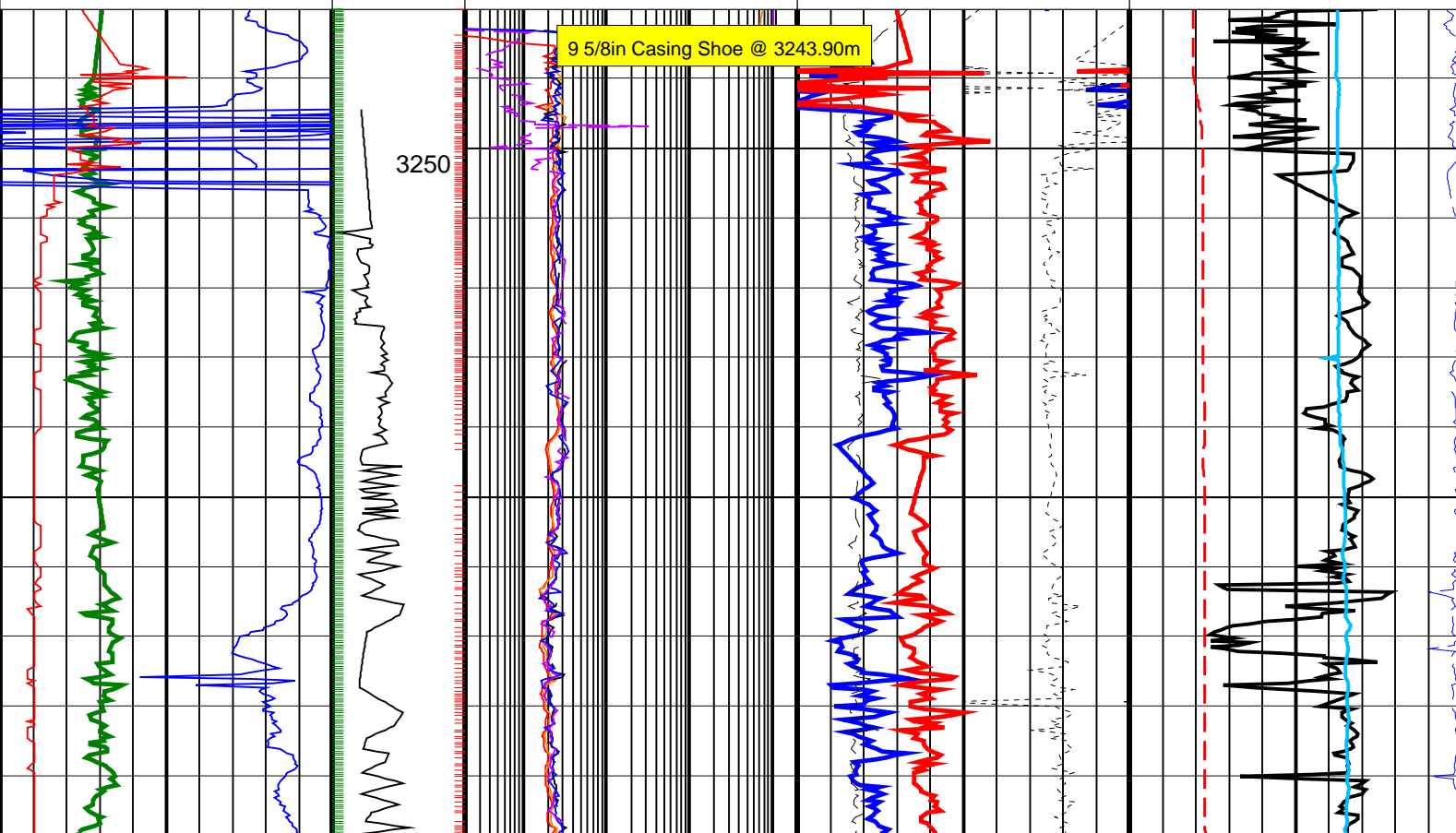
Vertical Scale: 1:500

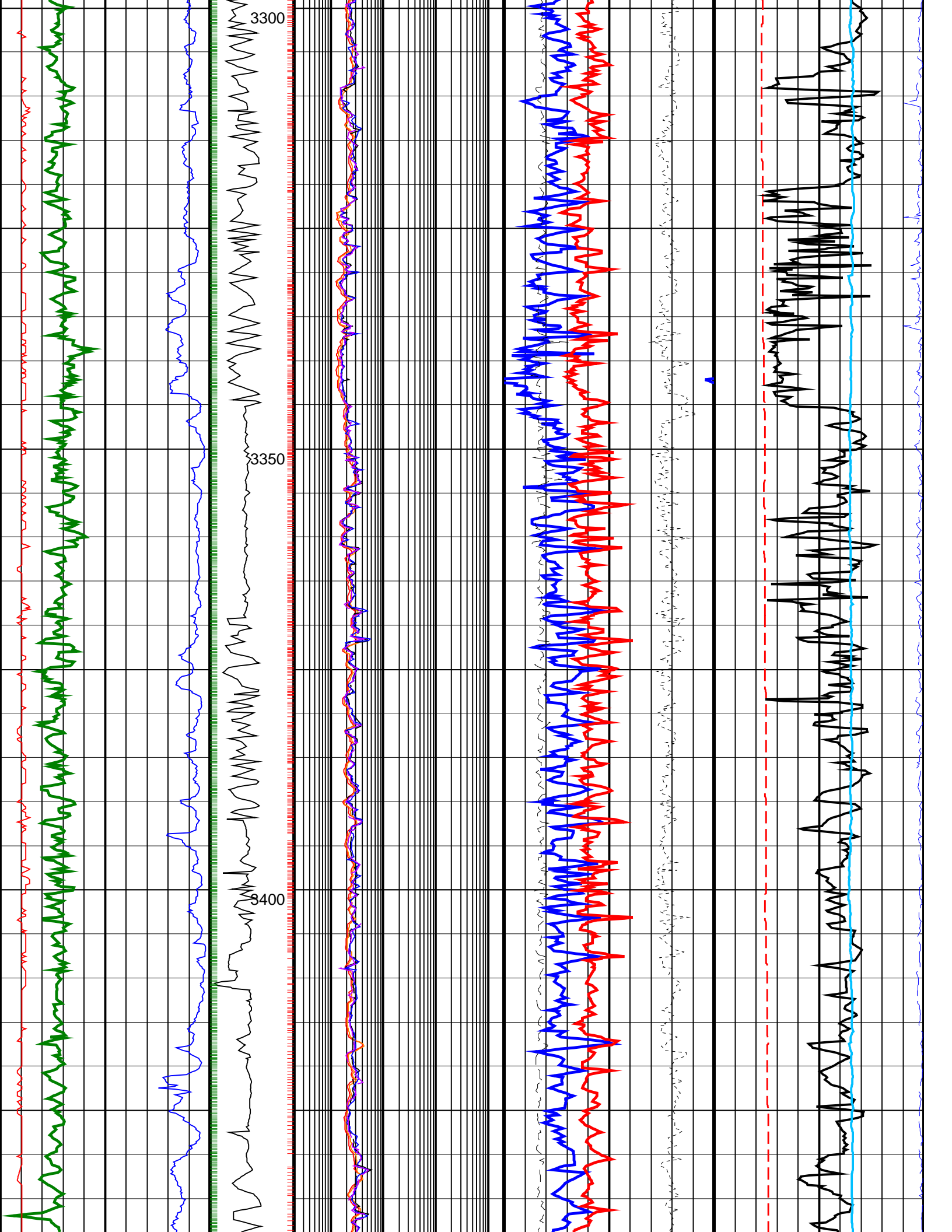
Graphics File Created: 08-Jan-2009 08:57

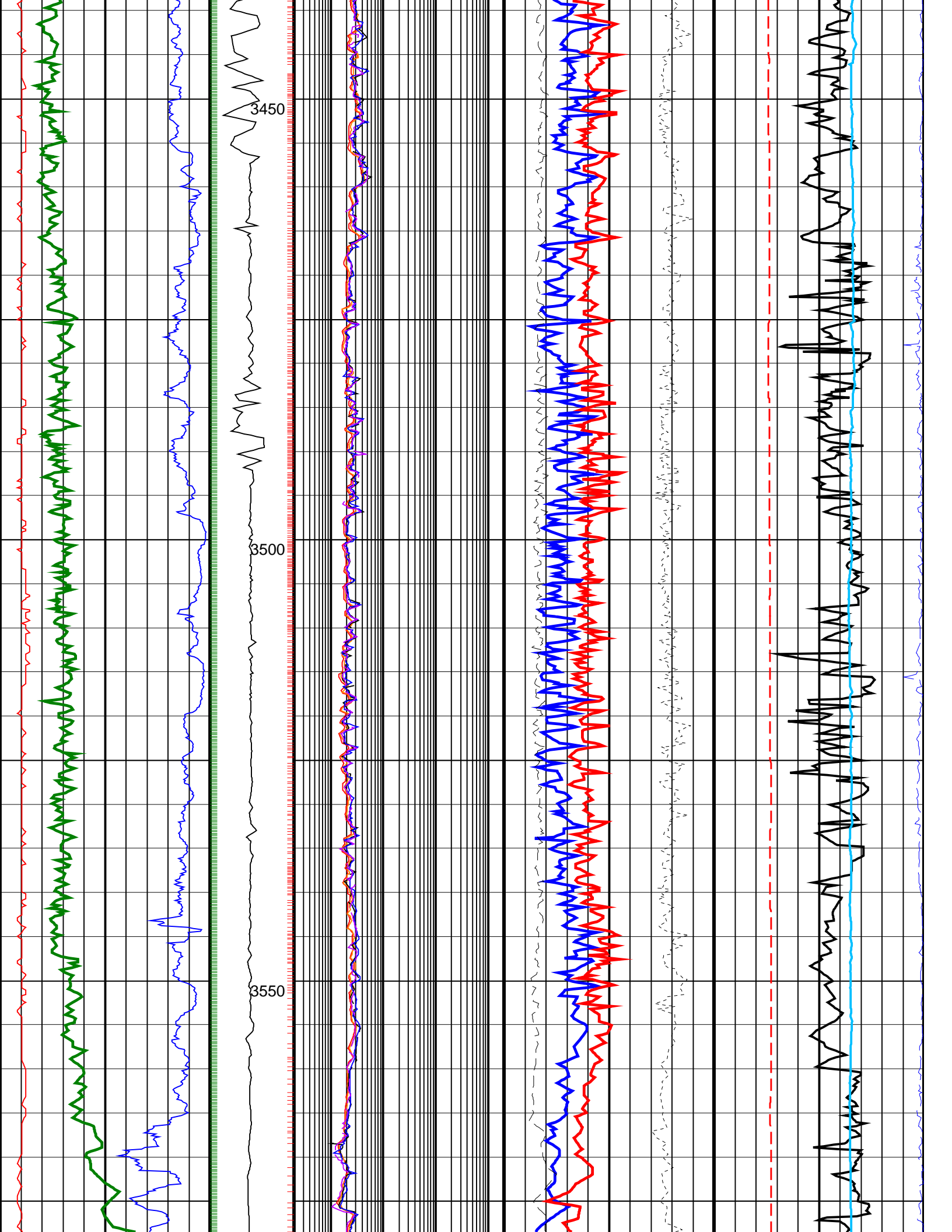
PIP SUMMARY

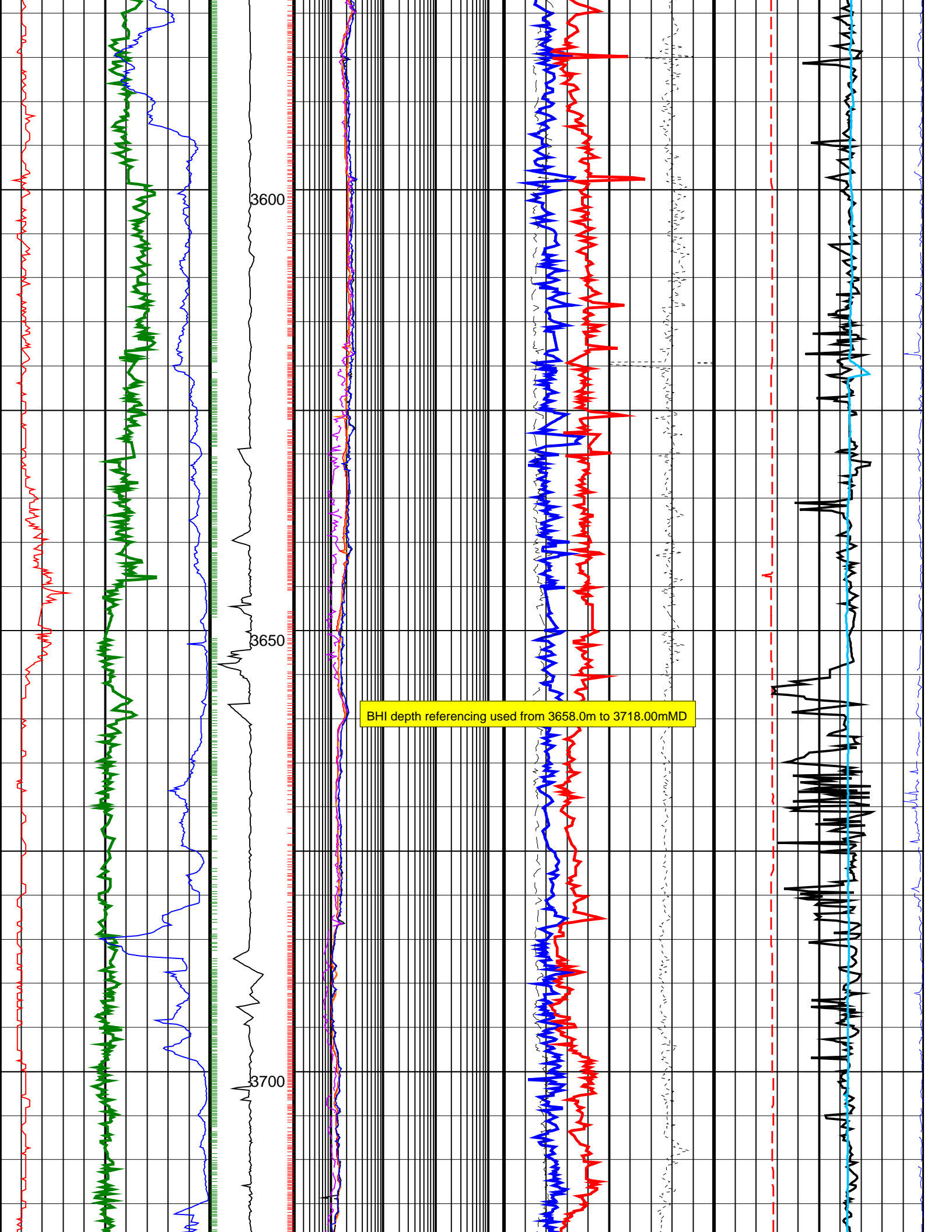
- └ Gamma Ray Samples
- └ Resistivity Samples

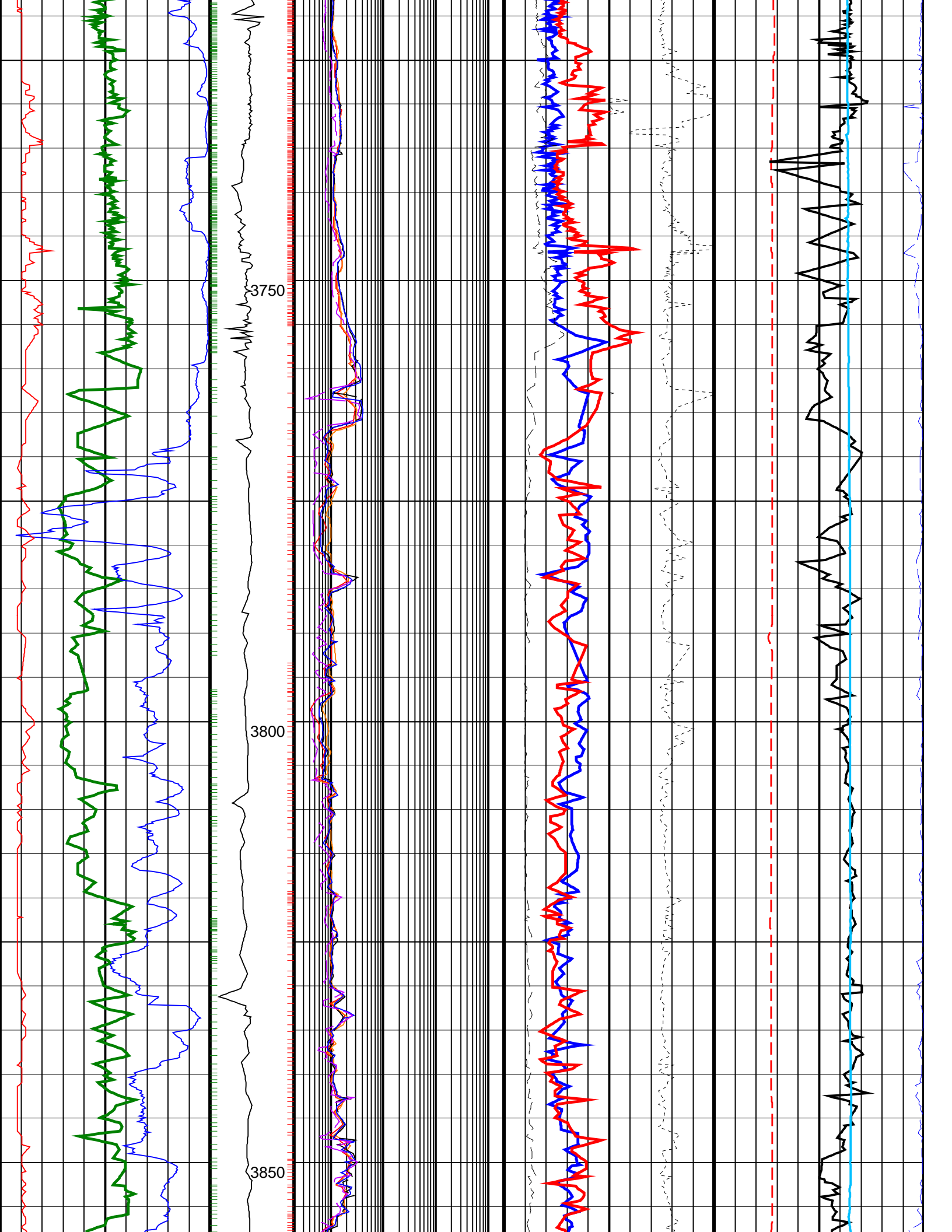
		<div>Shallow Button Resistivity, Real-Time (RES_BS_RT)</div> <div>0.2 (OHMM) 2000</div>			
		<div>Deep Button Resistivity, Real-Time (RES_BD_RT)</div> <div>0.2 (OHMM) 2000</div>			<div>Equivalent Circulating Density, Real-Time (ECD_ ECO_RT)</div> <div>0 (G/C3) 2</div>
<div>Ultrasonic Caliper, Average Diameter, Real-Time, Recomputed at Surface (UCAV_ECO_RT)</div> <div>8 (IN) 13</div>		<div>Ring Resistivity, Real-Time (RES_RING_RT)</div> <div>0.2 (OHMM) 2000</div>	<div>Photoelectric Factor, Bottom, Real-Time, Computed Downhole (PEB_DH_ ECO_RT)</div> <div>0 (----) 10</div>	<div>Bulk Density Correction, Bottom, Real-Time Computed Downhole (DRHB_DH_ ECO_RT)</div> <div>(G/C3) -0.25 0.25</div>	<div>Delta-T Compressional, Real-Time (DTCO_RT)</div> <div>40 (US/F) 140</div>
<div>Gamma Ray, Average, Real-Time (GRMA_ECO_RT)</div> <div>0 (GAPI) 200</div>		<div>ARC Phase Shift Resistivity 40 inch at 2 MHz, Real-Time (P40H_ECO_RT)</div> <div>0.2 (OHMM) 2000</div>	<div>Bulk Density, Bottom, Real-Time, Computed Downhole (ROBB_DH_ECO_ RT)</div> <div>1.95 (G/C3) 2.95</div>	<div>Coherence at Compressional Peak, Real-Time (CHCO_RT)</div> <div>-9 (----) 1</div>	
<div>ROP*5 (ROP5)</div> <div>200 (M/HR) 0</div>	<div>MWD Collar RPM (CRPM_RT) (RPM)</div> <div>0 400</div>	<div>ARC Phase Shift Resistivity 16 inch at 2 MHz, Real-Time (P16H_ECO_RT)</div> <div>0.2 (OHMM) 2000</div>	<div>Best Thermal Neutron Porosity, Average, Real-Time (BPHI_ECO_RT)</div> <div>45 (PU) -15</div>	<div>Downhole Annulus Temperature, Real Time, Computed Downhole (DHAT_ DH_ECO_RT)</div> <div>(DEGC) 0 200</div>	

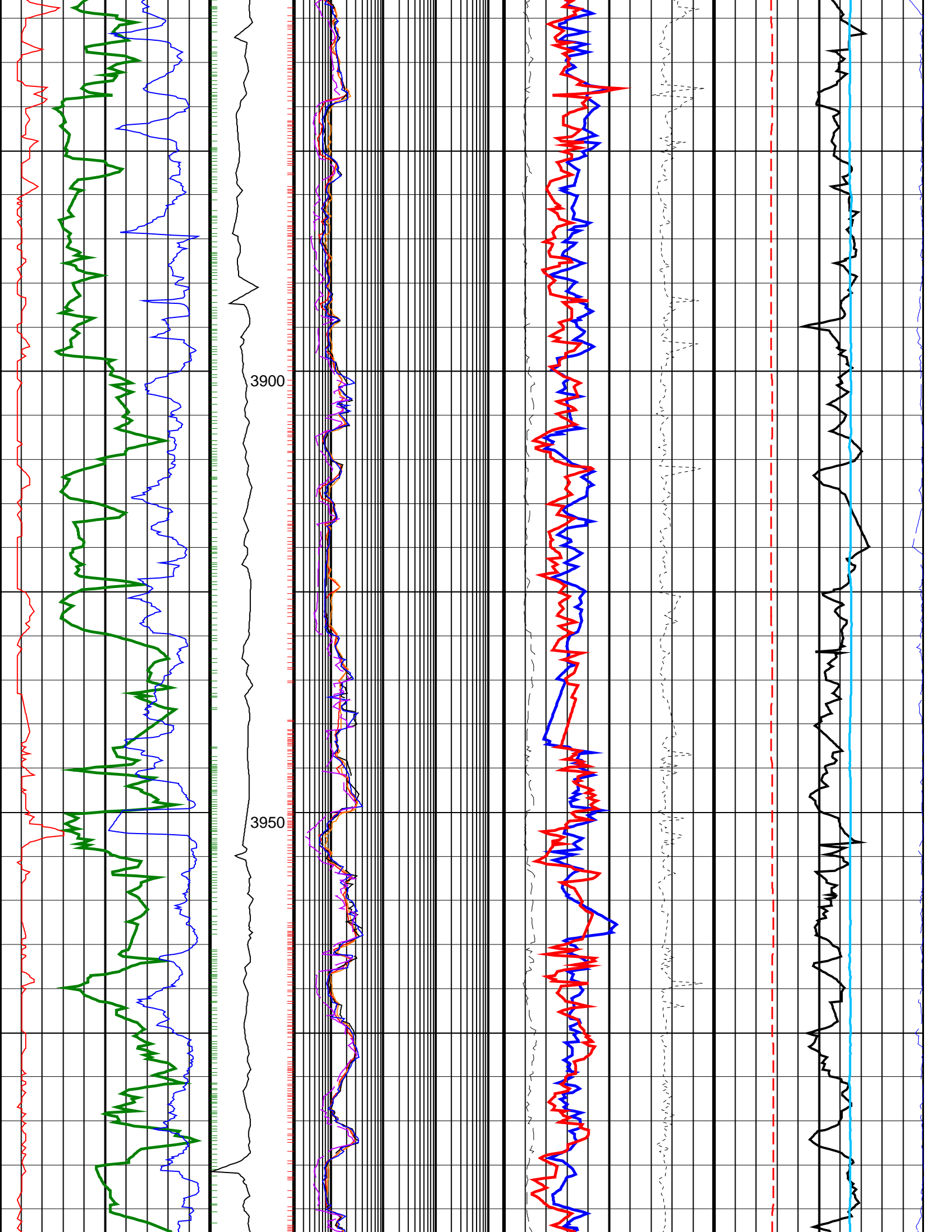


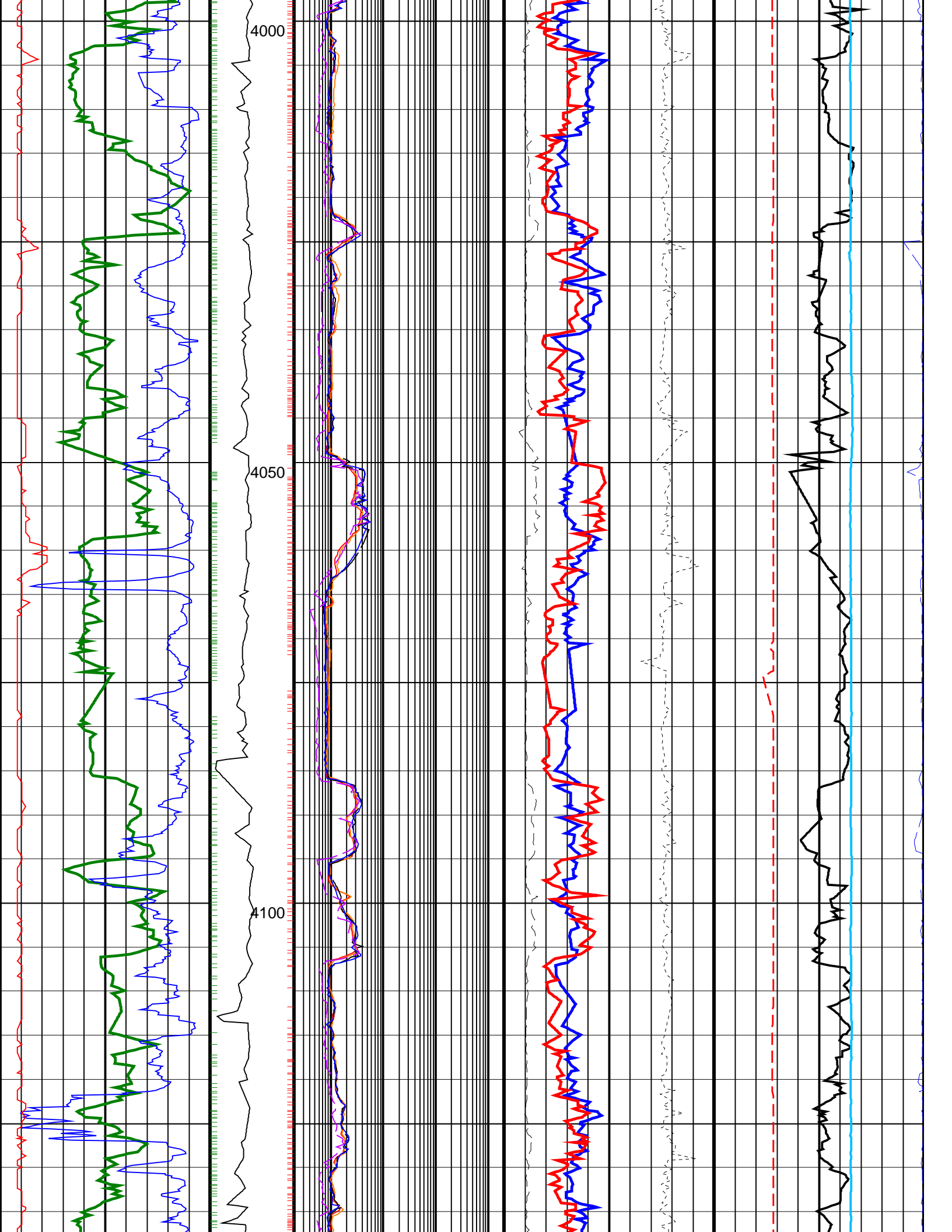


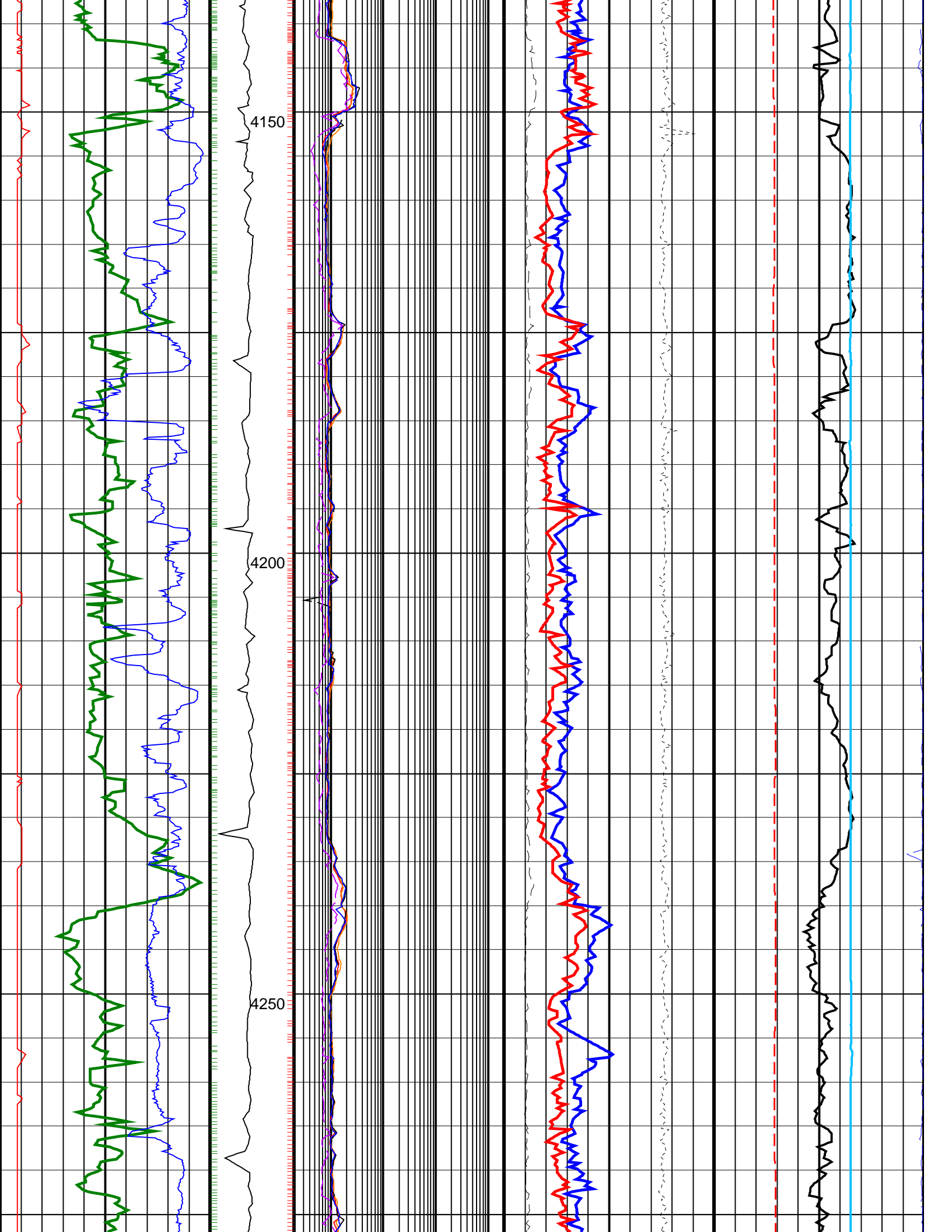


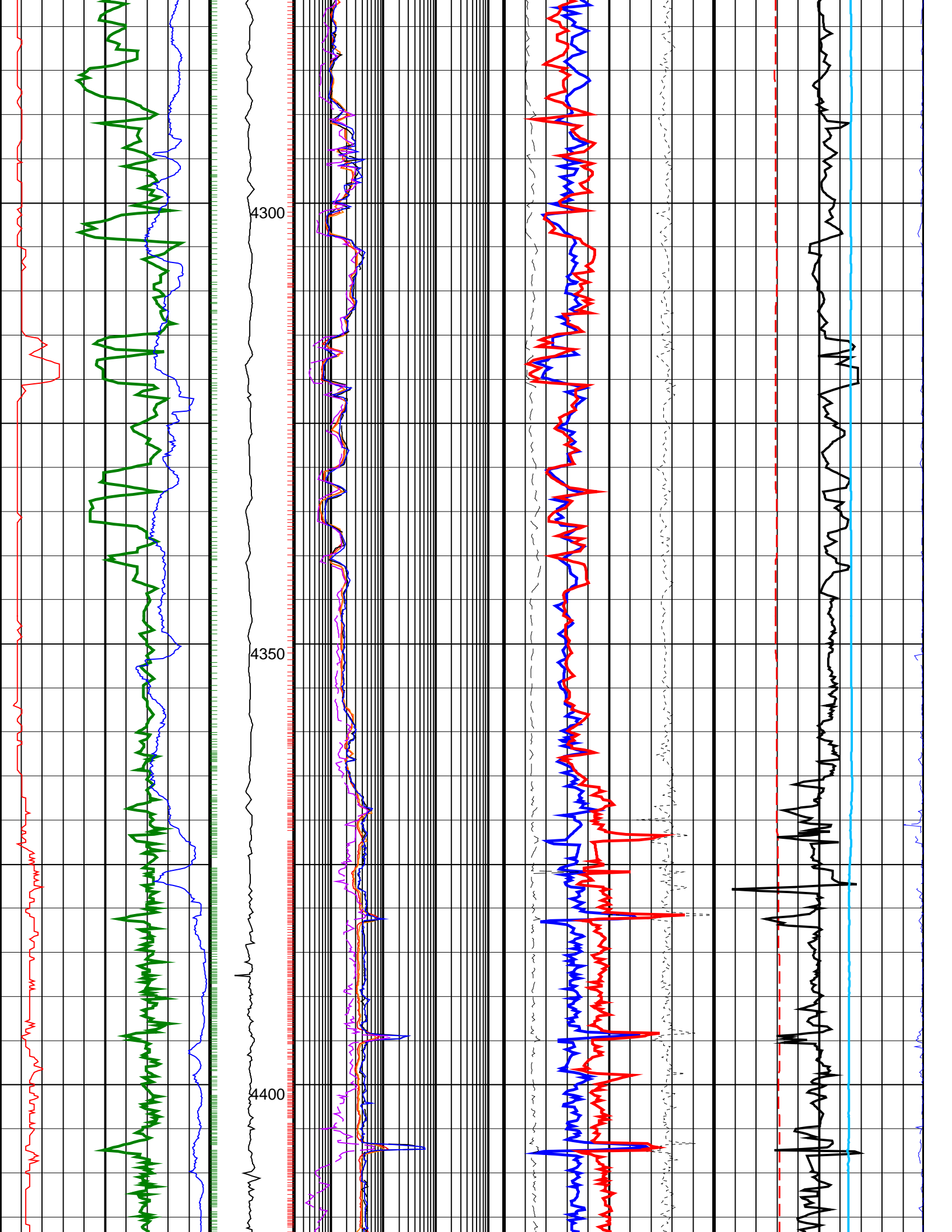


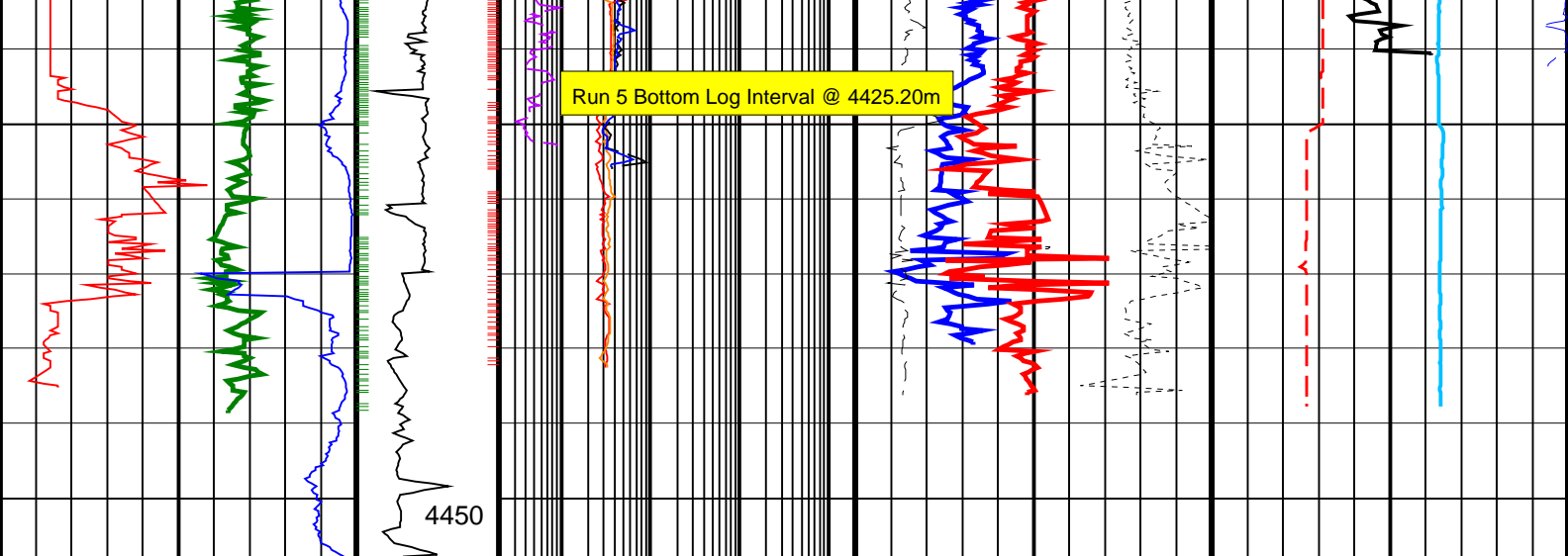












<div>ROP*5 (ROP5)</div> <div>200 (M/HR)</div> <div>0</div>	<div>MWD Collar RPM (CRPM_RT) (RPM)</div> <div>0 400</div>	<div>ARC Phase Shift Resistivity 16 inch at 2 MHz, Real-Time (P16H_ECO_RT)</div> <div>0.2 (OHMM) 2000</div>		<div>Best Thermal Neutron Porosity, Average, Real-Time (BPHI_ECO_RT)</div> <div>45 (PU) -15</div>		<div>Downhole Annulus Temperature, Real Time, Computed Downhole (DHAT_DH_ECO_RT) (DEGC)</div> <div>0 - - - - 200</div>	
<div>Gamma Ray, Average, Real-Time (GRMA_ECO_RT)</div> <div>0 (GAPI) 200</div>		<div>ARC Phase Shift Resistivity 40 inch at 2 MHz, Real-Time (P40H_ECO_RT)</div> <div>0.2 (OHMM) 2000</div>		<div>Bulk Density, Bottom, Real-Time, Computed Downhole (ROBB_DH_ECO_RT) (G/C3)</div> <div>1.95 2.95</div>		<div>Coherence at Compressional Peak, Real-Time (CHCO_RT) (----)</div> <div>-9 1</div>	
<div>Ultrasonic Caliper, Average Diameter, Real-Time, Recomputed at Surface (UCAV_ECO_RT)</div> <div>8 (IN) 13</div>		<div>Ring Resistivity, Real-Time (RES_RING_RT) (OHMM)</div> <div>0.2 2000</div>		<div>Photoelectric Factor, Bottom, Real-Time, Computed Downhole (PEB_DH_ECO_RT) (----)</div> <div>0 10</div>	<div>Bulk Density Correction, Bottom, Real-Time Computed Downhole (DRHB_DH_ECO_RT) (G/C3)</div> <div>-0.25 0.25</div>	<div>Delta-T Compressional, Real-Time (DTCO_RT) (US/F)</div> <div>40 140</div>	
		<div>Deep Button Resistivity, Real-Time (RES_BD_RT) (OHMM)</div> <div>0.2 2000</div>				<div>Equivalent Circulating Density, Real-Time (ECD_ECO_RT) (G/C3)</div> <div>0 2</div>	
		<div>Shallow Button Resistivity, Real-Time (RES_BS_RT) (OHMM)</div> <div>0.2 2000</div>					

PIP SUMMARY

- Gamma Ray Samples
- Resistivity Samples

IDEAL Version: ID13_0C_08
IDF